



VACMASTER® 23T ELECTRIC ABRASIVE VACUUMS



BUILT MARCO TOUGH
MARCO MANUFACTURED

PART NUMBERS AND SCHEMATICS GUIDE

Company Profile

Since 1944, Marco has developed a strong tradition of providing innovative and reliable products and services to the surface preparation and protective coatings industries. We are the world's premier provider of Abrasives, Blasting, Coating, Dust Collectors, Engineered Systems, Rental, Safety, Service, Repair, & Modernization, and Vacuums.

Through innovative designs and a total commitment to quality, Marco manufactures products that increase production rates, create a safer workplace, and reduce maintenance costs. Marco's industry experience, manufacturing capabilities, legendary customer service, product availability, logistics services, and technology leadership is your assurance that we deliver high quality products and services, providing the best value to you, our customer.

The Marco Difference

- **Industry Experience** – With Marco on your team, you have access to expertise which can only come from decades of industry leadership. We have organized our engineering department, production specialists, customer operations, and safety support into a "Center of Competence." As a Marco customer, you have access to hundreds of years of cumulative experience related to your operations.
- **Manufacturing Excellence** – Marco is a manufacturer of equipment for the Surface Preparation and Protective Coatings industries. Marco's engineers benchmark the industry to ensure that we design and manufacture superior products that set the "Gold Standard" for performance, safety, and quality.
- **Legendary Customer Service** – Marco's legendary customer service team is staffed by friendly, highly-trained individuals who are focused on providing the highest level of product support, order accuracy, and customer satisfaction.
- **Product Availability** – We stock over 10,000 SKU's and have more than 45 shipping locations to serve North American and International markets for all major brands of blasting and coating equipment. As the largest provider of surface preparation and protective coatings equipment in the world, our inventory levels and product availability are unmatched.
- **Logistics Services** – Marco's in-house logistics team is dedicated to moving your shipment anywhere in the world. We move more than 14,000 truckloads every year, allowing you to save on freight costs by leveraging our buying power. Lower your process costs with a single invoice, which includes product and freight.
- **Technology Leadership** – Our website provides: Operator's Manuals, Part Numbers and Schematics Guides, SDS information, and Features & Specifications Guides, providing access to information 24/7. Our Extranet application allows you to receive quotes and place orders online. Our Intranet maintains a complete record of your purchase history to assist with ongoing support of your existing equipment and future purchasing decisions.

Vision Statement

Marco is the world's premier provider of Abrasives, Blasting, Coating, Dust Collectors, Engineered Systems, Rental, Safety, Service, Repair, & Modernization, and Vacuums.

Mission Statement

Marco provides strong leadership and innovation to the surface preparation and protective coatings industries. We dedicate our efforts to the continuous improvement of our products, services, processes, people, and most importantly, the quality of our customer's experience.

Quality Statement

Marco is committed to providing superior quality in the design, manufacturing, distribution, rental, service, and repair of our products. Continuous improvement of our processes and supply chain Integration comprise the core of our business strategy for delivering exceptional quality and value in all Marco products and services.

Management Philosophy

We are a company dedicated to the success of every customer and associate. We discuss, debate, challenge, measure, and test our ideas. We will be boundless and limitless in our passion to improve. Through sound leadership and dedicated associates, we will ensure a long term, profitable future for Marco, our associates, customers, and suppliers.

TABLE OF CONTENTS

Company Profile	1
Part Numbers	3
Specifications	4
Assembly Part Numbers and Schematics	5
Front Assembly	5
Top Assembly	7
Rear Assembly	9
Left Side Assembly	11
Right Side Assembly	13
Pneumatic Piston Vibrators	15
Filter Bag Pulsers	16
Pulser System Assembly	17
Wear Plates and Baffles	19
Emergency-Stop Station	21
Hazard Identification Decals	22
Optional Accessories	26

PART NUMBERS

Part Numbers	VACMASTER® 23T ELECTRIC ABRASIVE VACUUMS		
	200 Horsepower Electric Motor	Acrylic-Coated Filter Bags	Filter Cartridge Quantity
10106413	X	X	37



SPECIFICATIONS

Performance:	MAX 3658 CFM
Filter Cartridge Style:	Acrylic-Coated Filter Bags 37 Required
Filter Cleaning:	Pulse System, 25–30 second intervals. Pulse Duration: 200–350 millisecond
Vacuum	27" Hg
Ducting Connections:	6" I.D. Inlet with 4" adapter
Inspection Ports:	One 10" Viewable to Filters with access ports to hopper
Material Removal:	Automatic Direct Dump
Blower:	Rotary lobe, positive displacement with jet inlet
Motor:	200 Horsepower Electric 3-Phase
Electrical System:	460 V, 60 Hz 219 FLA
Air Requirements:	Clean, Dry, Compressed Air 24 CFM @ 90 PSI
Motor Protection:	Motors are fused in control box.
Fluid Specifications:	Grease/Lubricator: Mobil Polyrex EM or equivalent Vibrator Lubricator: 4 oz. pneumatic air tool oil Blower Oil: ROOTS™ synthetic lubricating oil
Unit Dimensions:	Weight: 12,000 pounds (empty) Length: 12' Width: 8' 6" Height: 10' 5" Raised Height: 15' 8" Dump Clearance: 7' 9"

ASSEMBLY PART NUMBERS AND SCHEMATICS

Front Assembly

Item #	Part #	Description
Fig. 1		
1	10106397	12" Bird Screen Elbow
2	10100701	3/4-10 x 2-1/2" Hex Bolt (16 Required)
3	10100704	3/4" Flat Washer (32 Required)
4	10100596	3/4" Lock Washer (16 Required)
5	10100595	3/4-10 Hex Nut (16 Required)
6	10106407	12" Raincap
7	10106283	7/8-9 x 2-1/2" Grade 5 Zinc Bolt (24 Required)
8	10104716	7/8" Flat Washer - Zinc (48 Required)
9	10104717	7/8" Lock Washer - Zinc (24 Required)
10	10104822	7/8-8 Gr 5 Zinc Nut (24 Required)
11	10106406	12" Exhaust Silencer End
12	10106411	Discharge Silencer
13	10106410	Jet Port Silencer
14	10106508	Intake Filter Housing Cap
15	10104727	Air Filter Housing Gasket
16	10106279	Intake Filter Housing
17	20PFBA31095614	1/4" Tube x 1/4" NPT 90° (Two Required)
18	10106350	Electric Vacuum Skid Frame
19	10104715	7/8-9 x 2" Grade 5 Zinc Bolt (32 Required)
20	10104717	7/8" Lock Washer (32 Required)
21	10104716	7/8" Flat Washer (32 Required)
22	10106400	Belt Guard
23	10106399	Belt Guard
24	10103400	3/8-16 x 3/4" Bolt (Eight Required)
25	10106283	7/8-9 x 2-1/2" Grade 5 Bolt (Four Required)
26	10104716	7/8" Zinc Flat Washer (Four Required)
27	20PFHA24SA0404	1/4" Hex Nipple

Item #	Part #	Description
28	10106389	10" Discharge Elbow
29	10104777	721 Blower Top Shaft Left Discharge
30	10106388	8" Inlet Elbow Weldment
31	10101941	1/2-10 Hex Nut
32	10100674	1/2" Flat Washer
33	10102005	Rubber Washer 1-1/4" OD x 3/8" ID x 1/8"
34	10102253	Filter Cartridge 12.75" x 8.38" x 36" - Flange - .54" BH
35	10104234	3/8-16 x 1-1/4" Hex Bolt Zinc (Six Required)
36	10101936	3/8" Lock Washer - Zinc (Six Required)
37	10101938	3/8-16 Hex Nut - Galvanized (Six Required)
38	10104677	Liquid Filled Vacuum Gauge, 1/4" Bottom
39	1011844	1/4" Galvanized Pipe Tee
—	10106896	Blower Oil 100 For below 0° F
—	10106897	Blower Oil 150 For 0 – 32° F
—	10105254	Blower Oil 220 For 32 – 90° F
—	10106898	Blower Oil 320 For above 90° F
—	106M158	Part Numbers & Schematics Guide – Vacmaster® 23T Electric Abrasive Vacuums
—	1091158	Operator's Manual – Vacmaster® 23T Electric Abrasive Vacuums

Figure 1: Front Assembly



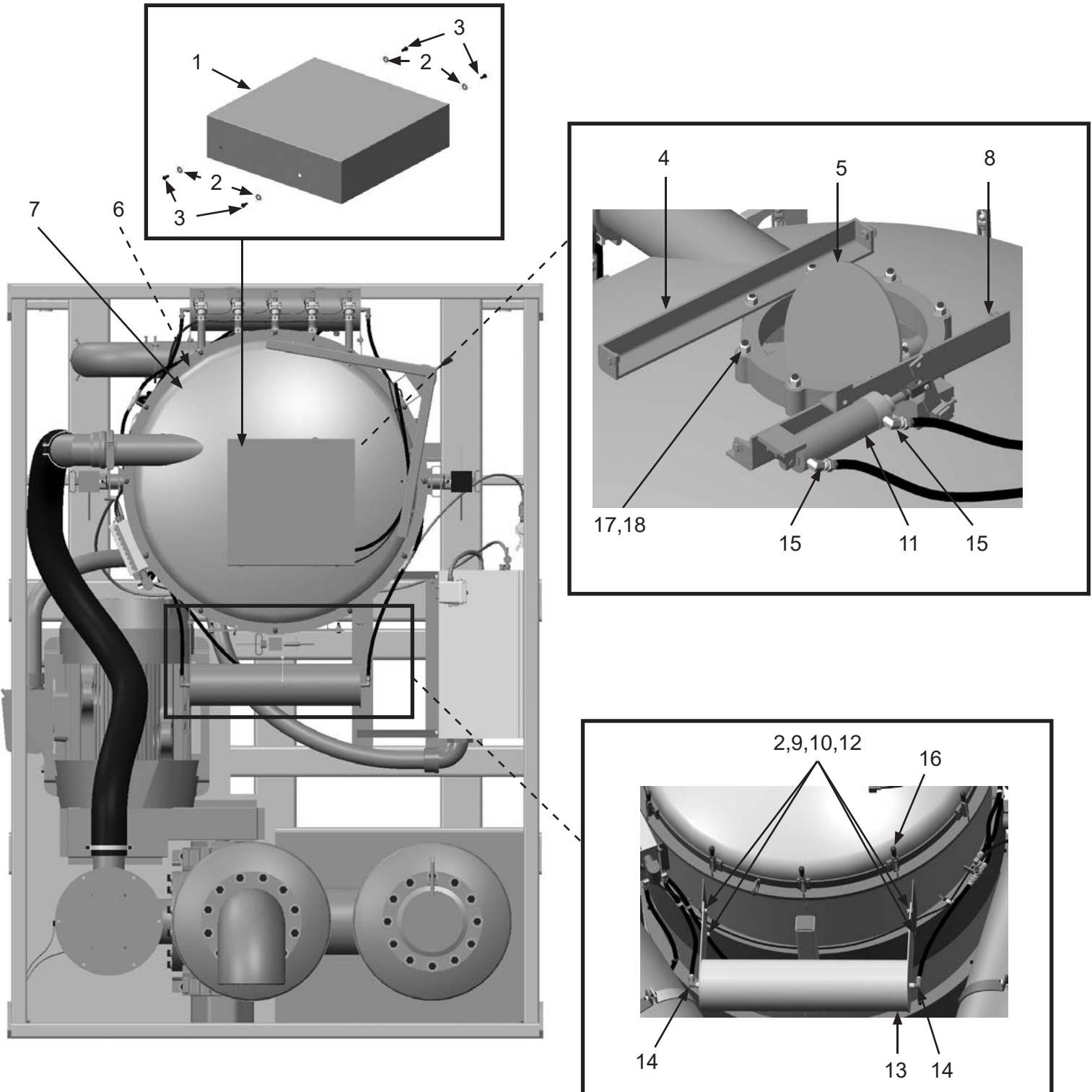
PART NUMBERS AND SCHEMATICS

Top Assembly

Item #	Part #	Description
Fig. 2		
1	10104559	Vacuum Butterfly Cover
2	10101942	3/8" Flat Washer - Galvanized (<i>13 Required</i>)
3	10103400	3/8-16 x 3/4" Bolt (<i>Four Required</i>)
4	10104554	Butterfly Cover Mount Weldment
5	10104537	Betts 12" Butterfly Valve
6	10104426	Vacuum Hopper Section Gasket
7	10104479	Vacuum Lid
8	10104538	Vacuum Butterfly Cylinder Weldment
9	1012318	3/8-16 Hex nut (<i>Four Required</i>)
10	10101936	3/8" Lock Washer - Zinc (<i>Four Required</i>)
11	10104667	2.5" Pneumatic Cylinder
12	1011747	3/8-16 x 1" Bolt (<i>Four Required</i>)
13	10106288	Auxiliary Header
14	20PFHA60UA0606	3/8" (M) x 3/8" (F) 90° Swivel (<i>Two Required</i>)
15	20PFHA60UA0406	1/4" (M) x 3/8" (F) 90° Swivel
16	10104486	Over Center Clamp (<i>12 Required</i>)
17	20100124	1/2-13 Hex Lock Nut (<i>Eight Required</i>)
18	10100674	1/2" Flat Washer (<i>Eight Required</i>)

PART NUMBERS AND SCHEMATICS

Figure 2: Top Assembly



PART NUMBERS AND SCHEMATICS

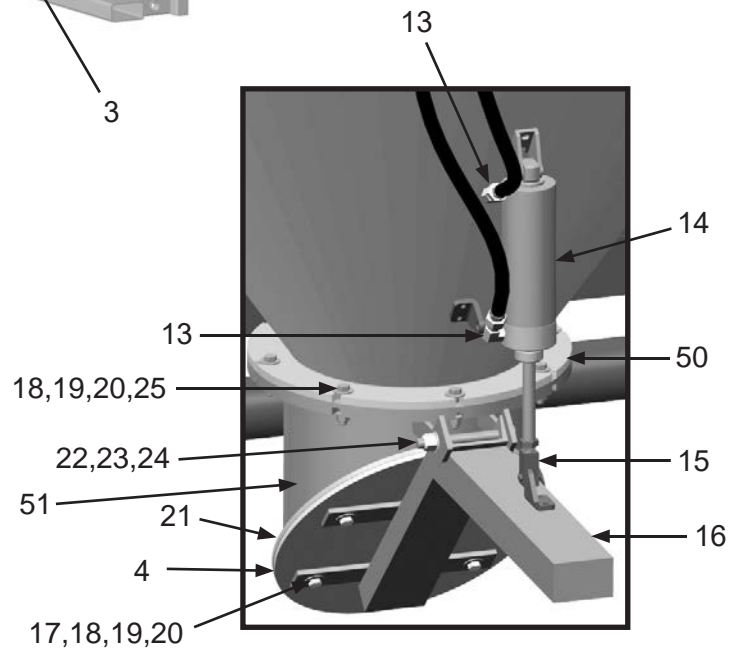
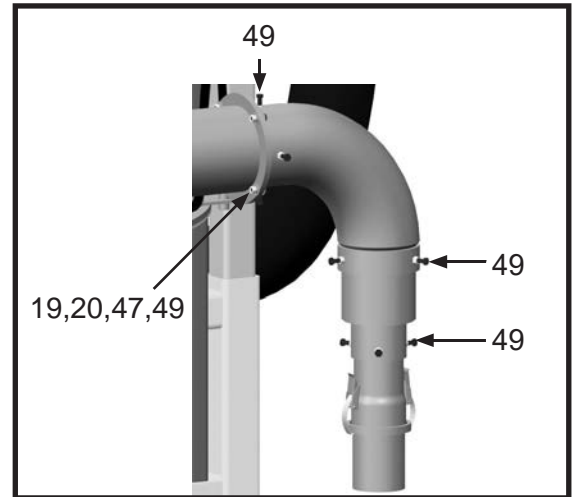
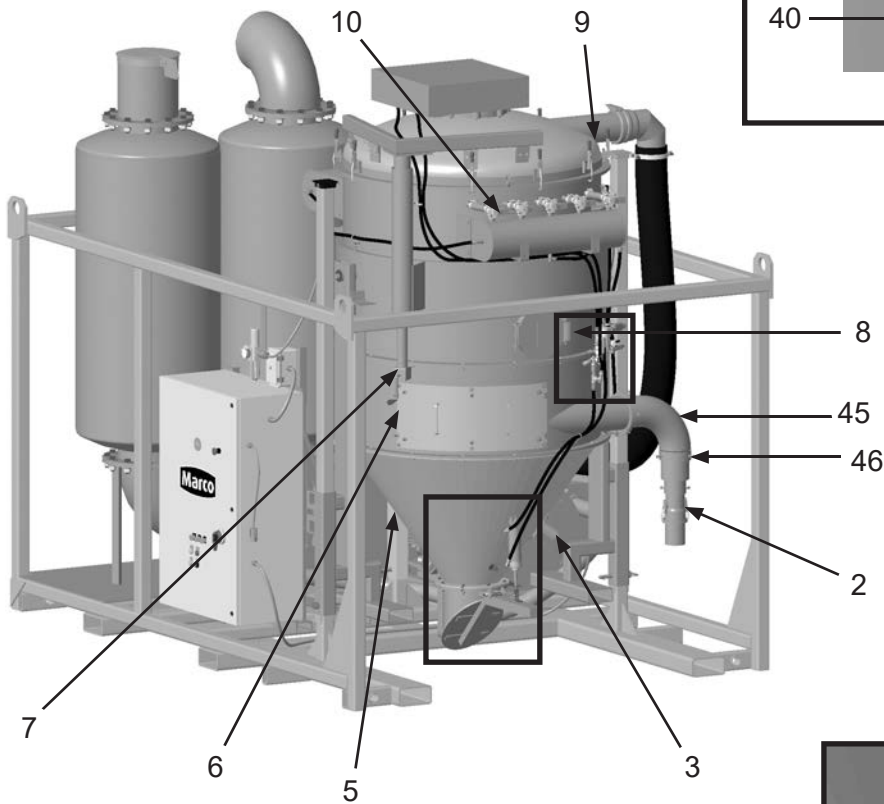
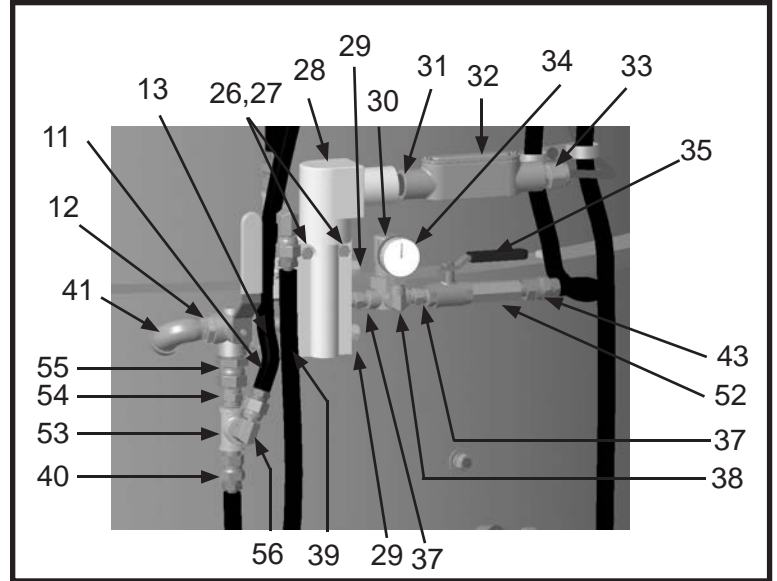
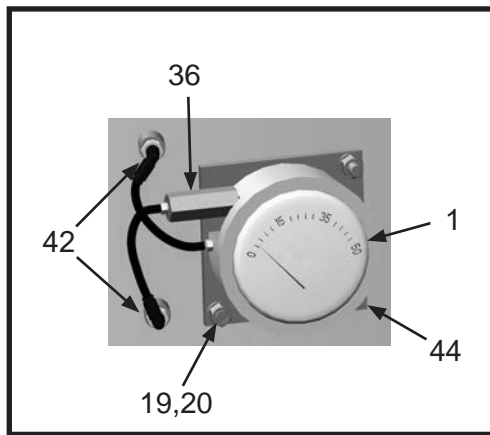
Rear Assembly

Item #	Part #	Description
Fig. 3		
1	10104673	0-50" Differential Pressure Gauge
2	10107797	4" Quick Disconnect Coupling
3	10104665	APV Series Piston Vibrator <i>(See Figure 6)</i>
4	10104506	Dump Door
5	10104411	Vacuum Hopper Cone
6	10106511	Vacuum Wear Door
	10105190	Wear Door Only
	10105189	Wear Door Liner Only
7	10104638	Trailer Jack
8	10104439	Hatch
9	10104486	Vacuum Lid Overcenter Clamp <i>(12 Required)</i>
10	10104498	Vacuum Header <i>(See Figure 8)</i>
11	1011818	1/2" x 1/4" Galvanized Bushing
12	20100571	1/2" NPT 3-Way Brass Ball Valve
13	20PFHA60UA0406	1/4" (M) x 3/8" (F) 90° Swivel <i>(Two Required)</i>
14	10104667	2.5" Pneumatic Cylinder
15	10104668	Piston Rod Clevis
16	10104507	Dump Arm
17	10104234	3/8-16 x 1-1/4 Hex Bolt Zinc <i>(Four Required)</i>
18	10101942	3/8" Flat Washer
19	10101936	3/8" Lock Washer - Zinc
20	1012318	3/8-16 Hex Nut <i>(Four Required)</i>
21	10104512	Dump Door Gasket
—	10104511	Dump Door Internal Plate
22	20100160	1/2-13 x 4-1/2" Hex Bolt
23	10100674	1/2" Flat Washer <i>(Two Required)</i>
24	20100124	1/2-13 Hex Lock Nut
25	1028617	3/8-16 x 1-3/4" Shoulder Bolt
26	1019044	1/4-20 x 1-3/4" Zinc Bolt <i>(Two Required)</i>

Item #	Part #	Description
27	1012323	1/4-20 Zinc Lock Nut with Nylon Insert <i>(Two Required)</i>
28	10104670	Solenoid
29	1019024	Breather Vent
30	10104676	Series MPR Mini Pressure Regulator
31	10L803035	1/2" Close Nipple
32	1019025	1/2" Straight Conduit Body
33	10104703	Cord Grip 1/2" Nylon .2-.47 Diameter
34	10104678	Pressure Gauge 100 Psi 1/8"
35	1080050	1/4" Ball Valve
36	10108373	1/8" NPT Inline Air Filter
37	20PFHA24SA0404	1/4" Hex Nipple <i>(Two Required)</i>
38	1012113	1/8" x 1/8" 90° Fitting
39	1011210	1/4" NPT x 1 1/2" Nipple
40	20PFHA60SA0606	3/8"M x 3/8"F Swivel Union
41	1011819	1/2" Street Elbow
42	20PFBA31095614	1/4" Tube x 1/4" NPT 90°
43	20PFHA60SA0406	1/4"M x 3/8"F Swivel Union
44	10103608	Magnehelic Mount
45	10108921	Inlet Elbow Weldment
46	10104550	Inlet Adapter Weldment
47	10101942	3/8" Flat Washer - Galv. <i>(Eight Required)</i>
48	10101938	3/8 -16 Hex Nut Galv. <i>(Four Required)</i>
49	1011747	3/8-16 x 1" Bolt - Zinc <i>(13 Required)</i>
50	10104502	Dump Section Gasket
51	10104503	Vacuum Discharge Tube
52	10109020	1/4" NPT Inline Air Filter
53	1011809	3/8" NPT Tee
54	20PFHA24SA0606	3/8" SS Hex Nipple
55	20PFHA60SA0806	1/2"M x 3/8"F Swivel Union
56	20PFHA60UA0606	3/8" (M) x 3/8" (F) 90° Swivel <i>(Two Required)</i>
—	109V521	Operator's Manual - Blower

PART NUMBERS AND SCHEMATICS

Figure 3: Rear Assembly



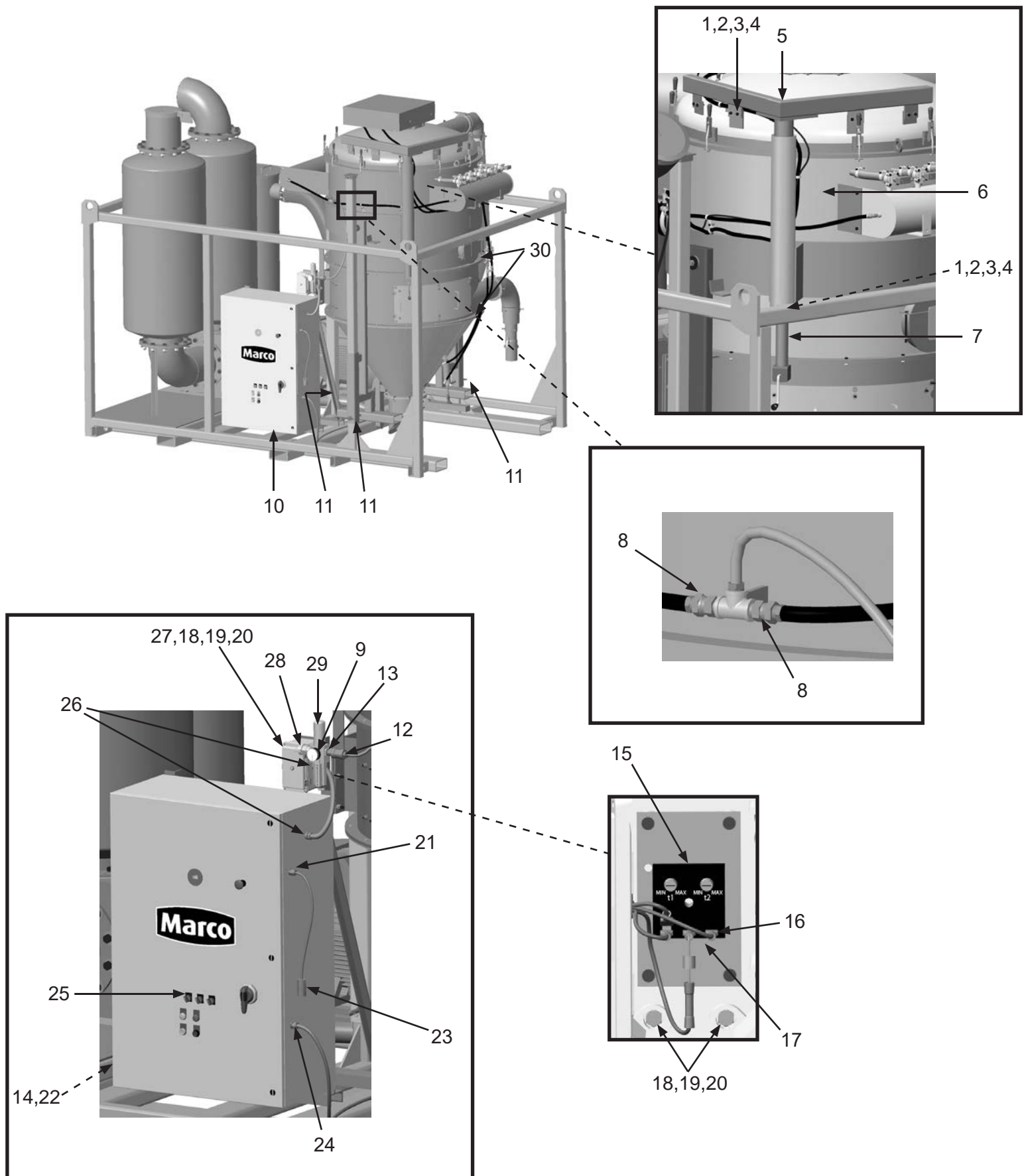
PART NUMBERS AND SCHEMATICS

Left Side Assembly

Item #	Part #	Description
Fig. 4		
1	10104234	3/8-16 x 1-1/4" Hex Bolt Zinc <i>(Eight Required)</i>
2	10101942	3/8" Flat Washer - Galvanized <i>(40 Required)</i>
3	10101936	3/8" Lock Washer - Zinc <i>(11 Required)</i>
4	1012318	3/8 -16 Hex Nut <i>(11 Required)</i>
5	10104472	Vacuum Lid Lift
6	10104434	Vacuum Top Section
7	10104638	Trailer Jack
8	20PFHA60SA0606	Union Swivel 3/8" (M) x 3/8" (F) <i>(Two Required)</i>
9	1028606	1/4" Pressure Gauge 160 Psi
10	10106295	Vacuum Control Panel
11	10103788	Hitch Pin - 3/4" x 6-1/2" Long <i>(Three Required)</i>
12	20PFHA24SB1206	3/4" x 3/8" Reducing Bushing
13	10103317	3/4" x 2" 153 Nipple
14	10106128	3" Flexible Sealtite Conduit
15	10106818	Vacuum Control Timer
16	10104109	6 Amp 50-Volt Rectifier
17	10105193	Enclosure Panel
18	1012154	1/4-20 x 1 Hex Bolt <i>(Four Required)</i>
19	10101940	1/4" Flat Washer - Galvanized <i>(Four Required)</i>
20	10101939	1/4-20 Stainless Steel Lock Nut With Nylon Insert <i>(Four Required)</i>
21	10104703	Cord Grip Nylon 1/2"-NPT .2-.47 Diameter
22	10106132	3" x 90° Conduit Hub
23	1015556	Female Twist Plug 3-Prong
24	20RCG5050	Cord Grip 1/2"-NPT .5-.625 Diameter
25	10103305	Selector Switch - 2-Way <i>(Three Required)</i>
26	20RST50	Straight Liquid Tite Connector Fitting
27	10104615	8" x 4" x 5" Fiberglass Enclosure
28	10ME1	3/4" Coupling 2-Lug Male
29	10103257	74 Series Filter / Regulator
30	10104426	Vacuum Hopper Section Gasket

PART NUMBERS AND SCHEMATICS

Figure 4: Left Side Assembly



PART NUMBERS AND SCHEMATICS

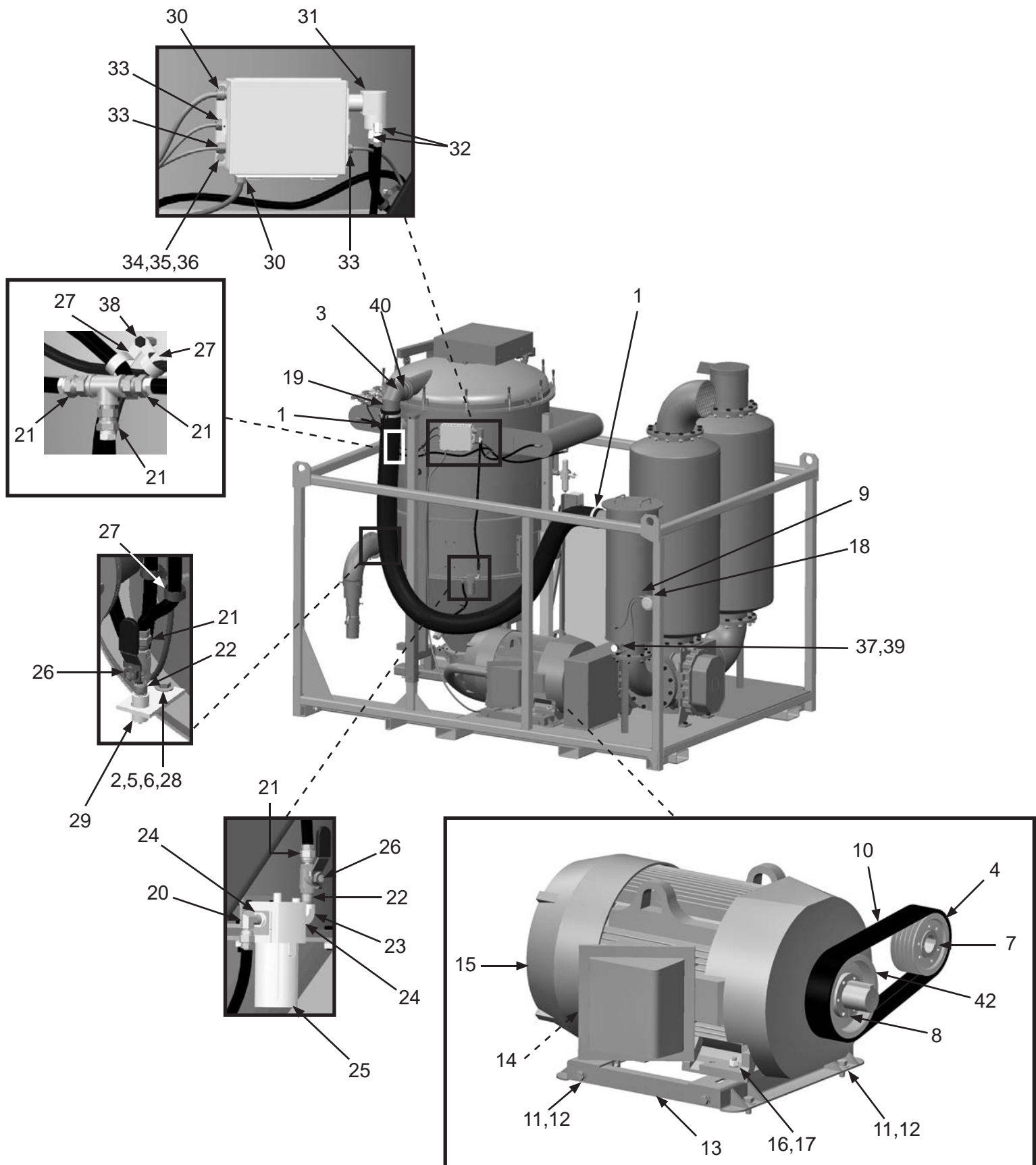
Right Side Assembly

Item #	Part #	Description
Fig. 5		
1	10104640	6" Double Bolt Clamp (Two Required)
2	10101942	3/8" Flat Washer (Five Required)
3	10104637	6" Bandlock Clamp
4	10106347	5/5V 8.50" Sheave
5	1028617	3/8-16 x 1-3/4" Shoulder Bolt (Seven Required)
6	10101936	3/8" Lock Washer - Zinc (Seven Required)
7	10104814	Bushing 2.375" Bore
8	10106107	Bushing 2-7/8" Bore
9	10108373	1/8" NPT Inline Air Filter
10	10106405	5 Strand 5VP670 Belt - 67"
11	10103417	3/4-10 UNC x 1-3/4" Bolt (Two Required)
12	10103418	3/4" Washer (Four Required)
13	10106346	200 HP Motor Base
14	10106129	3" Straight Conduit Hub
15	10106345	200 HP 3 Phase Electric Motor
16	10103420	3/4-10 UNC Nut (Four Required)
17	10103419	3/4" Lock Washer (Four Required)
18	10109021	0-80" Differential Pressure Gauge
19	10104636	6" x 90° Elbow Non-Plated
20	20PFHA60UA0606	3/8"M x 3/8"F 90° Swivel Union
21	20PFHA60SA0606	Union Swivel 3/8" (M) x 3/8" (F) (Three Required)
22	1011209	3/8 NPT Close Nipple
23	20PFHA25UG0606	3/8" Street Elbow
24	20PFHA24SB0806	1/2" x 3/8" Reducing Bushing (Two Required)
25	10104674	Lubricator 1/2" NPT 156 CFM

Item #	Part #	Description
26	1080060	3/8" NPT Full Port Brass Ball Valve (Two Required)
27	10103624	1" Rubber Cushioned Loop Clamp
28	1012318	3/8 -16 Hex Nut
29	10104597	Airline Drain
30	20RCG5050	1/2" Npt x .5—.625 Diameter Cord Grip (Two Required)
31	10104671	Vibrator Solenoid
32	20PFHA60UA0406	1/4" (M) x 3/8" (F) 90° Swivel (Two Required)
33	10104703	1/2" Npt x .2—.47 Diameter Nylon Cord Grip (Three Required)
34	10101939	1/4-20 Stainless Steel Lock Nut with Nylon Insert (Four Required)
35	10101940	1/4" Flat Washer - Galvanized (Four Required)
36	20100125	1/4-20 x 3/4" Zinc Hex Bolt (Four Required)
37	10104677	Vacuum Gauge
38	10L805302	Jr & Sr Spindle Bolt (10 Required)
39	1011844	1/4" Galv. Pipe Tee
40	10106513	6" Gasket (Not Shown)
41	1011809	3/8" NPT Tee
42	10106348	5/5V 11.3" Sheave

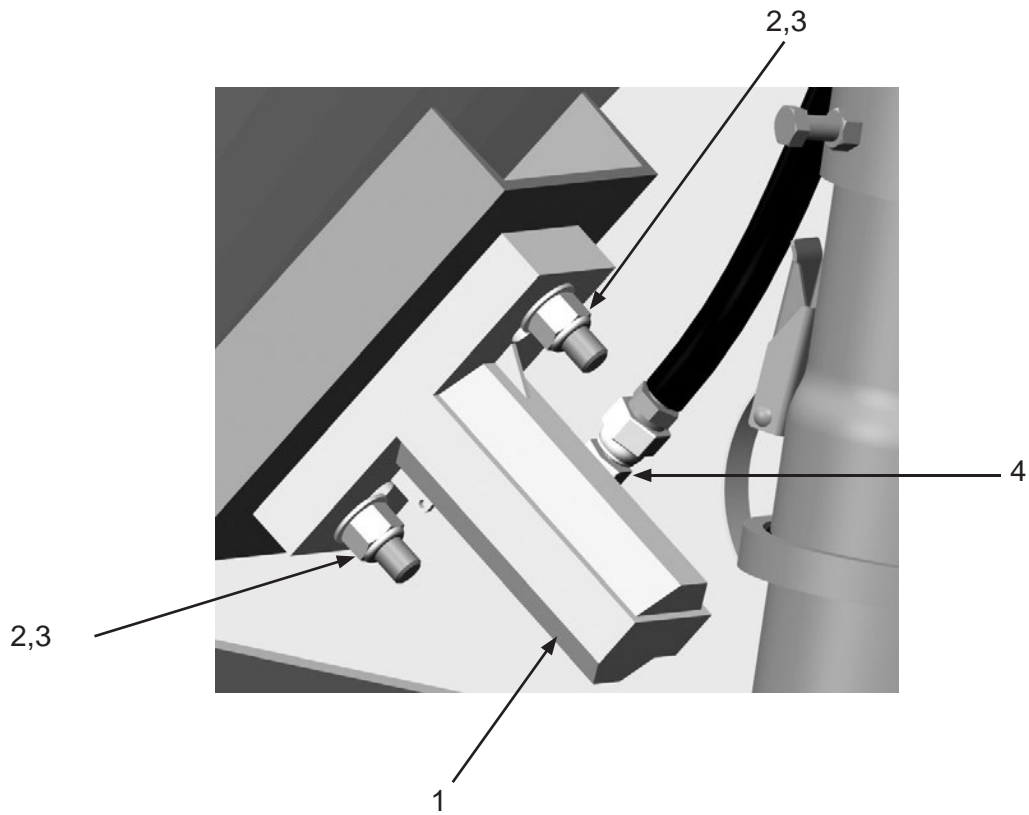
PART NUMBERS AND SCHEMATICS

Figure 5: Right Side Assembly



PART NUMBERS AND SCHEMATICS

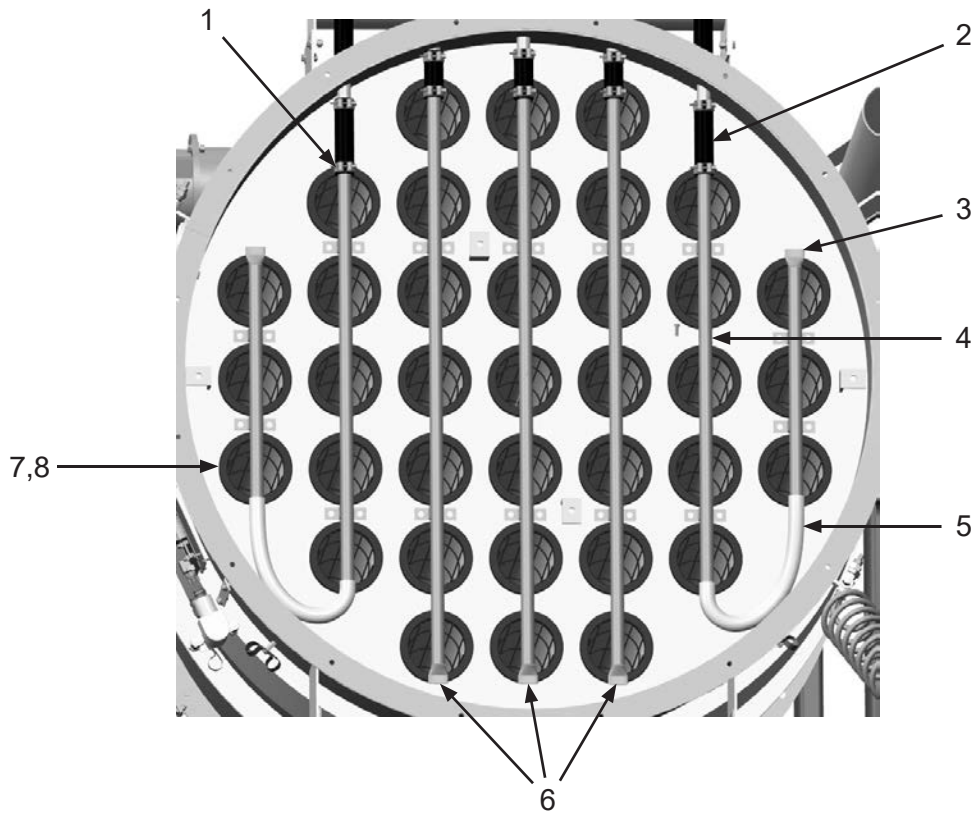
Figure 6: Pneumatic Piston Vibrators



Item #	Part #	Description
Fig. 6		
1	10104665	APV Series Piston Vibrator
2	20100124	1/2-13 Hex Lock Nut - Zinc (<i>Two Required</i>)
3	10100674	1/2" Flat Washer (<i>Two Required</i>)
4	20PFHA60UA0406	1/4" (M) x 3/8" (F) 90° Swivel Union

PART NUMBERS AND SCHEMATICS

Figure 7: Filter Bag Pulsers



Item #	Part #	Description
--------	--------	-------------

Fig. 7

1	10103736	T-Bolt Hose Clamp For 1" I.D. <i>(10 Required)</i>
2	10106509	1" 75W Marine Hose - 100 PSI <i>(Five Required)</i>
3	10104562	Pulser System Short Blowpipe <i>(Two Required)</i>
4	10104565	Pulser System Medium Blowpipe <i>(Two Required)</i>
5	10104680	1" Flexible Tubing For Blowpipes <i>(Two Required)</i>
6	10104567	Pulser System Long Blowpipe <i>(Three Required)</i>
7	10104633	Vacuum Baghouse Filter <i>(37 Required)</i>
8	10104634	Vacuum Baghouse Filter Cage <i>(37 Required)</i>

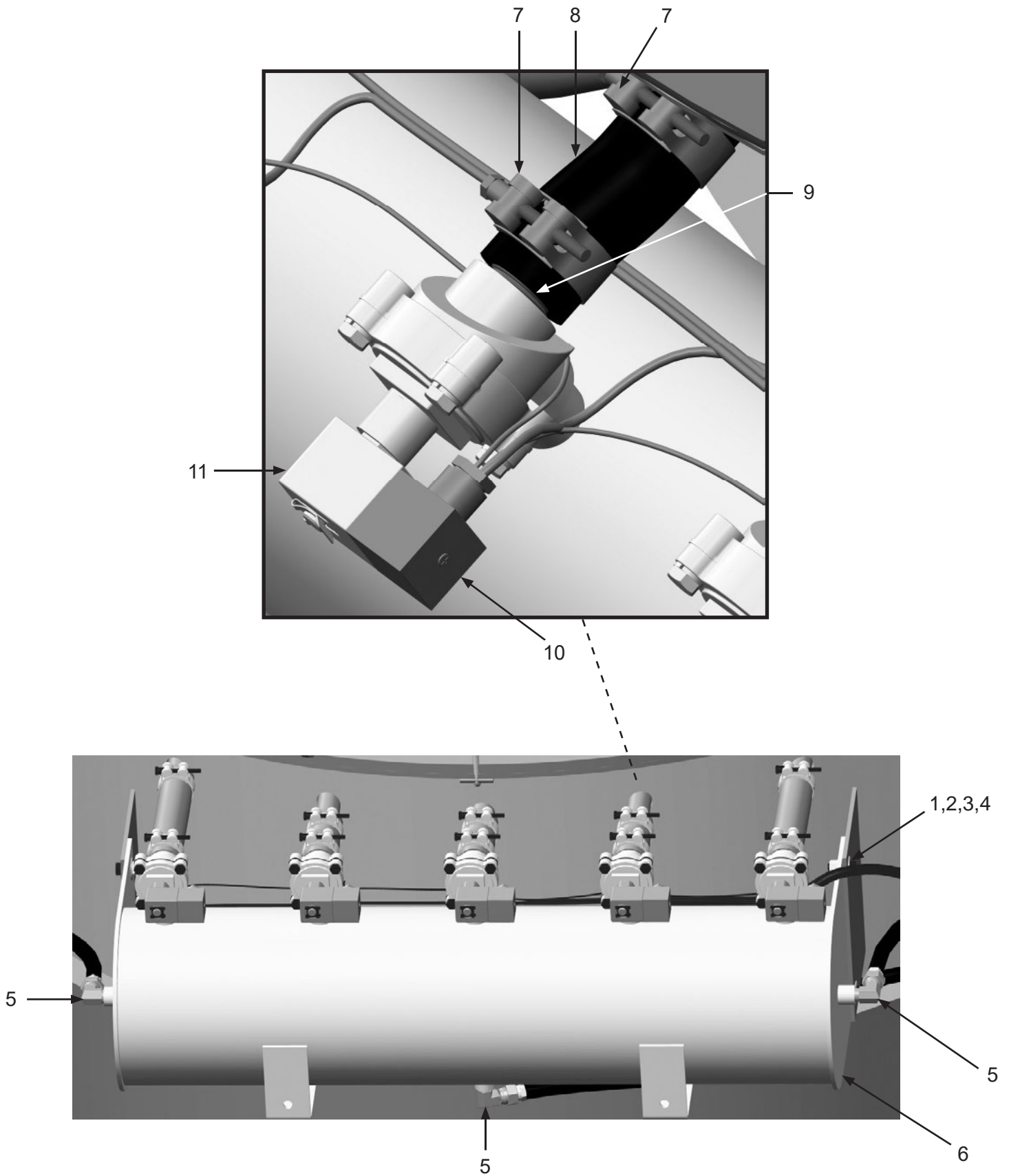
PART NUMBERS AND SCHEMATICS

Pulser System Assembly

Item #	Part #	Description
Fig. 8		
1	10101942	3/8" Flat Washer - Galvanized <i>(Eight Required)</i>
2	10101936	3/8" Lock Washer - Zinc <i>(Four Required)</i>
3	1011747	3/8-16 x 1" Bolt <i>(Four Required)</i>
4	1012318	3/8 -16 Hex Nut <i>(Four Required)</i>
5	20PFHA60UA0606	3/8"M x 3/8"F 90° Swivel Union
6	10104498	Vacuum Header
7	10103736	T-Bolt Hose Clamp For 1" I.D. <i>(10 Required)</i>
8	10106509	1" Marine Hose - 100 psi <i>(Per Foot)</i>
9	10104500	3/4" NPT x 1-1/2" Toe Nipple <i>(Five Required)</i>
10	10105287	Humphrey Din Connector <i>(Included with Item #16) (Five Required)</i>
11	10104666	3/4" Diaphragm Valve with Solenoid <i>(Five Required)</i>
—	10107192	Pilot Valve Repair Kit
—	10107193	Diaphragm Repair Kit

PART NUMBERS AND SCHEMATICS

Figure 8: Pulser System Assembly



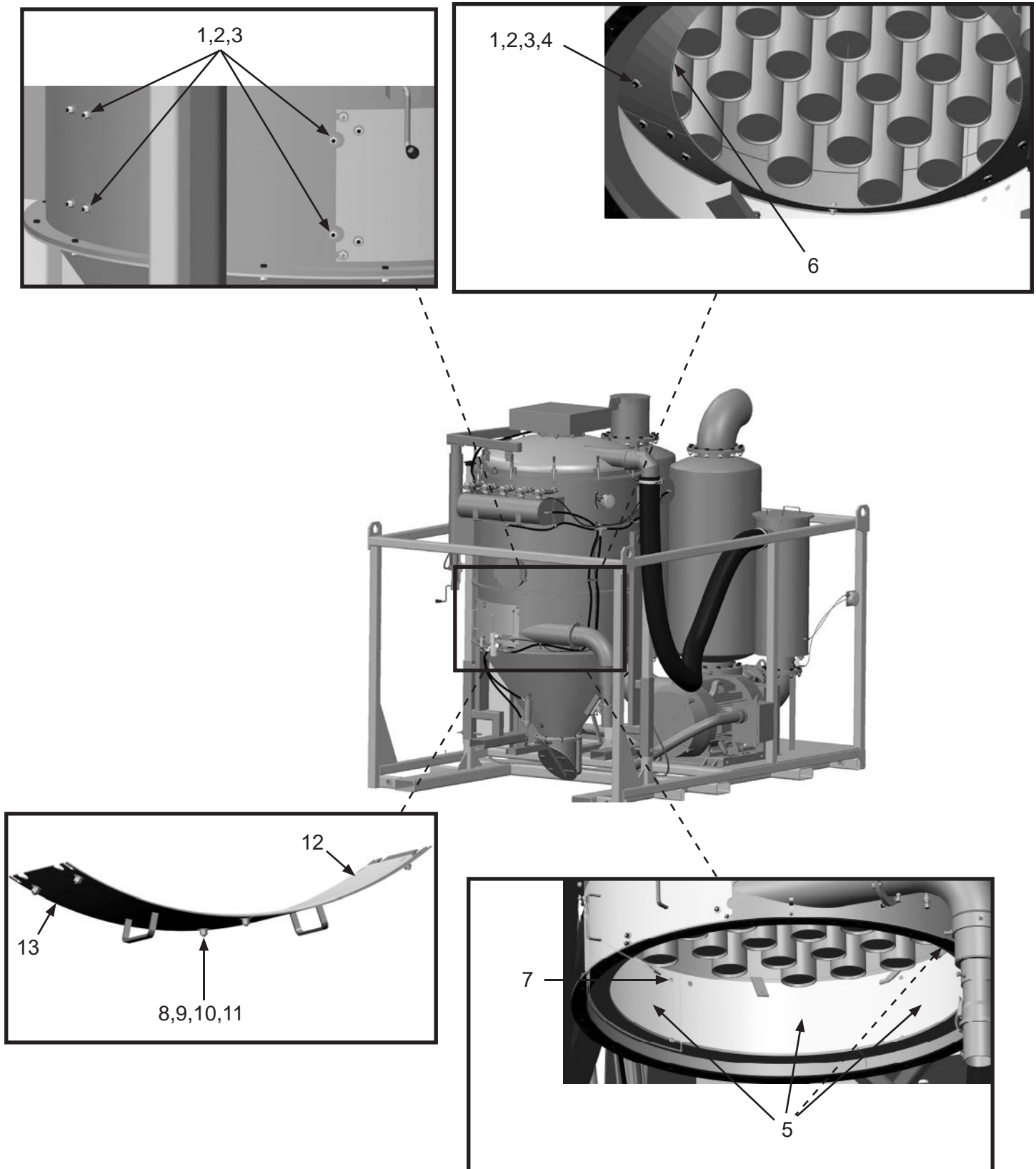
PART NUMBERS AND SCHEMATICS

Wear Plates and Baffles

Item #	Part #	Description
Fig. 9		
1	10101942	3/8" Flat Washer - Galvanized <i>(35 Required)</i>
2	10101936	3/8" Lock Washer - Zinc <i>(35 Required)</i>
3	1012318	3/8-16 Hex Nut <i>(35 Required)</i>
4	1011747	3/8-16 x 1" Bolt <i>(15 Required)</i>
5	10104489	Vacuum Wear Plates <i>(Four Required)</i>
6	10104490R	Vacuum Baffle <i>(Three Required)</i>
7	10104705	3/8-16 FH Sq Neck x 1" Bolt Zinc <i>(16 Required)</i>
8	10101942	3/8" Flat Washer - Galvanized <i>(20 Required)</i>
9	10101936	3/8" Lock Washer - Zinc <i>(16 Required)</i>
10	1012318	3/8 -16 Hex Nut GALV. <i>(12 Required)</i>
11	10104705	3/8-16 FH SQ Neck x 1" Bolt Zinc <i>(12 Required)</i>
12	10105189	Wear Door Liner
13	10105190	Wear Door

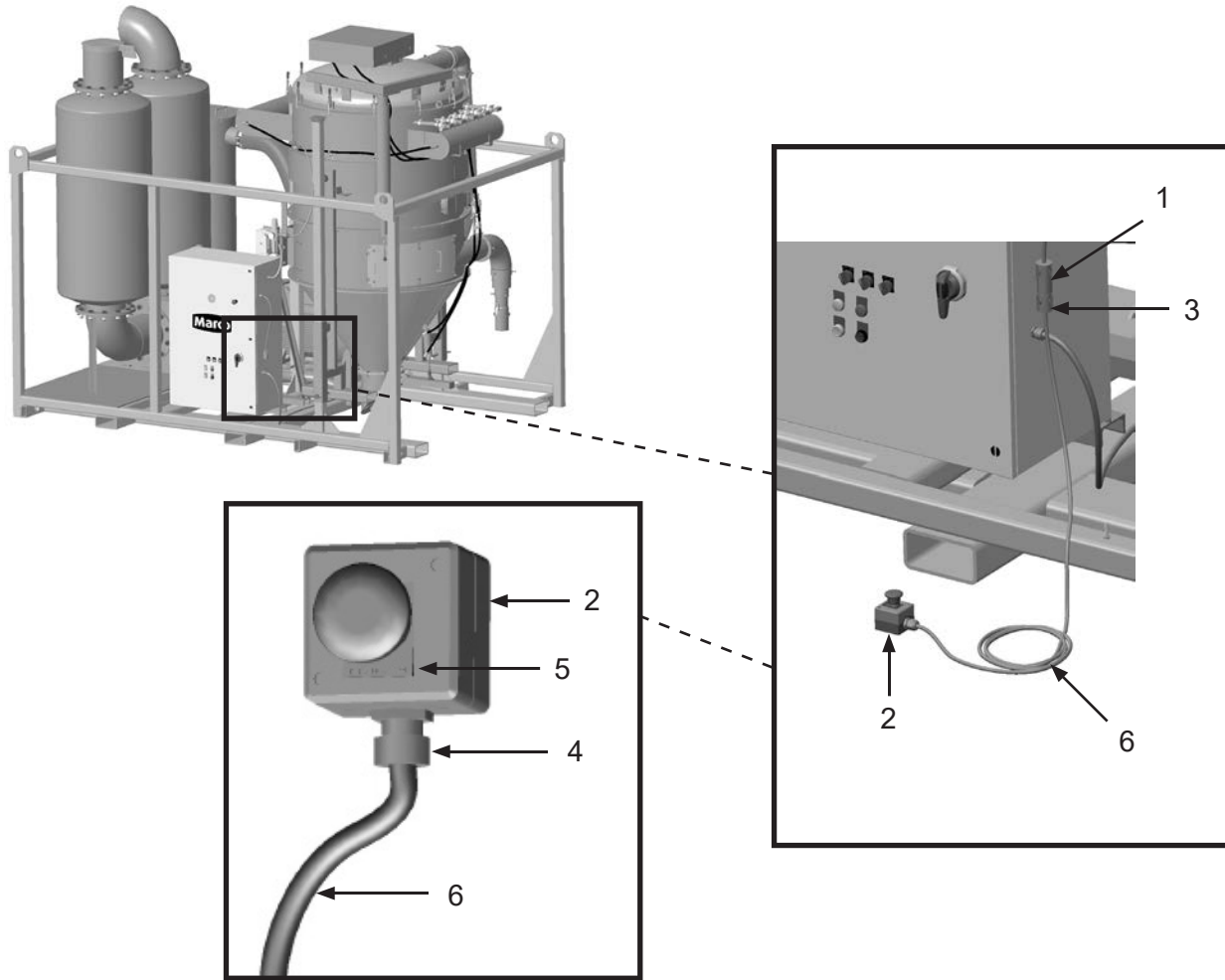
PART NUMBERS AND SCHEMATICS

Figure 9: Wear Plates and Baffles



PART NUMBERS AND SCHEMATICS

Figure 10: Emergency-Stop Station



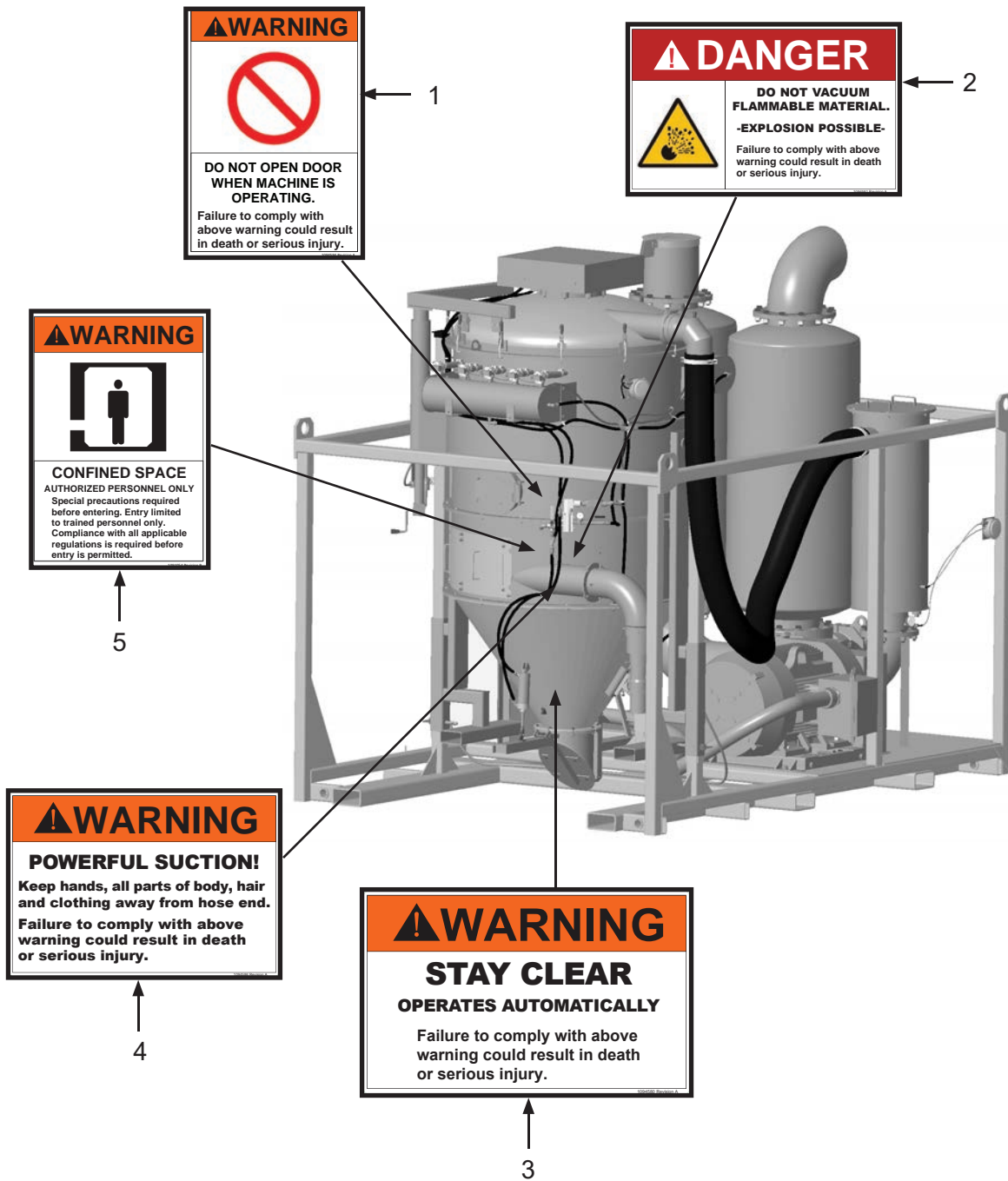
Item #	Part #	Description
--------	--------	-------------

Fig. 10

—	10107200	Remote Emergency-Stop Station <i>Includes Item #'s: 2, 3, 4, 5, and 6 (100')</i>
1	1015556	Female Twist Lock Plug – Three Prong
2	10104071	E-Stop Control Station
3	1015555	Male Twist Lock Plug – Three Prong
4	10104703	Cord Grip Nylon 1/2"-NPT .2-.47 Diameter
5	10104063	Legend Plate – Emergency Stop
6	1015540	16/2 Xtreme-Duty® Power Cord – Red (Per Foot)

PART NUMBERS AND SCHEMATICS

Figure 11: Hazard Identification Decals



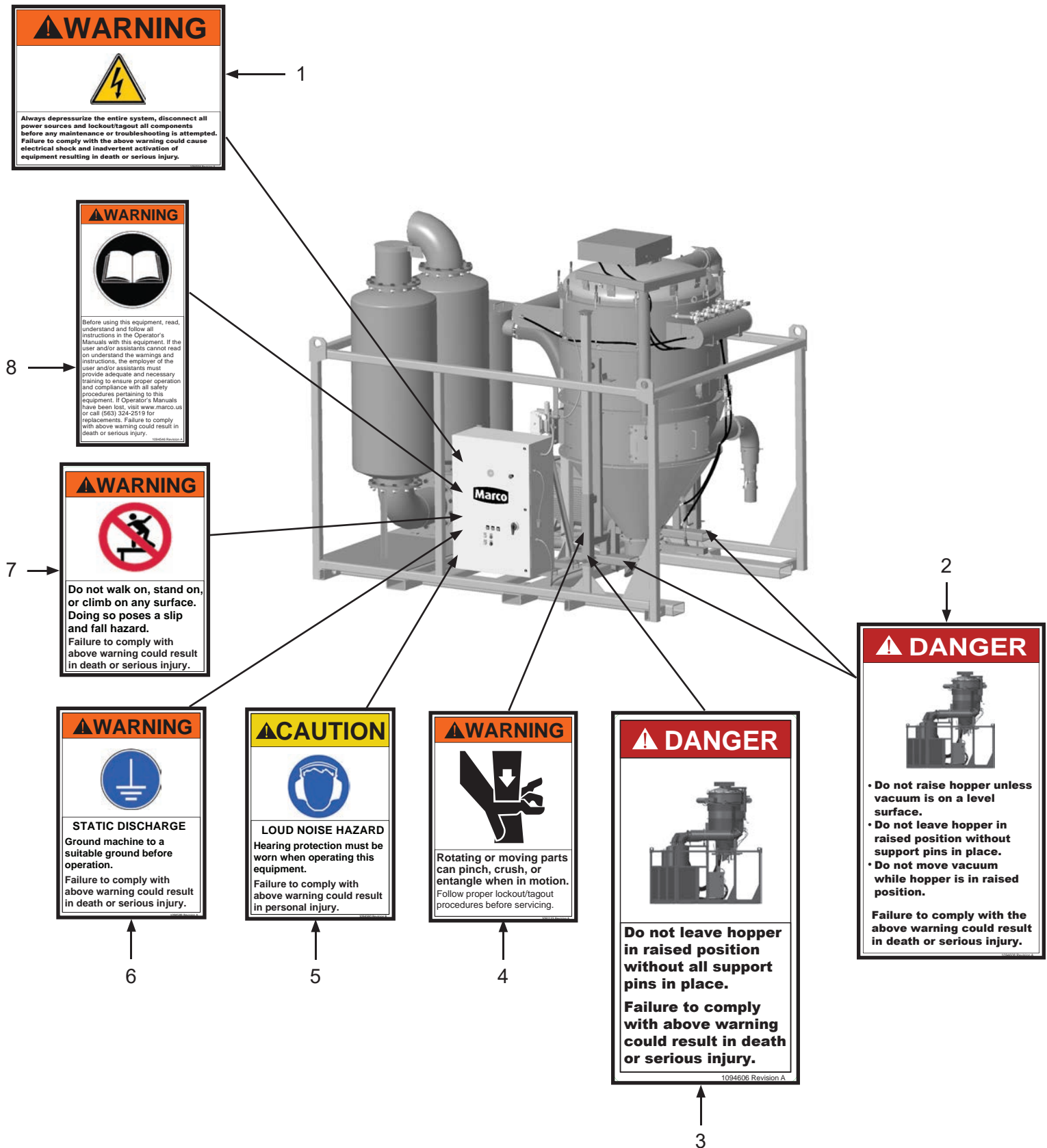
Item #	Part #	Description
--------	--------	-------------

Fig. 11

1	1094594	Do Not Open Door Warning Decal
2	1094581	No Not Vacuum Flammable Material Danger Decal
3	1094580	Stay Clear Warning Decal
4	1094586	Powerful Suction Warning Decal
5	1091054	Confined Space Warning Decal

PART NUMBERS AND SCHEMATICS

Figure 12: Hazard Identification Decals (cont.)



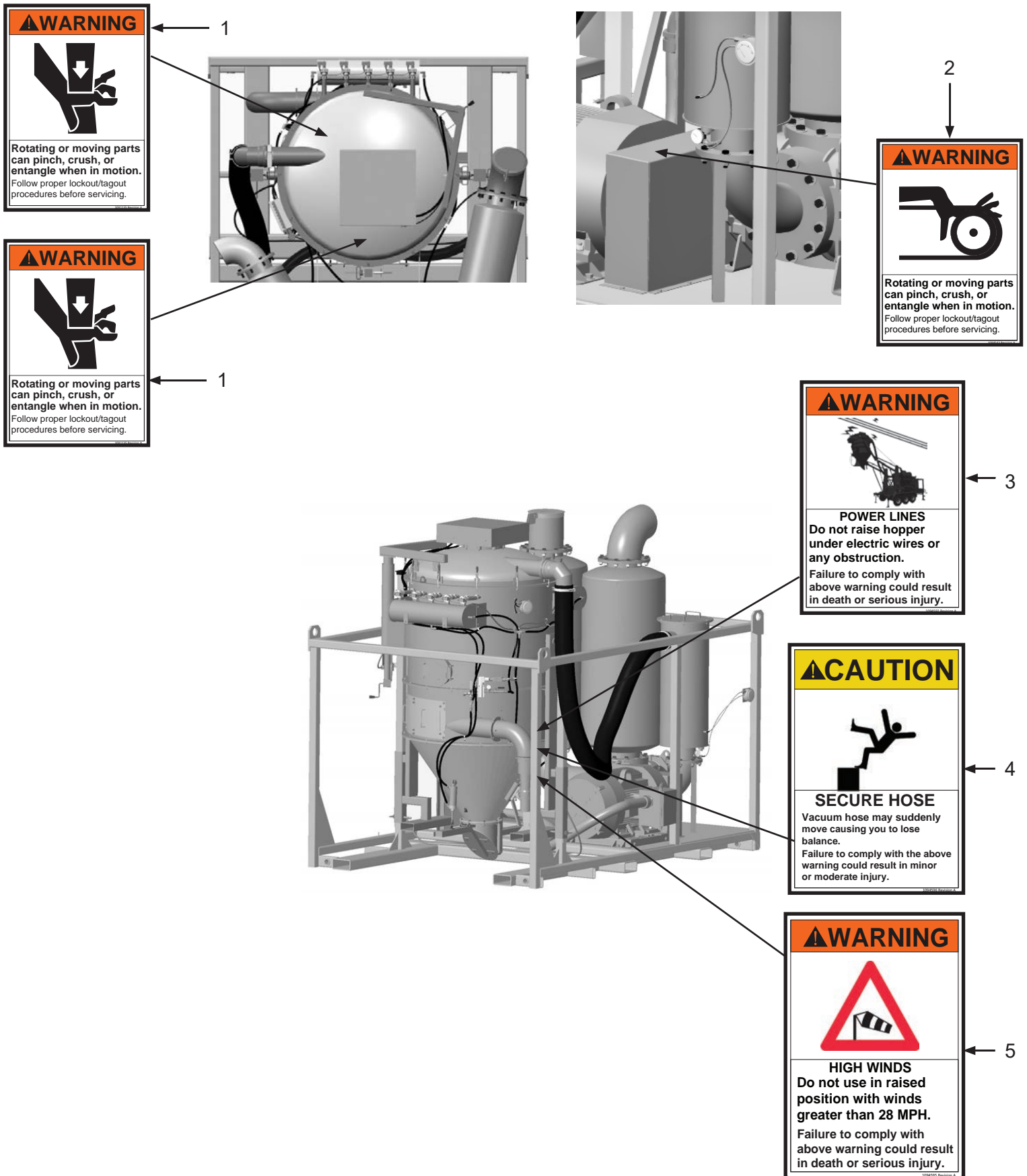
PART NUMBERS AND SCHEMATICS

Figure 12: Hazard Identification Decals (Cont.)

Item #	Part #	Description
Fig. 12		
1	1094556	Lockout/Tagout Warning Decal
2	1094608	Hopper Danger Decal
3	1094606	Hopper Position Danger Decal
4	1091135	Rotating or Moving Parts Warning Decal
5	1094590	Loud Noise Hazard Warning Decal
6	1094589	Static Discharge Warning Decal
7	1094591	Do Not Climb On Warning Decal
8	1094546	Read Manual Warning Decal

PART NUMBERS AND SCHEMATICS

Figure 13: Hazard Identification Decals (cont.)






PART NUMBERS AND SCHEMATICS

Figure 13: Hazard Identification Decals (Cont.)

Item #	Part #	Description
Fig. 13		
1	1091135	Rotating or Moving Parts Warning Decal
2	1094543	Rotating or Moving Parts Warning Decal
3	1094592	Power Line Warning Decal
4	1094596	Secure Hose Caution Decal
5	1094595	High WindsWarning Decal

OPTIONAL ACCESSORIES

	Part Numbers	VACUUM HOSE INSERTS
		Size
	10104831	4"
	10104828	5"
	10104825	6"

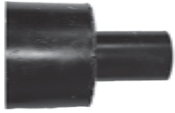


OPTIONAL ACCESSORIES








**Part
Numbers**

	VACUUM HOSE						
	Vacuum Hose I.D.	Length	Vacuum HG	Cover Material	Reinforcement Material	Liner	Hose Color
10VH11250	1-1/2"	50 Ft.	29"	Pliovic®	Pliovic® PVC Helix	Polyurethane	Black
10VH225	2"	25 Ft.	29"	Pliovic®	Pliovic® PVC Helix	Polyurethane	Blue
10VH250	2"	50 Ft.	29"	Pliovic®	Pliovic® PVC Helix	Polyurethane	Blue
10VH200	2"	100 Ft.	29"	Pliovic®	Pliovic® PVC Helix	Polyurethane	Blue
10VH2550	2-1/2"	50 Ft.	29"	Pliovic®	Pliovic® PVC Helix	Polyurethane	Blue
10VH325	3"	25 Ft.	29"	Pliovic®	Pliovic® PVC Helix	Polyurethane	Blue
10VH350	3"	50 Ft.	29"	Pliovic®	Pliovic® PVC Helix	Polyurethane	Blue
10VH300	3"	100 Ft.	29"	Pliovic®	Pliovic® PVC Helix	Polyurethane	Blue
10VH425	4"	25 Ft.	29"	Pliovic®	Pliovic® PVC Helix	Polyurethane	Blue
10VH450	4"	50 Ft.	29"	Pliovic®	Pliovic® PVC Helix	Polyurethane	Blue
10VH400	4"	100 Ft.	29"	Pliovic®	Pliovic® PVC Helix	Polyurethane	Blue
10VH525	5"	25 Ft.	29"	Pliovic®	Pliovic® PVC Helix	Polyurethane	Blue
10VH550	5"	50 Ft.	29"	Pliovic®	Pliovic® PVC Helix	Polyurethane	Blue
10VH500	5"	100 Ft.	29"	Pliovic®	Pliovic® PVC Helix	Polyurethane	Blue
10VH625	6"	25 Ft.	25"	Pliovic®	Pliovic® PVC Helix	Polyurethane	Blue
10VH650	6"	50 Ft.	25"	Pliovic®	Pliovic® PVC Helix	Polyurethane	Blue
10VH600	6"	100 Ft.	25"	Pliovic®	Pliovic® PVC Helix	Polyurethane	Blue
10VH825	8"	25 Ft.	25"	Pliovic®	Pliovic® PVC Helix	Polyurethane	Blue
10VH850	8"	50 Ft.	25"	Pliovic®	Pliovic® PVC Helix	Polyurethane	Blue

OPTIONAL ACCESSORIES

	Part Numbers	VACUUM HOSE REDUCERS
		Size
	10106712	8" x 4"
	10106716	6" x 4"
	10106872	6" x 5"

	Part Numbers	WYE ADAPTERS
		Size
	10106719	4" x 2" x 2"
	10107485	6" x 2" x 2"
	10106723	6" x 4" x 4"
	10106727	8" x 4" x 4"

	Part Numbers	VACUUM HOSE MENDERS			
		Vacuum Hose I.D.	Mender Length	Thickness	Material
	10HM2	2"	8"	1/8"	Steel
	10HM3	3"	9"	1/8"	Steel
	10HM4	4"	10"	1/8"	Steel
	10HM5	5"	11"	1/8"	Steel
	10HM6	6"	12"	1/8"	Steel
	10HM8	8"	14"	1/8"	Steel

MAINTENANCE NOTES

[illegible]

MAINTENANCE NOTES

[illegible]

CONTACT CENTER

- 3425 East Locust Street
Davenport, IA 52803

ph: 800.BLAST.IT (800.252.7848)

ph: 563.324.2519

fax: 563.324.6258

REGIONAL BRANCH OFFICES

- Iowa
Davenport
- Louisiana
Gonzales
Lafayette
- Ohio
Youngstown
- Texas
Beaumont
Corpus Christi
Deer Park



ABRASIVES

BLASTING

COATING

DUST COLLECTION

RENTAL & SERVICE

SAFETY

VACUUMS

40+ NATIONWIDE SHIPPING LOCATIONS



★ Marco Regional Branch Offices
and Shipping Locations

● Direct Shipping Locations

CONTACT MARCO

800.BLAST.IT

(800.252.7848)

563.324.2519

FAX: 563.324.6258

WWW.MARCO.US

SALES@MARCO.US