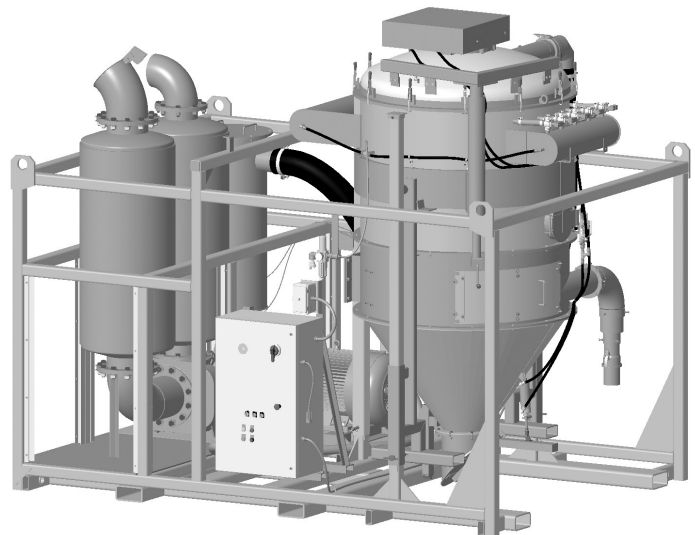
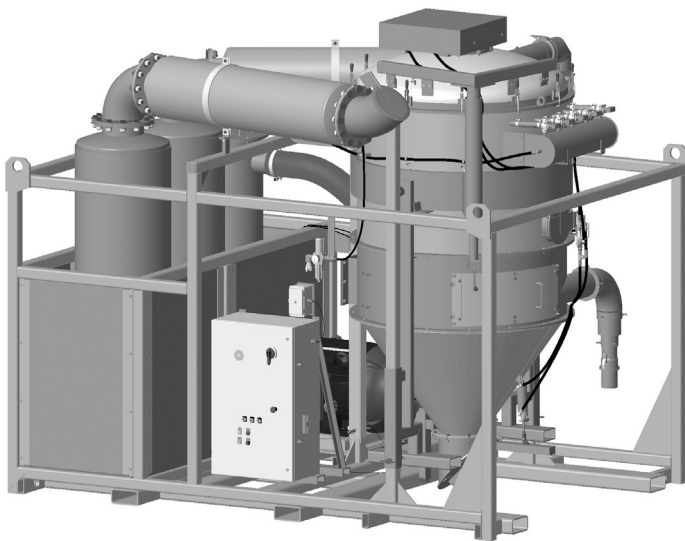




# VACMASTER® 15T ELECTRIC ABRASIVE VACUUMS



## PART NUMBERS AND SCHEMATICS GUIDE

## Company Profile

Allredi was formed in the early 2020, when two of the largest distributors in the blasting, coating, safety, and environmental industry, APE Companies and Marco Group International, joined forces. While the qualities both companies are known for have not changed, a lot about our business is new. New abilities. New agilities. New ways to help you win. This calls for a new name, Allredi.

This name exemplifies what we have become. It is completely oriented to the needs of our customers. To your needs. It says that when you call us for anything – products, service, expert advice, anything – you can consider it done. Or even better, Allredi done.

We are your right-now supplier. From skills to SKUs, we deliver the goods fast. So you can be more agile every minute, every day. This is who we are. This is what our new name means. Go ahead and expect excellence, because we're bringing it.

## Our Mission and Vision

To be the industry's preferred partner in surface preparation solutions through unrivaled technical expertise, customer experience, product availability, and tailored service offerings.

## The Allredi Difference

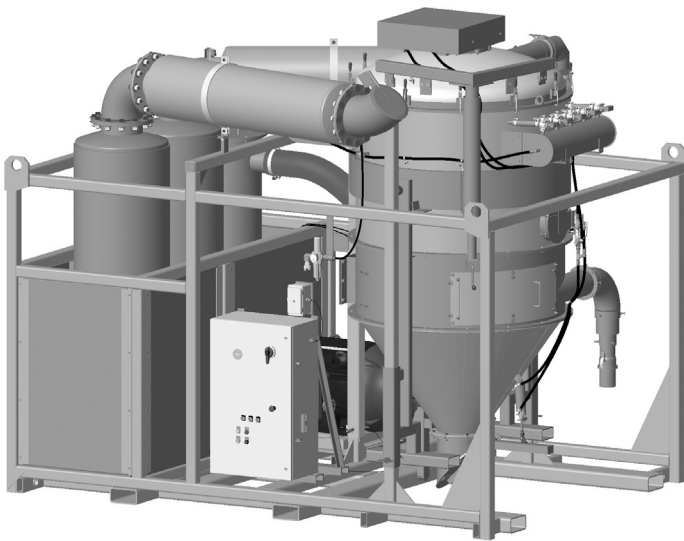
- **Industry Experience** – With Allredi on your team, you have access to expertise which can only come from decades of industry leadership. We have organized our engineering department, production specialists, customer operations, and safety support into a "Center of Competence." As an Allredi customer, you have access to hundreds of years of cumulative experience related to your operations.
- **Manufacturing Excellence** – Allredi is a U.S. based manufacturer of equipment for the Surface Preparation and Protective Coatings industries. Allredi's engineers benchmark the industry to ensure that we design and manufacture superior products that set the "Gold Standard" for performance, safety, and quality.
- **Legendary Customer Service** – Allredi's legendary customer service team is staffed by friendly, highly-trained individuals who are focused on providing the highest level of product support, order accuracy, and customer satisfaction.
- **Product Availability** – We stock over 10,000 SKU's and have over 45 shipping locations to serve North American and International markets for all major brands of blasting, coating, environmental, and safety equipment. Allredi is your right-now supplier, so you can keep your projects moving. From our foundation of strong relationships, we have built a nationwide network that puts vast inventory and ready service close to our customers. We provide advanced expertise, and we deliver the goods fast – so you can easily access the products and services you need to me more agile every minute, every day.
- **Technology Leadership** – Our website provides: Operator's Manuals, Part Numbers and Schematics Guides, SDS information, and key product features and specifications, providing access to information 24/7.

# TABLE OF CONTENTS

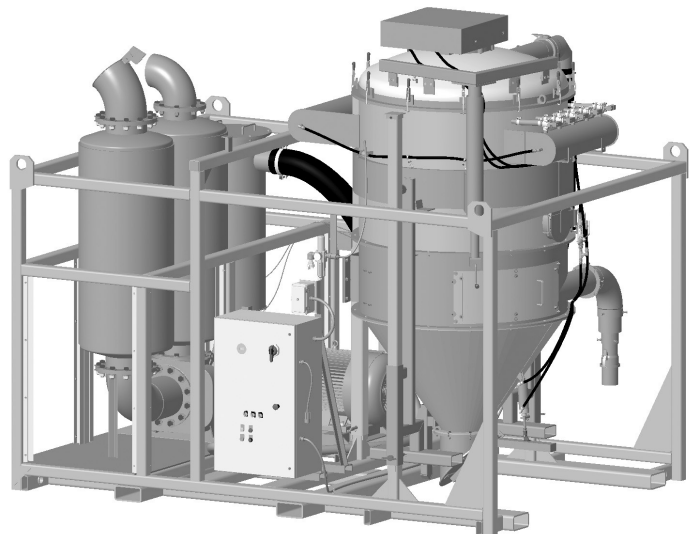
<b>Company Profile</b> .....	<b>1</b>
<b>Part Numbers</b> .....	<b>3</b>
<b>Specifications</b> .....	<b>4</b>
<b>Assembly Part Numbers and Schematics</b> .....	<b>5</b>
Front Assembly .....	5
Front Assembly with with Sound Reduction Package ....	7
Top Assembly .....	9
Rear Assembly .....	11
Left Side Assembly .....	13
Right Side Assembly .....	15
Pneumatic Piston Vibrators .....	17
Filter Bag Pulsers .....	18
Pulser System Assembly .....	19
Wear Plates and Baffles .....	21
Sound Panels and Straps .....	23
Emergency-Stop Station .....	24
Hazard Identification Decals .....	25
<b>Optional Accessories</b> .....	<b>30</b>
<b>Literature References</b> .....	<b>32</b>

## PART NUMBERS

Part Numbers	VACMASTER® 15T ELECTRIC ABRASIVE VACUUMS			
	Sound Reduction	150 Horsepower Electric Motor	Acrylic-Coated Filter Bags	Filter Bag Quantity
10106338	X	X	X	37
10106337		X	X	37



(10106338)



(10106337)



## SPECIFICATIONS

<b>Performance:</b>	MAX 2367 CFM
<b>Filter Cartridge Style:</b>	Acrylic-Coated Filter Bags 37 Required
<b>Filter Cleaning:</b>	Pulse System, 25–30 second intervals. Pulse Duration: 200–350 millisecond
<b>Vacuum</b>	24" Hg
<b>Ducting Connections:</b>	6" I.D. Inlet with 4" adapter
<b>Inspection Ports:</b>	One 10" Viewable to Filters with access ports to hopper
<b>Material Removal:</b>	Automatic Direct Dump
<b>Blower:</b>	Rotary lobe, positive displacement with jet inlet
<b>Motor:</b>	150 Horsepower Electric 3-Phase
<b>Electrical System:</b>	460 V, 60 Hz 170 FLA
<b>Air Requirements:</b>	Clean, Dry, Compressed Air 24 CFM @ 90 PSI
<b>Motor Protection:</b>	Motors are fused in control box.
<b>Fluid Specifications:</b>	Grease/Lubricator: Mobil Polyrex EM or equivalent Vibrator Lubricator: 4 oz. pneumatic air tool oil Blower Oil: ROOTS™ synthetic lubricating oil
<b>Unit Dimensions:</b>	Weight: 10,000 pounds (empty) Length: 12' Width: 8' 6" Height: 10' 5" Raised Height: 15' 8" Dump Clearance: 7' 9"
<b>Unit Dimensions with Sound Reduction Package:</b>	Weight: 11,000 pounds (empty) Length: 12' Width: 8' 6" Height: 10' 5" Raised Height: 15' 8" Dump Clearance: 7' 9"

# ASSEMBLY PART NUMBERS AND SCHEMATICS

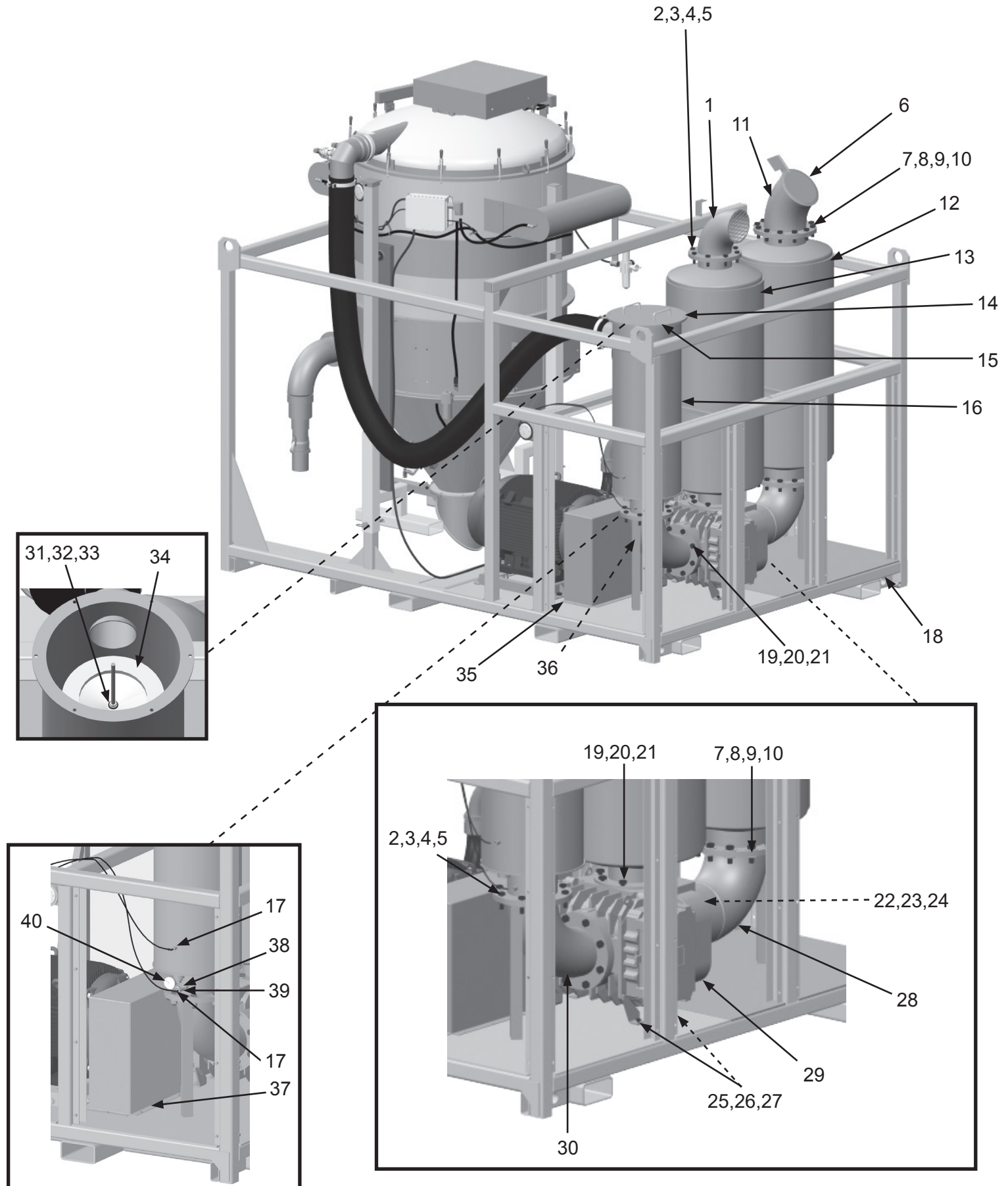
## Front Assembly

Item #	Part #	Description
<b>Fig. 1</b>		
1	10106385	Jet Port Inlet Flange
2	10100701	3/4-10 x 2-1/2" Hex Bolt (16 Required)
3	10100704	3/4" Flat Washer (32 Required)
4	10100596	3/4" Lock Washer (16 Required)
5	10100595	3/4-10 Hex Nut (16 Required)
6	10104639	10" Raincap
7	10106283	7/8-9 x 2-1/2" Grade 5 Zinc Bolt (24 Required)
8	10104716	7/8" Flat Washer - Zinc (48 Required)
9	10104717	7/8" Lock Washer - Zinc (24 Required)
10	10104822	7/8-8 Grade 5 Zinc Nut (24 Required)
11	10106309	10" Exhaust Silencer End
12	10106292	10" Discharge Silencer
13	10106291	8" Jet Port Silencer
14	10106508	Intake Filter Housing Cap
15	10104727	Air Filter Housing Gasket
16	10106279	Intake Filter Housing
17	20PFBA31095614	1/4" Tube x 1/4" NPT 90° (Two Required)
18	10106226	Electric Vacuum Skid Frame
19	10104714	3/4-10 x 1-5/8" Grade 5 Zinc Bolt (20 Required)
20	10100596	3/4" Lock Washer (20 Required)
21	10100704	3/4" Flat Washer (20 Required)
22	10104715	7/8-9 x 2" Grade 5 Zinc Bolt (12 Required)
23	10104716	7/8" Flat Washer - Zinc (12 Required)
24	10104717	7/8" Lock Washer - Zinc (12 Required)
25	10104710	1/2-13 x 2" Grade 8 Bolt (Four Required)

Item #	Part #	Description
26	10104711	1/2" Grade 8 Flat (Eight Required)
27	10104712	1/2" Grade 8 Lock Washer (Four Required)
28	10106280	10" Discharge Elbow
29	10104456	616 Blower, Top Shaft Left Discharge
30	10106284	8" Inlet Elbow Weldment
31	10101941	1/2-10 Hex Nut
32	10100674	1/2" Flat Washer
33	10102005	Rubber Washer 1-1/4" O.D. x 3/8" I.D. x 1/8"
34	10102253	Filter Cartridge 12.75" x 8.38" x 36" - Flange - .54"
35	10106379	Belt Guard
36	10106378	Belt Guard
37	10103400	3/8-16 x 3/4" Bolt (Eight Required)
38	20PFHA24SA0404	1/4" Hex Nipple
39	1011844	1/4" Pipe Tee
40	10104677	1/4"F Vacuum Gauge
—	10106896	Blower Oil 100 For below 0° F
—	10106897	Blower Oil 150 For 0 – 32° F
—	10105254	Blower Oil 220 For 32 – 90° F
—	10106898	Blower Oil 320 For above 90° F

# PART NUMBERS AND SCHEMATICS

Figure 1: Front Assembly



## PART NUMBERS AND SCHEMATICS

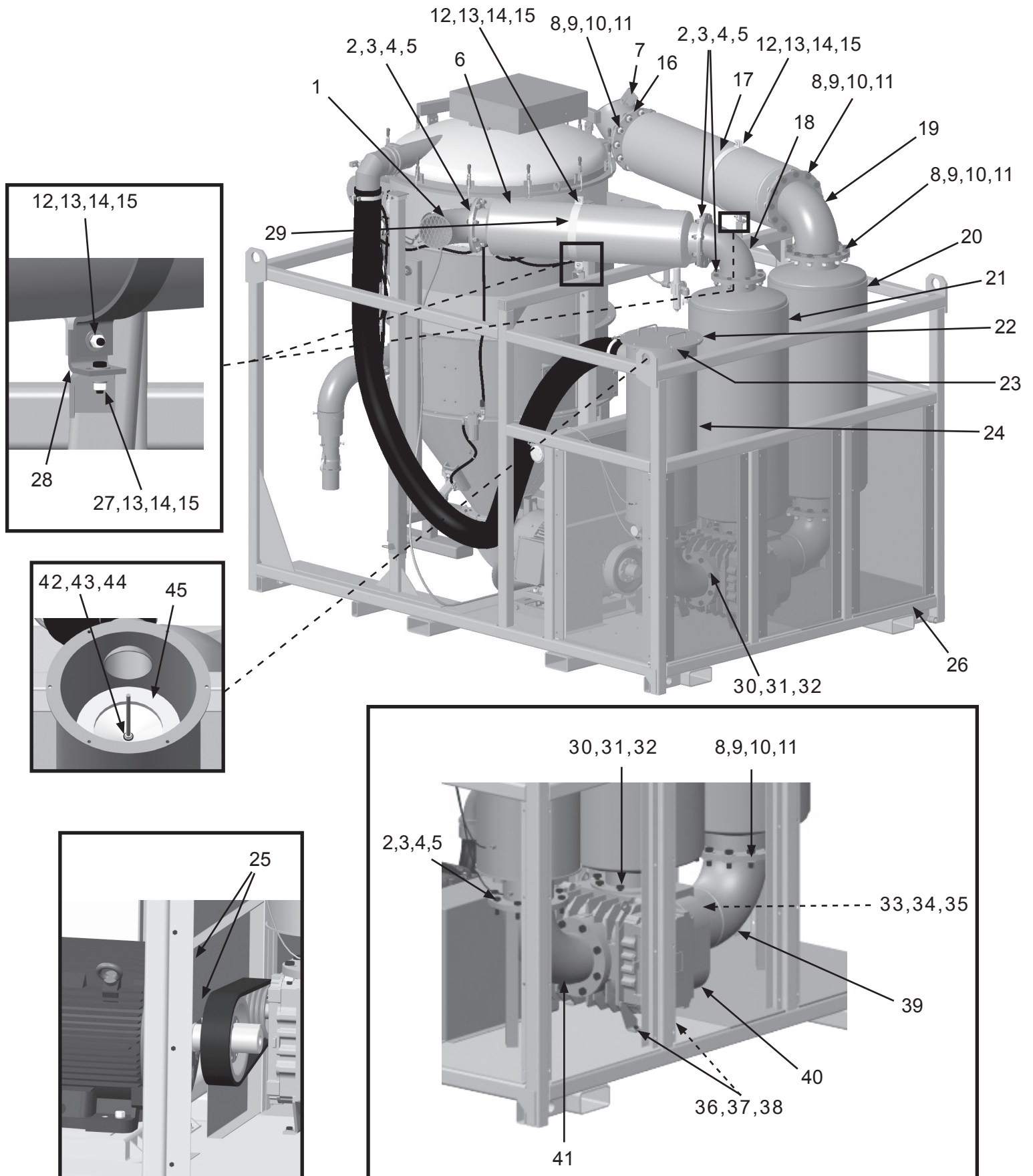
### Front Assembly with with Sound Reduction Package

Item #	Part #	Description
<b>Fig. 2</b>		
1	10106385	Jet Port Inlet Flange
2	10100701	3/4-10 x 2-1/2" Hex Bolt (32 Required)
3	10100704	3/4" Flat Washer (64 Required)
4	10100596	3/4" Lock Washer (32 Required)
5	10100595	3/4-10 Hex Nut (32 Required)
6	10106293	8" Secondary Jet Port Silencer
7	10104639	10" Raincap
8	10106283	7/8-9 x 2-1/2" Grade 5 Zinc Bolt (44 Required)
9	10104716	7/8" Flat Washer - Zinc (88 Required)
10	10104717	7/8" Lock Washer - Zinc (44 Required)
11	10104822	7/8"-8 Grade 5 Zinc Nut (44 Required)
12	1028617	3/8-16 x 1-3/4" Shoulder Bolt (Four Required)
13	10101942	3/8" Flat Washer Galvanized (10 Required)
14	10101936	3/8" Lock Washer - Zinc (Six Required)
15	1012318	3/8"-16 Hex Nut (Six Required)
16	10106309	10" Exhaust Silencer End
17	10106312	10" Silencer Support Strap (Two Required)
18	10106273	8" Jet Port Inlet Elbow
19	10106276	10" Exhaust Elbow
20	10106292	10" Discharge Silencer
21	10106291	8" Jet Port Silencer
22	10106508	Intake Filter Housing Cap
23	10104727	Air Filter Housing Gasket
24	10106279	Intake Filter Housing
25	20PFBA31095614	1/4" Tube x 1/4" NPT 90° (Two Required)
26	10106226	Electric Vacuum Skid Frame

Item #	Part #	Description
27	10104234	3/8-16 x 1-1/4" Hex Bolt Zinc (Two Required)
28	10106313	Silencer Support Angle
29	10106311	8" Silencer Strap (Two Required)
30	10104714	3/4-10 x 1-5/8" Grade 5 Zinc Bolt (20 Required)
31	10100596	3/4" Lock Washer (20 Required)
32	10100704	3/4" Flat Washer (20 Required)
33	10104715	7/8-9 x 2" Grade 5 Zinc Bolt (12 Required)
34	10104716	7/8" Flat Washer - Zinc (12 Required)
35	10104717	7/8" Lock Washer - Zinc (12 Required)
36	10104710	1/2-13 x 2" Grade 8 Bolt (Four Required)
37	10104711	1/2" Grade 8 Flat Washer (Eight Required)
38	10104712	1/2" Grade 8 Lock Washer (Four Required)
39	10106280	10" Discharge Elbow
40	10104456	616 Blower, Top Shaft Left Discharge
41	10106284	8" Inlet Elbow Weldment
42	10101941	1/2-10 Hex Nut
43	10100674	1/2" Flat Washer
44	10102005	Rubber Washer 1.25" O.D. x .375" I.D. x .13"
45	10102253	Filter Cartridge 12.75" x 8.38" x 36" - Flange - .54"
—	10106896	Blower Oil 100 For below 0° F
—	10106897	Blower Oil 150 For 0 – 32° F
—	10105254	Blower Oil 220 For 32 – 90° F
—	10106898	Blower Oil 320 For above 90° F

## PART NUMBERS AND SCHEMATICS

Figure 2: Front Assembly with with Sound Reduction Package



## PART NUMBERS AND SCHEMATICS

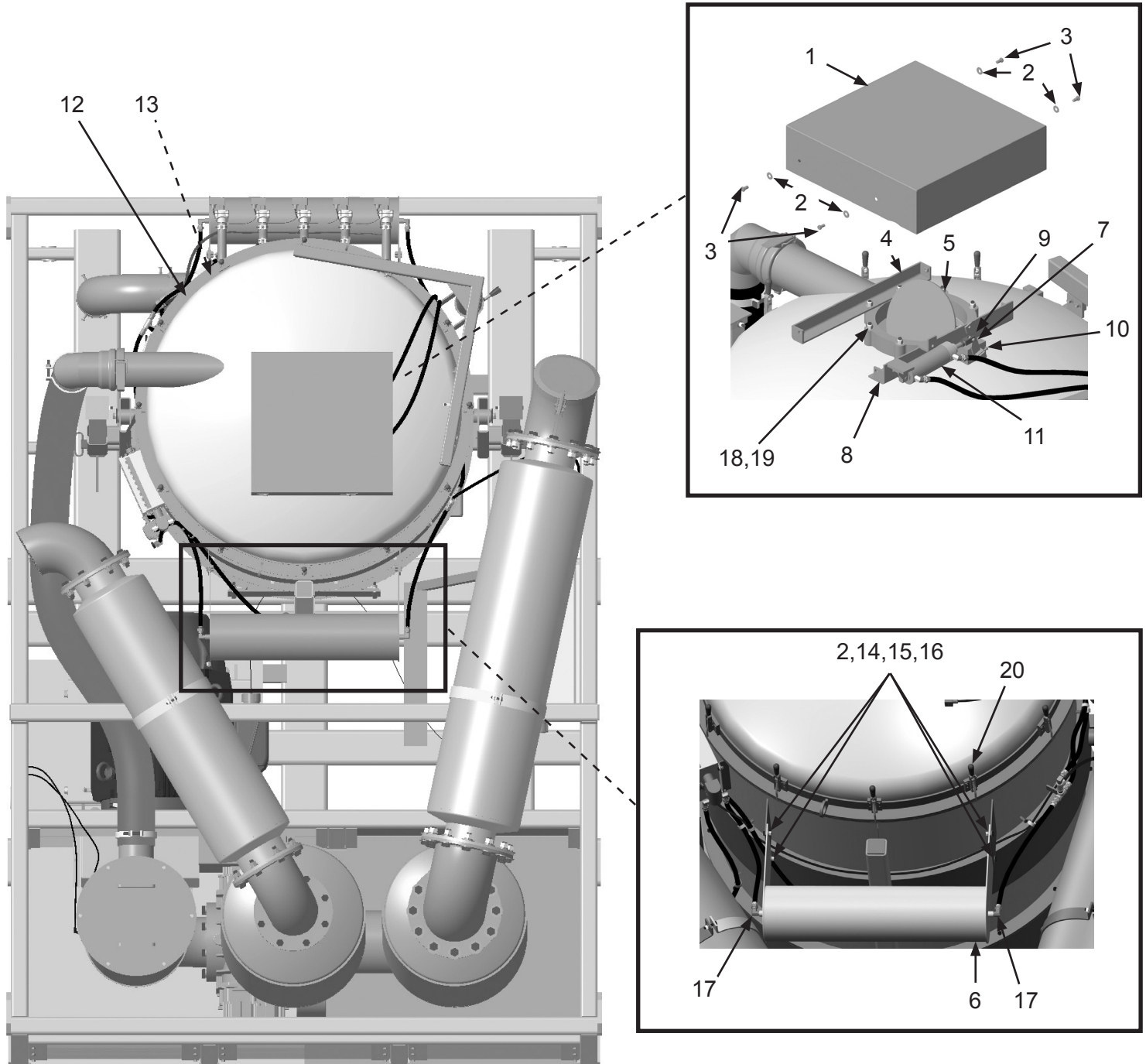
### Top Assembly

Item #	Part #	Description
<b>Fig. 3</b>		
1	10104559	Vacuum Butterfly Cover
2	10101942	3/8" Flat Washer - Galvanized <i>(13 Required)</i>
3	10103400	3/8-16 x 3/4" Bolt <i>(Four Required)</i>
4	10104554	Butterfly Cover Mount Weldment
5	10104537	12" Butterfly
6	10106288	Auxiliary Header
7	10104668	Piston Rod Clevis
8	10104538	Vacuum Butterfly Cylinder Weldment
9	10104543	Butterfly Actuating Arm
10	20100125	1/4-20 x 3/4" Zinc Hex Bolt
11	10104667	2.5" Pneumatic Cylinder
12	10104479	Vacuum Lid Weldment
13	10104426	Vacuum Hopper Section Gasket
14	1011747	3/8-16 x 1" Bolt <i>(Four Required)</i>
15	10101936	3/8" Lock Washer - Zinc <i>(Four Required)</i>
16	10101938	3/8-16 Hex nut <i>(Four Required)</i>
17	20PFHA60UA0606	3/8" (M) x 3/8" (F) 90° Swivel <i>(Two Required)</i>
18	10100674	1/2" Flat Washer <i>(Eight Required)</i>
19	20100124	1/2-13 Hex Lock Nut <i>(Eight Required)</i>
20	10104486	Over Center Clamp <i>(12 Required)</i>



## PART NUMBERS AND SCHEMATICS

Figure 3: Top Assembly



## PART NUMBERS AND SCHEMATICS

### Rear Assembly

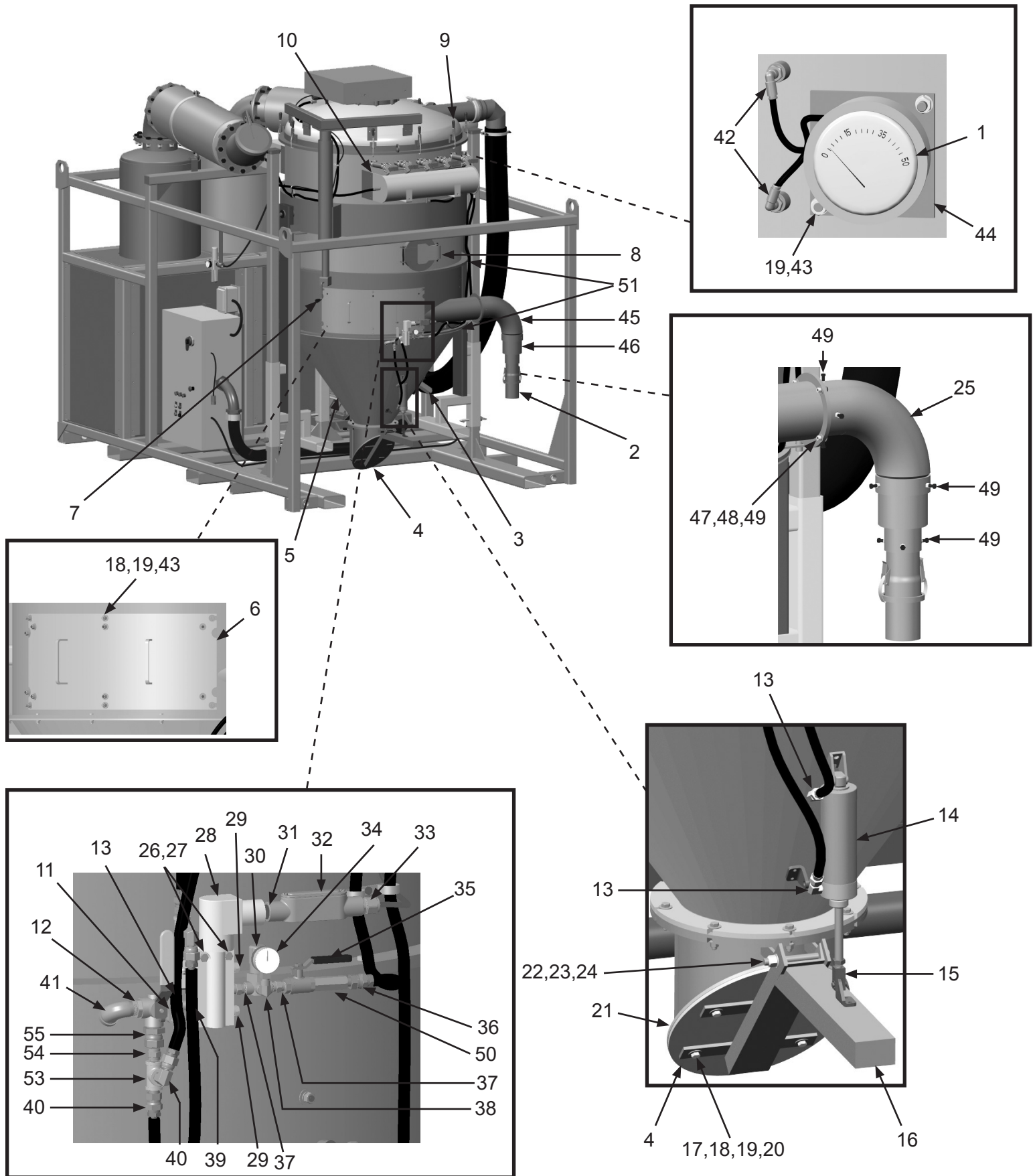
Item #	Part #	Description
<b>Fig. 4</b>		
1	10104673	0-50" Differential Pressure Gauge
2	10107797	4" Quick Disconnect Coupling
3	10104665	APV Series Piston Vibrator <i>(See figure 6)</i>
4	10104506	Dump Door
5	10104411	Vacuum Hopper Cone
6	10106511	Vacuum Wear Door
	10105190	Wear Door Only
	10105189	Wear Door Liner Only
7	10104638	Bulldog Trailer Jack
8	10104439	Hatch
9	10104486	Vacuum Lid Overcenter Clamp <i>(12 Required)</i>
10	10104498	Vacuum Header
11	1011818	1/2" x 1/4" Galvanized Bushing
12	20100571	1/2" NPT 3-Way Brass Ball Valve
13	20PFHA60UA0406	1/4" (M) x 3/8" (F) 90° Swivel <i>(Two Required)</i>
14	10104667	2.5" Pneumatic Cylinder
15	10104668	Piston Rod Clevis
16	10104507	Dump Arm
17	10104234	3/8-16 x 1-1/4" Hex Bolt Zinc <i>(Four Required)</i>
18	10101942	3/8" Flat Washer <i>(22 Required)</i>
19	10101936	3/8" Lock Washer - Zinc <i>(16 Required)</i>
20	1012318	3/8-16 Hex Nut <i>(Four Required)</i>
21	10104512	Dump Door Gasket
—	10104511	Dump Door Internal Plate
22	20100160	1/2-13 x 4-1/2" Hex Bolt
23	10100674	1/2" Flat Washer <i>(Two Required)</i>
24	20100124	1/2-13 Hex Lock Nut
25	10108921	Inlet Elbow Weldment
26	1019044	1/4-20 x 1-3/4" Zinc Bolt <i>(Two Required)</i>

Item #	Part #	Description
27	1012323	1/4-20 Zinc Lock Nut with Nylon Insert <i>(Two Required)</i>
28	10104670	Solenoid
29	1019024	Breather Vent
30	10104676	Series MPR Mini Pressure Regulator
31	10L803035	1/2" Close Nipple
32	1019025	1/2" Straight Conduit Body
33	10104703	Cord Grip, 1/2" Nylon .2-.47 Diameter
34	10104678	1/8" Pressure Gauge 100 PSI
35	1080050	1/4" Ball Valve
36	20PFHA60SG0406	1/4" (F) x 3/8" (F) Swivel Union <i>(Two Required)</i>
37	20PFHA24SA0404	1/4" Hex Nipple <i>(Three Required)</i>
38	1014239	1/8" x 1/8" 90° Fitting
39	1011210	1/4" NPT x 1 1/2" Nipple
40	20PFHA60SA0806	1/2" (M) x 3/8" (F) Swivel Union
41	1011819	1/2" Street Elbow
42	20PFBA31095614	1/4" Tube x 1/4" NPT 90°
43	10101938	3/8-16 Hex Nut <i>(14 Required)</i>
44	10103608	Magnehelic Mount
45	10104546	Inlet Elbow Weldment
46	10104550	Inlet Adapter Weldment
47	10101942	3/8" Flat Washer - Galvanized <i>(Eight Required)</i>
48	10101938	3/8 -16 Hex Nut Galvanized <i>(Four Required)</i>
49	1011747	3/8-16 x 1" Bolt - Zinc <i>(13 Required)</i>
50	10109020	1/4" NPT Inline Air Filter
51	10104426	Vacuum Hopper Section Gasket



# PART NUMBERS AND SCHEMATICS

Figure 4: Rear Assembly



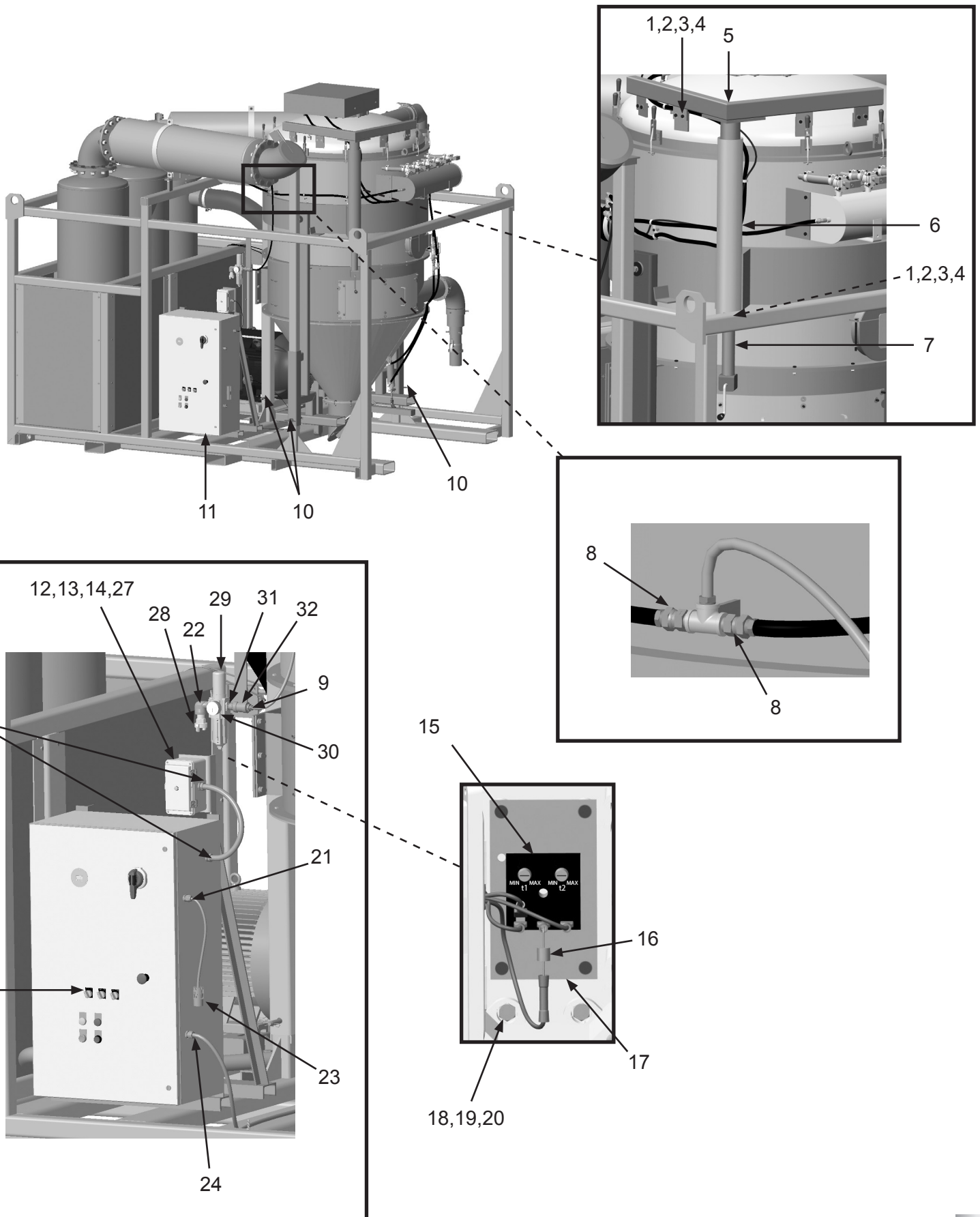
## PART NUMBERS AND SCHEMATICS

### Left Side Assembly

Item #	Part #	Description
<b>Fig. 5</b>		
1	10104234	3/8-16 x 1-1/4" Hex Bolt Zinc <i>(Eight Required)</i>
2	10101942	3/8" Flat Washer - Galvanized <i>(40 Required)</i>
3	10101936	3/8" Lock Washer - Zinc <i>(11 Required)</i>
4	1012318	3/8-16 Hex Nut <i>(11 Required)</i>
5	10104472	Vacuum Lid Lift
6	10104434	Vacuum Top Section
7	10104638	Bulldog Trailer Jack
8	20PFHA60SA0606	Union Swivel 3/8" (M) x 3/8" (F) <i>(Two Required)</i>
9	20PFHA24SB1206	3/4" x 3/8" Reducing Bushing
10	10103788	Hitch Pin - 3/4" x 6 1/2" Long
11	10106295	Vacuum Control Panel
12	1012154	1/4-20 x 1 Hex Bolt
13	10101940	1/4" Flat Washer - Galvanized
14	10101939	1/4-20 Stainless Steel Lock Nut With Nylon Insert
15	10106818	Vacuum Control Timer
16	10104109	6 Amp 50-Volt Rectifier
17	10105193	Enclosure Panel
18	20100125	1/4-20 x 3/4" Zinc Hex Bolt <i>(Eight Required)</i>
19	10101940	1/4" Flat Washer - Galvanized <i>(Four Required)</i>
20	10101939	1/4-20 Stainless Steel Lock Nut with Nylon Insert <i>(Four Required)</i>
21	10104703	Cord Grip Nylon 1/2"-NPT .2-.47 Diameter
22	10102479	3/4" 90 Degree Street Elbow
23	1015556	Female Twist Plug 3 Prong
24	20RCG5050	Cord Grip, 1/2"-NPT .5-.625 Diameter
25	10103305	Selector Switch - 2-Way <i>(Three Required)</i>
26	20RST50	Straight Liquid Tite Connector Fitting
27	10104615	8" x 4" x 5" Fiberglass Latch Enclosure
28	10ME1	X Coupling 2-Lug Male 3/4"
29	10103257	74 Series Filter / Regulator
30	1028606	1/4" Pressure Gauge 160 PSI
31	10103317	3/4" x 2" Nipple
32	10106366	3/4" NPT Coupling

# PART NUMBERS AND SCHEMATICS

Figure 5: Left Side Assembly



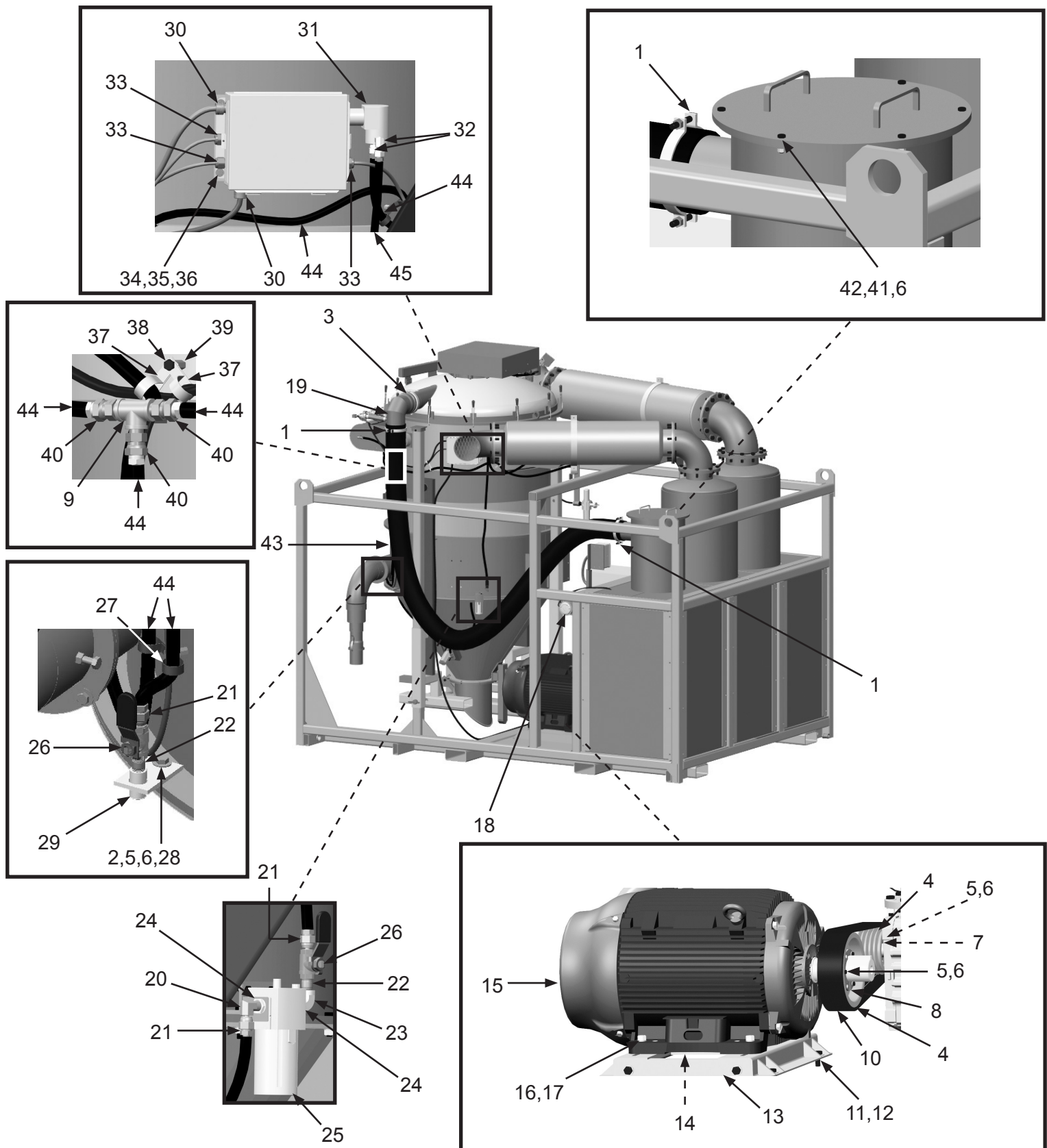
## PART NUMBERS AND SCHEMATICS

### Right Side Assembly

Item #	Part #	Description	Item #	Part #	Description
<b>Fig. 6</b>			26	1080060	3/8" NPT Full Port Brass Ball Valve (Two Required)
1	10104640	6" Double Bolt Clamp (Two Required)	27	10103624	1" Rubber Cushioned Loop Clamp
2	10101942	3/8" Flat Washer (Five Required)	28	1012318	3/8-16 Hex Nut
3	10104637	6" Bandlock Clamp	29	10104597	Airline Drain
4	10106340	5/5V 7.10" Sheave (Two Required)	30	20RCG5050	1/2" NPT x .5—.625 Diameter Cord Grip (Two Required)
5	1028617	3/8-16 x 1-3/4" Shoulder Bolt (Seven Required)	31	10104671	Vibrator Solenoid
6	10101936	3/8" Lock Washer - Zinc (Seven Required)	32	20PFHA60UA0406	1/4" (M) x 3/8" (F) 90° Swivel (Two Required)
7	10106342	Bushing 2" Bore	33	10104703	1/2" NPT x .2—.47 Diameter Nylon Cord Grip (Three Required)
8	10106107	Bushing 2-7/8" Bore	34	10101939	1/4-20 Stainless Steel Lock Nut with Nylon Insert (Four Required)
9	1011809	3/8" NPT Tee	35	10101940	1/4" Flat Washer - Galvanized (Four Required)
10	10106339	5 Strand 5VP600 Belt - 60"	36	20100125	1/4-20 x 3/4" Zinc Hex Bolt (Four Required)
11	10103417	3/4-10 UNC x 1-3/4" Bolt (Four Required)	37	10103624	1" Rubber Cushioned Loop Clamp (10 Required)
12	10103418	Washer - 3/4" (Four Required)	38	10L805302	Jr & Sr Spindle Bolt (10 Required)
13	10106256	HP Motor Base	39	10102387	1/4-28 Coupling Nut (10 Required)
14	10106129	3" Straight Conduit Hub	40	20PFHA60SA0606	Union Swivel 3/8" (M) x 3/8" (F) (Three Required)
15	10106015	150 HP 3 Phase Electric Motor	41	10104234	3/8-16 X 1-1/4 Hex Bolt Zinc Gr 5
16	10103420	3/4-10 UNC Nut (Four Required)	42	10101938	3/8"-16 Hex Nut Galvanized
17	10103419	3/4" Lock Washer (Four Required)	43	10VH620B	Ureflex 1 6" ID Vac Hose 20' Section
18	10109021	0-80" Differential Pressure Gauge	44	10AH038	Air Hose 3/8" Is 300 PSI
19	10104636	6" 90° Elbow Non-Plated			
20	20PFHA60UA0606	3/8" (M) x 3/8" (F) 90° Swivel Union			
21	20PFHA60SA0606	Union Swivel 3/8" (M) x 3/8" (F) (Three Required)			
22	1011209	3/8 NPT Close Nipple			
23	20PFHA25UG0606	3/8" Street Elbow			
24	20PFHA24SB0806	1/2" x 3/8" Reducing Bushing (Two Required)			
25	10104674	Lubricator, 1/2" NPT 156 CFM			

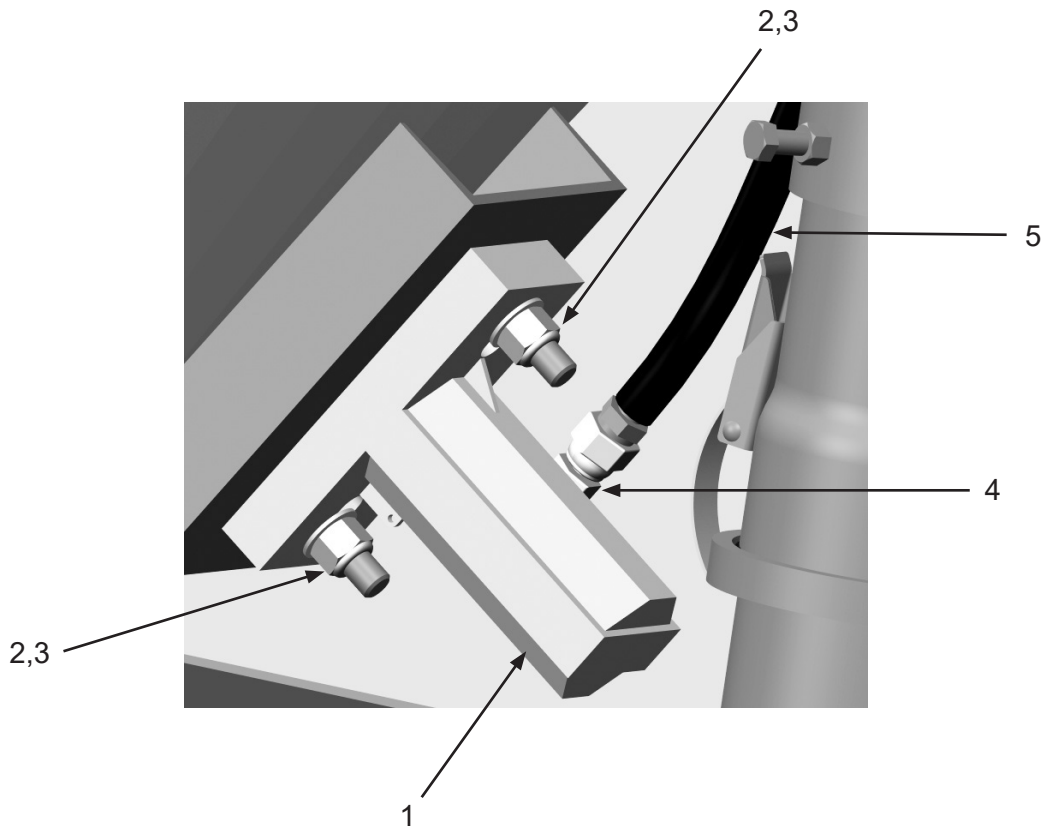
## PART NUMBERS AND SCHEMATICS

Figure 6: Right Side Assembly



## PART NUMBERS AND SCHEMATICS

Figure 7: Pneumatic Piston Vibrators



Item #	Part #	Description
--------	--------	-------------

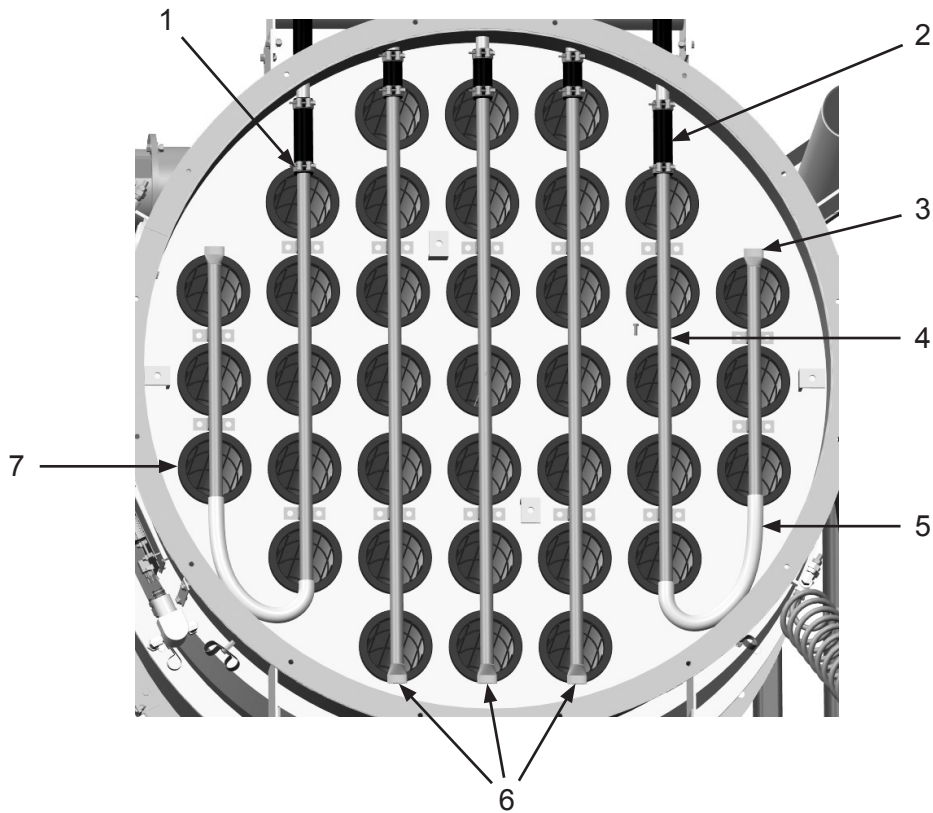
Fig. 7

1	10104665	APV Series Piston Vibrator
2	20100124	1/2-13 Hex Lock Nut - Zinc <i>(Two Required)</i>
3	10100674	1/2" Flat Washer <i>(Two Required)</i>
4	20PFHA60UA0406	1/4" (M) x 3/8" (F) 90° Swivel Union
5	10AH038	Air Hose 3/8" Is 300 PSI



## PART NUMBERS AND SCHEMATICS

Figure 8: Filter Bag Pulsers



Item #	Part #	Description
--------	--------	-------------

Fig. 8

1	10103736	T-Bolt Hose Clamp For 1" I.D. (10 Required)
2	10106509	1" 75W Marine Hose - 100 PSI (Five Required)
3	10104562	Pulser System Short Blowpipe (Two Required)
4	10104565	Pulser System Medium Blowpipe (Two Required)
5	10104680	1" Flexible Tubing For Blowpipes (Two Required)
6	10104567	Pulser System Long Blowpipe (Three Required)
7	10104633	Vacuum Baghouse Filter (37 Required)
—	10104634	Vacuum Baghouse Filter Cage (37 Required)

## PART NUMBERS AND SCHEMATICS

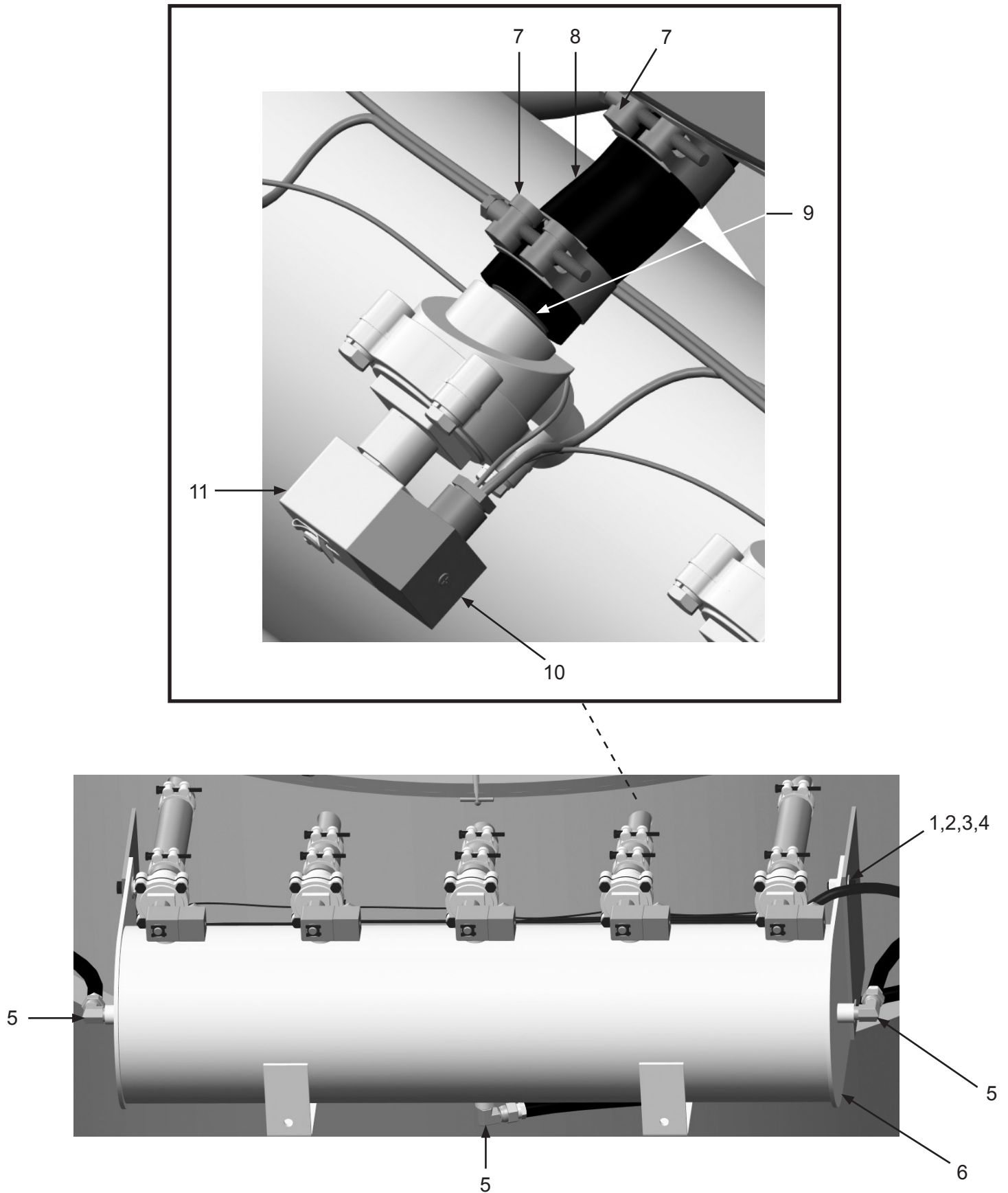
### Pulser System Assembly

Item #	Part #	Description
<b>Fig. 9</b>		
1	10101942	3/8" Flat Washer - Galvanized <i>(Eight Required)</i>
2	10101936	3/8" Lock Washer - Zinc <i>(Four Required)</i>
3	1011747	3/8-16 x 1" Bolt <i>(Four Required)</i>
4	10101938	3/8-16 Hex Nut <i>(Four Required)</i>
5	20PFHA60UA0606	3/8" (M) x 3/8" (F) 90° Swivel Union
6	10104498	Vacuum Header
7	10103736	T-Bolt Hose Clamp For 1" I.D. <i>(10 Required)</i>
8	10106509	Air Hose 1" I.D. 200 PSI - Red
9	10104500	3/4" NPT x 1-1/2" Toe Nipple <i>(Five Required)</i>
10	10105287	Din Connector <i>(Included with Item #11) (Five Required)</i>
11	10104666	3/4" Diaphragm Valve with Solenoid <i>(Five Required)</i>
—	10107192	Pilot Valve Repair Kit
—	10107193	Diaphragm Repair Kit



## PART NUMBERS AND SCHEMATICS

Figure 9: Pulser System Assembly



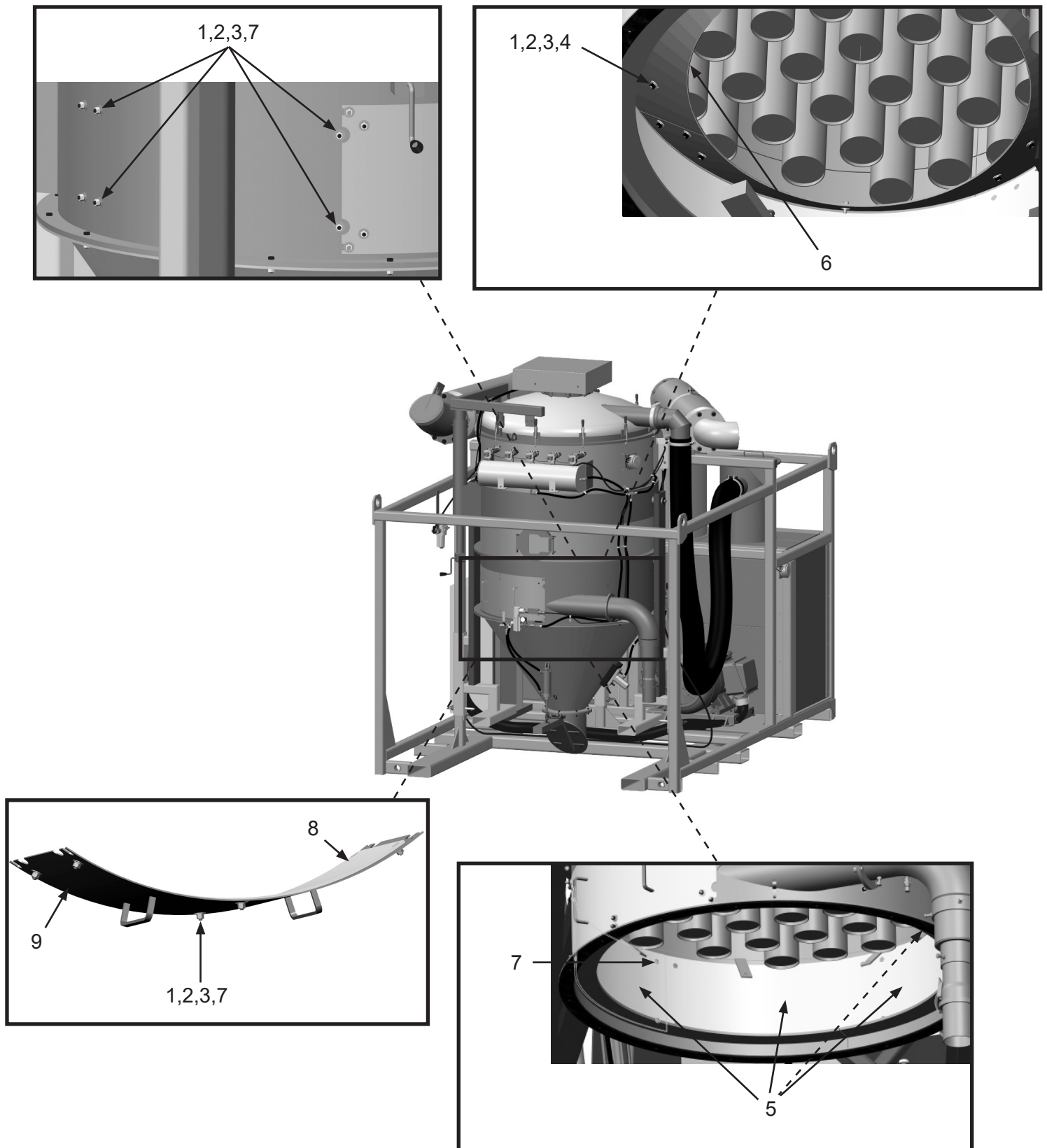
## PART NUMBERS AND SCHEMATICS

### Wear Plates and Baffles

Item #	Part #	Description
<b>Fig. 10</b>		
1	10101942	3/8" Flat Washer - Galvanized <i>(22 Required)</i>
2	10101936	3/8" Lock Washer - Zinc <i>(22 Required)</i>
3	10101938	3/8-16 Hex Nut <i>(22 Required)</i>
4	1011747	3/8-16 x 1" Bolt <i>(22 Required)</i>
5	10104489	Vacuum Wear Plates <i>(Four Required)</i>
6	10104490	Vacuum Baffle <i>(Three Required)</i>
7	10104705	3/8-16 x 1" Bolt Zinc <i>(22 Required)</i>
8	10105189	Wear Door Liner
9	10105190	Wear Door

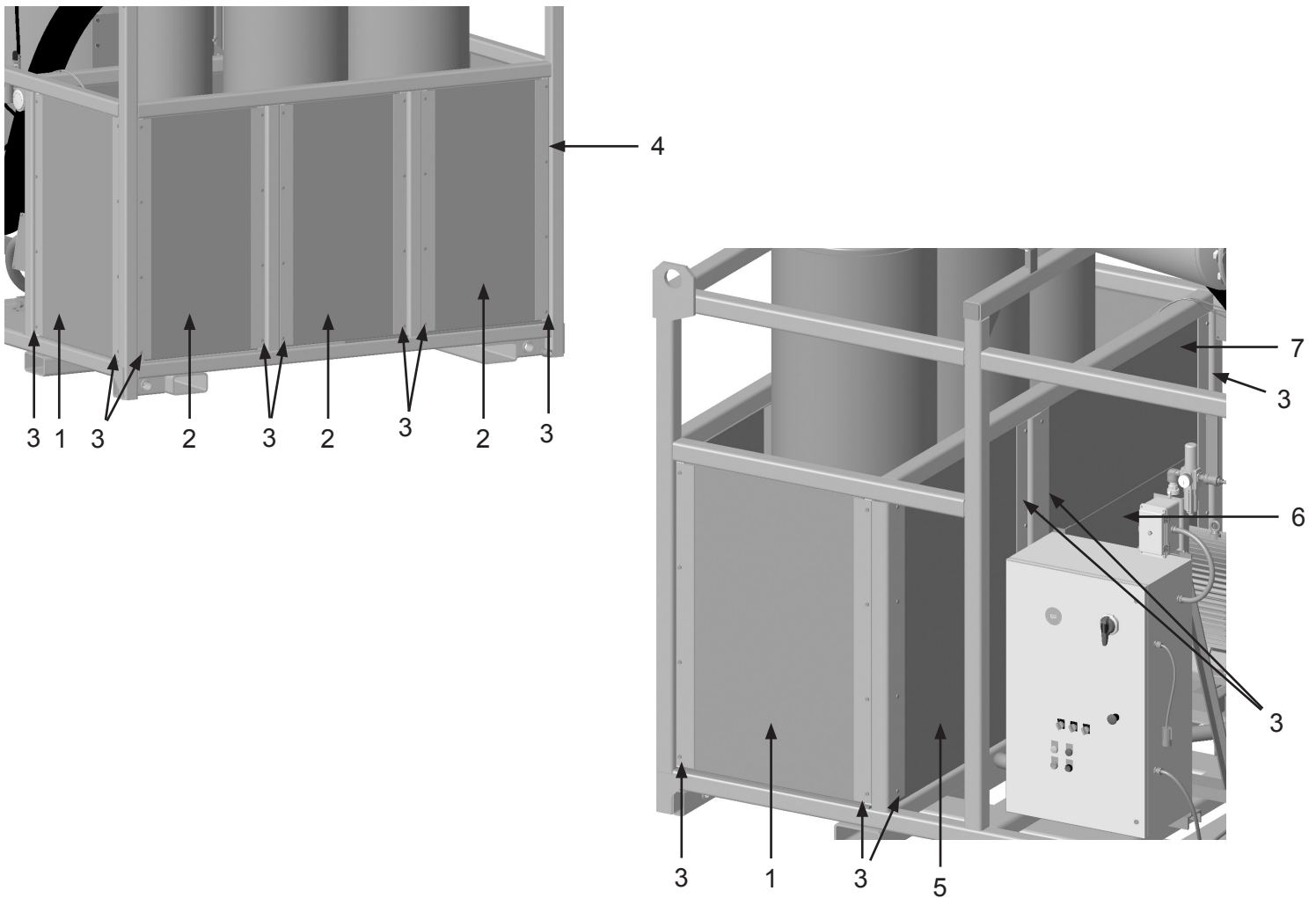
## PART NUMBERS AND SCHEMATICS

Figure 10: Wear Plates and Baffles



## PART NUMBERS AND SCHEMATICS

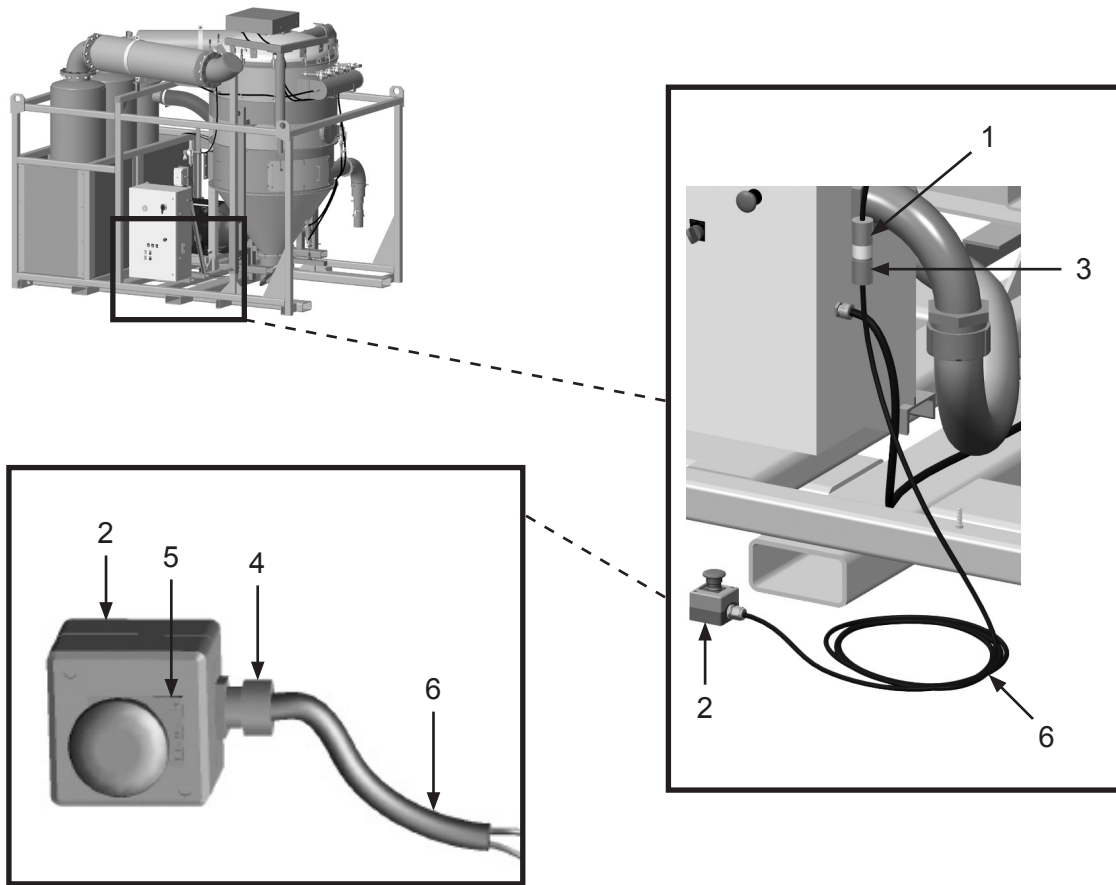
Figure 11: Sound Panels and Straps



Item #	Part #	Description
<b>Fig. 11</b>		
1	10106301	Sound Panel <i>(Two Required)</i>
2	10106300	Sound Panel <i>(Three Required)</i>
3	10106305	Panel Hold On's <i>(Four Required)</i>
4	10103400	3/8-16 x 3/4" Bolt <i>(72 Required)</i>
5	10106302	Sound Panel 3
6	10106303	Sound Panel 4
7	10106304	Sound Panel 5

## PART NUMBERS AND SCHEMATICS

Figure 12: Emergency-Stop Station



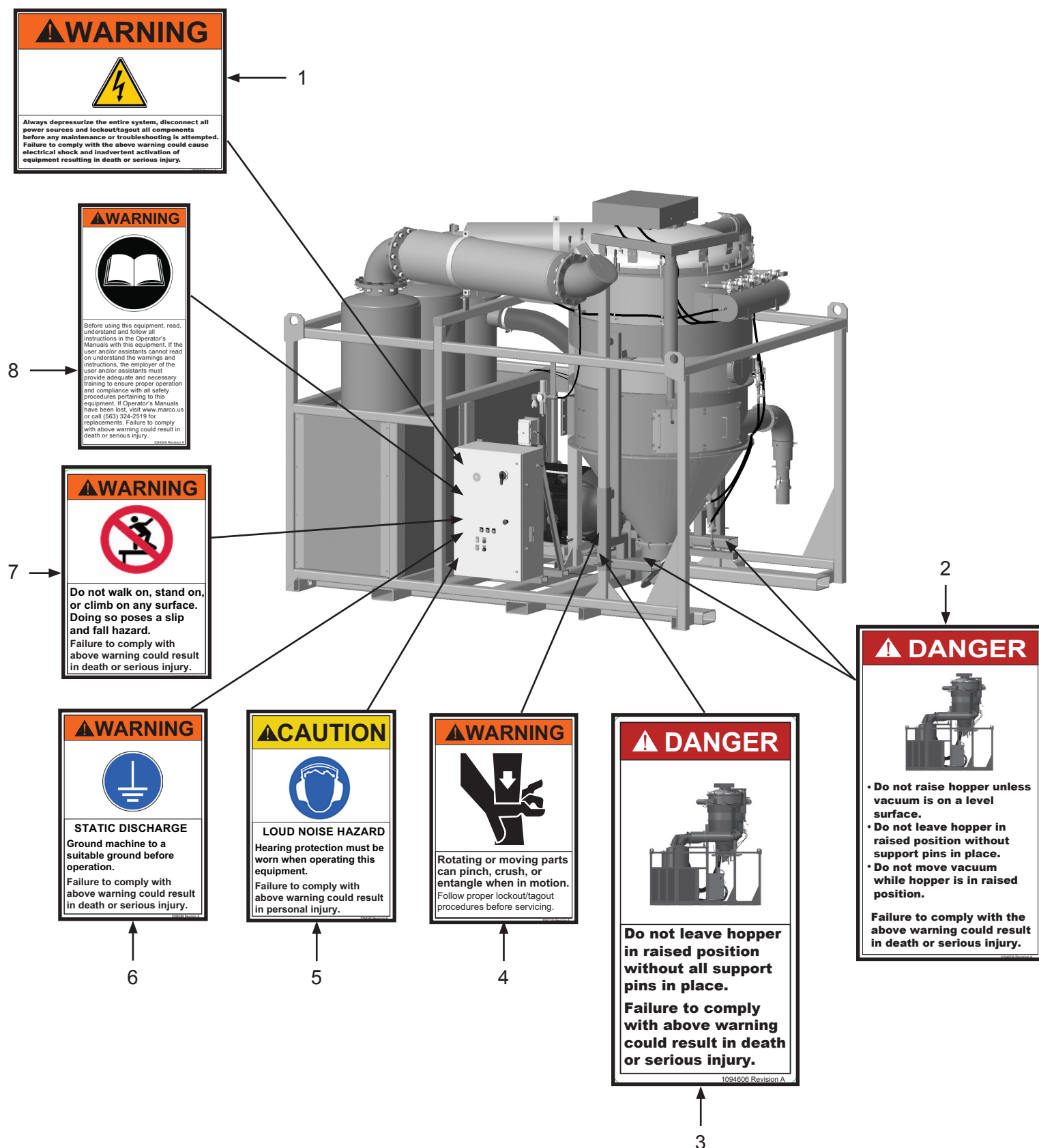
Item #	Part #	Description
--------	--------	-------------

Fig. 12

—	<b>10107200</b>	<b>Remote Emergency-Stop Station</b> (Includes Item #'s: 2, 4, 5, and 6 (100'))
1	1015556	Female Twist Lock Plug Three Prong
2	10104071	E-Stop Control Station
3	1015556	Male Twist Lock Plug Three Prong
4	10104703	Cord Grip, Nylon 1/2"-NPT .2-.47 Diameter
5	10104063	Legend Plate - Emergency Stop
6	1015540	16/2 Xtreme Duty Power Cord - Red
—	1015009	8-32 x 1" Pan Head Phillips Screw (Four Required)
—	20000021	8-32 Zinc Nut (Four Required)
—	20000018	#8 Zinc Lock Washer (Four Required)
—	20000019	#8 Zinc Flat Washer (Four Required)

# PART NUMBERS AND SCHEMATICS

Figure 13: Hazard Identification Decals (cont.)



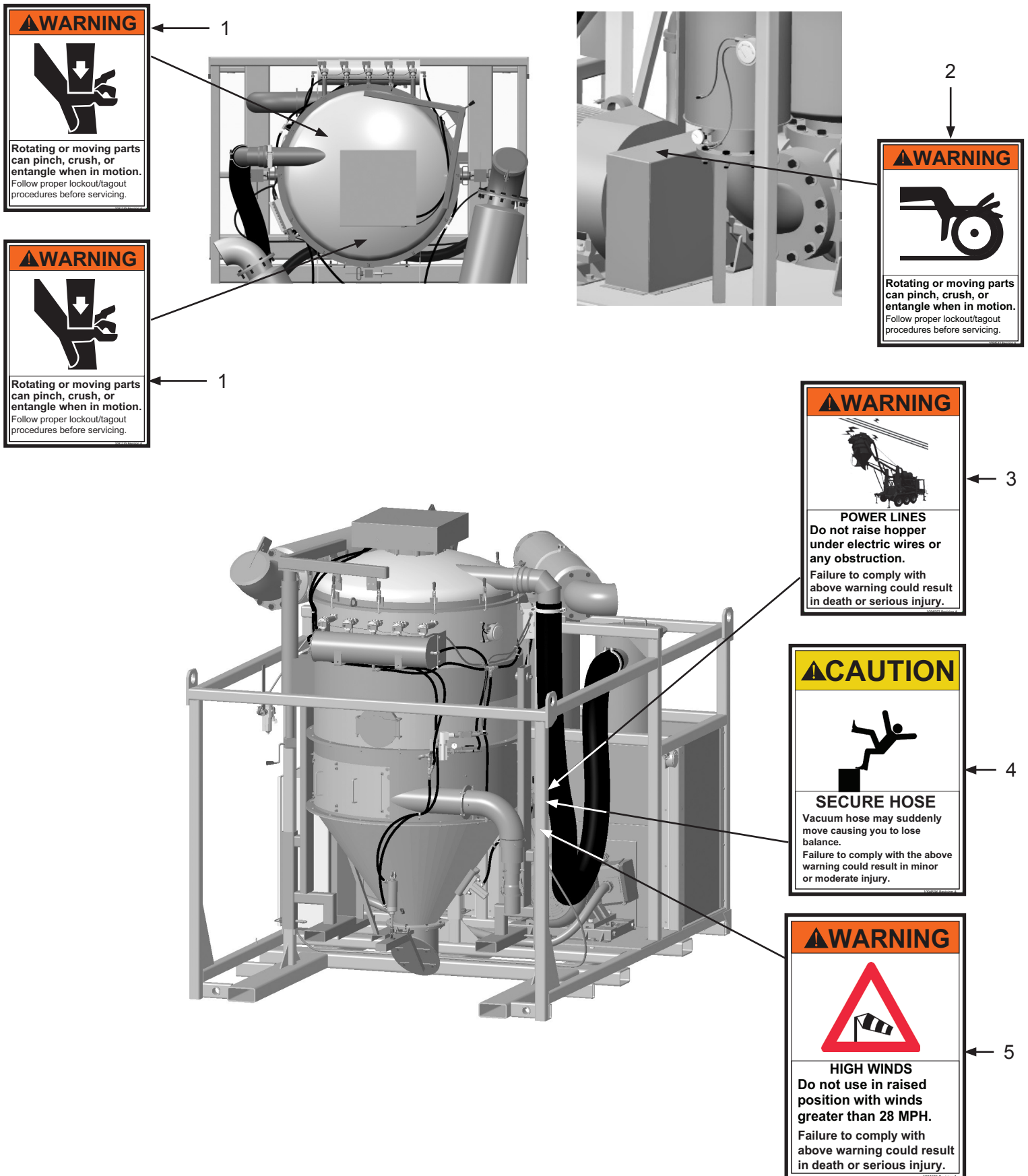
## PART NUMBERS AND SCHEMATICS

**Figure 13: Hazard Identification Decals (Cont.)**

Item #	Part #	Description
<b>Fig. 13</b>		
1	1094556	Lockout/Tagout Warning Decal
2	1094608	Hopper Danger Decal
3	1094606	Hopper Position Danger Decal
4	1091135	Rotating or Moving Parts Warning Decal
5	1094590	Loud Noise Hazard Warning Decal
6	1094589	Static Discharge Warning Decal
7	1094591	Do Not Climb On Warning Decal
8	1094546	Read Manual Warning Decal

## PART NUMBERS AND SCHEMATICS

Figure 14: Hazard Identification Decals (cont.)





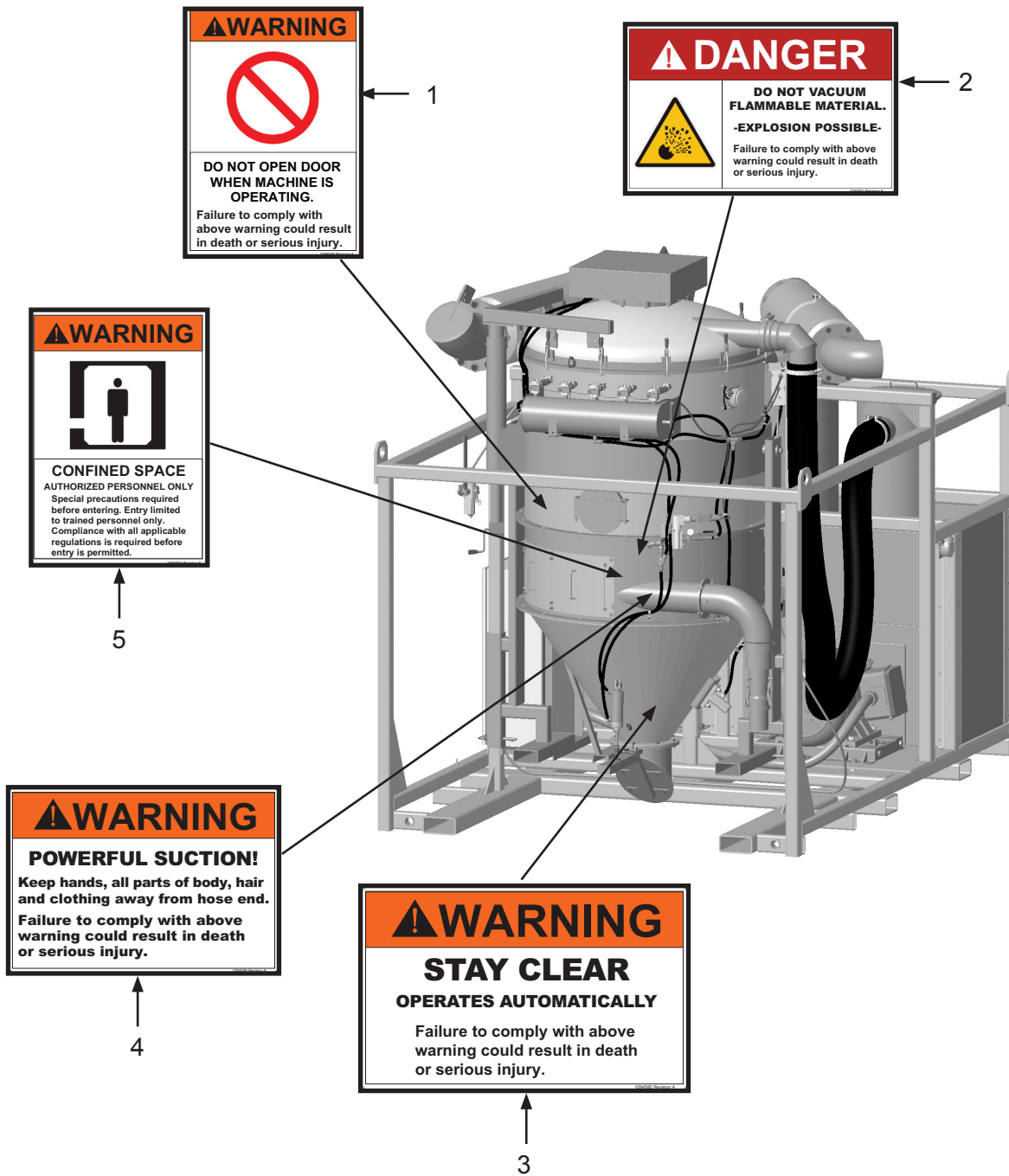
## PART NUMBERS AND SCHEMATICS

**Figure 14: Hazard Identification Decals (Cont.)**

Item #	Part #	Description
<b>Fig. 14</b>		
1	1091135	Rotating or Moving Parts Warning Decal
2	1094543	Rotating or Moving Parts Warning Decal
3	1094592	Power Line Warning Decal
4	1094596	Secure Hose Caution Decal
5	1094595	High WindsWarning Decal

## PART NUMBERS AND SCHEMATICS

Figure 15: Hazard Identification Decals



Item #	Part #	Description
<b>Fig. 15</b>		
1	1094594	Do Not Open Door Warning Decal
2	1094581	No Not Vacuum Flammable Material Danger Decal
3	1094580	Stay Clear Warning Decal
4	1094586	Powerful Suction Warning Decal
5	1091054	Confined Space Warning Decal




## OPTIONAL ACCESSORIES








### VACUUM HOSE

Part Numbers	Vacuum Hose I.D.	Length	Vacuum HG	Cover Material	Reinforcement Material	Liner	Hose Color
10VH11250	1-1/2"	50 Ft.	29"	Pliovic®	Pliovic® PVC Helix	Polyurethane	Black
10VH225	2"	25 Ft.	29"	Pliovic®	Pliovic® PVC Helix	Polyurethane	Blue
10VH250	2"	50 Ft.	29"	Pliovic®	Pliovic® PVC Helix	Polyurethane	Blue
10VH200	2"	100 Ft.	29"	Pliovic®	Pliovic® PVC Helix	Polyurethane	Blue
10VH2550	2-1/2"	50 Ft.	29"	Pliovic®	Pliovic® PVC Helix	Polyurethane	Blue
10VH325	3"	25 Ft.	29"	Pliovic®	Pliovic® PVC Helix	Polyurethane	Blue
10VH350	3"	50 Ft.	29"	Pliovic®	Pliovic® PVC Helix	Polyurethane	Blue
10VH300	3"	100 Ft.	29"	Pliovic®	Pliovic® PVC Helix	Polyurethane	Blue
10VH425	4"	25 Ft.	29"	Pliovic®	Pliovic® PVC Helix	Polyurethane	Blue
10VH450	4"	50 Ft.	29"	Pliovic®	Pliovic® PVC Helix	Polyurethane	Blue
10VH400	4"	100 Ft.	29"	Pliovic®	Pliovic® PVC Helix	Polyurethane	Blue
10VH525	5"	25 Ft.	29"	Pliovic®	Pliovic® PVC Helix	Polyurethane	Blue
10VH550	5"	50 Ft.	29"	Pliovic®	Pliovic® PVC Helix	Polyurethane	Blue
10VH500	5"	100 Ft.	29"	Pliovic®	Pliovic® PVC Helix	Polyurethane	Blue
10VH625	6"	25 Ft.	25"	Pliovic®	Pliovic® PVC Helix	Polyurethane	Blue
10VH650	6"	50 Ft.	25"	Pliovic®	Pliovic® PVC Helix	Polyurethane	Blue
10VH600	6"	100 Ft.	25"	Pliovic®	Pliovic® PVC Helix	Polyurethane	Blue
10VH825	8"	25 Ft.	25"	Pliovic®	Pliovic® PVC Helix	Polyurethane	Blue
10VH850	8"	50 Ft.	25"	Pliovic®	Pliovic® PVC Helix	Polyurethane	Blue


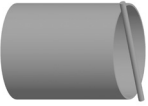
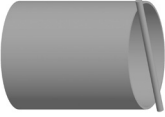
## OPTIONAL ACCESSORIES

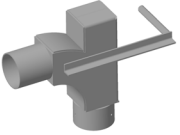
	Part Numbers	VACUUM HOSE REDUCERS
		Size
	10106712	8" x 4"
	10106716	6" x 4"
	10106872	6" x 5"

	Part Numbers	WYE ADAPTERS
		Size
	10106719	4" x 2" x 2"
	10107485	6" x 2" x 2"
	10106723	6" x 4" x 4"
	10106727	8" x 4" x 4"

	Part Numbers	VACUUM HOSE MENDERS			
		Vacuum Hose I.D.	Mender Length	Thickness	Material
	10HM2	2"	8"	1/8"	Steel
	10HM3	3"	9"	1/8"	Steel
	10HM4	4"	10"	1/8"	Steel
	10HM5	5"	11"	1/8"	Steel
	10HM6	6"	12"	1/8"	Steel
	10HM8	8"	14"	1/8"	Steel

## OPTIONAL ACCESSORIES

	Part Numbers	VACUUM HOSE INSERTS
		Size
	10104831	4"
	10104828	5"
	10104825	6"

	Part Numbers	HOSE INLET ELBOW
		Description
	10106732	Heavy-Duty Hose Elbow <i>(Optional)</i>

## LITERATURE REFERENCES

### Vacmaster® 15T Electric Abrasive Vacuums

106M156	Part Numbers & Schematics Guide – Vacmaster® 15T Electric Abrasive Vacuums
1090156	Operator's Manual – Vacmaster® 15T Electric Abrasive Vacuums
109V521	Operator's Manual - Blower
109V563	Operator's Manual – WEG Electric Motor Manual

## MAINTENANCE NOTES

[illegible]

## MAINTENANCE NOTES

[illegible]



## ALLREDI THERE

Serving these industries: Bridge, Pipeline, Tank & Tower, Concrete Services, Rail, Shipyard & Marine, Pools & Fountains, and Foundry

### UNITED STATES

**Pasadena, TX (Headquarters)**  
844.361.7038

**Beaumont, TX**  
409.722.1284

**Bristol, PA**  
215.826.8080

**Corpus Christi, TX**  
361.887.2038

**Davenport, IA**  
563.324.2519

**Deer Park, TX**  
(Service & Rental Location)  
281.930.0905

**Duluth, GA**  
800.535.4564

**Gonzales, LA**  
225.647.7575

**Harvey, LA**  
504.367.8090

**Houma, LA**  
985.580.4273

**Lafayette, LA**  
337.267.1440

**Theodore, AL**  
251.338.7525

### CANADA

**Calgary, Alberta**  
403.279.1924

**Coquitlam, BC**  
604.464.6979

**Edmonton, Alberta**  
780.468.2588 (Manus)  
780.425.5510 (Mod-U-Blast)

**Hamilton, Ontario**  
905.527.6000 / 888.794.5665

**Mississauga, Ontario**  
905.890.5837

**Winnipeg, Manitoba**  
204.256.3324

**WWW.ALLREDI-US.COM / 800.252.7848**

**WWW.ALLREDI-CA.COM / 800.661.3842**

Allredi™ and Marco® are registered trademarks of Allredi, LLC.  
Mod-U-Blast® is a registered trademark of Allredi Blast & Abrasives Canada, Inc.  
All other brand names or marks are used for identification purposes and are trademarks of their respective owners.

**ALLREDI™**

Literature #106M156\_5/30/2024