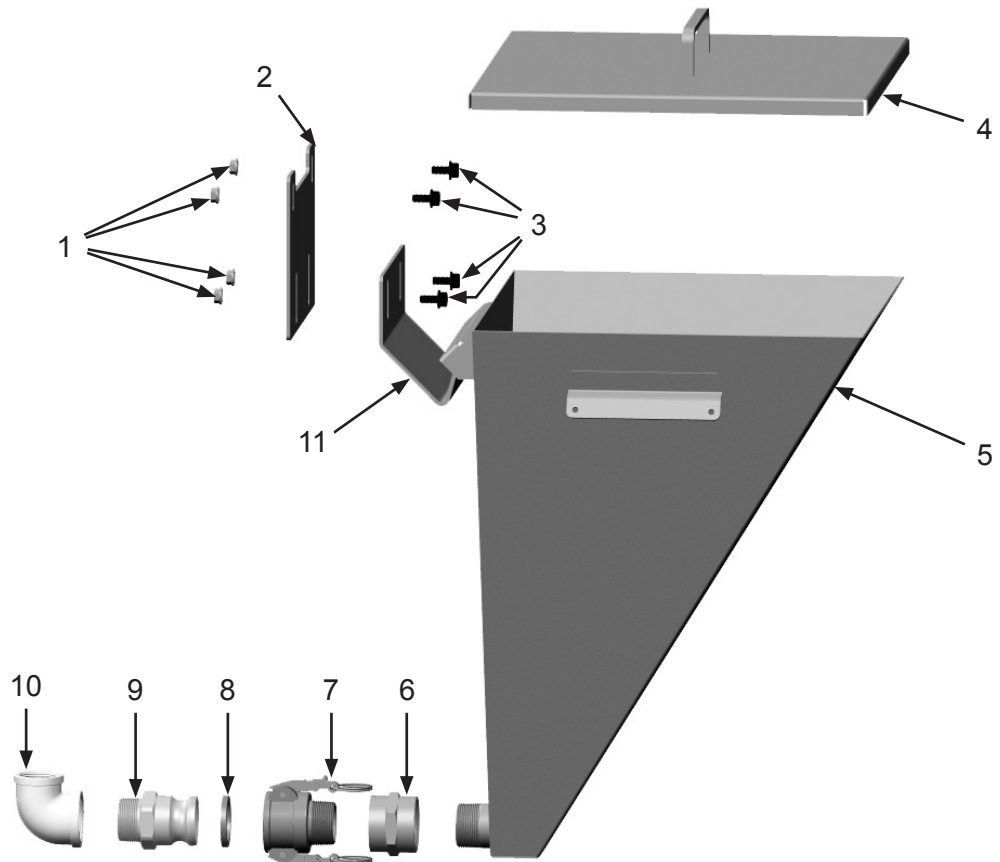


SPRAYMASTER® 10 GALLON PUMP HOPPER

WARNING

W-505
 Inspect all equipment for wear or damage before and after each use. Failure to use Original Equipment Manufacturer repair parts and failure to immediately replace worn or damaged components could void warranties and cause malfunctions. Failure to comply with the above warning could result in death or serious injury.

Note: Refer to original pump manufacturers installation instructions.



Item #	Part #	Description
--------	--------	-------------

Fig. 2

1	20101259	3/8- 16 Serrated Flange Nut – Zinc
2	20101245	10 Gallon Hopper Mounting Bracket
3	20101258	3/8-16 x 3/4" Serrated Screw
4	20100614	Lid Weldment
5	20101240	10 Gallon Hopper Weldment
6	20101260	1-1/2" Hex Coupling
7	20101256	1-1/2" Al Cam & Groove Socket
8	20101261	1-1/2" Cam Socket Gasket
9	20101257	1-1/2" Al Cam & Groove Plug
10	20101255	1-1/2" x 1-1/4" 90° Elbow
11	20101243	10 Gallon Hopper Hanger Bracket

