



PRODUCT CATALOG EDITION 5.1



OUR STORY

We've grown far beyond what started in the 1970's as a task force to revolutionize protective equipment. Today, we protect you for life's best moments.

Our disruptive innovation paired with our inherited knowledge of heavy industries has transformed the quality of lives and businesses. Our charitable initiatives raise over \$150,000 annually to help ensure no family is left behind. The Green Forces is now the fastest-growing elite industrial community in the world.

Enter the RPB® armory, the world's most advanced front-line armor for industry professionals consisting of supplied and powered air respirators, air monitoring, filtration and safety essentials, designed to advance your safety and increase your productivity.

As we embark on a new frontier in industry, join us in helping build a better future for the new generation of elite operators and enterprises.



GLOBAL NETWORK

RPB® has a global network of distributors serviced from our Michigan Head Office and satellite offices in New Zealand and the United Kingdom.

Contact us on **(866) 494-4599 (USA)**, **+1 (248) 591 4000 (International)** or visit [rpbsafety.com/find-your-distributor/](https://www.rpbsafety.com/find-your-distributor/) to find your nearest distributor.

Copyright ©2019 RPB Safety, LLC. All rights reserved.

All materials contained in this publication are protected by United States copyright law and may not be reproduced, distributed, transmitted, displayed, published or broadcast without the prior written permission of RPB Safety, LLC. You may not alter or remove any trademark, copyright or other notice from copies of the content.

All trademarks, service marks, and logos used in this publication, both registered and unregistered, are the trademarks, service marks, or logos of their respective owners. The green and gray color combination is a registered trademark of RPB Safety, LLC. All rights in the RPB Intellectual Property contained in this publication, including copyright, trademarks, service marks, trade secret, and patent rights are reserved. RPB Intellectual Property means any patent, patented articles, patent applications, designs, industrial designs, copyrights, software, source code, database rights, moral rights, inventions, techniques, technical data, trade secrets, know-how, brands, trademarks, trade names, slogans, logos, and any other common law and proprietary rights, whether registered or unregistered anywhere in the world, that are owned by, developed in whole or in part by, or licensed by RPB Safety, LLC.

Tychem® and Nomex® are registered trademarks of E.I. du Pont de Nemours and Company or its affiliates.

While the Information contained within this catalog is considered to be true and correct at the date of publication, changes in circumstances after the time of publication may impact on the accuracy of the Information. The Information may change without notice and RPB Safety LLC is not in any way liable for the accuracy of any information printed and stored or in any way interpreted and used by a user.



CONTENTS



RESPIRATORS

- 6 Z-Link®
- 24 Link Accessories
- 32 Z4®
- 44 Z3™ Welder
- 54 Z100™ Series
- 62 Nova 3®
- 74 Nova 3® Talk™
- 80 L4™ Light
- 88 Nova 2000®
- 98 Nova 2000® Talk™
- 104 Nova 1®
- 116 Nova 1® Talk™
- 122 Astro™
- 132 T-Link®
- 144 T100™ Series
- 152 T150™ Series

AIR MONITORING FILTRATION AND SUPPLY

- 162 PX4 Air® PAPR
- 172 GX4® Gas Monitor
- 182 Radex® Airline Filter
- 196 Radex® Ambient Air Pump
- 198 Air Supply
- 202 C40™ Climate Control Device
- 210 Flow Control

SAFETY ESSENTIALS

- 222 Blast Suit
- 228 Safety Glasses
- 229 Do-rag
- 229 Earmuffs
- 229 Head Sock
- 229 Knee Pads
- 229 Leather Blasting Gloves
- 229 S100™ Ear Plugs

PARTS INDEX

- 232 Full Parts Index

RESPIRATORS

Z-LINK®

**ELITE MULTI-PURPOSE
RESPIRATORY PROTECTION**

PPD® ADVANCING
YOUR SAFETY

Z-LINK®



ELITE MULTI-PURPOSE RESPIRATORY PROTECTION

The RPB® Z-Link® is more than a product. It's a system. The most versatile multi-purpose respirator on the planet. From welding and grinding to chemical handling, the Z-Link® serves the widest spectrum of industries and applications on the market.

The Z-Link®'s large visor enables you to operate with a widened perspective. It features exceptional downward and peripheral vision combined with a visor that hinges open for free air breathing and easy communication. Engineered to advance your safety. Designed to increase your productivity.

Inspired by military innovation, our R&D Special Ops Unit has relentlessly refined every last detail. The team has traveled the world to meet with and listen to operators. Ultimately, these refinements have enabled RPB® users to work smarter, not harder. Save crucial energy, time and costs in competitive industry environments, where elite protective equipment is often overlooked.

The Z-Link® is certified to the standards below and conforms to AS/NZS 1716:2012, AS/NZS 13371:2010, AS/NZS 1801:1997.



AS/NZS
CONFORMS TO
AS/NZS 1716:2012
RESPIRATORY
PROTECTION

ANSI Z89.1
EN397:2003 +A1:2009
AS/NZS 1801:1997
HARD HAT
PROTECTION

ANSI Z87+
EN166:2001
AS/NZS 13371:2010
HIGH VELOCITY IMPACT
FOR EYE & FACE

SUPERIOR COMFORT

The first padded multi-purpose respirator on the planet. A fully-adjustable Comfort-Link™ Fit System allowing for total control on helmet and head placement including the 360-degree adjustable head band and reversible brow pad.



1-866-494-4599 | rpbsafety.com

ISO9001
CERTIFIED COMPANY

Visor lifts open.

Reversible brow pad allows the choice of soft touch (smooth) or optimum comfort (fluffy) finish.

Air deflector for airflow adjustment.

Choice of 6 Anti-Fog and Scratch Resistant ANSI Z87+ visors: Premium Clear, Green Tint (Shade 3), Green Tint (Shade 5), Yellow Tint, Black Tint and Mirror Tint.

3 cape materials available: Tychem® 2000, Tychem® 4000 or Zytex® FR.

Fixed jaw ensures secure cape attachment.



Made in USA.*

*From local and globally sourced components.



Z-LINK® | RESPIRATORS

Z-LINK® | RESPIRATORS

Z-LINK+®



ELITE MULTI-PURPOSE RESPIRATORY PROTECTION

The RPB® Z-Link+® is the result of extensive user testing in demanding welding environments. Elite welding professionals benefit from reduced downtime and fatigue and increased productivity.

As the Z-Link+® clips directly onto your main visor, you can seamlessly weld with crystal-clear vision and the ability to lift up your visor to check welds and instantly begin grinding.

The Z-Link+® includes the large RPB® ADF lens with the 1.1.1.1 rating in optical quality. The all-important fourth "1", advanced angular dependence control, guarantees uniform shading and distortion-free vision, allowing you to work comfortably and effortlessly for hours across different angles.

In addition to the Z-Link® certifications, the Z-Link+® is certified to the standards below.

ANSI Z87W

EN379:2003 +A1:2009
EN175:1997 AS/NZS 1338.1:2012

WELDING EYE PROTECTION



REMOVABLE WELDING VISOR

The Z-Link+® clips directly onto your main visor, enabling you to lift up your visor to check welds and to instantly begin grinding. For extended periods of grinding the visor is easily removed at the hinge points.

1-866-494-4599 | rpbsafety.com

ISO9001
CERTIFIED COMPANY



Replaceable impact lens and removable ADF lens.

Visor lifter to easily raise and lower the welding visor.

The Z-Link+® weld visor weighs only 1.87lb (0.85kg).

Large welding auto darkening filter with a 1.1.1.1 rating.

For extended periods of grinding the visor is easily removed at the hinge points.



Made in USA.*

*From local and globally sourced components.



Z-LINK+® | RESPIRATORS

Z-LINK+® | RESPIRATORS

Z-LINK® PACKAGES

Z-LINK® - PACKAGES | RESPIRATORS



Z-LINK®
C40™ Climate Control Device
Supplied Air Breathing Tube (for Z-Link®)
Tychem® 2000 Face Seal
Part # 16-015-12



RESPIRATORS | Z-LINK® - PACKAGES

For more package options please visit rpbsafety.com/zlink
Other packages include:



Z-LINK® PACKAGES

Z-LINK®
 Z-Link+®
 PX4 Air® PAPR
 PX4 Air® Breathing Tube (for Z-Link®)
 Zytec® FR Shoulder Cape
Part # 16-079-21-FR



For more package options please visit rpb.com/zlink
 Other packages include:

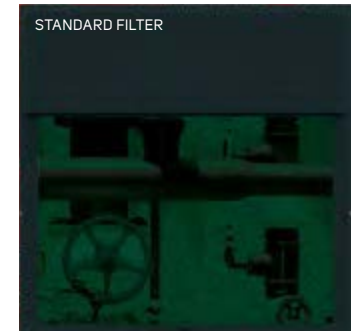
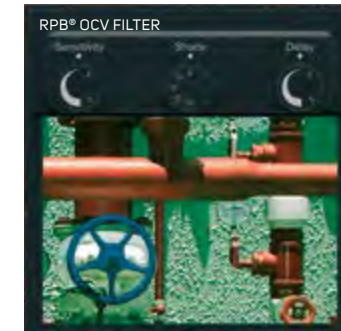


Z-LINK® ADF LENS

OPEN STATE

RPB® OCV COLOR DEFINITION

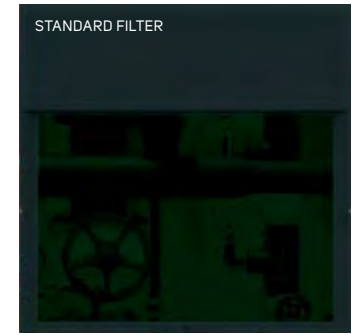
The OCV Filter range offers superior color definition in both the open and activated state, allowing the operator to clearly see LED displays on machines and equipment, as well as heat definition on the actual weld.



CLOSED STATE

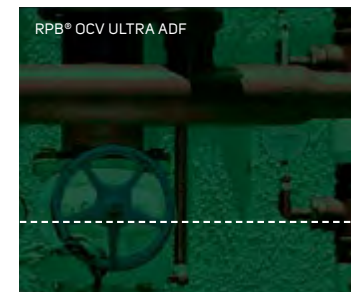
RPB® OCV OPTICAL QUALITY

The OCV filter boasts a 1/1/1 optical quality rating which is the world's best. This means a clear view from a wider range of angles, reducing eye fatigue and increasing your productivity.



40% MORE VIEWING WITH THE RPB® OCV ULTRA ADF (110X110)

- Viewing Area: 10.1 square inches (3.78" x 2.68")
- Light state: Shade 4. Dark state: Selectable shades 9-13
- Fast, reliable switching speed: 0.15ms at 73°F / 23°C
- Adjustable delay from dark to light (0.2 to 0.8 seconds)
- Weight (ADF only): 5.64 oz / 160g.
- Temperature range: 14°F to 140°F / -10°C to +60°C
- 3 year warranty
- 2 Sensors: it is the quality not the quantity of sensors that provide the fast reaction time of the filter
- Sensitivity and delay adjustment on case
- Highest quality wide view ADF available
- Constant UV/IR protection
- Accommodates standard 4" x 5" front cover lens
- Adapts to standard magnifying lens
- Solar powered
- Best optical quality in industry - 1/1/1 DIN Rating
- Suitable for all types of electro-arc welding, including covered electrodes, MIG/MAG, TIG/WIG, plasma welding and cutting. NOT FOR LASER OR GAS WELDING.



Z-LINK® - PACKAGES | RESPIRATORS

RESPIRATORS | Z-LINK® - ADF LENS

Z-LINK® PARTS

Comfort Pad
Part # 16-522



Rear Cape Clip
Part # 16-518



Earmuff Bracket
(pair, includes screws)
Part # 16-516



Impact Absorber
Part # 16-521



Ratchet Assembly
Part # 16-530



Brow Pad
Part # 16-526



Head Harness (includes 16-530)
Part # 16-531



Head Harness System
Bracket and Air Deflector
Part # 16-525



Z-LINK® PARTS

Side Padding Frames
Part # 16-527



Side Padding System
Part # 16-520-S



Foam Side Pads
Part # 16-528



FR Hose Cover
(does not include Breathing Tube)
Part # 04-854



Visor
(includes 16-612, 16-613, 16-614,
16-615, FS-04, FS-17)
Part # 16-611



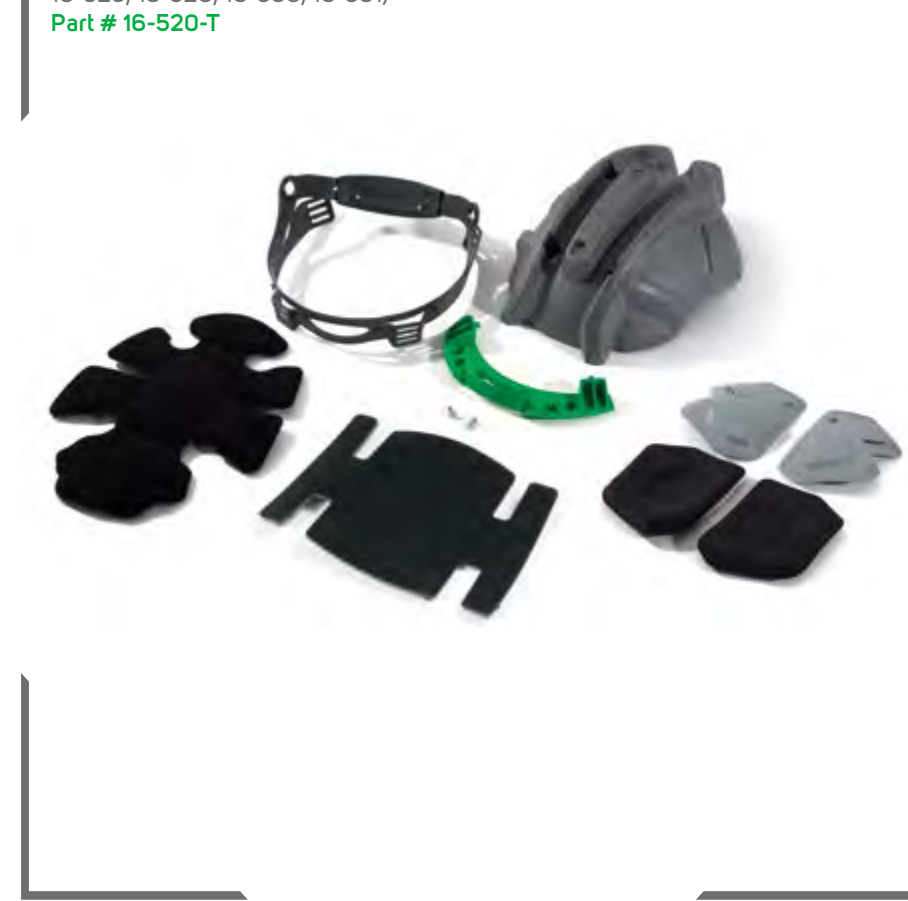
Lens Seal
Part # 16-515



Jaw Assembly
(includes screws and 16-515)
Part # 16-514



Fit System
(includes 16-520-S, 16-521, 16-522,
16-525, 16-526, 16-530, 16-531)
Part # 16-520-T



Z-Link Pivot Assembly
(includes 16-614, 16-516, 2pcs 16-615,
FS-04, 2pcs FS-17)
Part # 16-616

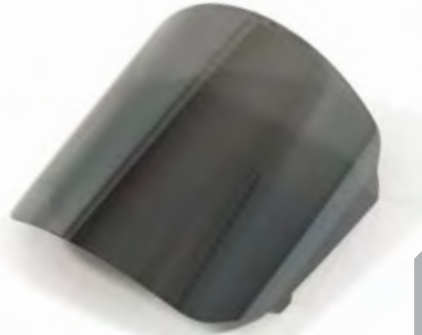


Z-LINK® - PARTS | RESPIRATORS

Z-LINK® - PARTS | RESPIRATORS

Z-LINK® PARTS

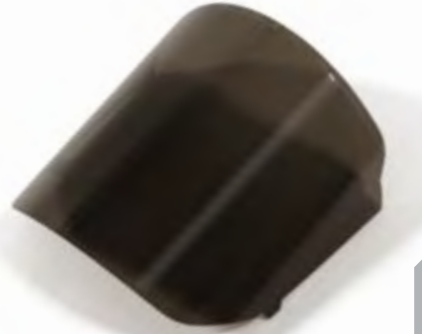
Safety Lens - Mirror Tinted
Anti Fog
Part # 16-810-MT



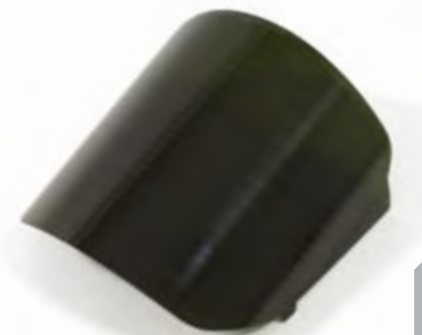
Safety Lens
Anti Fog/Anti Scratch
Part # 16-810



Safety Lens - Smoke Tinted
Anti Fog/Anti Scratch
Part # 16-810-ST



Safety Lens - Infrared (shade 5)
Part # 16-810-IR5



Safety Lens - Yellow Tinted
Anti Fog/Anti Scratch
Part # 16-810-YT



Tear-off Lens (pk 50)
Part # 16-811



Welding Lens Retainer
Part # 16-672



Ultra Magnifying Lens
(available in 1.0, 1.5, 2.0 and 2.5)
Part # 13-072- (1, 1.5, 2 or 2.5)



Welding Impact Lens (pk 10)
Part # 16-872
Z-Link® ADF Impact Lens - Aluminum Coated (pk 10)
Part # 16-872-AL
Z-Link® Protective Lens for ADF Impact Lens
- Aluminum Coated (pk 10)
Part # 16-874



PX4 Air® Breathing Tube (for Z-Link®)
Part # 04-835



Supplied Air Breathing Tube
(for Z-Link®)
Part # 04-830



Magnifying Lens Holder
Part # 16-875



Z-LINK® - PARTS | RESPIRATORS

Z-LINK® - PARTS | RESPIRATORS

Z-LINK® PARTS

ADF Rear Lens (pk 10)
Part # 16-873



Weld Visor Attachment Clips
Part # 16-673



Welding Visor
(includes 16-672, 16-673, 16-674)
Part # 16-671



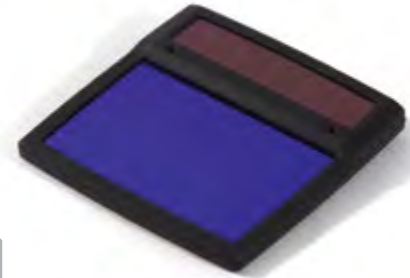
Zytec® FR Face Seal
Part # 16-711



Tychem® 4000 Shoulder Cape
Part # 16-723



ADF Lens
Part # 16-871



Welding Visor Frame
Part # 16-674



Zytec® FR Shoulder Cape
Part # 16-721



Welding Visor (includes ADF Lens)
Part # 16-670



Tychem® 2000 Face Seal
Part # 16-712



Low Flow Indicator
Part # 16-930



LINK ACCESSORIES

ADVANCED ACCESSORIES FOR
YOUR Z4®, T-LINK® & Z-LINK®



COMMS-LINK™ PARTS

Available for Z4®, T-Link® and Z-Link®

Motorola Connection Cable
(multi-pin)
Part # 09-931



Motorola Connection Cable (two-pin)
Part # 09-930



Kenwood Connection Cable
(two-pin)
Part # 09-933



Motorola Connection Cable
(multi-pin)
Part # 09-932



Motorola Connection Cable
(multi-pin)
Part # 09-934



Motorola Connection Cable
(single-pin)
Part # 09-935



Communication System
(includes 16-529 and 09-913)
(Comms-Link™ System requires 16-520-S Side Padding System)
Part # 16-922



Push to Talk Button
Part # 09-913



Communication Retainer Clip
Part # 16-529



VISION-LINK™ PARTS

Available for Z4®, T-Link® and Z-Link®

Vision-Link™ (includes 09-510-RAW, 16-918, 15-839)
Part # 16-901



Latch Lever Assembly
Part # 16-926



Latch
Part # 16-917



Jaw Mount
(for T-Link®, includes screws)
Part # 16-918



Jaw Mount (for Z-Link® and Z4®,
does not include screw)
Part # 15-839



Light (does not include battery or charger)
Part # 16-910



Cowling Seal
Part # 16-915



Battery
Part # 09-055



Battery Charger
Part # 09-050



VISION-LINK™ - PARTS | 8 | RESPIRATORS

VISION-LINK™ - PARTS | 8 | RESPIRATORS

QUIET-LINK™ PARTS

Available for T-Link® and Z-Link®

Helmet Mounted Earmuff (pair)
(includes 18-535 suspension bracket)
Part # 18-533



Ear Muff Bracket
(pair, includes screws)
Part # 16-516



1-866-494-4599 | rpbsafety.com



QUIET-LINK™ - PARTS | RESPIRATORS

RESPIRATORS | QUIET-LINK™ - PARTS



Z4[®]

**ELITE WELDING
& RESPIRATORY
PROTECTION**



Protecting you for life's best moments[®]

Z4®



ELITE WELDING & RESPIRATORY PROTECTION

Designed with the primary focus on user comfort, the RPB® Z4® is your premium welding/grinding respirator. The head harness and visor were carefully developed for optimum weight distribution, resulting in the most ergonomically balanced welding respirator on the market!

The Z4® comprises a crystal-clear grinding visor and a flip-up welding visor which you can lift to check welds and instantly begin grinding. Both shade 5 peripheral windows and opaque window blockers are included in the standard packages.

The Z4® is fitted with our large ADF lens boasting an optical quality rating of 1.1.1.1 with the all-important fourth "1". Advanced angular dependence control guarantees uniform shading and distortion-free vision, allowing operators to work comfortably across different angles as required.

To further increase your comfort, the Z4® can also be fitted with the Comfort-Link™ padding system.

The Z4® is certified to the standards below and conforms to AS/NZS 1716:2012, AS/NZS 1337.1:2010, AS/NZS 1338.1:2012.



AS/NZS

CONFORMS TO
AS/NZS 1716:2012

RESPIRATORY
PROTECTION

ANSI Z87+

EN166:2001
AS/NZS 1337.1:2010

HIGH VELOCITY IMPACT
FOR EYE & FACE

ANSI Z87W

EN379:2003 +A1:2009
EN175:1997 AS/NZS 1338.1:2012

WELDING EYE
PROTECTION

DUAL AIR DISTRIBUTION SYSTEM

Delivered through the dual air distribution system, air flows over the grinding visor to eliminate fogging and to your breathe zone via an adjustable air deflector allowing you to control the direction of the incoming air.



1-866-494-4599 | rpbsafety.com

ISO9001
CERTIFIED COMPANY

Flip up welding visor for optimum vision during grinding.

Comfortable multi-adjustment head suspension system.

Replaceable impact lens.

Clear replaceable grinding lens - ANSI Z87+ approved.

Lightweight helmet 19.2 ounces (550g) without ADF.

Aerodynamic shell designed for greater fume deflection.

Large auto darkening welding lenses with a 1.1.1.1 rating.

Replaceable impact lens and removable ADF lens.

Comfort-link™ padding system (optional).

Air is directed over the visor as well as the face via the dual air deflector.

Streamline air direction - the operator can adjust the direction of airflow.

FR rated head cover and cape.



Made in USA.*

*From local and globally sourced components.



Z4® PACKAGES



Z4® - PACKAGES | 19 | RESPIRATORS

Z4®
PX4 Air® PAPR
PX4 Air® Breathing Tube (for Z4®)
Face Seal
Part # 15-019-11-FR



RESPIRATORS | 20 | Z4® - PACKAGES

For more package options please visit rpb.com/z4
Other packages include:

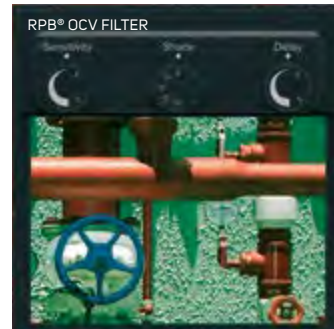


Z4® ADF LENS

OPEN STATE

RPB® OCV COLOR DEFINITION

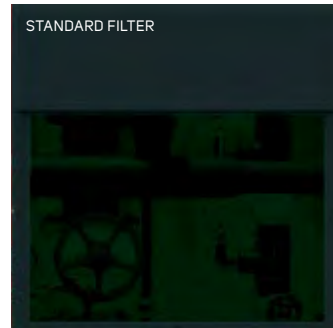
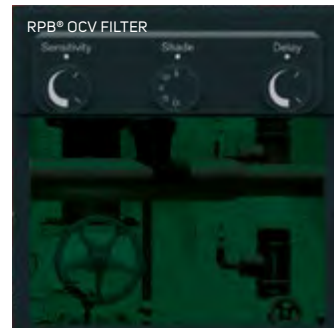
The OCV Filter range offers superior color definition in both the open and activated state, allowing the operator to clearly see LED displays on machines and equipment, as well as heat definition on the actual weld.



CLOSED STATE

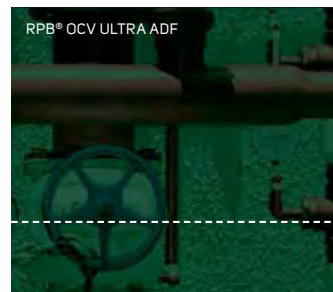
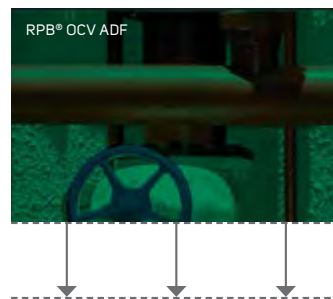
RPB® OCV OPTICAL QUALITY

The OCV filter boasts a 1/1/1/1 optical quality rating which is the world's best. This means a clear view from a wider range of angles, reducing eye fatigue and increasing your productivity.



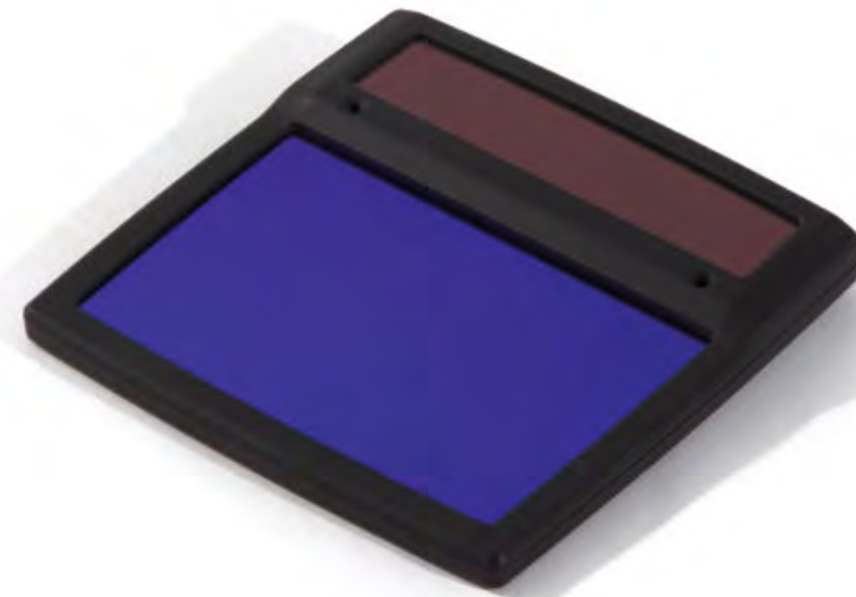
40% MORE VIEWING WITH THE RPB® OCV ULTRA ADF (110X110)

- Viewing Area: 10.1 square inches (3.78" x 2.68")
- Light state: Shade 4. Dark state: Selectable shades 9-13
- Fast, reliable switching speed: 0.15ms at 73°F / 23°C
- Adjustable delay from dark to light (0.2 to 0.8 seconds)
- Weight (ADF only): 5.64 oz / 160g.
- Temperature range: 14°F to 140°F / -10°C to +60°C
- 3 year warranty
- 2 Sensors: it is the quality not the quantity of sensors that provide the fast reaction time of the filter
- Sensitivity and delay adjustment on case
- Highest quality wide view ADF available
- Constant UV/IR protection
- Accommodates standard 4" x 5" front cover lens
- Adapts to standard magnifying lens
- Solar powered
- Best optical quality in industry - 1/1/1/1 DIN Rating
- Suitable for all types of electro-arc welding, including covered electrodes, MIG/MAG, TIG/WIG, plasma welding and cutting. NOT FOR LASER OR GAS WELDING.



Z4® PARTS

ADF Lens
Part # 16-871



ADF Rear Lens (pk 10)
Part # 16-873



Welding Impact Lens (pk 10)
Part # 16-872



Ratchet Assembly
Part # 16-530



Ultra Magnifying Lens
(available in 1.0, 1.5, 2.0 and 2.5)
Part # 13-072- (1, 1.5, 2 or 2.5)



Z4® PARTS

Weld Visor Assembly
(includes 16-672 and 15-821)
Part # 15-812



Supplied Air Breathing Tube
Assembly (for Z4®)
Part # 04-833



PX4 Air® Breathing Tube (for Z4®)
Part # 04-837



Face Shield
Part # 15-811



Welding Lens Retainer
Part # 16-672



Safety Lens (pk 10)
Part # 15-878



Magnifying Lens Holder
Part # 16-875



FR Hose Cover
(does not include Breathing Tube)
Part # 04-854



Side Window Blockers -
Solid Gray (pair)
Part # 15-821
Shade 5 (pair)
Part # 15-821-5



Head Harness
(includes 16-530 and 15-848)
Part # 15-840



Z4® - PARTS | RESPIRATORS

Z4® - PARTS | RESPIRATORS

Z4® PARTS

Front Cape Clip Cover
Part # 15-831



FR Shoulder Cape
Part # 15-721



Side Pad Mounts
(pair, includes Velcro pieces)
Part # 15-148



Foam Side Pads
Part # 16-528



FR Face Seal
Part # 15-711



Z4® Spring Assembly Kit
Part # 15-822



Head Harness Bracket and Adjustment System
Part # 15-830



Brow Pad
Part # 16-526



Comfort Side Padding System
Part # 15-848



Air Intake Assembly
(includes screws)
Part # 15-851



Safety Lens Bayonet (pair)
Part # 15-832



Z3™ WELDER

ULTIMATE RESPIRATORY
PROTECTION &
OPTICAL QUALITY



Z3™ WELDER



ULTIMATE RESPIRATORY PROTECTION & OPTICAL QUALITY

As the predecessor to the new, multi-purpose Z-Link+®, the RPB® Z3™ Welder combines respiratory protection with breakthrough optical technology.

Proven to deliver welding professionals with a comfortable working environment, the Z3™ Welder exceeds the demands of the most quality-conscious companies, while surpassing the most rigorous industry standards.

Advance your workplace safety with a product that boasts a range of truly unique design and engineering features. The Z3™ can withstand extreme temperatures without distortion due to the high performance nylon shell construction. The adjustable airflow disperser means that you can operate in a comfortable and fume-free breathing zone.

The Z3™ Welder includes the RPB® OCV filter with advanced angular dependence control providing uniform shading and distortion free vision to work comfortably across different angles. It features superior color definition in both open and activated states, allowing you to easily identify heat definition and displays on equipment.

The Z3™ has been rigorously tested through conventional safety testing methods in addition to field testing. It certified to the standards below and conforms to AS/NZS 1716:2012, AS/NZS 1337.1:2010, AS/NZS 1338.1:2012.



AS/NZS
CONFORMS TO
AS/NZS 1716:2012

RESPIRATORY
PROTECTION

ANSI Z87+
EN166:2001
AS/NZS 1337.1:2010

HIGH VELOCITY IMPACT
FOR EYE & FACE

ANSI Z87W
EN379:2003 +A1:2009
EN175:1997 AS/NZS 1338.1:2012

WELDING EYE
PROTECTION

ADJUSTABLE AIR FLOW

The Z3™ adjustable direction airflow provides clearer vision and less downtime.



1-866-494-4599 | rpb-safety.com

ISO9001
CERTIFIED COMPANY

Center positioned air inlet brings air to the breathe zone.

Lightweight helmet
14.1 ounces (399g)
without ADF.

Aerodynamic shell designed for fume deflection.

Hose support to help keep balance and free movement of head.

Heat reflecting, light gray shell manufactured from high temperature impact nylon.

Enlarged mouth and nose area to reduce CO accumulation.

Smooth rounded edge for additional comfort.

Easily replaced face seal.



Z3™ WELDER PACKAGES

ADVANCING YOUR SAFETY
Z3™ WELDER - PACKAGES | RESPIRATORS

Z3™ WELDER
PX4 Air® Breathing Tube (for Z3™)
PX4 Air®
Part # 13-109-FR



For more package options please visit rpbsafety.com/z3-welder
Other packages include:



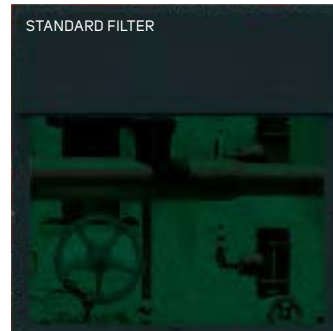
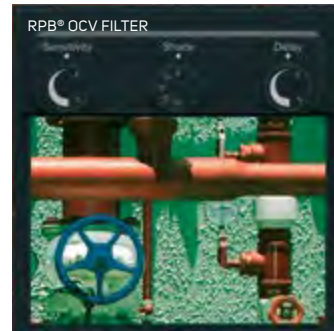
RESPIRATORS | Z3™ WELDER - PACKAGES

Z3™ WELDER ADF LENS

OPEN STATE

RPB® OCV COLOR DEFINITION

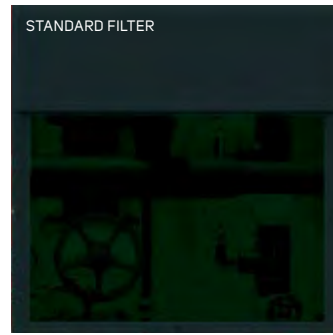
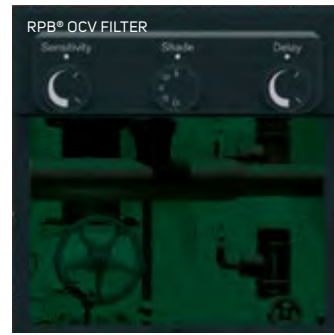
The OCV Filter range offers superior color definition in both the open and activated state, allowing the operator to clearly see LED displays on machines and equipment, as well as heat definition on the actual weld.



CLOSED STATE

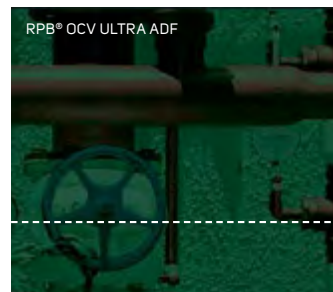
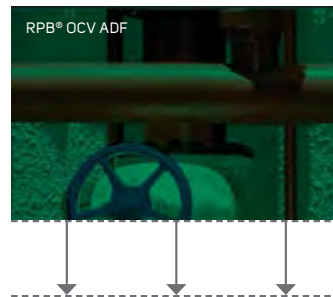
RPB® OCV OPTICAL QUALITY

The OCV filter boasts a 1/1/1 optical quality rating which is the world's best. This means a clear view from a wider range of angles, reducing eye fatigue and increasing your productivity.



40% MORE VIEWING WITH THE RPB® OCV ULTRA ADF (110X110)

- Viewing Area: 10.1 square inches (3.78" x 2.68")
- Light state: Shade 4. Dark state: Selectable shades 9-13
- Fast, reliable switching speed: 0.15ms at 73°F / 23°C
- Adjustable delay from dark to light (0.2 to 0.8 seconds)
- Weight (ADF only): 5.64 oz / 160g.
- Temperature range: 14°F to 140°F / -10°C to +60°C
- 3 year warranty
- 2 Sensors: it is the quality not the quantity of sensors that provide the fast reaction time of the filter
- Sensitivity and delay adjustment on case
- Highest quality wide view ADF available
- Constant UV/IR protection
- Accommodates standard 4" x 5" front cover lens
- Adapts to standard magnifying lens
- Solar powered
- Best optical quality in industry - 1/1/1 DIN Rating
- Suitable for all types of electro-arc welding, including covered electrodes, MIG/MAG, TIG/WIG, plasma welding and cutting. NOT FOR LASER OR GAS WELDING.



Z3™ WELDER PARTS

Outer Lens Frame
Part # 13-050



Supplied Air Breathing Tube
(for Z3™)
Part # 03-031



PX4 Air® Breathing Tube
(for Z3™)
Part # 04-839



Head Harness
Part # 13-042



Hose Holder
Part # 13-041



Z3™ WELDER PARTS

Impact Lens (pk 10)
Part # 13-052



ADF Ultra Filter
(3.78" x 2.68" / 107mm x 71.5mm)
Part # 13-062



Magnifying Lens Holder
Part # 13-071



Outer Lens Frame Seals
Part # 13-051



Ultra Magnifying Lens
(available in 1.0, 1.5, 2.0 and 2.5),
(requires 13-071)
Part # 13-072- (1, 1.5, 2 or 2.5)



Ultra Rear Lens (pk 10,
3.78" x 2.68" / 107mm x 71.5mm)
Part # 13-054



Hard Hat Adapter Clips
Part # 13-045



Swivel Air Fitting Elbow
Part # 03-032



Hard Hat (includes 13-045)
Part # 13-326



Comfort Padding
(Sweat Band, Neck Pad)
Part # 13-043



Flex Face Seal
Part # 13-323



Z100™ SERIES

LIGHTWEIGHT PROTECTION
WITH SAFETY AT THE FOREFRONT

Z100™ SERIES



LIGHTWEIGHT PROTECTION WITH SAFETY AT THE FOREFRONT

The RPB® Z100™ Series is the leading cost-effective replaceable and disposable armor on the market.

The Z100™ is manufactured from RPB® Zytec® Fabric. It is a lightweight hood that offers superior comfort in comparison with conventional, tight, full-face respirators. The hood protects the operator's entire head, eliminating the need for a head sock.

Used throughout a variety of industries from grinding to brazing, the Z100™ is equally lightweight as it is economical. Without incurring significant additional expenses, operators benefit from the Z100™'s advanced safety and superior quality while increasing productivity.

Additionally, users with facial hair commonly convert to this loose-fitting respirator, without jeopardizing or compromising on protection.



ANSI Z89.1

EN397:2003 +A1:2009
AS/NZS 1801:1997

HARD HAT
PROTECTION

SAVE TIME & MONEY

With the loose-fitting Z100™ Respirator, there is no need for time consuming fit testing, saving you time and money while maintaining OSHA compliance.

1-866-494-4599 | rpbsafety.com



ISO9001
CERTIFIED COMPANY



Loop allows for easy storage.

Air duct directs the airflow to the operator's breathing zone.

Quick release breathing tube clip provides security and is easily replaced.

Large lens, providing excellent peripheral and downward vision.

RPB® Zytec® flame resistant material designed for use in extreme environments.

Extra tuck in collar to direct the airflow over the upper body, providing additional comfort.



*From local and globally sourced components.



Z100™ SERIES PACKAGES

Z100™ SERIES - PACKAGES | RESPIRATORS



Z100™
Breathing Tube (for Z100™)
Flow Control Valve
Hard Hat
Part # 07-262-S



RESPIRATORS | Z100™ SERIES - PACKAGES

For more package options please visit rpb.com/z100-series
Other packages include:



Z100™ SERIES PARTS

Brow Pad (for 07-920, pk 5)
Part # 07-924



Zytec® FR Hood with Safety Lens
Part # 07-160-S



Chin Strap (for 07-920)
Part # 07-926



Hard Hat Clip (for 07-721)
Part # 07-125



Hard Hat
(includes 07-125 Hard Hat Clip)
Part # 07-126



Head Suspension
Part # 07-920



Peel-off Lens (pk 50)
Part # 07-123



Head Harness
Mounting Clips (pk 2)
Part # 07-121



Hose Clamp
(single bond nylon, 1-13/32)
Part # 07-122



Supplied Air Breathing Tube
(for Z100™, includes 07-122)
Part # NV2021F



PX4 Air® Breathing Tube (for Z100™,
includes 07-122)
Part # 04-836



Z100™ SERIES - PARTS | 8 | RESPIRATORS

RESPIRATORS | 8 | Z100™ SERIES - PARTS

NOVA 3[®]

**THE WORLD'S MOST
ADVANCED HEAVY
INDUSTRY RESPIRATOR**



NOVA 3®



THE WORLD'S MOST ADVANCED HEAVY INDUSTRY RESPIRATOR

The verdict is in: the RPB® Nova 3® respirator has been heralded as the industry's definitive benchmark in abrasive blasting.

With breakthrough protection technology and previously unseen advanced comfort and functionality features, the Nova 3® is designed to advance safety and productivity.

For over 40 years, users have been choosing RPB® respirators as the most comfortable across a number of industries. Operators claim the Nova 3® is the lightest and most comfortable heavy industry respirator they've ever used. It's unique weight distribution design distributes the helmet's weight evenly across the head and shoulders for optimum comfort and movability.

A ratchet adjustable neck pad ensures appropriate head support. The molded inner 'Clever Fit Padding' design (patent pending) helps absorb sound, protect hearing and is fully adjustable. It allows for unique customization to correctly fit all users and is easily removable and washable.

Although many claim safety is paramount, we walk the talk. The Nova 3® has been rigorously tested in both controlled and field testing environments - the results speak for themselves. It is certified to the standards below and conforms to AS/NZS 1716:2012, AS/NZS 1337.1:2010, AS/NZS 1801:1997.



AS/NZS
CONFORMS TO
AS/NZS 1716:2012
RESPIRATORY
PROTECTION

ANSI Z89.1
EN397:2003 +A1:2009
AS/NZS 1801:1997
HARD HAT
PROTECTION

ANSI Z87+
EN166:2001
AS/NZS 1337.1:2010
HIGH VELOCITY IMPACT
FOR EYE & FACE

BOOST PRODUCTIVITY

RPB®'s NV3-745 cassette lens is a unique system of one outer lens fused with five tear-off lenses which have pre-folded tabs.



1-866-494-4599 | rpb-safety.com

ISO9001
CERTIFIED COMPANY

Tough, high-pressure injection molded helmet shell, manufactured from engineering grade nylon.

Bellow seal creates a complete barrier to dust and particulates.

Large panoramic window that provides optimum downward and peripheral vision.

Cape is securely attached with 8 snap fasteners.

Streamlined air system that directs air to the breathe zone, reducing lens fogging and eliminating head chill.

Light gray helmet surface reflects heat while the vibrant green visor ensures visibility.

Ratchet adjustable padding system creates secure custom fit.

Large, glove sized latch that is easy to locate and use.

Removable visor for efficient lens replacement.

Clip on cape seal stops abrasives and dust entering the helmet.



Made in USA.

*From local and globally sourced components.

Nova 3® shown with optional L4 light.



NOVA 3® | RESPIRATORS

RESPIRATORS | NOVA 3®

NOVA 3® PACKAGES

NOVA 3® - PACKAGES | RESPIRATORS



NOVA 3®
Breathing Tube (for Nova 3®)
C40™ Climate Control Device
Nylon Respirator Cape
Part # NV3-705-50



RESPIRATORS | NOVA 3® - PACKAGES

For more package options please visit rpb.com/nova-3
Other packages include:



NOVA 3® PARTS

Cassette Lens System (pk 20, 5 tear-off and 1 outer lens fused together)
Part # NV3-745



Tear-off Lens (pk 50)
Part # NV3-725



Adjustable Head Support
Part # 07-900



Outer Lens (pk 50)
Part # NV3-724



Inner Lens (pk 10)
Part # NV3-722



Tinted Inner Lens (pk 10)
Part # NV3-722-T



Inner Gasket
Part # NV3-721



Inner Lens Frame
Part # NV3-723



Hinge Lock
Part # NV3-727-2



PX4 Air® Breathing Tube
(for Nova 3®)
Part # 04-837



Visor Kit (includes Hinge and Latch)
Part # NV3-726



Supplied Air Breathing Tube
(for Nova 3®)
Part # NV2021B



NOVA 3® - PARTS | 8 | RESPIRATORS

RESPIRATORS | 8 | NOVA 3® - PARTS

NOVA 3® PARTS

Visor Mount Kit (includes 4pcs FS-40 nuts and 4pcs FS-46 screws)
Part # NV3-727/8



Head Liner Kit (includes NV3-734-1)
Part # NV3-734



Padding Connectors (left and right)
Part # NV3-730



Side Padding Frames (left and right)
Part # NV3-731



Head Liner Clips (pk 4)
Part # NV3-734-1



Side Padding Foam and Covers (available in 5mm, 10mm, 15mm, and 20mm)
Part # NV3-732- (A5, A10, A15 or A20)



Head Liner Foam Padding
Part # NV3-735



Hygiene Kit (includes 2 alcohol wipes, available in 5mm, 10mm, 15mm, and 20mm)
Part # NV3-736- (A05, A10, A15 or A20)



Side Padding Covers (5 pairs)
Part # NV3-733



Neck Pad
Part # NV3-735-1



NOVA 3® PARTS

Extra Length Nylon Respirator Cape
(includes Inner Bib NV2012)
Part # NV3-751



Nylon Respirator Cape (includes Inner Bib NV2012)
Part # NV3-750



Leather Respirator Cape
(includes Inner Bib NV2012)
Part # NV3-752



Extra Length Leather Respirator Cape
(includes Inner Bib NV2012)
Part # NV3-753



Blast Jacket size XL
(includes Inner Bib NV2012)
Part # NV3-754



Blast Jacket size XXL (includes Inner Bib NV2012)
Part # NV3-755



Domes (8 sets)
Part # NV2041



Inner Bib
Part # NV2012



Cape Cover Band
Part # NV3-759



Air Inlet Kit
Part # NV3-729



NOVA 3® - PARTS | 2 | RESPIRATORS

RESPIRATORS | 2 | NOVA 3® - PARTS

NOVA 3[®] TALK[™]

ADVANCED IN-HELMET
COMMUNICATION SYSTEM



NOVA 3® TALK™



ADVANCED IN-HELMET COMMUNICATION SYSTEM

Communicate effortlessly and safely with your fellow blasters, pot tenders and team members, without having to stop what you're doing.

The undisputed champion of industrial team radio, the RPB® Nova 3® Talk™ has transformed the productivity, communication and safety of operators and businesses worldwide. The Nova 3® Talk™ is a wireless communication system, ideal for users in remote locations such as crews in tanks, shipyards, water towers and any area that is difficult to access. The Nova 3® Talk™ offers users features that include push to talk simplicity, a noise-canceling microphone, pillow foam padding, multiple harness options and much more.

NOVA 3® TALK™
Upgrade Kit (cable not supplied, see page 62)
(radio not supplied)
Part # 09-903



NOVA 3® TALK™ PARTS

ISO9001
CERTIFIED COMPANY

R-TEX High Noise Headset
(includes PTT, radio not supplied)
Part # 09-916



Chest Harness
Part # 09-814



Side Padding Covers
(for Nova 3® Talk™, 5 pairs)
Part # NV3-733TK



R-TEX High Noise Headset
(radio not supplied)
Part # 09-915



Push to Talk Button
Part # 09-913



NOVA 3® TALK™ PARTS

Motorola Connection Cable
(multi-pin)
Part # 09-931



Kenwood Connection Cable
(two-pin)
Part # 09-933



Motorola Connection Cable
(multi-pin)
Part # 09-932



Motorola Connection Cable (two-pin)
Part # 09-930



Motorola Connection Cable (multi-pin)
Part # 09-934



NOVA 3® TALK™ SPECIFICATIONS

MOTOROLA TWO-PIN RADIO MODELS

AXU4100, AXV5100, BPR40, CLS1110, CLS1410, CLS1413, CLS1450C, CLS1453C, CP100, CP150, CP185, CP200, CP88, CT125, CT150, CT250, CT450, CT450LS, DTR, DTR410, DTR550, DTR650, GP200, GP2000, GP300, GP308, GP68, GP88, GTI, GTX, LTS2000, PO40, PO80, P110, P1225, P1225LS, P200, P2000, PR400, RDK, RDU, RDU2020, RDU2080D, RDU4100, RDU4160D, RDV, RDV2020, RDV2080D, RDV5100, SP10, SP21, SP50, VL50, XTN, XTN446, XTN500, XTN600, XU1100, XU2100, XU2600, XV1100, XV2100, XV2600.

Part # 09-930

MOTOROLA MULTI-PIN RADIO MODELS

CBPRO, GP1280, GP140, GP320, GP328, GP329, GP338, GP339, GP340, GP360, GP380, GP640, GP650, GP680, GP960, HT1250, HT1250LS, HT1550, HT1550XLS, HT750, JT1000, MTX8250, MTX8250LS, MTX850, MTX850LS, MTX9250, MTX950, PR860, PRO5150, PRO5350, PRO5450, PRO5550, PRO5750, PRO7150, PRO7350, PRO7450, PRO7550, PRO7750, PRO9150, PTX700, PTX760, PTX780.

Part # 09-931

Turbo, APX 7000, XPR6300, XPR6500, XPR6550, APX7500.

Part # 09-932

GP900, GP9000, HT1000, MT1500, MT2000, MTS2000, MTX8000, MTX838, MTX900, MTX9000, MTX960, MTXLS, PRI500, X1500, XTS1500, XTS2000, XTS2500, XTS3000, XTS3500, XTS5000, GP1200.

Part # 09-934

KENWOOD TWO-PIN RADIO MODELS

TH-22AT, TH-235A, TH-28A, TH-42AT, TH-48A, TH-77A, TH-78A, TH-D7A(G), TH-F6, TH-6A, TH-G71A, TH-K2AT, TK-2100, TK-2102, TK-2130, TK-2160, TK-2170, TK-220, TK-2000, TK-2200LP, TK-2212L, TK-230VK, TK-240, TK-240D, TK-248, TK-250, TK-260, TK-260D, TK-260G, TK-270, TK-270G, TK-272G, TK-308, TK-3100, TK-3101, TK-3102, TK-3130, TK-3131, TK-3160, TK-3170, TK-3173, TK-320, TK-3200, TK-3200LP, TK-3212L, TK-3230, TK-3230XLS, TK-3302UK, TK-340, TK-340D, TK-348, TK-350, TK-353, TK-360, TK-360G, TK-370, TK-370G, TK-372G, TK-373, TK-430, TK-431, TK-2312, TK-3312.

Part # 09-933

NOTE: If the radio you are looking for is not in the above list, contact us Toll Free on 1-866-494-4599 as there is a chance we may be able to find a cable to suit.



L4™ LIGHT

ADVANCED HELMET LIGHTING SYSTEM



L4™ LIGHT



ADVANCED HELMET LIGHTING SYSTEM

Blasting in the dark can be awkward and dangerous. The RPB® L4™ Light, minimizes workplace safety hazards, reduces downtime and ensures that you have sufficient light.

The RPB® L4™ Light provides a steady, highly concentrated output of light to your field of vision. Its high-powered LEDs produce up to 650 lumens of concentrated light output with a compact, lightweight battery pack that mounts comfortably and securely on your belt.

The L4™ Light features a low-profile design, enhancing operator control with minimum protrusion and mounts securely to the top of the RPB® Nova 3® Respirator, providing light wherever the operator looks, eliminating the safety risks and inefficiencies associated with outdated nozzle lights.

Although applications have expanded since launch, it was originally developed to overcome the global need for light to assist blasters in tanks and other confined spaces where light is scarce.

Manufactured with durable, long-lasting materials.

Efficient, high powered LEDs producing up to 650 lumens of concentrated light output.

Mounts directly to the Nova 3® with no modification required.

EXTRA LONG LIFE

Long lasting Li-ion battery lasts up to 4 hours on a single charge. Batteries recharge in 3-4 hours. The lightweight battery pack mounts on your belt.



*From local and globally sourced components.

ISO9001
CERTIFIED COMPANY

L4™ LIGHT PACKAGES

L4™ LIGHT - PACKAGES | 8 | RESPIRATORS

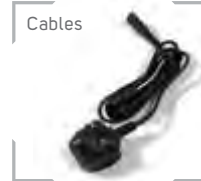


L4™ LIGHT
Part # 09-502
Part # 09-502-G
(AU/NZ, EU and UK cables also available)



RESPIRATORS | 8 | L4™ LIGHT - PACKAGES

For more package options please visit rpbsafety.com/l4-light
Other packages include:



L4™ LIGHT PARTS

Mounting Clip
Part # 09-520



Battery Pack
Part # 09-532-2



Battery Charger
(Power Cable not included)
Part # 09-525



Power Cable
US Part # 09-021
AU/NZ Part # 09-021-AU
EU Part # 09-021-EU
UK Part # 09-021-UK



Outer Lens (pk 10)
Part # 09-522



L4™ Light and Mount Kit
(includes 09-520)
Part # 09-512



NOVA 2000®

**ADVANCED ABRASIVE
BLASTING HELMET**



NOVA 2000®



ADVANCED ABRASIVE BLASTING HELMET

As the predecessor to the Nova 3®, the RPB® Nova 2000® was designed specifically for blasting, focusing on improved operator comfort to boost performance and productivity.

Featuring best-in-class hearing protection with multi-layered sound deadening foam, a streamlined air flow system and an abrasion resistant shell, the Nova 2000® meets worldwide respiratory protection standards including NIOSH, CE and AS/NZS.

Today's high safety standards in industry environments make on-site health and safety a top priority. Non-compliance or outdated equipment can likely result in unexpected costs including business disruption, injuries to valued operators and negative effects on your company's reputation. Year after year, the Nova 2000® has proven to minimize the risks to employees and businesses worldwide.

The Nova 2000® is certified to the standards below and conforms to AS/NZS 1716:2012, AS/NZS 1801:1997, AS/NZS 13371:2010.



AS/NZS
CONFORMS TO
AS/NZS 1716:2012
RESPIRATORY
PROTECTION

ANSI Z89.1
EN397:2003 +A1:2009
AS/NZS 1801:1997
HARD HAT
PROTECTION

ANSI Z87+
EN166:2001
AS/NZS 13371:2010
HIGH VELOCITY IMPACT
FOR EYE & FACE

BOOST PRODUCTIVITY

Contractors have reported a time saving of over 45 minutes per day per blaster by using the RPB® "Fit & Save™" tear-off lenses that have individually pre-folded tabs, meaning workers are guaranteed to tear off only one lens at a time.



1-866-494-4599 | rpbsafety.com

ISO9001
CERTIFIED COMPANY

Hand strap for easy transportation and storage.

Air duct distribution system directs airflow into the breathe zone, prevents fogging and keeps workers cool.

Multi-layered sound deadening foam for hearing protection.

Super tough helmet shell that is U.V. stabilized and abrasion resistant.

Abrasion resistant cape cover band.

Large viewing window for increased vision.

Snug detachable inner bib.

Cape is securely attached with 8 snap fasteners.

Choose from 5 cape options.



*From local and globally sourced components.



NOVA 2000® | RESPIRATORS

RESPIRATORS | NOVA 2000®

NOVA 2000® PACKAGES

NOVA 2000® - PACKAGES |  RESPIRATORS



NOVA 2000®
Breathing Tube (for Nova 2000®)
Flow Control Valve
Nylon Respirator Cape
Part # NV2000



RESPIRATORS |  NOVA 2000® - PACKAGES

For more package options please visit rpbsafety.com/nova-2000
Other packages include:



NOVA 2000® PARTS

NOVA 2000® - PARTS | RESPIRATORS



Window Frame Gasket
Part # NV2003



Latch Kit
Part # NV2008



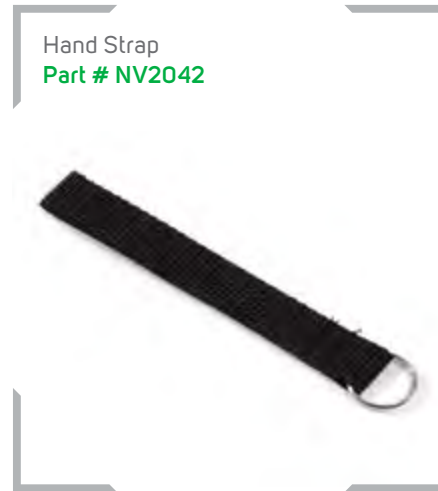
Cape Cover Band
Part # NV2013



Inner Lens (pk 10)
Part # NV2018



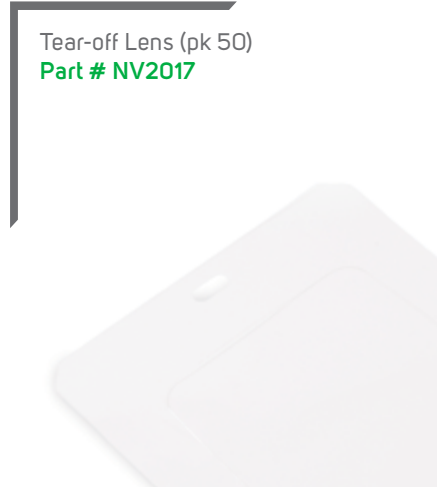
Visor Kit
Part # NV2004



Hand Strap
Part # NV2042



Tinted Inner Lens (pk 10)
Part # NV2018-T



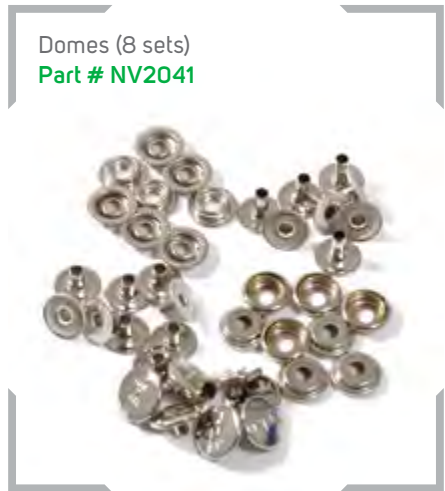
Tear-off Lens (pk 50)
Part # NV2017



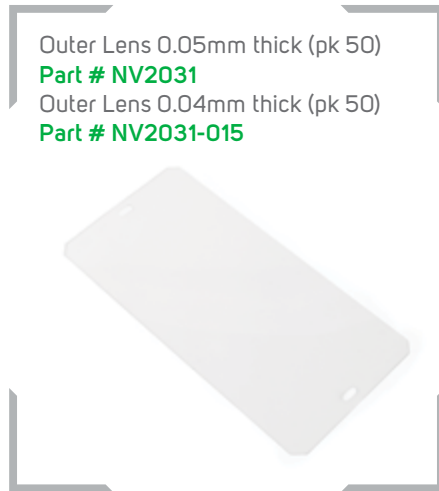
Air Inlet Assembly
Part # 03-035
(previously NV2006/7
and NV2006/7 CE)



Velstuds (pk 6)
Part # NV2038



Domes (8 sets)
Part # NV2041



Outer Lens 0.05mm thick (pk 50)
Part # NV2031
Outer Lens 0.04mm thick (pk 50)
Part # NV2031-015



RESPIRATORS | NOVA 2000® - PARTS

NOVA 2000® PARTS

Helmet Liner
 size Small **Part # NV2009SH**
 size Medium **Part # NV2009**
 size Large **Part # NV2009LH**



Hygiene Kit (includes 2 alcohol wipes)
 size Small **Part # NV2009/10SH**
 size Medium **Part # NV2009/10**
 size Large **Part # NV2009/10LH**



Supplied Air Breathing Tube
 (for Nova 2000®)
Part # NV2021B (previously NV2021)



Side Wings (pair)
 size Small **Part # NV2010SH**
 size Medium **Part # NV2010**
 size Large **Part # NV2010LH**



Side Wings (pair, for wearers
 with glasses)
 size Small **Part # NV2010GSH**
 size Medium **Part # NV2010G**
 size Large **Part # NV2010GLH**



Nylon Respirator Cape
Part # NV2002



Extra Length Nylon
 Respirator Cape
Part # NV2002XL



Leather Respirator Cape
Part # NV2002L



Nylon Blast Jacket size XL
Part # NV2002HB-XL



Nylon Blast Jacket size XXL
Part # NV2002HB-XXL



Inner Bib
Part # NV2012



NOVA 2000® - PARTS | RESPIRATORS

NOVA 2000® - PARTS | RESPIRATORS

NOVA 2000® TALK™

ADVANCED IN-HELMET COMMUNICATION SYSTEM



NOVA 2000® TALK™



ADVANCED IN-HELMET COMMUNICATION SYSTEM

Communicate effortlessly and safely with your fellow blasters, pot tenders and team members, without having to stop what you're doing.

The undisputed champion of industrial team radio, the RPB® Nova 2000® Talk™ has transformed the productivity, communication and safety of operators and businesses worldwide. The Nova 2000® Talk™ is a wireless communication system, ideal for users in remote locations such as crews in tanks, shipyards, water towers or any area that is difficult to access. The Nova 2000® Talk™ offers users features that include push to talk simplicity, a noise-canceling microphone and pillow foam padding.

NOVA 2000® TALK™
Upgrade Kit (cable not supplied, see page 88)
(radio not supplied)
Part # 09-900



NOVA 2000® TALK™ PARTS

ISO9001
CERTIFIED COMPANY

Side Wings (pair, without Headset)
Part # 09-912



Push to Talk Button
Part # 09-913



Chest Harness
Part # 09-814



R-TEX High Noise Headset
(includes PTT)
Part # 09-916



NOVA 2000® TALK™ | RESPIRATORS

RESPIRATORS | NOVA 2000® TALK™ - PARTS

NOVA 2000® TALK™ PARTS

Motorola Connection Cable
(multi-pin)
Part # 09-931



Kenwood Connection Cable
(two-pin)
Part # 09-933



Motorola Connection Cable
(multi-pin)
Part # 09-932



Motorola Connection Cable (two-pin)
Part # 09-930



Motorola Connection Cable (multi-pin)
Part # 09-934



NOVA 2000® TALK™ SPECIFICATIONS

MOTOROLA TWO-PIN RADIO MODELS

AXU4100, AXV5100, BPR40, CLS1110, CLS1410, CLS1413, CLS1450C, CLS1453C, CP100, CP150, CP185, CP200, CP88, CT125, CT150, CT250, CT450, CT450LS, DTR, DTR410, DTR550, DTR650, GP200, GP2000, GP300, GP308, GP68, GP88, GTI, GTX, LTS2000, PO40, PO80, P110, P1225, P1225LS, P200, P2000, PR400, RDK, RDU, RDU2020, RDU2080D, RDU4100, RDU4160D, RDV, RDV2020, RDV2080D, RDV5100, SP10, SP21, SP50, VL50, XTN, XTN446, XTN500, XTN600, XU1100, XU2100, XU2600, XV1100, XV2100, XV2600.

Part # 09-930

MOTOROLA MULTI-PIN RADIO MODELS

CBPRO, GP1280, GP140, GP320, GP328, GP329, GP338, GP339, GP340, GP360, GP380, GP640, GP650, GP680, GP960, HT1250, HT1250LS, HT1550, HT1550XLS, HT750, JT1000, MTX8250, MTX8250LS, MTX850, MTX850LS, MTX9250, MTX950, PR860, PRO5150, PRO5350, PRO5450, PRO5550, PRO5750, PRO7150, PRO7350, PRO7450, PRO7550, PRO7750, PRO9150, PTX700, PTX760, PTX780.

Part # 09-931

Turbo, APX 7000, XPR6300, XPR6580, XPR6500, XPR6550, APX7500.

Part # 09-932

GP900, GP9000, HT1000, MT1500, MT2000, MTS2000, MTX8000, MTX838, MTX900, MTX9000, MTX960, MTXLS, PRI500, X1500, XTS1500, XTS2000, XTS2500, XTS3000, XTS3500, XTS5000, GP1200.

Part # 09-934

KENWOOD TWO-PIN RADIO MODELS

TH-22AT, TH-235A, TH-28A, TH-42AT, TH-48A, TH-77A, TH-78A, TH-D7A(G), TH-F6, TH-6A, TH-G71A, TH-K2AT, TK-2100, TK-2102, TK-2130, TK-2160, TK-2170, TK-220, TK-2000, TK-2200LP, TK-2212L, TK-230VK, TK-240, TK-240D, TK-248, TK-250, TK-260, TK-260D, TK-260G, TK-270, TK-270G, TK-272G, TK-308, TK-3100, TK-3101, TK-3102, TK-3130, TK-3131, TK-3160, TK-3170, TK-3173, TK-320, TK-3200, TK-3200LP, TK-3212L, TK-3230, TK-3230XLS, TK-3302UK, TK-340, TK-340D, TK-348, TK-350, TK-353, TK-360, TK-360G, TK-370, TK-370G, TK-372G, TK-373, TK-430, TK-431, TK-2312, TK-3312.

Part # 09-933

NOTE: If the radio you are looking for is not in the above list, contact us Toll Free on 1-866-494-4599 as there is a chance we may be able to find a cable to suit.



NOVA 1®

**SAFER, TOUGHER
& MORE COMFORTABLE**



NOVA 1®



SAFER, TOUGHER & MORE COMFORTABLE

With a robust and large flat lens, the RPB® Nova 1® boasts all the same design features of the Nova 2000® that improve operator comfort and boost productivity.

Featuring best-in-class hearing protection with multi-layered sound deadening foam, a streamlined air flow system and an abrasion resistant shell, the Nova 1® meets worldwide respiratory protection standards including CE and AS/NZS.

Today's high safety standards make on-site health and safety a top priority. Non-compliance or outdated equipment can likely result in unexpected costs including business disruption, injuries to valued operators and negative effects on your company's reputation. Year after year, the Nova 1® minimizes the risks to employees and businesses worldwide.

Between the Nova 3®, Nova 2000®, Astro™ and Nova 1®, RPB® Safety has established itself consistently over decades as the definitive market leader in the abrasive blasting industry.

The Nova 1® is certified to the standards below and conforms to AS/NZS 1716:2012, AS/NZS 1801:1997, AS/NZS 13371:2010.

AS/NZS
CONFORMS TO
AS/NZS 1716:2012
RESPIRATORY
PROTECTION

ANSI Z89.1
EN397:2003 +A1:2009
AS/NZS 1801:1997
HARD HAT
PROTECTION

ANSI Z87+
EN166:2001
AS/NZS 13371:2010
HIGH VELOCITY IMPACT
FOR EYE & FACE

BOOST PRODUCTIVITY

Contractors have reported a time saving of over 45 minutes per day per blaster by using the RPB® "Fit & Save™" tear-off lenses that have individually pre-folded tabs, meaning workers are guaranteed to tear off only one lens at a time.

1-866-494-4599 | rpbsafety.com

ISO9001
CERTIFIED COMPANY

Air duct distribution system directs airflow into the breathe zone, prevents fogging and keeps workers cool.

Hand strap for easy transportation and storage.

Multi layered sound deadening foam for hearing protection.

Super tough helmet shell that is U.V. stabilized and abrasion resistant.

Adjustable sturdy visor frame with molded hinge designed to take different lens thicknesses.

Unique, high-strength visor strap.

Flexible breathing tube.

Large, flat lens.

Abrasion resistant cape cover band.

Durable nylon cape with comfortable seal around the neck.


Made in USA.*

*From local and globally sourced components.



RESPIRATORS | NOVA 1®

NOVA 1® | RESPIRATORS

NOVA 1® PACKAGES

NOVA 1® - PACKAGES | RESPIRATORS



NOVA 1®
Breathing Tube (for Nova 1®)
Constant Flow Valve
Nylon Respirator Cape
Part # NV1-01-50



RESPIRATORS | NOVA 1® - PACKAGES

For more package options please visit rpbsafety.com/nova-1
Other packages include:

- | | | | | | |
|----------------------------|-----------|--------------------|----------|-------------------------|--------------|
| C40 Climate Control Device | Cool Tube | Flow Control Valve | PX4 Air® | Leather Respirator Cape | Blast Jacket |
| | | | | | |

NOVA 1® PARTS

Low Flow Indicator Assembly
Part # NV2030



Cape Cover Band
Part # NV3-759



Visor Strap (pk 5)
Part # NV1-125



Inner Lens (pk 10)
Part # 02-810



Tinted Inner Lens (pk 10)
Part # 02-810-T



Outer Lens (pk 50)
Part # 02-811-015



Window Gasket Seal
Part # 02-807



Visor Kit
(includes 4pcs FS-40 nuts)
Part # NV1-124



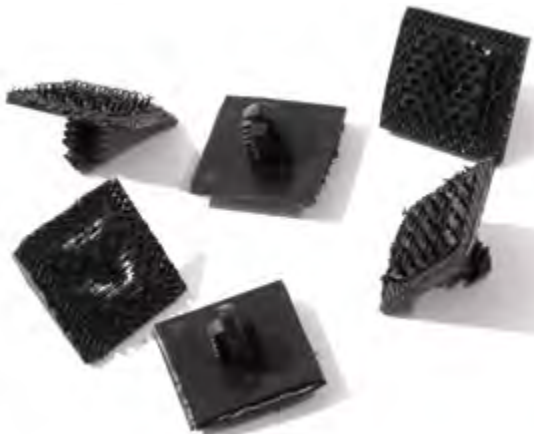
Tear-off Lens (pk 50)
Part # 02-816



Helmet Dome Holder
Part # NV1-123



Velstuds (pk 6)
Part # NV2038



NOVA 1® - PARTS | RESPIRATORS

NOVA 1® - PARTS | RESPIRATORS

NOVA 1® PARTS

Side Wings (pair)
 Size Small **Part # NV2010SH**
 Size Medium **Part # NV2010**
 Size Large **Part # NV2010LH**



Helmet Liner
 size Small **Part # NV2009SH**
 size Medium **Part # NV2009**
 size Large **Part # NV2009LH**



Side Wings (pair, for wearers with glasses)
 size Small **Part # NV2010GSH**
 size Medium **Part # NV2010G**
 size Large **Part # NV2010GLH**



Air Inlet
Part # NV3-729



Domes (8 sets)
Part # NV2041



Hygiene Kit (includes 2 alcohol wipes)
 size Small **Part # NV2009/10SH**
 size Medium **Part # NV2009/10**
 size Large **Part # NV2009/10LH**



PX4 Air® Breathing Tube
 (for Nova 1®)
Part # 04-837



Supplied Air Breathing Tube (for Nova 1®)
Part # NV2021B



NOVA 1® - PARTS | 12 | RESPIRATORS

NOVA 1® - PARTS | 12 | RESPIRATORS

NOVA 1® PARTS

Extra Length Nylon
Respirator Cape
Part # NV3-751



Blast Jacket size XXL
Part # NV3-755



Leather Respirator Cape
Part # NV3-752



Blast Jacket size XL
Part # NV3-754



Inner Bib
Part # NV2012



Nylon Respirator Cape
Part # NV3-750



Extra Length Leather
Respirator Cape
Part # NV3-753



NOVA 1® - PARTS | 11 | RESPIRATORS

RESPIRATORS | 11 | NOVA 1® - PARTS

NOVA 1[®] TALK[™]

**ADVANCED IN-HELMET
COMMUNICATION SYSTEM**



NOVA 1® TALK™



ADVANCED IN-HELMET COMMUNICATION SYSTEM

Communicate effortlessly and safely with your fellow blasters, pot tenders and team members, without having to stop what you're doing.

The undisputed champion of industrial team radio, the RPB® Nova 1® Talk™ has transformed the productivity, communication and safety of operators and businesses worldwide. The Nova 1® Talk™ is a wireless communication system, ideal for users in remote locations such as crews in tanks, shipyards, water towers and any area that is difficult to access. The Nova 1® Talk™ offers users features that include push-to-talk simplicity, a noise-canceling microphone and pillow foam padding.

NOVA 1® TALK™
Upgrade Kit (cable not supplied, see page 108)
(radio not supplied)
Part # 09-900



NOVA 1® TALK™ PARTS

ISO9001
CERTIFIED COMPANY

Side Wings (pair, without Headset)
Part # 09-912



Push to Talk Button
Part # 09-913



Chest Harness
Part # 09-814



R-TEX High Noise Headset
(includes PTT)
Part # 09-916



NOVA 1® TALK™ | RESPIRATORS

RESPIRATORS | NOVA 1® TALK™ - PARTS

NOVA 1® TALK™ PARTS

Motorola Connection Cable
(multi-pin)
Part # 09-931



Kenwood Connection Cable
(two-pin)
Part # 09-933



Motorola Connection Cable
(multi-pin)
Part # 09-932



Motorola Connection Cable (two-pin)
Part # 09-930



Motorola Connection Cable (multi-pin)
Part # 09-934



NOVA 1® TALK™ SPECIFICATIONS

MOTOROLA TWO-PIN RADIO MODELS

AXU4100, AXV5100, BPR40, CLS1110, CLS1410, CLS1413, CLS1450C, CLS1453C, CP100, CP150, CP185, CP200, CP88, CT125, CT150, CT250, CT450, CT450LS, DTR, DTR410, DTR550, DTR650, GP200, GP2000, GP300, GP308, GP68, GP88, GTI, GTX, LTS2000, PO40, PO80, P110, P1225, P1225LS, P200, P2000, PR400, RDK, RDU, RDU2020, RDU2080D, RDU4100, RDU4160D, RDV, RDV2020, RDV2080D, RDV5100, SP10, SP21, SP50, VL50, XTN, XTN446, XTN500, XTN600, XU1100, XU2100, XU2600, XV1100, XV2100, XV2600.

Part # 09-930

MOTOROLA MULTI-PIN RADIO MODELS

CBPRO, GP1280, GP140, GP320, GP328, GP329, GP338, GP339, GP340, GP360, GP380, GP640, GP650, GP680, GP960, HT1250, HT1250LS, HT1550, HT1550XLS, HT750, JT1000, MTX8250, MTX8250LS, MTX850, MTX850LS, MTX9250, MTX950, PR860, PRO5150, PRO5350, PRO5450, PRO5550, PRO5750, PRO7150, PRO7350, PRO7450, PRO7550, PRO7750, PRO9150, PTX700, PTX760, PTX780.

Part # 09-931

Turbo, APX 7000, XPR6300, XPR6580, XPR6500, XPR6550, APX7500.

Part # 09-932

GP900, GP9000, HT1000, MT1500, MT2000, MTS2000, MTX8000, MTX838, MTX900, MTX9000, MTX960, MTXLS, PRI500, X1500, XTS1500, XTS2000, XTS2500, XTS3000, XTS3500, XTS5000, GP1200.

Part # 09-934

KENWOOD TWO-PIN RADIO MODELS

TH-22AT, TH-235A, TH-28A, TH-42AT, TH-48A, TH-77A, TH-78A, TH-D7A(G), TH-F6, TH-6A, TH-G71A, TH-K2AT, TK-2100, TK-2102, TK-2130, TK-2160, TK-2170, TK-220, TK-2000, TK-2200LP, TK-2212L, TK-230VK, TK-240, TK-240D, TK-248, TK-250, TK-260, TK-260D, TK-260G, TK-270, TK-270G, TK-272G, TK-308, TK-3100, TK-3101, TK-3102, TK-3130, TK-3131, TK-3160, TK-3170, TK-3173, TK-320, TK-3200, TK-3200LP, TK-3212L, TK-3230, TK-3230XLS, TK-3302UK, TK-340, TK-340D, TK-348, TK-350, TK-353, TK-360, TK-360G, TK-370, TK-370G, TK-372G, TK-373, TK-430, TK-431, TK-2312, TK-3312.

Part # 09-933

NOTE: If the radio you are looking for is not in the above list, contact us Toll Free on 1-866-494-4599 as there is a chance we may be able to find a cable to suit.



ASTRO™

**THE LIGHTWEIGHT
INDUSTRY BENCHMARK
FOR ABRASIVE BLASTING**



ASTRO™



THE LIGHTWEIGHT INDUSTRY BENCHMARK FOR ABRASIVE BLASTING

The undisputed economical champion for an abrasive blasting helmet. The RPB® Astro™ meets safety standards worldwide, including Australia, Europe and the USA.

Weighing only 2.6lb/1.2kg (excluding the breathing tube), the Astro™'s revolutionary lightweight design has proven to reduce operator fatigue and downtime.

For users in search of a flat lens respirator, the Astro™'s best-in-class cape attachment and low lifetime maintenance and parts replacement costs offer users and businesses an unbeatable value and return on investment.

And unlike other flat lens respirator manufacturers, at RPB® Safety, we don't take shortcuts and we refuse to compromise on quality. Our rigorous production standards ensure a robust build and quality from shell to seams.

The Astro™ is certified to the standards below and conforms to AS/NZS 1716:2012.



AS/NZS
CONFORMS TO
AS/NZS 1716:2012
RESPIRATORY
PROTECTION

BOOST PRODUCTIVITY

Contractors have reported a time saving of over 45 minutes per day per blaster by using the RPB® "Fit & Save™" tear-off lenses that have individually pre-folded tabs, meaning workers are guaranteed to tear off only one lens at a time.



1-866-494-4599 | rpbafety.com

ISO9001
CERTIFIED COMPANY

Abrasive-resistant polyethylene helmet shell.

Removable head suspension allows for easy cleaning.

Hand strap for easy transportation and storage.

Sturdy visor frame with molded hinge.

Large flat lens. Optional tear-off lenses.

Unique, high-strength visor strap.

Replaceable cape cover band.

Flexible breathing tube.



*From local and globally sourced components.



ASTRO™ PACKAGES

ASTRO™ - PACKAGES | 19 | RESPIRATORS



ASTRO™
Breathing Tube (for Astro™)
Flow Control Valve
Nylon Respirator Cape
Part # 02-800



RESPIRATORS | 20 | ASTRO™ - PACKAGES

For more package options please visit rpbsafety.com/astro
Other packages include:



ASTRO™ PARTS

Leather Respirator Cape
Part # 02-814



Nylon Respirator Cape
Part # 02-813



Cape Cover Band
Part # 02-812



Inner Bib
Part # NV2012



Visor Kit (includes Strap and Screws)
Part # 02-804



Visor Strap (pk 5)
Part # 02-805



Inner Lens (pk 10)
Part # 02-810



Tinted Inner Lens (pk 10)
Part # 02-810-T



Outer Lens (pk 50)
Part # 02-811-015



Window Gasket Seal
Part # 02-807



Tear-off Lens (pk 50)
Part # 02-816



Air Inlet Assembly
Part # 03-035
(previously NV2006/7
and NV2006/7 CE)



ASTRO™ - PARTS | RESPIRATORS

ASTRO™ - PARTS | RESPIRATORS

ASTRO™ PARTS

Low Flow Indicator Assembly
Part # NV2030



Hand Strap
Part # NV2042



Cleat and Screws
Part # 02-806



Domes (8 sets)
Part # NV2041



Head Harness (CE approved)
Part # 02-809CE



Supplied Air Breathing Tube
(for Astro™)
Part # NV2021B
(previously NV2021)



Head Harness (NIOSH approved)
Part # 02-809



Suspension Clips (pk 4)
Part # 02-808



ASTRO™ - PARTS | RESPIRATORS

ASTRO™ - PARTS | RESPIRATORS

A person wearing a full-body white protective suit, including a hood with a clear face shield and a respirator mask. They are wearing blue gloves and are kneeling on a metal grating floor. They are holding a black hose connected to a piece of equipment. The background shows a white wall and some industrial equipment. The overall scene is dimly lit, with a focus on the person and their work.

T-LINK™

**DESIGNED TO WORK WITH
YOU, NOT AGAINST YOU!**

T-LINK®



RPB® T-LINK®. DESIGNED TO WORK WITH YOU, NOT AGAINST YOU!

Working longer stints never felt this good. Gone are the days of having to fight against a Tyvek® respirator. The RPB® T-Link® has been designed to assist you in your work, moving with you wherever you turn.

Below are just some of the features:

- The Tyvek® cover is securely attached to the helmet system ensuring it will never blow up off your head!
- The large viewing window enables you to operate with a widened perspective, featuring exceptional downward and peripheral vision.
- The soft, breathable inner-bib and extra tuck-in collar directs air down your body to aid cooling.

The T-Link®'s padded head-liner and head suspension system provides comfort and balanced weight distribution, making it feel lighter as there are no pressure points on your head. Being fully adjustable ensures the respirator fits securely and moves with your head, allowing you to work freely without having to worry about the hood getting in the way or messing up your fresh paint job. It is simply everything you could want in a painting respirator.

The T-Link® is certified to the standards below and conforms to AS/NZS 1716:2012, AS/NZS 1337.1:2010, AS/NZS 1801:1997.



AS/NZS
CONFORMS TO
AS/NZS 1716:2012
RESPIRATORY
PROTECTION

ANSI Z89.1*
EN397:2003 +A1:2009
AS/NZS 1801:1997
HARD HAT
PROTECTION

ANSI Z87.1*
EN166:2001
AS/NZS 1337.1:2010
IMPACT PROTECTION
FOR EYE & FACE

* Not all configurations conform to this standard. Please visit rpbsafety.com for more details.

OPTIONAL COMFORT-LINK™ FIT SYSTEM

The Comfort-Link™ is an optional, fully-adjustable fit system that allows total control of helmet and head placement as well as making sure the T-Link® moves with your head.



1-866-494-4599 | rpbsafety.com

ISO9001
CERTIFIED COMPANY



Comfortable head suspension can be adjusted for height and distance from visor.

Option of bump cap or hard hat protection.

2 cape materials available:
Dupont™ Tychem® 2000,
Dupont™ Tychem® 4000.

Breathing tube easily attaches to respirator and swivels to eliminate tangles.

Air deflector to adjust the air direction inside the respirator.

Ratchet adjustment from the outside of the hood (except Tychem® 4000 version).

Optional ANSI Z87.1 approved safety lens.

Soft, breathable inner-bib.

Large viewing window.

Long tuck-in collar for extra protection and upper body air flow.

Fixed lens frame ensures the lens will never hit your nose.

Crystal clear peel-off lenses available.



Made in USA.



T-LINK® | RESPIRATORS

T-LINK® | RESPIRATORS

T-LINK® PACKAGES

T-LINK® - PACKAGES | RESPIRATORS

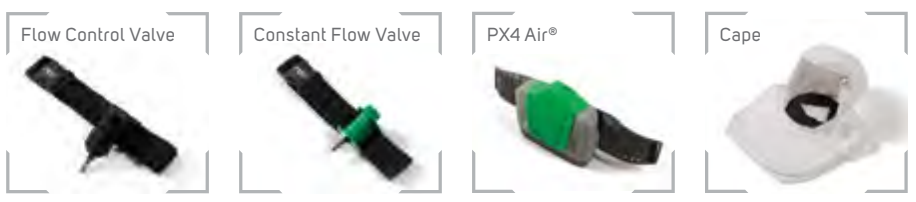


T-LINK®
Breathing Tube (for T-Link®)
C40® Climate Control Device
Part # 17-115-12



T-LINK® - PACKAGES | RESPIRATORS

For more package options please visit rpbsafety.com/t-link
Other packages include:



T-LINK® PARTS

Supplied Air Breathing Tube
(for T-Link®)
Part # 04-830



PX4 Air® Breathing Tube (for T-Link®)
Part # 04-835



Jaw (includes 16-515)
Part # 16-514



Tychem® 2000 Hood
Part # 17-712



Tychem® 2000 Hood
with Safety Lens
Part # 17-712-S



Peel-off Lens (pk 50)
Part # 07-123



T-Link® Peel-off Lens (pk 25)
Part # 17-815



T-Link® Bump Cap Assembly
Part # 17-110



Tychem® 4000 Hood
with Sealed Seams, Safety Lens
Part # 17-713-S



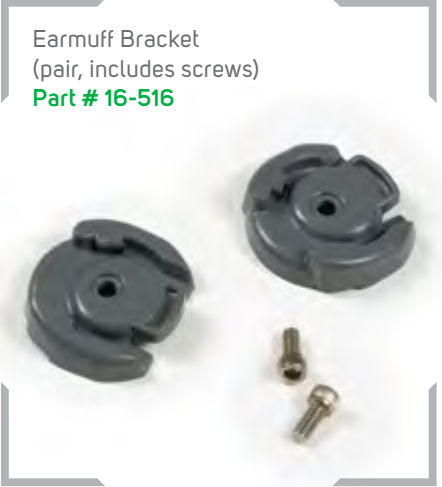
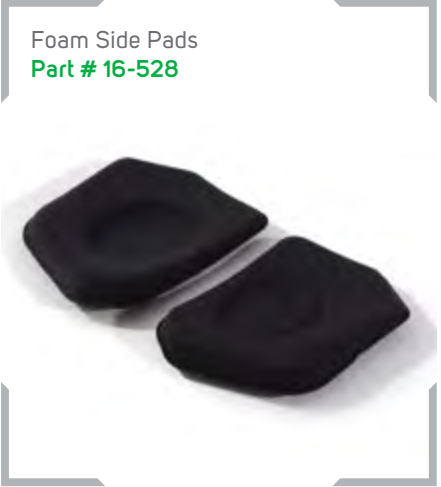
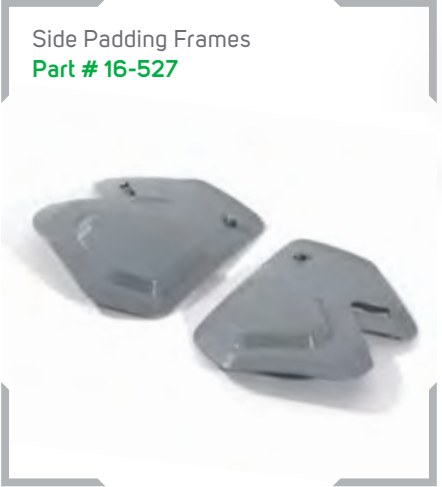
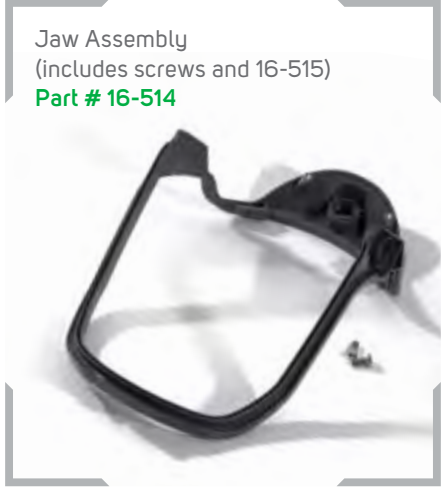
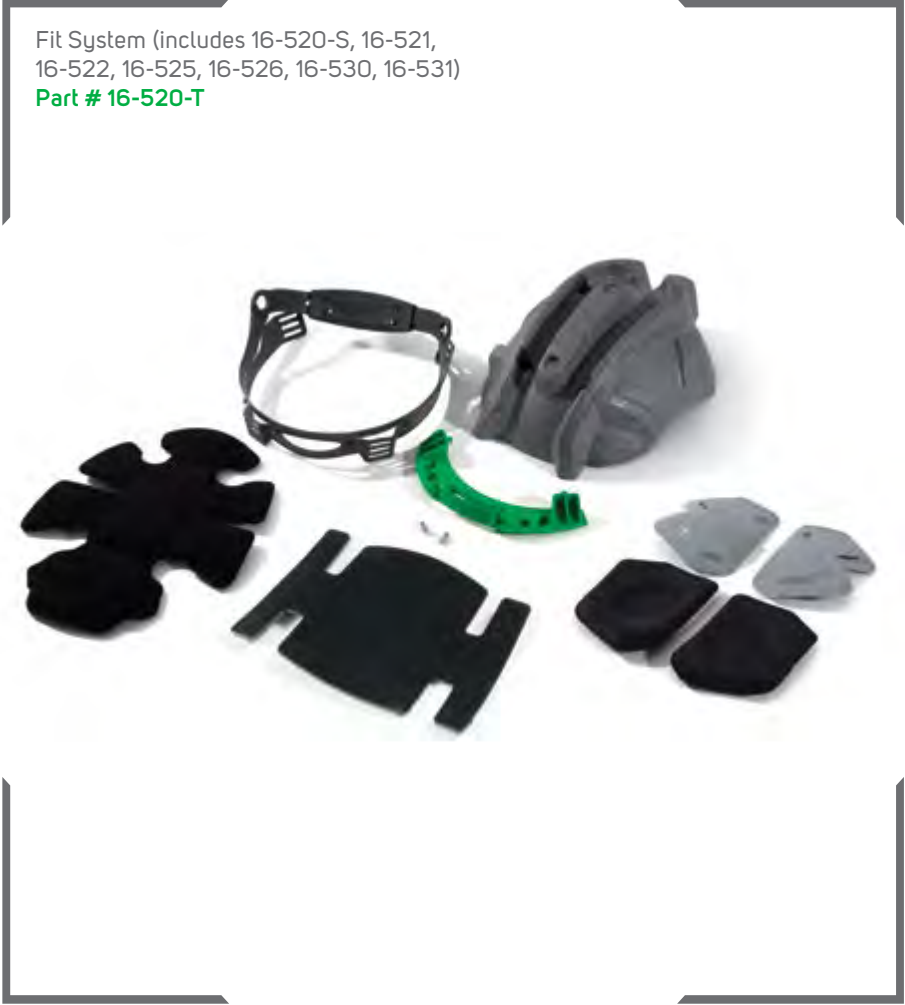
T-Link® Hard Hat Assembly
Part # 17-010



T-Link® Cassette Lens (7 layers)
Part # 17-817
T-Link® Cassette Lens (4 layers)
Part # 17-811



T-LINK® PARTS



T-LINK® - PARTS | RESPIRATORS

T-LINK® - PARTS | RESPIRATORS

T-LINK® PARTS

Ratchet Assembly
Part # 16-530



Lens Clips (pair)
Part # 17-512



T-LINK® - PARTS | 2 | RESPIRATORS

RESPIRATORS | 3 | T-LINK® PARTS

T100™ SERIES

SUPERIOR LIGHTWEIGHT
PROTECTION



T100™ SERIES



LIGHTWEIGHT PROTECTION

The RPB® T100™ Series is a cost-effective disposable respirator. The economical option that provides lightweight protection and premium quality.

Used throughout a variety of industries from industrial spray painting to chemical handling, the T100™ has been designed to be robust enough to reuse but cost effective enough to discard after use.

It is manufactured from DuPont™ Tychem® and offers superior comfort compared to conventional, tight, full-face respirators. The hood protects your entire head, eliminating the need for a head sock. A large variety of hood options with different features are available.

Users with facial hair commonly convert to loose-fitting respirators so they don't jeopardize their protection. There is no fit-testing required, saving you time and money, while maintaining OSHA compliance.



ANSI Z89.1*
EN397:2003 +A1:2009
AS/NZS 1801:1997

HARD HAT
PROTECTION

* Not all configurations conform to this standard. Please visit rpb-safety.com for more details.

1-866-494-4599 | rpb-safety.com

ISO9001
CERTIFIED COMPANY

Large lens providing excellent peripheral and downward vision.

Impact protection lens.

Tuck-in collar directs air over the upper body to provide additional cooling.

Air duct directs the airflow to the operator's breathing zone.

Optional barrier seal for more demanding environments.

Peel-off lenses protect the main lens from chemical splash, spray drift and dust.



* From local and globally sourced components.



T100™ SERIES | 14 | RESPIRATORS

T100™ SERIES | 14 | RESPIRATORS

T100™ SERIES PACKAGES



T100™ SERIES
Tychem® 2000
Breathing Tube (for T100™)
Constant Flow Valve
Standard Length Bib
Standard Lens
Part # 07-101



For more package options please visit rpbsafety.com/t100-series
Other packages include:



T100™ SERIES - PACKAGES | RESPIRATORS

T100™ SERIES - PACKAGES | RESPIRATORS

T100™ SERIES PARTS

Head Harness
Mounting Clips (pk 2)
Part # 07-121



Tychem® 2000 Hood
Part # 07-110



Hose Clamp
(Single Bond Nylon, 1-13/32)
Part # 07-122



Peel-off Lens (pk 50)
Part # 07-123



Brow Pad (for 07-920, pk 5)
Part # 07-924



Chin Strap (for 07-920)
Part # 07-926



Supplied Air Breathing Tube
(for T100™, includes 07-122)
Part # NV2021F



Head Suspension
Part # 07-920



PX4 Air® Breathing Tube
(for T100™, includes 07-122)
Part # 04-836



T100™ SERIES - PARTS | RESPIRATORS

T100™ SERIES - PARTS | RESPIRATORS

T150™ SERIES

THE ULTIMATE AIR SUPPLIED
FULL-FACED RESPIRATOR



T150™ SERIES



THE ULTIMATE AIR SUPPLIED FULL-FACE RESPIRATOR

A limited viewing area is a hazard for employees on industrial work sites, increasing risks such as tripping, falling, or even long-term eye-sight damage. Enter the RPB® T150™ NIOSH approved Type C respirator, which minimizes these risks and offers operators a superior comfort, vision and safety across a spectrum of applications from chemical stripping to spray painting and coating.

The T150™ is manufactured from polycarbonate, making it robust, yet comfortable enough for all-day protection. It has an adjustable six-point harness and thermoplastic (TPR) face seal that fits perfectly to the contours of the user's face, creating an airtight seal. It also features a panoramic lens that has been specially treated to prevent fog, scratches and acid wear and tear.

When operating in confined space applications requiring a full-face respirator, work in comfort with the knowledge that you and your team are receiving the most elite protection available.

APPLICATIONS INCLUDE

- Spray painting, coating and confined space applications
- Pharmaceutical manufacturing
- Chemical, pesticide and materials handling
- Chemical stripping
- Waste management

The comfortable nylon mesh head harness is adjustable for a secure fit, attaching via six fast release buckles.



ANSI Z87+

EN166:2001
AS/NZS 1337.1:2010
HIGH VELOCITY IMPACT
FOR EYE & FACE

BOOST PRODUCTIVITY

Protect the main lens from chemical splash, spray drift or dust with peel-off protective lenses. Pre-folded tabs ensure workers can quickly tear off just one layered lens at a time.

1-866-494-4599 | rpbsafety.com



ISO9001
CERTIFIED COMPANY

Panoramic visor provides undistorted vision.

Soft silicone inner face seal fits comfortably over mouth and nose.

Polycarbonate lens protects face from overspray and debris. Its acid-resistant coating allows it to be cleaned with thinners.

Thermoplastic (TPR) face seal guarantees a perfect fit.

Air distribution system provides anti-fog barrier to the inside of the lens.

T150™ SERIES
RESPIRATORS



T150™ SERIES PACKAGES

T150™ SERIES - PACKAGES | 19 | RESPIRATORS



T150™ SERIES
Supplied Air Breathing Tube (for T150™)
Flow Control Valve
Face Seal (TPR)
Nylon Mesh Harness
Part # 11-902-C



RESPIRATORS | 19 | T150™ SERIES - PACKAGES

For more package options please visit rpbsafety.com/t150-series
Other packages include:



T150™ SERIES PARTS

Inhalation Valves
Part # 11-912



Clamping Band
Part # 11-913



Supplied Air Breathing Tube
(for T150™)
Part # 03-031



Visor and Rubber Face Seal
Part # 11-910



Tear-off Lens (pk 50)
Part # 11-924



TPR Face Seal
Part # 11-916



Swivel Air Fitting Elbow
Part # 03-032



Visor and Valves
Part # 11-914



Nylon Head Suspension
Part # 11-934



Breathing Tube Bracket
Part # 11-948



Inner Face Seal
Part # 11-911



T150™ SERIES - PARTS | 15 | RESPIRATORS

T150™ SERIES - PARTS | 15 | RESPIRATORS

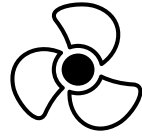
AIR MONITORING FILTRATION & SUPPLY

PX4 AIR[®] PAPR

THE ULTIMATE POWERED
AIR PURIFYING RESPIRATOR



PX4 AIR® PAPR



THE ULTIMATE POWERED AIR PURIFYING RESPIRATOR

The RPB® PX4 Air® is a robust and versatile Powered Air Purifying Respirator (PAPR) that provides clean breathing air to the full range of RPB® Safety's industry leading respirators.

Whether you're welding, grinding, painting or in a laboratory, the RPB® PX4 Air® can serve all your mobile respiratory needs.

The PX4 Air® optimizes user safety, comfort and portability. Users benefit from the safety of clean breathing air without the restriction of attached airlines, providing complete flexibility to move around as the job requires. It is NIOSH and CE certified and exceeds the requirements of AS/NZS.

APPLICATIONS INCLUDE

- Spray painting, coating and confined space applications
- Pharmaceutical manufacturing
- Chemical, pesticide and materials handling
- Chemical stripping
- Waste management
- And many more!



Long life, lightweight, Lithium rechargeable battery. Operates up to 6 hours on a single charge. Has a quick test button to view the current battery charge.



AS/NZS*
CONFORMS TO
AS/NZS 1716:2012
RESPIRATORY
PROTECTION

* Only in conjunction with respirator.

LED DISPLAY

The LED display shows battery life and fan speed. When flow is below the minimum requirements the unit alerts you by an audible and vibrating alarm.

1-866-494-4599 | rpb-safety.com

ISO9001
CERTIFIED COMPANY



Highly efficient filter cartridge provides maximum filtration.

The ultra quiet fan operates at a noise level as low as 65dba.

Electronic calibration to ensure optimum airflow.

Audible and vibrating alarm when flow is below the minimum requirements.

Two belt options available: standard webbed belt or the Nomax® FR rated belt for use in spark environments.

Ultra-efficient multi-speed German built fan.

Ergonomically designed, contouring to the operator's lower back.

Lightweight at just 2.5lbs (1.13kg).



* From local and globally sourced components.



PX4 AIR® PAPR | AIR MONITORING FILTRATION & SUPPLY

PX4 AIR® PAPR | AIR MONITORING FILTRATION & SUPPLY

PX4 AIR® PAPR PACKAGES

PX4 AIR® PAPR - PACKAGES | 19 | AIR MONITORING FILTRATION & SUPPLY



PX4 AIR® PAPR
Air Flow Tester
Mountable Charger and Battery
(Breathing Tube ordered
separately)
Part # 03-901-FR



For more package options please visit rpbsafety.com/px4-air
Other packages include:



AIR MONITORING FILTRATION & SUPPLY | 19 | PX4 AIR® PAPR - PACKAGES

PX4 AIR® PAPR PARTS

P100 Filter Cartridge
Part # 03-985



Fan Housing
Part # 03-910



PX4 Air® Breathing Tube
(for Z-Link®, T-Link®) Part # 04-835
(for T100™, Z100™) Part # 04-836
(for Z4® Nova 3®, Nova 1®) Part # 04-837
(for Z3™) Part # 04-839



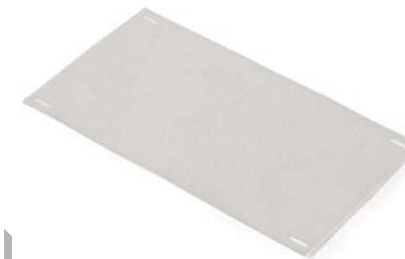
Filter Door
Part # 03-921



Pre-filter (pk 10)
Part # 03-981



OV Pre-filter (pk 10)
Part # 03-991



OV Spark Arrestor
Part # 03-992



Door Latch
Part # 03-923



Door Cover
Part # 03-922



Spark Arrestor
Part # 03-982



OV Cartridge
Part # 03-995



OV Housing Cover
Part # 03-929



PX4 AIR® PAPR - PARTS | 18 | AIR MONITORING FILTRATION & SUPPLY

AIR MONITORING FILTRATION & SUPPLY | 18 | PX4 AIR® PAPR - PARTS

PX4 AIR® PAPR PARTS

Belt Loops (pair)
Part # 03-924



Complete Charger Kit
US Part # 03-950
AU/NZ Part # 03-950-AU
EU Part # 03-950-EU
UK Part # 03-950-UK



Belt Supports (pair)
Part # 03-965



24 Volt Power Supply Unit
Part # 03-952
Includes Power Cable -
US Part # 09-021
AU/NZ Part # 09-021-AU
EU Part # 09-021-EU
UK Part # 09-021-UK



Battery Charger
Part # 03-951



Flow Meter
Part # 04-091



Battery
Part # 03-955



2" Belt with Nylon Buckle
Part # 07-765
2" NOMEX® Belt with Acetal Buckle
Part # 07-765-FR



GX4 GAS MONITOR[®]

THE ULTIMATE
MULTI-GAS DETECTOR



GX4® GAS MONITOR



THE ULTIMATE MULTI-GAS DETECTOR

Dangerous levels of toxic gases can cause severe injury or death. The RPB® GX4® Gas Monitor gives you the complete confidence that the air you and your employees breathe is safe.

Gases such as carbon monoxide are invisible to all the human senses, yet are commonly found in industrial premises worldwide. While low-level exposure may not be immediately fatal, ongoing contact at low levels has a cumulative effect, causing serious illness and long-term health concerns. Early symptoms can be mistaken for the flu, headaches or tiredness. It is a serious problem which is commonly overlooked.

The GX4® can detect up to four gases simultaneously. It includes smart device and cloud integration capabilities enabling you to view your air quality from any device, while sensors are displayed online in real time.

APPLICATIONS INCLUDE

- Spray painting, coating and confined space applications
- Pharmaceutical manufacturing
- Chemical, pesticide and materials handling
- Chemical stripping
- Waste management

Connect to the GX4® from your laptop, tablet, phone or even network to view real time data, download logs, alter alarm points and much more.



GAS SENSORS

A range of pre-calibrated gas sensors are available including CO, O₂ and H₂S. All have a 2 year shelf life.



1-866-494-4599 | rpbsafety.com

ISO9001
CERTIFIED COMPANY

Illuminated display that shows real time data.

Complete quick and easy calibration checks with no set points required.

103 DBA staccato alarm.

Monitor up to four gases simultaneously.

Robust power inlet.

Push release air inlet.

Sturdy mounting bracket.

Cartridges can be easily removed and replaced.

Strong nylon ABS case that will handle the harshest of conditions.



*From local and globally sourced components.



AIR MONITORING FILTRATION & SUPPLY | 174 | GX4® GAS MONITOR

GX4® GAS MONITOR PACKAGES



GX4® GAS MONITOR
 3 Blank Sensor Cases, CO Sensor,
 Air Supply Hose, External Flow Regulator,
 Power Adapter Pack and Mounting Bracket

- Part # 08-400-01
- Part # 08-400-01-AU
- Part # 08-400-01-UK
- Part # 08-400-02
- Part # 08-400-02-EU
- Part # 08-401-01
- Part # 08-401-02



For more package options please visit rpbsafety.com/gx4-gas-monitor
 Other packages include:

12 V Cable with
 Battery Clips



GX4® GAS MONITOR PARTS

Gas Sensor Cartridges
 Carbon Monoxide 10ppm **Part # 08-420-01**
 Carbon Monoxide 5ppm **Part # 08-420-02**
 Hydrogen Sulfide 10ppm **Part # 08-420-03**
 Oxygen 19.5% - 23% **Part # 08-420-04**

Other cartridges available please enquire.



Blank Sensor Case
Part # 08-420



Air Supply Hose and
 One Touch Connector
Part # 08-428



Power Adapter Pack
 US **Part # 08-430**
 AS/NZ **Part # 08-430-AU**
 UK **Part # 08-430-UK**
 EU **Part # 08-430-EU**



12 Volt Cable with Battery Clips
Part # 08-431



Power Cable
 US **Part # 09-021**
 AU/NZ **Part # 09-021-AU**
 UK **Part # 09-021-UK**
 EU **Part # 09-021-EU**



Heavy Duty Field Case
Part # 08-424



Mounting Bracket (pair)
Part # 08-425



Sensor Manifold Tube
Part # 08-422



Aluminum Wall Bracket
Part # 08-231



GX4® GAS MONITOR - PARTS | 17 | AIR MONITORING FILTRATION & SUPPLY

GX4® GAS MONITOR - PARTS | 17 | AIR MONITORING FILTRATION & SUPPLY

GX4® GAS MONITOR PARTS

M5 Inlet Filter,
Sintered Brass
Part # 08-429



Auxiliary Strobe and Alarm Tower
with 50' Cable
Part # 08-436



Auxiliary Cable 50'
with Bare End
Part # 08-434



Calibration Adapter
Part # 08-450



Calibration Flow Regulator
1.5 SLPM (includes 08-450,
for Zero Air and CO gas bottles)
Part # 08-451
(for H₂S gas bottles)
Part # 08-452



Zero Air (20.9% Oxygen in Nitrogen)
Part # 08-460
20ppm CO (20ppm Carbon
Monoxide in Air)
Part # 08-461
20ppm H₂S (20ppm Hydrogen
Sulfide in Nitrogen)
Part # 08-462



Auxiliary Strobe Light
with 50' Cable
Part # 08-435



External Flow Regulator
Part # 08-470
With RZ Fittings
Part # 08-470-RZ



RADEX® AIRLINE FILTER

ADVANCED FILTRATION
CAPACITY & VERSATILITY



RADEX® AIRLINE FILTER



ADVANCED FILTRATION CAPACITY & VERSATILITY

Polluted air can be the cause of major health issues and, at the very least, can adversely affect operator comfort and productivity. The RPB® Radex® Airline Filter improves the quality of the air your employees are breathing and exceeds industry filtration standards so you can be assured that your operators won't suffer the consequences of breathing contaminated air.

The filter is fitted with a large capacity, 6-stage filter cartridge that removes moisture, odor and particulates to 0.5 micron from the compressed air stream, providing clean, breathable air. The Radex® features a unique twist-and-lock wall and floor mounting system.

An optional auto drain valve is available to fit to your filter that continually removes moisture from the filter housing, increasing the lifespan of the filter cartridge.

6 OUTLET SYSTEM

Upgrade to the 6-outlet system to provide filtration to six separate airlines from one filter.

1-866-494-4599 | rpb.com



ISO9001
CERTIFIED COMPANY

Quick disconnect coupler that is compatible with brands including Aro, Cejn, Dixon and Rectus.

150 psi safety pressure relief valve.

Claw coupler port.

Outlet pressure regulator provides the ability to adjust air pressure. Range 0-125 psi (04-900 2 outlet unit only).

Replacement filter cartridges have a replacement date sticker for maintenance scheduling.

Strong, robust housing.

Wall and floor mounting system.

Fitted with brass drain tap.



Made in USA.*

*From local and globally sourced components.



AIR MONITORING FILTRATION & SUPPLY | RPB® AIRLINE FILTER



RADEX® AIRLINE FILTER PACKAGES



RADEX® AIRLINE FILTER

Part # 04-900

Radex Airline Filter (includes 04-951)

Part # 04-900-51



For more package options please visit rpbsafety.com/radex-airline-filter

RADEX® AIRLINE FILTER PACKAGES

RADEX® AIRLINE FILTER
6-outlet system
Part # 04-906



RADEX® COMPLETE BREATHING AIR SYSTEM
GX4® Gas Monitor
Micro Mist Filter 1/2"
Mainline Pre-filter
Aluminum Wall Bracket
Replacement Radex® Filter Cartridge
Brass Nipple 1/2"
Part # 04-907



For more package options please visit rpbsafety.com/radex-airline-filter

For more package options please visit rpbsafety.com/radex-airline-filter

RADEX® AIRLINE FILTER PARTS

Filter Element
(for 04-927 Mainline Pre-filter)
Part # 04-929



Micro Mist Filter 1/2"
Part # 04-925



1/4" Coupler 3/8" FNPT
Part # 04-911



3/8" Brass Cap
Part # 04-913



Pressure Regulator
Part # 04-914



3/8" Brass Tee
Part # 04-912



Auto Drain Unit
Part # 04-924



Pressure Gauge
Part # 04-915



Pressure Relief Valve (150 psi)
Part # 04-916



RADEX® AIRLINE FILTER - PARTS | AIR MONITORING FILTRATION & SUPPLY

AIR MONITORING FILTRATION & SUPPLY | RADEX® AIRLINE FILTER - PARTS

RADEX® AIRLINE FILTER PARTS

RADEX® AIRLINE FILTER - PARTS | 2 | AIR MONITORING FILTRATION & SUPPLY

Filter Lid (for 04-900)
Part # 04-918



Brass Drain Tap
Part # 04-922



3/8" Brass Nipple
Part # 04-917



Bolt, Nut, Washer (set of 4)
Part # 04-920



Claw Coupler
Part # 04-951



Auto Drain Assembly
(for 04-924 Auto Drain Unit)
Part # 04-931



Base Mount
Part # 04-923



1" x 1/2" Reducing Nipple
Part # 04-926



Parts Bag for Radex (04-900)
(includes 2x 04-911 1/4" Coupler 3/8" FNPT, 04-912 3/8" Brass Tee, 04-914 Pressure Regulator, 04-915 Pressure Gauge, 04-916 Pressure Relief Valve, replacement date sticker)
Part # 04-932

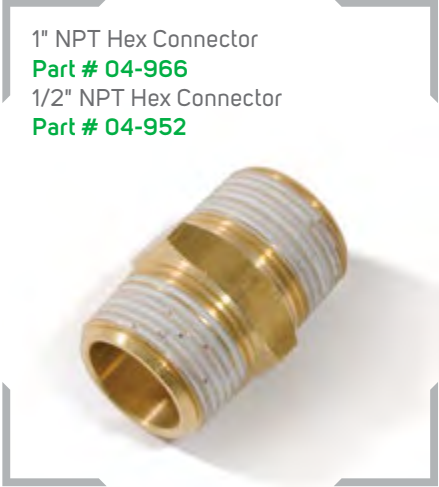


1/4" Coupler 3/8" MNPT
(to fit 04-965 Manifold)
With RZ Fitting
Part # 03-053-CM-RZ



AIR MONITORING FILTRATION & SUPPLY | 3 | RADEX® AIRLINE FILTER - PARTS

RADEX® AIRLINE FILTER PARTS



1" NPT Hex Connector
Part # 04-966
1/2" NPT Hex Connector
Part # 04-952



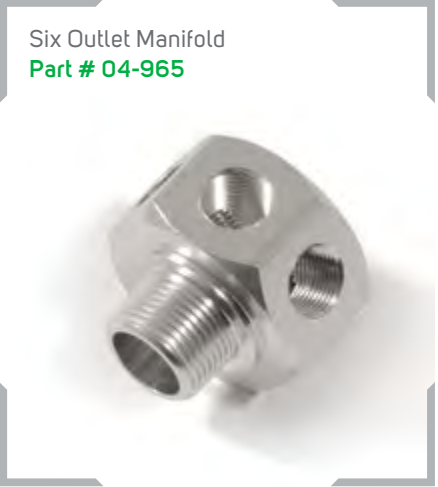
Six Man Upgrade Kit
Part # 04-960



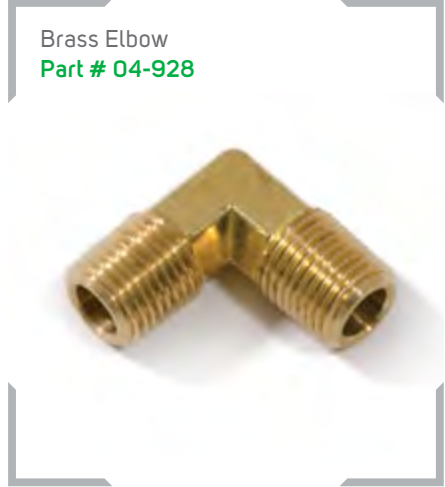
Super High Flow Regulator
(includes gauge 04-915)
Part # 04-962



Mainline Pre-filter
Part # 04-927



Six Outlet Manifold
Part # 04-965



Brass Elbow
Part # 04-928



Replacement Filter Cartridge (generic)
Part # AFC100



O-Ring (set of 2)
Part # 04-919



Six Outlet Filter Lid
Part # 04-961



Replacement Radex®
Filter Cartridge
Part # APF3100



Micro Mist Filter Element
(for 04-925 Micro Mist Filter)
Part # 04-930

RADEX® AIRLINE FILTER - PARTS | 5 | AIR MONITORING FILTRATION & SUPPLY

AIR MONITORING FILTRATION & SUPPLY | 6 | RADEX® AIRLINE FILTER - PARTS

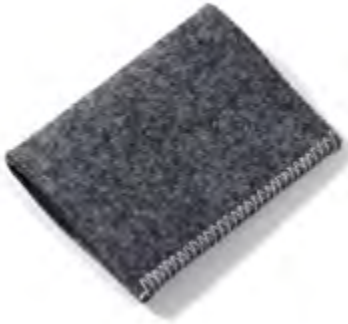
RADEX® AMBIENT AIR PUMP PACKAGES

AMBIENT AIR PUMP
One Person
Part # 06-100



RADEX® AMBIENT AIR PUMP PARTS

Inlet Filter Element
Part # 9700-01



Exhaust Filter Element
Part # 9700-02



Pressure Relief Valve
Part # 9700-03



Inlet Filter Assembly (includes 9700-01)
Part # 9700-08



Pressure Gauge
Part # 9700-04



1/2" Hansen Coupler
Part # 9700-72AD



Exhaust Filter Canister
Part # 9700-15



RADEX® AMBIENT AIR PUMP - PACKAGES | 19 | AIR MONITORING FILTRATION & SUPPLY

AIR MONITORING FILTRATION & SUPPLY | 19 | RADEX® AMBIENT AIR PUMP - PARTS

AIR SUPPLY

AIR SUPPLY PARTS

Quick Release Coupler
1/4" Female Thread
Part # NV2025
With RZ Fitting
Part # 03-052-CF-RZ
CE approved
Part # 03-022-CF



100' Breathing Air Supply Hose
3/8" Diameter (includes Quick
Release Fittings)
Part # NV2027
With RZ Fittings
Part # 04-352-100-RZ
CE approved
Part # 04-322-100



1/2" Hansen Coupler
Part # 9700-72AD



50' Breathing Air Supply Hose
3/8" Diameter (includes
Quick Release Fittings)
Part # NV2029
With RZ Fittings
Part # 04-352-50-RZ
CE approved
Part # 04-322-50



Quick Release Schrader Coupler
1/4" Female Thread
Part # 03-042-CF



25' Breathing Air Supply Hose
3/8" Diameter (includes Quick
Release Fittings)
Part # NV2028
With RZ Fittings
Part # 04-352-25-RZ
CE approved
Part # 04-322-25



100' Breathing Air Supply Hose 1/2" Diameter
(includes Quick Release Fittings*)
Part # NV2036
50' Breathing Air Supply Hose 1/2" Diameter
(includes Quick Release Fittings*)
Part # NV2035



Quick Release Schrader Tail
1/4" Female Thread
Part # 03-042-PF



*(Note: for use with low pressure air pumps)

C40™ CLIMATE CONTROL DEVICE

PREMIUM AIR TEMPERATURE
CONTROL SYSTEM

C40™ CLIMATE CONTROL DEVICE



ADVANCED AIR TEMPERATURE CONTROL SYSTEM

Working in an environment where the temperature is comfortable is key to maximizing productivity. The RPB® C40™ Climate Control Device can heat and cool your supplied air as desired.

With the slide of a lever, your employees can switch from heating to cooling ensuring they are comfortable whether they're in the searing heat of the Arizona summer, a severe Scandinavian winter or anywhere in between.

The RPB® C40™ can cool incoming air by up to 52°F (29°C) or heat it by up to 33°F (18°C). This is achieved by simply switching the mixing lever from hot to cold. The device is lightweight and ergonomically designed to sit comfortably on the operator's hip. The RPB® C40™ pairs with most of our respirator range.

APPLICATIONS INCLUDE

- Spray painting, coating and confined space applications
- Pharmaceutical manufacturing
- Chemical, pesticide and materials handling
- Chemical stripping
- Waste management



* Only in conjunction with respirator.

LOW MAINTENANCE

Low maintenance required. The air silencers are the only parts that need cleaning or replacing.



1-866-494-4599 | rpbsafety.com

ISO9001
CERTIFIED COMPANY

Lightweight - weighing only 9.8oz (277 grams) excluding belt.

Durable belt.

Manufactured from robust materials, designed and tested for the harshest conditions.


Made in USA.*

* From local and globally sourced components.

Easily adjust the temperature using this lever.

Increase or decrease the airflow by turning the flow control dial.

Choose from a range of plugs to suit your application.

Air inlet swivels 360° to ensure the device sits comfortably on the operator's hip.

AIR MONITORING FILTRATION & SUPPLY | C40™ CLIMATE CONTROL DEVICE



C40™ CLIMATE CONTROL DEVICE ASSEMBLY

C40™ CLIMATE CONTROL DEVICE - ASSEMBLY | 20 | AIR MONITORING FILTRATION & SUPPLY



C40™ CLIMATE CONTROL DEVICE (NIOSH approved)
Part # 03-501
C40™ CLIMATE CONTROL DEVICE (CE approved)
Part # 03-502
WITH RZ FITTING
Part # 03-501-RZ



AIR MONITORING FILTRATION & SUPPLY | 20 | C40™ CLIMATE CONTROL DEVICE - ASSEMBLY

For more package options please visit rpbsafety.com/c40-climate-control

1-866-494-4599 | rpbsafety.com



C40™ CLIMATE CONTROL DEVICE PARTS

Top Case Assembly
Part # 03-521



U Tube Assembly
Part # 03-510



Bottom Case
Part # 03-514



1/4" Plug to 1/4" NPT
Male Swivel
Part # 03-012-PMS



1/4" Safety Plug to
1/4" NPT Male Swivel
Part # 03-022-PMS



1/4" Male Thread
RZ Coupler Swivel Plug
Part # 03-052-PMS-RZ



Silencer Assembly
Part # 03-526



Exhaust Assembly
Part # 03-522



2" Belt with Nylon Buckle
Part # 07-765
2" NOMEX® Belt with Acetal Buckle
Part # 07-765-FR



Silencers (pair)
Part # 03-537



Inlet Collar
Part # 03-536



Belt Loop
Part # 03-538



FLOW CONTROL

ADVANCED AIR
TEMPERATURE CONTROL



COLD AIR TUBE



ADVANCED AIR TEMPERATURE CONTROL

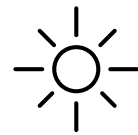
The RPB® Cold Air Tube is part of RPB® Safety's range of economical climate control assemblies. It significantly cools your air supply for optimum performance and comfort when operating in climate and environmental extremes.

RPB® 4000-01 COLD AIR TUBE ASSEMBLY

The RPB® 4000-01 is manufactured from engineering grade plastic which is extremely robust and ideal for the rigors of the workplace. It cools compressed breathing air entering respirators by as much as 32°F (18°C).



HOT AIR TUBE



ADVANCED AIR TEMPERATURE CONTROL

The RPB® Hot Air Tube is part of RPB® Safety's range of economical climate control assemblies. It significantly heats your air supply for optimum performance and comfort when operating in climate and environmental extremes.

RPB® 4000-20 HOT AIR TUBE ASSEMBLY

The RPB® 4000-20 is manufactured from engineering grade plastic which is extremely robust and ideal for the rigors of the workplace. It warms compressed breathing air entering respirators by as much as 30°F (17°C).



* Only in conjunction with respirator.

1-866-494-4599 | rpbsafety.com

All parts are easily removable for maintenance and cleaning.

Strong nylon belt.

Regulator to control air temperature and airflow.

Tough engineering plastic designed for harsh conditions.



* From local and globally sourced components.



FLOW CONTROL PARTS

Cold Air Tube Assembly (NIOSH approved)
Part # 4000-01
 (CE approved, includes Temperature Shield and Swivel Connector)
Part # 4000-01CE
 Cold Air Tube Assembly GHT Thread
Part # 4000-02-GHT



Cool Air Tube Body
Part # 4000-05B



Cold Air Spinner
Part # 4000-04



Top Thread Cap BSP Thread
 (for 4000-01)
Part # 4000-03



Outlet Valve Complete Assembly
Part # 4000-18



Top Thread Cap GHT Thread
 (for 4000-20)
Part # 4000-03GHT



Hot Air Tube Assembly
 (NIOSH approved) **Part # 4000-20**
 (CE approved) **Part # 4000-20CE**



Breaker
Part # 4000-07



Silenced Cool
 Air Tube Assembly
Part # 4000-40



Hot Air Tube Body
Part # 4000-05R



FLOW CONTROL - PARTS | 21 | AIR MONITORING FILTRATION & SUPPLY

AIR MONITORING FILTRATION & SUPPLY | 21 | FLOW CONTROL - PARTS

FLOW CONTROL PARTS

<p>Retainer Nut Part # 4000-17</p> 	<p>Outlet Valve (for 4000-40) Part # 4000-38</p> 
<p>Flow Reducer Part # 4000-14</p> 	<p>Outlet Valve Part # 4000-15</p>  <p>Hot Air Spinner Part # 4000-13</p> 

<p>Regulator Assembly Part # 4000-11</p> 	<p>Silencer Disc Part # 4000-16</p> 	<p>Silencer Disc - Brass Part # 4000-16B</p> 
<p>Regulator Body Part # 4000-08</p> 	<p>Constant Flow Valve Assembly (NIOSH approved) Part # 03-101 (CE approved) Part # 03-102</p> 	
<p>Spindle and Knob Part # 4000-09</p> 		

FLOW CONTROL - PARTS | 216 | AIR MONITORING FILTRATION & SUPPLY

FLOW CONTROL - PARTS | 217 | AIR MONITORING FILTRATION & SUPPLY

FLOW CONTROL PARTS

Safety Quick Release Tail 1/4" Male Thread
Part # NV2032CE



Flow Control Valve (NIOSH approved)
Part # NV2016
(CE approved)
Part # NV2016CE



Adapter 1/2" Low Pressure Plug to 3/8" NPT Male Thread
Part # NV2034



Adapter 1/4" RPB® Plug to 3/8" NPT Male Thread
Part # 03-111



Quick Release Tail 1/4" Male Thread
Part # 03-012-PM
(previously 4000-06)
With RZ Fitting
Part # 03-052-PM-RZ



Belt Complete with Buckles
Part # NV2022



Locking Screw
Part # 4000-10



Temperature Shield
Part # 4000-12



Constant Flow Valve - Low Pressure
Part # 03-106



Schrader Plug to 1/4" NPT Male Thread
Part # 03-042-PM



FLOW CONTROL - PARTS | 21 | AIR MONITORING FILTRATION & SUPPLY

AIR MONITORING FILTRATION & SUPPLY | 22 | FLOW CONTROL - PARTS

SAFETY ESSENTIALS

BLAST SUIT

ADVANCED COMFORT
& USABILITY



BLAST SUIT



ADVANCED COMFORT & USABILITY

The nature of abrasive blasting creates dangerous environments for operators. The RPB Blast Suit is a lightweight suit that provides protection against abrasive rebound.

The blast suit features triple stitching for durability and replaceable knee pads for extra comfort and protection.

Blast Suit is available in size range Small - XXXXL.
Part # 07-755-(S-XXXXL)

RPB® Blast Suit Size Chart (INCH)

SIZE	S	M	L	XL	XXL	XXXL	XXXXL
CHEST	36	38	40	42	44	46	48
WAIST	32	34	36	38	40	42	44
HIP	38	40	42	44	46	48	50
TOTAL LENGTH	60	62	63	64	65	66	68
INSIDE LEG	30	30	30	30	30	30	30

Available in 7 sizes.

ADDITIONAL COMFORT

Sore knees from kneeling? Try the RPB® unique knee pad which insert into the Blast Suits internal knee pockets for maximum comfort.



1-866-494-4599 | rpbsafety.com

ISO9001
CERTIFIED COMPANY



SAFETY ESSENTIALS

ADVANCED
SAFETY SUPPORT



SAFETY ESSENTIALS



ADVANCED SAFETY SUPPORT

As you know, it is essential to take care of small details to protect your employees in dangerous environments. How can you be certain that your employees are protected? RPB's safety essentials range takes care of the details, and are ideal for use in conjunction with our respiratory equipment, ensuring your employees are safe, comfortable and productive.

SAFETY GLASSES

The RPB® Safety Glasses advance your safety and increase your productivity as they are protective, comfortable, cost effective and reliable. Three different styles are available, each with either clear or smoked lenses.

Safety Glasses - Clear
Part # 18-221-C



Safety Glasses - Smoked
Part # 18-221-S



Plus Safety Glasses - Clear
Part # 18-241-C



Plus Safety Glasses - Smoked
Part # 18-241-S



Ultra Safety Glasses - Clear
Part # 18-261-C



Ultra Safety Glasses - Smoked
Part # 18-261-S



Do-rag
The RPB® Do-rag is made from soft, breathable cotton fabric, and features a sweat band to keep sweat out of the operator's eyes when wearing a respirator.
Part # 05-613



Head Sock (pk 10)
The RPB® Head Socks provide protection from overspray and dust.
Part # 05-601



Knee Pads (pair)
Part # 07-761



Earmuffs (NRR 28)
Part # 18-513



Leather Blasting Gloves
The RPB® Leather Gloves are made from premium quality leather with Kevlar® stitching for durability. They feature a double layer palm and extra leather strip on the outside for additional protection. The lining is soft and comfortable.
Part # 07-701



S100™ Ear Plugs (200 pairs)
The RPB® S100™ Ear Plugs are manufactured from soft, quality foam. They feature the comfortable "bell shape". NRR 32 decibels.
Part # 18-322



FULL PARTS INDEX

FULL PARTS INDEX



FULL PARTS INDEX

Z-LINK®

PAGE 16	PART #
Supplied Air Breathing Tube (for Z-Link®)	04-830
PX4 Air® Breathing Tube (for Z-Link®)	04-835
FR Hose Cover (does not include Breathing Tube)	04-854
Ultra Magnifying Lens 1.0	13-072-1
Ultra Magnifying Lens 1.5	13-072-1.5
Ultra Magnifying Lens 2.0	13-072-2
Ultra Magnifying Lens 2.5	13-072-2.5
Jaw Assembly (includes screws and 16-515)	16-514
Lens Seal	16-515
Earmuff Bracket (pair, includes screws)	16-516
Rear Cape Clip	16-518
Side Padding System	16-520-S
Fit System (includes 16-520-S, 16-521, 16-522, 16-525, 16-526, 16-530, 16-531)	16-520-T
Impact Absorber	16-521
Comfort Pad	16-522
Head Harness System Bracket and Air Deflector	16-525
Brow Pad	16-526
Side Padding Frames	16-527
Foam Side Pads	16-528
Ratchet Assembly	16-530
Head Harness (includes 16-530)	16-531
Visor (includes 16-612, 16-613, 16-614, 16-615, FS-04, FS-17)	16-611
Z-Link® Pivot Assembly (includes 16-614, 16-516, 2pcs 16-615, FS-04, 2pcs FS-17)	16-616
Welding Visor (includes ADF Lens)	16-670
Welding Visor (includes 16-672, 16-673, 16-674)	16-671
Welding Lens Retainer	16-672
Weld Visor Attachment Clips	16-673
Welding Visor Frame	16-674
Zytec® FR Face Seal	16-711
Tychem® 2000 Face Seal	16-712
Zytec® FR Shoulder Cape	16-721
Tychem® 4000 Shoulder Cape	16-723
Safety Lens Anti Fog/Anti Scratch	16-810
Safety Lens - Infrared (shade 5)	16-810-IR5
Safety Lens - Mirror Tinted Anti Fog	16-810-MT
Safety Lens - Smoke Tinted Anti Fog/Anti Scratch	16-810-ST
Safety Lens - Yellow Tinted Anti Fog/Anti Scratch	16-810-YT
Tear-off Lens (pk 50)	16-811
ADF Lens	16-871
Welding Impact Lens (pk 10)	16-872
Z-Link® ADF Impact Lens - Aluminum Coated (pk 10)	16-872-AL
ADF Rear Lens (pk 10)	16-873
Z-Link® Protective Lens for ADF Impact Lens - Aluminum Coated (pk 10)	16-874

Z-LINK® continued

PAGE 16	PART #
Magnifying Lens Holder	16-875
Low Flow Indicator	16-930

LINK ACCESSORIES	PAGE 26	PART #
Battery Charger	09-050	
Battery	09-055	
Push to Talk Button	09-913	
Motorola Connection Cable (two-pin)	09-930	
Motorola Connection Cable (multi-pin)	09-931	
Motorola Connection Cable (multi-pin)	09-932	
Kenwood Connection Cable (two-pin)	09-933	
Motorola Connection Cable (multi-pin)	09-934	
Motorola Connection Cable (single-pin)	09-935	
Jaw Mount (for Z-Link® and Z4®, does not include screw)	15-839	
Earmuff Bracket (pair, includes screws)	16-516	
Communication Retainer Clip	16-529	
Vision-Link™ (includes 09-510-RAW, 16-918, 15-839)	16-901	
Light (does not include charger)	16-910	
Cowling Seal	16-915	
Latch	16-917	
Jaw Mount (for T-Link®, includes screws)	16-918	
Communication System (includes 16-529 and 09-913)	16-922	
Latch Lever Assembly	16-926	
Helmet Mounted Earmuff (pair)	18-533	

Z4®

PAGE 39	PART #
Supplied Air Breathing Tube (for Z4®)	04-833
PX4 Air® Breathing Tube (for Z4®)	04-837
FR Hose Cover (does not include Breathing Tube)	04-854
Ultra Magnifying Lens 1.0	13-072-1
Ultra Magnifying Lens 1.5	13-072-1.5
Ultra Magnifying Lens 2.0	13-072-2
Ultra Magnifying Lens 2.5	13-072-2.5
Side Pad Mounts (pair, includes Velcro pieces)	15-148
FR Face Seal	15-711
FR Shoulder Cape	15-721
Weld Visor Assembly (includes 16-672 and 15-821)	15-812
Side Window Blockers - Solid Gray (pair)	15-821
Z4® Spring Assembly Kit	15-822
Side Window Blockers -Shade 5 (pair)	15-821-5
Head Harness Bracket and Adjustment System	15-830
Front Cape Clip Cover	15-831
Safety Lens Bayonet (pair)	15-832

Z4® continued

PAGE 39	PART #
Face Shield	15-811
Front Cape Clip Cover	15-831
Head Harness (includes 16-530 and 15-848)	15-840
Comfort Side Padding System	15-848
Air Intake Assembly (includes screws)	15-851
Safety Lens (pk 10)	15-878
Brow Pad	16-526
Foam Side Pads	16-528
Ratchet Assembly	16-530
Welding Lens Retainer	16-672
ADF Lens	16-871
Welding Impact Lens (pk 10)	16-872
ADF Rear Lens (pk 10)	16-873
Magnifying Lens Holder	16-875

Z3™ WELDER

PAGE 51	PART #
Supplied Air Breathing Tube (for Z3™)	03-031
Swivel Air Fitting Elbow	03-032
PX4 Air® Breathing Tube (for Z3™)	04-839
Hose Holder	13-041
Head Harness	13-042
Comfort Padding (Sweat Band, Neck Pad)	13-043
Hard Hat Adapter Clips	13-045
Outer Lens Frame	13-050
Outer Lens Frame Seals	13-051
Impact Lens (pk 10)	13-052
Ultra Rear Lens (pk 10) (3.78" x 2.68" / 107mm x 71.5mm)	13-054
ADF Ultra Filter (3.78" x 2.68" / 107mm x 71.5mm)	13-062
Magnifying Lens Holder	13-071
Ultra Magnifying Lens 1.0	13-072-1
Ultra Magnifying Lens 1.5	13-072-1.5
Ultra Magnifying Lens 2.0	13-072-2
Ultra Magnifying Lens 2.5	13-072-2.5
Flex Face Seal	13-323
Hard Hat (includes 13-045)	13-326

Z100™ SERIES

PAGE 60	PART #
PX4 Air® Breathing Tube (for Z100™, includes 07-122)	04-836
Head Harness Mounting Clips (pk 2)	07-121
Hose Clamp (single bond nylon, 1-13/32)	07-122
Peel-off Lens (pk 50)	07-123
Hard Hat Clip (for 07-721)	07-125
Hard Hat (includes 07-125 Hard Hat Clip)	07-126

Z100™ SERIES continued

PAGE 60	PART #
Zytec® FR Hood with Safety Lens	07-160-S
Head Suspension	07-920
Brow Pad (for 07-920, pk 5)	07-924
Chin Strap (for 07-920 and 07-721)	07-926
Supplied Air Breathing Tube (for Z100™, includes 07-122)	NV2021F

NOVA 3®

PAGE 68	PART #
PX4 Air® Breathing Tube (for Nova 3®)	04-837
Adjustable Head Support	07-900
Inner Bib	NV2012
Supplied Air Breathing Tube (for Nova 3®)	NV2021B
Domes (8 sets)	NV2041
Inner Gasket	NV3-721
Inner Lens (pk 10)	NV3-722
Tinted Inner Lens (pk 10)	NV3-722-T
Inner Lens Frame	NV3-723
Outer Lens (pk 50)	NV3-724
Tear-off Lens (pk 50)	NV3-725
Visor Kit (includes Hinge and Latch)	NV3-726
Hinge Lock	NV3-727-2
Visor Mount Kit	NV3-727/8
Air Inlet Kit	NV3-729
Padding Connections (left and right)	NV3-730
Side Padding Frames (left and right)	NV3-731
Side Padding Foam and Covers 5mm	NV3-732-A05
Side Padding Foam and Covers 10mm	NV3-732-A10
Side Padding Foam and Covers 15mm	NV3-732-A15
Side Padding Foam and Covers 20mm	NV3-732-A20
Side Padding Covers (5 pairs)	NV3-733
Head Liner Kit (includes NV3-734-1)	NV3-734
Head Liner Clips (pk 4)	NV3-734-1
Head Liner Foam Padding	NV3-735
Neck Pad	NV3-735-1
Hygiene Kit 5mm (includes 2 alcohol wipes)	NV3-736-A05
Hygiene Kit 10mm (includes 2 alcohol wipes)	NV3-736-A10
Hygiene Kit 15mm (includes 2 alcohol wipes)	NV3-736-A15
Hygiene Kit 20mm (includes 2 alcohol wipes)	NV3-736-A20
Cassette Lens System (pk 20)	NV3-745
Nylon Respirator Cape (includes Inner Bib NV2012)	NV3-750
Extra Length Nylon Respirator Cape (includes Inner Bib NV2012)	NV3-751
Leather Respirator Cape (includes Inner Bib NV2012)	NV3-752
Extra Length Leather Respirator Cape (includes Inner Bib NV2012)	NV3-753
Blast Jacket size XL (includes Inner Bib NV2012)	NV3-754
Blast Jacket size XXL (includes Inner Bib NV2012)	NV3-755
Cape Cover Band	NV3-759

FULL PARTS INDEX

NOVA 3® TALK™

PAGE 77	PART #
Chest Harness	09-814
Nova 3® Talk™ Upgrade Kit	09-903
Push to Talk Button	09-913
R-TEX High Noise Headset	09-915
R-TEX High Noise Headset (includes PTT)	09-916
Motorola Connection Cable (two-pin)	09-930
Motorola Connection Cable (multi-pin)	09-931
Motorola Connection Cable (multi-pin)	09-932
Kenwood Connection Cable (two-pin)	09-933
Motorola Connection Cable (multi-pin)	09-934
Side Padding Covers (for Nova 3® Talk™, 5 pairs)	NV3-733TK

L4™ LIGHT

PAGE 86	PART #
Power Cable - US	09-021
Power Cable - AU/NZ	09-021-AU
Power Cable - EU	09-021-EU
Power Cable - UK	09-021-UK
L4™ Light and Mount Unit (includes 09-520)	09-512
Mounting Clip	09-520
Outer Lens (pk 10)	09-522
Battery Charger (Power cable not included)	09-525
Battery Pack	09-532-2

NOVA 2000®

PAGE 94	PART #
Air Inlet Assembly (previously NV2006/7 and NV2006/7 CE)	03-045
Nylon Respirator Cape	NV2002
Extra Length Nylon Respirator Cape	NV2002XL
Leather Respirator Cape	NV2002L
Nylon Blast Jacket size XL	NV2002HB-XL
Nylon Blast Jacket size XXL	NV2002HB-XXL
Window Frame Gasket	NV2003
Visor Kit	NV2004
Latch Kit	NV2008
Helmet Liner size Medium	NV2009
Helmet Liner size Large	NV2009LH
Helmet Liner size Small	NV2009SH
Hygiene Kit (includes 2 alcohol wipes) size Medium	NV2009/10
Hygiene Kit (includes 2 alcohol wipes) size Large	NV2009/10LH

NOVA 2000® continued

PAGE 94	PART #
Hygiene Kit (includes 2 alcohol wipes) size Small	NV2009/10SH
Side Wings (pair) size Medium	NV2010
Side Wings (pair) size Large	NV2010LH
Side Wings (pair) size Small	NV2010SH
Side Wings (pair, for wearers with glasses) size Medium	NV2010G
Side Wings (pair, for wearers with glasses) size Large	NV2010GLH
Side Wings (pair, for wearers with glasses) size Small	NV2010GSH
Inner Bib	NV2012
Cape Cover Band	NV2013
Tear-off Lens (pk 50)	NV2017
Inner Lens (pk 10)	NV2018
Tinted Inner Lens (pk 10)	NV2018-T
Supplied Air Breathing Tube (for Nova 2000®) (previously NV2021)	NV2021B
Outer Lens 0.05mm thick (pk 50)	NV2031
Outer Lens 0.04mm thick (pk 50)	NV2031-015
Velstuds (pk 6)	NV2038
Domes (8 sets)	NV2041
Hand Strap	NV2042

NOVA 2000® TALK™

PAGE 101	PART #
Chest Harness	09-814
Nova 2000® Talk™ Upgrade Kit	09-900
Side Wings (pair, without Headset)	09-912
Push to Talk Button	09-913
R-TEX High Noise Headset (includes PTT)	09-916
Motorola Connection Cable (two-pin)	09-930
Motorola Connection Cable (multi-pin)	09-931
Motorola Connection Cable (multi-pin)	09-932
Kenwood Connection Cable (two-pin)	09-933
Motorola Connection Cable (multi-pin)	09-934

NOVA 1®

PAGE 110	PART #
Window Gasket Seal	02-807
Inner Lens (pk 10)	02-810
Tinted Inner Lens (pk 10)	02-810-T
Outer Lens (pk 50)	02-811-015
Tear-off Lens (pk 50)	02-816
PX4 Air® Breathing Tube (for Nova 1®)	04-837
Helmet Dome Holder	NV1-123

NOVA 1® continued

PAGE 110	PART #
Visor Kit	NV1-124
Visor Strap (pk 5)	NV1-125
Helmet Liner size Medium	NV2009
Helmet Liner size Large	NV2009LH
Helmet Liner size Small	NV2009SH
Hygiene Kit (includes 2 alcohol wipes) size Small	NV2009/10SH
Hygiene Kit (includes 2 alcohol wipes) size Medium	NV2009/10
Hygiene Kit (includes 2 alcohol wipes) size Large	NV2009/10LH
Side Wings (pair) size Small	NV2010SH
Side Wings (pair) size Medium	NV2010
Side Wings (pair) size Large	NV2010LH
Side Wings (pair, for wearers with glasses) size Small	NV2010GSH
Side Wings (pair, for wearers with glasses) size Medium	NV2010G
Side Wings (pair, for wearers with glasses) size Large	NV2010GLH
Inner Bib	NV2012
Supplied Air Breathing Tube (for Nova 1®)	NV2021B
Low Flow Indicator Assembly	NV2030
Velstuds (pk 6)	NV2038
Domes (8 sets)	NV2041
Air Inlet	NV3-729
Nylon Respirator Cape	NV3-750
Extra Length Nylon Respirator Cape	NV3-751
Leather Respirator Cape	NV3-752
Extra Length Leather Respirator Cape	NV3-753
Blast Jacket size XL	NV3-754
Blast Jacket size XXL	NV3-755
Cape Cover Band	NV3-759

NOVA 1® TALK™

PAGE 119	PART #
Chest Harness	09-814
Nova 1® Talk™ Upgrade Kit	09-900
Side Wings (pair, without Headset)	09-912
Push to Talk Button	09-913
R-TEX High Noise Headset (includes PTT)	09-916
Motorola Connection Cable (two-pin)	09-930
Motorola Connection Cable (multi-pin)	09-931
Motorola Connection Cable (multi-pin)	09-932
Kenwood Connection Cable (two-pin)	09-933
Motorola Connection Cable (multi-pin)	09-934

ASTRO™

PAGE 128	PART #
Visor Kit (includes Strap and Screws)	02-804
Visor Strap (pk 5)	02-805
Cleat and Screws	02-806
Window Gasket Seal	02-807
Suspension Clips (pk 4)	02-808
Head Harness (NIOSH approved)	02-809
Head Harness (CE approved)	02-809CE
Inner Lens (pk 10)	02-810
Tinted Inner Lens (pk 10)	02-810-T
Outer Lens (pk 50)	02-811-015
Cape Cover Band	02-812
Nylon Respirator Cape	02-813
Leather Respirator Cape	02-814
Tear-off Lens (pk 50)	02-816
Air Inlet Assembly (previously NV2006/7 and NV2006/7 CE)	03-045
Inner Bib	NV2012
Supplied Air Breathing Tube (for Astro™) (previously NV2021)	NV2021B
Low Flow Indicator Assembly	NV2030
Domes (8 sets)	NV2041
Hand Strap	NV2042

T-LINK®

PAGE 138	PART #
Supplied Air Breathing Tube (for T-Link®)	04-830
PX4 Air® Breathing Tube (for T-Link®)	04-835
Peel-off Lens (pk 50)	07-123
Jaw Assembly (includes 16-515)	16-514
Earmuff Bracket (pair, includes screws)	16-516
Side Padding System	16-520-S
Fit System (includes 16-520-S, 16-521, 16-522, 16-525, 16-526, 16-530, 16-531)	16-520-T
Impact Absorber	16-521
Comfort Pad	16-522
Head Harness System Bracket and Air Deflector	16-525
Brow Pad	16-526
Side Padding Frames	16-527
Foam Side Pads	16-528
Ratchet Assembly	16-530
Head Harness (includes 16-530)	16-531
T-Link® Hard Hat Assembly	17-010
T-Link® Bump Cap Assembly	17-110
Tychem® 2000 Hood	17-712

FULL PARTS INDEX

T-LINK® continued

PAGE 138	PART #
Tychem® 2000 Hood with Safety Lens	17-712-S
Tychem® 4000 Hood with Sealed Seams, Safety Lens	17-713-S
Lens Clips (pair)	17-512
T-Link® Cassette Lens (4 layers)	17-811
T-Link® Peel-off Lens (pk 25)	17-815
T-Link® Cassette Lens (7 layers)	17-817

T100™ SERIES

PAGE 150	PART #
PX4 Air® Breathing Tube (for T100™, includes 07-122)	04-836
Tychem® 2000 Hood	07-110
Head Harness Mounting Clips (pk 2)	07-121
Hose Clamp (Single Bond Nylon, 1-13/32)	07-122
Peel-off Lens (pk 50)	07-123
Head Suspension	07-920
Brow Pad (for 07-920, pk 5)	07-924
Chin Strap (for 07-920 and 07-721)	07-926
Supplied Air Breathing Tube (for T100™, includes 07-122)	NV2021F

T150™ SERIES

PAGE 158	PART #
Supplied Air Breathing Tube (for T150™)	03-031
Swivel Air Fitting Elbow	03-032
Visor and Rubber Face Seal	11-910
Inner Face Seal	11-911
Inhalation Valves	11-912
Clamping Band	11-913
Visor and Valves	11-914
TPR Face Seal	11-916
Tear-off Lens (pk 50)	11-924
Comfort Nylon Head Suspension	11-934
Breathing Tube Bracket	11-948

PX4 AIR® PAPER

PAGE 168	PART #
Fan Housing	03-910
Filter Door	03-921
Door Cover	03-922
Door Latch	03-923
Belt Loops (pair)	03-924
OV Housing Cover	03-929
Complete Charger Kit - US	03-950
Complete Charger Kit - AU/NZ	03-950-AU
Complete Charger Kit - EU	03-950-EU

PX4 AIR® PAPER continued

PAGE 168	PART #
Complete Charger Kit - UK	03-950-UK
Battery Charger	03-951
24 Volt Power Supply Unit (includes Power Cable)	03-952
Battery	03-955
Belt Supports (pair)	03-965
Pre-filter (pk 10)	03-981
Spark Arrestor	03-982
P100 Filter Cartridge	03-985
OV Pre-filter (pk 10)	03-991
OV Spark Arrestor	03-992
OV Cartridge	03-995
Flow Meter	04-091
PX4 Air® Breathing Tube (for Z-Link®, T-Link®)	04-835
PX4 Air® Breathing Tube (for T100™, Z100™)	04-836
PX4 Air® Breathing Tube (for Z4®)	04-837
PX4 Air® Breathing Tube (for Z3™)	04-839
2" Belt with Nylon Buckle	07-765
2" NOMEX® Belt with Acetal Buckle	07-765-FR
Power Cable - US	09-021
Power Cable - AU/NZ	09-021-AU
Power Cable - EU	09-021-EU
Power Cable - UK	09-021-UK

GX4® GAS MONITOR

PAGE 178	PART #
Aluminum Wall Bracket	08-231
Gas Sensor Cartridges - Carbon Monoxide 10ppm	08-420-01
Gas Sensor Cartridges - Carbon Monoxide 5ppm	08-420-02
Gas Sensor Cartridges - Hydrogen Sulfide 10ppm	08-420-03
Gas Sensor Cartridges - Oxygen 19.5% - 23%	08-420-04
Blank Sensor Case	08-420
Sensor Manifold Tube	08-422
Heavy Duty Field Case	08-424
Mounting Bracket (pair)	08-425
Air Supply Hose and One Touch Connector	08-428
M5 Inlet Filter, Sintered Brass	08-429
Power Adapter Pack - US	08-430
Power Adapter Pack - AS/NZ	08-430-AU
Power Adapter Pack - UK	08-430-UK
Power Adapter Pack - EU	08-430-EU
12 Volt Cable with Battery Clips	08-431
Auxiliary Cable 50' with Bare End	08-434
Auxiliary Strobe Light with 50' Cable	08-435
Auxiliary Strobe and Alarm Tower with 50' Cable	08-436
Calibration Adapter	08-450

GX4® GAS MONITOR continued

PAGE 178	PART #
Calibration Flow Regulator 1.5 SLPM (includes 08-450, for Zero Air and CO gas bottles)	08-451
Calibration Flow Regulator 1.5 SLPM (includes 08-450, for H ₂ S gas bottles)	08-452
Zero Air	08-460
CO 20ppm in Air	08-461
H ₂ S 20ppm in Nitrogen	08-462
External Flow Regulator	08-470
External Flow Regulator with RZ Fittings	08-470-RZ
Power Cable - US	09-021
Power Cable - AU/NZ	09-021-AU
Power Cable - UK	09-021-UK
Power Cable - EU	09-021-EU

RADEX® AIRLINE FILTER

PAGE 190	PART #
1/4" Coupler 3/8" MNPT with RZ Fitting (to fit 04-965 Manifold)	03-053-CM-RZ
1/4" Coupler 3/8" FNPT	04-911
3/8" Brass Tee	04-912
3/8" Brass Cap	04-913
Pressure Regulator	04-914
Pressure Gauge	04-915
Pressure Relief Valve (150 psi)	04-916
3/8" Brass Nipple	04-917
Filter Lid (for 04-900)	04-918
O-ring (set of 2)	04-919
Bolt, Nut, Washer (set of 4)	04-920
Brass Drain Tap	04-922
Base Mount	04-923
Auto Drain Unit	04-924
Micro Mist Filter 1/2"	04-925
1" x 1/2" Reducing Nipple	04-926
Mainline Pre-filter	04-927
Brass Elbow	04-928
Filter Element (for 04-927 Mainline Pre-filter)	04-929
Micro Mist Element (for 04-925 Micro Mist Filter)	04-930
Auto Drain Assembly (for 04-924 Auto Drain Unit)	04-931
Parts Bag for Radex (04-900)	04-932
1/2" NPT Hex Connector	04-952
Six Man Upgrade Kit	04-960
Six Outlet Filter Lid	04-961
Super High Flow Regulator (includes Gauge 04-915)	04-962
1/4" Coupler 3/8" MNPT (to fit 04-965 Manifold)	04-964
Six Outlet Manifold	04-965

RADEX® AIRLINE FILTER continued

PAGE 190	PART #
1" NPT Hex Connector	04-966
Ambient Air Pump (one person)	06-100
Replacement Filter Cartridge (generic)	AFC100
Replacement Radex® Filter Cartridge	APF3100
Inlet Filter Element	9700-01
Exhaust Filter Element	9700-02
Pressure Relief Valve	9700-03
Pressure Gauge	9700-04
Inlet Filter Assembly (includes 9700-01)	9700-08
Exhaust Filter Canister	9700-15
1/2" Hansen Coupler	9700-72AD

AIR SUPPLY

PAGE 200	PART #
Quick Release Coupler 1/4" Female Thread (CE approved)	03-022-CF
Quick Release Schrader Coupler 1/4" Female Thread	03-042-CF
Quick Release Schrader Tail 1/4" Female Thread	03-042-PF
Quick Release Coupler 1/4" Female Thread with RZ Fitting	03-052-CF-RZ
25' Breathing Air Supply Hose 3/8" Diameter with RZ Fittings	04-352-25-RZ
25' Breathing Air Supply Hose 3/8" Diameter (CE approved)	04-322-25
50' Breathing Air Supply Hose 3/8" Diameter (CE approved)	04-322-50
100' Breathing Air Supply Hose 3/8" Diameter (CE approved)	04-322-100
25' Breathing Air Supply Hose 3/8" Diameter with RZ Fittings	04-352-25-RZ
50' Breathing Air Supply Hose 3/8" Diameter with RZ Fittings	04-352-50-RZ
100' Breathing Air Supply Hose 3/8" Diameter with RZ Fittings	04-352-100-RZ
1/2" Hansen Coupler	9700-72AD
Quick Release Coupler 1/4" Female Thread	NV2025
100' Breathing Air Supply Hose 3/8" Diameter (includes Quick Release Fittings)	NV2027
50' Breathing Air Supply Hose 3/8" Diameter (includes Quick Release Fittings)	NV2029
50' Breathing Air Supply Hose 1/2" Diameter (includes Quick Release Fittings)	NV2035
100' Breathing Air Supply Hose 1/2" Diameter (includes Quick Release Fittings)	NV2036

FULL PARTS INDEX

C40™ CLIMATE CONTROL DEVICE

PAGE 208	PART #
1/4" Plug to 1/4" NPT Male Swivel	03-012-PMS
1/4" Safety Plug to 1/4" NPT Male Swivel	03-022-PMS
1/4" Male Thread RZ Coupler Swivel Plug	03-052-PMS-RZ
U Tube Assembly	03-510
Bottom Case	03-514
Top Case Assembly	03-521
Exhaust Assembly	03-522
Silencer Assembly	03-526
Inlet Collar	03-536
Silencers (pair)	03-537
Belt Loop	03-538
2" Belt with Nylon Buckle	07-765
2" NOMEX® Belt with Acetal Buckle	07-765-FR

FLOW CONTROL

PAGE 214	PART #
Quick Release Tail 1/4" Male Thread (previously 4000-06)	03-012-PM
Schrader Plug to 1/4" NPT Male Thread	03-042-PM
Quick Release Tail 1/4" Male Thread with RZ Fitting	03-052-PM-RZ
Constant Flow Valve Assembly (NIOSH approved)	03-101
Constant Flow Valve Assembly (CE approved)	03-102
Constant Flow Valve - Low Pressure	03-106
Adapter 1/4" RPB® Plug to 3/8" NPT Male Thread	03-111
Cold Air Tube Assembly (NIOSH approved)	4000-01
Cold Air Tube Assembly (CE approved, includes Temperature Shield and Swivel Connector)	4000-01CE
Cold Air Tube Assembly with GHT Threads	4000-02-GHT
Top Thread Cap BSP Thread (for 4000-01)	4000-03
Top Thread Cap GHT Thread (for 4000-20)	4000-03GHT
Cold Air Spinner	4000-04
Cool Air Tube Body	4000-05B
Hot Air Tube Body	4000-05R
Breaker	4000-07
Regulator Body	4000-08
Spindle and Knob	4000-09
Locking Screw	4000-10
Regulator Assembly	4000-11
Temperature Shield	4000-12
Hot Air Spinner	4000-13
Flow Reducer	4000-14
Outlet Valve	4000-15
Silencer Disc	4000-16
Silencer Disc - Brass	4000-16B
Retainer Nut	4000-17

FLOW CONTROL continued

PAGE 214	PART #
Outlet Valve Complete Assembly	4000-18
Outlet Valve (for 4000-40)	4000-38
Hot Air Tube Assembly (NIOSH approved)	4000-20
Hot Air Tube Assembly (CE approved)	4000-20CE
Silenced Cool Air Tube Assembly	4000-40
Flow Control Valve (NIOSH approved)	NV2016
Flow Control Valve (CE approved)	NV2016CE
Belt Complete with Buckles	NV2022
Adapter 1/2" Low Pressure Plug to 3/8" NPT Male Thread	NV2034

BLAST SUIT

PAGE 224	PART #
Blast Suit size Small	07-755-S
Blast Suit size Medium	07-755-M
Blast Suit size Large	07-755-L
Blast Suit size XL	07-755-XL
Blast Suit size XXL	07-755-XXL
Blast Suit size XXXL	07-755-XXXL
Blast Suit size XXXXL	07-755-XXXXL

SAFETY ESSENTIALS

PAGE 228	PART #
Do-Rag	05-613
Head Sock	05-601
Leather Blasting Gloves	07-701
Knee Pads (pair)	07-761
Safety Glasses - Clear	18-221-C
Safety Glasses - Smoked	18-221-S
Plus Safety Glasses - Clear	18-241-C
Plus Safety Glasses - Smoked	18-241-S
Ultra Safety Glasses - Clear	18-261-C
Ultra Safety Glasses - Smoked	18-261-S
S100™ Ear Plugs (200 pairs)	18-322
Earmuffs (NRR 28)	18-513

1-866-494-4599 | rpbsafety.com



[@rpbsafety](https://www.facebook.com/rpbsafety)



[@rpbsafety](https://www.instagram.com/rpbsafety)



search 'rpbsafety'



[youtube.com/rpbsafety](https://www.youtube.com/rpbsafety)