



## SUCTION (S) SERIES BLAST CABINETS

# **TABLE OF CONTENTS**

Important Notice	Page 3
Introduction & Important Safety Instructions	Page 4
Basic Principles	Page 5
Set-Up Requirements	Page 5 & 6
Common Media Types	Page 6
Cabinet Installation - S3636-6FH, S3636-6FH & S4836-6FH	Page 7
Cabinet Installation - S3636-62C & S4836-62C	Page 8
Cabinet Installation - S4848-9FH, S6036-9FH & S6048-9FH	Page 9
Cabinet Installation - S4848-92C, S6036-92C & S6048-92C	Page 10
S Series Cabinet Operation	Page 11
S Series Cabinet Maintenance	Page 11 & 12
S Series Suction Gun Adjustment	Page 12
S Series Air Flow Schematic	Page 13
S Series Cabinet Parts	Page 14
S Series Cabinet Parts cont'd	Page 15
S Series Suction Gun Breakdown	Page 16
S Series 150 CFM Dust Collector	Page 17
S Series Lighting Schematic with Ballasts	Page 18
S Series Lighting Schematic <u>without</u> Ballasts	Page 19
S Series Trouble Shooting	Page 20
S Series Operational Tips	Page 20
CSA Certificate of Compliance	Page 21
Warranty Coverage	Page 22





## **IMPORTANT NOTICE**

---

TO DISTRIBUTORS, PURCHASERS AND END USERS OF MOD-U-BLAST PRODUCTS

The information provided described and illustrated in this material is intended for experienced, knowledgeable users of abrasive blasting equipment and supplies (products).

The products described in this material may be combined as determined solely by the user in a variety of ways and purposes. However no representations are made as to intended use, performance standards, engineering suitability, safe practices or compliance with government regulations and laws that apply to these products, products of others, or a combination of various products chosen by the user or others. It is the responsibility of the users of these products, products of third parties, and a combination of various products, to exercise caution and familiarize themselves with all applicable laws, government regulations and safety requirements.

Nor are representations made or intended as to the useful life, maintenance cycles, efficiency or performance of the referenced products of any combination of products. This material must not be used for estimating purposes. Production rates, labour performance or surface finishes are the sole responsibility of the user based on the user's expertise, experience and knowledge of industry variables.

It is the responsibility of the user to insure that proper and comprehensive training of operators has been performed and all environmental and safety precautions observed.

Mod-U-Blast Inc. provides a variety of excellent products to the surface preparation industry, and we are confident that all proficient users, operators and contractors in this industry will continue to use our products in a safe and knowledgeable manner.

***Before using this product, read all instructions, literature, labels, specifications and warnings sent with and affixed to the unit.***

If operation of the unit is unclear after reading this manual, contact your supervisor for instructions. It is the responsibility of the employer to read the following instructions to users of this equipment. Periodic inspection at the work site should be made by supervisory personnel to ensure the blast machine is being properly used and maintained. A copy of this owner's manual must be kept with the blast machine and readily accessible to the blast machine operators at all times.

## **INTRODUCTION**

This manual provides important information concerning the Mod-U-Blast Suction Blast cabinet to ensure safe use of the equipment.



Before attempting to use this cabinet, please read these instructions for this Suction Blast machine. This instruction manual should be kept in the pouch on the back of the cabinet.

**NOTE:** Attempting to operate this equipment without reading this manual will likely cause the equipment to fail, injury and/or may void the warranty.

## **IMPORTANT SAFETY INSTRUCTIONS**



If you feel the equipment has been damaged or is in an unsafe condition, inform your supervisor and wait until the issue is resolved before using the equipment. If necessary, contact the manufacturer or an authorized representative in order to repair the damage.

### **IMPORTANT SAFETY INSTRUCTIONS!**



**WARNING:** When using this Suction Blast Cabinet basic precautions should always be followed, including the following:

1. Read all instructions before using this equipment.
2. This cabinet is meant for indoor use only.
3. Know how to stop the cabinet and release pressures quickly. Be familiar with all the controls.
4. Stay alert - watch what you are doing.
5. Never point the blast nozzle at the viewing window.
6. Do not disconnect air hoses while the system is under pressure.
7. Do not disable the safety door interlock system as this may cause unintentional blasting and injury.
8. When servicing the cabinet, disconnect and lock out the electrical & air supply.



**WARNING:** Check the power supply cords of this equipment at regular intervals for damage. If the power supply cords are found to be damaged, contact your supervisor and do not operate the machine until the repairs are made.



**WARNING:** Do NOT use this Suction Blast Cabinet outdoors. (Indoor use only)



**CAUTION:** Install and use this equipment in a ventilated area free of flammable liquids or gases.



**WARNING:** Use proper respirator and eye protection when servicing any component in this blast system.



**WARNING:** Over time, exposure to any dust could result in lung medical issues or death. Use a reverse pulse dust collector with HEPA filters if lead or other toxic materials are removed from items during the blasting process.

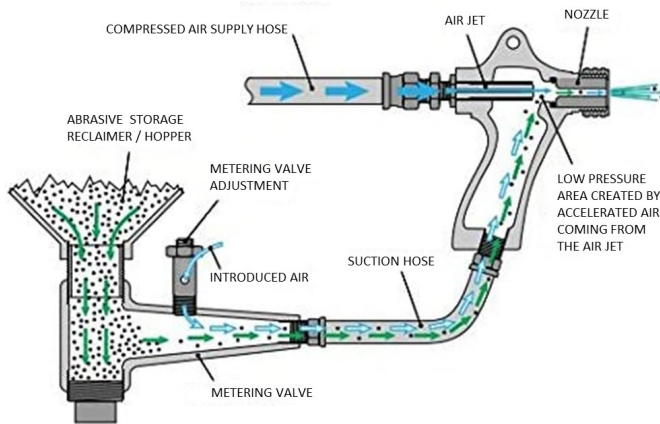
# Basic Principles

## Mod-U-Blast Suction Blast System Description

Our suction blast systems consists of these important components:

- Blast cabinet
- Suction Gun & Metering Valve
- Reclaimer
- Dust Collection (Dry Filter or Reverse Pulse)
- Hepa Filter (Optional with Reverse Pulse Dust Collector)

## How The Suction Blast System Works



When compressed air is metered into a suction-blast gun through its air jet, venturi effects generate a powerful vacuum (low pressure area) in the media delivery hose that draws media particles up to the gun, where they mix with the flow of air and are projected out through the nozzle onto the item being cleaned.

## Set-Up Requirements

### Location

**Before setting up your cabinet remember the following points:**

- The Mod-U-Blast suction blast cabinet requires a compressed air supply. **NOTE: The compressed air supply to this unit should be dry & oil free.**
- The cabinet needs a power supply (see next page for electrical information)
- This cabinet is designed to be used in a heated indoor location.
- Dust can escape from the cabinet while loading and unloading or while servicing the dust collector.

### Compressed Air Requirements

- The compressed air supply should be sized according to this table below.

### Compressed Air Line Size From Compressor To Blast Machine - In Inches

Pipe or Hose Length	VOLUME OF AIR IN CFM'S				
	25	30	35	40	50
25'	3/4	3/4	3/4	3/4	1
50'	3/4	3/4	3/4	1	1
75'	3/4	3/4	1	1	1
100'	3/4	3/4	1	1	1
150'	3/4	1	1	1	1

**NOTE: DO NOT USE QUICK DISCONNECT COUPLERS AS THEY RESTRICT AMOUNT OF CFM'S REQUIRED TO OPERATE THESE MACHINES PROPERLY**

# **Electrical Requirements**

- Cabinet LED lights are always 110 volt supply.
- **Single Phase Cabinets:** Plug cabinet into 110 volt supply - The fan rotation is set and checked at the factory. All 220 volt blower motors will have a separate wall plug.
- **Three Phase Cabinets:** Three phase blower motors require the power supply to be hard wired by a certified electrician and will require the addition of a motor starter (optional). The motor/fan must turn clockwise when viewed from the top of the motor.

# **Compressed Air Requirements**

## **Nozzle CFM Requirements**

NOZZLE NO.	NOZZLE HOLE SIZE (NEW)	CFM REQUIREMENTS @ 80 PSI
No. 3.5	1/8"	15
**No. 4	1/4"	21
No. 5	5/16"	32
No. 6	3/8"	47

\*\* Standard nozzle in S series cabinets. Nozzle CFM's listed above are with using a new nozzle - cfm numbers will increase as the nozzle becomes worn.

# **Common Media Types**

## **Glass Bead Ordering Information**

Stock No.	Description	Size
71003	#3 (20-30 mesh) glass bead	20 Kg
71004	#4 (30-40 mesh) glass bead	20 Kg
71005	#5 (40-50 mesh) glass bead	20 Kg
71005	#6 (50-70 mesh) glass bead	20 Kg
71007	#7 (60-80 mesh) glass bead	20 Kg

Stock No.	Description	Size
71008	#8 (70-100 mesh) glass bead	20 Kg
71010	#10 (100-170 mesh) glass bead	20 Kg
71011	#11 (120-200 mesh) glass bead	20 Kg
71013	#13 (170-325 mesh) glass bead	20 Kg
71100	MGA MANUS Glass Abrasive	20 Kg

## **Aluminum Oxide Ordering Information**

Stock No.	Description	Size
70080	80 grit Aluminum Oxide	50 lbs.
70100	100 grit Aluminum Oxide	50 lbs.
70120	120 grit Aluminum Oxide	50 lbs.

Stock No.	Description	Size
70180	180 grit Aluminum Oxide	50 lbs.
70220	220 grit Aluminum Oxide	50 lbs.

## **10X - EpiX Ordering Information**

Stock No.	Description	Size
KX1068	EpiX MP (70 to 90 Mesh)	50 lbs.

Stock No.	Description	Size
KX1078	EpiX LP (100 to 120 Mesh)	50 lbs.

**Other Medias** are available - please contact your Mod-U-Blast dealer for further information

## **S Series Cabinet Installation S3636-6FH, S3636-6FH & S4836-6FH**

Installations vary depending on the type of dust collector - refer to the serial tag for the model number.

### **Installation for cabinets with the reclaimer attached to cabinet and using a dry filter dust collector (sock filters)**

**NOTE:** Suction cabinets using a dry filter dust collector will have the exhaust motor mounted on top of the reclaimer

1. Remove all components from the pallets and/or packaging, and then refer to Fig. A, (below) for cabinet & dust collector preferred placement and flex hose connection. (see arrows)
2. When placing all components make sure to allow full access to the cabinet doors, reclaimer, dust collector hopper and for any future service needs.
3. Attach the flex hose from the reclaimer fan housing to the dry filter dust collector (flex hose supplied and located inside the dust collector).
4. Place the foot pedal at the front of the cabinet.
5. Minimum of 1/2" compressed air line will need to be attached (customer supplied) to the inlet side of the moisture separator mounted on the right front leg of the cabinet. (Refer to page 5 for proper air supply line if distance is a factor) **NOTE: DO NOT USE QUICK DISCONNECT COUPLERS - THEY WILL RESTRICT THE AIR FLOW REQUIRED.**
6. Plug in the cabinet lights via the 3 pronged, 110 volt plug attached to the light housing into the appropriate 110 volt wall receptacle.
7. Proceed to 'S Series Cabinet Operation'.

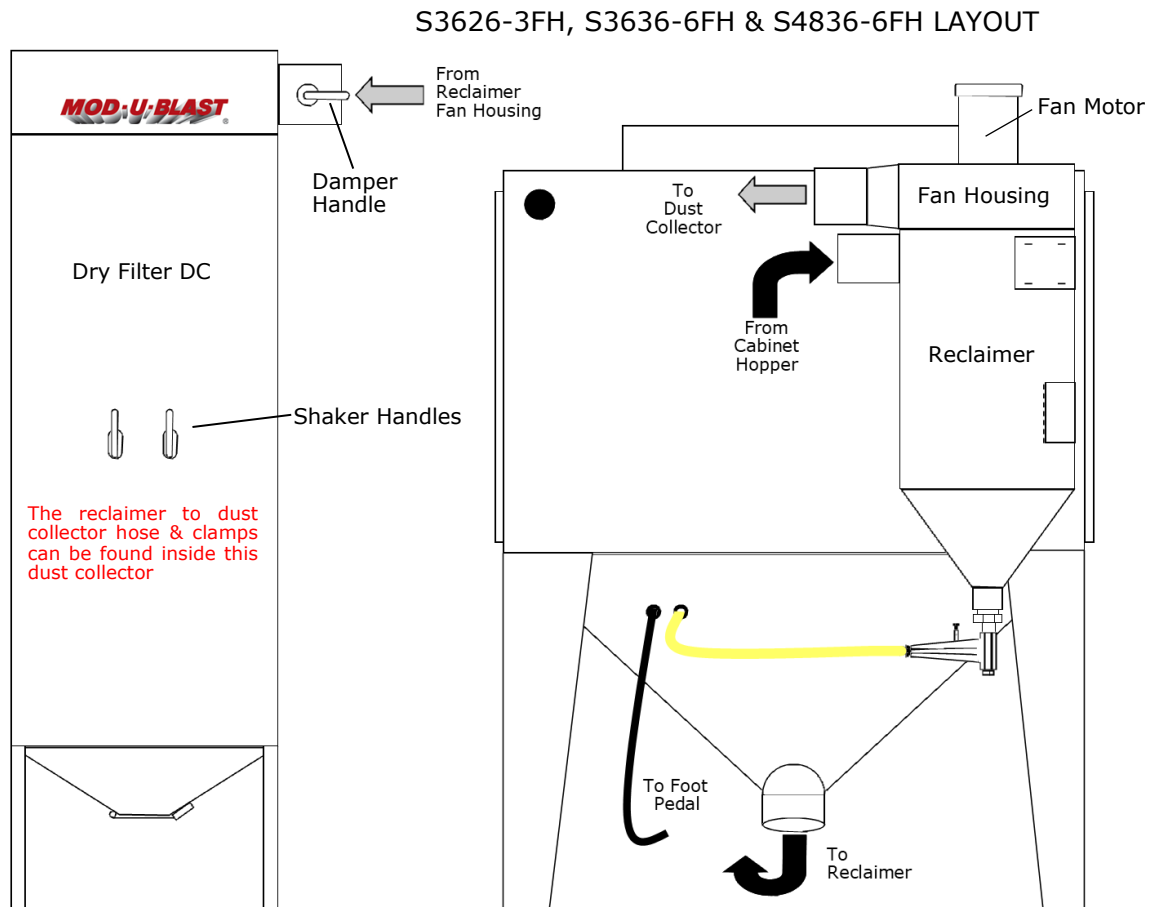


Fig. A



## **S Series Cabinet Installation S3636-62C & S4836-62C**

**Installation for cabinets with the reclaimer mounted on the back and using a reverse pulse dust collector.**

**NOTE: Suction cabinets using a reverse pulse dust collector will have the exhaust motor mounted on top of the dust collector.**

1. Remove all components from the pallets and/or packaging, and then refer to Fig. B, (below) for cabinet & dust collector preferred equipment placement and flex hose connection. (see arrows)
2. When placing all components be sure to allow full access to the cabinet doors, reclaimer, dust collector hopper and for any future service needs. (The cabinet and dust collector both come with lifting eyes - not shown)
3. Attach the flex hose from the top of the reclaimer to the side of the reverse pulse dust collector (flex hose supplied and located inside the cabinet).
4. Place the foot pedal at the front of the cabinet.
5. Minimum of 1/2" compressed air line will need to be attached (customer supplied) to the inlet side of the moisture separator mounted on the right front leg of the cabinet. (Refer to page 5 for proper air supply line if distance is a factor) **NOTE: DO NOT USE QUICK DISCONNECT COUPLERS - THEY WILL RESTRICT THE AIR FLOW REQUIRED.**
6. Attached to the light box on top of the cabinet are 2 wires - one plug female and one male. Plug the 3 pronged male plug into a 110v receptacle on the wall and plug the female connector together with the male plug from the motor on the reverse pulse dust collector. **NOTE: Reverse pulse dust collectors auto pulse has a male plug end that will also need to be plugged into a 110v receptacle. See DC manual for pulsing schedule.**
7. Proceed to 'S Series Cabinet Operation'.

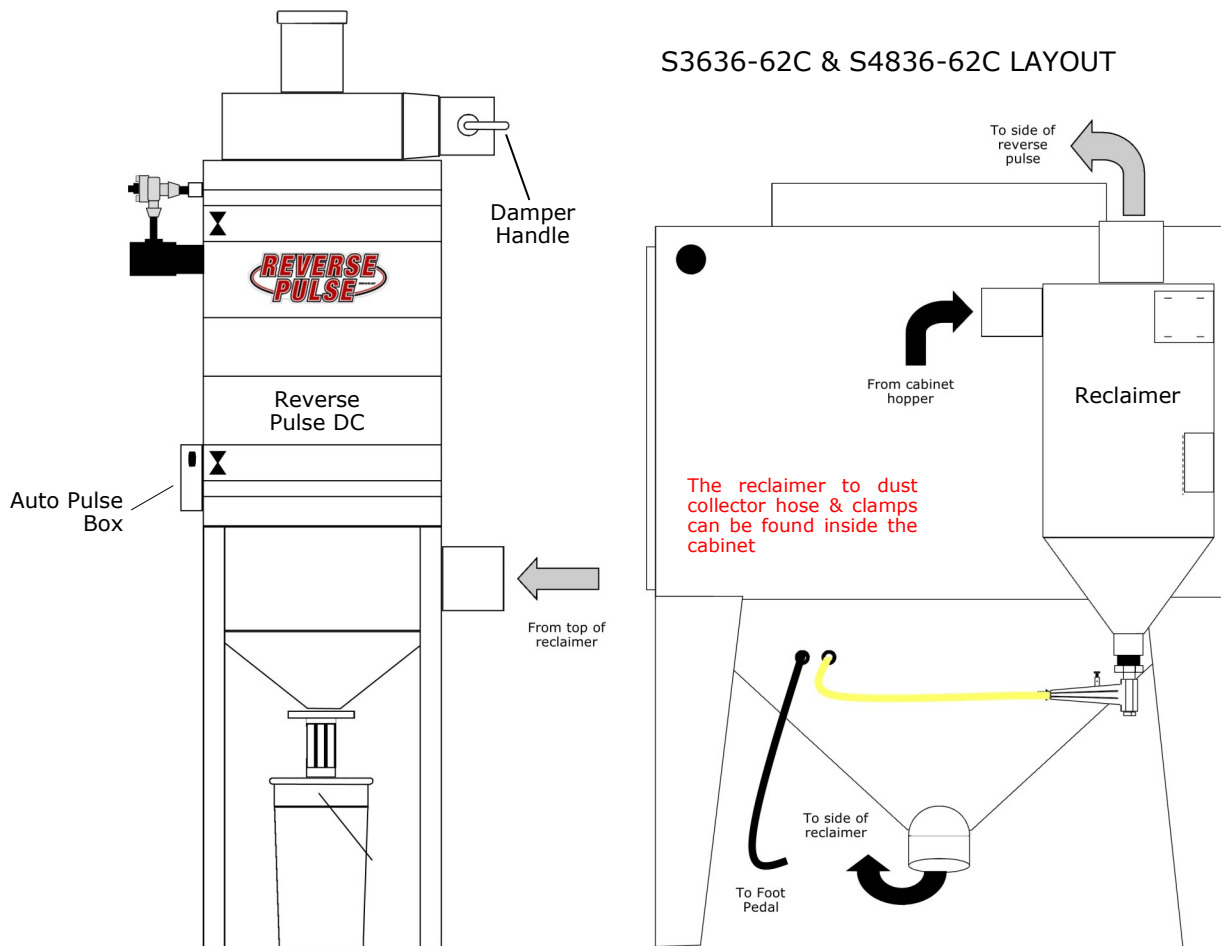


Fig. B



## **S Series Cabinet Installation S4848-9FH, S6036-9FH & S6048-9FH**

### Installation for cabinets with an externally mounted reclamer using a dry filter dust collector.

**NOTE:** Suction cabinets using a dry filter will have the exhaust fan mounted on top of the reclaimers.

1. Remove all components from the pallets and/or packaging, and then refer to Fig. C, (see below) for cabinet & dust collector preferred equipment placement and flex hose connection. (see arrows)
2. When placing all components make sure to allow full access to the cabinet doors, reclaimers, dust collector hopper and for any future service needs.
3. Attach the flex hose from the top of the reclaimers to the reverse pulse dust collector (flex hose supplied and located inside the cabinet).
4. Place the foot pedal at the front of the cabinet.
5. Minimum 1/2" compressed air line will need to be attached (customer supplied) to the inlet side of the moisture separator mounted on the right front leg of the cabinet. (Refer to page 5 for proper air supply line if distance is a factor) **NOTE: DO NOT USE QUICK DISCONNECT COUPLERS - THEY WILL RESTRICT THE AIR FLOW REQUIRED.**
6. Attached to the light box on top of the cabinet is 1 wire with plug for the cabinet lights. Plug the 3 pronged male plug into a 110v receptacle on the wall. The motor is a 2 hp unit and will need to be hard wired into a motor controller by an certified electrician.
7. Proceed to 'S Series Cabinet Operation'.

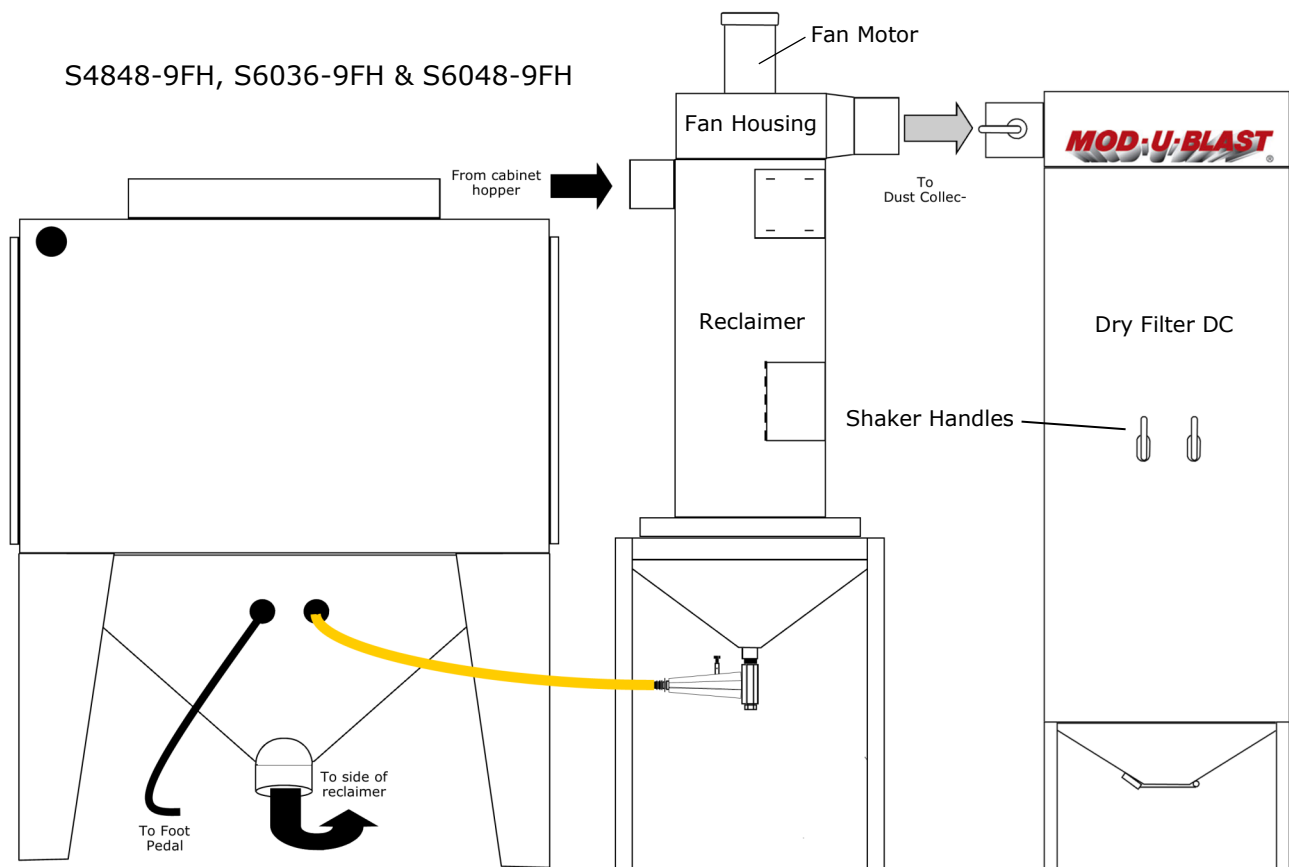


Fig. C

## **S Series Cabinet Installation S4848-92C, S6036-92C & S6048-92C**

### **Installation for cabinets with an externally mounted reclaimer using a reverse pulse dust collector.**

**NOTE: Suction cabinets using a reverse pulse dust collector will have the exhaust motor mounted on top of the dust collector.**

1. Remove all components from the pallets and/or packaging, and then refer to Fig. D, (see below) for cabinet & dust collector preferred equipment placement and flex hose connection. (see arrows)
2. When placing all components make sure to allow full access to the cabinet doors, reclaimer, dust collector hopper and for any future service needs.
3. Attach the flex hose from the top of the reclaimer to the reverse pulse dust collector (flex hose supplied and located inside the cabinet).
4. Place the foot pedal at the front of the cabinet.
5. Minimum 1/2" compressed air line will need to be attached (customer supplied) to the inlet side of the moisture separator mounted on the right front leg of the cabinet. (Refer to page 5 for proper air supply line if distance is a factor) **NOTE: DO NOT USE QUICK DISCONNECT COUPLERS - THEY WILL RESTRICT THE AIR FLOW REQUIRED.**
6. Attached to the light box on top of the cabinet is 1 wire with plug for the cabinet lights. Plug the 3 pronged male plug into a 110v receptacle on the wall. The motor is a 2 hp unit and will need to be hard wired into a motor controller by an certified electrician. **NOTE: Reverse pulse dust collectors auto pulse has a male plug end that will also need to be plugged into a 110v receptacle. See DC manual for pulsing schedule.**
7. Proceed to 'S Series Cabinet Operation'.

S4848-92C, S6036-62C & 6048-92C LAYOUT

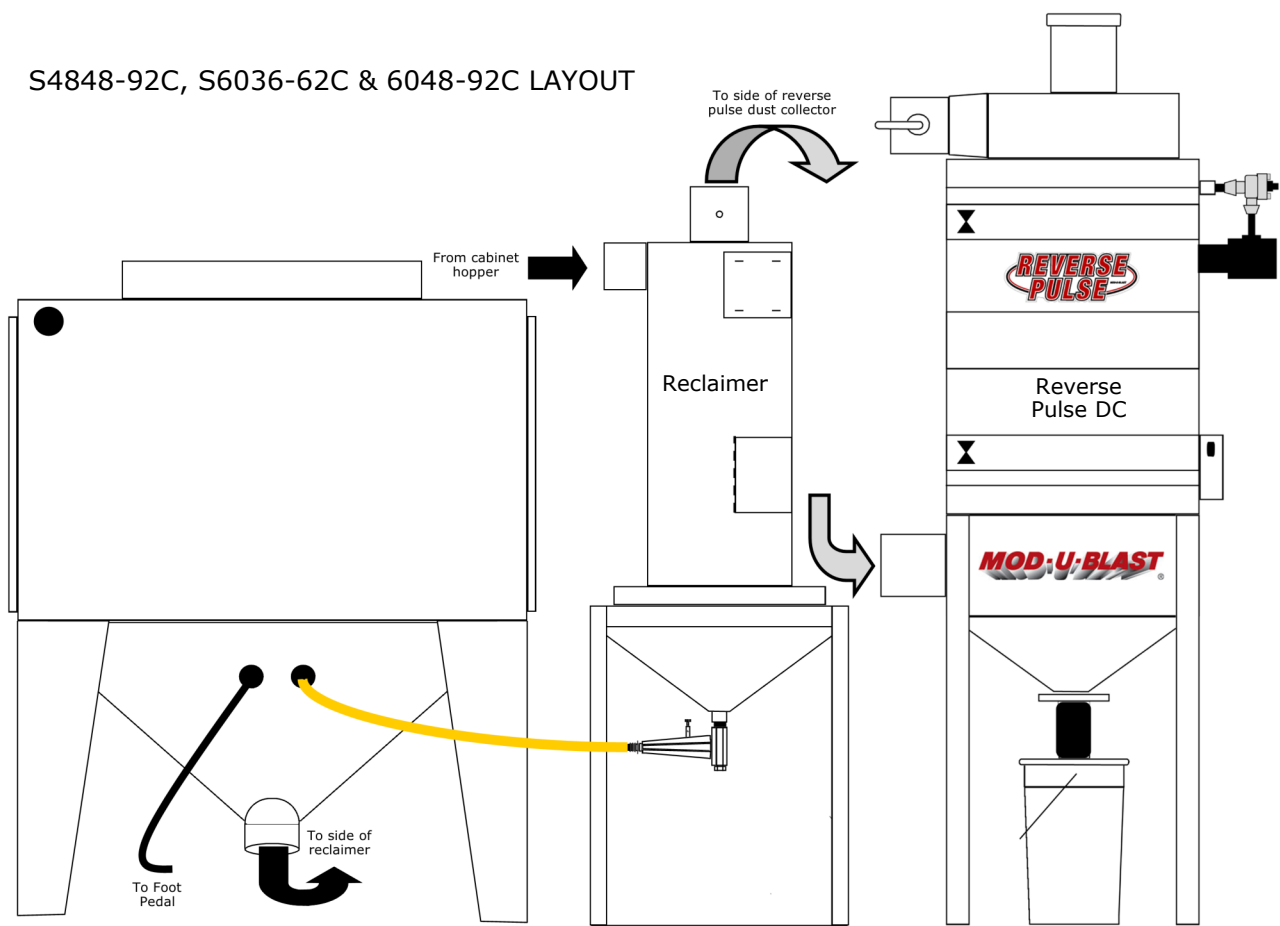


Fig. D

## **S SERIES CABINET OPERATION**

### **Loading the Media**

1. With the exhaust fan off, to add new media, open the swing door on side of the reclaimer and pour the media into the bottom of the reclaimer hopper approx. 3 inches below the reclaimer door. (900 & 1200 CFM units, fill the hopper under the reclaimer)
2. Close the door on the reclaimer.

**NOTE: DO NOT LOAD THE MEDIA DIRECTLY IN THROUGH THE CABINET DOORS, IF THIS IS DONE THE CABINET HOPPER HOSE WILL PLUG AND IT WILL HAVE TO BE REMOVED AND EMPTIED.**

### **Loading Parts to be Cleaned**

1. Load parts through either door on the cabinet
2. Parts need to be free of grease, oil, or water.
3. Close the door (s).

### **Preparation for Blasting**

1. Open the compressed air valve used to supply the cabinet.
2. Turn on the cabinet lights & exhaust fan.
3. Adjust the regulator to desired blast pressure. (pull knob up to unlock, adjust pressure and push down to lock).
4. The metering valve on the bottom of the reclaimer has been set at the factory for the most efficient blast stream. (Further adjustments may be required depending on the size of media being used)

### **Blasting Process**

1. Place hands into the gloves and grab the blast gun firmly.
2. Point the blast gun at the part to be cleaned.
3. Depress the foot pedal for the blasting to start.
4. Hold the nozzle end of the gun approximately 6" from the item to be cleaned. Point nozzle at a 45° angle towards the part and use smooth, even strokes for best results.

### **Finish Blasting**

1. To finish blasting, release pressure from the foot pedal and blasting will stop quickly.
2. Use the blow gun inside the cabinet to blow off the part (s) that were just cleaned and allow the dust to clear before opening the door & removing them from the cabinet.
3. Turn off the cabinet lights and the exhaust fan.

## **S SERIES CABINET & MAINTENANCE**

### **Maintenance Schedules**

#### **Daily Start-Up Procedure**

- Check air pressure and adjust to desired setting
- Correct any safety issues before blasting
- Report and / or fix any operational problems

#### **Daily Maintenance**

- Pulse or shake dust filters
- Empty dust collector
- Add required media (DO NOT OVERFILL)

# **S SERIES CABINET & MAINTENANCE Cont'd**

## **Maintenance Schedules**

### **Weekly Maintenance**

- Inspect gloves
- Inspect nozzle for wear
- Clean screen in reclaimer
- Check lights for proper operation
- Clean / Repair safety glass or protector
- Inspect clear media hose and air supply hoses for holes or weak spots.

### **Monthly Maintenance**

- Inspect air & media hoses for leaks or loose fittings
- Check for quick shutdown of the following:
  - Foot pedal on cabinet
  - Door safety switches

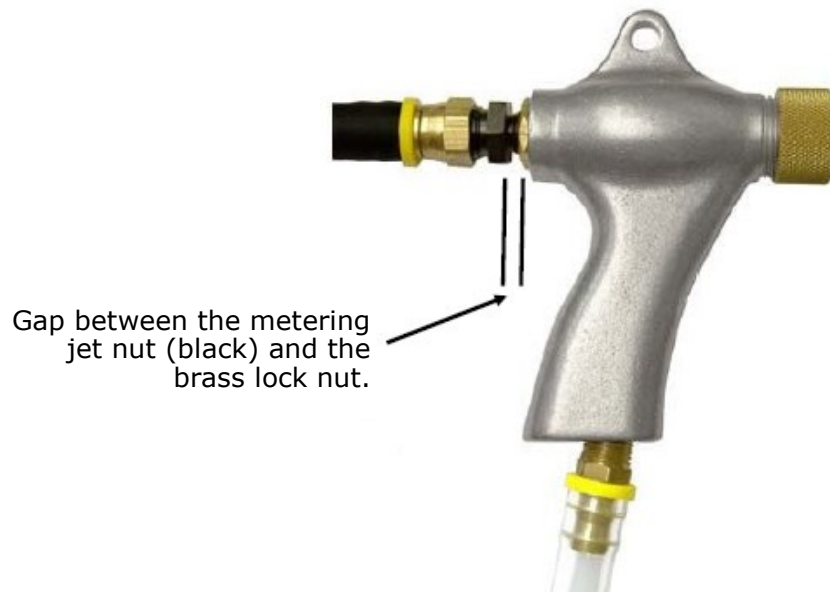
### **Six Month Maintenance**

- Check dust filters for cleanliness
- Inspect door seals
- Check for leaks in dust hoses
- Check for leaks in the cabinet

## **Suction Blast Gun**

After 10-12 hours of blasting time the nozzle should be checked. If it shows uneven wear it should be rotated a 1/4 turn every 10 hours of use. Replace the nozzle when it measures more than a 1/16th over its original size.

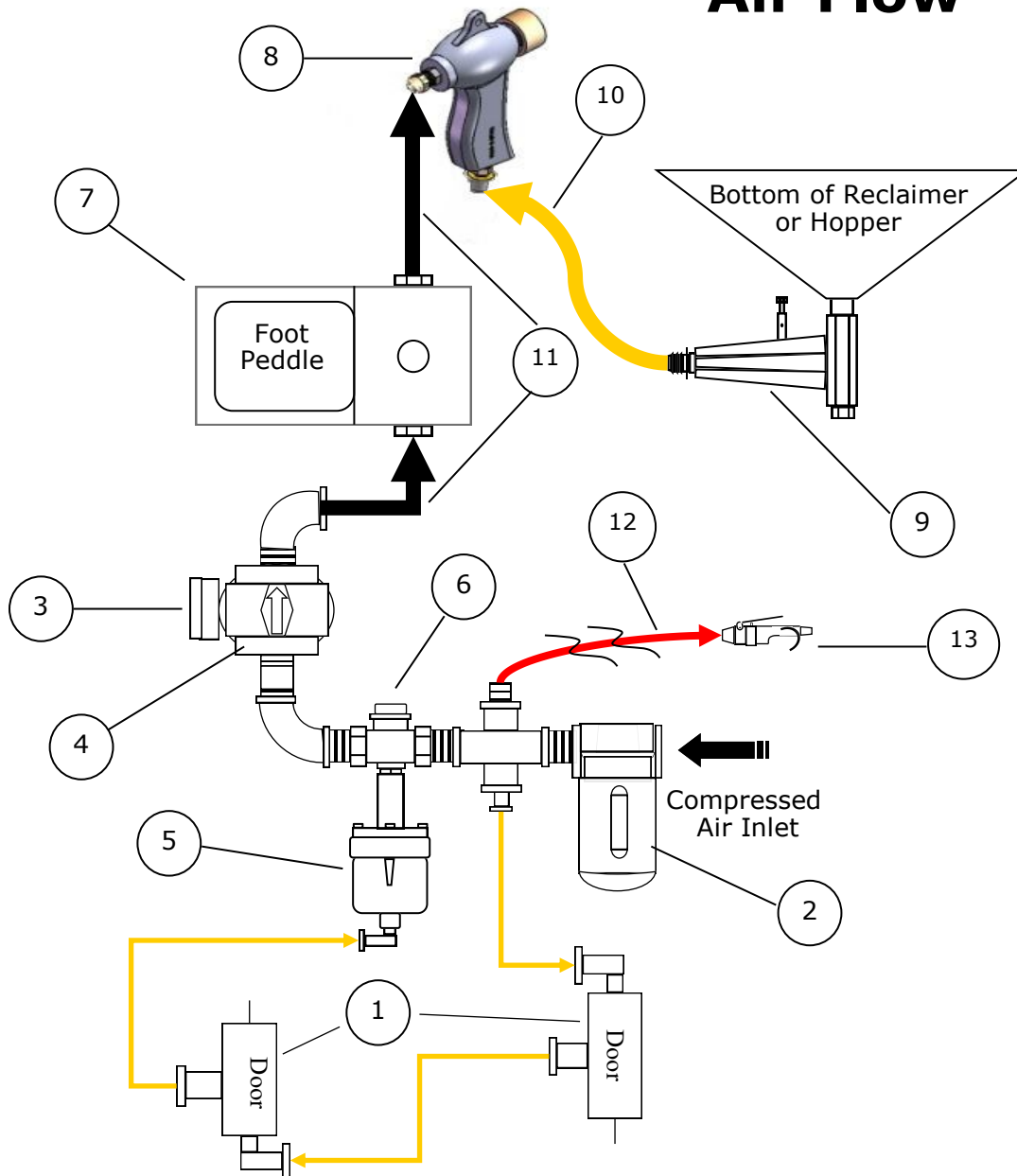
## **Suction Blast Gun Adjustment**



The adjustment for the #3.5 & #4 metering jet on the Mod-U-Blast suction gun start with a 3/16" gap as shown above. Use a 3/16" drill bit between the metering jet nut and the brass lock nut for ease of gapping. Minor adjustments may be required as needed due to different media sizes and conditions.

The adjustment for the #5 & #6 metering jet on the Mod-U-Blast suction gun start with a 5/16" gap as shown above. Use a 5/16" drill bit between the metering jet nut and the brass lock nut for ease of gapping. Minor adjustments may be required as needed due to different media sizes and conditions.

## S - Series Air Flow



No.	Part Number	Description	No.	Part Number	Description
1	12202	Door Switch	8	12301	#4 MUB Suction Gun
2	50-150	Moisture Filter	8	12302	#5 MUB Suction Gun
3	55415	Pressure Gauge	9	16025	Suction Metering Valve
4	50-3350	1/2" Regulator	10	12-MED	1/2" Clear Media Hose
5	16183	1/2" Safety Valve	11	12-PUSH	1/2" Air Hose
6	16178	1/2" Actuator	12	14-AIR	1/4" Air Line
7	16190M	Suction Foot Peddle	13	60-110P	Blow Gun

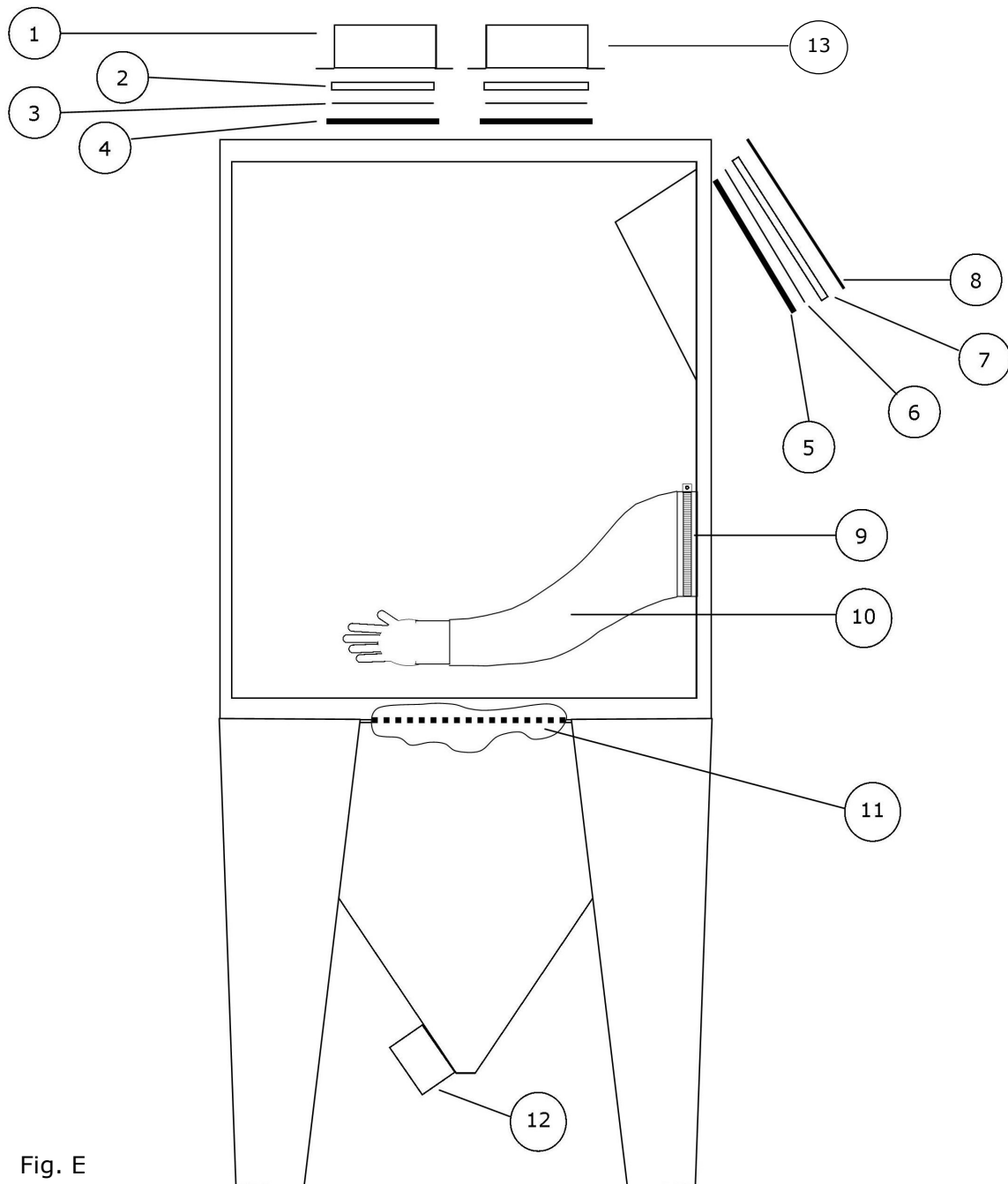


Fig. E

Item	Part Number	Description
1	ZLAMP B	LIGHT HOUSING
2	12215A	WINDOW
3	43518S	WINDOW PROTECTOR (12215A)
4	16540	TRIM LOK (5 FT)
5	16540	TRIM LOK (5 FT)
6	41117S	WINDOW PROTECTOR (12216)
7	12216	WINDOW
8	16053	WINDOW FRAME

Item	Part Number	Description
9	12535	GLOVE CLAMP
*10	15210	GLOVES (SET)
**10	15270	GLOVES (SET) with Wear Kit
*11	ZF4836X	11 GA. PERFORATED FLOORING
**11	ZF4836H	3 GA. PERFORATED FLOORING
12	ZPL6F	CABINET HOPPER FLANGE
13	ZLAMP X	MODUBLAST LIGHT HOUSING
-	16364	LED BULB (2 per housing)

NOTE: Item \*10 are medium duty gloves and \*\*10 are heavy duty gloves.

NOTE: Item \*11 is medium duty perforated flooring (mainly used with glass bead) & \*\*11 is heavy duty perforated flooring (used with aluminum oxide) Part numbers listed for item 11 are for model S4836. When calling for a new cabinet floor, please provide the model number found on the serial tag for us to get you the proper floor size.

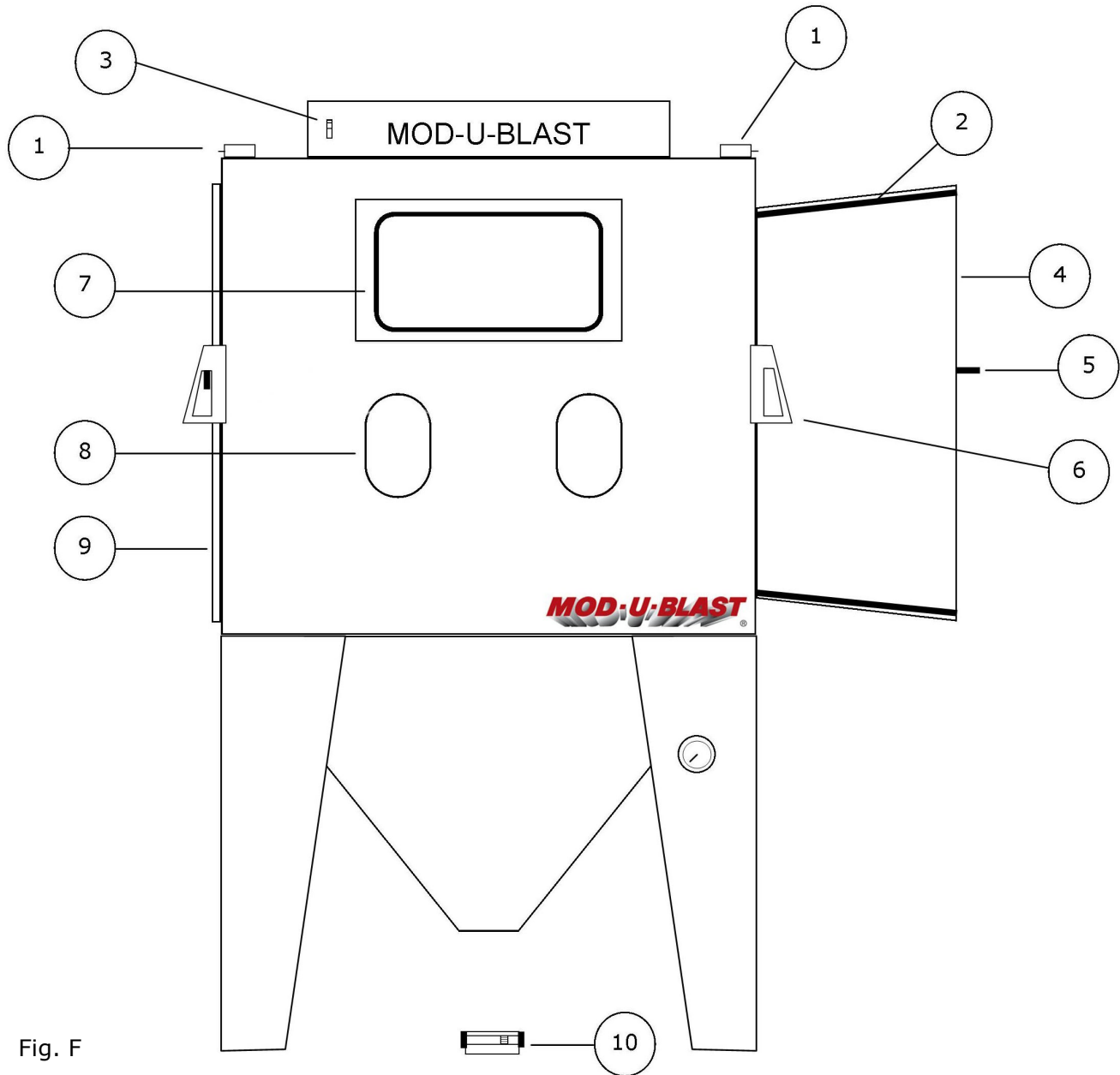


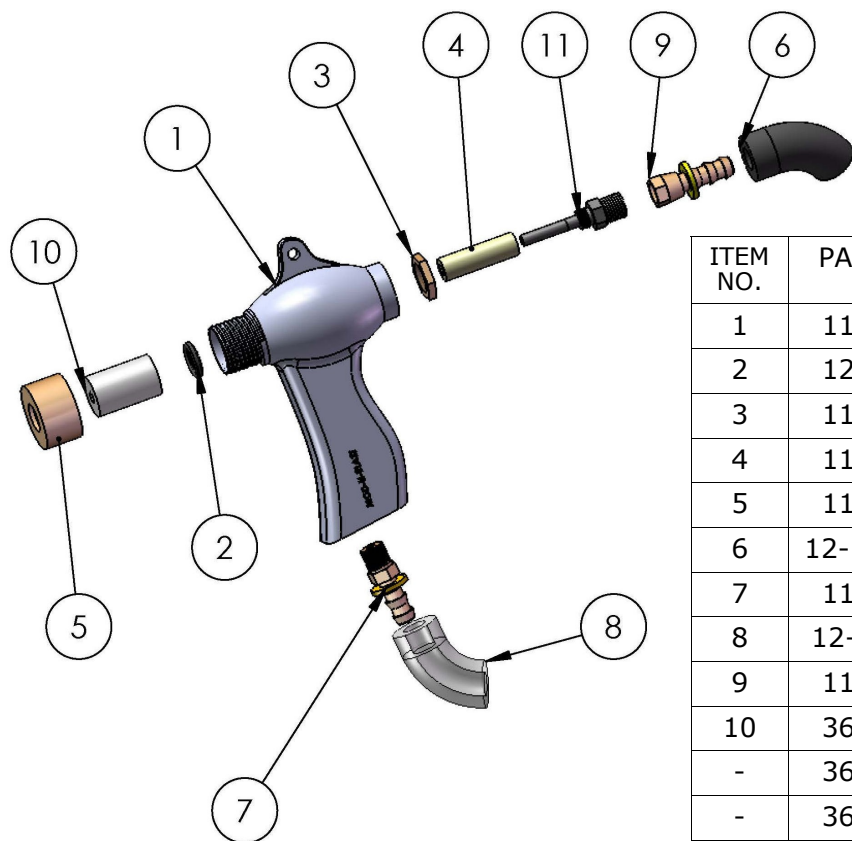
Fig. F

Item	Part Number	Description
1	12202	DOOR SAFETY SWITCH
2	12433-2	DOOR GASKET
3	16371	LIGHT SWITCH
4	ZDR36	RIGHT DOOR
5	Z-HANDLE	DOOR HANDLE

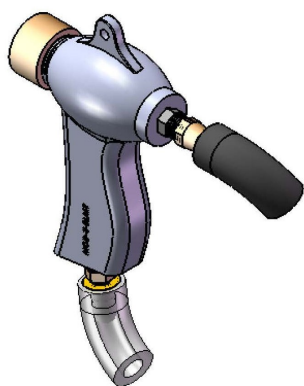
Item	Part Number	Description
6	Z-LATCH	DOOR LATCH
7	See Fig. E	VIEWING WINDOW
8	16542	GLOVE TRIM
9	ZDL36	LEFT DOOR
10	16190M	FOOT PEDAL

For Supplies and Parts Call - 1-800-661-3842





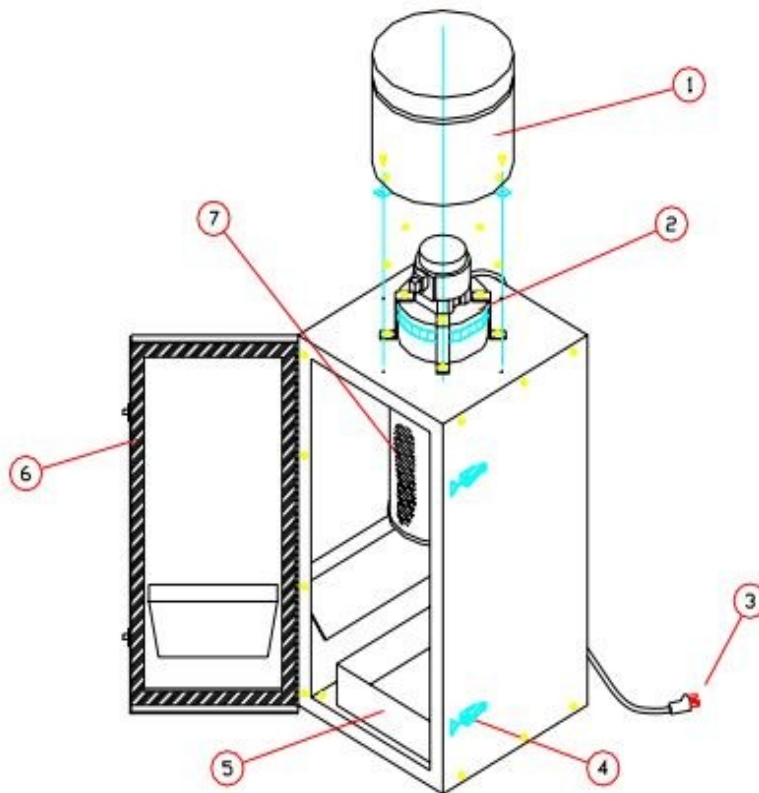
ITEM NO.	PART#	DESCRIPTION
1	11802	MUB Gun Body Only
2	12031	Nozzle O Ring
3	11913	Air Jet Hex Nut
4	11913	Air Jet Sleeve
5	11914	Nozzle Holder Brass Nut
6	12-PUSH	1/2" Media Hose
7	11724	3/8" Lock Barb Fitting Media Inlet
8	12-MED	1/2" Media Hose (Clear)
9	11723	3/8" Swivel Fitting Air Inlet
10	36664	#4 Ceramic Nozzle
-	36665	#5 Ceramic Nozzle
-	36666	#6 Ceramic Nozzle
-	35934	#4 Boron Nozzle
-	35935	#5 Boron Nozzle
-	35936	#6 Boron Nozzle
11	12341	#3.5 Air Jet
-	12342	#4 Air Jet
-	12343	#5 Air Jet
-	12344	#6 Air Jet



### COMPLETE GUN ASSEMBLIES

ITEM NO.	DESCRIPTION
12300	#3.5 Gun Assembly Ceramic
12301	#4 Gun Assembly Ceramic
12302	#5 Gun Assembly Ceramic
12303	#6 Gun Assembly Ceramic
12304	#7 Gun Assembly Ceramic
12301T	#4 Gun Assembly Tungsten Carbide
12302T	#5 Gun Assembly Tungsten Carbide
12303T	#6 Gun Assembly Tungsten Carbide
12302B	#5 Gun Assembly Boron Carbide
12303B	#6 Gun Assembly Boron Carbide

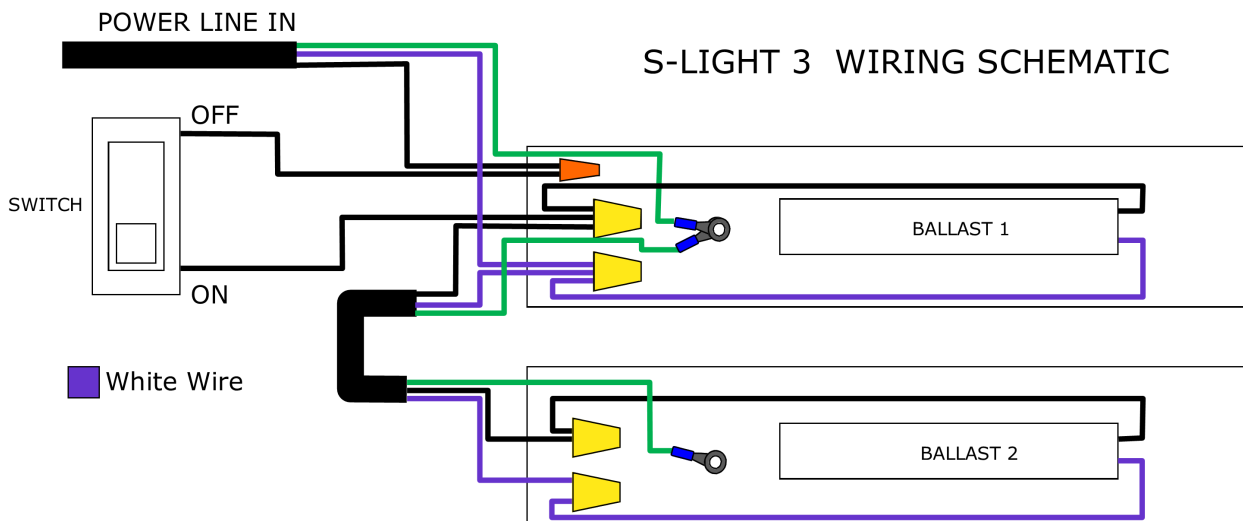
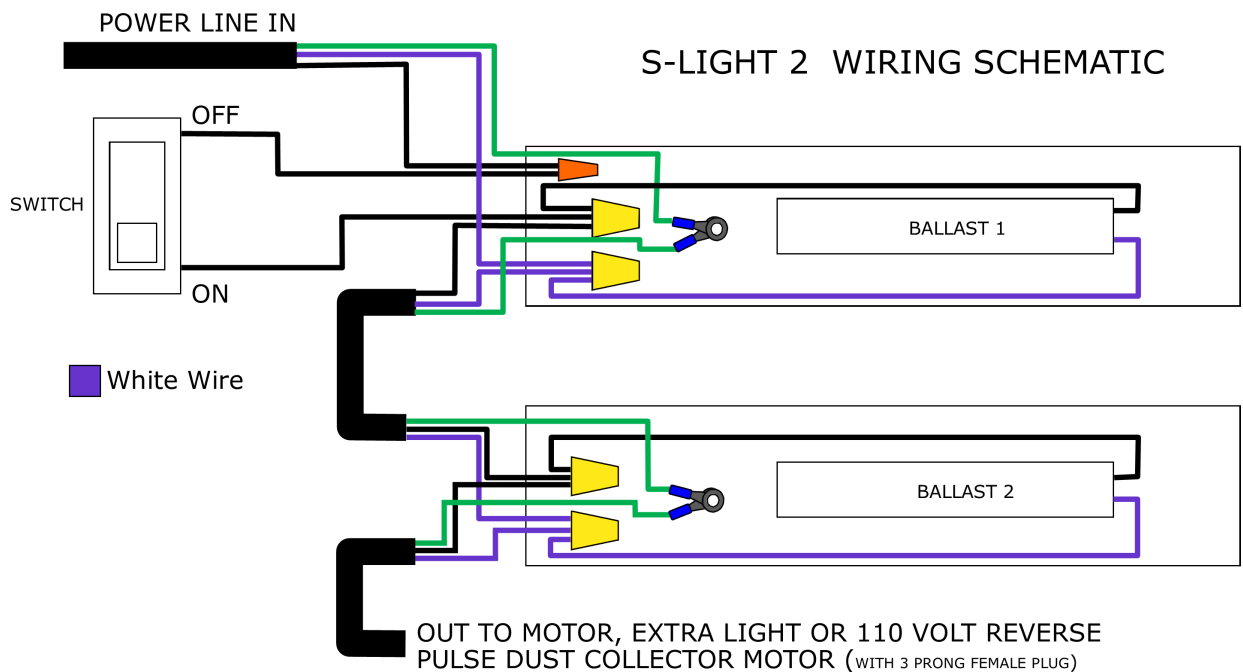
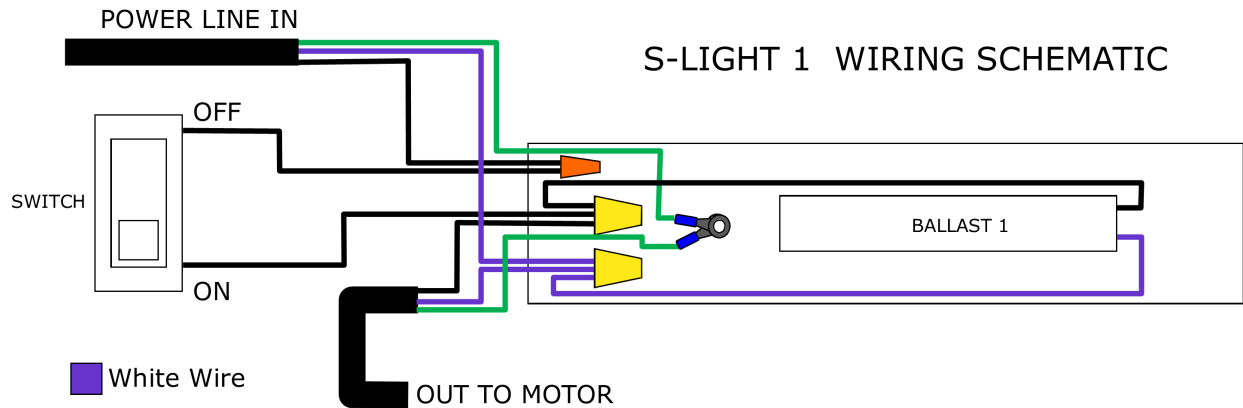
## S SERIES 150 CFM DUST COLLECTOR

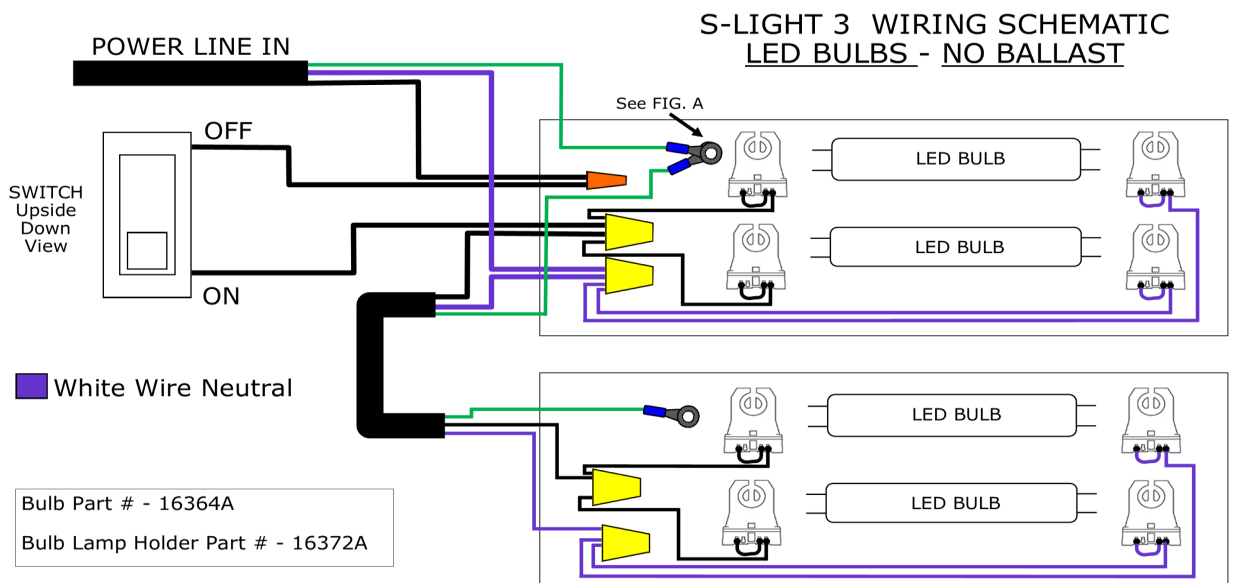
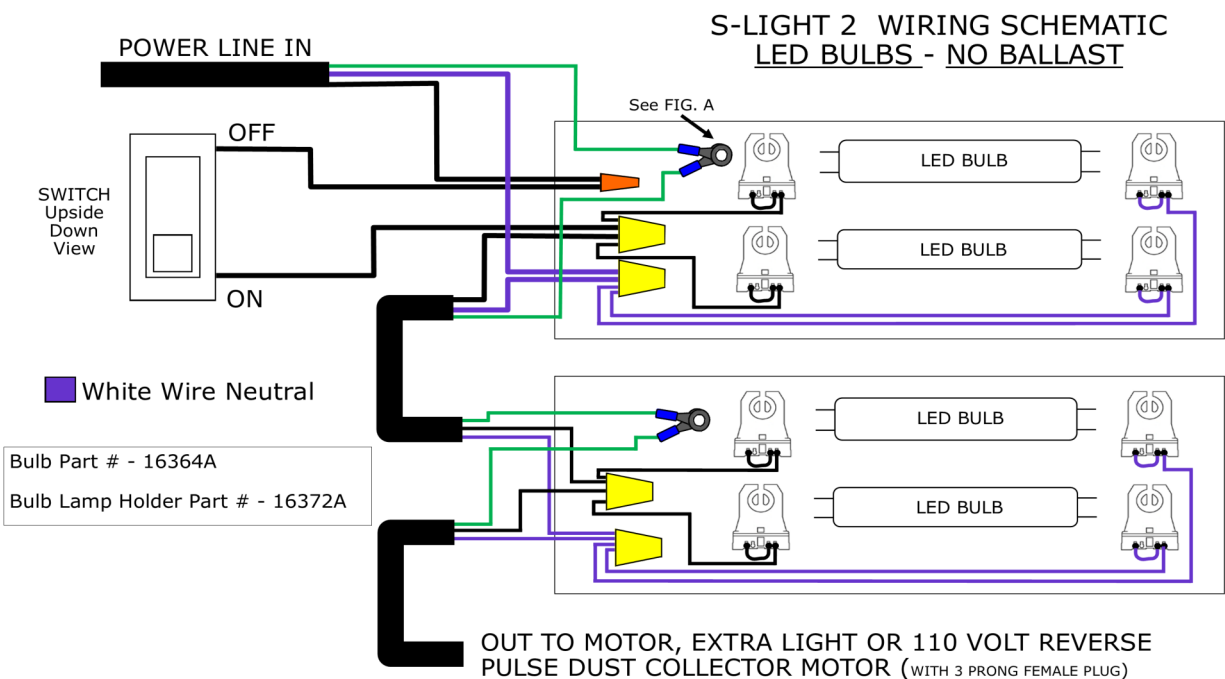
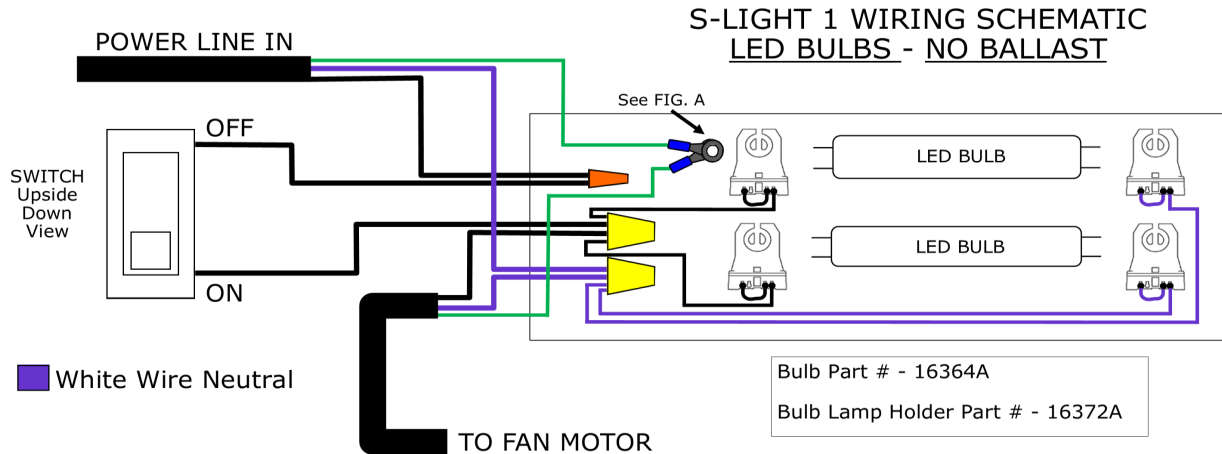


ITEM	PART #	DESCRIPTION
1	16564M	MOTOR COVER
2	16560	VACUUM MOTOR
3	16376A	3 WIRE ELECTRICAL CORD
4	Z-CATCH	ADJUSTABLE DOOR CATCH
5	16568	DUST PAN
6	12433-2	1" X 1/4" FOAM SEALER
7	16565	FILTER CARTRIDGE

Please Note: This Dust collector is used on suction cabinets with a 'DC' suffix. E.g. S3026-DC

**MOD-U-BLAST**®





## **S SERIES TROUBLESHOOTING**

### **POOR VISIBILITY:**

- Cabinet air inlets closed or covered. Open cabinet air inlets.
- Damper closed or partially closed on dust collector.
- Dirty Filter. Shake or pulse filters. If continues replace filters.
- Using media that is too fine or worn out.
- Nozzle pressure too high causing media to breakdown prematurely. Reduce regulator pressure.
- Dust collector fan rotating backwards. (Should be clockwise looking down from the top of the motor while running)

### **REDUCED BLAST CLEANING RATE:**

- Low media level reducing media flow. Check and fill if too low.
- Reduced air pressure. Possible malfunctioning regulator, partially closed main air supply valve, leaking air line.
- Blockage in media line or suction gun. Blockage may occur from foreign particles from items being blasted.
- Incorrect metering valve or metering jet adjustment.
- Worn gun parts (nozzle or air jet) Check and replace if needed.
- Worn clear media hose. Check hose for leaks or soft spots. Replace worn or damaged hose.
- Moist media. Check for moisture in the metering valve. If moisture is evident, some form of moisture removal will need to be added to the main air supply to the cabinet.

### **NO MEDIA OR AIR COMING OUT OF THE NOZZLE WHEN FOOT PEDAL IS PRESSED:**

- Nozzle is plugged. Remove nozzle and clear obstruction.
- Foot pedal malfunction. Check foot pedal inlet and outlet lines for pressure.
- Regulator may be turned down or off. Check and adjust.
- Air compressor may be off or supply valve may be closed.

## **S SERIES MAINTENANCE & OPERATIONAL TIPS**

### **Caking of Media:**

Media caking is caused by moisture in the air supply or from oily and greasy parts. If this is not corrected the media will not flow evenly and will plug the metering valve and the gun. Check the air supply; if water is present install a good moisture trap. If oily or greasy parts are to be blasted then wash the parts with a degreaser and dry the parts.

### **Reverse Pressure:**

If media stops flowing occasionally, place GLOVED thumb over the nozzle (hold tight) and push the foot peddle down for 2 seconds. This will cause the system to back blast through the gun and up the media hose and will loosen and clogs in the nozzle.

### **Gun Air Pressure Drop:**

Set the air pressure to 80 psi on the air gauge at the regulator. Hold the gun - press the foot pedal and see if the gauge pressure drops significantly. If the pressure drops more than 5 psi this indicates a restriction in the air supply line to the cabinet. This could be that the supply line is too small, a reducer or quick coupler, a plugged filter or other piping that doesn't allow enough air through. Also if the cabinet is too far from the air compressor a pressure drop will occur. Air supply line should be 1/2" or larger with NO quick couplers. (see Page 5)

# Certificate of Compliance

Certificate Number: LR 104892-1

Revision: LR 104892-3

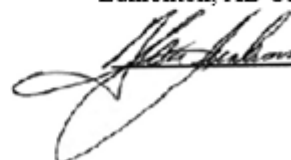
Date Issued: January 8, 1998

Issued to: Manus Abrasive Systems Inc.  
1040 - 78 Ave.  
Edmonton, AB T6P 1L7  
Canada  
Attention: Mr. Tom MacLean

*The products listed below are eligible to bear the CSA Mark*

<sup>1</sup>NOTE: The "NRTL/C" indicator also appears adjacent to the CSA Mark.

Issued by: Alan Junkins, E.T.  
Edmonton, AB Canada



## PRODUCTS

9091 01 - MOTOR OPERATED APPLIANCES - Miscellaneous

9091 81 - MOTOR OPERATED APPLIANCES - Miscellaneous

## PART A

Blast Cleaning Equipment, Cord-connected, MOD-U-BLAST, Models E2424, E3624, E4824, may or may not be followed with suffixes VAC or DC; Models S3026, P3026, S3626, P3626, S3636, P3636, S4826, S4836, P4836, S4848, P4848, P6026, S6036, P6036, S6048, P6048, S6060, P6060 may or may not be followed with suffixes DC, followed by 3B or 3F. Rated 115 V ac, 60 Hz, 10 A. Max. with a 300 CFM Reclaimer, 15 A. Max. with a 600 or 900 CFM Reclaimer.

## LEGEND

E	Economy Model
VAC	Industrial Vacuum Collector
DC	150 CFM Cartridge Type Dust Collector
S	Suction Cabinet
3	300 CFM
6	600 CFM
9	900 CFM
B	Dust Bag
F	Multi-Bag Dust Filter Cabinet
P	Pressure Cabinet
D	Dual-Station Cabinet

<sup>1</sup>The "NRTL/C" indicator adjacent to the CSA Mark signifies that the product has been evaluated to the applicable ANSI/UL and CSA Standards, for use in the U.S. and Canada. NRTL, i.e. Nationally Recognized Testing Laboratory, is a designation granted by the U.S. Occupational Safety and Health Administration (OSHA) to laboratories which have been recognized to perform certification to U.S. Standards.

## **WARRANTY COVERAGE POLICY**

**Mod-U-Blast** warrants all equipment listed in this manual that is manufactured by Mod-U-Blast to be free of defects in material and workmanship from the date of sale to the end-user. Notwithstanding any special, extended or limited warranty published by Mod-U-Blast will, for a period of TWELVE (12) months from the date of sale, repair or replace any part of the equipment determined by Mod-U-Blast to be defective.

This warranty applies only when the equipment is installed, operated and maintained in accordance with Mod-U-Blast's written recommendations

This warranty does not cover, and Mod-U-Blast will not be liable for general wear and tear, or any malfunction, damage or wear caused by faulty installation, misapplication, abrasion, corrosion, inadequate or improper maintenance, negligence, accident, tampering, or substitution of non-Mod-U-Blast component parts.

This warranty is conditional upon the prepaid return of the equipment or part claimed to be defective to a authorized Mod-U-Blast distributor for verification of the claimed defect. (Proof of purchase may be required) If found to be defective then the Mod-U-Blast distributor will repair or replace free of charge any defective part. The equipment will be returned to the original purchaser, transportation prepaid. If the inspection of the equipment does not disclose any defect in material or workmanship, repairs will be made at a reasonable charge, which charges may include the costs of parts, labor, and transportation.

**THIS WARRANTY IS EXCLUSIVE, AND IS IN LIEU OF ANY OTHER WARRANTIES, EXPRESSED OR IMPLIED, INCLUDING BUT NOT LIMITED TO WARRANTY OF MERCHANTABILITY OR WARRANTY OF FITNESS FOR A PARTICULAR PURPOSE.**

Mod-U-Blast's obligation and the buyer's remedy for any breach of warranty shall be as set forth above. The buyer agrees that no other remedy (including, but not limited to, incidental or consequential damages for lost profits, lost sales, injury to person or property, or any other incidental or consequential loss) shall be available. Any action for breach of warranty must be brought forward within one (1) year of the date of sale.

Items sold, but not manufactured by Mod-U-Blast are subject to the warranty, if any, of their manufacturer. Mod-U-Blast will provide the purchaser with reasonable assistance in making any claim for breach of these warranties.

**The following items are not covered under the Mod-U-Blast warranty policy:**

- Any component or body of this equipment determined by Mod-U-Blast to be normal wear and tear.
- Parts subject to abrasive wear such as, nozzles, hoses, gloves, windows, window protectors, cabinet flooring & dust filters.

Claims will be honored only if the warranty card is returned within a period of two months from the factory shipping date.

The card can be returned to your Mod-U-Blast salesperson or mailed to the address below.



1040-78 Avenue

Edmonton, AB

Canada

T6P 1L7

PH: (780) 468-2588

FAX: (780) 465-7317

In the event of failure of this equipment  
Please contact a Mod-U-Blast service centre