



## MOD-U-BLAST® P-SERIES BLAST CABINETS



**MOD-U-BLAST®**



## PART NUMBERS AND SCHEMATICS GUIDE

## Company Profile

Allredi was formed in the early 2020, when two of the largest distributors in the blasting, coating, safety, and environmental industry, APE Companies and Marco Group International, joined forces. While the qualities both companies are known for have not changed, a lot about our business is new. New abilities. New agilities. New ways to help you win. This calls for a new name, Allredi.

This name exemplifies what we have become. It is completely oriented to the needs of our customers. To your needs. It says that when you call us for anything – products, service, expert advice, anything – you can consider it done. Or even better, Allredi done.

We are your right-now supplier. From skills to SKUs, we deliver the goods fast. So you can be more agile every minute, every day. This is who we are. This is what our new name means. Go ahead and expect excellence, because we're bringing it.

## Our Mission and Vision

To be the industry's preferred partner in surface preparation solutions through unrivaled technical expertise, customer experience, product availability, and tailored service offerings.

## The Allredi Difference

- **Industry Experience** – With Allredi on your team, you have access to expertise which can only come from decades of industry leadership. We have organized our engineering department, production specialists, customer operations, and safety support into a "Center of Competence." As an Allredi customer, you have access to hundreds of years of cumulative experience related to your operations.
- **Manufacturing Excellence** – Allredi is a U.S. based manufacturer of equipment for the Surface Preparation and Protective Coatings industries. Allredi's engineers benchmark the industry to ensure that we design and manufacture superior products that set the "Gold Standard" for performance, safety, and quality.
- **Legendary Customer Service** – Allredi's legendary customer service team is staffed by friendly, highly-trained individuals who are focused on providing the highest level of product support, order accuracy, and customer satisfaction.
- **Product Availability** – We stock over 10,000 SKU's and have over 45 shipping locations to serve North American and International markets for all major brands of blasting, coating, environmental, and safety equipment. Allredi is your right-now supplier, so you can keep your projects moving. From our foundation of strong relationships, we have built a nationwide network that puts vast inventory and ready service close to our customers. We provide advanced expertise, and we deliver the goods fast – so you can easily access the products and services you need to me more agile every minute, every day.
- **Technology Leadership** – Our website provides: Operator's Manuals, Part Numbers and Schematics Guides, SDS information, and key product features and specifications, providing access to information 24/7.

# TABLE OF CONTENTS

<b>Company Profile</b> . . . . .	<b>1</b>
<b>Table of Contents</b> . . . . .	<b>2</b>
<b>Mod-U-Blast® P-Series Blast Cabinets</b> . . . . .	<b>3-24</b>
Choosing a Blast Cabinet . . . . .	3-4
Mod-U-Blast P-Series Specifications . . . . .	5
Part Numbers . . . . .	6
Part Numbers & Schematics . . . . .	7-24
P-Series Cabinet Parts - Side View . . . . .	7-8
P-Series Cabinet Parts - Front View . . . . .	9-10
Marco 0.7 Cu. Ft. Blast Pot . . . . .	11-12
Marco 0.9 Cu. Ft. Blast Pot . . . . .	13-14
Marco 1.0 Cu. Ft. Blast Pot . . . . .	15-16
P-Series Cabinet & Pilot Lines . . . . .	17
1" Diaphragm Dump Valve . . . . .	18
Auto Air Valve . . . . .	19-20
Dump Valve . . . . .	21
M-Metering Valve . . . . .	22
Duct Hose . . . . .	23-24
Reclaimer to Dust Collector . . . . .	23
Pressure Cabinet Hopper to Reclaimer . . . . .	24
Wear Kits . . . . .	25
Dust Collectors . . . . .	26

## BLAST CABINETS QUALIFYING QUESTIONS

**When considering a purchase of a Mod-U-Blast® Cabinet we would recommend reviewing the following guide to ensure that your expectations are aligned with the correct configuration.**

### Determining the Cabinet Size

The most important factor is to make sure the parts you typical blast will fit through the door to the cabinet. Allow enough room to be able to freely move the part and provide adequate space between the part and walls. We suggest 10–18" around all sides that need to be blasted. This helps reduce wear on the walls from abrasive rebound.

### Frequency of use:

One main consideration when choosing a cabinet is the frequency of use.

#### How often will you be using the cabinet?

All of our cabinets are built to a high quality standard, however, some are built for heavier usage than others.

- **Mod-U-Blast P-Series Blast Cabinets:** Daily use, industrial applications
- **Mod-U-Blast S-Series Blast Cabinets:** Frequent use, but not a primary function of your daily work
- **Mod-U-Blast E-Series Blast Cabinet:** Occasional, light-duty use, small shops

### Do you need a pressure or a suction configuration?

Another major consideration when choosing a blast cabinet is whether your main objective is production or efficiency. While we all want to get our work done as fast as possible, budget can be restrictive to choosing the fastest option.

All Mod-U-Blast Cabinets are built to operate efficiently, however some are built to provide a higher level of production.

- **Pressure Systems** utilize a blast pot to force abrasive in to the blast stream. Typically 30%-50% more powerful than suction systems, but also use 30%-40% more compressed air. This setup is ideal for applications where the user will be blasting high volume of parts, using the blast cabinet frequently, or have heavy coatings or mil scale to remove from the parts.
- **Suction Systems** use compressed air to create a venturi effect that pulls abrasive in to the blast stream. Simple design that is easy to service and troubleshoot with less compressed air consumption. This setup is commonly used for light shop work with lower production volume requirements.

# BLAST CABINETS QUALIFYING QUESTIONS

## Selecting a Reclaimer

Get the most out of your abrasive by reclaiming, cleaning, and reintroducing it in to your operating mix. Reclaimers are available on either Pressure or Suction systems and reduce abrasive consumption while providing the best possible finish every time. Reclaimers also reduce clogging and dust in your cabinets by removing large particles and fines from the abrasive.

Engineered and designed to precision, the Mod-U-Blast® tunable media reclaimer is unequalled in performance. Separation of the blast media, over sized foreign matter, and dust becomes as accurate as possible in a cyclone-type reclaim system. Equipped with replaceable wear plate.

## Selecting a Dust Collector

All abrasive blasting generates dust that needs to be removed from the blasting area. A Dust Collector is a device designed to remove dust and debris from the air in the area being blasted.

There are two main types of dust collectors available to add to your blast cabinet system.

- **Bag style** use long socks to filter the air as it passes through the system. The dust collects on the exterior of the bags where it remains until the unit is turned off when the bags are shaken to release the collected material.
- **Cartridge-style** dust collectors use pleated cartridges to filter the air as it passes through the system. The material collects on the outside of the cartridge and released, while it is still in use, by a pulse of compressed air that is forced into the inside of the filter. Cartridge-style dust collectors are the cleanest option available and will be the most effective. Dust collector filter cartridges are available in different materials depending on level of air quality desired.

## What power source will you be working with?

- Mod-U-Blast blast cabinets are available in either single phase or 3-phase.

## What is your volume of available compressed air?

- Cabinet type and nozzle size will determine the amount of compressed air that you will need. All nozzle charts reflect the air requirements based on new nozzles. We suggest moving up in 1 size to reflect the compressed air requirement as the nozzle nears the end of its intended usage.
- Pressure Systems will require more compressed air than Suction Systems

## MOD-U-BLAST P-SERIES BLAST CABINET

The Mod-U-Blast® “P Series” Pressure Dry Blast Cabinets were engineered for maximum production (3 to 4 times faster than standard suction blasting - “S Series”). Mod-U-Blast Pressure Cabinets are equipped with a Pneumatic Valve for optimum safety and blast media flow, direction, and velocity (foot pedal operated). Pressure systems give the control needed to clean at gentle pressures (10 to 20 PSI) or aggressive cleaning as high as 110 PSI.



*48" x 36" pressure-feed system, with 600 CFM Reclaimer , Reverse Pulse Dust Collector, and 1.0 Cu. Ft. Pressure Pot*

MOD-U-BLAST® P-SERIES BLAST CABINETS – SPECIFICATIONS	
Safety Door Shut-offs	Air blow-off nozzle
14-Gauge Steel Construction	Replaceable Reclaim Wear Plate
Safety Glass Throughout	External Fluorescent Lighting System
Perforated Steel Flooring	Optional LED Light Kit
Adjustable Air Intake	Floating Foot Pedal (Pneumatic or Electric)
Durable Powder Coating	Overlapping Positive Tension Doors

## PART NUMBERS

### MOD-U-BLAST P-SERIES PRESSURE BLAST CABINETS

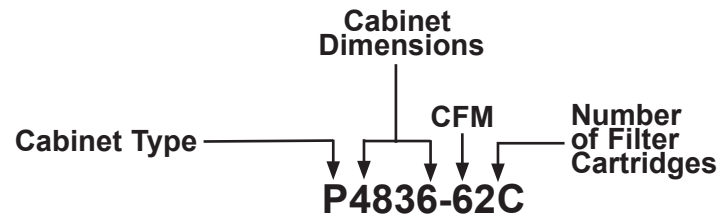
CABINET MODEL	CFM	Reclaimer	Filter Hopper Dust Collector	Reverse Pulse Dust Collector	Work Space Dimensions			Empty Weight (lbs)
					A (H)	B (W)	C (D)	
10MANP36366FH	600	x	10MANM600FH		40	36	36	690
10MANP48366FH	600	x	10MANM600FH		40	48	36	973
10MANP48489FH	900	x	10MANM900FH		40	48	48	1283
10MANP60369FH	900	x	10MANM900FH		40	60	48	1248
10MANP60489FH	900	x	10MANM900FH		40	60	48	1378
*10MANP363662C	600	x		10MANM6002C	40	36	36	1073
*10MANP483662C	600	x		10MANM6002C	40	48	36	1183
*10MANP484892C	900	x		10MANM9002C	40	48	48	1458
10MANP603692C	900	x		10MANM9002C	40	65	36	1413
10MANP604892C	900	x		10MANM9002C	40	65	48	1503

\*stocked/on order to stock

Additional configurations available. Contact Allredi.

## BLAST CABINET PART NUMBER BREAKDOWN

All cabinet interiors are 40 inches tall.



## PART NUMBERS & SCHEMATICS

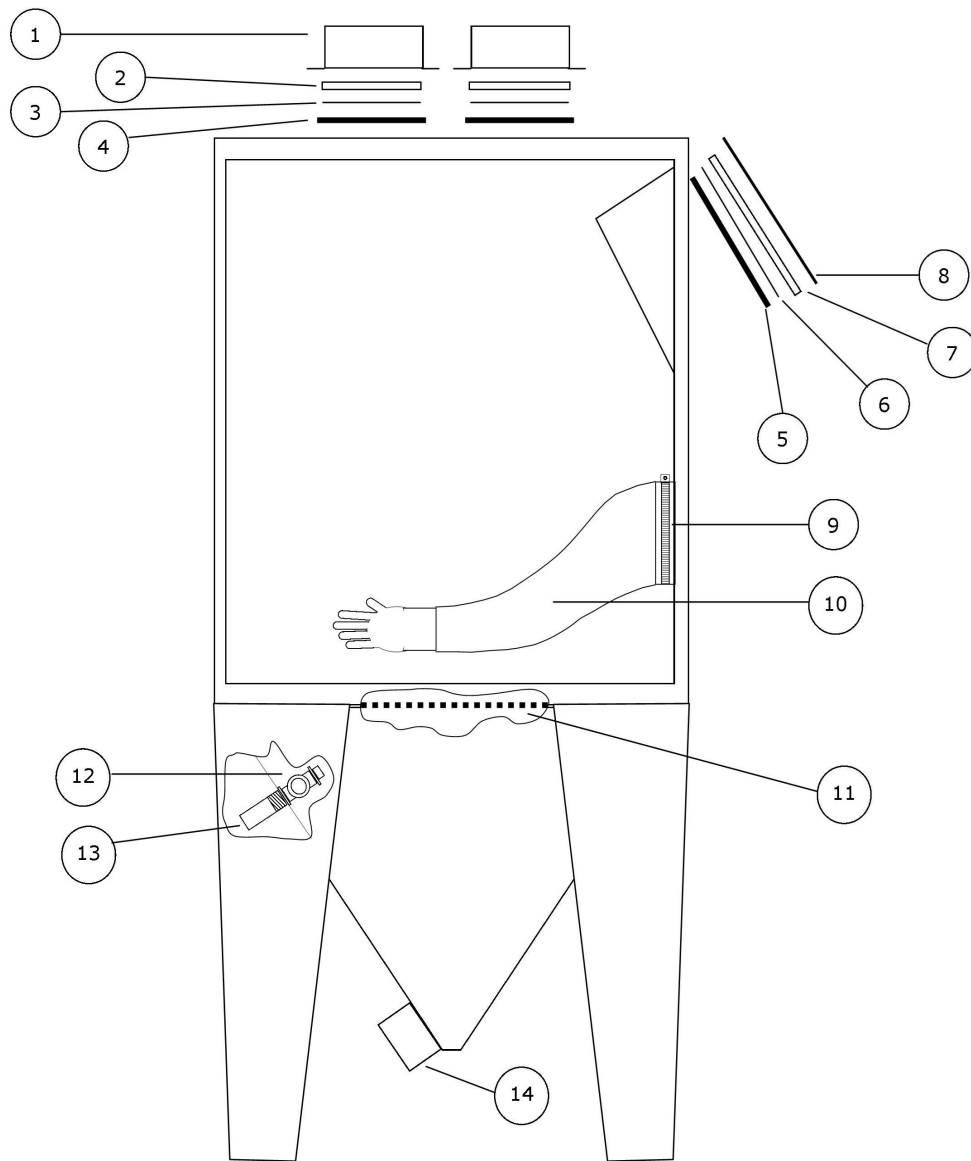
**Figure 1: P-Series Cabinet Parts - Side View**

Item #	Part #	Description
<b>Fig. 1</b>		
1	ZLAMPB	Light Housing
2	12215A	Window
3	43518S	Window Protector
4	16540	Trim Lok - 5 Ft.
5	16540	Trim Lok - 5 Ft.
6	41117S	Window Protector
7	12216	Window
8	16053	Window Frame
9	12535	Glove Clamp
10	15270	Glove Set ( <i>Set of Two</i> )
—	15271	Left Glove Only
—	15272	Right Glove Only
11	ZF4836H	Perforated Flooring ( <i>Fits 48" x 36" Cabinets</i> )
12	TEE10	1" Tee
—	PL10	1" Plug
13	60432	Hose Coupler
14	ZPL6F	Cabinet Hopper Flange



## PART NUMBERS & SCHEMATICS

Figure 1: P-Series Cabinet Parts - Side View



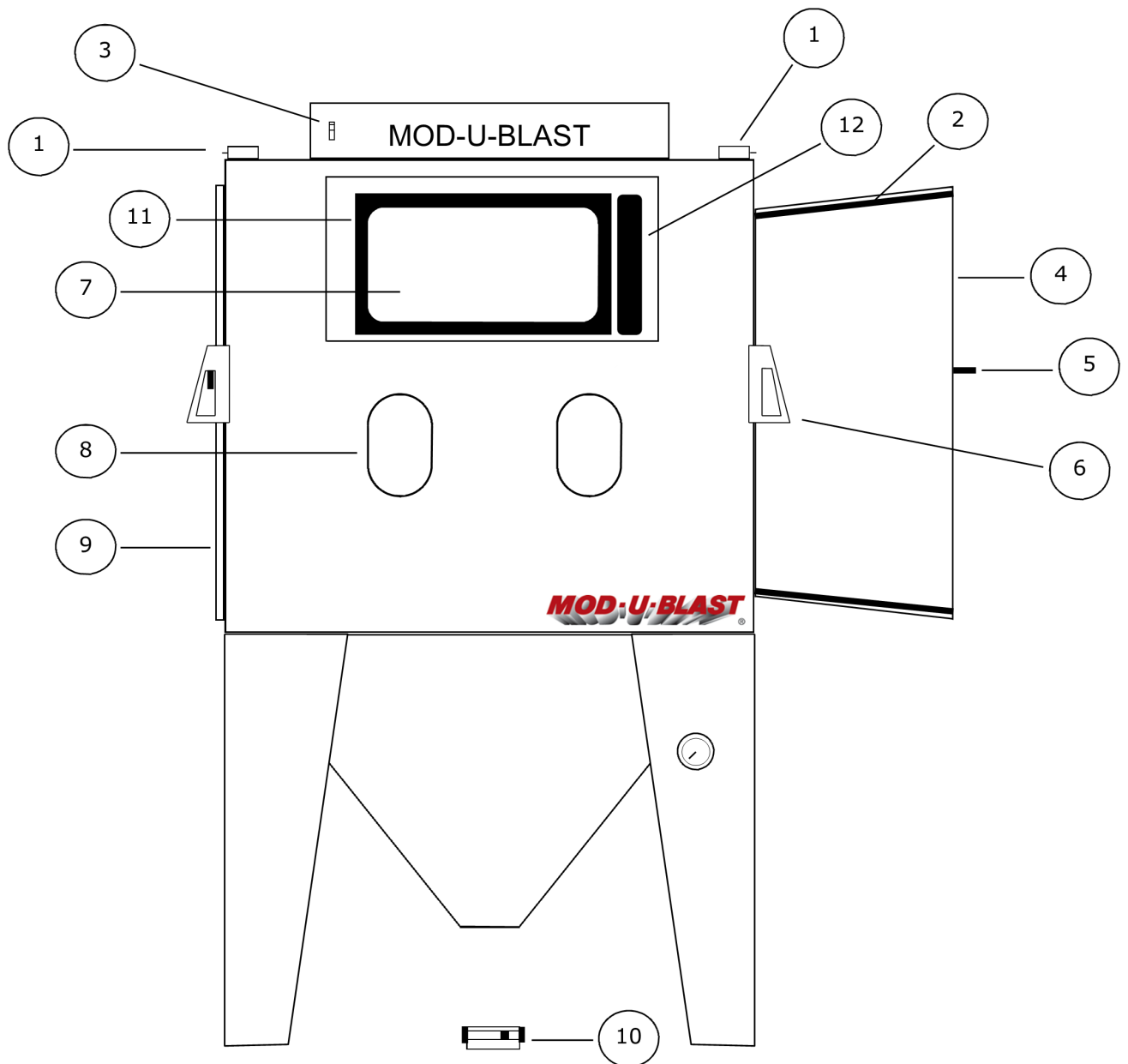
## PART NUMBERS & SCHEMATICS

**Figure 2: P-Series Cabinet Parts - Front View**

Item #	Part #	Description
<b>Fig. 2</b>		
1	12202	Door Safety Switch
2	124332	Door Gasket
3	16371	Light Switch
4	ZDR36	Right Door
5	ZHANDLE	Door Handle
6	ZLATCH	Door Latch
7	—	Viewing Window ( <i>See Fig. 1</i> )
8	16542	Glove Trim
9	ZDL36	Left Door
10	16210	Foot Pedal
11	10MAN16052	Window Frame, 4 Holes
12	10MAN16051	Mylar Film Dispenser, 12.5"
—	10MAN41118	Mylar Film Roll 12.5" x 10'

## PART NUMBERS & SCHEMATICS

Figure 2: P-Series Cabinet Parts - Front View



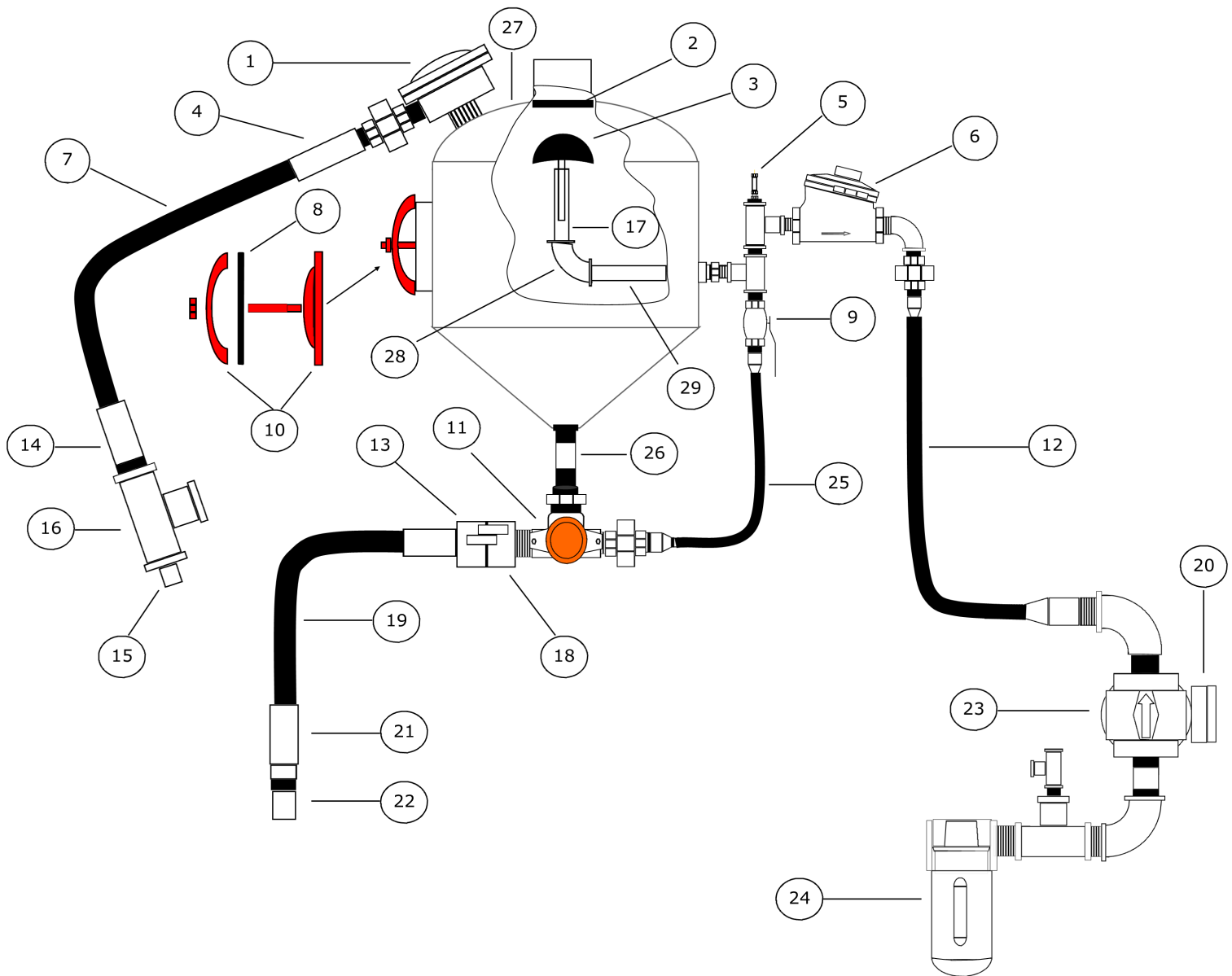
## PART NUMBERS & SCHEMATICS

**Figure 3: Marco® 0.7 Cu. Ft. Blast Pot**

Item #	Part #	Description
<b>Fig. 3</b>		
1	EE03371	Exhaust Valve
2	MUS10101132	Pop-Up Seal ( <i>Black</i> )
3	MUS10101133	Pop-Up ( <i>Black</i> )
4	60500	Female Coupler
5	51202125	Pressure Relief Valve
6	280750	Air Inlet Valve
7	SB0502	1/2" I.D. Blast Hose Hose
8	22618	Gasket
9	65775	Choke Ball Valve
10	MUS10101752	Inspection Door Assembly
11	EE2125107	Micro Valve
12	34AIR	3/4" I.D. Air Hose
13	60508	Blast Hose Coupler
14	60432	Male Coupler
15	PL10	1" Plug
16	TEE10	1" Tee
17	MUS20100569	Pipe Nipple
18	605250	Tank Coupling
19	SB0502	1/2" I.D. Blast Hose
20	55415	Pressure Gauge
21	60499	Nozzle Holder
22	31063	#3 (3/16") Nozzle
—	30164	#4 (1/4") Nozzle
—	30165	#5 (5/16") Nozzle
23	50350	3/4" Regulator
24	50150	3/4" Moisture Separator
25	34AIR	3/4" I.D. Air Hose
26	290181	Pipe Nipple
27	MUS10109742	0.7 Cu. Ft. Pressure Vessel
28	MUS10101002	1" x 1/2" x 90° Elbow
29	MUS10109751	1" x 4-1/2" L Pipe Nipple

## PART NUMBERS & SCHEMATICS

Figure 3: Marco® 0.7 Cu. Ft. Blast Pot



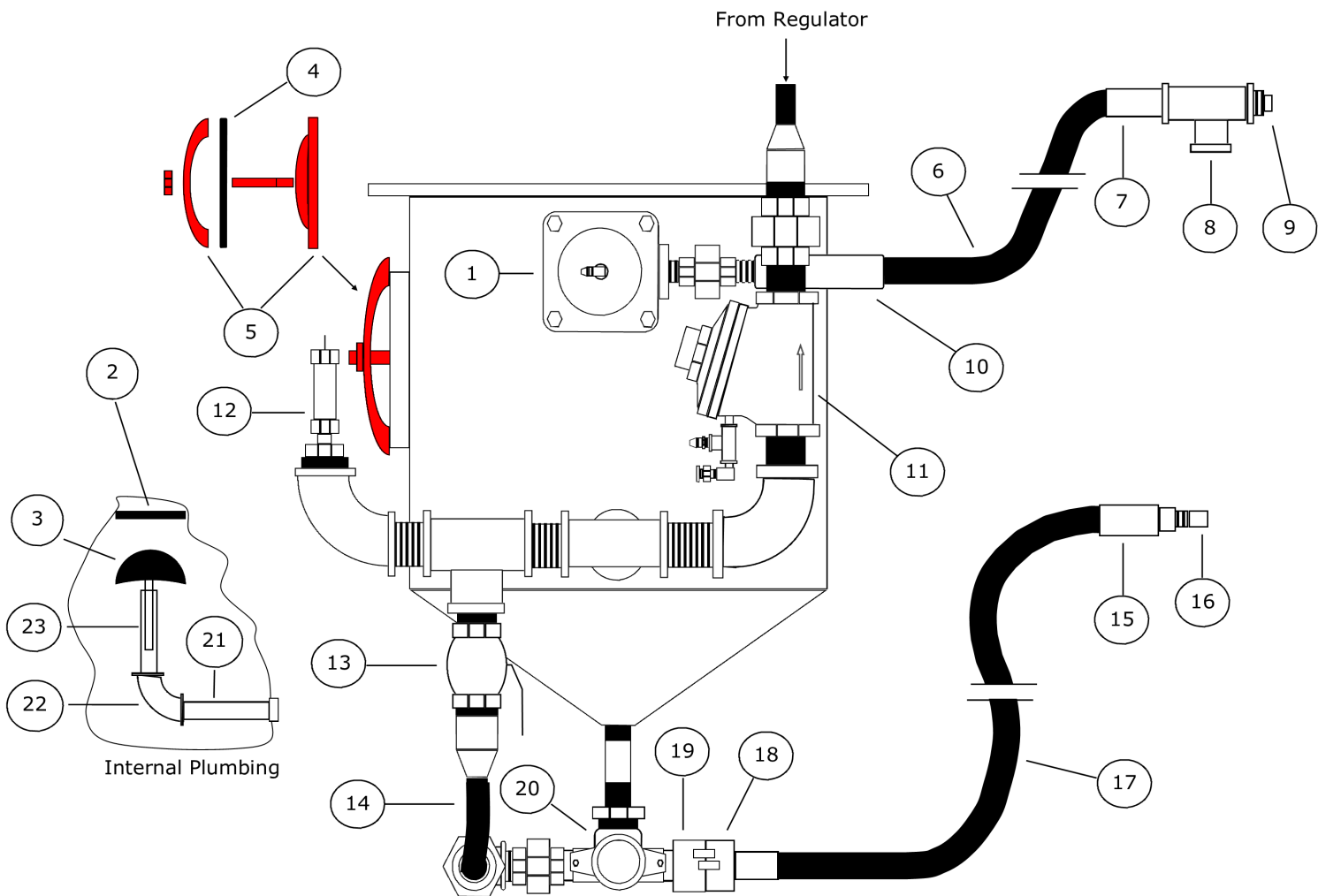
## PART NUMBERS & SCHEMATICS

**Figure 4: Marco® 0.9 Cu. Ft. Blast Pot**

Item #	Part #	Description
<b>Fig. 4</b>		
1	10EE03371	Exhaust Valve
2	MUS10101132	Pop-Up Seal ( <i>Black</i> )
3	MUS10101133	Pop-Up ( <i>Black</i> )
4	22618	Gasket
5	MUS10101752	Inspection Door Assembly
6	SB0502	1/2" I.D. Blast Hose Hose
7	60500	Male Coupler
8	TEE10	1" Tee
9	PL10	1" Plug
10	60500	Female Coupler
11	280750	3/4" Air Inlet Valve
12	51202125	Pressure Relief Valve
13	65775	3/4" Ball Valve (Choke)
14	34AIR	3/4" I.D. Air Hose
15	60499	Nozzle Holder
16	30163	#3 (3/16") Nozzle
—	30164	#4 (1/4") Nozzle
—	30165	#5 (5/16") Nozzle
17	SB0502	1/2" I.D. Blast Hose
18	60508	Blast Hose Coupling
19	605250	Tank Coupling
20	EE2125107	Micro Valve
21	MUS10109831	1" x 5-1/2" L Pipe Nipple
22	MUS10101002	1/2" x 1" x 90° Elbow
23	MUS10108188	1/2" x 4" Pipe Nipple

## PART NUMBERS & SCHEMATICS

Figure 4: Marco® 0.9 Cu. Ft. Blast Pot



## PART NUMBERS & SCHEMATICS

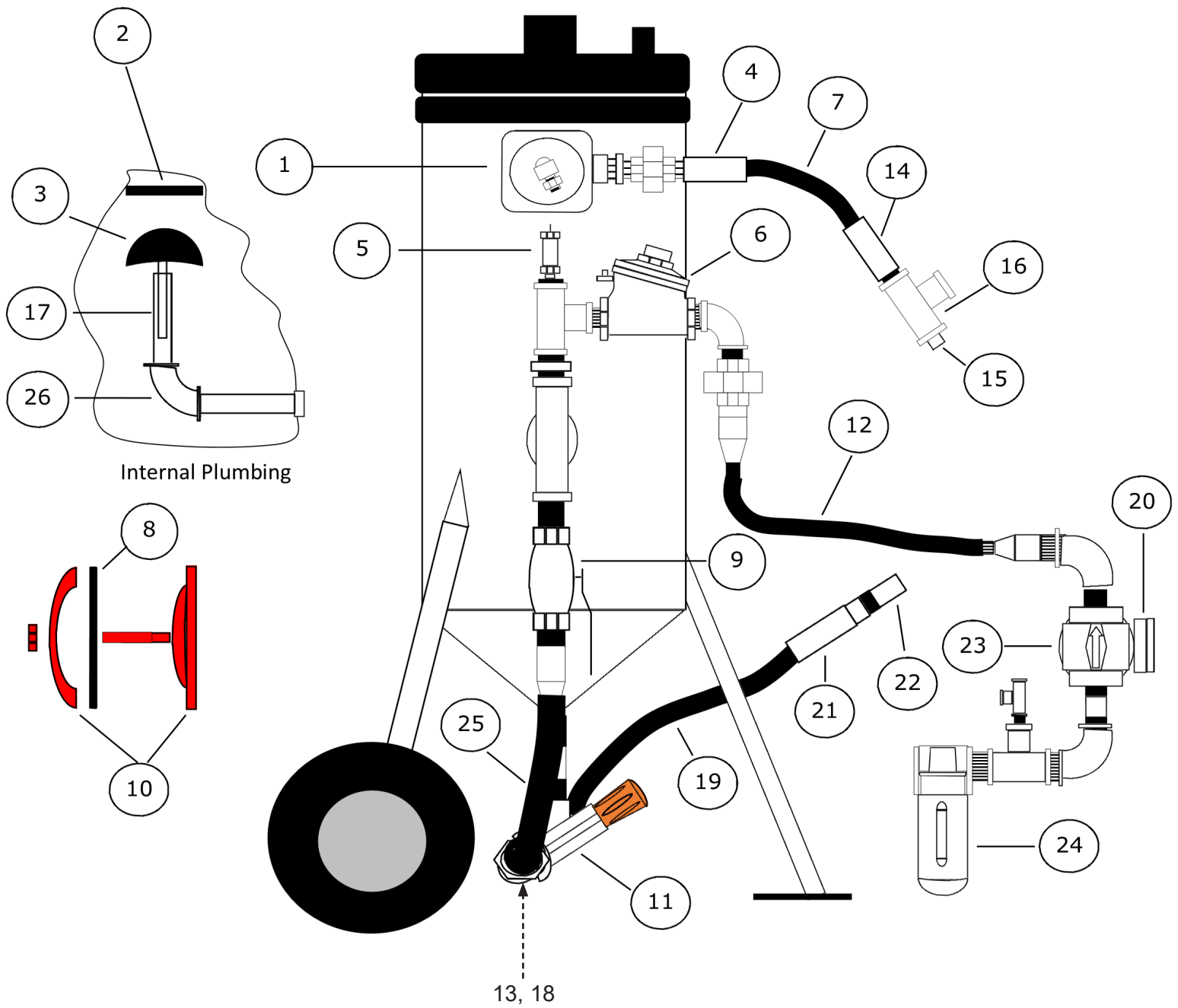
**Figure 5: Marco® 1.0 Cu. Ft. Blast Pot**

Item #	Part #	Description
<b>Fig. 5</b>		
1	EE03371	Exhaust Valve
2	MUS10101132	Pop-Up Seal ( <i>Black</i> )
3	MUS1010133	Pop-Up ( <i>Black</i> )
4	60500	Female Coupler
5	51202125	Pressure Relief Valve
6	280750	Air Inlet Valve
7	SB0502	Exhaust Hose
8	22618	Gasket
9	65775	Choke Ball Valve
10	MUS10101752	Hatch Assembly
11	EE2125-107	Micro Valve
12	34AIR	3/4" I.D. Air Hose
13	60508	Blast Hose Coupler ( <i>not shown</i> )
14	60432	Male Coupler
15	PL10	1" Plug
16	TEE10	1" Tee
17	MUS10L803057	1/2" x 7-1/2" L Pipe Nipple
18	605250	Tank Coupling ( <i>not shown</i> )
19	SB0502	1/2" I.D. Blast Hose
20	55415	Pressure Gauge
21	1060499	Nozzle Holder
22	31063	#3 (3/16") Nozzle
—	30164	#4 (1/4") Nozzle
—	30165	#5 (5/16") Nozzle
23	50350	3/4" Regulator
24	50150	3/4" Moisture Separator
25	34AIR	3/4" I.D. Air Hose
26	MUS10101002	1" x 1/2" x 90° Elbow



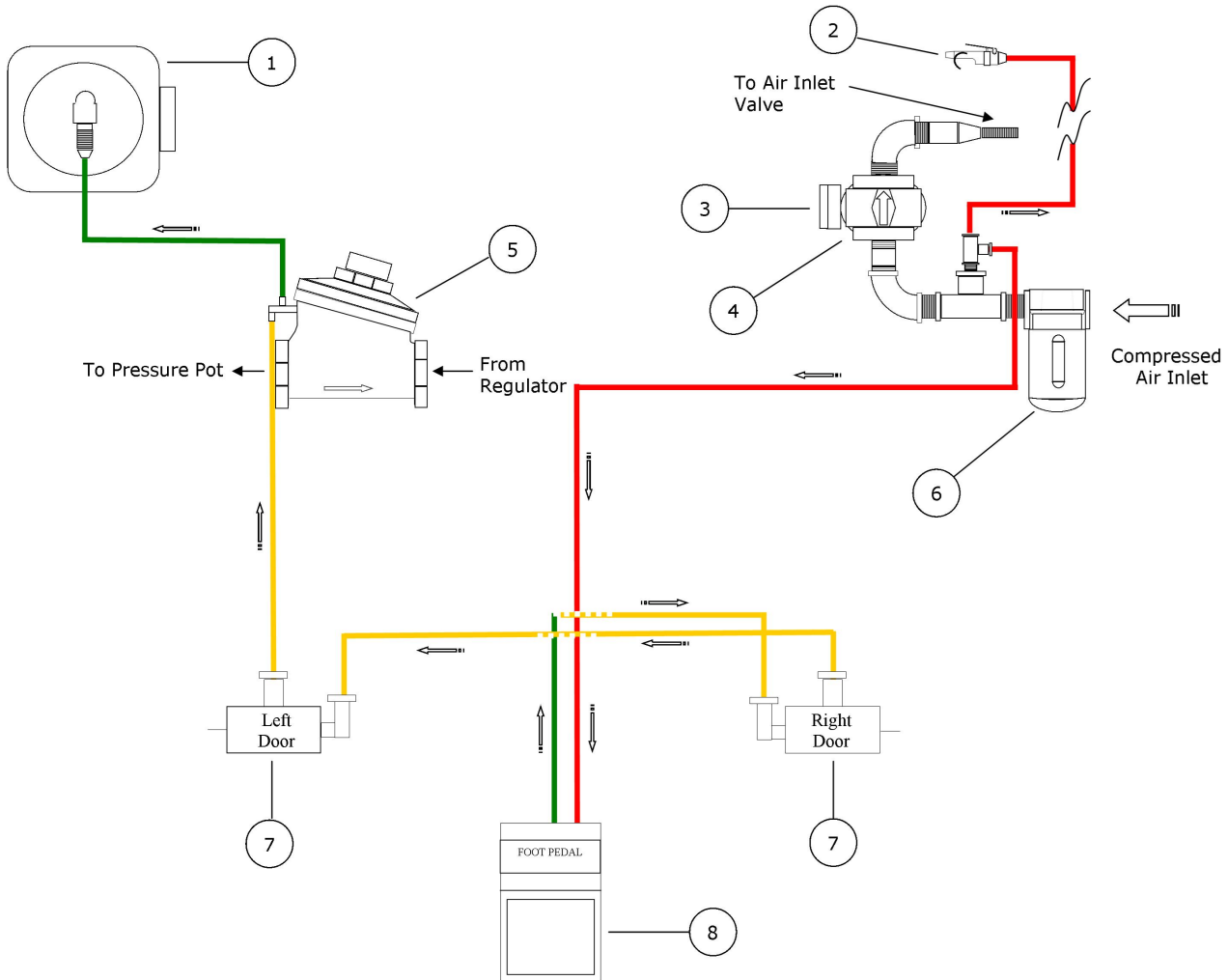
## PART NUMBERS & SCHEMATICS

Figure 5: Marco® 1.0 Cu. Ft. Blast Pot



## PART NUMBERS & SCHEMATICS

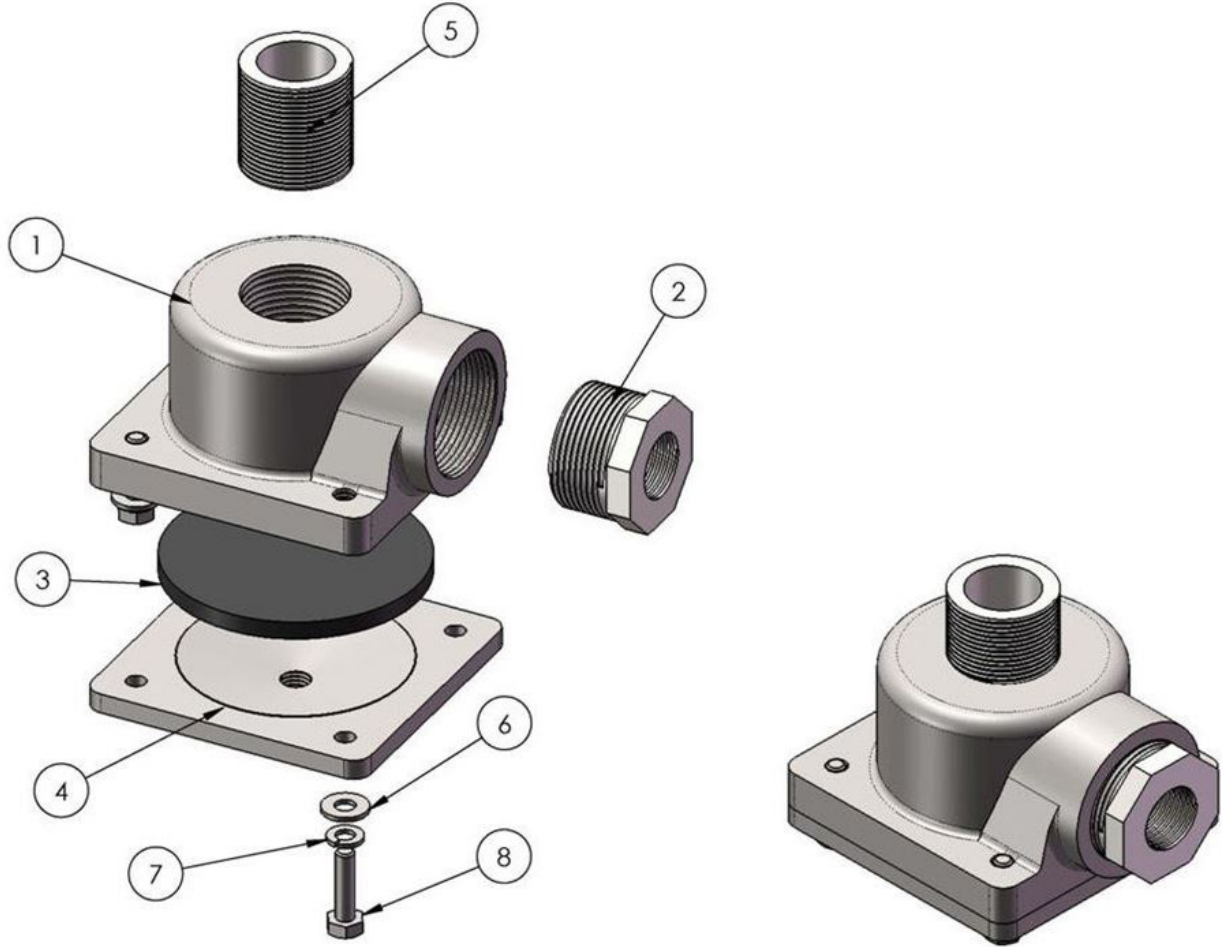
Figure 6: P-Series Cabinet & Pilot Line



Item #	Part #	Description
<b>Fig. 6</b>		
1	EE03371	Exhaust Valve
2	60110P	Blow Gun
3	55415	Pressure Gauge
4	50350	3/4" Regulator
5	280750	3/4" Air Inlet Valve
6	51150	3/4" Moisture Separator
7	12202	Safety Door Interlock Switch
8	16210	Pressure Foot Pedal

## PART NUMBERS & SCHEMATICS

Figure 7: 1" Diaphragm Dump Valve



Item #	Part #	Description
<b>Fig. 7</b>		
1	—	Body
2	—	Reducer Bushing
3	EE06149	Diaphragm
4	—	Top Plate
5	—	Steel Pipe
6	—	Preferred Narrow FW 0.25
7	—	Regular LW 0.25
8	—	H-Bolt 0.2500-20 x 1 x 1-N

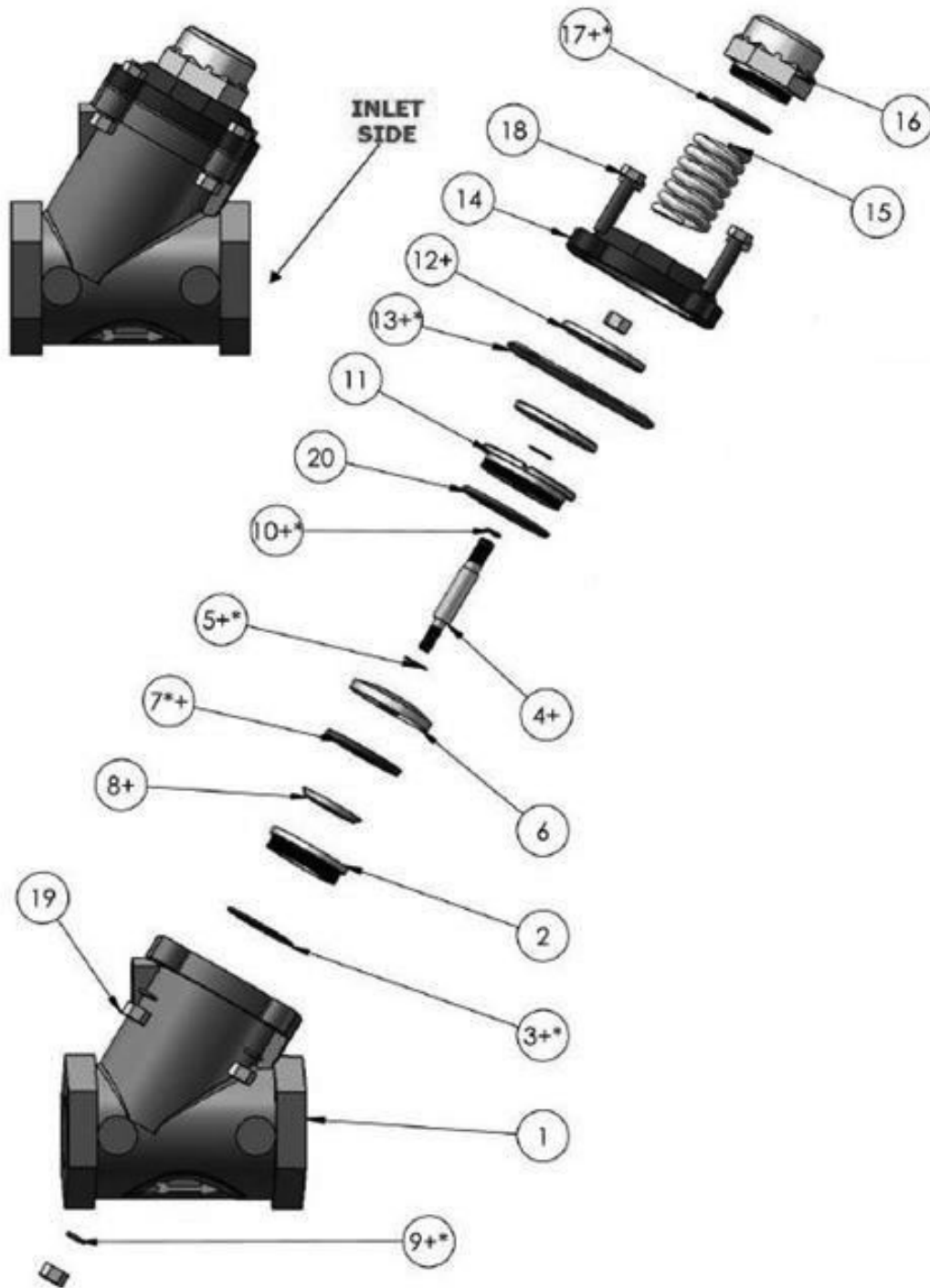
## PART NUMBERS & SCHEMATICS

Figure 8: Auto Air Valve

Item #	Part # 1-1/4" & 1-1/2"	Part # 3/4" & 1"	Description
<b>Fig. 8</b>			
1	—	—	Body
2	281259	—	Seat
3+*	—	—	O-Ring (Thick)
4+	—	—	Shaft
5+*	—	—	Washer (Copper)
6	—	—	Disc Retainer
7+*	—	—	Rubber Disc
8+	281261	—	Disc Plate
9+*	—	—	1/4" Lock Washer
10+*	—	—	O-Ring for Shaft
11	—	—	Retainer Bushing
12	—	—	Diaphragm Plate
13+*	281256	281006	Diaphragm
14	281258	281007	Cap
15	22123	281005	Spring
16	—	—	Spring Retainer
17+*	—	—	O-Ring (Thin)
18	MISC	MISC	1/4" Bolt
19	MISC	MISC	Nut
20	—	—	O-Ring for Retainer Bushing
21	281500	—	1-1/2" Auto Air Valve
22	281250	—	1-1/4" Auto Air Valve
23	—	280750	3/4" Auto Air Valve
24	—	281000	1" Auto Air Valve
*	EE212300799	EE212300699	Seal Kit
+	281253	281003	Repair Kit

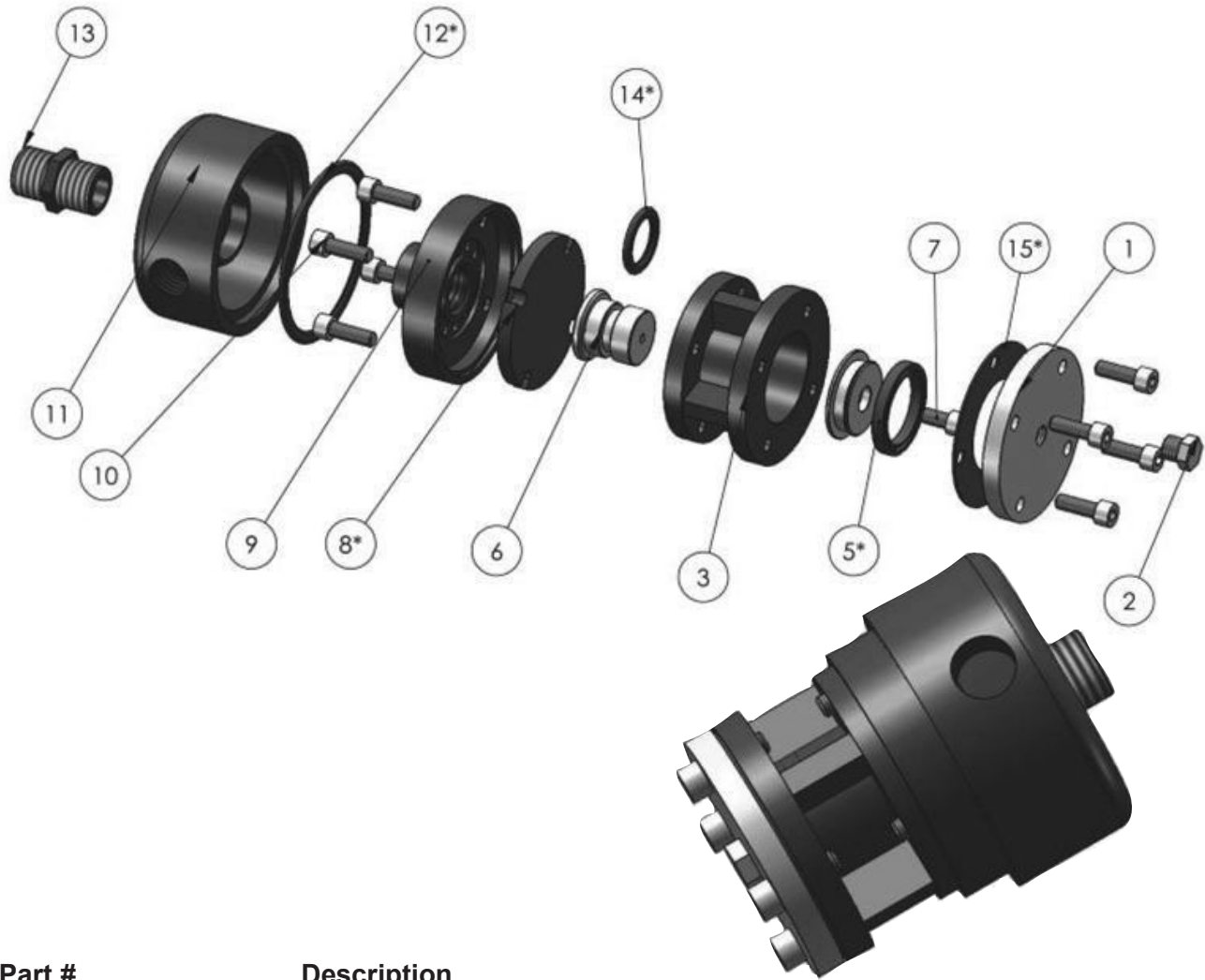
## PART NUMBERS & SCHEMATICS

Figure 8: Auto Air Valve



## PART NUMBERS & SCHEMATICS

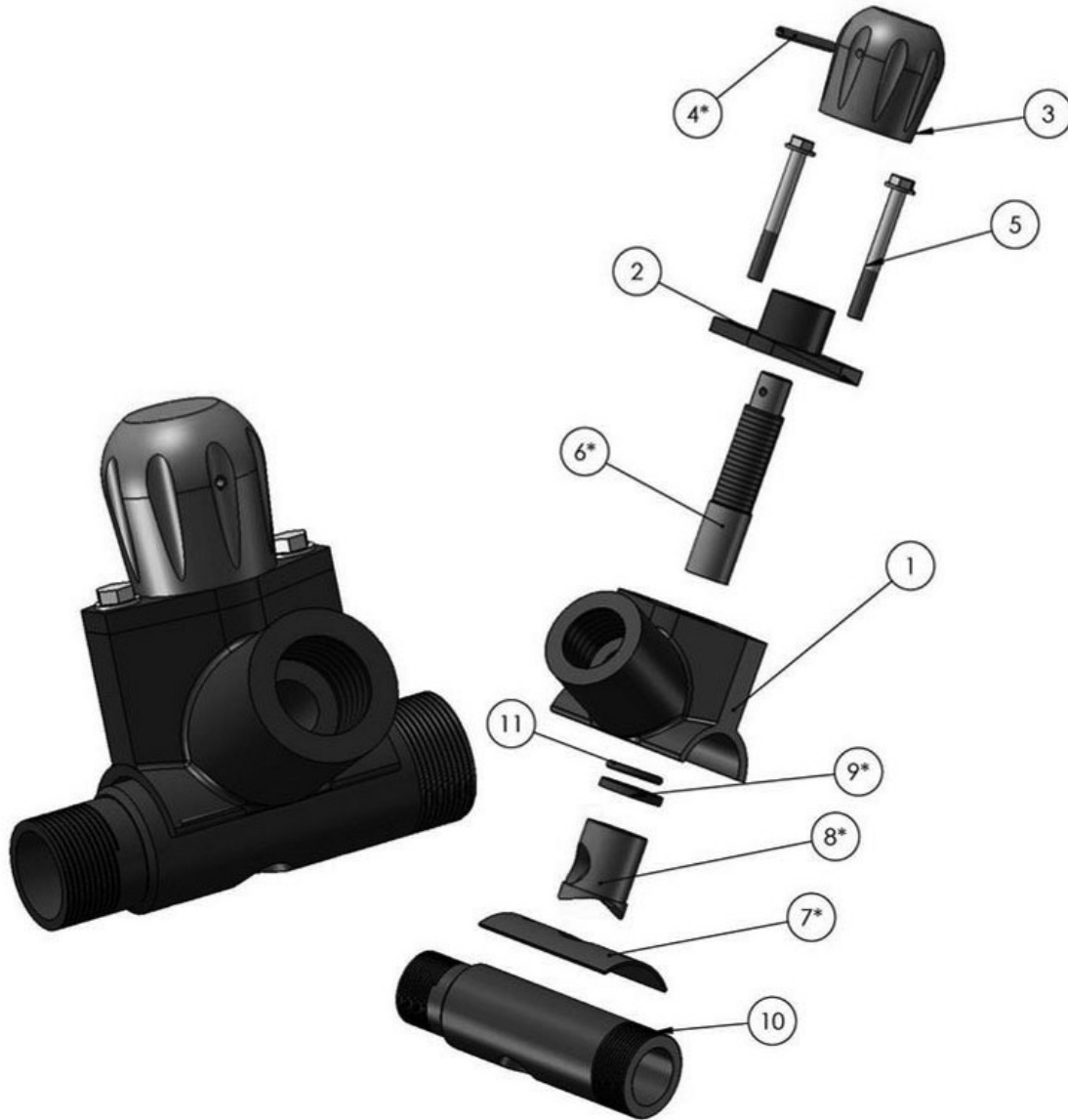
Figure 9: Dump Valve



Item #	Part #	Description
<b>Fig.9</b>		
1	290315	1/4" NPT Bottom Plate
2	PL02	1-4" BSP Plug
3	290313	Bleed Off Cylinder Housing
4	290330	Piston
5*	290331	Piston Seal
6	290321	Bleed Off Cylinder
7	290306	M8 x 25 Screw
8*	290325	Diaphragm
9	290310	3/4" NPT Bleed Off Manifold
10	290306	M8 x 25 Screw
11	290314	Top Cover
12*	290311	O-Ring for Manifold
13	411305	3-4 BSP Nipple
14*	290327	Bleed Cylinder O-Ring
15*	290316	Gasket
*	290380	Seal Kit ( <i>all items marked with *</i> )

## PART NUMBERS & SCHEMATICS

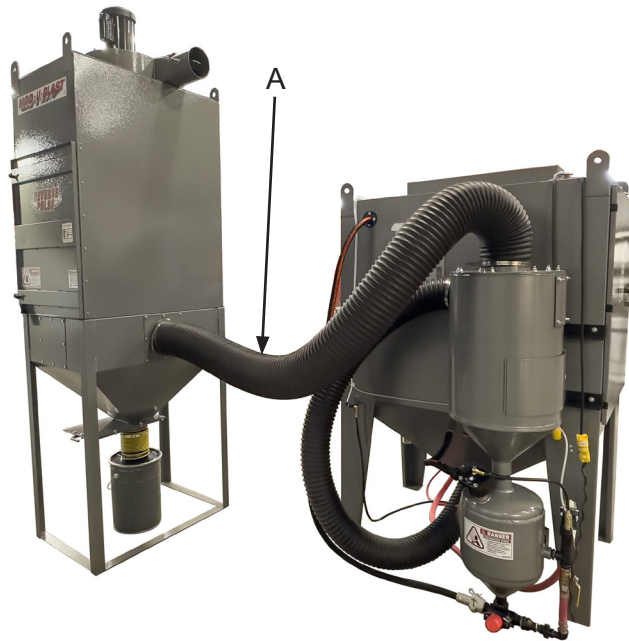
Figure 10: M-Metering Valve



Item #	Part #	Description
<b>Fig.10</b>		
1	EE212500006	Body
2	EE212500002	Cap
3	EE212500001	Knob
4*	EE212500003	Roll Pin
5	EE701050556	Bolt with Washer
6*	EE212500005	Plunger
7*+	EE212500009	Gasket
8*+	EE212510008	Urethane Sleeve
9*+	EE214900006	Plunger Seal
10	EE212500710	Pipe Nipple
11*+	EE214900018	O-Ring
*	EE212510099	Repair Kit ( <i>all items marked with *</i> )
+	EE212510098	Soft Seal Kit ( <i>all items marked with +</i> )


## DUCT HOSE

### Hose A: Reclaimer to Dust Collector



Part Number	RECLAIMER TO DRY FILTER DUST COLLECTOR			
	Cabinet CFM	Hose I.D.	Hose Length	Hose Type
10MAN16050	300	5"	5 Ft.	Medium-Duty
10MAN16060	600	6"	5 Ft.	Medium-Duty
10MAN16070	900	7"	7 Ft.	Medium-Duty

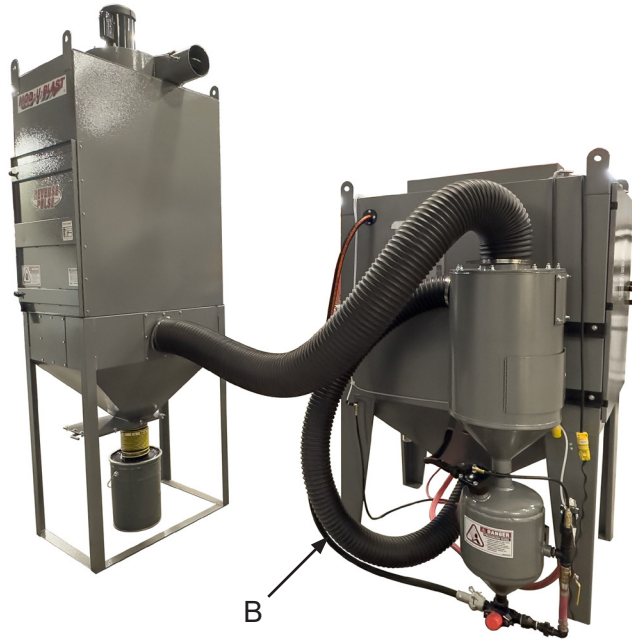
Part Number	RECLAIMER TO REVERSE PULSE DUST COLLECTOR			
	Cabinet CFM	Hose I.D.	Hose Length	Hose Type
10MAN16060	300	6"	6 Ft.	Medium-Duty
10MAN16070	600	7"	7 Ft.	Medium-Duty
10MAN16080	900	8"	8 Ft.	Medium-Duty

	Part Number	MEDIUM-DUTY HOSE CLAMPS				
		Hose I.D.	Clamp Min	Clamp Max	Clamp Material	Clamp Type
	10MAN11577	4"	1-56/64"	5"	Stainless Steel	Medium-Duty
	10MAN11578	5"	3-8/64"	6"	Stainless Steel	Medium-Duty
	10MAN11579	6"	3-40/64"	6-32/64"	Stainless Steel	Medium-Duty



## DUCT HOSE


### Hose B: Pressure Cabinet Hopper to Reclaimer



### PRESSURE CABINET TO RECLAIMER HOSES

Part Number	Cabinet CFM	Hose I.D.	Hose Length	Hose Type
10MAN16040RL	300	4"	8 Ft.	Heavy-Duty
10MAN16050RL	600	5"	8 Ft.	Heavy-Duty
10MAN16060RL	900	6"	10 Ft.	Heavy-Duty

### HEAVY-DUTY HOSE CLAMPS

	Part Number	Hose I.D.	Clamp Min	Clamp Max	Clamp Material	Clamp Type
	10MAN11567	4"	4.13"	4.44"	Plated Steel	Heavy-Duty
	10MAN11568	5"	5.13"	5.44"	Plated Steel	Heavy-Duty
	10MAN11569	6"	6.25"	6.56"	Plated Steel	Heavy-Duty

## OPTIONAL ACCESSORIES

Part Numbers	BLAST CABINET WEAR KITS		
	MODEL	CFM	Included Items
10MAN16701	3026	300	Rubber Lined Return Hose, Tungsten Carbide Nozzle, 1/16" Gum Rubber Drapings (Sides and Back)
10MAN16703	3626	300	
10MAN16704	3636	600	
10MAN16705	4826	300	
10MAN16706	4826	600	
10MAN16707	4836	600	
10MAN16708	4836	900	
10MAN16709	4848	600	
10MAN16710	4848	900	

Additional configurations available. Contact Allredi.

PART NUMBER	DUST COLLECTOR FILTERS			
	Filter Type	Cabinet CFM	Dust Collector Inlet	Filter Length
10MAN11501	Dust Bag	300	5"	
10MAN11502	Dust Bag	600	6"	
10MAN11506	Cartridge	1200, 3000, 6000		36"

# DUST COLLECTORS

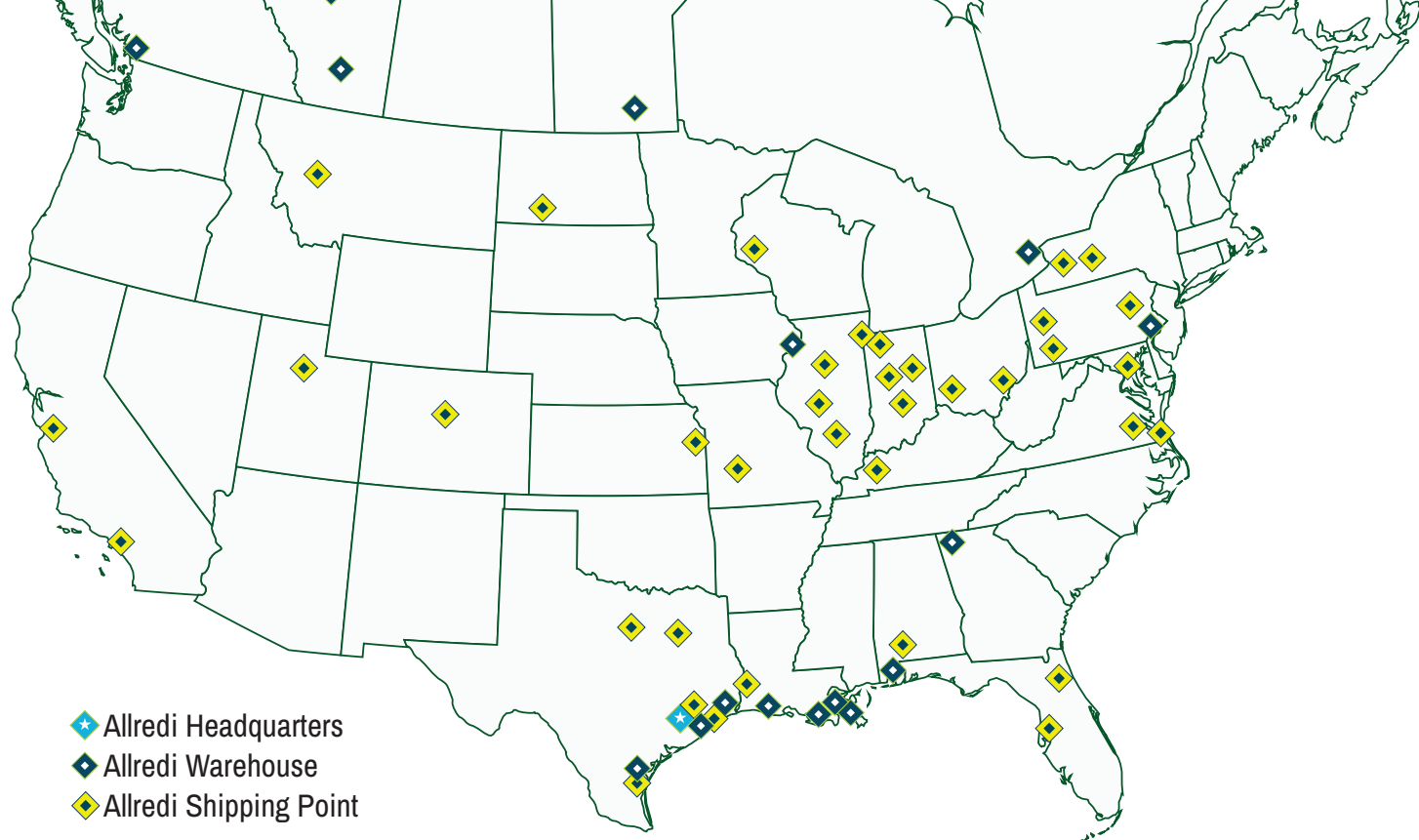
CABINET MODEL	DUST COLLECTORS		
	CFM	Dry Filter	Reverse Pulse Dust Collector
10MANM300FH	300	X	
10MANM600FH	600	X	
10MANM900FH	900	X	
10MANM1200FH	1200	X	
10MANM3001C	300		X
10MANM6002C	600		X
10MANM9002C	900		X



**62C Dust Collector**  
600 CFM, 2 Filter Cartridges  
Reverse Pulse



**6FH/9FH Filter Hopper  
Dust Collector**



## ALLREDI THERE

Serving these industries: Bridge, Pipeline, Tank & Tower, Concrete Services, Rail, Shipyard & Marine, Pools & Fountains, and Foundry

### UNITED STATES

**Pasadena, TX** (*Headquarters*)  
844.361.7038

**Beaumont, TX**  
409.722.1284

**Bristol, PA**  
215.826.8080

**Corpus Christi, TX**  
361.887.2038

**Davenport, IA**  
563.324.2519

**Deer Park, TX**  
(*Service & Rental Location*)  
281.930.0905

**Duluth, GA**  
800.535.4564

**Gonzales, LA**  
225.647.7575

**Harvey, LA**  
504.367.8090

**Houma, LA**  
985.580.4273

**Lafayette, LA**  
337.267.1440

**Theodore, AL**  
251.338.7525

### CANADA

**Calgary, Alberta**  
403.279.1924

**Coquitlam, BC**  
604.464.6979

**Edmonton, Alberta**  
780.468.2588 (Manus)  
780.425.5510 (Mod-U-Blast)

**Hamilton, Ontario**  
905.527.6000 / 888.794.5665

**Mississauga, Ontario**  
905.890.5837

**Winnipeg, Manitoba**  
204.256.3324

**800.BLAST.IT / WWW.ALLREDI-US.COM**

Allredi™ and Marco® are registered trademarks of Allredi, LLC.  
All other brand names or marks are used for identification purposes and are trademarks of their respective owners.

**ALLREDI™**

Literature #MUBP1611\_1/30/2024