



MOD-U-BLAST® E-SERIES BLAST CABINETS



MOD-U-BLAST®



PART NUMBERS AND SCHEMATICS GUIDE

Company Profile

Allredi was formed in the early 2020, when two of the largest distributors in the blasting, coating, safety, and environmental industry, APE Companies and Marco Group International, joined forces. While the qualities both companies are known for have not changed, a lot about our business is new. New abilities. New agilities. New ways to help you win. This calls for a new name, Allredi.

This name exemplifies what we have become. It is completely oriented to the needs of our customers. To your needs. It says that when you call us for anything – products, service, expert advice, anything – you can consider it done. Or even better, Allredi done.

We are your right-now supplier. From skills to SKUs, we deliver the goods fast. So you can be more agile every minute, every day. This is who we are. This is what our new name means. Go ahead and expect excellence, because we're bringing it.

Our Mission and Vision

To be the industry's preferred partner in surface preparation solutions through unrivaled technical expertise, customer experience, product availability, and tailored service offerings.

The Allredi Difference

- **Industry Experience** – With Allredi on your team, you have access to expertise which can only come from decades of industry leadership. We have organized our engineering department, production specialists, customer operations, and safety support into a "Center of Competence." As an Allredi customer, you have access to hundreds of years of cumulative experience related to your operations.
- **Manufacturing Excellence** – Allredi is a U.S. based manufacturer of equipment for the Surface Preparation and Protective Coatings industries. Allredi's engineers benchmark the industry to ensure that we design and manufacture superior products that set the "Gold Standard" for performance, safety, and quality.
- **Legendary Customer Service** – Allredi's legendary customer service team is staffed by friendly, highly-trained individuals who are focused on providing the highest level of product support, order accuracy, and customer satisfaction.
- **Product Availability** – We stock over 10,000 SKU's and have over 45 shipping locations to serve North American and International markets for all major brands of blasting, coating, environmental, and safety equipment. Allredi is your right-now supplier, so you can keep your projects moving. From our foundation of strong relationships, we have built a nationwide network that puts vast inventory and ready service close to our customers. We provide advanced expertise, and we deliver the goods fast – so you can easily access the products and services you need to me more agile every minute, every day.
- **Technology Leadership** – Our website provides: Operator's Manuals, Part Numbers and Schematics Guides, SDS information, and key product features and specifications, providing access to information 24/7.

TABLE OF CONTENTS

Company Profile	1
Table of Contents	2
Mod-U-Blast® E-Series Blast Cabinets .	3-12
Choosing a Blast Cabinet.	3-4
Mod-U-Blast E-Series Specifications	5
Part Numbers	6
Part Numbers & Schematics	7-18
E-Series Cabinet Parts	7-8
E-Series Dust Collector	9
Suction Guns	10
Suction Gun Schematics	11-12
Maintenance Notes	13-14

BLAST CABINETS QUALIFYING QUESTIONS

When considering a purchase of a Mod-U-Blast® Cabinet we would recommend reviewing the following guide to ensure that your expectations are aligned with the correct configuration.

Determining the Cabinet Size

The most important factor is to make sure the parts you typical blast will fit through the door to the cabinet. Allow enough room to be able to freely move the part and provide adequate space between the part and walls. We suggest 10–18" around all sides that need to be blasted. This helps reduce wear on the walls from abrasive rebound.

Frequency of use:

One main consideration when choosing a cabinet is the frequency of use.

How often will you be using the cabinet?

All of our cabinets are built to a high quality standard, however, some are built for heavier usage than others.

- **Mod-U-Blast P-Series Blast Cabinets:** Daily use, industrial applications
- **Mod-U-Blast S-Series Blast Cabinets:** Frequent use, but not a primary function of your daily work
- **Mod-U-Blast E-Series Blast Cabinet:** Occasional, light-duty use, small shops

Do you need a pressure or a suction configuration?

Another major consideration when choosing a blast cabinet is whether your main objective is production or efficiency. While we all want to get our work done as fast as possible, budget can be restrictive to choosing the fastest option.

All Mod-U-Blast Cabinets are built to operate efficiently, however some are built to provide a higher level of production.

- **Pressure Systems** utilize a blast pot to force abrasive in to the blast stream. Typically 30%-50% more powerful than suction systems, but also use 30%-40% more compressed air. This setup is ideal for applications where the user will be blasting high volume of parts, using the blast cabinet frequently, or have heavy coatings or mil scale to remove from the parts.
- **Suction Systems** use compressed air to create a venturi effect that pulls abrasive in to the blast stream. Simple design that is easy to service and troubleshoot with less compressed air consumption. This setup is commonly used for light shop work with lower production volume requirements.

BLAST CABINETS QUALIFYING QUESTIONS

Selecting a Reclaimer

Get the most out of your abrasive by reclaiming, cleaning, and reintroducing it in to your operating mix. Reclaimers are available on either Pressure or Suction systems and reduce abrasive consumption while providing the best possible finish every time. Reclaimers also reduce clogging and dust in your cabinets by removing large particles and fines from the abrasive.

Engineered and designed to precision, the Mod-U-Blast® tunable media reclaimer is unequalled in performance. Separation of the blast media, over sized foreign matter, and dust becomes as accurate as possible in a cyclone-type reclaim system. Equipped with replaceable wear plate.

Selecting a Dust Collector

All abrasive blasting generates dust that needs to be removed from the blasting area. A Dust Collector is a device designed to remove dust and debris from the air in the area being blasted.

There are two main types of dust collectors available to add to your blast cabinet system.

- **Bag style** use long socks to filter the air as it passes through the system. The dust collects on the exterior of the bags where it remains until the unit is turned off when the bags are shaken to release the collected material.
- **Cartridge-style** dust collectors use pleated cartridges to filter the air as it passes through the system. The material collects on the outside of the cartridge and released, while it is still in use, by a pulse of compressed air that is forced into the inside of the filter. Cartridge-style dust collectors are the cleanest option available and will be the most effective. Dust collector filter cartridges are available in different materials depending on level of air quality desired.

What power source will you be working with?

- Mod-U-Blast blast cabinets are available in either single phase or 3-phase.

What is your volume of available compressed air?

- Cabinet type and nozzle size will determine the amount of compressed air that you will need. All nozzle charts reflect the air requirements based on new nozzles. We suggest moving up in 1 size to reflect the compressed air requirement as the nozzle nears the end of its intended usage.
- Pressure Systems will require more compressed air than Suction Systems

MOD-U-BLAST E-SERIES BLAST CABINET

An economical state-of-the-art machine, at a price any shop can afford. E-Series blast cabinets come standard with industrial quality, rugged components typically found only on higher production machines. E-Series blast cabinets are designed for use with glass bead sand can tackle a wide variety of projects. This series is very popular in the automotive industry and any other environment where consistent, professional results are needed with a minimal up front cost.



10E3624DC

MOD-U-BLAST® S-SERIES BLAST CABINETS – SPECIFICATIONS	
Pistol-grip Blasting Gun	Foot Pedal Operated
14-Gauge Steel Legs	Natural Rubber/Vinyl Gloves
Perforated Steel Flooring	External LED Lighting System
Large-Particle Separating Screen	Front, Left, Right Doors Standard
Adjustable Regulator/Gauge Panel	Durable Powder Coating Inside & Out

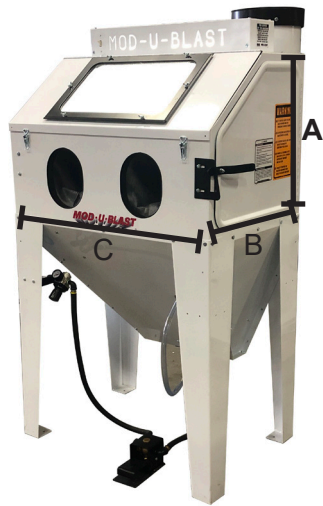
PART NUMBERS

MOD-U-BLAST E-SERIES PRESSURE BLAST CABINETS

CABINET MODEL	CFM	100 CFM Dust Collector	Work Space Dimensions			Empty Weight (lbs)
			A (H)	B (W)	C (D)	
10MANE3624-DC	300	10MAN16550RP	24	36	24	235
10MANE4824-DC	300	10MAN16550RP	24	48	24	277

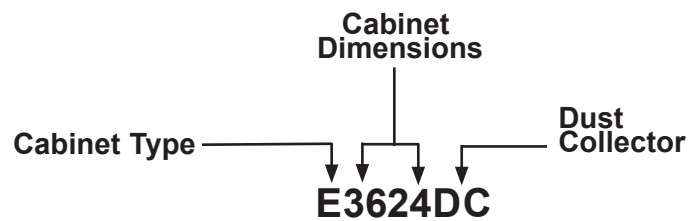
*stocked/on order to stock

Additional configurations available. Contact Allredi.



BLAST CABINET PART NUMBER BREAKDOWN

All cabinets are 40 inches tall.



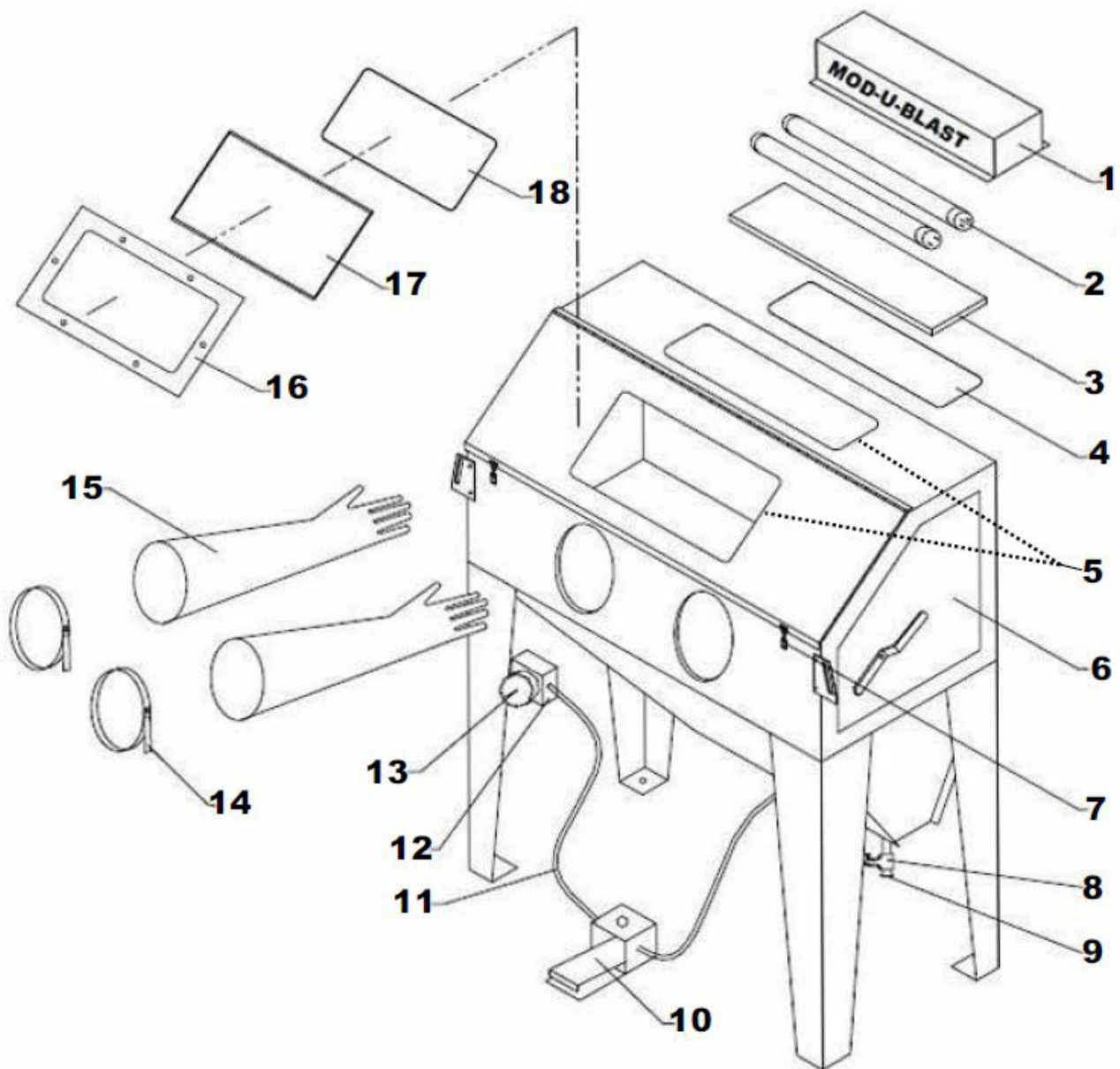
PART NUMBERS & SCHEMATICS

Figure 1: E-Series Cabinet Parts

Item #	Part #	Description
Fig. 1		
1	16366	Lamp Housing
2	16367	LED Tubes (<i>One Each</i>)
3	12215A	Lamp Window
4	43518S	Single Window Protector
5	16540	Trim Lok Window Seal
6	12434	Door Gasket
7	ZCATCH	Front Door
8	16025	Metering Valve
9	12011	Metering Valve Plug
10	16190M	1/2" Foot Pedal
11	12PUSH	1/2" Push-on Air Hose
—	12MED	1/2" Clear Media Hose (<i>Not Shown</i>)
12	50330	3/8" Regulator
13	55415	1/4" Pressure Gauge
14	12535	8" Glove Clamp
15	15250	Gloves (<i>Pair</i>)
16	16053	Window Frame Cover
17	12216	Safety Window
18	41117S	Single Window Protector

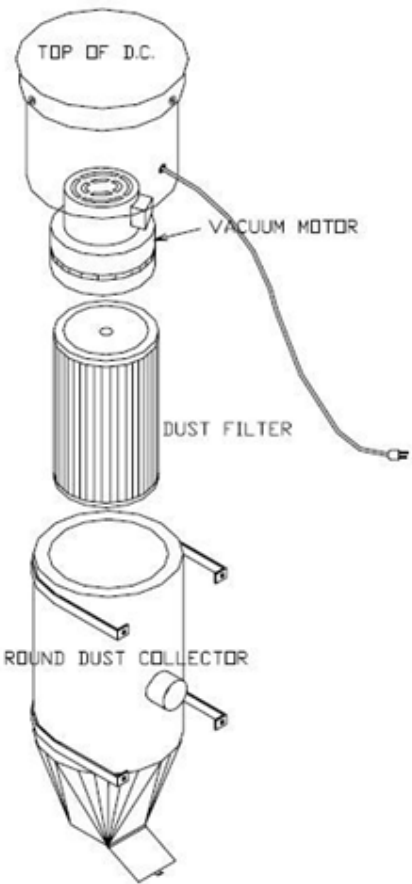
PART NUMBERS & SCHEMATICS

Figure 1: E-Series Cabinet Parts



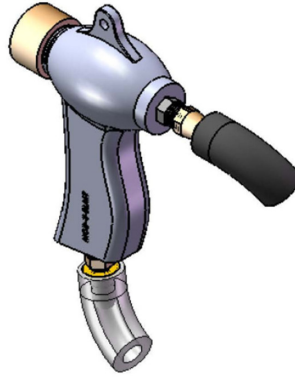
PART NUMBERS & SCHEMATICS

Figure 2: E-Series Dust Collector



Item #	Part #	Description
Fig. 2		
—	10MAN16550RP	E-Series Dust Collector
—	16560	Replacement Motor <i>(Fits 1016550RP Dust Collector)</i>
—	1016565	Dust Collector Filter Cartridge <i>(Fits 1016550RP Dust Collector)</i>

PART NUMBERS & SCHEMATICS



PART NUMBER	MOD-U-BLAST SUCTION GUNS			
	Size	Ceramic	Tungsten Carbide	Boron Carbide
12300	#3.5	X		
12301	#4	X		
12302	#5	X		
12304	#6	X		
12301T	#4		X	
12302T	#5		X	
12303T	#6		X	
12302B	#5			X
12303B	#6			X

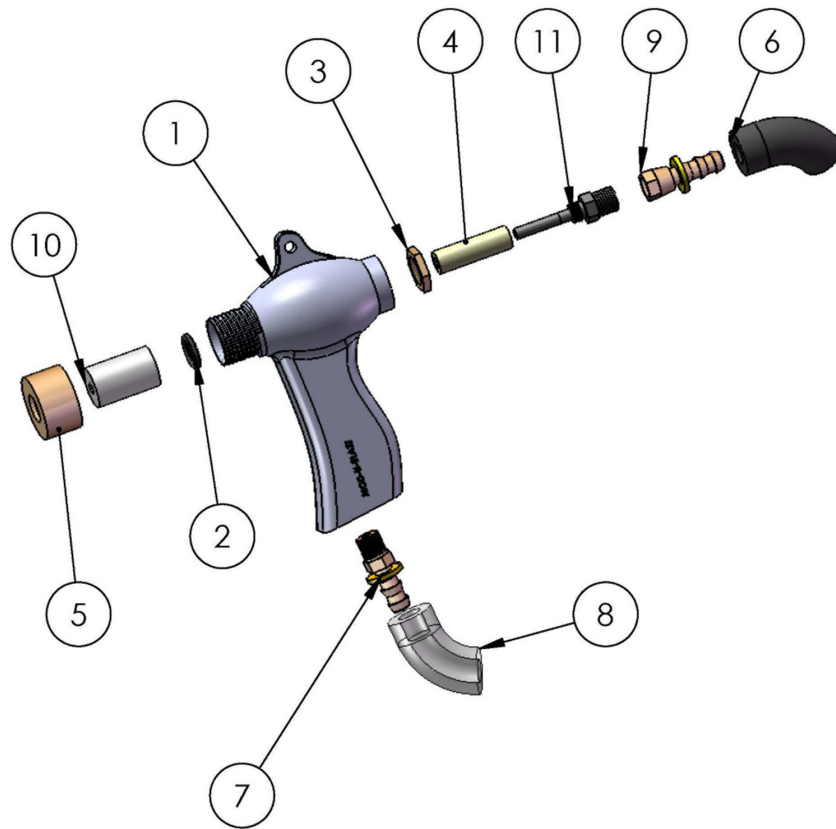
PART NUMBERS & SCHEMATICS

Figure 3: Mod-U-Blast Suction Gun

Item #	Part #	Description
Fig. 3		
1	11802	Mod-U-Blast Gun Body
2	12031	Nozzle O-Ring
3	11913	Air Jet Hex Nut
4	11913	Air Jet Sleeve
5	11914	Nozzle Holder, Brass Nut
6	12PUSH	1/2" Media Hose
7	11724	3/8" Lock Barb Fitting (<i>Air Inlet</i>)
8	12MED	1/2" Clear Media Hose
9	11723	3/8" Swivel Fitting (<i>Air Inlet</i>)
10	36664	#4 Ceramic Nozzle
—	36665	#5 Ceramic Nozzle
—	36666	#6 Ceramic Nozzle
—	35934	#4 Boron Carbide Nozzle
—	35935	#5 Boron Carbide Nozzle
—	35936	#6 Boron Carbide Nozzle
11	12341	#3.5 Air Jet
—	12342	#4 Air Jet
—	12343	#5 Air Jet
—	12344	#6 Air Jet

PART NUMBERS & SCHEMATICS

Figure 3: Mod-U-Blast Suction Gun

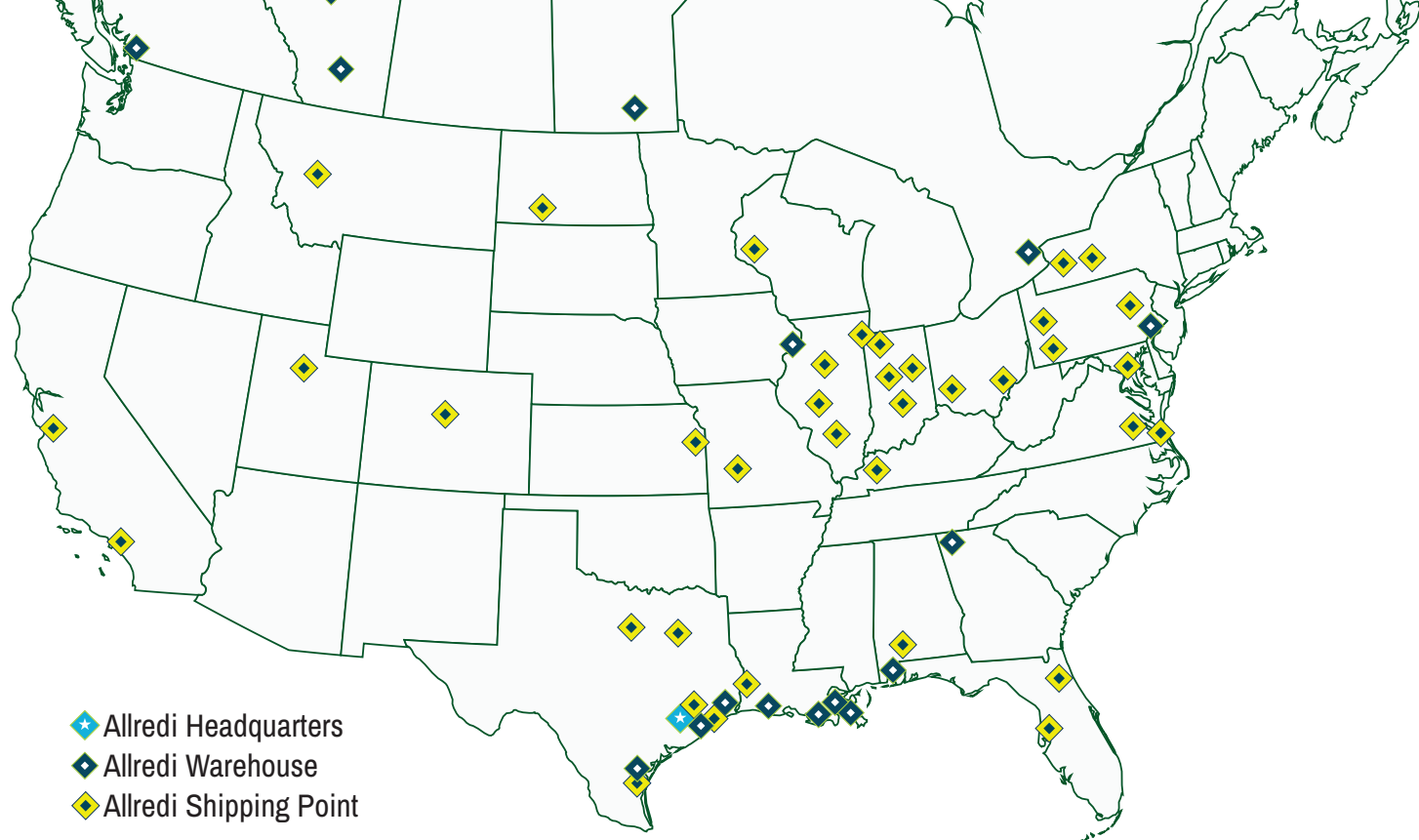


MAINTENANCE NOTES

[illegible]

MAINTENANCE NOTES

[illegible]



ALLREDI THERE

Serving these industries: Bridge, Pipeline, Tank & Tower, Concrete Services, Rail, Shipyard & Marine, Pools & Fountains, and Foundry

UNITED STATES

Pasadena, TX (*Headquarters*)
844.361.7038

Beaumont, TX
409.722.1284

Bristol, PA
215.826.8080

Corpus Christi, TX
361.887.2038

Davenport, IA
563.324.2519

Deer Park, TX
(*Service & Rental Location*)
281.930.0905

Duluth, GA
800.535.4564

Gonzales, LA
225.647.7575

Harvey, LA
504.367.8090

Houma, LA
985.580.4273

Lafayette, LA
337.267.1440

Theodore, AL
251.338.7525

CANADA

Calgary, Alberta
403.279.1924

Coquitlam, BC
604.464.6979

Edmonton, Alberta
780.468.2588 (Manus)
780.425.5510 (Mod-U-Blast)

Hamilton, Ontario
905.527.6000 / 888.794.5665

Mississauga, Ontario
905.890.5837

Winnipeg, Manitoba
204.256.3324

800.BLAST.IT / WWW.ALLREDI-US.COM

Allredi™ and Marco® are registered trademarks of Allredi, LLC.
All other brand names or marks are used for identification purposes and are trademarks of their respective owners.

ALLREDI™

Literature #MUBE1806_1/30/2024