



# MONTI BRISTLE BLASTER®



**PART NUMBERS AND SCHEMATICS GUIDE**

## Company Profile

Allredi was formed in the early 2020, when two of the largest distributors in the blasting, coating, safety, and environmental industry, APE Companies and Marco Group International, joined forces. While the qualities both companies are known for have not changed, a lot about our business is new. New abilities. New agilities. New ways to help you win. This calls for a new name, Allredi.

This name exemplifies what we have become. It is completely oriented to the needs of our customers. To your needs. It says that when you call us for anything – products, service, expert advice, anything – you can consider it done. Or even better, Allredi done.

We are your right-now supplier. From skills to SKUs, we deliver the goods fast. So you can be more agile every minute, every day. This is who we are. This is what our new name means. Go ahead and expect excellence, because we're bringing it.

## Our Mission and Vision

To be the industry's preferred partner in surface preparation solutions through unrivaled technical expertise, customer experience, product availability, and tailored service offerings.

## The Allredi Difference

- **Industry Experience** – With Allredi on your team, you have access to expertise which can only come from decades of industry leadership. We have organized our engineering department, production specialists, customer operations, and safety support into a "Center of Competence." As an Allredi customer, you have access to hundreds of years of cumulative experience related to your operations.
- **Manufacturing Excellence** – Allredi is a U.S. based manufacturer of equipment for the Surface Preparation and Protective Coatings industries. Allredi's engineers benchmark the industry to ensure that we design and manufacture superior products that set the "Gold Standard" for performance, safety, and quality.
- **Legendary Customer Service** – Allredi's legendary customer service team is staffed by friendly, highly-trained individuals who are focused on providing the highest level of product support, order accuracy, and customer satisfaction.
- **Product Availability** – We stock over 10,000 SKU's and have over 45 shipping locations to serve North American and International markets for all major brands of blasting, coating, environmental, and safety equipment. Allredi is your right-now supplier, so you can keep your projects moving. From our foundation of strong relationships, we have built a nationwide network that puts vast inventory and ready service close to our customers. We provide advanced expertise, and we deliver the goods fast – so you can easily access the products and services you need to me more agile every minute, every day.
- **Technology Leadership** – Our website provides: Operator's Manuals, Part Numbers and Schematics Guides, SDS information, and key product features and specifications, providing access to information 24/7.

# TABLE OF CONTENTS

<b>Company Profile</b> .....	<b>2</b>
<b>Table of Contents</b> .....	<b>3</b>
<b>MONTI Bristle Blaster®</b> .....	<b>4-9</b>
Part Numbers .....	4-5
Part Numbers & Schematics .....	6-9
MONTI Bristle Blaster® – Pneumatic .....	6-7
MONTI Bristle Blaster® – Electric .....	8-9
<b>Optional Accessories</b> .....	<b>10-12</b>
Replacement Bristle Belts .....	10
Adapter Systems .....	10
Replacement Accelerator Bars .....	11
Sharpening Stone .....	11
Air Pressure Regulators .....	12
Swivel Connectors .....	12
Dust Exhaust .....	12
<b>Maintenance Notes</b> .....	<b>13-15</b>

# PART NUMBERS & SCHEMATICS GUIDE

<b>Part Numbers</b>	<b>MONTI BRISTLE BLASTER® ASSEMBLY - PNEUMATIC</b>			
	Power Source	Belt Material	Belts	Storage Case
10MTUSSP0602	Pneumatic	Carbon Steel	Five – 11mm Five – 23mm	X



**10MTUSSP0602**

# PART NUMBERS & SCHEMATICS GUIDE

Part Numbers	MONTI BRISTLE BLASTER® ASSEMBLY - ELECTRIC			
	Power Source	Belt Material	Belts	Storage Case
10MTSE116002	120-Volt	Carbon Steel	Five – 11mm Five – 23mm	X
10MTSE66902	120-Volt	Stainless Steel	Five – 11mm Five – 23mm	X



**10MTSE116002**



**10MTSE66902**

# PART NUMBERS & SCHEMATICS GUIDE

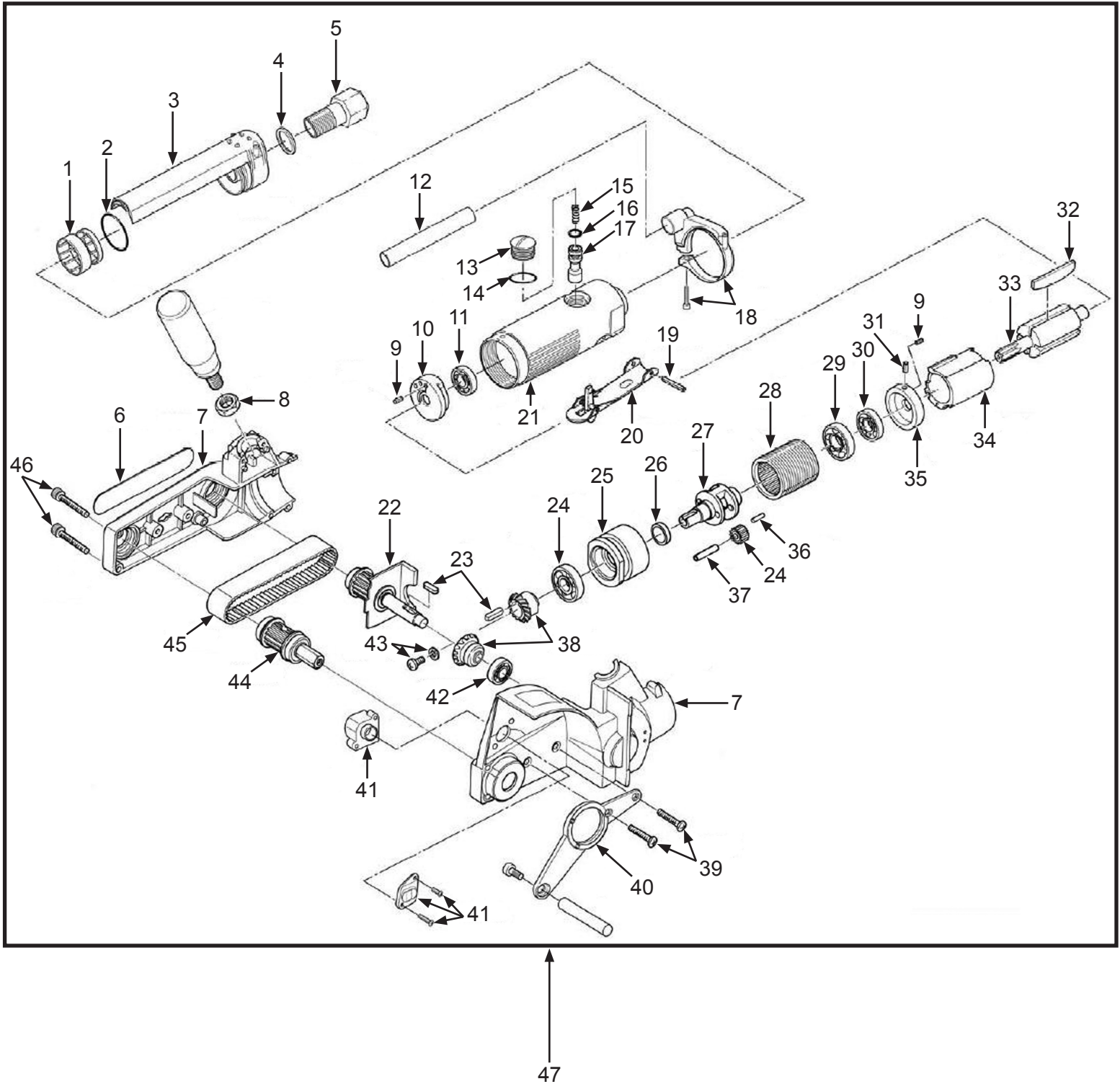
## MONTI Bristle Blaster® – Pneumatic

Item #	Part #	Description
<b>Fig. 1</b>		
—	<b>10MTSP653</b>	<b>Bristle Blaster - Pneumatic</b>
1	10MT30564	Silencer Element
2	10MT30558	O-Ring
3	10MT30559	Crescent Pipe
4	10MT30557	Washer
5	10MT30556	Air Inlet Bolt
6	10MT30586	Plastic Label
7	10MT30592	Plastic Housing Blaster
8	10MT30533	Nut
9	10MT30517	Cylinder Pin
10	10MT30516	Rear End Plate
11	10MT30515	Ball Bearing
12	10MT30561	Pipe
13	10MT30539	Valve Nut
14	10MT30502	O-Ring
15	10MT30505	Valve Spring
16	10MT30506	O-Ring
17	10MT30507	Valve Stem
18	10MT30560	Pipe Transformer
19	10MT30510	Lever Pin
20	10MT30571	Throttle Lever
21	10MT30552	Air Motor Housing
22	10MT30595	Drive Shaft Sub Assembly
23	10MT30566	Housing Cap
24	10MT30528	Idle Gear
	10MT30526	Ball Bearing
25	10MT30566	Housing Cap
26	10MT30583	Spacer
27	10MT30565	Planet Cage
28	10MT30575	Internal Gear
29	10MT30523	Ball Bearing
30	10MT30522	Ball Bearing
31	10MT30534	Roll Pin
32	10MT30518	Rotor Blade
33	10MT30519	Rotor
34	10MT30520	Cylinder
35	10MT30574	Front End Plate
36	10MT30527	Needle Roller ( <i>Pack of 22</i> )
37	10MT30529	Idle Gear Pin

Item #	Part #	Description
38	10MT30576	Bevel Gear Set ( <i>Quantity of Two</i> )
39	10MT30587	Tapping Screw Set ( <i>Quantity of Two</i> )
40	10MT30593	Blaster Arm
41	10MT30562	Nozzle Set ( <i>Quantity of Two</i> )
42	10MT30536	Ball Bearing
43	10MT30545	Screw
44	10MT30596	Spindle Sub Assembly ( <i>Quantity of Two</i> )
45	10MT30579	Toothed Belt
46	10MT30587	Tapping Screw Set ( <i>Quantity of Two</i> )
47	—	Pneumatic MONTI Bristle Blaster® Drive Unit <i>Bristle Belts Not Included</i>
—	10MT30951	Bristle Blaster® Repair Kit ( <i>Includes Item #'s: 11, 22, 38, and 43</i> )
—	101V034	Brochure – MONTI Bristle Blaster®
—	106M404	Part Numbers and Schematics Guide – MONTI Bristle Blaster®
—	109V016	Operator's Manual – Montipower Pneumatic MONTI Bristle Blaster®

# PART NUMBERS & SCHEMATICS GUIDE

Figure 1: MONTI Bristle Blaster® – Pneumatic



## PART NUMBERS & SCHEMATICS GUIDE

### MONTI Bristle Blaster® – Electric

Item # Part # Description

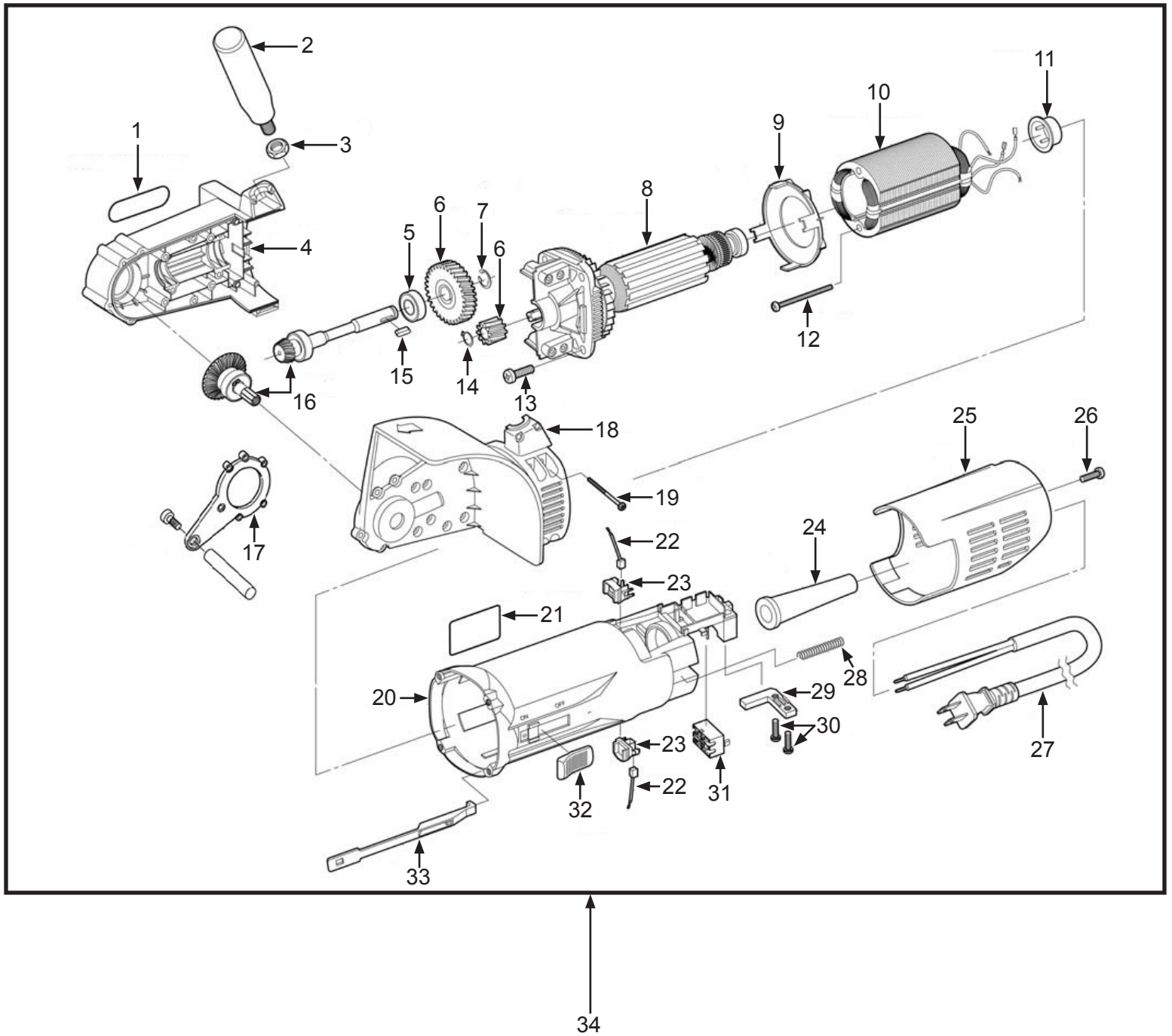
**Fig. 2**

—	<b>10MTSE661</b>	<b>Bristle Blaster - Electric</b>
1	10MT33281	Elliptical Label 3200
2	10MT30550	Handle
3	10MT30533	Hex-Nut
4	10MT32317	Front Housing ( <i>Quantity of Two</i> )
5	10MT30522	Ball Bearing
6	10MT32323	Helical Gear Set with Retainer Ring
7	10MT32124	Retainer Ring E-Style
8	10MT32960L	Rotor 3200 rpm – 120-Volt
9	10MT32129	Fan Guide
10	10MT32961L	Stator 3200 rpm – 120-Volt
11	10MT32131	Bearing Cap
12	10MT32230	Screw Set
13	10MT32227	Bearing Bracket Screw ( <i>Quantity of Four</i> )
14	10MT32125	Retainer Ring C-Style
15	10MT32121	Round Tip Key
16	10MT32920	Bevel and Pinion Gear Set ( <i>Quantity of Two</i> )
17	10MT32151	Blaster Arm
18	10MT32317	Front Housing ( <i>Quantity of Two</i> )
19	10MT32318	Screw Set
20	10MT32141	Motor Housing
21	10MT32782	Caution Label
22	10MT32249	Carbon Brush ( <i>Quantity of Two</i> )
23	10MT32232	Carbon Brush Holder ( <i>Quantity of Two</i> )
24	10MT32140	Cord Bush
25	10MT32142	Rear Motor Housing
26	10MT32143	Rear Housing Spring
27	10MT32144	Plug Cord
28	10MT32136	Spring
29	10MT32138	Cord Holdfast
30	10MT32239	Cord Holdfast Screw ( <i>Quantity of Two</i> )
31	10MT32137	Switch
32	10MT32135	Operating Handle
33	10MT32134	Connection Piece
34	—	Electric MONTI Bristle Blaster® Drive Unit <i>Bristle Belts Not Included</i>
—	106M404	Part Numbers and Schematics Guide – MONTI Bristle Blaster®
—	109V015	Operator's Manual – Montipower Electric MONTI Bristle Blaster®
—	101V034	Brochure – MONTI Bristle Blaster®











# PART NUMBERS & SCHEMATICS GUIDE

Figure 2: MONTI Bristle Blaster® – Electric







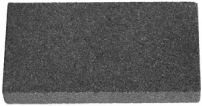
## OPTIONAL ACCESSORIES

<b>MONTI BRISTLE BLASTER® REPLACEMENT BRISTLE BELTS</b>					
	<b>Part Numbers</b>	<b>Bristle Material</b>	<b>Bristle Width</b>	<b>Ring Color</b>	<b>Package Quantity</b>
	<b>10MTBB034</b>	Carbon Steel	11mm	Red	One Each
	<b>10MTBB033</b>	Carbon Steel	23mm	Red	One Each
	<b>10MTBB103</b>	Stainless Steel	11mm	White	One Each
	<b>10MTBB102</b>	Stainless Steel	23mm	White	One Each



<b>MONTI BRISTLE BLASTER® ADAPTER SYSTEMS</b>				
	<b>Part Numbers</b>	<b>For Use With Bristle Width</b>	<b>Included With</b>	<b>Package Quantity</b>
	<b>10MTAS012</b>	11mm	Includes Allen Wrench, Allen Screw and Lock Washer	One Each
	<b>10MTAS009</b>	23mm	Includes Allen Wrench, Allen Screw and Lock Washer	One Each

## OPTIONAL ACCESSORIES


		<b>MONTI BRISTLE BLASTER® REPLACEMENT ACCELERATOR BARS</b>			
<b>Part Numbers</b>		Accelerator Bar Material	For Use With Bristle Width	Includes One Allen Screw and One Lock Washer	Package Quantity
	<b>10MTZU06105</b>	Carbon Steel	11mm	X	Five Each
	<b>10MTZU06005</b>	Carbon Steel	23mm	X	Five Each
	<b>10MTZU06305</b>	Stainless Steel	11mm	X	Five Each
	<b>10MTZU06205</b>	Stainless Steel	23mm	X	Five Each

		<b>SHARPENING STONE</b>
<b>Part Numbers</b>		Details
	<b>10MTZU003</b>	For Sharpening Bristle Blaster Belts

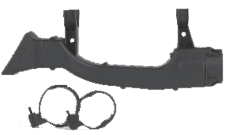
## OPTIONAL ACCESSORIES

		<b>MONTI BRISTLE BLASTER® AIR PRESSURE REGULATORS</b>			
<b>Part Numbers</b>	<b>For Use With Bristle Width</b>	<b>Thread</b>	<b>Pressure Rating</b>	<b>Package Quantity</b>	
 <b>10MTUSZU070*</b>	11mm	1/4" NPT	75 psi	One Each	
 <b>10MTUSZU071*</b>	23mm	1/4" NPT	90 psi	One Each	

*\*Only for Use with Pneumatic Drive Unit*

<b>Part Numbers</b>	<b>MONTI BRISTLE BLASTER® SWIVEL CONNECTOR</b>		
	<b>Thread</b>	<b>Rotation</b>	<b>Package Quantity</b>
 <b>10MTUSZU073*</b>	1/4" NPT	360°	One Each

*\*Only for Use with Pneumatic Drive Unit*

<b>Part Numbers</b>	<b>DUST EXHAUST</b>
	<b>Details</b>
 <b>10MTZU021*</b>	Connects to External Industrial Vacuum Cleaner, Allowing for Effective Collection of Removed Material

*\*Only for Use with Pneumatic Drive Unit*









## ALLREDI THERE

Serving these industries: Bridge, Pipeline, Tank & Tower, Concrete Services, Rail, Shipyard & Marine, Pools & Fountains and Foundry

### UNITED STATES

**Pasadena, TX** (*Headquarters*)  
844.361.7038

**Beaumont, TX**  
409.722.1284

**Bristol, PA**  
215.826.8080

**Corpus Christi, TX**  
361.887.2038

**Davenport, IA**  
563.324.2519

**Deer Park, TX**  
(*Service & Rental Location*)  
281.930.0905

**Duluth, GA**  
800.535.4564

**Gonzales, LA**  
225.647.7575

**Harvey, LA**  
504.367.8090

**Houma, LA**  
985.580.4273

**Lafayette, LA**  
337.267.1440

**Theodore, AL**  
251.338.7525

### CANADA

**Calgary, Alberta**  
403.279.1924

**Coquitlam, BC**  
604.464.6979

**Edmonton, Alberta**  
780.468.2588 (Manus)  
780.425.5510 (Mod-U-Blast)

**Hamilton, Ontario**  
905.527.6000 / 888.794.5665

**Mississauga, Ontario**  
905.890.5837

**Winnipeg, Manitoba**  
204.256.3324

**800-252-7848 / WWW.ALLREDI-US.COM**

Allredi™ and Marco® are registered trademarks of Allredi, LLC.  
All other brand names or marks are used for identification purposes and are trademarks of their respective owners.

**ALLREDI™**

Literature #106M404\_3/2/2023