



MARCO® 750 CFM AIR DRYER



PART NUMBERS AND SCHEMATICS GUIDE

Company Profile

Allredi was formed in the early 2020, when two of the largest distributors in the blasting, coating, safety, and environmental industry, APE Companies and Marco Group International, joined forces. While the qualities both companies are known for have not changed, a lot about our business is new. New abilities. New agilities. New ways to help you win. This calls for a new name, Allredi.

This name exemplifies what we have become. It is completely oriented to the needs of our customers. To your needs. It says that when you call us for anything – products, service, expert advice, anything – you can consider it done. Or even better, Allredi done.

We are your right-now supplier. From skills to SKUs, we deliver the goods fast. So you can be more agile every minute, every day. This is who we are. This is what our new name means. Go ahead and expect excellence, because we're bringing it.

Our Mission and Vision

To be the industry's preferred partner in surface preparation solutions through unrivaled technical expertise, customer experience, product availability, and tailored service offerings.

The Allredi Difference

- **Industry Experience** – With Allredi on your team, you have access to expertise which can only come from decades of industry leadership. We have organized our engineering department, production specialists, customer operations, and safety support into a “Center of Competence.” As an Allredi customer, you have access to hundreds of years of cumulative experience related to your operations.
- **Manufacturing Excellence** – Allredi is a U.S. based manufacturer of equipment for the Surface Preparation and Protective Coatings industries. Allredi's engineers benchmark the industry to ensure that we design and manufacture superior products that set the “Gold Standard” for performance, safety, and quality.
- **Legendary Customer Service** – Allredi's legendary customer service team is staffed by friendly, highly-trained individuals who are focused on providing the highest level of product support, order accuracy, and customer satisfaction.
- **Product Availability** – We stock over 10,000 SKU's and have over 45 shipping locations to serve North American and International markets for all major brands of blasting, coating, environmental, and safety equipment. Allredi is your right-now supplier, so you can keep your projects moving. From our foundation of strong relationships, we have built a nationwide network that puts vast inventory and ready service close to our customers. We provide advanced expertise, and we deliver the goods fast – so you can easily access the products and services you need to me more agile every minute, every day.
- **Technology Leadership** – Our website provides: Operator's Manuals, Part Numbers and Schematics Guides, SDS information, and key product features and specifications, providing access to information 24/7.

TABLE OF CONTENTS

Company Profile	2
Table of Contents	3
Part Numbers	4
Specifications	5
Part Numbers & Schematics	6-19
Marco® 750 CFM Air Dryer	6-7
Marco® 750 CFM Air Dryer	8-9
Marco® 750 CFM Air Dryer	10-11
Aftercooler Assembly—Pneumatic	12
Aftercooler Assembly—Electric	13
Transfer Hose Assembly	14
Inlet Filter Assembly	15
Air Regulator/Lubricator	16
Inspection Door Assembly	17
Outlet Filter	18
Desiccant Tablets and Spherical Tower Packing ...	19
Optional Accessories	19-21
Desiccant Tablets	19
Spherical Tower Packing	19
Airflow Shutoff Kits – Lug Fittings	20
Airflow Shutoff Kits – Hammerlock Fittings	20
Inlet/Outlet Bushing	21
Pressure Relief Valves	21
Pipe Plugs	21
Lubrication	21
Maintenance Notes	22-23

PART NUMBERS

Part Numbers	MARCO® 750 CFM AIR DRYER								
	Inlet			Outlet			Power Source	Filter, Regulator, and Lubricator	Electric Starter Box
	Inlet Quantity	Inlet Size	Fittings	Outlet Quantity	Outlet Size	Fittings			
10101675	1	3"	Not Included	5	(2) 3", (1) 1-1/4", (2) 1"	Not Included	Pneumatic	Included	Not Included
10108809	1	3"	Not Included	5	(2) 3", (1) 1-1/4", (2) 1"	Not Included	115-Volt AC	Not Included	Included
10101676	1	3"	Not Included	5	(2) 3", (1) 1-1/4", (2) 1"	Not Included	230-Volt AC	Not Included	Included

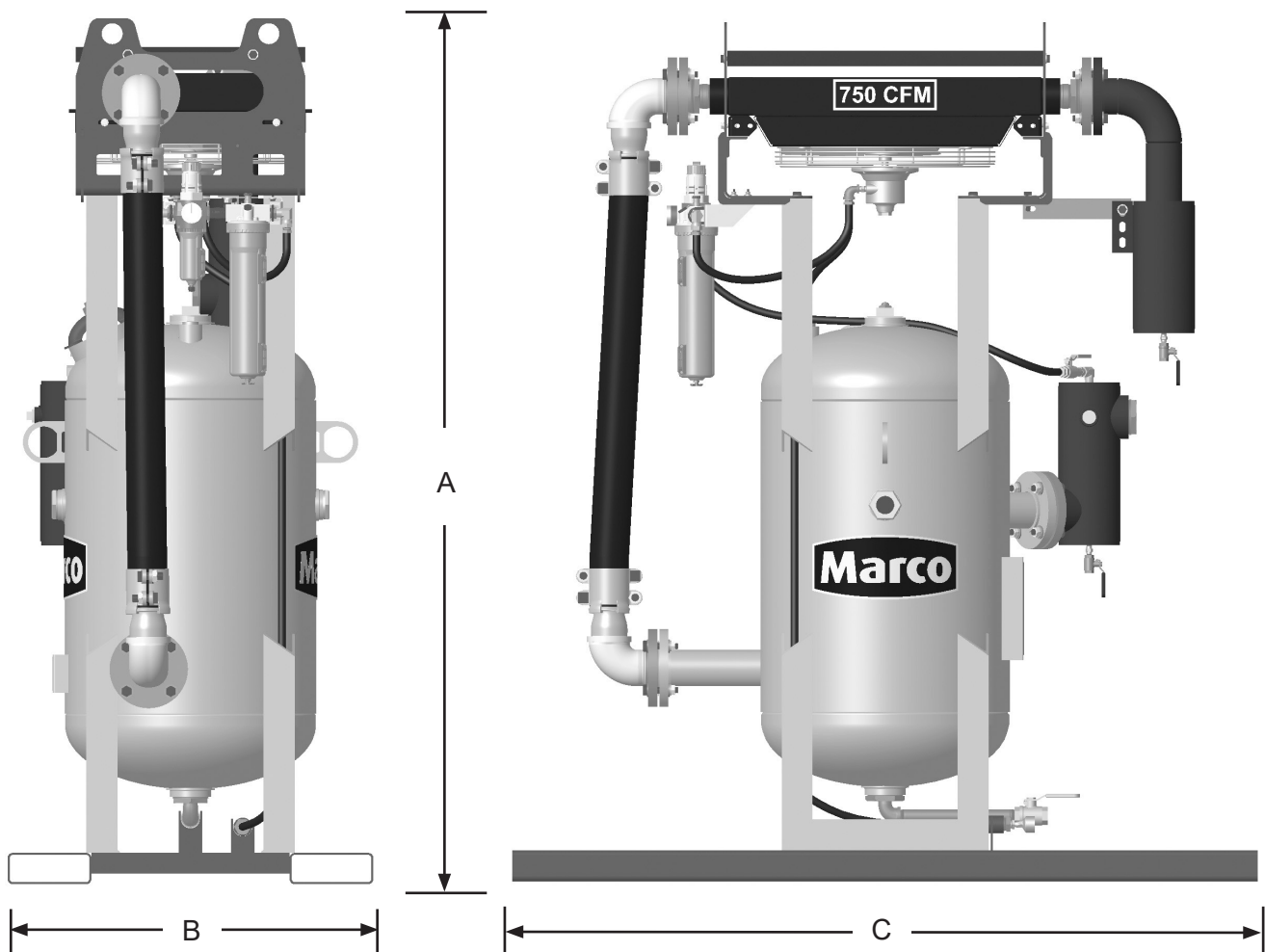
Dessicant tablets not included with Marco® 750 CFM Air Dryers

SPECIFICATIONS

Lubrication: SAE 10 oil or Air Tool Anti-freeze Lubricant

Empty Weight: 900 Pounds

Overall Dimensions: A: 83"
B: 35"
C: 72"



Pneumatic model shown. Electric model has same dimensions.

PART NUMBERS & SCHEMATICS

Marco® 750 CFM Air Dryer—Pneumatic

Item #	Part #	Description
Fig. 1		
—	10101675	Marco® 750 CFM Air Dryer – Pneumatic
1	10101176	400-1600 CFM Heat Exchanger Mounting Bracket <i>(Two Required)</i>
2	10101943	1/2-13 x 1-3/4" Hex Bolt Galvanized <i>(10 Required)</i>
3	10100674	1/2" Flat Washer Galvanized <i>(20 Required)</i>
4	10100675	1/2" Split Lock Washer Galvanized <i>(10 Required)</i>
5	10101941	1/2-13 Hex Nut Galvanized <i>(10 Required)</i>
6	10101179	Heat Exchanger Protective Grate
7	10TTAHP7255	750 CFM Aftercooler - Pneumatic - Complete (See Fig. 4)
8	10101059	3/8-16 x 1-1/4" Bolt Galvanized <i>(Four Required)</i>
9	10101942	3/8" Flat Washer Galvanized <i>(Eight Required)</i>
10	10L805015	3/8" Lock Washer Galvanized <i>(Four Required)</i>
11	10101938	3/8 -16 Hex Nut Galvanized <i>(Four Required)</i>
12	—	Transfer Hose Assembly (See Fig. 6)
13	10101185	1/2" x 1/4" 90° Reducing Elbow <i>(Two Required)</i>
14	10AH012	1/2" I.D. Air Hose <i>(Per Foot)</i>
15	1011902	1-1/4" NPT Plug
16	—	Inspection Door Assembly (See Fig. 9)
17	10101688	2" NPT Sight Glass
18	1011801	1" NPT Street Elbow
19	10101064	1" X 12" NPT Pipe Nipple
20	1011601	1" NPT Full Port Ball Valve
21	10101784	Aftercooler Exhaust Muffler – 250 CFM–750 CFM
22	1011818	1/2" x 1/4" Galvanized Bushing

Item #	Part #	Description
23	1011812	1" Male x 1/2" Female Bushing
24	10PAF050	1/2" Push on Air Hose Fitting <i>(Six Required)</i>
25	1017019	1/4" x 1/4" Hex Nipple <i>(Two Required)</i>
26	—	Outlet Filter Assembly (See Fig. 10)
27	10SAP1290	1/2" 90° Swivel <i>(Three Required)</i>
28	20100677	1/2" NPT Hex Nipple
29	10101024	Skid Weldment
30	10L363	1/2" NPT Full Port Ball Valve
31	10101034	3" NPT Galvanized Pipe Plug
32	10105890	Filter/Regulator/Lubricator with Pressure Gauge (See Fig. 8)
33	10101170	Moisture Separator Brace
34	—	Inlet Filter Assembly (See Fig. 7)
35	—	Desiccant Tablets - <i>Not Included</i> (See Fig. 11)
36	10103922	Spherical Tower Packing (See Fig. 11)
37	10107495	1/2-13 x 1-5/8" Grade 8 Hex Bolt Zinc <i>(Four Required)</i>
38	10107496	1/2-13 Grade 8 Lock Nut Zinc <i>(Four Required)</i>
39	10104711	1/2" Grade 8 Flat Washer Zinc <i>(Eight Required)</i>
40	10108281	Mounting Bracket
41	10105903	1/4-20 x 1-1/4" Hex Bolt <i>(Four Required)</i>
42	10101939	1/4-20 Stainless Steel Lock Nut with Nylon Insert <i>(Four Required)</i>
43	10101940	1/4" Flat Washer <i>(12 Required)</i>
44	10109052	U-Bolt <i>(Two Required)</i>
45	1094536	750 CFM Product Sticker
—	1070517	Pneumatic Tool Oil — 32 oz.

Figure 1: Marco® 750 CFM Air Dryer—Pneumatic



PART NUMBERS AND SCHEMATICS

Marco® 750 CFM Air Dryer—115 Volt Electric

Item #	Part #	Description	Item #	Part #	Description
Fig. 2			25	—	Desiccant Tablets - <i>Not Included (See Fig. 11)</i>
—	10108809	Marco® 750 CFM Air Dryer – 115 Volt Electric	26	10103922	Spherical Tower Packing (<i>See Fig. 11</i>)
1	10101176	400-1600 CFM Heat Exchanger Mounting Bracket (<i>Two Required</i>)	27	20101197	3/4" NPT Cord Grip
2	10101943	1/2-13 x 1-3/4" Hex Bolt Galvanized (<i>10 Required</i>)	28	10108830	Motor Starter Bracket
3	10100674	1/2" Flat Washer Galvanized (<i>20 Required</i>)	29	10103303	3/4" Conduit Hub (<i>Two Required</i>)
4	10100675	1/2" Split Lock Washer Galvanized (<i>10 Required</i>)	30	10103304	3/4" Flexible Conduit
5	10101941	1/2-13 Hex Nut Galvanized (<i>10 Required</i>)	31	1012154	1/4-20 x 1" Hex Bolt Zinc (<i>Four Required</i>)
6	10101179	Heat Exchanger Protective Grate	32	1014017	1/4" Flat Washer Zinc (<i>Eight Required</i>)
7	10TTAHP7252	750 CFM Aftercooler Assembly - Electric - Complete (<i>See Fig. 5</i>)	33	1012323	1/4"-20 Lock Nut Zinc (<i>Four Required</i>)
8	10101059	3/8-16 x 1-1/4" Bolt Galvanized (<i>Six Required</i>)	34	10107495	1/2-13 x 1-5/8" Grade 8 Hex Bolt Zinc (<i>Four Required</i>)
9	10101942	3/8" Flat Washer Galvanized (<i>Twelve Required</i>)	35	10107496	1/2-13 Grade 8 Lock Nut Zinc (<i>Four Required</i>)
10	10L805015	3/8" Lock Washer Galvanized (<i>Six Required</i>)	36	10104711	1/2" Grade 8 Flat Washer Zinc (<i>Eight Required</i>)
11	10101938	3/8-16 Hex Nut Galvanized (<i>Six Required</i>)	37	10101024	Skid Weldment
12	—	Transfer Hose Assembly (<i>See Fig. 6</i>)	38	1094536	750 CFM Product Sticker
13	10108792	1 Phase Electric Motor Starter - 3 HP to 5 HP	—	10108798	Thermal Unit - Full Load Current 16.2 - 17.6 Amps
14	1011902	1-1/4" NPT Plug	—	106M116	Part Numbers and Schematics Guide – Marco® 750 CFM Air Dryer
15	—	Inspection Door Assembly (<i>See Fig. 9</i>)	—	1090116	Operator's Manual – Marco® 750 CFM Air Dryer
16	10101688	2" NPT Sight Glass	—	1091017	Hazard Identification Tag
17	1011801	1" NPT Street Elbow			
18	10101064	1" x 12" NPT Pipe Nipple			
19	1011601	1" NPT Full Port Ball Valve			
20	—	Outlet Filter (<i>See Fig. 10</i>)			
21	20G100737	1/2" NPT Pipe Plug			
22	10101034	3" NPT Galvanized Pipe Plug			
23	10101170	Moisture Separator Brace			
24	—	Inlet Filter (<i>See Fig. 7</i>)			

Figure 2: Marco® 750 CFM Air Dryer—115 Volt Electric



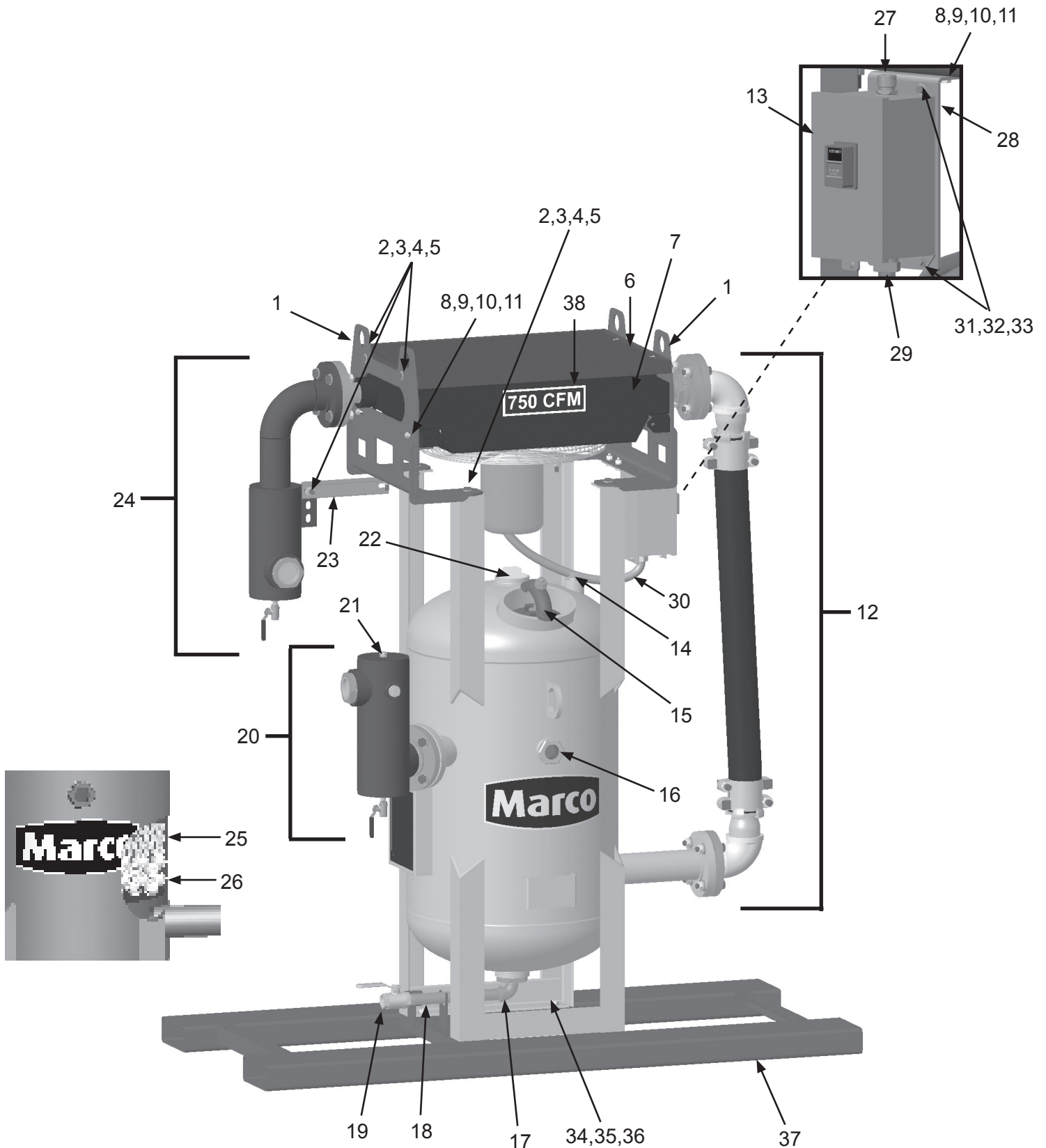
PART NUMBERS AND SCHEMATICS

Marco® 750 CFM Air Dryer—230 Volt Electric

Item #	Part #	Description
Fig. 3		
—	10101676	Marco® 750 CFM Air Dryer – 230 Volt Electric
1	10101176	400-1600 CFM Heat Exchanger Mounting Bracket <i>(Two Required)</i>
2	10101943	1/2-13 x 1-3/4" Hex Bolt Galvanized <i>(10 Required)</i>
3	10100674	1/2" Flat Washer Galvanized <i>(20 Required)</i>
4	10100675	1/2" Split Lock Washer Galvanized <i>(10 Required)</i>
5	10101941	1/2-13 Hex Nut Galvanized <i>(10 Required)</i>
6	10101179	Heat Exchanger Protective Grate
7	10TTAHP7252	750 CFM Aftercooler Assembly - Electric - Complete <i>(See Fig. 5)</i>
8	10101059	3/8-16 x 1-1/4" Bolt Galvanized <i>(Six Required)</i>
9	10101942	3/8" Flat Washer Galvanized <i>(Twelve Required)</i>
10	10L805015	3/8" Lock Washer Galvanized <i>(Six Required)</i>
11	10101938	3/8-16 Hex Nut Galvanized <i>(Six Required)</i>
12	—	Transfer Hose Assembly <i>(See Fig. 6)</i>
13	10101760	Electric Motor Starter Box – Single Phase
14	1011902	1-1/4" NPT Plug
15	—	Inspection Door Assembly <i>(See Fig. 9)</i>
16	10101688	2" NPT Sight Glass
17	1011801	1" NPT Street Elbow
18	10101064	1" x 12" NPT Pipe Nipple
19	1011601	1" NPT Full Port Ball Valve
20	—	Outlet Filter <i>(See Fig. 10)</i>
21	20G100737	1/2" NPT Pipe Plug
22	10101034	3" NPT Galvanized Pipe Plug
23	10101170	Moisture Separator Brace
24	—	Inlet Filter <i>(See Fig. 7)</i>

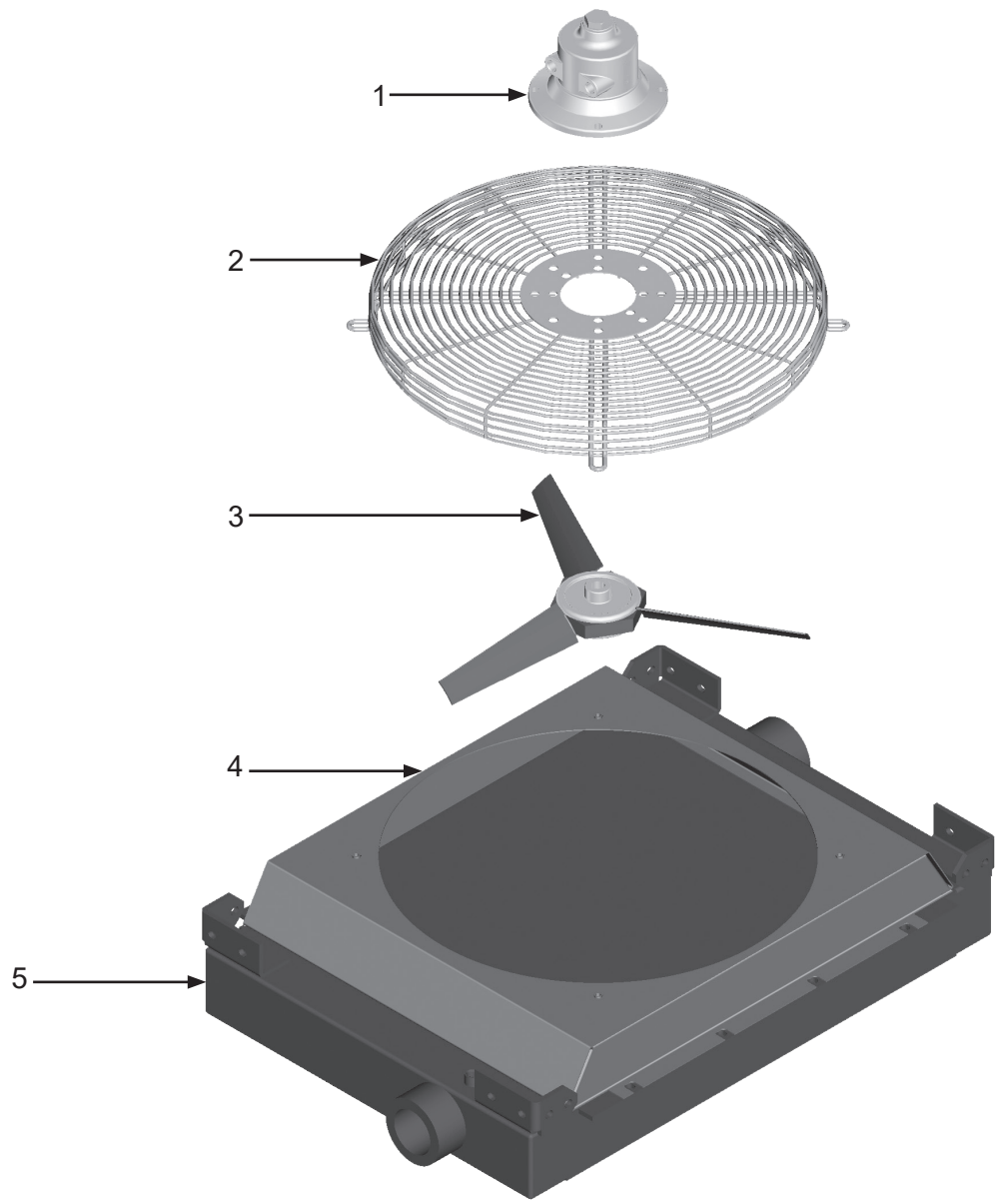
Item #	Part #	Description
25	—	Desiccant Tablets - <i>Not Included (See Fig. 11)</i>
26	10103922	Spherical Tower Packing <i>(See Fig. 11)</i>
27	20101299	3/4" NPT Cord Grip
28	10108830	Motor Starter Bracket
29	10103303	3/4" Conduit Hub <i>(Two Required)</i>
30	10103304	3/4" Flexible Conduit
31	1012154	1/4-20 x 1" Hex Bolt Zinc <i>(Four Required)</i>
32	1014017	1/4" Flat Washer Zinc <i>(Eight Required)</i>
33	1012323	1/4"-20 Lock Nut Zinc <i>(Four Required)</i>
34	10107495	1/2-13 x 1-5/8" Grade 8 Hex Bolt Zinc <i>(Four Required)</i>
35	10107496	1/2-13 Grade 8 Lock Nut Zinc <i>(Four Required)</i>
36	10104711	1/2" Grade 8 Flat Washer Zinc <i>(Eight Required)</i>
37	10101024	Skid Weldment
38	1094536	750 CFM Product Sticker
—	10108796	Thermal Unit - Full Load Current 8.48 - 9.83 Amps
—	106M116	Part Numbers and Schematics Guide – Marco® 750 CFM Air Dryer
—	1090116	Operator's Manual – Marco® 750 CFM Air Dryer
—	1091017	Hazard Identification Tag

Figure 3: Marco® 750 CFM Air Dryer—230 Volt Electric



PART NUMBERS AND SCHEMATICS

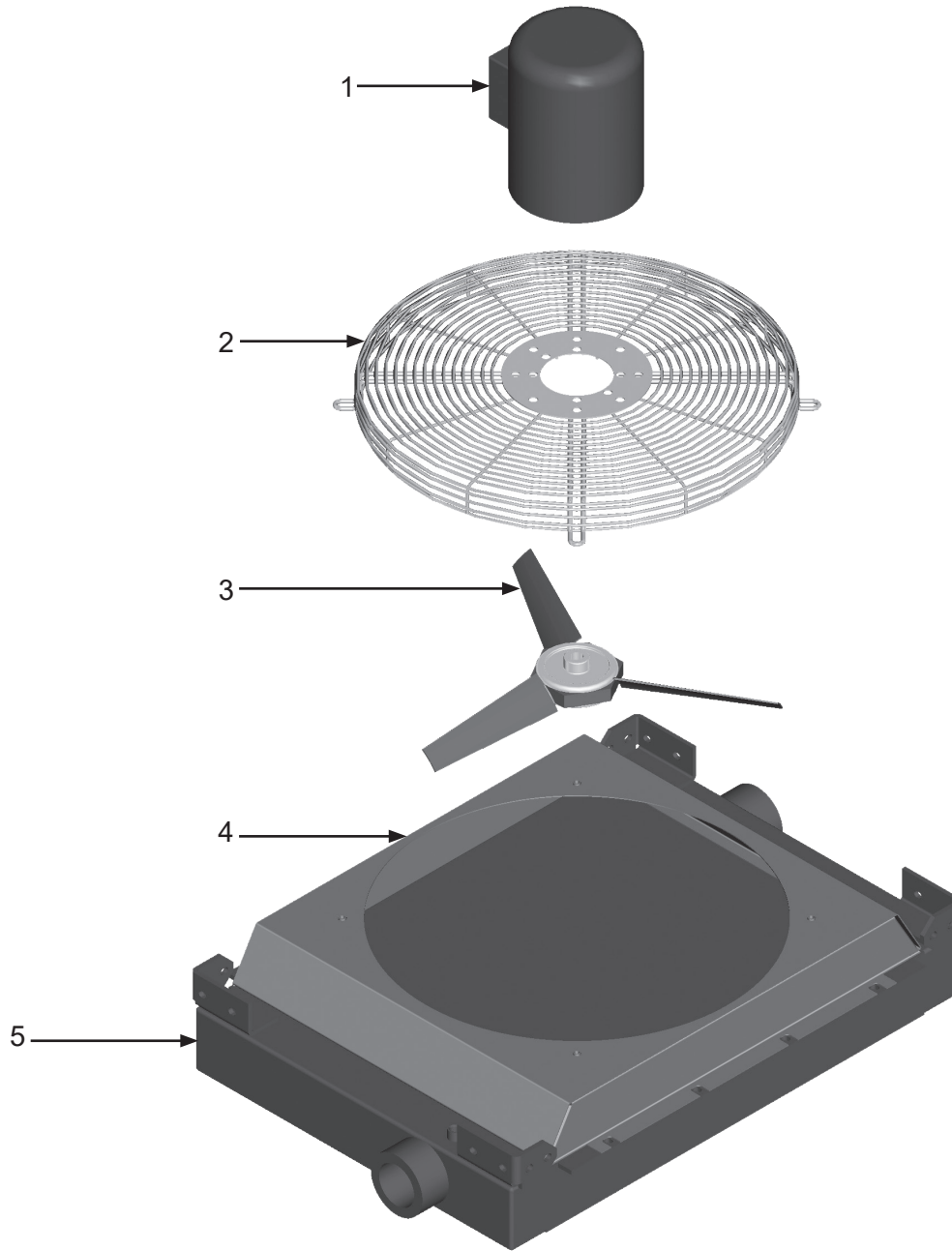
Figure 4: Aftercooler Assembly—Pneumatic



Item #	Part #	Description
Fig. 4		
—	10TTAHP7255	750 CFM Aftercooler—Pneumatic—Complete
1	10101780	Air Motor
2	10101792	Fan Guard
3	10101791	Fan Blade Assembly (Includes Blades and Hub)
4	10104171	Aftercooler Shroud
5	10101790	Aftercooler Core
—	10101781	Air Motor Service Kit (Includes: shaft seal, drive end bearing, dead end bearing, four vanes, four push pins, four vane springs, shim, end cap gasket, muffler cartridge, and muffler felt)

PART NUMBERS AND SCHEMATICS

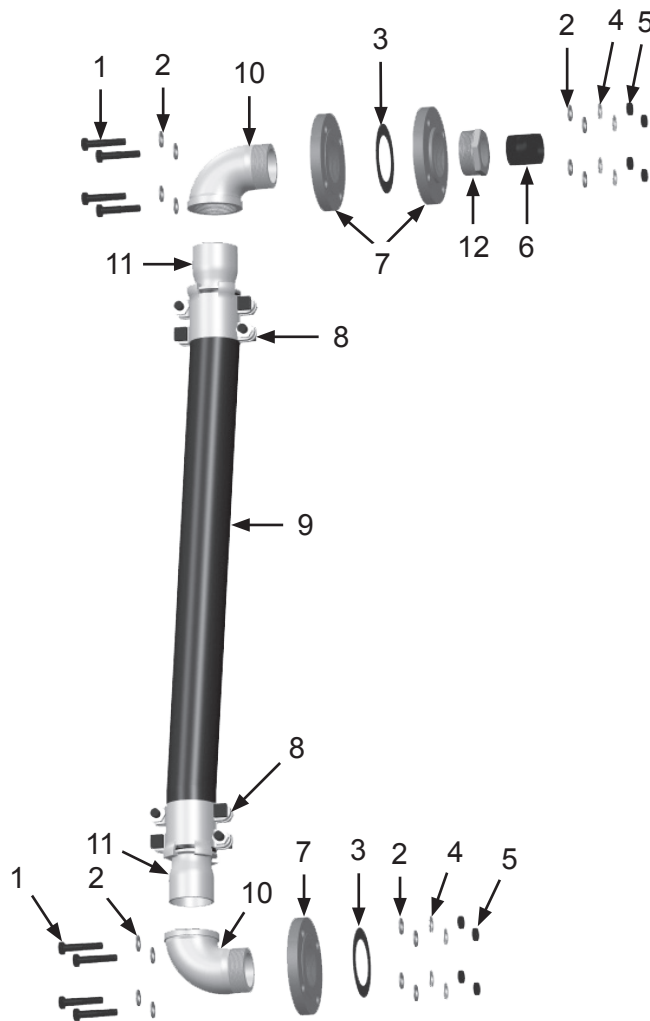
Figure 5: Aftercooler Assembly—Electric



Item #	Part #	Description
Fig. 5		
—	10TTAHP7252	750 CFM Aftercooler—Electric—Complete
1	10101793	Electric Motor – (115 Volt to 208-230 Volt) – Single Phase
2	10101792	Fan Guard
3	10101791	Fan Blade Assembly (Includes Blades and Hub)
4	10104171	Aftercooler Shroud
5	10101790	Aftercooler Core

PART NUMBERS AND SCHEMATICS

Figure 6: Transfer Hose Assembly



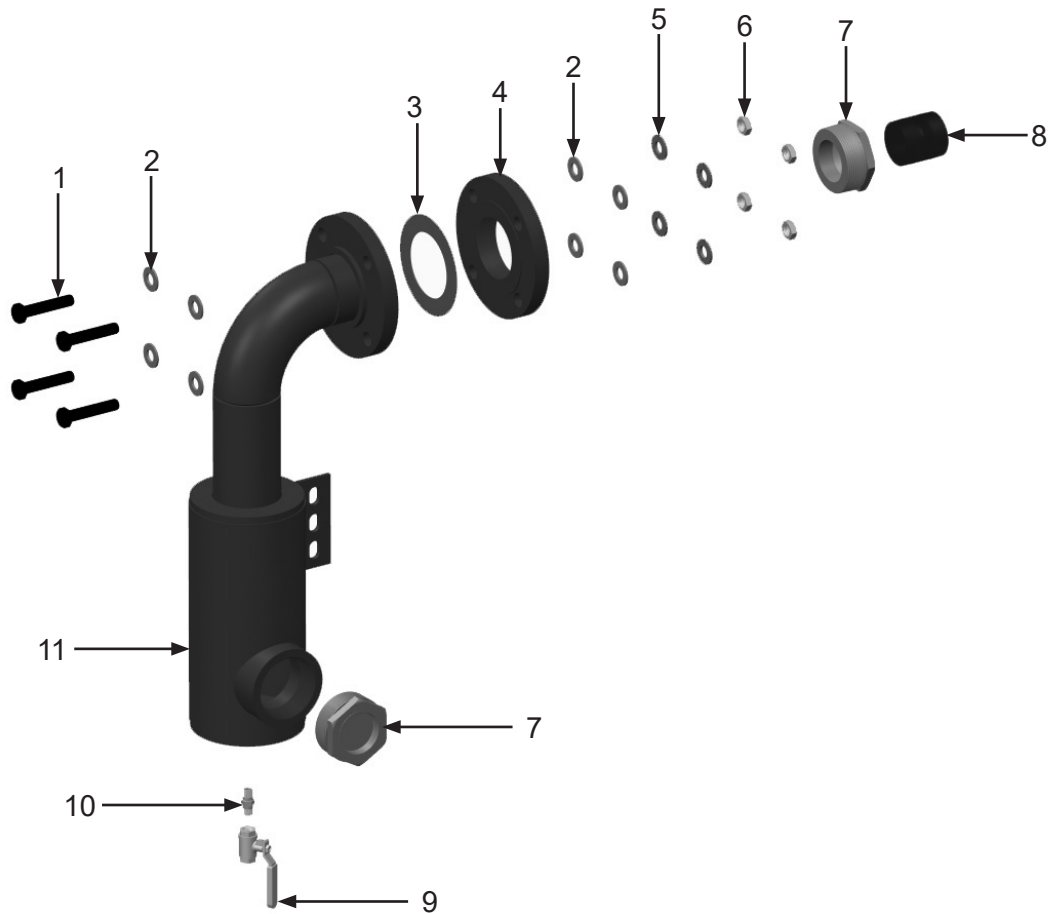
Item #	Part #	Description
--------	--------	-------------

Fig. 6

1	10101058	5/8-11 x 3" Grade 8 Bolt <i>(Eight Required)</i>
2	10101060	5/8" Flat Washer <i>(16 Required)</i>
3	10101047	Flange Gasket <i>(Two Required)</i>
4	10103399	5/8" Grade 8 Split Lock Washer <i>(Four Required)</i>
5	10103393	5/8-11 Grade 8 Hex Nut <i>(Four Required)</i>
6	1001806	2" NPT Close Nipple
7	10101041	3" NPT Threaded Flange <i>(Three Required)</i>
8	10BU35	3" Boss Clamp <i>(Two Required)</i>
9	10101045	3" x 2-1/2' Steel Reinforced Air Hose <i>(Per Foot)</i>
10	10101148	3" NPT Street Elbow <i>(Two Required)</i>
11	10101754	3" NPT Hose Stem <i>(Two Required)</i>
12	10101183	3" (M) x 2" (F) Bushing

PART NUMBERS AND SCHEMATICS

Figure 7: Inlet Filter Assembly



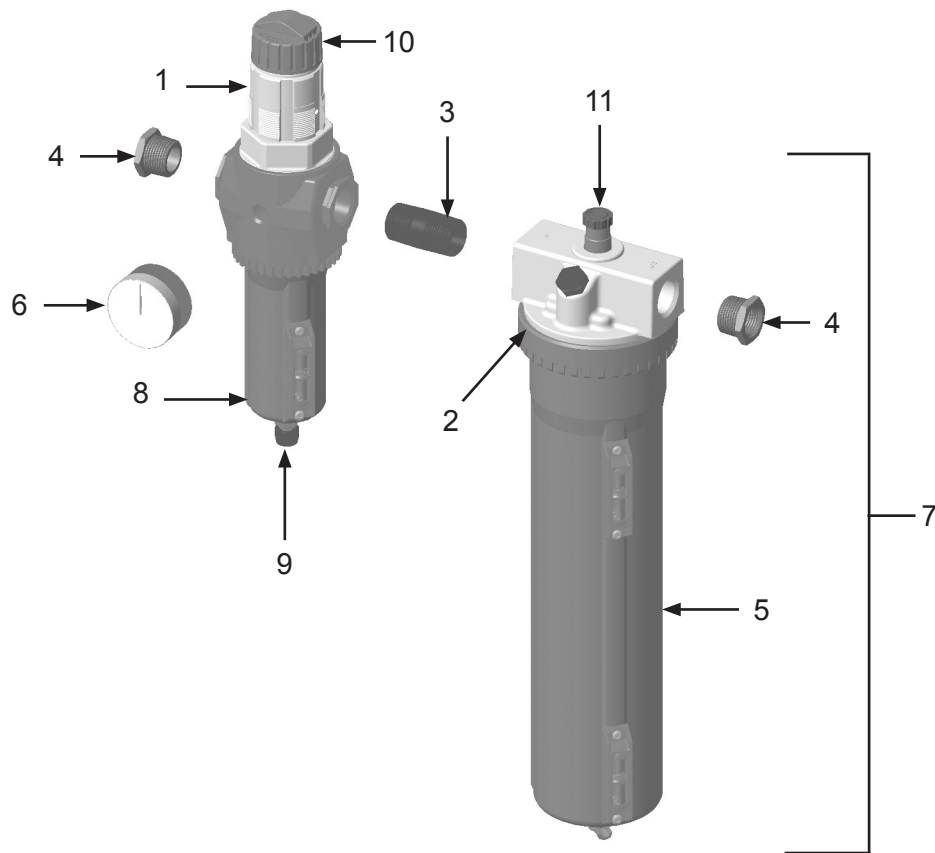
Item #	Part #	Description
--------	--------	-------------

Fig. 7

1	10101058	5/8-11 X 3" Grade 8 Bolt <i>(Four Required)</i>
2	10101060	5/8" Flat Washer <i>(Eight Required)</i>
3	10101047	Flange Gasket
4	10101041	3" NPT Threaded Flange
5	10103399	5/8" Grade 8 Split Lock Washer <i>(Four Required)</i>
6	10103393	5/8-11 Grade 8 Hex Nut <i>(Four Required)</i>
7	10101183	3" to 2" Bushing <i>(Two Required)</i>
8	1001806	2" NPT Close Nipple
9	1080050	1/4" NPT Full Port Ball Valve
10	1017019	1/4" NPT Hex Nipple
11	10101049	Inlet Moisture Separator

PART NUMBERS AND SCHEMATICS

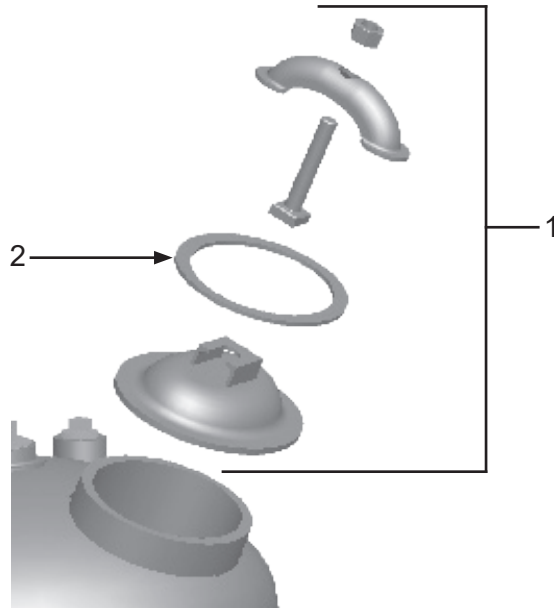
Figure 8: Air Filter/Regulator/Lubricator



Item #	Part #	Description
Fig. 8		
	10105890	Air Filter/Regulator/Lubricator with Pressure Gauge—Pneumatic—Complete
1	10SC10105891	Filter/Regulator - Complete
2	10106432	Large O-ring - Lubricator
3	10105894	3/4" x 2" Pipe Nipple
4	10105895	3/4" x 1/2" Reducing Bushing (<i>Two Required</i>)
5	10SC10106507	Extended Metal Bowl Kit for Lubricator (<i>Includes: 2 Sight Glasses and O-Ring</i>)
6	1028606	Pressure Gauge – 0-160 PSI 1/4" – Back Mount
7	10110133	Lubricator (<i>Includes #s: 2 and 5</i>)
8	10SWCABF115100	Metal Bowl Kit for Filter/Regulator (<i>Includes: Bowl, Sight Glass, Manual Drain, Nut, Knob, Clip, Retaining Ring and O-Rings</i>)
9	10SWCA80232	Manual Drain Kit for Filter/Regulator (<i>Includes: Drain, Nut, Knob, Clip and O-Ring</i>)
10	10SKA3762	Adjustment Knob for Filter/Regulator (<i>Includes: Adjusting Knob, Adjusting Key, Screw and Drive Nut</i>)
11	10106506	Cartridge Kit for Lubricator (<i>Includes: Adjusting Knob and Sight Dome</i>)
—	10106504	Diaphragm Kit for Filter/Regulator (<i>Includes: Diaphragm, Rest, Washer and O-Ring</i>)
—	1070517	Pneumatic Tool Oil - 32 oz.

PART NUMBERS AND SCHEMATICS

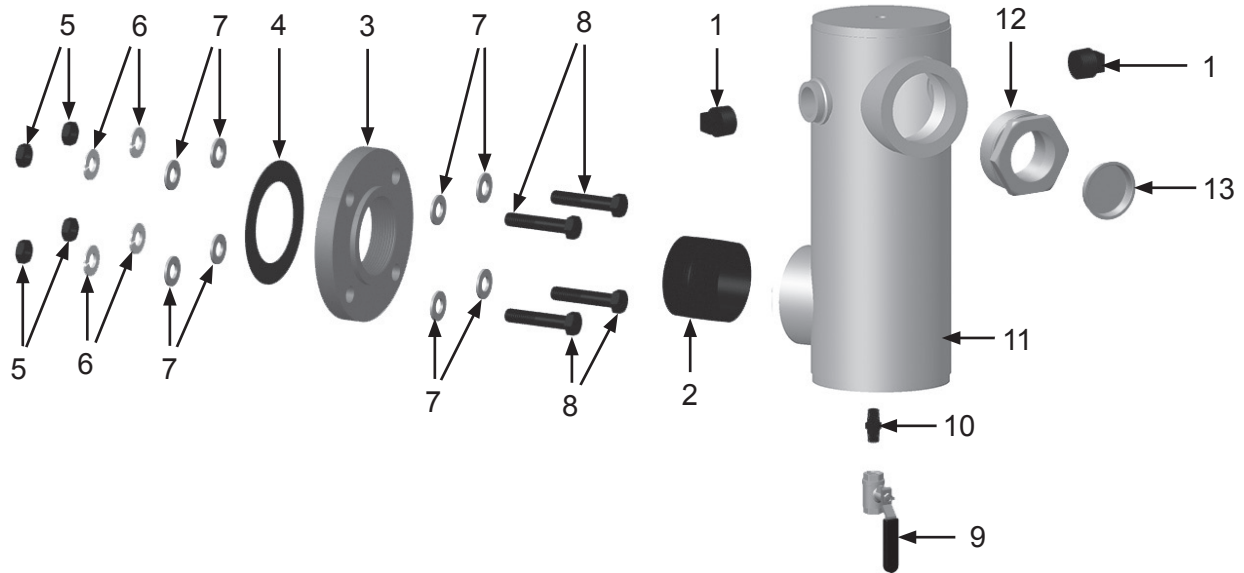
Figure 9: Inspection Door Assembly



Item #	Part #	Description
Fig. 9		
1	10106105	Air Dryer Inspection Door Assembly – Complete <i>Includes Item #2</i>
2	1006201	Inspection Door Gasket

PART NUMBERS AND SCHEMATICS

Figure 10: Outlet Filter



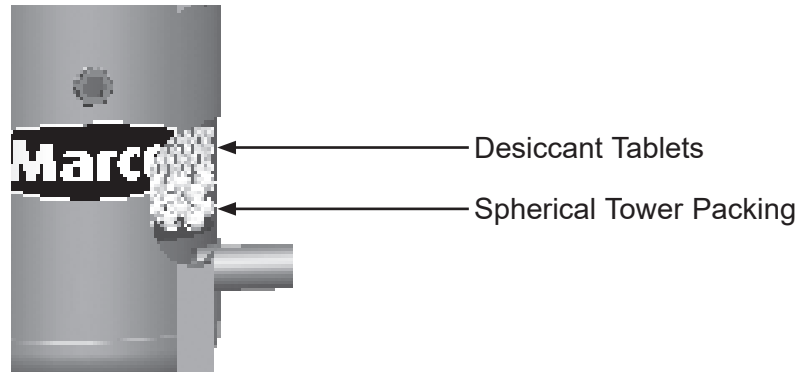
Item #	Part #	Description
--------	--------	-------------

Fig. 10

1	1011901	1" Galvanized Square Head Pipe Plug <i>(Two Required)</i>
2	10101040	3" Galvanized Close Nipple
3	10101041	Flange
4	10101047	Flange Gasket
5	10103393	5/8-11 Grade 8 Hex Nut <i>(Four Required)</i>
6	10103399	5/8" Lock Washer <i>(Four Required)</i>
7	10101060	5/8" x 1-5/16" Stainless Steel Flat Washer <i>(Eight Required)</i>
8	10101058	5/8-11 x 3" Grade 8 Hex Bolt <i>(Four Required)</i>
9	1080050	1/4" Ball Valve
10	1017019	1/4" x 1/4" Hex Nipple
11	10101686	Outlet Filter Body
12	10101183	3" (M) x 2" (F) Bushing
13	10101237	Transport Plug

OPTIONAL ACCESSORIES





Figure 11: Desiccant Tablets and Spherical Tower Packing








Part Numbers	DESICCANT TABLETS	
	Package Weight	Packaging
10V330311	50 pounds	Bag
15V330313	50 pounds	Pail
15V330203	506 pounds	Steel Drum
15V330284	2000 pounds	Bulk Bag

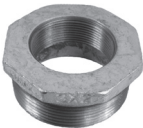
Part Numbers	SPHERICAL TOWER PACKING	
	Unit of Measure	
10103922	1 Cubic Foot	




OPTIONAL ACCESSORIES






		AIRFLOW SHUTOFF KITS – LUG FITTINGS			
	Part Numbers	Pipe String I.D.	Close Nipple	Full Port Ball Valve	Coupling
	10103731	1"	1012151	1011601	10ME2
	10103732	1-1/4"	1011201 (Quantity of Two)	1011602	10ME3
	10103733	1-1/2"	1014015 (Quantity of Two)	1011603	10ME4
	10103734	2"	1001806 (Quantity of Two)	1011604	10ME5

		AIRFLOW SHUTOFF KITS – HAMMERLOCK FITTINGS			
	Part Numbers	Pipe String I.D.	Close Nipple	Full Port Ball Valve	Coupling Spud
	10103830	1"	10102151 (Quantity of Two)	1011601	10DXGB13
	10103831	1-1/4"	1011201 (Quantity of Two)	1011602	10DXGB18
	10103832	1-1/2"	1014015 (Quantity of Two)	1011603	10DXGB23
	10103833	2"	1001806 (Quantity of Two)	1011604	10DXGB28
	10103934	3"	10101040 (Quantity of Two)	1011608	10GB38

OPTIONAL ACCESSORIES

	Part Numbers	INLET/OUTLET BUSHING
		Size
	10101183	Galvanized 3" MNPT x 2" FNPT Bushing

	Part Numbers	PRESSURE RELIEF VALVES	
		PSI	Inlet Size
	10E1POPOFF150	150	1"
	10EPOPOFF125	125	1-1/4"
	10EPOPOFF150	150	1-1/4"

	Part Numbers	GALVANIZED SQUARE HEAD PIPE PLUGS
		Size
	1011901	1"
	1011902	1-1/4"
	1011101	1-1/2"
	1011823	2"
	10101034	3"

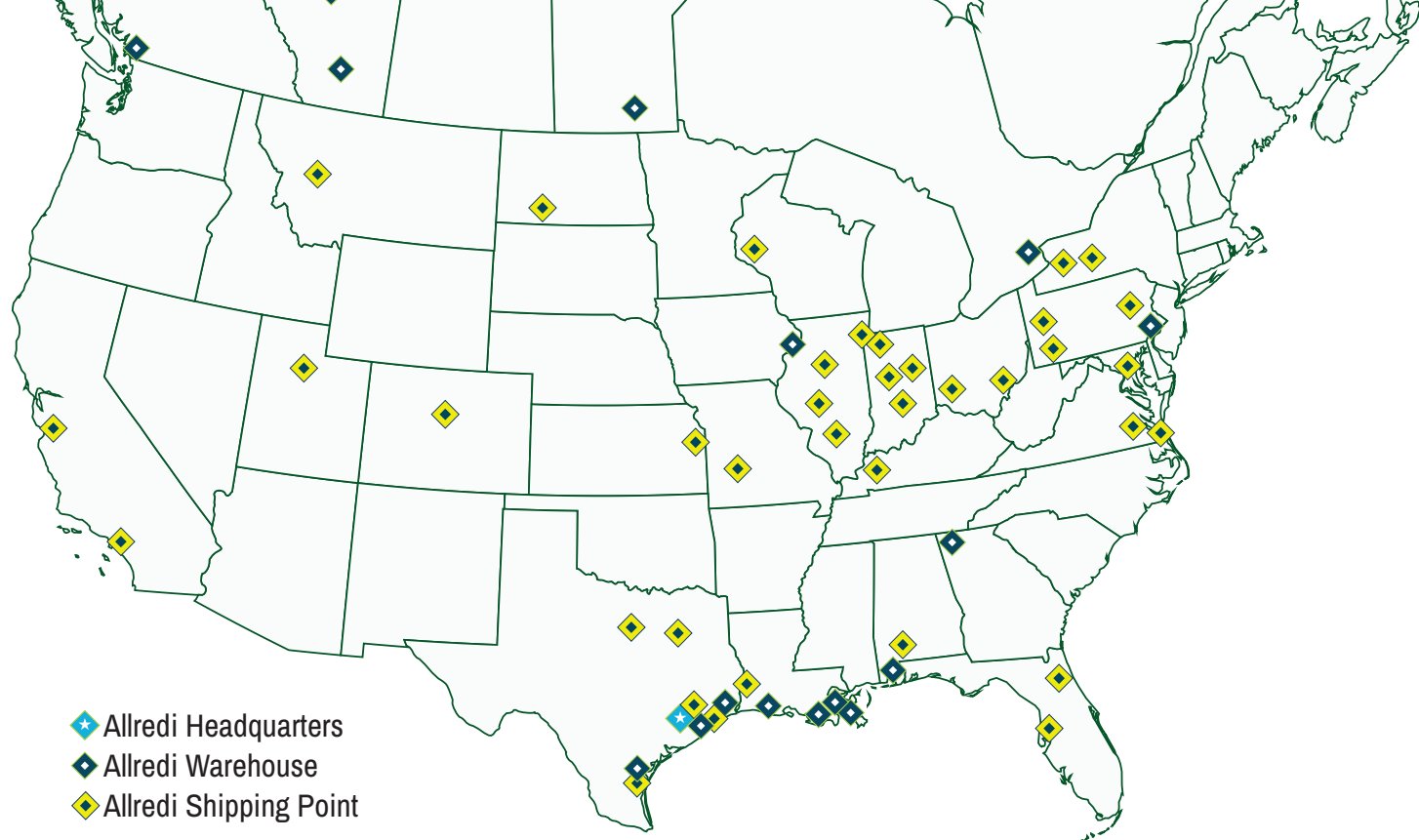
Part Numbers	LUBRICATION
1070517	Pneumatic Air Tool Oil - 32 oz. bottle




MAINTENANCE NOTES

[illegible]

MAINTENANCE NOTES

[illegible]



-  Allredi Headquarters
-  Allredi Warehouse
-  Allredi Shipping Point

ALLREDI THERE

Serving these industries: Bridge, Pipeline, Tank & Tower, Concrete Services, Rail, Shipyard & Marine, Pools & Fountains, and Foundry

UNITED STATES

Pasadena, TX (*Headquarters*)

844.361.7038

Beaumont, TX

409.722.1284

Bristol, PA

215.826.8080

Corpus Christi, TX

361.887.2038

Davenport, IA

563.324.2519

Deer Park, TX

(*Service & Rental Location*)

281.930.0905

Duluth, GA

800.535.4564

Gonzales, LA

225.647.7575

Harvey, LA

504.367.8090

Houma, LA

985.580.4273

Lafayette, LA

337.267.1440

Theodore, AL

251.338.7525

CANADA

Calgary, Alberta

403.279.1924

Coquitlam, BC

604.464.6979

Edmonton, Alberta

780.468.2588 (Manus)

780.425.5510 (Mod-U-Blast)

Hamilton, Ontario

905.527.6000 / 888.794.5665

Mississauga, Ontario

905.890.5837

Winnipeg, Manitoba

204.256.3324

WWW.ALLREDI-US.COM / 800.252.7848

WWW.ALLREDI-CA.COM / 800.661.3842

Allredi™ and Marco® are registered trademarks of Allredi, LLC.
Mod-U-Blast® is a registered trademark of Allredi Blast & Abrasives Canada, Inc.
All other brand names or marks are used for identification purposes and are trademarks of their respective owners.

ALLREDI™

Literature #106M116_3/20/2025