



MARCO® 950 CFM AIR DRYER



Powered by **ALLREDI**.

PART NUMBERS AND SCHEMATICS GUIDE

Company Profile

Allredi was formed in the early 2020, when two of the largest distributors in the blasting, coating, safety, and environmental industry, APE Companies and Marco Group International, joined forces. While the qualities both companies are known for have not changed, a lot about our business is new. New abilities. New agilities. New ways to help you win. This calls for a new name, Allredi.

This name exemplifies what we have become. It is completely oriented to the needs of our customers. To your needs. It says that when you call us for anything – products, service, expert advice, anything – you can consider it done. Or even better, Allredi done.

We are your right-now supplier. From skills to SKUs, we deliver the goods fast. So you can be more agile every minute, every day. This is who we are. This is what our new name means. Go ahead and expect excellence, because we're bringing it.

Our Mission and Vision

To be the industry's preferred partner in surface preparation solutions through unrivaled technical expertise, customer experience, product availability, and tailored service offerings.

The Allredi Difference

- **Industry Experience** – With Allredi on your team, you have access to expertise which can only come from decades of industry leadership. We have organized our engineering department, production specialists, customer operations, and safety support into a “Center of Competence.” As an Allredi customer, you have access to hundreds of years of cumulative experience related to your operations.
- **Manufacturing Excellence** – Allredi is a U.S. based manufacturer of equipment for the Surface Preparation and Protective Coatings industries. Allredi's engineers benchmark the industry to ensure that we design and manufacture superior products that set the “Gold Standard” for performance, safety, and quality.
- **Legendary Customer Service** – Allredi's legendary customer service team is staffed by friendly, highly-trained individuals who are focused on providing the highest level of product support, order accuracy, and customer satisfaction.
- **Product Availability** – We stock over 10,000 SKU's and have over 45 shipping locations to serve North American and International markets for all major brands of blasting, coating, environmental, and safety equipment. Allredi is your right-now supplier, so you can keep your projects moving. From our foundation of strong relationships, we have built a nationwide network that puts vast inventory and ready service close to our customers. We provide advanced expertise, and we deliver the goods fast – so you can easily access the products and services you need to me more agile every minute, every day.
- **Technology Leadership** – Our website provides: Operator's Manuals, Part Numbers and Schematics Guides, SDS information, and key product features and specifications, providing access to information 24/7.

TABLE OF CONTENTS

Company Profile	2
Table of Contents	3
Part Numbers	4
Specifications	5
Part Numbers & Schematics	6-19
Marco® 950 CFM Air Dryer—Pneumatic.....	6-7
Marco® 950 CFM Air Dryer—115-Volt AC.....	8-9
Marco® 950 CFM Air Dryer—230-Volt AC.....	10-11
Aftercooler Assembly—Pneumatic.....	12
Aftercooler Assembly—Electric	13
Transfer Hose Assembly.....	14
Inlet Filter Assembly	15
Air Regulator/Lubricator	16
Inspection Door Assembly	17
Outlet Filter.....	18
Desiccant Tablets and Spherical Tower Packing ...	19
Optional Accessories	19-21
Desiccant Tablets	19
Spherical Tower Packing	19
Airflow Shutoff Kits – Lug Fittings.....	20
Airflow Shutoff Kits – Hammerlock Fittings.....	20
Inlet/Outlet Bushing	21
Pipe Plugs	21
Lubrication	21
Maintenance Notes	22-23

PART NUMBERS

MARCO® 950 CFM AIR DRYER									
Part Numbers	Inlet			Outlet			Power Source	Filter, Regulator, and Lubricator	Electric Starter Box
	Inlet Quantity	Inlet Size	Fittings	Outlet Quantity	Outlet Size	Fittings			
10101672	1	3"	Not Included	5	(2) 3", (1) 1-1/4", (2) 1"	Not Included	Pneumatic	Included	Not Included
10108808	1	3"	Not Included	5	(2) 3", (1) 1-1/4", (2) 1"	Not Included	115-Volt AC	Not Included	Included
10101673	1	3"	Not Included	5	(2) 3", (1) 1-1/4", (2) 1"	Not Included	230-Volt AC	Not Included	Included

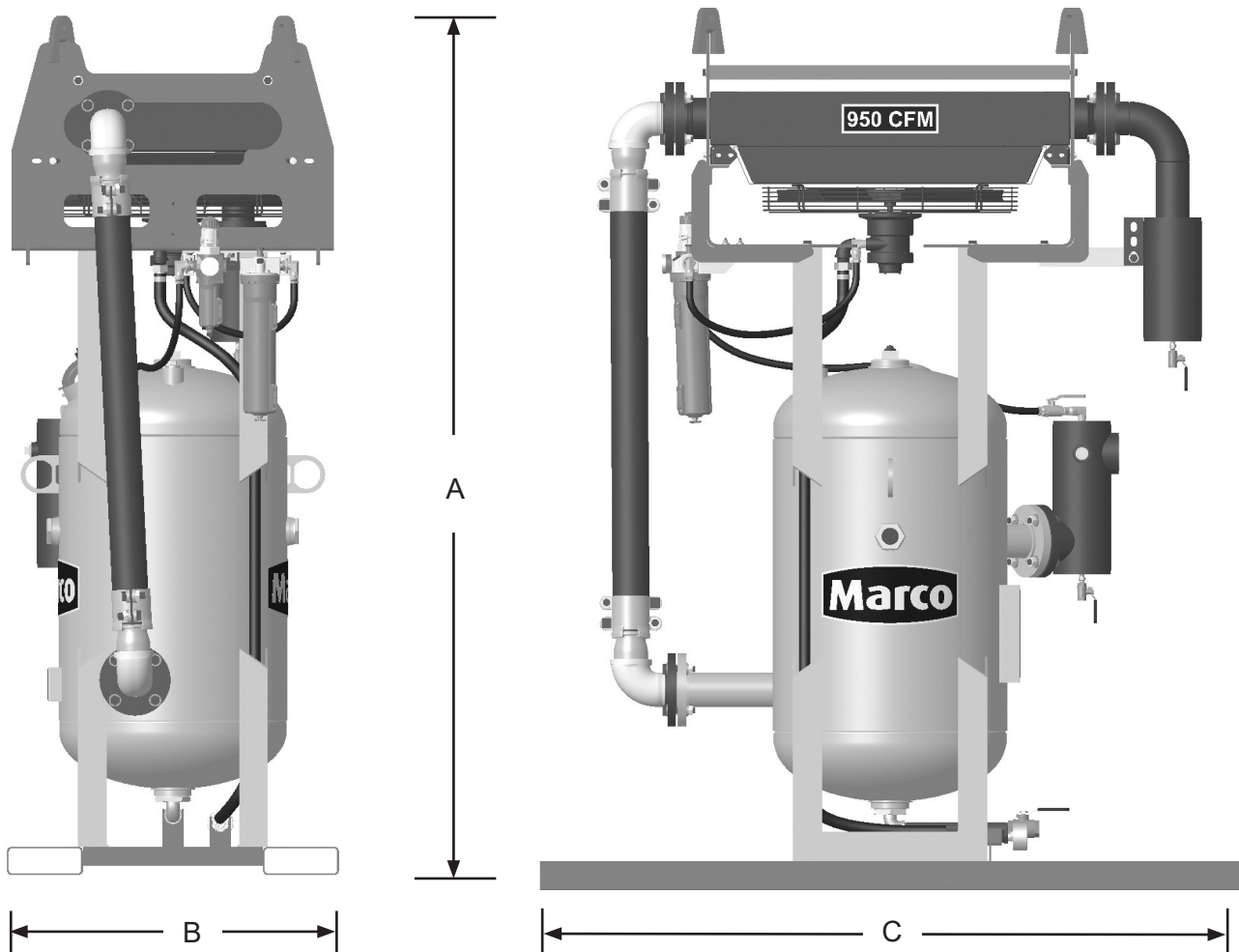
Dessicant tablets not included with Marco® 950 CFM Air Dryers

SPECIFICATIONS

Lubrication: SAE 10 oil or Air Tool Anti-freeze Lubricant

Empty Weight: 1200 Pounds

Overall Dimensions: A: 91"
B: 35"
C: 72"



Pneumatic model shown. Electric model has same dimensions.

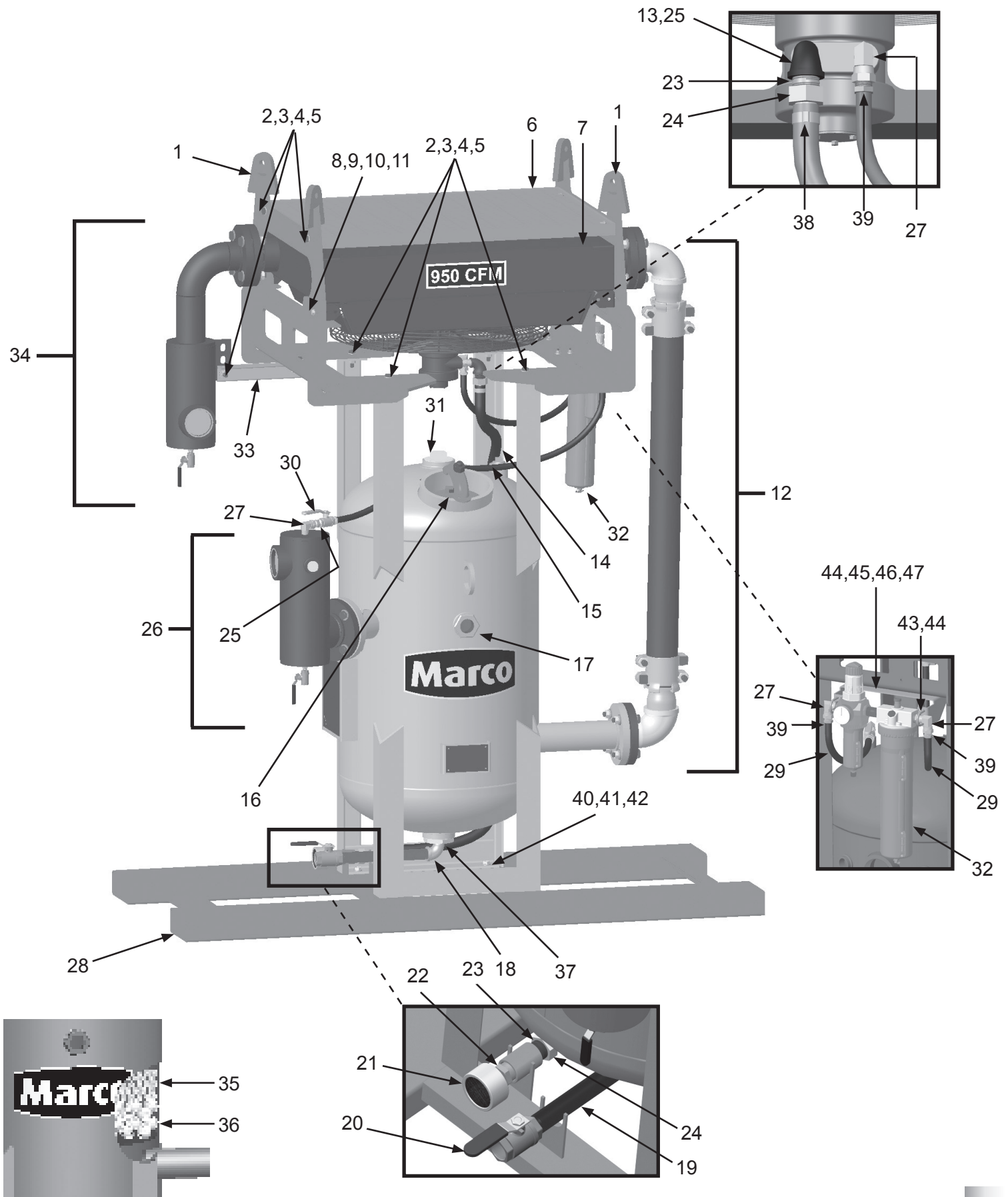
PART NUMBERS & SCHEMATICS

Marco® 950 CFM Air Dryer—Pneumatic

Item #	Part #	Description	Item #	Part #	Description
Fig. 1			25	20100677	1/2" Hex Nipple
—	10101672	Marco® 950 CFM Air Dryer – Pneumatic	26	—	Outlet Filter Assembly (See Fig. 10)
1	10101033	950-1600 CFM Heat Exchanger Mounting Bracket (Two Required)	27	10SAP1290	1/2" 90° Swivel (Four Required)
2	10101943	1/2-13 x 1-1/2" Bolt Galvanized (10 Required)	28	10101024	Skid Weldment
3	10100674	1/2" Flat Washer Galvanized (20 Required)	29	10AH012	1/2" I.D. Air Hose (Per Foot)
4	10100675	1/2" Split Lock Washer Galvanized (10 Required)	30	10L363	1/2" NPT Full Port Ball Valve
5	10101941	1/2-13 Hex Nut Galvanized (10 Required)	31	10101034	3" NPT Galvanized Pipe Plug
6	10101036	Heat Exchanger Protective Grate	32	10105890	Filter/Regulator/Lubricator with Pressure Gauge (See Fig. 8)
7	10TTAHP9505	Aftercooler Assembly - Pneumatic - Complete (See Fig. 4)	33	10101170	Moisture Separator Brace
8	10101059	3/8-16 x 1-1/4" Bolt Galvanized (Four Required)	34	—	Inlet Filter Assembly (See Fig. 7)
9	10101942	3/8" I.D. x 3/4 O.D. Flat Washer Galvanized (Eight Required)	35	—	Desiccant Tablets - Not Included (See Fig. 11)
10	10L805015	3/8" Lock Washer Galvanized (Four Required)	36	10103922	Spherical Tower Packing (See Fig. 11)
11	10101938	3/8-16 Hex Nut Galvanized (Four Required)	37	10101844	3" NPTM x 1" NPTF Bushing
12	—	Transfer Hose Assembly (See Fig. 6)	38	10ACHL1	Band Clamp (Two Required)
13	10101002	1/2" x 1" NPT Reducing Elbow	39	10PAF050	1/2" Push-on Hose Fitting (Four Required)
14	10AH100	1" I.D. Air Hose (Per Foot)	40	10107495	1/2-13 x 1-5/8" Grade 8 Hex Bolt Zinc (Four Required)
15	1011902	1-1/4" NPT Plug	41	10107496	1/2-13 Grade 8 Lock Nut Zinc (Four Required)
16	—	Inspection Door Assembly (See Fig. 9)	42	10104711	1/2" Grade 8 Flat Washer Zinc (Eight Required)
17	10101688	2" NPT Sight Glass	43	10109052	U-Bolt (Two Required)
18	1011801	1" NPT Street Elbow	44	10101940	1/4" Flat Washer (12 Required)
19	10101064	1" x 12" NPT Pipe Nipple	45	10108281	Mounting Bracket
20	1011601	1" NPT Full Port Ball Valve	46	10105903	1/4-20 x 1-1/4" Hex Bolt (Four Required)
21	10101800	Aftercooler Exhaust Muffler 950 CFM–1600 CFM	47	10101939	1/4-20 Stainless Steel Lock Nut with Nylon Insert (Four Required)
22	1011812	1" Male x 1/2" Female Bushing	—	106M115	Part Numbers and Schematics Guide – Marco® 950 CFM Air Dryer
23	1012151	1" Galvanized Close Nipple	—	1090115	Operator's Manual – Marco® 950 CFM Air Dryer
24	10SFE2	1" Female Swivel (Two Required)	—	1091045	Hazard Identification Tag
			—	1070517	Pneumatic Tool Oil — 32 oz.

PART NUMBERS AND SCHEMATICS

Figure 1: Marco® 950 CFM Air Dryer—Pneumatic



PART NUMBERS AND SCHEMATICS

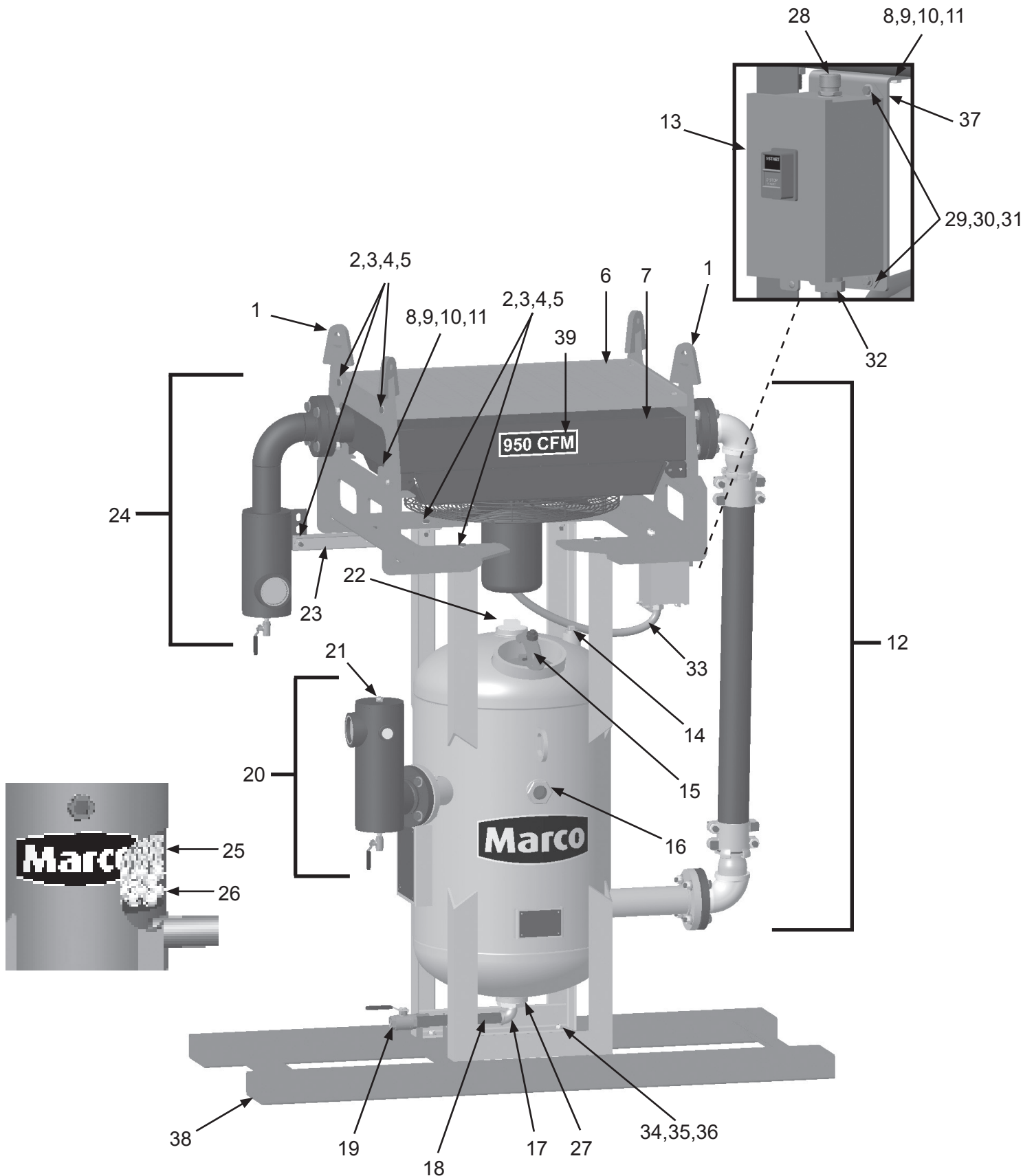
Marco® 950 CFM Air Dryer—115 Volt Electric

Item #	Part #	Description
Fig. 2		
—	10108808	Marco® 950 CFM Air Dryer – 115 Volt Electric
1	10101033	950-1600 CFM Heat Exchanger Mounting Bracket (<i>Two Required</i>)
2	10101943	1/2-13 x 1-1/2" Bolt Galvanized (<i>10 Required</i>)
3	10100674	1/2" Flat Washer Galvanized (<i>20 Required</i>)
4	10100675	1/2" Split Lock Washer Galvanized (<i>10 Required</i>)
5	10101941	1/2-13 Hex Nut Galvanized (<i>10 Required</i>)
6	10101036	Heat Exchanger Protective Grate
7	10TTAHP9502	Aftercooler Assembly - Electric - Complete (See Fig. 5)
8	10101059	3/8-16 x 1-1/4" Bolt Galvanized (<i>Six Required</i>)
9	10101942	3/8" I.D. x 3/4 O.D. Flat Washer Galvanized (<i>12 Required</i>)
10	10L805015	3/8" Lock Washer Galvanized (<i>Six Required</i>)
11	10101938	3/8-16 Hex Nut Galvanized (<i>Six Required</i>)
12	—	Transfer Hose Assembly (See Fig. 6)
13	10108792	1 Phase Electric Motor Starter - 3 HP to 5 HP
14	1011902	1-1/4" NPT Plug
15	—	Inspection Door Assembly (See Fig. 9)
16	10101688	2" NPT Sight Glass
17	1011801	1" NPT Street Elbow
18	10101064	1" x 12" NPT Pipe Nipple
19	1011601	1" NPT Full Port Ball Valve
20	—	Outlet Filter Assembly (See Fig. 10)
21	20PFHA24ST08	1/2" NPT Pipe Plug
22	10101034	3" NPT Galvanized Pipe Plug
23	10101170	Moisture Separator Brace

Item #	Part #	Description
24	—	Inlet Filter Assembly (See Fig. 7)
25	—	Desiccant Tablets - <i>Not Included</i> (See Fig. 11)
26	10103922	Spherical Tower Packing (See Fig. 11)
27	10101844	3" NPTM x 1" NPTF Bushing
28	20101197	3/4" NPT Cord Grip
29	1012154	1/4-20 x 1" Hex Bolt Zinc (<i>Four Required</i>)
30	1014017	1/4" Flat Washer Zinc (<i>Eight Required</i>)
31	1012323	1/4"-20 Lock Nut Zinc (<i>Four Required</i>)
32	10103303	3/4" Conduit Hub (<i>Two Required</i>)
33	10103304	3/4" Flexible Conduit
34	10107495	1/2-13 x 1-5/8" Grade 8 Hex Bolt Zinc (<i>Four Required</i>)
35	10107496	1/2-13 Grade 8 Lock Nut Zinc (<i>Four Required</i>)
36	10104711	1/2" Grade 8 Flat Washer Zinc (<i>Eight Required</i>)
37	10108830	Motor Starter Bracket
38	10101024	Skid Weldment
39	1094537	950 CFM Product Sticker
—	10108798	Thermal Unit - Full Load Current 16.2 - 17.6 Amps
—	106M115	Part Numbers and Schematics Guide – Marco® 950 CFM Air Dryer
—	1090115	Operator's Manual – Marco® 950 CFM Air Dryer
—	1091045	Hazard Identification Tag

PART NUMBERS AND SCHEMATICS

Figure 2: Marco® 950 CFM Air Dryer—115 Volt Electric



PART NUMBERS AND SCHEMATICS

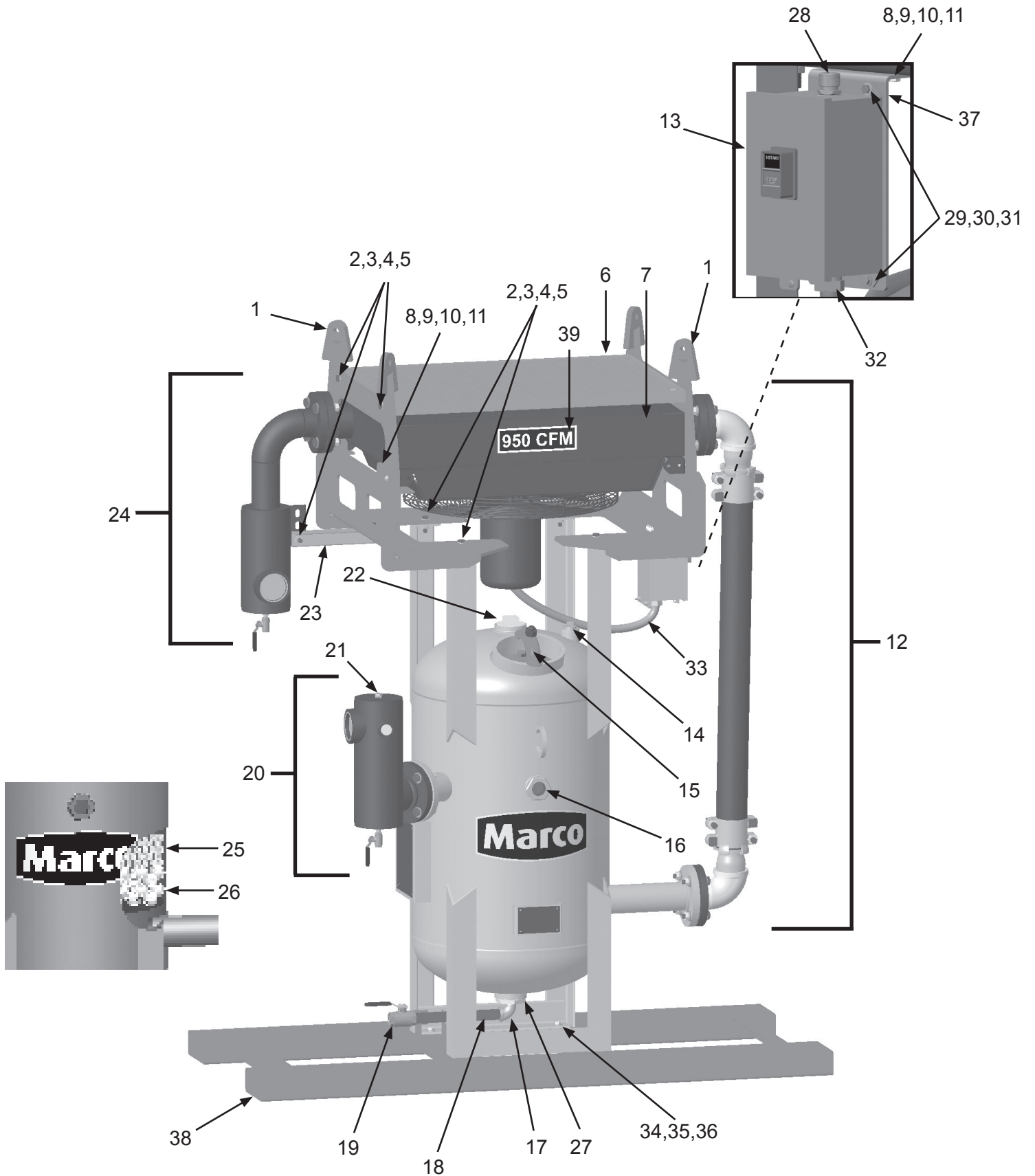
Marco® 950 CFM Air Dryer—230 Volt Electric

Item #	Part #	Description
Fig. 3		
—	10101673	Marco® 950 CFM Air Dryer – 230 Volt Electric
1	10101033	950-1600 CFM Heat Exchanger Mounting Bracket (<i>Two Required</i>)
2	10101943	1/2-13 x 1-1/2" Bolt Galvanized (<i>10 Required</i>)
3	10100674	1/2" Flat Washer Galvanized (<i>20 Required</i>)
4	10100675	1/2" Split Lock Washer Galvanized (<i>10 Required</i>)
5	10101941	1/2-13 Hex Nut Galvanized (<i>10 Required</i>)
6	10101036	Heat Exchanger Protective Grate
7	10TTAHP9502	Aftercooler Assembly - Electric - Complete (See Fig. 5)
8	10101059	3/8-16 x 1-1/4" Bolt Galvanized (<i>Six Required</i>)
9	10101942	3/8" I.D. x 3/4 O.D. Flat Washer Galvanized (<i>12 Required</i>)
10	10L805015	3/8" Lock Washer Galvanized (<i>Six Required</i>)
11	10101938	3/8-16 Hex Nut Galvanized (<i>Six Required</i>)
12	—	Transfer Hose Assembly (See Fig. 6)
13	10101760	Motor Starter- Single Phase
14	1011902	1-1/4" NPT Plug
15	—	Inspection Door Assembly (See Fig. 9)
16	10101688	2" NPT Sight Glass
17	1011801	1" NPT Street Elbow
18	10101064	1" x 12" NPT Pipe Nipple
19	1011601	1" NPT Full Port Ball Valve
20	—	Outlet Filter Assembly (See Fig. 10)
21	20PFHA24ST08	1/2" NPT Pipe Plug
22	10101034	3" NPT Galvanized Pipe Plug
23	10101170	Moisture Separator Brace

Item #	Part #	Description
24	—	Inlet Filter Assembly (See Fig. 7)
25	—	Desiccant Tablets Desiccant Tablets - <i>Not Included</i> (See Fig. 11)
26	10103922	Spherical Tower Packing (See Fig. 11)
27	10101844	3" NPTM x 1" NPTF Bushing
28	20101299	3/4" NPT Cord Grip
29	1012154	1/4-20 x 1" Hex Bolt Zinc (<i>Four Required</i>)
30	1014017	1/4" Flat Washer Zinc (<i>Eight Required</i>)
31	1012323	1/4"-20 Lock Nut Zinc (<i>Four Required</i>)
32	10103303	3/4" Conduit Hub (<i>Two Required</i>)
33	10103304	3/4" Flexible Conduit
34	10107495	1/2-13 x 1-5/8" Grade 8 Hex Bolt Zinc (<i>Four Required</i>)
35	10107496	1/2-13 Grade 8 Lock Nut Zinc (<i>Four Required</i>)
36	10104711	1/2" Grade 8 Flat Washer Zinc (<i>Eight Required</i>)
37	10108830	Motor Starter Bracket
38	10101024	Skid Weldment
39	1094537	950 CFM Product Sticker
—	10108796	Thermal Unit - Full Load Current 8.48 - 9.83 Amps
—	106M115	Part Numbers and Schematics Guide – Marco® 950 CFM Air Dryer
—	1090115	Operator's Manual – Marco® 950 CFM Air Dryer
—	1091045	Hazard Identification Tag

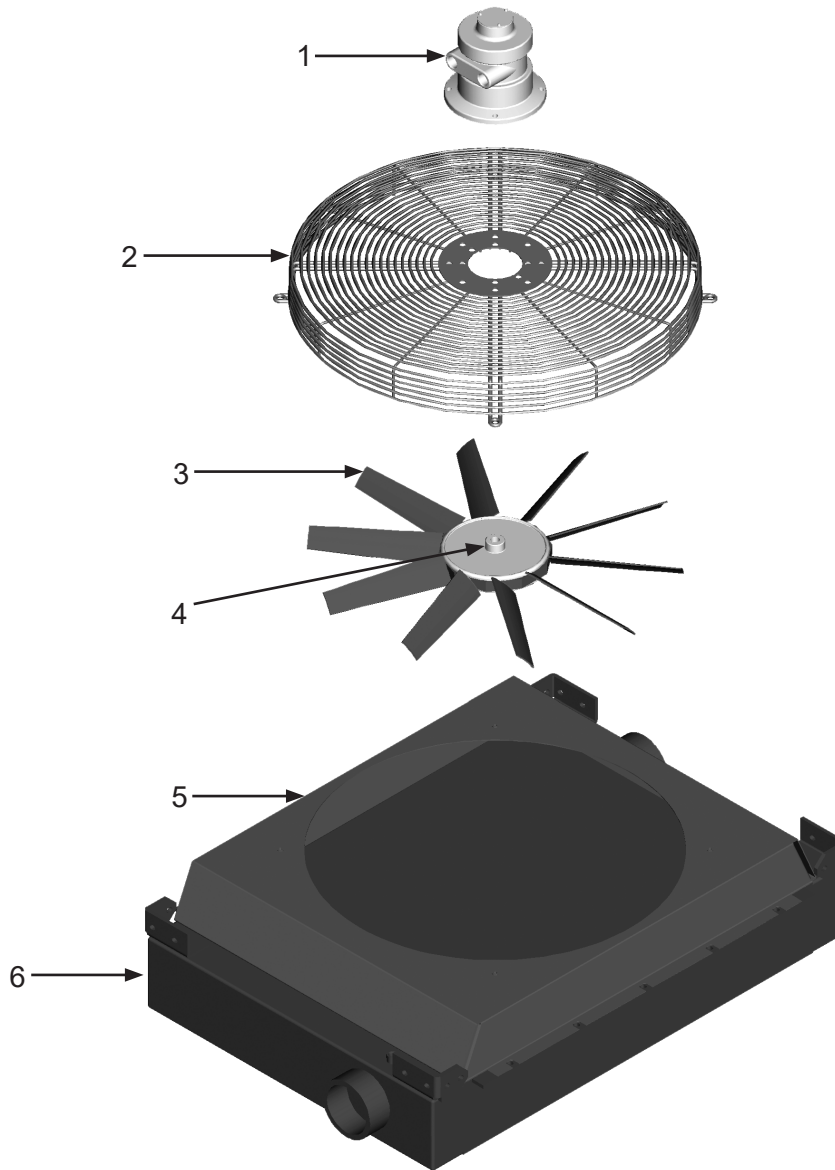
PART NUMBERS AND SCHEMATICS

Figure 3: Marco® 950 CFM Air Dryer—230 Volt Electric



PART NUMBERS AND SCHEMATICS

Figure 4: Aftercooler Assembly—Pneumatic



Item #	Part #	Description
--------	--------	-------------

Fig. 4

—	10TTAHP9505	950 CFM Aftercooler—Pneumatic—Complete
---	--------------------	---

1	10101795	Air Motor
---	----------	-----------

2	10101799	Fan Guard
---	----------	-----------

3	10101797	Fan Blades (Includes Blades and Hub)
---	----------	--------------------------------------

4	10101798	Fan Bushing
---	----------	-------------

5	10102957	Fan Shroud
---	----------	------------

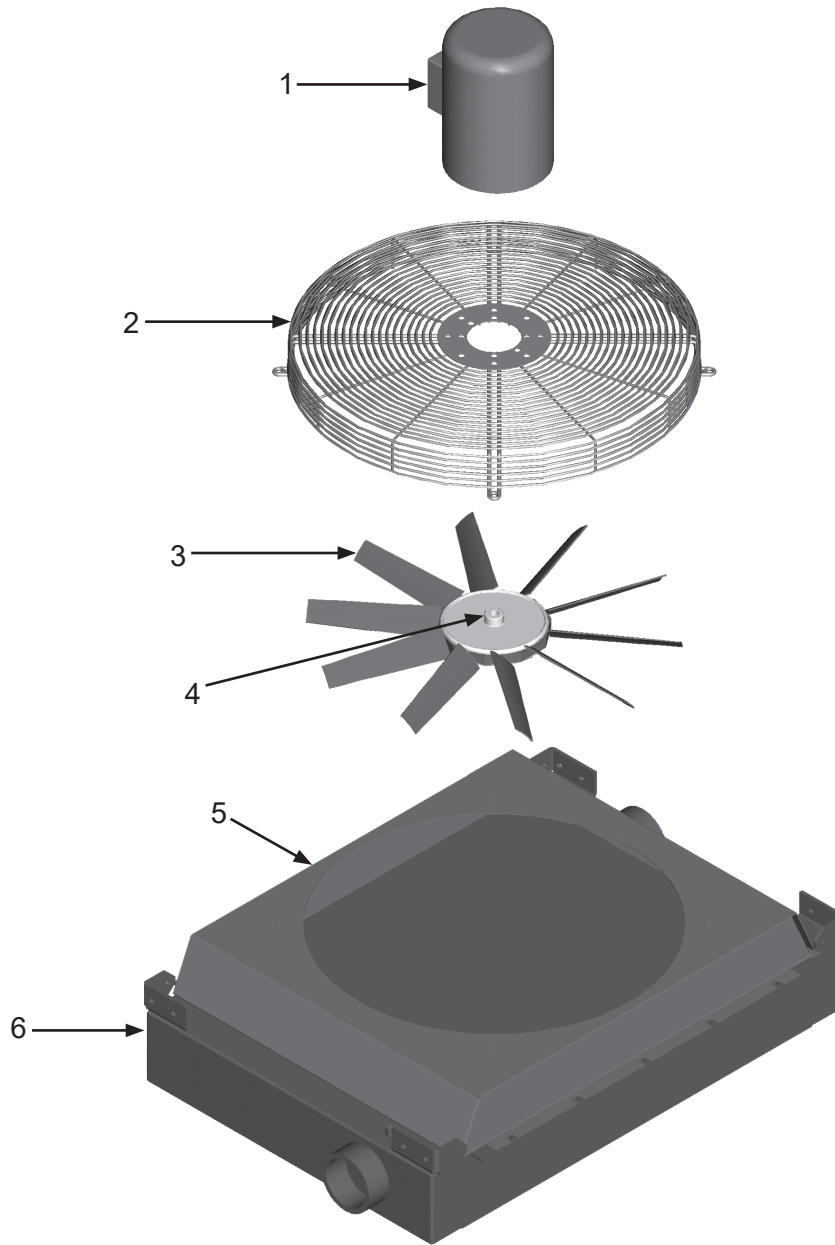
6	10101794	Aftercooler Core
---	----------	------------------

—	1070517	Pneumatic Tool Oil - 32 oz.
---	---------	-----------------------------

—	10101796	Air Motor Service Kit (Includes: shaft seal, drive end bearing, dead end bearing, four vanes, four push pins, four vane springs, shim, end cap gasket, muffler cartridge, and muffler felt)
---	----------	--

PART NUMBERS AND SCHEMATICS

Figure 5: Aftercooler Assembly—Electric



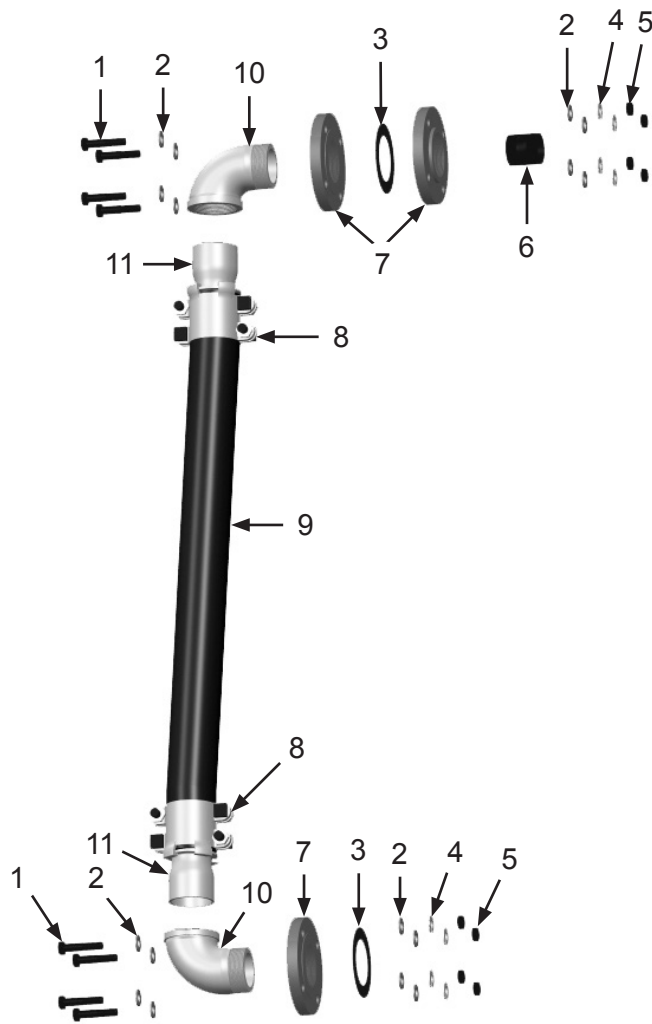
Item #	Part #	Description
--------	--------	-------------

Fig. 5

—	10TTAHP9502	950 CFM Aftercooler—Electric—Complete
1	10101760	Electric Motor – (115V/208-230V) – Single Phase
2	10101799	Fan Guard
3	10101797	Fan Blades (Includes Blades and Hub)
4	10101802	Fan Bushing
5	10102957	Fan Shroud
6	10101794	Aftercooler Core

PART NUMBERS AND SCHEMATICS

Figure 6: Transfer Hose Assembly



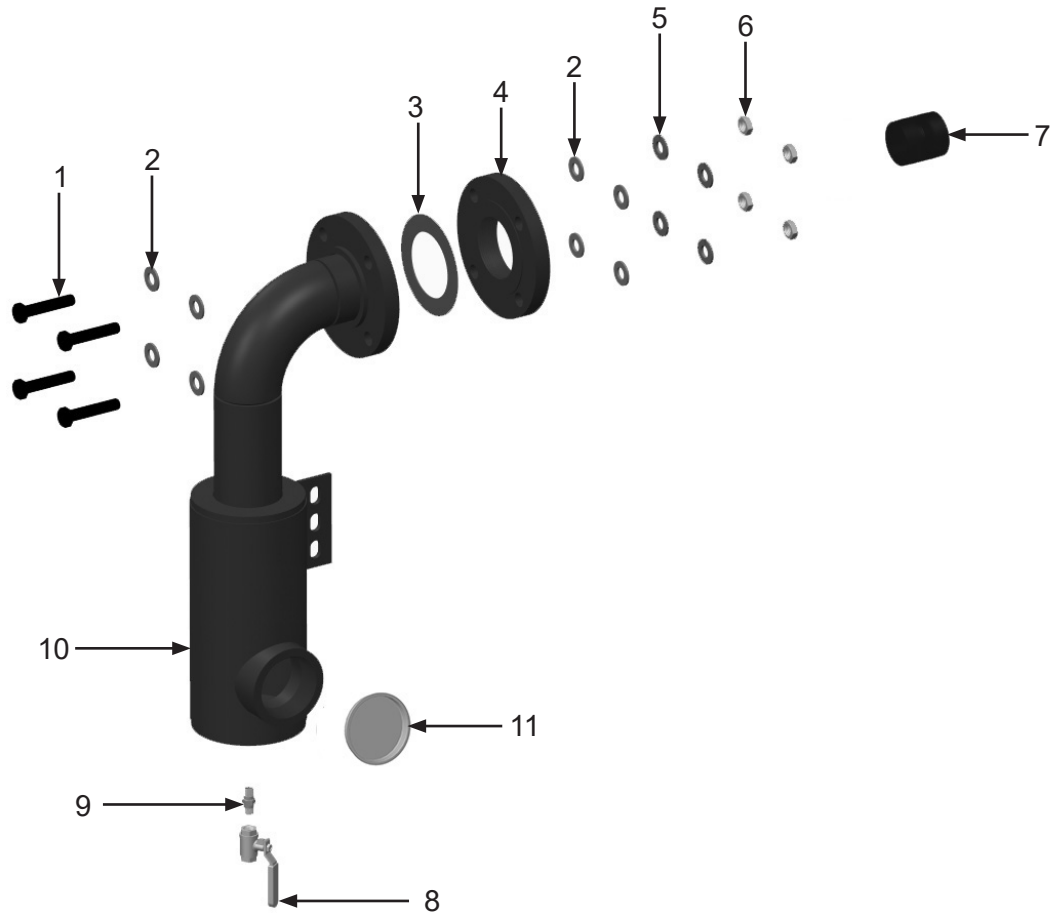
Item #	Part #	Description
--------	--------	-------------

Fig. 6

1	10101058	5/8-11 x 3" Grade 8 Bolt (Eight Required)
2	10101060	5/8" Flat Washer (16 Required)
3	10101047	Flange Gasket (Two Required)
4	10103399	5/8" Grade 8 Split Lock Washer (Eight Required)
5	10103393	5/8-11 Grade 8 Hex Nut (Eight Required)
6	10101040	3" NPT Close Nipple
7	10101041	3" NPT Threaded Flange (Three Required)
8	10BU35	3" Boss Clamp (Two Required)
9	10101045	3" x 2-1/2' Steel Reinforced Air Hose (Per Foot)
10	10101148	3" NPT Street Elbow (Two Required)
11	10101754	3" NPT Hose Stem (Two Required)

PART NUMBERS AND SCHEMATICS

Figure 7: Inlet Filter Assembly



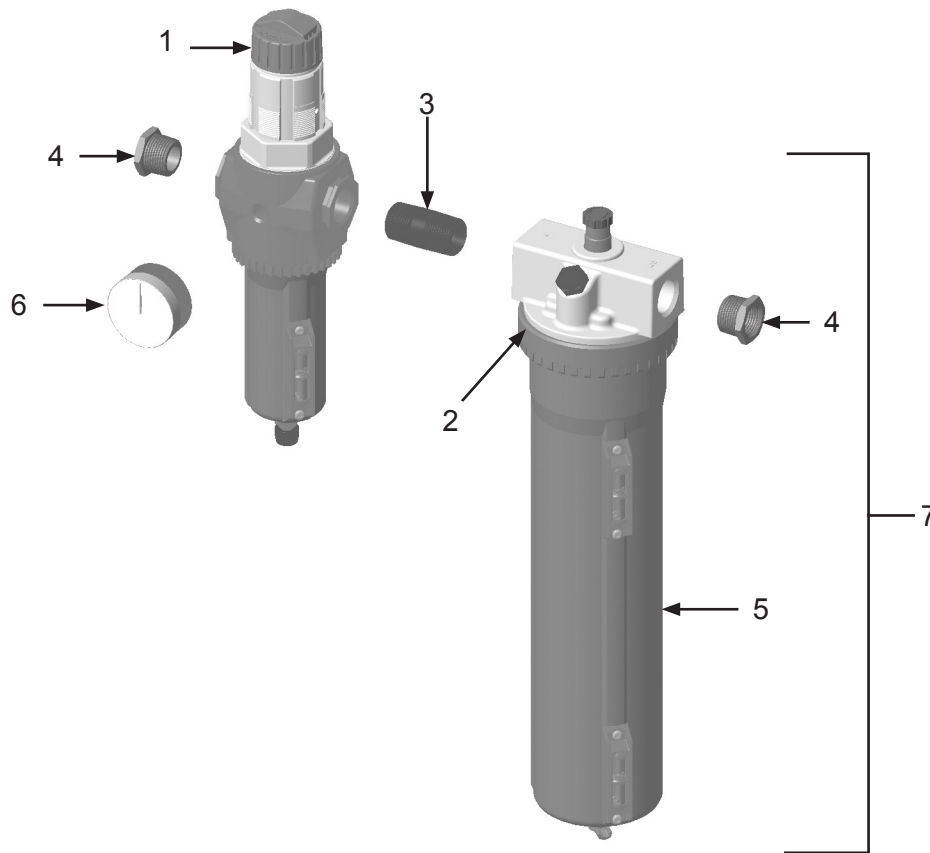
Item #	Part #	Description
--------	--------	-------------

Fig. 7

1	10101058	5/8-11 x 3" Grade 8 Bolt (<i>Four Required</i>)
2	10101060	5/8" Flat Washer (<i>Eight Required</i>)
3	10101047	Flange Gasket
4	10101041	3" NPT Threaded Flange
5	10103399	5/8" Grade 8 Split Lock Washer (<i>Four Required</i>)
6	10103393	5/8-11 Grade 8 Hex Nut (<i>Four Required</i>)
7	10101040	3" NPT Close Nipple
8	1080050	1/4" NPT Full Port Ball Valve
9	1017019	1/4" NPT Hex Nipple
10	10101049	Inlet Moisture Separator
11	10101238	3" NPT Transport Plug

PART NUMBERS AND SCHEMATICS

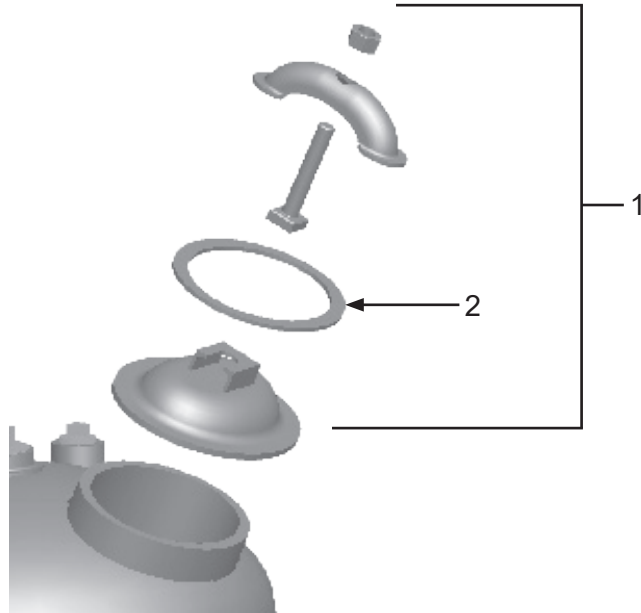
Figure 8: Air Filter/Regulator/Lubricator



Item #	Part #	Description
Fig. 8		
	10105890	Air Filter/Regulator/Lubricator with Pressure Gauge—Pneumatic—Complete
1	10105891	Filter/Regulator
2	10106432	Large O-ring - Lubricator
3	10105894	3/4" x 2" Pipe Nipple
4	10105895	Coupler with 3/4" x 1/2" Reducing Bushing (<i>Two Required</i>)
5	10106507	Lubricator Bowl
6	1028606	Pressure Gauge – 0-160 PSI 1/4" – Back Mount
7	10110133	Lubricator <i>Includes #s: 2 and 5</i>
—	1070517	Pneumatic Tool Oil - 32 oz.
—	10106504	Diaphragm Kit for Filter/Regulator
—	10106505	Bowl, O-Ring and Site Gauge Kit for Filter/Regulator
—	10106506	Cartridge Kit for Lubricator

PART NUMBERS AND SCHEMATICS

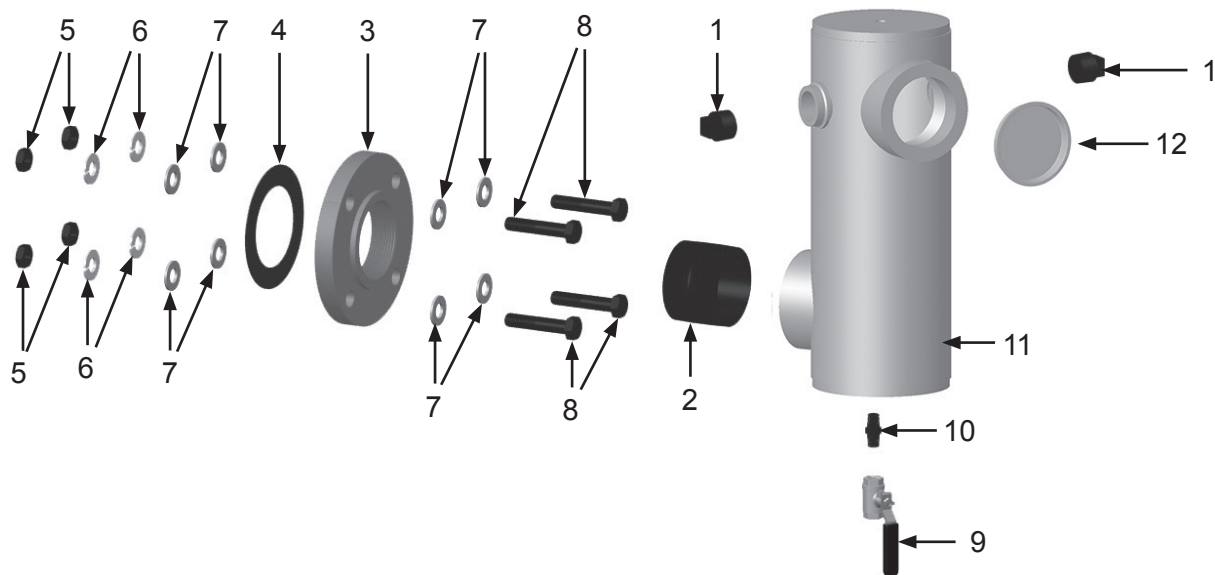
Figure 9: Inspection Door Assembly



Item #	Part #	Description
Fig. 9		
1	10106105	Air Dryer Inspection Door Assembly – Complete <i>Includes Item #2</i>
2	1006201	Inspection Door Gasket

PART NUMBERS AND SCHEMATICS

Figure 10: Outlet Filter



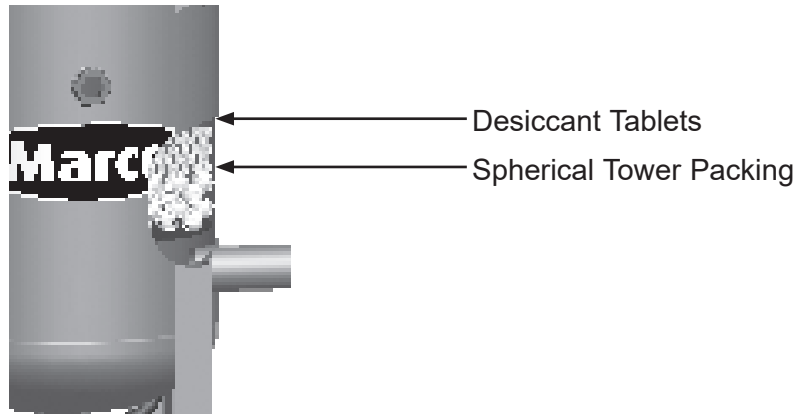
Item #	Part #	Description
--------	--------	-------------

Fig. 9

1	1011901	1" NPT Galvanized Square Head Pipe Plug <i>(Two Required)</i>
2	10101040	3" NPT Galvanized Close Nipple
3	10101041	3" NPT Threaded Flange
4	10101047	Flange Gasket
5	10103393	5/8-11 Grade 8 Hex Nut <i>(Four Required)</i>
6	10103399	5/8" Lock Washer <i>(Four Required)</i>
7	10101060	5/8" Flat Washer <i>(Eight Required)</i>
8	10101058	5/8-11 x 3" Grade 8 Hex Bolt <i>(Four Required)</i>
9	1080050	1/4" Ball Valve
10	1017019	1/4" Hex Nipple
11	10101686	Outlet Filter Body
12	10101238	3" NPT Transport Plug

OPTIONAL ACCESSORIES





Figure 11: Desiccant Tablets and Spherical Tower Packing








DESICCANT TABLETS		
Part Numbers	Package Weight	Packaging
10V330311	50 pounds	Bag
15V330313	50 pounds	Pail
15V330203	506 pounds	Steel Drum
15V330284	2000 pounds	Bulk Bag


SPHERICAL TOWER PACKING	
Part Numbers	Unit of Measure
10103922	1 Cubic Foot






OPTIONAL ACCESSORIES

		AIRFLOW SHUTOFF KITS – LUG FITTINGS			
	Part Numbers	Pipe String I.D.	Close Nipple	Full Port Ball Valve	Coupling
	10103731	1"	1012151	1011601	10ME2
	10103732	1-1/4"	1011201 <i>(Quantity of Two)</i>	1011602	10ME3
	10103733	1-1/2"	1014015 <i>(Quantity of Two)</i>	1011603	10ME4
	10103734	2"	1001806 <i>(Quantity of Two)</i>	1011604	10ME5

		AIRFLOW SHUTOFF KITS – HAMMERLOCK FITTINGS			
	Part Numbers	Pipe String I.D.	Close Nipple	Full Port Ball Valve	Coupling Spud
	10103830	1"	10102151 <i>(Quantity of Two)</i>	1011601	10DXGB13
	10103831	1-1/4"	1011201 <i>(Quantity of Two)</i>	1011602	10DXGB18
	10103832	1-1/2"	1014015 <i>(Quantity of Two)</i>	1011603	10DXGB23
	10103833	2"	1001806 <i>(Quantity of Two)</i>	1011604	10DXGB28
	10103934	3"	10101040 <i>(Quantity of Two)</i>	1011608	10GB38

OPTIONAL ACCESSORIES

	Part Numbers	INLET/OUTLET BUSHING
		Size
	10101183	Galvanized 3" MNPT x 2" FNPT Bushing

	Part Numbers	GALVANIZED SQUARE HEAD PIPE PLUGS
		Size
	1011901	1"
	1011902	1-1/4"
	1011101	1-1/2"
	1011823	2"
	10101034	3"

Part Numbers	LUBRICATION
1070517	Pneumatic Air Tool Oil - 32 oz. bottle

CONTACT CENTER

- 3425 East Locust Street
Davenport, IA 52803

ph: 800.BLAST.IT (800.252.7848)
ph: 563.324.2519
fax: 563.324.6258

REGIONAL BRANCH OFFICES

- **Iowa**
Davenport
- **Louisiana**
Gonzales
Lafayette
- **Ohio**
Youngstown
- **Texas**
Beaumont
Corpus Christi
Deer Park



- ABRASIVES
- BLASTING
- COATING
- DUST COLLECTORS
- ENGINEERED SYSTEMS
- RENTAL
- SAFETY
- SERVICE & REPAIR
- VACUUMS

40+ NATIONWIDE SHIPPING LOCATIONS



★ Marco Regional Branch Offices and Shipping Locations ● Direct Shipping Locations

CONTACT MARCO

800.BLAST.IT
(800.252.7848)
563.324.2519
FAX: 563.324.6258

WWW.MARCO.US
SALES@MARCO.US