



# MARCO® 8,000 CFM TIER 4 DIESEL DUST COLLECTOR



## PART NUMBERS AND SCHEMATICS GUIDE

## Company Profile

Allredi was formed in the early 2020, when two of the largest distributors in the blasting, coating, safety, and environmental industry, APE Companies and Marco Group International, joined forces. While the qualities both companies are known for have not changed, a lot about our business is new. New abilities. New agilities. New ways to help you win. This calls for a new name, Allredi.

This name exemplifies what we have become. It is completely oriented to the needs of our customers. To your needs. It says that when you call us for anything – products, service, expert advice, anything – you can consider it done. Or even better, Allredi done.

We are your right-now supplier. From skills to SKUs, we deliver the goods fast. So you can be more agile every minute, every day. This is who we are. This is what our new name means. Go ahead and expect excellence, because we're bringing it.

## Our Mission and Vision

To be the industry's preferred partner in surface preparation solutions through unrivaled technical expertise, customer experience, product availability, and tailored service offerings.

## The Allredi Difference

- **Industry Experience** – With Allredi on your team, you have access to expertise which can only come from decades of industry leadership. We have organized our engineering department, production specialists, customer operations, and safety support into a "Center of Competence." As an Allredi customer, you have access to hundreds of years of cumulative experience related to your operations.
- **Manufacturing Excellence** – Allredi is a U.S. based manufacturer of equipment for the Surface Preparation and Protective Coatings industries. Allredi's engineers benchmark the industry to ensure that we design and manufacture superior products that set the "Gold Standard" for performance, safety, and quality.
- **Legendary Customer Service** – Allredi's legendary customer service team is staffed by friendly, highly-trained individuals who are focused on providing the highest level of product support, order accuracy, and customer satisfaction.
- **Product Availability** – We stock over 10,000 SKU's and have over 45 shipping locations to serve North American and International markets for all major brands of blasting, coating, environmental, and safety equipment. Allredi is your right-now supplier, so you can keep your projects moving. From our foundation of strong relationships, we have built a nationwide network that puts vast inventory and ready service close to our customers. We provide advanced expertise, and we deliver the goods fast – so you can easily access the products and services you need to me more agile every minute, every day.
- **Technology Leadership** – Our website provides: Operator's Manuals, Part Numbers and Schematics Guides, SDS information, and key product features and specifications, providing access to information 24/7.

# TABLE OF CONTENTS

<b>Company Profile</b> .....	<b>1</b>	Trailer .....	<b>33</b>
<b>Table of Contents</b> .....	<b>2</b>	Diaphragm Valve .....	<b>34</b>
<b>Part numbers</b> .....	<b>3</b>	Hazard Identification Decals .....	<b>35</b>
<b>Specifications</b> .....	<b>4</b>	<b>Literature References</b> .....	<b>39</b>
<b>Part Numbers and Schematics</b> .....	<b>5</b>	<b>Optional Accessories</b> .....	<b>40</b>
Front Assembly .....	<b>5</b>		
Dust Collector Filter Cartridge Hatch Door .....	<b>7</b>		
Fuel Tank .....	<b>8</b>		
Hydraulic Oil Tank With Filter .....	<b>9</b>		
Hydraulic Hoses .....	<b>11</b>		
Hydraulic Pump .....	<b>13</b>		
Hydraulic Control Assembly .....	<b>14</b>		
Fan Belt Assembly .....	<b>15</b>		
Fan Belt Guard Back Assembly .....	<b>17</b>		
Fan Assembly and Battery Box .....	<b>18</b>		
Access Panel Assembly .....	<b>19</b>		
Pneumatic Ball Vibrators .....	<b>20</b>		
Pulser System Assembly .....	<b>21</b>		
Pulser Regulator and Timer Assembly .....	<b>23</b>		
Pulser Solenoid Enclosure Assembly .....	<b>24</b>		
Discharge Auger Assembly .....	<b>25</b>		
Discharge Auger Drive Assembly .....	<b>27</b>		
Discharge Auger Clean-out Assembly .....	<b>29</b>		
Discharge Auger Assembly .....	<b>30</b>		
Inlet Door Assembly .....	<b>31</b>		
Dust Collector Filter Cartridge Pulsers .....	<b>32</b>		

## PART NUMBERS

### DUSTMASTER® 8,000 CFM TIER 4 DIESEL DUST COLLECTOR

Part Number	Trailer	Skid	Filter Cartridge Material						Filter Cartridge Quantity
			None	High Density 85% Cellulose/15% Poly Blend	85% Cellulose/15% Poly Blend	Fire Retardant	HEPA	Spunbond	
10107223	X		X						1
10107225	X			X					9
10107226	X				X				9
10107227	X					X			9
10107228	X						X		9
10107229	X							X	9
10107224		X	X						1
10107230		X		X					9
10107231		X			X				9
10107232		X				X			9
10107233		X					X		9
10107234		X						X	9



## SPECIFICATIONS

<b>Performance:</b>	CFM : 4770 – 8820 W.C. 6 – 12"
<b>Filter Cartridge Style:</b>	Open Top, Closed Bottom 9 Required
<b>Filter Cleaning:</b>	Pulse System, 5–15 second intervals Pulse Duration: 200–350 millisecond
<b>Air to Cloth Ratio:</b>	3.04:1 @ 8,000 CFM
<b>Filter Area:</b>	2,632 square feet
<b>Efficiency:</b>	85/15 High Density Pleat Blend Filters – 99.8% @ 0.5 micron 85/15 Blend Filters – 99.8% @ 0.5 micron HEPA Filters – 99.99% @ 0.3 micron Fire Retardant Filters – 96.8% @ 2.0 micron Spunbond Filters – 97% @ 3.0 micron
<b>Ducting Connections:</b>	16" I.D., Quantity of Two
<b>Clean-out Ports:</b>	One
<b>Dust Removal Conveyor:</b>	Single 6" Discharge Auger, Hydraulic Motor Drive
<b>Fan:</b>	Backward Inclined, non-overloading, spark resisting
<b>Engine:</b>	Diesel, 49 Horsepower Tier 4F
<b>Fuel Capacity:</b>	Type: Diesel Capacity: 32 Gallons
<b>Air Requirements:</b>	Clean, Dry, Compressed Air 24 CFM @ 80 PSI
<b>Electrical System:</b>	12-Volt DC
<b>Engine Protection:</b>	Engine Monitoring System with automatic shutdown measures: coolant temperature, intake air temperature, engine intake manifold pressure, engine oil pressure, pressure in fuel rail, engine speed and timing.
<b>Fluid Specifications:</b>	Hydraulic Oil: H46 or equivalent, 20 Gallons Diesel Fuel: See Engine Operator's Manual for type Grease/Lubricator: Shell Alvania Grease EP or equivalent
<b>Unit Dimensions Trailer:</b>	Weight: 6060 pounds (empty) Length: 19' 8" Width: 8' Height: 10'
<b>Unit Dimensions Skid:</b>	Weight: 5000 pounds (empty) Length: 13' Width: 6' 8" Height: 10' 1"

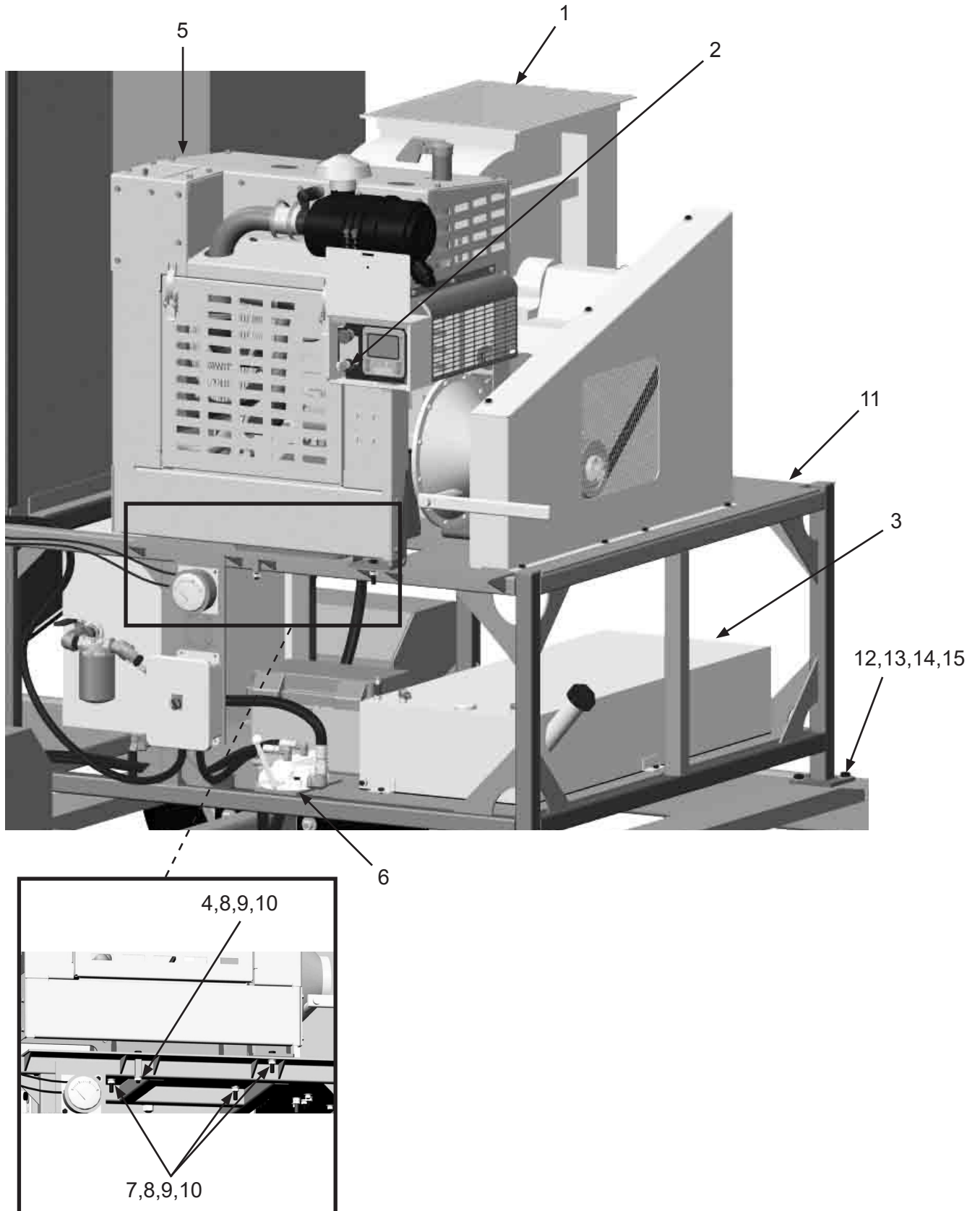
# PART NUMBERS AND SCHEMATICS

## Front Assembly

Item #	Part #	Description
<b>Fig. 1</b>		
1	10104331	BI-200 Fan (See Figure 10)
2	10105323	49 HP Replacement Key
3	10104924	32 Gallon Fuel Tank With Sight Glass (See Figure 3)
4	10102652	1/2-13 x 2-1/4" Grade 5 Bolt (Four Required)
5	10104917	Perkins Engine 49 HP Tier 4F
6	10103267	Cross Hydraulic Control Valve (See Figure 7)
7	10102703	1/2-13 x 3-1/2" Grade 5 Bolt (Four Required)
8	10100674	1/2" Flat Washer (Eight Required)
9	10100675	1/2" Lock Washer (Four Required)
10	1014022	1/2-13 Hex Nut (Four Required)
11	10104858	Hopper Weldment
12	10103397	5/8-11 x 2" Grade 8 Bolt- Zinc (12 Required)
13	10103398	Washer - 5/8" Grade 8 (24 Required)
14	10103399	Lock Washer - 5/8" (12 Required)
15	10103393	Nut - 5/8-11 Grade 8 Zinc (12 Required)
—	10107403	Oil Filter
—	10107404	Cannister Fuel Filter
—	10107405	Fuel Filter
—	10107406	Outer Air Filter
—	10107407	Inner Air Filter
—	10106772	Clutch Arm Extension
—	109V569	Operator's Manual - Perkins® Engine
—	109V037	Operator's Manual – Dynamic Fan Corporation
—	106M151	Part Numbers & Schematics Guide – Dustmaster® 8,000 CFM Tier 4F Diesel Dust Collectors
—	1090151	Operator's Manual – Dustmaster® 8,000 CFM Tier 4F Diesel Dust Collectors

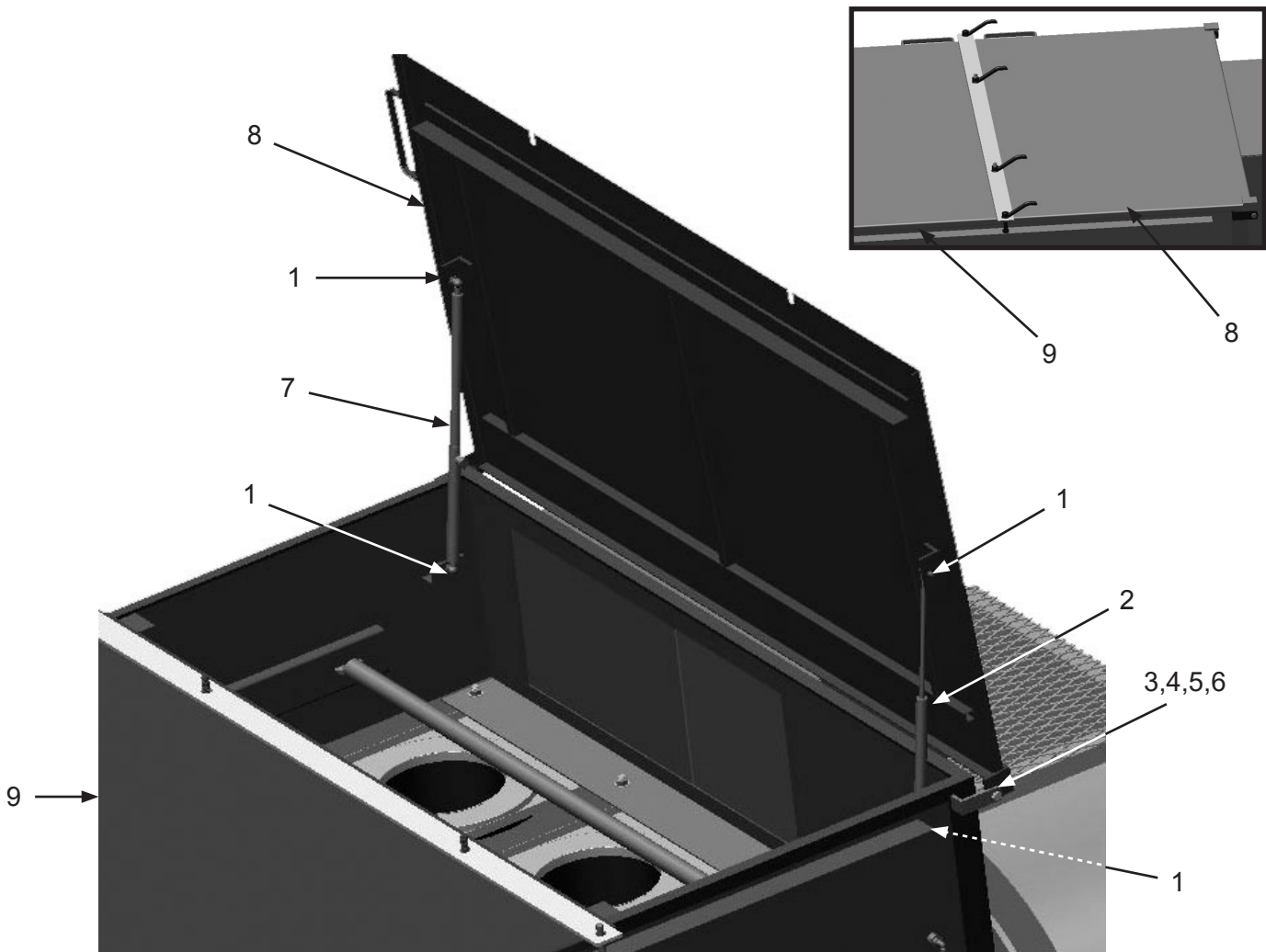
## PART NUMBERS AND SCHEMATICS

Figure 1: Front Assembly



## PART NUMBERS AND SCHEMATICS

**Figure 2: Dust Collector Filter Cartridge Hatch Door**



Item #	Part #	Description
--------	--------	-------------

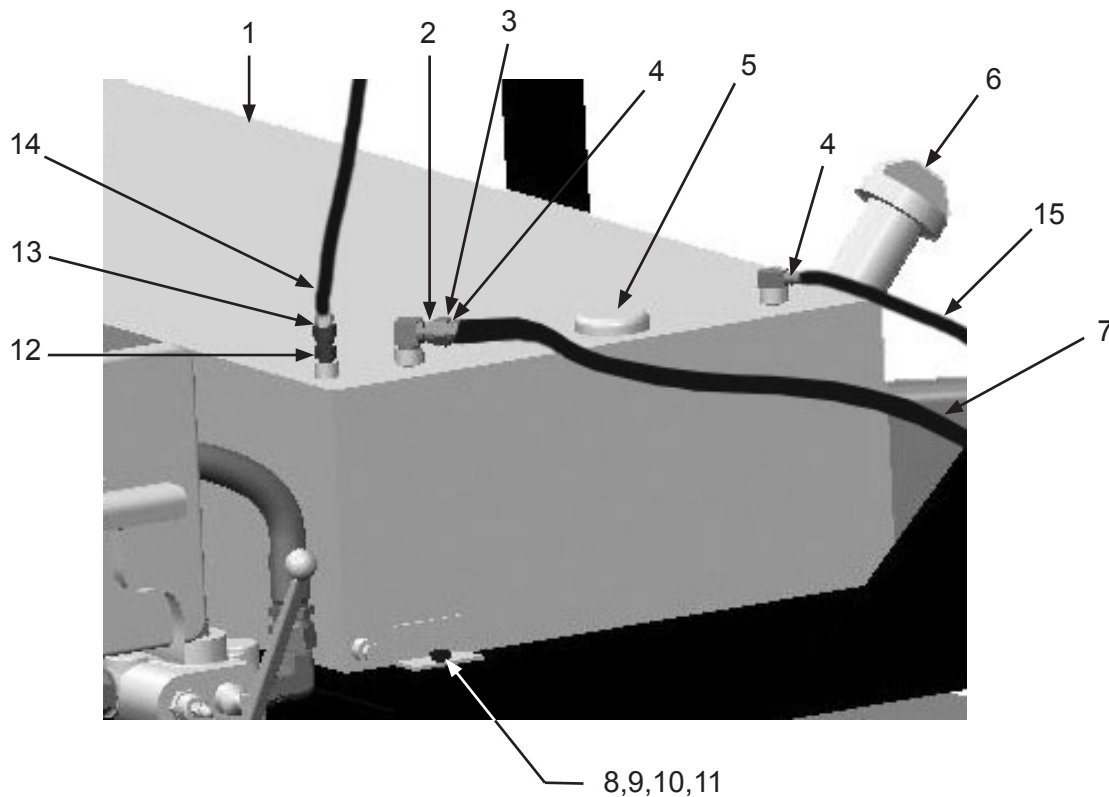
**Fig. 2**

1	1035046	5/16-18 Hex Nut ( <i>Four Required</i> )
2	10103844	Non-Locking Gas Spring
3	10101059	3/8-16 x 1-1/4" A307 Bolt Galvanized
4	10101942	3/8" Flat Washer ( <i>Four Required</i> )
5	10101936	3/8" Lock Washer- Zinc
6	1012318	3/8-16 Hex Nut ( <i>Two Required</i> )
7	10103845	Locking Gas Spring
8	10103802	Front Hatch Door
9	10103798	Rear Hatch Door

*Quantities specified are per hatch opening*

## PART NUMBERS AND SCHEMATICS

**Figure 3: Fuel Tank**



Item #	Part #	Description
<b>Fig. 3</b>		
1	10104924	32 Gal Fuel Tank W/ Sight Glass
2	20PFHA60SA0602	3/8" (M) x 1/4" (F) Swivel Union
3	10103631	5/16" Barb x 1/4" NPT Straight
4	10104101	Oetiker Clamp - 5/16" I.D. Hose
5	10105337	Sight Gauge
6	10103968	Locking Fuel Cap with Keys
7	10104099	5/16" I.D. Fuel Hose <i>(Per Foot)</i>
8	10104234	3/8-16 x 1-1/4" Bolt <i>(Three Required)</i>
9	10101942	3/8" Galvanized Flat Washer <i>(Three Required)</i>
10	1012318	3/8-16 Hex Nut <i>(Three Required)</i>
11	10101936	3/8" Zinc Lock Washer <i>(Three Required)</i>
12	10SME025	1/4" NPT (M) x 1/4" NPS (F) Straight Swivel
13	1017015	1/4" Threaded Barb
14	10105199	3/16" Fuel Hose <i>(Per Foot)</i>
15	10103423	3/8" I.D. Fuel Hose <i>(Per Foot)</i>
—	10105338	Withdraw Tube - 16"
—	10103620	3/8" Inline Filter <i>(Not Shown)</i>
—	10103961	Fuel Tank Rubber Cushioning Pad <i>(Not Shown)</i>

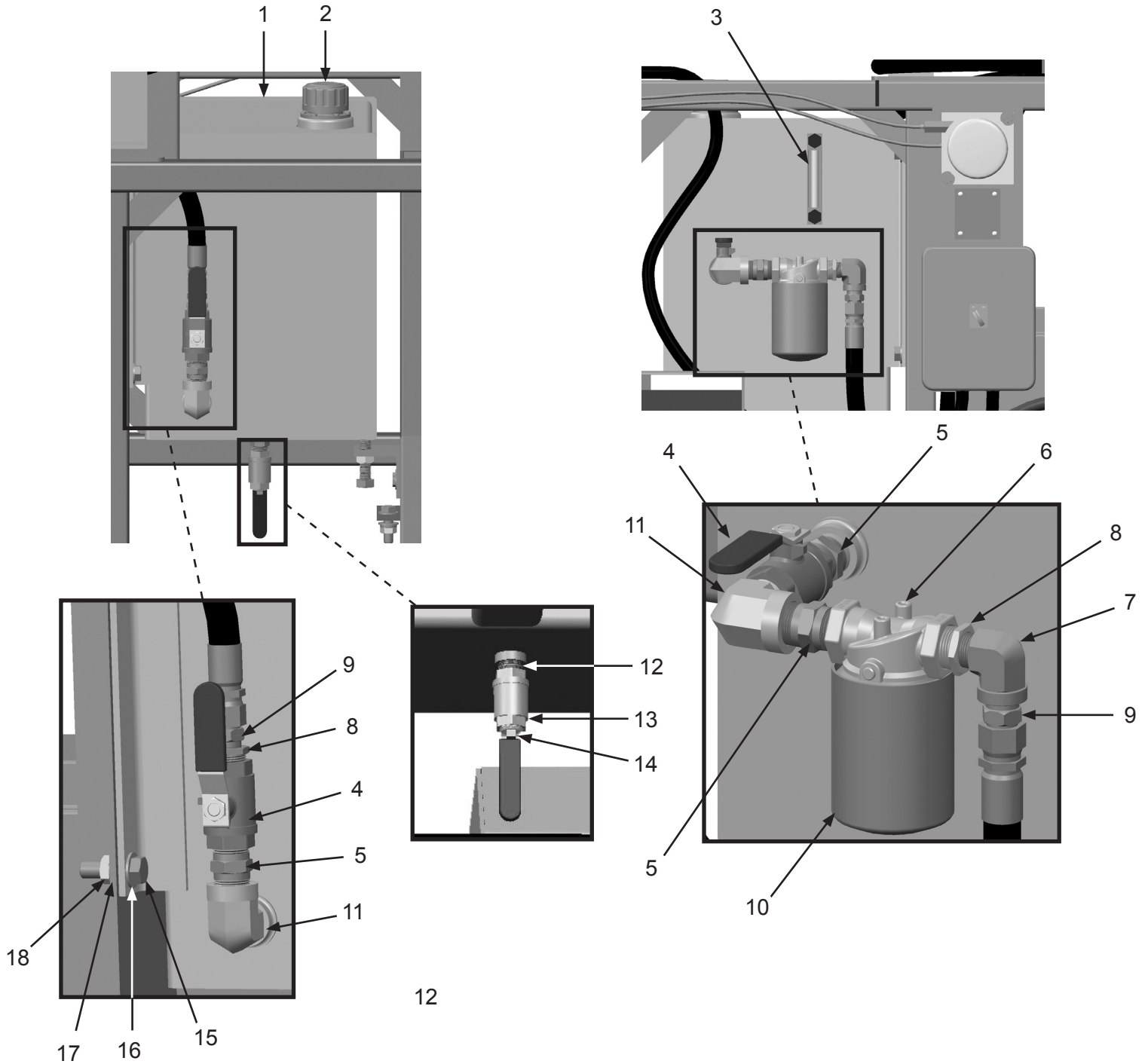
## PART NUMBERS AND SCHEMATICS

### Hydraulic Oil Tank With Filter

Item #	Part #	Description
<b>Fig. 4</b>		
1	10108821	25 Gallon Hydraulic Tank
2	10103971	Filler/Breather Cap
3	10103942	Sight Level Gauge
4	1011601	Full Port Ball Valve - 1" NPT <i>(Two Required)</i>
5	20PFHA24SA1616	1" Hex Nipple <i>(Three Required)</i>
6	10104057	Hydraulic Spin-On Filter Head
7	20PFHA25UG1212	3/4" Street Elbow
8	20PFHA24SB1612	Reducing Bushing - 1" x 3/4" <i>(Two Required)</i>
9	10103314	Straight Adapter - 3/4" NPT x 12 JIC <i>(Two Required)</i>
10	10104058	Hydraulic Spin-On Filter
11	20PFHA25UG1616	1" Street Elbow <i>(Two Required)</i>
12	20PFHA24SA1212	3/4" Hex Nipple
13	10L8074C	Full Port Ball Valve - 3/4" NPT
14	10DSHP75	Pipe Plug - Square Head - 3/4" NPT
15	10103397	5/8-11 x 2" GR8 Bolt Zinc <i>(Four Required)</i>
16	10103398	Washer - 5/8" GR8 <i>(Four Required)</i>
17	10103399	Lock Washer - 5/8" HD <i>(Four Required)</i>
18	10103393	Hex Nut - 5/8-11 GR8 Zinc <i>(Four Required)</i>

## PART NUMBERS AND SCHEMATICS

Figure 4: Hydraulic Oil Tank With Filter



## PART NUMBERS AND SCHEMATICS

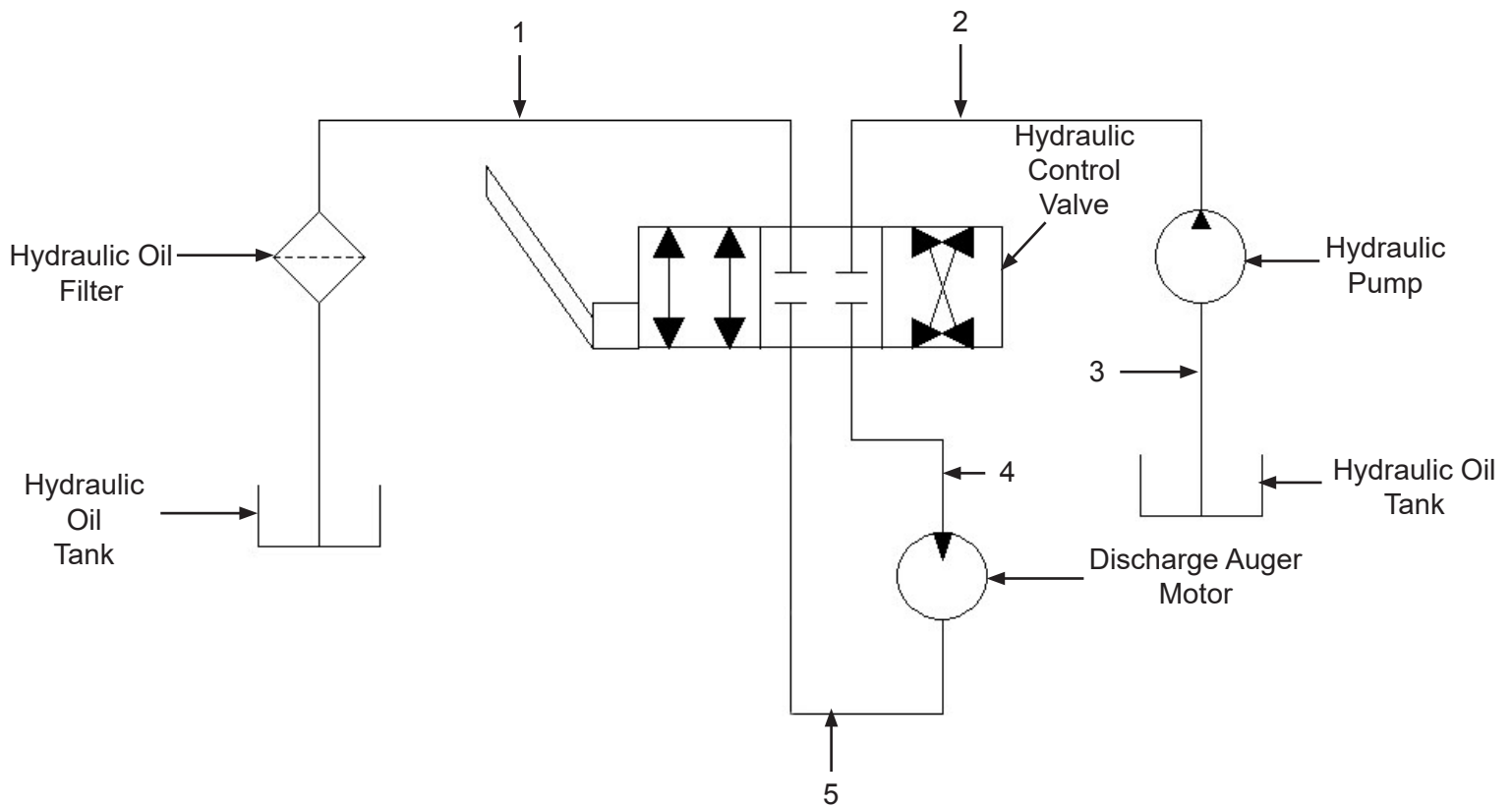
### Hydraulic Hoses

Item #	Part #	Description
<b>Fig. 5</b>		
1	10104927	Hydraulic Hose - 3/4" x 3' 3045 Psi
2	10104055	Hydraulic Hose - 3/4" x 7'8" 3045 Psi
3	10104926	Hydraulic Hose - 3/4" x 5' 3045 Psi
4	10103408	Hydraulic Hose - 1/2" x 12'6" 2000 Psi
5	10103408	Hydraulic Hose - 1/2" x 12'6" 2000 Psi



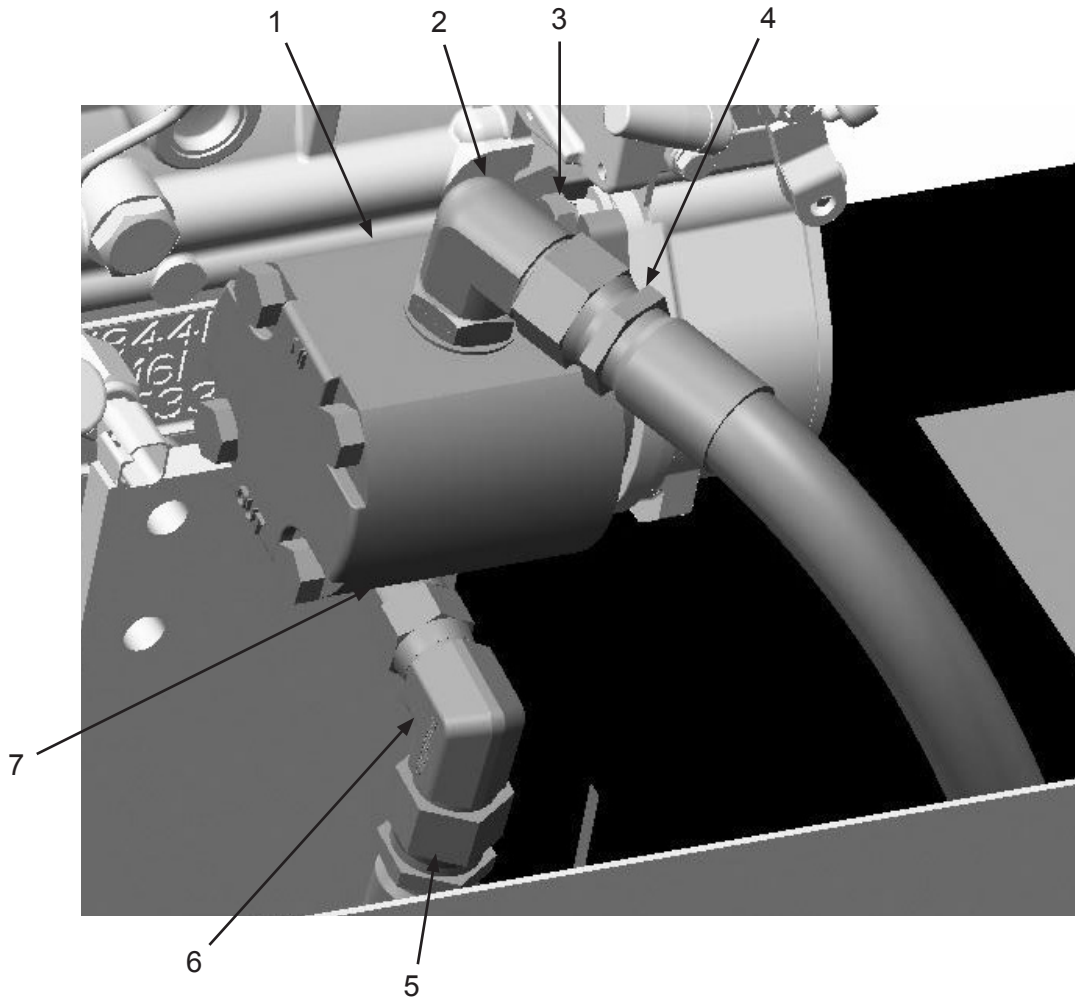
## PART NUMBERS AND SCHEMATICS

Figure 5: Hydraulic Hoses



## PART NUMBERS AND SCHEMATICS

**Figure 6: Hydraulic Pump**



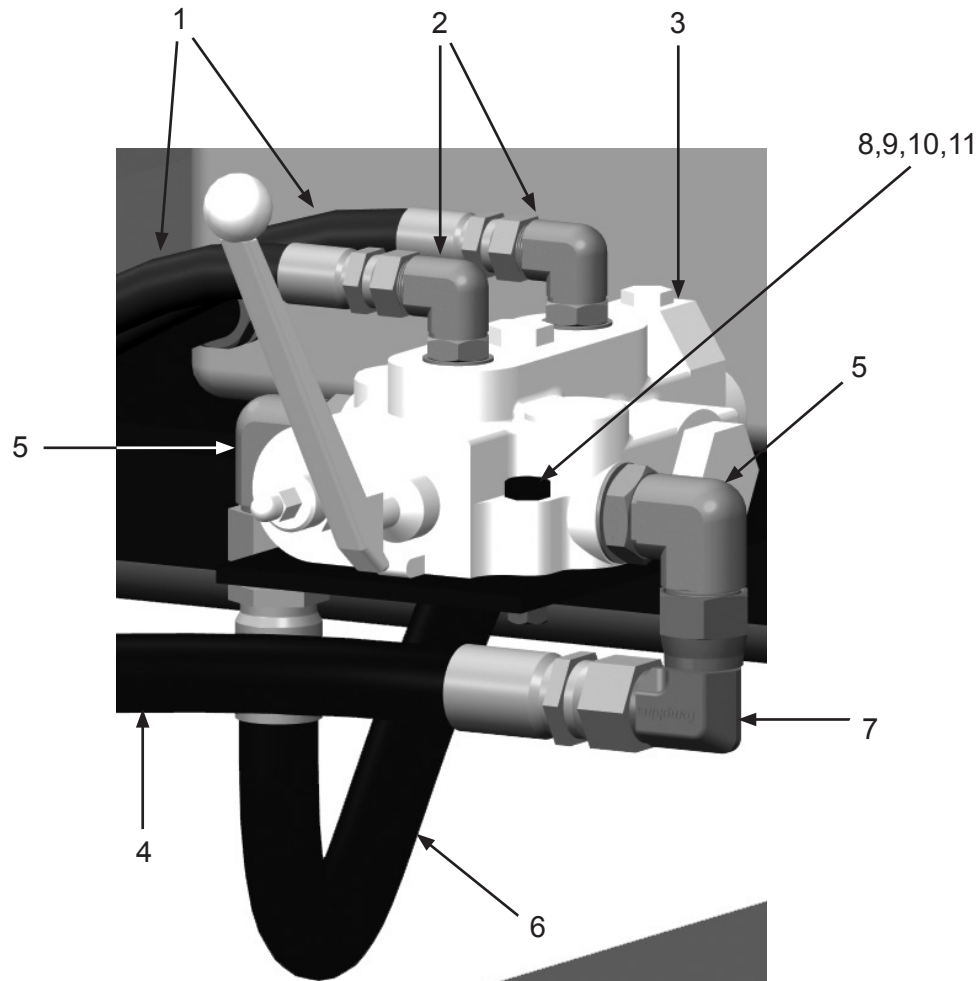
Item #	Part #	Description
--------	--------	-------------

**Fig. 6**

1	10104921	.87 Cubic IN/REV - RH Pump - 11T
2	10103310	Elbow - 90° - JIC 12 x SAE 12
3	10105206	3/8-16 x 4-1/2 GR 5 Zinc Bolt ( <i>Two Required</i> )
4	10104926	Hydraulic Hose - 3/4" x 5' 3045 Psi
5	10104055	Hydraulic Hose - 3/4" x 7'8" 3045 Psi
6	10104923	Elbow 90° JIC 10 F x JIC 12 M
7	10104653	Elbow - 90° - SAE 10 x JIC 10

## PART NUMBERS AND SCHEMATICS

Figure 7: Hydraulic Control Assembly



Item #	Part #	Description
--------	--------	-------------

Fig. 7

1	10103408	Hydraulic Hose - 1/2" x 12'6" 2000 Psi
2	10103309	JIC 8 x SAE 8 90° Elbow ( <i>Two Required</i> )
3	10103267	Cross Hydraulic Control Valve with Handle
4	10104927	Hydraulic Hose - 3/4" x 3' 3045 Psi
5	10103310	JIC 12 x SAE 12 90° Elbow ( <i>Two Required</i> )
6	10104055	Hydraulic Hose - 3/4" x 7'8" 3045 Psi
7	10103610	90° Elbow
8	1028617	3/8-16 x 1-3/4" Shoulder Bolt ( <i>Three Required</i> )
9	10100674	1/2" Flat Washer ( <i>Three Required</i> )
10	10101936	3/8" Lock Washer - Zinc ( <i>Three Required</i> )
11	10101938	3/8-16 Hex Nut - Galvanized ( <i>Three Required</i> )
—	10108331	Cross Hydraulic Control Valve Seal Kit
—	10108332	Cross Hydraulic Control Valve Handle Kit
—	10108333	Cross Hydraulic Control Valve Relief Assembly

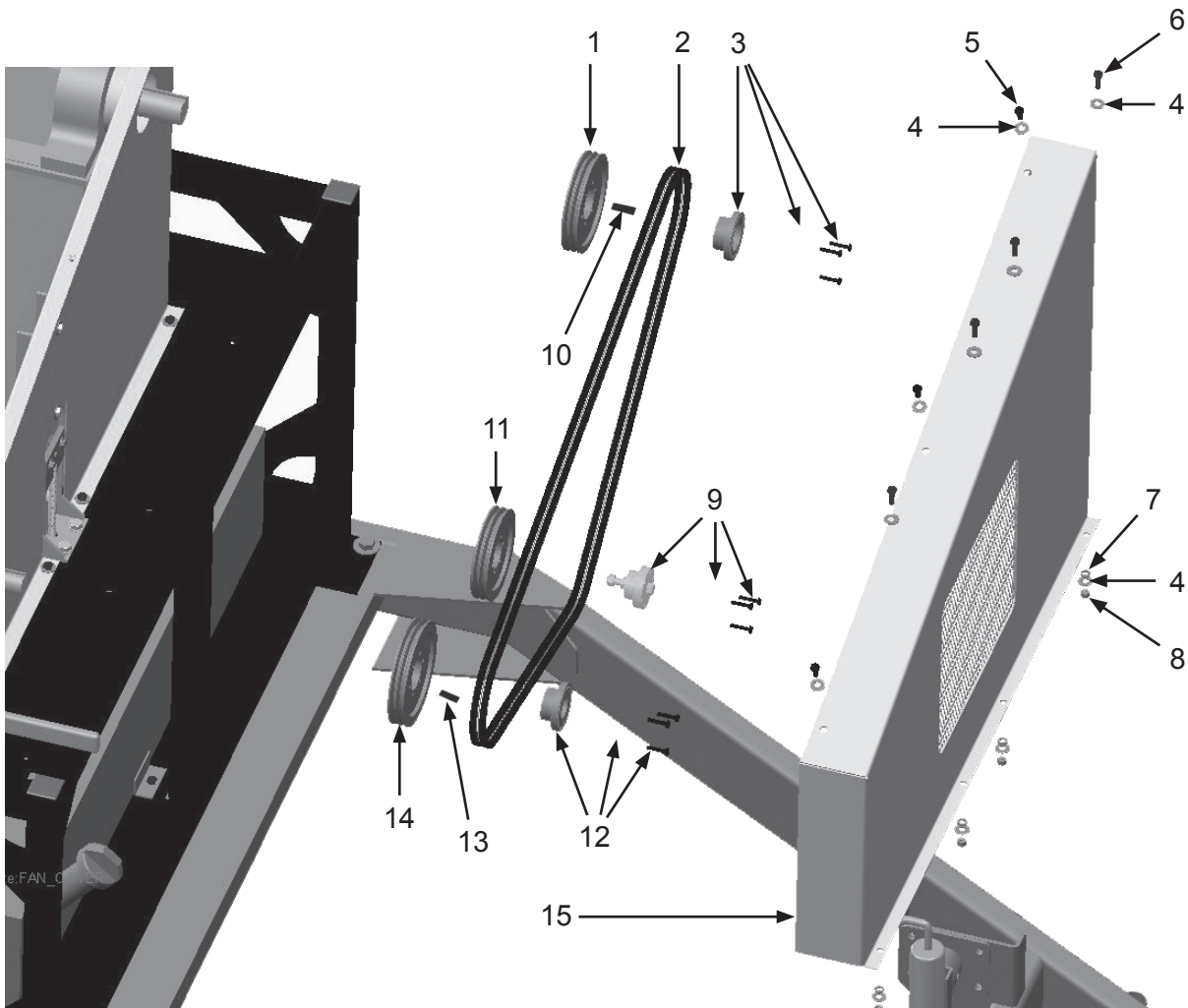
## PART NUMBERS AND SCHEMATICS

### Fan Belt Assembly

Item #	Part #	Description
<b>Fig. 8</b>		
1	10104913	2/3V Sheave 6.50"
2	10104912	3VX 974 Belt ( <i>Two Required</i> )
3	10104330	Bushing 1-15/16" Bore With Hardware
4	10101942	3/8" Galvanized Flat Washer ( <i>11 Required</i> )
5	10103400	3/8-16 x 3/4" Bolt ( <i>Three Required</i> )
6	1011747	3/8-16 x 1" Bolt ( <i>Four Required</i> )
7	10101936	3/8" Zinc Lock Washer ( <i>Four Required</i> )
8	1012318	3/8" Hex Nut ( <i>Four Required</i> )
9	10104915	Idler Bushing With Hardware
10	10104106	1/2" Square Key Cut
11	10104327	2/3V Sheave 6.00"
12	10104914	Bushing - 1-7/16" Bore With Hardware
13	10103641	3/8" Square Key Cut
14	10104329	2/3V Sheave 6.9"
15	10104902	Belt Guard Cover

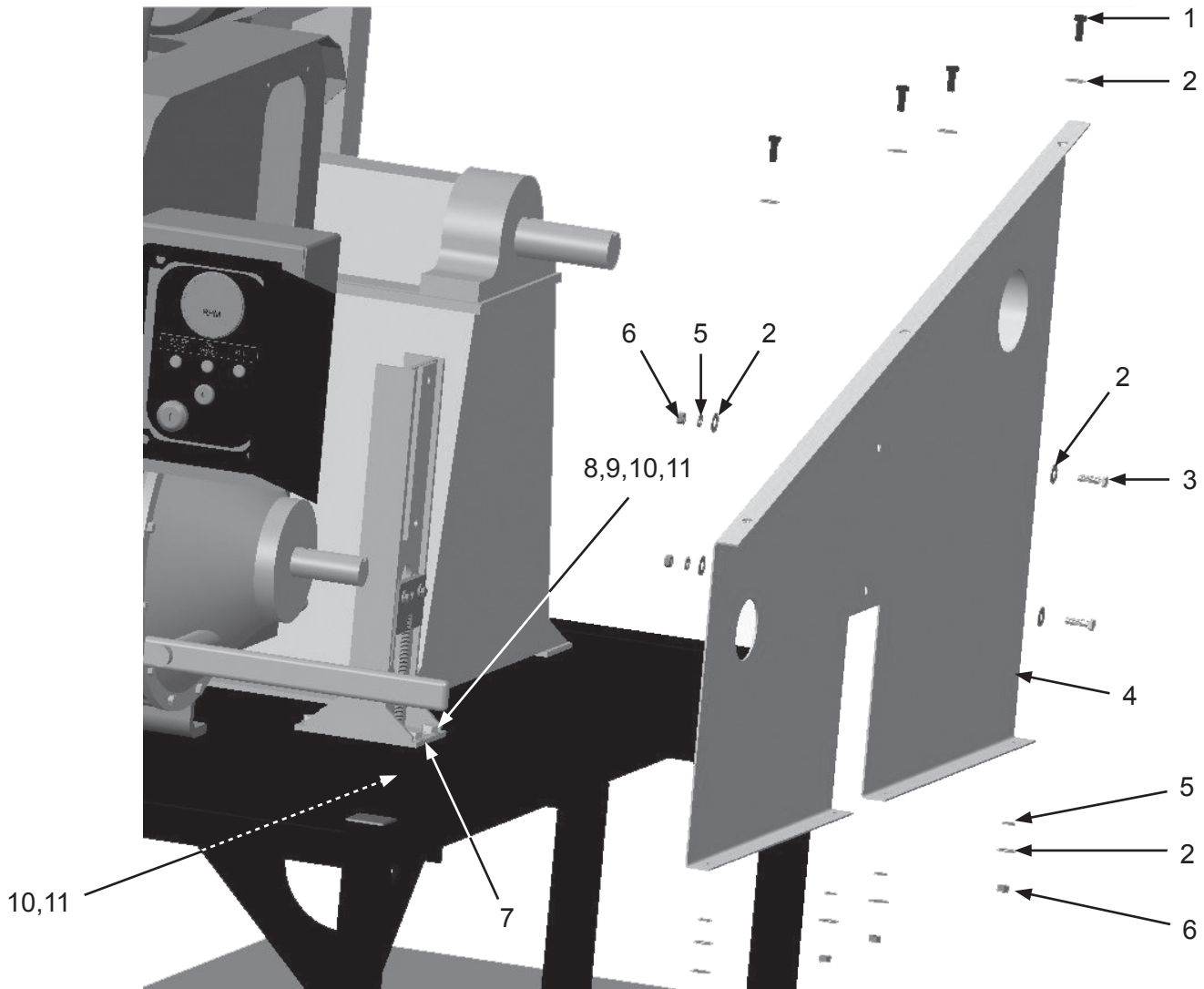
## PART NUMBERS AND SCHEMATICS

Figure 8: Fan Belt Assembly



## PART NUMBERS AND SCHEMATICS

Figure 9: Fan Belt Guard Back Assembly



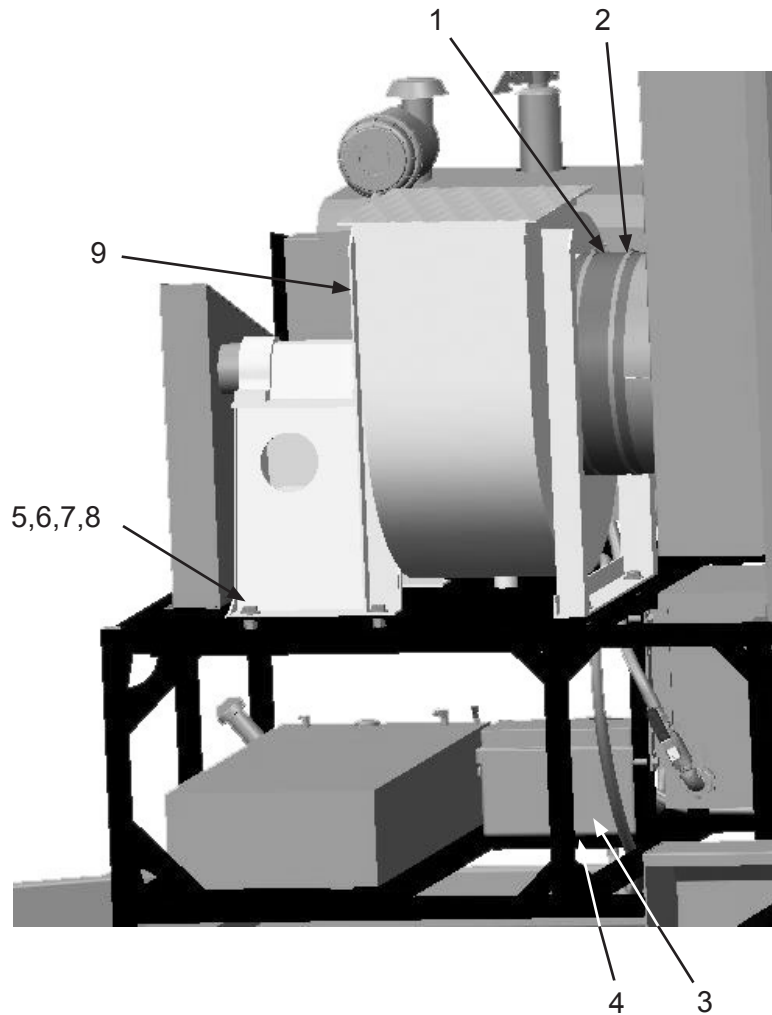
Item #	Part #	Description
--------	--------	-------------

Fig. 9

1	1011747	3/8-16 x 1" Bolt <i>(Four Required)</i>
2	10101942	3/8" Galvanized Flat Washer <i>(13 Required)</i>
3	10104234	3/8-16 x 1-1/4 Hex Bolt Zinc Grade 5 <i>(Two Required)</i>
4	10104899	Belt Guard Back
5	10101936	3/8" Zinc Lock Washer <i>(Six Required)</i>
6	1012318	3/8-16 Hex Nut <i>(Six Required)</i>
7	10104891	Belt Guard Mount
8	1014021	1/2-13 x 1-3/4" Hex Bolt <i>(Four Required)</i>
9	10100674	1/2" Flat Washer <i>(Five Required)</i>
10	10100675	1/2" Lock Washer <i>(Four Required)</i>
11	1014022	1/2-13 Hex Nut <i>(Six Required)</i>

## PART NUMBERS AND SCHEMATICS

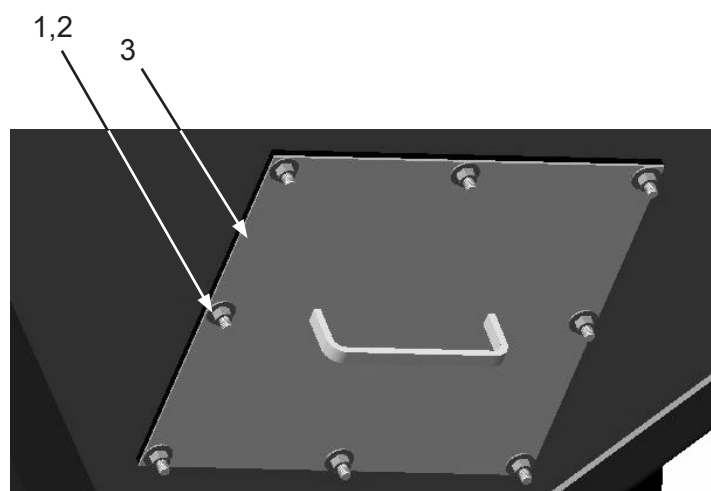
**Figure 10: Fan Assembly and Battery Box**



Item #	Part #	Description
<b>Fig. 10</b>		
1	10103962	Connection Rubber Gasket
2	10103416	Adjustable Clamp Fastener <i>(Two Required)</i>
3	10103342	Battery Box
4	10104890	Rubber Cushioning Pad
5	10103417	3/4-10 UNC x 1-3/4" Grade 8 Bolt <i>(Six Required)</i>
6	10103418	3/4" Washer <i>(12 Required)</i>
7	10103420	3/4-10 UNC Grade 8 Nut <i>(Six Required)</i>
8	10103419	3/4" Lock Washer <i>(Six Required)</i>
9	10104928	BI-200 Fan
—	10104920	Battery Cables <i>(Not Shown)</i>
—	10104918	Battery <i>(Not Shown)</i>

## PART NUMBERS AND SCHEMATICS

Figure 11: Access Panel Assembly



Item #	Part #	Description
--------	--------	-------------

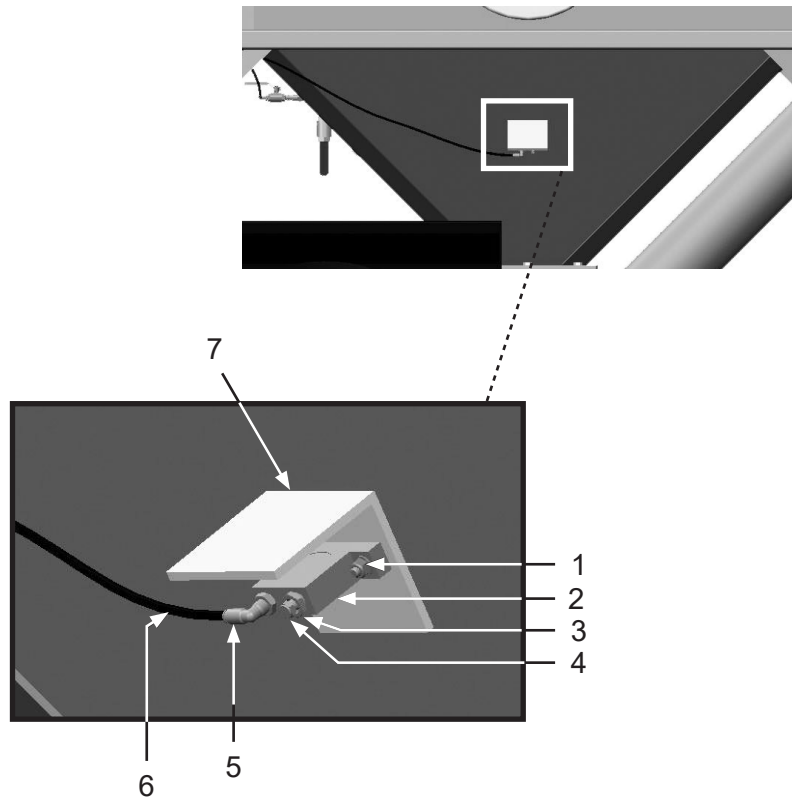
Fig. 11

1	1012318	3/8-16 Hex Nut ( <i>Eight Required</i> )
2	10101942	3/8" Flat Washer ( <i>Eight Required</i> )
3	10103792	Access Panel Door



## PART NUMBERS AND SCHEMATICS

Figure 12: Pneumatic Ball Vibrators



Item #	Part #	Description
<b>Fig. 12</b>		
1	10101939	1/4-20 Stainless Steel Lock Nut with Nylon Insert ( <i>Two Required</i> )
2	10103258	Pneumatic Ball Vibrator
3	20PFHA24SB0402	1/4" x 1/8" Reducing Bushing
4	1012905	1/8" Breather Muffler
5	20PFBA31095614	1/4" Tube x 1/4" NPT 90° Fitting
6	10103322	1/4" I.D. Black Urethane Tubing ( <i>Per Foot</i> )
7	10103609	Vibrator Shield

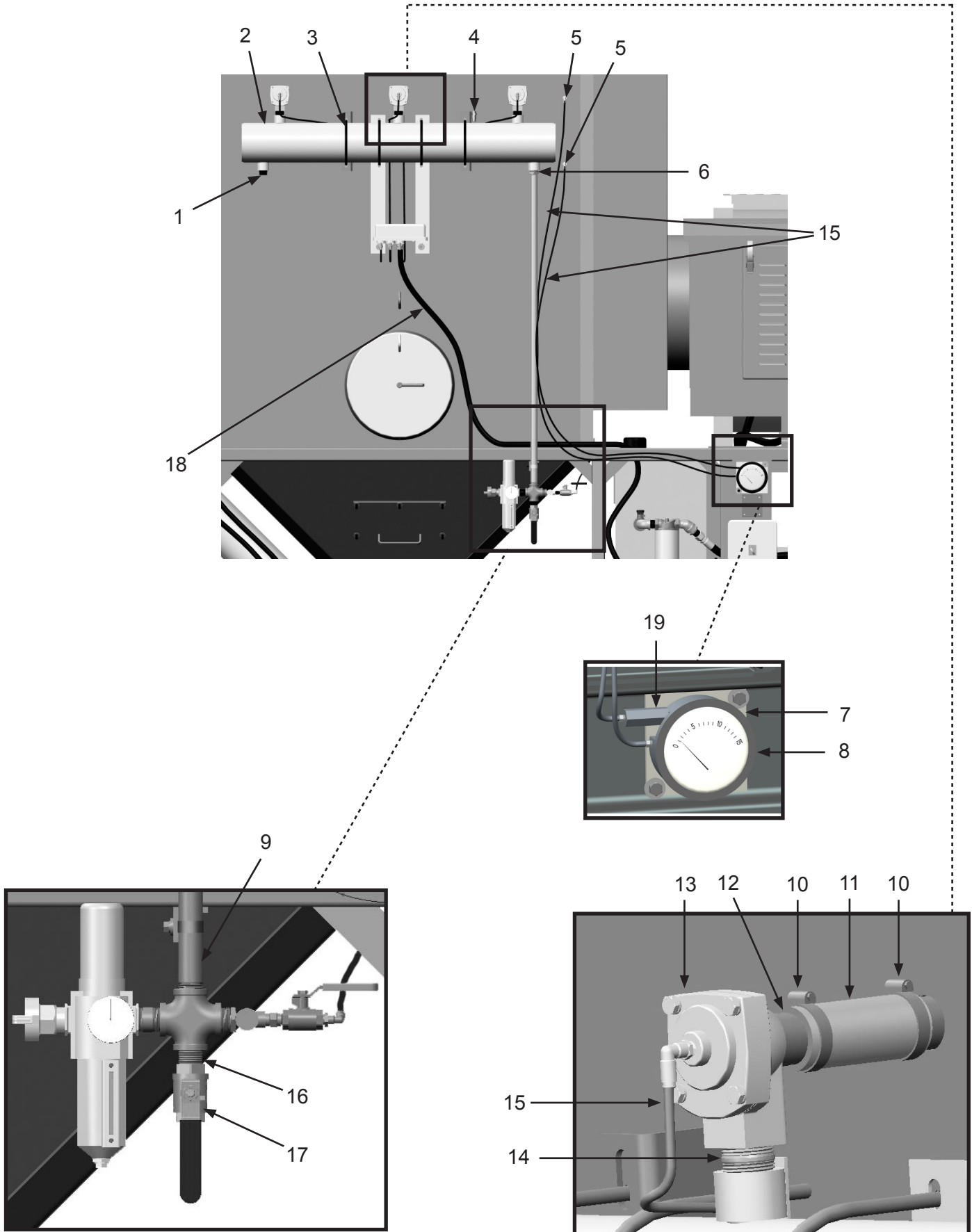
## PART NUMBERS AND SCHEMATICS

### Pulser System Assembly

Item #	Part #	Description
<b>Fig. 13</b>		
1	1011901	Galvanized 1" Square Head Plug
2	10103490	3 Pipe Header Tube
3	10103394	3/8-16 x 6" U-Bolt Assembly <i>(Four Required)</i>
4	1028607	1/4" NPT Pressure Relief Valve – 125 PSI
5	20PFBA31095614	1/4" Tube x 1/4" NPT 90° Fitting <i>(Two Required)</i>
6	20PFHA24SB1612	1" x 3/4" Reducing Bushing
7	10103608	Magnehelic Differential Pressure Gauge Mounting Bracket
8	10103259	Magnehelic Differential Pressure Gauge Assembly - Includes Mounting Hardware
9	10105197	3/4" x 48" Pipe Nipple
10	10104136	T-Bolt Clamp for 1-9/16" to 1-11/16" O.D. Hose <i>(Six Required)</i>
11	10103654	1-1/4" I.D. Marine Hose – 100 PSI <i>(Per Foot)</i>
12	10105207	1" x 3" Toe Nipple <i>(Three Required)</i>
13	10103255	1" Diaphragm Valve <i>(See Figure 23)</i>
14	10103318	1" x 2" Pipe Nipple <i>(Three Required)</i>
15	10103322	1/4" O.D. Black Urethane Tubing <i>(Per Foot)</i>
16	1011213	3/4" NPT Close Nipple - Galvanized
17	10L8074C	3/4" Full Port Ball Valve
18	10103304	Conduit - Flexible - 3/4"
19	10108373	1/8" NPT Inline Air Filter
—	10103654	Pulser Hose Assembly <i>(Three Required)</i>
—	10103954	1" Diaphragm Valve Service Kit <i>(Not Shown)</i>

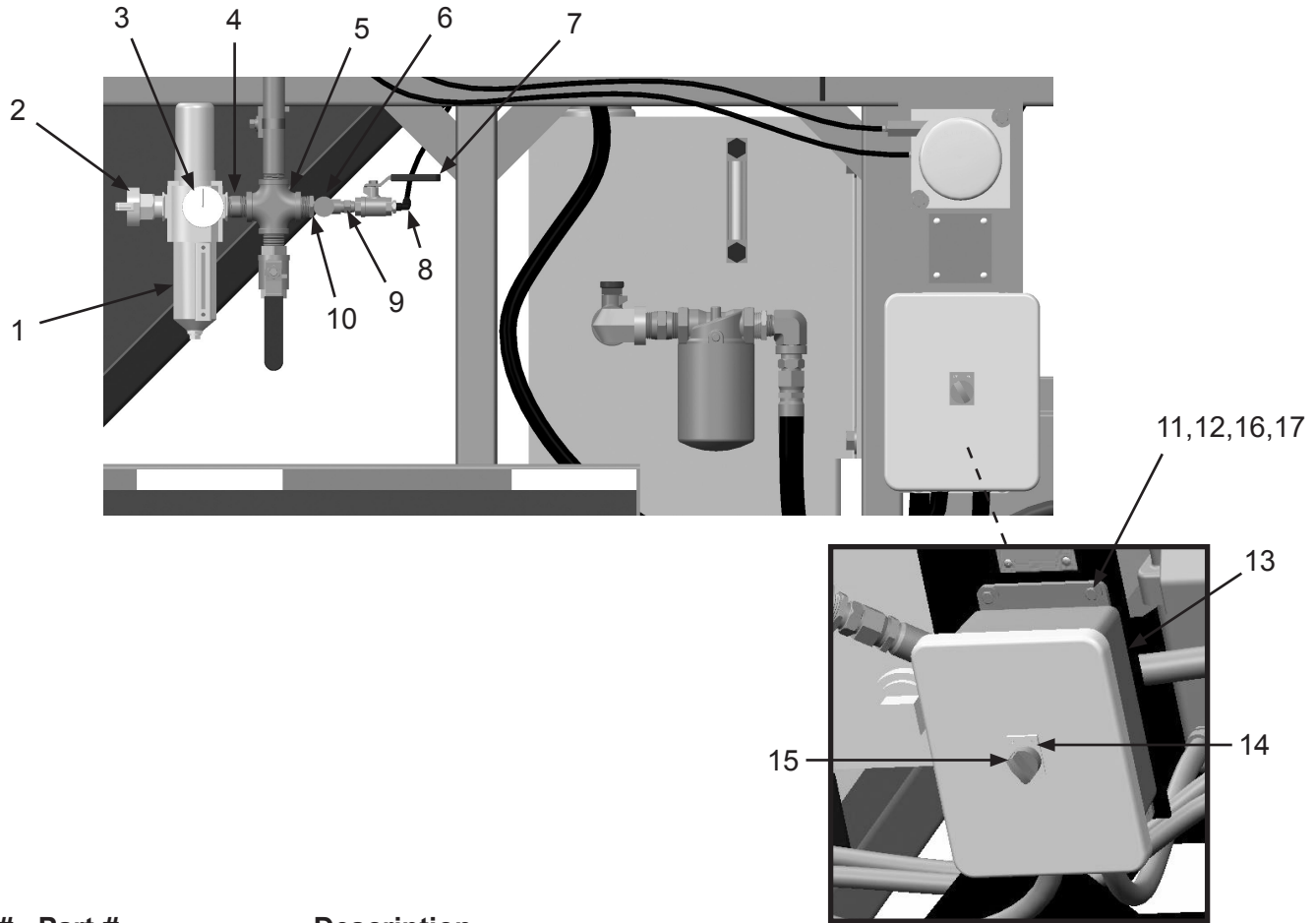
## PART NUMBERS AND SCHEMATICS

Figure 13: Pulser System Assembly



## PART NUMBERS AND SCHEMATICS

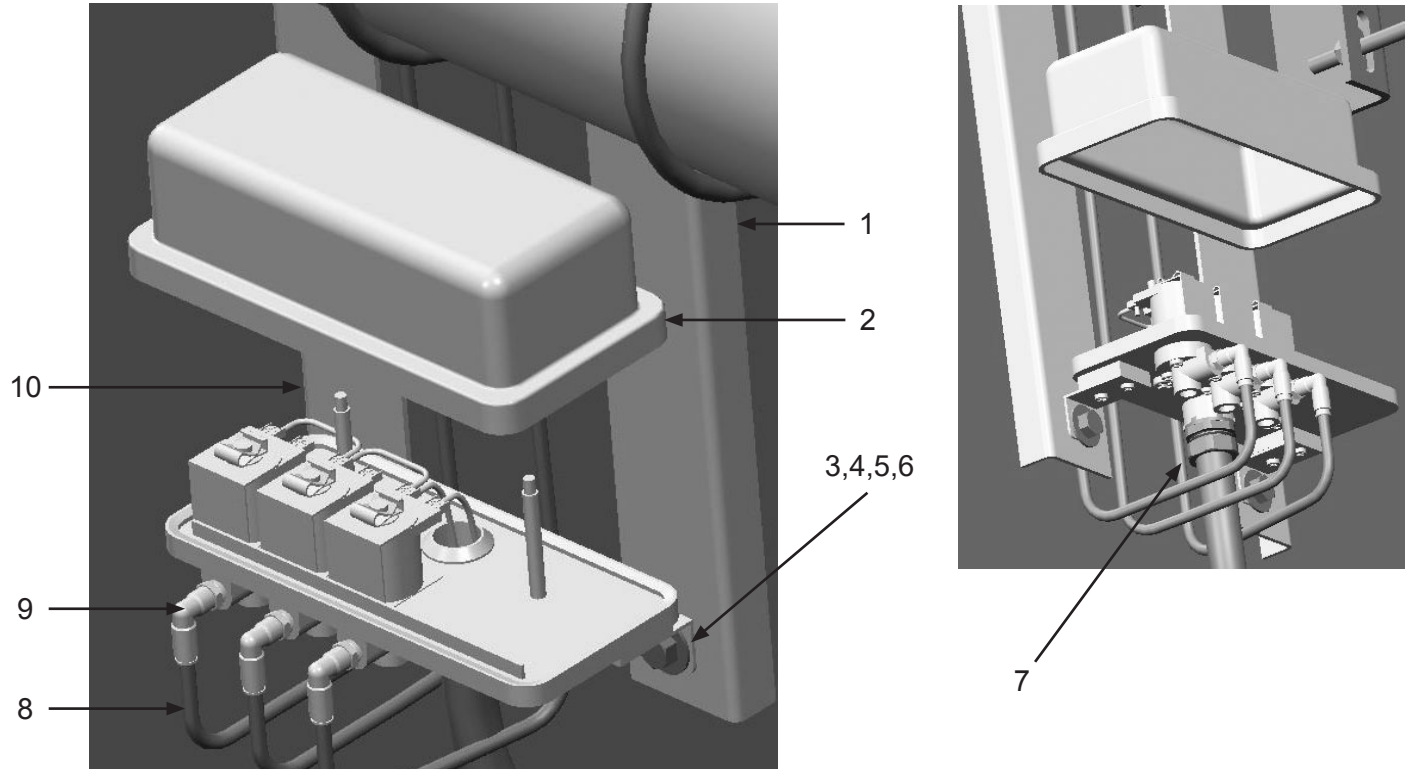
**Figure 14: Pulser Regulator and Timer Assembly**



Item #	Part #	Description
<b>Fig. 14</b>		
1	10103257	Excelon 74 Series Filter/Regulator
2	10ME1	3/4" Male 2-lug Coupling
3	1028606	Pressure Gauge 160 PSI 1/4" Back
4	10103317	3/4" x 2" Pipe Nipple
5	10105198	3/4" NPT Galvanized Cross
6	10103292	1/4" Needle Valve
7	1080050	1/4" Ball Valve
8	20PFBA31095614	1/4" Tube x 1/4" NPT 90° Fitting
9	1017019	1/4" x 1/4" Hex Nipple
10	20PFHA24SB1204	3/4" x 1/4" Reducing Bushing
11	10101937	1/4-20 x 1" Hex Bolt <i>(Four Required)</i>
12	10101940	1/4" Flat Washer <i>(Four Required)</i>
13	10103704	4 CH. Timer Board
14	10103414	On/Off Name Plate
15	10103305	2-Way Selector Switch
16	1012153	1/4" Lock Washer
17	10101347	1/4-20 Hex Nut
—	10103950	74 Series Filter/Regulator Service Kit
—	10103951	Filter Element <i>(Not Shown)</i>

## PART NUMBERS AND SCHEMATICS

Figure 15: Pulser Solenoid Enclosure Assembly



Item #	Part #	Description
--------	--------	-------------

**Fig. 15**

1	10102970	Solenoid Enclosure Mount – Right
2	10103705	Solenoid Pilot Valve Enclosure
3	10101936	3/8" Zinc Lock Washer ( <i>Two Required</i> )
4	1012318	3/8-16 Hex Nut ( <i>Two Required</i> )
5	10101942	3/8" Galvanized Flat Washer ( <i>Four Required</i> )
6	1011747	3/8-16 x 1" Bolt ( <i>Two Required</i> )
7	20RST50	Straight Liquid Tite Connection Fitting
8	10103322	1/4" O.D. Black Urethane Tubing ( <i>Per Foot</i> )
9	20100579	1/4" O.D. Tube x 1/8" NPT Swivel ( <i>Three Required</i> )
10	10102969	Solenoid Enclosure Mount – Left
—	10103955	Solenoid Valve ( <i>Three Required</i> )
—	10103956	Solenoid Coil ( <i>One Required per Solenoid</i> )
—	10103957	Solenoid Service Kit <i>Includes: O-ring, Plunger, Spring, Ferrule</i>

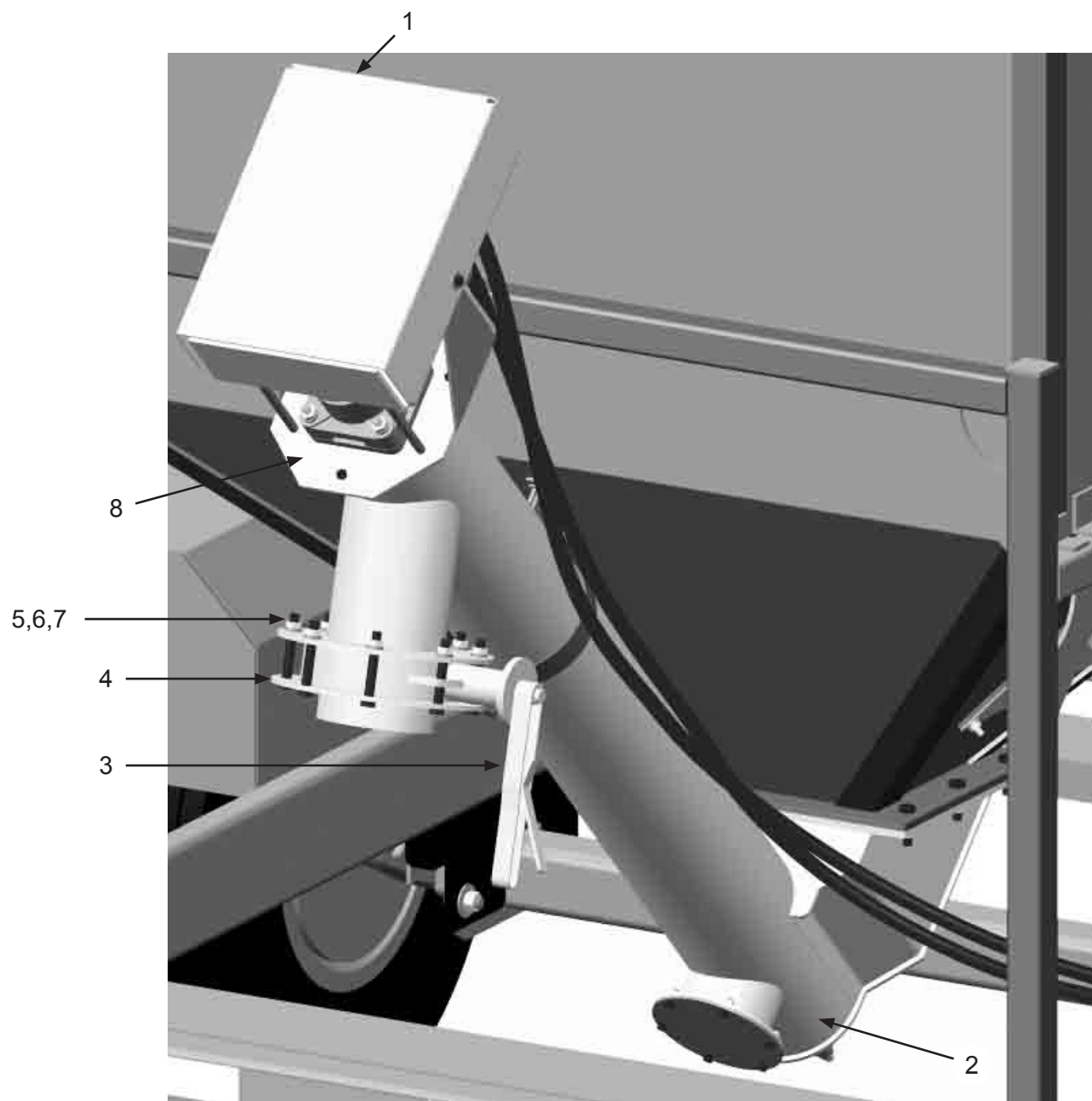
## PART NUMBERS AND SCHEMATICS

### Discharge Auger Assembly

Item #	Part #	Description
<b>Fig. 16</b>		
1	10103363	Discharge Chain Cover
2	10104276	Discharge Auger Tube
3	10103302	6" Series Wafer Butterfly Valve
4	10102971	Auger Discharge Drop Flange
5	10102703	1/2-13 x 3-1/2" Grade 5 Bolt ( <i>Eight Required</i> )
6	10100675	1/2" Lock Washer ( <i>Eight Required</i> )
7	1014022	1/2-13 Hex Nut ( <i>Eight Required</i> )
8	10104195	Discharge Auger Motor Mounting Bracket
—	10103880	White Conspicuity Tape ( <i>Per Inch</i> )
—	10103881	Red Conspicuity Tape ( <i>Per Inch</i> )

## PART NUMBERS AND SCHEMATICS

Figure 16: Discharge Auger Assembly



## PART NUMBERS AND SCHEMATICS

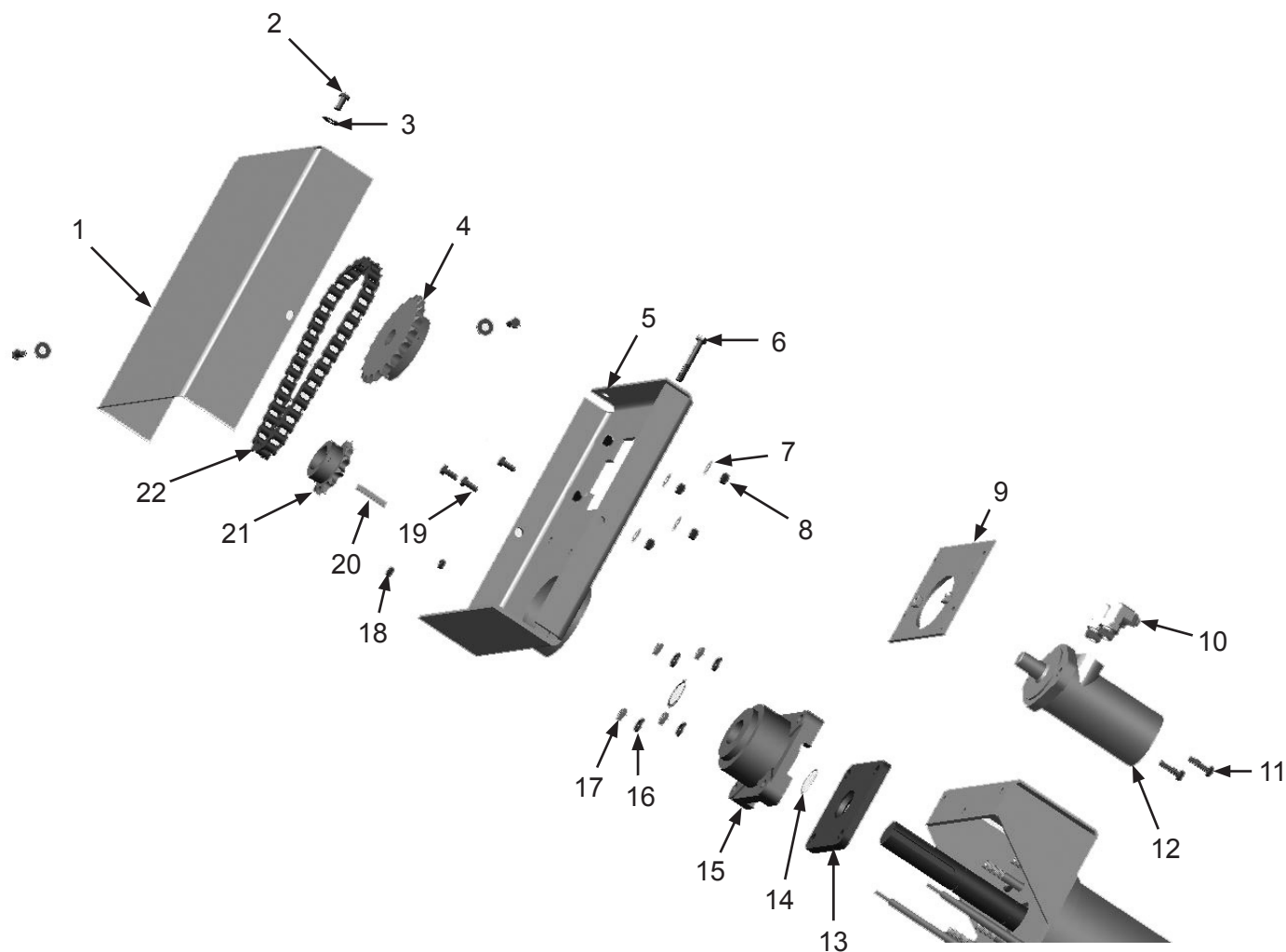
### Discharge Auger Drive Assembly

Item #	Part #	Description
<b>Fig. 17</b>		
1	10103363	Chain Cover
2	10103400	3/8-16 x 3/4" Bolt <i>(Three Required)</i>
3	1014241	3/8" Flat Washer <i>(Three Required)</i>
4	10104916	26-Tooth Sprocket
5	10104197	Chain Cover Base
6	10101933	3/8-16 x 2-1/2" Hex Bolt
7	1014241	3/8 SAE Flat Washer Zinc PL <i>(Four Required)</i>
8	1012318	3/8-16 Hex Nut <i>(Four Required)</i>
9	10104199	Sliding Motor Mount
10	10103308	JIC 8 x SAE 10 90° Elbow <i>(Two Required)</i>
11	10104234	3/8-16 x 1-1/4" A307 Bolt Galvanized <i>(Two Required)</i>
12	10102887	Hydraulic Motor
13	10102902	Seal Plate
14	10103605	Snap Ring <i>(Two Required)</i>
15	10102903	Thrust Bearing
16	10100675	1/2" Lock Washer <i>(Four Required)</i>
17	1014022	1/2-13 Hex Nut <i>(Four Required)</i>
18	1035046	5/16-18 Nut <i>(Two Required)</i>
19	10101346	5/16-18 x 3/4" L Grade 5 Bolt <i>(Three Required)</i>
20	10103641	3/8 Key Cut
21	10102886	13-Tooth Sprocket
22	10104191	Discharge Auger Chain Kit <i>Includes part #'s 10103392, 10103391, 10103614.</i>
—	10103392	Connecting Link #60
—	10103391	Cottered Roller Chain #60 <i>(Per Foot)</i>
—	10103614	Offset Link #60
—	10103940	Seal Kit for Hydraulic Motor



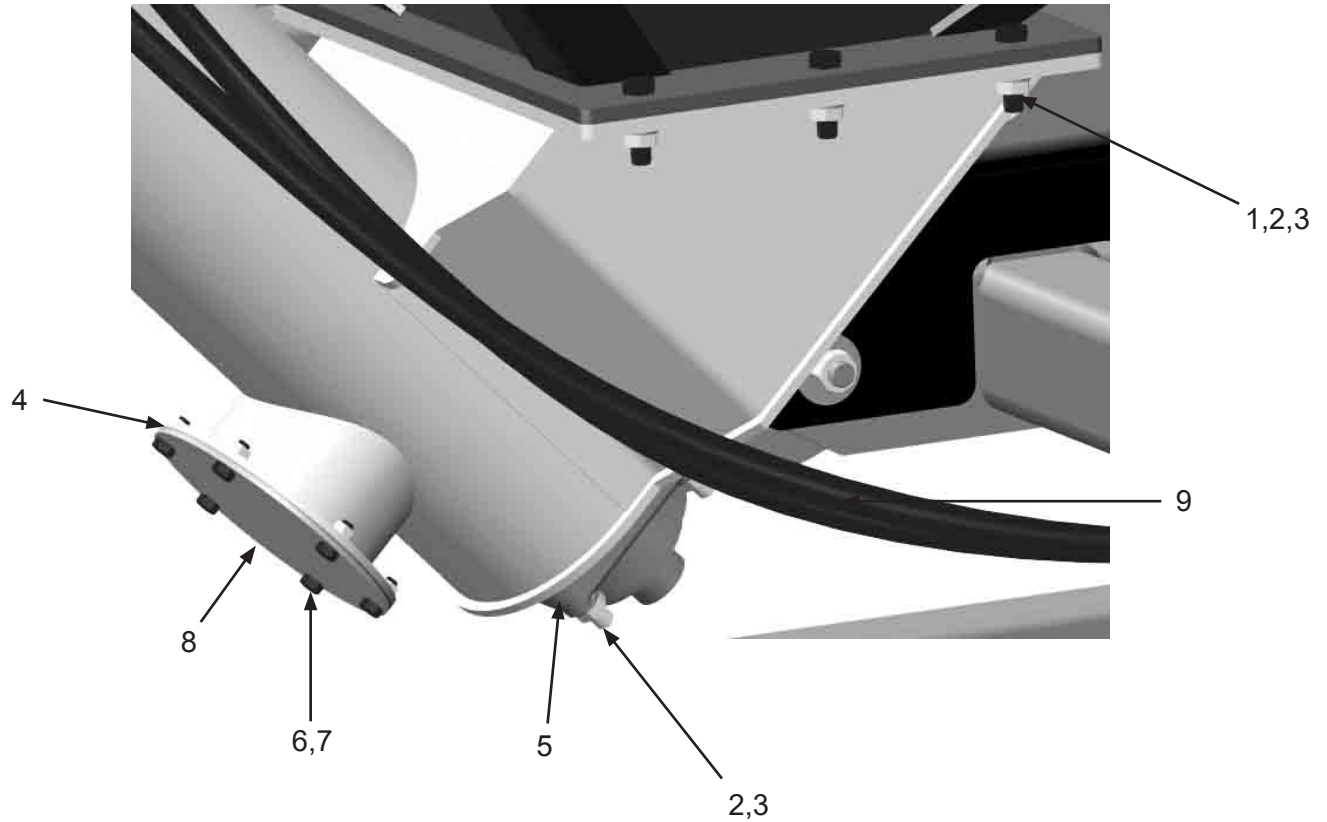
## PART NUMBERS AND SCHEMATICS

Figure 17: Discharge Auger Drive Assembly



## PART NUMBERS AND SCHEMATICS

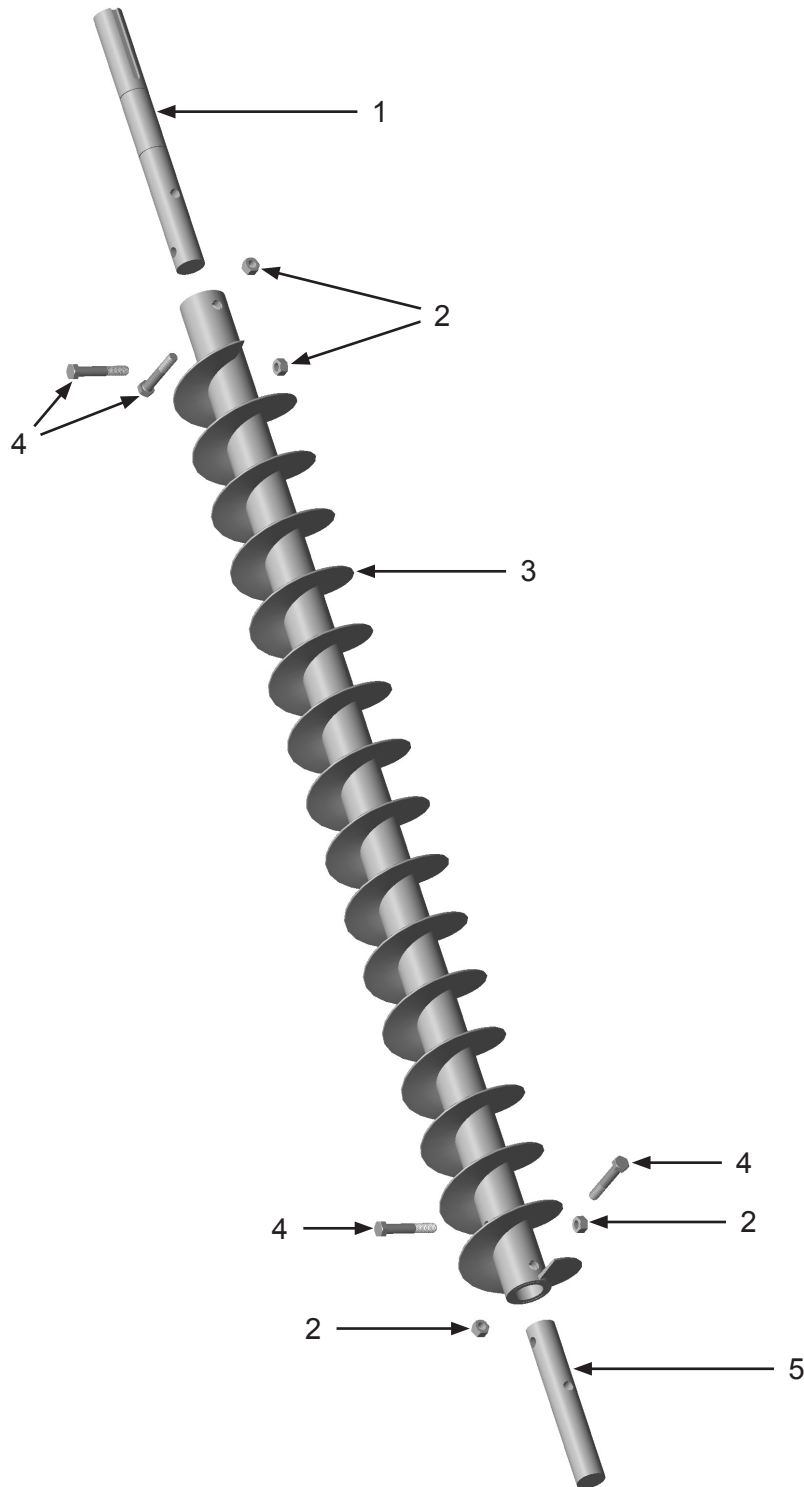
**Figure 18: Discharge Auger Clean-out Assembly**



Item #	Part #	Description
<b>Fig. 18</b>		
1	10100674	1/2" Flat Washer ( <i>Six Required</i> )
2	10100675	1/2" Lock Washer ( <i>Six Required</i> )
3	1014022	1/2-13 Hex Nut ( <i>Six Required</i> )
4	10103716	Neoprene Auger Clean-out Gasket
5	10102902	Seal Plate
6	10101346	5/16-18 x 3/4" Bolt ( <i>Six Required</i> )
7	1035046	5/16-18 Nut ( <i>Six Required</i> )
8	10103235	Auger Clean-out Cover
9	10102880	Discharge Auger Lower Bearing Assembly

## PART NUMBERS AND SCHEMATICS

Figure 19: Discharge Auger Assembly



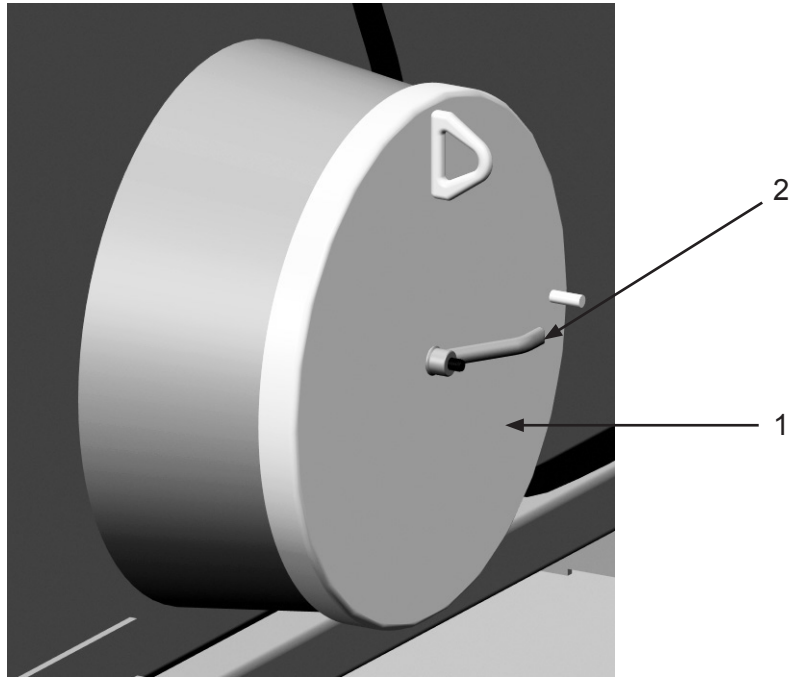
Item #	Part #	Description
--------	--------	-------------

Fig. 19

1	10103306	Drive Shaft
2	1014022	1/2-13 Hex Nut ( <i>Four Required</i> )
3	10102883	58" x 6" Half Pitch Auger
4	10103401	1/2-13 x 3" Galvanized Bolt ( <i>Four Required</i> )
5	10102910	Auger Shaft End

## PART NUMBERS AND SCHEMATICS

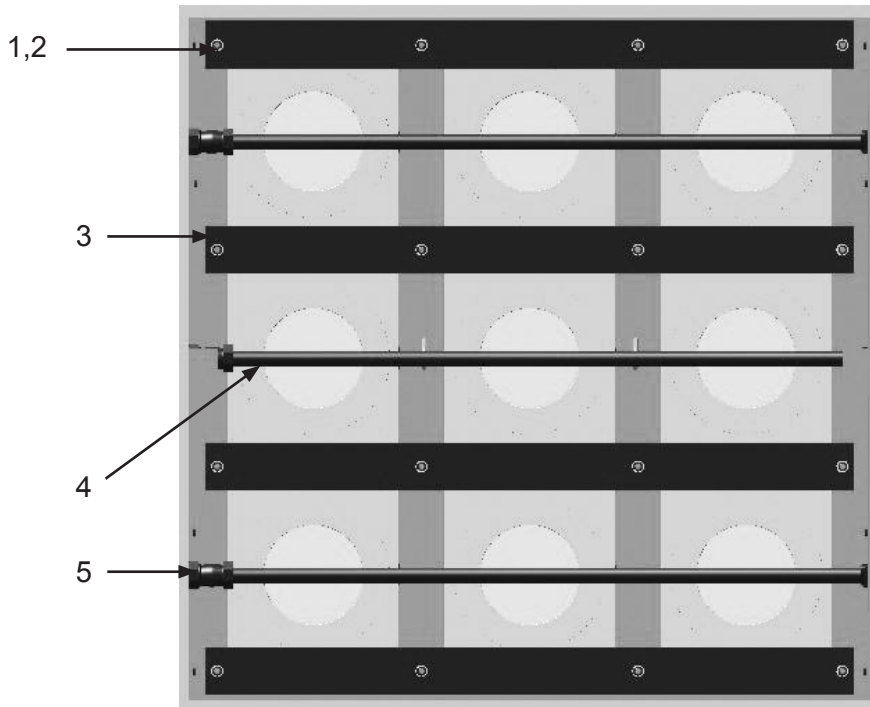
Figure 20: Inlet Door Assembly



Item #	Part #	Description
<b>Fig. 20</b>		
1	10106213	16" Inlet Cover <i>(Two Required)</i>
2	10105960	3/8-16 Handle Zinc <i>(Four Required)</i>
—	10102339	Camlock Closure - Chain
—	10102410	Spring Snap Hook - 1/4" <i>(Two Required Per Inlet)</i>

## PART NUMBERS AND SCHEMATICS

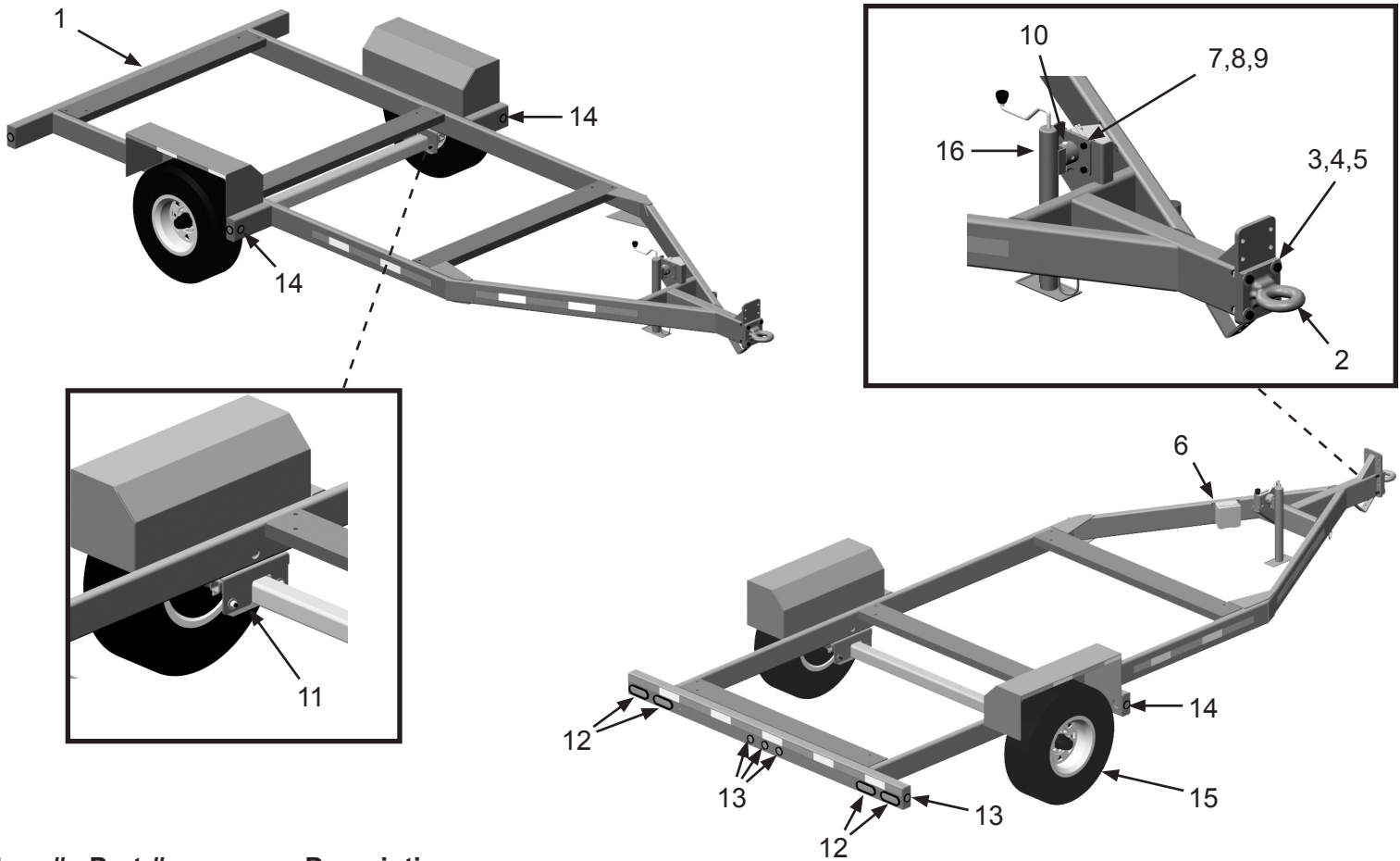
**Figure 21: Dust Collector Filter Cartridge Pulsers**



Item #	Part #	Description
<b>Fig. 21</b>		
1	10100674	1/2" Flat Washer (16 Required)
2	1014022	1/2" Hex Nut (16 Required)
3	10103823	Filter Bolt-Down (Four Required)
4	10103791	Pulser System Blowpipe (Three Required)
5	10102599	Compression Coupling Assembly (Three Required)

## PART NUMBERS AND SCHEMATICS

Figure 22: Trailer



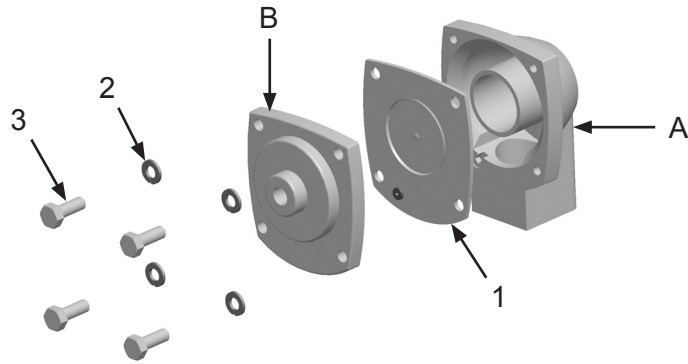
Item #	Part #	Description
--------	--------	-------------

Fig. 22

1	10104333	4 Ton Trailer
2	10104079	Pintle Hitch with Flat Plate
3	10105746	5/8 x 2-1/2" Grade 8 Bolt <i>(Four Required)</i>
4	10105747	5/8 Reverse Lock Nut <i>(Eight Required)</i>
5	10103398	5/8" Flat Washer <i>(Eight Required)</i>
6	10104081	Breakaway Kit
7	10105874	1/2-13 x 1-1/2" Grade 5 Bolt
8	10100674	1/2" Flat Washer
9	20100124	1/2-13 Hex Lock Nut - Zinc
10	10104709	1/2" x 3-1/2" Pin - Zinc
11	10105875	Bracket & Hardware Kit For 8000# Axel
12	10104084	Red LED Oval Tail Light <i>(Four Required)</i>
13	10104086	2" Round Red LED Clearance Light <i>(Five Required)</i>
14	10104087	2" Round Amber LED Clearance Light <i>(Four Required)</i>
15	10104143	215/75R17.5 16-Ply Tire with 17.5" 8-Hole Mod Rim <i>(Two Required)</i>
16	10104141	7,000# Heavy Duty Drop Leg-Top Wind Jack
—	10104082	Wire Harness
—	10104080	3/8" x 35" Chain with Hook
—	109V582	Operator's Manual - Behnke Trailer

## PART NUMBERS AND SCHEMATICS

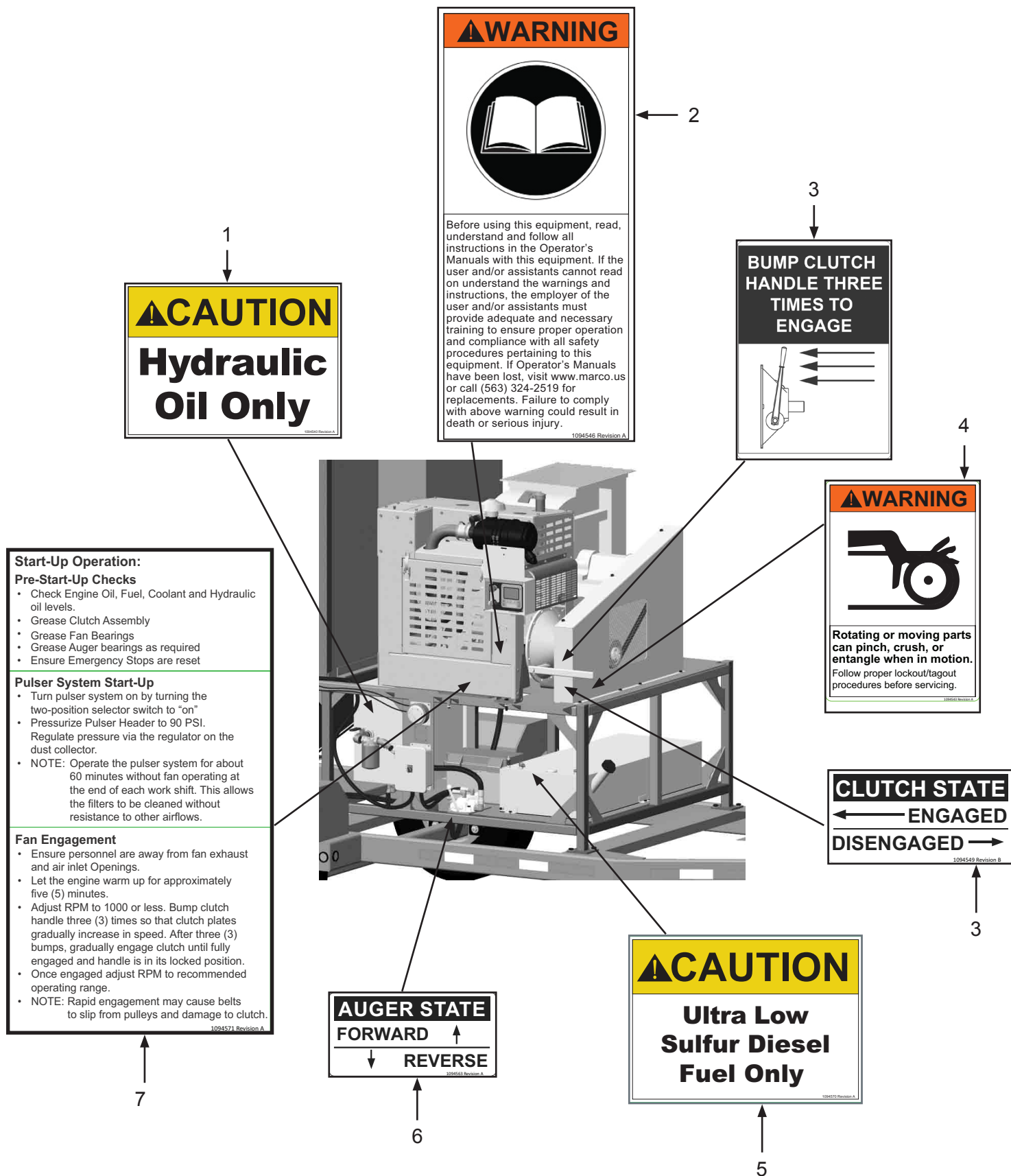
Figure 23: Diaphragm Valve



Item #	Part #	Description
<b>Fig. 23</b>		
—	10103255	1" Diaphragm Valve – Complete <i>(Three Required)</i> <i>Includes Items: A,B,1,2,3</i>
1	10103954	1" Diaphragm Valve
2	1012153	1/4" Lock Washer <i>(Four Required)</i>
3	20101232	M6 x 1 x 14 HHCS <i>(Four Required)</i>

# PART NUMBERS AND SCHEMATICS

Figure 24: Hazard Identification Decals





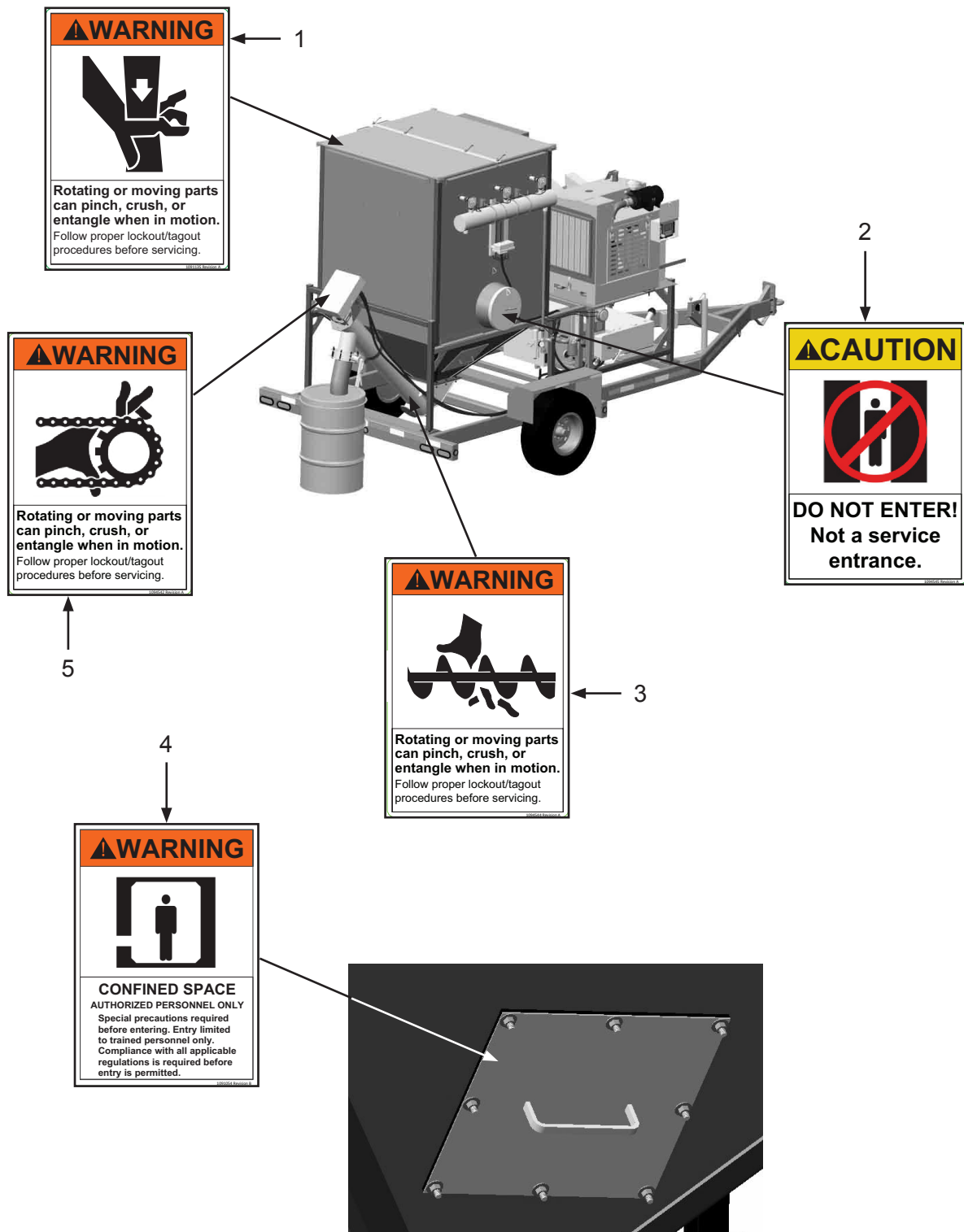
## PART NUMBERS AND SCHEMATICS

**Figure 24: Hazard Identification Decals**

Item #	Part #	Description
<b>Fig. 24</b>		
1	1094540	Hydraulic Oil Caution Decal
2	1094546	Read Manual Warning Decal
3	1094549	Clutch State Decal
4	1094543	Rotating or Moving Parts Warning Decal
5	1094570	Ultra Low Sulfur Diesel Fuel Only Caution Decal
6	1094563	Auger State Decal
7	1094571	Start-Up Operation Decal

## PART NUMBERS AND SCHEMATICS

Figure 25: Hazard Identification Decals (Cont.)



## PART NUMBERS AND SCHEMATICS

**Figure 25: Hazard Identification Decals (Cont.)**

Item #	Part #	Description
<b>Fig. 25</b>		
1	1091135	Rotating or Moving Parts Warning Decal
2	1094545	Do Not Enter Caution Decal
3	1094544	Rotating or Moving Parts Warning Decal
4	1091054	Confined Space Warning Decal
5	1094542	Rotating or Moving Parts Warning Decal

## LITERATURE REFERENCES

### **Dustmaster® 8,000 CFM Tier 4 Diesel Dust Collector**


106M151	Part Numbers & Schematics Guide – Dustmaster® 8,000 CFM Tier 4 Diesel Dust Collectors
1090151	Operator's Manual – Dustmaster® 8,000 CFM Tier 4 Diesel Dust Collectors
109V569	Operator's Manual - Perkins® Engine
109V037	Operator's Manual – Dynamic Fan Corporation
109V040	Operator's Manual - Hydraulic Motor
109V582	Operator's Manual - Behnke Trailer

## OPTIONAL ACCESSORIES



### REPLACEMENT DUST COLLECTOR FILTER CARTRIDGES

Part Numbers	Material	I.D.	O.D.	Length
10102033	85/15	8.38"	12.75"	30"
10105561	Reduced Pleat	8.38"	12.75"	30"
10105562	Fire Retardant	8.38"	12.75"	30"
1010005946	HEPA	8.38"	12.75"	30"
10105563	Spunbond	8.38"	12.75"	30"


### 16" I.D. DUCT HOSE

	Part Numbers	Length	Pitch	Bend Radius	Body Material	Wear Strip Material	Wear Strip Color
	10DH1625HD	25 Ft.	1-1/2"	14"	2-Ply Vinyl-Coated Polyester	PVC	Red
	10DH1650HD	50 Ft.	1-1/2"	14"	2-Ply Vinyl-Coated Polyester	PVC	Red
	15DH1625	25 Ft.	2"	16.8"	2-Ply Vinyl-Coated Polyester	PVC	Red

### 16" I.D. DUCT HOSE COUPLING AND SCREW CLAMP

	Part Numbers	Style	Hose I.D.
	1017116	Stainless Steel Coupling	16"
	10DH202201600	Stainless Steel Screw Clamp	16"

### DUCT HOSE ADAPTERS

Part Numbers	Dimensions	Material
 15DH73795060	24" x 16"	Carbon Steel

## OPTIONAL ACCESSORIES



### Part Numbers

3/4" I.D. X 1-1/4" O.D. AIR HOSE WITH COUPLINGS INSTALLED						
	Length	Hose I.D.	Hose O.D.	Working Pressure	Hose Cover Color	Couplings
10AH034AC	50 Ft.	3/4"	1-1/4"	200 PSI	Red	2-Lug Crimped On



### Part Numbers

3/4" I.D. X 1-1/4" O.D. AIR HOSE					
	Length	Hose I.D.	Hose O.D.	Working Pressure	Hose Cover Color
10AH034	Per Ft.	3/4"	1-1/4"	200 PSI	Red




### Part Numbers

MALE HOSE END COUPLING AND GASKET FOR 3/4" I.D. AIR HOSE						
	Hose I.D.	Material	Coupling Style	GASKET		
				Rubber Gasket	Gasket I.D.	Gasket O.D.
10HE1	3/4"	Plated Iron	2-Lug	10UG2	3/4"	1-3/8"

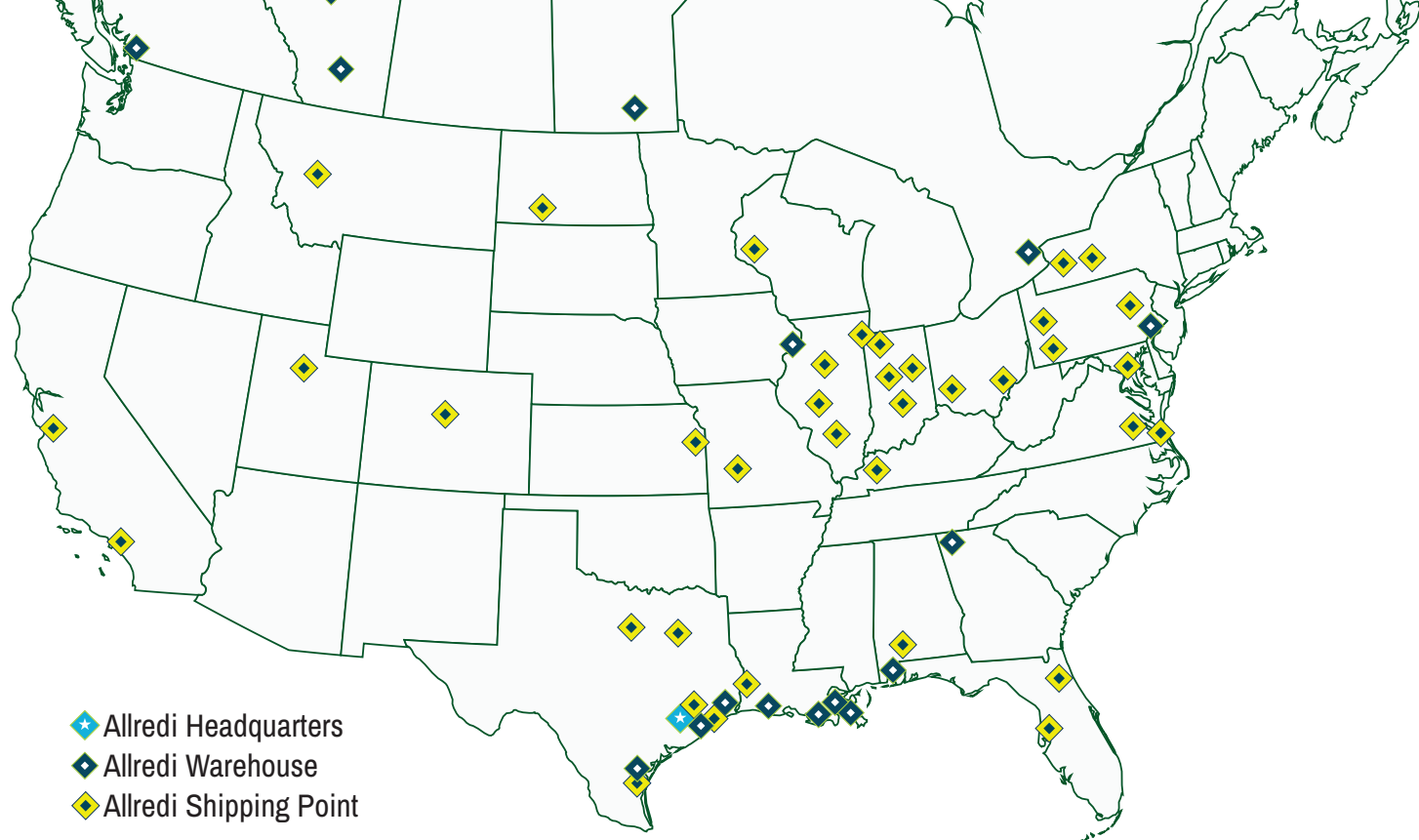





### Part Numbers

 <b>Part Numbers</b>	<b>BOSS® CLAMP FOR 3/4" I.D. AIR HOSE</b>		
	<b>Hose I.D.</b>	<b>Hose O.D. Range</b>	<b>Material</b>
<b>10A9</b>	3/4"	1-8/64" – 1-20/64"	Plated Steel

## MAINTENANCE NOTES

[illegible]



-  Allredi Headquarters
-  Allredi Warehouse
-  Allredi Shipping Point

## ALLREDI THERE

Serving these industries: Bridge, Pipeline, Tank & Tower, Concrete Services, Rail, Shipyard & Marine, Pools & Fountains, and Foundry

### UNITED STATES

**Pasadena, TX (Headquarters)**  
844.361.7038

**Beaumont, TX**  
409.722.1284

**Bristol, PA**  
215.826.8080

**Corpus Christi, TX**  
361.887.2038

**Davenport, IA**  
563.324.2519

**Deer Park, TX**  
(Service & Rental Location)  
281.930.0905

**Duluth, GA**  
800.535.4564

**Gonzales, LA**  
225.647.7575

**Harvey, LA**  
504.367.8090

**Houma, LA**  
985.580.4273

**Lafayette, LA**  
337.267.1440

**Theodore, AL**  
251.338.7525

### CANADA

**Calgary, Alberta**  
403.279.1924

**Coquitlam, BC**  
604.464.6979

**Edmonton, Alberta**  
780.468.2588 (Manus)  
780.425.5510 (Mod-U-Blast)

**Hamilton, Ontario**  
905.527.6000 / 888.794.5665

**Mississauga, Ontario**  
905.890.5837

**Winnipeg, Manitoba**  
204.256.3324

**WWW.ALLREDI-US.COM / 800.252.7848**

**WWW.ALLREDI-CA.COM / 800.661.3842**

Allredi™ and Marco® are registered trademarks of Allredi, LLC.  
Mod-U-Blast® is a registered trademark of Allredi Blast & Abrasives Canada, Inc.  
All other brand names or marks are used for identification purposes and are trademarks of their respective owners.

**ALLREDI™**

Literature #106M151\_3/1/2024