



# MARCO® 8,000 CFM ELECTRIC DUST COLLECTOR



## PART NUMBERS AND SCHEMATICS GUIDE

## Company Profile

Allredi was formed in the early 2020, when two of the largest distributors in the blasting, coating, safety, and environmental industry, APE Companies and Marco Group International, joined forces. While the qualities both companies are known for have not changed, a lot about our business is new. New abilities. New agilities. New ways to help you win. This calls for a new name, Allredi.

This name exemplifies what we have become. It is completely oriented to the needs of our customers. To your needs. It says that when you call us for anything – products, service, expert advice, anything – you can consider it done. Or even better, Allredi done.

We are your right-now supplier. From skills to SKUs, we deliver the goods fast. So you can be more agile every minute, every day. This is who we are. This is what our new name means. Go ahead and expect excellence, because we're bringing it.

## Our Mission and Vision

To be the industry's preferred partner in surface preparation solutions through unrivaled technical expertise, customer experience, product availability, and tailored service offerings.

## The Allredi Difference

- **Industry Experience** – With Allredi on your team, you have access to expertise which can only come from decades of industry leadership. We have organized our engineering department, production specialists, customer operations, and safety support into a "Center of Competence." As an Allredi customer, you have access to hundreds of years of cumulative experience related to your operations.
- **Manufacturing Excellence** – Allredi is a U.S. based manufacturer of equipment for the Surface Preparation and Protective Coatings industries. Allredi's engineers benchmark the industry to ensure that we design and manufacture superior products that set the "Gold Standard" for performance, safety, and quality.
- **Legendary Customer Service** – Allredi's legendary customer service team is staffed by friendly, highly-trained individuals who are focused on providing the highest level of product support, order accuracy, and customer satisfaction.
- **Product Availability** – We stock over 10,000 SKU's and have over 45 shipping locations to serve North American and International markets for all major brands of blasting, coating, environmental, and safety equipment. Allredi is your right-now supplier, so you can keep your projects moving. From our foundation of strong relationships, we have built a nationwide network that puts vast inventory and ready service close to our customers. We provide advanced expertise, and we deliver the goods fast – so you can easily access the products and services you need to me more agile every minute, every day.
- **Technology Leadership** – Our website provides: Operator's Manuals, Part Numbers and Schematics Guides, SDS information, and key product features and specifications, providing access to information 24/7.

# TABLE OF CONTENTS

<b>Company Profile</b> .....	<b>1</b>
<b>Table of Contents</b> .....	<b>2</b>
<b>Part numbers</b> .....	<b>3</b>
<b>Specifications</b> .....	<b>4</b>
<b>Part Numbers and Schematics</b> .....	<b>5</b>
Front Assembly .....	5
Fan Belt Assembly .....	7
Fan Belt Guard Back Assembly .....	8
Fan Assembly .....	9
Access Panel Assembly .....	10
Pneumatic Ball Vibrators .....	10
Pulser System Assembly .....	11
Pulser Regulator and Timer Assembly .....	13
Pulser Solenoid Enclosure Assembly .....	14
Discharge Auger Assembly .....	15
Discharge Auger Drive Assembly .....	17
Discharge Auger Clean-out Assembly .....	19
Discharge Auger Assembly .....	20
Inlet Door Assembly .....	21
Diaphragm Valve .....	21
Dust Collector Filter Cartridge Pulsers And Filters ..	22
Trailer .....	23
Dust Collector Filter Cartridge Hatch Door .....	25
Hazard Identification Decals .....	26
<b>Literature References</b> .....	<b>28</b>
<b>Optional Accessories</b> .....	<b>29</b>

## PART NUMBERS

Part Numbers	MARCO® 8,000 CFM ELECTRIC DUST COLLECTOR								
	Filter Cartridge Material						Trailer Mount	Skid Mount	Filter Cartridge Quantity
	None	High Density 85% Cellulose/15% Poly Blend	Reduced Pleat 85% Cellulose/15% Poly Blend	Fire Retardant	HEPA	Spunbond			
10105547	X						X		1
10104316		X					X		9
10105548			X				X		9
10105549				X			X		9
10105550					X		X		9
10105551						X	X		9
10106646	X							X	1
10106647		X						X	9
10106648			X					X	9
10106649				X				X	9
10106550					X			X	9
10106551						X		X	9





## SPECIFICATIONS

<b>Performance:</b>	CFM : 4770—8241 W.C. 0—12"
<b>Filter Cartridge Style:</b>	Open Top with Flange, Closed Bottom 9 Required
<b>Filter Cleaning:</b>	Pulse System, 5—15 second intervals Pulse Duration: 200—350 millisecond
<b>Air to Cloth Ratio:</b>	3.39:1 @ 8,000 CFM
<b>Filter Area:</b>	2,363 square feet
<b>Efficiency:</b>	85/15 Blend Filters – 99.8% @ 0.5 micron Reduced Pleat – 99.8% @ 0.5 micron HEPA Filters – 99.99% @ 0.3 micron Fire Retardant Filters – 96.8% @ 2.0 micron Spunbond Filters – 97% @ 3.0 micron
<b>Ducting Connections:</b>	16" I.D., Quantity of Two
<b>Clean-out Ports:</b>	One
<b>Dust Removal Conveyor:</b>	Single 6" Discharge Auger, Electric Motor Drive
<b>Fan:</b>	Backward Inclined, non-overloading, spark resisting
<b>Motor:</b>	25 Horsepower Electric 3-Phase
<b>Electrical System:</b>	460 V, 60 Hz 29 FLA
<b>Air Requirements:</b>	Clean, Dry, Compressed Air 24 CFM @ 90 PSI
<b>Unit Dimensions: Trailer Model:</b>	Weight: Approximately 5,509 pounds (empty) Length: 19' 8" Width: 8' Height: 9' 11"
<b>Unit Dimensions: Skid Model:</b>	Weight: Approximately 5,509 pounds (empty) Length: 13' 10" Width: 6'8" Height: 10'1"

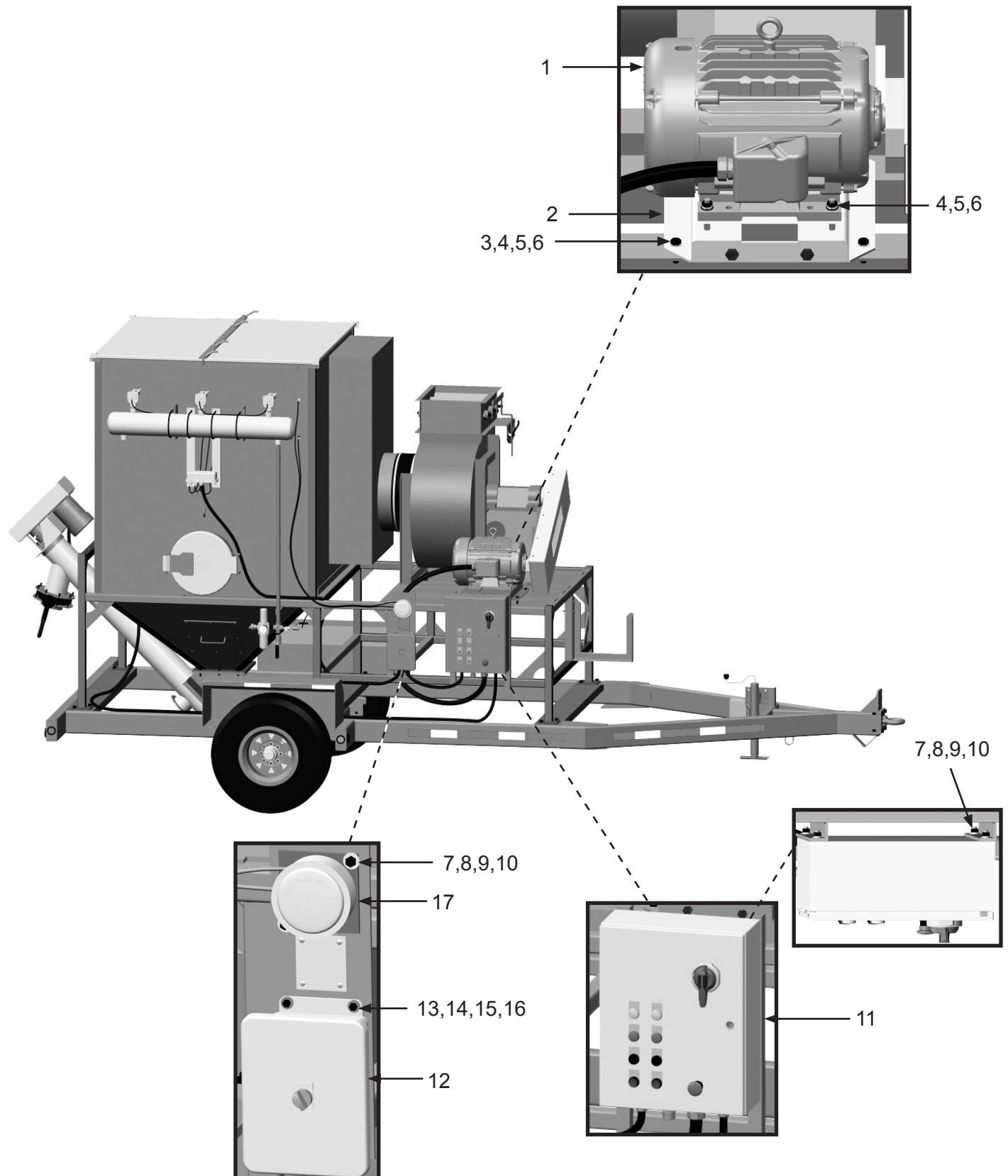
## PART NUMBERS AND SCHEMATICS

### Front Assembly

Item #	Part #	Description
<b>Fig. 1</b>		
1	10104334	25hp Motor
2	10104335	Adjustable Motor Base
3	1014021	1/2-13 x 1-3/4 Hex Bolt ( <i>Four Required</i> )
4	10100674	1/2" Flat Washer ( <i>12 Required</i> )
5	1014022	1/2-13 Hex Nut ( <i>Eight Required</i> )
6	10100675	1/2" Lock Washer ( <i>Eight Required</i> )
7	1011747	3/8-16 x 1" Bolt ( <i>Eight Required</i> )
8	10101936	3/8" Lock Washer – Zinc ( <i>Eight Required</i> )
9	10101938	3/8-16 Hex Nut – Galvanized ( <i>Eight Required</i> )
10	10101942	3/8" Flat Washer ( <i>12 Required</i> )
11	10104356	Control Panel for Marco® 8,000 CFM Electric Dust Collector
12	10103848	4 Ch. 12-Volt Timer Board with Enclosure
13	10101937	1/4-20 x 1" Grade 5 Bolt ( <i>Four Required</i> )
14	10101940	1/4" Flat Washer ( <i>Eight Required</i> )
15	1012153	1/4" Lock Washer ( <i>Four Required</i> )
16	10101347	1/4-20 Hex Nut ( <i>Four Required</i> )
17	10103259	Magnehelic Differential Pressure Gauge
—	1015590	8/4 SO Power Cord — Black ( <i>Per Foot</i> )
—	10104364	12/4 SJ Power Cord ( <i>Per Foot</i> )

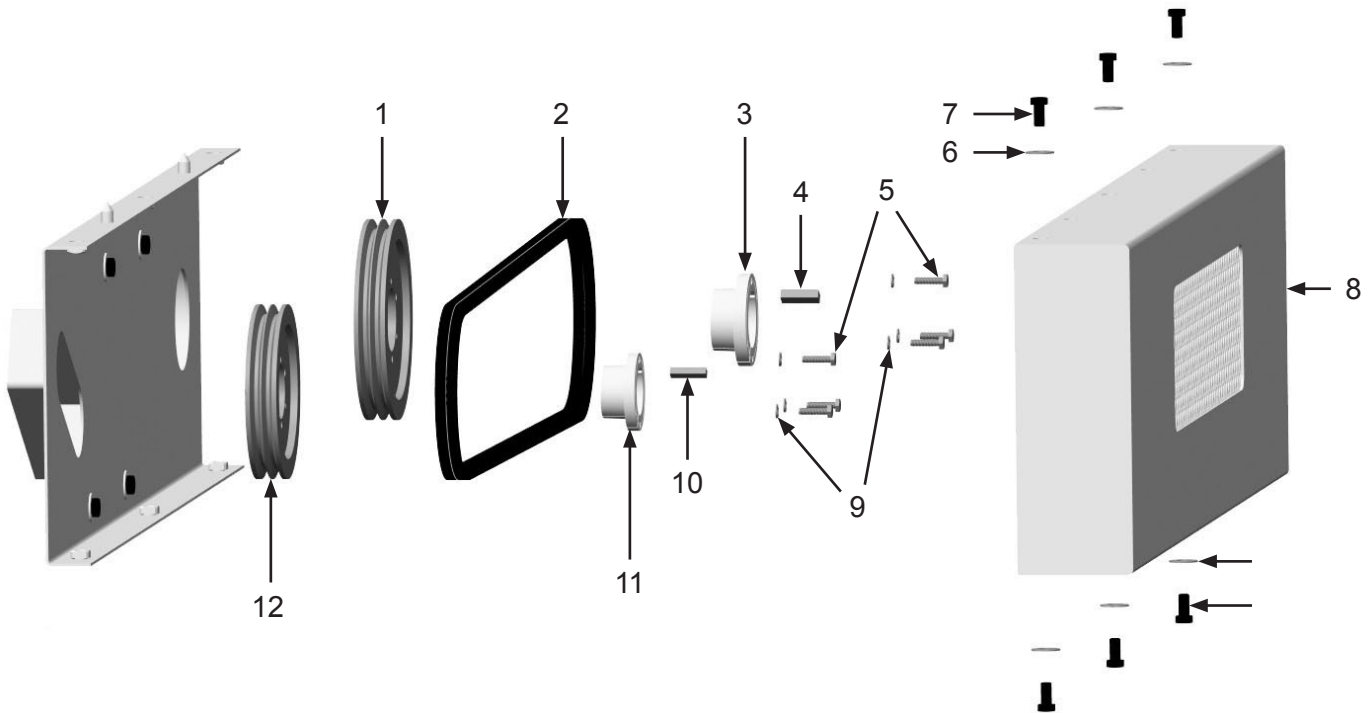
## PART NUMBERS AND SCHEMATICS

Figure 1: Front Assembly



## PART NUMBERS AND SCHEMATICS

Figure 2: Fan Belt Assembly



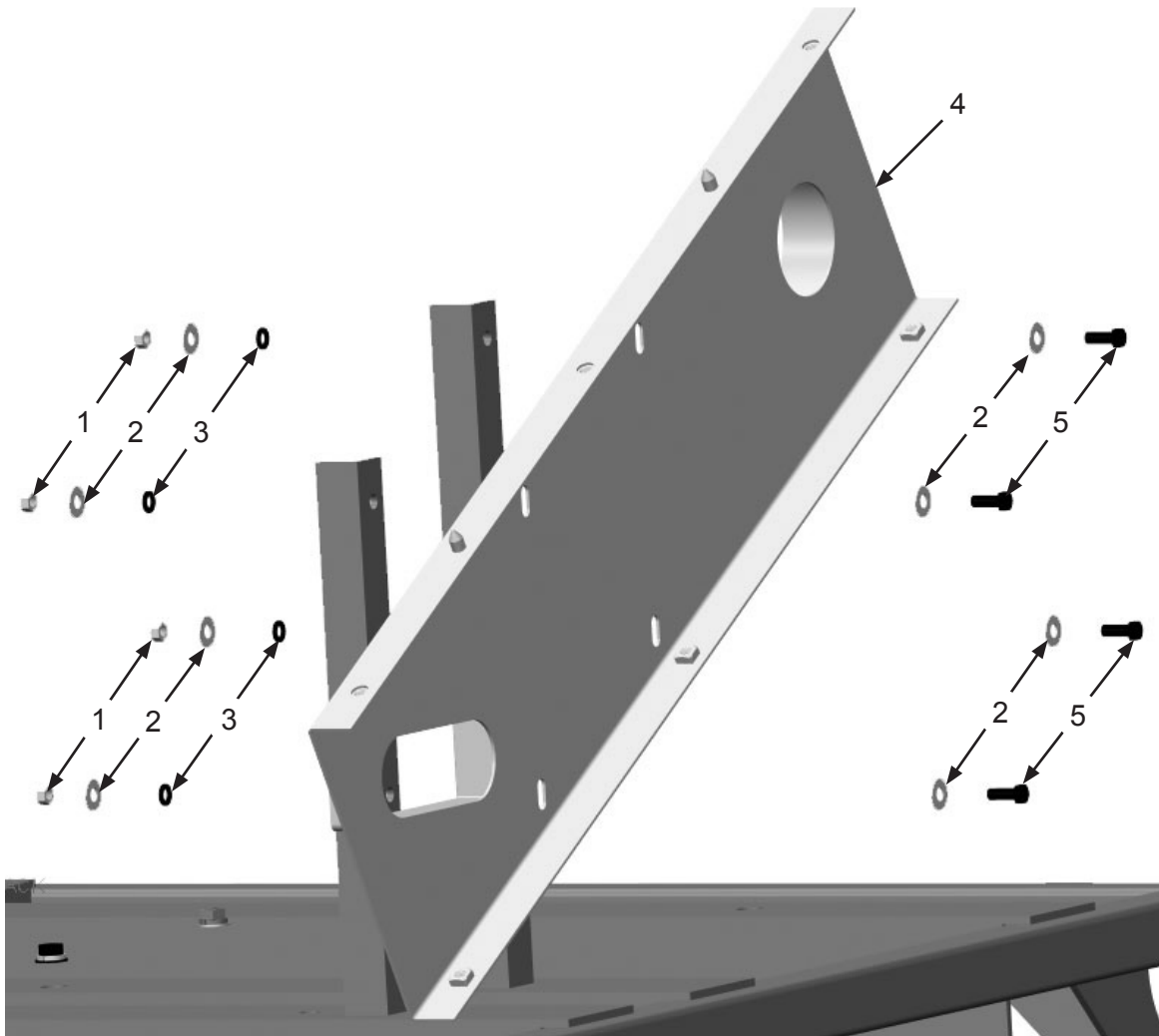
Item #	Part #	Description
--------	--------	-------------

**Fig. 2**

1	10104329	2/3 Sheave 6.9"
2	10104326	2/3 750 Banded Belt
3	10104330	Bushing 1-15/16" Bore <i>Includes Item #'s: 5 and 9 (Three Each)</i>
4	10104362	1/2" x 5/16" Key Cut
5	10101937	1/4-20 x 1" L Grade 5 Bolt <i>(Six Required)</i>
6	10101942	3/8" Flat Washer <i>(Six Required)</i>
7	10103400	3/8-16 x 3/4" Bolt <i>(Six Required)</i>
8	10104320	Belt Guard Cover for Marco® 8,000 CFM Electric Dust Collector
9	1012153	1/4 Lock Washer <i>(Six Required)</i>
10	10104361	3/8" x 1/4" Key Cut
11	10104328	Bushing 1-5/8" Bore <i>Includes Item #'s: 5 and 9 (Three Each)</i>
12	10104327	2/3 Sheave 6.00"

## PART NUMBERS AND SCHEMATICS

Figure 3: Fan Belt Guard Back Assembly



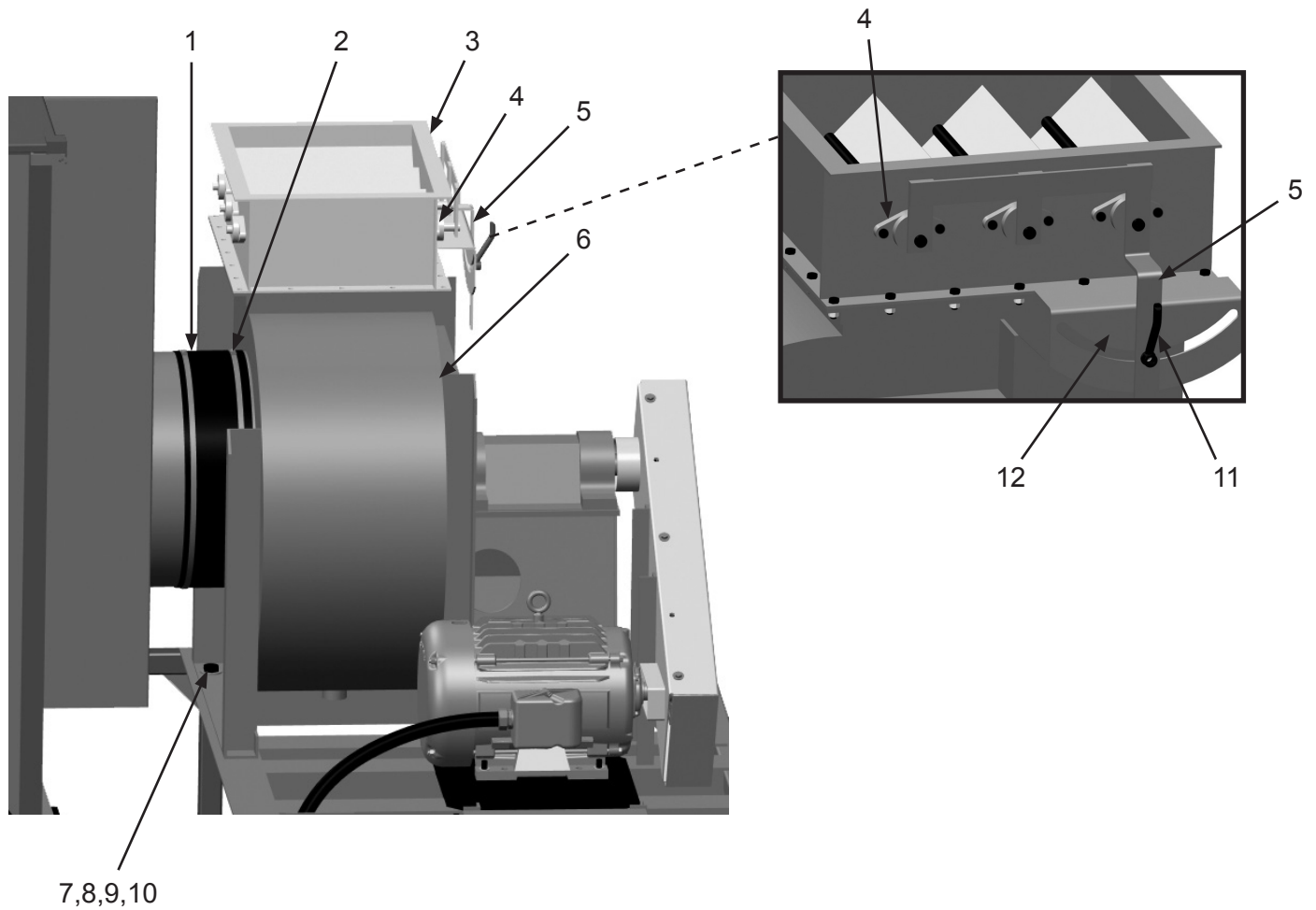
Item #	Part #	Description
--------	--------	-------------

**Fig. 3**

1	10101938	3/8-16 Galvanized Hex Nut ( <i>Four Required</i> )
2	10101942	3/8" Galvanized Flat Washer ( <i>Four Required</i> )
3	10101936	3/8" Zinc Lock Washer ( <i>Four Required</i> )
4	10104317	Belt Guard Back
5	1011747	3/8-16 x 1" Bolt ( <i>Four Required</i> )

## PART NUMBERS AND SCHEMATICS

Figure 4: Fan Assembly



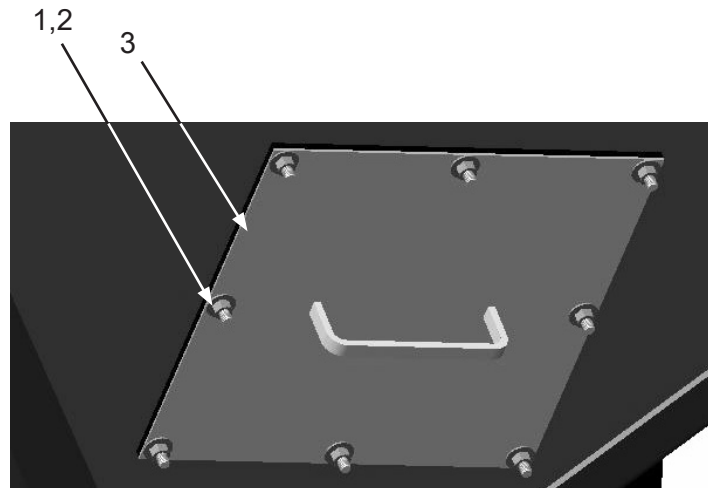
Item #	Part #	Description
--------	--------	-------------

**Fig. 4**

1	10103962	Connection Rubber Gasket
2	10103416	Adjustable Clamp Fastener <i>(Two Required)</i>
3	10104332	Fan Damper
4	10105775	Damper Bearing <i>(Six Required)</i>
5	10105774	Damper Handle
6	10104331	BI-200 Fan
7	10103417	3/4-10 UNC x 1-3/4" Grade 8 Bolt <i>(Six Required)</i>
8	10103418	3/4" Washer <i>(12 Required)</i>
9	10103420	3/4-10 UNC Grade 8 Nut <i>(Six Required)</i>
10	10103419	3/4" Lock Washer <i>(Six Required)</i>
11	10103395	Handle 1/2-13 Zinc Plated
12	1091140	Hazard Identification Decal
—	10105776	Damper Hardware Kit <i>(Includes: 1/2 x 1-3/4 Bolt, 1/2" Star Washer, 1/2" Flat Washer, 1/2" Lock Washer)</i>

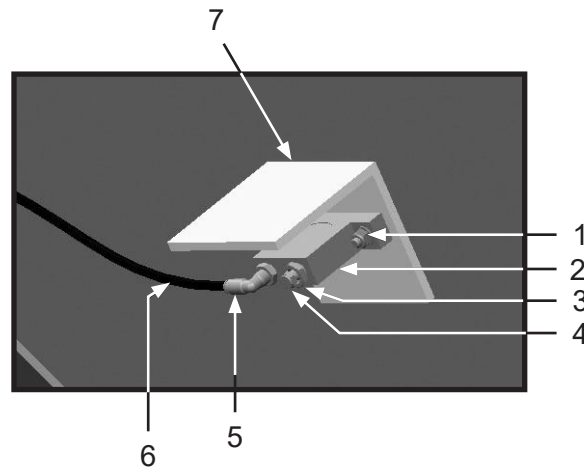
## PART NUMBERS AND SCHEMATICS

**Figure 5: Access Panel Assembly**



Item #	Part #	Description
<b>Fig. 5</b>		
1	10101938	3/8-16 Galvanized Hex Nut ( <i>Eight Required</i> )
2	10101942	3/8" Flat Washer ( <i>Eight Required</i> )
3	10103792	Access Panel Door

**Figure 6: Pneumatic Ball Vibrators**



Item #	Part #	Description
<b>Fig. 6</b>		
1	10101939	1/4-20 Stainless Steel Lock Nut with Nylon Insert ( <i>Two Required</i> )
2	10103258	Pneumatic Ball Vibrator
3	20PFHA24SB0402	1/4" x 1/8" Reducing Bushing
4	1012905	1/8" Breather Muffler
5	20PFBA31095614	1/4" Tube x 1/4" NPT 90° Fitting
6	10103322	1/4" I.D. Black Urethane Tubing ( <i>Per Foot</i> )
7	10103609	Vibrator Shield



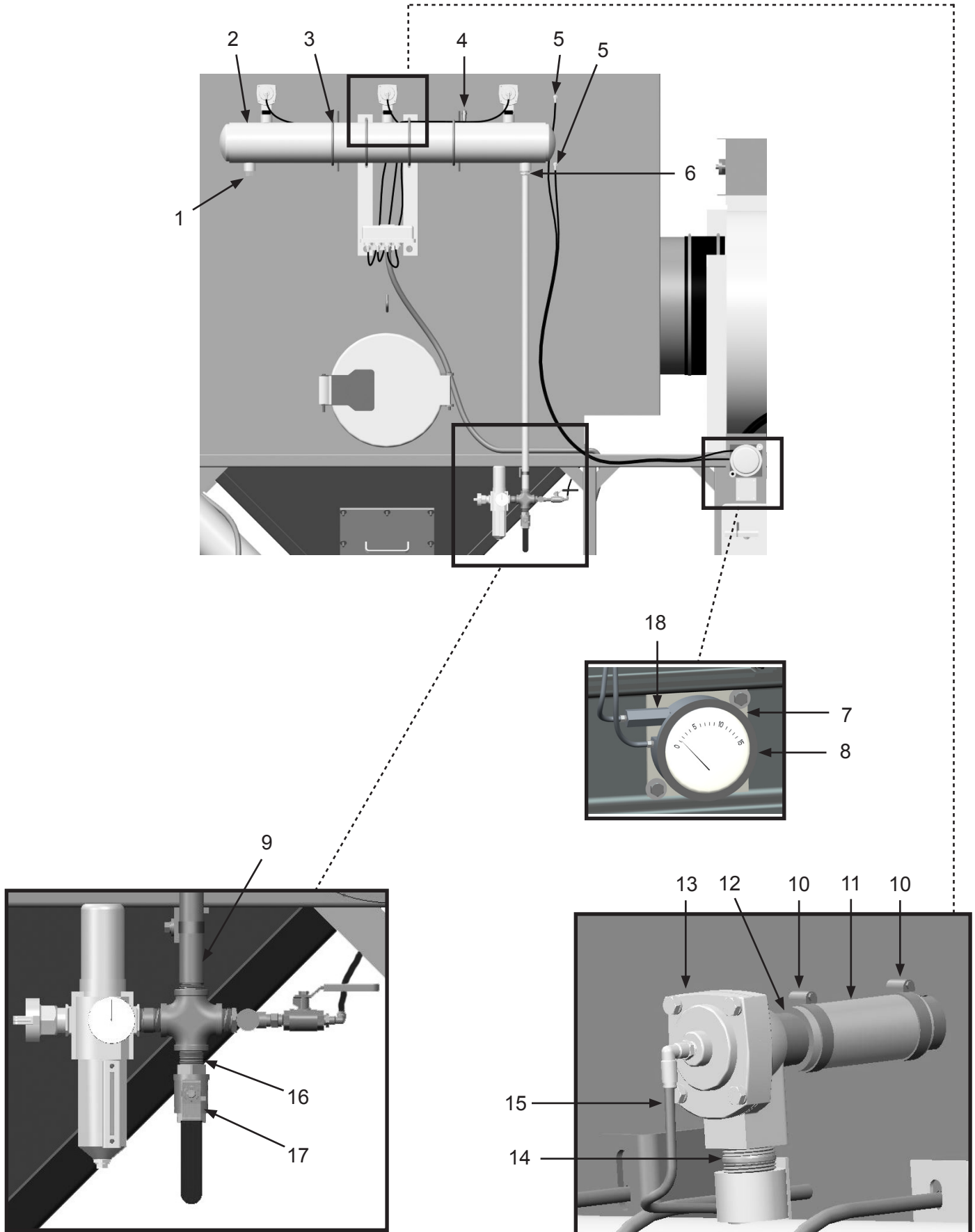
## PART NUMBERS AND SCHEMATICS

### Pulser System Assembly

Item #	Part #	Description
<b>Fig. 7</b>		
1	1011901	1" Galvanized Square Head Plug
2	10103789	3 Pipe Header Tube
3	10103394	3/8-16 x 6" U-Bolt Assembly <i>(Four Required)</i>
4	1028607	1/4" NPT Pressure Relief Valve – 125 PSI
5	20PFBA31095614	1/4" Tube x 1/4" NPT 90° Fitting <i>(Two Required)</i>
6	20PFHA24SB1612	1" x 3/4" Reducing Bushing
7	10103608	Magnehelic Differential Pressure Gauge Mounting Bracket
8	10103259	Magnehelic Differential Pressure Gauge Assembly <i>Includes Mounting Hardware</i>
9	10105197	3/4" x 48" Pipe Nipple
10	10104136	T-Bolt Clamp for 1-9/16" to 1-11/16" O.D. Hose <i>(Six Required)</i>
11	10103654	1-1/4" I.D. Marine Hose – 100 PSI <i>(Per Foot)</i>
12	10105207	1" x 3" Toe Nipple <i>(Three Required)</i>
13	10103255	1" Diaphragm Valve <i>(Three Required)</i>
14	10103318	1" x 2" Pipe Nipple <i>(Three Required)</i>
15	10103322	1/4" O.D. Black Urethane Tubing <i>(Per Foot)</i>
16	1011213	3/4" NPT Close Nipple - Galvanized
17	10L8074C	3/4" Full Port Ball Valve
18	10108373	1/8" NPT INline Air Filter
—	10103954	1" Diaphragm Valve Service Kit <i>(Not Shown)</i>

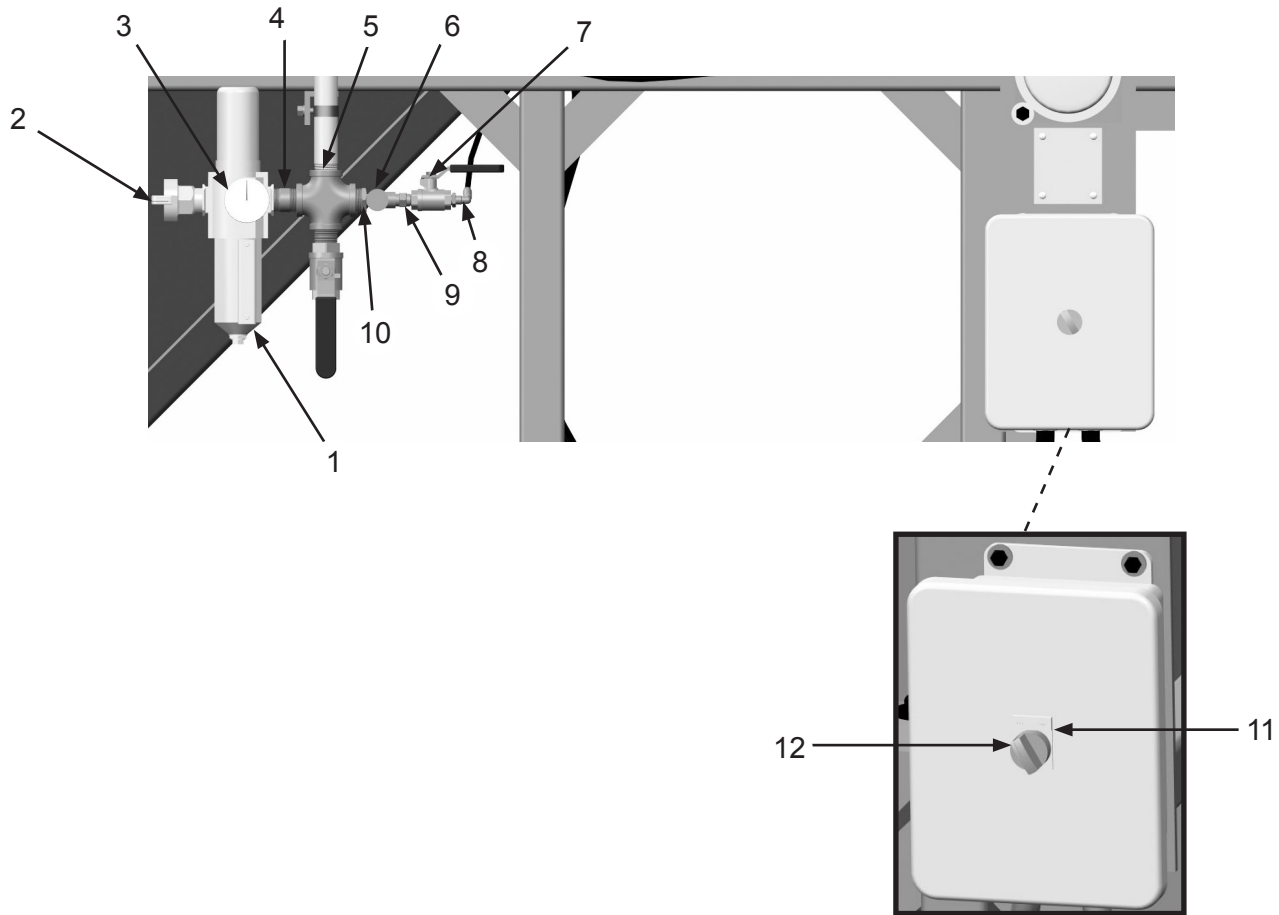
## PART NUMBERS AND SCHEMATICS

Figure 7: Pulser System Assembly



## PART NUMBERS AND SCHEMATICS

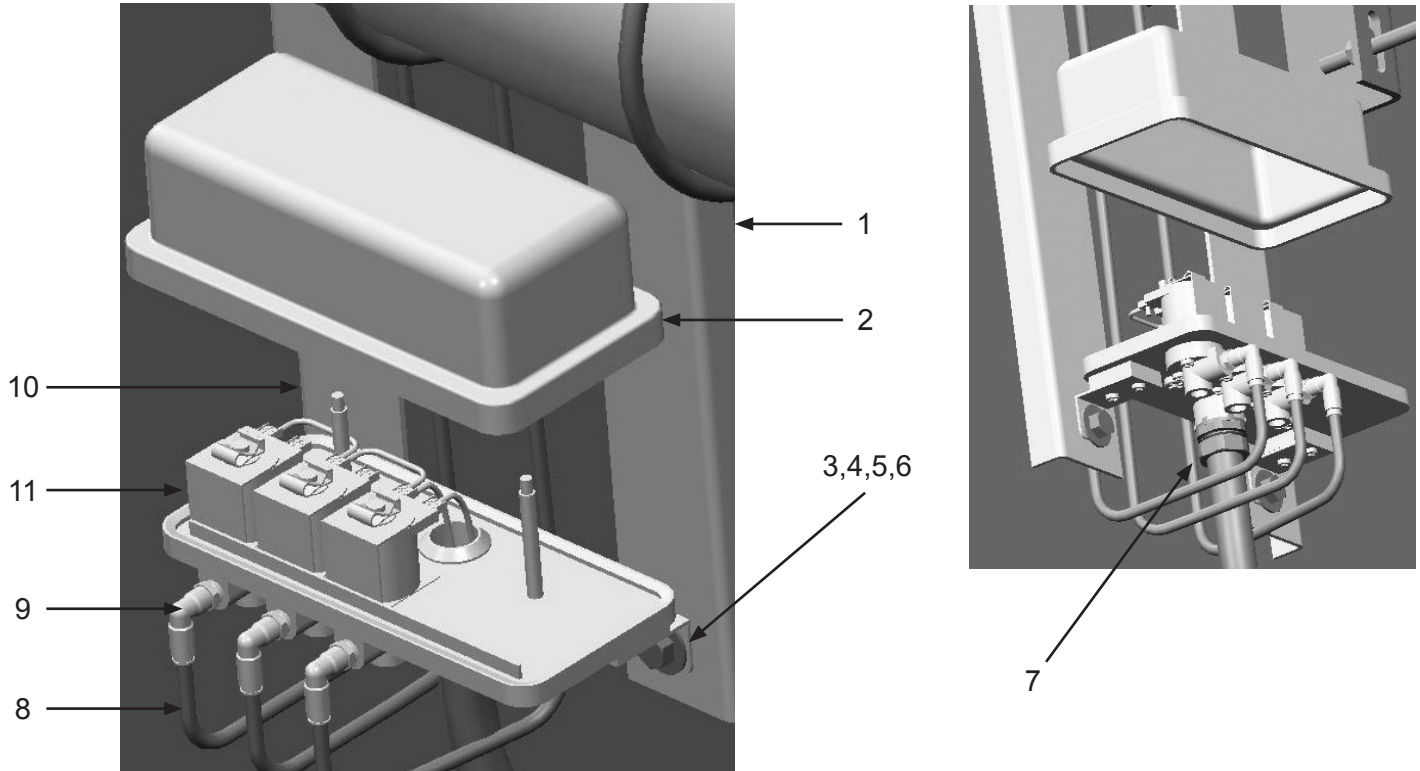
**Figure 8: Pulser Regulator and Timer Assembly**



Item #	Part #	Description
<b>Fig. 8</b>		
1	10103257	Filter/Regulator
2	10ME1	3/4" Male 2-Lug Coupling
3	1028606	Pressure Gauge 160 PSI 1/4" Back
4	10103317	3/4" x 2" Pipe Nipple
5	10105198	3/4" NPT Galvanized Cross
6	10103292	1/4" Needle Valve
7	1080050	1/4" Ball Valve
8	20PFBA31095614	1/4" Tube x 1/4" NPT 90° Fitting
9	1017019	1/4" x 1/4" Hex Nipple
10	20PFHA24SB1204	3/4" x 1/4" Reducing Bushing
11	10103414	On/Off Name Plate
12	10103305	2-Way Selector Switch
—	10103950	Filter/Regulator Service Kit
—	10103951	Filter Element ( <i>Not Shown</i> )

## PART NUMBERS AND SCHEMATICS

Figure 9: Pulser Solenoid Enclosure Assembly



Item #	Part #	Description
--------	--------	-------------

**Fig. 9**

1	10102970	Solenoid Enclosure Mount – Right
2	10103849	Solenoid Pilot Valve Enclosure
3	10101936	3/8" Zinc Lock Washer ( <i>Two Required</i> )
4	10101938	3/8-16 Galvanized Hex Nut ( <i>Two Required</i> )
5	10101942	3/8" Galvanized Flat Washer ( <i>Four Required</i> )
6	1011747	3/8-16 x 1" Bolt ( <i>Two Required</i> )
7	20RST50	Straight Liquid Tite Connection Fitting
8	10103322	1/4" O.D. Black Urethane Tubing ( <i>Per Foot</i> )
9	20100579	1/4" O.D. Tube x 1/8" NPT Swivel ( <i>Three Required</i> )
10	10102969	Solenoid Enclosure Mount – Left
11	10103955	Solenoid Valve ( <i>Three Required</i> )
—	10103956	Solenoid Coil ( <i>One Required per Solenoid</i> )
—	10103957	Solenoid Service Kit (Includes: O-ring, Plunger, Spring, Ferrule)

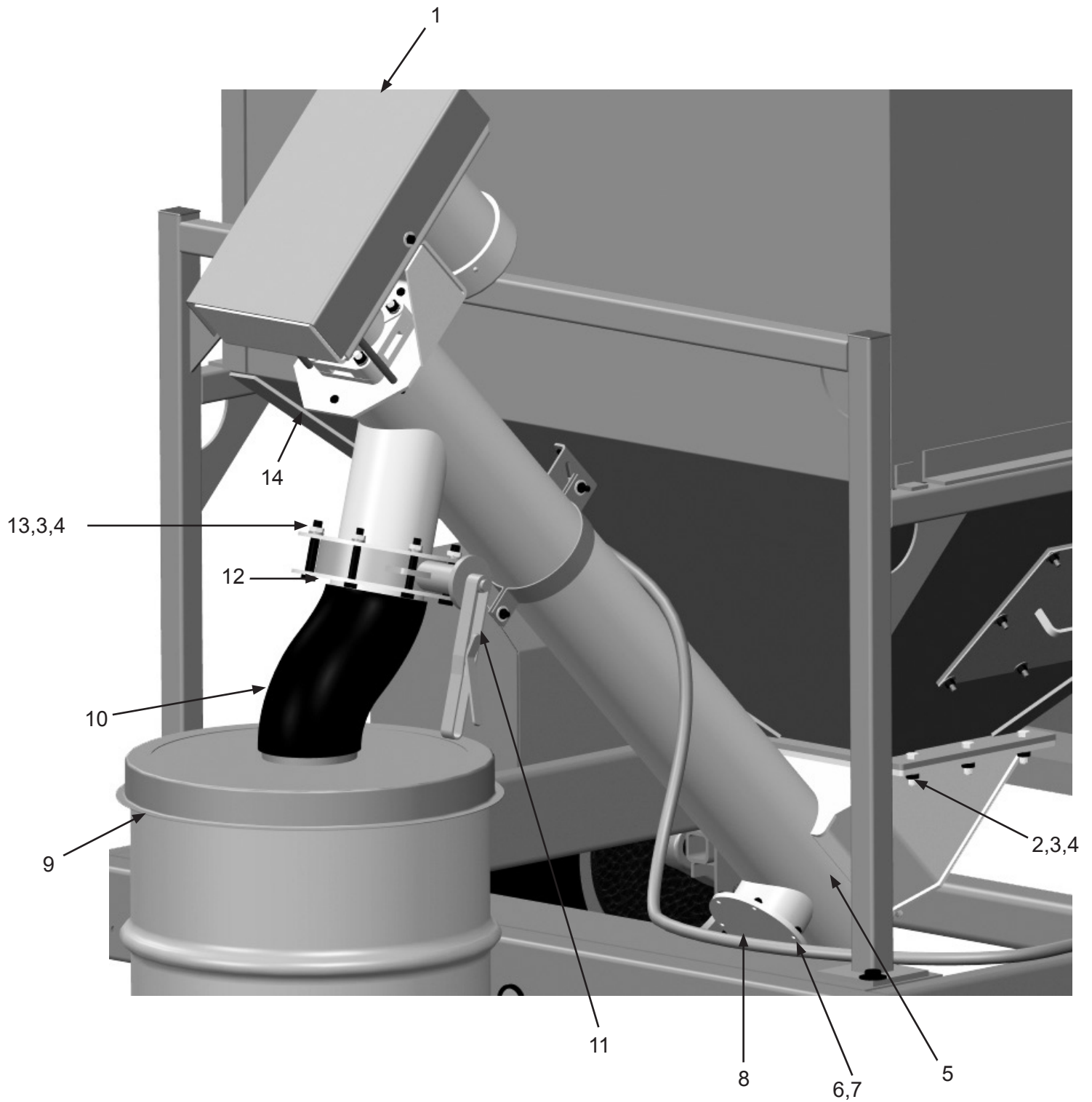
## PART NUMBERS AND SCHEMATICS

### Discharge Auger Assembly

Item #	Part #	Description
<b>Fig. 10</b>		
1	10104287	Discharge Chain Cover
2	10100674	1/2" Flat Washer ( <i>22 Required</i> )
3	10100675	1/2" Lock Washer ( <i>14 Required</i> )
4	1014022	1/2-13 Hex Nut ( <i>14 Required</i> )
5	10104277	Discharge Auger Tube
6	10101346	5/16-18 x 3/4" Grade 5 Bolt ( <i>Six Required</i> )
7	1035046	5/16-18 Nut ( <i>Six Required</i> )
8	10103235	Auger Clean-out Cover
9	10103650	Discharge Collection Drum Cover ( <i>Optional</i> )
10	10103777	6" Flexible Discharge Hose ( <i>Per Foot</i> ) ( <i>Optional</i> )
11	10103302	6" Series Wafer Butterfly Valve
12	10102971	Auger Discharge Drop Flange
13	10102703	1/2-13 x 3-1/2" Grade 5 Bolt ( <i>Eight Required</i> )
14	10104195	Discharge Auger Motor Mounting Bracket
—	10103880	White Conspicuity Tape ( <i>Per Inch</i> )
—	10103881	Red Conspicuity Tape ( <i>Per Inch</i> )

## PART NUMBERS AND SCHEMATICS

Figure 10: Discharge Auger Assembly



## PART NUMBERS AND SCHEMATICS

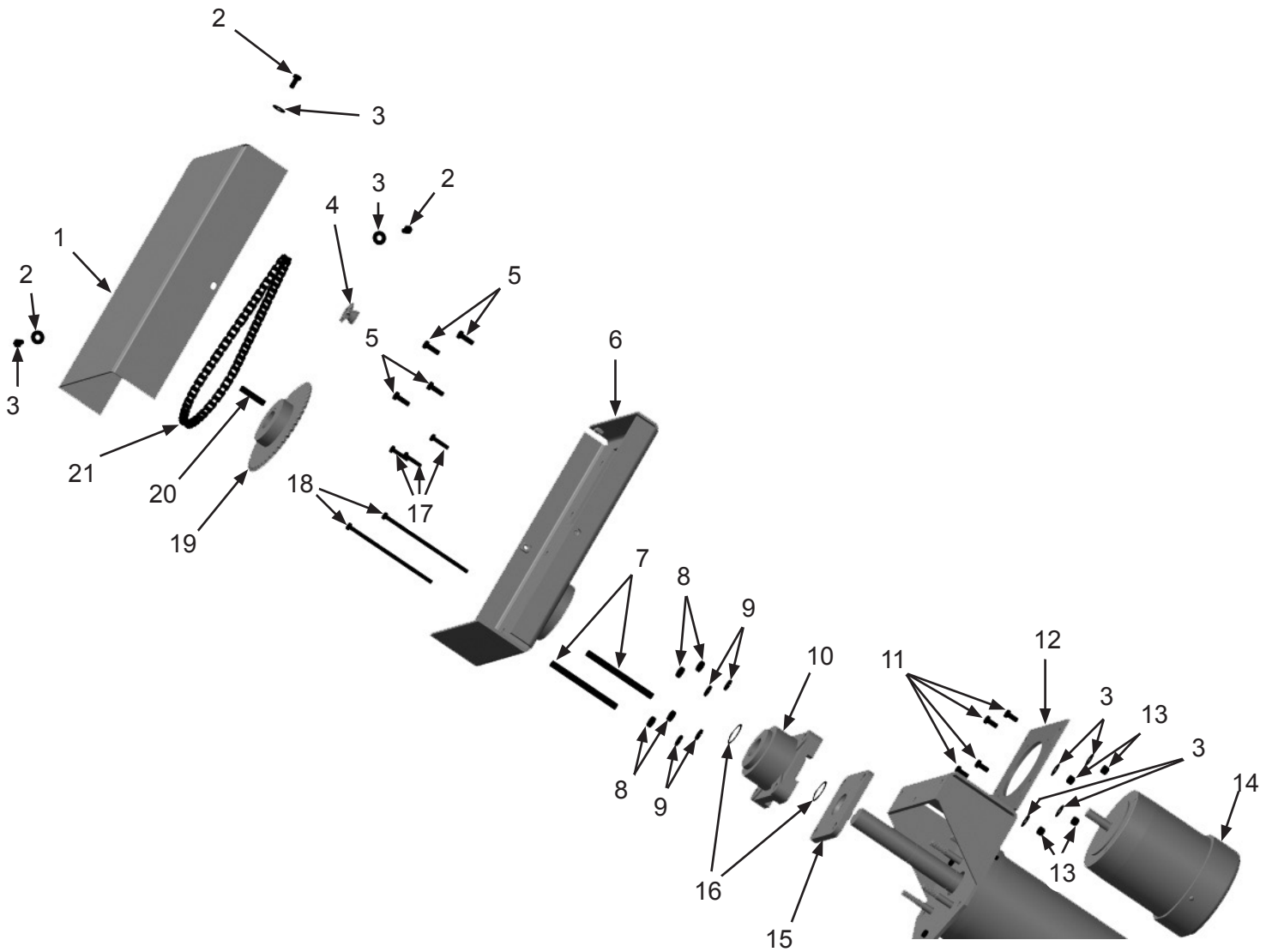
### Discharge Auger Drive Assembly

Item #	Part #	Description
<b>Fig. 11</b>		
1	10104287	Chain Cover
2	10103400	3/8-16 x 3/4" Bolt ( <i>Three Required</i> )
3	1014241	3/8" Flat Washer ( <i>Seven Required</i> )
4	10104288	9T #40 Sprocket - 5/8" Bore (Includes Hardware)
5	1011747	3/8-16 x 1" Bolt ( <i>Four Required</i> )
6	10104284	8K Chain Cover Base Weldment
7	10104206	Motor Mount Spacer ( <i>Two Required</i> )
8	1014022	1/2-13 Hex Nut ( <i>Four Required</i> )
9	10100675	1/2" Lock Washer ( <i>Four Required</i> )
10	10102903	Thrust Bearing
11	10103400	3/8-16 x 3/4" Bolt ( <i>Four Required</i> )
12	10104286	Sliding Motor Mount
13	20100138	3/8-16 Hex Lock Nut Zinc ( <i>Four Required</i> )
14	10104290	3/4 Hp Electric Motor
15	10102902	Seal Plate
16	10103605	Snap Ring For 1.5" Shaft ( <i>Two Required</i> )
17	1014019	5/16-18 x 1-1/4" Hex Bolt ( <i>Three Required</i> )
18	10104201	5/16-18 x 7" Bolt Zinc ( <i>Two Required</i> )
19	10104289	45T #40 Sprocket - 1-1/2" Bore (Includes Hardware)
20	10103641	3/8 Key Cut
21	10104344	#40 Chain



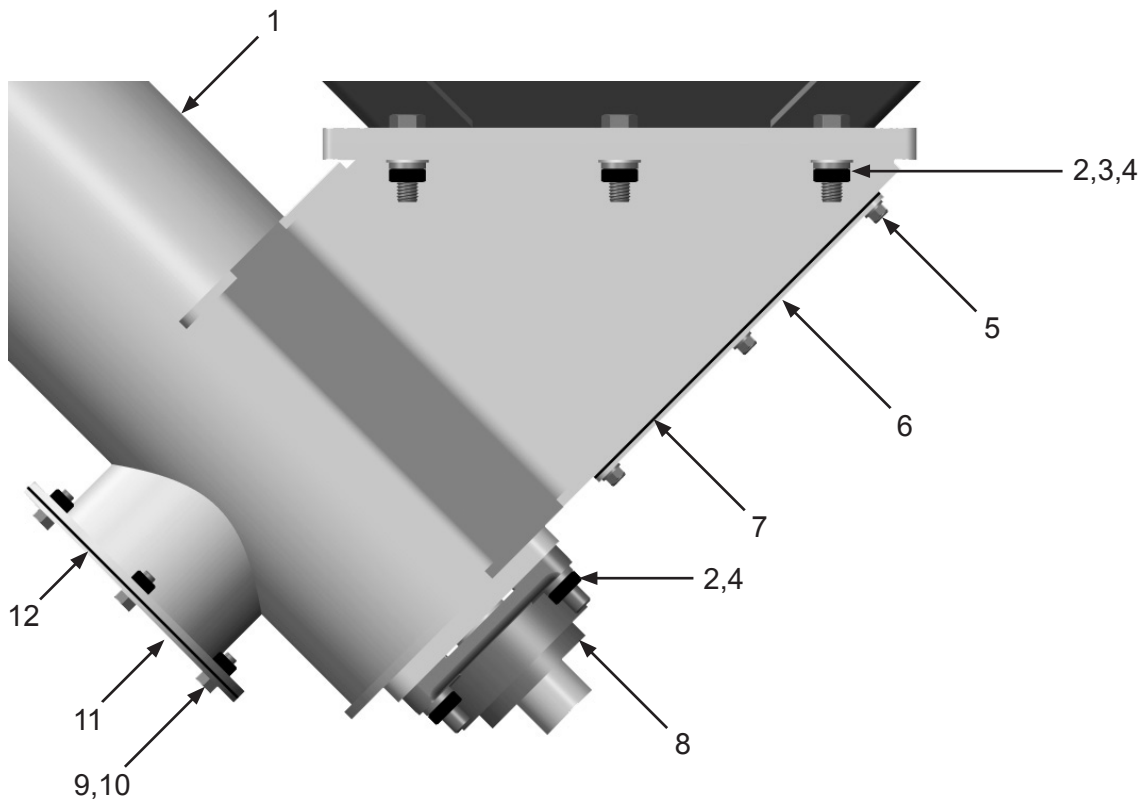
## PART NUMBERS AND SCHEMATICS

Figure 11: Discharge Auger Drive Assembly



## PART NUMBERS AND SCHEMATICS

Figure 12: Discharge Auger Clean-out Assembly



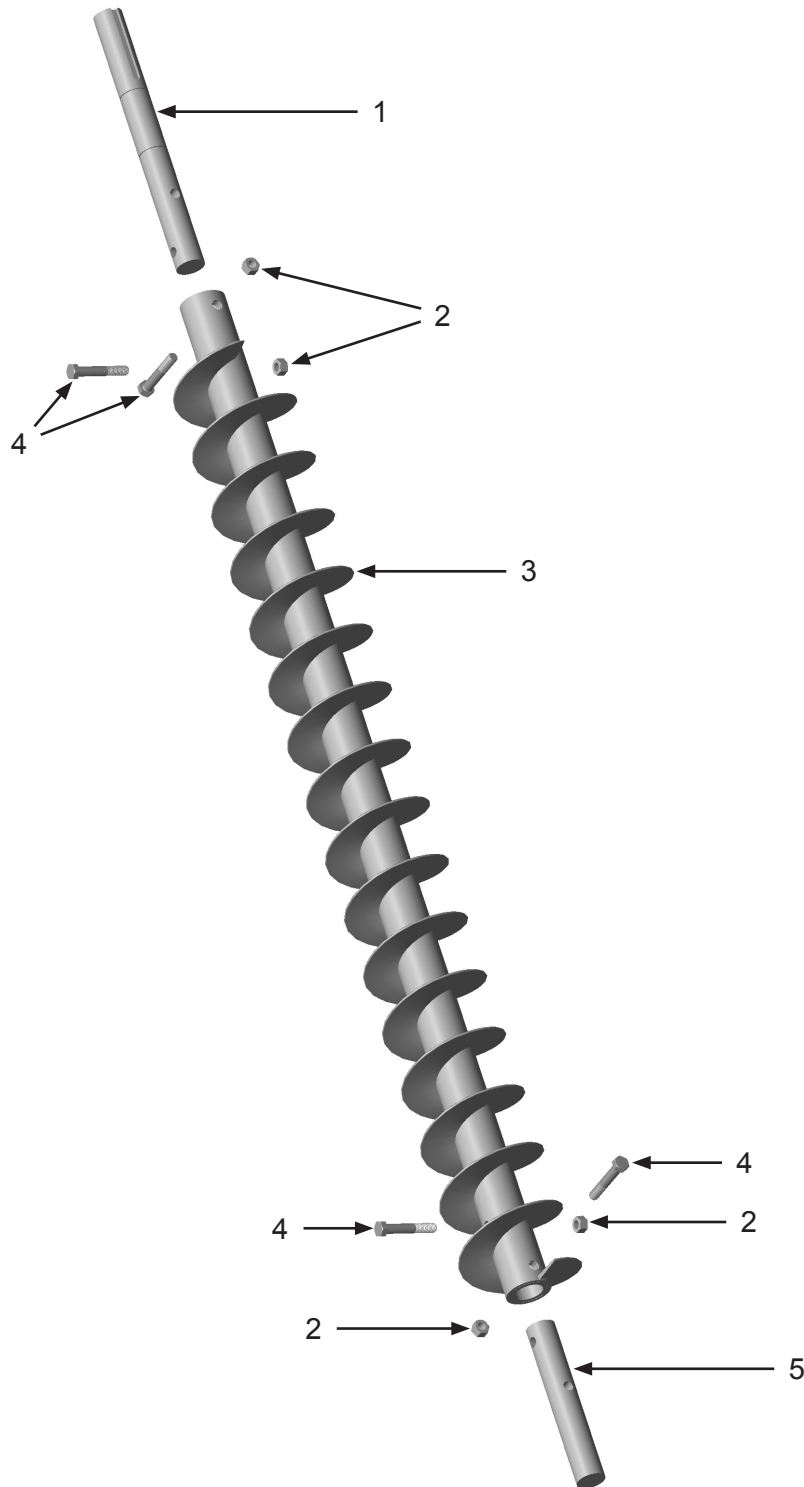
Item #	Part #	Description
--------	--------	-------------

**Fig. 12**

1	10104276	Discharge Auger Weldment
2	10100675	1/2" Lock Washer ( <i>10 Required</i> )
3	10100674	1/2" Flat Washer ( <i>Six Required</i> )
4	1014022	1/2-13 Hex Nut ( <i>10 Required</i> )
5	10101939	1/4-20 Stainless Steel Lock Nut with Nylon ( <i>Eight Required</i> )
6	10104283	Clean Out Cover
7	10104336	Clean Out Cover Gasket
8	10102880	Auger Lower Bearing Assy
9	10101346	5/16-18 x 3/4" Grade 5 Bolt ( <i>Six Required</i> )
10	1035046	5/16-18 Nut ( <i>Six Required</i> )
11	10103235	Auger Clean-Out Cover
12	10103716	Auger Clean Out Gasket

## PART NUMBERS AND SCHEMATICS

Figure 13: Discharge Auger Assembly



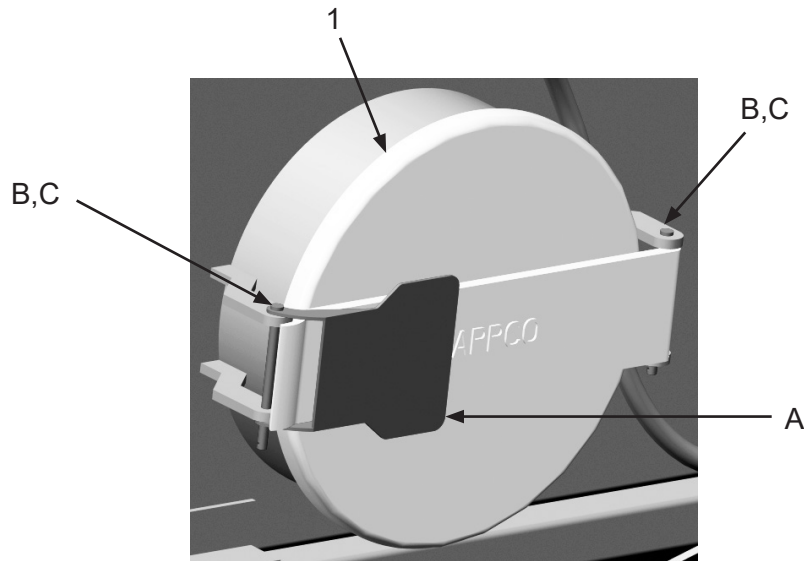
Item #	Part #	Description
--------	--------	-------------

Fig. 13

1	10103306	Drive Shaft
2	1014022	1/2-13 Hex Nut ( <i>Four Required</i> )
3	10102883	58" x 6" Half Pitch Auger
4	10103401	1/2-13 x 3" Galvanized Bolt ( <i>Four Required</i> )
5	10102910	Auger Shaft End

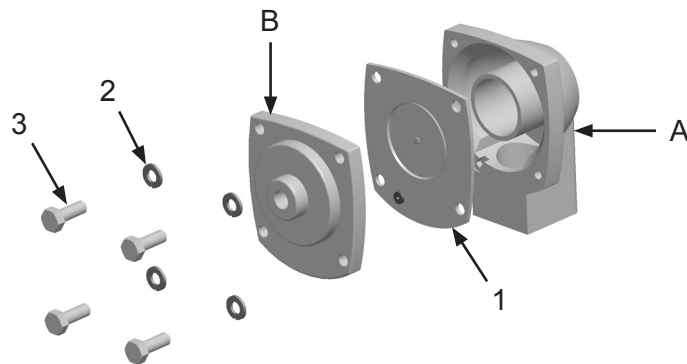
## PART NUMBERS AND SCHEMATICS

**Figure 14: Inlet Door Assembly**



Item #	Part #	Description
<b>Fig. 14</b>		
1	10104179	16" Inlet Door Assembly – Complete <i>(Two Required)</i> <i>Includes Items: A,B,C</i>
—	10105340	Inlet Door Gasket <i>(Two Required)</i>
—	10104408	Pin <i>(Two Required)</i>

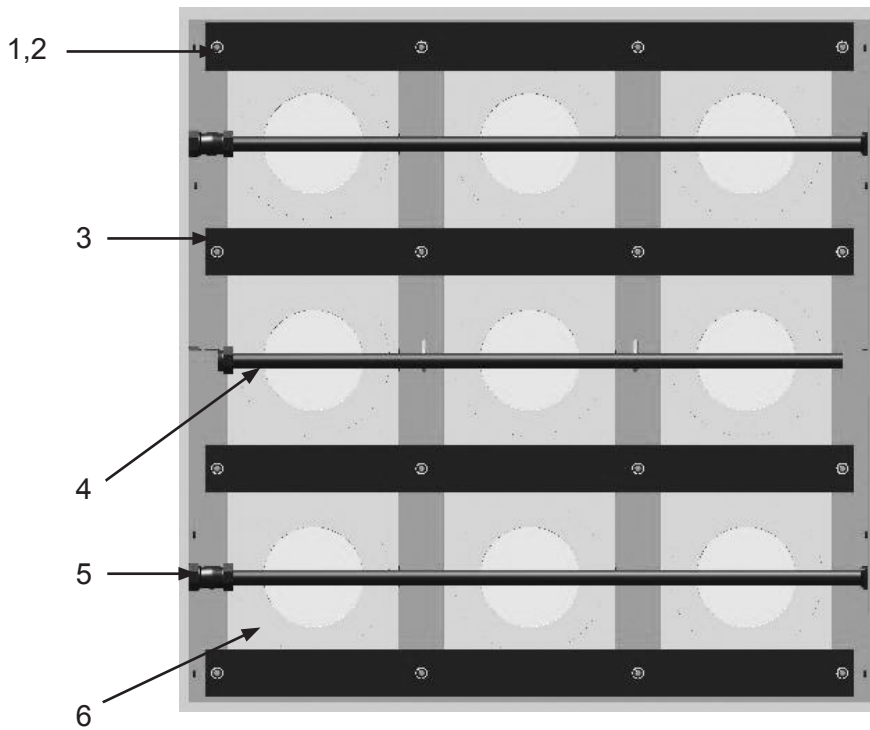
**Figure 15: Diaphragm Valve**



Item #	Part #	Description
<b>Fig. 15</b>		
—	10103255	1" Diaphragm Valve – Complete <i>(Three Required)</i> <i>Includes Items: A,B,1,2,3</i>
1	10103954	1" Diaphragm Valve Service Kit
2	1012153	1/4" Lock Washer <i>(Four Required)</i>
3	20101232	M6 x 1 x 14 HHCS <i>(Four Required)</i>

## PART NUMBERS AND SCHEMATICS

**Figure 16: Dust Collector Filter Cartridge Pulsers And Filters**



Item #	Part #	Description
<b>Fig. 16</b>		
1	10100674	1/2" Flat Washer <i>(16 Required)</i>
2	1014022	1/2" Hex Nut <i>(16 Required)</i>
3	10103823	Filter Bolt-Down <i>(Four Required)</i>
4	10103791	Pulser System Blowpipe <i>(Three Required)</i>
5	10102599	Compression Coupling Assembly <i>(Three Required)</i>
6	10102033	85/15 Blend Filters – 99.8% @ 0.5 micron <i>(Nine Required) (Optional)</i>
	10105561	Reduced Pleat – 99.8% @ 0.5 micron <i>(Nine Required) (Optional)</i>
	1010005946	HEPA Filters – 99.99% @ 0.3 micron <i>(Nine Required) (Optional)</i>
	10105562	Fire Retardant Filters – 96.8% @ 2.0 micron <i>(Nine Required) (Optional)</i>
	10105563	Spunbond Filters – 97% @ 3.0 micron <i>(Nine Required) (Optional)</i>

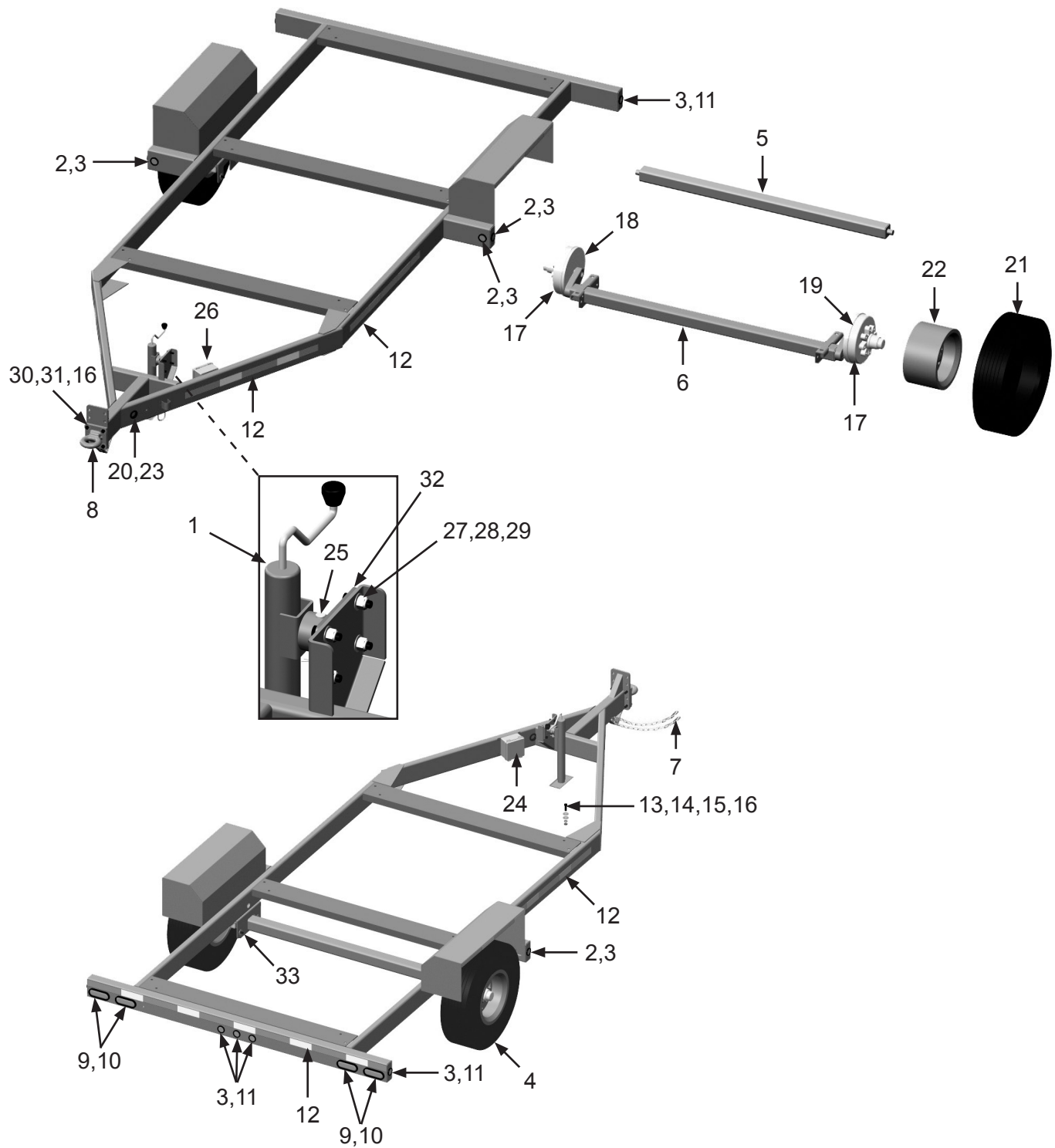
## PART NUMBERS AND SCHEMATICS

### Trailer

Item #	Part #	Description
<b>Fig. 17</b>		
—	<b>10104333</b>	<b>Highway Trailer</b>
1	10104141	7,000 # Heavy Duty Drop Leg Side Mount Top-Wind Jack
2	10104087	2" Round LED Amber Clearance Light <i>(Four Required)</i>
3	10104088	2" Round Rubber Grommet <i>(Nine Required)</i>
4	10104143	215/75R17.5 16-Ply Tire with 17.5" 8-Hole Mod Rim <i>(Two Required)</i>
5	10105905	Axle Beam/Tube No Hubs or Springs
6	10105904	8,000 # Axle With Electric Brakes, Complete With Hubs And Springs 88" HF x 70" OB
7	10104769	3/8" x 41" Safety Chain with Hook
8	10104079	Pintle Hitch with Flat Plate
9	10104085	Oval Rubber Grommet <i>(Four Required)</i>
10	10104084	Oval LED Red Tail Light <i>(Four Required)</i>
11	10104086	2" Round LED Red Clearance Light <i>(Five Required)</i>
12	10103879	2" x 6" x 6" Red/White Conspicuity Tape
13	10103397	5/8-11 x 2" GR8 Bolt - Zinc <i>(12 Required)</i>
14	10103399	5/8" Lock Washer <i>(12 Required)</i>
15	10103393	5/8-11 GR8 Nut <i>(12 Required)</i>
16	10103398	5/8" Flat Washer <i>(28 Required)</i>
17	10105734	Axle Hub Only - No Bearings or Seal <i>(Two Required)</i>
18	10105738	Left-Hand Electric Brake Assembly <i>(Two Required)</i>
19	10105739	Right-Hand Electric Brake Assembly <i>(Two Required)</i>
20	10105825	Electrical Break Away Grommet
21	10105735	Hercules Lt215/75R17.5 16-Ply Tire Only <i>(Four Required)</i>
22	10105736	17.5" 8-Hole Rim - No Tire <i>(Four Required)</i>
23	10105829	Cable With Plug
24	10105826	Redline 12V - 5AH Battery Sealed
25	10104709	1/2" x 3-1/2" Pin
26	10104081	Breakaway Kit
27	10105874	1/2-13 x 1-1/2" Grade 5 Bolt <i>(Four Required)</i>
28	20100124	1/2-13 Nylon Lock Nut <i>(Four Required)</i>
29	10100674	1/2" Flat Washer <i>(Eight Required)</i>
30	10105746	5/8" x 2-1/2" Grade 8 Bolt <i>(Four Required)</i>
31	10105747	5/8" Reverse Lock Nut <i>(Four Required)</i>
32	10105876	Jack Plate with Four Holes
33	10105875	Weld on Mounting Bracket with Hardware - Axle Mount <i>(Four Required)</i> - 9/16-18 x 1-1/2" Grade 5 Hex Bolt <i>(Six Required)</i> - 9/16" Flat Washer <i>(12 Required)</i> - 9/16" Hex Nut <i>(Six Required)</i>
—	10104142	Wire Harness - Complete <i>(Front, Middle &amp; Rear)</i>
—	10105783	Breakaway Switch with LED
—	10105784	Replacement Pin and Cable for 10105783
—	109V582	Operator's Manual - Behnke Trailer

## PART NUMBERS AND SCHEMATICS

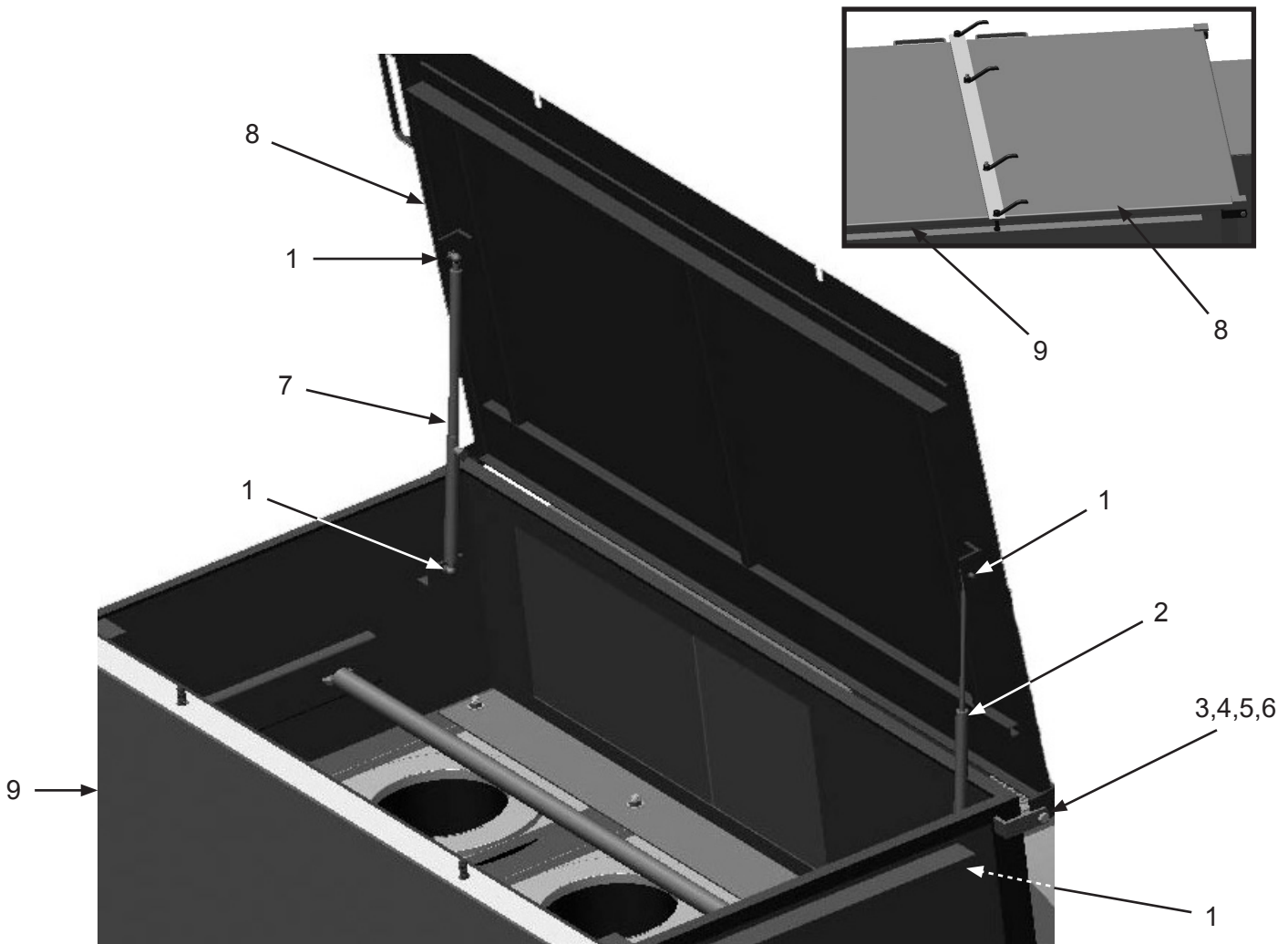
Figure 17: Trailer





## PART NUMBERS AND SCHEMATICS

Figure 18: Dust Collector Filter Cartridge Hatch Door



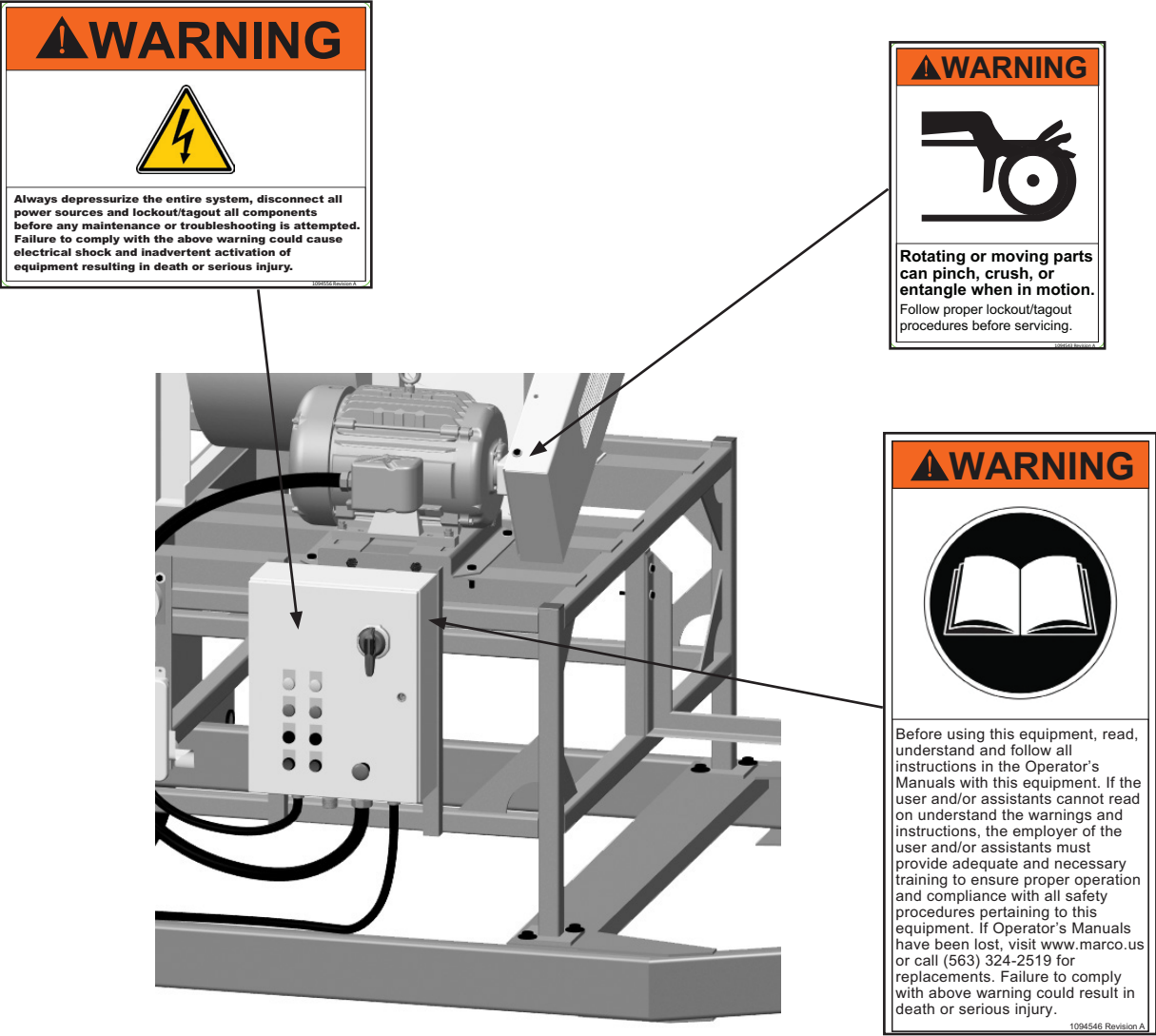
Item #	Part #	Description
--------	--------	-------------

Fig. 18

1	1035046	5/16-18 Hex Nut ( <i>Four Required</i> )
2	10103454	Non-Locking Gas Spring
3	10101059	3/8-16 X 1-1/4" A307 Bolt - Galvanized ( <i>Two Required</i> )
4	10101942	3/8" Flat Washer ( <i>Four Required</i> )
5	10101936	3/8" Lock Washer - Zinc ( <i>Two Required</i> )
6	10101938	3/8-16 Hex Nut ( <i>Two Required</i> )
7	10103455	Locking Gas Spring
8	10103802	Front Hatch Door
9	10103798	Rear Hatch Door

*Quantities specified are per hatch opening*

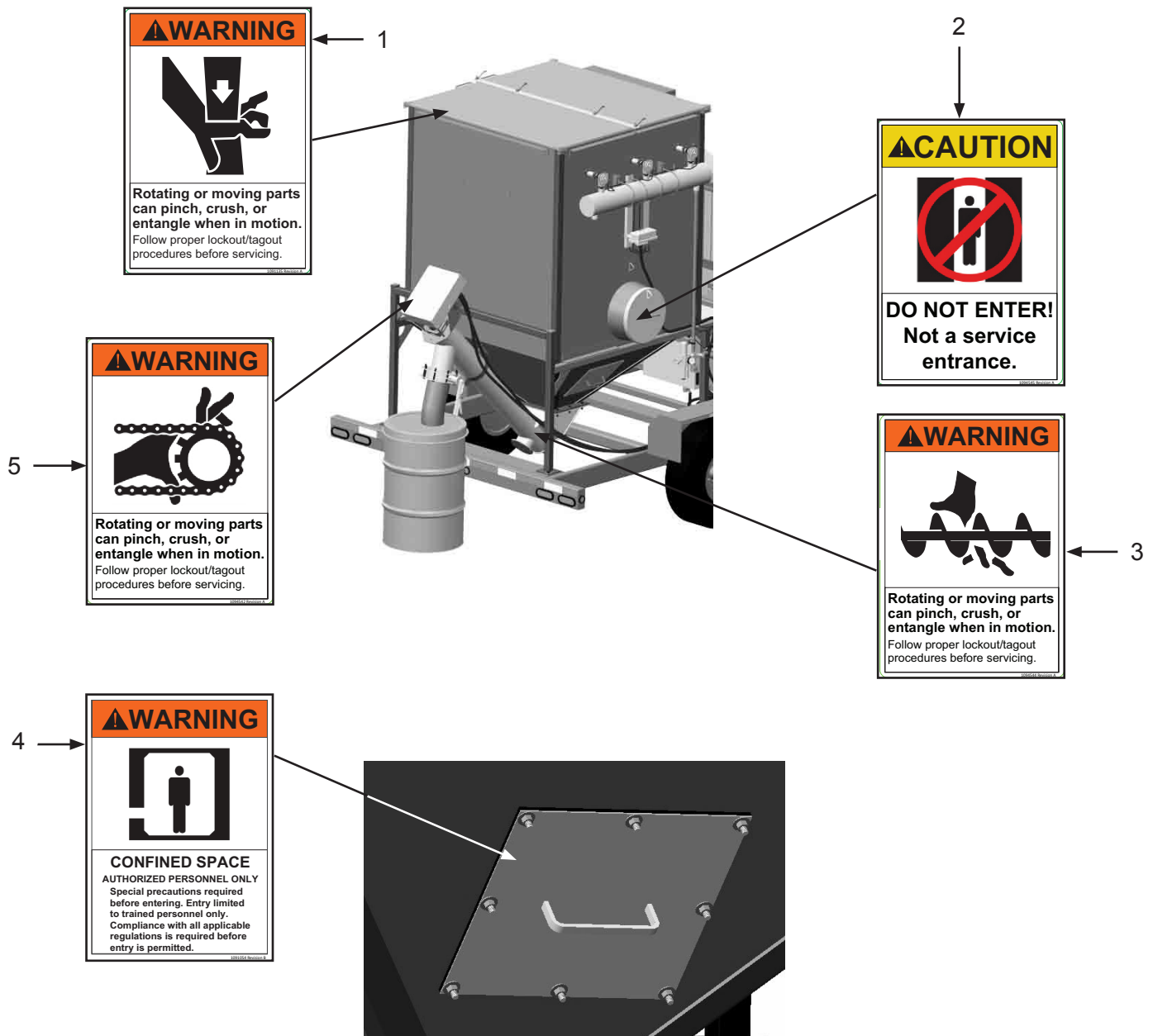
Figure 19: Hazard Identification Decals



Item #	Part #	Description
<b>Fig. 19</b>		
1	1094556	Lockout/Tagout Warning Decal
2	1094543	Rotating or Moving Parts Warning Decal
3	1094546	Read Manual Warning Decal

## PART NUMBERS AND SCHEMATICS

Figure 20: Hazard Identification Decals (Cont.)



Item #	Part #	Description
--------	--------	-------------

Fig. 20


1	1091135	Rotating or Moving Parts Warning Decal
2	1094545	Do Not Enter Caution Decal
3	1094544	Rotating or Moving Parts Warning Decal
4	1091054	Confined Space Warning Decal
5	1094542	Rotating or Moving Parts Warning Decal



## LITERATURE REFERENCES


### Marco® 8,000 CFM Electric Dust Collector



106M129	Part Numbers & Schematics Guide – Marco® 8,000 CFM Electric Dust Collectors
1090129	Operator's Manual – Marco® 8,000 CFM Electric Dust Collectors
109V561	Operator's Manual – Marathon Motor Manual 5554E
109V045	Operator's Manual – Dynamic Fan Corporation
109V562	Operator's Manual - Behnke Trailer

## OPTIONAL ACCESSORIES

		16" I.D. DUCT HOSE					
		Length	Pitch	Bend Radius	Body Material	Wear Strip Material	Wear Strip Color
	<b>10DH1625HD</b>	25 Ft.	1-1/2"	14"	2-Ply Vinyl-Coated Polyester	PVC	Red
	<b>10DH1650HD</b>	50 Ft.	1-1/2"	14"	2-Ply Vinyl-Coated Polyester	PVC	Red
	<b>15DH1625</b>	25 Ft.	2"	16.8"	2-Ply Vinyl-Coated Polyester	PVC	Red

		16" I.D. DUCT HOSE COUPLING AND SCREW CLAMP	
		Style	Hose I.D.
	<b>1017116</b>	Stainless Steel Coupling	16"
	<b>10DH202201600</b>	Stainless Steel Screw Clamp	16"

		DUCT HOSE ADAPTERS	
		Dimensions	Material
	<b>15DH73795060</b>	24" x 16"	Carbon Steel

		DISCHARGE COLLECTION ACCESSORIES	
		Description	
	<b>10103650</b>	Discharge Collection Drum Cover	
	<b>10103777</b>	6" Flexible Discharge Hose ( <i>Per Foot</i> )	

## OPTIONAL ACCESSORIES



### Part Numbers

#### 3/4" I.D. X 1-1/4" O.D. AIR HOSE WITH COUPLINGS INSTALLED

	Length	Hose I.D.	Hose O.D.	Working Pressure	Hose Cover Color	Couplings
10AH034AC	50 Ft.	3/4"	1-1/4"	200 PSI	Red	2-Lug Crimped On



### Part Numbers

#### 3/4" I.D. X 1-1/4" O.D. AIR HOSE

	Length	Hose I.D.	Hose O.D.	Working Pressure	Hose Cover Color
10AH034	Per Ft.	3/4"	1-1/4"	200 PSI	Red



### Part Numbers

#### MALE HOSE END COUPLING AND GASKET FOR 3/4" I.D. AIR HOSE

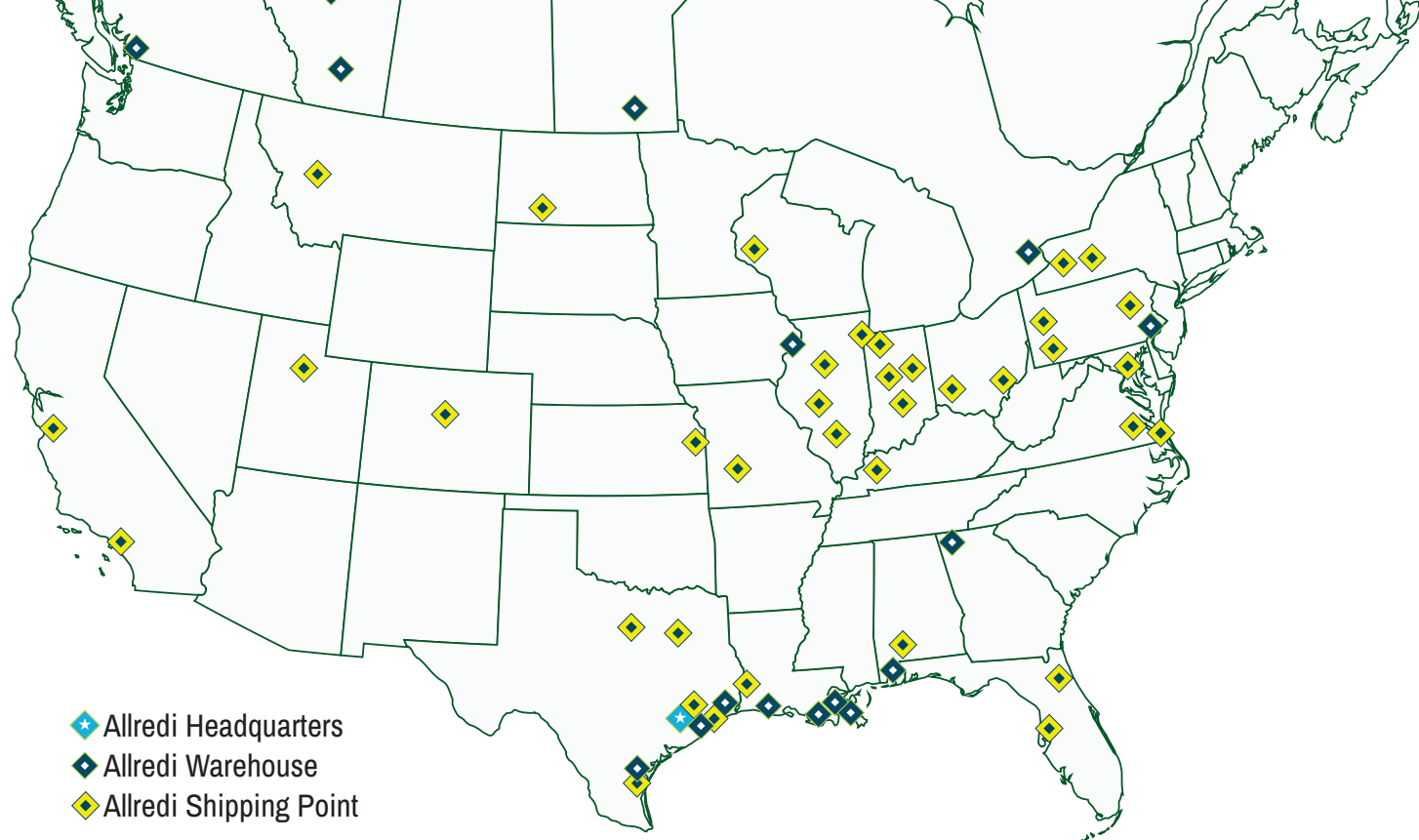
	Hose I.D.	Material	Coupling Style	GASKET		
				Rubber Gasket	Gasket I.D.	Gasket O.D.
10HE1	3/4"	Plated Iron	2-Lug	10UG2	3/4"	1-3/8"



### Part Numbers

#### BOSS® CLAMP FOR 3/4" I.D. AIR HOSE

	Hose I.D.	Hose O.D. Range	Material
10A9	3/4"	1-8/64" – 1-20/64"	Plated Steel



## ALLREDI THERE

Serving these industries: Bridge, Pipeline, Tank & Tower, Concrete Services, Rail, Shipyard & Marine, Pools & Fountains, and Foundry

### UNITED STATES

**Pasadena, TX (Headquarters)**  
844.361.7038

**Beaumont, TX**  
409.722.1284

**Bristol, PA**  
215.826.8080

**Corpus Christi, TX**  
361.887.2038

**Davenport, IA**  
563.324.2519

**Deer Park, TX**  
(Service & Rental Location)  
281.930.0905

**Duluth, GA**  
800.535.4564

**Gonzales, LA**  
225.647.7575

**Harvey, LA**  
504.367.8090

**Houma, LA**  
985.580.4273

**Lafayette, LA**  
337.267.1440

**Theodore, AL**  
251.338.7525

### CANADA

**Calgary, Alberta**  
403.279.1924

**Coquitlam, BC**  
604.464.6979

**Edmonton, Alberta**  
780.468.2588 (Manus)  
780.425.5510 (Mod-U-Blast)

**Hamilton, Ontario**  
905.527.6000 / 888.794.5665

**Mississauga, Ontario**  
905.890.5837

**Winnipeg, Manitoba**  
204.256.3324

**WWW.ALLREDI-US.COM / 800.252.7848**

**WWW.ALLREDI-CA.COM / 800.661.3842**

Allredi™ and Marco® are registered trademarks of Allredi, LLC.  
Mod-U-Blast® is a registered trademark of Allredi Blast & Abrasives Canada, Inc.  
All other brand names or marks are used for identification purposes and are trademarks of their respective owners.

**ALLREDI™**

Literature #106M129\_3/1/2024