



MARCO® 750 CFM AFTERCOOLER WITH COALESCING TANK



PART NUMBERS AND SCHEMATICS GUIDE

Company Profile

Allredi was formed in the early 2020, when two of the largest distributors in the blasting, coating, safety, and environmental industry, APE Companies and Marco Group International, joined forces. While the qualities both companies are known for have not changed, a lot about our business is new. New abilities. New agilities. New ways to help you win. This calls for a new name, Allredi.

This name exemplifies what we have become. It is completely oriented to the needs of our customers. To your needs. It says that when you call us for anything – products, service, expert advice, anything – you can consider it done. Or even better, Allredi done.

We are your right-now supplier. From skills to SKUs, we deliver the goods fast. So you can be more agile every minute, every day. This is who we are. This is what our new name means. Go ahead and expect excellence, because we're bringing it.

Our Mission and Vision

To be the industry's preferred partner in surface preparation solutions through unrivaled technical expertise, customer experience, product availability, and tailored service offerings.

The Allredi Difference

- **Industry Experience** – With Allredi on your team, you have access to expertise which can only come from decades of industry leadership. We have organized our engineering department, production specialists, customer operations, and safety support into a "Center of Competence." As an Allredi customer, you have access to hundreds of years of cumulative experience related to your operations.
- **Manufacturing Excellence** – Allredi is a U.S. based manufacturer of equipment for the Surface Preparation and Protective Coatings industries. Allredi's engineers benchmark the industry to ensure that we design and manufacture superior products that set the "Gold Standard" for performance, safety, and quality.
- **Legendary Customer Service** – Allredi's legendary customer service team is staffed by friendly, highly-trained individuals who are focused on providing the highest level of product support, order accuracy, and customer satisfaction.
- **Product Availability** – We stock over 10,000 SKU's and have over 45 shipping locations to serve North American and International markets for all major brands of blasting, coating, environmental, and safety equipment. Allredi is your right-now supplier, so you can keep your projects moving. From our foundation of strong relationships, we have built a nationwide network that puts vast inventory and ready service close to our customers. We provide advanced expertise, and we deliver the goods fast – so you can easily access the products and services you need to me more agile every minute, every day.
- **Technology Leadership** – Our website provides: Operator's Manuals, Part Numbers and Schematics Guides, SDS information, and key product features and specifications, providing access to information 24/7.

TABLE OF CONTENTS

Company Profile	2
Table of Contents	3
Part Numbers	4
Specifications	5
Part Numbers & Schematics	6-14
Marco® 750 CFM Aftercooler With Coalescing Tank—Pneumatic	6-7
Marco® 750 CFM Aftercooler With Coalescing Tank—115 Volt Electric.	8-9
Marco® 750 CFM Aftercooler With Coalescing Tank—230 Volt Electric.	10-11
Aftercooler Assembly—Pneumatic	12
Aftercooler Assembly—Electric	13
Transfer Hose Assembly.	14
Inlet Filter Assembly	15
Air Regulator/Lubricator	16
Optional Accessories	17-18
Airflow Shutoff Kits – Lug Fittings.	17
Airflow Shutoff Kits – Hammerlock Fittings.	17
Pressure Relief Valves	18
Pipe Plugs	18
Lubrication	18
Maintenance Notes	19

PART NUMBERS

MARCO® 750 CFM AFTERCOOLER WITH COALESCING TANK

Part Numbers	Inlet			Outlet			Power Source	Filter, Regulator, and Lubricator	Electric Starter Box
	Inlet Quantity	Inlet Size	Fittings	Outlet Quantity	Outlet Size	Fittings			
10101173	1	3"	Not Included	9	(2) 3", (2) 2", (1) 1-1/4", (4) 1"	Not Included	Pneumatic	Included	Not Included
10108806	1	3"	Not Included	9	(2) 3", (2) 2", (1) 1-1/4", (4) 1"	Not Included	115-Volt AC	Not Included	Included
10101174	1	3"	Not Included	9	(2) 3", (2) 2", (1) 1-1/4", (4) 1"	Not Included	230-Volt AC	Not Included	Included

* Inlet fittings include 3" (M) x 2" (F) Reducing Bushing.



10101173



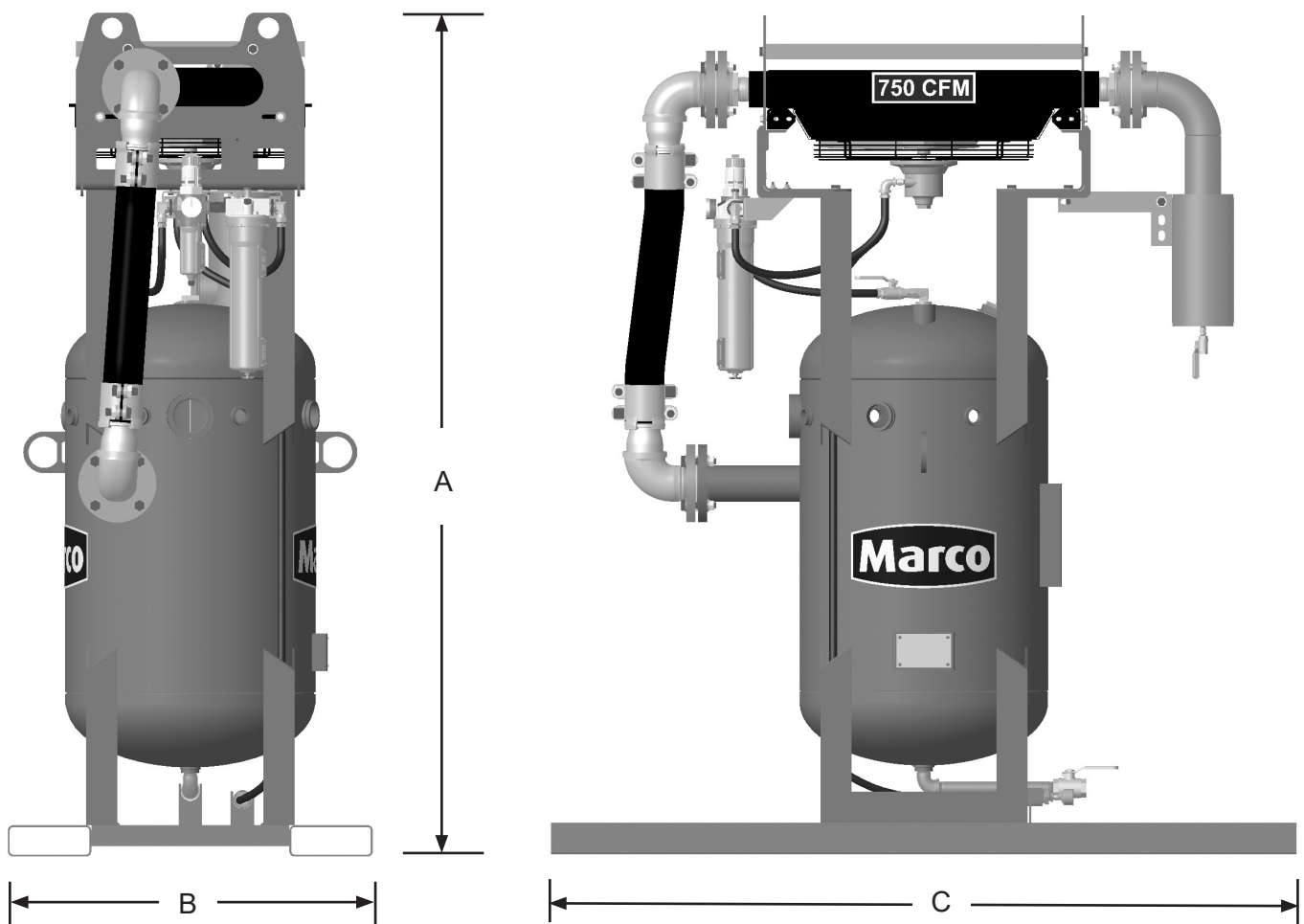
10108806 & 10101174

SPECIFICATIONS

Lubrication: SAE 10 oil or Air Tool Anti-freeze Lubricant

Empty Weight: 900 Pounds

Overall Dimensions: A: 81"
B: 35"
C: 72"



Pneumatic model shown. Electric model has same dimensions.

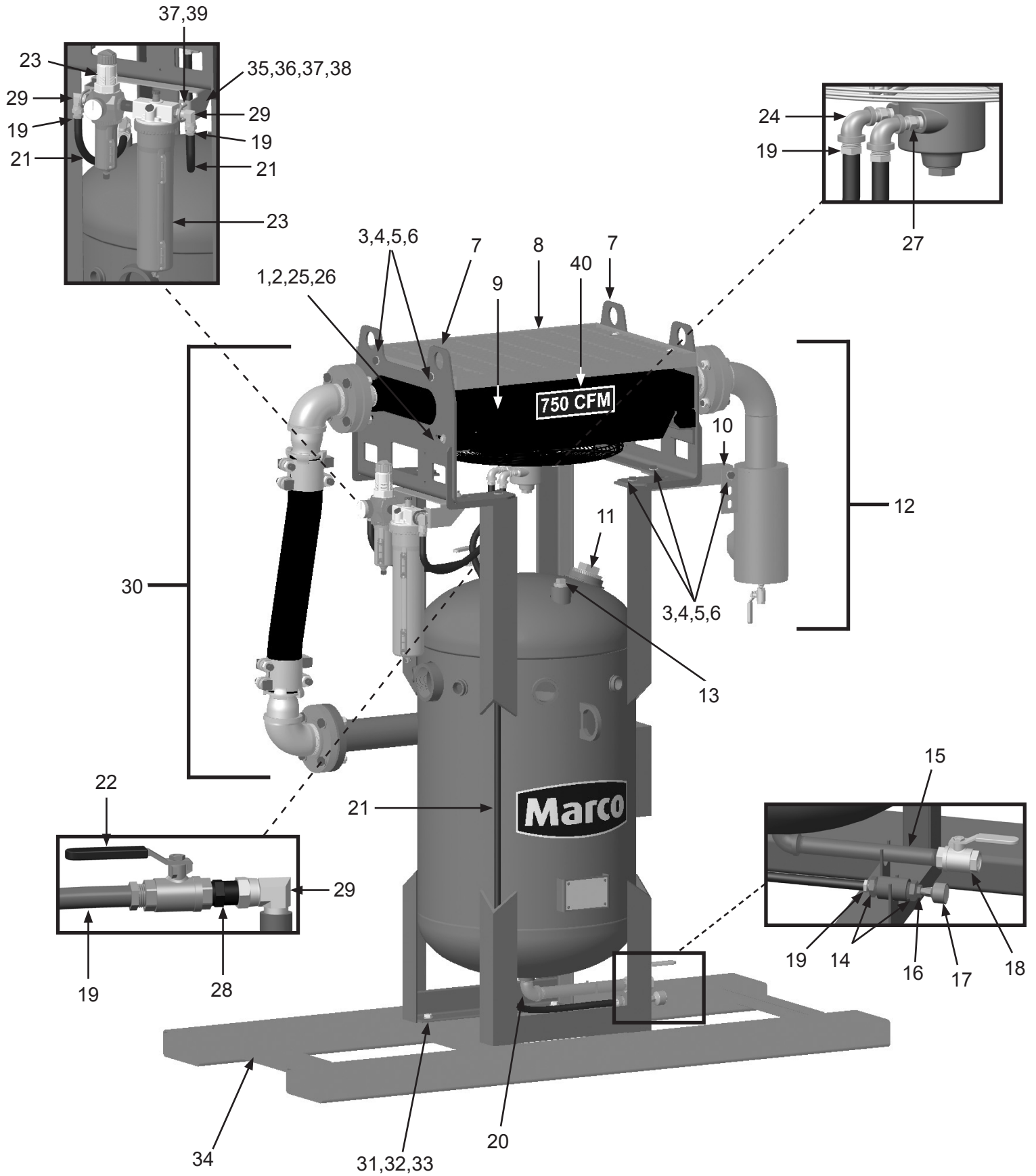
PART NUMBERS & SCHEMATICS

Marco® 750 CFM Aftercooler With Coalescing Tank—Pneumatic

Item #	Part #	Description
Fig. 1		
—	10101173	Marco® 750 CFM Aftercooler with Coalescing Tank—Pneumatic
1	10101059	3/8-16 x 1-1/4" Galvanized Bolt <i>(Four Required)</i>
2	10101942	3/8" x 3/4" Washer Galvanized <i>(Eight Required)</i>
3	10101943	1/2-13 x 1-3/4" Bolt Galvanized <i>(10 Required)</i>
4	10100674	1/2" Flat Washer Galvanized <i>(20 Required)</i>
5	10100675	1/2" Split Lock Washer Galvanized <i>(10 Required)</i>
6	10101941	1/2-13 Hex Nut Galvanized <i>(10 Required)</i>
7	10101176	Mounting Bracket <i>(Two Required)</i>
8	10101179	Heat Exchanger Protective Grate
9	10TTAHP7255	750 CFM Aftercooler - Pneumatic—Complete (See Fig. 4)
10	10101170	Brace
11	10101034	3" NPT Galvanized Pipe Plug
12	—	Inlet Filter Assembly <i>(See Fig. 7)</i>
13	1011902	1-1/4" NPT Galvanized Pipe Plug
14	1011812	1" to 1/2" Bushing
15	10101064	1" x 12" NPT Pipe Nipple
16	1011818	1/2" to 1/4" Bushing
17	10101784	Aftercooler Muffler
18	1011601	1" NPT Full Port Valve
19	10PAF050	1/2" Push-on Hose Fitting <i>(Six Required)</i>
20	1011801	1" NPT Street Elbow
21	10AH012	1/2" I.D. Air Hose <i>(Per Foot)</i>
22	10L363	1/2" NPT Full Port Ball Valve
23	10105890	Air Regulator/Lubricator with Pressure Gauge <i>(See Fig. 8)</i>
24	10101185	1/2" x 1/4" Reducing Elbow <i>(Two Required)</i>
25	10L805015	3/8" Lock Washer Galvanized <i>(Four Required)</i>
26	10101938	3/8"-16 Hex Nut Galvanized <i>(Four Required)</i>
27	1017019	1/4" NPT Hex Nipple <i>(Two Required)</i>
28	20100677	1/2" NPT Hex Nipple
29	10SAP1290	1/2" 90° Swivel <i>(Three Required)</i>
30	—	Transfer Hose Assembly <i>(See Fig. 6)</i>
31	10107495	1/2-13 x 1-5/8" Grade 8 Hex Bolt Zinc <i>(Four Required)</i>
32	10107496	1/2-13 Grade 8 Lock Nut Zinc <i>(Four Required)</i>
33	10104711	1/2" Grade 8 Flat Washer Zinc <i>(Eight Required)</i>
34	10101024	Skid Weldment
35	10108281	Mounting Bracket
36	10105903	1/4-20 x 1-1/4" Hex Bolt <i>(Four Required)</i>
37	10101940	1/4" Flat Washer <i>(12 Required)</i>
38	10101939	1/4-20 Stainless Steel Lock Nut with Nylon Insert <i>(Four Required)</i>
39	10109052	U-Bolt <i>(Two Required)</i>
40	1094536	750 CFM Product Sticker
—	1070517	Pneumatic Tool Oil — 32 oz.

PART NUMBERS AND SCHEMATICS

Figure 1: Marco® 750 CFM Aftercooler With Coalescing Tank—Pneumatic



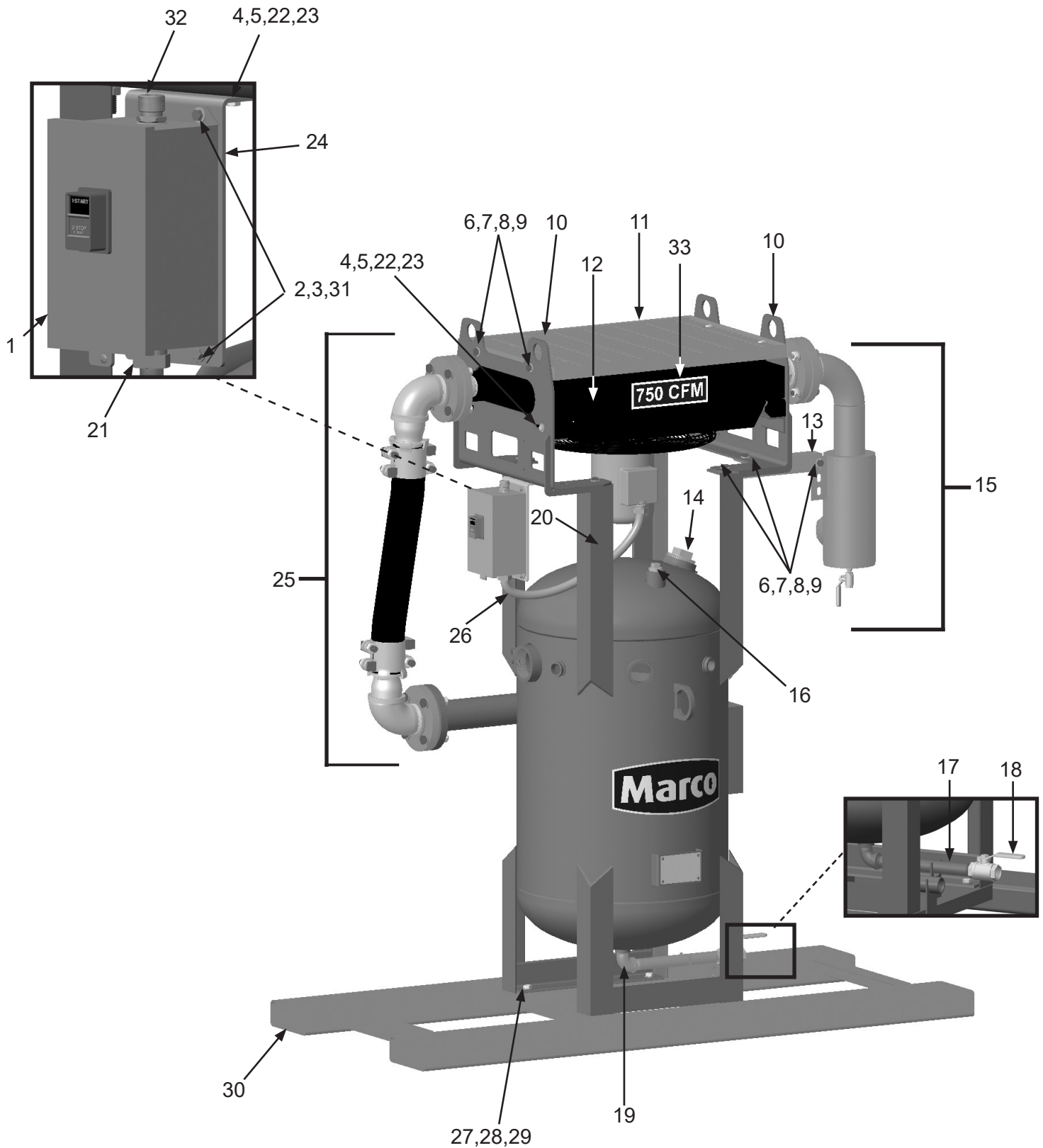
PART NUMBERS AND SCHEMATICS

Marco® 750 CFM Aftercooler With Coalescing Tank—115 Volt Electric

Item #	Part #	Description
Fig. 2		
—	10108806	Marco® 750 CFM Aftercooler with Coalescing Tank—115 Volt Electric
1	10108792	1 Phase Electric Motor Starter - 3 HP to 5 HP
2	1012154	1/4-20 x 1" Hex Bolt Zinc (<i>Four Required</i>)
3	1014017	1/4" Flat Washer Zinc (<i>Eight Required</i>)
4	10101059	3/8-16 x 1-1/4" Bolt Galvanized (<i>Four Required</i>)
5	10101942	3/8" x 3/4" Washer Galvanized (<i>Eight Required</i>)
6	10101943	1/2-13 x 1-3/4" Hex Bolt Galvanized (<i>10 Required</i>)
7	10100674	1/2" Flat Washer Galvanized (<i>20 Required</i>)
8	10100675	1/2" Split Lock Washer Galvanized (<i>10 Required</i>)
9	10101941	1/2-13 Hex Nut Galvanized (<i>10 Required</i>)
10	10101176	Mounting Bracket (<i>Two Required</i>)
11	10101179	Heat Exchanger Protective Grate
12	10TTAHP7252	750 CFM Aftercooler Assembly - Electric - Complete (<i>See Fig. 5</i>)
13	10101170	Brace
14	10101034	3" NPT Galvanized Pipe Plug
15	—	Inlet Filter Assembly (<i>See Fig. 7</i>)
16	1011902	1-1/4" NPT Galvanized Pipe Plug
17	10101064	1" x 12" NPT Pipe Nipple
18	1011601	1" NPT Full Port Valve
19	1011801	1" NPT Street Elbow
20	20G100737	1/2" NPT Pipe Plug
21	10103303	3/4" Conduit Hub (<i>Two Required</i>)
22	10L805015	3/8" Lock Washer Galvanized (<i>Four Required</i>)
23	10101938	3/8"-16 Hex Nut Galvanized (<i>Four Required</i>)
24	10108830	Motor Starter Bracket
25	—	Transfer Hose Assembly (<i>See Fig. 6</i>)
26	10103304	3/4" Flexible Conduit
27	10107495	1/2-13 x 1-5/8" Grade 8 Hex Bolt Zinc (<i>Four Required</i>)
28	10107496	1/2-13 Grade 8 Lock Nut Zinc (<i>Four Required</i>)
29	10104711	1/2" Grade 8 Flat Washer Zinc (<i>Eight Required</i>)
30	10101024	Skid Weldment
31	1012323	1/4"-20 Lock Nut Zinc (<i>Four Required</i>)
32	20101197	3/4" NPT Cord Grip
33	1094536	750 CFM Product Sticker
—	10108798	Thermal Unit - Full Load Current 16.2 - 17.6 Amps
—	1091017	Hazard Identification Tag
—	106M093	Part Numbers and Schematics Guide – Marco® 750 CFM Aftercooler with Coalescing Tank
—	1090093	Operator's Manual – Marco® 750 CFM Aftercooler with Coalescing Tank

PART NUMBERS AND SCHEMATICS

Figure 2: Marco® 750 CFM Aftercooler With Coalescing Tank—115 Volt Electric



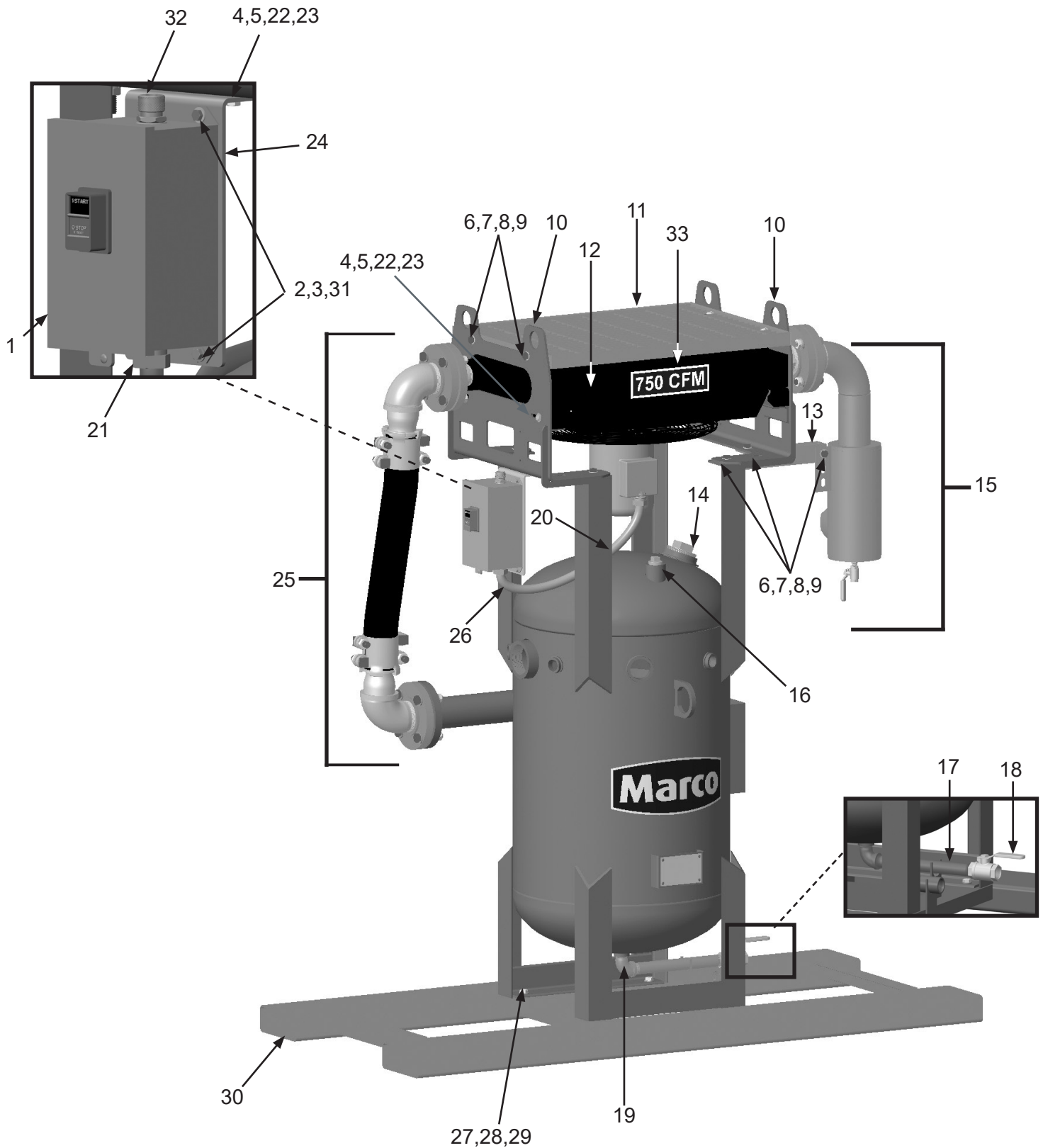
PART NUMBERS AND SCHEMATICS

Marco® 750 CFM Aftercooler With Coalescing Tank—230 Volt Electric

Item #	Part #	Description
Fig. 3		
—	10101174	Marco® 750 CFM Aftercooler with Coalescing Tank—230 Volt Electric
1	10101760	Electric Motor Starter Box – Single Phase
2	1012154	1/4-20 x 1" Hex Bolt Zinc (<i>Four Required</i>)
3	1014017	1/4" Flat Washer Zinc (<i>Eight Required</i>)
4	10101059	3/8-16 x 1-1/4" Bolt Galvanized (<i>Four Required</i>)
5	10101942	3/8" x 3/4" Washer Galvanized (<i>Eight Required</i>)
6	10101943	1/2-13 x 1-3/4" Hex Bolt Galvanized (<i>10 Required</i>)
7	10100674	1/2" Flat Washer Galvanized (<i>20 Required</i>)
8	10100675	1/2" Split Lock Washer Galvanized (<i>10 Required</i>)
9	10101941	1/2-13 Hex Nut Galvanized (<i>10 Required</i>)
10	10101176	Mounting Bracket (<i>Two Required</i>)
11	10101179	Heat Exchanger Protective Grate
12	10TTAHP7252	750 CFM Aftercooler Assembly - Electric - Complete (<i>See Fig. 5</i>)
13	10101170	Brace
14	10101034	3" NPT Galvanized Pipe Plug
15	—	Inlet Filter Assembly (<i>See Fig. 7</i>)
16	1011902	1-1/4" NPT Galvanized Pipe Plug
17	10101064	1" x 12" NPT Pipe Nipple
18	1011601	1" NPT Full Port Valve
19	1011801	1" NPT Street Elbow
20	20G100737	1/2" NPT Pipe Plug
21	10103303	3/4" Conduit Hub (<i>Two Required</i>)
22	10L805015	3/8" Lock Washer Galvanized (<i>Four Required</i>)
23	10101938	3/8"-16 Hex Nut Galvanized (<i>Four Required</i>)
24	10108830	Motor Starter Bracket
25	—	Transfer Hose Assembly (<i>See Fig. 6</i>)
26	10103304	3/4" Flexible Conduit
27	10107495	1/2-13 x 1-5/8" Grade 8 Hex Bolt Zinc (<i>Four Required</i>)
28	10107496	1/2-13 Grade 8 Lock Nut Zinc (<i>Four Required</i>)
29	10104711	1/2" Grade 8 Flat Washer Zinc (<i>Eight Required</i>)
30	10101024	Skid Weldment
31	1012323	1/4"-20 Lock Nut Zinc (<i>Four Required</i>)
32	20101299	3/4" NPT Cord Grip
33	1094536	750 CFM Product Sticker
—	10108796	Thermal Unit - Full Load Current 8.48 - 9.83 Amps
—	1091017	Hazard Identification Tag
—	106M093	Part Numbers and Schematics Guide – Marco® 750 CFM Aftercooler with Coalescing Tank
—	1090093	Operator's Manual – Marco® 750 CFM Aftercooler with Coalescing Tank

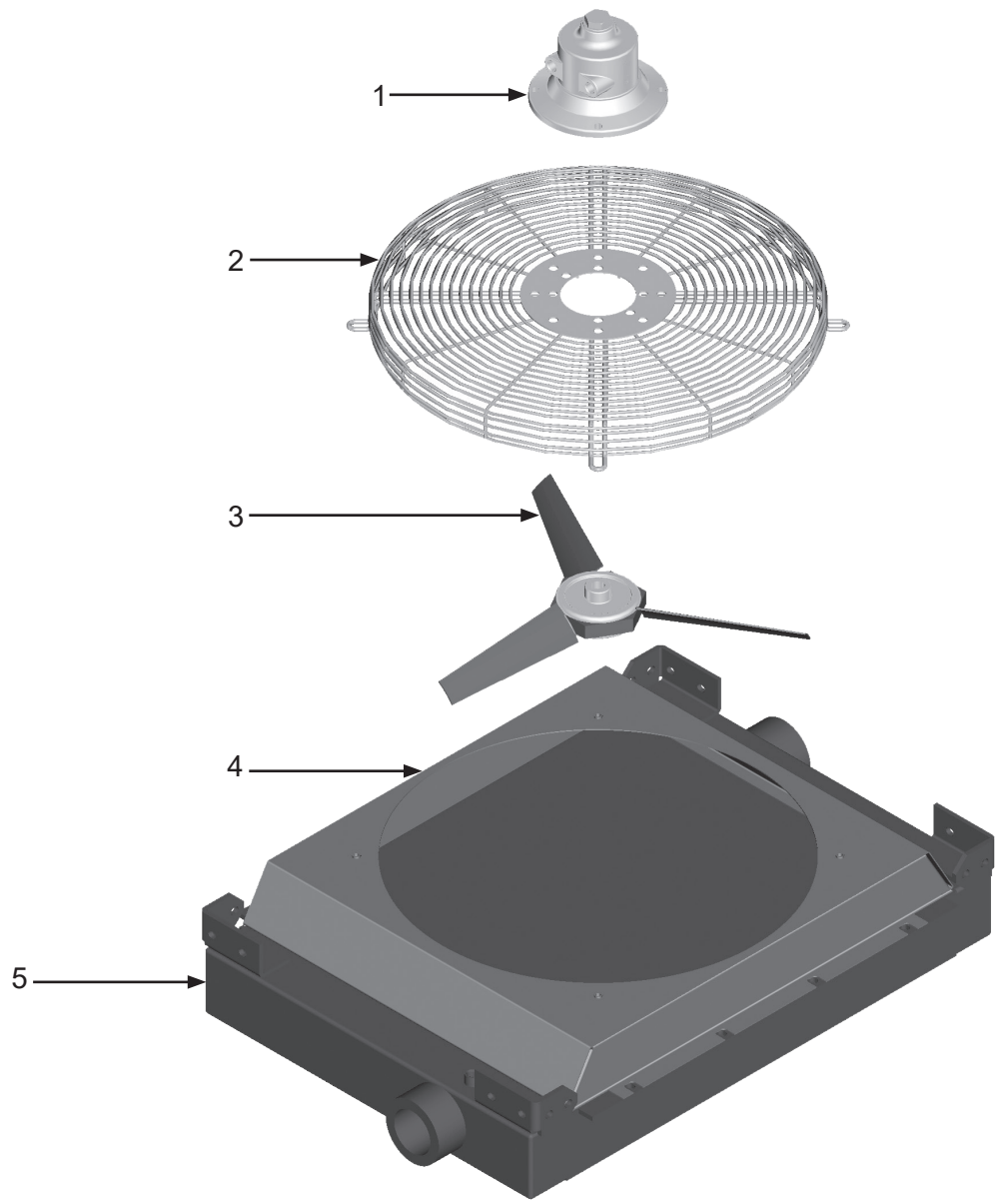
PART NUMBERS AND SCHEMATICS

Figure 3: Marco® 750 CFM Aftercooler With Coalescing Tank—230 Volt Electric



PART NUMBERS AND SCHEMATICS

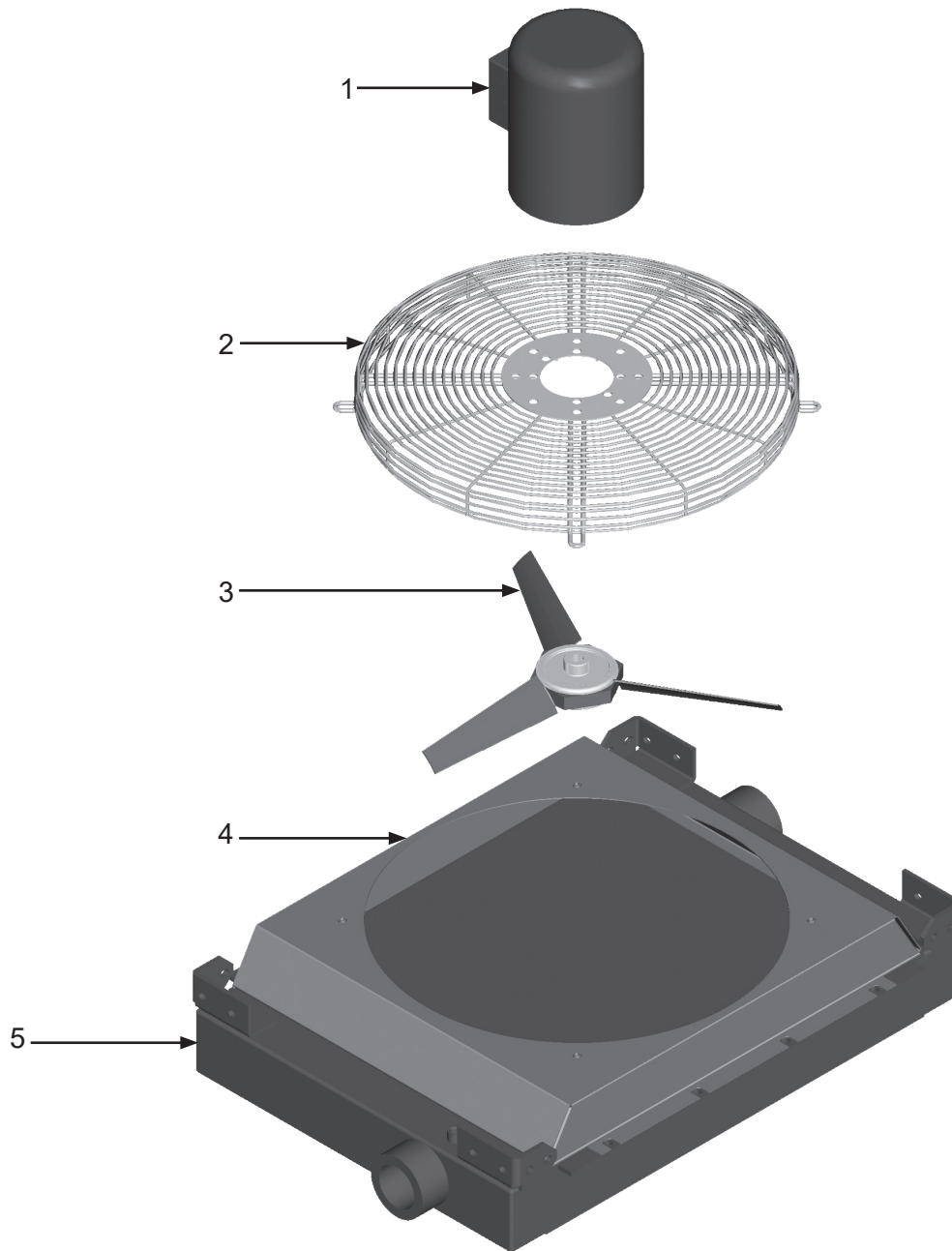
Figure 4: Aftercooler Assembly—Pneumatic



Item #	Part #	Description
Fig. 4		
—	10TTAHP7255	750 CFM Aftercooler – Pneumatic – Complete
1	10101780	Air Motor
2	10101792	Fan Guard
3	10101791	Fan Blade Assembly (Includes Blades and Hub)
4	10104171	Aftercooler Shroud
5	10101790	Aftercooler Core
—	10101781	Air Motor Service Kit (Includes: shaft seal, drive end bearing, dead end bearing, four vanes, four push pins, four vane springs, shim, end cap gasket, muffler cartridge, and muffler felt)

PART NUMBERS AND SCHEMATICS

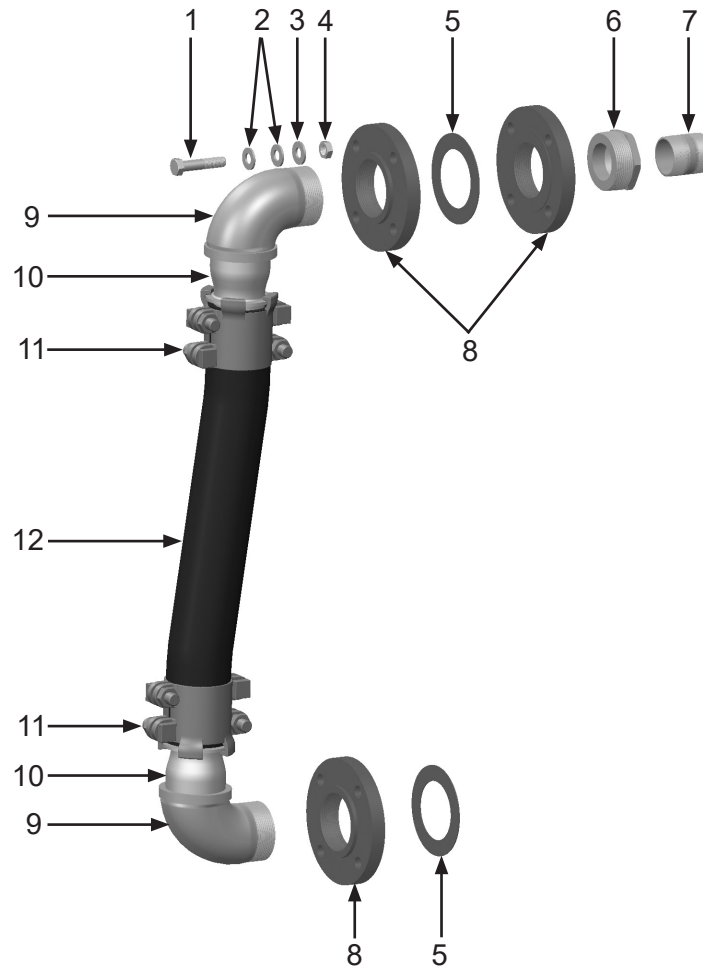
Figure 5: Aftercooler Assembly—Electric



Item #	Part #	Description
Fig. 5		
—	10TTAHP7252	750 CFM Aftercooler – Electric – Complete
1	10101793	Electric Motor – (115 Volt to 208-230 Volt) – Single Phase
2	10101792	Fan Guard
3	10101791	Fan Blade Assembly (Includes Blades and Hub)
4	10104171	Aftercooler Shroud
5	10101790	Aftercooler Core

PART NUMBERS AND SCHEMATICS

Figure 6: Transfer Hose Assembly



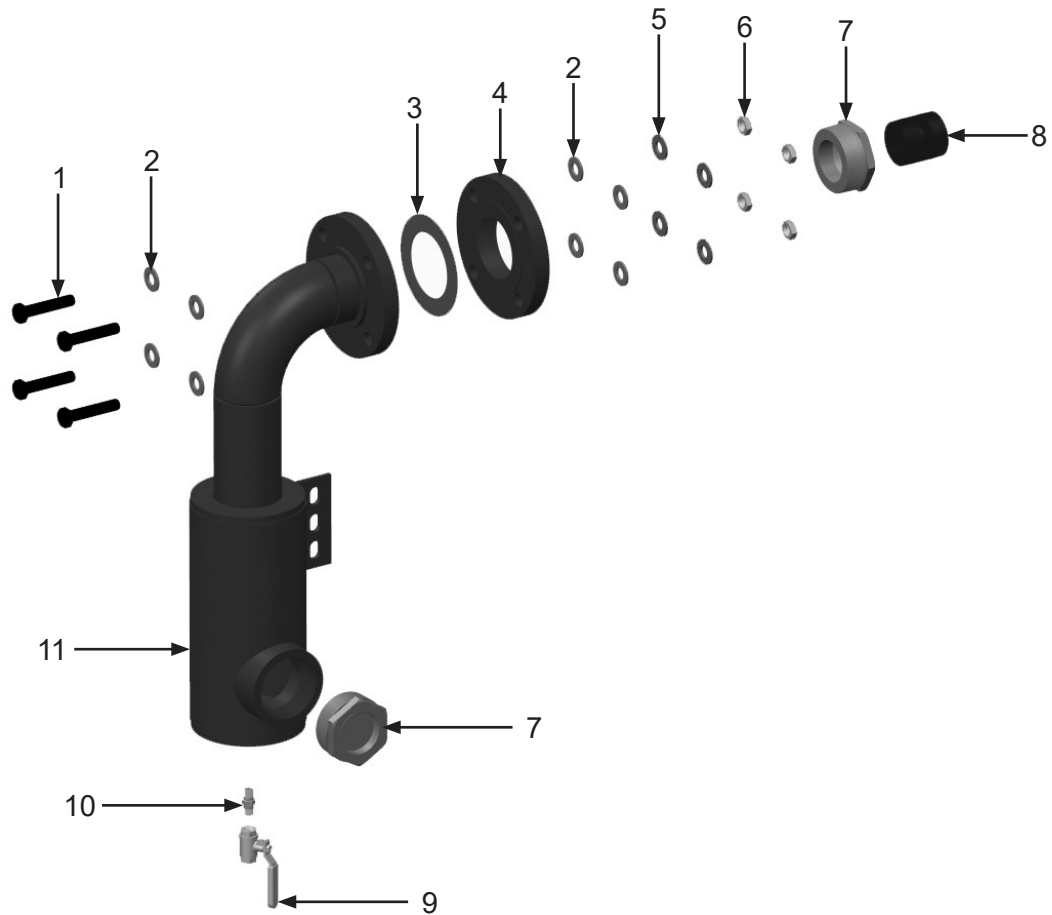
Item #	Part #	Description
--------	--------	-------------

Fig. 6

1	10101058	5/8"-11 X 3" Grade 8 Bolt <i>(Four Required)</i>
2	10101060	5/8" Flat Washer <i>(Eight Required)</i>
3	10103399	5/8" Grade 8 Split Lock Washer <i>(Four Required)</i>
4	10103393	5/8-11 Grade 8 Hex Nut <i>(Four Required)</i>
5	10101047	Flange Gasket
6	10101183	3" to 2" Bushing
7	1001806	2" NPT Close Nipple
8	10101041	3" NPT Threaded Flange <i>(Three Required)</i>
9	10101148	3" NPT Street Elbow <i>(Two Required)</i>
10	10101754	3" NPT Hose Stem <i>(Two Required)</i>
11	10BU35	3" Boss Clamp <i>(Two Required)</i>
12	10101045	3" I.D. Steel Reinforced Air Hose <i>(Per Foot)</i>

PART NUMBERS AND SCHEMATICS

Figure 7: Inlet Filter Assembly



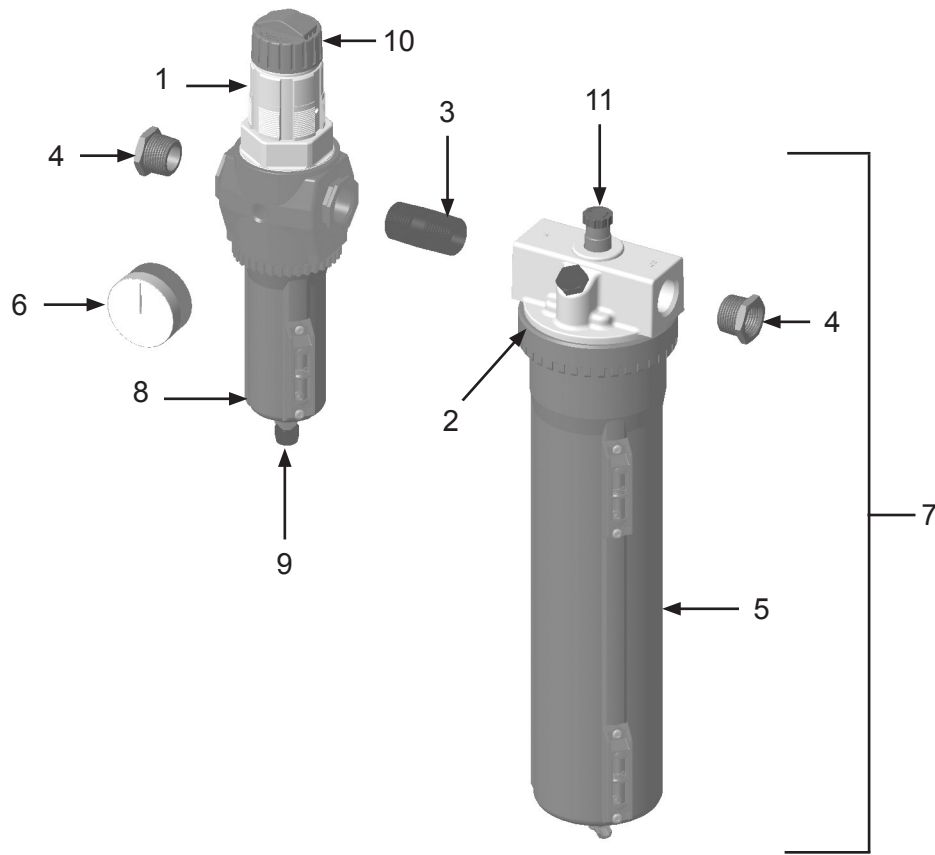
Item #	Part #	Description
--------	--------	-------------

Fig. 7

1	10101058	5/8-11 X 3" Grade 8 Bolt <i>(Four Required)</i>
2	10101060	5/8" Flat Washer <i>(Eight Required)</i>
3	10101047	Flange Gasket
4	10101041	3" NPT Threaded Flange
5	10103399	5/8" Grade 8 Split Lock Washer <i>(Four Required)</i>
6	10103393	5/8-11 Grade 8 Hex Nut <i>(Four Required)</i>
7	10101183	3" to 2" Bushing <i>(Two Required)</i>
8	1001806	2" NPT Close Nipple
9	1080050	1/4" NPT Full Port Ball Valve
10	1017019	1/4" NPT Hex Nipple
11	10101049	Inlet Moisture Separator





PART NUMBERS AND SCHEMATICS






Figure 8: Air Filter/Regulator/Lubricator






Item #	Part #	Description
Fig. 8		
	10105890	Air Filter/Regulator/Lubricator with Pressure Gauge—Pneumatic—Complete
1	10SC10105891	Filter/Regulator - Complete
2	10106432	Large O-ring - Lubricator
3	10105894	3/4" x 2" Pipe Nipple
4	10105895	3/4" x 1/2" Reducing Bushing (<i>Two Required</i>)
5	10SC10106507	Extended Metal Bowl Kit for Lubricator (<i>Includes: 2 Sight Glasses and O-Ring</i>)
6	1028606	Pressure Gauge – 0-160 PSI 1/4" – Back Mount
7	10110133	Lubricator (<i>Includes #s: 2 and 5</i>)
8	10SWCABF115100	Metal Bowl Kit for Filter/Regulator (<i>Includes: Bowl, Sight Glass, Manual Drain, Nut, Knob, Clip, Retaining Ring and O-Rings</i>)
9	10SWCA80232	Manual Drain Kit for Filter/Regulator (<i>Includes: Drain, Nut, Knob, Clip and O-Ring</i>)
10	10SKA3762	Adjustment Knob for Filter/Regulator (<i>Includes: Adjusting Knob, Adjusting Key, Screw and Drive Nut</i>)
11	10106506	Cartridge Kit for Lubricator (<i>Includes: Adjusting Knob and Sight Dome</i>)
—	10106504	Diaphragm Kit for Filter/Regulator (<i>Includes: Diaphragm, Rest, Washer and O-Ring</i>)
—	1070517	Pneumatic Tool Oil - 32 oz.




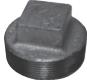

OPTIONAL ACCESSORIES

		AIRFLOW SHUTOFF KITS – LUG FITTINGS			
	Part Numbers	Pipe String I.D.	Close Nipple	Full Port Ball Valve	Coupling
	10103731	1"	1012151	1011601	10ME2
	10103732	1-1/4"	1011201 (Quantity of Two)	1011602	10ME3
	10103733	1-1/2"	1014015 (Quantity of Two)	1011603	10ME4
	10103734	2"	1001806 (Quantity of Two)	1011604	10ME5

		AIRFLOW SHUTOFF KITS – HAMMERLOCK FITTINGS			
	Part Numbers	Pipe String I.D.	Close Nipple	Full Port Ball Valve	Coupling Spud
	10103830	1"	10102151 (Quantity of Two)	1011601	10DXGB13
	10103831	1-1/4"	1011201 (Quantity of Two)	1011602	10DXGB18
	10103832	1-1/2"	1014015 (Quantity of Two)	1011603	10DXGB23
	10103833	2"	1001806 (Quantity of Two)	1011604	10DXGB28
	10103934	3"	10101040 (Quantity of Two)	1011608	10GB38

OPTIONAL ACCESSORIES

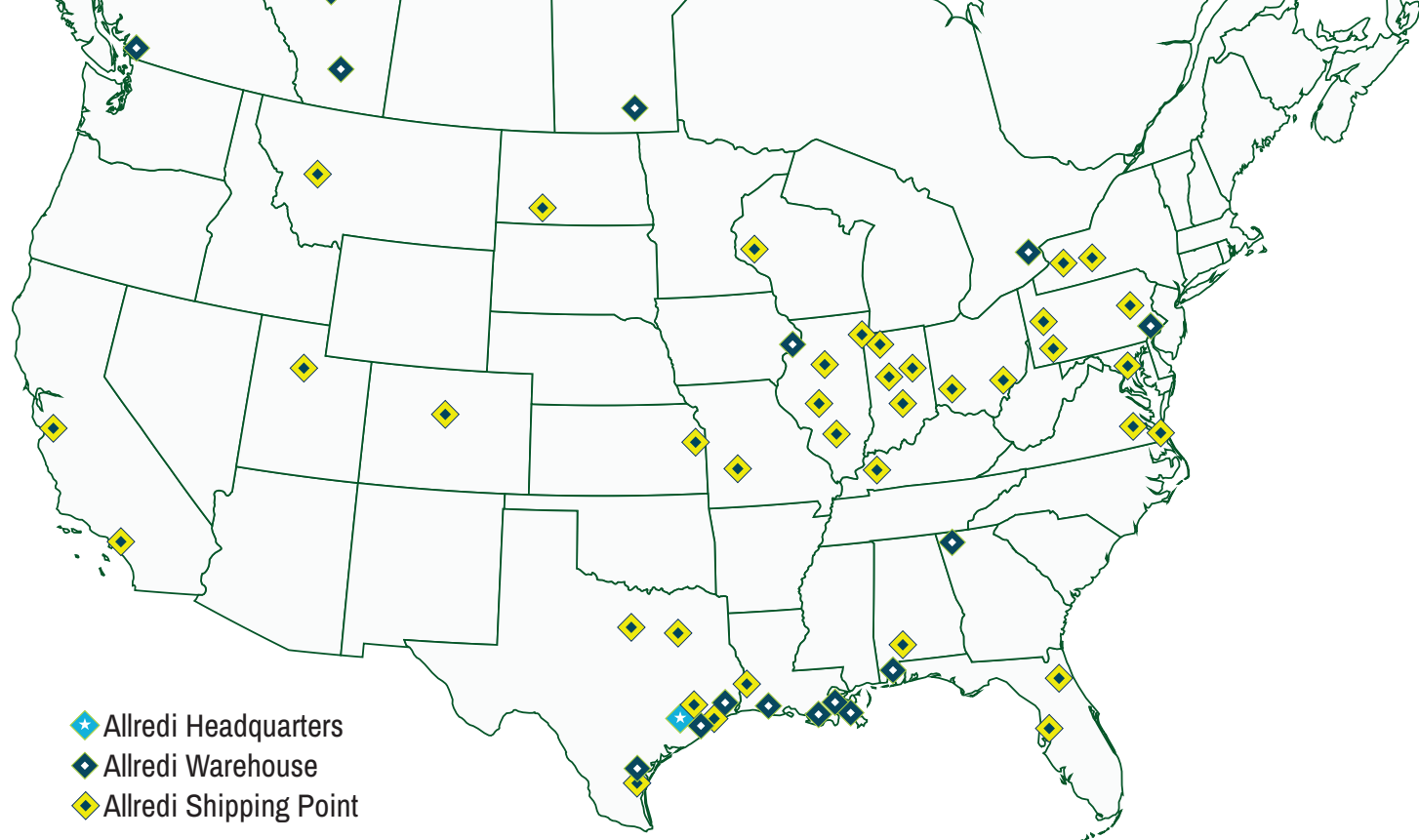
	Part Numbers	PRESSURE RELIEF VALVES	
		PSI	Inlet Size
	10E1POPOFF150	150	1"
	10EPOPOFF125	125	1-1/4"
	10EPOPOFF150	150	1-1/4"




	Part Numbers	GALVANIZED SQUARE HEAD PIPE PLUGS
		Size
	1011901	1"
	1011902	1-1/4"
	1011101	1-1/2"
	1011823	2"
	10101034	3"

Part Numbers	LUBRICATION
1070517	Pneumatic Air Tool Oil - 32 oz. bottle

MAINTENANCE NOTES

[illegible]



-  Allredi Headquarters
-  Allredi Warehouse
-  Allredi Shipping Point

ALLREDI THERE

Serving these industries: Bridge, Pipeline, Tank & Tower, Concrete Services, Rail, Shipyard & Marine, Pools & Fountains, and Foundry

UNITED STATES

Pasadena, TX (Headquarters)
844.361.7038

Beaumont, TX
409.722.1284

Bristol, PA
215.826.8080

Corpus Christi, TX
361.887.2038

Davenport, IA
563.324.2519

Deer Park, TX
(Service & Rental Location)
281.930.0905

Duluth, GA
800.535.4564

Gonzales, LA
225.647.7575

Harvey, LA
504.367.8090

Houma, LA
985.580.4273

Lafayette, LA
337.267.1440

Theodore, AL
251.338.7525

CANADA

Calgary, Alberta
403.279.1924

Coquitlam, BC
604.464.6979

Edmonton, Alberta
780.468.2588 (Manus)
780.425.5510 (Mod-U-Blast)

Hamilton, Ontario
905.527.6000 / 888.794.5665

Mississauga, Ontario
905.890.5837

Winnipeg, Manitoba
204.256.3324

WWW.ALLREDI-US.COM / 800.252.7848

WWW.ALLREDI-CA.COM / 800.661.3842

Allredi™ and Marco® are registered trademarks of Allredi, LLC.
Mod-U-Blast® is a registered trademark of Allredi Blast & Abrasives Canada, Inc.
All other brand names or marks are used for identification purposes and are trademarks of their respective owners.

ALLREDI™

Literature #106M093_6/6/2025