



## MARCO® 400 CFM CART-MOUNTED AFTERCOOLER



## PART NUMBERS AND SCHEMATICS GUIDE

## Company Profile

Allredi was formed in the early 2020, when two of the largest distributors in the blasting, coating, safety, and environmental industry, APE Companies and Marco Group International, joined forces. While the qualities both companies are known for have not changed, a lot about our business is new. New abilities. New agilities. New ways to help you win. This calls for a new name, Allredi.

This name exemplifies what we have become. It is completely oriented to the needs of our customers. To your needs. It says that when you call us for anything – products, service, expert advice, anything – you can consider it done. Or even better, Allredi done.

We are your right-now supplier. From skills to SKUs, we deliver the goods fast. So you can be more agile every minute, every day. This is who we are. This is what our new name means. Go ahead and expect excellence, because we're bringing it.

## Our Mission and Vision

To be the industry's preferred partner in surface preparation solutions through unrivaled technical expertise, customer experience, product availability, and tailored service offerings.

## The Allredi Difference

- **Industry Experience** – With Allredi on your team, you have access to expertise which can only come from decades of industry leadership. We have organized our engineering department, production specialists, customer operations, and safety support into a "Center of Competence." As an Allredi customer, you have access to hundreds of years of cumulative experience related to your operations.
- **Manufacturing Excellence** – Allredi is a U.S. based manufacturer of equipment for the Surface Preparation and Protective Coatings industries. Allredi's engineers benchmark the industry to ensure that we design and manufacture superior products that set the "Gold Standard" for performance, safety, and quality.
- **Legendary Customer Service** – Allredi's legendary customer service team is staffed by friendly, highly-trained individuals who are focused on providing the highest level of product support, order accuracy, and customer satisfaction.
- **Product Availability** – We stock over 10,000 SKU's and have over 45 shipping locations to serve North American and International markets for all major brands of blasting, coating, environmental, and safety equipment. Allredi is your right-now supplier, so you can keep your projects moving. From our foundation of strong relationships, we have built a nationwide network that puts vast inventory and ready service close to our customers. We provide advanced expertise, and we deliver the goods fast – so you can easily access the products and services you need to me more agile every minute, every day.
- **Technology Leadership** – Our website provides: Operator's Manuals, Part Numbers and Schematics Guides, SDS information, and key product features and specifications, providing access to information 24/7.

# TABLE OF CONTENTS

<b>Company Profile</b> .....	<b>2</b>
<b>Table of Contents</b> .....	<b>3</b>
<b>Part Numbers</b> .....	<b>4</b>
<b>Specifications</b> .....	<b>5</b>
<b>Part Numbers and Schematics</b> .....	<b>6-13</b>
Marco® 400 CFM Cart Mounted Aftercooler—Pneumatic .....	6-7
Marco® 400 CFM Cart Mounted Aftercooler—Electric .....	8-9
Aftercooler Assembly—Pneumatic .....	10
Aftercooler Assembly—Electric .....	11
Air Regulator/Lubricator .....	12
1-1/2" Junior Extractor Moisture Separator Assembly .....	13
<b>Optional Accessories</b> .....	<b>14</b>
Lubrication .....	14
<b>Maintenance Notes</b> .....	<b>15</b>

## PART NUMBERS

MARCO® 400 CFM CART MOUNTED AFTERCOOLER										
Part Numbers	Inlet			Outlet			Power Source	Filter, Regulator, and Lubricator	1-1/2" Junior Extractor Moisture Separator	Electric Starter Box
	Inlet Quantity	Inlet Size	Fittings	Outlet Quantity	Outlet Size	Fittings				
10101731	1	1-1/2"	Included	1	1-1/2"	Included	Pneumatic	Included	Included	Not Included
10101732	1	1-1/2"	Included	1	1-1/2"	Included	115-Volt AC	Not Included	Included	Included
10108810	1	1-1/2"	Included	1	1-1/2"	Included	230-Volt AC	Not Included	Included	Included

\* Inlet fittings include 1-1/2" 4-Lug Female Coupling. Outlet fittings include 1-1/2" 4-Lug Female Coupling.



**Marco® 400 CFM Cart-Mounted  
Aftercooler – Pneumatic**



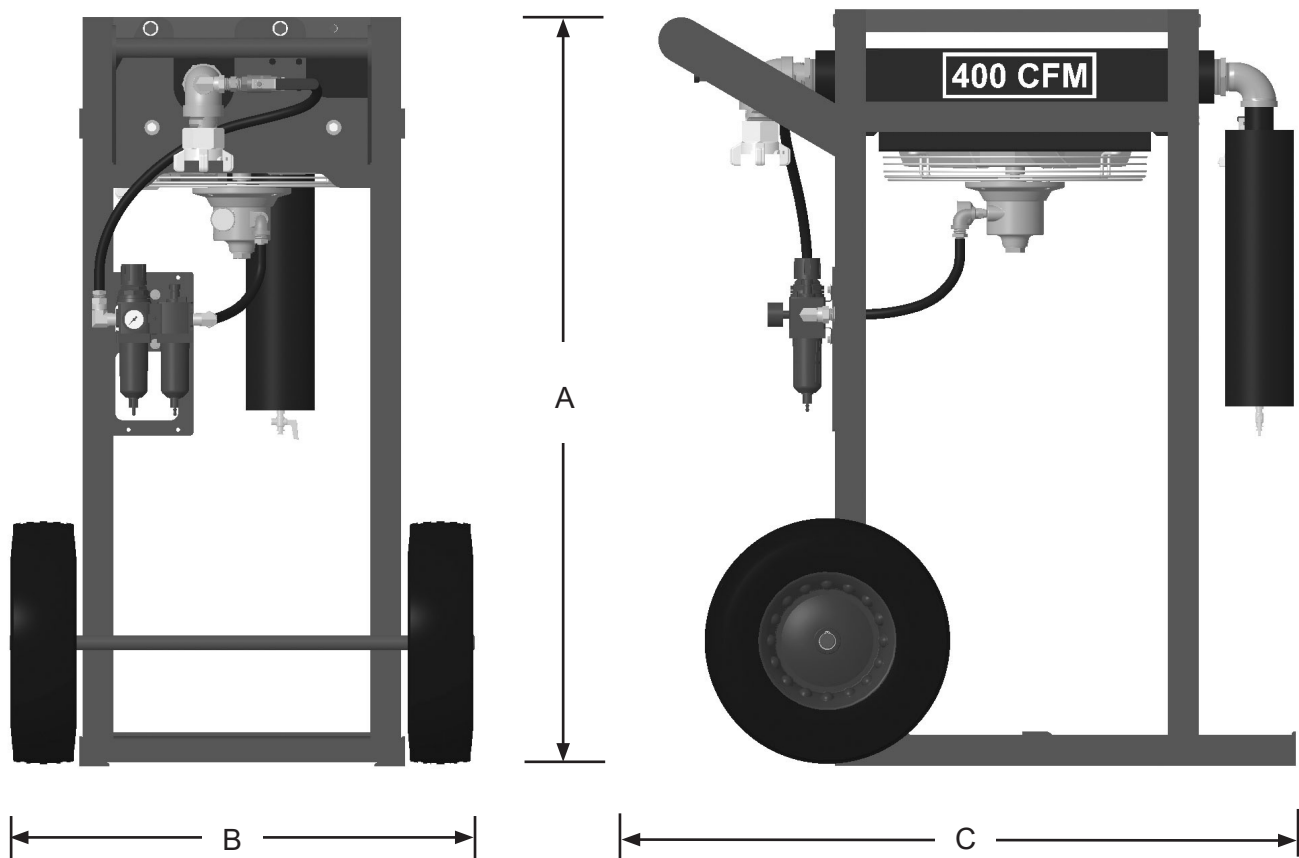
**Marco® 400 CFM Cart-Mounted  
Aftercooler – Electric**

## SPECIFICATIONS

**Lubrication:** SAE 10 oil or Air Tool Anti-freeze Lubricant

**Empty Weight:** 300 Pounds

**Overall Dimensions:** A: 49 1/4"  
B: 30 1/2"  
C: 42 1/2"



**Pneumatic model shown, Electric model has same dimensions.**

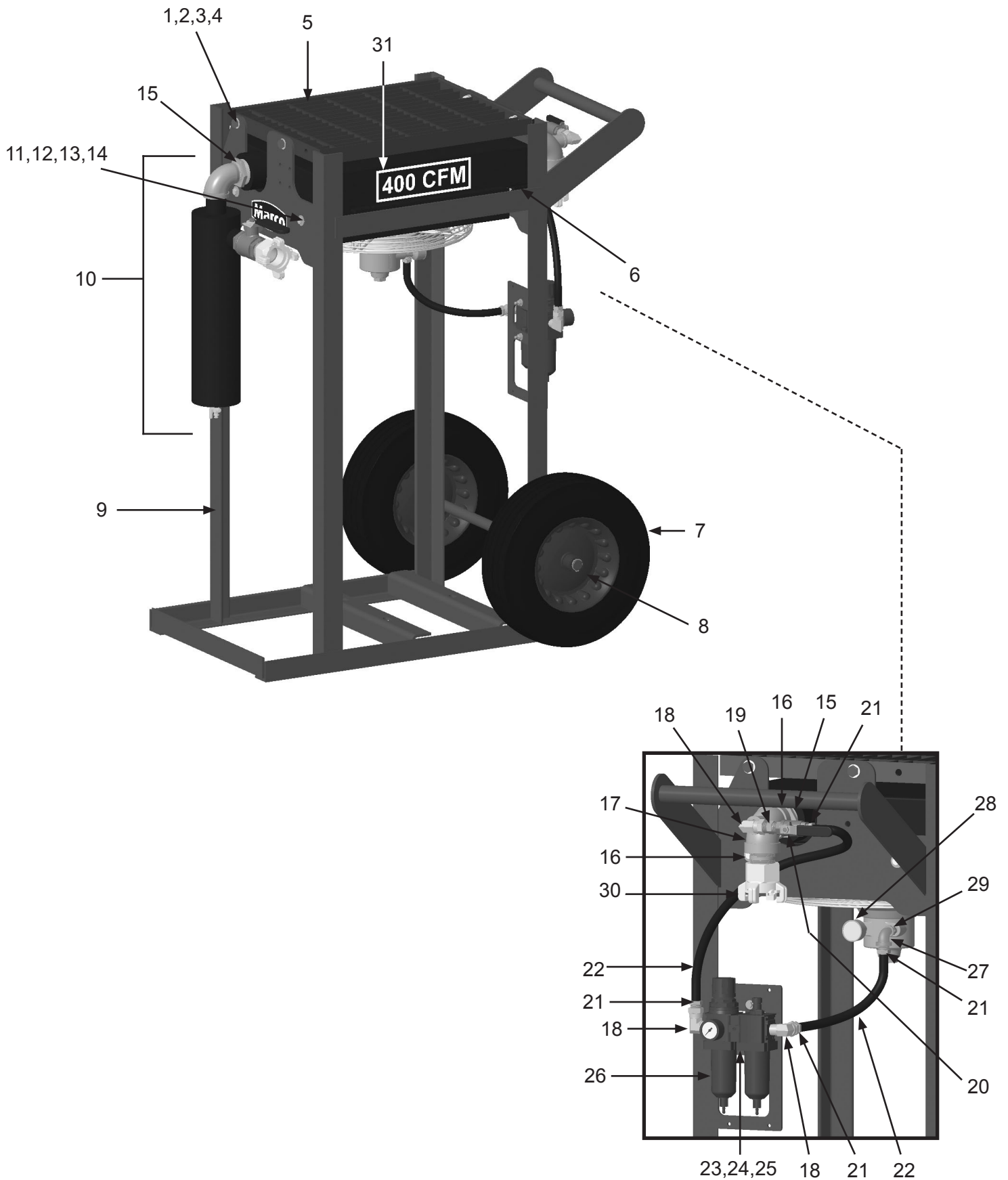
## PART NUMBERS AND SCHEMATICS

### Marco® 400 CFM Cart Mounted Aftercooler—Pneumatic

Item #	Part #	Description
<b>Fig. 1</b>		
—	<b>10101731</b>	<b>Marco® 400 CFM Cart-Mounted Aftercooler—Pneumatic—Complete</b>
1	10101943	1/2-13 x 1-3/4" Hex Bolt <i>(Four Required)</i>
2	10100674	1/2" Flat Washer <i>(Eight Required)</i>
3	10100675	1/2" Split Lock Washer <i>(Four Required)</i>
4	10101941	1/2-13 Hex Nut <i>(Four Required)</i>
5	10101271	400 CFM Aftercooler Protective Grate
6	10TTAHP4005	400 CFM Aftercooler - Pneumatic - Complete <i>(see Fig. 3)</i>
7	1006064	Wheel <i>(Two Required)</i>
8	1006205	Wheel Clip <i>(Four Required)</i>
9	10108972	Frame
10	—	1-1/2" Extractor Moisture Separator Assembly <i>(See Fig. 6)</i>
11	10101059	3/8-16 x 1-1/4" Hex Bolt <i>(Four Required)</i>
12	10101942	3/8" Flat Washer <i>(Eight Required)</i>
13	10L805015	3/8" Lock Washer <i>(Four Required)</i>
14	10101938	3/8-16 Hex Nut <i>(Four Required)</i>
15	1001868	2" x 1-1/2" NPT Bushing <i>(Two Required)</i>
16	1014015	1-1/2" NPT Close Nipple <i>(Two Required)</i>
17	1011828	1-1/2" NPT 90° Elbow with 1/2" Port
18	10SAP1290	1/2" NPT 90° Swivel <i>(Three Required)</i>
19	20100677	1/2" NPT Hex Nipple
20	10L363	1/2" NPT Full Port Ball Valve
21	10PAF050	1/2" Push-on Air Hose Fitting <i>(Four Required)</i>
22	10AH012	1/2" I.D. Air Hose <i>(per foot)</i>
23	10101939	1/4-20 Hex Nylon Lock Nut <i>(Two Required)</i>
24	1014017	1/4" Flat Washer <i>(Two Required)</i>
25	1012154	1/4-20 x 1" Hex Bolt <i>(Two Required)</i>
26	10101232	Air Regulator/Lubricator with Pressure Gauge <i>(See Fig. 5)</i>
27	10101185	1/2" x 1/4" Reducing Elbow
28	10101784	Muffler
29	1017019	1/4" NPT Hex Nipple
30	10ME4	1-1/2" NPT Four-Lug Air Fitting
31	1094535	400 CFM Decal <i>(Two Required)</i>
—	1091045	Hazard Identification Tag
—	106M096	Part Numbers and Schematics Guide – Marco® 400 CFM Cart-Mounted Aftercooler
—	1090096	Operator's Manual – Marco® 400 CFM Cart-Mounted Aftercooler

## PART NUMBERS AND SCHEMATICS

Figure 1: Marco® 400 CFM Cart Mounted Aftercooler—Pneumatic



## PART NUMBERS AND SCHEMATICS

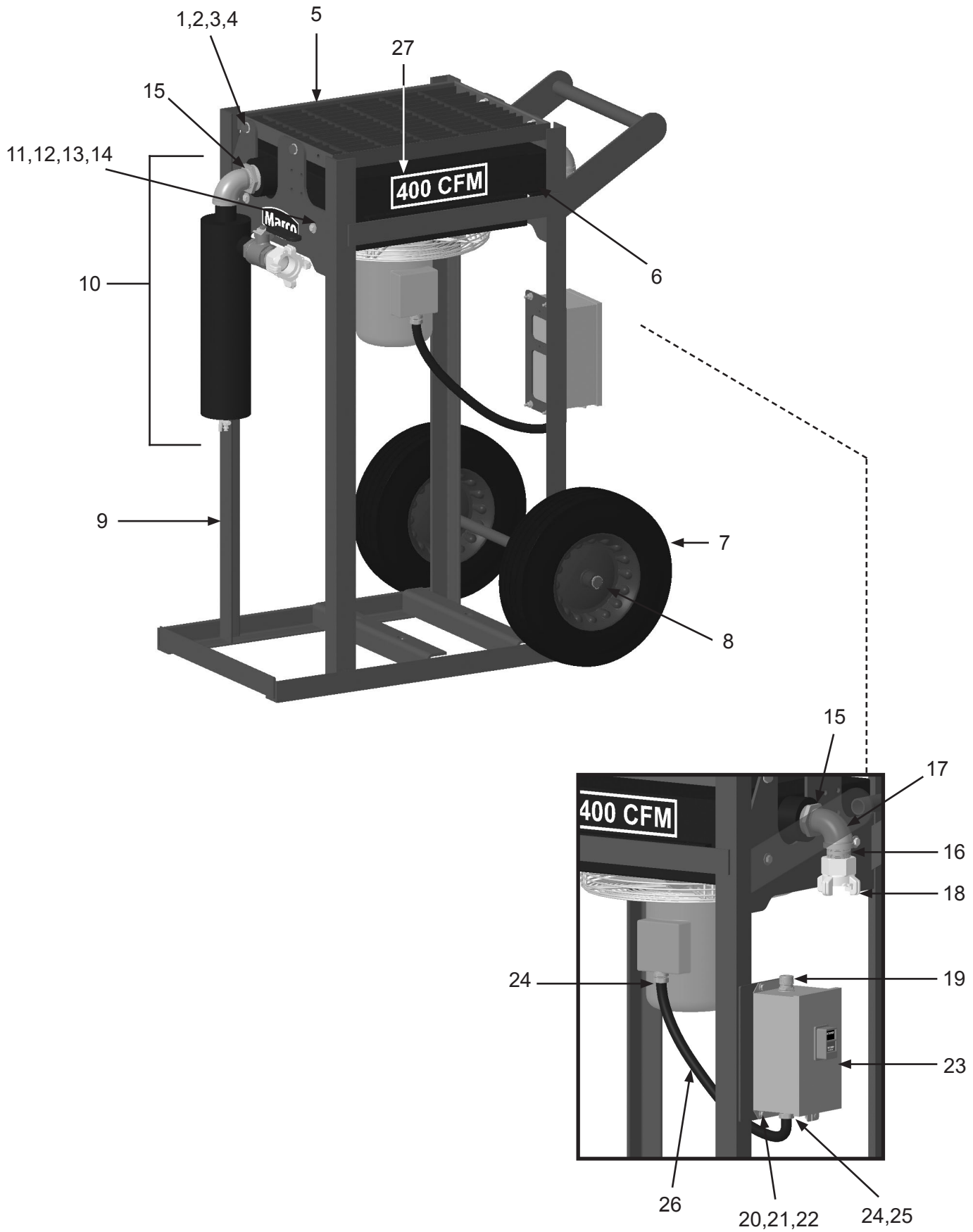
### Marco® 400 CFM Cart Mounted Aftercooler—Electric

Item #	Part #	Description
<b>Fig. 2</b>		
—	<b>10101732</b>	<b>Marco® 400 CFM Cart-Mounted Aftercooler—115 Volt Electric</b>
—	<b>10108810</b>	<b>Marco® 400 CFM Cart-Mounted Aftercooler—230 Volt Electric</b>
1	10101943	1/2-13 x 1-3/4" Hex Bolt <i>(Four Required)</i>
2	10100674	1/2" Flat Washer <i>(Eight Required)</i>
3	10100675	1/2" Split Lock Washer <i>(Four Required)</i>
4	10101941	1/2-13 Hex Nut <i>(Four Required)</i>
5	10101271	400 CFM Aftercooler Protective Grate
6	10TTAHP4002	400 CFM Aftercooler - Electric - Complete <i>(see Fig. 4)</i>
7	1006064	Wheel <i>(Two Required)</i>
8	1006205	Wheel Clip <i>(Four Required)</i>
9	10108972	Frame
10	—	1-1/2" Extractor Moisture Separator Assembly <i>(See Fig. 6)</i>
11	10101059	3/8-16 x 1-1/4" Hex Bolt <i>(Four Required)</i>
12	10101942	3/8" Flat Washer <i>(Eight Required)</i>
13	10L805015	3/8" Lock Washer <i>(Four Required)</i>
14	10101938	3/8-16 Hex Nut <i>(Four Required)</i>
15	1001868	2" x 1-1/2" NPT Bushing <i>(Two Required)</i>
16	1014015	1-1/2" NPT Close Nipple
17	1011839	1-1/2" NPT 90° Street Elbow
18	10ME4	1-1/2" NPT Four-Lug Air Fitting
19	20101299	3/4" NPT Cord Grip
20	1012154	1/4-20 x 1" Hex Bolt Zinc <i>(Four Required)</i>
21	1014017	1/4" Flat Washer Zinc <i>(Eight Required)</i>
22	10101939	1/4-20 Hex Nylon Lock Nut <i>(Four Required)</i>
23	10101760	Motor Starter – Single Phase
24	20RST50	1/2" Straight Conduit Connector <i>(Two Required)</i>
25	10108844	3/4" x 1/2" Reducing Washer <i>(Two Required)</i>
26	20RSEL050UL	1/2" UL/UA Seal-Tite Conduit <i>(Per Foot)</i>
27	1094535	400 CFM Decal <i>(Two Required)</i>
—	10108797	Thermal Unit - Full Load Current 11.5 - 12.8 Amps <i>(For use with 10101732)</i>
—	10108794	Thermal Unit - Full Load Current 5.74 - 6.35 Amps <i>(For use with 10108810)</i>
—	106M096	Part Numbers and Schematics Guide – Marco® 400 CFM Cart-Mounted Aftercooler
—	1090096	Operator's Manual – Marco® 400 CFM Cart-Mounted Aftercooler
—	1091045	Hazard Identification Tag



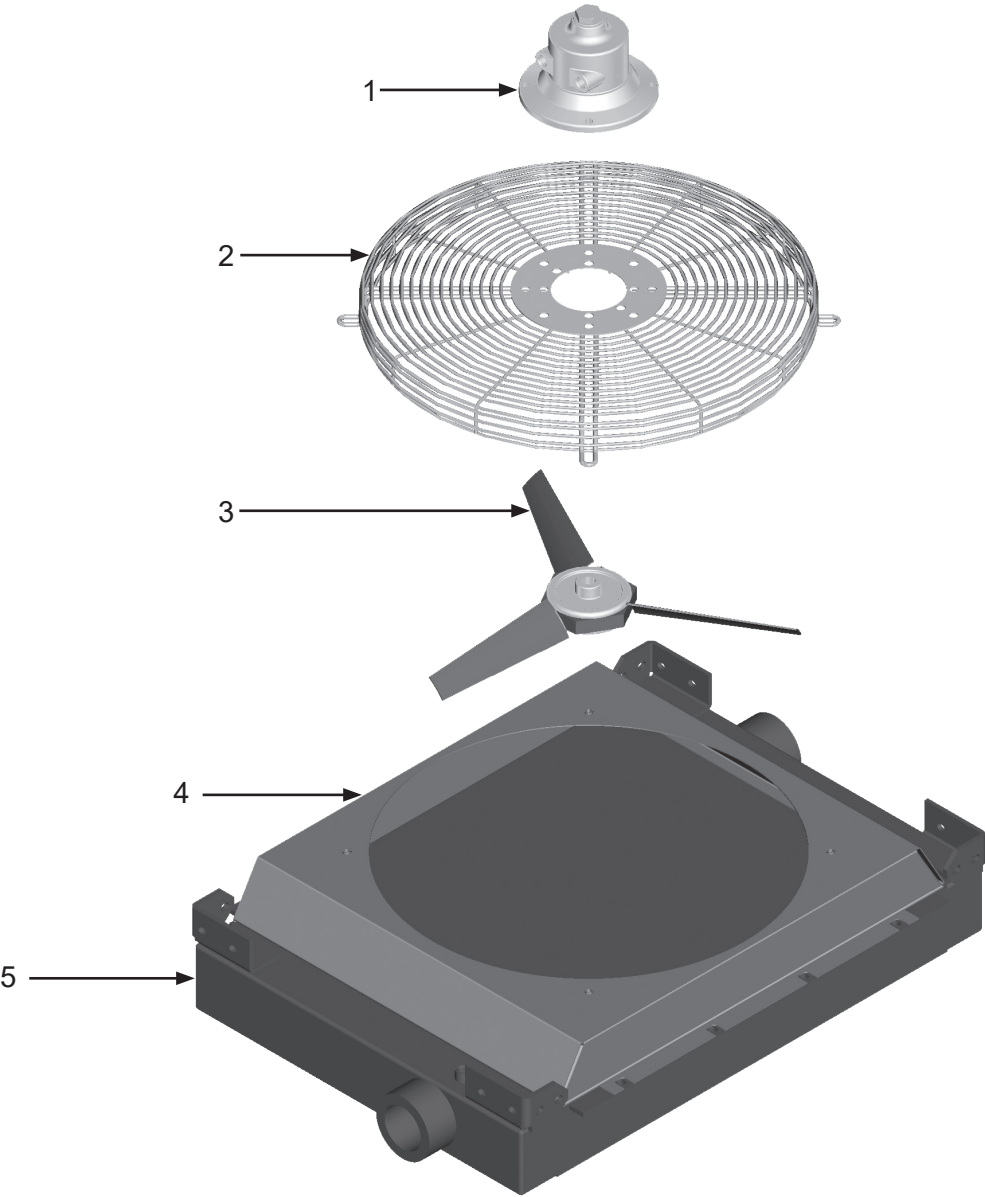
## PART NUMBERS AND SCHEMATICS

Figure 2: Marco® 400 CFM Cart Mounted Aftercooler—Electric



# PART NUMBERS AND SCHEMATICS

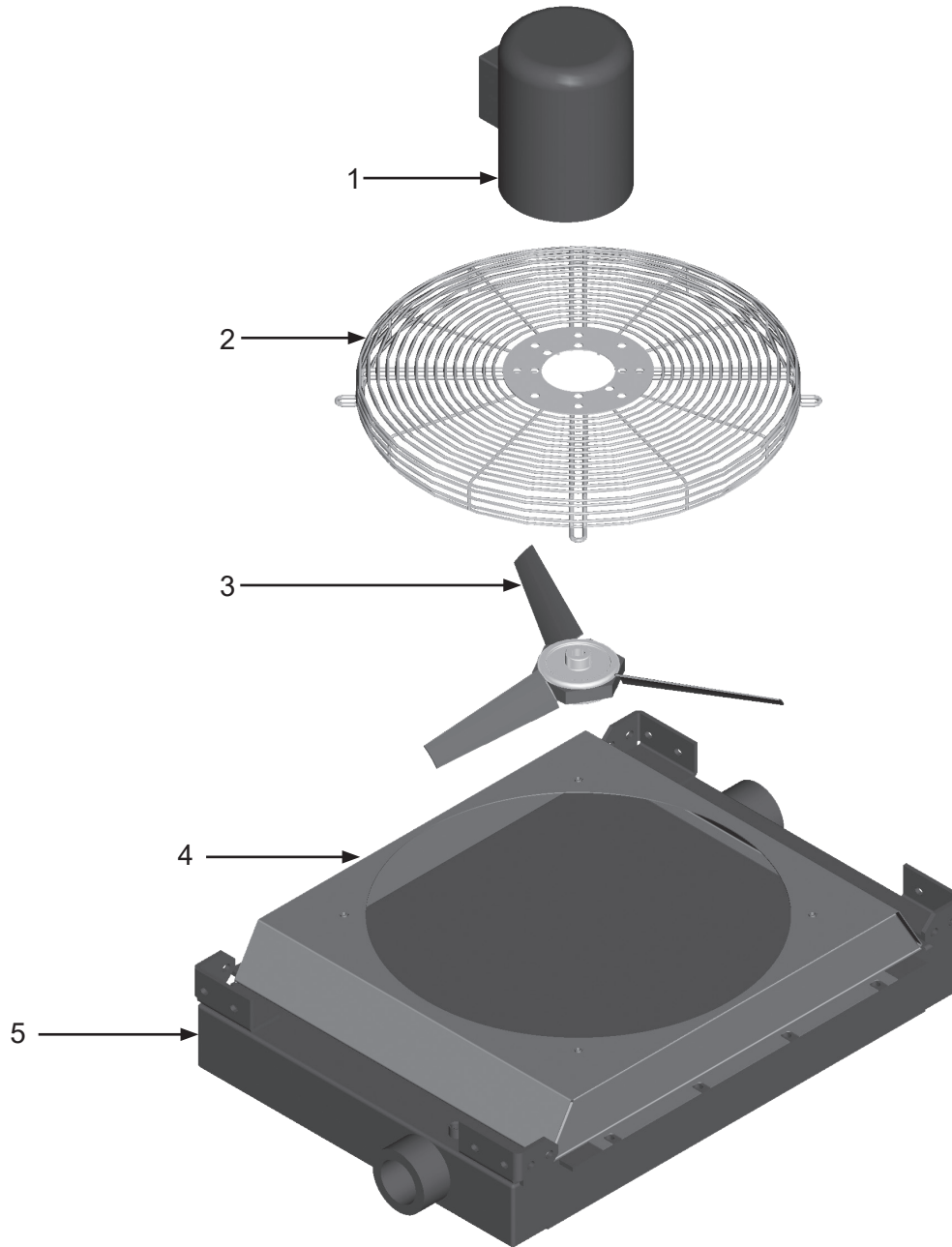
Figure 3: Aftercooler Assembly—Pneumatic



Item #	Part #	Description
<b>Fig. 3</b>		
	<b>10TTAHP4005</b>	<b>400 CFM Aftercooler—Pneumatic—Complete</b>
1	10101780	Air Motor
2	10101788	Fan Guard
3	10101787	Fan Blade Assembly
4	10103983	Fan Shroud
5	10101786	Aftercooler Core
—	10101784	Muffler for Air Motor
—	10101781	Air Motor Service Kit <i>Includes: Shaft Seal, Drive End Bearing, Dead End Bearing, Vanes (Quantity of Four), Push Pins (Quantity of Four), Vane Springs (Quantity of Four), Shim, End Cap Gasket, Muffler Cartridge, and Muffler Felt</i>

## PART NUMBERS AND SCHEMATICS

Figure 4: Aftercooler Assembly—Electric



Item #	Part #	Description
--------	--------	-------------

Fig. 4

	<b>10TTAHP4002</b>	<b>400 CFM Aftercooler—Electric—Complete</b>
--	--------------------	--

1	10101789	Electric Motor – (115 Volt to 208-230 Volt) – Single Phase
---	----------	--

2	10101788	Fan Guard
---	----------	-----------

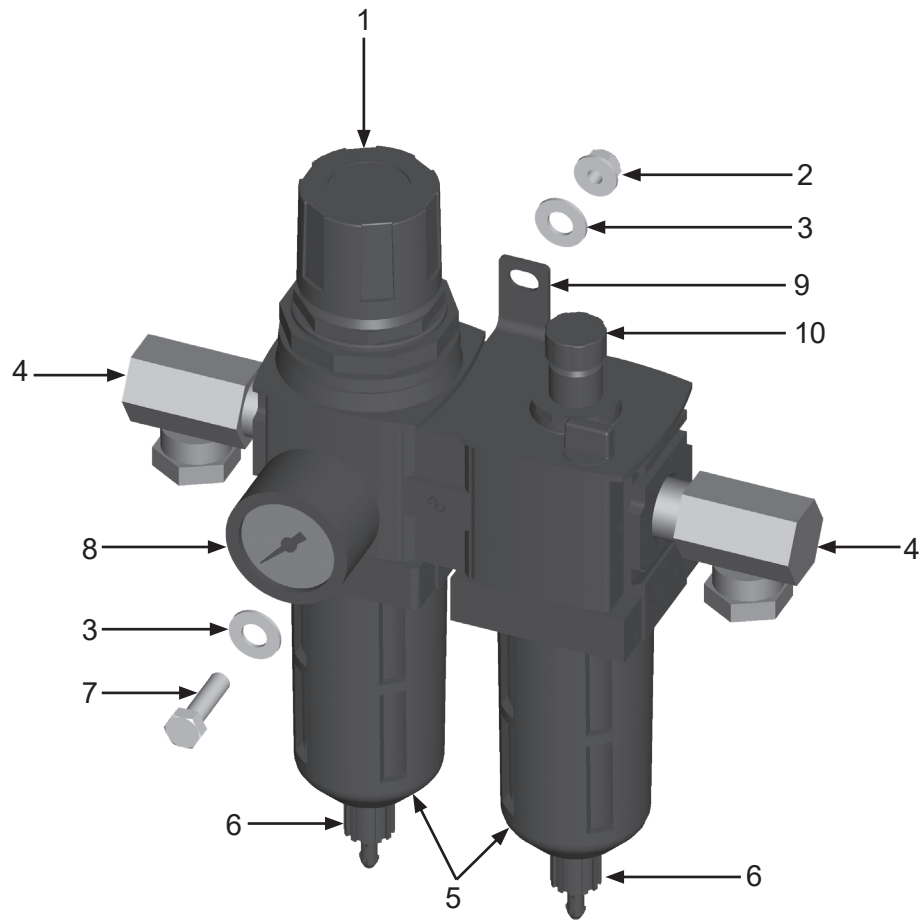
3	10101787	Fan Blade Assembly
---	----------	--------------------

4	10103983	Fan Shroud
---	----------	------------

5	10101786	Aftercooler Core
---	----------	------------------

## PART NUMBERS AND SCHEMATICS

Figure 5: Air Regulator/Lubricator



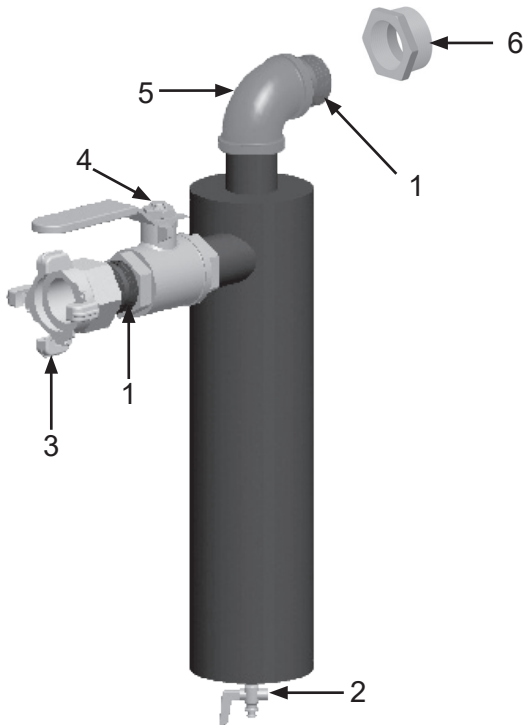
Item #	Part #	Description
--------	--------	-------------

Fig. 5

1	10101232	Filter/Regulator/Lubricator with Pressure Gauge
2	1012323	1/4" Nylon Insert Lock Nut ( <i>Two Required</i> )
3	1014017	1/4" Flat Washer ( <i>Four Required</i> )
4	10SAP1290	1/2" 90° Swivel ( <i>Two Required</i> )
5	10101235 10109913	Polycarbonate Bowl - Wilkerson ( <i>Two Required</i> ) Bowl With O-Ring - Midwest Control ( <i>Two Required</i> )
6	10101234 10109914	Manual Drain - Wilkerson Manual Drain - Midwest Control
7	1012154	1/4-20 X 1" Bolt ( <i>Two Required</i> )
8	1028606	Pressure Gauge – 0-160 PSI 1/4" – Back Mount
9	10109907	Quick Clamp with Bracket - Midwest Control
10	10109912	Sight Dome - Midwest Control
–	10101233 10109915	Filter Element - Wilkerson Filter Element 40 Micron - Midwest Control
–	1070517	Pneumatic Air Tool Oil–32 oz. bottle

## PART NUMBERS AND SCHEMATICS

**Figure 6: 1-1/2" Junior Extractor Moisture Separator Assembly**



Item #	Part #	Description
--------	--------	-------------

**Fig. 6**

–	<b>10101313</b>	<b>Marco® 1-1/2" Extractor Moisture Separator</b> <i>Includes Item #: 1, 2, 3, 4, and 5</i>
---	-----------------	--

1	1014015	1-1/2" NPT Close Nipple ( <i>Two Required</i> )
---	---------	---

2	1012101	1/4" NPT Brass Petcock
---	---------	------------------------

3	10ME4	4-Lug Air Hose Fitting – 1-1/2" NPT (F)
---	-------	---

4	1011603	1-1/2" NPT Full Port Brass Ball Valve
---	---------	---------------------------------------

5	1011842	1-1/2" NPT 90° Elbow
---	---------	----------------------

6	1001868	2" x 1-1/2" Hex Bushing
---	---------	-------------------------

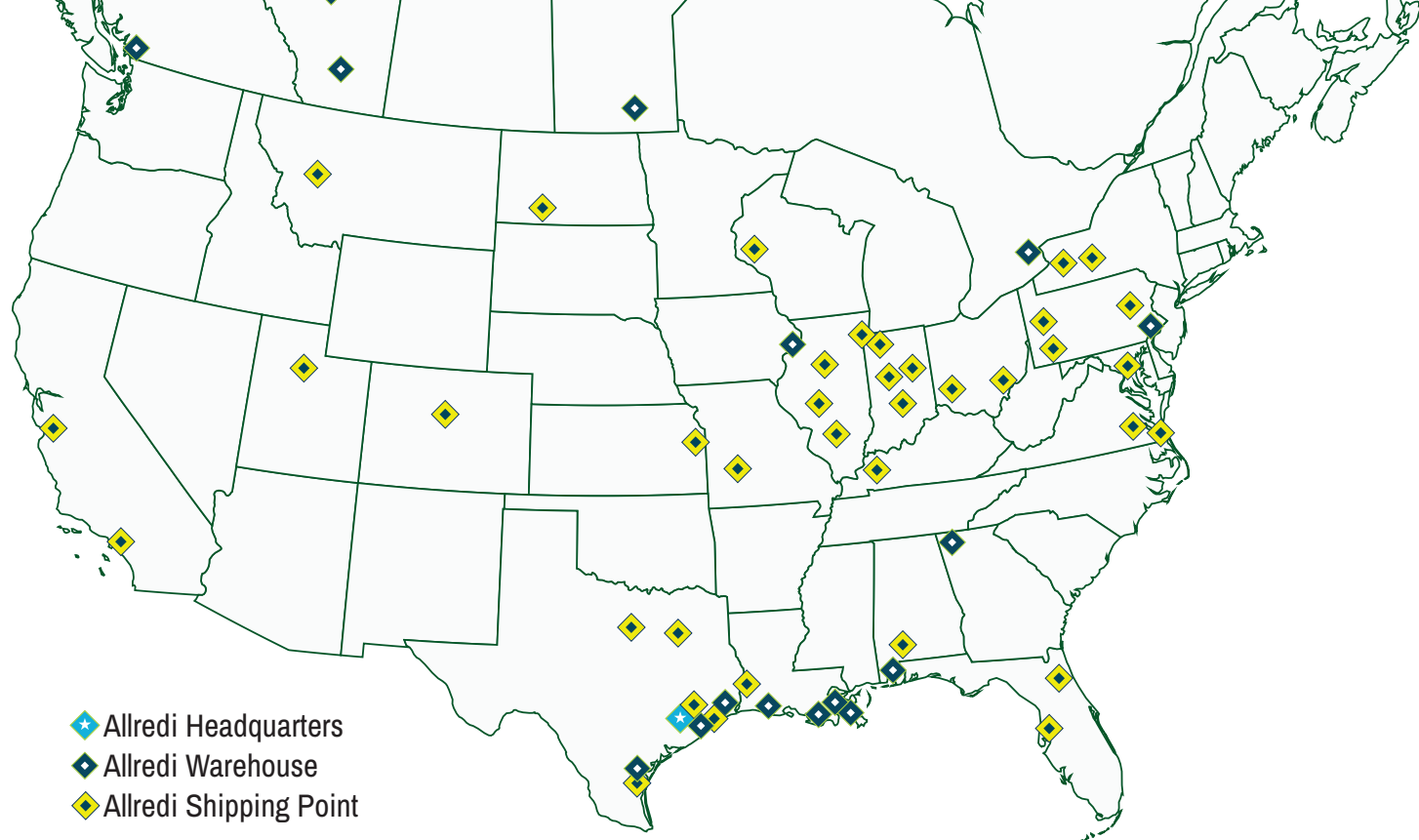
—	106M349	Part Numbers and Schematics Guide – Marco® Extractor Moisture Separators
---	---------	--

# OPTIONAL ACCESSORIES

Part Numbers	LUBRICATION
1070517	Pneumatic Air Tool Oil - 32 oz. bottle

## MAINTENANCE NOTES

[illegible]



# ALLREDI THERE

Serving these industries: Bridge, Pipeline, Tank & Tower, Concrete Services, Rail, Shipyard & Marine, Pools & Fountains, and Foundry

## UNITED STATES

**Pasadena, TX** (*Headquarters*)  
844.361.7038

**Beaumont, TX**  
409.722.1284

**Bristol, PA**  
215.826.8080

**Corpus Christi, TX**  
361.887.2038

**Davenport, IA**  
563.324.2519

**Deer Park, TX**  
(*Service & Rental Location*)  
281.930.0905

**Duluth, GA**  
800.535.4564

**Gonzales, LA**  
225.647.7575

**Harvey, LA**  
504.367.8090

**Houma, LA**  
985.580.4273

**Lafayette, LA**  
337.267.1440

**Theodore, AL**  
251.338.7525

## CANADA

**Calgary, Alberta**  
403.279.1924

**Coquitlam, BC**  
604.464.6979

**Edmonton, Alberta**  
780.468.2588 (Manus)  
780.425.5510 (Mod-U-Blast)

**Hamilton, Ontario**  
905.527.6000 / 888.794.5665

**Mississauga, Ontario**  
905.890.5837

**Winnipeg, Manitoba**  
204.256.3324

**800.BLAST.IT / WWW.ALLREDI-US.COM**

Allredi™ and Marco® are registered trademarks of Allredi, LLC.  
All other brand names or marks are used for identification purposes and are trademarks of their respective owners.



Literature #106M096\_1/19/2024