



MARCO® 400 CFM AIR DRYER



PART NUMBERS AND SCHEMATICS GUIDE

Company Profile

Allredi was formed in the early 2020, when two of the largest distributors in the blasting, coating, safety, and environmental industry, APE Companies and Marco Group International, joined forces. While the qualities both companies are known for have not changed, a lot about our business is new. New abilities. New agilities. New ways to help you win. This calls for a new name, Allredi.

This name exemplifies what we have become. It is completely oriented to the needs of our customers. To your needs. It says that when you call us for anything – products, service, expert advice, anything – you can consider it done. Or even better, Allredi done.

We are your right-now supplier. From skills to SKUs, we deliver the goods fast. So you can be more agile every minute, every day. This is who we are. This is what our new name means. Go ahead and expect excellence, because we're bringing it.

Our Mission and Vision

To be the industry's preferred partner in surface preparation solutions through unrivaled technical expertise, customer experience, product availability, and tailored service offerings.

The Allredi Difference

- **Industry Experience** – With Allredi on your team, you have access to expertise which can only come from decades of industry leadership. We have organized our engineering department, production specialists, customer operations, and safety support into a “Center of Competence.” As an Allredi customer, you have access to hundreds of years of cumulative experience related to your operations.
- **Manufacturing Excellence** – Allredi is a U.S. based manufacturer of equipment for the Surface Preparation and Protective Coatings industries. Allredi's engineers benchmark the industry to ensure that we design and manufacture superior products that set the “Gold Standard” for performance, safety, and quality.
- **Legendary Customer Service** – Allredi's legendary customer service team is staffed by friendly, highly-trained individuals who are focused on providing the highest level of product support, order accuracy, and customer satisfaction.
- **Product Availability** – We stock over 10,000 SKU's and have over 45 shipping locations to serve North American and International markets for all major brands of blasting, coating, environmental, and safety equipment. Allredi is your right-now supplier, so you can keep your projects moving. From our foundation of strong relationships, we have built a nationwide network that puts vast inventory and ready service close to our customers. We provide advanced expertise, and we deliver the goods fast – so you can easily access the products and services you need to me more agile every minute, every day.
- **Technology Leadership** – Our website provides: Operator's Manuals, Part Numbers and Schematics Guides, SDS information, and key product features and specifications, providing access to information 24/7.

TABLE OF CONTENTS

Company Profile	2
Table of Contents	3
Part Numbers	4
Specifications	5
Part Numbers & Schematics	6-19
Marco® 400 CFM Air Dryer—Pneumatic.	6-7
Marco® 400 CFM Air Dryer—Electric	8-9
Aftercooler Assembly—Pneumatic	10
Aftercooler Assembly—Electric	11
Transfer Hose Assembly.	12
Inlet Filter Assembly	13
Air Regulator/Lubricator	14
Inspection Door Assembly	15
Outlet Filter	16
Optional Accessories	17-20
Desiccant Tablets	17
Spherical Tower Packing	17
Airflow Shutoff Kits – Lug Fittings.	18
Airflow Shutoff Kits – Hammerlock Fittings.	18
Inlet/Outlet Bushing	19
Pressure Relief Valves	19
Pipe Plugs	20
Lubrication	20
Maintenance Notes	21-23

PART NUMBERS

Part Numbers	Marco® 400 CFM AIR DRYER								
	Inlet			Outlet			Power Source	Filter, Regulator, and Lubricator	Electric Starter Box
	Inlet Quantity	Inlet Size	Fittings	Outlet Quantity	Outlet Size	Fittings			
10109755	1	3"	Not Included	5	(2) 3", (1) 1-1/4", (2) 1"	Not Included	Pneumatic	Included	Not Included
10110296	1	3"	Not Included	5	(2) 3", (1) 1-1/4", (2) 1"	Not Included	115-Volt AC	Not Included	Included

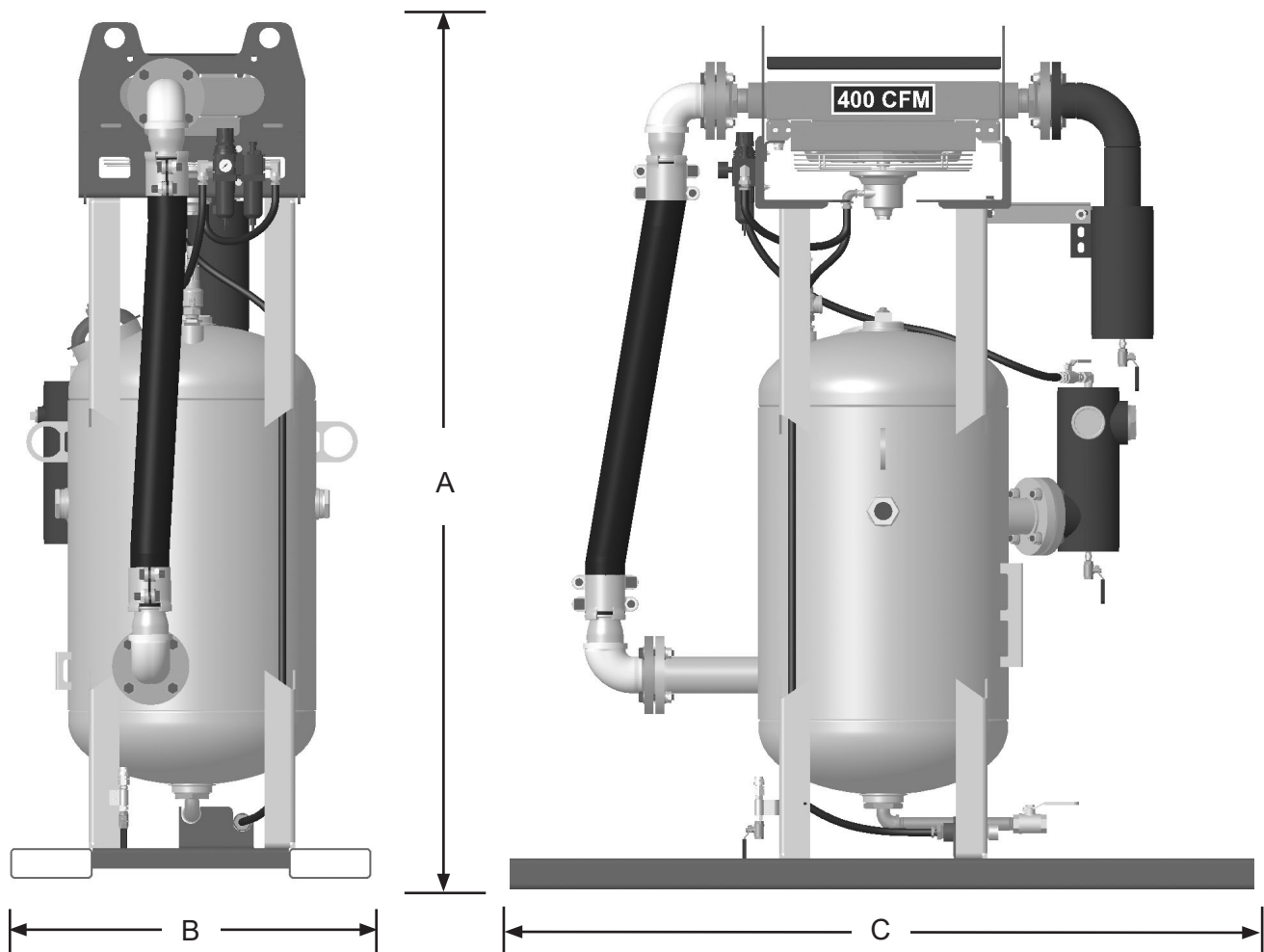
Dessicant tablets not included with Marco® 400 CFM Air Dryers

SPECIFICATIONS

Lubrication: SAE 10 oil or Air Tool Anti-freeze Lubricant

Empty Weight: 900 Pounds

Overall Dimensions: A: 83"
B: 35"
C: 72"



Pneumatic model shown.

PART NUMBERS & SCHEMATICS

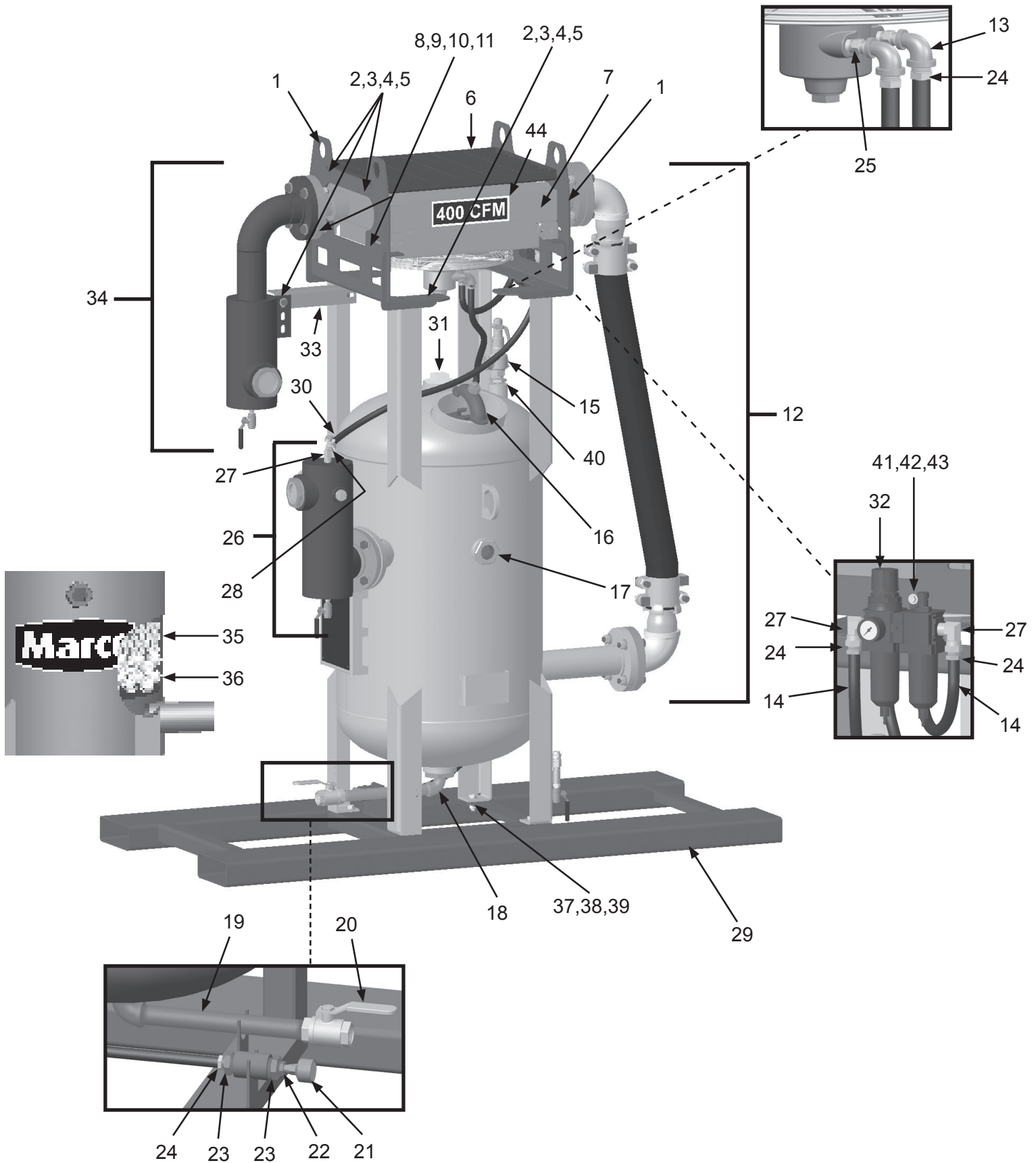
Marco® 400 CFM Air Dryer—Pneumatic

Item #	Part #	Description
Fig. 1		
—	10109755	Marco® 400 CFM Air Dryer – Pneumatic
1	10101176	400-1600 CFM Heat Exchanger Mounting Bracket <i>(Two Required)</i>
2	10101943	1/2-13 x 1-3/4" Hex Bolt Galvanized <i>(10 Required)</i>
3	10100674	1/2" Flat Washer Galvanized <i>(20 Required)</i>
4	10100675	1/2" Split Lock Washer Galvanized <i>(10 Required)</i>
5	10101941	1/2-13 Hex Nut Galvanized <i>(10 Required)</i>
6	10101179	Heat Exchanger Protective Grate
7	10TTAHP4005	400 CFM Aftercooler - Pneumatic (See Fig. 2)
8	10101059	3/8-16 x 1-1/4" Bolt Galvanized <i>(Four Required)</i>
9	10101942	3/8" Flat Washer Galvanized <i>(Eight Required)</i>
10	10L805015	3/8" Lock Washer Galvanized <i>(Four Required)</i>
11	10101938	3/8 -16 Hex Nut Galvanized <i>(Four Required)</i>
12	—	Transfer Hose Assembly (See Fig. 3)
13	10101185	1/2" x 1/4" 90° Reducing Elbow <i>(Two Required)</i>
14	10AH012	1/2" I.D. Air Hose <i>(Per Foot)</i>
15	10E1POPOFF150	Pop Off Valve
16	—	Inspection Door Assembly (See Fig. 6)
17	10101688	2" NPT Sight Glass
18	1011801	1" NPT Street Elbow
19	10101064	1" X 12" NPT Pipe Nipple
20	1011601	1" NPT Full Port Ball Valve
21	10101784	Aftercooler Exhaust Muffler – 250 CFM–750 CFM
22	1011818	1/2" x 1/4" Galvanized Bushing
23	1011812	1" Male x 1/2" Female Bushing

Item #	Part #	Description
24	10PAF050	1/2" Push on Air Hose Fitting <i>(Six Required)</i>
25	1017019	1/4" x 1/4" Hex Nipple <i>(Two Required)</i>
26	—	Outlet Filter Assembly (See Fig. 7)
27	10SAP1290	1/2" 90° Swivel <i>(Three Required)</i>
28	20100677	1/2" NPT Hex Nipple
29	10101024	Skid Weldment
30	10L363	1/2" NPT Full Port Ball Valve
31	10101034	3" NPT Galvanized Pipe Plug
32	10105890	Filter/Regulator/Lubricator with Pressure Gauge (See Fig. 5)
33	10101170	Moisture Separator Brace
34	—	Inlet Filter Assembly (See Fig. 4)
35	—	Desiccant Tablets - <i>Not Included</i> (See Fig. 8)
36	10103922	Spherical Tower Packing (See Fig. 8)
37	10107495	1/2-13 x 1-5/8" Grade 8 Hex Bolt Zinc <i>(Four Required)</i>
38	10107496	1/2-13 Grade 8 Lock Nut Zinc <i>(Four Required)</i>
39	10104711	1/2" Grade 8 Flat Washer Zinc <i>(Eight Required)</i>
40	1012157	1-1/4" M x 1" F Bushing
41	1012154	1/4-20 x 1" Hex Bolt <i>(Two Required)</i>
42	10101939	1/4-20 Stainless Steel Lock Nut with Nylon Insert <i>(Two Required)</i>
43	101407	1/4" Flat Washer <i>(Four Required)</i>
44	1094535	400 CFM Product Sticker
—	1070517	Pneumatic Tool Oil — 32 oz.
—	106M182	Part Numbers and Schematics Guide Marco® 400 CFM Air Dryer
—	1091182	Operator's Manual – Marco® 400 CFM Dryer

PART NUMBERS AND SCHEMATICS

Figure 1: Marco® 400 CFM Air Dryer—Pneumatic



PART NUMBERS & SCHEMATICS

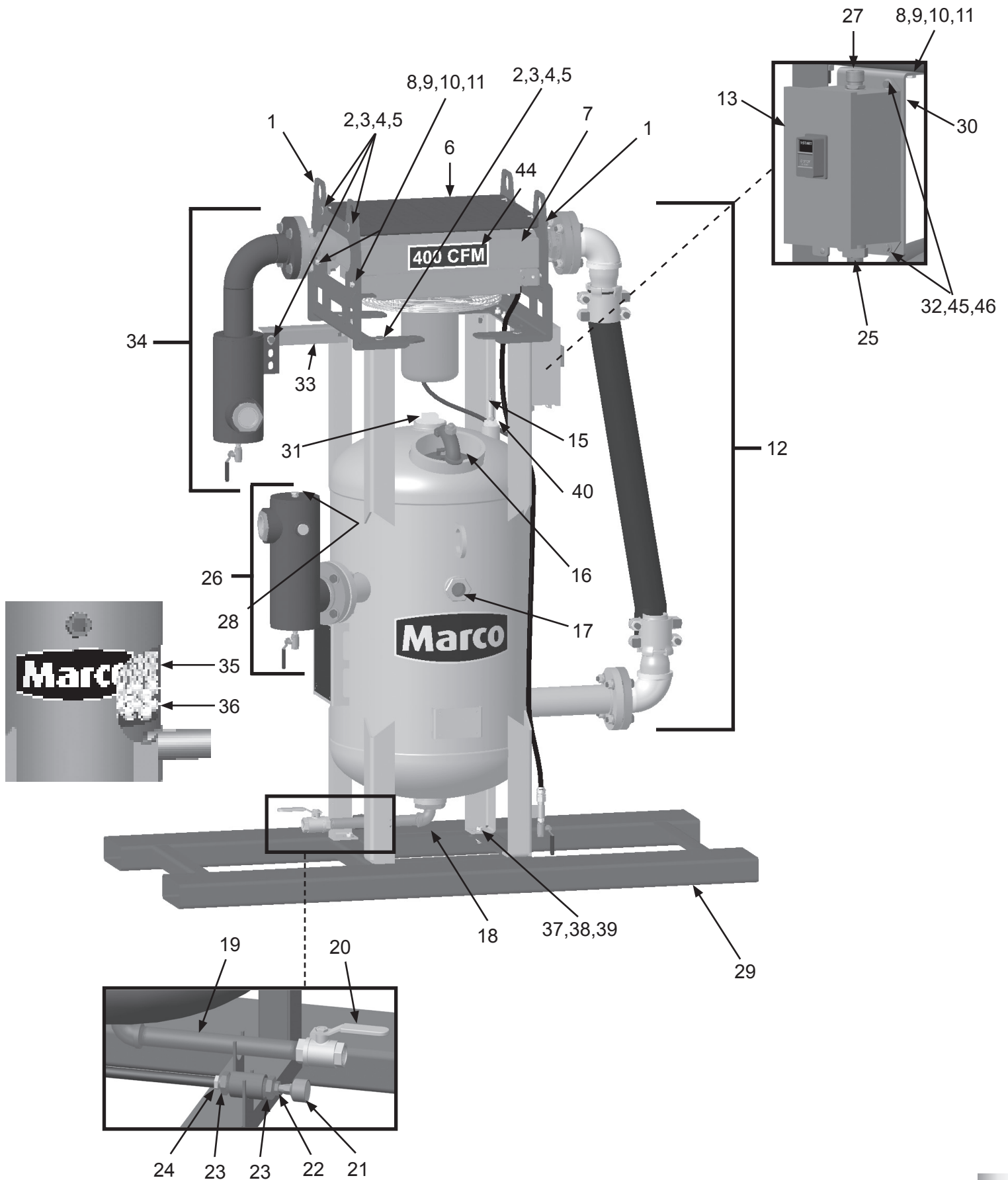
Marco® 400 CFM Air Dryer—115 Volt Electric

Item #	Part #	Description
Fig. 1		
—	10110296	Marco® 400 CFM Air Dryer – 115-Volt AC
1	10101176	400-1600 CFM Heat Exchanger Mounting Bracket <i>(Two Required)</i>
2	10101943	1/2-13 x 1-3/4" Hex Bolt Galvanized <i>(10 Required)</i>
3	10100674	1/2" Flat Washer Galvanized <i>(20 Required)</i>
4	10100675	1/2" Split Lock Washer Galvanized <i>(10 Required)</i>
5	10101941	1/2-13 Hex Nut Galvanized <i>(10 Required)</i>
6	10101179	Heat Exchanger Protective Grate
7	10TTAHP4002	400 CFM Aftercooler - Electric (See Fig. 4)
8	10101059	3/8-16 x 1-1/4" Bolt Galvanized <i>(Four Required)</i>
9	10101942	3/8" Flat Washer Galvanized <i>(Eight Required)</i>
10	10L805015	3/8" Lock Washer Galvanized <i>(Four Required)</i>
11	10101938	3/8 -16 Hex Nut Galvanized <i>(Four Required)</i>
12	—	Transfer Hose Assembly <i>(See Fig. 5)</i>
13	10108792	1 Phase Electric Motor Starter - 3 HP to 5 HP
14	10AH012	1/2" I.D. Air Hose <i>(Per Foot)</i>
15	10E1POPOFF150	Pop Off Valve
16	—	Inspection Door Assembly <i>(See Fig. 8)</i>
17	10101688	2" NPT Sight Glass
18	1011801	1" NPT Street Elbow
19	10101064	1" X 12" NPT Pipe Nipple
20	1011601	1" NPT Full Port Ball Valve
21	10101784	Aftercooler Exhaust Muffler – 250 CFM–750 CFM
22	1011818	1/2" x 1/4" Galvanized Bushing
23	1011812	1" Male x 1/2" Female Bushing
24	10PAF050	1/2" Push On Air Hose Fitting

Item #	Part #	Description
25	10103303	3/4" Conduit Hub <i>(Two Required)</i>
26	—	Outlet Filter Assembly <i>(See Fig. 9)</i>
27	20101197	3/4" NPT Cord Grip
28	20100677	1/2" NPT Hex Nipple
29	10101024	Skid Weldment
30	10108830	Motor Starter Bracket
31	10101034	3" NPT Galvanized Pipe Plug
32	1012154	1/4-20 x 1" Hex Bolt Zinc
33	10101170	Moisture Separator Brace
34	—	Inlet Filter Assembly <i>(See Fig. 6)</i>
35	—	Desiccant Tablets - <i>Not Included (See Fig. 10)</i>
36	10103922	Spherical Tower Packing <i>(See Fig. 10)</i>
37	10107495	1/2-13 x 1-5/8" Grade 8 Hex Bolt Zinc <i>(Four Required)</i>
38	10107496	1/2-13 Grade 8 Lock Nut Zinc <i>(Four Required)</i>
39	10104711	1/2" Grade 8 Flat Washer Zinc <i>(Eight Required)</i>
40	1012157	1-1/4" M x 1" F Bushing
41	1012154	1/4-20 x 1" Hex Bolt
42	10101939	1/4-20 Stainless Steel Lock Nut with Nylon Insert
43	101407	1/4" Flat Washer <i>(Three Required)</i>
44	1094535	400 CFM Product Sticker
45	1014017	1/4" Flat Washer Zinc <i>(Eight Required)</i>
46	1012323	1/4"-20 Lock Nut Zinc <i>(Four Required)</i>
—	1070517	Pneumatic Tool Oil — 32 oz.
—	106M182	Part Numbers and Schematics Guide Marco® 400 CFM Air Dryer
—	1091182	Operator's Manual – Marco® 400 CFM Dryer

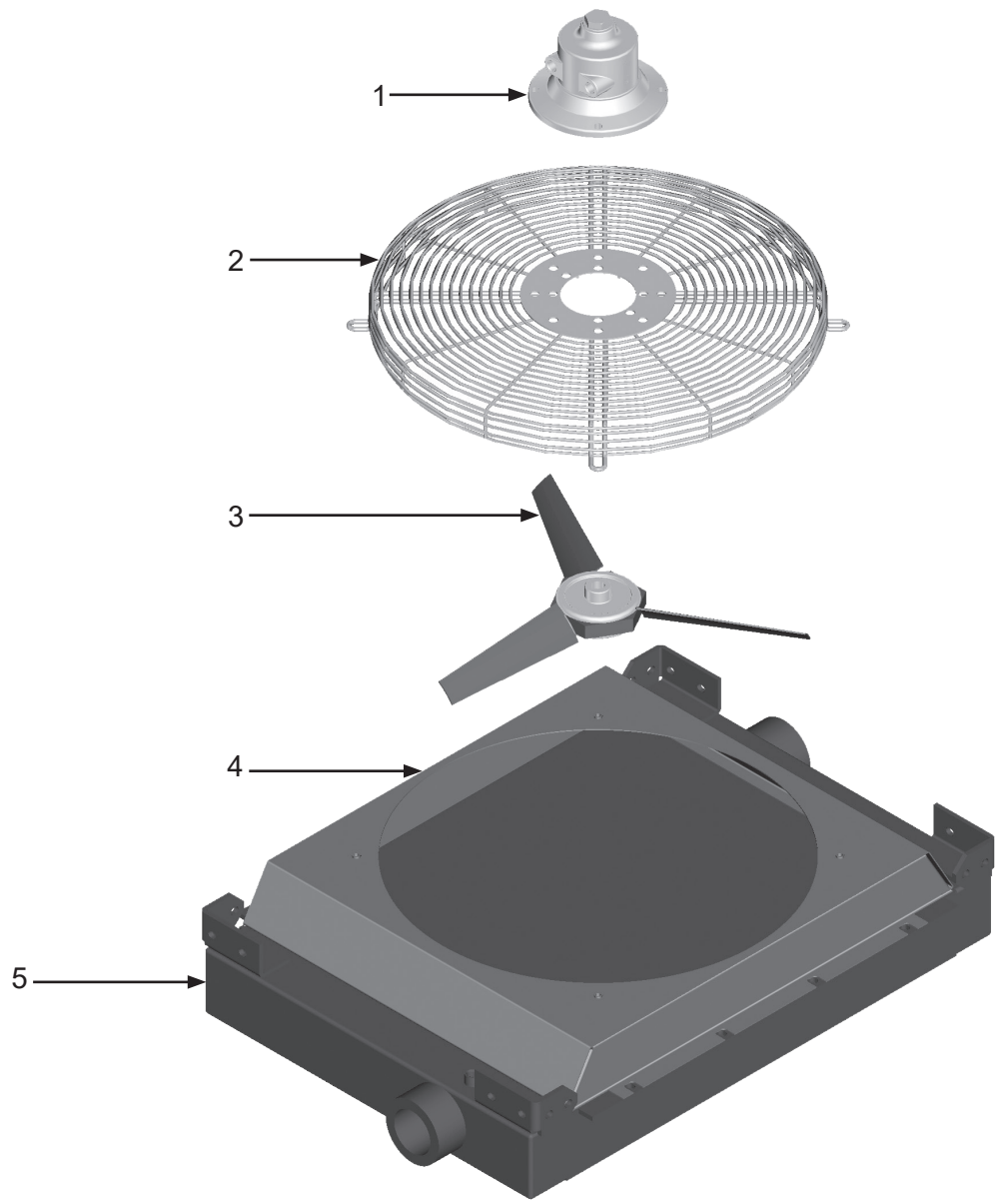
PART NUMBERS AND SCHEMATICS

Figure 2: Marco® 400 CFM Air Dryer—115 Volt Electric



PART NUMBERS AND SCHEMATICS

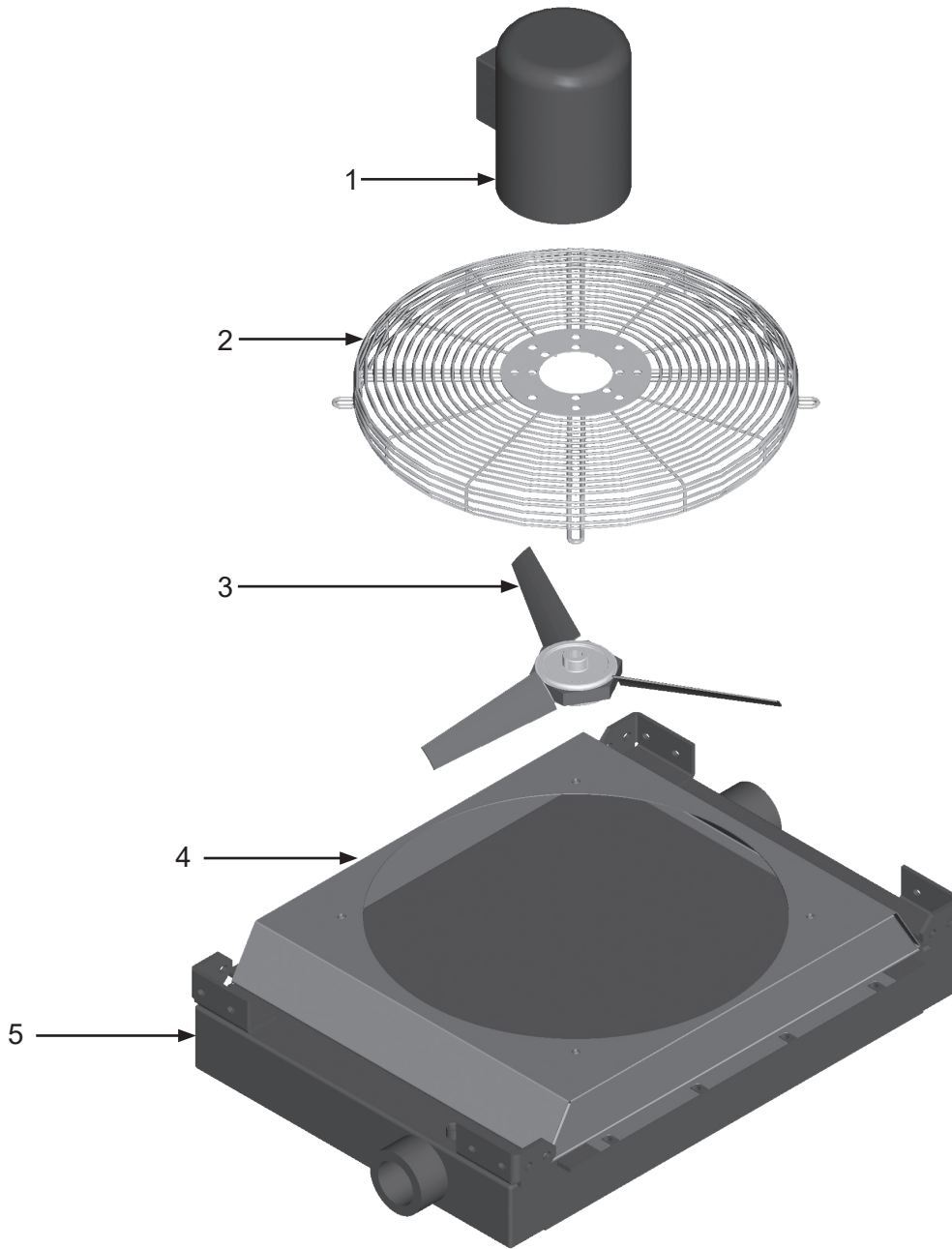
Figure 3: Aftercooler Assembly—Pneumatic



Item #	Part #	Description
Fig. 3		
—	10TTAHP4005	400 CFM Aftercooler—Pneumatic—Complete
1	10101780	Air Motor
2	10101788	Fan Guard
3	10101787	Fan Blade Assembly (Includes Blades and Hub)
4	10103983	Aftercooler Shroud
5	10101786	Aftercooler Core
—	10101781	Air Motor Service Kit (Includes: shaft seal, drive end bearing, dead end bearing, four vanes, four push pins, four vane springs, shim, end cap gasket, muffler cartridge, and muffler felt)

PART NUMBERS AND SCHEMATICS

Figure 4: Aftercooler Assembly—Electric



Item #	Part #	Description
--------	--------	-------------

Fig. 4

	10TTAHP4002	400 CFM Aftercooler—Electric—Complete
--	--------------------	--

1	10101789	Electric Motor – (115 Volt to 208-230 Volt) – Single Phase
---	----------	--

2	10101788	Fan Guard
---	----------	-----------

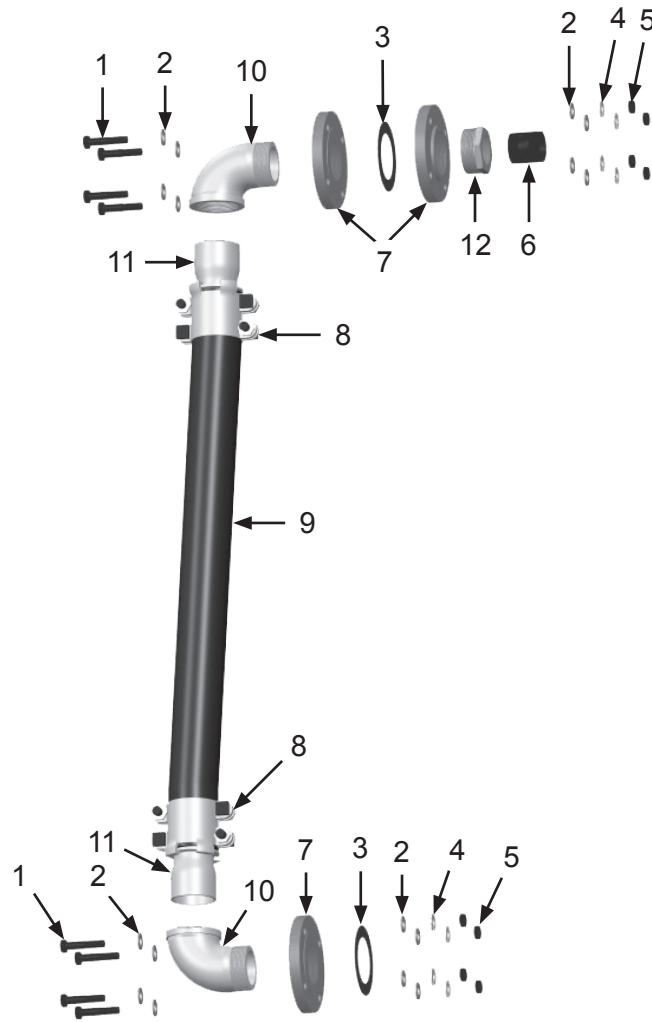
3	10101787	Fan Blade Assembly
---	----------	--------------------

4	10103983	Fan Shroud
---	----------	------------

5	10101786	Aftercooler Core
---	----------	------------------

PART NUMBERS AND SCHEMATICS

Figure 5: Transfer Hose Assembly



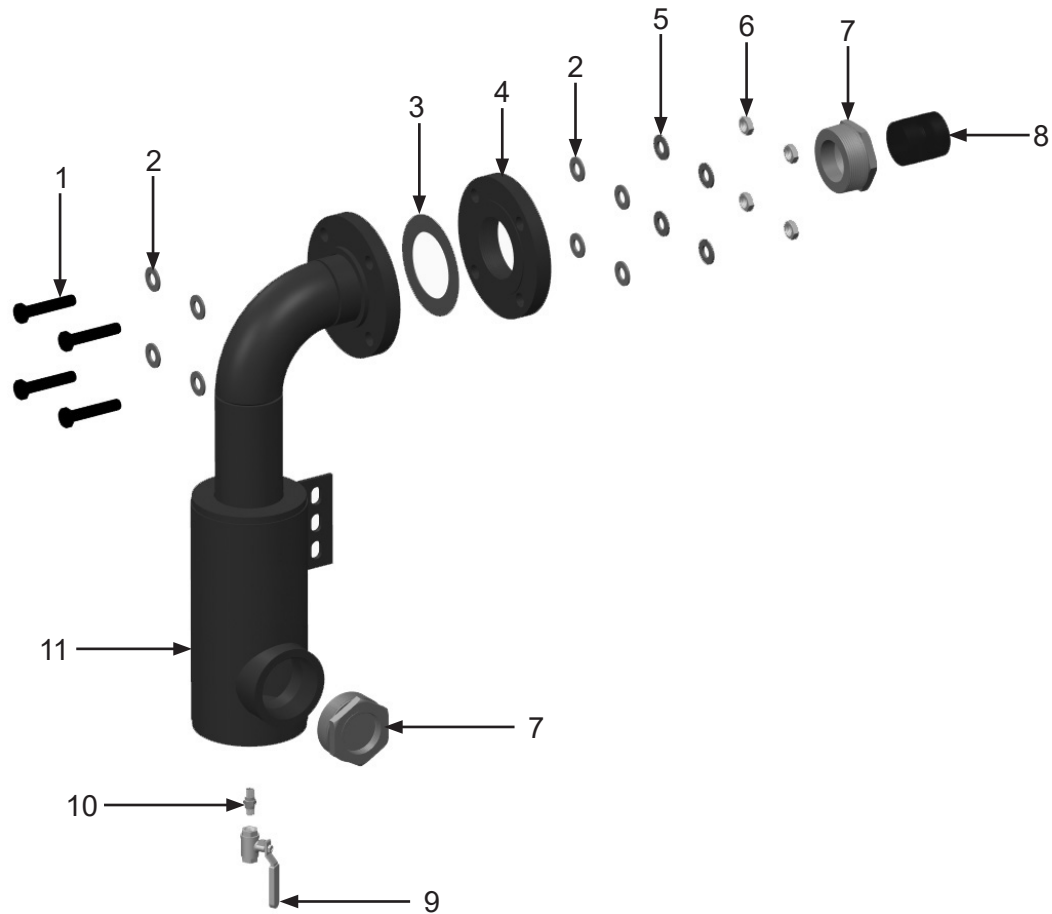
Item #	Part #	Description
--------	--------	-------------

Fig. 5

1	10101058	5/8-11 x 3" Grade 8 Bolt (<i>Eight Required</i>)
2	10101060	5/8" Flat Washer (<i>16 Required</i>)
3	10101047	Flange Gasket (<i>Two Required</i>)
4	10103399	5/8" Grade 8 Split Lock Washer (<i>Four Required</i>)
5	10103393	5/8-11 Grade 8 Hex Nut (<i>Four Required</i>)
6	1001806	2" NPT Close Nipple
7	10101041	3" NPT Threaded Flange (<i>Three Required</i>)
8	10BU35	3" Boss Clamp (<i>Two Required</i>)
9	10101045	3" x 2-1/2' Steel Reinforced Air Hose (<i>Per Foot</i>)
10	10101148	3" NPT Street Elbow (<i>Two Required</i>)
11	10101754	3" NPT Hose Stem (<i>Two Required</i>)
12	10101183	3" (M) x 2" (F) Bushing

PART NUMBERS AND SCHEMATICS

Figure 6: Inlet Filter Assembly



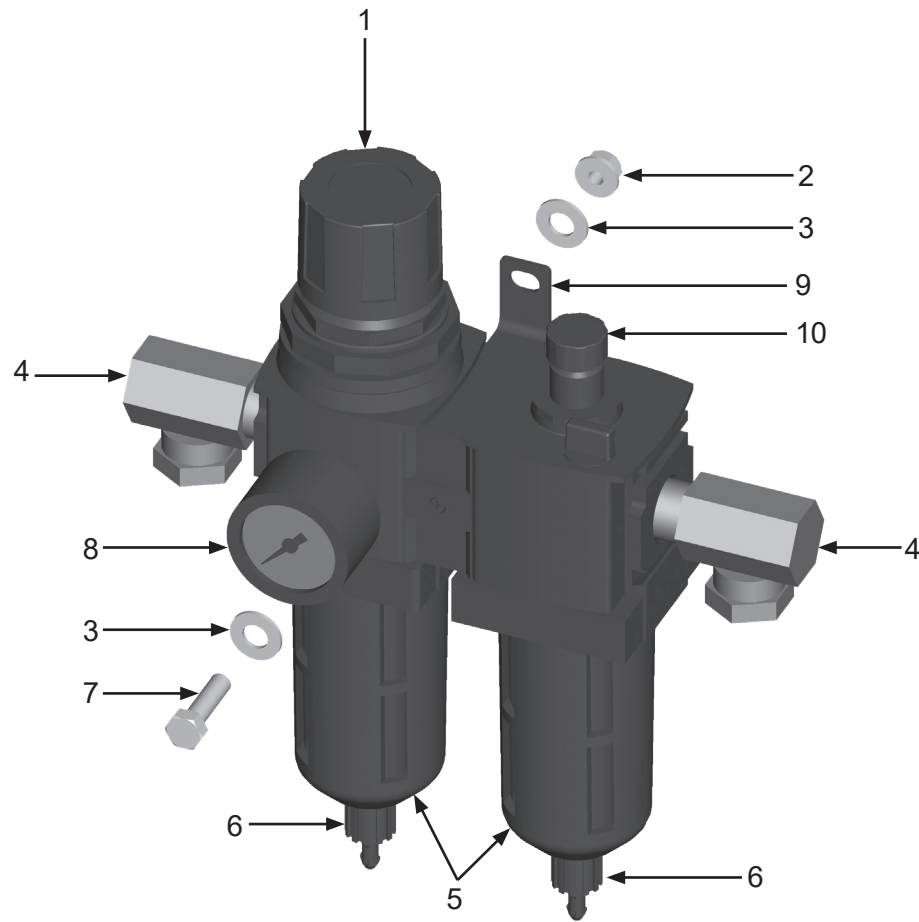
Item #	Part #	Description
--------	--------	-------------

Fig. 6

1	10101058	5/8-11 X 3" Grade 8 Bolt <i>(Four Required)</i>
2	10101060	5/8" Flat Washer <i>(Eight Required)</i>
3	10101047	Flange Gasket
4	10101041	3" NPT Threaded Flange
5	10103399	5/8" Grade 8 Split Lock Washer <i>(Four Required)</i>
6	10103393	5/8-11 Grade 8 Hex Nut <i>(Four Required)</i>
7	10101183	3" to 2" Bushing <i>(Two Required)</i>
8	1001806	2" NPT Close Nipple
9	1080050	1/4" NPT Full Port Ball Valve
10	1017019	1/4" NPT Hex Nipple
11	10101049	Inlet Moisture Separator

PART NUMBERS AND SCHEMATICS

Figure 7: Air Filter/Regulator/Lubricator



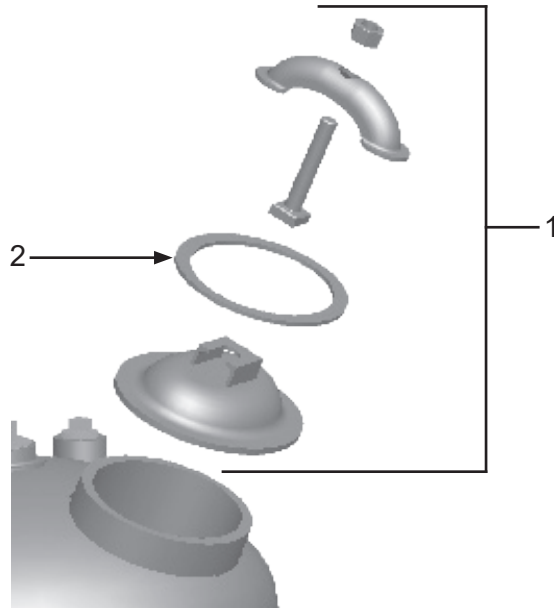
Item #	Part #	Description
--------	--------	-------------

Fig. 7

1	10101232	Filter/Regulator/Lubricator with Pressure Gauge
2	1012323	1/4" Nylon Insert Lock Nut (<i>Two Required</i>)
3	1014017	1/4" Flat Washer (<i>Four Required</i>)
4	10SAP1290	1/2" 90° Swivel (<i>Two Required</i>)
5	10101235 10109913	Polycarbonate Bowl - Wilkerson (<i>Two Required</i>) Bowl With O-Ring - Midwest Control (<i>Two Required</i>)
6	10101234 10109914	Manual Drain - Wilkerson Manual Drain - Midwest Control
7	1012154	1/4-20 X 1" Bolt (<i>Two Required</i>)
8	1028606	Pressure Gauge – 0-160 PSI 1/4" – Back Mount
9	10109907	Quick Clamp with Bracket - Midwest Control
10	10109912	Sight Dome - Midwest Control
–	10101233 10109915	Filter Element - Wilkerson Filter Element 40 Micron - Midwest Control
–	1070517	Pneumatic Air Tool Oil–32 oz. bottle

PART NUMBERS AND SCHEMATICS

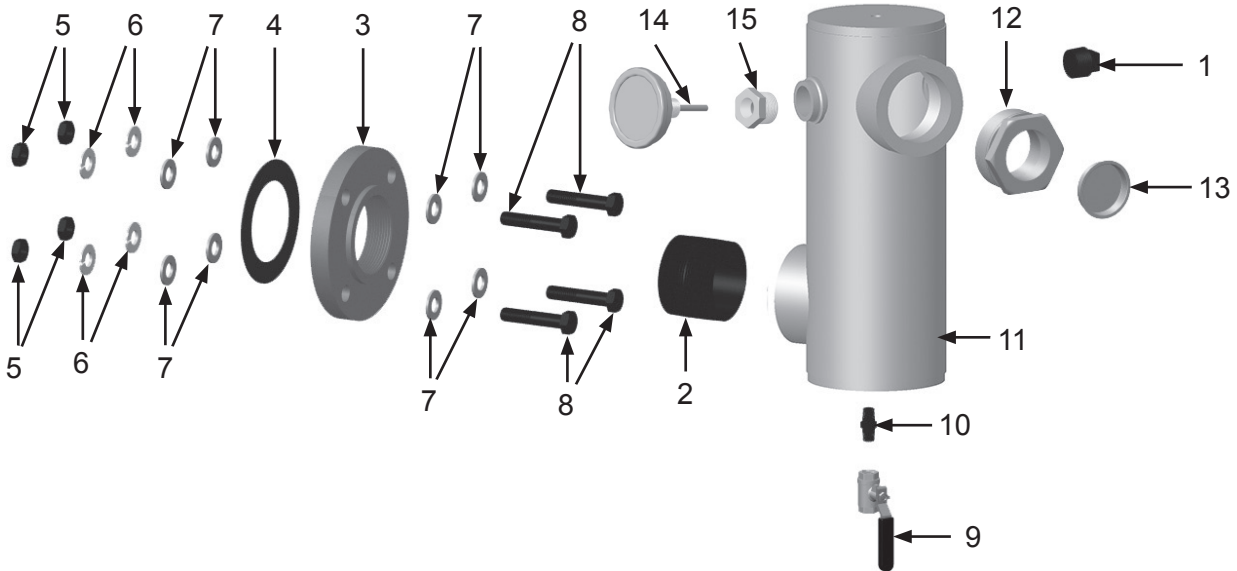
Figure 8: Inspection Door Assembly



Item #	Part #	Description
Fig. 8		
1	10106105	Air Dryer Inspection Door Assembly – Complete <i>Includes Item #2</i>
2	1006201	Inspection Door Gasket

PART NUMBERS AND SCHEMATICS

Figure 9: Outlet Filter



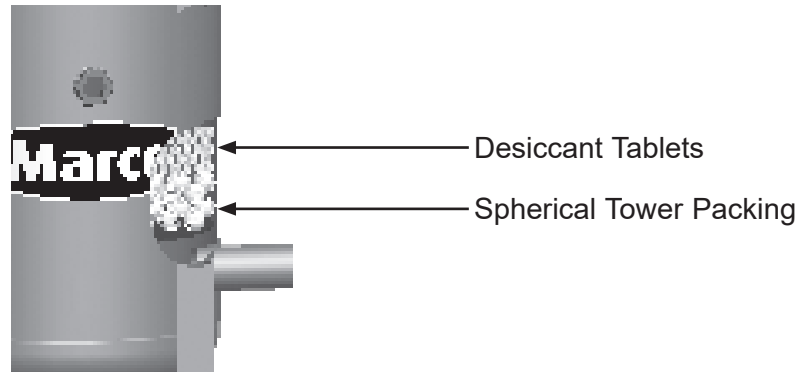
Item #	Part #	Description
--------	--------	-------------

Fig. 9

1	1011901	1" Galvanized Square Head Pipe Plug
2	10101040	3" Galvanized Close Nipple
3	10101041	Flange
4	10101047	Flange Gasket
5	10103393	5/8-11 Grade 8 Hex Nut (<i>Four Required</i>)
6	10103399	5/8" Lock Washer (<i>Four Required</i>)
7	10101060	5/8" x 1-5/16" Stainless Steel Flat Washer (<i>Eight Required</i>)
8	10101058	5/8-11 x 3" Grade 8 Hex Bolt (<i>Four Required</i>)
9	1080050	1/4" Ball Valve
10	1017019	1/4" x 1/4" Hex Nipple
11	10101686	Outlet Filter Body
12	10101183	3" (M) x 2" (F) Bushing
13	10101237	Transport Plug
14	10109757	Thermometer 1/2" NPT 0-200 Deg
15	1011812	1" Male X 1/2" Female Bushing

OPTIONAL ACCESSORIES





Figure 10: Desiccant Tablets and Spherical Tower Packing








Part Numbers	DESICCANT TABLETS	
	Package Weight	Packaging
10V330311	50 pounds	Bag
15V330313	50 pounds	Pail
15V330203	506 pounds	Steel Drum
15V330284	2000 pounds	Bulk Bag

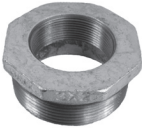
Part Numbers	SPHERICAL TOWER PACKING
	Unit of Measure
10103922	1 Cubic Foot




OPTIONAL ACCESSORIES

		AIRFLOW SHUTOFF KITS – LUG FITTINGS			
	Part Numbers	Pipe String I.D.	Close Nipple	Full Port Ball Valve	Coupling
	10103731	1"	1012151	1011601	10ME2
	10103732	1-1/4"	1011201 (Quantity of Two)	1011602	10ME3
	10103733	1-1/2"	1014015 (Quantity of Two)	1011603	10ME4
	10103734	2"	1001806 (Quantity of Two)	1011604	10ME5






		AIRFLOW SHUTOFF KITS – HAMMERLOCK FITTINGS			
	Part Numbers	Pipe String I.D.	Close Nipple	Full Port Ball Valve	Coupling Spud
	10103830	1"	10102151 (Quantity of Two)	1011601	10DXGB13
	10103831	1-1/4"	1011201 (Quantity of Two)	1011602	10DXGB18
	10103832	1-1/2"	1014015 (Quantity of Two)	1011603	10DXGB23
	10103833	2"	1001806 (Quantity of Two)	1011604	10DXGB28
	10103934	3"	10101040 (Quantity of Two)	1011608	10GB38

OPTIONAL ACCESSORIES

	Part Numbers	INLET/OUTLET BUSHING
		Size
	10101183	Galvanized 3" MNPT x 2" FNPT Bushing

	Part Numbers	PRESSURE RELIEF VALVES	
		PSI	Inlet Size
	10E1POPOFF150	150	1"
	10EPOPOFF125	125	1-1/4"
	10EPOPOFF150	150	1-1/4"

OPTIONAL ACCESSORIES

	Part Numbers	GALVANIZED SQUARE HEAD PIPE PLUGS
		Size
	1011901	1"
	1011902	1-1/4"
	1011101	1-1/2"
	1011823	2"
	10101034	3"

Part Numbers	LUBRICATION
1070517	Pneumatic Air Tool Oil - 32 oz. bottle

MAINTENANCE NOTES

[illegible]

MAINTENANCE NOTES

[illegible]

MAINTENANCE NOTES

[illegible]



ALLREDI THERE

Serving these industries: Bridge, Pipeline, Tank & Tower, Concrete Services, Rail, Shipyard & Marine, Pools & Fountains, and Foundry

UNITED STATES

Pasadena, TX (Headquarters)
844.361.7038

Beaumont, TX
409.722.1284

Bristol, PA
215.826.8080

Corpus Christi, TX
361.887.2038

Davenport, IA
563.324.2519

Deer Park, TX
(Service & Rental Location)
281.930.0905

Duluth, GA
800.535.4564

Gonzales, LA
225.647.7575

Harvey, LA
504.367.8090

Houma, LA
985.580.4273

Lafayette, LA
337.267.1440

Theodore, AL
251.338.7525

CANADA

Calgary, Alberta
403.279.1924

Coquitlam, BC
604.464.6979

Edmonton, Alberta
780.468.2588 (Manus)
780.425.5510 (Mod-U-Blast)

Hamilton, Ontario
905.527.6000 / 888.794.5665

Mississauga, Ontario
905.890.5837

Winnipeg, Manitoba
204.256.3324

WWW.ALLREDI-US.COM / 800.252.7848

WWW.ALLREDI-CA.COM / 800.661.3842

Allredi™ and Marco® are registered trademarks of Allredi, LLC.
Mod-U-Blast® is a registered trademark of Allredi Blast & Abrasives Canada, Inc.
All other brand names or marks are used for identification purposes and are trademarks of their respective owners.

ALLREDI™

Literature #106M182_3/26/2025