



MARCO® 400 CFM AFTERCOOLER WITH COALESCING TANK



PART NUMBERS AND SCHEMATICS GUIDE

Company Profile

Allredi was formed in the early 2020, when two of the largest distributors in the blasting, coating, safety, and environmental industry, APE Companies and Marco Group International, joined forces. While the qualities both companies are known for have not changed, a lot about our business is new. New abilities. New agilities. New ways to help you win. This calls for a new name, Allredi.

This name exemplifies what we have become. It is completely oriented to the needs of our customers. To your needs. It says that when you call us for anything – products, service, expert advice, anything – you can consider it done. Or even better, Allredi done.

We are your right-now supplier. From skills to SKUs, we deliver the goods fast. So you can be more agile every minute, every day. This is who we are. This is what our new name means. Go ahead and expect excellence, because we're bringing it.

Our Mission and Vision

To be the industry's preferred partner in surface preparation solutions through unrivaled technical expertise, customer experience, product availability, and tailored service offerings.

The Allredi Difference

- **Industry Experience** – With Allredi on your team, you have access to expertise which can only come from decades of industry leadership. We have organized our engineering department, production specialists, customer operations, and safety support into a "Center of Competence." As an Allredi customer, you have access to hundreds of years of cumulative experience related to your operations.
- **Manufacturing Excellence** – Allredi is a U.S. based manufacturer of equipment for the Surface Preparation and Protective Coatings industries. Allredi's engineers benchmark the industry to ensure that we design and manufacture superior products that set the "Gold Standard" for performance, safety, and quality.
- **Legendary Customer Service** – Allredi's legendary customer service team is staffed by friendly, highly-trained individuals who are focused on providing the highest level of product support, order accuracy, and customer satisfaction.
- **Product Availability** – We stock over 10,000 SKU's and have over 45 shipping locations to serve North American and International markets for all major brands of blasting, coating, environmental, and safety equipment. Allredi is your right-now supplier, so you can keep your projects moving. From our foundation of strong relationships, we have built a nationwide network that puts vast inventory and ready service close to our customers. We provide advanced expertise, and we deliver the goods fast – so you can easily access the products and services you need to me more agile every minute, every day.
- **Technology Leadership** – Our website provides: Operator's Manuals, Part Numbers and Schematics Guides, SDS information, and key product features and specifications, providing access to information 24/7.

TABLE OF CONTENTS

Company Profile	2
Table of Contents	3
Part Numbers	4
Specifications	5
Assembly Part Numbers & Schematics	6-14
Marco® 400 CFM Aftercooler With Coalescing Tank—Pneumatic	6-7
Marco® 400 CFM Aftercooler With Coalescing Tank—Electric.	8-9
Aftercooler Assembly—Pneumatic	10
Aftercooler Assembly—Electric	11
Transfer Hose Assembly.	12
Inlet Filter Assembly	13
Air Regulator/Lubricator	14
Optional Accessories	15-16
Airflow Shutoff Kits – Lug Fittings.	15
Airflow Shutoff Kits – Hammerlock Fittings.	15
Pipe Plugs	16
Pressure Relief Valves	16
Lubrication	16
Maintenance Notes	17-19

PART NUMBERS

MARCO® 400 CFM AFTERCOOLER WITH COALESCING TANK

Part Numbers	Inlet			Outlet			Power Source	Filter, Regulator, and Lubricator	Electric Starter Box
	Inlet Quantity	Inlet Size	Fittings	Outlet Quantity	Outlet Size	Fittings			
10101250	1	3"	Not Included	9	(1) 3", (1) 2", (2) 1-1/2", (1) 1-1/4", (4) 1"	Not Included	Pneumatic	Included	Not Included
10101251	1	3"	Not Included	9	(1) 3", (1) 2", (2) 1-1/2", (1) 1-1/4", (4) 1"	Not Included	115-Volt AC	Not Included	Included
10108807	1	3"	Not Included	9	(1) 3", (1) 2", (2) 1-1/2", (1) 1-1/4", (4) 1"	Not Included	230-Volt AC	Not Included	Included

* Inlet fittings include 3" (M) x 2" (F) Reducing Bushing.



Marco® 400 CFM Aftercooler with Coalescing Tank – Pneumatic



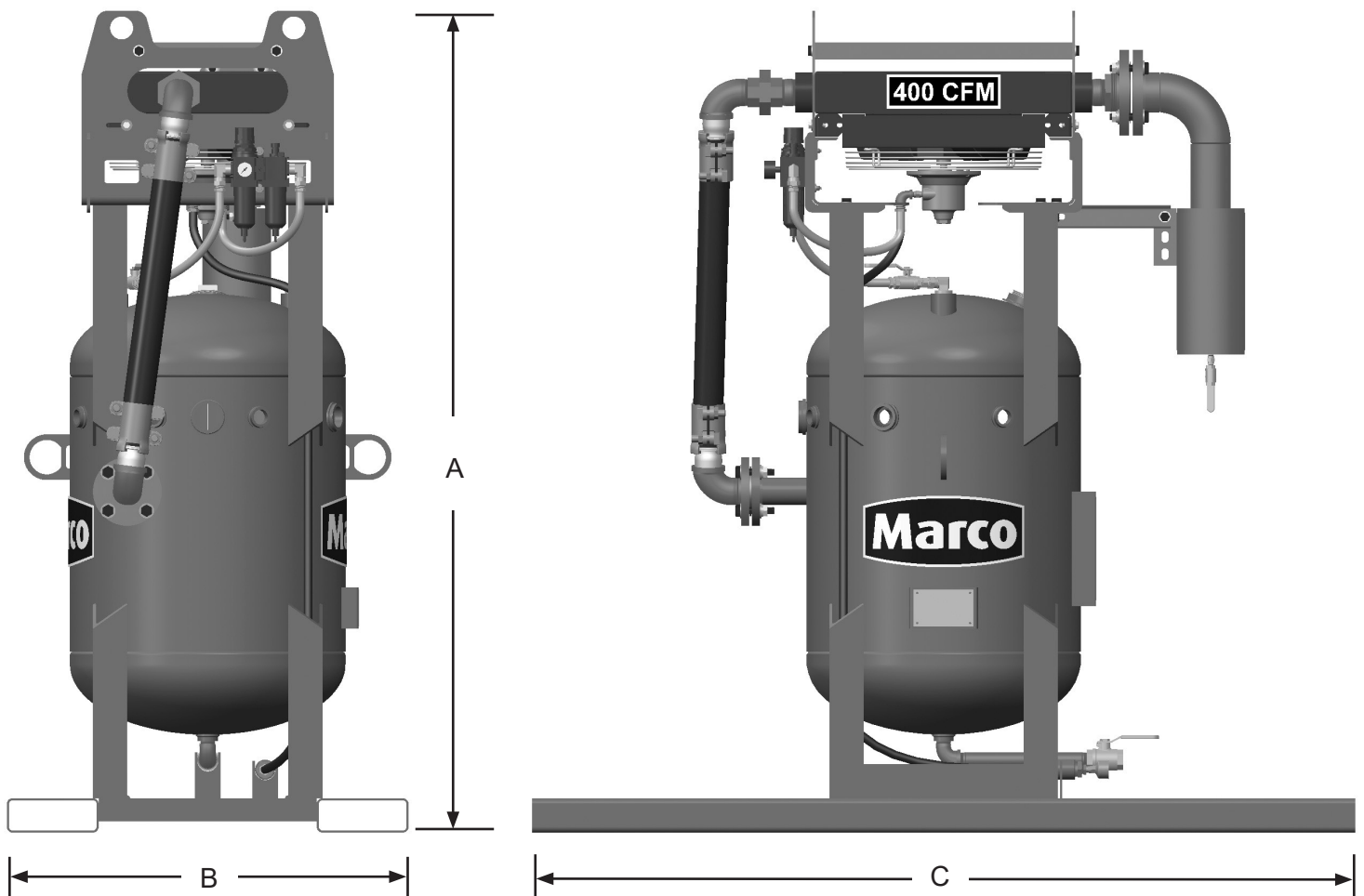
Marco® 400 CFM Aftercooler with Coalescing Tank – Electric

SPECIFICATIONS

Lubrication: SAE 10 oil or Air Tool Anti-freeze Lubricant

Empty Weight: 675 Pounds

Overall Dimensions: A: 72"
B: 35"
C: 72"



Pneumatic model shown. Electric model has same dimensions.

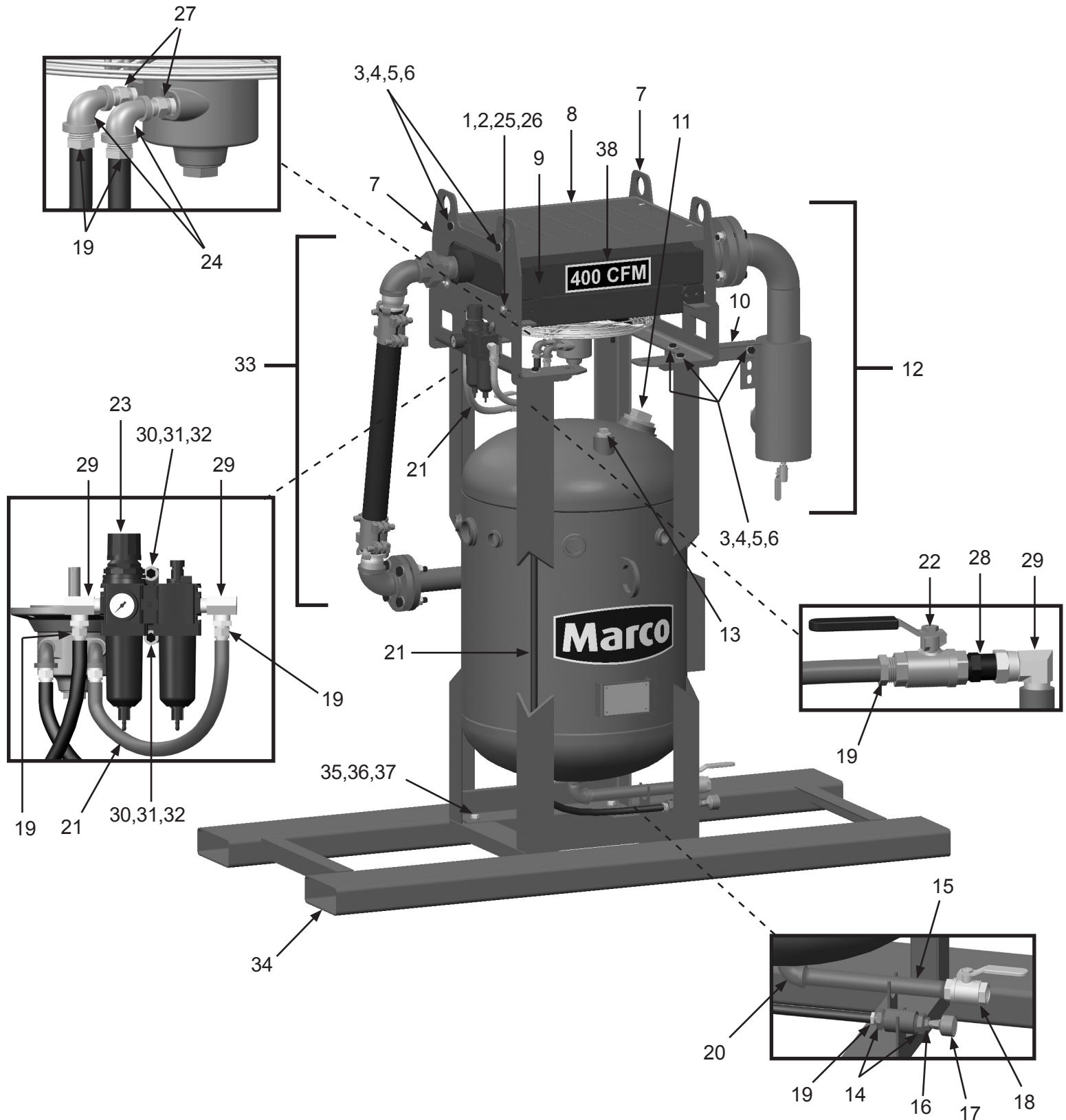
PART NUMBERS & SCHEMATICS

Marco® 400 CFM Aftercooler With Coalescing Tank—Pneumatic

Item #	Part #	Description	Item #	Part #	Description
Fig. 1					
—	10101250	Marco® 400 CFM Aftercooler With Coalescing Tank—Pneumatic	26	10101938	3/8"-16 Hex Nut Galvanized (<i>Four Required</i>)
1	10101059	3/8-16 x 1-1/4" Galvanized Hex Bolt (<i>Four Required</i>)	27	1017019	1/4" NPT Hex Nipple (<i>Two Required</i>)
2	10101942	3/8" x 3/4" Washer Galvanized (<i>Eight Required</i>)	28	20100677	1/2" NPT Hex Nipple
3	10101943	1/2-13 x 1-3/4" Hex Bolt Galvanized (<i>10 Required</i>)	29	10SAP1290	1/2" 90° Swivel (<i>Three Required</i>)
4	10100674	1/2" Flat Washer Galvanized (<i>20 Required</i>)	30	1012154	1/4-20 x 1" Hex Bolt Zinc (<i>Two Required</i>)
5	10100675	1/2" Split Lock Washer Galvanized (<i>10 Required</i>)	31	10101939	1/4"-20 SS Lock Nut with Nylon Insert (<i>Two Required</i>)
6	10101941	1/2" Hex Nut Galvanized (<i>10 Required</i>)	32	10101940	1/4" Flat Washer Galvanized (<i>Four Required</i>)
7	10101176	Mounting Bracket (<i>Two Required</i>)	33	—	Transfer Hose Assembly (See Fig. 5)
8	10101271	Heat Exchanger Protective Grate	34	10101024	Skid Weldment
9	10TTAHP4005	400 CFM Aftercooler - Pneumatic—Complete (See Fig. 3)	35	10104711	1/2-13 x 1-5/8" Grade 8 Hex Bolt Zinc (<i>Four Required</i>)
10	10101170	Brace	36	10107496	1/2-13 Grade 8 Lock Nut Zinc (<i>Four Required</i>)
11	10101034	3" NPT Galvanized Pipe Plug	37	10107495	1/2" Grade 8 Flat Washer Zinc (<i>Eight Required</i>)
12	—	Inlet Filter Assembly (See Fig. 6)	38	1094535	400 CFM Product Sticker
13	1011902	1-1/4" NPT Galvanized Pipe Plug	—	1070517	Pneumatic Tool Oil — 32 oz.
14	1011812	1" to 1/2" Bushing	—	1091017	Warning Tag
15	10101064	1" x 12" NPT Pipe Nipple	—	106M092	Part Numbers and Schematics Guide – Marco® 400 CFM Aftercooler with Coalescing Tank
16	1011818	1/2" to 1/4" Bushing	—	1090092	Operator's Manual – Marco® 400 CFM Aftercooler With Coalescing Tank
17	10101784	Muffler			
18	1011601	1" NPT Full Port Valve			
19	10PAF050	1/2" Push-on Hose Fitting (<i>Six Required</i>)			
20	1011801	1" Street Elbow			
21	10AH012	1/2" I.D. Air Hose (<i>Per Foot</i>)			
22	10L363	1/2" NPT Full Port Ball Valve			
23	10101232	Air Regulator/Lubricator with Pressure Gauge (See Fig. 7)			
24	10101185	1/2" x 1/4" Reducing Elbow (<i>Two Required</i>)			
25	10L805015	3/8" Lock Washer Galvanized (<i>Four Required</i>)			

PART NUMBERS AND SCHEMATICS

Figure 1: Marco® 400 CFM Aftercooler With Coalescing Tank—Pneumatic



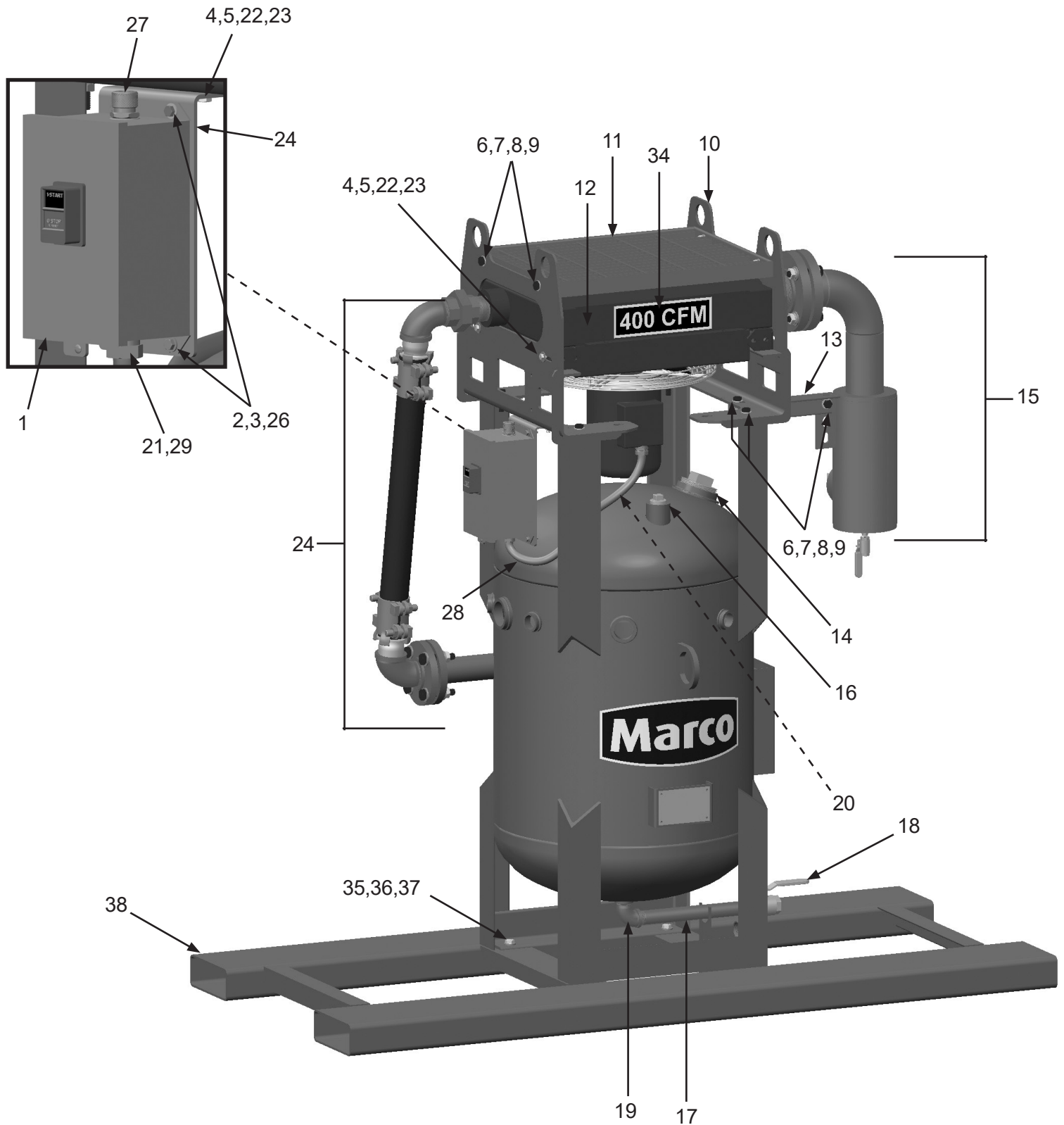
PART NUMBERS AND SCHEMATICS

Marco® 400 CFM Aftercooler With Coalescing Tank—Electric

Item #	Part #	Description	Item #	Part #	Description
Fig. 2			24	10108830	Bracket
—	10101251	Marco® 400 CFM Aftercooler With Coalescing Tank – 115 Volt Electric	25	—	Transfer Hose Assembly (See Fig. 5)
—	10108807	Marco® 400 CFM Aftercooler With Coalescing Tank – 230 Volt Electric	26	1012323	1/4-20 Lock Nut Zinc (Four Required)
1	10101760	Motor Starter - Single Phase	27	20101299	3/4" NPT Cord Grip
2	1012154	1/4-20 x 1" Hex Bolt Zinc (Four Required)	28	20RSEL050UL	1/2" UL/UA Seal-Tite Conduit (Per Foot)
3	1014017	1/4" Flat Washer Zinc (Eight Required)	29	10108844	3/4" x 1/2" Reducing Washer (Two Required)
4	10101059	3/8-16 x 1-1/4" Galvanized Bolt (Six Required)	30	10101024	Skid Weldment
5	10101942	3/8" x 3/4" Washer (12 Required)	31	10104711	1/2-13 x 1-5/8" Grade 8 Hex Bolt Zinc (Four Required)
6	10101943	1/2-13 x 1-3/4" Hex Bolt (10 Required)	32	10107496	1/2-13 Grade 8 Lock Nut Zinc (Four Required)
7	10100674	1/2" Flat Washer (20 Required)	33	10107495	1/2" Grade 8 Flat Washer Zinc (Eight Required)
8	10100675	1/2" Split Lock Washer (10 Required)	34	1094535	400 CFM Product Sticker
9	10101941	1/2-13 Hex Nut (10 Required)	35	10104711	1/2-13 x 1-5/8" Grade 8 Hex Bolt Zinc (Four Required)
10	10101176	Mounting Bracket (Two Required)	36	10107496	1/2-13 Grade 8 Lock Nut Zinc (Four Required)
11	10101271	Heat Exchanger Protective Grate	37	10107495	1/2" Grade 8 Flat Washer Zinc (Eight Required)
12	10TTAHP4002	400 CFM Aftercooler Assembly - Complete (See Fig. 4)	38	10101024	Skid Weldment
13	10101170	Brace	—	10108797	Thermal Unit - Full Load Current 11.5 - 12.8 Amps (For use with 10101251)
14	10101034	3" NPT Galvanized Pipe Plug	—	10108794	Thermal Unit - Full Load Current 5.74 - 6.35 Amps (For use with 10108807)
15	—	Inlet Filter Assembly (See Fig. 6)	—	1091017	Warning Tag
16	1011902	1-1/4" NPT Galvanized Pipe Plug	—	106M092	Part Numbers and Schematics Guide – Marco® 400 CFM Aftercooler with Coalescing Tank
17	10101064	1" x 12" NPT Pipe Nipple	—	1090092	Operator's Manual – Marco® 400 CFM Aftercooler With Coalescing Tank
18	1011601	1" NPT Full Port Valve			
19	1011801	1" Street Elbow			
20	20G100737	1/2" NPT Pipe Plug			
21	20RST50	1/2" Straight Conduit Connector (Two Required)			
22	10L805015	3/8" Lock Washer Galvanized (Six Required)			
23	10101938	3/8-16 Hex Nut Galvanized (Six Required)			

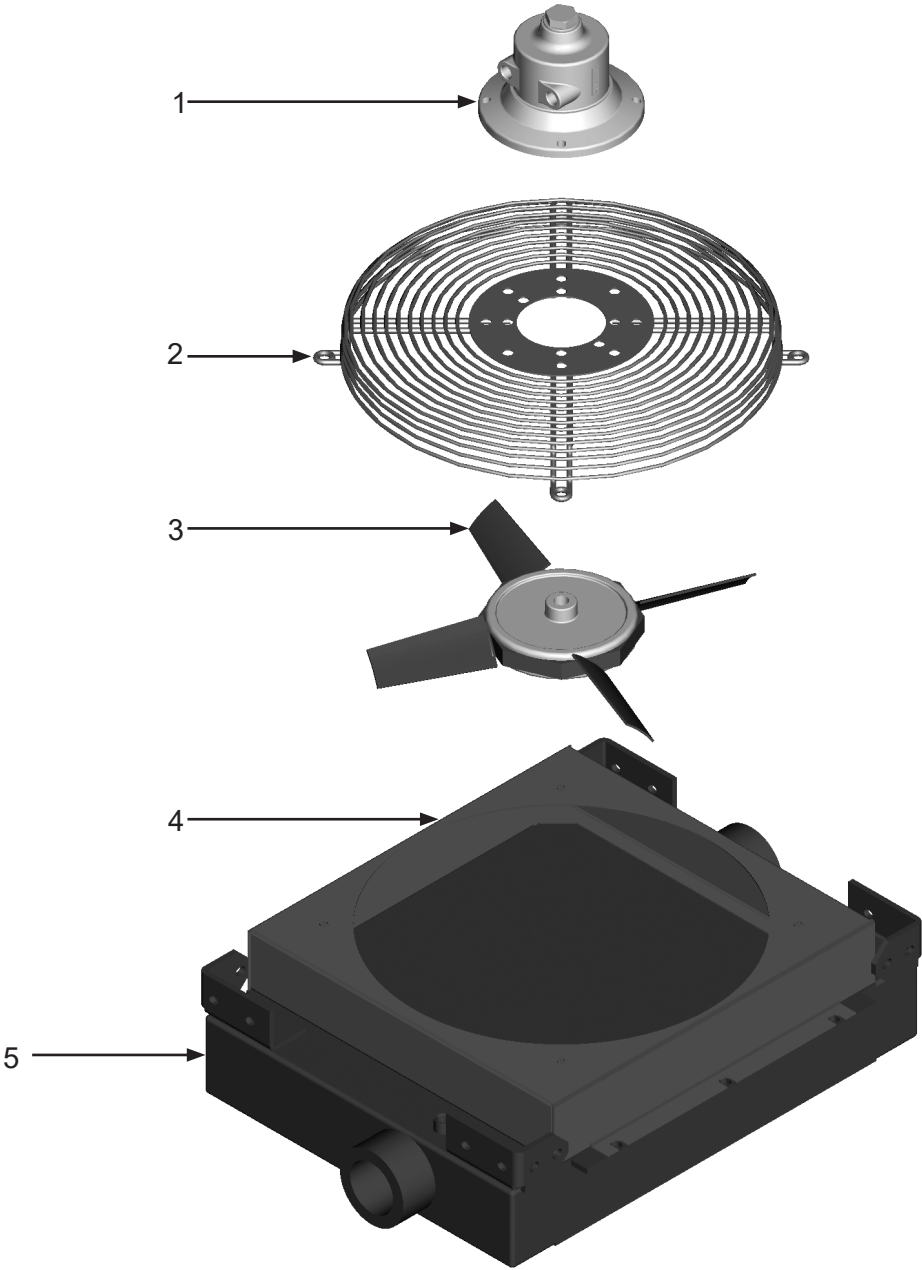
PART NUMBERS AND SCHEMATICS

Figure 2: Marco® 400 CFM Aftercooler With Coalescing Tank—Electric



PART NUMBERS AND SCHEMATICS

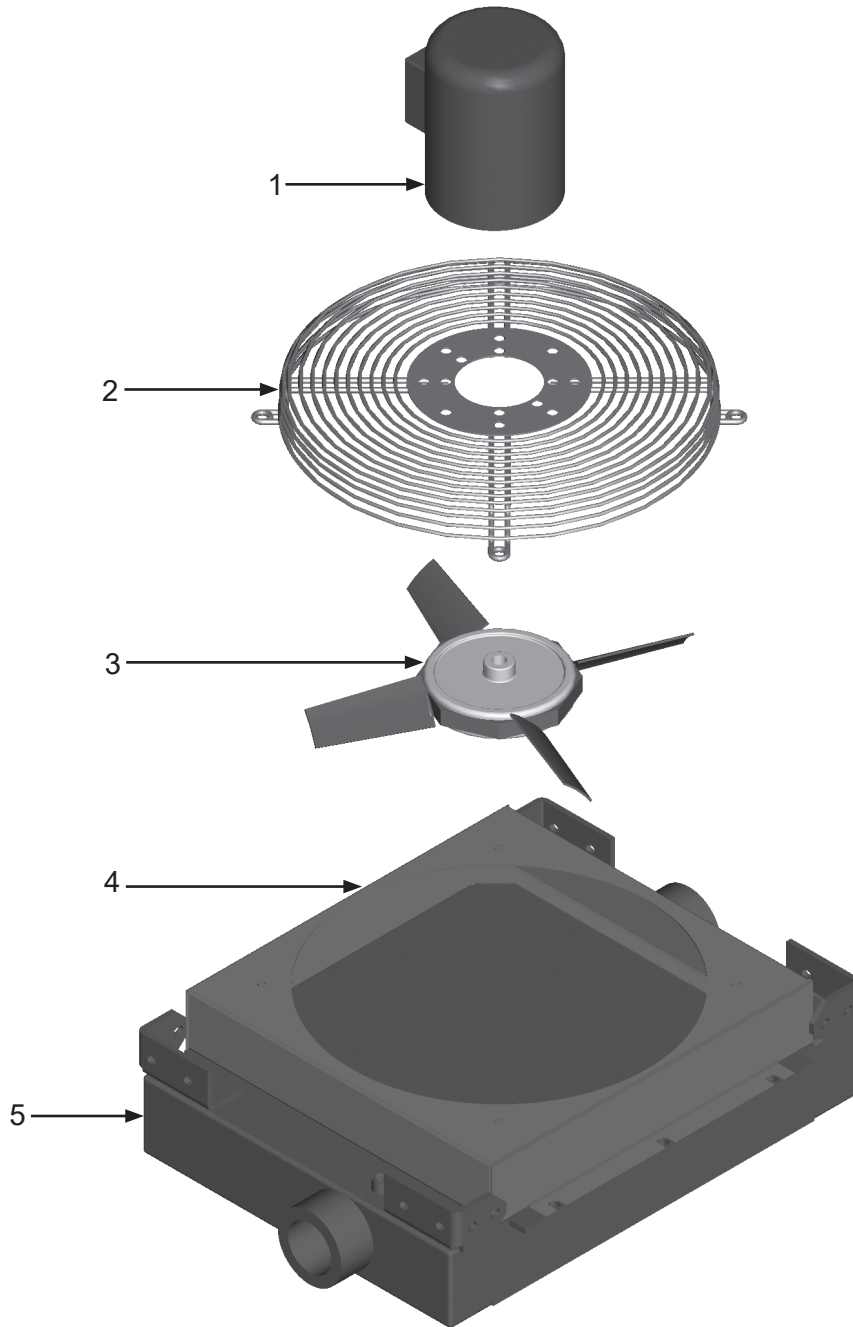
Figure 3: Aftercooler Assembly—Pneumatic



Item #	Part #	Description
Fig. 3		
—	10TTAHP4005	400 CFM Aftercooler—Pneumatic—Complete
1	10101780	Air Motor
2	10101788	Fan Guard
3	10101787	Fan Blade Assembly (Includes four Blades and Hub)
4	10103983	Fan Shroud
5	10101786	Aftercooler Core
—	10101781	Air Motor Service Kit (Includes: shaft seal, drive end bearing, dead end bearing, four vanes, four push pins, four vane springs, shim, end cap gasket, muffler cartridge, and muffler felt)

PART NUMBERS AND SCHEMATICS

Figure 4: Aftercooler Assembly—Electric



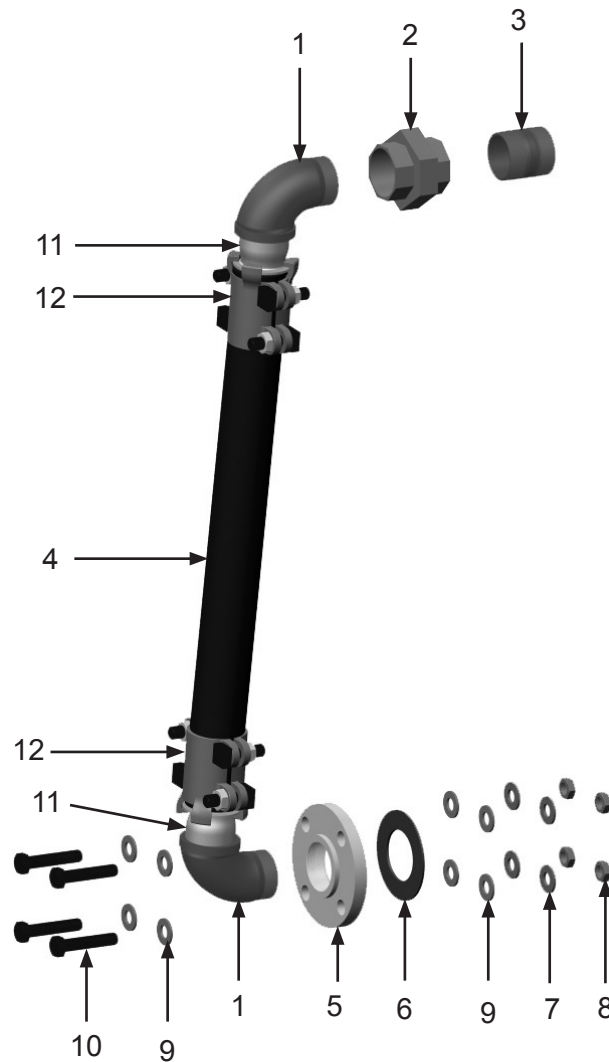
Item #	Part #	Description
--------	--------	-------------

Fig. 4

—	10TTAHP4002	400 CFM Aftercooler—Electric—Complete
1	10101789	Electric Motor – (115 Volt to 208-230 Volt) – Single Phase
2	10101788	Fan Guard
3	10101787	Fan Blade Assembly (Includes four Blades and Hub)
4	10103983	Fan Shroud
5	10101786	Aftercooler Core

PART NUMBERS AND SCHEMATICS

Figure 5: Transfer Hose Assembly



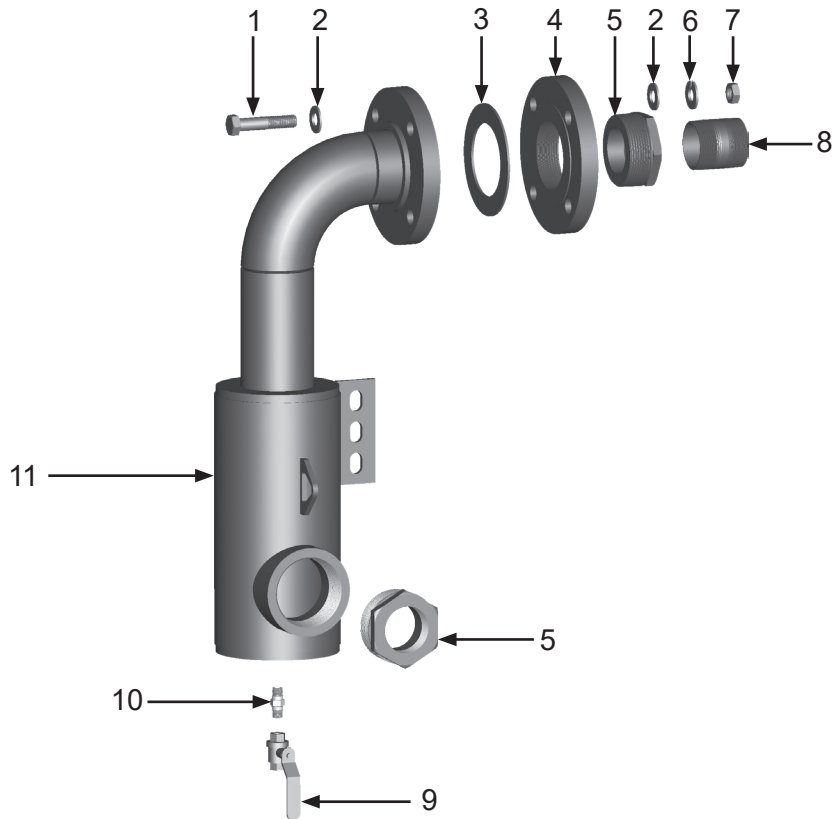
Item #	Part #	Description
--------	--------	-------------

Fig. 5

1	10101265	2" NPT 90° Street Elbow <i>(Two Required)</i>
2	10101267	2" Bushing NPT Union
3	1001806	2" NPT Close Nipple
4	10101269	2" X 2-1/2' Steel Reinforced Air Hose <i>(Per Foot)</i>
5	10101270	2" NPT Threaded Flange
6	10101266	2" Flange Gasket
7	10101061	5/8" Split Washer Galvanized <i>(Four Required)</i>
8	10101062	5/8-11 Hex Nut <i>(Four Required)</i>
9	10101060	5/8" Flat Washer <i>(Eight Required)</i>
10	10101058	5/8-11 X 3" Hex Bolt Galvanized <i>(Four Required)</i>
11	10101268	2" NPT Hose End <i>(Two Required)</i>
12	10BU28	2" Boss Clamp <i>(Two Required)</i>

PART NUMBERS AND SCHEMATICS

Figure 6: Inlet Filter Assembly



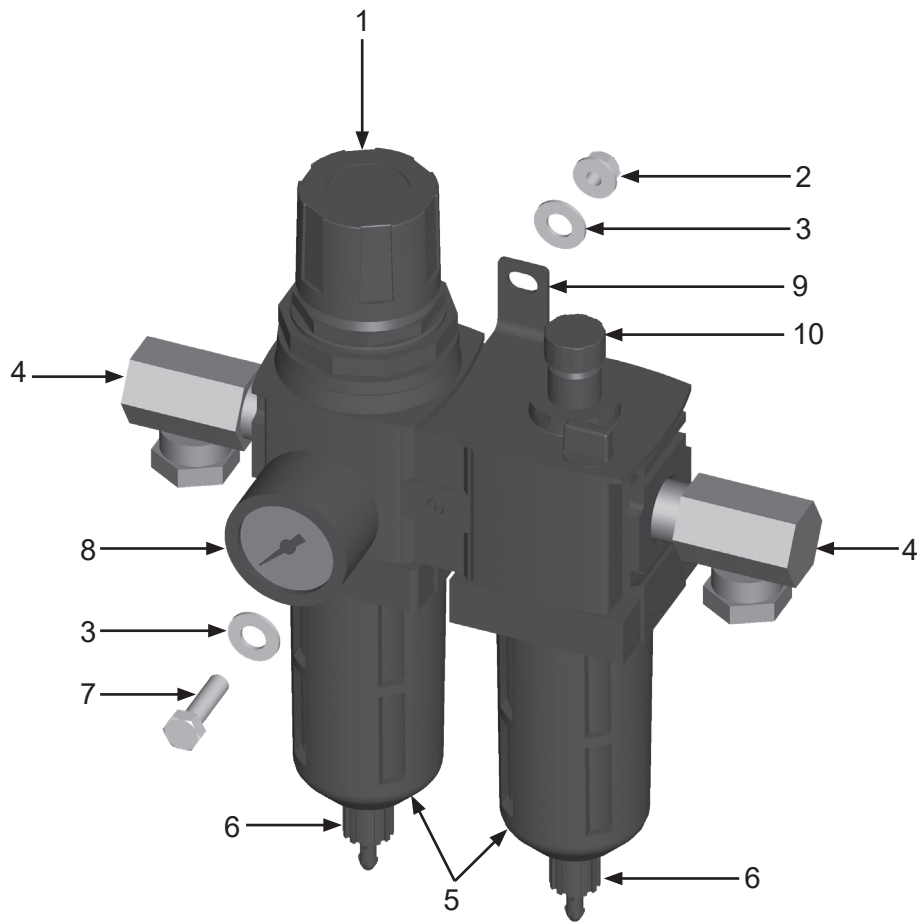
Item #	Part #	Description
--------	--------	-------------

Fig. 6

1	10101058	5/8-11 X 3" Bolt Galvanized <i>(Four Required)</i>
2	10101060	5/8" Flat Washer <i>(Eight Required)</i>
3	10101047	3" Flange Gasket
4	10101041	3" NPT Threaded Flange
5	10101183	3" to 2" Bushing <i>(Two Required)</i>
6	10101061	5/8" Split Washer Galvanized <i>(Four Required)</i>
7	10101062	5/8-11 Hex Nut <i>(Four Required)</i>
8	1001806	2" NPT Close Nipple
9	1080050	1/4" NPT Full Port Ball Valve
10	1017019	1/4" NPT Hex Nipple
11	10101049	Inlet Moisture Separator

PART NUMBERS AND SCHEMATICS

Figure 7: Air Regulator/Lubricator












Item #	Part #	Description
--------	--------	-------------

Fig. 7




1	10101232	Filter/Regulator/Lubricator with Pressure Gauge
2	1012323	1/4" Nylon Insert Lock Nut (<i>Two Required</i>)
3	1014017	1/4" Flat Washer (<i>Four Required</i>)
4	10SAP1290	1/2" 90° Swivel (<i>Two Required</i>)
5	10101235	Polycarbonate Bowl - Wilkerson (<i>Two Required</i>)
	10109913	Bowl With O-Ring - Midwest Control (<i>Two Required</i>)
6	10101234	Manual Drain - Wilkerson
	10109914	Manual Drain - Midwest Control
7	1012154	1/4-20 X 1" Bolt (<i>Two Required</i>)
8	1028606	Pressure Gauge – 0-160 PSI 1/4" – Back Mount
9	10109907	Quick Clamp with Bracket - Midwest Control
10	10109912	Sight Dome - Midwest Control
–	10101233	Filter Element - Wilkerson
	10109915	Filter Element 40 Micron - Midwest Control
–	1070517	Pneumatic Air Tool Oil–32 oz. bottle




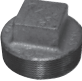
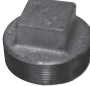
OPTIONAL ACCESSORIES

		AIRFLOW SHUTOFF KITS – LUG FITTINGS			
	Part Numbers	Pipe String I.D.	Close Nipple	Full Port Ball Valve	Coupling
	10103731	1"	1012151	1011601	10ME2
	10103732	1-1/4"	1011201 (Quantity of Two)	1011602	10ME3
	10103733	1-1/2"	1014015 (Quantity of Two)	1011603	10ME4
	10103734	2"	1001806 (Quantity of Two)	1011604	10ME5

		AIRFLOW SHUTOFF KITS – HAMMERLOCK FITTINGS			
	Part Numbers	Pipe String I.D.	Close Nipple	Full Port Ball Valve	Coupling Spud
	10103830	1"	10102151 (Quantity of Two)	1011601	10DXGB13
	10103831	1-1/4"	1011201 (Quantity of Two)	1011602	10DXGB18
	10103832	1-1/2"	1014015 (Quantity of Two)	1011603	10DXGB23
	10103833	2"	1001806 (Quantity of Two)	1011604	10DXGB28
	10103934	3"	10101040 (Quantity of Two)	1011608	10GB38

OPTIONAL ACCESSORIES

	Part Numbers	PRESSURE RELIEF VALVES	
		PSI	Inlet Size
	10E1POPOFF150	150	1"
	10EPOPOFF125	125	1-1/4"
	10EPOPOFF150	150	1-1/4"

	Part Numbers	GALVANIZED SQUARE HEAD PIPE PLUGS	
		Size	
	1011901	1"	
	1011902	1-1/4"	
	1011101	1-1/2"	
	1011823	2"	
	10101034	3"	

Part Numbers	LUBRICATION
1070517	Pneumatic Air Tool Oil - 32 oz. bottle

MAINTENANCE NOTES

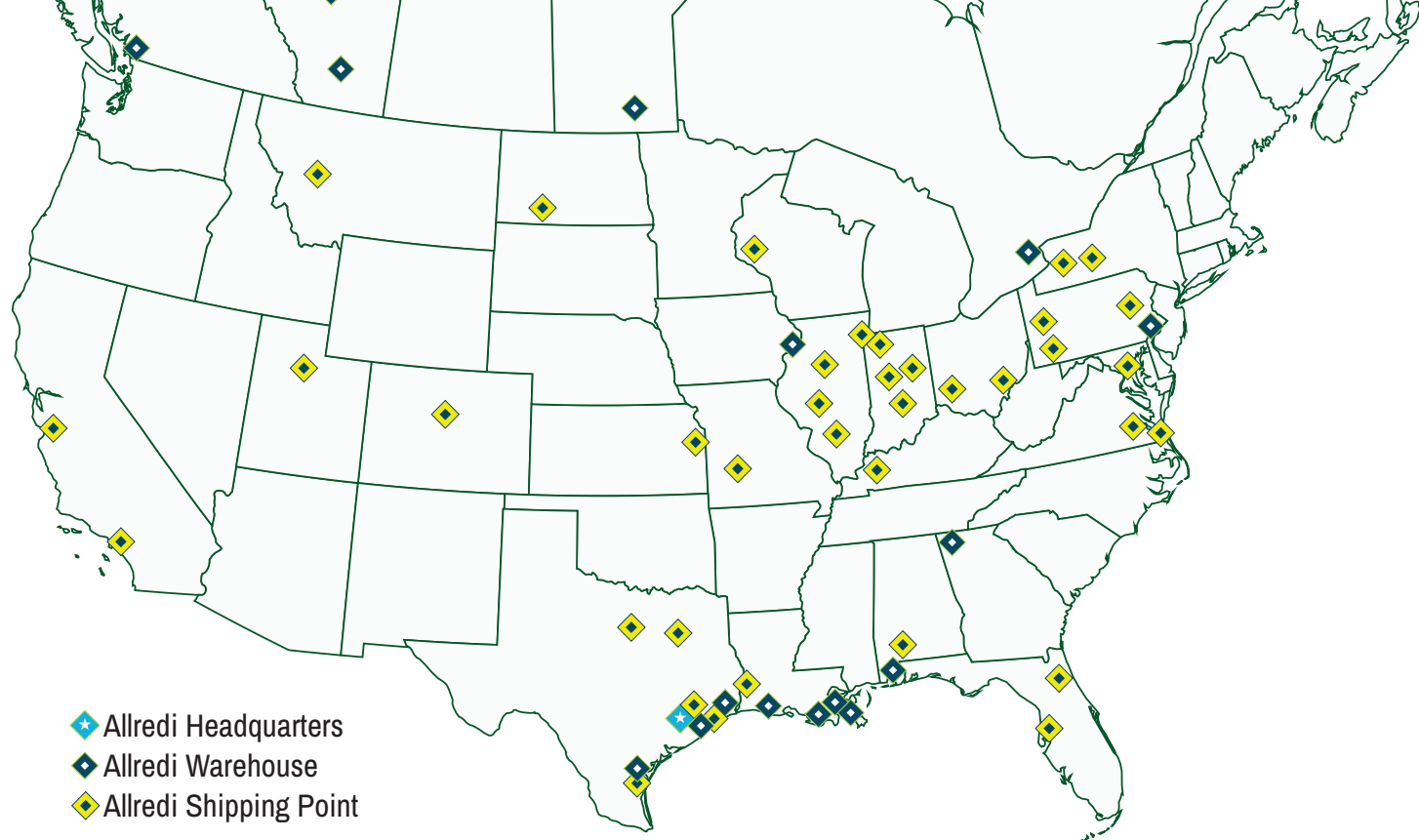
[illegible]

MAINTENANCE NOTES

[illegible]

MAINTENANCE NOTES

[illegible]



ALLREDI THERE

Serving these industries: Bridge, Pipeline, Tank & Tower, Concrete Services, Rail, Shipyard & Marine, Pools & Fountains, and Foundry

UNITED STATES

Pasadena, TX (*Headquarters*)
844.361.7038

Beaumont, TX
409.722.1284

Bristol, PA
215.826.8080

Corpus Christi, TX
361.887.2038

Davenport, IA
563.324.2519

Deer Park, TX
(*Service & Rental Location*)
281.930.0905

Duluth, GA
800.535.4564

Gonzales, LA
225.647.7575

Harvey, LA
504.367.8090

Houma, LA
985.580.4273

Lafayette, LA
337.267.1440

Theodore, AL
251.338.7525

CANADA

Calgary, Alberta
403.279.1924

Coquitlam, BC
604.464.6979

Edmonton, Alberta
780.468.2588 (Manus)
780.425.5510 (Mod-U-Blast)

Hamilton, Ontario
905.527.6000 / 888.794.5665

Mississauga, Ontario
905.890.5837

Winnipeg, Manitoba
204.256.3324

800.BLAST.IT / WWW.ALLREDI-US.COM

Allredi™ and Marco® are registered trademarks of Allredi, LLC.
All other brand names or marks are used for identification purposes and are trademarks of their respective owners.

ALLREDI™
Literature #106M092_7/10/2024