



MARCO® 250 CFM AFTERCOOLER WITH MOISTURE SEPARATOR



PART NUMBERS AND SCHEMATICS GUIDE

Company Profile

Allredi was formed in the early 2020, when two of the largest distributors in the blasting, coating, safety, and environmental industry, APE Companies and Marco Group International, joined forces. While the qualities both companies are known for have not changed, a lot about our business is new. New abilities. New agilities. New ways to help you win. This calls for a new name, Allredi.

This name exemplifies what we have become. It is completely oriented to the needs of our customers. To your needs. It says that when you call us for anything – products, service, expert advice, anything – you can consider it done. Or even better, Allredi done.

We are your right-now supplier. From skills to SKUs, we deliver the goods fast. So you can be more agile every minute, every day. This is who we are. This is what our new name means. Go ahead and expect excellence, because we're bringing it.

Our Mission and Vision

To be the industry's preferred partner in surface preparation solutions through unrivaled technical expertise, customer experience, product availability, and tailored service offerings.

The Allredi Difference

- **Industry Experience** – With Allredi on your team, you have access to expertise which can only come from decades of industry leadership. We have organized our engineering department, production specialists, customer operations, and safety support into a "Center of Competence." As an Allredi customer, you have access to hundreds of years of cumulative experience related to your operations.
- **Manufacturing Excellence** – Allredi is a U.S. based manufacturer of equipment for the Surface Preparation and Protective Coatings industries. Allredi's engineers benchmark the industry to ensure that we design and manufacture superior products that set the "Gold Standard" for performance, safety, and quality.
- **Legendary Customer Service** – Allredi's legendary customer service team is staffed by friendly, highly-trained individuals who are focused on providing the highest level of product support, order accuracy, and customer satisfaction.
- **Product Availability** – We stock over 10,000 SKU's and have over 45 shipping locations to serve North American and International markets for all major brands of blasting, coating, environmental, and safety equipment. Allredi is your right-now supplier, so you can keep your projects moving. From our foundation of strong relationships, we have built a nationwide network that puts vast inventory and ready service close to our customers. We provide advanced expertise, and we deliver the goods fast – so you can easily access the products and services you need to be more agile every minute, every day.
- **Technology Leadership** – Our website provides: Operator's Manuals, Part Numbers and Schematics Guides, SDS information, and key product features and specifications, providing access to information 24/7.

TABLE OF CONTENTS

Company Profile	2
Table of Contents	3
Part Numbers	4
Specifications	5
Part Numbers and Schematics	6-14
Marco® 250 CFM Cart Mounted Aftercooler With Moisture Separator—Pneumatic	6-7
Marco® 250 CFM Cart Mounted Aftercooler With Moisture Separator—Electric	8-9
Aftercooler Assembly—Pneumatic	10
Aftercooler Assembly—Electric	11
Transfer Hose Assembly	12
Air Regulator/Lubricator	13
1-1/4" Junior Extractor Moisture Separator Assembly . . .	14
Optional Accessories	15-16
Airflow Shutoff Kits – Lug Fittings	15
Airflow Shutoff Kits – Hammerlock Fittings	15
Pipe Plugs	16
Lubrication	16
Maintenance Notes	17-19

PART NUMBERS

MARCO® 250 CFM CART MOUNTED AFTERCOOLER WITH MOISTURE SEPARATOR

Part Numbers	Inlet			Outlet			Power Source	Filter, Regulator, and Lubricator	Electric Starter Box
	Inlet Quantity	Inlet Size	Fittings	Outlet Quantity	Outlet Size	Fittings			
10101340	1	1-1/4"	Included	5	(1) 2", (4) 1"	Not Included	Pneumatic	Included	Not Included
10101736	1	1-1/4"	Included	5	(1) 2", (4) 1"	Not Included	115-Volt AC	Not Included	Included
10108811	1	1-1/4"	Included	5	(1) 2", (4) 1"	Not Included	230-Volt AC	Not Included	Included

* Inlet fittings include 1-1/4" 4-Lug Female Coupling.



**Marco® 250 CFM Aftercooler
with Moisture Separator – Pneumatic**



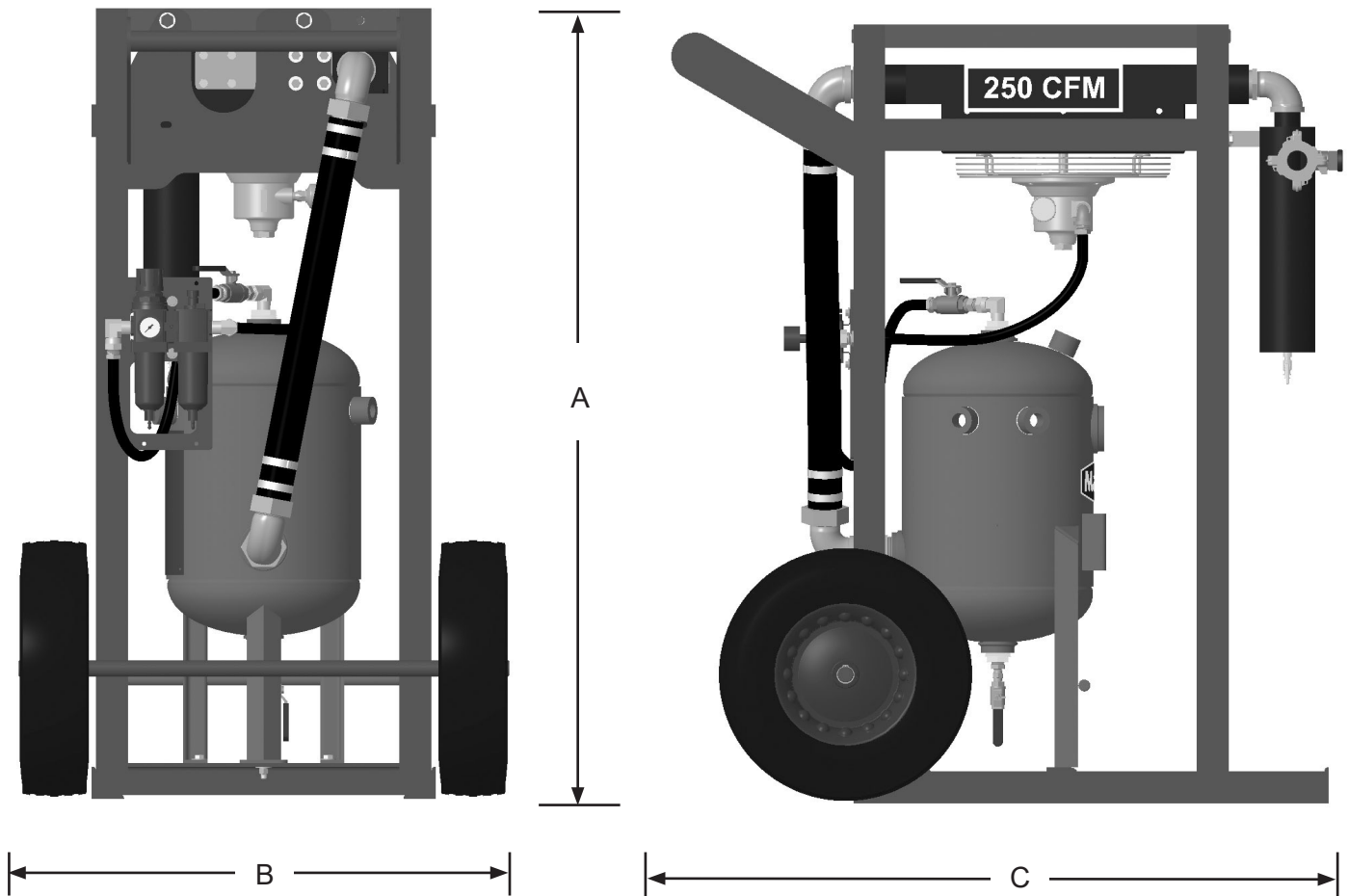
**Marco® 250 CFM Aftercooler
with Moisture Separator – Electric**

SPECIFICATIONS

Lubrication: SAE 10 oil or Air Tool Anti-freeze Lubricant

Empty Weight: 385 Pounds

Overall Dimensions: A: 49 1/4"
B: 30 1/2"
C: 42 1/2"



Pneumatic model shown, Electric model is has same dimensions.

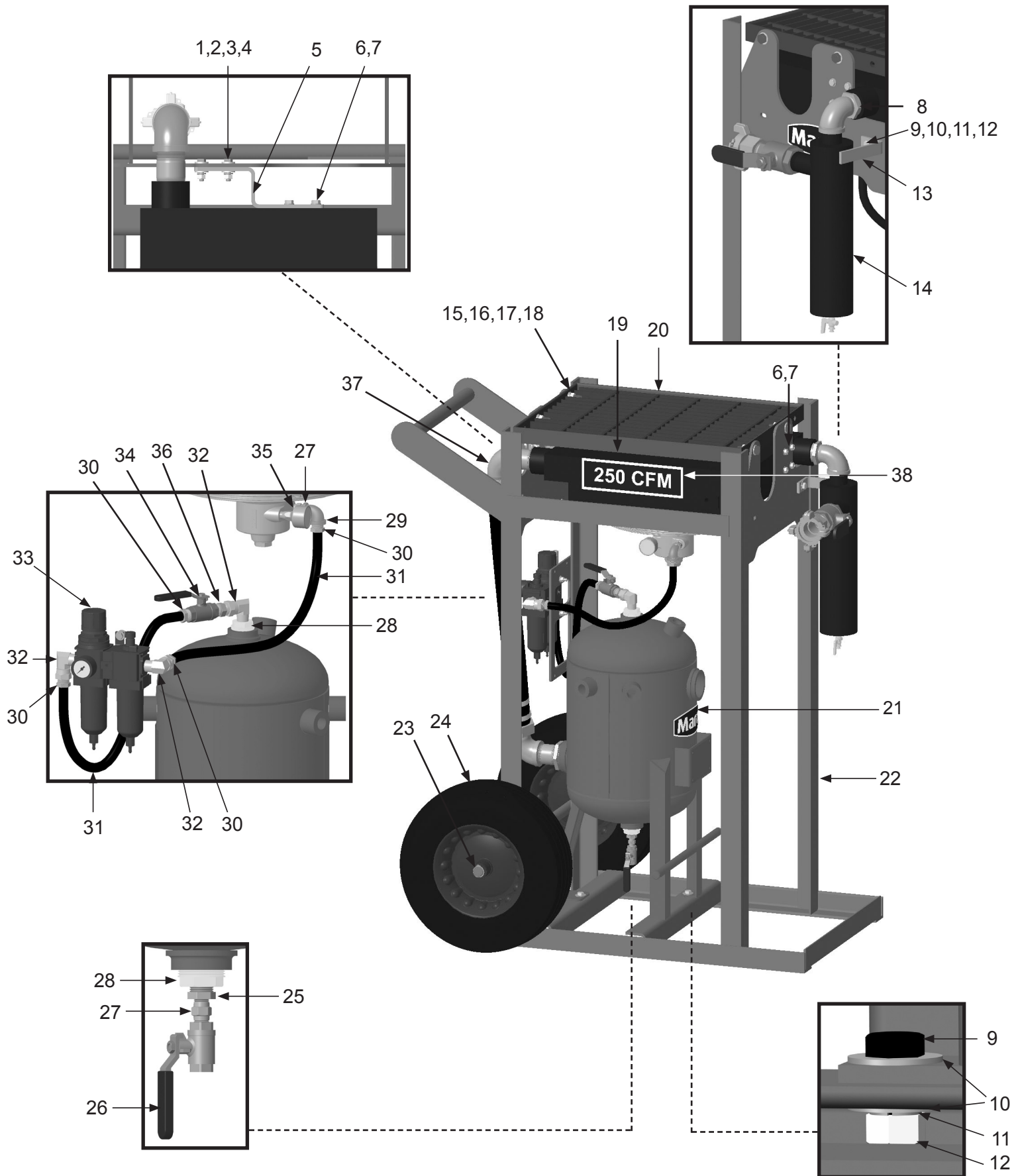
PART NUMBERS AND SCHEMATICS

Marco® 250 CFM Cart Mounted Aftercooler With Moisture Separator –Pneumatic

Item #	Part #	Description
Fig. 1		
—	10101340	Marco® 250 CFM Aftercooler with Moisture Separator – Pneumatic
1	1014019	5/16-18 x 1-1/4" Hex Bolt <i>(Four Required)</i>
2	10L805003	5/16" Flat Washer <i>(Eight Required)</i>
3	10L805014	5/16" Lock Washer <i>(Four Required)</i>
4	1035046	5/16-18 Nut <i>(Four Required)</i>
5	10108979	Adapter Bracket
6	10106878	M8 x 1.25 x 20MM Bolt <i>(Eight Required)</i>
7	1014017	1/4" Flat Washer <i>(12 Required)</i>
8	1011501	1-1/2" to 1-1/4" NPT Bushing
9	10101059	3/8-6 x 1-1/4" Galvanized Bolt <i>(Four Required)</i>
10	10101942	3/8" Galvanized Flat Washer <i>(Eight Required)</i>
11	10L805015	3/8" Lock Washer <i>(Four Required)</i>
12	10101938	3/8-16 Hex Nut <i>(Four Required)</i>
13	10108980	Moisture Separator Stop Bracket
14	—	1-1/4" Junior Extractor Moisture Separator Assembly <i>(See Fig. 7)</i>
15	10101943	1/2-13 x 1-3/4" Hex Bolt <i>(Four Required)</i>
16	10100674	1/2" Flat Washer <i>(Eight Required)</i>
17	10100675	1/2" Split Lock Washer <i>(Four Required)</i>
18	10101941	1/2-13 Hex Nut <i>(Four Required)</i>
19	10AKGCC2002	250 CFM Aftercooler - Pneumatic—Complete <i>(See Fig. 3)</i>
20	10101271	Aftercooler Protective Grate
21	10101318	800 CFM 6-Outlet Aftercooler Tank
22	10108972	Frame
23	1006205	Wheel Clip <i>(Four Required)</i>
24	1006064	Wheel <i>(Two Required)</i>
25	1011818	1/2" to 1/4" NPT Bushing
26	1080050	1/4" NPT Full Port Ball Valve
27	1017019	1/4" NPT Hex Nipple <i>(Two Required)</i>
28	1011820	1-1/4" to 1/2" NPT Bushing <i>(Two Required)</i>
29	10101185	1/2" x 1/4" NPT 90° Elbow
30	10PAF050	1/2" Push-on Air Hose Fitting <i>(Four Required)</i>
31	10AH012	1/2" I.D. Air Hose <i>(Per Foot)</i>
32	10SAP1290	1/2" NPT 90° Swivel <i>(Three Required)</i>
33	—	Air Filter/Regulator/Lubricator with Pressure Gauge <i>(See Fig. 6)</i>
34	10L363	1/2" NPT Full Port Ball Valve
35	10101784	Muffler
36	20100677	1/2" NPT Hex Nipple
37	—	Transfer Hose Assembly <i>(See Fig. 5)</i>
38	1094539	250 CFM Decal <i>(Two Required)</i>
—	1091017	Hazard Identification Tag
—	106M091	Part Numbers and Schematics Guide – Marco® 250 CFM Aftercooler with Moisture Separator
—	1090091	Operator's Manual – Marco® 250 CFM Aftercooler with Moisture Separator

PART NUMBERS AND SCHEMATICS

Figure 1: Marco® 250 CFM Cart Mounted Aftercooler With Moisture Separator – Pneumatic



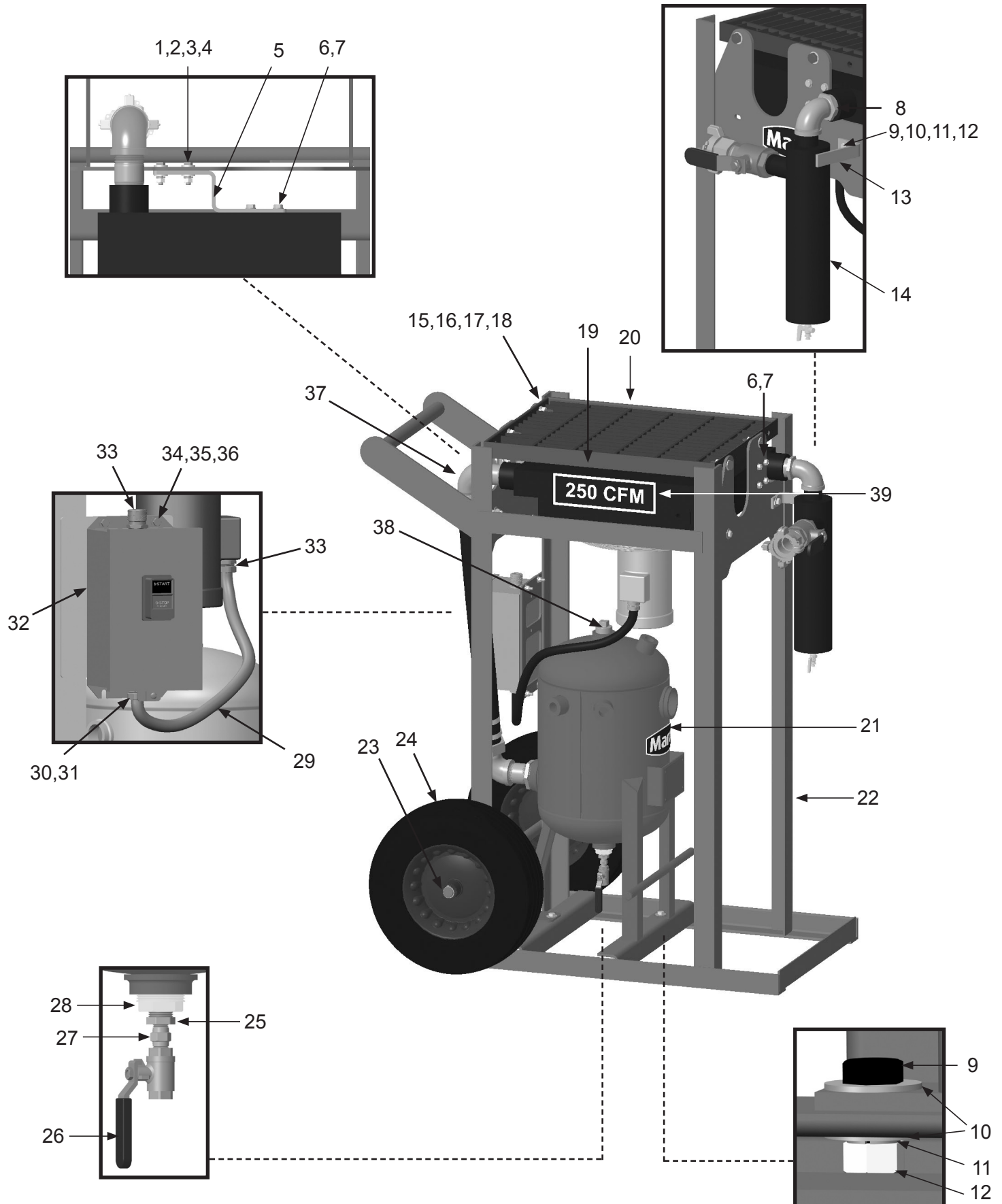
PART NUMBERS AND SCHEMATICS

Marco® 250 CFM Cart Mounted Aftercooler With Moisture Separator – Electric

Item #	Part #	Description
Fig. 2		
—	10101736	Marco® 250 CFM Aftercooler with Moisture Separator – 115-Volt Electric
—	10108811	Marco® 250 CFM Aftercooler with Moisture Separator – 230-Volt Electric
1	1014019	5/16-18 x 1-1/4" Hex Bolt <i>(Four Required)</i>
2	10L805003	5/16" Flat Washer <i>(Eight Required)</i>
3	10L805014	5/16" Lock Washer <i>(Four Required)</i>
4	1035046	5/16-18 Nut <i>(Four Required)</i>
5	10108979	Adapter Bracket
6	10106878	M8 x 1.25 x 20MM Bolt <i>(Eight Required)</i>
7	1014017	1/4" Flat Washer <i>(16 Required)</i>
8	1011501	1-1/2" to 1-1/4" NPT Bushing
9	10101059	3/8-6 x 1-1/4" Galvanized Bolt <i>(Four Required)</i>
10	10101942	3/8" Galvanized Flat Washer <i>(Eight Required)</i>
11	10L805015	3/8" Lock Washer <i>(Four Required)</i>
12	10101938	3/8-16 Hex Nut <i>(Four Required)</i>
13	10108980	Moisture Separator Stop Bracket
14	—	1-1/4" Junior Extractor Moisture Separator Assembly <i>(See Fig. 7)</i>
15	10101943	1/2-13 x 1-3/4" Hex Bolt <i>(Four Required)</i>
16	10100674	1/2" Flat Washer <i>(Eight Required)</i>
17	10100675	1/2" Split Lock Washer <i>(Four Required)</i>
18	10101941	1/2-13 Hex Nut <i>(Four Required)</i>
19	10AKGCC2001	250 CFM Aftercooler - 115-Volt Electric—Complete <i>(See Fig. 3)</i>
20	10101271	Aftercooler Protective Grate
21	10101318	800 CFM 6-Outlet Aftercooler Tank
22	10108972	Frame
23	1006205	Wheel Clip <i>(Four Required)</i>
24	1006064	Wheel <i>(Two Required)</i>
25	1011818	1/2" to 1/4" NPT Bushing
26	1080050	1/4" NPT Full Port Ball Valve
27	1017019	1/4" NPT Hex Nipple
28	1011820	1-1/4" to 1/2" NPT Bushing
29	20RSEL050UL	1/2" UL/UA Seal-Tite Conduit <i>(Per Foot)</i>
30	20101299	3/4" NPT Cord Grip
31	10108844	3/4" x 1/2" Reducing Washer <i>(Two Required)</i>
32	10101760	Motor Starter —Single Phase
33	20RST50	1/2" Straight Conduit Connector <i>(Two Required)</i>
34	1012154	1/4-20 x 1" Hex Bolt Zinc <i>(Four Required)</i>
35	1014017	1/4" Flat Washer Zinc <i>(Eight Required)</i>
36	10101939	1/4-20 Hex Lock Nut <i>(Four Required)</i>
37	—	Transfer Hose Assembly <i>(See Fig. 5)</i>
38	1011902	1-1/4" NPT Plug
39	1094539	250 CFM Decal <i>(Two Required)</i>
—	10108795	Thermal Unit - Full Load Current 6.36 - 7.08 Amps <i>(For use with 10101736)</i>
—	10108793	Thermal Unit - Full Load Current 3.38 - 3.94 Amps <i>(For use with 10108811)</i>
—	1091017	Hazard Identification Tag
—	106M091	Part Numbers and Schematics Guide – Marco® 250 CFM Aftercooler with Moisture Separator
—	1090091	Operator's Manual – Marco® 250 CFM Aftercooler with Moisture Separator

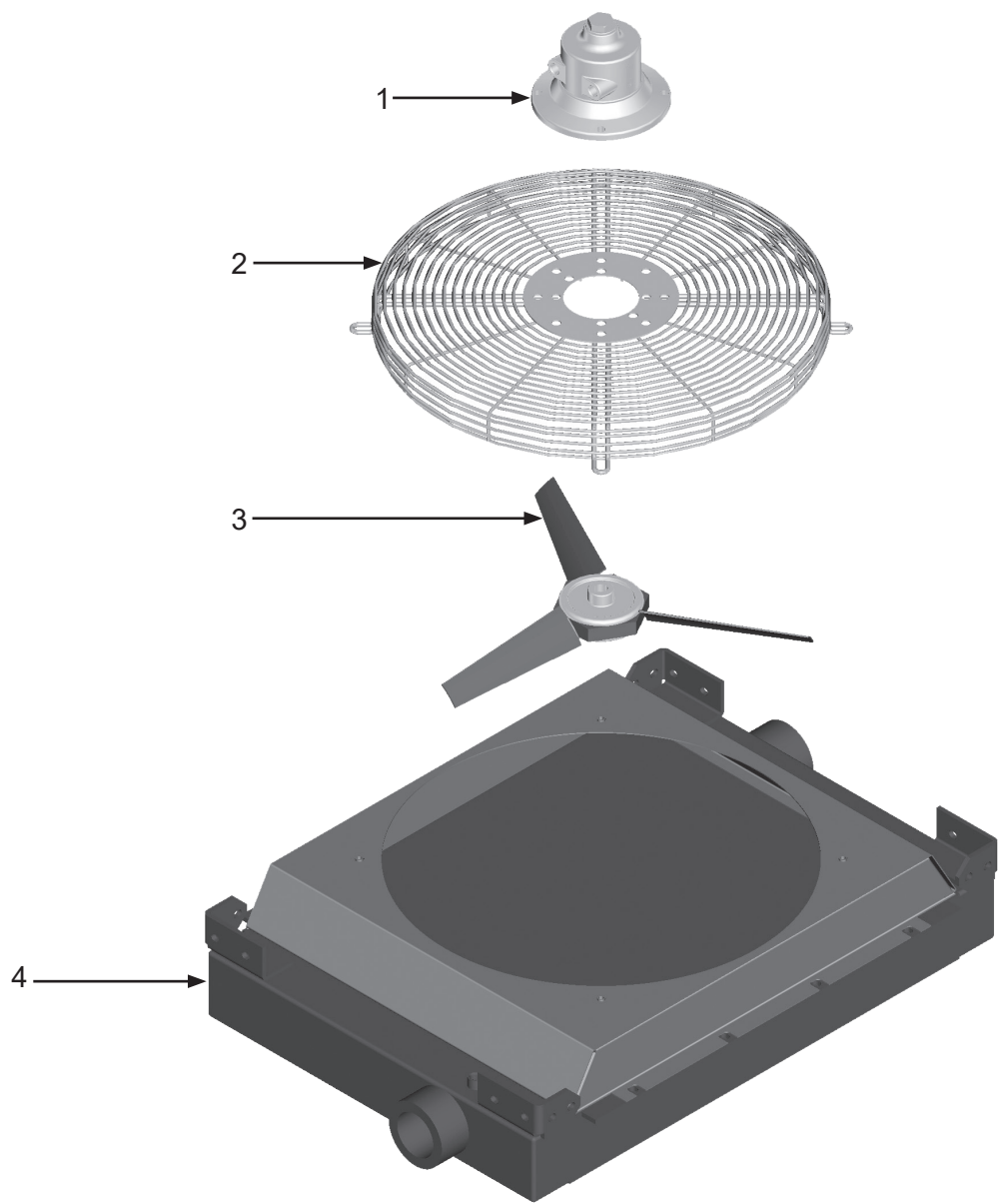
PART NUMBERS AND SCHEMATICS

Figure 2: Marco® 250 CFM Cart Mounted Aftercooler With Moisture Separator – Electric



PART NUMBERS AND SCHEMATICS

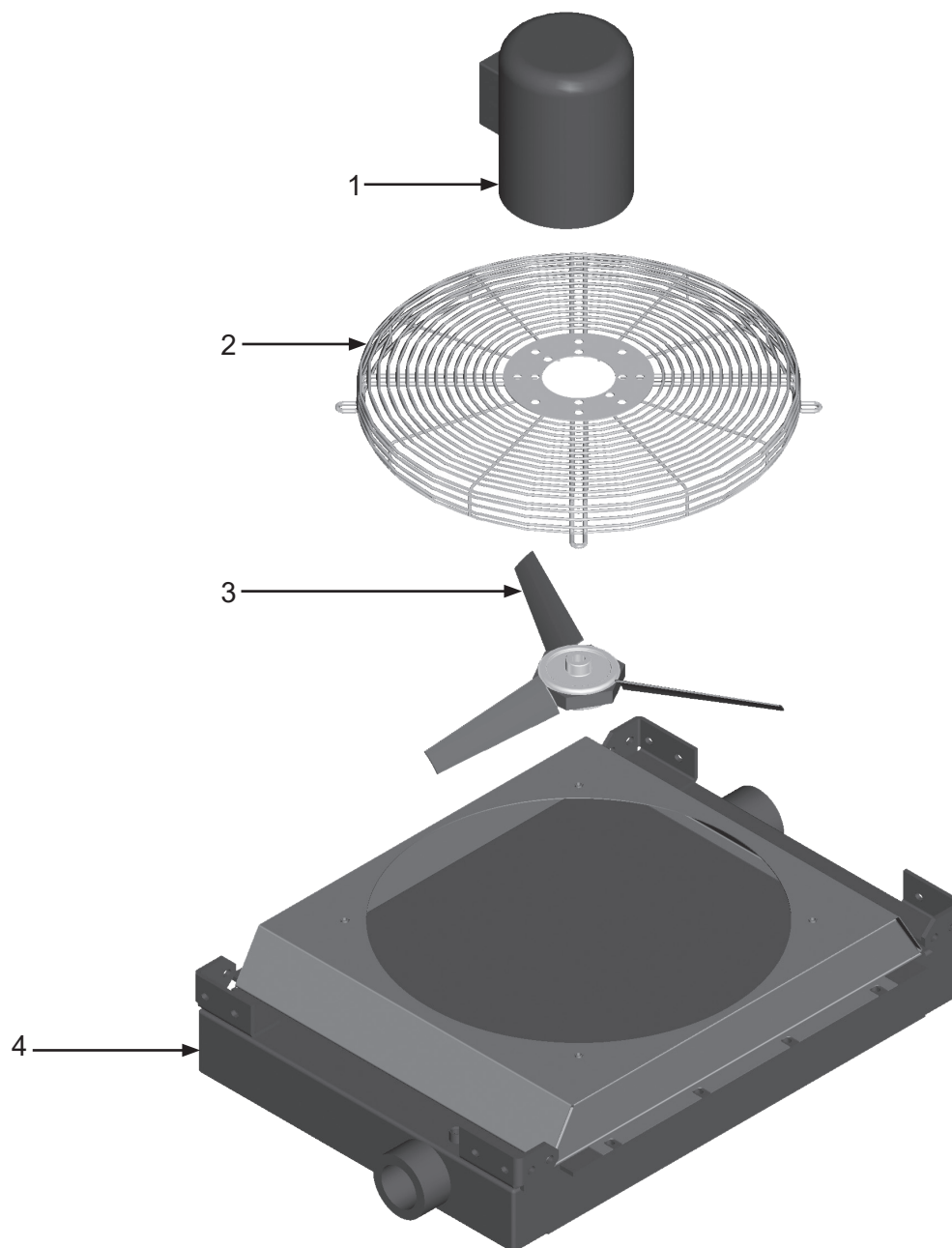
Figure 3: Aftercooler Assembly – Pneumatic



Item #	Part #	Description
Fig. 3		
	10AKGCC2002	250 CFM Aftercooler – Pneumatic – Complete
1	10101780	Air Motor
2	10101783	Fan Guard
3	10101782	Fan Blade Assembly
4	10101779	Aftercooler Core
—	10101784	Muffler for Air Motor
—	10101781	Air Motor Service Kit <i>Includes: Shaft Seal, Drive End Bearing, Dead End Bearing, Vanes (Quantity of Four), Push Pins (Quantity of Four), Vane Springs (Quantity of Four), Shim, End Cap Gasket, Muffler Cartridge, and Muffler Felt</i>

PART NUMBERS AND SCHEMATICS

Figure 4: Aftercooler Assembly – Electric



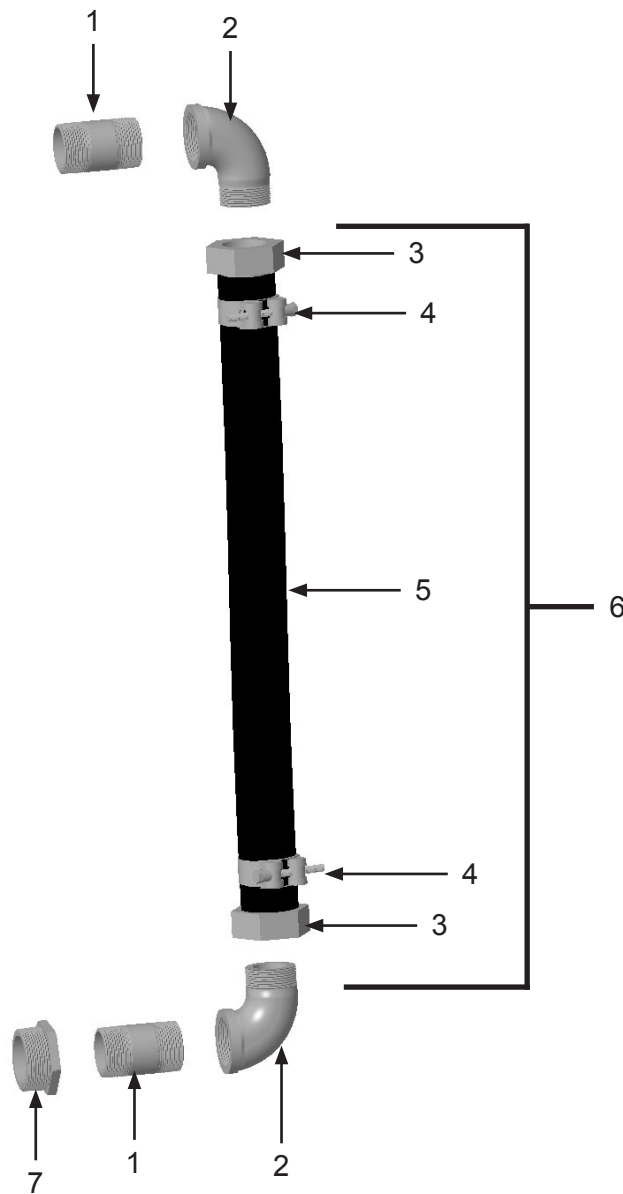
Item #	Part #	Description
--------	--------	-------------

Fig. 4

	10AKGCC2001	250 CFM Aftercooler – Electric – Complete
1	10101785	Electric Motor – (115 Volt to 208-230 Volt) – Single Phase
2	10101783	Fan Guard
3	10101782	Fan Blade Assembly
4	10101779	Aftercooler - Core Only

PART NUMBERS AND SCHEMATICS

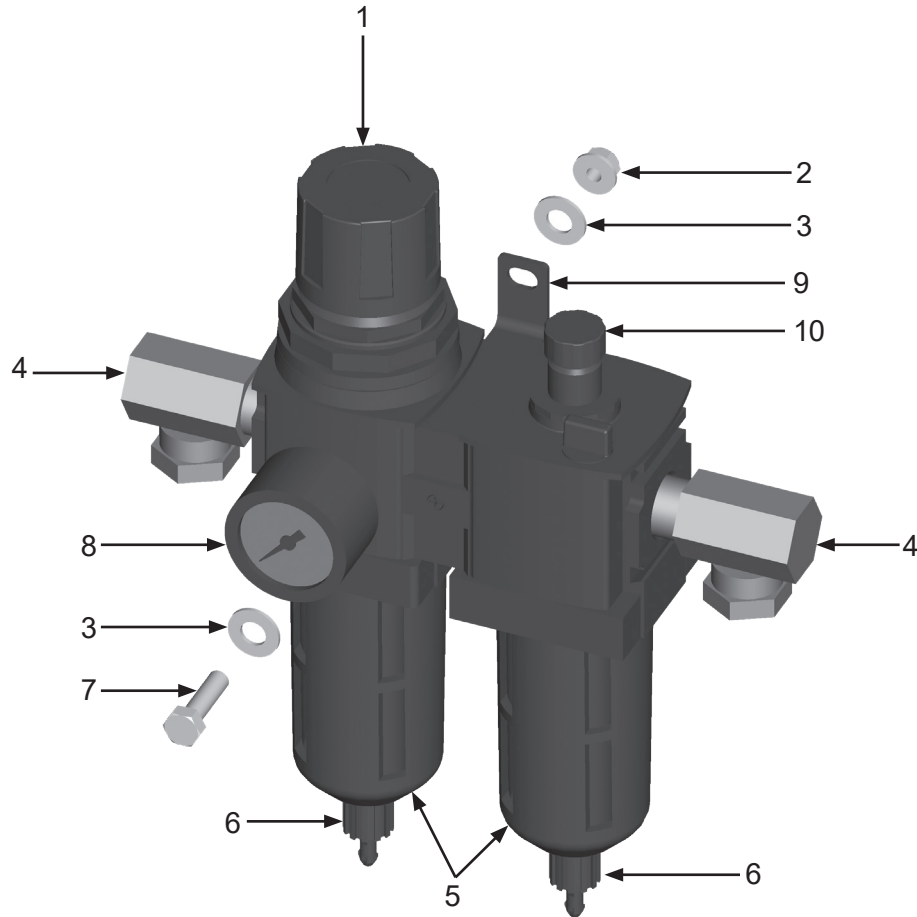
Figure 5: Transfer Hose Assembly



Item #	Part #	Description
Fig. 5		
1	1011203	1-1/2" x 3" NPT Nipple <i>(Two Required)</i>
2	1011839	1-1/2" NPT 90° Street Elbow <i>(Two Required)</i>
3	10SFE4	1-1/2" Female Swivel Air Hose End <i>(Two Required)</i>
4	10103738	1-1/2" T-Bolt Hose Clamp <i>(Two Required)</i>
5	10AH112B	1-1/2" I.D. Air Hose
6	1006312	1-1/2" Pusher Line Kit <i>Includes Item #: 3, 4 and 5 (Quantity of Three Feet)</i>
7	1001868	2" x 1-1/2" Hex Bushing

PART NUMBERS AND SCHEMATICS

Figure 6: Air Regulator/Lubricator



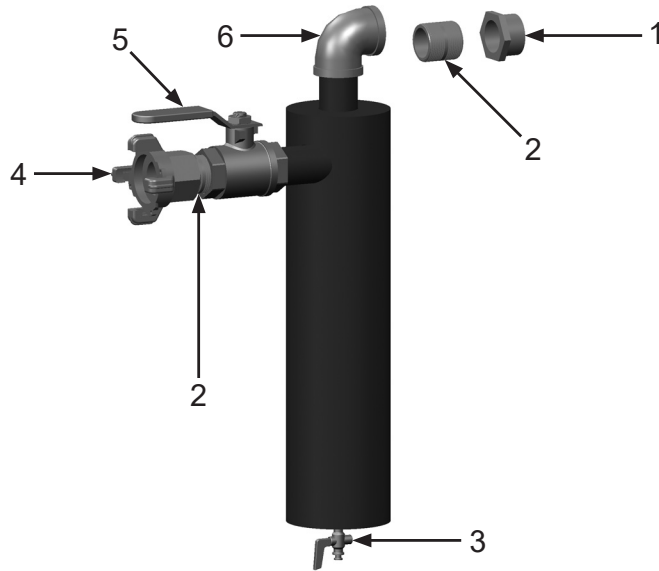
Item #	Part #	Description
--------	--------	-------------

Fig. 6

1	10101232	Filter/Regulator/Lubricator with Pressure Gauge
2	1012323	1/4" Nylon Insert Lock Nut (<i>Two Required</i>)
3	1014017	1/4" Flat Washer (<i>Four Required</i>)
4	10SAP1290	1/2" 90° Swivel (<i>Two Required</i>)
5	10101235	Polycarbonate Bowl - Wilkerson (<i>Two Required</i>)
	10109913	Bowl With O-Ring - Midwest Control (<i>Two Required</i>)
6	10101234	Manual Drain - Wilkerson
	10109914	Manual Drain - Midwest Control
7	1012154	1/4-20 X 1" Bolt (<i>Two Required</i>)
8	1028606	Pressure Gauge – 0-160 PSI 1/4" – Back Mount
9	10109907	Quick Clamp with Bracket - Midwest Control
10	10109912	Sight Dome - Midwest Control
–	10101233	Filter Element - Wilkerson
	10109915	Filter Element 40 Micron - Midwest Control
–	1070517	Pneumatic Air Tool Oil–32 oz. bottle





PART NUMBERS AND SCHEMATICS






Figure 7: 1-1/4" Junior Extractor Moisture Separator Assembly








Item #	Part #	Description
Fig. 7		
—	10101314	Marco® 1-1/4" Junior Extractor Moisture Separator
1	1011501	1-1/2" x 1-1/4" Bushing
2	1011201	1-1/4" NPT Close Nipple (<i>Two Required</i>)
3	1012101	1/4" NPT Brass Petcock
4	10ME3	4-lug Air Hose Fitting - 1-1/4" NPT (F)
5	1011602	1-1/4" NPT Full Port Ball Valve
6	1006204	1-1/4" NPT 90° Elbow
—	106M349	Part Numbers and Schematics Guide – Marco® Extractor Moisture Separators

OPTIONAL ACCESSORIES

		AIRFLOW SHUTOFF KITS – LUG FITTINGS			
	Part Numbers	Pipe String I.D.	Close Nipple	Full Port Ball Valve	Coupling
	10103731	1"	1012151	1011601	10ME2
	10103732	1-1/4"	1011201 (Quantity of Two)	1011602	10ME3
	10103733	1-1/2"	1014015 (Quantity of Two)	1011603	10ME4
	10103734	2"	1001806 (Quantity of Two)	1011604	10ME5

		AIRFLOW SHUTOFF KITS – HAMMERLOCK FITTINGS			
	Part Numbers	Pipe String I.D.	Close Nipple	Full Port Ball Valve	Coupling Spud
	10103830	1"	10102151 (Quantity of Two)	1011601	10DXGB13
	10103831	1-1/4"	1011201 (Quantity of Two)	1011602	10DXGB18
	10103832	1-1/2"	1014015 (Quantity of Two)	1011603	10DXGB23
	10103833	2"	1001806 (Quantity of Two)	1011604	10DXGB28
	10103934	3"	10101040 (Quantity of Two)	1011608	10GB38

OPTIONAL ACCESSORIES

	Part Numbers	GALVANIZED SQUARE HEAD PIPE PLUGS
		Size
	1011901	1"
	1011902	1-1/4"
	1011101	1-1/2"
	1011823	2"
	10101034	3"

Part Numbers	LUBRICATION
1070517	Pneumatic Air Tool Oil - 32 oz. bottle

MAINTENANCE NOTES

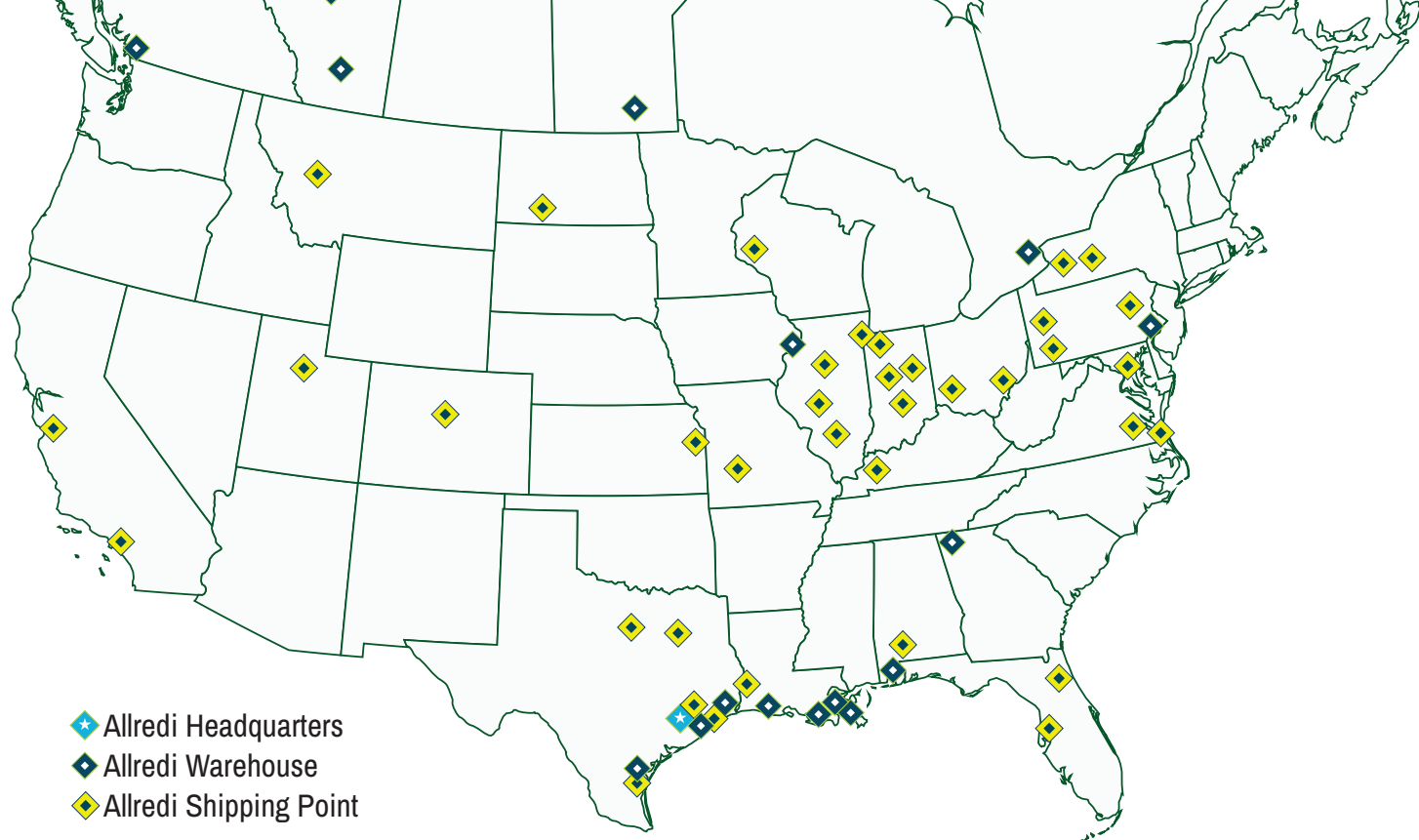
[illegible]

MAINTENANCE NOTES

[illegible]

MAINTENANCE NOTES

[illegible]



ALLREDI THERE

Serving these industries: Bridge, Pipeline, Tank & Tower, Concrete Services, Rail, Shipyard & Marine, Pools & Fountains, and Foundry

UNITED STATES

Pasadena, TX (*Headquarters*)
844.361.7038

Beaumont, TX
409.722.1284

Bristol, PA
215.826.8080

Corpus Christi, TX
361.887.2038

Davenport, IA
563.324.2519

Deer Park, TX
(*Service & Rental Location*)
281.930.0905

Duluth, GA
800.535.4564

Gonzales, LA
225.647.7575

Harvey, LA
504.367.8090

Houma, LA
985.580.4273

Lafayette, LA
337.267.1440

Theodore, AL
251.338.7525

CANADA

Calgary, Alberta
403.279.1924

Coquitlam, BC
604.464.6979

Edmonton, Alberta
780.468.2588 (Manus)
780.425.5510 (Mod-U-Blast)

Hamilton, Ontario
905.527.6000 / 888.794.5665

Mississauga, Ontario
905.890.5837

Winnipeg, Manitoba
204.256.3324

800.BLAST.IT / WWW.ALLREDI-US.COM

Allredi™ and Marco® are registered trademarks of Allredi, LLC.
All other brand names or marks are used for identification purposes and are trademarks of their respective owners.



Literature #106M091_11/10/2023