



MARCO® 250 CFM CART-MOUNTED AFTERCOOLER



PART NUMBERS AND SCHEMATICS GUIDE

Company Profile

Allredi was formed in the early 2020, when two of the largest distributors in the blasting, coating, safety, and environmental industry, APE Companies and Marco Group International, joined forces. While the qualities both companies are known for have not changed, a lot about our business is new. New abilities. New agilities. New ways to help you win. This calls for a new name, Allredi.

This name exemplifies what we have become. It is completely oriented to the needs of our customers. To your needs. It says that when you call us for anything – products, service, expert advice, anything – you can consider it done. Or even better, Allredi done.

We are your right-now supplier. From skills to SKUs, we deliver the goods fast. So you can be more agile every minute, every day. This is who we are. This is what our new name means. Go ahead and expect excellence, because we're bringing it.

Our Mission and Vision

To be the industry's preferred partner in surface preparation solutions through unrivaled technical expertise, customer experience, product availability, and tailored service offerings.

The Allredi Difference

- **Industry Experience** – With Allredi on your team, you have access to expertise which can only come from decades of industry leadership. We have organized our engineering department, production specialists, customer operations, and safety support into a "Center of Competence." As an Allredi customer, you have access to hundreds of years of cumulative experience related to your operations.
- **Manufacturing Excellence** – Allredi is a U.S. based manufacturer of equipment for the Surface Preparation and Protective Coatings industries. Allredi's engineers benchmark the industry to ensure that we design and manufacture superior products that set the "Gold Standard" for performance, safety, and quality.
- **Legendary Customer Service** – Allredi's legendary customer service team is staffed by friendly, highly-trained individuals who are focused on providing the highest level of product support, order accuracy, and customer satisfaction.
- **Product Availability** – We stock over 10,000 SKU's and have over 45 shipping locations to serve North American and International markets for all major brands of blasting, coating, environmental, and safety equipment. Allredi is your right-now supplier, so you can keep your projects moving. From our foundation of strong relationships, we have built a nationwide network that puts vast inventory and ready service close to our customers. We provide advanced expertise, and we deliver the goods fast – so you can easily access the products and services you need to be more agile every minute, every day.
- **Technology Leadership** – Our website provides: Operator's Manuals, Part Numbers and Schematics Guides, SDS information, and key product features and specifications, providing access to information 24/7.

TABLE OF CONTENTS

Company Profile	2
Table of Contents	3
Part Numbers	4
Specifications	5
Part Numbers and Schematics	6-13
Marco® 250 CFM Cart Mounted Aftercooler—Pneumatic	6-7
Marco® 250 CFM Cart Mounted Aftercooler—Electric	8-9
Aftercooler Assembly—Pneumatic	10
Aftercooler Assembly—Electric	11
Air Regulator/Lubricator	12
1-1/4" Junior Extractor Moisture Separator Assembly	13
Optional Accessories	14
Maintenance Notes	15

PART NUMBERS

MARCO® 250 CFM CART MOUNTED AFTERCOOLER									
Part Numbers	Inlet			Outlet			Power Source	Filter, Regulator, and Lubricator	Electric Starter Box
	Inlet Quantity	Inlet Size	Fittings	Outlet Quantity	Outlet Size	Fittings			
10101341	1	1-1/4"	Included	1	1-1/2"	Included	Pneumatic	Included	Not Included
10101737	1	1-1/4"	Included	1	1-1/2"	Included	115-Volt AC	Not Included	Included
10108812	1	1-1/4"	Included	1	1-1/2"	Included	230-Volt AC	Not Included	Included

* Inlet fittings include 1-1/4" 4-Lug Female Coupling. Outlet fittings include 1-1/2" 4-Lug Female Coupling.



**Marco® 250 CFM Cart-Mounted
Aftercooler – Pneumatic**



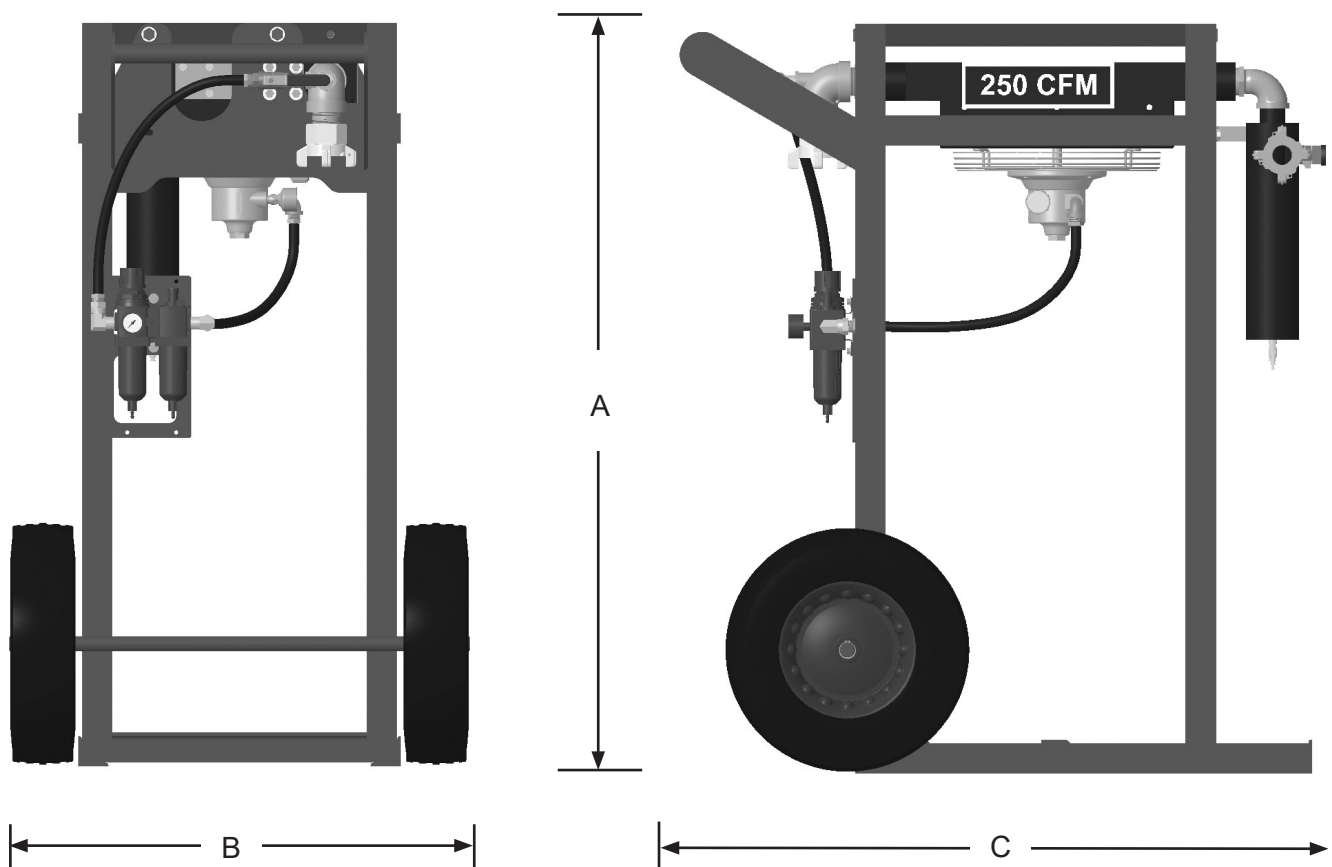
**Marco® 250 CFM Cart-Mounted
Aftercooler – Electric**

SPECIFICATIONS

Lubrication: SAE 10 oil or Air Tool Anti-freeze Lubricant

Empty Weight: 300 Pounds

Overall Dimensions: A: 49 1/4"
B: 30 1/2"
C: 42 1/2"



Pneumatic model shown, Electric model is has same dimensions.

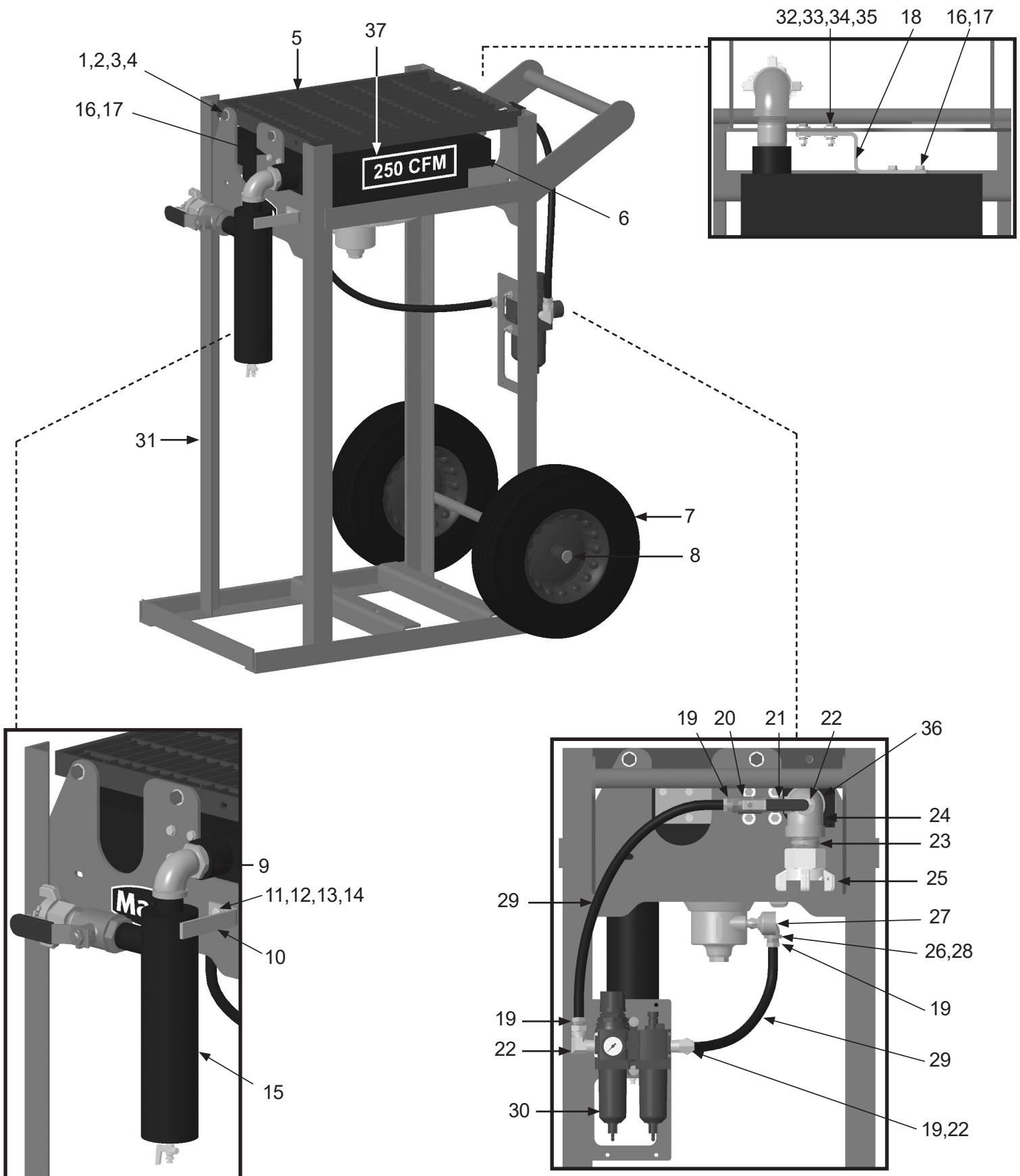
PART NUMBERS AND SCHEMATICS

Marco® 250 CFM Cart Mounted Aftercooler – Pneumatic

Item #	Part #	Description
Fig. 1		
—	10101341	Marco® 250 CFM Cart-Mounted Aftercooler – Pneumatic – Complete
1	10101943	1/2-13 x 1-3/4" Hex Bolt (<i>Four Required</i>)
2	10100674	1/2" Flat Washer (<i>Eight Required</i>)
3	10100675	1/2" Split Lock Washer (<i>Four Required</i>)
4	10101941	1/2-13 Hex Nut (<i>Four Required</i>)
5	10101271	Aftercooler Protective Grate
6	10AKGCC2002	250 CFM Aftercooler – Pneumatic – Complete (<i>see Fig. 3</i>)
7	1006064	Wheel (<i>Two Required</i>)
8	1006205	Wheel Clip (<i>Four Required</i>)
9	1011501	1-1/2" to 1-1/4" NPT Bushing
10	10108980	Moisture Separator Stop Bracket
11	10101059	3/8-16 x 1-1/4" Hex Bolt
12	10101942	3/8" Flat Washer (<i>Two Required</i>)
13	10101938	3/8-16 Hex Nut
14	10L805015	3/8" Galvanized Lock Washer
15	—	1-1/4" Junior Extractor Moisture Separator Assembly (<i>See Fig. 6</i>)
16	10106878	M8 x 1.25 x 20MM Bolt (<i>Eight Required</i>)
17	1014017	1/4" Flat Washer (<i>12 Required</i>)
18	10108979	Adapter Bracket
19	10PAF050	1/2" Push-on Air Hose Fitting (<i>Four Required</i>)
20	10L363	1/2" NPT Full Port Ball Valve
21	20100677	1/2" NPT Hex Nipple
22	10SAP1290	1/2" NPT 90° Swivel (<i>Three Required</i>)
23	1014015	1-1/2" NPT Close Nipple
24	1011828	1-1/2" NPT Elbow with 1/2" Port
25	10ME4	1-1/2" Four-lug Air Fitting
26	1017019	1/4" NPT Hex Nipple
27	10101784	Muffler
28	10101185	1/2" x 1/4" NPT 90° Elbow
29	10AH012	1/2" I.D. Air Hose (<i>Per Foot</i>)
30	10101232	Air Regulator/Lubricator with Pressure Gauge (<i>See Fig. 5</i>)
31	10108972	Frame
32	1014019	5/16-18 x 1-1/4" Hex Bolt (<i>Four Required</i>)
33	10L805003	5/16" Flat Washer (<i>Eight Required</i>)
34	10L805014	5/16" Lock Washer (<i>Four Required</i>)
35	1035046	5/16-18 Nut (<i>Four Required</i>)
36	1011203	1-1/2" x 3" Nipple
37	1094539	250 CFM Decal (<i>Two Required</i>)
—	1091017	Hazard Identification Tag
—	106M097	Part Numbers and Schematics Guide – Marco® 250 CFM Cart-Mounted Aftercooler
—	1090097	Operator's Manual – Marco® 250 CFM Cart-Mounted Aftercooler

PART NUMBERS AND SCHEMATICS

Figure 1: Marco® 250 CFM Cart Mounted Aftercooler – Pneumatic



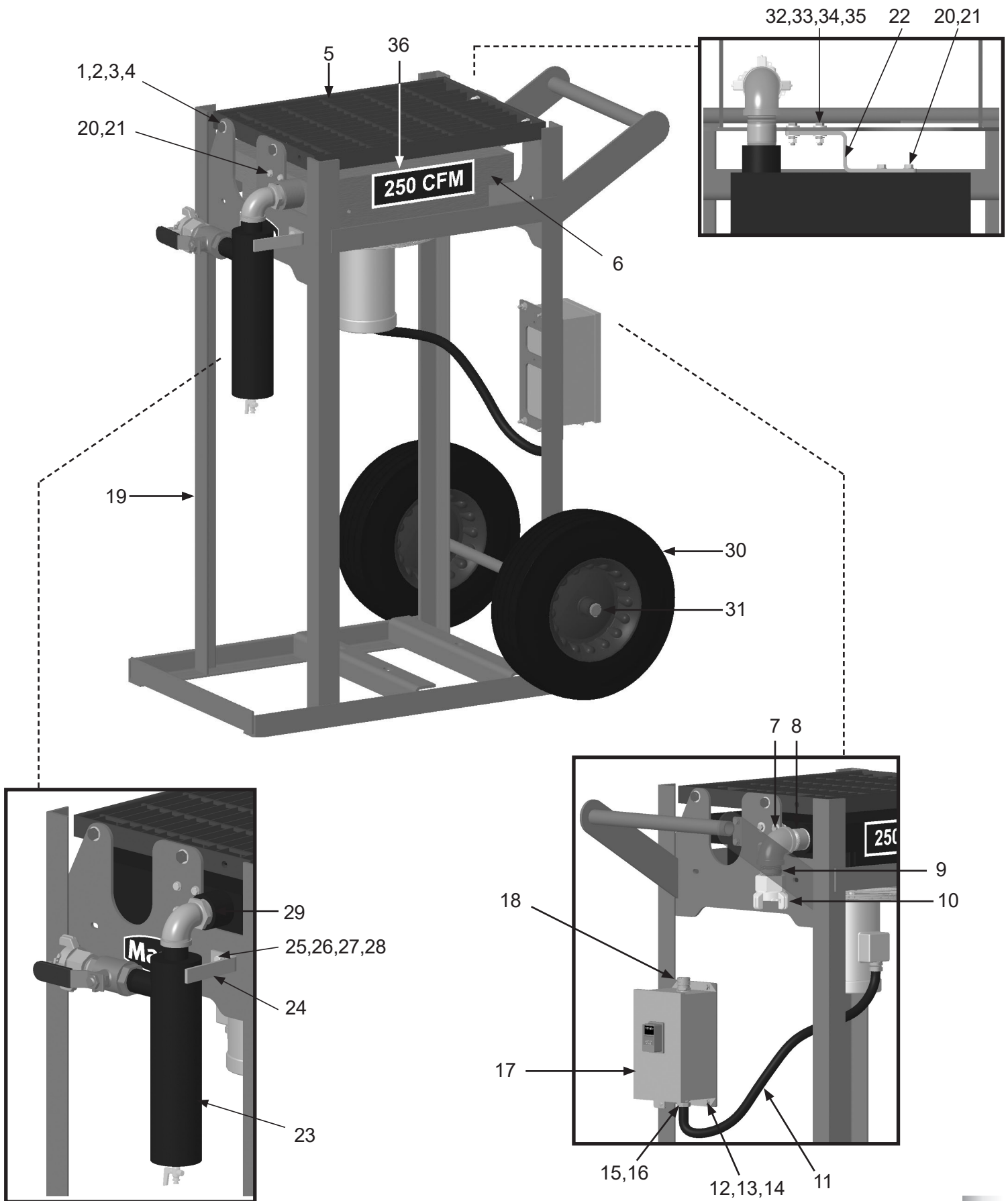
PART NUMBERS AND SCHEMATICS

Marco® 250 CFM Cart Mounted Aftercooler – Electric

Item #	Part #	Description
Fig. 2		
—	10101737	Marco® 250 CFM Cart-Mounted Aftercooler – 115-Volt Electric
—	10108812	Marco® 250 CFM Cart-Mounted Aftercooler – 230-Volt Electric
1	10101943	1/2-13 x 1-3/4" Hex Bolt <i>(Four Required)</i>
2	10100674	1/2" Flat Washer <i>(Eight Required)</i>
3	10100675	1/2" Split Lock Washer <i>(Four Required)</i>
4	10101941	1/2-13 Hex Nut <i>(Four Required)</i>
5	10101271	Aftercooler Protective Grate
6	10AKGCC2001	250 CFM Aftercooler—Electric—Complete <i>(see Fig. 4)</i>
7	1011842	1-1/2" NPT 90° Elbow
8	1011203	1-1/2" x 3" Nipple
9	1014015	1-1/2" NPT Close Nipple
10	10ME4	1-1/2" Four-Lug Air Fitting
11	20RSEL050UL	1/2" UL/UA Seal-Tite Conduit <i>(Per Foot)</i>
12	1012154	1/4-20 x 1" Hex Bolt Zinc <i>(Four Required)</i>
13	1014017	1/4" Flat Washer Zinc <i>(16 Required)</i>
14	10101939	1/4-20 Hex Lock Nut <i>(Four Required)</i>
15	20RST50	1/2" Straight Conduit Connector <i>(Two Required)</i>
16	10108844	3/4" x 1/2" Reducing Washer <i>(Two Required)</i>
17	10101760	115-Volt AC Motor Starter Box – Single Phase
18	20101299	3/4" NPT Cord Grip
19	10108972	Frame
20	10106878	M8 x 1.25 x 20MM Bolt <i>(Eight Required)</i>
21	1014017	1/4" Flat Washer <i>(12 Required)</i>
22	10108979	Adapter Bracket
23	—	1-1/4" Junior Extractor Moisture Separator Assembly <i>(See Fig. 6)</i>
24	10108980	Moisture Separator Stop Bracket
25	10101059	3/8-16 x 1-1/4" Hex Bolt
26	10101942	3/8" Flat Washer <i>(Two Required)</i>
27	10101938	3/8-16 Hex Nut
28	10L805015	3/8" Lock Washer
29	1011501	1-1/2" to 1-1/4" NPT Bushing
30	1006064	Wheel <i>(Two Required)</i>
31	1006205	Wheel Clip <i>(Four Required)</i>
32	1014019	5/16-18 x 1-1/4" Hex Bolt <i>(Four Required)</i>
33	10L805003	5/16" Flat Washer <i>(Eight Required)</i>
34	10L805014	5/16" Lock Washer <i>(Four Required)</i>
35	1035046	5/16-18 Nut <i>(Four Required)</i>
36	1094539	250 CFM Decal <i>(Two Required)</i>
—	10108795	Thermal Unit - Full Load Current 6.36 - 7.08 Amps <i>(For use with 10101737)</i>
—	10108737	Thermal Unit - Full Load Current 3.38 - 3.94 Amps <i>(For use with 10108812)</i>
—	1091017	Hazard Identification Tag
—	106M097	Part Numbers and Schematics Guide – Marco® 250 CFM Cart-Mounted Aftercooler
—	1090097	Operator's Manual – Marco® 250 CFM Cart-Mounted Aftercooler

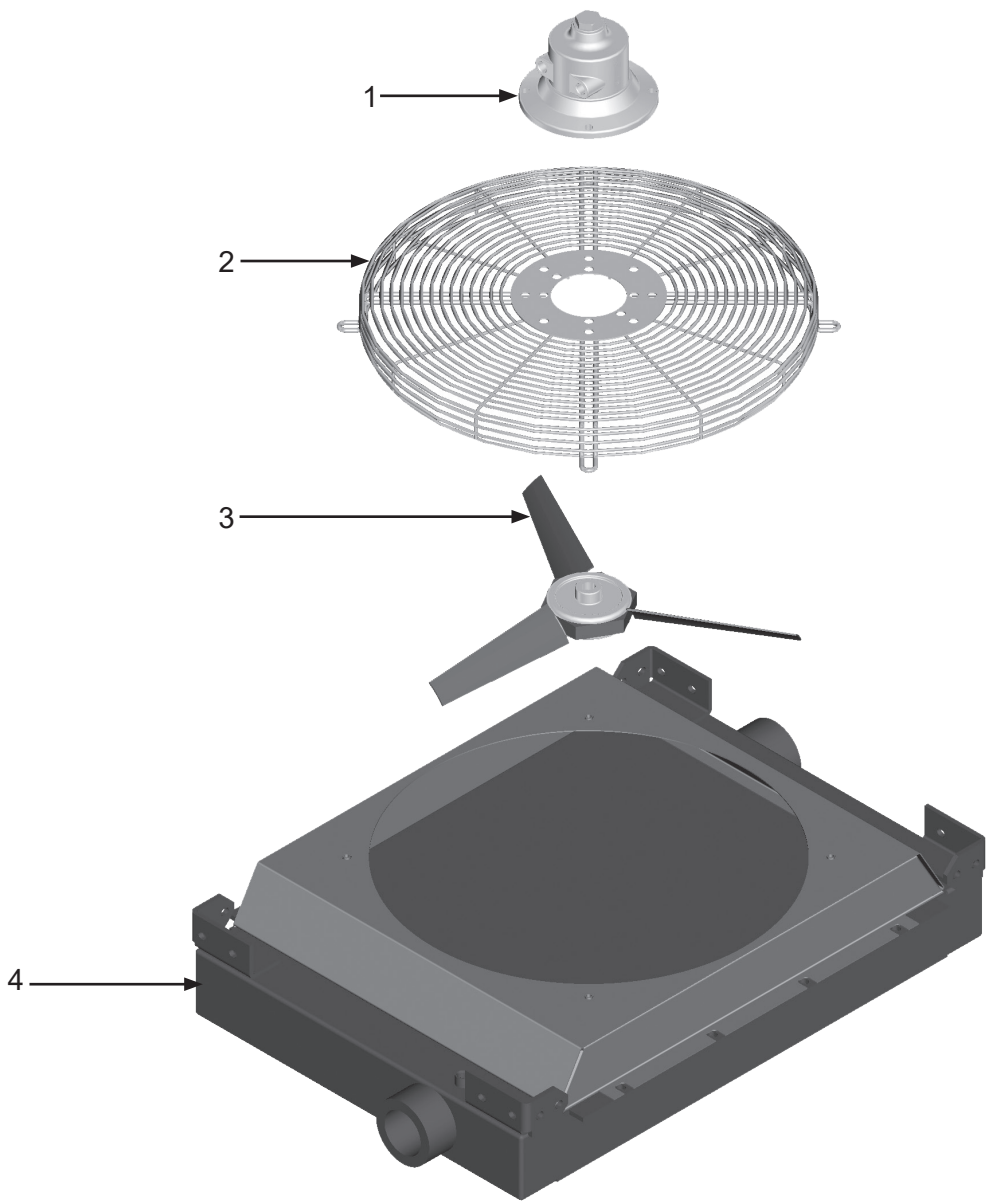
PART NUMBERS AND SCHEMATICS

Figure 2: Marco® 250 CFM Cart Mounted Aftercooler – Electric



PART NUMBERS AND SCHEMATICS

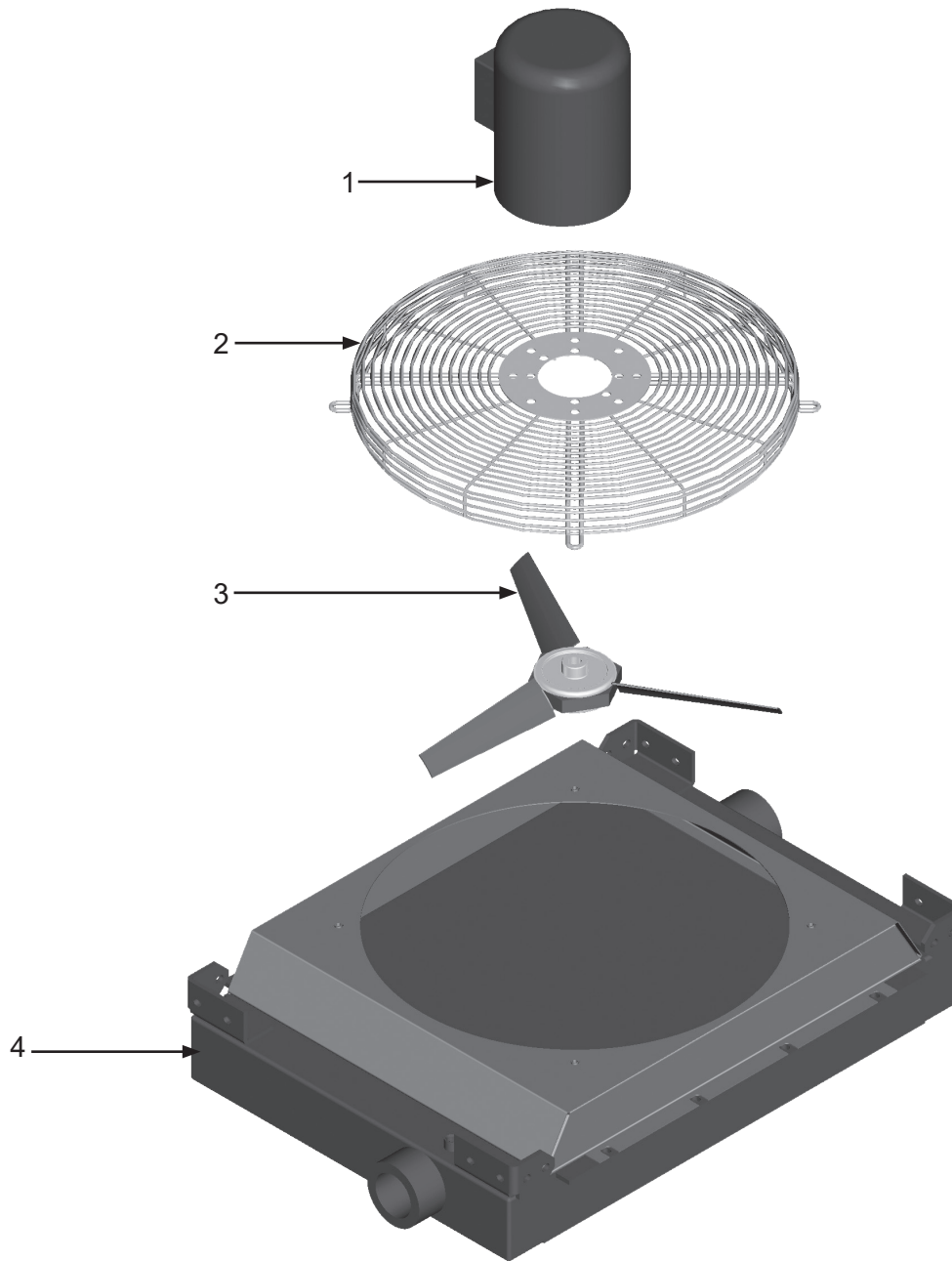
Figure 3: Aftercooler Assembly – Pneumatic



Item #	Part #	Description
Fig. 3		
—	10AKGCC2002	250 CFM Aftercooler—Pneumatic—Complete
1	10101780	Air Motor
2	10101783	Fan Guard
3	10101782	Fan Blade Assembly
4	10101779	Aftercooler Core
—	10101784	Muffler for Air Motor
—	10101781	Air Motor Service Kit <i>Includes: Shaft Seal, Drive End Bearing, Dead End Bearing, Vanes (Quantity of Four), Push Pins (Quantity of Four), Vane Springs (Quantity of Four), Shim, End Cap Gasket, Muffler Cartridge, and Muffler Felt</i>

PART NUMBERS AND SCHEMATICS

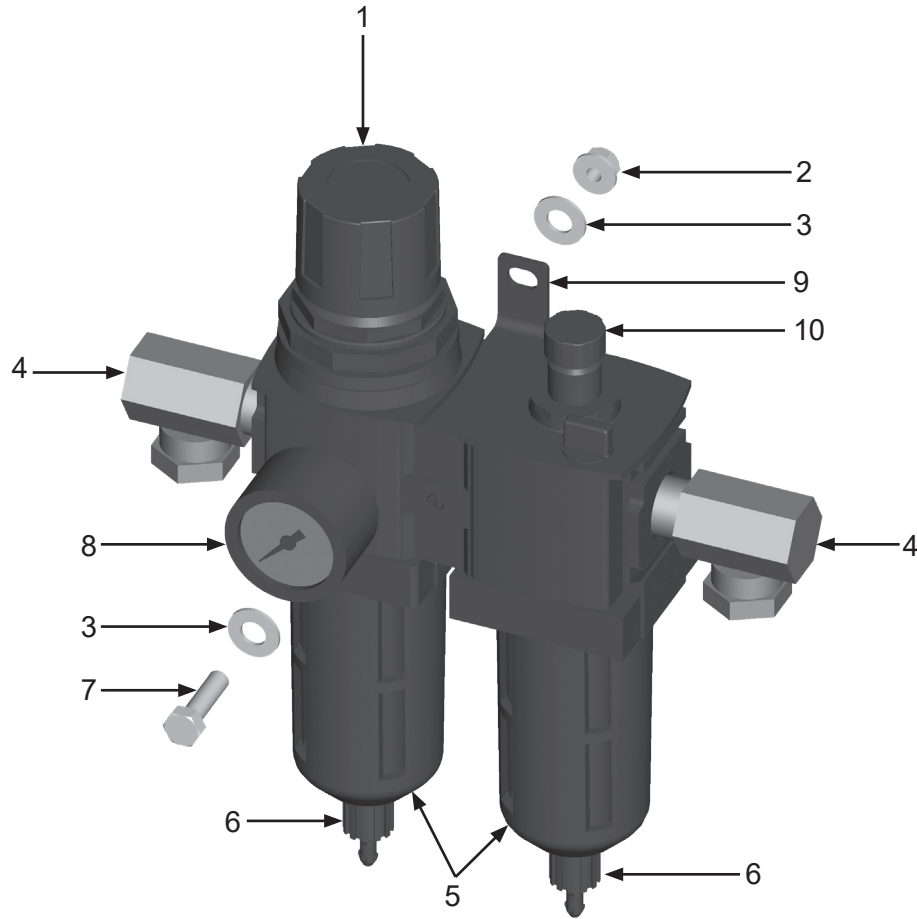
Figure 4: Aftercooler Assembly – Electric



Item #	Part #	Description
Fig. 4		
—	10AKGCC2001	250 CFM Aftercooler—Electric—Complete
1	10101785	Electric Motor – (115 Volt to 208-230 Volt) – Single Phase
2	10101783	Fan Guard
3	10101782	Fan Blade Assembly
4	10101779	Aftercooler - Core Only

PART NUMBERS AND SCHEMATICS

Figure 5: Air Regulator/Lubricator



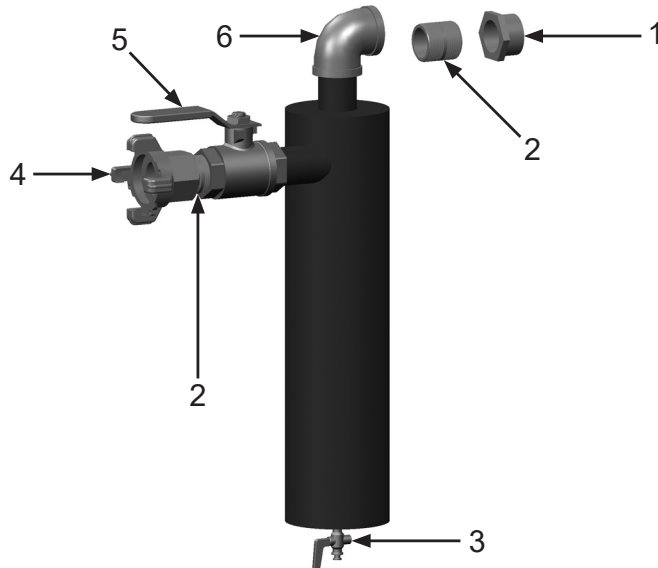
Item #	Part #	Description
--------	--------	-------------

Fig. 5

1	10101232	Filter/Regulator/Lubricator with Pressure Gauge
2	1012323	1/4" Nylon Insert Lock Nut (<i>Two Required</i>)
3	1014017	1/4" Flat Washer (<i>Four Required</i>)
4	10SAP1290	1/2" 90° Swivel (<i>Two Required</i>)
5	10101235	Polycarbonate Bowl - Wilkerson (<i>Two Required</i>)
	10109913	Bowl With O-Ring - Midwest Control (<i>Two Required</i>)
6	10101234	Manual Drain - Wilkerson
	10109914	Manual Drain - Midwest Control
7	1012154	1/4-20 X 1" Bolt (<i>Two Required</i>)
8	1028606	Pressure Gauge – 0-160 PSI 1/4" – Back Mount
9	10109907	Quick Clamp with Bracket - Midwest Control
10	10109912	Sight Dome - Midwest Control
–	10101233	Filter Element - Wilkerson
	10109915	Filter Element 40 Micron - Midwest Control
–	1070517	Pneumatic Air Tool Oil–32 oz. bottle

PART NUMBERS AND SCHEMATICS

Figure 6: 1-1/4" Junior Extractor Moisture Separator Assembly



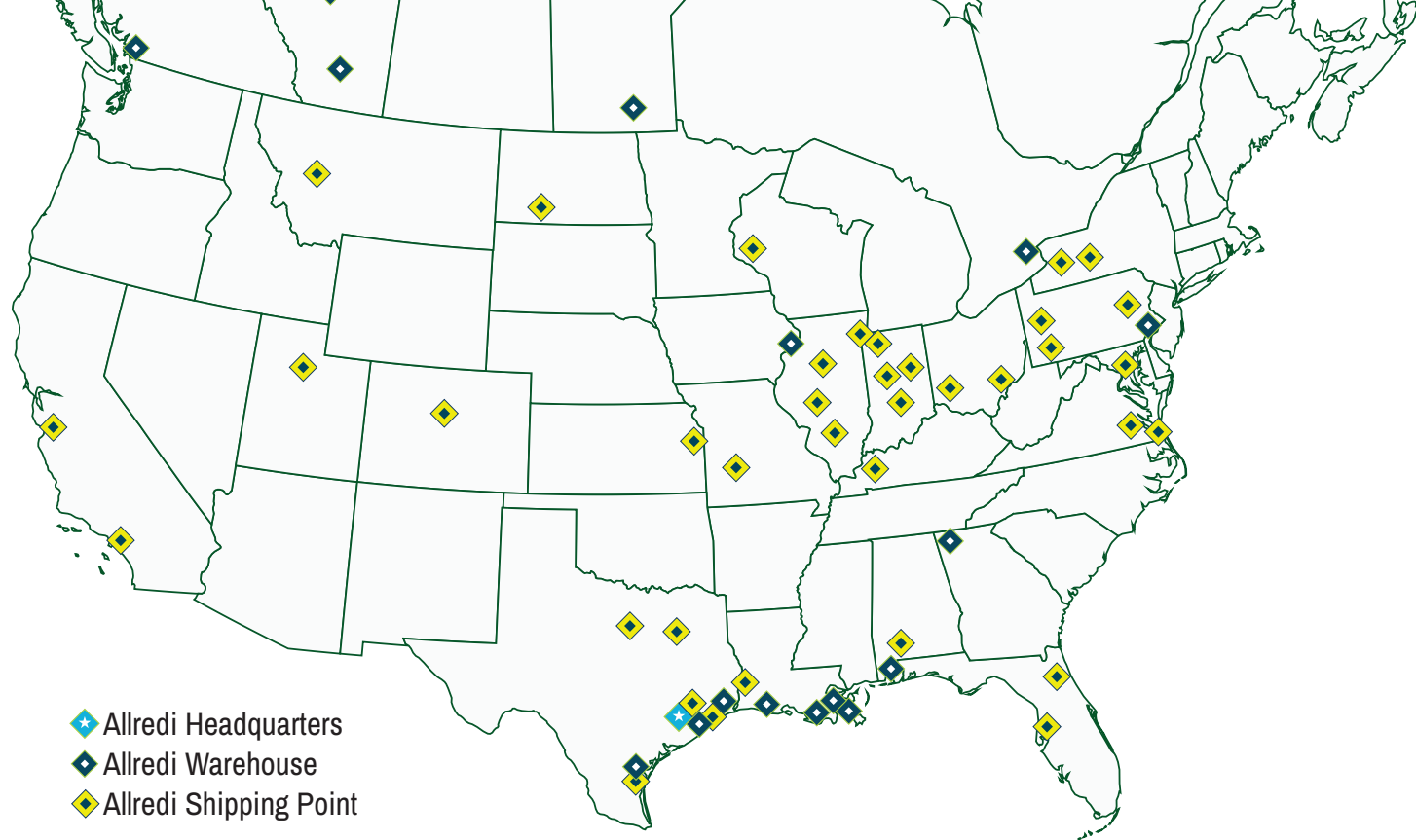
Item #	Part #	Description
Fig. 6		
—	10101314	Marco® 1-1/4" Junior Extractor Moisture Separator
1	1011501	1-1/2" x 1-1/4" Bushing
2	1011201	1-1/4" NPT Close Nipple (<i>Two Required</i>)
3	1012101	1/4" NPT Brass Petcock
4	10ME3	4-lug Air Hose Fitting - 1-1/4" NPT (F)
5	1011602	1-1/4" NPT Full Port Ball Valve
6	1006204	1-1/4" NPT 90° Elbow
—	106M349	Part Numbers and Schematics Guide – Marco® Extractor Moisture Separators

OPTIONAL ACCESSORIES

Part Numbers	LUBRICATION
1070517	Pneumatic Air Tool Oil - 32 oz. bottle

MAINTENANCE NOTES

[illegible]



ALLREDI THERE

Serving these industries: Bridge, Pipeline, Tank & Tower, Concrete Services, Rail, Shipyard & Marine, Pools & Fountains, and Foundry

UNITED STATES

Pasadena, TX (*Headquarters*)
844.361.7038

Beaumont, TX
409.722.1284

Bristol, PA
215.826.8080

Corpus Christi, TX
361.887.2038

Davenport, IA
563.324.2519

Deer Park, TX
(*Service & Rental Location*)
281.930.0905

Duluth, GA
800.535.4564

Gonzales, LA
225.647.7575

Harvey, LA
504.367.8090

Houma, LA
985.580.4273

Lafayette, LA
337.267.1440

Theodore, AL
251.338.7525

CANADA

Calgary, Alberta
403.279.1924

Coquitlam, BC
604.464.6979

Edmonton, Alberta
780.468.2588 (Manus)
780.425.5510 (Mod-U-Blast)

Hamilton, Ontario
905.527.6000 / 888.794.5665

Mississauga, Ontario
905.890.5837

Winnipeg, Manitoba
204.256.3324

800.BLAST.IT / WWW.ALLREDI-US.COM

Allredi™ and Marco® are registered trademarks of Allredi, LLC.
All other brand names or marks are used for identification purposes and are trademarks of their respective owners.

ALLREDI™

Literature #106M097_1/19/2024