



# MARCO® 1600 CFM AFTERCOOLER WITH COALESCING TANK



## PART NUMBERS AND SCHEMATICS GUIDE

## Company Profile

Allredi was formed in the early 2020, when two of the largest distributors in the blasting, coating, safety, and environmental industry, APE Companies and Marco Group International, joined forces. While the qualities both companies are known for have not changed, a lot about our business is new. New abilities. New agilities. New ways to help you win. This calls for a new name, Allredi.

This name exemplifies what we have become. It is completely oriented to the needs of our customers. To your needs. It says that when you call us for anything – products, service, expert advice, anything – you can consider it done. Or even better, Allredi done.

We are your right-now supplier. From skills to SKUs, we deliver the goods fast. So you can be more agile every minute, every day. This is who we are. This is what our new name means. Go ahead and expect excellence, because we're bringing it.

## Our Mission and Vision

To be the industry's preferred partner in surface preparation solutions through unrivaled technical expertise, customer experience, product availability, and tailored service offerings.

## The Allredi Difference

- **Industry Experience** – With Allredi on your team, you have access to expertise which can only come from decades of industry leadership. We have organized our engineering department, production specialists, customer operations, and safety support into a "Center of Competence." As an Allredi customer, you have access to hundreds of years of cumulative experience related to your operations.
- **Manufacturing Excellence** – Allredi is a U.S. based manufacturer of equipment for the Surface Preparation and Protective Coatings industries. Allredi's engineers benchmark the industry to ensure that we design and manufacture superior products that set the "Gold Standard" for performance, safety, and quality.
- **Legendary Customer Service** – Allredi's legendary customer service team is staffed by friendly, highly-trained individuals who are focused on providing the highest level of product support, order accuracy, and customer satisfaction.
- **Product Availability** – We stock over 10,000 SKU's and have over 45 shipping locations to serve North American and International markets for all major brands of blasting, coating, environmental, and safety equipment. Allredi is your right-now supplier, so you can keep your projects moving. From our foundation of strong relationships, we have built a nationwide network that puts vast inventory and ready service close to our customers. We provide advanced expertise, and we deliver the goods fast – so you can easily access the products and services you need to me more agile every minute, every day.
- **Technology Leadership** – Our website provides: Operator's Manuals, Part Numbers and Schematics Guides, SDS information, and key product features and specifications, providing access to information 24/7.

# TABLE OF CONTENTS

<b>Company Profile</b> .....	<b>2</b>
<b>Table of Contents</b> .....	<b>3</b>
<b>Part Numbers</b> .....	<b>4</b>
<b>Specifications</b> .....	<b>5</b>
<b>Part Numbers &amp; Schematics</b> .....	<b>6-14</b>
Marco® 1600 CFM Aftercooler With Coalescing Tank—Pneumatic .....	<b>6-7</b>
Marco® 1600 CFM Aftercooler With Coalescing Tank—230 Volt Electric. ....	8-9
Aftercooler Assembly—Pneumatic .....	10
Aftercooler Assembly—Electric .....	11
Transfer Hose Assembly. ....	12
Inlet Filter Assembly .....	13
Air Filter/Regulator/Lubricator. ....	14
<b>Optional Accessories</b> .....	<b>15-16</b>
Airflow Shutoff Kits – Lug Fittings. ....	15
Airflow Shutoff Kits – Hammerlock Fittings. ....	15
Pressure Relief Valves .....	16
Pipe Plugs .....	16
Lubrication .....	16
<b>Maintenance Notes</b> .....	<b>17-19</b>

## PART NUMBERS

MARCO® 1600 CFM AFTERCOOLER WITH COALESCING TANK									
Part Numbers	Inlet			Outlet			Power Source	Filter, Regulator, and Lubricator	Electric Starter Box
	Inlet Quantity	Inlet Size	Fittings	Outlet Quantity	Outlet Size	Fittings			
10101153	1	3"	Not Included	9	(2) 3", (2) 2", (1) 1-1/4", (4) 1"	Not Included	Pneumatic	Included	Not Included
10101154	1	3"	Not Included	9	(2) 3", (2) 2", (1) 1-1/4", (4) 1"	Not Included	230-Volt AC	Not Included	Included



10101153



10101154

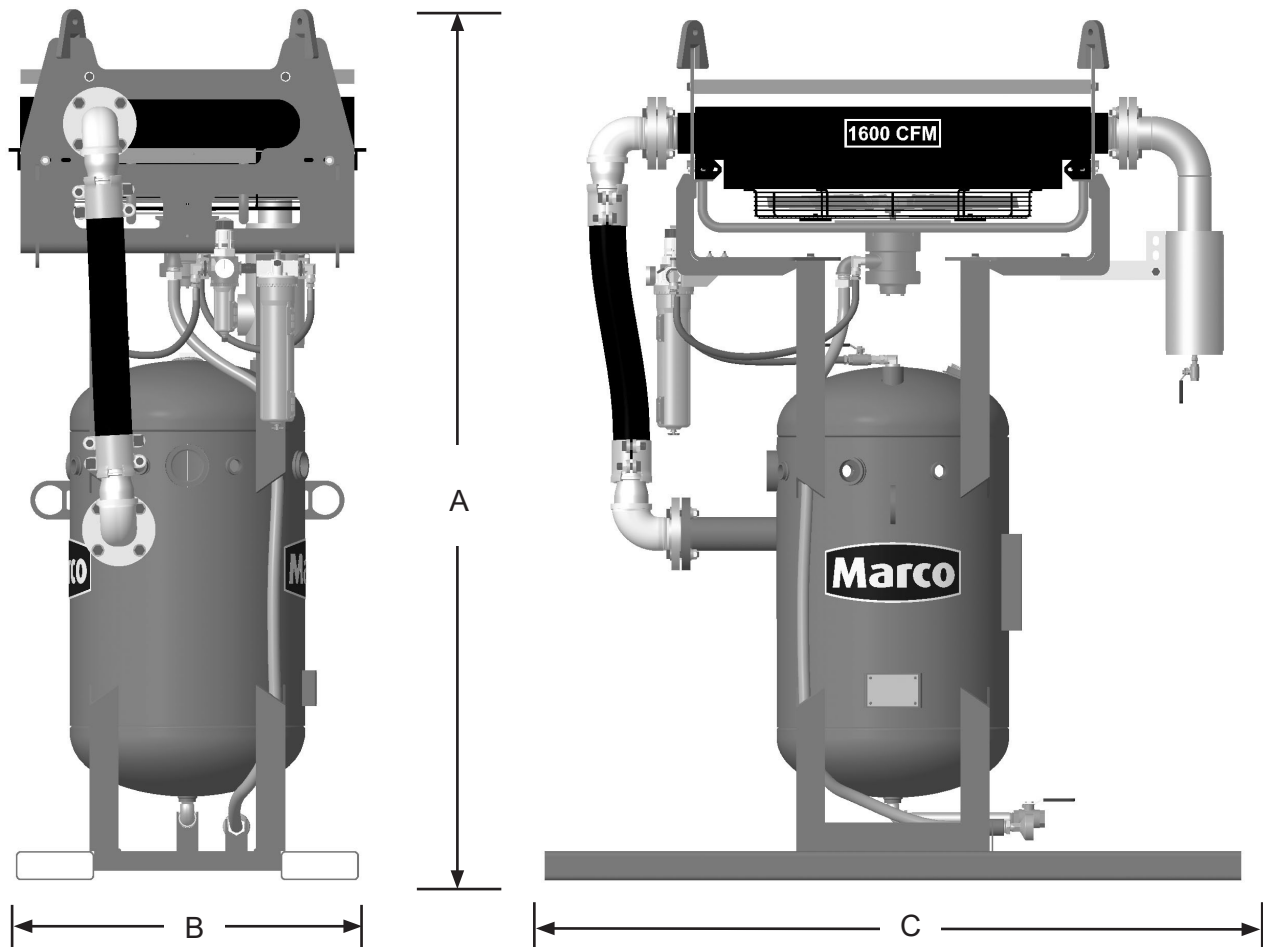
## SPECIFICATIONS

**Lubrication:** SAE 10 oil or Air Tool Anti-freeze Lubricant

**Empty Weight:** 1300 Pounds

**Pneumatic Overall Dimensions:** A: 89"  
B: 35"  
C: 72"

**Electric Overall Dimensions:** A: 91"  
B: 35"  
C: 72"



**Pneumatic model shown.**

# ASSEMBLY PART NUMBERS & SCHEMATICS

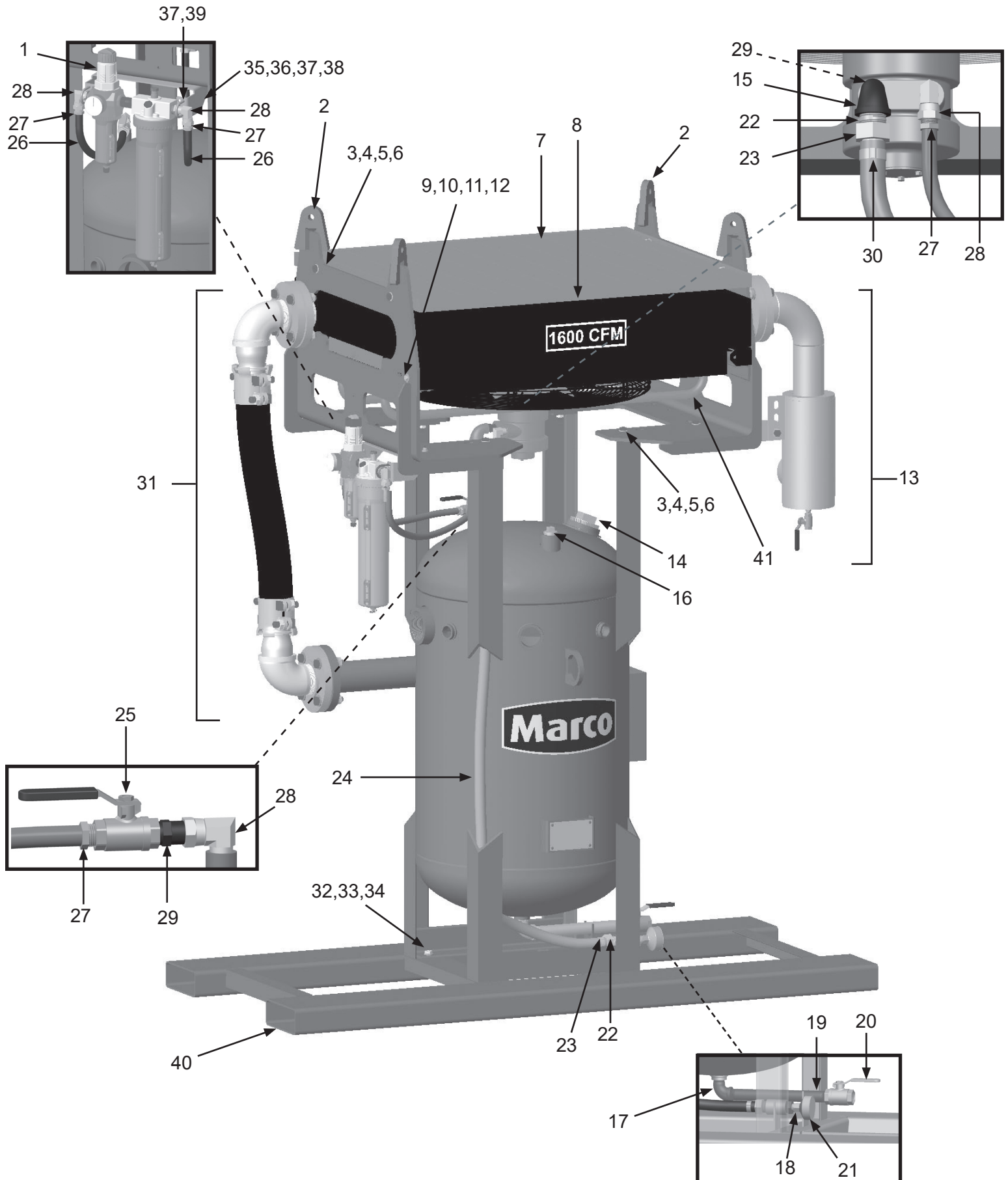
## Marco® 1600 CFM Aftercooler With Coalescing Tank—Pneumatic

Item #	Part #	Description
<b>Fig. 1</b>		
—	<b>10101153</b>	<b>Marco® 1600 CFM Aftercooler With Coalescing Tank – Pneumatic</b>
1	10105890	Filter/Regulator/Lubricator with Pressure Gauge (See Fig. 7)
2	10101033	Heat Exchanger Mounting Bracket (Two Required)
3	10101943	1/2-13 x 1-3/4" Hex Bolt Galvanized (Eight Required)
4	10100674	1/2" Flat Washer Galvanized (16 Required)
5	10100675	1/2" Lock Washer Galvanized (Eight Required)
6	10101941	1/2" Hex Nut Galvanized (Eight Required)
7	10101166	Heat Exchanger Protective Grate
8	—	Aftercooler Assembly - Complete (See Fig. 3)
9	10101059	3/8-16 x 1-1/4" Hex Bolt Galvanized (Four Required)
10	10101942	3/8" Flat Washer Galvanized (Eight Required)
11	10L805015	3/8" Lock Washer Galvanized (Four Required)
12	10101938	3/8" Hex Nut Galvanized (Four Required)
13	—	Inlet Filter Assembly (See Fig. 6)
14	10101034	3" NPT Galvanized Pipe Plug
15	10101002	1/2" x 1" NPT Reducing Elbow
16	1011902	1-1/4" NPT Plug
17	1011801	1" NPT Street Elbow
18	1011812	1" (M) x 1/2" (F) NPT Bushing
19	10101064	1" x 12" NPT Pipe Nipple
20	1011601	1" NPT Full Port Ball Valve
21	10101800	Aftercooler Exhaust Muffler – 950 CFM–1600 CFM
22	1012151	1" NPT Close Nipple (Two Required)
23	10SFE2	1" NPT Swivel Hose End (F) (Two Required)
24	10AH100	1" I.D. Air Hose (Per Foot)
25	10L363	1/2" NPT Full Port Ball Valve

Item #	Part #	Description
26	10AH012	1/2" I.D. Air Hose (Per Foot)
27	10PAF050	1/2" Push-on Hose Fitting (Four Required)
28	10SAP1290	1/2" 90° Swivel (Two Required)
29	20100677	1/2" Nipple (Two Required)
30	10AHCL1	Band Clamp (Two Required)
31	—	Transfer Hose Assembly (See Fig. 5)
32	10107495	1/2-13 x 1-5/8" Grade 8 Hex Bolt Zinc (Four Required)
33	10107496	1/2-13 Grade 8 Lock Nut Zinc (Four Required)
34	10104711	1/2" Grade 8 Flat Washer Zinc (Eight Required)
35	10108281	Mounting Bracket
36	10105903	1/4-20 x 1-1/4" Hex Bolt (Four Required)
37	10101940	1/4" Flat Washer (12 Required)
38	10101939	1/4-20 Stainless Steel Lock Nut (Four Required)
39	10109052	U-Bolt (Two Required)
40	10101024	Skid Weldment
41	10110117	Aftercooler Motor Mounting Bracket
—	1070517	Pneumatic Tool Oil — 32 oz.
—	1091017	Hazard Identification Tag
—	106M094	Part Numbers and Schematics Guide – Marco® 1600 CFM Aftercooler With Coalescing Tank
—	1090094	Operator's Manual – Marco® 1600 CFM Aftercooler With Coalescing Tank

## PART NUMBERS AND SCHEMATICS

Figure 1: Marco® 1600 CFM Aftercooler With Coalescing Tank—Pneumatic



## PART NUMBERS AND SCHEMATICS

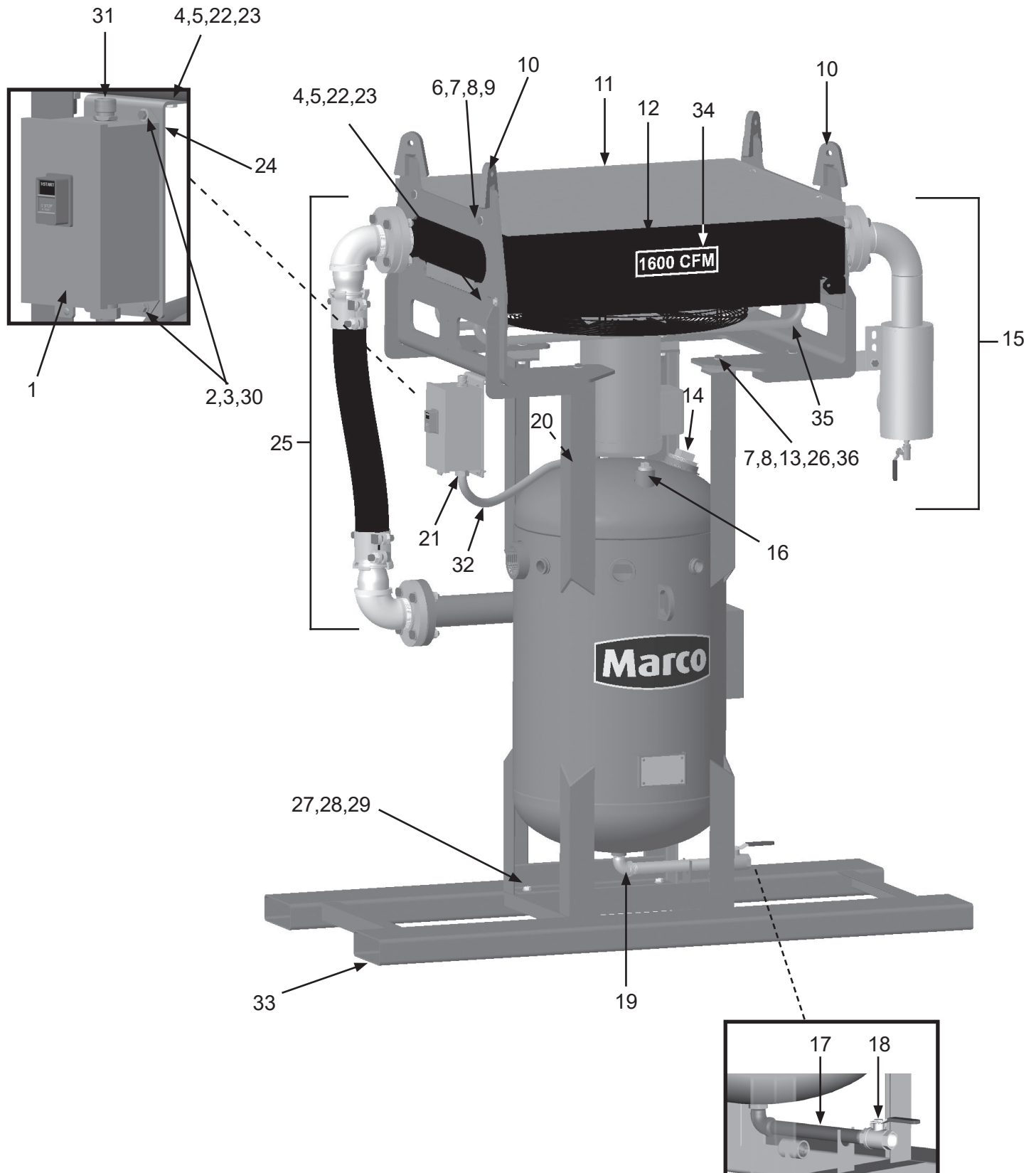
### Marco® 1600 CFM Aftercooler With Coalescing Tank—Electric

Item #	Part #	Description
<b>Fig. 2</b>		
—	<b>10101154</b>	<b>Marco® 1600 CFM Aftercooler With Coalescing Tank – Electric</b>
1	10108792	Electric Motor Starter Box – Single Phase
2	1012154	1/4-20 x 1" Hex Bolt Zinc <i>(Four Required)</i>
3	1014017	1/4" Flat Washer Zinc <i>(Eight Required)</i>
4	10101059	3/8-16 x 1-1/4" Galvanized Bolt <i>(Six Required)</i>
5	10101942	3/8" x 3/4" Washer Galvanized <i>(12 Required)</i>
6	10101943	1/2-13 x 1-3/4" Hex Bolt Galvanized <i>(Four Required)</i>
7	10100674	1/2" Flat Washer Galvanized <i>(16 Required)</i>
8	10100675	1/2" Split Lock Washer Galvanized <i>(Eight Required)</i>
9	10101941	1/2" Hex Nut Galvanized <i>(Four Required)</i>
10	10101033	Mounting Bracket <i>(Two Required)</i>
11	10101166	Heat Exchanger Protective Grate
12	—	1600 CFM Aftercooler Assembly - Complete <i>(See Fig. 4)</i>
13	10101926	3" Square x 2" Thick Spacer <i>(Four Required)</i>
14	10101034	3" NPT Galvanized Pipe Plug
15	—	Inlet Hose Assembly <i>(See Fig. 6)</i>
16	1011902	1-1/4" NPT Galvanized Pipe Plug
17	10101064	1" x 12" NPT Pipe Nipple
18	1011601	1" NPT Full Port Valve
19	10101801	1" Street Elbow
20	1011101	1/2" NPT Pipe Plug
21	10103303	3/4" Conduit Hub <i>(Two Required)</i>
22	10L805015	3/8" Lock Washer Galvanized <i>(Six Required)</i>
23	10101938	3/8-16 Hex Nut Galvanized <i>(Six Required)</i>
24	10108830	Motor Starter Bracket
25	—	Transfer Hose Assembly <i>(See Fig. 5)</i>
26	10110760	1/2-13 x 4" Hex Bolt Galvanized <i>(Four Required)</i>
27	10107495	1/2-13 x 1-5/8" Grade 8 Hex Bolt Zinc <i>(Four Required)</i>
28	10107496	1/2-13 Grade 8 Lock Nut Zinc <i>(Four Required)</i>
29	10104711	1/2" Grade 8 Flat Washer Zinc <i>(Eight Required)</i>
30	1012323	1/4"-20 Lock Nut Zinc <i>(Four Required)</i>
31	20101197	3/4" NPT Cord Grip
32	10103304	3/4" Flexible Conduit
33	10101024	Skid Weldment
34	1094538	1600 CFM Product Sticker
35	10110117	Aftercooler Motor Mounting Bracket
36	1014022	1/2-33 Zinc Hex Nut <i>(Four Required)</i>
—	10108799	Thermal Unit - Full Load Current 23.2 - 27.1 Amps
—	1091017	Hazard Identification Tag
—	106M094	Part Numbers and Schematics Guide – Marco® 1600 CFM Aftercooler With Coalescing Tank
—	1090094	Operator's Manual – Marco® 1600 CFM Aftercooler With Coalescing Tank



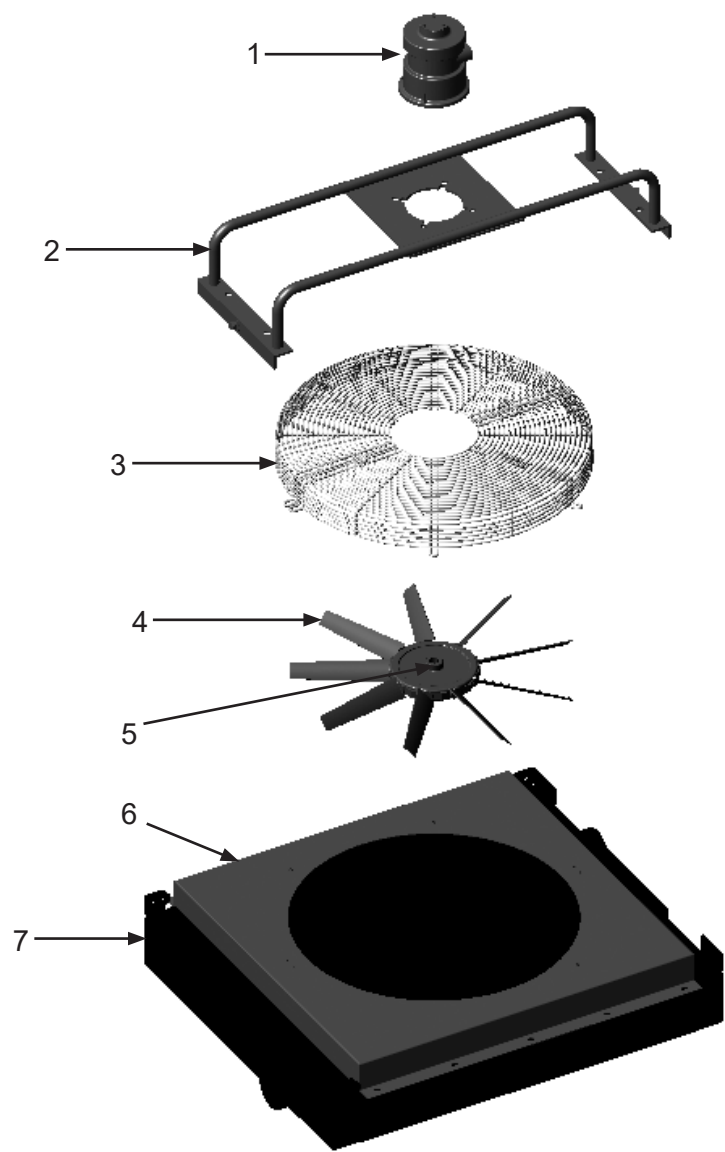
## PART NUMBERS AND SCHEMATICS

Figure 2: Marco® 1600 CFM Aftercooler With Coalescing Tank—Electric



# PART NUMBERS AND SCHEMATICS

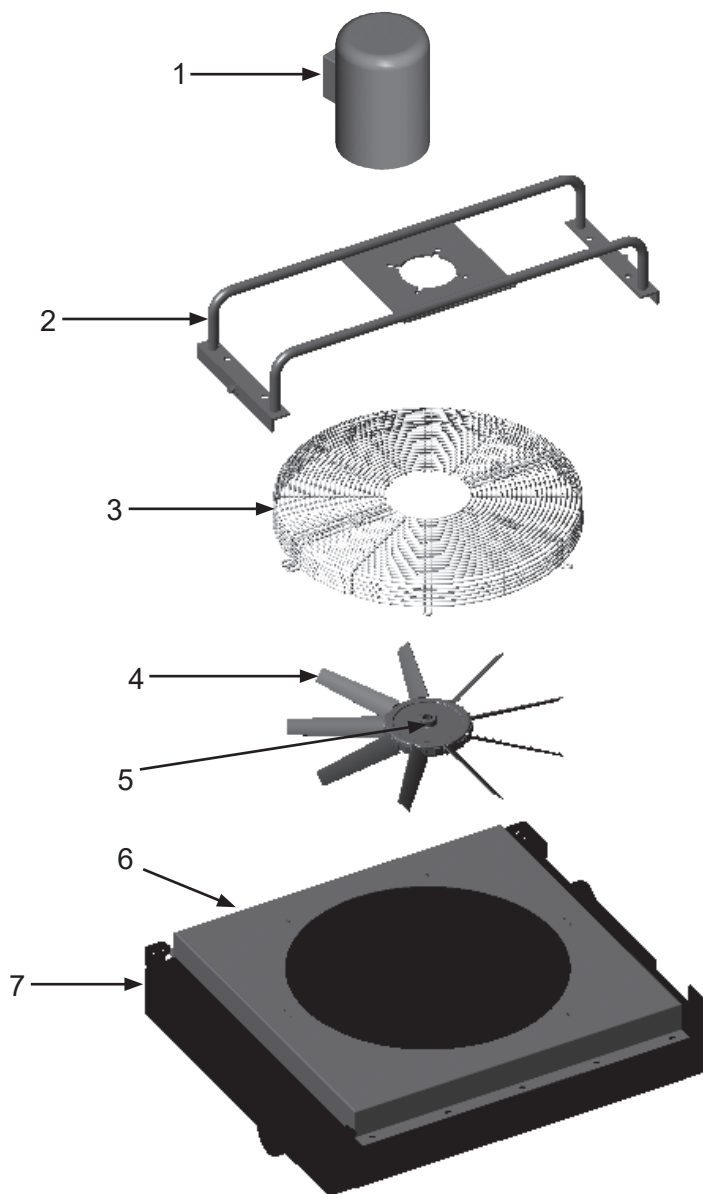
Figure 3: Aftercooler Assembly—Pneumatic



Item #	Part #	Description
<b>Fig. 3</b>		
—	<b>10TTAHP16005</b>	<b>1600 CFM Aftercooler—Pneumatic—Complete</b>
1	10101804	Air Motor
2	10110117	Aftercooler Motor Mounting Bracket
3	10101808	Fan Guard
4	10101806	Fan Blades
5	10101807	Fan Bushing
6	10104172	Fan Shroud
7	10TTAHP1600C	Aftercooler Core
—	10101800	Muffler for Air Motor
—	10101805	Air Motor Service Kit (Includes: shaft seal, drive end bearing, dead end bearing, four vanes, four push pins, four vane springs, shim, end cap gasket, muffler cartridge, and muffler felt)

## PART NUMBERS AND SCHEMATICS

Figure 4: Aftercooler Assembly—Electric



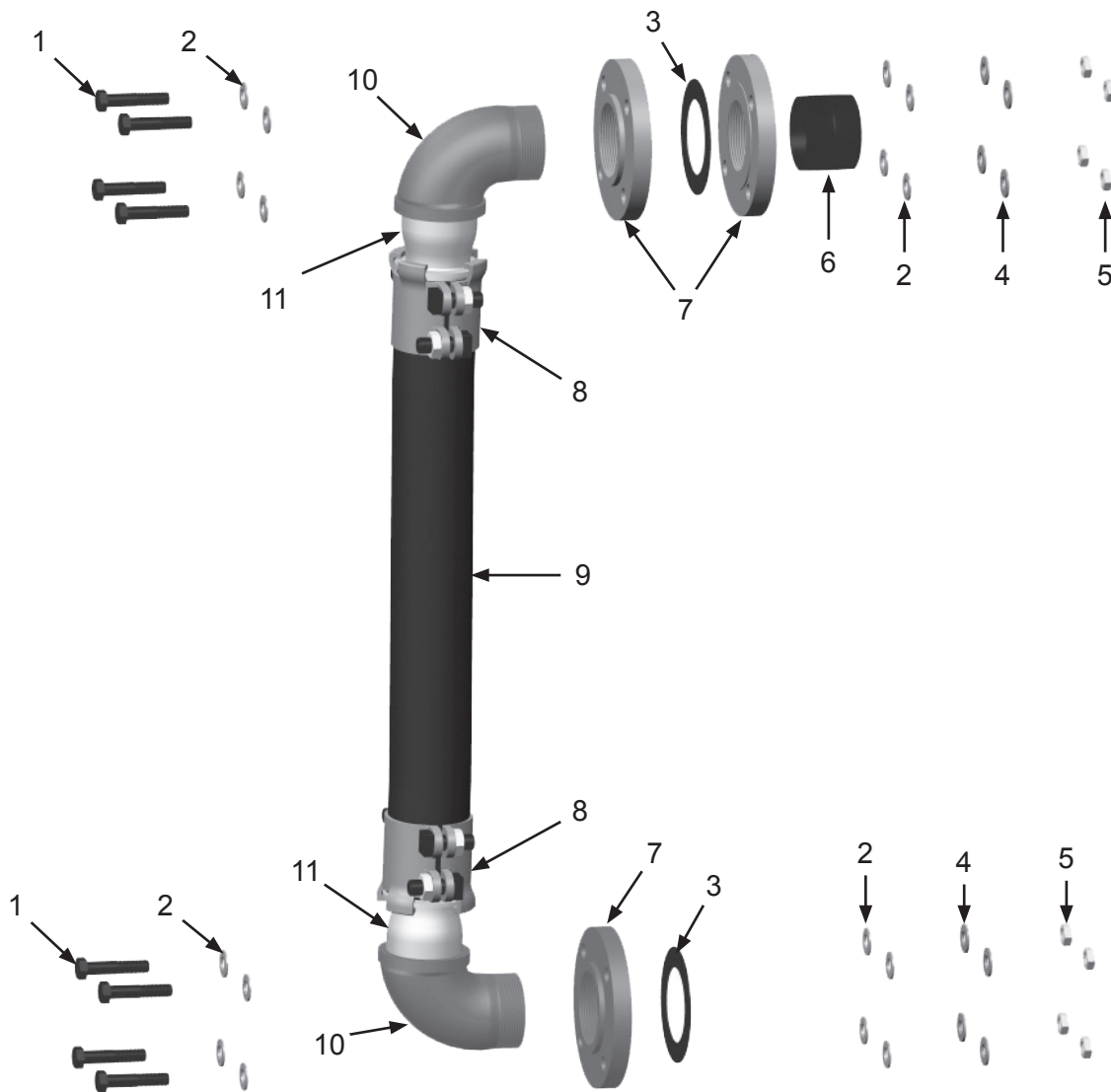
Item #	Part #	Description
--------	--------	-------------

Fig. 4

—	10TTAHP16002	1600 CFM Aftercooler—Electric—Complete
1	10101809	Electric Motor – 230-Volt AC – Single Phase
2	10110117	Aftercooler Motor Mounting Bracket
3	10101808	Fan Guard
4	10101806	Fan Blades
5	10101810	Fan Bushing
6	10104172	Fan Shroud
7	10101803	Aftercooler Core

## PART NUMBERS AND SCHEMATICS

**Figure 5: Transfer Hose Assembly**



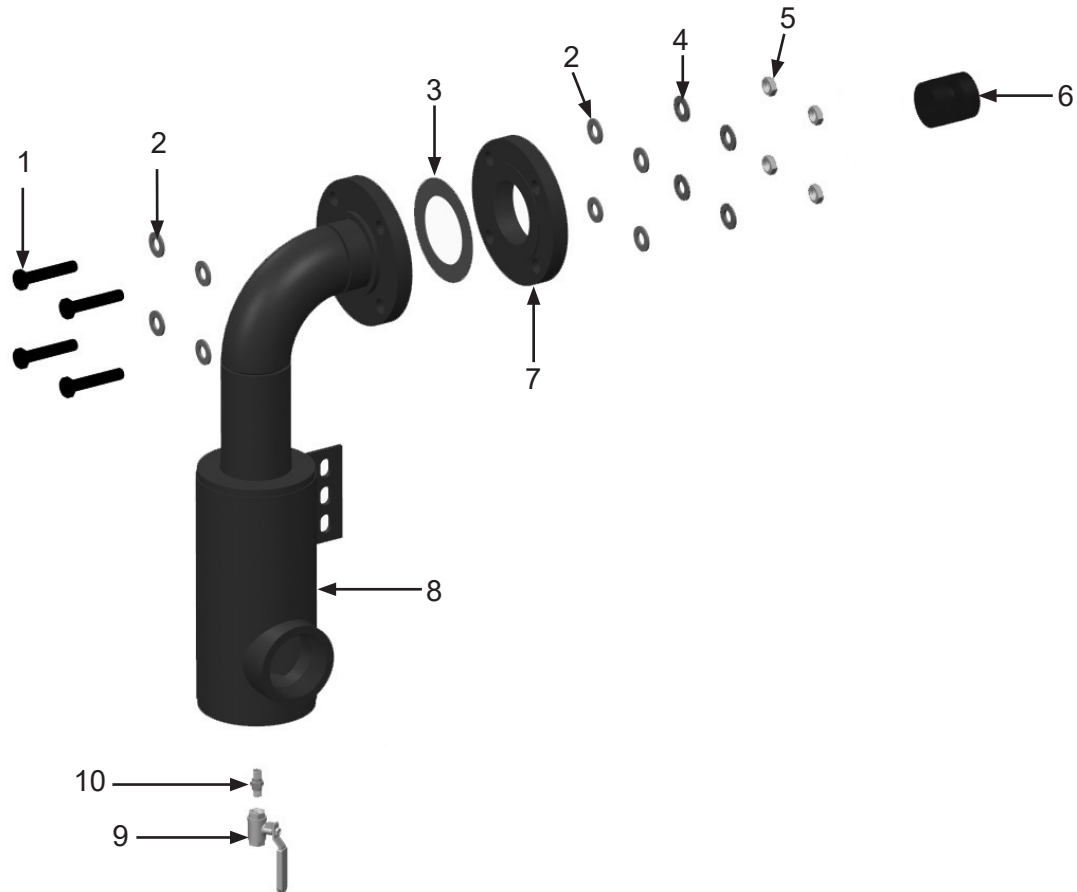
Item #	Part #	Description
--------	--------	-------------

**Fig. 5**

1	10101058	5/8-11 x 3" Grade 8 Bolt ( <i>Eight Required</i> )
2	10101060	5/8" Flat Washer ( <i>16 Required</i> )
3	10101047	Flange Gasket ( <i>Two Required</i> )
4	10103399	5/8" Grade 8 Split Lock Washer ( <i>Eight Required</i> )
5	10103393	5/8-11 Grade 8 Hex Nut ( <i>Eight Required</i> )
6	10101040	3" NPT Close Nipple
7	10101041	3" NPT Threaded Flange ( <i>Three Required</i> )
8	10BU35	3" Boss Clamp ( <i>Two Required</i> )
9	10101045	3" x 2-1/2' Steel Reinforced Air Hose ( <i>Per Foot</i> )
10	10101148	3" NPT Street Elbow ( <i>Two Required</i> )
11	10101754	3" NPT Hose Stem ( <i>Two Required</i> )

## PART NUMBERS AND SCHEMATICS

**Figure 6: Inlet Filter Assembly**



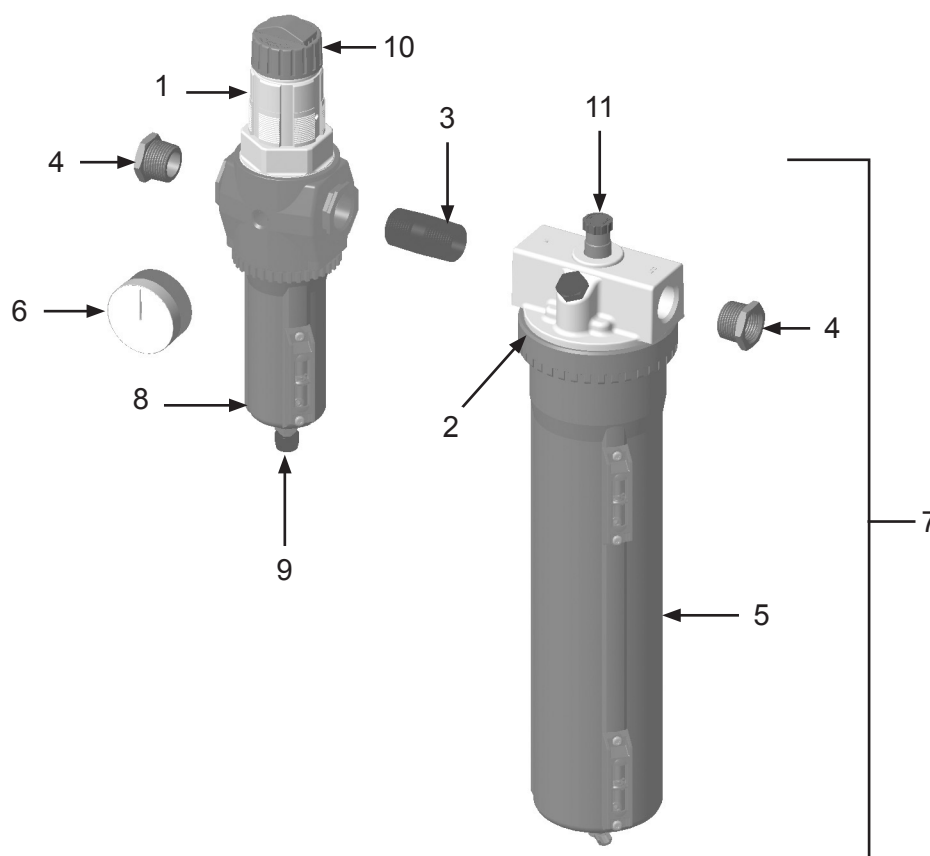
Item #	Part #	Description
--------	--------	-------------

**Fig. 6**

1	10101058	5/8-11 x 3" Grade 8 Bolt <i>(Four Required)</i>
2	10101060	5/8" Flat Washer <i>(Eight Required)</i>
3	10101047	Flange Gasket
4	10103399	5/8" Grade 8 Split Lock Washer <i>(Four Required)</i>
5	10103393	5/8-11 Grade 8 Hex Nut <i>(Four Required)</i>
6	10101040	3" NPT Close Nipple
7	10101041	3" NPT Threaded Flange
8	10101049	Inlet Filter
9	1080050	1/4" NPT Full Port Ball Valve
10	1017019	1/4" NPT Hex Nipple





## PART NUMBERS AND SCHEMATICS






Figure 7: Air Filter/Regulator/Lubricator






Item #	Part #	Description
<b>Fig. 7</b>		
	<b>10105890</b>	<b>Air Filter/Regulator/Lubricator with Pressure Gauge—Pneumatic—Complete</b>
1	10SC10105891	Filter/Regulator - Complete
2	10106432	Large O-ring - Lubricator
3	10105894	3/4" x 2" Pipe Nipple
4	10105895	3/4" x 1/2" Reducing Bushing <i>(Two Required)</i>
5	10SC10106507	Extended Metal Bowl Kit for Lubricator <i>(Includes: 2 Sight Glasses and O-Ring)</i>
6	1028606	Pressure Gauge – 0-160 PSI 1/4" – Back Mount
7	10110133	Lubricator <i>(Includes #s: 2 and 5)</i>
8	10SWCABF115100	Metal Bowl Kit for Filter/Regulator <i>(Includes: Bowl, Sight Glass, Manual Drain, Nut, Knob, Clip, Retaining Ring and O-Rings)</i>
9	10SWCA80232	Manual Drain Kit for Filter/Regulator <i>(Includes: Drain, Nut, Knob, Clip and O-Ring)</i>
10	10SKA3762	Adjustment Knob for Filter/Regulator <i>(Includes: Adjusting Knob, Adjusting Key, Screw and Drive Nut)</i>
11	10106506	Cartridge Kit for Lubricator <i>(Includes: Adjusting Knob and Sight Dome)</i>
—	10106504	Diaphragm Kit for Filter/Regulator <i>(Includes: Diaphragm, Rest, Washer and O-Ring)</i>
—	1070517	Pneumatic Tool Oil - 32 oz.






## OPTIONAL ACCESSORIES

		AIRFLOW SHUTOFF KITS – LUG FITTINGS			
	Part Numbers	Pipe String I.D.	Close Nipple	Full Port Ball Valve	Coupling
	10103731	1"	1012151	1011601	10ME2
	10103732	1-1/4"	1011201 (Quantity of Two)	1011602	10ME3
	10103733	1-1/2"	1014015 (Quantity of Two)	1011603	10ME4
	10103734	2"	1001806 (Quantity of Two)	1011604	10ME5

		AIRFLOW SHUTOFF KITS – HAMMERLOCK FITTINGS			
	Part Numbers	Pipe String I.D.	Close Nipple	Full Port Ball Valve	Coupling Spud
	10103830	1"	10102151 (Quantity of Two)	1011601	10DXGB13
	10103831	1-1/4"	1011201 (Quantity of Two)	1011602	10DXGB18
	10103832	1-1/2"	1014015 (Quantity of Two)	1011603	10DXGB23
	10103833	2"	1001806 (Quantity of Two)	1011604	10DXGB28
	10103934	3"	10101040 (Quantity of Two)	1011608	10GB38

## OPTIONAL ACCESSORIES

	Part Numbers	PRESSURE RELIEF VALVES	
		PSI	Inlet Size
	10E1POPOFF150	150	1"
	10EPOPOFF125	125	1-1/4"
	10EPOPOFF150	150	1-1/4"

	Part Numbers	GALVANIZED SQUARE HEAD PIPE PLUGS	
		Size	
	1011901	1"	
	1011902	1-1/4"	
	1011101	1-1/2"	
	1011823	2"	
	10101034	3"	

Part Numbers	LUBRICATION
1070517	Pneumatic Air Tool Oil - 32 oz. bottle



## MAINTENANCE NOTES

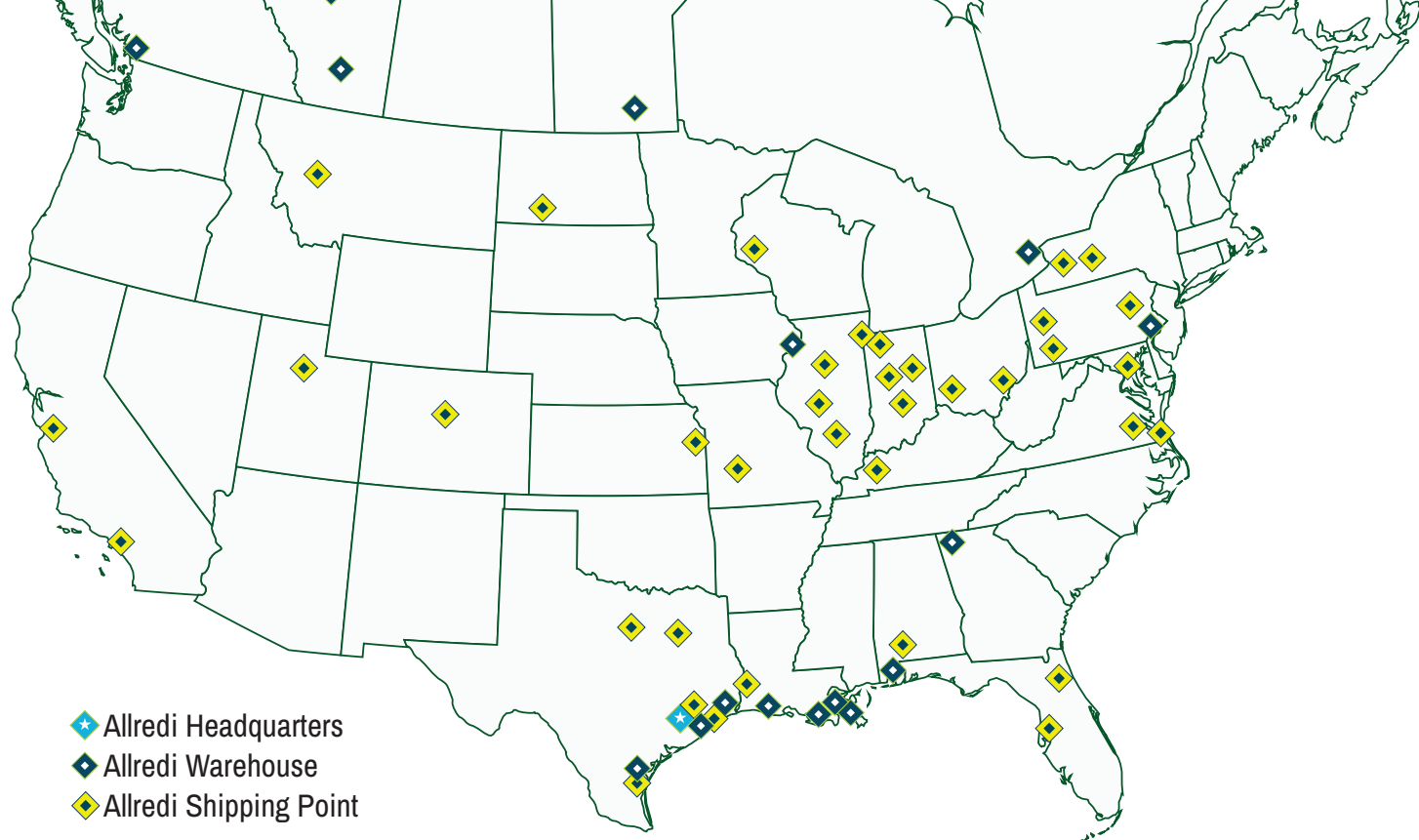
[illegible]

## MAINTENANCE NOTES

[illegible]

## MAINTENANCE NOTES

[illegible]



# ALLREDI THERE

Serving these industries: Bridge, Pipeline, Tank & Tower, Concrete Services, Rail, Shipyard & Marine, Pools & Fountains, and Foundry

## UNITED STATES

**Pasadena, TX (Headquarters)**  
844.361.7038

**Beaumont, TX**  
409.722.1284

**Bristol, PA**  
215.826.8080

**Corpus Christi, TX**  
361.887.2038

**Davenport, IA**  
563.324.2519

**Deer Park, TX**  
(Service & Rental Location)  
281.930.0905

**Duluth, GA**  
800.535.4564

**Gonzales, LA**  
225.647.7575

**Harvey, LA**  
504.367.8090

**Houma, LA**  
985.580.4273

**Lafayette, LA**  
337.267.1440

**Theodore, AL**  
251.338.7525

## CANADA

**Calgary, Alberta**  
403.279.1924

**Coquitlam, BC**  
604.464.6979

**Edmonton, Alberta**  
780.468.2588 (Manus)  
780.425.5510 (Mod-U-Blast)

**Hamilton, Ontario**  
905.527.6000 / 888.794.5665

**Mississauga, Ontario**  
905.890.5837

**Winnipeg, Manitoba**  
204.256.3324

**WWW.ALLREDI-US.COM / 800.252.7848**

**WWW.ALLREDI-CA.COM / 800.661.3842**

Allredi™ and Marco® are registered trademarks of Allredi, LLC.  
Mod-U-Blast® is a registered trademark of Allredi Blast & Abrasives Canada, Inc.  
All other brand names or marks are used for identification purposes and are trademarks of their respective owners.



Literature #106M094\_7/1/2025