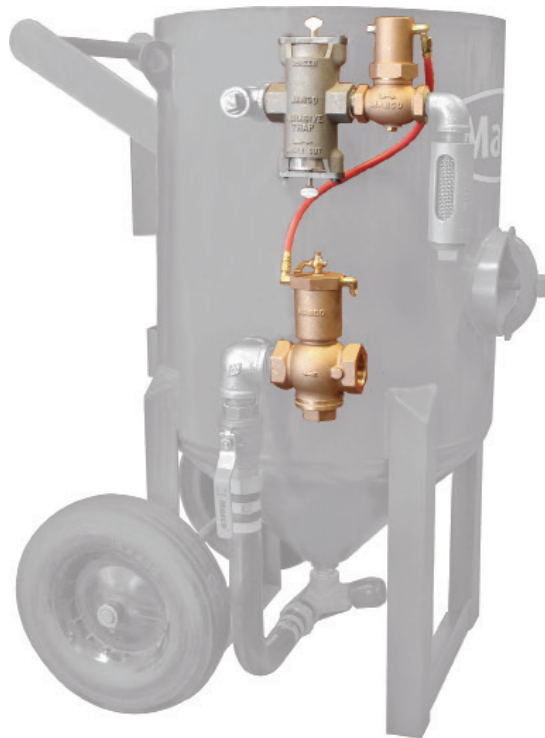




MARCO® 125P REMOTE CONTROL SYSTEMS



PART NUMBERS AND SCHEMATICS GUIDE

Company Profile

Allredi was formed in the early 2020, when two of the largest distributors in the blasting, coating, safety, and environmental industry, APE Companies and Marco Group International, joined forces. While the qualities both companies are known for have not changed, a lot about our business is new. New abilities. New agilities. New ways to help you win. This calls for a new name, Allredi.

This name exemplifies what we have become. It is completely oriented to the needs of our customers. To your needs. It says that when you call us for anything – products, service, expert advice, anything – you can consider it done. Or even better, Allredi done.

We are your right-now supplier. From skills to SKUs, we deliver the goods fast. So you can be more agile every minute, every day. This is who we are. This is what our new name means. Go ahead and expect excellence, because we're bringing it.

Our Mission and Vision

To be the industry's preferred partner in surface preparation solutions through unrivaled technical expertise, customer experience, product availability, and tailored service offerings.

The Allredi Difference

- **Industry Experience** – With Allredi on your team, you have access to expertise which can only come from decades of industry leadership. We have organized our engineering department, production specialists, customer operations, and safety support into a "Center of Competence." As an Allredi customer, you have access to hundreds of years of cumulative experience related to your operations.
- **Manufacturing Excellence** – Allredi is a U.S. based manufacturer of equipment for the Surface Preparation and Protective Coatings industries. Allredi's engineers benchmark the industry to ensure that we design and manufacture superior products that set the "Gold Standard" for performance, safety, and quality.
- **Legendary Customer Service** – Allredi's legendary customer service team is staffed by friendly, highly-trained individuals who are focused on providing the highest level of product support, order accuracy, and customer satisfaction.
- **Product Availability** – We stock over 10,000 SKU's and have over 45 shipping locations to serve North American and International markets for all major brands of blasting, coating, environmental, and safety equipment. Allredi is your right-now supplier, so you can keep your projects moving. From our foundation of strong relationships, we have built a nationwide network that puts vast inventory and ready service close to our customers. We provide advanced expertise, and we deliver the goods fast – so you can easily access the products and services you need to me more agile every minute, every day.
- **Technology Leadership** – Our website provides: Operator's Manuals, Part Numbers and Schematics Guides, SDS information, and key product features and specifications, providing access to information 24/7.

TABLE OF CONTENTS

Company Profile	1
Table of Contents	2
Marco® 125P Remote Control System	3-12
Part Numbers	3-4
Part Numbers & Schematics	5-10
Marco® 125P Remote Control System	5-6
1-1/2" Inlet Valve	7
1" Outlet Valve	8
Abrasive Trap	9
Marco® 150P Remote Control Switch	10
Pneumatic Control Line & Accessories . . .	11-12
Maintenance Notes	13-14

PART NUMBER

Part Number	MARCO® 125P REMOTE CONTROL SYSTEM						
	1-1/2" Inlet Valve	1" Outlet Valve	Abrasive Trap	Remote Control Switch	50 Feet of Pneumatic Control Line – Coupled	5 Feet of Pneumatic Control Line – Coupled	18" of Feet of Pneumatic Control Line – Coupled
1012500	1012200	1012050	1012000	1015000	10TL50	10TL5	10CL18

MARCO® 125P REMOTE CONTROL SYSTEM



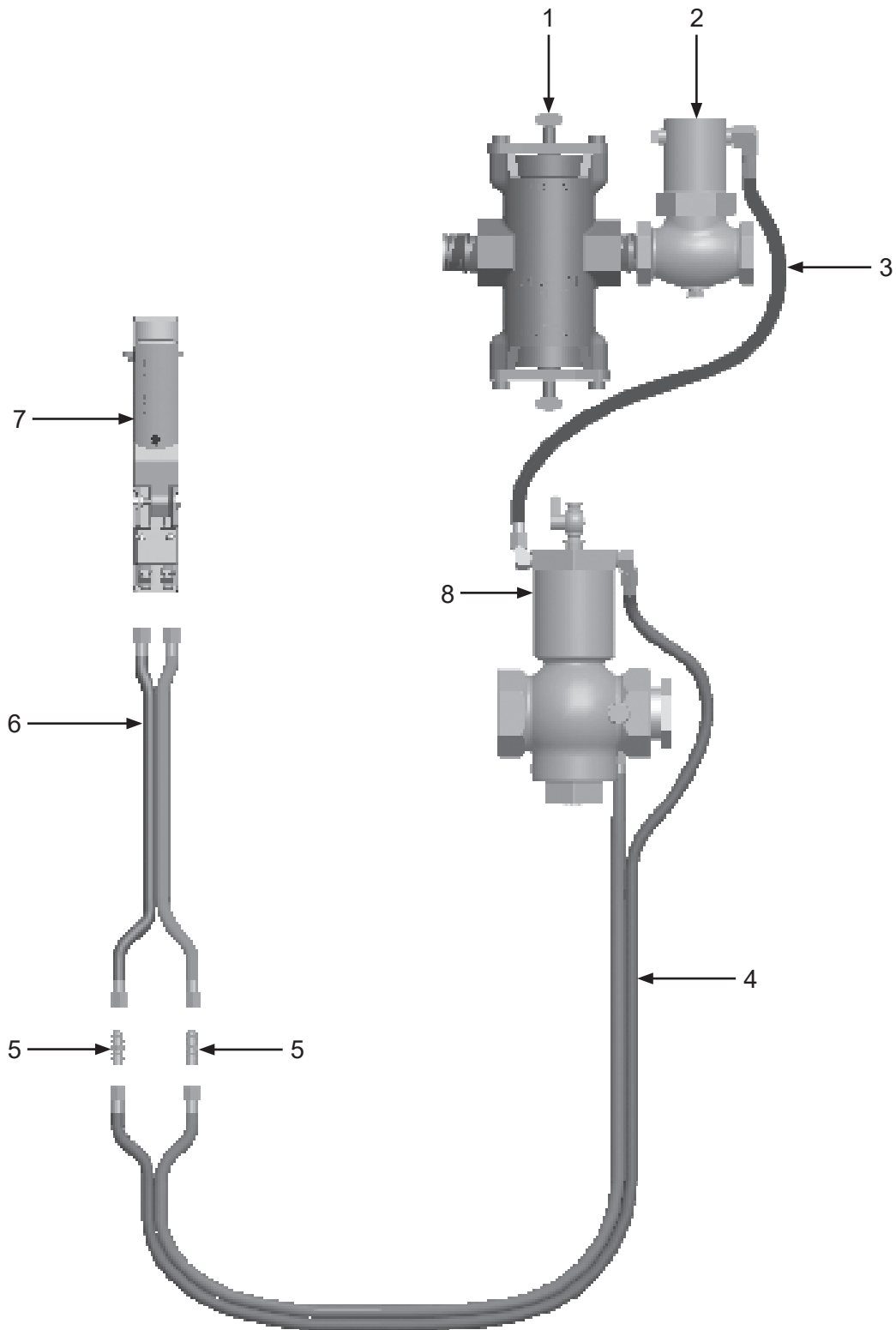
PART NUMBERS & SCHEMATICS

Marco® 125P Remote Control System

Item #	Part #	Description
Fig. 1		
—	1012500	Marco® 125P Remote Control System – Complete
1	1012000	Abrasive Trap – Complete (<i>see Figure 4</i>)
2	1012050	1" Outlet Valve – Complete (<i>see Figure 3</i>)
3	10CL18	Coupled Pneumatic Control Line – 18 Inches
4	10TL5	Coupled Pneumatic Control Line – 5 Feet
5	1017001	3/16" Pneumatic Control Line Union (<i>Two Required</i>)
6	10TL50	Coupled Pneumatic Control Line – 50 Feet
	10TL100	Coupled Pneumatic Control Line – 100 Feet (<i>optional</i>)
7	1015000	Marco® 150P Remote Control Switch – Complete (<i>see Figure 5</i>)
8	1012200	1-1/2" Inlet Valve – Complete (<i>see Figure 2</i>)
—	1011501	1-1/2" NPT (M) x 1-1/4" NPT (F) Bushing (<i>Not Shown</i>)
—	106M014	Part Numbers & Schematics Guide – Marco® 125P Remote Control System
—	106M023	Part Numbers & Schematics Guide – Marco® 150P Remote Control Switch
—	1090014	Operator's Manual – Marco® 125P Remote Control System
—	1090023	Operator's Manual – Marco® 150P Remote Control Switch

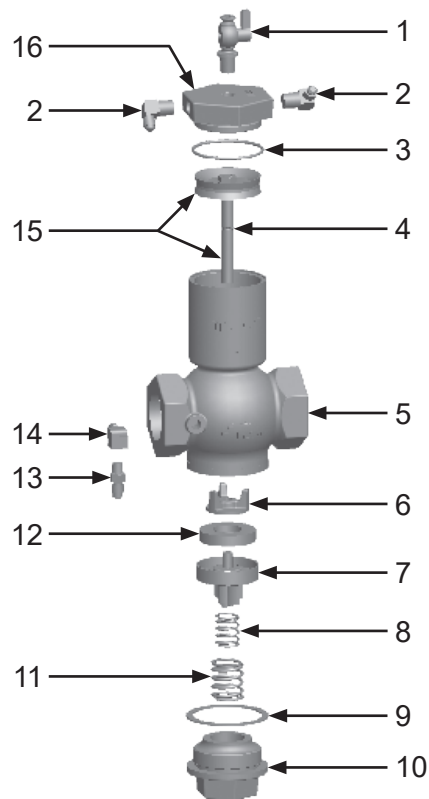
PART NUMBERS & SCHEMATICS

Figure 1: Marco® 125P Remote Control System



PART NUMBERS & SCHEMATICS

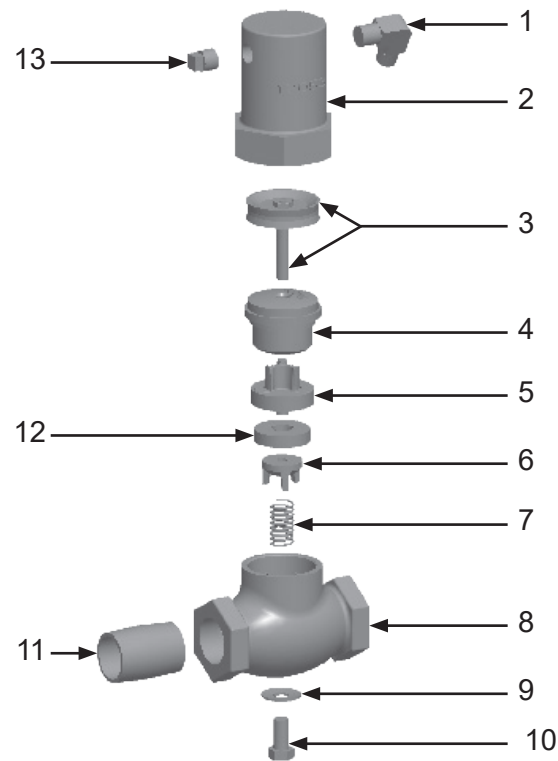
Figure 2: 1-1/2" Inlet Valve



Item #	Part #	Description
Fig. 2		
—	1012200	1-1/2" Inlet Valve – Complete
1	1012101	1/4" NPT Petcock
2	1012051	1/4" NPT Brass Elbow (<i>Two Required</i>)
3	1012213	1/8" x 2-1/2" O-ring
4	1012208	1/16" x 7/16" O-ring
5	1012204	1-1/2" Body
6	1012207	1-1/2" Plug Washer Retainer
7	1012205	1-1/2" Plug
8	1012105	5/8" x 1-11/16" Inner Spring
9	1012202	1-1/2" Bottom Cap Gasket
10	1012201	1-1/2" Bottom Cap
11	1012203	7/8" x 2-1/16" Outer Spring
12	1012206	1-1/2" Plug Washer
13	1012103	1/8" Adapter with 1/16" Restrictor Port
14	1012113	1/8" Street Elbow
15	1012209	Piston and Rod Assembly
16	1012214	1-1/2" Cylinder Cap
—	1012215	1-1/2" Inlet Valve Repair Kit (<i>Includes Item #'s: 3,4,8,9,11, and 12 (Quantity of Two)</i>)

PART NUMBERS & SCHEMATICS

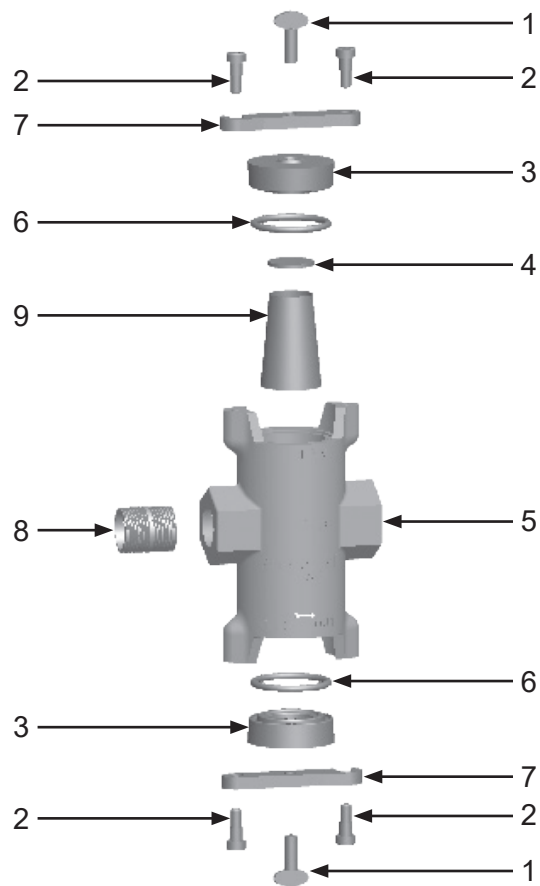
Figure 3: 1" Outlet Valve



Item #	Part #	Description
Fig. 3		
—	1012050	1" Outlet Valve – Complete
1	1012051	1/4" x 1/4" Brass Elbow
2	1012053	Bonnet
3	1012054	Piston and Rod Assembly
4	1012058	Plug and Spindle Guide
5	1012059	Plug
6	1012061	Plug Washer Retainer
7	1012063	7/16" x 1-5/8" Spring
8	1012062	Body
9	1012064	3/8" Nylon Washer
10	1012065	3/8" x 3/4" Bolt
11	1012151	1" NPT Close Nipple
12	1012060	Plug Washer
13	1012052	1/4" NPT Pipe Plug
—	1012066	1" Outlet Valve Repair Kit (Includes Item #'s: 5,6,7,9,10, and 12 (Quantity of Two))

PART NUMBERS & SCHEMATICS

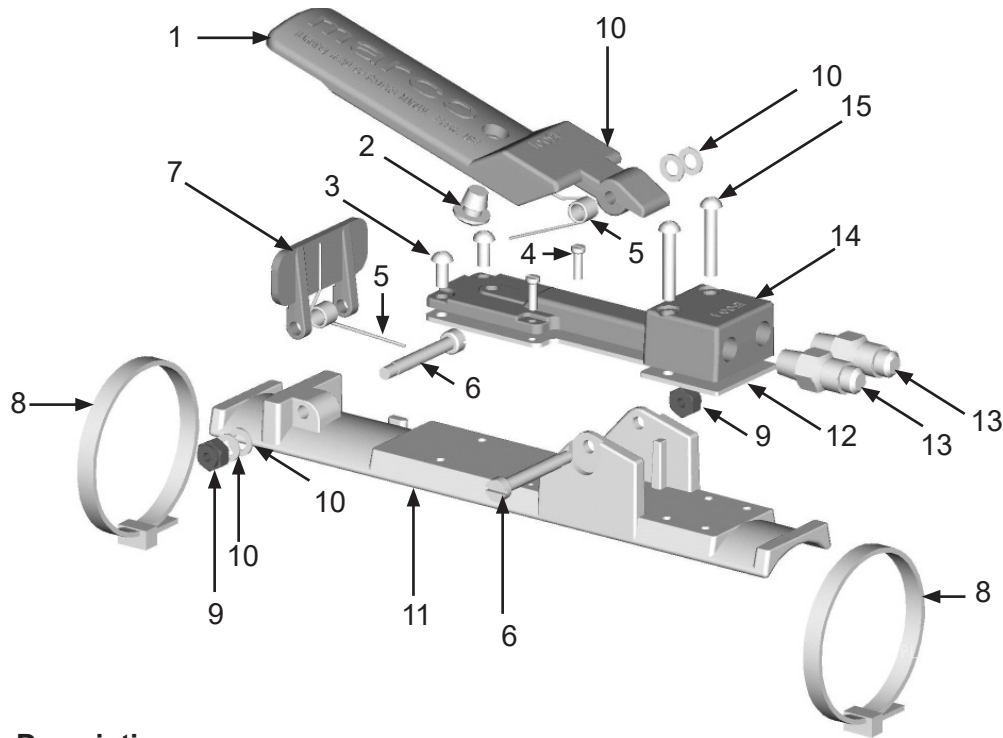
Figure 4: Abrasive Trap



Item #	Part #	Description
Fig. 4		
—	1012000	Abrasive Trap – Complete
1	1012006	Thumb Screw <i>(Two Required)</i>
2	1012007	3/8" x 3/8" Shoulder Bolt <i>(Four Required)</i>
3	1012003	Abrasive Trap Cap <i>(Two Required)</i>
4	1012008	Abrasive Trap Screen Gasket
5	1012004	Abrasive Trap Body
6	1012002	Abrasive Trap O-ring <i>(Two Required)</i>
7	1012005	Cap Lock Bar <i>(Two Required)</i>
8	1012151	1" NPT Close Nipple
9	1012001	Abrasive Trap Screen
—	1012009	Abrasive Trap Repair Kit <i>(Includes Item #'s: 4,6 (Quantity of Two), and 9 (Quantity of Three))</i>

PART NUMBERS & SCHEMATICS

Figure 5: Marco® 150 Remote Control Switch



Item #	Part #	Description
Fig. 5		
—	1015000	Marco® 150P Remote Control Switch – Complete
1	1015001	Handle
2	1015011	Rubber Button Bumper
3	1015014	8-32 x 3/8" Phillips Head Screw <i>(Two Required)</i>
4	1015010	4-40 x 3/8" Fillister Screw <i>(Two Required)</i>
5	1015005	Spring <i>(Two Required)</i>
6	1015008	Shoulder Screw <i>(Two Required)</i>
7	1015003	Safety Tab
8	1015015	Nylon Zip Tie - White <i>(Two Required)</i>
9	1015006	8-32 UNC-2B Nylon Insert Lock Nut <i>(Two Required)</i>
10	1015007	3/8" O.D. x 7/16" I.D. Washer <i>(Four Required)</i>
11	1015002	Body
12	1015012	Adapter Block Gasket
13	1012903	1/8" NPT x 7/16-20 JIC Fitting <i>(Two Required)</i>
14	1015004	Adapter Block
15	1015009	8-32 x 1" Phillips Head Screw <i>(Two Required)</i>
—	1015013	Marco® 150P Remote Control Switch Repair Kit <i>(Includes Item #'s: 7, 12, Two each of 3, 4, 5, 6, 8, 9, 15; Three each of 2; and Four each of 10)</i>
—	106M023	Part Numbers & Schematics Guide – Marco® 150 Pneumatic Remote Control Switch
—	1090023	Operator's Manual – Marco® 150P Remote Control Switch
—	1091032	Hazard Identification Tag

OPTIONAL ACCESSORIES

Part Numbers	PNEUMATIC CONTROL LINE	
	Length	Fittings
10TL3	3 Feet	(4) 1017016
10TL5	5 Feet	(4) 1017016
10TL25	25 Feet	(4) 1017016
10TL50	50 Feet	(4) 1017016
10TL100	100 Feet	(4) 1017016
10TLBK	Per Foot	None



10TL3
10TL5











10TL25
10TL50
10TL100



10TLBK

OPTIONAL ACCESSORIES

Part Numbers		PNEUMATIC CONTROL LINE FITTINGS
	1017016	3/16" Female Nut & Barb
	10C01943	3/16" Female Reusable Hose End
	1017017	Pneumatic Control Line Hose Ferrule
	1017011	Pneumatic Control Line Oetiker® Clamp
	1017001	3/16" Male x Male Hose Union
	1017010	Hose Splicer

		PNEUMATIC CONTROL LINE FITTINGS ACCESSORIES
	10DX855A	Ferrule Crimping Tool
	10DX1098	Oetiker® Clamp Tool

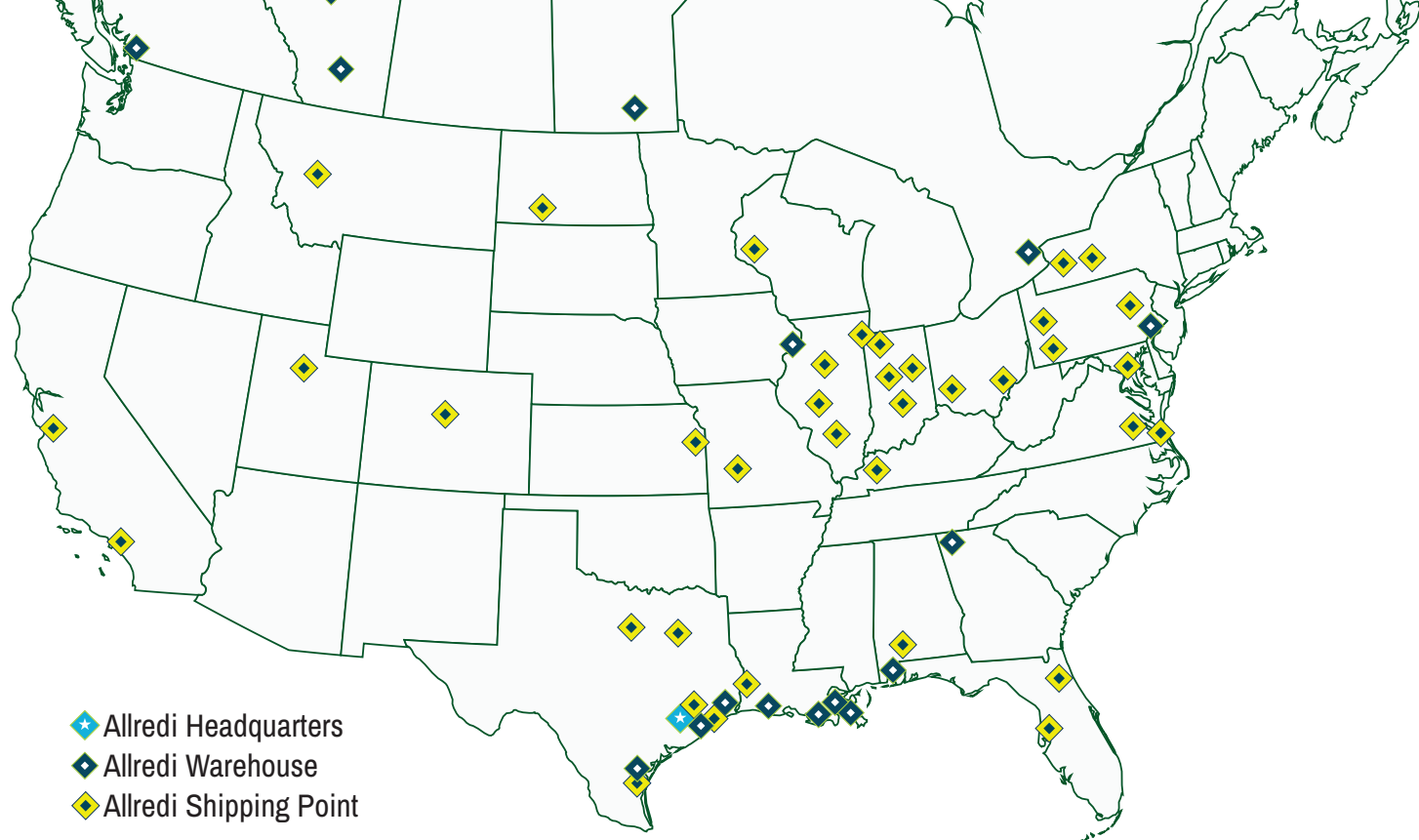
Oetiker® is a registered trademark of Dixon Valve & Coupling Co.

MAINTENANCE NOTES

[illegible]

MAINTENANCE NOTES

[illegible]



ALLREDI THERE

Serving these industries: Bridge, Pipeline, Tank & Tower, Concrete Services, Rail, Shipyard & Marine, Pools & Fountains, and Foundry

UNITED STATES

Pasadena, TX (Headquarters)
844.361.7038

Beaumont, TX
409.722.1284

Bristol, PA
215.826.8080

Corpus Christi, TX
361.887.2038

Davenport, IA
563.324.2519

Deer Park, TX
(Service & Rental Location)
281.930.0905

Duluth, GA
800.535.4564

Gonzales, LA
225.647.7575

Harvey, LA
504.367.8090

Houma, LA
985.580.4273

Lafayette, LA
337.267.1440

Theodore, AL
251.338.7525

CANADA

Calgary, Alberta
403.279.1924

Coquitlam, BC
604.464.6979

Edmonton, Alberta
780.468.2588 (Manus)
780.425.5510 (Mod-U-Blast)

Hamilton, Ontario
905.527.6000 / 888.794.5665

Mississauga, Ontario
905.890.5837

Winnipeg, Manitoba
204.256.3324

WWW.ALLREDI-US.COM / 800.252.7848

WWW.ALLREDI-CA.COM / 800.661.3842

Allredi™ and Marco® are registered trademarks of Allredi, LLC.
Mod-U-Blast® is a registered trademark of Allredi Blast & Abrasives Canada, Inc.
All other brand names or marks are used for identification purposes and are trademarks of their respective owners.

ALLREDI™

Literature #106M014_2/8/2024