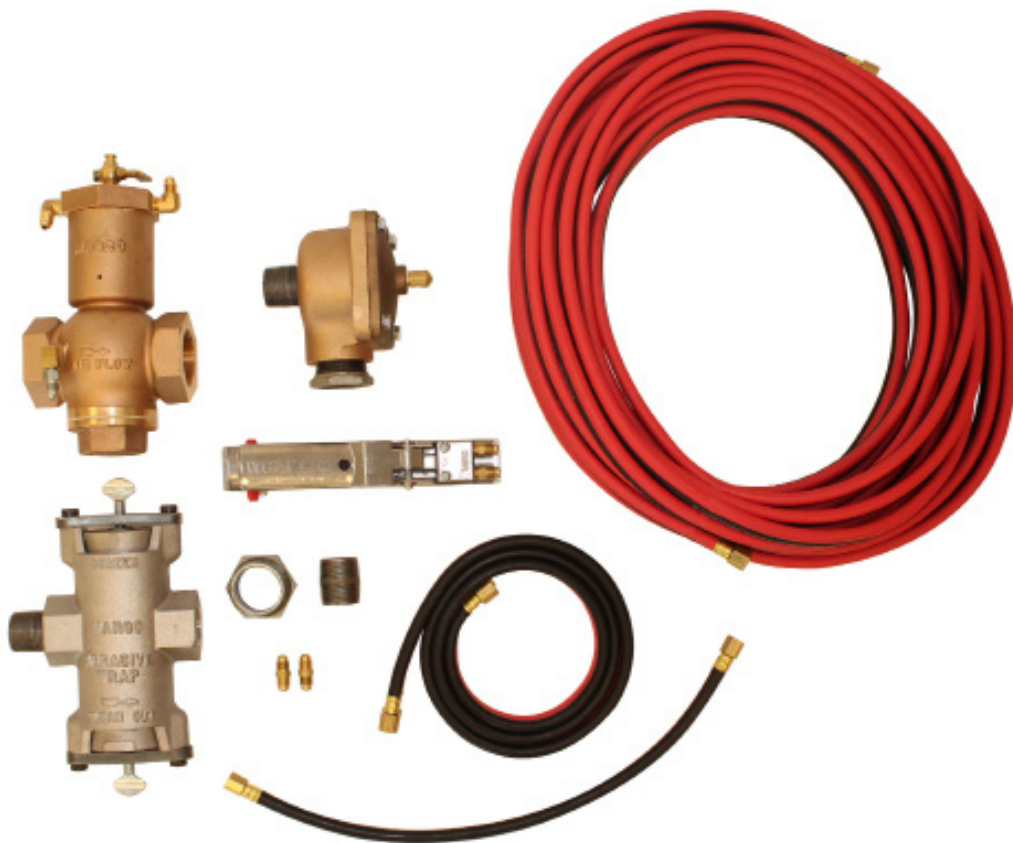




## MARCO® 121P REMOTE CONTROL SYSTEM



## PART NUMBERS AND SCHEMATICS GUIDE

## Company Profile

Allredi was formed in the early 2020, when two of the largest distributors in the blasting, coating, safety, and environmental industry, APE Companies and Marco Group International, joined forces. While the qualities both companies are known for have not changed, a lot about our business is new. New abilities. New agilities. New ways to help you win. This calls for a new name, Allredi.

This name exemplifies what we have become. It is completely oriented to the needs of our customers. To your needs. It says that when you call us for anything – products, service, expert advice, anything – you can consider it done. Or even better, Allredi done.

We are your right-now supplier. From skills to SKUs, we deliver the goods fast. So you can be more agile every minute, every day. This is who we are. This is what our new name means. Go ahead and expect excellence, because we're bringing it.

## Our Mission and Vision

To be the industry's preferred partner in surface preparation solutions through unrivaled technical expertise, customer experience, product availability, and tailored service offerings.

## The Allredi Difference

- **Industry Experience** – With Allredi on your team, you have access to expertise which can only come from decades of industry leadership. We have organized our engineering department, production specialists, customer operations, and safety support into a "Center of Competence." As an Allredi customer, you have access to hundreds of years of cumulative experience related to your operations.
- **Manufacturing Excellence** – Allredi is a U.S. based manufacturer of equipment for the Surface Preparation and Protective Coatings industries. Allredi's engineers benchmark the industry to ensure that we design and manufacture superior products that set the "Gold Standard" for performance, safety, and quality.
- **Legendary Customer Service** – Allredi's legendary customer service team is staffed by friendly, highly-trained individuals who are focused on providing the highest level of product support, order accuracy, and customer satisfaction.
- **Product Availability** – We stock over 10,000 SKU's and have over 45 shipping locations to serve North American and International markets for all major brands of blasting, coating, environmental, and safety equipment. Allredi is your right-now supplier, so you can keep your projects moving. From our foundation of strong relationships, we have built a nationwide network that puts vast inventory and ready service close to our customers. We provide advanced expertise, and we deliver the goods fast – so you can easily access the products and services you need to me more agile every minute, every day.
- **Technology Leadership** – Our website provides: Operator's Manuals, Part Numbers and Schematics Guides, SDS information, and key product features and specifications, providing access to information 24/7.

# TABLE OF CONTENTS

<b>Company Profile</b> .....	<b>1</b>
<b>Table of Contents</b> .....	<b>2</b>
<b>Marco® 121P Remote Control System</b> .....	<b>3-10</b>
Part Number .....	3-4
Part Numbers & Schematics .....	5-10
Marco® 121P Remote Control System .....	5-6
1-1/2" Inlet Valve .....	7
1" Diaphragm Outlet Valve .....	8
Abrasive Trap .....	9
Marco® 150P Remote Control Switch .....	10
<b>Optional Accessories</b> .....	<b>11-12</b>
<b>Maintenance Notes</b> .....	<b>13-14</b>

## PART NUMBERS AND SCHEMATICS GUIDE

Part Numbers	MARCO® 121P REMOTE CONTROL SYSTEM						
	1-1/2" Inlet Valve	1" Diaphragm Outlet Valve	Abrasive Trap	Remote Control Switch	50 Feet of Pneumatic Control Line – Coupled	5 Feet of Pneumatic Control Line – Coupled	18 Inches of Feet of Pneumatic Control Line – Coupled
10106736	1012200	1012150	1012000	1015000	10TL50	10TL5	10CL18

## PART NUMBERS AND SCHEMATICS GUIDE



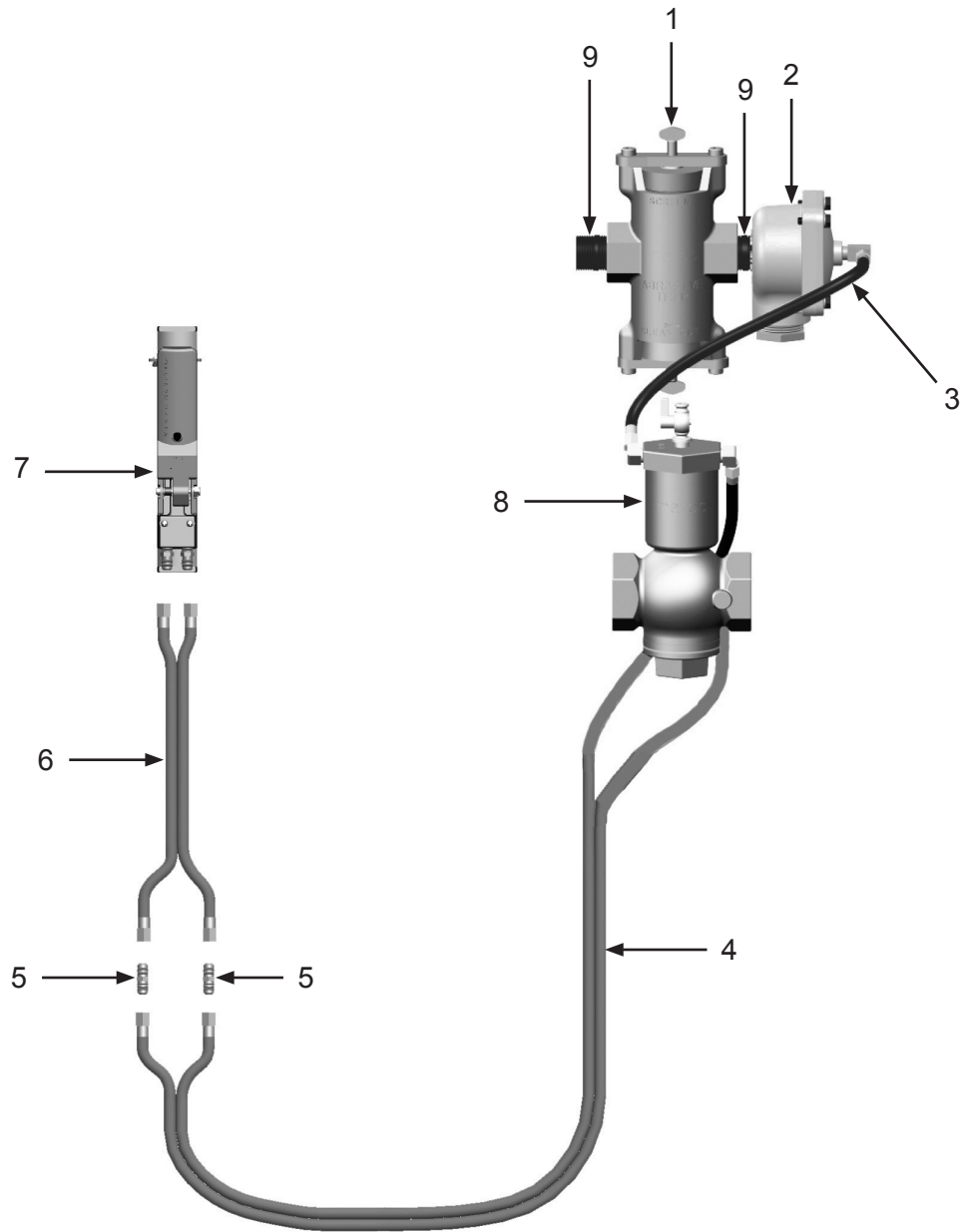
# PART NUMBERS AND SCHEMATICS GUIDE

## Marco® 121P Remote Control System

Item #	Part #	Description
<b>Fig. 1</b>		
—	<b>10106736</b>	<b>Marco® 121P Remote Control System – Complete</b>
1	1012000	Abrasive Trap – Complete <i>(See Figure 4)</i>
2	1012150	1" Diaphragm Outlet Valve <i>(See Figure 3)</i>
3	10CL18	Coupled Pneumatic Control Line – 18 Inches
4	10TL5	Coupled Pneumatic Control Line – 5 Feet
5	1017001	3/16" Control Line Union <i>(Two Required)</i>
6	10TL50 10TL100	Coupled Pneumatic Control Line – 50 Feet Coupled Pneumatic Control Line – 100 Feet <i>(Optional)</i>
7	1015000	Marco® 150P Remote Control Switch – Complete <i>(See Figure 5)</i>
8	1012200	1-1/2" Inlet Valve – Complete <i>(See Figure 2)</i>
9	1012151	1" Close Nipple <i>(Two Required)</i>
—	1011501	1-1/2" NPT (M) x 1-1/4" NPT (F) Bushing <i>(Not Shown)</i>
—	106M142	Part Numbers & Schematics Guide – Marco® 121P Remote Control System
—	106M023	Part Numbers & Schematics Guide – Marco® 150P Remote Control Switch
—	1090142	Operator's Manual – Marco® 121P Remote Control System
—	1090023	Operator's Manual – Marco® 150P Remote Control Switch

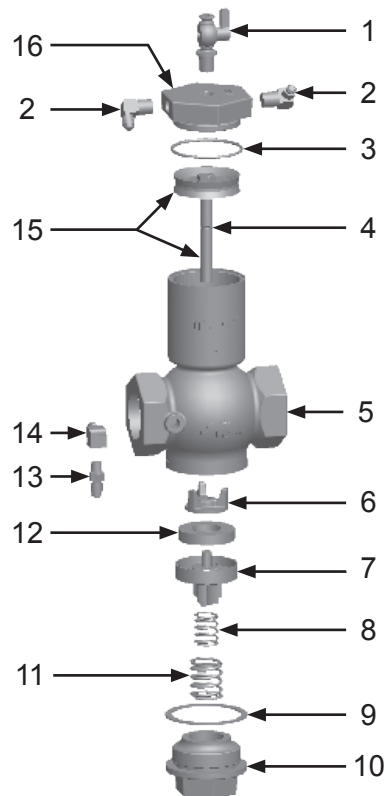
## PART NUMBERS AND SCHEMATICS GUIDE

Figure 1: Marco® 121P Remote Control System



## PART NUMBERS AND SCHEMATICS GUIDE

**Figure 2: 1-1/2" Inlet Valve**



Item #	Part #	Description
--------	--------	-------------

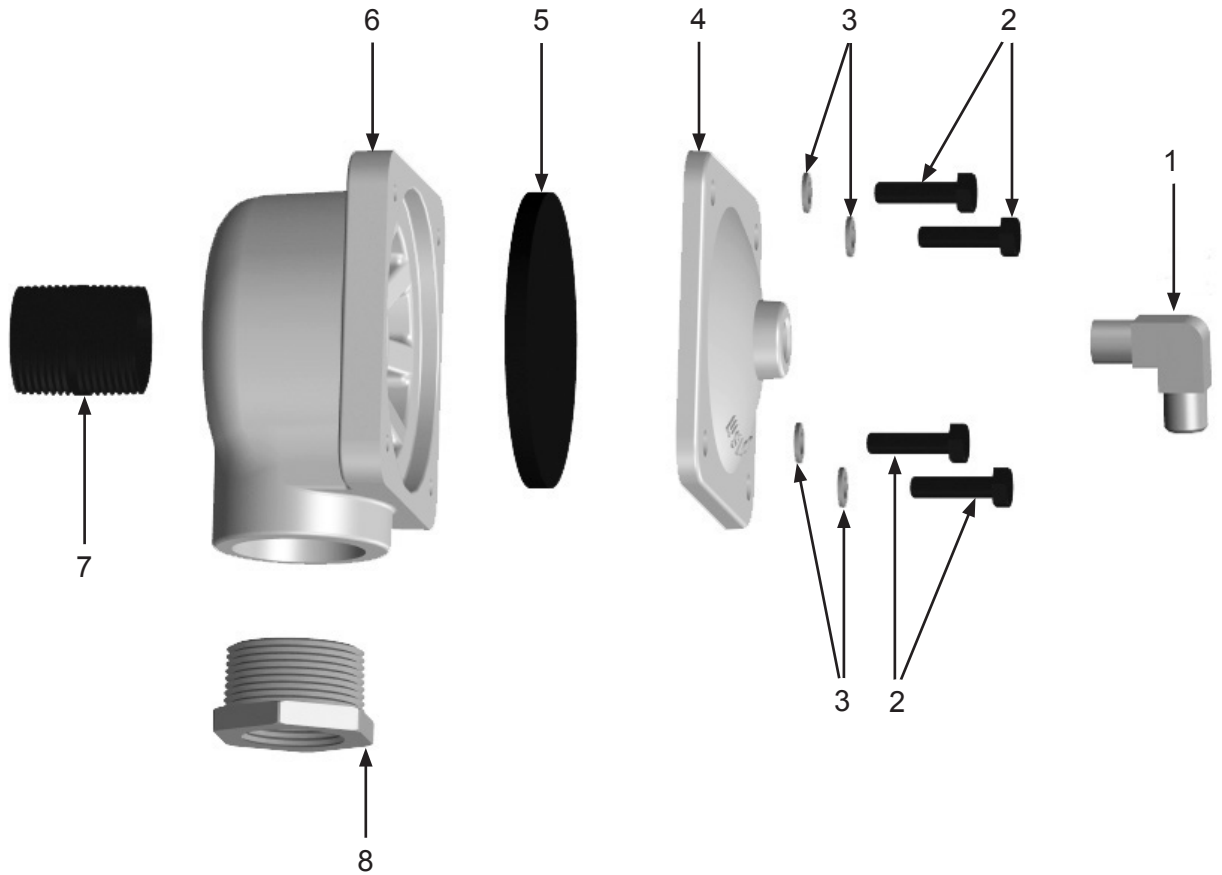
**Fig. 2**

—	<b>1012200</b>	<b>1-1/2" Inlet Valve – Complete</b>
1	1012101	1/4" NPT Petcock
2	1012051	1/4" NPT Brass Elbow <i>(Two Required)</i>
3	1012213	1/8" x 2-1/2" O-Ring
4	1012208	1/16" x 7/16" O-Ring
5	1012204	1-1/2" Body
6	1012207	1-1/2" Plug Washer Retainer
7	1012205	1-1/2" Plug
8	1012105	5/8" x 1-11/16" Inner Spring
9	1012202	1-1/2" Bottom Cap Gasket
10	1012201	1-1/2" Bottom Cap
11	1012203	7/8" x 2-1/16" Outer Spring
12	1012206	1-1/2" Plug Washer
13	1012103	1/8" Adapter with 1/16" Restrictor Port
14	1012113	1/8" Street Elbow
15	1012209	Piston and Rod Assembly
16	1012214	1-1/2" Cylinder Cap
—	1012215	1-1/2" Inlet Valve Repair Kit <i>(Includes Item #'s: 3, 4, 8, 9, 11, and 12 (Quantity of Two))</i>



## PART NUMBERS AND SCHEMATICS GUIDE

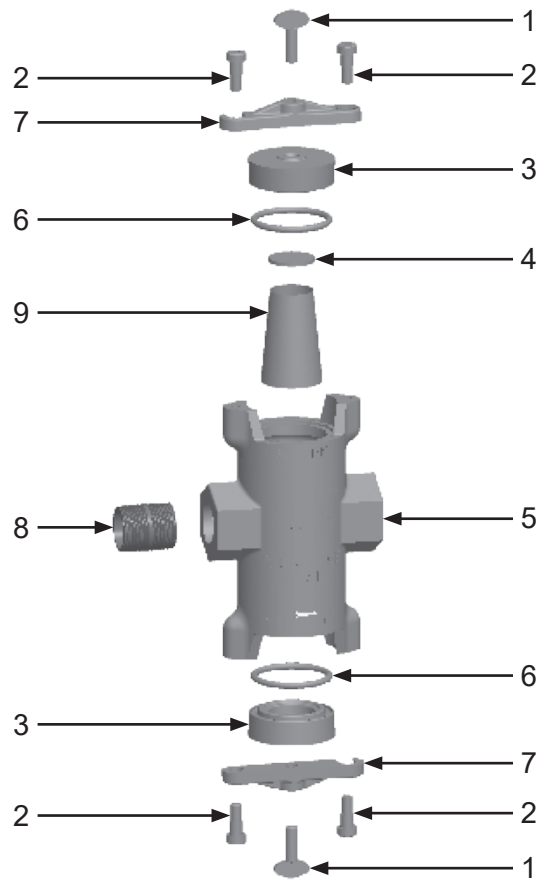
Figure 3: 1" Diaphragm Outlet Valve



Item #	Part #	Description
<b>Fig. 3</b>		
—	<b>1012150</b>	<b>1" Diaphragm Outlet Valve Complete</b>
1	1012051	Elbow 1/4" NPT x 7/16-20 Tap
2	1012154	1/4-20 x 1 Hex Bolt <i>(Four Required)</i>
3	1012153	1/4" Lock Washer <i>(Four Required)</i>
4	1012155	Cap Diaphragm Outlet Valve
5	1012152	Diaphragm Only
6	1012156	Body Diaphragm Outlet Valve
7	1012151	1" Galvanized Close Nipple
8	1012157	1-1/4" x 1" Bushing
—	1091045	Hazard Identification Tag

## PART NUMBERS AND SCHEMATICS GUIDE

**Figure 4: Abrasive Trap**



Item #	Part #	Description
--------	--------	-------------

**Fig. 4**

—	<b>1012000</b>	<b>Abrasive Trap – Complete</b>
---	----------------	---------------------------------

1	1012006	Thumb Screw <i>(Two Required)</i>
---	---------	-----------------------------------

2	1012007	3/8" x 3/8" Shoulder Bolt <i>(Four Required)</i>
---	---------	--

3	1012003	Abrasive Trap Cap <i>(Two Required)</i>
---	---------	---

4	1012008	Abrasive Trap Screen Gasket
---	---------	-----------------------------

5	1012004	Abrasive Trap Body
---	---------	--------------------

6	1012002	Abrasive Trap O-Ring <i>(Two Required)</i>
---	---------	--

7	1012005	Cap Lock Bar <i>(Two Required)</i>
---	---------	------------------------------------

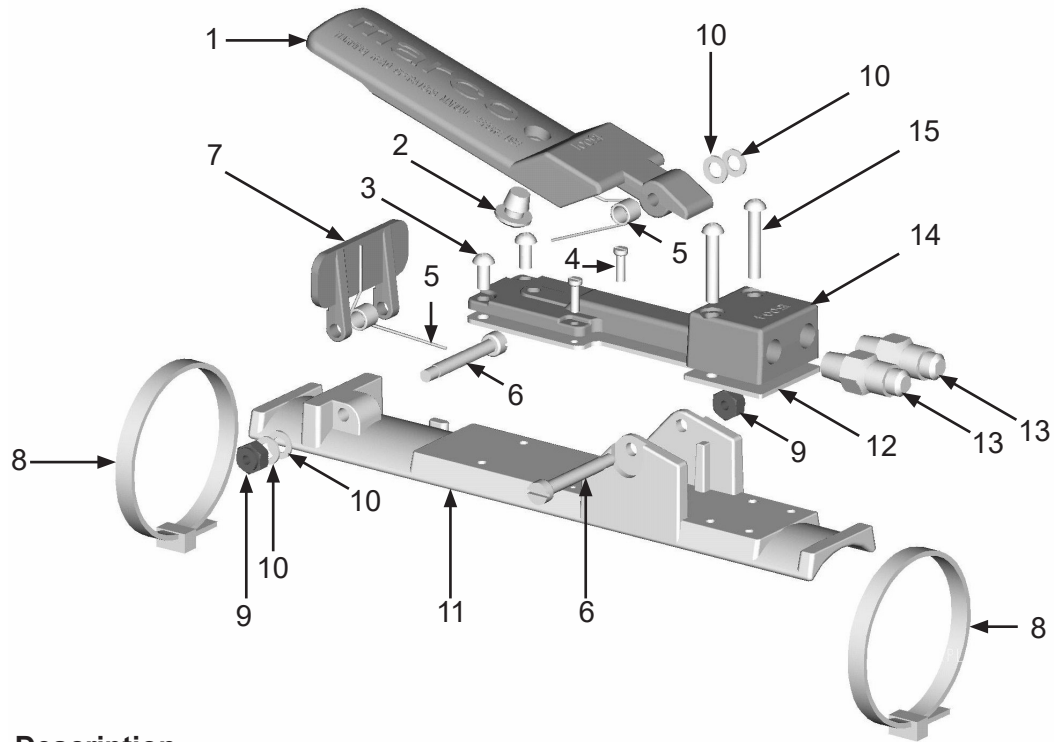
8	1012151	1" NPT Close Nipple
---	---------	---------------------

9	1012001	Abrasive Trap Screen
---	---------	----------------------

—	1012009	Abrasive Trap Repair Kit <i>(Includes Item #'s: 4, 6 (Quantity of Two), and 9 (Quantity of Three))</i>
---	---------	---

## PART NUMBERS AND SCHEMATICS GUIDE

**Figure 5: Marco® 150P Remote Control Switch**



Item #	Part #	Description
--------	--------	-------------

**Fig. 5**

—	<b>1015000</b>	<b>Marco® 150P Remote Control Switch – Complete</b>
1	1015001	Handle
2	1015011	Rubber Button Bumper
3	1015014	8-32 x 3/8" Phillips Head Screw <i>(Two Required)</i>
4	1015010	4-40 x 3/8" Fillister Screw <i>(Two Required)</i>
5	1015005	Spring <i>(Two Required)</i>
6	1015008	Shoulder Screw <i>(Two Required)</i>
7	1015003	Safety Tab
8	1015015	Nylon Zip Tie – White <i>(Two Required)</i>
9	1015006	8-32 UNC-2B Nylon Insert Lock Nut <i>(Two Required)</i>
10	1015007	3/8" O.D. x 7/16" I.D. Washer <i>(Four Required)</i>
11	1015002	Body
12	1015012	Adapter Block Gasket
13	1012903	1/8" NPT x 7/16-20 JIC Fitting <i>(Two Required)</i>
14	1015004	Adapter Block
15	1015009	8-32 x 1" Phillips Head Screw <i>(Two Required)</i>
—	1015013	Marco® 150P Remote Control Switch Repair Kit <i>(Includes Item #'s: 2 (Quantity of Three), 3 (Quantity of Two), 4, 5, 6, 7, 9, 10 (Quantity of Four), 12, and 15)</i>
—	1091032	Hazard Identification Tag
—	106M023	Part Numbers and Schematics Guide – Marco® 150P Remote Control Switch
—	1090023	Operator's Manual – Marco® 150P Remote Control Switch

# OPTIONAL ACCESSORIES

Part Numbers	PNEUMATIC CONTROL LINE	
	Length	Fittings
10TL3	3 Feet	(4) 1017016
10TL5	5 Feet	(4) 1017016
10TL25	25 Feet	(4) 1017016
10TL50	50 Feet	(4) 1017016
10TL100	100 Feet	(4) 1017016
10TLBK	Per Foot	None



10TL3  
10TL5










10TL25  
10TL50  
10TL100



10TLBK

## OPTIONAL ACCESSORIES

	<b>Part Numbers</b>	<b>PNEUMATIC CONTROL LINE FITTINGS ACCESSORIES</b>
		Description
	1017016	3/16" Female Nut & Barb
	10C01943	3/16" Female Reusable Hose End
	1017017	Pneumatic Control Line Hose Ferrule
	1017011	Pneumatic Control Line Oetiker Clamp
	1017001	3/16" Male x Male Hose Union

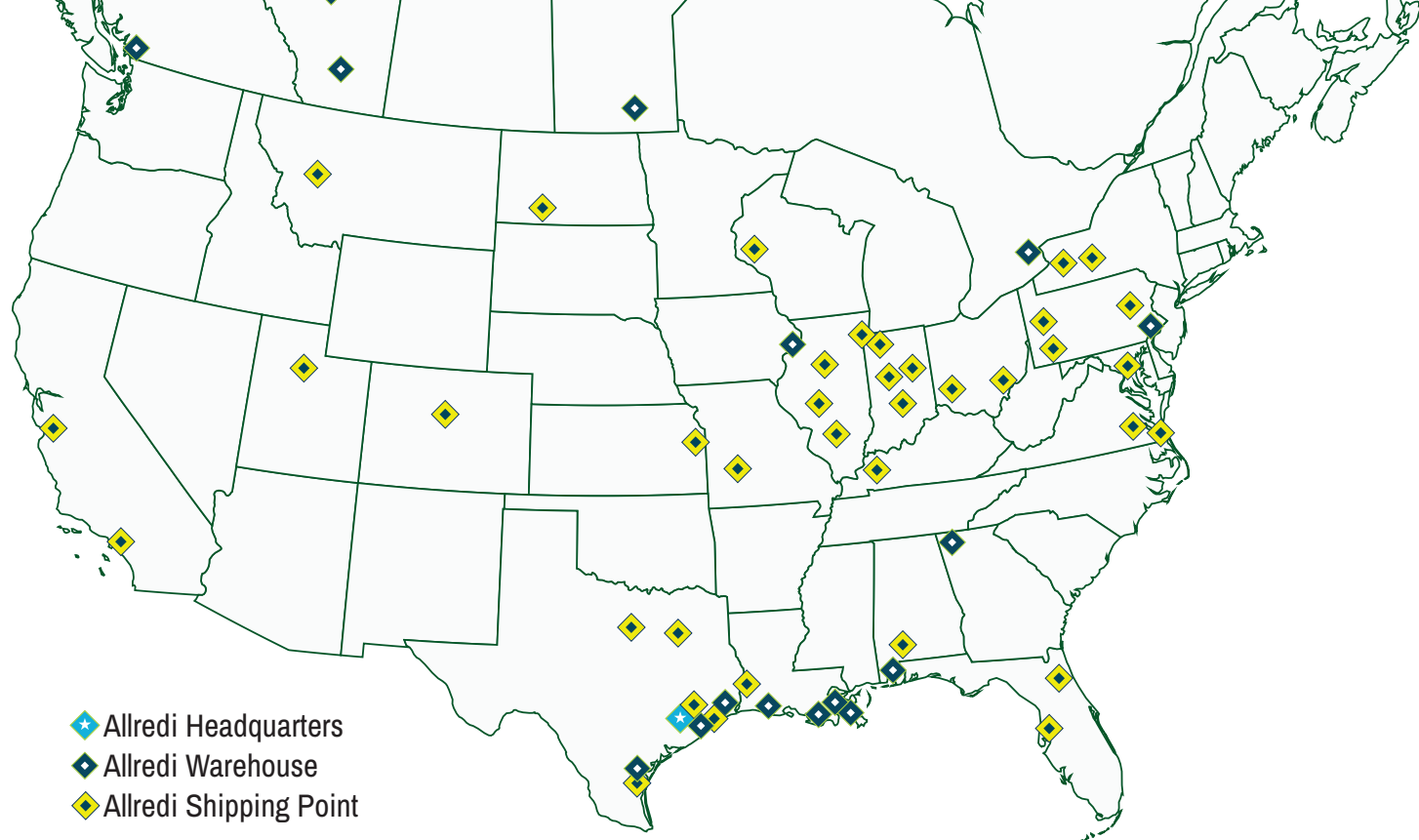
	<b>Part Numbers</b>	<b>PNEUMATIC CONTROL LINE FITTINGS ACCESSORIES</b>
		Description
	10DX855A	Ferrule Crimping Tool
	10DX1098	Oetiker® Clamp Tool

## MAINTENANCE NOTES

[illegible]

## MAINTENANCE NOTES

[illegible]



# ALLREDI THERE

Serving these industries: Bridge, Pipeline, Tank & Tower, Concrete Services, Rail, Shipyard & Marine, Pools & Fountains, and Foundry

## UNITED STATES

**Pasadena, TX (Headquarters)**  
844.361.7038

**Beaumont, TX**  
409.722.1284

**Bristol, PA**  
215.826.8080

**Corpus Christi, TX**  
361.887.2038

**Davenport, IA**  
563.324.2519

**Deer Park, TX**  
(Service & Rental Location)  
281.930.0905

**Duluth, GA**  
800.535.4564

**Gonzales, LA**  
225.647.7575

**Harvey, LA**  
504.367.8090

**Houma, LA**  
985.580.4273

**Lafayette, LA**  
337.267.1440

**Theodore, AL**  
251.338.7525

## CANADA

**Calgary, Alberta**  
403.279.1924

**Coquitlam, BC**  
604.464.6979

**Edmonton, Alberta**  
780.468.2588 (Manus)  
780.425.5510 (Mod-U-Blast)

**Hamilton, Ontario**  
905.527.6000 / 888.794.5665

**Mississauga, Ontario**  
905.890.5837

**Winnipeg, Manitoba**  
204.256.3324

**WWW.ALLREDI-US.COM / 800.252.7848**

**WWW.ALLREDI-CA.COM / 800.661.3842**

Allredi™ and Marco® are registered trademarks of Allredi, LLC.  
Mod-U-Blast® is a registered trademark of Allredi Blast & Abrasives Canada, Inc.  
All other brand names or marks are used for identification purposes and are trademarks of their respective owners.



Literature #106M142\_2/8/2024