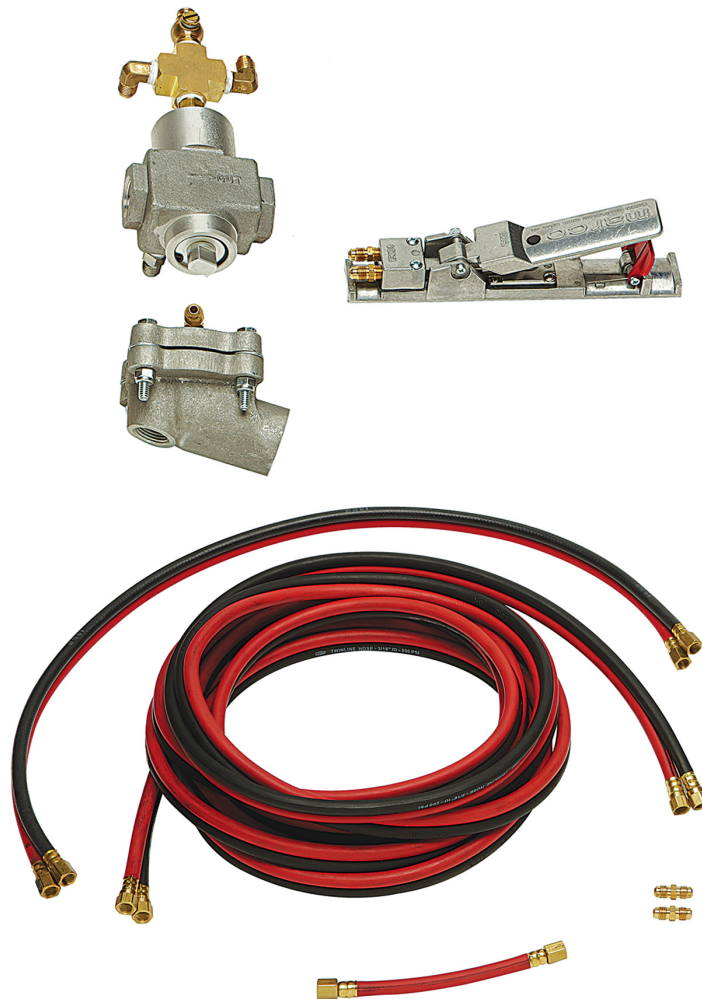




# MARCO® 120P REMOTE CONTROL SYSTEM



## PART NUMBERS AND SCHEMATICS GUIDE

## Company Profile

Allredi was formed in the early 2020, when two of the largest distributors in the blasting, coating, safety, and environmental industry, APE Companies and Marco Group International, joined forces. While the qualities both companies are known for have not changed, a lot about our business is new. New abilities. New abilities. New ways to help you win. This calls for a new name, Allredi.

This name exemplifies what we have become. It is completely oriented to the needs of our customers. To your needs. It says that when you call us for anything – products, service, expert advice, anything – you can consider it done. Or even better, Allredi done.

We are your right-now supplier. From skills to SKUs, we deliver the goods fast. So you can be more agile every minute, every day. This is who we are. This is what our new name means. Go ahead and expect excellence, because we're bringing it.

## Our Mission and Vision

To be the industry's preferred partner in surface preparation solutions through unrivaled technical expertise, customer experience, product availability, and tailored service offerings.

## The Allredi Difference

- **Industry Experience** – With Allredi on your team, you have access to expertise which can only come from decades of industry leadership. We have organized our engineering department, production specialists, customer operations, and safety support into a "Center of Competence." As an Allredi customer, you have access to hundreds of years of cumulative experience related to your operations.
- **Manufacturing Excellence** – Allredi is a U.S. based manufacturer of equipment for the Surface Preparation and Protective Coatings industries. Allredi's engineers benchmark the industry to ensure that we design and manufacture superior products that set the "Gold Standard" for performance, safety, and quality.
- **Legendary Customer Service** – Allredi's legendary customer service team is staffed by friendly, highly-trained individuals who are focused on providing the highest level of product support, order accuracy, and customer satisfaction.
- **Product Availability** – We stock over 10,000 SKU's and have over 45 shipping locations to serve North American and International markets for all major brands of blasting, coating, environmental, and safety equipment. Allredi is your right-now supplier, so you can keep your projects moving. From our foundation of strong relationships, we have built a nationwide network that puts vast inventory and ready service close to our customers. We provide advanced expertise, and we deliver the goods fast – so you can easily access the products and services you need to me more agile every minute, every day.
- **Technology Leadership** – Our website provides: Operator's Manuals, Part Numbers and Schematics Guides, SDS information, and key product features and specifications, providing access to information 24/7.

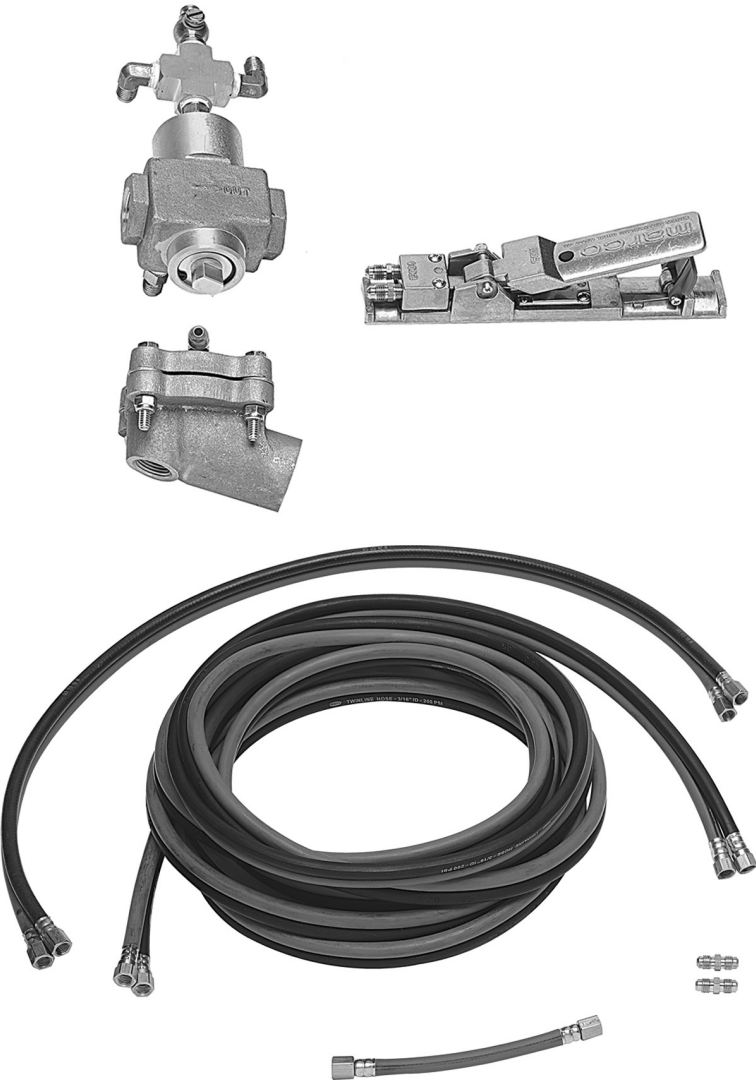
# TABLE OF CONTENTS

<b>Company Profile</b> .....	<b>1</b>
<b>Table of Contents</b> .....	<b>2</b>
<b>Marco® 120P Remote Control System</b> .....	<b>3-12</b>
Part Number .....	3-4
Part Numbers & Schematics .....	5-9
Marco® 120P Remote Control System .....	5-6
1/2" Inlet Valve .....	7-8
1/2" Diaphragm Outlet Valve .....	9
Marco® 150P Remote Control Switch .....	10
Optional Accessories .....	11-12
<b>Maintenance Notes</b> .....	<b>13-14</b>

## PART NUMBER

Part Number	MARCO® 120P REMOTE CONTROL SYSTEM					
	1/2" Inlet Valve	1/2" Diaphragm Outlet Valve	Remote Control Switch	25 Feet of Pneumatic Control Line – Coupled	3 Feet of Pneumatic Control Line – Coupled	6 Inches of Feet of Pneumatic Control Line – Coupled
10101775	10100534	10100676	1015000	10TL25	10TL3	10CL6

MARCO® 120P REMOTE CONTROL SYSTEM

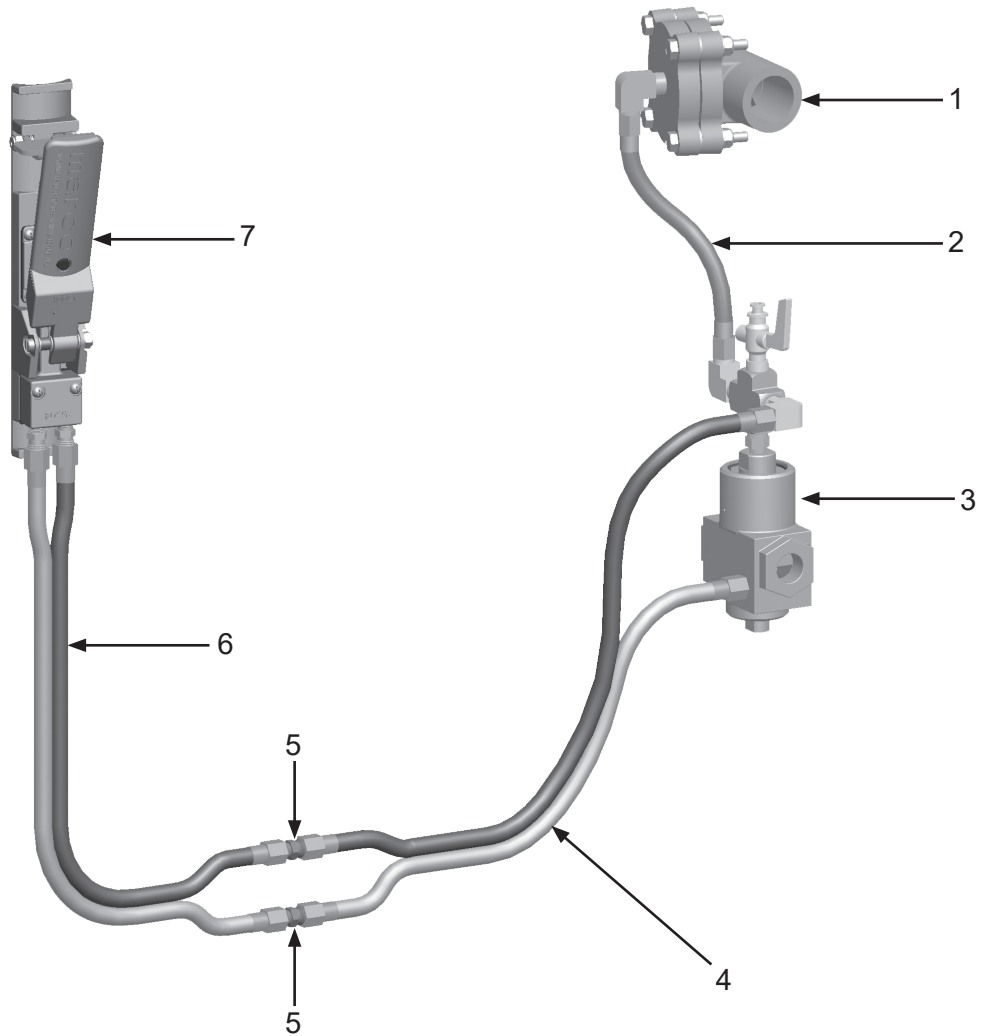


## PART NUMBERS & SCHEMATICS

Item #	Part #	Description
<b>Fig. 1</b>		
—	<b>10101775</b>	<b>Marco® 120P Remote Control System – Complete</b>
1	10100676	1/2" Diaphragm Outlet Valve ( <i>See Fig. 3</i> )
2	10CL6	Pneumatic Control Line – 6 Inches
3	10100534	1/2" Inlet Valve ( <i>See Fig. 2</i> )
4	10TL3	Pneumatic Control Line – 3 Feet
5	1017001	3/16" Hose Union ( <i>Two Required</i> )
6	10TL25	Pneumatic Control Line – 25 Feet
7	1015000	Marco® 150P Remote Control Switch
—	106M100	Part Numbers & Schematics Guide – Marco® 120P Remote Control System
—	106M023	Part Numbers & Schematics Guide – Marco® 150P Remote Control Switch
—	1090100	Operator's Manual – Marco® 120P Remote Control System
—	1090023	Operator's Manual – Marco® 150P Remote Control Switch
—	1091045	Hazard Identification Tag

## PART NUMBERS & SCHEMATICS

Figure 1: Marco® 120P Remote Control System



## PART NUMBERS & SCHEMATICS

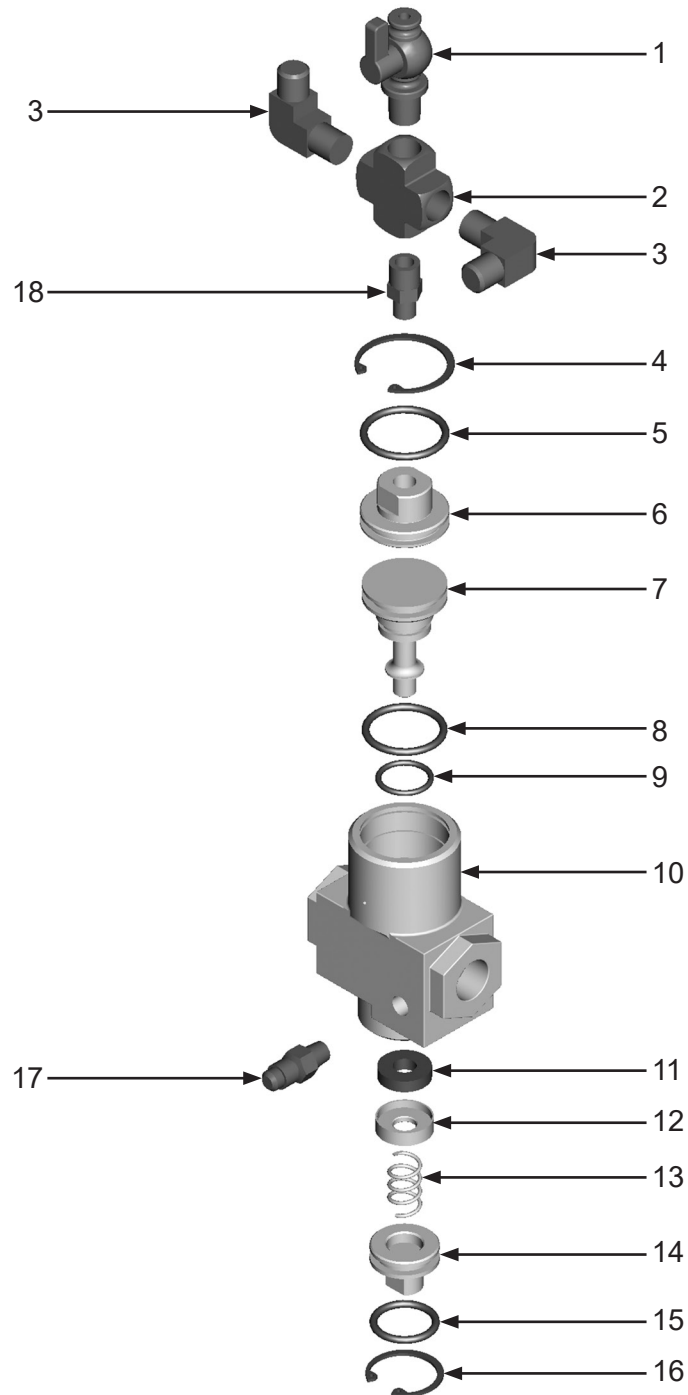
### 1/2" Inlet Valve

Item #	Part #	Description
<b>Fig. 2</b>		
—	<b>10100534</b>	<b>1/2" Inlet Valve – Complete</b>
1	1012101	1/4" Petcock
2	10101143	1/4" NPT Brass Cross
3	1012051	1/4" NPT x 7/16-20 Elbow <i>(Two Required)</i>
4	10100538	Top Snap Ring
5	10100545	Top Seal O-ring
6	10100537	Top Seal Retainer
7	10100541	Piston
8	10100548	Upper O-ring
9	10100547	Lower O-ring
10	10100535	Valve Body
11	10100543	Plug Washer
12	10100542	Valve Washer Cup
13	10100544	Spring
14	10100539	Bottom Seal Retainer
15	10100546	Bottom Seal O-ring
16	10100540	Bottom Snap Ring
17	1012103	1/8" NPT x 7/16-20 Fitting
18	10PVFIT	1/4" x 1/8" Hex Union
—	10101815	Service Kit <i>(Includes Item #'s: 4, 5, 8, 9, 11, 12, 13, 15, and 16)</i>
—	106M100	Part Numbers and Schematics Guide – Marco® 120P Remote Control System
—	1090100	Operator's Manual – Marco® 120P Remote Control System



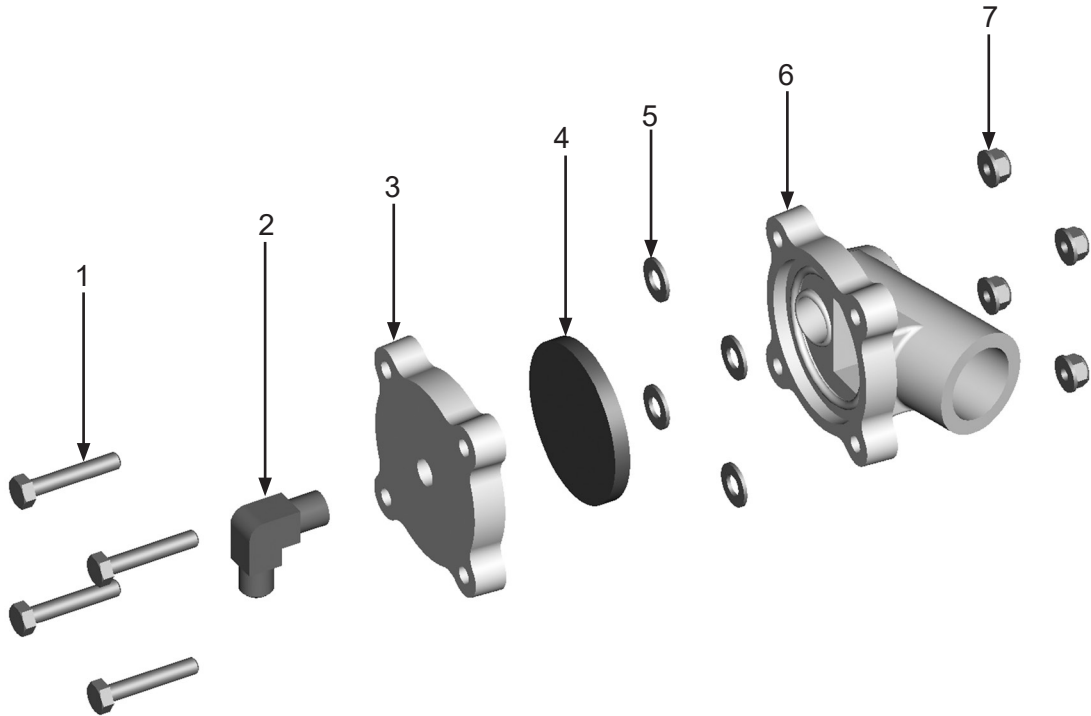
## PART NUMBERS & SCHEMATICS

Figure 2: 1/2" Inlet Valve



## PART NUMBERS & SCHEMATICS

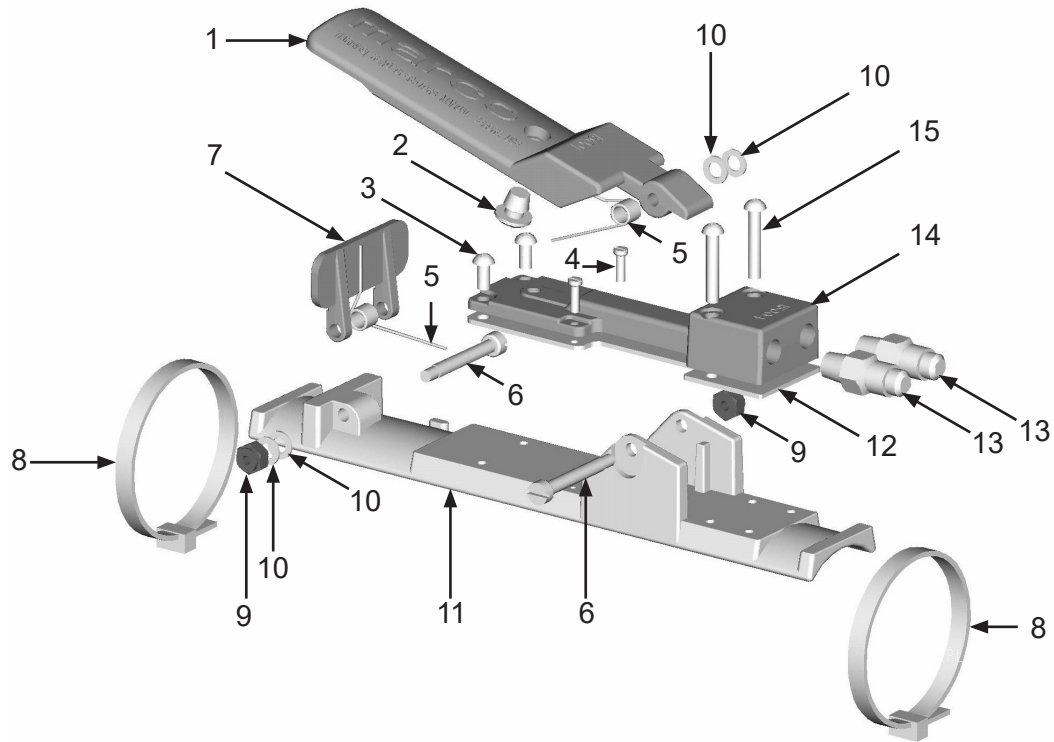
Figure 3: 1/2" Diaphragm Outlet Valve



Item #	Part #	Description
<b>Fig. 3</b>		
—	<b>10100676</b>	<b>1/2" Diaphragm Outlet Valve – Complete</b>
1	1019044	1/4-20 x 1-1/2" Bolt ( <i>Four Required</i> )
2	1012051	1/4" NPT x 7/16-20 Elbow
3	10100677	Valve Cap
4	10100681	Diaphragm
5	1014017	1/4" Flat Washer ( <i>Four Required</i> )
6	10100679	Valve Body
7	1012323	1/4-20 Nylon Lock Nut ( <i>Four Required</i> )
—	106M100	Part Numbers and Schematics Guide – Marco® 120P Remote Control System
—	1090100	Operator's Manual – Marco® 120P Remote Control System

## PART NUMBERS & SCHEMATICS

Figure 4: Marco® 150P Remote Control Switch



Item #	Part #	Description
--------	--------	-------------

Fig. 4

—	<b>1015000</b>	<b>Marco® 150P Remote Control Switch – Complete</b>
1	1015001	Handle
2	1015011	Rubber Button Bumper
3	1015014	8-32 x 3/8" Phillips Head Screw <i>(Two Required)</i>
4	1015010	4-40 x 3/8" Fillister Screw <i>(Two Required)</i>
5	1015005	Spring <i>(Two Required)</i>
6	1015008	Shoulder Screw <i>(Two Required)</i>
7	1015003	Safety Tab
8	1015015	Nylon Zip Tie – White <i>(Two Required)</i>
9	1015006	8-32 UNC-2B Nylon Insert Lock Nut <i>(Two Required)</i>
10	1015007	3/8" O.D. x 7/16" I.D. Washer <i>(Four Required)</i>
11	1015002	Body
12	1015012	Adapter Block Gasket
13	1012903	1/8" NPT x 7/16-20 JIC Fitting <i>(Two Required)</i>
14	1015004	Adapter Block
15	1015009	8-32 x 1" Phillips Head Screw <i>(Two Required)</i>
—	1015013	Marco® 150P Remote Control Switch Repair Kit <i>(Includes Item #'s: 7, 12; two each of 3, 4, 5, 6, 9 and 15; three each of 2; and four each of 10)</i>
—	106M023	Part Numbers and Schematics Guide – Marco® 150P Remote Control Switch
—	1090023	Operator's Manual – Marco® 150P Remote Control Switch
—	1091032	Hazard Identification Tag

# OPTIONAL ACCESSORIES

Part Numbers	PNEUMATIC CONTROL LINE	
	Length	Fittings
10TL3	3 Feet	(4) 1017016
10TL5	5 Feet	(4) 1017016
10TL25	25 Feet	(4) 1017016
10TL50	50 Feet	(4) 1017016
10TL100	100 Feet	(4) 1017016
10TLBK	Per Feet	None



10TL3  
10TL5










10TL25  
10TL50  
10TL100



10TLBK

## OPTIONAL ACCESSORIES

	Part Numbers	PNEUMATIC CONTROL LINE FITTINGS
	1017016	3/16" Female Nut & Barb
	10C01943	3/16" Female Reusable Hose End
	1017017	Pneumatic Control Line Hose Ferrule
	1017011	Pneumatic Control Line Oetiker Clamp
	1017001	3/16" Male x Male Hose Union

	Part Numbers	PNEUMATIC CONTROL LINE FITTINGS ACCESSORIES
	10DX855A	Ferrule Crimping Tool
	10DX1098	Oetiker® Clamp Tool

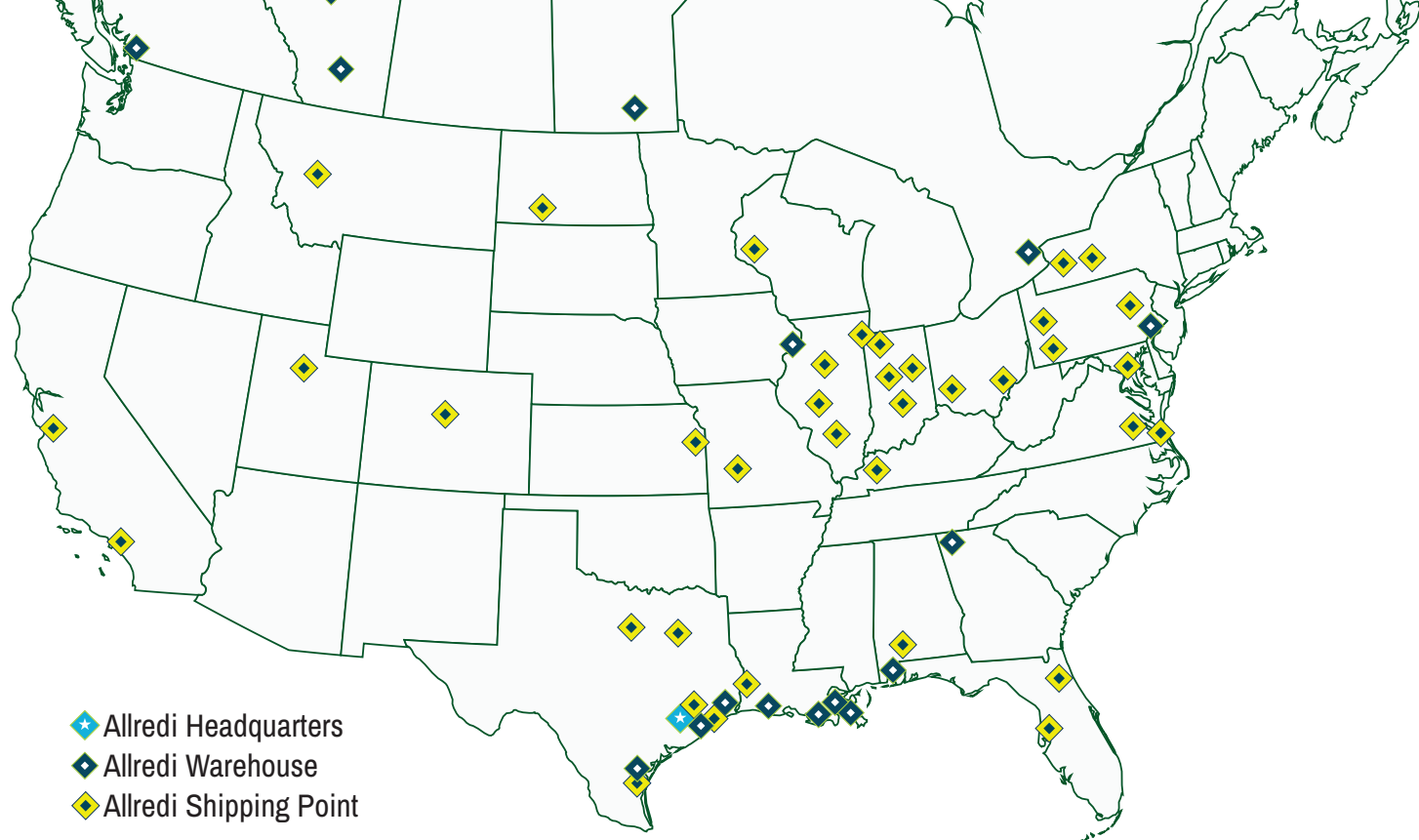
Oetiker® is a registered trademark of Dixon Valve & Coupling Co.

## MAINTENANCE NOTES

[illegible]

## MAINTENANCE NOTES

[illegible]



## ALLREDI THERE

Serving these industries: Bridge, Pipeline, Tank & Tower, Concrete Services, Rail, Shipyard & Marine, Pools & Fountains, and Foundry

### UNITED STATES

**Pasadena, TX (Headquarters)**  
844.361.7038

**Beaumont, TX**  
409.722.1284

**Bristol, PA**  
215.826.8080

**Corpus Christi, TX**  
361.887.2038

**Davenport, IA**  
563.324.2519

**Deer Park, TX**  
(Service & Rental Location)  
281.930.0905

**Duluth, GA**  
800.535.4564

**Gonzales, LA**  
225.647.7575

**Harvey, LA**  
504.367.8090

**Houma, LA**  
985.580.4273

**Lafayette, LA**  
337.267.1440

**Theodore, AL**  
251.338.7525

### CANADA

**Calgary, Alberta**  
403.279.1924

**Coquitlam, BC**  
604.464.6979

**Edmonton, Alberta**  
780.468.2588 (Manus)  
780.425.5510 (Mod-U-Blast)

**Hamilton, Ontario**  
905.527.6000 / 888.794.5665

**Mississauga, Ontario**  
905.890.5837

**Winnipeg, Manitoba**  
204.256.3324

**WWW.ALLREDI-US.COM / 800.252.7848**

**WWW.ALLREDI-CA.COM / 800.661.3842**

Allredi™ and Marco® are registered trademarks of Allredi, LLC.  
Mod-U-Blast® is a registered trademark of Allredi Blast & Abrasives Canada, Inc.  
All other brand names or marks are used for identification purposes and are trademarks of their respective owners.

**ALLREDI™**

Literature #106M100\_3/12/2016