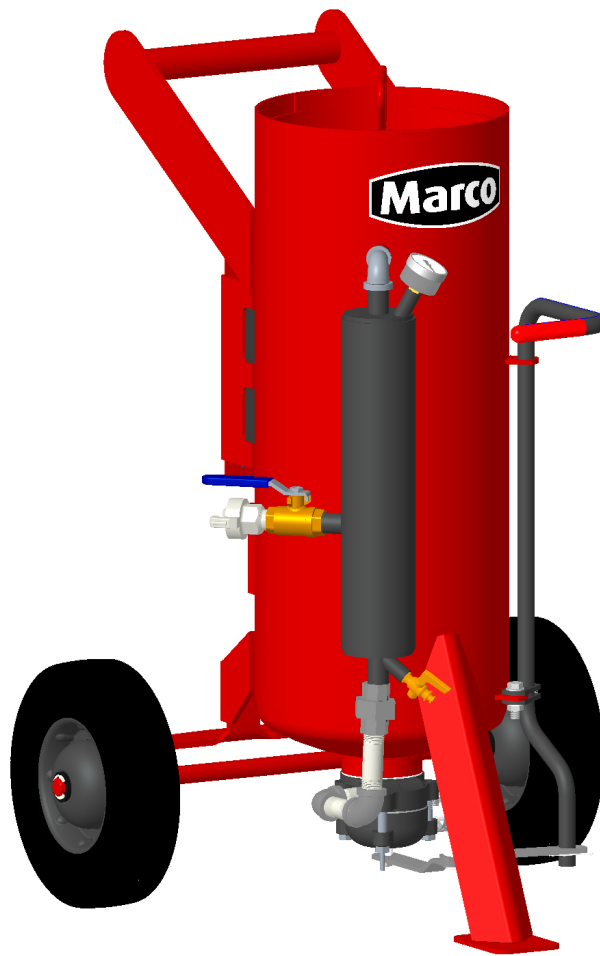




MARCO® 1.5 CU. FT. L-SERIES ABRASIVE BLASTING POT



Powered by **ALLREDI**

PART NUMBERS AND SCHEMATICS GUIDE

Company Profile

Allredi was formed in the early 2020, when two of the largest distributors in the blasting, coating, safety, and environmental industry, APE Companies and Marco Group International, joined forces. While the qualities both companies are known for have not changed, a lot about our business is new. New abilities. New agilities. New ways to help you win. This calls for a new name, Allredi.

This name exemplifies what we have become. It is completely oriented to the needs of our customers. To your needs. It says that when you call us for anything – products, service, expert advice, anything – you can consider it done. Or even better, Allredi done.

We are your right-now supplier. From skills to SKUs, we deliver the goods fast. So you can be more agile every minute, every day. This is who we are. This is what our new name means. Go ahead and expect excellence, because we're bringing it.

Our Mission and Vision

To be the industry's preferred partner in surface preparation solutions through unrivaled technical expertise, customer experience, product availability, and tailored service offerings.

The Allredi Difference

- **Industry Experience** – With Allredi on your team, you have access to expertise which can only come from decades of industry leadership. We have organized our engineering department, production specialists, customer operations, and safety support into a "Center of Competence." As an Allredi customer, you have access to hundreds of years of cumulative experience related to your operations.
- **Manufacturing Excellence** – Allredi is a U.S. based manufacturer of equipment for the Surface Preparation and Protective Coatings industries. Allredi's engineers benchmark the industry to ensure that we design and manufacture superior products that set the "Gold Standard" for performance, safety, and quality.
- **Legendary Customer Service** – Allredi's legendary customer service team is staffed by friendly, highly-trained individuals who are focused on providing the highest level of product support, order accuracy, and customer satisfaction.
- **Product Availability** – We stock over 10,000 SKU's and have over 45 shipping locations to serve North American and International markets for all major brands of blasting, coating, environmental, and safety equipment. Allredi is your right-now supplier, so you can keep your projects moving. From our foundation of strong relationships, we have built a nationwide network that puts vast inventory and ready service close to our customers. We provide advanced expertise, and we deliver the goods fast – so you can easily access the products and services you need to me more agile every minute, every day.
- **Technology Leadership** – Our website provides: Operator's Manuals, Part Numbers and Schematics Guides, SDS information, and key product features and specifications, providing access to information 24/7.

TABLE OF CONTENTS

Company Profile1

Part Numbers3

Part Numbers and Schematics5

 Marco® 1.5 Cu. Ft. L-Series Abrasive Blasting Pot -
 Units Built After June 2024 5

 Marco® 1.5 Cu. Ft. L-Series Abrasive Blasting Pot -
 Units Built April 2021-June 2024 7

 Marco® 1.5 Cu. Ft. L-Series Abrasive Blasting Pot -
 Units Built before April 2021 9

 Marco® 2-Hole Junior Abrasive Mixing Valve - Complete . . 11

Optional Accessories13

 Lid With Screen 13

 Type I Ceramic Nozzles 13

 Blast Hose and Accessories 14

 Hose End Assemblies. 15

Maintenance Notes16-18

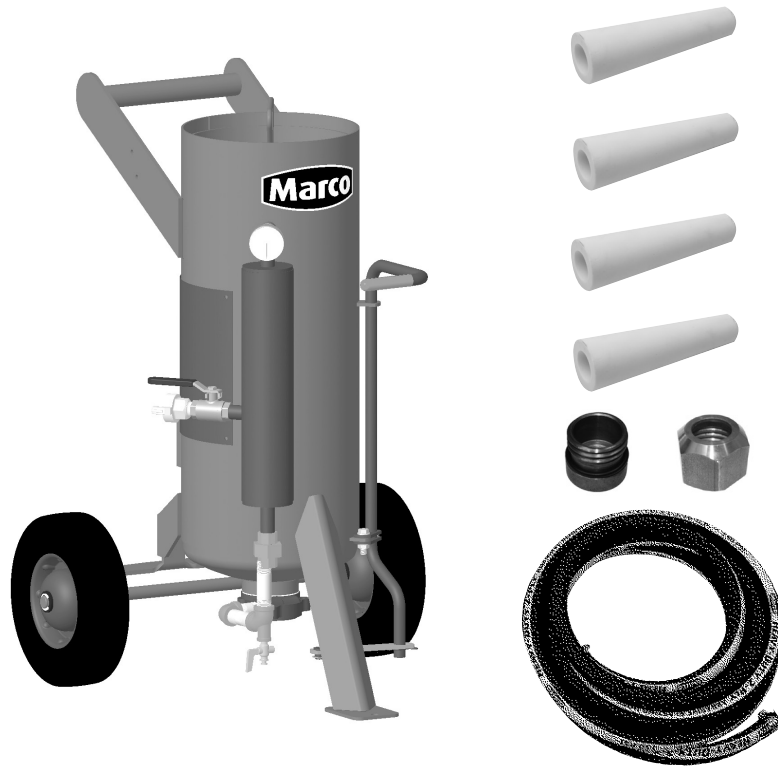
PART NUMBERS

| MARCO® 1.5 CU. FT. L-SERIES ABRASIVE BLASTING POT | | | | | |
|---|-------------------------|-----------------------|----------------------------|----------------------------------|--------------------|
| Part Numbers | Abrasive Metering Valve | Remote Control Switch | Ceramic Nozzles | 1/2" I.D. Abrasive Blasting Hose | Moisture Separator |
| 1001155 | 2-Hole Junior | — | (2) 10CN251, (2) 10CN21251 | 25 Ft. | 10L100129 |
| 1001156 | 2-Hole Junior | 10L66EVD | (2) 10CN251, (2) 10CN21251 | 25 Ft. | 10L100129 |



PART NUMBERS

Marco® 1.5 Cu. Ft. L-Series Abrasive Blasting Pot – 1001155



Marco® 1.5 Cu. Ft. L-Series Abrasive Blasting Pot – 1001156



PART NUMBERS AND SCHEMATICS

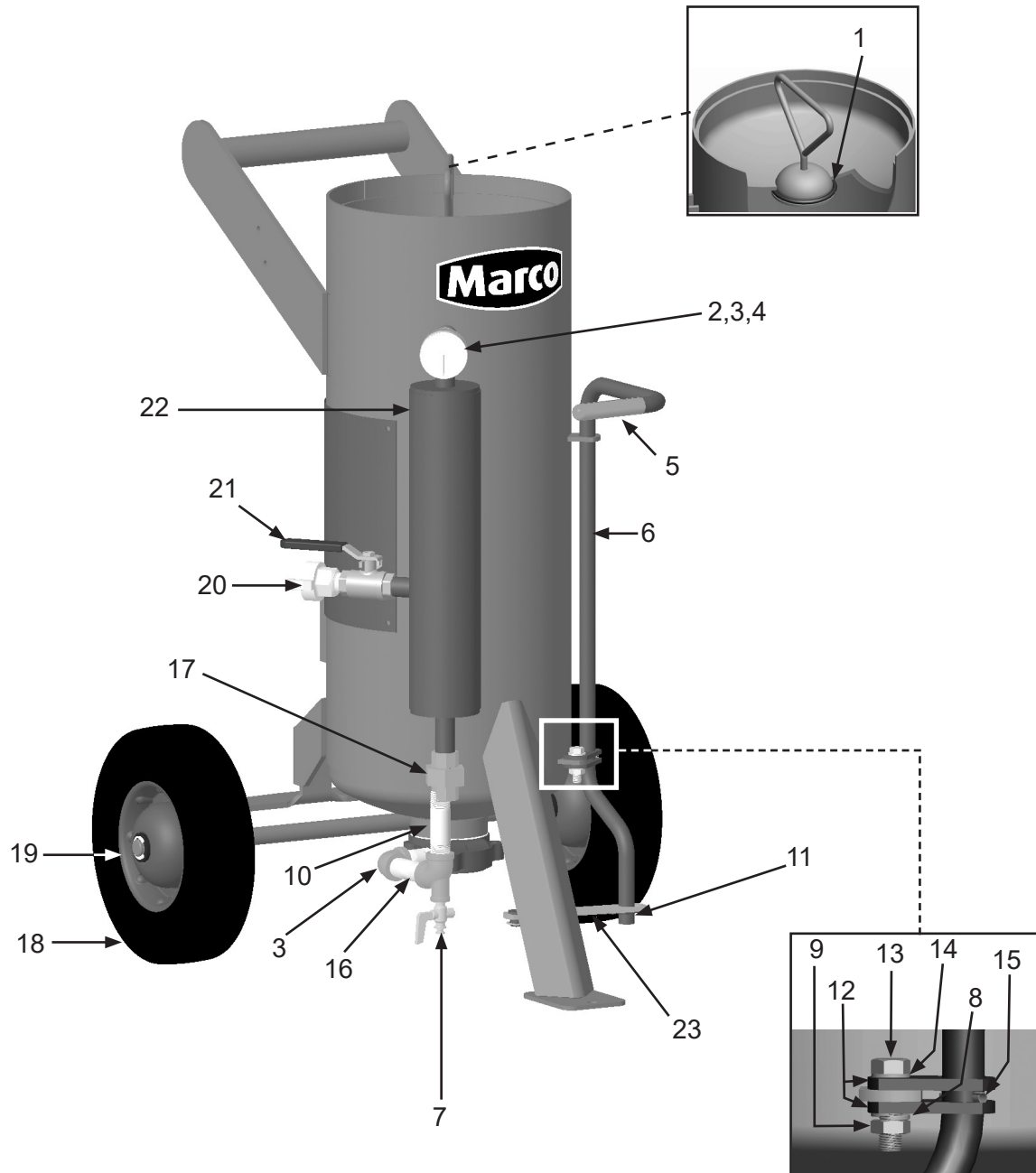
Marco® 1.5 Cu. Ft. L-Series Abrasive Blasting Pot - Units built after June 2024

| Item # | Part # | Description |
|---------------|----------------|---|
| Fig. 1 | | |
| 1 | 10L650R | Filler Plug O-Ring |
| 2 | 20PFHA24SA0806 | 3/8" M x 1/2" M Hex Nipple |
| 3 | 10102337 | 1/2" x 1/2" 90° Elbow with Side-Out <i>(Two Required)</i> |
| 4 | 1028606 | Pressure Gauge |
| 5 | 10L103LG | Control Lever Grip |
| 6 | 10L100268 | Control Lever <i>(Includes Item #'s: 5 and 1)</i> |
| 7 | 10L348 | 1/8" Petcock |
| 8 | 10L805015 | 3/8" Lock Washer |
| 9 | 10L804303 | 3/8-24 Hex Nut |
| 10 | 10L803042 | 1/2" NPT x 3" Nipple |
| 11 | 10L103H | Hair Spring Clip |
| 12 | 10L100058P | Control Lever Bracket <i>(Two Required)</i> |
| 13 | 10L805318 | 3/8-24 x 1-1/4" Bolt |
| 14 | 1014241 | 3/8" Flat Washer |
| 15 | 10L800085 | Roll Pin, 3/16" x 1" |
| 16 | 10L803038 | 1/2" NPT x 2" Nipple <i>(Two Required)</i> |
| 17 | 10L806176 | 1/2" NPT Union |
| 18 | 1006067 | Wheel and Tire Assembly <i>(Two Required)</i> |
| 19 | 10101811 | E-Clip <i>(Four Required)</i> |
| 20 | 10ME122 | 1/2" NPT Male 2-Lug Coupling |
| 21 | 10L363 | 1/2" NPT Full Port Brass Ball Valve |
| 22 | 10L100129 | Moisture Separator <i>(Includes Item #'s: 4 and 7)</i> |
| 23 | 10LC24XP | Control Link Arm |
| — | 10L66EVD | Blastmaster® 153 Hose-End Shutoff |
| — | 10L66B | 1/2" NPT Nozzle Holder Base |
| — | 106M062 | Part Numbers and Schematics Guide – Marco® 1.5 Cu. Ft. L-Series Abrasive Blasting Pot |
| — | 1090062 | Operator's Manual – Marco® 1.5 Cu. Ft. L-Series Abrasive Blasting Pot |

Unsure which configuration you have? Compare Moisture Separator pipe string.

PART NUMBERS AND SCHEMATICS

Figure 1: Marco® 1.5 Cu. Ft. L-Series Abrasive Blasting Pot - *Units built after June 2024*



PART NUMBERS AND SCHEMATICS

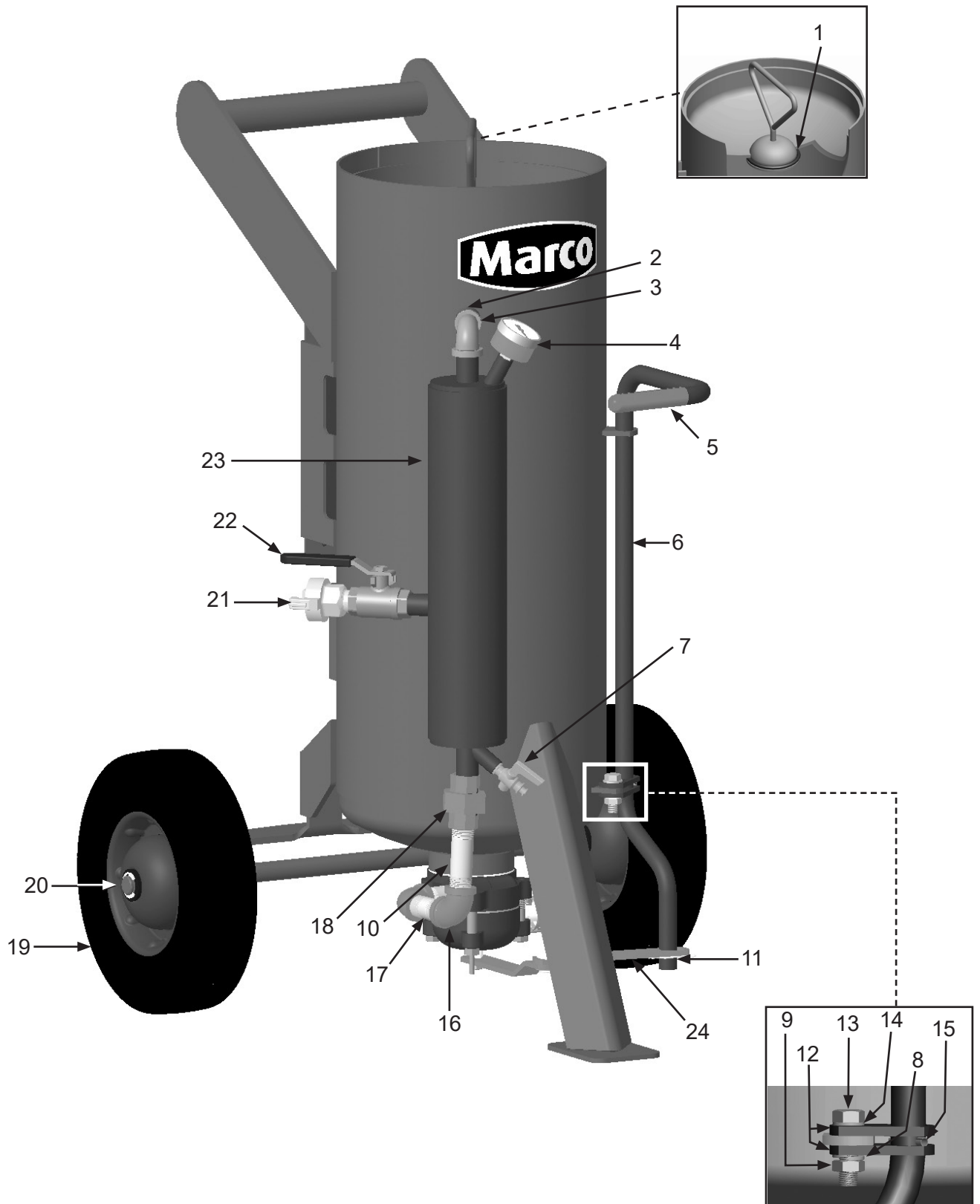
Marco® 1.5 Cu. Ft. L-Series Abrasive Blasting Pot - *Units built after April 2021*

| Item # | Part # | Description |
|---------------|------------|---|
| Fig. 1 | | |
| 1 | 10L650R | Filler Plug O-Ring |
| 2 | 1011209 | 3/8" NPT Close Nipple |
| 3 | 10L806058 | 1/2" NPT x 3/8" NPT 90° Reducing Elbow |
| 4 | 10L800719 | Pressure Gauge |
| 5 | 10L103LG | Control Lever Grip |
| 6 | 10L100268 | Control Lever (<i>Includes Item #'s: 5 and 1</i>) |
| 7 | 10L348 | 1/8" Petcock |
| 8 | 10L805015 | 3/8" Lock Washer |
| 9 | 10L804303 | 3/8-24 Hex Nut |
| 10 | 10L803042 | 1/2" NPT x 3" Nipple |
| 11 | 10L103H | Hair Spring Clip |
| 12 | 10L100058P | Control Lever Bracket (<i>Two Required</i>) |
| 13 | 10L805318 | 3/8-24 x 1-1/4" Bolt |
| 14 | 1014241 | 3/8" Flat Washer |
| 15 | 10L800085 | Roll Pin, 3/16" x 1" |
| 16 | 10L806004 | 1/2" NPT 90° Elbow (<i>Two Required</i>) |
| 17 | 10L803038 | 1/2" NPT x 2" Nipple (<i>Two Required</i>) |
| 18 | 10L806176 | 1/2" NPT Union |
| 19 | 1006067 | Wheel and Tire Assembly (<i>Two Required</i>) |
| 20 | 10101811 | E-Clip (<i>Four Required</i>) |
| 21 | 10ME122 | 1/2" NPT Male 2-Lug Coupling |
| 22 | 10L363 | 1/2" NPT Full Port Brass Ball Valve |
| 23 | 10L100129 | Moisture Separator (<i>Includes Item #'s: 4 and 7</i>) |
| 24 | 10LC24XP | Control Link Arm |
| — | 10L66EVD | Blastmaster® 153 Hose-End Shutoff |
| — | 10L66B | 1/2" NPT Nozzle Holder Base |
| — | 106M062 | Part Numbers and Schematics Guide – Marco® 1.5 Cu. Ft. L-Series Abrasive Blasting Pot |
| — | 1090062 | Operator's Manual – Marco® 1.5 Cu. Ft. L-Series Abrasive Blasting Pot |

Unsure which configuration you have? This version has a welded-on leg.

PART NUMBERS AND SCHEMATICS

Figure 1: Marco® 1.5 Cu. Ft. L-Series Abrasive Blasting Pot - *Units built after April 2021*



PART NUMBERS AND SCHEMATICS

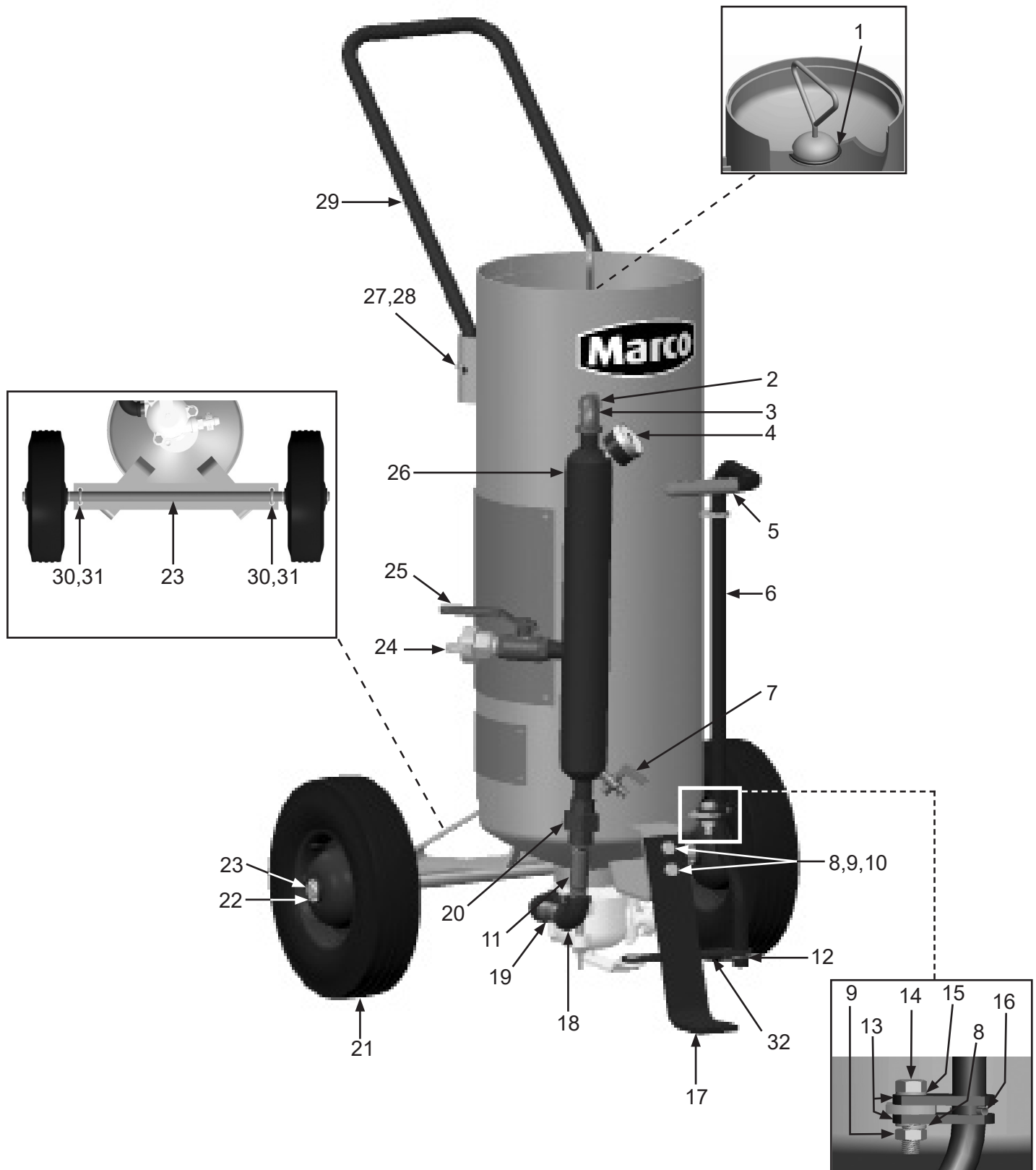
Marco® 1.5 Cu. Ft. L-Series Abrasive Blasting Pot - Units built before April 2021

| Item # | Part # | Description |
|---------------|------------|---|
| Fig. 1 | | |
| 1 | 10L650R | Filler Plug O-Ring |
| 2 | 1011209 | 3/8" NPT Close Nipple |
| 3 | 10L806058 | 1/2" NPT x 3/8" NPT 90° Reducing Elbow |
| 4 | 10L800719 | Pressure Gauge |
| 5 | 10L103LG | Control Lever Grip |
| 6 | 10L100268 | Control Lever (<i>Includes Item #'s: 5 and 16</i>) |
| 7 | 10L348 | 1/8" Petcock |
| 8 | 10L805015 | 3/8" Lock Washer (<i>Three Required</i>) |
| 9 | 10L804303 | 3/8-24 Hex Nut (<i>Three Required</i>) |
| 10 | 10L805317 | 3/8-24 x 1" Bolt (<i>Two Required</i>) |
| 11 | 10L803042 | 1/2" NPT x 3" Nipple |
| 12 | 10L103H | Hair Spring Clip |
| 13 | 10L100058P | Control Lever Bracket (<i>Two Required</i>) |
| 14 | 10L805318 | 3/8-24 x 1-1/4" Bolt |
| 15 | 1014241 | 3/8" Flat Washer |
| 16 | 10L800085 | Roll Pin, 3/16" x 1" |
| 17 | 10101868 | Spring Foot |
| 18 | 10L806004 | 1/2" NPT 90° Elbow (<i>Two Required</i>) |
| 19 | 10L803038 | 1/2" NPT x 2" Nipple |
| 20 | 10L806176 | 1/2" NPT Union |
| 21 | 1006067 | Wheel and Tire Assembly (<i>Two Required</i>) |
| 22 | 10101811 | E-Clip (<i>Four Required</i>) |
| 23 | 10101934 | Axle |
| 24 | 10ME122 | 1/2" NPT Male 2-Lug Coupling |
| 25 | 10L363 | 1/2" NPT Full Port Brass Ball Valve |
| 26 | 10L100129 | Moisture Separator (<i>Includes Item #'s: 4 and 7</i>) |
| 27 | 10L805312 | 5/16-24 x 3/4" Bolt (<i>Two Required</i>) |
| 28 | 10L805003 | 5/16" Flat Washer (<i>Two Required</i>) |
| 29 | 10L347 | Handle |
| 30 | 10101813 | 1/4-20 U-Bolt with Nuts (<i>Two Required</i>) |
| 31 | 1012153 | 1/4" Lock Washer (<i>Four Required</i>) |
| 32 | 10LC24XP | Control Link Arm |
| — | 10L66EVD | Blastmaster® 153 Hose-End Shutoff |
| — | 10L66B | 1/2" NPT Nozzle Holder Base |
| — | 106M062 | Part Numbers and Schematics Guide – Marco® 1.5 Cu. Ft. L-Series Abrasive Blasting Pot |
| — | 1090062 | Operator's Manual – Marco® 1.5 Cu. Ft. L-Series Abrasive Blasting Pot |

Unsure which configuration you have? This version has a bolt-on leg.

PART NUMBERS AND SCHEMATICS

Figure 1: Marco® 1.5 Cu. Ft. L-Series Abrasive Blasting Pot- Units built before April 2021



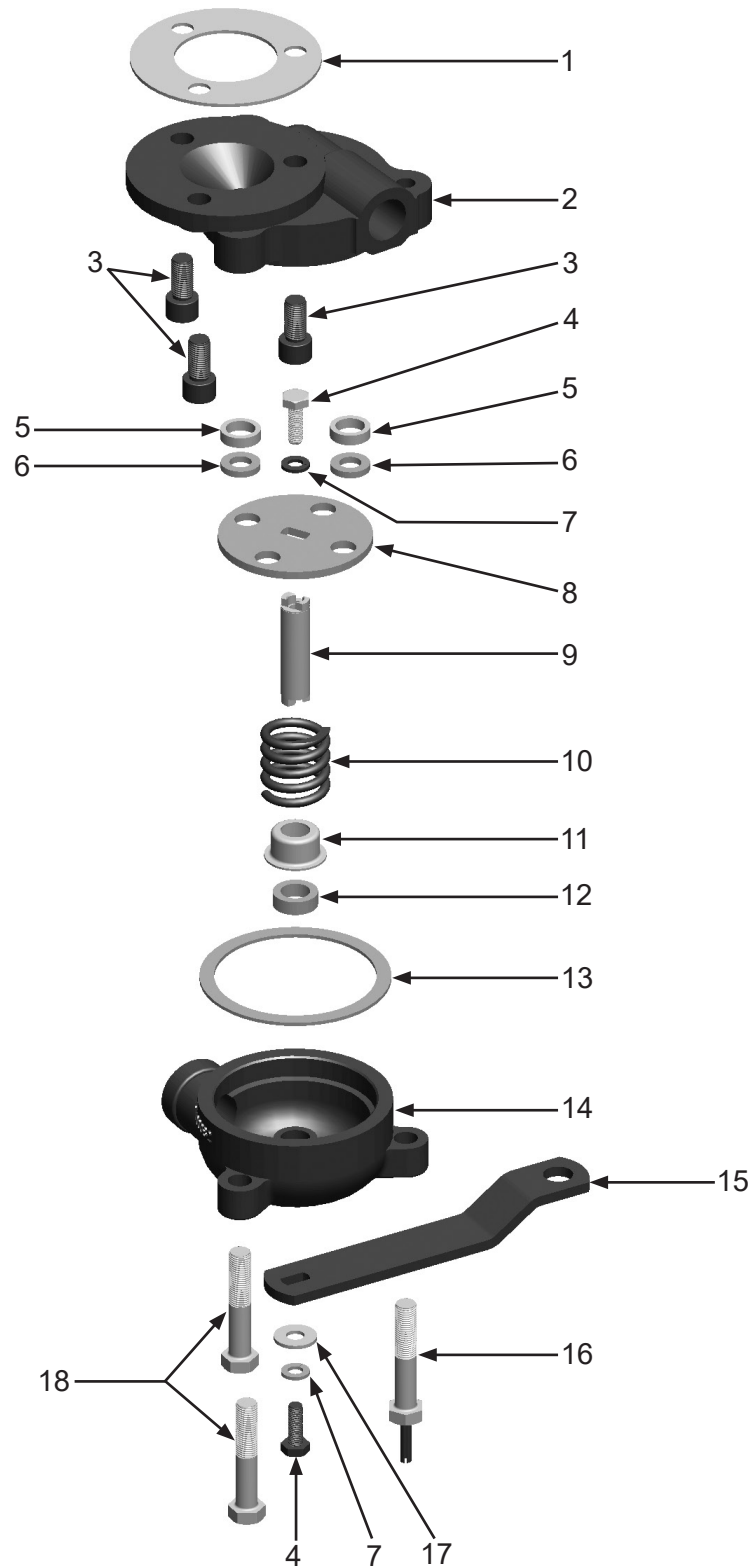
PART NUMBERS AND SCHEMATICS

Marco® 2-Hole Junior Abrasive Mixing Valve – Complete

| Item # | Part # | Description |
|---------------|------------------|---|
| Fig. 2 | | |
| — | 10L100197 | Marco® 2-Hole Junior Abrasive Mixing Valve – Complete |
| 1 | 10L301BG | Valve Body Gasket |
| 2 | 10L100009 | Valve Body <i>(Includes Item #3 (Quantity of Three))</i> |
| 3 | 10L805531 | Socket Head Cap Screw <i>(Three Required)</i> |
| 4 | 10L805302 | Spindle Bolt <i>(Two Required)</i> |
| 5 | 10LC25 | Valve Cushion <i>(Two Required)</i> |
| 6 | 10L100019 | Valve Washer <i>(Two Required)</i> |
| 7 | 1012153 | 1/4" Lock Washer <i>(Two Required)</i> |
| 8 | 10L100079 | Valve Plate |
| 9 | 10L100083 | Spindle |
| 10 | 10L344 | Valve Spring |
| 11 | 10LC31 | Spindle Packing |
| 12 | 10LC32 | Packing |
| 13 | 10LC16 | Cover Gasket |
| 14 | 10L100082 | Valve Cover - 1/2" NPT |
| 15 | 10LC4X | Valve Control Arm |
| 16 | 10L303CS | Stop Pin Bolt |
| 17 | 1014017 | 1/4" Flat Washer |
| 18 | 10L805319 | Cover Bolt |
| — | 10L336A | Marco® 2-Hole Junior Abrasive Mixing Valve Service Kit <i>Includes Item #'s: 1, 4 (Quantity of Two), 5 (Quantity of Two), 6 (Quantity of Two), 7 (Quantity of Two), 8, 9, 10, 11, 12, 13, 17</i> |
| — | 1091045 | Hazard Identification Tag |
| — | 106M431 | Part Numbers and Schematics Guide – Marco® 2-Hole Junior Abrasive Mixing Valve |
| — | 1090030 | Operator's Manual – Marco® 2-Hole Junior Abrasive Mixing Valve |

PART NUMBERS AND SCHEMATICS

Figure 2: Marco® 2-Hole Junior Abrasive Mixing Valve – Complete



OPTIONAL ACCESSORIES

Figure 3: Lid With Screen



| Item # | Part # | Description |
|---------------|----------|------------------------|
| Fig. 3 | | |
| 1 | 10101730 | 10" Lid |
| 2 | 1001510 | 10" Funnel with Screen |
| — | 10L161S | Screen for 10" Funnel |

Figure 4: Type I Ceramic Nozzles



| TYPE I CERAMIC NOZZLES | | | | | |
|------------------------|-------|--------------|--------------|----------------|--------------------|
| Part Numbers | Size | Orifice Size | Nozzle Entry | Overall Length | Abrasive Mesh Size |
| 10CN051 | 1 | 3/32" | 5/8" | 3-3/4" | 100 Mesh or Finer |
| 10CN251 | 2 | 1/8" | 5/8" | 3-3/4" | 60 Mesh or Finer |
| 10CN21251 | 2-1/2 | 5/32" | 5/8" | 3-3/4" | 50 Mesh or Finer |
| 10CN351 | 3 | 3/16" | 5/8" | 3-3/4" | 50 Mesh or Finer |
| 10CN451 | 4 | 1/4" | 5/8" | 3-3/4" | 40 Mesh or Finer |
| 10CN551 | 5 | 5/16" | 5/8" | 3-3/4" | 20 Mesh or Finer |
| 10CN651 | 6 | 3/8" | 5/8" | 3-3/4" | 12 Mesh or Finer |

OPTIONAL ACCESSORIES

Figure 5: Blast Hose and Accessories

| 1/2" I.D. ABRASIVE BLASTING HOSE | | | | | | |
|----------------------------------|---------|----------------------|------------------|-----------------|------------------|--------------|
| Part Numbers | O.D. | Fabric Reinforcement | Working Pressure | Liner Thickness | Hose Cover Color | Length (Ft.) |
| | | 2-Ply | | 1/4" Heavy-Duty | Black | |
| 10BH012B | 1-1/16" | X | 150 PSI | X | X | 50 |
| 10BH012E | 1-1/8" | X | 150 PSI | X | X | 50 |
| 10BH0122CR | 1-3/16" | X | 150 PSI | X | X | Per Foot |
| 10BH012C | 1-3/16" | X | 150 PSI | X | X | 50 |
| 10BH0124C | 1-3/16" | X | 150 PSI | X | X | 400 |

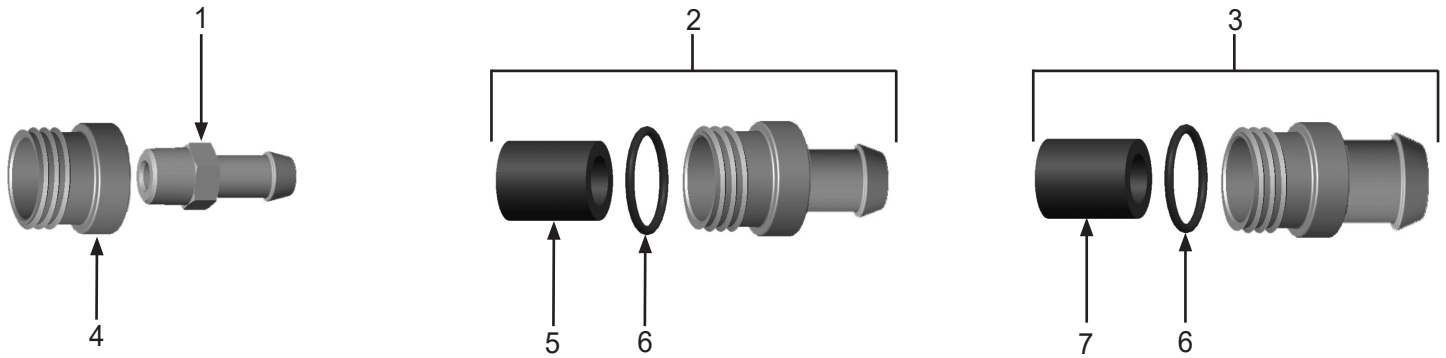
| Part Numbers | 1/2" I.D. ABRASIVE BLASTING HOSE WITH COUPLINGS INSTALLED | | | | | | | | | | | |
|--------------|---|--------------|----------------------|------------------|-----------------|------------------|--------------|-------------|-------|------|-------|-------|
| | I.D. | 1-3/16" O.D. | Fabric Reinforcement | Working Pressure | Liner Thickness | Hose Cover Color | Length (Ft.) | Coupling(s) | | | | |
| | | | 2-Ply | | 1/4" | Black | | Aluminum | Brass | Iron | Nylon | Steel |
| | | | | | | | | | | | | |
| 10L850119 | 1/2" | X | X | 150 PSI | X | X | 10 Ft. | | | | | X |
| 10L850125 | 1/2" | X | X | 150 PSI | X | X | 50 Ft. | | | | | X |
| 10L850120 | 1/2" | X | X | 150 PSI | X | X | 25 Ft. | | | | | X |
| 1081226 | 1/2" | X | X | 150 PSI | X | X | 25 Ft. | X | | | | |

| COUPLINGS FOR 1/2" I.D. ABRASIVE BLASTING HOSE | | | | | | |
|--|-----------|----------|------|----------------|----------|-------------|
| Part Numbers | Hose O.D. | Material | Lugs | GASKET OPTIONS | | |
| | | | | Rubber | Urethane | Gasket I.D. |
| 10QAL050 | 1-1/16" | Aluminum | 2 | 10SBG | 10USBG | 1-1/4" |
| 10EM505222 | 1-1/8" | Steel | 2 | 10SBG | 10USBG | 1-1/4" |
| 10QAL12 | 1-3/16" | Aluminum | 2 | 10SBG | 10USBG | 1-1/4" |

| NOZZLE HOLDERS FOR 1/2" I.D. ABRASIVE BLASTING HOSE | | | | |
|---|-----------|----------|--------------|---------------|
| Part Numbers | Hose O.D. | Material | Thread Style | Nozzle Washer |
| 10NHA050 | 1-1/16" | Aluminum | 3/4" | 10NW1 |
| 10EM505232 | 1-1/8" | Steel | 1" Male | — |
| 10NHA12 | 1-3/16" | Aluminum | 3/4" | 10NW1 |

OPTIONAL ACCESSORIES

Figure 6: Hose End Assemblies



| Item # | Part # | Description |
|---------------|-----------|---|
| Fig. 6 | | |
| 1 | 10L174 | Hose End for 1/2" I.D. Abrasive Blasting Hose |
| 2 | 10L366HE | Hose End for 3/4" I.D. Abrasive Blasting Hose (Includes Item #'s: 5 and 6) |
| 3 | 10L466HE | Hose End for 1" I.D. Abrasive Blasting Hose (Includes Item #'s: 6 and 7) |
| 4 | 10L66B | Nozzle Holder Base |
| 5 | 10L800236 | Rubber Liner for 3/4" I.D. Abrasive Blasting Hose |
| 6 | 10L66RR | O-Ring |
| 7 | 10L800237 | Rubber Liner for 1" I.D. Abrasive Blasting Hose |

MAINTENANCE NOTES

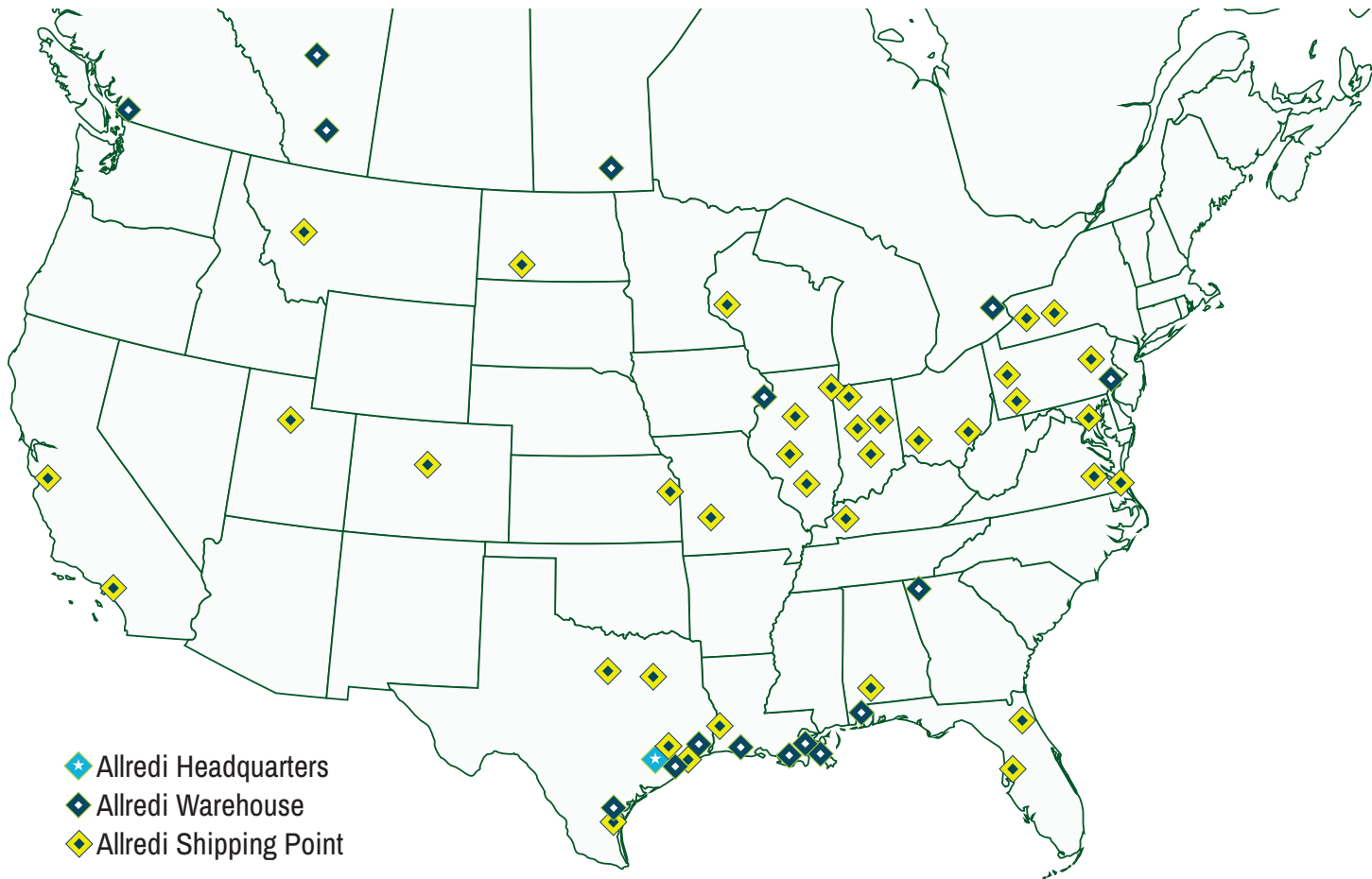
[illegible]

MAINTENANCE NOTES

[illegible]

MAINTENANCE NOTES

[illegible]



ALLREDI THERE

Serving these industries: Bridge, Pipeline, Tank & Tower, Concrete Services, Rail, Shipyard & Marine, Pools & Fountains, and Foundry

UNITED STATES

Pasadena, TX (*Headquarters*)
844.361.7038

Beaumont, TX
409.722.1284

Bristol, PA
215.826.8080

Corpus Christi, TX
361.887.2038

Davenport, IA
563.324.2519

Deer Park, TX
(*Service & Rental Location*)
281.930.0905

Duluth, GA
800.535.4564

Gonzales, LA
225.647.7575

Harvey, LA
504.367.8090

Houma, LA
985.580.4273

Lafayette, LA
337.267.1440

Theodore, AL
251.338.7525

CANADA

Calgary, Alberta
403.279.1924

Coquitlam, BC
604.464.6979

Edmonton, Alberta
780.468.2588 (Manus)
780.425.5510 (Mod-U-Blast)

Hamilton, Ontario
905.527.6000 / 888.794.5665

Mississauga, Ontario
905.890.5837

Winnipeg, Manitoba
204.256.3324

WWW.ALLREDI-US.COM / 800.252.7848

WWW.ALLREDI-CA.COM / 800.661.3842

Allredi™ and Marco® are registered trademarks of Allredi, LLC.
Mod-U-Blast® is a registered trademark of Allredi Blast & Abrasives Canada, Inc.
All other brand names or marks are used for identification purposes and are trademarks of their respective owners.

ALLREDI™

Literature #106M062_6/26/2024