



GRACO® XP70™ PLURAL COMPONENT SPRAYER



PART NUMBERS AND SCHEMATICS GUIDE

Company Profile

Since 1944, Marco has developed a strong tradition of providing innovative and reliable products and services to the surface preparation and protective coatings industries. We are the world's premier provider of Abrasives, Blasting Equipment, Coating and Painting Equipment, Engineered Systems, Rental Equipment, Safety Equipment, Service, and Repair.

Through innovative designs and a total commitment to quality, Marco manufactures products that increase production rates, create a safer workplace, and reduce maintenance costs. Marco's industry experience, manufacturing capabilities, legendary customer service, product availability, logistics services, and technology leadership is your assurance that we deliver high quality products and services, providing the best value to you, our customer.

The Marco Difference

- **Industry Experience** – With Marco on your team, you have access to expertise which can only come from decades of industry leadership. We have organized our engineering department, production specialists, customer operations, and safety support into a “Center of Competence.” As a Marco customer, you have access to hundreds of years of cumulative experience related to your operations.
- **Manufacturing Excellence** – Marco is a U.S. based, ISO 9001:2008 certified manufacturer of equipment for the Surface Preparation and Protective Coatings industries. Marco's engineers benchmark the industry to ensure that we design and manufacture superior products that set the “Gold Standard” for performance, safety, and quality.
- **Legendary Customer Service** – Marco's legendary customer service team is staffed by friendly, highly-trained individuals who are focused on providing the highest level of product support, order accuracy, and customer satisfaction.
- **Product Availability** – We stock over 10,000 SKU's and have over 45 shipping locations to serve North American and International markets for all major brands of blasting and painting equipment. As the largest provider of surface preparation and protective coatings equipment in the world, our inventory levels and product availability are unmatched.
- **Logistics Services** – Marco's in-house logistics team is dedicated to moving your shipment anywhere in the world. We move over 14,000 truckloads every year, allowing you to save on freight costs by leveraging our buying power. Lower your process costs with a single invoice, which includes product and freight.
- **Technology Leadership** – Our website provides: Operator's Manuals, Part Numbers and Schematics Guides, MSDS information, and Features, Advantages, and Benefits Guides, providing access to information 24/7. Our Extranet application allows you to receive quotes and place orders online. Our Intranet maintains a complete record of your purchase history to assist with ongoing support of your existing equipment and future purchasing decisions.

Vision Statement

Marco is the world's premier provider of Abrasives, Blasting Equipment, Coating and Painting Equipment, Engineered Systems, Rental Equipment, Safety Equipment, Service, and Repair.

Mission Statement

Marco provides strong leadership and innovation to the surface preparation and protective coatings industries. We dedicate our efforts to the continuous improvement of our products, services, processes, people, and most importantly, the quality of our customer's experience.

Quality Statement

Marco is committed to providing superior quality in the design, manufacturing, distribution, rental, service, and repair of our products. Our ISO 9001:2008 certification extends throughout all operations in all locations. Continuous improvement of our processes and supply chain Integration comprise the core of our business strategy for delivering exceptional quality and value in all Marco products and services.

Management Philosophy

We are a company dedicated to the success of every customer and associate. We discuss, debate, challenge, measure, and test our ideas. We will be boundless and limitless in our passion to improve. Through sound leadership and dedicated associates, we will ensure a long term, profitable future for Marco, our associates, customers, and suppliers.

TABLE OF CONTENTS

Company Profile	2
Table of Contents	3
Graco® XP70™ Sprayer	4-17
Graco® XP70™ Sprayer Part Numbers	4-5
Graco® XP70™ Sprayer – Cart Mount.	6-9
Bare Proportioning Pump Package	10-11
Air Controls	12
Fluid Manifold	13
Mix Manifold	14-15
NXT® Model 6500 Air Motor.	16-17
Optional Accessories	18-19
Manifold Valves	18
Pressure Monitor Kit	18
Static Mixers and Replacement Parts	19

PART NUMBERS AND SCHEMATICS GUIDE

GRACO® XP70™ PLURAL COMPONENT SPRAYER – CART MOUNT

Part Numbers	Graco® XP70™ Bare Sprayer	7 gal Hopper	Maximum Fluid Working Pressure	Pressure Ratio	Graco® XTR-7™ Spray Gun with RAC® 519 Tip	3/8" x 25' Hose	1/4" x 10' Whip Hose
20G571102	1:1	X	7250 psi	76:1	X	X	X
20G571101	1:1		7250 psi	76:1	X	X	X
20G571152	1.5:1	X	7250 psi	91:1	X	X	X
20G571151	1.5:1		7250 psi	91:1	X	X	X
20G571202	2:1	X	7250 psi	76:1	X	X	X
20G571201	2:1		7250 psi	76:1	X	X	X
20G571252	2.5:1	X	6500 psi	65:1	X	X	X
20G571251	2.5:1		6500 psi	65:1	X	X	X
20G571302	3:1	X	6800 psi	68:1	X	X	X
20G571301	3:1		6800 psi	68:1	X	X	X
20G571402	4:1	X	7250 psi	73:1	X	X	X
20G571401	4:1		7250 psi	73:1	X	X	X

GRACO® XP70™ PLURAL COMPONENT SPRAYER – BARE PUMP PACKAGES

Part Numbers	Graco® XP70™ Bare Sprayer	A Side Pump	B Side Pump	Combined Fluid Output	Pressure Ratio	Fluid Flow @ 40 cpm	Maximum Fluid Working Pressure
20G571100	1:1	20GL090C0	20GL090C0	180cc	72:1	1.9 gpm	7250 psi
20G571150	1.5:1	20GL085C0	20GL058C0	144cc	91:1	1.5 gpm	7250 psi
20G571200	2:1	20GL115C0	20GL058C0	174cc	76:1	1.8 gpm	7250 psi
20G571250	2.5:1	20GL14AC0	20GL058C0	203cc	65:1	2.1 gpm	6500 psi
20G571300	3:1	20GL14AC0	20GL048C0	193cc	68:1	2.0 gpm	6800 psi
20G571400	4:1	20GL14AC0	20GL036C0	181cc	73:1	1.9 gpm	7250 psi

PART NUMBERS AND SCHEMATICS GUIDE



(Cart Mount)



(Bare Pump Package)

PART NUMBERS AND SCHEMATICS GUIDE

Graco® XP70™ Plural Component Sprayer – Cart Mount

Item#	Part#	Description
Fig. 1		
—	—	Graco® XP70™ Plural Component Sprayer – Cart Mount
1	20G258913	Cart
2	20G262476	Vertical Axle
3	20G111841	5/8" Flat Washer (<i>Quantity of Two</i>)
5	20G100133	3/8" Lock Washer (<i>Quantity of Seven</i>)
7	20G113362	Wheel (<i>Quantity of Two</i>)
8	20G154628	3/4" Washer (<i>Quantity of Two</i>)
9	20G113436	Retaining Ring (<i>Quantity of Two</i>)
10	20G124410	Sleeve Bearing 1 x 1-1/4 x 1-1/2
11	20G124664	Thrust Washer (<i>Quantity of Two</i>)
12	20G262477	Axle
13	20G191824	Space Washer (<i>Quantity of Four</i>)
14	20G113807	Free Flat Wheel – Urethane (<i>Quantity of Two</i>)
15	20G258982	Cart Handle
16	20G101242	Retaining Ring (<i>Quantity of Two</i>)
17	20G258983	Air Controls (<i>See Fig. 4</i>)
18	20G100131	3/8-16 Full Hex Nut (<i>Quantity of Seven with Hopper, Quantity of Three Without Hopper</i>)
38	20G108063	Grip Handle
50	20G100333	1/4 x 1/2 Screw, Hex HD (<i>Quantity of Four</i>)
52	20G124293	3/8-16 U-Bolt, 1" Diameter
53	20G124259	Plunger Clamp Brake
54	20G124291	Spring Pin (<i>Quantity of Two</i>)
64	20G113498	Air Relief Valve, 110 psi
—	20G116643	Air Relief Valve, 90 psi (<i>For models 20G571151 and 20G571152 only</i>)
—	20G114958	Tie Strap (<i>Quantity of Two</i>)
—	201V544	Brochure – Graco® Plural Component Sprayers
—	206M573	Part Numbers and Schematics Guide – Graco® XP70™ Plural Component Sprayer
—	209V573	Operator's Manual – Graco® XP70™ Plural Component Sprayer

Figure 1: Graco® XP70™ Plural Component Sprayer – Cart Mount



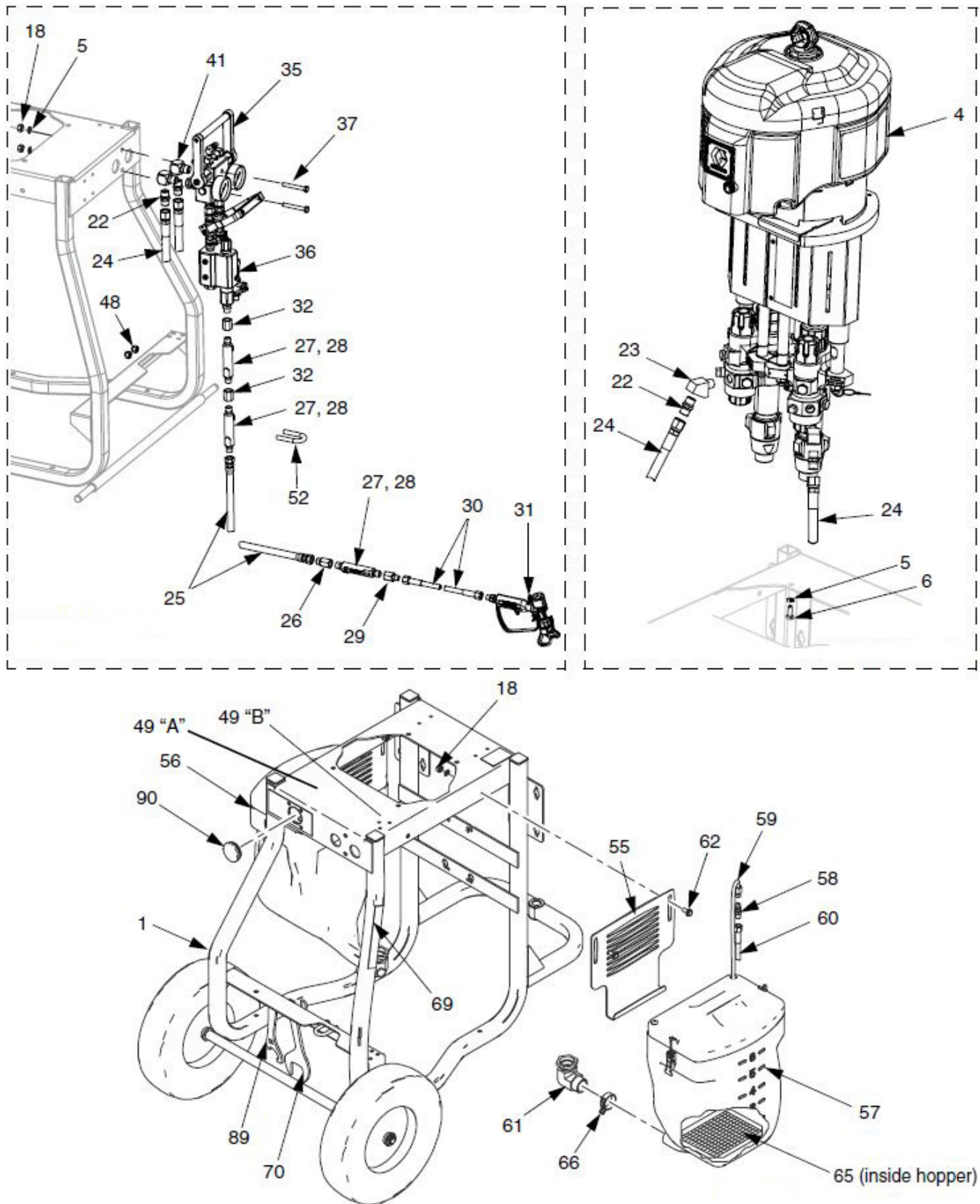
PART NUMBERS AND SCHEMATICS GUIDE

Graco® XP70™ Plural Component Sprayer – Cart Mount Continued

Item#	Part#	Description	Item#	Part#	Description
Fig. 2			56	20G262479	Blue Hopper – 7 gal (Hopper Included)
—	—	Graco® XP70™ Plural Component Sprayer – Cart Mount	57	20G262480	Green Hopper – 7 gal (Hopper Included)
1	20G258913	Cart	58	20G116704	Adapter – 1/4" NPT x 9/16-18 JIC (Quantity of Two)
4	—	Pump Package (See Fig. 3)	59	20G262481	Recirculated Tube Kit (Quantity of Two)
5	20G100133	3/8" Lock Washer (Quantity of Seven)	60	2000034	1/4" x 6' Coupled Hose, 6100 psi, with Hopper (Quantity of Two)
6	20G100101	3/8-16 x 1" Long Screw (Quantity of Four)	—	20GH2510	1/4" x 10' Coupled Hose, 6100 psi, without Hopper (Quantity of Two)
—	20G111218	Cap (Quantity of Four)	61	20G16D376	1-1/4" Swivel Fitting with Plug (Hopper Included) (Quantity of Two)
18	20G100131	3/8-16 Full Hex Nut (Quantity of 7 with Hopper, Quantity of 3 without Hopper)	62	20G111192	3/8-16 Bolt (Hopper Included) (Quantity of Four)
22	20G158491	1/2" x 1/2" Nipple Fitting (Quantity of Four)	65	20G16791	Strainer (Hopper Included)
23	20G15M987	1/2" NPT (M) x 1/2" NPT (F) Elbow (Quantity of Two)	66	20G124450	Constant Tension Clamp Spring (Hopper Included)
24	20GH75003	1/2" x 3' Coupled Hose, 7250 psi (Quantity of Two)	—	20G114958	Tie Strap (Quantity of Two)
25	20GH73825	3/8" x 25' Coupled Hose, 7250 psi	69	20G15U654	Label, Warning
26	20G15B729	3/8" NPT (F) x 3/8" NPSM (M) Adapter	70	20G16F615	Wrench Tool
27	20G262478	Static Housing Mixer 1/2" x 5"	89	20G16G819	Filter Cap Wrench
28	20G248927	Static Mixer Element, Pack of 25	90	20G16J688	Hole Gauge Plug
29	20G150287	Reducing Coupling 3/8" to 1/4"	—	20G15T468	Label, Warning (Hopper Included) (Quantity of Two)
30	20GH72510	1/4" x 10' Coupled Hose, 7250 psi	—	201V019	Brochure – Graco® XTR™ Airless Spray Guns
31	20GXTR704	Graco® XTR-7™ 4-Finger Spray Gun with RAC® 519 Tip	—	206M511	Part Numbers and Schematics Guide – Graco® XTR-7™ Airless Spray Gun
32	20G162024	Coupling 3/8" (Quantity of Two)	—	206M573	Part Numbers and Schematics Guide – Graco® XP70™ Plural Component Sprayer
—	20G552069	Label, Metalized	—	209V573	Operator's Manual – Graco® XP70™ Plural Component Sprayer
35	20G262806	Fluid Manifold (See Fig. 5)	—	312145D	Operator's Manual – Graco® XTR-7™ Airless Spray Gun
36	20G262807	Mix Manifold (See Fig. 6)			
37	20G106212	3/8-16 x 2-1/2 Screw Cap, Hex HD (Quantity of Two)			
41	20G158683	90° 1/2" Elbow Fitting (Quantity of Two)			
—	20G206995	Throat Seal Liquid – 1 qt.			
48	20G101566	Lock Nut 3/8-16 (Quantity of Two)			
49	20G15U654	Label, A and B, Set of Four			
52	20G124293	3/8-16 U-Bolt, 1" Diameter			
55	20G24E872	Hopper Bracket (Hopper Included) (Quantity of Two)			

PART NUMBERS AND SCHEMATICS GUIDE

Figure 2: Graco® XP70™ Plural Component Sprayer – Cart Mount Continued



PART NUMBERS AND SCHEMATICS GUIDE

Bare Proportioning Pump Package – Varying Parts

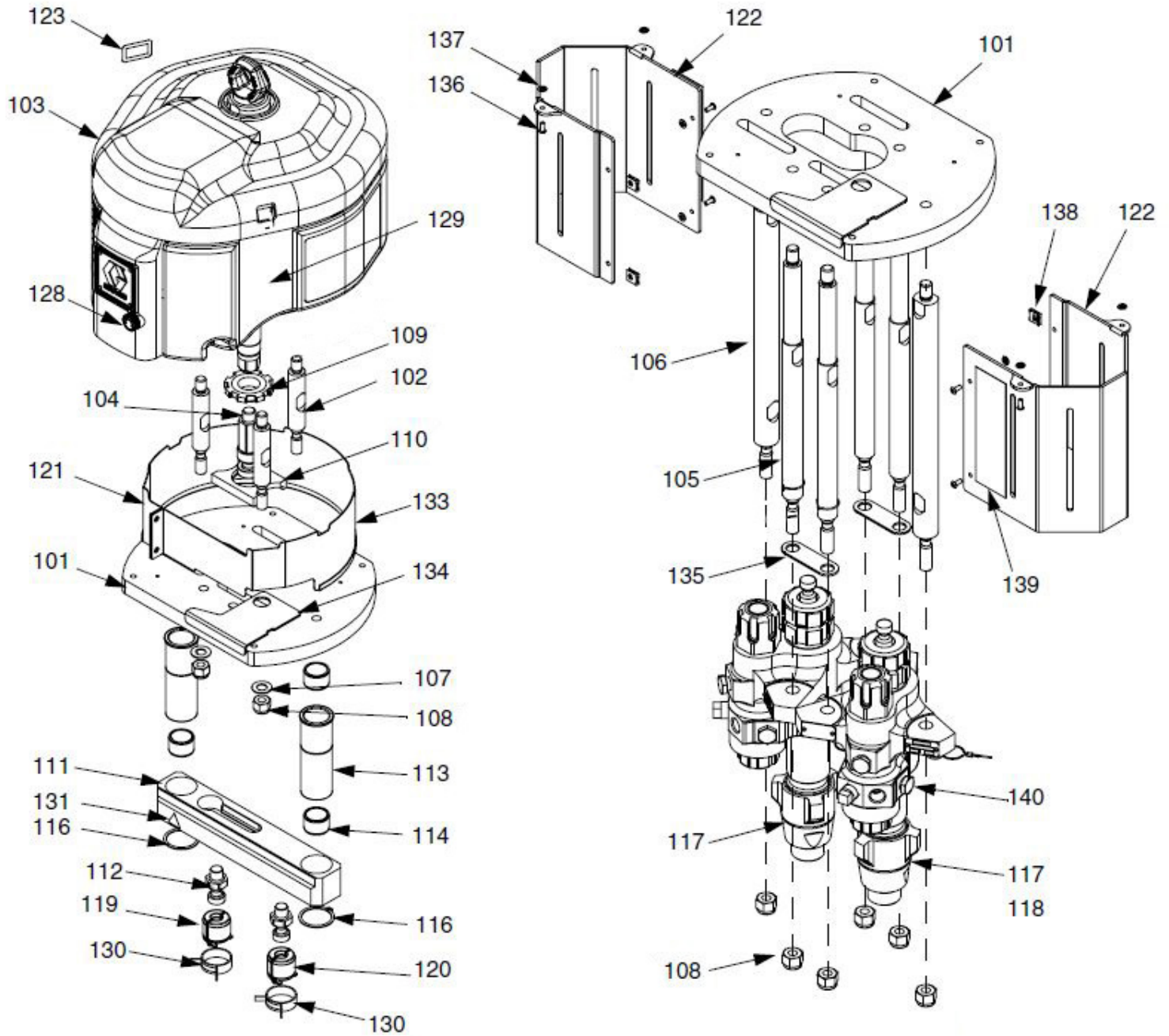
Item#	Description	20G571100	20G571150	20G571200	20G571250	20G571300	20G571400
Fig. 3							
117	A-Side Pump	20GL085C0	20GL085C0	20GL115C0	20GL14AC0	20GL14AC0	20GL14AC0
118	B-Side Pump	20GL085C0	20GL058C0	20GL058C0	20GL058C0	20GL048C0	20GL036C0
119	A-Side Coupler	20G247167	20G247167	20G247167	20G244819	20G244819	20G244819
120	B-Side Coupler	20G247167	20G247167	20G247167	20G247167	20G247167	20G247167
140	B-Side Rupture Disc	—	20G258962	20G258962	20G258962	20G258962	20G258962

Graco® XP70™ Plural Component Sprayer – Bare Proportioning Pump Package

Item#	Part#	Description
Fig. 3		
—	—	Bare Proportioning Pump Package (See Page 4)
101	20G262465	Motor Plate
102	20G262466	Rod Tie, 4" x 1" (<i>Quantity of Three</i>)
103	20GN65DN0	NXT® Air Motor 6500 (<i>See Fig. 7</i>)
104	20G262467	Rod Adapter
105	20G262468	Rod Tie, 14-1/4" with Shoulder (<i>Quantity of Four</i>)
106	20G262469	Rod Tie, 14-1/4" x 1-1/4" (<i>Quantity of Two</i>)
107	20G154636	Flat Washer 5/8" (<i>Quantity of Three</i>)
108	20G101712	Lock Nut with Nylon Inserts 5/8-11 (<i>Quantity of Nine</i>)
109	20G16D451	Yoke Nut
110	20G262470	Ratio Indicator Bracket
111	20G262471	Yoke Pump Assembly
112	20G15H392	Rod Adapter (<i>Quantity of Two</i>)
113	20G262472	Sleeve with Bearing (<i>Quantity of Two</i>)
114	20G15C244	Bearing Sleeve (<i>Quantity of Four</i>)
116	20G123976	External Snap Ring (<i>Quantity of Two</i>)
121	20G262473	Motor Rod Cover
122	20G262474	Pump Cover (<i>Quantity of Two</i>)
123	—	Label, Identification
128	20GNXT102	De-Ice Knob, Pack of Five
129	20G16D029	Label, XP70™
130	20G124078	Constant Tension Clamp Spring (<i>Quantity of Two</i>)
131	20G15H108	Label, Pinch Point
133	20G114225	Edge Protection Trim (<i>Quantity of Two</i>)
134	20G262475	Ratio Indicator Bracket
135	20G16E882	Lowers Strap (<i>Quantity of Two</i>)
136	—	Screw, Cap, Button HD (<i>Quantity of Eight</i>)
137	—	Washer, Retaining, Nylon (<i>Quantity of Eight</i>)
138	20G124665	Captive Nut (<i>Quantity of Four</i>)
139	20G15T468	Label, Warning (<i>Quantity of Two</i>)
141	20G206995	Throat Seal Liquid – 1 qt.
142	20G244524	Ground Wire Assembly with Clamp

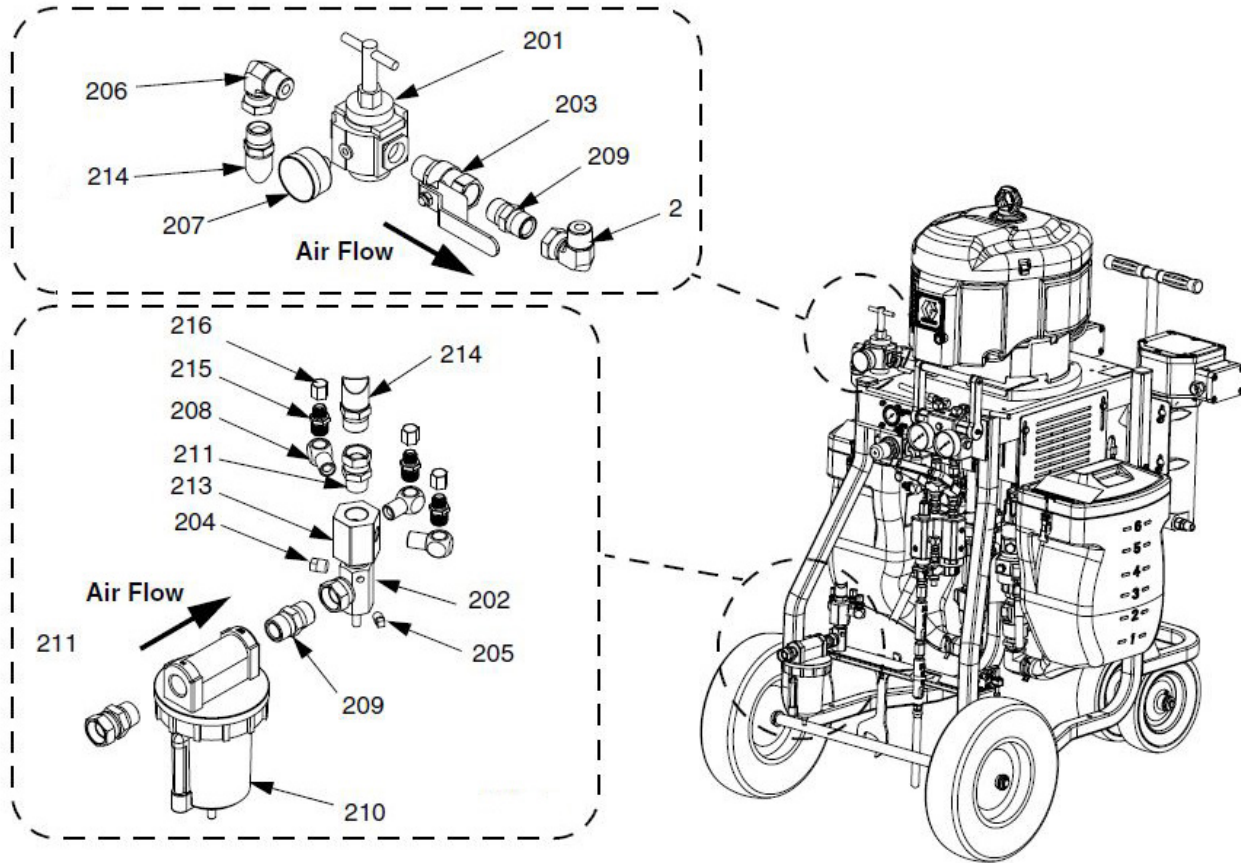
PART NUMBERS AND SCHEMATICS GUIDE

Figure 3: Graco® XP70™ Plural Component Sprayer – Bare Proportioning Pump Package



PART NUMBERS AND SCHEMATICS GUIDE

Figure 4: Air Controls



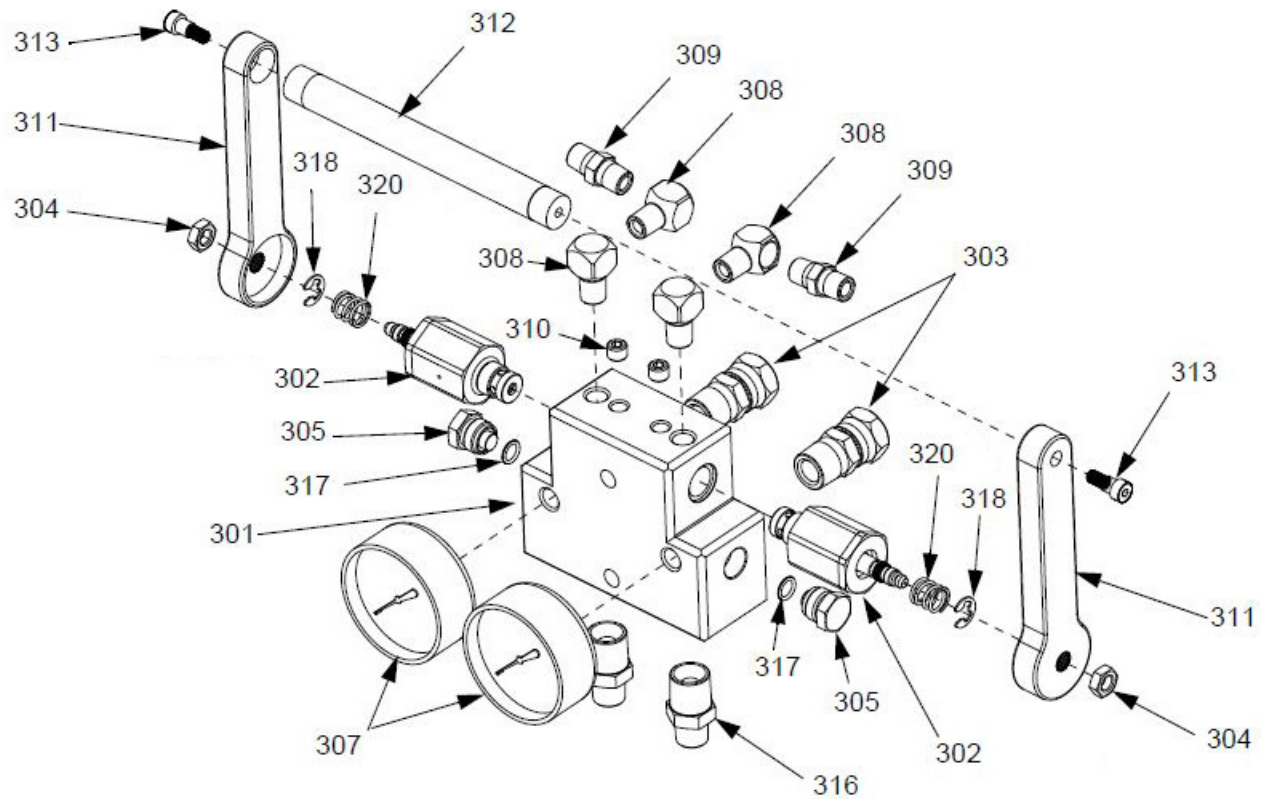
Item#	Part#	Description
-------	-------	-------------

Fig. 4

—	20G258983	Air Controls
201	20G16F014	T-Handle Air Regulator
202	20G207675	Air Manifold
203	20G113218	3/4" Ball Valve Vented M x F
204	20G100509	Pipe Plug – 1/4" Square Head
205	20G100403	Pipe Plug – 1/8" – NPTF
206	20G160327	90° Union Swivel, 3/4" x 3/4" (<i>Quantity of Two</i>)
207	20G101689	Air Gauge
208	20G155699	3/8" 90° Elbow (<i>Quantity of Three</i>)
209	20G119992	3/4" x 3/4" NPT Pipe Nipple Fitting (<i>Quantity of Two</i>)
210	20G117628	Filter Air 3/4" Auto Drain
—	20G106204	Filter Element
211	20G157785	Union Swivel, 3/4" x 3/4", Carbon Steel (<i>Quantity of Two</i>)
213	20G15E145	Air Distribution Manifold
214	20G16E004	Coupled Air Hose – 26" Section
215	20G157350	1/4" NPT x 3/8" NPT Nipple, 5000 psi (<i>Quantity of Three</i>)
216	20G115781	1/4" NPT Cap Plug (<i>Quantity of Three</i>)

PART NUMBERS AND SCHEMATICS GUIDE

Figure 5: Fluid Manifold



Item#	Part#	Description
-------	-------	-------------

Fig. 5

—	20G262806	Fluid Manifold
301	20G16D693	Recirculation Manifold Block
302	20G262520	Recirculation/Over Pressurization Valve (<i>Quantity of Two</i>)
303	20G156684	1/2" Union M x F (<i>Quantity of Two</i>)
304	20G112309	Jam Hex Nut (<i>Quantity of Two</i>)
305	20G198241	Pressure Port Plug, 11/16-24 (<i>Quantity of Two</i>)
306	20G156173	Union Swivel – 3/8" NPTF x 3/8" NPSF (<i>Quantity of Two</i>)
307	20G114434	1/4" Pressure Gauge, 10000 psi (<i>Quantity of Two</i>)
308	20G100840	1/4-18 NPT Elbow (<i>Quantity of Four</i>)
309	20G156971	1/4" x 1/4" Nipple (<i>Quantity of Two</i>)
310	20G557349	1/8" NPT Dry Seal Plug (<i>Quantity of Two</i>)
311	20G16E334	Manifold Handle (<i>Quantity of Two</i>)
312	20G16E332	Connecting Rod Handle
313	20G124859	1/4-20 x 5/16" Shoulder Bolt (<i>Quantity of Two</i>)
316	20G156684	1/2" x 1/2" Nipple (<i>Quantity of Two</i>)
317	20G121399	O-Ring Solvent Resistant (<i>Quantity of Two</i>)
318	20G124676	External Snap Ring (<i>Quantity of Two</i>)
320	20G150829	Spring for Swivel (<i>Quantity of Two</i>)
—	20G159239	3/8" x 1/2" Nipple (<i>Quantity of Two</i>)
—	20G156173	3/8" x 3/8" Swivel (<i>Quantity of Two</i>)

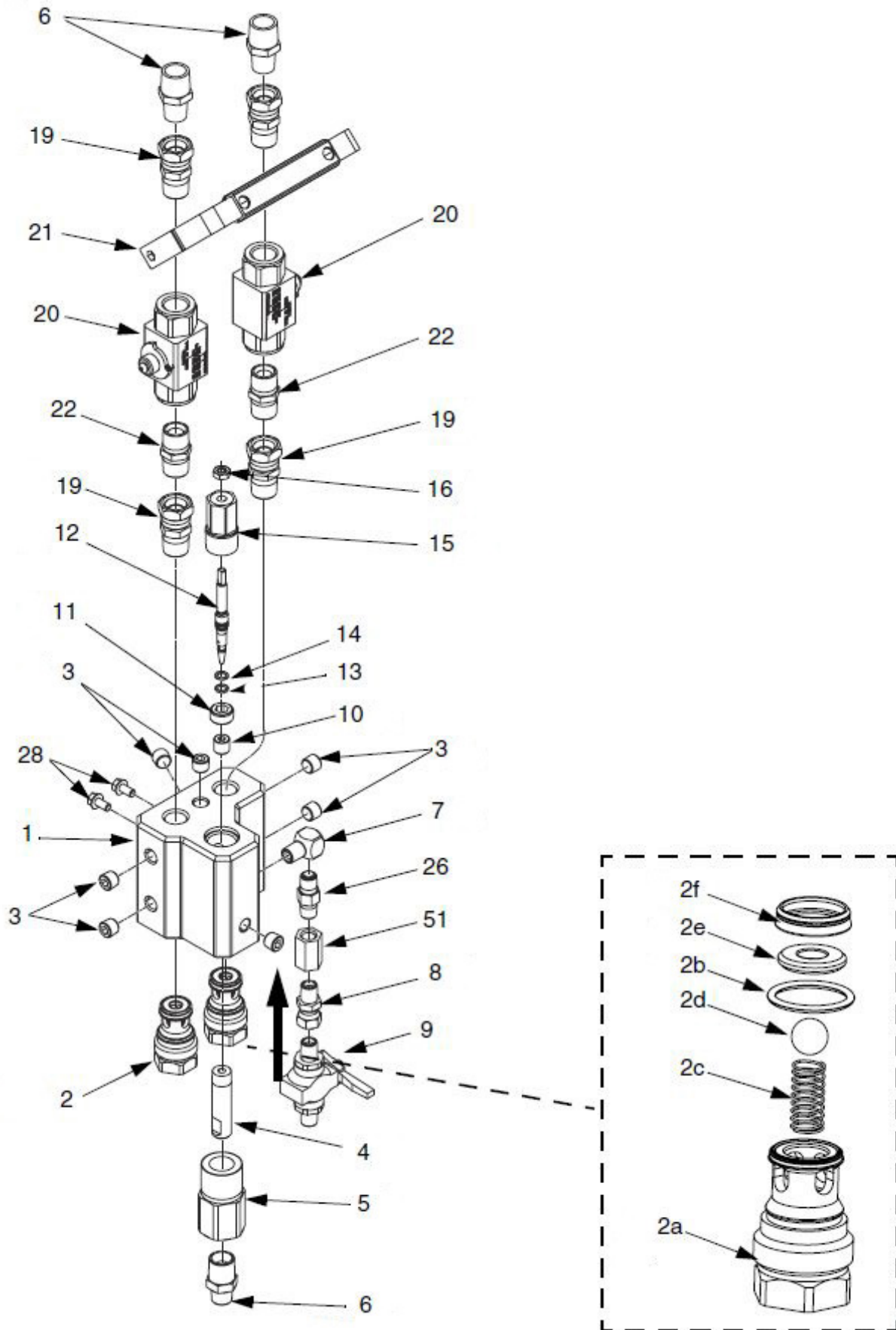
PART NUMBERS AND SCHEMATICS GUIDE

Mix Manifold

Item#	Part#	Description
Fig. 6		
—	20G262807	Mix Manifold
1	20G24P869	Mix Manifold Block
2	20G258986	Check Valve Cartridge <i>(Includes Item #'s: 2a, 2b, 2c, 2d, 2e, and 2f) (Quantity of Two)</i>
2a	20G16D614	Check Valve Housing
2b	20G121138	Packing O-Ring, PTFE, White
2c	20G15M530	Check Valve Spring
2d	20G116166	1/2" Carbide Ball
2e	20G15A968	Foot Valve Seat
2f	20G15K692	Retainer Seat
3	20G100721	1/4" NPT Pipe Plug <i>(Quantity of Seven)</i>
4	20G15R378	Hardener Injector Tube
5	20G15R067	Pipe Outlet
6	20G159239	3/8" x 1/2" Pipe Nipple <i>(Quantity of Three)</i>
7	20G100840	1/4-18 NPT Elbow
8	20G156823	1/4" NPT (M) x 1/4" NPSM (F) Adapter
9	20G214037	1/4" x 1/4" Ball Valve, 5000 psi
10	20G183951	Seat Valve for Restrictor
11	20G15R382	3/4-16 UNC x 0.375 Retainer Screw
12	20G235205	Restrictor Valve Stem
13	20G110004	Packing O-Ring, PTFE, White
14	20G113137	Packing O-Ring, Solvent Resistant, Black
15	20G15M969	Restrictor Housing
16	20G110005	Hex Nut Jam
19	20G156684	1/2" NPT Union Swivel <i>(Quantity of Four)</i>
20	20G262740	1/2" NPT (F) Ball Valve <i>(Quantity of Two)</i>
21	20G24M421	Valve Lever
22	20G158491	1/2" x 1/2" Nipple <i>(Quantity of Two)</i>
26	20G501867	1/4" Stainless Steel Check Valve
28	20G113161	1/4-20 x 1/2" Screw <i>(Quantity of Two)</i>
51	20G113093	1/2" x 1/2" Coupling, 7250 psi
—	20G126786	Restrictor Wrench
—	20G258992	Mix Manifold Repair Kit <i>(Includes Item #'s: 2b, 2c, 2d, 2e, 2f, 13, and 14)</i>
—	209V505	Operator's Manual – Graco® Mix Manifold

PART NUMBERS AND SCHEMATICS GUIDE

Figure 6: Mix Manifold



PART NUMBERS AND SCHEMATICS GUIDE

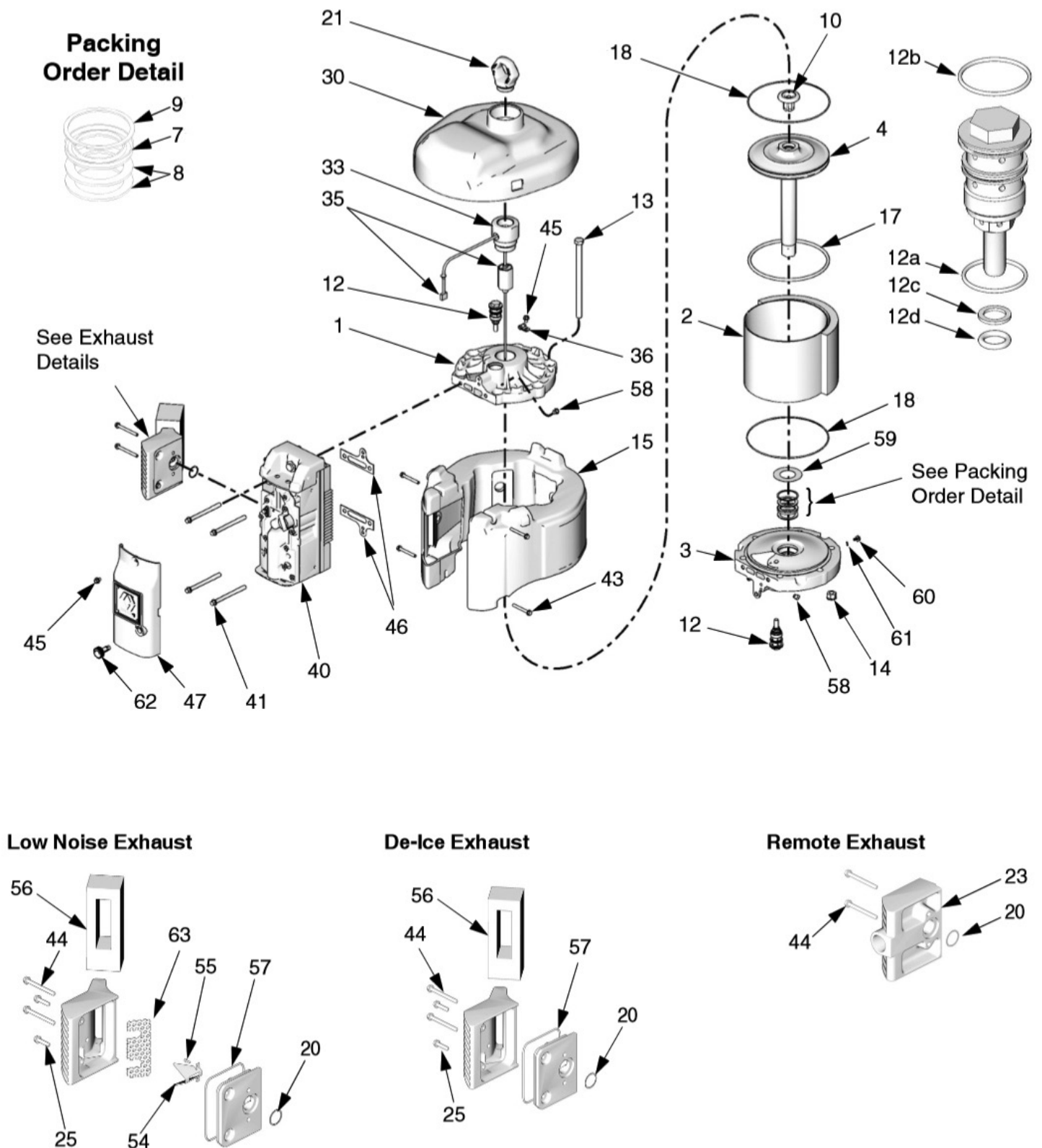
NXT® Model 6500 Air Motor and Exhaust

Item#	Part#	Description
Fig. 7		
—	20GN65DN0	NXT® Model 6500 De-Icing Air Motor
—	20GN65DH0	NXT® Model 6500 De-Icing Air Motor with Sensor
—	20GN65LN0	NXT® Model 6500 Low Noise Motor
1	20G15F953	Top Cover
2	20GNXT604	Cylinder
3	20GNXT602	Bottom Cover
4	20GNXT601	Piston Assembly
7	20G161562	Packing, V-block; Nitrile
8	20G15H610	Packing, Backup; Leather (Quantity of Two)
9	20G16A026	Retaining Ring
10	20GNXT106	Piston Bumper, includes Magnet
12	20GNXT100	Poppet (Quantity of Two) (Includes Item #'s: 12a-12d)
12a	—	O-Ring, buna-N
12b	20GNXT101	O-Ring, buna-N
12c	20GNXT101	O-Ring, Backup, buna-N
12d	—	O-Ring, buna-N
13	20G119050	1/2-13 x 8" Hex Head Bolt, (203 mm) (Quantity of Six)
14	20G15F639	1/2-13 Nut with Lock Washer (Quantity of Six)
15	20GNXT603	Muffler
17	20G122675	Piston O-Ring, Nitrile
18	20G15F448	End Cap O-Ring, Nitrile (Quantity of Two)
20	20G119990	O-Ring, buna-N
21	20G15F931	Lift Ring
22	20GNXT110	De-Ice Exhaust Kit (Includes Item #'s: 20, 25, 44, 56, and 57)
23	20GNXT105	Remote Exhaust Kit (Includes items 20, 44)
24	20GNXT104	Low Noise Exhaust Kit (Includes item #'s: 20, 22, 25, 44, 54, 55, 56, and 57)




Item#	Part#	Description
25	20G120730	1/4-20 x 1" Machine Screw, Hex Head, (25 mm) (Quantity of Two)
41	20G120088	3/8-16 x 4" Screw (101 mm) (Quantity of Four)
43	20G120091	1/4-20 x 2" Screw, Thread Forming, (51 mm) (Quantity of Four)
44	20G120092	1/4-20 x 2-1/2" Thread Forming Screw, (63 mm) (Quantity of Two)
46	20G253476	Gasket
47	20G287844	Valve Cover, Outer
51	20G15F674	Safety Label
52	20G15F973	Safety Label
54	20G15H179	Deflector
55	20G107257	1/4-20 x 1/2" Thread Forming Screw, (13 mm) (Quantity of Two)
56	20G15H190	Exhaust Seal
57	20G15K345	Gasket, buna-N
58	20G120206	Poppet Muffler (Quantity of Two)
59	20G277366	Bumper
60	20G116343	Ground Screw, M5 x 0.8
61	20G111307	Lock Washer, 5 mm
62	20GNXT112	De-Ice Knob
63	20G15G689	Exhaust Diffuser
—	20GNXT600	Repair Kit NXT® 6500 Air Motor (Includes Item #'s: 7, 8, 9, 17, 18, and 46)
—	209V509	Operator's Manual – Graco® NXT® Air Motor


PART NUMBERS AND SCHEMATICS GUIDE

Figure 7: NXT® Model 6500 Air Motor and Exhaust





OPTIONAL ACCESSORIES

		MANIFOLD VALVES			
		Type	Maximum Working Pressure	Thread Size	Seals
	20G262740	Spare Valve (No Handle)	7250 psi	1/2" NPT	PTFE with PEEK seat
	20G262739	Spare Valve (Single Handle)	7250 psi	1/2" NPT	PTFE with PEEK seat
<i>No Image Available</i>	20G24M601	Ball Valve Repair Kit			
	20G262520	Recirculation/Over Pressurization Valve			

		PRESSURE MONITOR KIT	
		Description	
	20G262940	XP70™ Pressure Monitor Kit, Electric	
	20G262942	XP70™ Pressure Monitor Kit, Pneumatic	

OPTIONAL ACCESSORIES

		STATIC MIXERS				
Part Numbers		Diameter	Length	Pressure Limit	Housing Material	Element Material
	20TAH100206	1/4"	3.75"	8500 psi	Stainless Steel	Stainless Steel
	20TAH100212	1/4"	7"	8500 psi	Stainless Steel	Stainless Steel
	20G511352	3/8"	9.5"	7250 psi	Stainless Steel	Stainless Steel
	20TAH100312	3/8"	9.5"	7250 psi	Stainless Steel	Stainless Steel
	20TAH7700195	3/8"	13.12"	7250 psi	Stainless Steel	Plastic
	2070039	1/2"	2"	5000 psi	Plastic	Plastic
	20TAH100412	1/2"	11"	7250 psi	Stainless Steel	Stainless Steel

		STATIC MIXER REPLACEMENT PARTS	
Part Numbers		Description	Quantity
	20G248925	1/4" x 12 Ft. Whip Hose Mixing Kit	20G15E592 Housings (<i>Quantity of Two</i>) and 20G248927 Mixing Elements (<i>Quantity of Six</i>)
	20TAH090312	3/8" x 12" Stainless Steel Mixing Element	12/Package
	20G248927	1/2" Plastic Mixing Element	25/Package
	20G15E592	1/2" x 5" Static Mix Housing	One Each
	20TAH100612	3/4" x 12" Stainless Steel Mixing Element	12/Package

GLOBAL HEADQUARTERS

- 3425 East Locust Street
Davenport, IA 52803

ph: 800.BLAST.IT (800.252.7848)

ph: 563.324.2519

fax: 563.324.6258

GULF STATES HEADQUARTERS

- 701 East Boulevard
Deer Park, TX 77536

ph: 800.BLAST.IT (800.252.7848)

ph: 281.930.0905

fax: 281.542.0736

REGIONAL BRANCH OFFICES

- **Iowa**
Davenport
- **Louisiana**
Gonzales
Lafayette
- **Ohio**
Youngstown
- **Texas**
Beaumont
Corpus Christi
Deer Park



ABRASIVES

BLASTING

COATING

DUST COLLECTORS

ENGINEERED SYSTEMS

RENTAL

SAFETY

SERVICE & REPAIR

VACUUMS

40+ NATIONWIDE SHIPPING LOCATIONS



★ Marco Regional Branch Offices
and Shipping Locations

● Direct Shipping Locations

CONTACT MARCO

800.BLAST.IT

(800.252.7848)

563.324.2519

FAX: 563.324.6258

WWW.MARCO.US

SALES@MARCO.US