



GRACO® KING® 56:1 AIRLESS SPRAY PUMP



PART NUMBERS AND SCHEMATICS GUIDE

Company Profile

Since 1944, Marco has developed a strong tradition of providing innovative and reliable products and services to the surface preparation and protective coatings industries. We are the world's premier provider of Abrasives, Blasting Equipment, Coating Equipment, Engineered Systems, Rental Equipment, Safety Equipment, Service, and Repair.

Through innovative designs and a total commitment to quality, Marco manufactures products that increase production rates, create a safer workplace, and reduce maintenance costs. Marco's industry experience, manufacturing capabilities, legendary customer service, product availability, logistics services, and technology leadership is your assurance that we deliver high quality products and services, providing the best value to you, our customer.

The Marco Difference

- **Industry Experience** – With Marco on your team, you have access to expertise which can only come from decades of industry leadership. We have organized our engineering department, production specialists, customer operations, and safety support into a “Center of Competence.” As a Marco customer, you have access to hundreds of years of cumulative experience related to your operations.
- **Manufacturing Excellence** – Marco is a U.S. based, ISO 9001:2008 certified manufacturer of equipment for the Surface Preparation and Protective Coatings industries. Marco's engineers benchmark the industry to ensure that we design and manufacture superior products that set the “Gold Standard” for performance, safety, and quality.
- **Legendary Customer Service** – Marco's legendary customer service team is staffed by friendly, highly-trained individuals who are focused on providing the highest level of product support, order accuracy, and customer satisfaction.
- **Product Availability** – We stock over 10,000 SKU's and have over 45 shipping locations to serve North American and International markets for all major brands of blasting and painting equipment. As the largest provider of surface preparation and protective coatings equipment in the world, our inventory levels and product availability are unmatched.
- **Logistics Services** – Marco's in-house logistics team is dedicated to moving your shipment anywhere in the world. We move over 14,000 truckloads every year, allowing you to save on freight costs by leveraging our buying power. Lower your process costs with a single invoice, which includes product and freight.
- **Technology Leadership** – Our website provides: Operator's Manuals, Part Numbers and Schematics Guides, MSDS information, and Features and Specifications Guides, providing access to information 24/7. Our Extranet application allows you to receive quotes and place orders online. Our Intranet maintains a complete record of your purchase history to assist with ongoing support of your existing equipment and future purchasing decisions.

Vision Statement

Marco is the world's premier provider of Abrasives, Blasting Equipment, Coating Equipment, Engineered Systems, Rental Equipment, Safety Equipment, Service, and Repair.

Mission Statement

Marco provides strong leadership and innovation to the surface preparation and protective coatings industries. We dedicate our efforts to the continuous improvement of our products, services, processes, people, and most importantly, the quality of our customer's experience.

Quality Policy

Marco is committed to providing superior quality in the design, manufacturing, distribution, rental, service, and repair of our products. Our ISO 9001:2008 certification extends throughout all operations in all locations. Continuous improvement of our processes and supply chain Integration comprise the core of our business strategy for delivering exceptional quality and value in all Marco products and services.

Management Philosophy

We are a company dedicated to the success of every customer and associate. We discuss, debate, challenge, measure, and test our ideas. We will be boundless and limitless in our passion to improve. Through sound leadership and dedicated associates, we will ensure a long term, profitable future for Marco, our associates, customers, and suppliers.

TABLE OF CONTENTS

Company Profile	2
Table of Contents	3
Graco® King® 56:1 Airless Spray Pump	4-25
Graco® King® 56:1 Airless Spray Pump	4-7
High Pressure Surge Tank	8-9
High Pressure Fluid Filter	10
Graco® King® 56:1 Pumps	11-15
Graco® King® 56:1 Displacement Pumps	16-19
Graco® King® 56:1 Air Motors	20-25
Optional Accessories	26
Suction Hose and Tubes	26
Fluid Drain Valves	26
Maintenance Notes	27

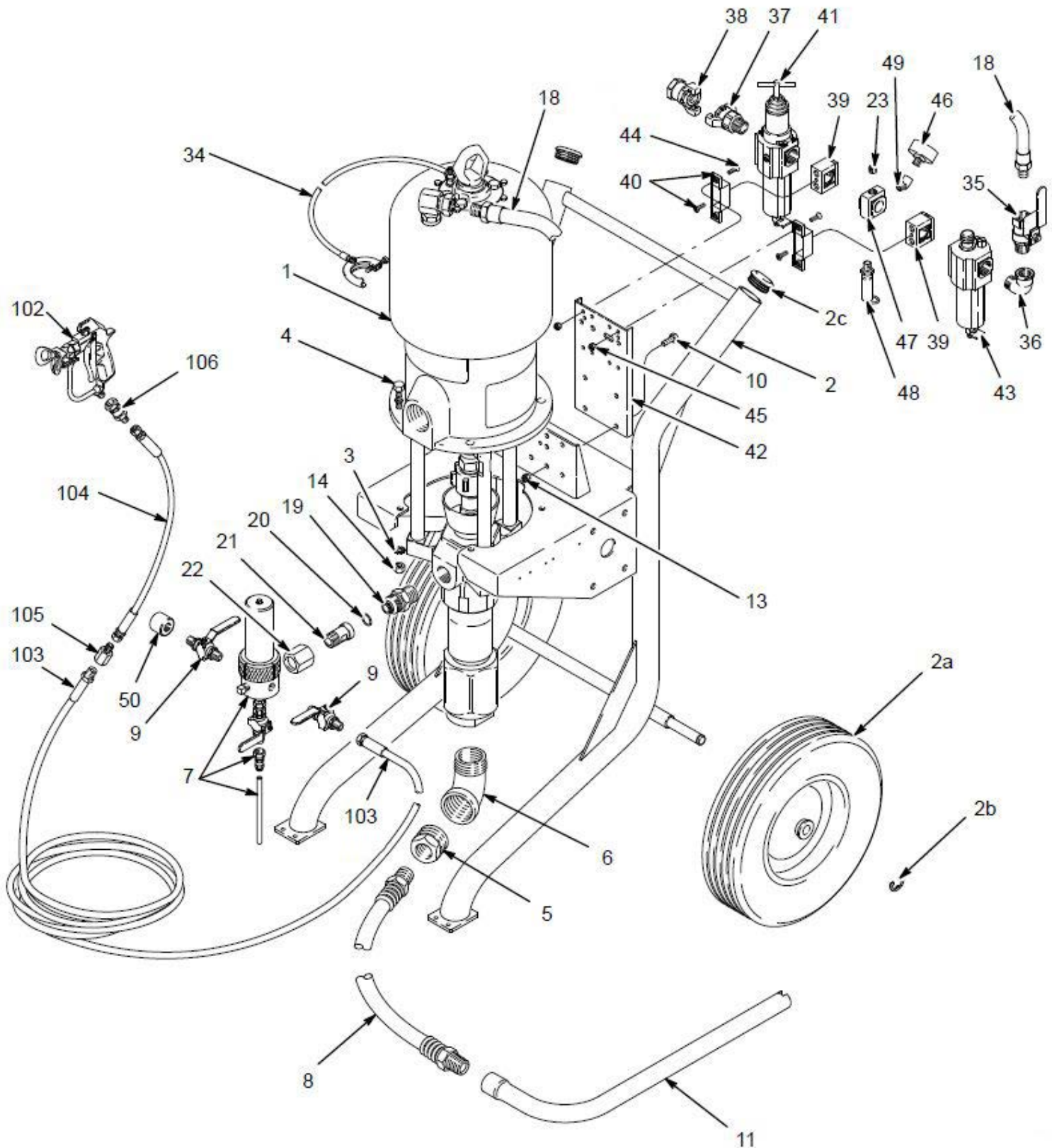
PART NUMBERS AND SCHEMATICS GUIDE

Graco® King® 56:1 Airless Spray Pump – Cart Mount with High Pressure Fluid Filter

Item#	Part#	Description	Item#	Part#	Description
Fig. 1			45	20G102040	Hex Lock Nut (<i>Quantity of Four</i>)
1	20G236475	Graco® King® 56:1 Pump (<i>See Fig. 5</i>)	46	20G112123	Air Gauge
2	20G238271	Portable Cart (<i>Includes Item #'s: 2a-2c</i>)	47	20G113442	1/4" Air Manifold
2a	20G113362	Wheel (<i>Quantity of Two</i>)	48	20G103347	Air Relief Valve, 100 psi
2b	20G113436	Retaining Ring (<i>Quantity of Two</i>)	49	20G113444	1/4" 45° Elbow
2c	20G113361	Cap (<i>Quantity of Two</i>)	50	20G113562	Valve Cap
3	20G113427	3/8" External Tooth Lock Washer (<i>Quantity of Four</i>)	101	20G238614	Silver Gun Hose Kit (<i>Includes Item #'s: 102-106</i>)
4	20G100004	Cap Screw (<i>Quantity of Four</i>)	102	20G238591	Silver Plus Gun
5	20G112839	2" (M) x 1" (F) Reducer Bushing	103	20G238396	3/8" x 50' Fluid Hose
6	20G100088	2" x 2" 90° Street Elbow	104	20GH52506	1/4" x 6' Whip Hose
7	20G238620	High Pressure Fluid Filter (<i>See Fig. 4</i>)	105	20G150287	1/4" (M) x 3/8" (F) Coupling
8	20G237522	1" I.D. x 6' Suction Hose	106	20G189018	1/4" x 1/4" Gun Swivel
9	20G238612	3/8" Ball Valve (<i>Quantity of Two</i>)	—	20G206994	Throat Seal Liquid – 8 oz.
10	20G100057	3/4" Cap Screw (<i>Quantity of Four</i>)	—	20G238131	Designation Plate Kit
11	20G197682	1" Pick Up Tube	—	20G238590	Air Regulation Kit (<i>Includes Item #'s: 23, 35, 36, 37, 38, 39, 40, 41, 43, 46, 47, and 49</i>)
13	20G111040	5/16" Lock Nut (<i>Quantity of Four</i>)	—	209V597	Operator's Manual – Graco® King® 56:1 Cart-Mounted Airless Package
14	20G100131	3/8-16 Full Hex Nut (<i>Quantity of Four</i>)			
18	20G238374	3/4" x 21" Coupled Hose			
19	20G190439	1" x 1-3/8 Carbon Steel Swivel Nipple			
20	20G112973	O-Ring Packing			
21	20G190411	3/4" Carbon Steel Swivel Adapter			
22	20G190412	1-3/8 Carbon Steel Swivel Nut			
23	20G100721	1/4" Pipe Plug			
34	20G237569	Ground Wire and Clamp			
35	20G113218	3/4" Ball Valve Vented			
36	20G100549	3/4" Pipe Elbow			
37	20G113429	3/4" (M) Air Line Coupler			
38	20G113430	3/4" (F) Air Line Coupler			
39	20G113431	Air Regulator Clamp (<i>Quantity of Two</i>)			
40	20G113432	Mounting Bracket (<i>Quantity of Two</i>)			
41	20G113494	Air Filter/Regulator			
42	20G191383	Mounting Bracket			
43	20G113435	Air Line Lubricator			
44	20G113428	Hex Socket Screw (<i>Quantity of Four</i>)			
4	Graco® King® 56:1 Airless Spray Pump				

PART NUMBERS AND SCHEMATICS GUIDE

Figure 1: Graco® King® 56:1 Airless Spray Pump – Cart Mount with High Pressure Fluid Filter



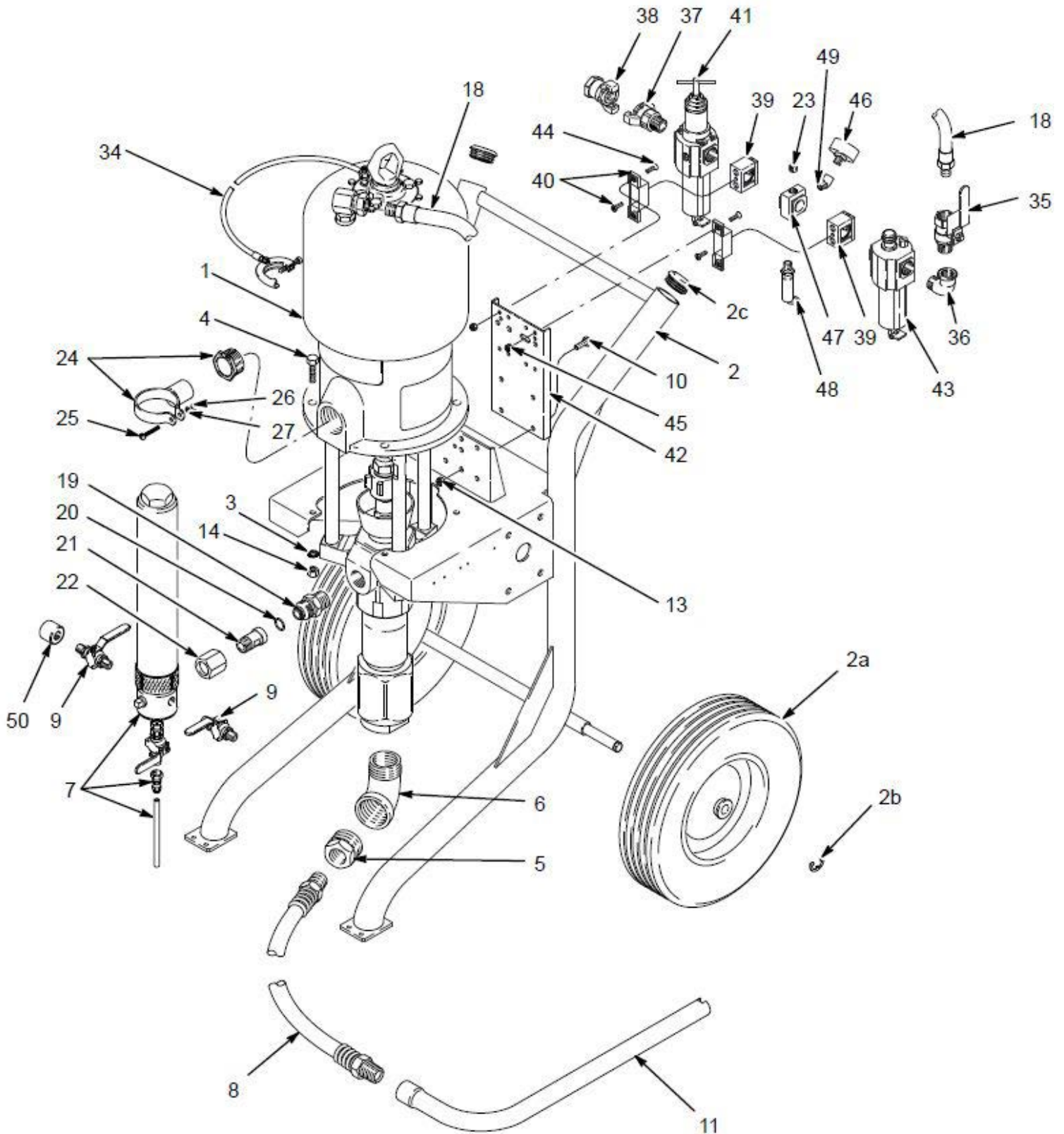
PART NUMBERS AND SCHEMATICS GUIDE

Graco® King® 56:1 Airless Spray Pump – Cart Mount with High Pressure Surge Tank

Item#	Part#	Description	Item#	Part#	Description
Fig. 2			41	20G113494	Air Filter/Regulator
1	20G236475	Graco® King® 56:1 Pump (See Fig. 5)	42	20G191383	Mounting Bracket
2	20G238271	Portable Cart (Includes Item #'s: 2a-2c)	43	20G113435	Air Line Lubricator
2a	20G113362	Wheel (Quantity of Two)	44	20G113428	Hex Socket Screw (Quantity of Four)
2b	20G113436	Retaining Ring (Quantity of Two)	45	20G102040	Hex Lock Nut (Quantity of Four)
2c	20G113361	Cap (Quantity of Two)	46	20G112123	Air Gauge
3	20G113427	3/8" External Tooth Lock Washer (Quantity of Four)	47	20G113442	1/4" Air Manifold
4	20G100004	Cap Screw (Quantity of Four)	48	20G103347	Air Relief Valve, 100 psi
5	20G112839	2" (M) x 1" (F) Reducer Bushing	49	20G113444	1/4" 45° Elbow
6	20G100088	2" x 2" 90° Street Elbow	50	20G113562	Valve Cap
7	20G238623	High Pressure Surge Tank (See Fig. 3)	—	20G206994	Throat Seal Liquid – 8 oz.
8	20G237522	1" I.D. x 6' Suction Hose	—	20G238131	Designation Plate Kit
9	20G238612	3/8" Ball Valve (Quantity of Two)	—	20G238590	Air Regulation Kit (Includes Item #'s: 23, 35, 36, 37, 38, 39, 40, 41, 43, 46, 47, and 49)
10	20G100057	3/4" Cap Screw (Quantity of Four)	—	209V597	Operator's Manual – Graco® King® 56:1 Cart-Mounted Airless Package
11	20G197682	1" Pick Up Tube			
13	20G111040	5/16" Lock Nut (Quantity of Four)			
14	20G100131	3/8-16 Full Hex Nut (Quantity of Four)			
18	20G238374	3/4" x 21" Coupled Hose			
19	20G190439	1" x 1-3/8 Carbon Steel Swivel Nipple			
20	20G112973	O-Ring Packing			
21	20G190411	3/4" Carbon Steel Swivel Adapter			
22	20G190412	1-3/8 Carbon Steel Swivel Nut			
23	20G100721	1/4" Pipe Plug			
24	20G238630	Surge Tank Clamp			
25	20G100902	Round Head Machine Screw			
26	20G100015	1/4-20 Hex Nut			
27	20G100016	1/4" Spring Lock Washer			
34	20G237569	Ground Wire and Clamp			
35	20G113218	3/4" Ball Valve Vented			
36	20G100549	3/4" Pipe Elbow			
37	20G113429	3/4" (M) Air Line Coupler			
38	20G113430	3/4" (F) Air Line Coupler			
39	20G113431	Air Regulator Clamp (Quantity of Two)			
40	20G113432	Mounting Bracket (Quantity of Two)			

PART NUMBERS AND SCHEMATICS GUIDE

Figure 2: Graco® King® 56:1 Airless Spray Pump – Cart Mount with High Pressure Surge Tank



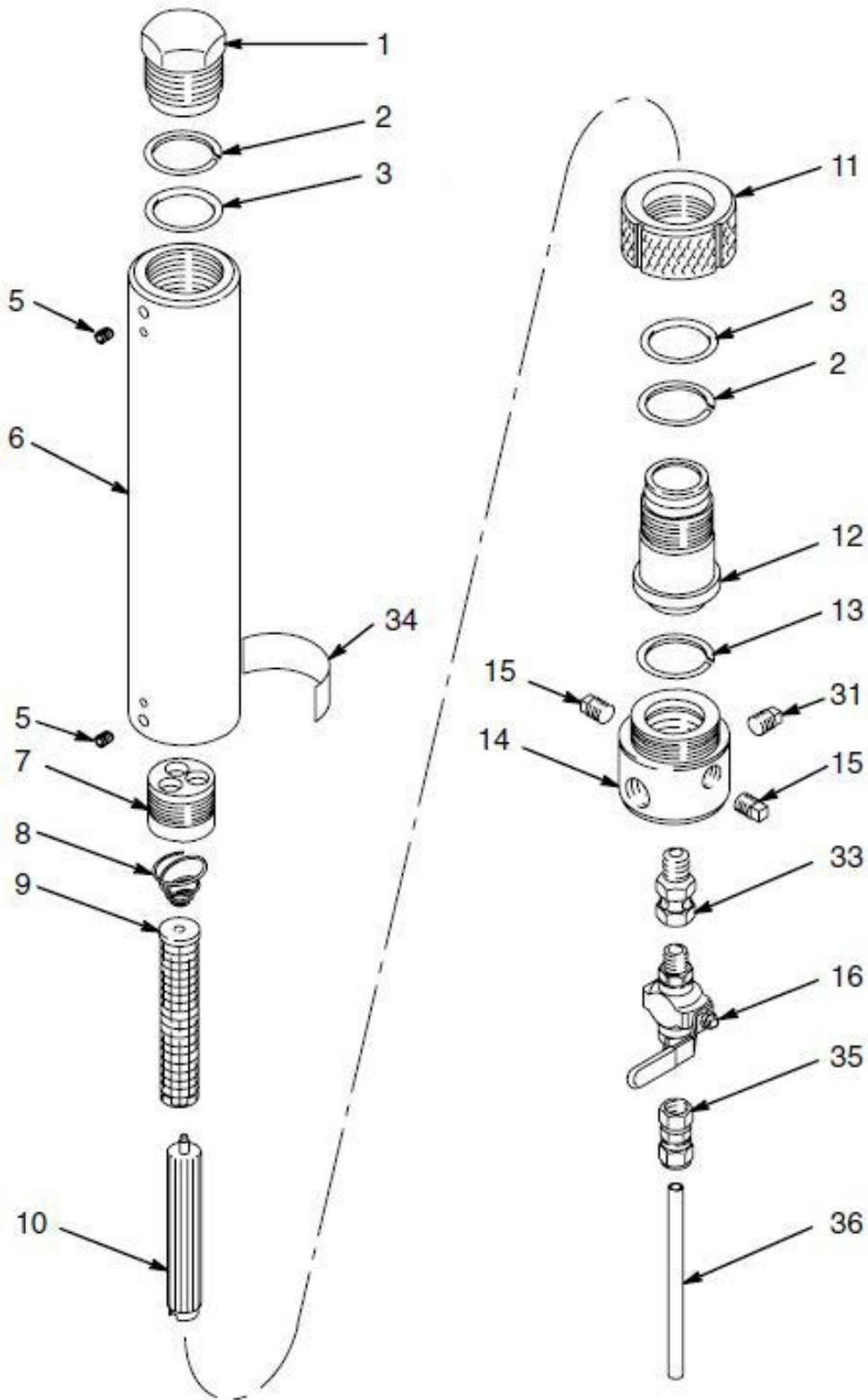
PART NUMBERS AND SCHEMATICS GUIDE

High Pressure Surge Tank

Item#	Part#	Description
Fig. 3		
—	20G238623	High Pressure Surge Tank
1	20G174064	End Plug
2	20G104805	Backup Ring, PTFE (<i>Quantity of Two</i>)
3	20G166612	Packing O-Ring, PTFE (<i>Quantity of Two</i>)
5	20G111463	1/4-20 x 3/8" Setscrew (<i>Quantity of Two</i>)
6	—	Tank (<i>Not Sold Separately</i>)
7	20G174059	Filter Adapter
8	20G171941	Conical Compression Spring, 7,250 psi
9	20G167025	Strainer, 60 Mesh
10	20G186075	Filter Support
11	20G174058	Lock Ring
12	20G174068	Adapter Accumulator
13	20G104804	Packing O-Ring, PTFE
14	20G24C497	Paint Filter Manifold
15	20G104813	3/8" NPT Pipe Plug (<i>Quantity of Two</i>)
16	20G238612	3/8" NPT Ball Valve
31	20G104839	1/2" NPT Pipe Plug
33	20G155665	3/8" (M) x 3/8" (F) Union Swivel
34	20G159579	Warning Label
35	20G205448	3/8" (F) Swivel Coupling
36	20G186447	Nylon Drain Tube
—	209V583	Operator's Manual – Graco® High Pressure Surge Tanks and Fluid Filters

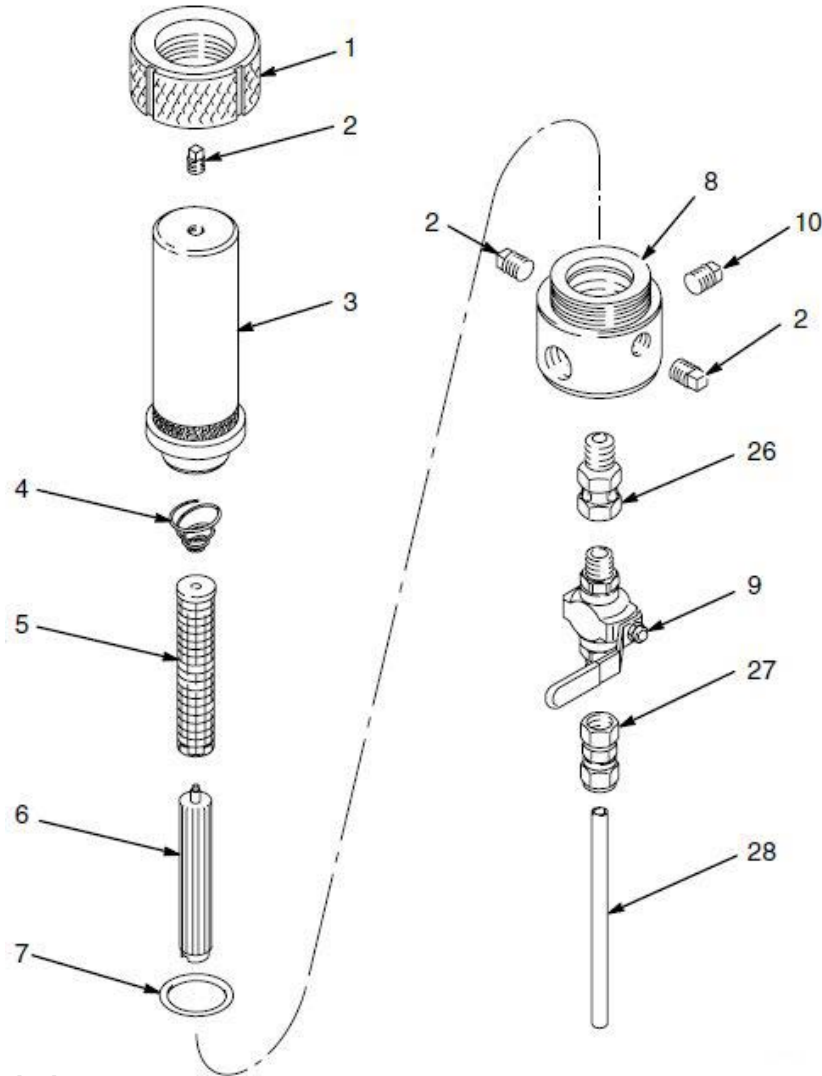
PART NUMBERS AND SCHEMATICS GUIDE

Figure 3: High Pressure Surge Tank



PART NUMBERS AND SCHEMATICS GUIDE

Figure 4: High Pressure Fluid Filter



Item#	Part#	Description
-------	-------	-------------

Fig. 4

—	20G238620	High Pressure Fluid Filter – 60 Mesh
---	-----------	--------------------------------------

1	20G174058	Lock Ring
---	-----------	-----------

2	20G104816	3/8" NPT Pipe Plug (Quantity of Three)
---	-----------	--

3	20G174056	Filter Bowl, 7,250 psi
---	-----------	------------------------

4	20G171941	Conical Compression Spring, 7,250 psi
---	-----------	---------------------------------------

5	20G167025	Strainer, 60 Mesh
---	-----------	-------------------

6	20G186075	Filter Support
---	-----------	----------------

7	20G104804	Packing O-Ring, PTFE
---	-----------	----------------------

8	20G24C497	Paint Filter Manifold
---	-----------	-----------------------

9	20G223960	3/8" x 3/8" Ball Valve
---	-----------	------------------------

10	20G104839	1/2" NPT Pipe Plug
----	-----------	--------------------

26	20G155665	3/8" (M) x 3/8" (F) Union Swivel
----	-----------	----------------------------------

27	20G205448	3/8" (F) Swivel Coupling
----	-----------	--------------------------

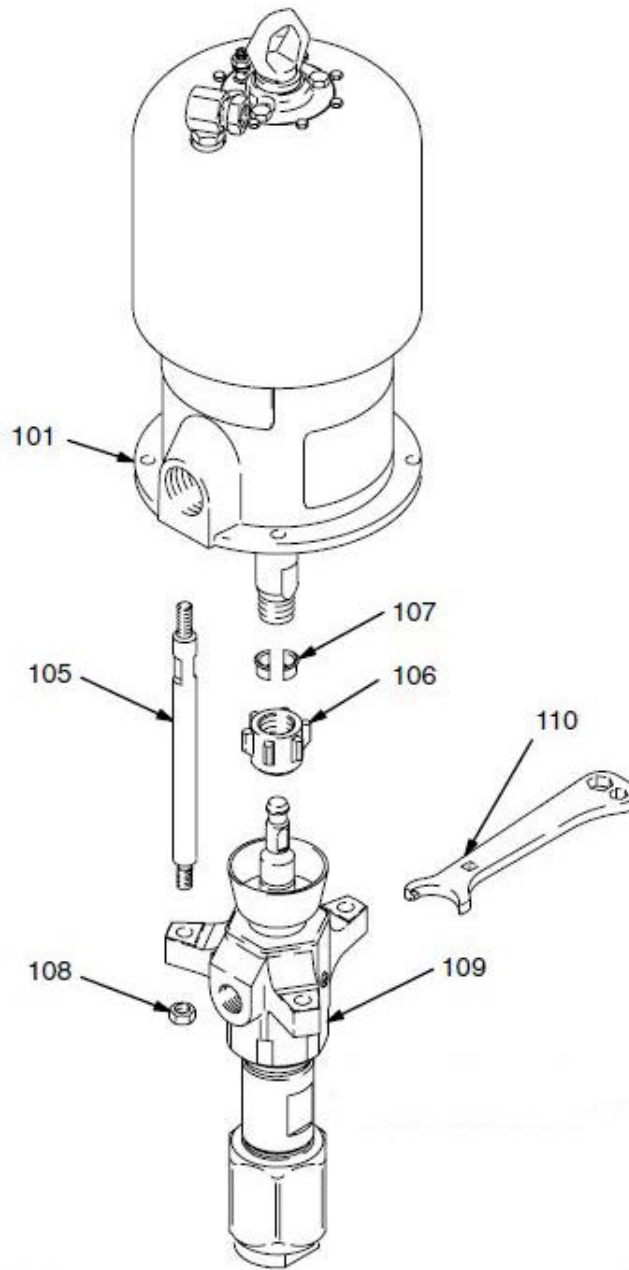
28	20G186447	Nylon Drain Tube
----	-----------	------------------

—	209V583	Operator's Manual – Graco® High Pressure Surge Tanks and Fluid Filters
---	---------	--

10	Graco® King® 56:1 Airless Spray Pump
----	--------------------------------------

PART NUMBERS AND SCHEMATICS GUIDE

Figure 5: Graco® King® 56:1 Dura-Flo 900™ Pump with Standard Air Motor



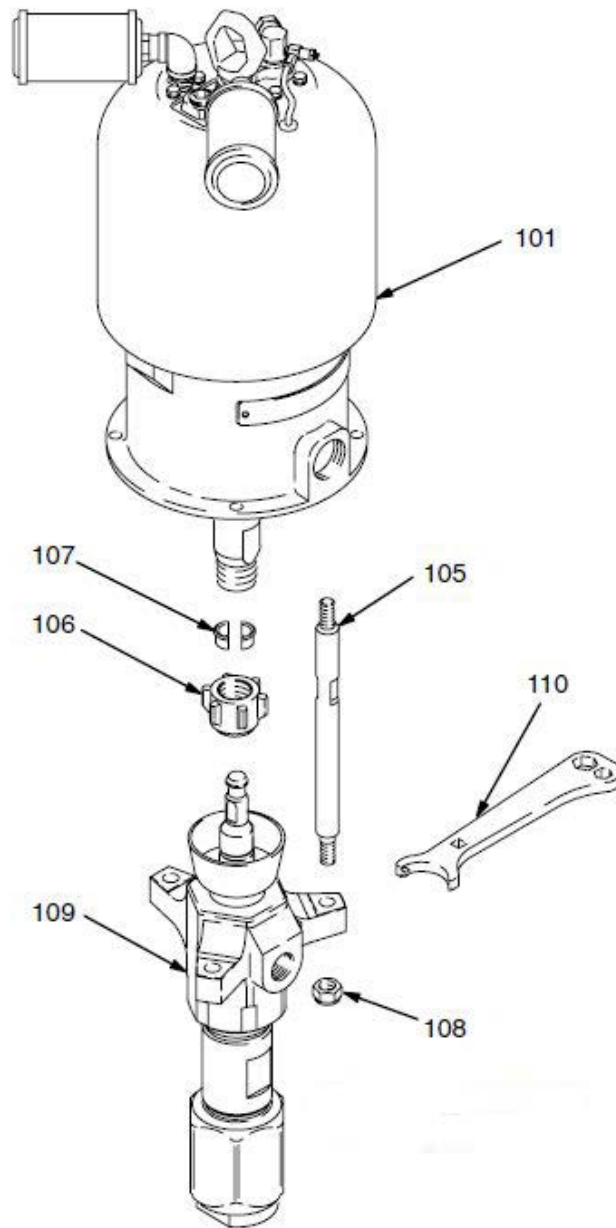
Item#	Part#	Description
-------	-------	-------------

Fig. 5

101	20G245111	Graco® King® Standard Air Motor (See Fig. 11)
105	20G190000	Connecting Rod (Quantity of Three)
106	20G186925	Coupling Nut
107	20G184129	Coupling (Quantity of Two)
108	20G106166	Hex Nut (Quantity of Two)
109	20G234466	Displacement Pump (See Fig. 9)
110	20G112887	Wrench – Spanner
—	20G235417	Connection Kit (Includes Item #'s: 105, 106, 107, 108, and 110)
—	209V598	Operator's Manual – Graco® Carbon Steel Dura-Flo™ 900 Pumps

PART NUMBERS AND SCHEMATICS GUIDE

Figure 6: Graco® King® 56:1 Dura-Flo 900™ Pump with Reduced Icing Quiet Air Motor



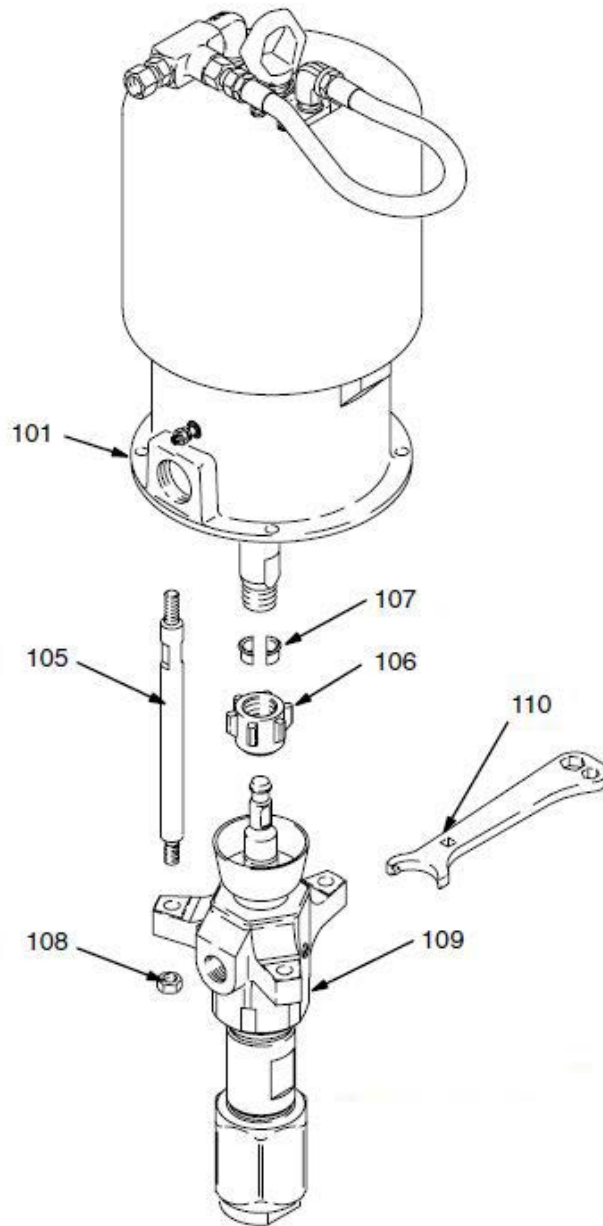
Item#	Part#	Description
-------	-------	-------------

Fig. 6

101	20G245112	Graco® King® Reduced Icing Quiet Air Motor (See Fig. 12)
105	20G190000	Connecting Rod (Quantity of Three)
106	20G186925	Coupling Nut
107	20G184129	Coupling (Quantity of Two)
108	20G106166	Hex Nut (Quantity of Two)
109	20G234466	Displacement Pump (See Fig. 9)
110	20G112887	Wrench – Spanner
—	20G235417	Connection Kit (Includes Item #'s: 105, 106, 107, 108, and 110)
—	209V598	Operator's Manual – Graco® Carbon Steel Dura-Flo™ 900 Pumps

PART NUMBERS AND SCHEMATICS GUIDE

Figure 7: Graco® King® 56:1 Dura-Flo 900™ Pump with Standard Quiet Air Motor



Item#	Part#	Description
Fig. 7		
101	20G220106	Graco® King® Standard Quiet Air Motor (See Fig. 13)
105	20G190000	Connecting Rod (Quantity of Three)
106	20G186925	Coupling Nut
107	20G184129	Coupling (Quantity of Two)
108	20G106166	Hex Nut (Quantity of Two)
109	20G234466	Displacement Pump (See Fig. 9)
110	20G112887	Wrench – Spanner
—	20G235417	Connection Kit (Includes Item #'s: 105, 106, 107, 108, and 110)
—	209V598	Operator's Manual – Graco® Carbon Steel Dura-Flo™ 900 Pumps

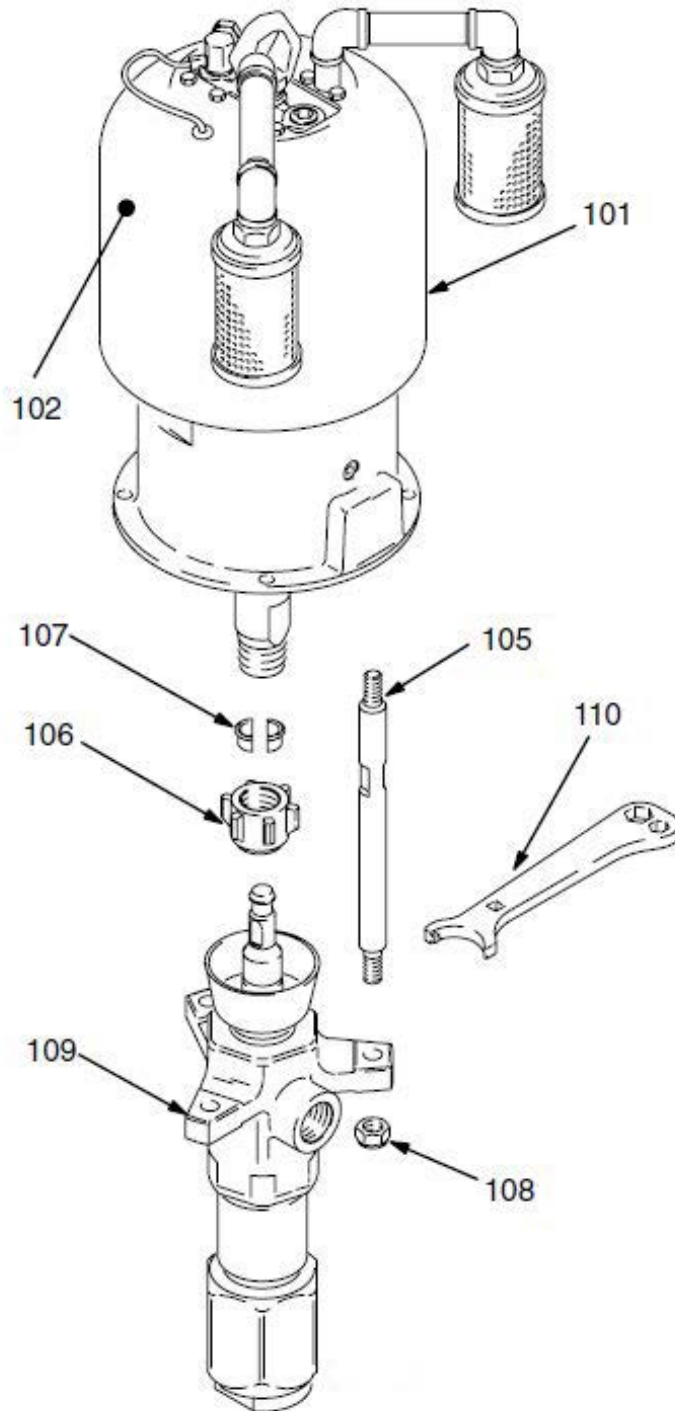
PART NUMBERS AND SCHEMATICS GUIDE

Graco® King® 56:1 Stainless Steel Dura-Flo 900™ Pumps

Item#	Part#	Description
Fig. 8		
—	20G245172	Stainless Steel Dura-Flo 900™ Pump with Standard Air Motor
—	20G237286	Stainless Steel Dura-Flo 900™ Pump with Reduced Icing Quiet Air Motor
—	20G245173	Stainless Steel Dura-Flo 900™ Pump with Standard Quiet Air Motor
101	20G245111	Graco® King® Standard Air Motor (See Fig. 11) (For Model 20G245172)
—	20G245112	Graco® King® Reduced Icing Quiet Air Motor (See Fig. 12) (For Model 20G237286)
—	20G220106	Graco® King® Standard Quiet Air Motor (See Fig. 13) (For Model 20G245173)
102	20G176529	Warning Label
105	20G190000	Connecting Rod (Quantity of Three)
106	20G186925	Coupling Nut
107	20G184129	Coupling (Quantity of Two)
108	20G106166	Hex Nut (Quantity of Two)
109	20G236470	Displacement Pump (See Fig. 10)
110	20G112887	Wrench – Spanner
—	20G235418	Connection Kit
—	209V599	Operator's Manual – Graco® Stainless Steel Dura-Flo™ 900 Pumps

PART NUMBERS AND SCHEMATICS GUIDE

Figure 8: Graco® King® 56:1 Stainless Steel Dura-Flo 900™ Pumps



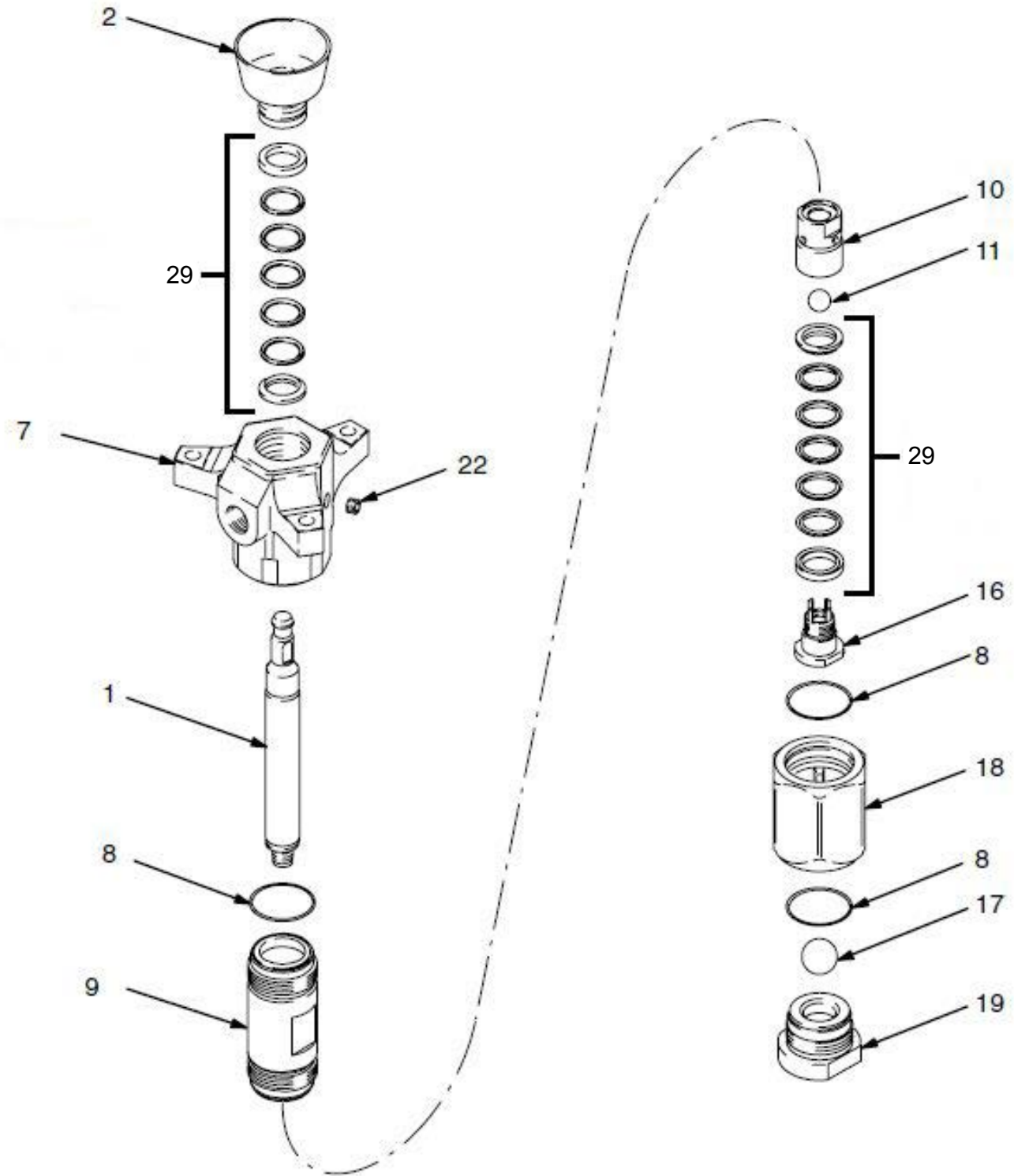
PART NUMBERS AND SCHEMATICS GUIDE

Graco® Dura-Flo™ 900 Displacement Pump

Item#	Part#	Description
Fig. 9		
1	20G189316	Displacement Rod – Stainless Steel
2	20G222995	Packing Nut – Carbon Steel
7	20G237181	Housing Outlet
8	20G109499	Seal – Teflon (<i>Quantity of Three</i>)
9	20G189383	Cylinder – Stainless Steel
10	20G189407	Housing Ball Piston – Carbon Steel
11	20G100400	3/4" Chrome Steel Piston Ball
16	20G236587	Dura-Flo™ Housing Valve Cage & Seat
17	20G108001	Intake Ball – Stainless Steel
18	20G184538	Housing Intake Valve
19	20G222952	Intake Valve
22	20G101754	Socket Head Pipe Plug
29	20G237163	Leather Packing Kit
—	20G172477	Warning Tag
—	20G172479	Warning Tag
—	209V598	Operator's Manual – Graco® Carbon Steel Dura-Flo™ 900 Pumps

PART NUMBERS AND SCHEMATICS GUIDE

Figure 9: Graco® Dura-Flo™ 900 Displacement Pump



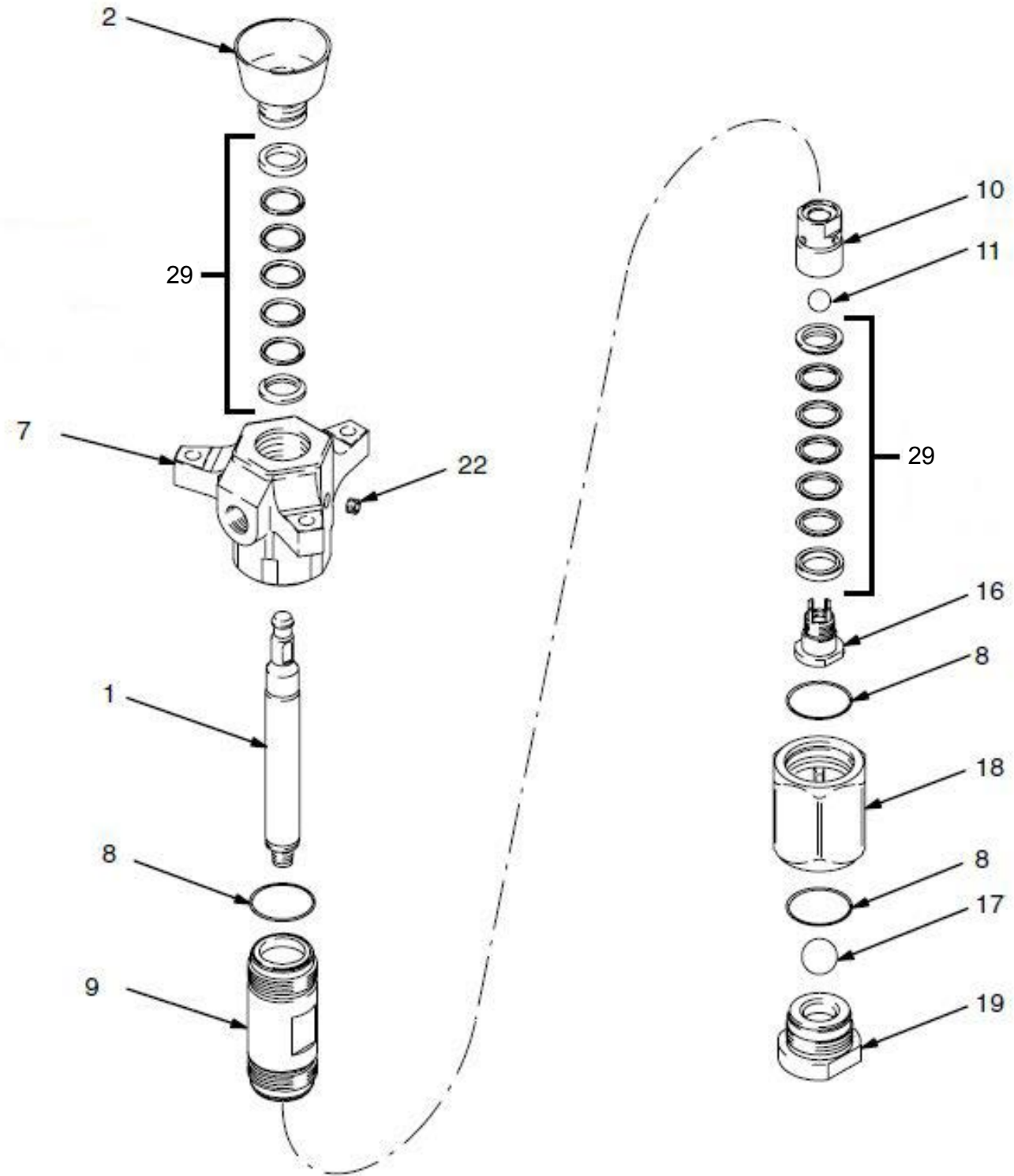
PART NUMBERS AND SCHEMATICS GUIDE

Graco® King® Stainless Steel Displacement Pump

Item#	Part#	Description
Fig. 10		
1	20G189316	Displacement Rod – Stainless Steel
2	20G236582	Packing Nut – Stainless Steel
7	20G237182	Housing Outlet – Stainless Steel
8	20G109499	Seal – Teflon (<i>Quantity of Three</i>)
9	20G189383	Cylinder – Stainless Steel
10	20G189408	Housing Ball Piston – Stainless Steel
11	20G101859	3/4" Stainless Steel Piston Ball
16	20G236587	Dura-Flo™ Housing Valve Cage & Seat
17	20G108001	Intake Ball – Stainless Steel
18	20G189396	Housing Intake Valve – Stainless Steel
19	20G236588	Intake Valve – Stainless Steel
22	20G101749	Socket Head Pipe Plug – Stainless Steel
29	20G237172	Leather Packing Kit
—	20G172477	Warning Tag
—	20G172479	Warning Tag
—	209V599	Operator's Manual – Graco® Stainless Steel Dura-Flo™ 900 Pumps

PART NUMBERS AND SCHEMATICS GUIDE

Figure 10: Graco® King® Stainless Steel Displacement Pump



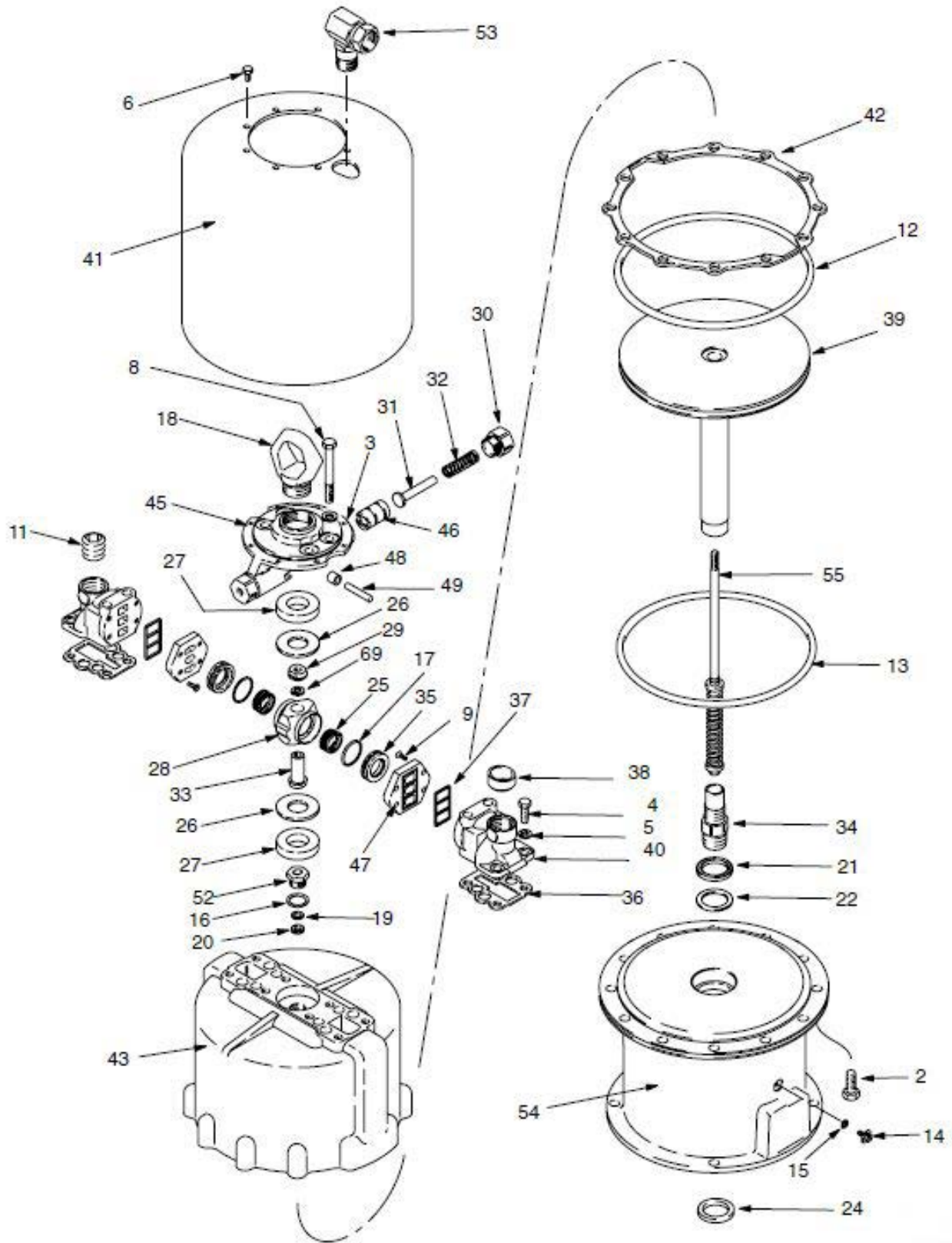
PART NUMBERS AND SCHEMATICS GUIDE

Graco® King® Standard Air Motor

Item#	Part#	Description	Item#	Part#	Description
Fig. 11			38	20G168185	Air Inlet Grommet
—	20G245111	Graco® King® Standard Air Motor	39	20G245114	Air Piston
2	20G100424	1-1/4" Screw (<i>Quantity of 12</i>)	40	20G168187	Air Manifold (<i>Quantity of Two</i>)
3	20G100052	7/16" Lock Washer (<i>Quantity of Four</i>)	41	20G168188	Air Motor Shield
4	20G100101	1" Screw (<i>Quantity of Four</i>)	42	20G168189	Motor Gasket
5	20G100133	3/8" Lock Washer (<i>Quantity of Four</i>)	43	20G168191	Air Motor Cylinder
6	20G113161	Slot Screw (<i>Quantity of Eight</i>)	45	20G177664	Detent Housing
8	20G101713	Cap Screw (<i>Quantity of Four</i>)	46	20G169583	Roller Plunger (<i>Quantity of Two</i>)
9	20G101713	Screw (<i>Quantity of Eight</i>)	47	20G169584	Air Valve Plate (<i>Quantity of Two</i>)
11	20G102726	1" Pipe Plug	48	20G169585	Axle Roller (<i>Quantity of Two</i>)
12	20G102727	Packing O-Ring – Nitrile Rubber	49	20G169586	Detent Axle (<i>Quantity of Two</i>)
13	20G102737	Packing O-Ring – Buna-N	52	20G215933	Trip Rod Bearing
16	20G150647	Metallic Gasket – Copper	53	20G207648	3/4" x 3/4" Adapter Union
17	20G156698	Packing O-Ring – Buna-N (<i>Quantity of Two</i>)	54	20G245115	Base
18	20G180952	Lift Ring	55	20G218597	Trip Rod Assembly
19	20G161559	Backup Washer	69	20G105319	10 mm Lock Washer
20	20G161560	V-Packing – Polyurethane	—	20G290331	Warning Label
21	20G161562	V-Packing – Nitrile Rubber	—	20G189991	Warning Label
22	20G161563	Backup Washer	—	20G207730	Graco® King® Standard Air Motor Repair Kit (<i>Includes Item #'s: 12, 17, 19, 20, 21, 22, 24, 36, 37, and 42</i>)
24	20G161569	Seal – Felt Wiper	—	209V592	Operator's Manual – Graco® King® Air Motor
25	20G161575	Compression Spring (<i>Quantity of Two</i>)			
26	20G161576	Flat Washer			
27	20G161577	Air Motor Bumper (<i>Quantity of Two</i>)			
28	20G161585	Air Valve Housing			
29	20G176569	Trip Rod Nut			
30	20G161587	Spring Retainer (<i>Quantity of Two</i>)			
31	20G161588	Spring Guide (<i>Quantity of Two</i>)			
32	20G161589	Compression Spring (<i>Quantity of Two</i>)			
33	20G176568	Trip Rod Bushing			
34	20G176564	Connecting Rod Stud			
35	20G168182	Air Director Valve (<i>Quantity of Two</i>)			
36	20G168183	Air Manifold Gasket (<i>Quantity of Two</i>)			
37	20G168184	Plate Seal (<i>Quantity of Two</i>)			

PART NUMBERS AND SCHEMATICS GUIDE

Figure 11: Graco® King® Standard Air Motor



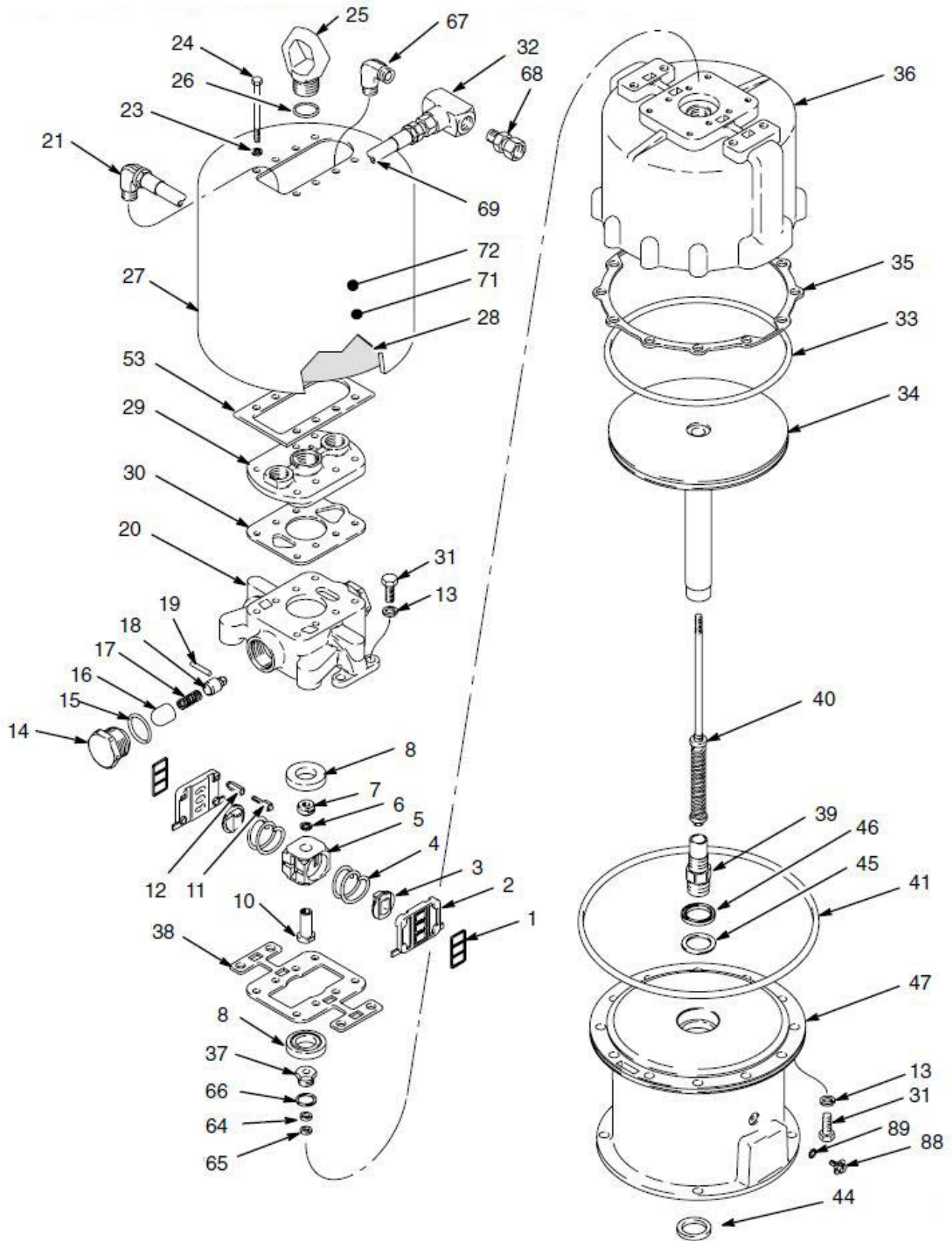
PART NUMBERS AND SCHEMATICS GUIDE

Graco® King® Standard Quiet Air Motor

Item#	Part#	Description	Item#	Part#	Description
Fig. 12					
—	20G220106	Graco® King® Standard Quiet Air Motor	35	20G168189	Motor Gasket
1	20G168184	Plate Seal (<i>Quantity of Two</i>)	36	20G181297	Cylinder
2	20G176536	Valve Plate (<i>Quantity of Two</i>)	37	20G215933	Trip Rod Bearing
3	20G176518	Director Valve (<i>Quantity of Two</i>)	38	20G176575	Gasket – Cellulose Fiber
4	20G176543	Compression Spring (<i>Quantity of Two</i>)	39	20G176564	Connecting Rod Stud
5	20G176519	Air Valve Housing	40	20G218597	Trip Rod Assembly
6	20G105319	10 mm Lock Washer	41	20G102737	Packing O-Ring – Buna-N
7	20G176569	Trip Rod Nut	44	20G161569	Seal – Felt Wiper
8	20G176549	Rubber Pad (<i>Quantity of Two</i>)	45	20G161563	Backup Washer
10	20G176568	Trip Rod Bushing	46	20G161562	V-Packing – Nitrile Rubber
11	20G176550	Adjusting Screw (<i>Quantity of Four</i>)	47	20G245115	Base
12	20G176548	Adjusting Nut (<i>Quantity of Four</i>)	53	20G177081	Gasket – Neoprene
13	20G100018	Lock Washer (<i>Quantity of Two</i>)	64	20G161559	Backup Washer
14	20G178428	Toggle Retainer (<i>Quantity of Two</i>)	65	20G161560	V-Packing – Polyurethane
15	20G105318	O-Ring – Nitrile Rubber (<i>Quantity of Two</i>)	66	20G150647	Metallic Gasket – Copper
16	20G178427	Housing Guide (<i>Quantity of Two</i>)	67	20G108307	3/4" Pipe Elbow
17	20G178429	Compression Spring (<i>Quantity of Two</i>)	68	20G157785	3/4" x 3/4" Union Swivel
18	20G178426	Spring Housing (<i>Quantity of Two</i>)	69	20G214953	3/4" I.D. Air Hose
19	20G105321	Dowel Pin (<i>Quantity of Two</i>)	71	20G290331	Warning Label
20	20G181322	Air Manifold	72	20G189991	Warning Label
21	20G100549	3/4" Pipe Elbow	88	20G116343	Grounding Clamp
23	20G104572	8 mm Lock Washer (<i>Quantity of Eight</i>)	89	20G111307	Tab Washer
24	20G105322	Cap Screw (<i>Quantity of Eight</i>)	—	20G207730	Graco® King® Standard Quiet Air Motor Repair Kit (<i>Includes Item #'s: 1, 15, 30, 33, 35, 38, 44, 45, 46, 64, and 65</i>)
25	20G176537	Lift Ring	—	209V594	Operator's Manual – Graco® King® Quiet Air Motor
26	20G166221	O-Ring – Nitrile Rubber			
27	20G181276	Shield			
28	20G181308	Insulation (<i>Quantity of Two</i>)			
29	20G181321	Manifold Cap			
30	20G181323	Gasket – Cellulose Fiber			
31	20G105324	Hex Head Cap Screw (<i>Quantity of 16</i>)			
32	20G166466	3/4" (F) Pipe Tee			
33	20G102727	Packing O-Ring – Nitrile Rubber			
34	20G245114	Air Piston			
22	Graco® King® 56:1 Airless Spray Pump				

PART NUMBERS AND SCHEMATICS GUIDE

Figure 12: Graco® King® Standard Quiet Air Motor



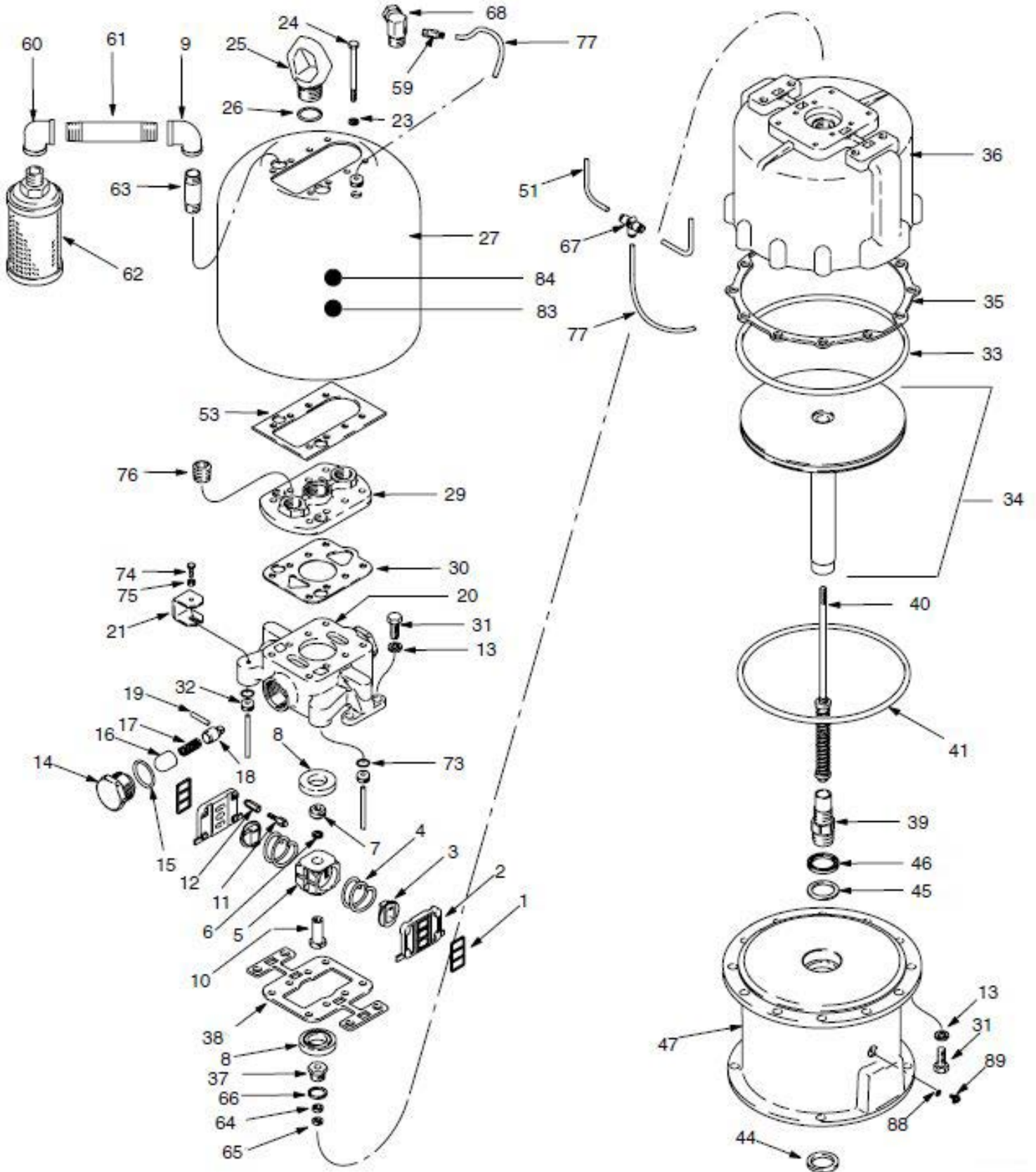
PART NUMBERS AND SCHEMATICS GUIDE

Graco® King® Reduced Icing Quiet Air Motor





Item#	Part#	Description	Item#	Part#	Description
Fig. 13			36	20G181297	Cylinder
—	20G245112	Graco® King® Reduced Icing Quiet Air Motor	37	20G215933	Trip Rod Bearing
1	20G168184	Plate Seal (<i>Quantity of Two</i>)	38	20G176575	Gasket – Cellulose Fiber
2	20G176536	Valve Plate (<i>Quantity of Two</i>)	39	20G176564	Connecting Rod Stud
3	20G176518	Director Valve (<i>Quantity of Two</i>)	40	20G218597	Trip Rod Assembly
4	20G176543	Compression Spring (<i>Quantity of Two</i>)	41	20G102737	Packing O-Ring – Buna-N
5	20G176519	Air Valve Housing	44	20G161569	Seal – Felt Wiper
6	20G105319	10 mm Lock Washer	45	20G161563	Backup Washer
7	20G176569	Trip Rod Nut	46	20G161562	V-Packing – Nitrile Rubber
8	20G176549	Rubber Pad (<i>Quantity of Two</i>)	47	20G245115	Base
9	20G112885	Reducing Elbow (<i>Quantity of Two</i>)	51	20G190009	1/4" x 8" Nylon Tube (<i>Quantity of Two</i>)
10	20G176568	Trip Rod Bushing	53	20G112740	Gasket – Neoprene
11	20G176550	Adjusting Screw (<i>Quantity of Four</i>)	59	20G116691	Connector Tube Fitting
12	20G176548	Adjusting Nut (<i>Quantity of Four</i>)	60	20G116642	90° Pipe Elbow Fitting (<i>Quantity of Two</i>)
13	20G100018	Lock Washer (<i>Quantity of Two</i>)	61	20G116647	1" Pipe Nipple Fitting (<i>Quantity of Two</i>)
14	20G178428	Toggle Retainer (<i>Quantity of Two</i>)	62	20G198311	Reduced Icing Muffler (<i>Quantity of Two</i>)
15	20G105318	O-Ring – Nitrile Rubber (<i>Quantity of Two</i>)	63	20G116662	1/2" Pipe Nipple Fitting (<i>Quantity of Two</i>)
16	20G178427	Housing Guide (<i>Quantity of Two</i>)	64	20G161559	Backup Washer
17	20G178429	Compression Spring (<i>Quantity of Two</i>)	65	20G161560	V-Packing – Polyurethane
18	20G178426	Spring Housing (<i>Quantity of Two</i>)	66	20G150647	Metallic Gasket – Copper
19	20G105321	Dowel Pin (<i>Quantity of Two</i>)	67	20G112739	Union Tee
20	20G181322	Air Manifold	68	20G189986	Air Inlet Fitting
21	20G112735	Bracket (<i>Quantity of Two</i>)	73	20G109018	O-Ring – Nitrile Rubber (<i>Quantity of Two</i>)
23	20G104572	8 mm Lock Washer (<i>Quantity of Eight</i>)	74	20G112117	Hex Head Screw (<i>Quantity of Two</i>)
24	20G105322	Cap Screw (<i>Quantity of Eight</i>)	75	20G105912	Hex Nut (<i>Quantity of Two</i>)
25	20G176537	Lift Ring	76	20G102726	1" Pipe Plug
26	20G166221	O-Ring – Nitrile Rubber	77	20G190010	1/4" x 21" Nylon Tube
27	20G112736	Air Motor Shield	83	20G290331	Warning Label
29	20G189985	Manifold Cap	84	20G189991	Warning Label
30	20G112741	Gasket – Cellulose Fiber	88	20G116343	Grounding Clamp
31	20G105324	Hex Head Cap Screw (<i>Quantity of 16</i>)	89	20G111307	Tab Washer
32	20G112738	Grommet (<i>Quantity of Three</i>)	—	20G207730	Graco® King® Reduced Icing Quiet Air Motor Repair Kit (<i>Includes Item #'s: 1, 15, 30, 33, 35, 38, 44, 45, 46, 64, and 65</i>)
33	20G102727	Packing O-Ring – Nitrile Rubber	—	209V594	Operator's Manual – Graco® King® Quiet Air Motor
34	20G245114	Air Piston			
35	20G168189	Motor Gasket			
24	Graco® King® 56:1 Airless Spray Pump				




PART NUMBERS AND SCHEMATICS GUIDE

Figure 13: Graco® King® Reduced Icing Quiet Air Motor



OPTIONAL ACCESSORIES

	Part Numbers	SUCTION HOSE AND TUBES	
		Description	
	20G197682	1" Suction Tube	
	20G245136	55 Gallon Suction Tube Extension Kit (Includes Suction Tube and Couplings)	
	20G237522	1" I.D. x 6' Suction Hose	
	20G247301	1" I.D. x 6' Suction Hose with Couplings	

	Part Numbers	FLUID DRAIN VALVES		
		Inlet	Outlet	Maximum Working Pressure
	20G210657	1/4" NPT	1/4" NPT	5,000 psi
	20G210659	1/4" NPT	3/8" NPT	5,000 psi
	20G210658	3/8" NPT	3/8" NPT	5,000 psi

GLOBAL HEADQUARTERS

- 3425 East Locust Street
Davenport, IA 52803

ph: 800.BLAST.IT (800.252.7848)

ph: 563.324.2519

fax: 563.324.6258

GULF STATES HEADQUARTERS

- 701 East Boulevard
Deer Park, TX 77536

ph: 800.BLAST.IT (800.252.7848)

ph: 281.930.0905

fax: 281.542.0736

REGIONAL BRANCH OFFICES

- **Iowa**
Davenport
- **Louisiana**
Gonzales
Lafayette
- **Ohio**
Youngstown
- **Texas**
Beaumont
Corpus Christi
Deer Park



ABRASIVES

BLASTING

COATING

DUST COLLECTORS

ENGINEERED SYSTEMS

RENTAL

SAFETY

SERVICE & REPAIR

VACUUMS

40+ NATIONWIDE SHIPPING LOCATIONS



★ Marco Regional Branch Offices
and Shipping Locations

● Direct Shipping Locations

CONTACT MARCO

800.BLAST.IT

(800.252.7848)

563.324.2519

FAX: 563.324.6258

WWW.MARCO.US

SALES@MARCO.US