



DUSTMASTER® 8,000 CFM ELECTRIC DUST COLLECTOR



BUILT MARCO
TOUGH
MARCO MANUFACTURED

PART NUMBERS AND SCHEMATICS GUIDE

Company Profile

Since 1944, Marco has developed a strong tradition of providing innovative and reliable products and services to the surface preparation and protective coatings industries. We are the world's premier provider of Abrasives, Blasting, Coating, Dust Collectors, Engineered Systems, Rental, Safety, Service, Repair, & Modernization, and Vacuums.

Through innovative designs and a total commitment to quality, Marco manufactures products that increase production rates, create a safer workplace, and reduce maintenance costs. Marco's industry experience, manufacturing capabilities, legendary customer service, product availability, logistics services, and technology leadership is your assurance that we deliver high quality products and services, providing the best value to you, our customer.

The Marco Difference

- **Industry Experience** – With Marco on your team, you have access to expertise which can only come from decades of industry leadership. We have organized our engineering department, production specialists, customer operations, and safety support into a “Center of Competence.” As a Marco customer, you have access to hundreds of years of cumulative experience related to your operations.
- **Manufacturing Excellence** – Marco is a manufacturer of equipment for the Surface Preparation and Protective Coatings industries. Marco's engineers benchmark the industry to ensure that we design and manufacture superior products that set the “Gold Standard” for performance, safety, and quality.
- **Legendary Customer Service** – Marco's legendary customer service team is staffed by friendly, highly-trained individuals who are focused on providing the highest level of product support, order accuracy, and customer satisfaction.
- **Product Availability** – We stock over 10,000 SKU's and have more than 45 shipping locations to serve North American and International markets for all major brands of blasting and coating equipment. As the largest provider of surface preparation and protective coatings equipment in the world, our inventory levels and product availability are unmatched.
- **Logistics Services** – Marco's in-house logistics team is dedicated to moving your shipment anywhere in the world. We move more than 14,000 truckloads every year, allowing you to save on freight costs by leveraging our buying power. Lower your process costs with a single invoice, which includes product and freight.
- **Technology Leadership** – Our website provides: Operator's Manuals, Part Numbers and Schematics Guides, SDS information, and Features & Specifications Guides, providing access to information 24/7. Our Extranet application allows you to receive quotes and place orders online. Our Intranet maintains a complete record of your purchase history to assist with ongoing support of your existing equipment and future purchasing decisions.

Vision Statement

Marco is the world's premier provider of Abrasives, Blasting, Coating, Dust Collectors, Engineered Systems, Rental, Safety, Service, Repair, & Modernization, and Vacuums.

Mission Statement

Marco provides strong leadership and innovation to the surface preparation and protective coatings industries. We dedicate our efforts to the continuous improvement of our products, services, processes, people, and most importantly, the quality of our customer's experience.

Quality Statement

Marco is committed to providing superior quality in the design, manufacturing, distribution, rental, service, and repair of our products. Continuous improvement of our processes and supply chain Integration comprise the core of our business strategy for delivering exceptional quality and value in all Marco products and services.

Management Philosophy

We are a company dedicated to the success of every customer and associate. We discuss, debate, challenge, measure, and test our ideas. We will be boundless and limitless in our passion to improve. Through sound leadership and dedicated associates, we will ensure a long term, profitable future for Marco, our associates, customers, and suppliers.

TABLE OF CONTENTS

Company Profile	1
Table of Contents	2
Part numbers	3
Specifications	4
Part Numbers and Schematics	5
Front Assembly	5
Fan Belt Assembly	7
Fan Belt Guard Back Assembly	8
Fan Assembly	9
Access Panel Assembly	10
Pneumatic Ball Vibrators	10
Pulser System Assembly	11
Pulser Regulator and Timer Assembly	13
Pulser Solenoid Enclosure Assembly	14
Discharge Auger Assembly	15
Discharge Auger Drive Assembly	17
Discharge Auger Clean-out Assembly	19
Discharge Auger Assembly	20
Inlet Door Assembly	21
Diaphragm Valve	21
Dust Collector Filter Cartridge Pulsers And Filters ..	22
Trailer	23
Dust Collector Filter Cartridge Hatch Door	25
Hazard Identification Decals	26
Literature References	28
Optional Accessories	29

PART NUMBERS

Part Numbers	DUSTMASTER® 8,000 CFM ELECTRIC DUST COLLECTOR								
	Filter Cartridge Material						Trailer Mount	Skid Mount	Filter Cartridge Quantity
	None	High Density 85% Cellulose/15% Poly Blend	Reduced Pleat 85% Cellulose/15% Poly Blend	Fire Retardant	HEPA	Spunbond			
10105547	X						X		—
10104316		X					X		9
10105548			X				X		9
10105549				X			X		9
10105550					X		X		9
10105551						X	X		9
10106646	X							X	—
10106647		X						X	9
10106648			X					X	9
10106649				X				X	9
10106550					X			X	9
10106551						X		X	9



SPECIFICATIONS

Performance:	CFM : 4770—8241 W.C. 0—12"
Filter Cartridge Style:	Open Top with Flange, Closed Bottom 9 Required
Filter Cleaning:	Pulse System, 5—15 second intervals Pulse Duration: 200—350 millisecond
Air to Cloth Ratio:	3.39:1 @ 8,000 CFM
Filter Area:	2,363 square feet
Efficiency:	85/15 Blend Filters – 99.8% @ 0.5 micron Reduced Pleat – 99.8% @ 0.5 micron HEPA Filters – 99.99% @ 0.3 micron Fire Retardant Filters – 96.8% @ 2.0 micron Spunbond Filters – 97% @ 3.0 micron
Ducting Connections:	16" I.D., Quantity of Two
Clean-out Ports:	One
Dust Removal Conveyor:	Single 6" Discharge Auger, Electric Motor Drive
Fan:	Backward Inclined, non-overloading, spark resisting
Motor:	25 Horsepower Electric 3-Phase
Electrical System:	460 V, 60 Hz 29 FLA
Air Requirements:	Clean, Dry, Compressed Air 24 CFM @ 90 PSI
Unit Dimensions:	Weight: Approximately 5,509 pounds (empty)
Trailer Model:	Length: 19' 8" Width: 8' Height: 9' 11"
Unit Dimensions:	Weight: Approximately 5,509 pounds (empty)
Skid Model:	Length: 13' 10" Width: 6'8" Height: 10'1"

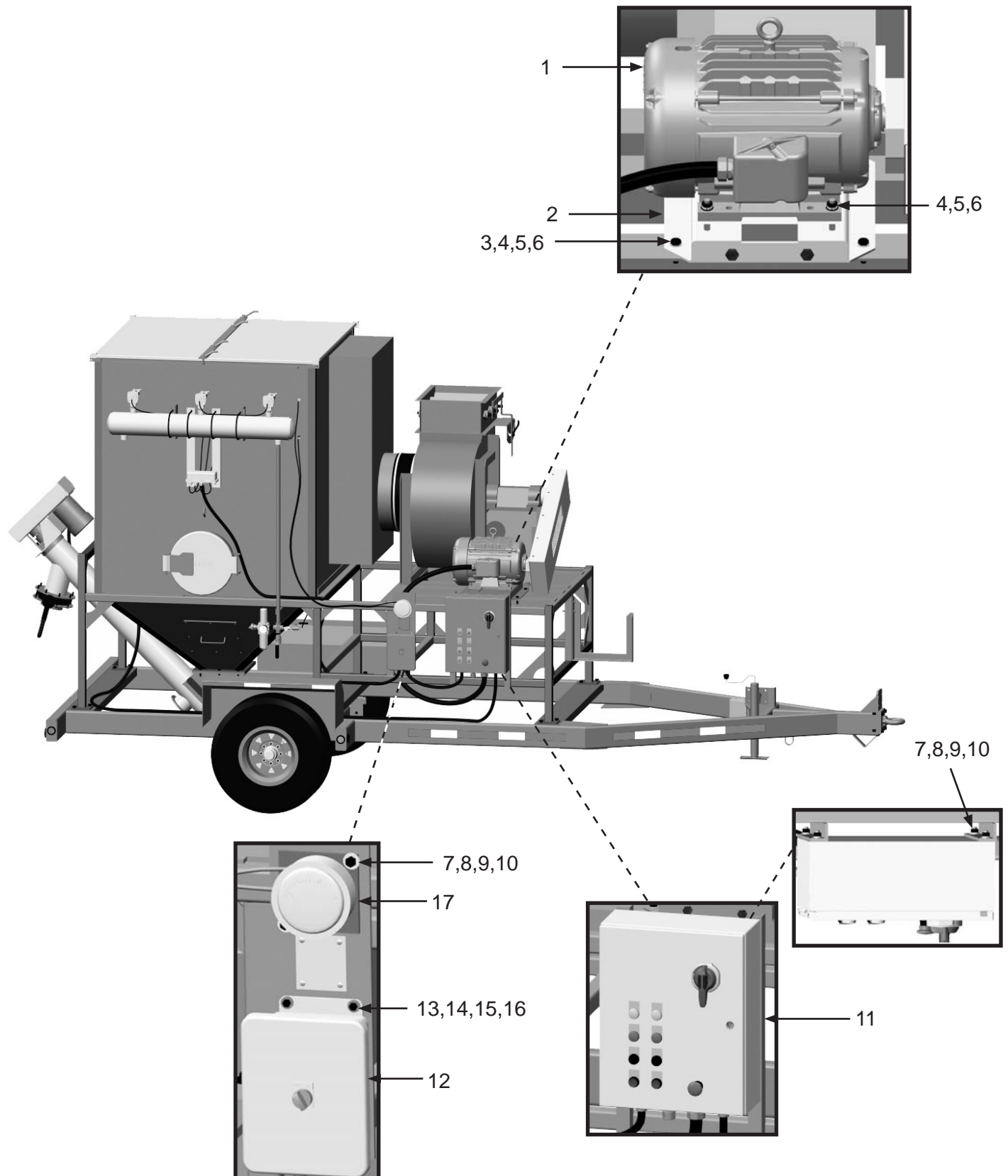
PART NUMBERS AND SCHEMATICS

Front Assembly

Item #	Part #	Description
Fig. 1		
1	10104334	25hp Motor
2	10104335	Adjustable Motor Base
3	1014021	1/2-13 x 1-3/4 Hex Bolt <i>(Four Required)</i>
4	10100674	1/2" Flat Washer <i>(12 Required)</i>
5	1014022	1/2-13 Hex Nut <i>(Eight Required)</i>
6	10100675	1/2" Lock Washer <i>(Eight Required)</i>
7	1011747	3/8-16 x 1" Bolt <i>(Eight Required)</i>
8	10101936	3/8" Lock Washer – Zinc <i>(Eight Required)</i>
9	10101938	3/8-16 Hex Nut – Galvanized <i>(Eight Required)</i>
10	10101942	3/8" Flat Washer <i>(12 Required)</i>
11	10104356	Control Panel for Dustmaster® 8,000 CFM Electric Dust Collector
12	10103848	4 Ch. 12-Volt Timer Board with Enclosure
13	10101937	1/4-20 x 1" Grade 5 Bolt <i>(Four Required)</i>
14	10101940	1/4" Flat Washer <i>(Eight Required)</i>
15	1012153	1/4" Lock Washer <i>(Four Required)</i>
16	10101347	1/4-20 Hex Nut <i>(Four Required)</i>
17	10103259	Magnehelic Differential Pressure Gauge
—	1015590	8/4 SO Power Cord — Black <i>(Per Foot)</i>
—	10104364	12/4 SJ Power Cord <i>(Per Foot)</i>

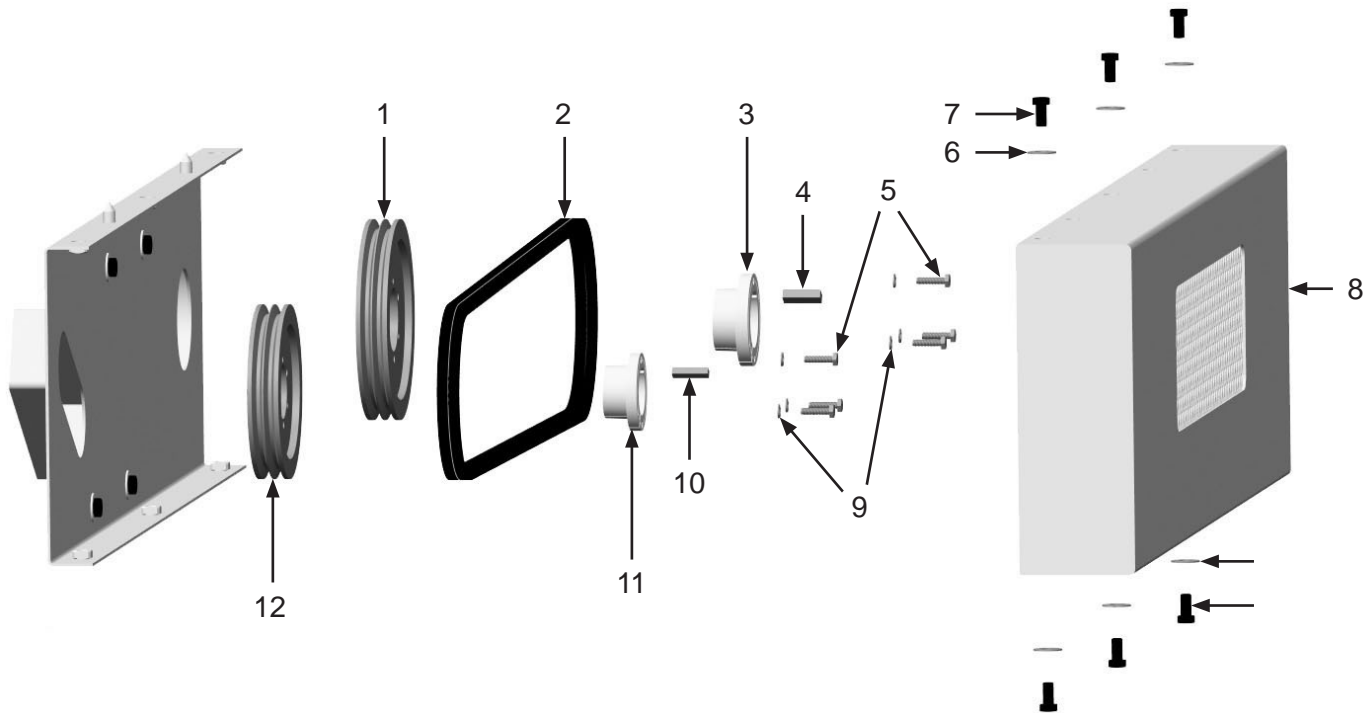
PART NUMBERS AND SCHEMATICS

Figure 1: Front Assembly



PART NUMBERS AND SCHEMATICS

Figure 2: Fan Belt Assembly



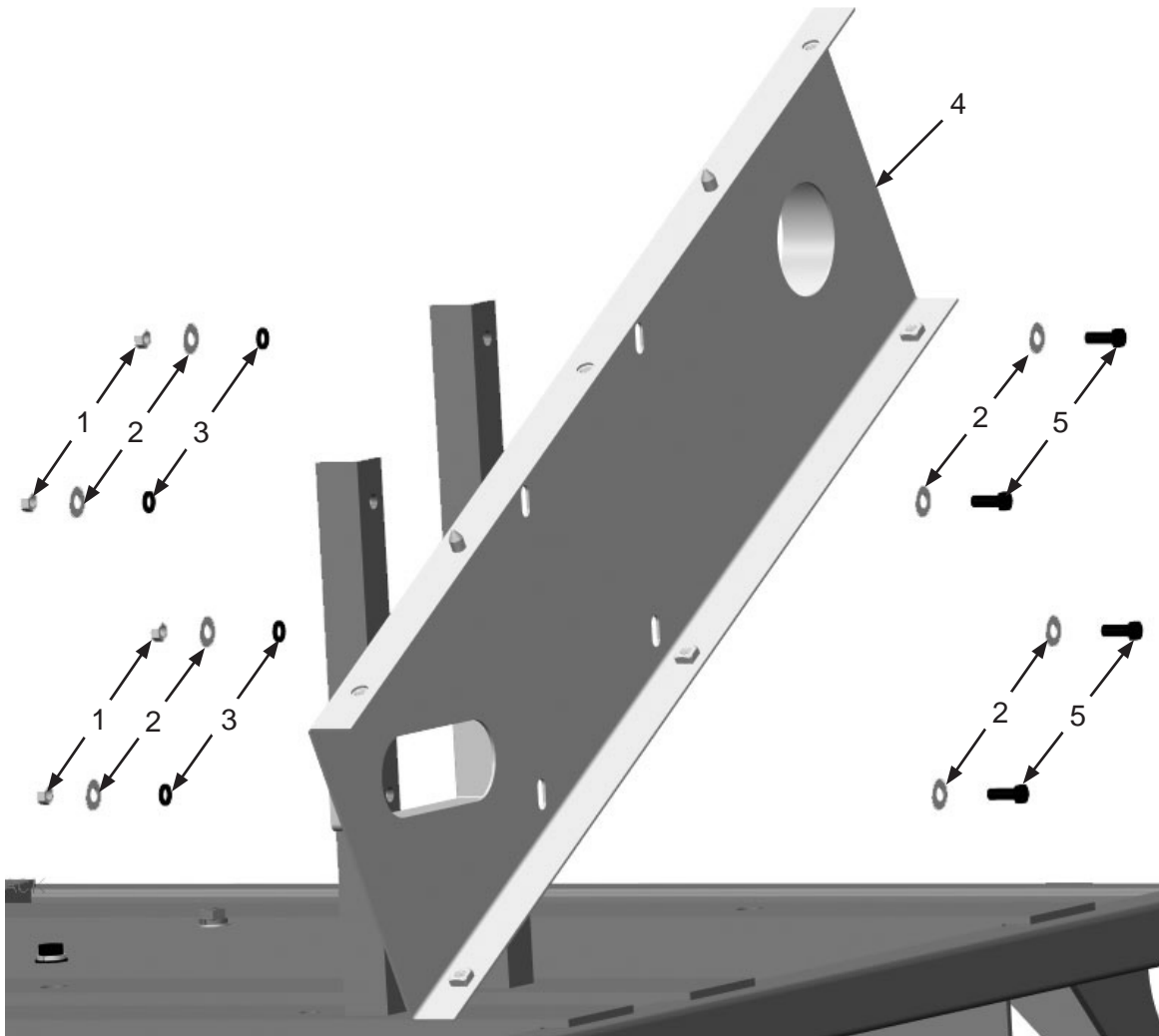
Item #	Part #	Description
--------	--------	-------------

Fig. 2

1	10104329	2/3 Sheave 6.9"
2	10104326	2/3 750 Banded Belt
3	10104330	Bushing 1-15/16" Bore <i>Includes Item #'s: 5 and 9 (Three Each)</i>
4	10104362	1/2" x 5/16" Key Cut
5	10101937	1/4-20 x 1" L Grade 5 Bolt <i>(Six Required)</i>
6	10101942	3/8" Flat Washer <i>(Six Required)</i>
7	10103400	3/8-16 x 3/4" Bolt <i>(Six Required)</i>
8	10104320	Belt Guard Cover for Dustmaster® 8,000 CFM Electric Dust Collector
9	1012153	1/4 Lock Washer <i>(Six Required)</i>
10	10104361	3/8" x 1/4" Key Cut
11	10104328	Bushing 1-5/8" Bore <i>Includes Item #'s: 5 and 9 (Three Each)</i>
12	10104327	2/3 Sheave 6.00"

PART NUMBERS AND SCHEMATICS

Figure 3: Fan Belt Guard Back Assembly



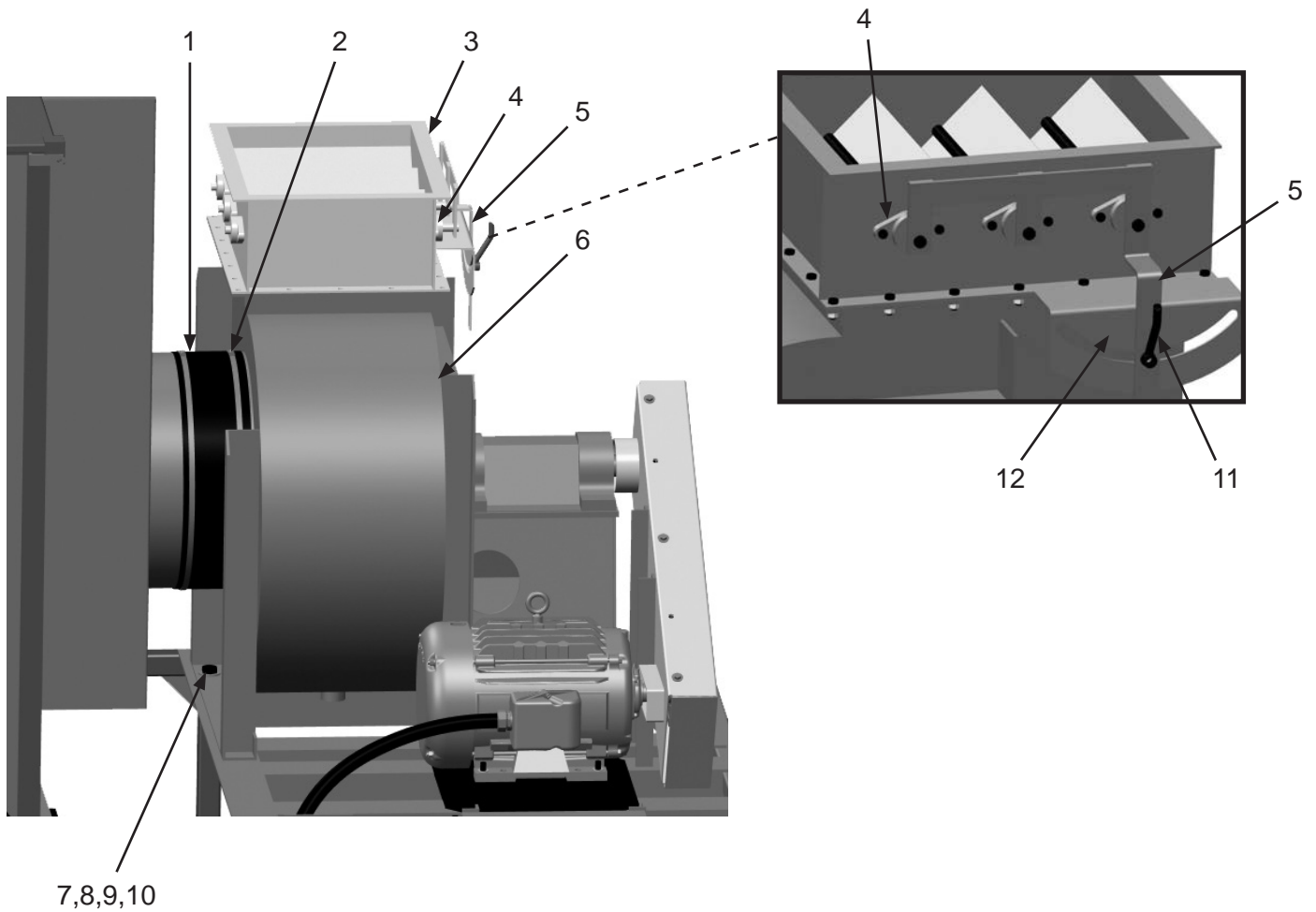
Item #	Part #	Description
--------	--------	-------------

Fig. 3

1	10101938	3/8-16 Galvanized Hex Nut (<i>Four Required</i>)
2	10101942	3/8" Galvanized Flat Washer (<i>Four Required</i>)
3	10101936	3/8" Zinc Lock Washer (<i>Four Required</i>)
4	10104317	Belt Guard Back
5	1011747	3/8-16 x 1" Bolt (<i>Four Required</i>)

PART NUMBERS AND SCHEMATICS

Figure 4: Fan Assembly



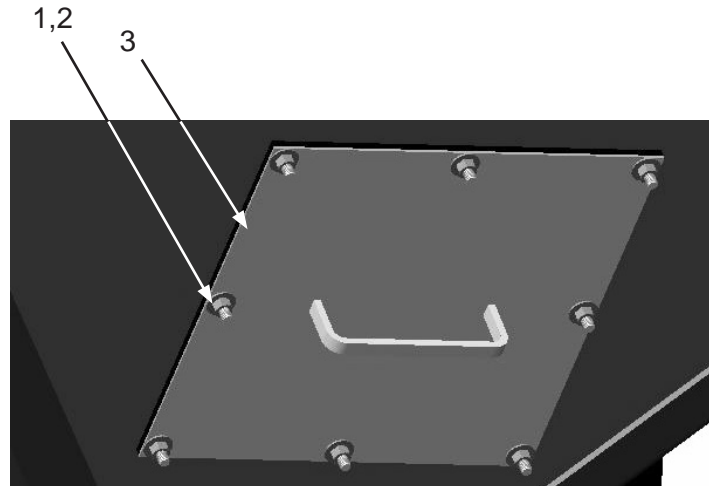
Item #	Part #	Description
--------	--------	-------------

Fig. 4

1	10103962	Connection Rubber Gasket
2	10103416	Adjustable Clamp Fastener <i>(Two Required)</i>
3	10104332	Fan Damper
4	10105775	Damper Bearing <i>(Six Required)</i>
5	10105774	Damper Handle
6	10104331	BI-200 Fan
7	10103417	3/4-10 UNC x 1-3/4" Grade 8 Bolt <i>(Six Required)</i>
8	10103418	3/4" Washer <i>(12 Required)</i>
9	10103420	3/4-10 UNC Grade 8 Nut <i>(Six Required)</i>
10	10103419	3/4" Lock Washer <i>(Six Required)</i>
11	10103395	Handle 1/2-13 Zinc Plated
12	1091140	Hazard Identification Decal
—	10105776	Damper Hardware Kit <i>(Includes: 1/2 x 1-3/4 Bolt, 1/2" Star Washer, 1/2" Flat Washer, 1/2" Lock Washer)</i>

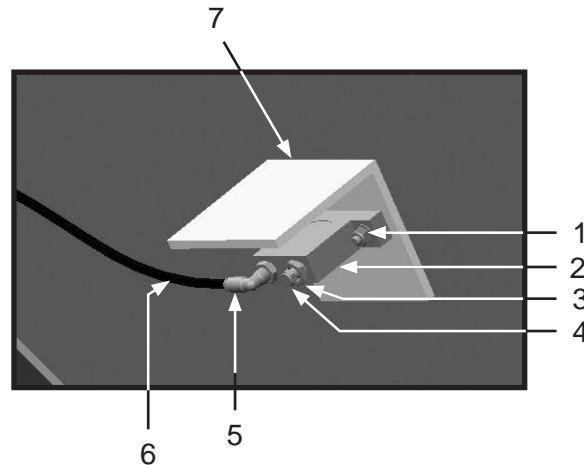
PART NUMBERS AND SCHEMATICS

Figure 5: Access Panel Assembly



Item #	Part #	Description
Fig. 5		
1	10101938	3/8-16 Galvanized Hex Nut (<i>Eight Required</i>)
2	10101942	3/8" Flat Washer (<i>Eight Required</i>)
3	10103792	Access Panel Door

Figure 6: Pneumatic Ball Vibrators



Item #	Part #	Description
Fig. 6		
1	10101939	1/4-20 Stainless Steel Lock Nut with Nylon Insert (<i>Two Required</i>)
2	10103258	Pneumatic Ball Vibrator
3	20PFHA24SB0402	1/4" x 1/8" Reducing Bushing
4	1012905	1/8" Breather Muffler
5	20PFBA31095614	1/4" Tube x 1/4" NPT 90° Fitting
6	10103322	1/4" I.D. Black Urethane Tubing (<i>Per Foot</i>)
7	10103609	Vibrator Shield

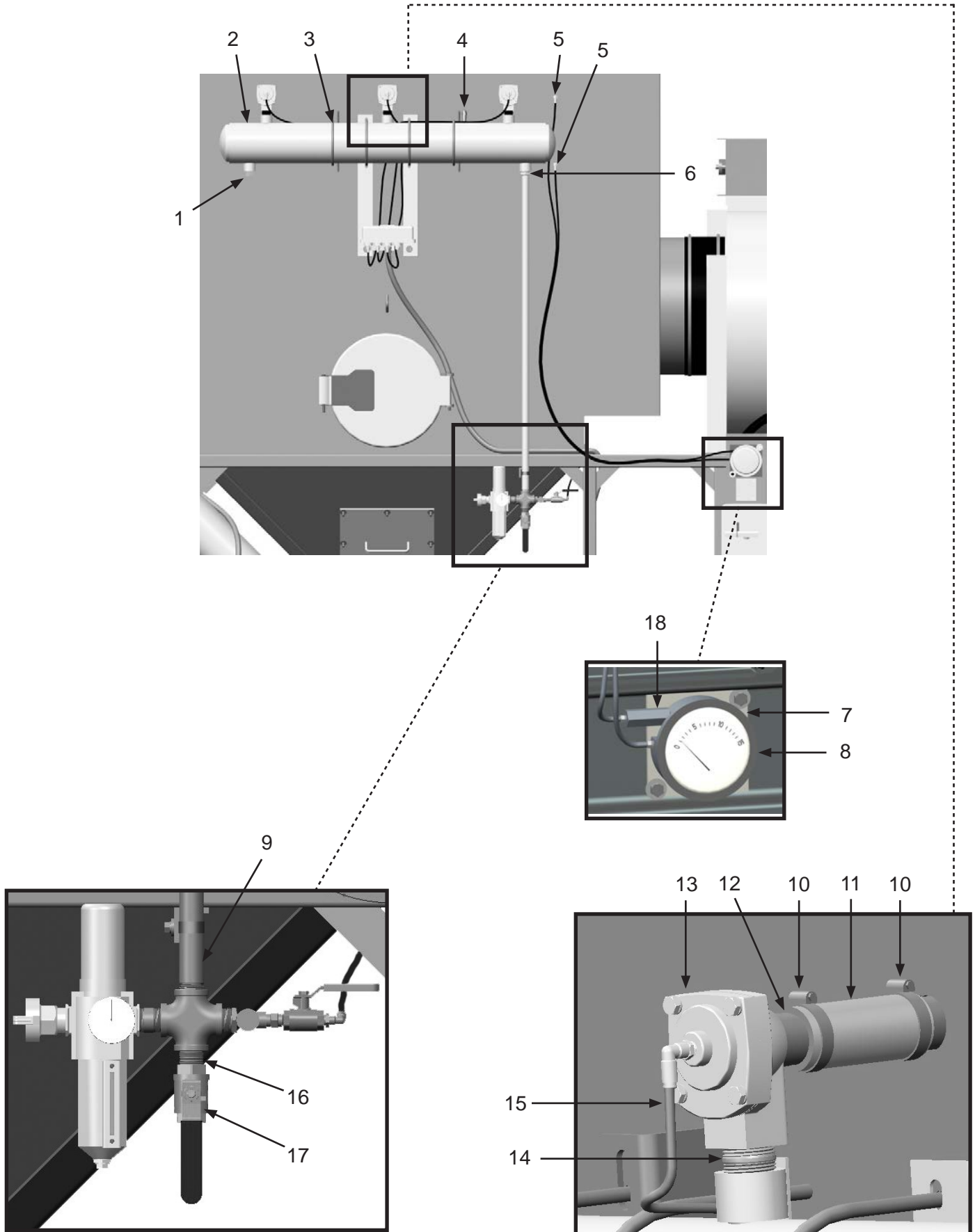
PART NUMBERS AND SCHEMATICS

Pulser System Assembly

Item #	Part #	Description
Fig. 7		
1	1011901	1" Galvanized Square Head Plug
2	10103789	3 Pipe Header Tube
3	10103394	3/8-16 x 6" U-Bolt Assembly <i>(Four Required)</i>
4	1028607	1/4" NPT Pressure Relief Valve – 125 PSI
5	20PFBA31095614	1/4" Tube x 1/4" NPT 90° Fitting <i>(Two Required)</i>
6	20PFHA24SB1612	1" x 3/4" Reducing Bushing
7	10103608	Magnehelic Differential Pressure Gauge Mounting Bracket
8	10103259	Magnehelic Differential Pressure Gauge Assembly <i>Includes Mounting Hardware</i>
9	10105197	3/4" x 48" Pipe Nipple
10	10104136	T-Bolt Clamp for 1-9/16" to 1-11/16" O.D. Hose <i>(Six Required)</i>
11	10103654	1-1/4" I.D. Marine Hose – 100 PSI <i>(Per Foot)</i>
12	10105207	1" x 3" Toe Nipple <i>(Three Required)</i>
13	10103255	1" Diaphragm Valve <i>(Three Required)</i>
14	10103318	1" x 2" Pipe Nipple <i>(Three Required)</i>
15	10103322	1/4" O.D. Black Urethane Tubing <i>(Per Foot)</i>
16	1011213	3/4" NPT Close Nipple - Galvanized
17	10L8074C	3/4" Full Port Ball Valve
18	10108373	1/8" NPT INline Air Filter
—	10103954	1" Diaphragm Valve Service Kit <i>(Not Shown)</i>

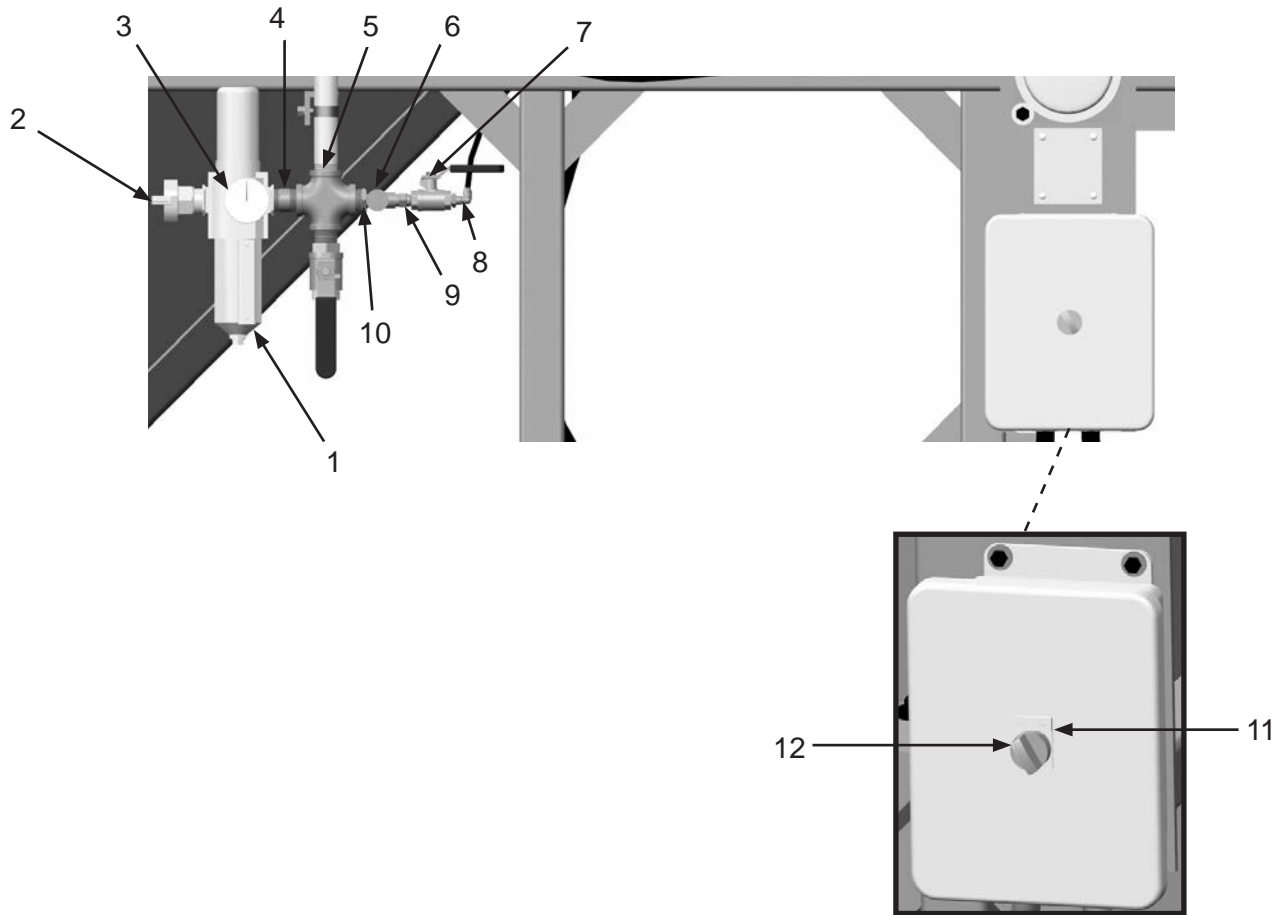
PART NUMBERS AND SCHEMATICS

Figure 7: Pulser System Assembly



PART NUMBERS AND SCHEMATICS

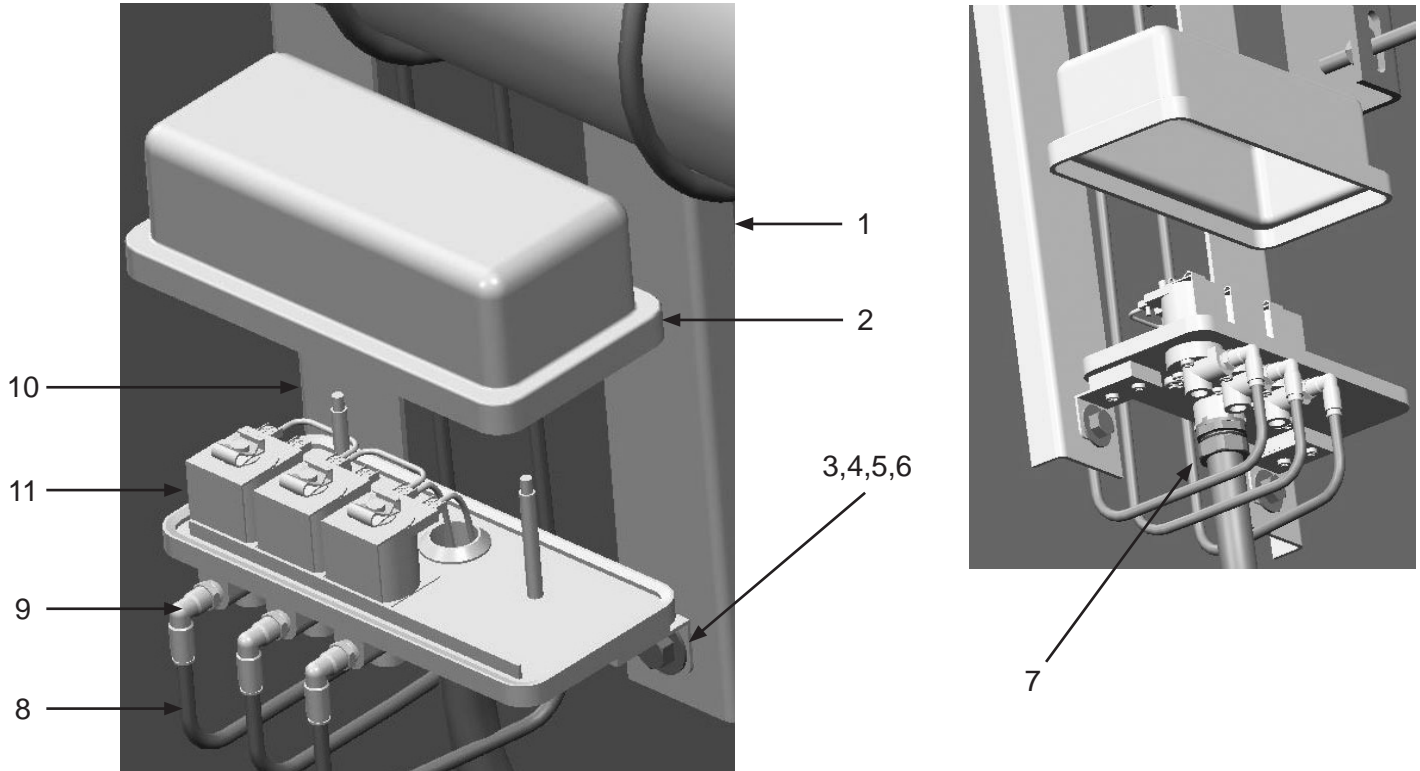
Figure 8: Pulser Regulator and Timer Assembly



Item #	Part #	Description
Fig. 8		
1	10103257	Filter/Regulator
2	10ME1	3/4" Male 2-Lug Coupling
3	1028606	Pressure Gauge 160 PSI 1/4" Back
4	10103317	3/4" x 2" Pipe Nipple
5	10105198	3/4" NPT Galvanized Cross
6	10103292	1/4" Needle Valve
7	1080050	1/4" Ball Valve
8	20PFBA31095614	1/4" Tube x 1/4" NPT 90° Fitting
9	1017019	1/4" x 1/4" Hex Nipple
10	20PFHA24SB1204	3/4" x 1/4" Reducing Bushing
11	10103414	On/Off Name Plate
12	10103305	2-Way Selector Switch
—	10103950	Filter/Regulator Service Kit
—	10103951	Filter Element (<i>Not Shown</i>)

PART NUMBERS AND SCHEMATICS

Figure 9: Pulser Solenoid Enclosure Assembly



Item #	Part #	Description
--------	--------	-------------

Fig. 9

1	10102970	Solenoid Enclosure Mount – Right
2	10103849	Solenoid Pilot Valve Enclosure
3	10101936	3/8" Zinc Lock Washer <i>(Two Required)</i>
4	10101938	3/8-16 Galvanized Hex Nut <i>(Two Required)</i>
5	10101942	3/8" Galvanized Flat Washer <i>(Four Required)</i>
6	1011747	3/8-16 x 1" Bolt <i>(Two Required)</i>
7	20RST50	Straight Liquid Tite Connection Fitting
8	10103322	1/4" O.D. Black Urethane Tubing <i>(Per Foot)</i>
9	20100579	1/4" O.D. Tube x 1/8" NPT Swivel <i>(Three Required)</i>
10	10102969	Solenoid Enclosure Mount – Left
11	10103955	Solenoid Valve <i>(Three Required)</i>
—	10103956	Solenoid Coil <i>(One Required per Solenoid)</i>
—	10103957	Solenoid Service Kit <i>(Includes: O-ring, Plunger, Spring, Ferrule)</i>

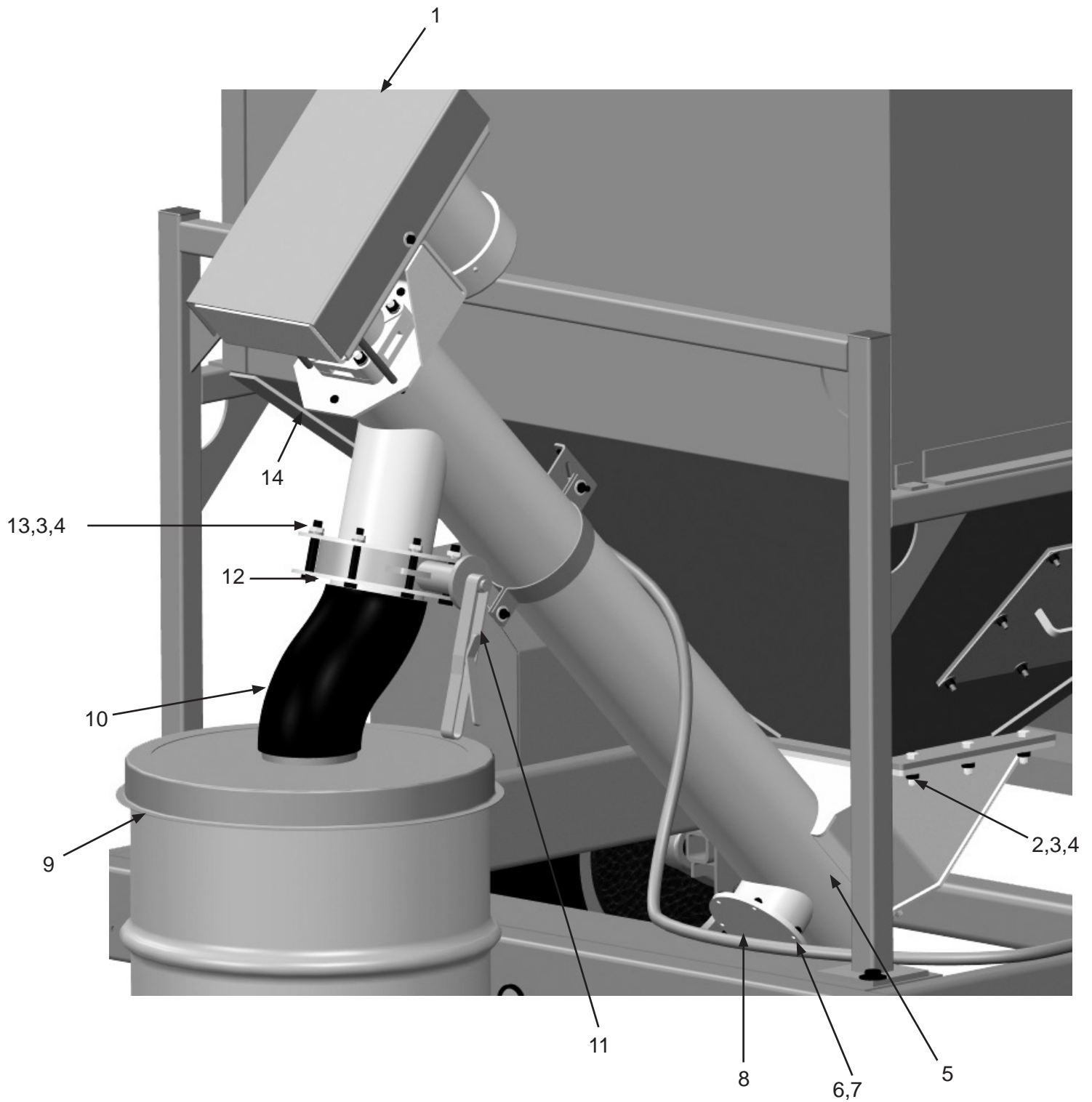
PART NUMBERS AND SCHEMATICS

Discharge Auger Assembly

Item #	Part #	Description
Fig. 10		
1	10104287	Discharge Chain Cover
2	10100674	1/2" Flat Washer <i>(22 Required)</i>
3	10100675	1/2" Lock Washer <i>(14 Required)</i>
4	1014022	1/2-13 Hex Nut <i>(14 Required)</i>
5	10104277	Discharge Auger Tube
6	10101346	5/16-18 x 3/4" Grade 5 Bolt <i>(Six Required)</i>
7	1035046	5/16-18 Nut <i>(Six Required)</i>
8	10103235	Auger Clean-out Cover
9	10103650	Discharge Collection Drum Cover <i>(Optional)</i>
10	10103777	6" Flexible Discharge Hose <i>(Per Foot) (Optional)</i>
11	10103302	6" Series Wafer Butterfly Valve
12	10102971	Auger Discharge Drop Flange
13	10102703	1/2-13 x 3-1/2" Grade 5 Bolt <i>(Eight Required)</i>
14	10104195	Discharge Auger Motor Mounting Bracket
—	10103880	White Conspicuity Tape <i>(Per Inch)</i>
—	10103881	Red Conspicuity Tape <i>(Per Inch)</i>

PART NUMBERS AND SCHEMATICS

Figure 10: Discharge Auger Assembly



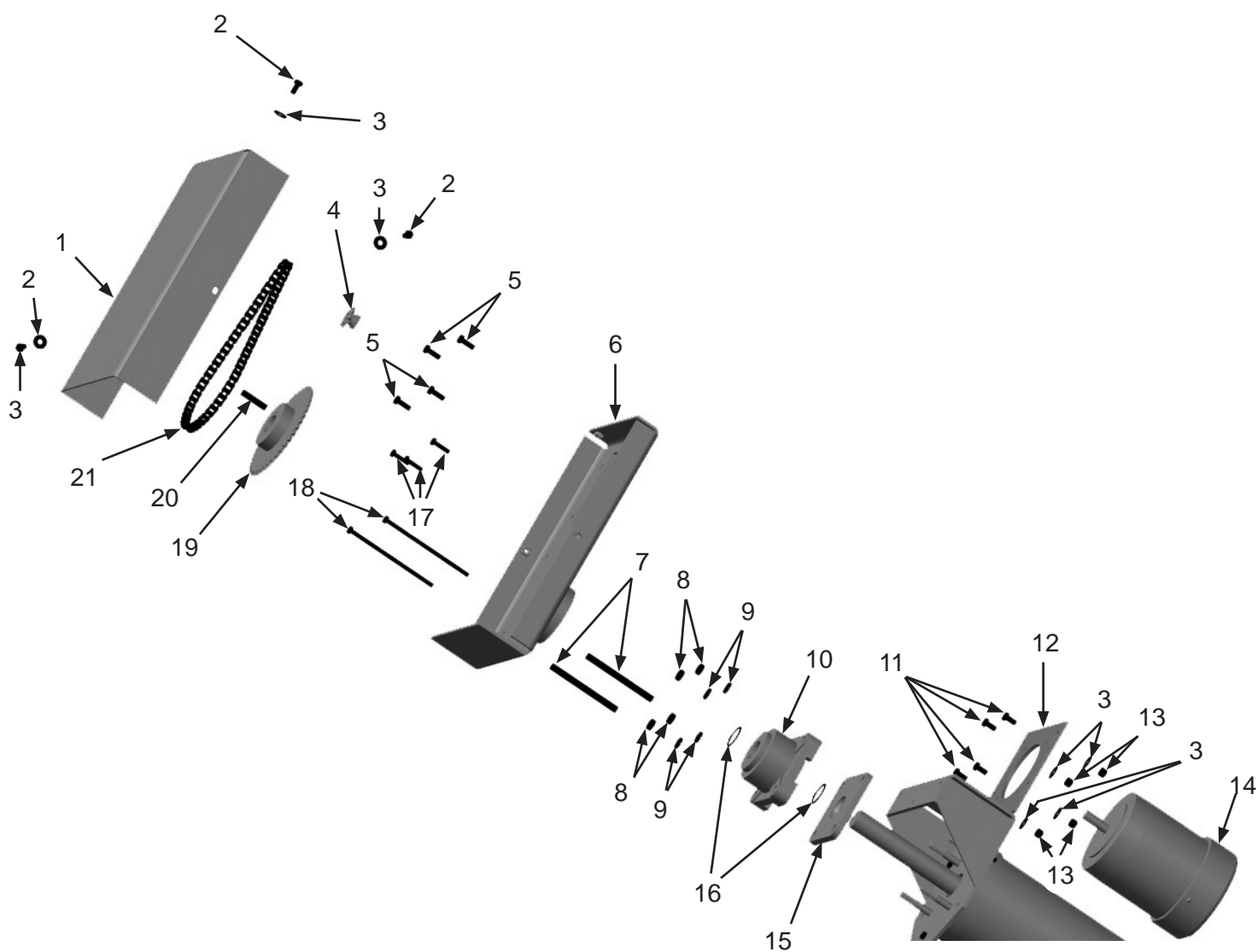
PART NUMBERS AND SCHEMATICS

Discharge Auger Drive Assembly

Item #	Part #	Description
Fig. 11		
1	10104287	Chain Cover
2	10103400	3/8-16 x 3/4" Bolt (<i>Three Required</i>)
3	1014241	3/8" Flat Washer (<i>Seven Required</i>)
4	10104288	9T #40 Sprocket - 5/8" Bore (Includes Hardware)
5	1011747	3/8-16 x 1" Bolt (<i>Four Required</i>)
6	10104284	8K Chain Cover Base Weldment
7	10104206	Motor Mount Spacer (<i>Two Required</i>)
8	1014022	1/2-13 Hex Nut (<i>Four Required</i>)
9	10100675	1/2" Lock Washer (<i>Four Required</i>)
10	10102903	Thrust Bearing
11	10103400	3/8-16 x 3/4" Bolt (<i>Four Required</i>)
12	10104286	Sliding Motor Mount
13	20100138	3/8-16 Hex Lock Nut Zinc (<i>Four Required</i>)
14	10104290	3/4 Hp Electric Motor
15	10102902	Seal Plate
16	10103605	Snap Ring For 1.5" Shaft (<i>Two Required</i>)
17	1014019	5/16-18 x 1-1/4" Hex Bolt (<i>Three Required</i>)
18	10104201	5/16-18 x 7" Bolt Zinc (<i>Two Required</i>)
19	10104289	45T #40 Sprocket - 1-1/2" Bore (Includes Hardware)
20	10103641	3/8 Key Cut
21	10104344	#40 Chain

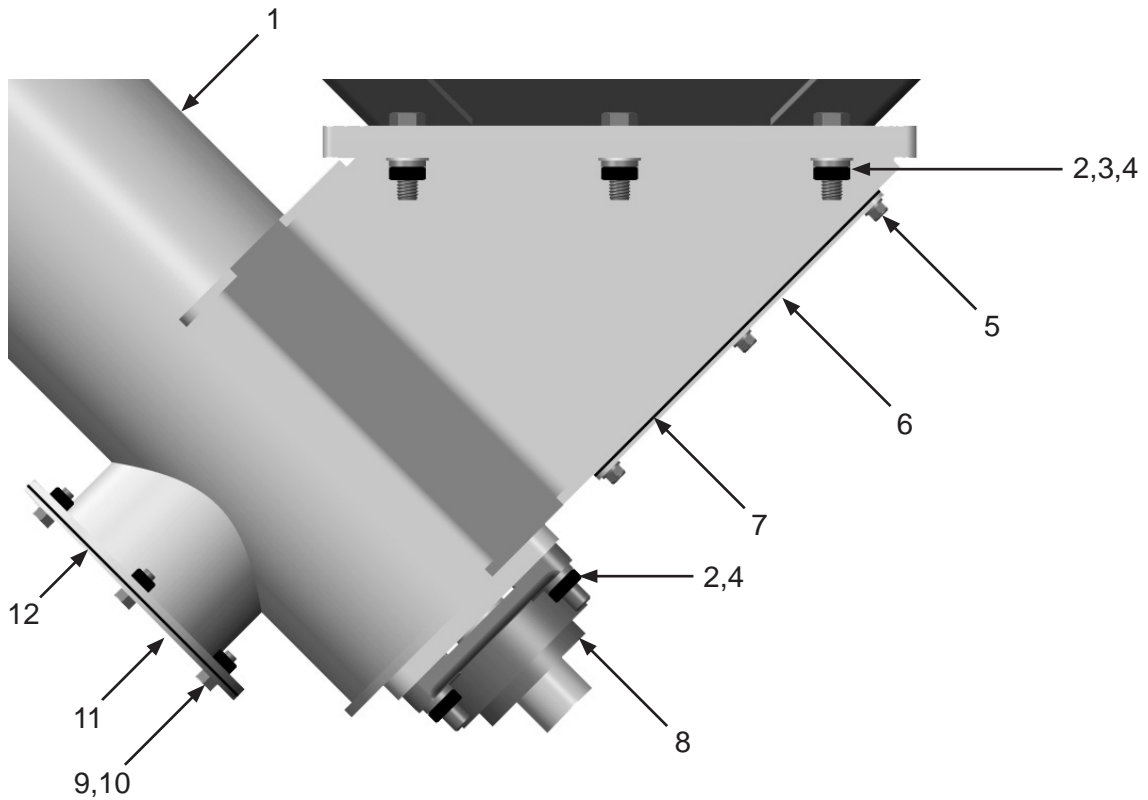
PART NUMBERS AND SCHEMATICS

Figure 11: Discharge Auger Drive Assembly



PART NUMBERS AND SCHEMATICS

Figure 12: Discharge Auger Clean-out Assembly



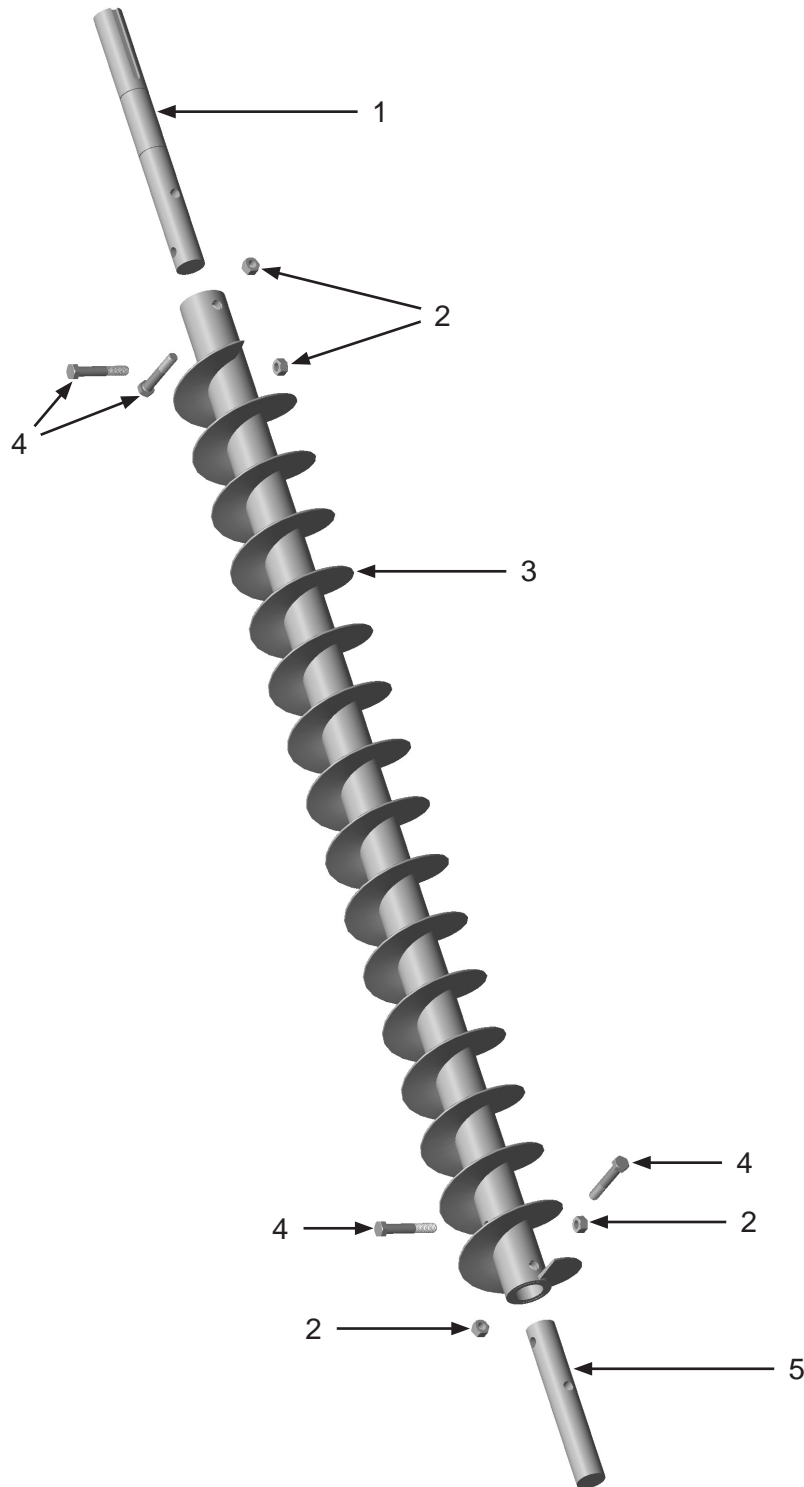
Item #	Part #	Description
--------	--------	-------------

Fig. 12

1	10104276	Discharge Auger Weldment
2	10100675	1/2" Lock Washer (<i>10 Required</i>)
3	10100674	1/2" Flat Washer (<i>Six Required</i>)
4	1014022	1/2-13 Hex Nut (<i>10 Required</i>)
5	10101939	1/4-20 Stainless Steel Lock Nut with Nylon (<i>Eight Required</i>)
6	10104283	Clean Out Cover
7	10104336	Clean Out Cover Gasket
8	10102880	Auger Lower Bearing Assy
9	10101346	5/16-18 x 3/4" Grade 5 Bolt (<i>Six Required</i>)
10	1035046	5/16-18 Nut (<i>Six Required</i>)
11	10103235	Auger Clean-Out Cover
12	10103716	Auger Clean Out Gasket

PART NUMBERS AND SCHEMATICS

Figure 13: Discharge Auger Assembly



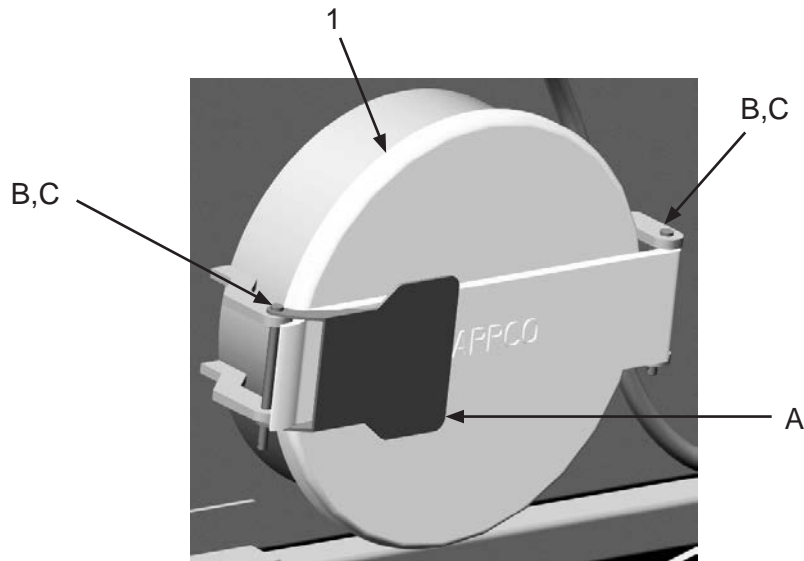
Item #	Part #	Description
--------	--------	-------------

Fig. 13

1	10103306	Drive Shaft
2	1014022	1/2-13 Hex Nut (<i>Four Required</i>)
3	10102883	58" x 6" Half Pitch Auger
4	10103401	1/2-13 x 3" Galvanized Bolt (<i>Four Required</i>)
5	10102910	Auger Shaft End

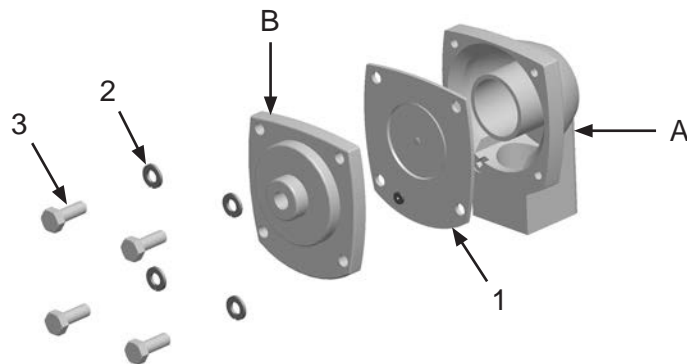
PART NUMBERS AND SCHEMATICS

Figure 14: Inlet Door Assembly



Item #	Part #	Description
Fig. 14		
1	10104179	16" Inlet Door Assembly – Complete <i>(Two Required)</i> <i>Includes Items: A,B,C</i>
—	10105340	Inlet Door Gasket <i>(Two Required)</i>
—	10104408	Pin <i>(Two Required)</i>

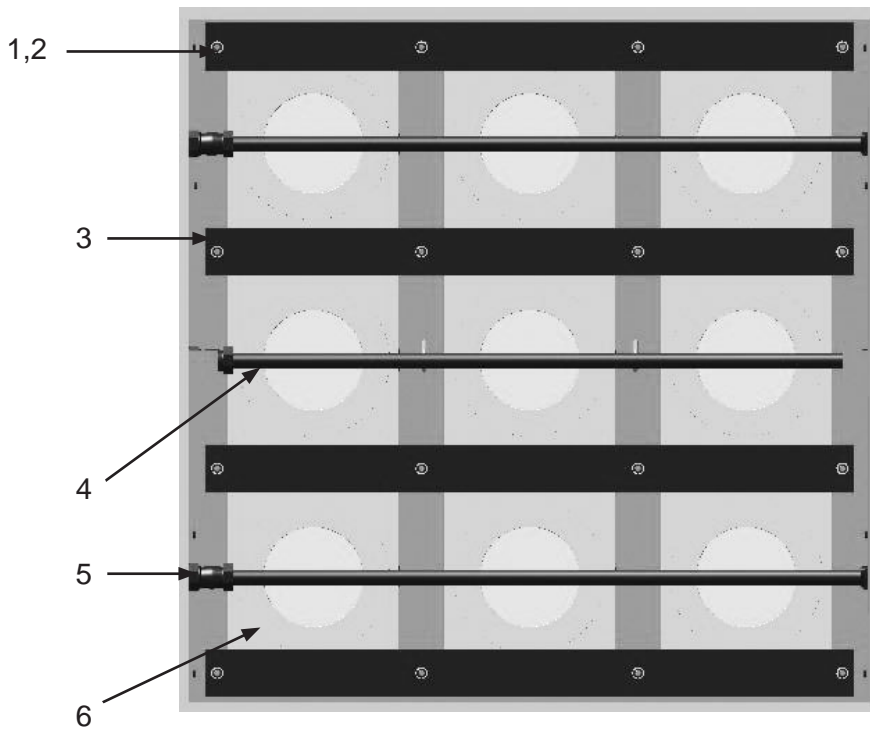
Figure 15: Diaphragm Valve



Item #	Part #	Description
Fig. 15		
—	10103255	1" Diaphragm Valve – Complete <i>(Three Required)</i> <i>Includes Items: A,B,1,2,3</i>
1	10103954	1" Diaphragm Valve Service Kit
2	1012153	1/4" Lock Washer <i>(Four Required)</i>
3	20101232	M6 x 1 x 14 HHCS <i>(Four Required)</i>

PART NUMBERS AND SCHEMATICS

Figure 16: Dust Collector Filter Cartridge Pulsers And Filters



Item #	Part #	Description
Fig. 16		
1	10100674	1/2" Flat Washer (16 Required)
2	1014022	1/2" Hex Nut (16 Required)
3	10103823	Filter Bolt-Down (Four Required)
4	10103791	Pulser System Blowpipe (Three Required)
5	10102599	Compression Coupling Assembly (Three Required)
6	10102033	85/15 Blend Filters – 99.8% @ 0.5 micron (Nine Required) (Optional)
	10105561	Reduced Pleat – 99.8% @ 0.5 micron (Nine Required) (Optional)
	1010005946	HEPA Filters – 99.99% @ 0.3 micron (Nine Required) (Optional)
	10105562	Fire Retardant Filters – 96.8% @ 2.0 micron (Nine Required) (Optional)
	10105563	Spunbond Filters – 97% @ 3.0 micron (Nine Required) (Optional)

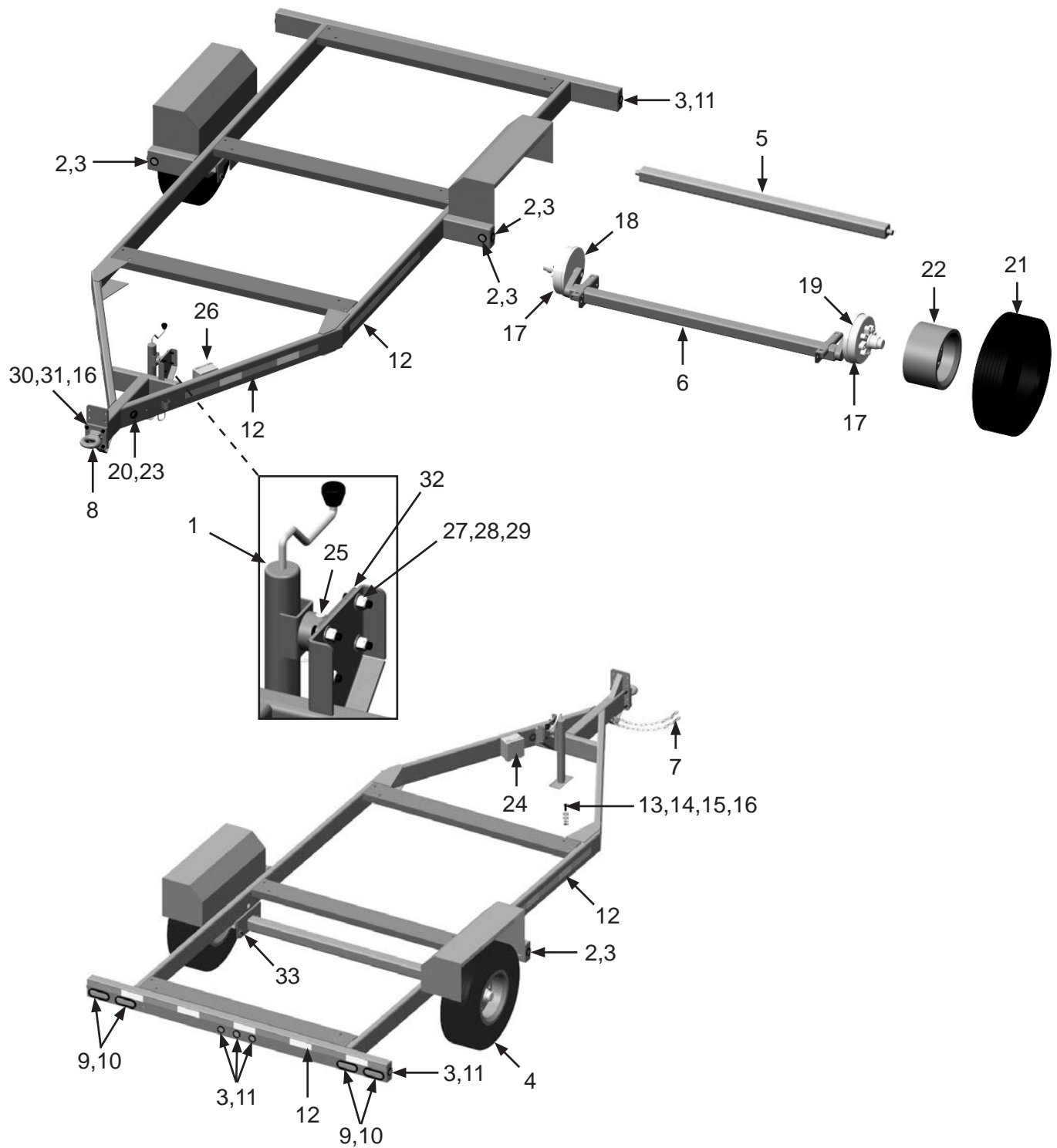
PART NUMBERS AND SCHEMATICS

Trailer

Item #	Part #	Description
Fig. 17		
—	10104333	Highway Trailer
1	10104141	7,000 # Heavy Duty Drop Leg Side Mount Top-Wind Jack
2	10104087	2" Round LED Amber Clearance Light <i>(Four Required)</i>
3	10104088	2" Round Rubber Grommet <i>(Nine Required)</i>
4	10104143	215/75R17.5 16-Ply Tire with 17.5" 8-Hole Mod Rim <i>(Two Required)</i>
5	10105905	Axle Beam/Tube No Hubs or Springs
6	10105904	8,000 # Axle With Electric Brakes, Complete With Hubs And Springs 88" HF x 70" OB
7	10104769	3/8" x 41" Safety Chain with Hook
8	10104079	Pintle Hitch with Flat Plate
9	10104085	Oval Rubber Grommet <i>(Four Required)</i>
10	10104084	Oval LED Red Tail Light <i>(Four Required)</i>
11	10104086	2" Round LED Red Clearance Light <i>(Five Required)</i>
12	10103879	2" x 6" x 6" Red/White Conspicuity Tape
13	10103397	5/8-11 x 2" GR8 Bolt - Zinc <i>(12 Required)</i>
14	10103399	5/8" Lock Washer <i>(12 Required)</i>
15	10103393	5/8-11 GR8 Nut <i>(12 Required)</i>
16	10103398	5/8" Flat Washer <i>(28 Required)</i>
17	10105734	Axle Hub Only - No Bearings or Seal <i>(Two Required)</i>
18	10105738	Left-Hand Electric Brake Assembly <i>(Two Required)</i>
19	10105739	Right-Hand Electric Brake Assembly <i>(Two Required)</i>
20	10105825	Electrical Break Away Grommet
21	10105735	Hercules Lt215/75R17.5 16-Ply Tire Only <i>(Four Required)</i>
22	10105736	17.5" 8-Hole Rim - No Tire <i>(Four Required)</i>
23	10105829	Cable With Plug
24	10105826	Redline 12V - 5AH Battery Sealed
25	10104709	1/2" x 3-1/2" Pin
26	10104081	Breakaway Kit
27	10105874	1/2-13 x 1-1/2" Grade 5 Bolt <i>(Four Required)</i>
28	20100124	1/2-13 Nylon Lock Nut <i>(Four Required)</i>
29	10100674	1/2" Flat Washer <i>(Eight Required)</i>
30	10105746	5/8" x 2-1/2" Grade 8 Bolt <i>(Four Required)</i>
31	10105747	5/8" Reverse Lock Nut <i>(Four Required)</i>
32	10105876	Jack Plate with Four Holes
33	10105875	Weld on Mounting Bracket with Hardware - Axle Mount <i>(Four Required)</i> - 9/16-18 x 1-1/2" Grade 5 Hex Bolt <i>(Six Required)</i> - 9/16" Flat Washer <i>(12 Required)</i> - 9/16" Hex Nut <i>(Six Required)</i>
—	10104142	Wire Harness - Complete <i>(Front, Middle & Rear)</i>
—	10105783	Breakaway Switch with LED
—	10105784	Replacement Pin and Cable for 10105783
—	109V582	Operator's Manual - Behnke Trailer

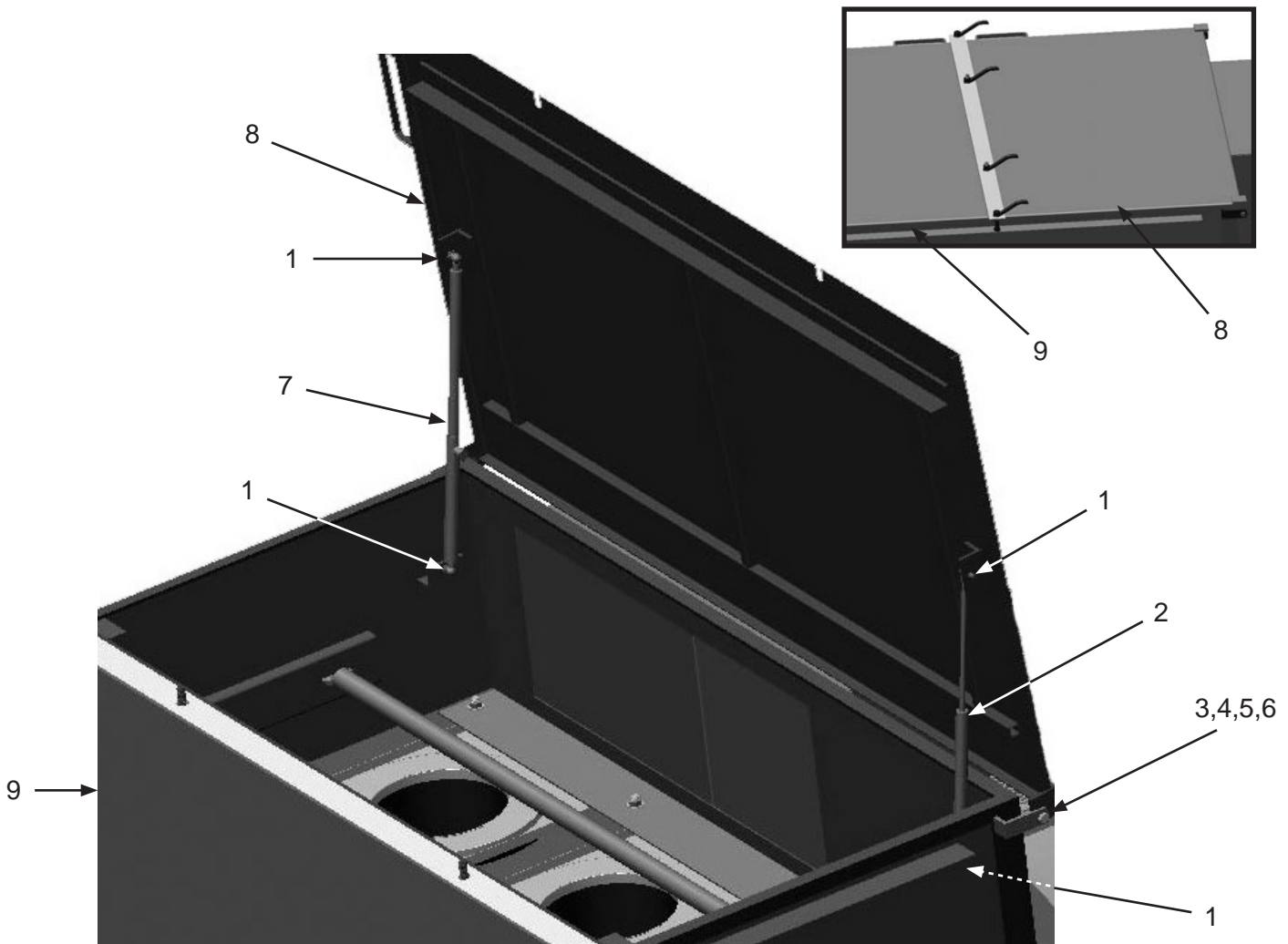
PART NUMBERS AND SCHEMATICS

Figure 17: Trailer



PART NUMBERS AND SCHEMATICS

Figure 18: Dust Collector Filter Cartridge Hatch Door



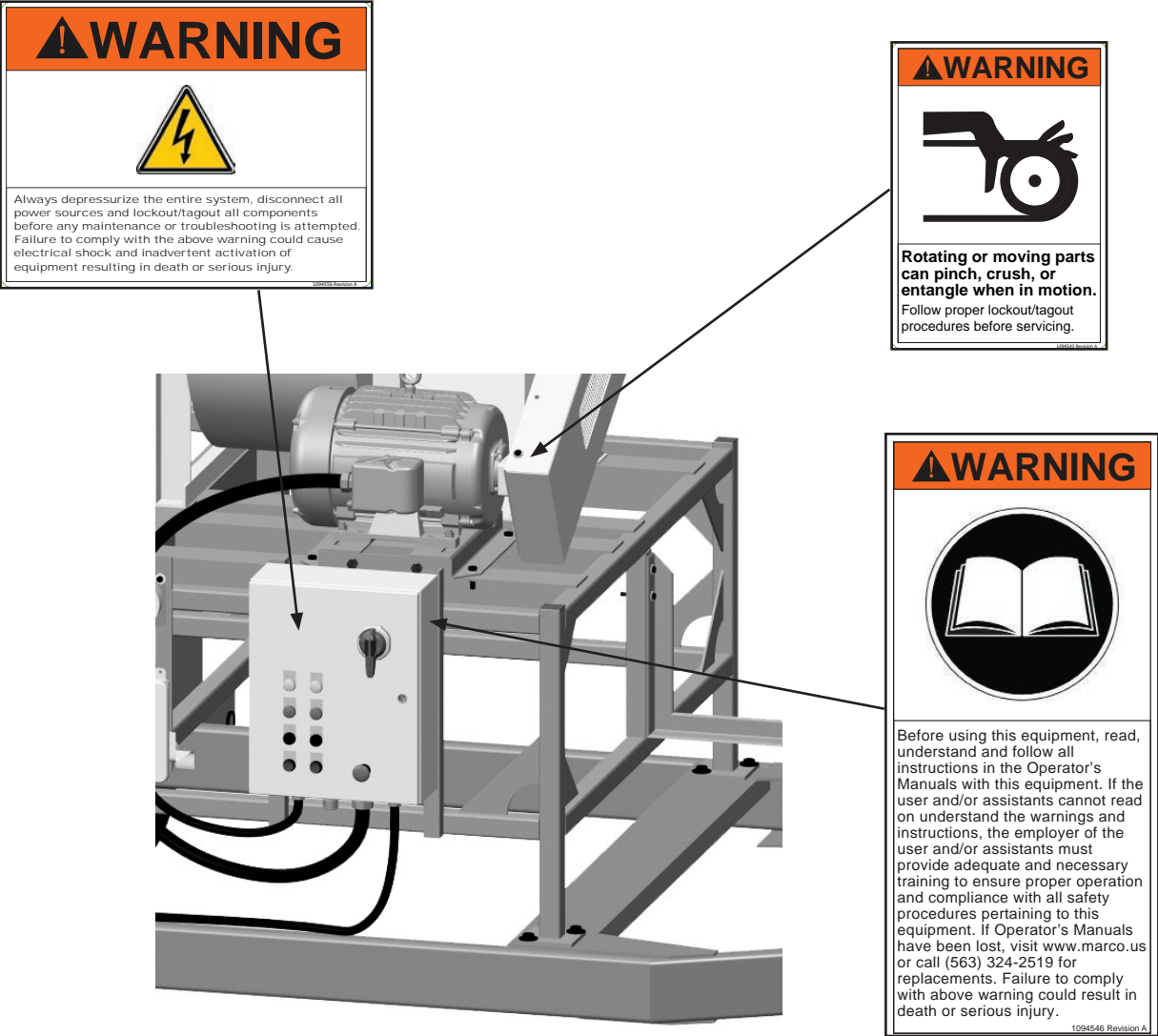
Item #	Part #	Description
--------	--------	-------------

Fig. 18

1	1035046	5/16-18 Hex Nut (<i>Four Required</i>)
2	10103454	Non-Locking Gas Spring
3	10101059	3/8-16 X 1-1/4" A307 Bolt - Galvanized (<i>Two Required</i>)
4	10101942	3/8" Flat Washer (<i>Four Required</i>)
5	10101936	3/8" Lock Washer - Zinc (<i>Two Required</i>)
6	10101938	3/8-16 Hex Nut (<i>Two Required</i>)
7	10103455	Locking Gas Spring
8	10103802	Front Hatch Door
9	10103798	Rear Hatch Door

Quantities specified are per hatch opening

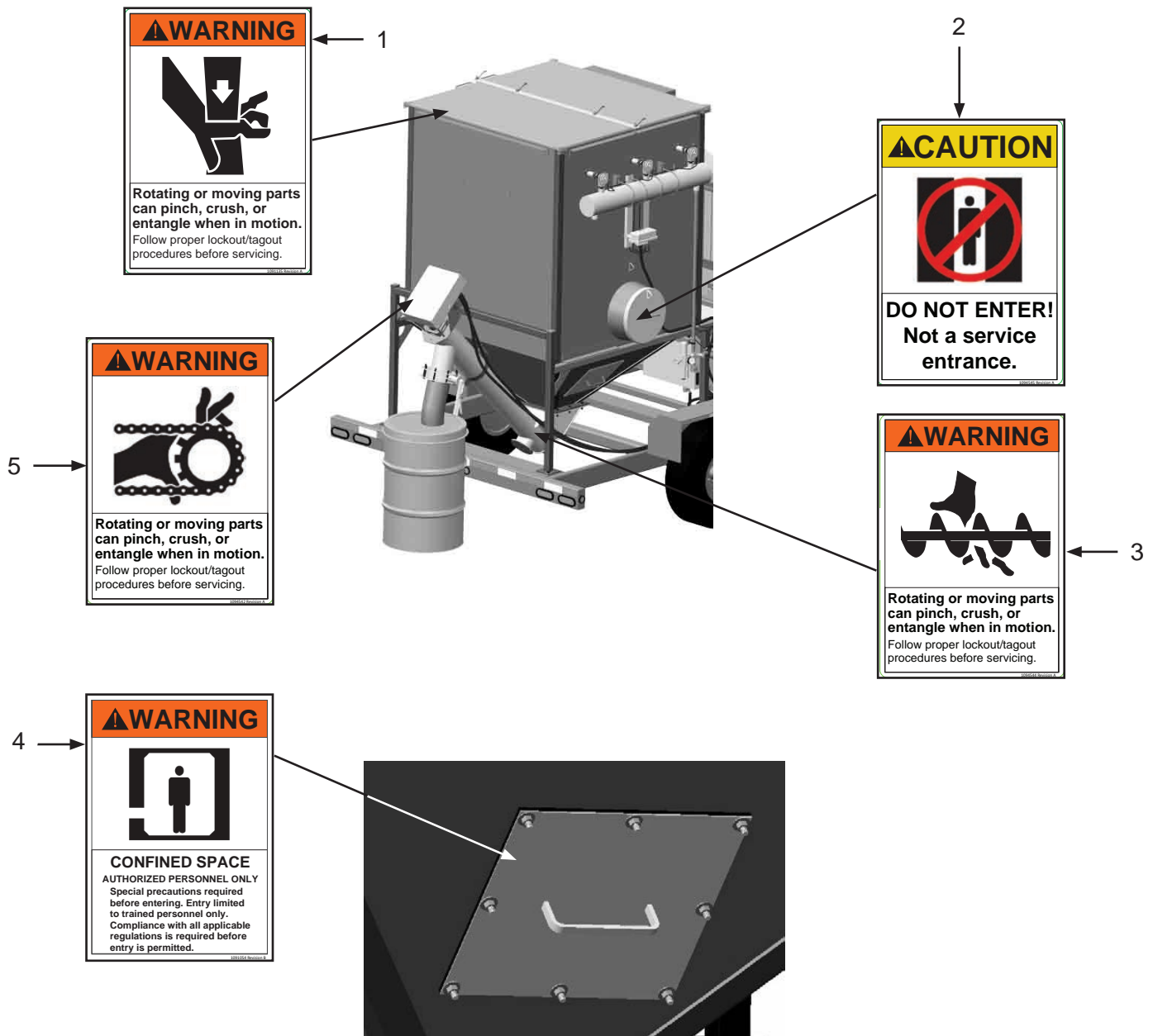
Figure 19: Hazard Identification Decals



Item #	Part #	Description
Fig. 19		
1	1094556	Lockout/Tagout Warning Decal
2	1094543	Rotating or Moving Parts Warning Decal
3	1094546	Read Manual Warning Decal

PART NUMBERS AND SCHEMATICS

Figure 20: Hazard Identification Decals (Cont.)



Item #	Part #	Description
--------	--------	-------------

Fig. 20


1	1091135	Rotating or Moving Parts Warning Decal
2	1094545	Do Not Enter Caution Decal
3	1094544	Rotating or Moving Parts Warning Decal
4	1091054	Confined Space Warning Decal
5	1094542	Rotating or Moving Parts Warning Decal



LITERATURE REFERENCES


Dustmaster® 8,000 CFM Electric Dust Collector



106M129	Part Numbers & Schematics Guide – Dustmaster® 8,000 CFM Electric Dust Collectors
1090129	Operator's Manual – Dustmaster® 8,000 CFM Electric Dust Collectors
109V561	Operator's Manual – Marathon Motor Manual 5554E
109V045	Operator's Manual – Dynamic Fan Corporation
109V562	Operator's Manual - Behnke Trailer

OPTIONAL ACCESSORIES

		16" I.D. DUCT HOSE					
		Length	Pitch	Bend Radius	Body Material	Wear Strip Material	Wear Strip Color
	10DH1625HD	25 Ft.	1-1/2"	14"	2-Ply Vinyl-Coated Polyester	PVC	Red
	10DH1650HD	50 Ft.	1-1/2"	14"	2-Ply Vinyl-Coated Polyester	PVC	Red
	15DH1625	25 Ft.	2"	16.8"	2-Ply Vinyl-Coated Polyester	PVC	Red

		16" I.D. DUCT HOSE COUPLING AND SCREW CLAMP	
		Style	Hose I.D.
	1017116	Stainless Steel Coupling	16"
	10DH202201600	Stainless Steel Screw Clamp	16"

		DUCT HOSE ADAPTERS	
		Dimensions	Material
	15DH73795060	24" x 16"	Carbon Steel

		DISCHARGE COLLECTION ACCESSORIES	
		Description	
	10103650	Discharge Collection Drum Cover	
	10103777	6" Flexible Discharge Hose (<i>Per Foot</i>)	

OPTIONAL ACCESSORIES



Part Numbers

3/4" I.D. X 1-1/4" O.D. AIR HOSE WITH COUPLINGS INSTALLED

	Length	Hose I.D.	Hose O.D.	Working Pressure	Hose Cover Color	Couplings
10AH034AC	50 Ft.	3/4"	1-1/4"	200 PSI	Red	2-Lug Crimped On



Part Numbers

3/4" I.D. X 1-1/4" O.D. AIR HOSE

	Length	Hose I.D.	Hose O.D.	Working Pressure	Hose Cover Color
10AH034	Per Ft.	3/4"	1-1/4"	200 PSI	Red



Part Numbers

MALE HOSE END COUPLING AND GASKET FOR 3/4" I.D. AIR HOSE

	Hose I.D.	Material	Coupling Style	GASKET		
				Rubber Gasket	Gasket I.D.	Gasket O.D.
10HE1	3/4"	Plated Iron	2-Lug	10UG2	3/4"	1-3/8"



Part Numbers

BOSS® CLAMP FOR 3/4" I.D. AIR HOSE

	Hose I.D.	Hose O.D. Range	Material
10A9	3/4"	1-8/64" – 1-20/64"	Plated Steel

CONTACT CENTER

- 3425 East Locust Street
Davenport, IA 52803

ph: 800.BLAST.IT (800.252.7848)

ph: 563.324.2519

fax: 563.324.6258

REGIONAL BRANCH OFFICES

- **Iowa**
Davenport
- **Louisiana**
Gonzales
Lafayette
- **Ohio**
Youngstown
- **Texas**
Beaumont
Corpus Christi
Deer Park



ABRASIVES

BLASTING

COATING

DUST COLLECTION

RENTAL & SERVICE

SAFETY

VACUUMS

40+ NATIONWIDE SHIPPING LOCATIONS



★ Marco Regional Branch Offices
and Shipping Locations

● Direct Shipping Locations

CONTACT MARCO

800.BLAST.IT
(800.252.7848)

563.324.2519

FAX: 563.324.6258

WWW.MARCO.US
SALES@MARCO.US