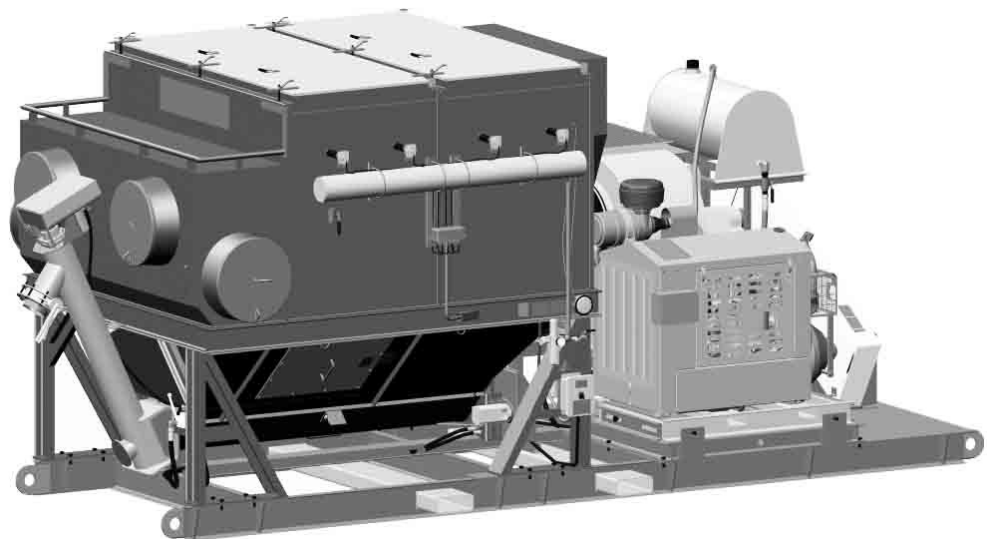




DUSTMASTER® 18,000 CFM TIER 4 DIESEL DUST COLLECTORS



PART NUMBERS AND SCHEMATICS GUIDE

Company Profile

Allredi was formed in the early 2020, when two of the largest distributors in the blasting, coating, safety, and environmental industry, APE Companies and Marco Group International, joined forces. While the qualities both companies are known for have not changed, a lot about our business is new. New abilities. New abilities. New ways to help you win. This calls for a new name, Allredi.

This name exemplifies what we have become. It is completely oriented to the needs of our customers. To your needs. It says that when you call us for anything – products, service, expert advice, anything – you can consider it done. Or even better, Allredi done.

We are your right-now supplier. From skills to SKUs, we deliver the goods fast. So you can be more agile every minute, every day. This is who we are. This is what our new name means. Go ahead and expect excellence, because we're bringing it.

Our Mission and Vision

To be the industry's preferred partner in surface preparation solutions through unrivaled technical expertise, customer experience, product availability, and tailored service offerings.

The Allredi Difference

- **Industry Experience** – With Allredi on your team, you have access to expertise which can only come from decades of industry leadership. We have organized our engineering department, production specialists, customer operations, and safety support into a "Center of Competence." As an Allredi customer, you have access to hundreds of years of cumulative experience related to your operations.
- **Manufacturing Excellence** – Allredi is a U.S. based manufacturer of equipment for the Surface Preparation and Protective Coatings industries. Allredi's engineers benchmark the industry to ensure that we design and manufacture superior products that set the "Gold Standard" for performance, safety, and quality.
- **Legendary Customer Service** – Allredi's legendary customer service team is staffed by friendly, highly-trained individuals who are focused on providing the highest level of product support, order accuracy, and customer satisfaction.
- **Product Availability** – We stock over 10,000 SKU's and have over 45 shipping locations to serve North American and International markets for all major brands of blasting, coating, environmental, and safety equipment. Allredi is your right-now supplier, so you can keep your projects moving. From our foundation of strong relationships, we have built a nationwide network that puts vast inventory and ready service close to our customers. We provide advanced expertise, and we deliver the goods fast – so you can easily access the products and services you need to me more agile every minute, every day.
- **Technology Leadership** – Our website provides: Operator's Manuals, Part Numbers and Schematics Guides, SDS information, and key product features and specifications, providing access to information 24/7.

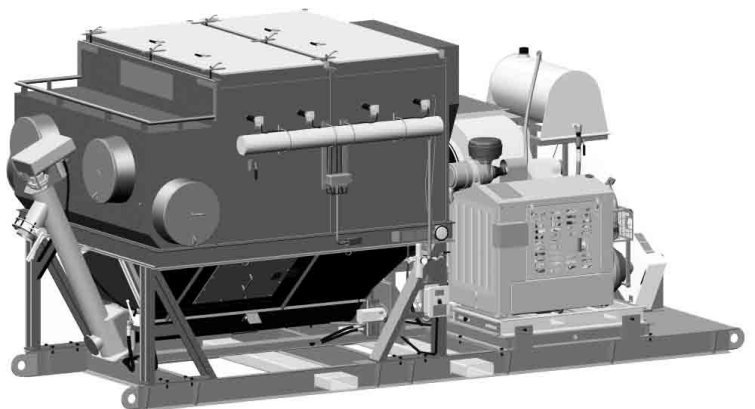
TABLE OF CONTENTS

Company Profile	1	Inlet Door Assembly	33
Table of Contents	2	Dust Collector Filter Cartridge Pulsers	34
Part numbers	3	Trailer	35
Specifications	4	Dust Collector Filter Cartridge Hatch Door	37
Assembly Part Numbers and Schematics	5	Diaphragm Valve	38
Front Assembly	5	Hazard Identification Decals	39
Fuel Tank	6	Optional Accessories	43
Hydraulic Oil Tank	7	Literature References	45
Hydraulic Oil Filter Assembly	9		
Hydraulic Hoses	10		
Fan Belt Assembly	11		
Fan Belt Guard Back Assembly	13		
Fan Assembly and Battery Box	14		
Main Auger Drive Assembly	15		
Main Auger Bearing	16		
Main Auger Motor	17		
Main Auger	18		
Access Panel Assembly	19		
Main Auger Protective Grate	19		
Pneumatic Ball Vibrators	20		
Pulser System Assembly	21		
Pulser Regulator and Timer Assembly	23		
Pulser Solenoid Enclosure Assembly	24		
Discharge Auger Assembly	25		
Discharge Auger Drive Assembly	27		
Discharge Auger Clean-out Assembly	29		
Discharge Auger	30		
Hydraulic Pump	31		
Hydraulic Control Assembly	32		

PART NUMBERS

DUSTMASTER® 18,000 CFM TIER 4 DIESEL DUST COLLECTORS

Part Numbers	Filter Cartridge Material						Trailer	Skid	Filter Cartridge Quantity
	None	High Density Pleat 85% Cellulose/15% Poly Blend	Reduced Pleat 85% Cellulose/15% Poly Blend	Fire Retardant	HEPA	Spunbond			
10106472	X						X		–
10106473		X					X		24
10106474			X				X		24
10106475				X			X		24
10106476					X		X		24
10106477						X	X		24
10106673	X							X	–
10106679		X						X	24
10106680			X					X	24
10106681				X				X	24
10106682					X			X	24
10106683						X		X	24

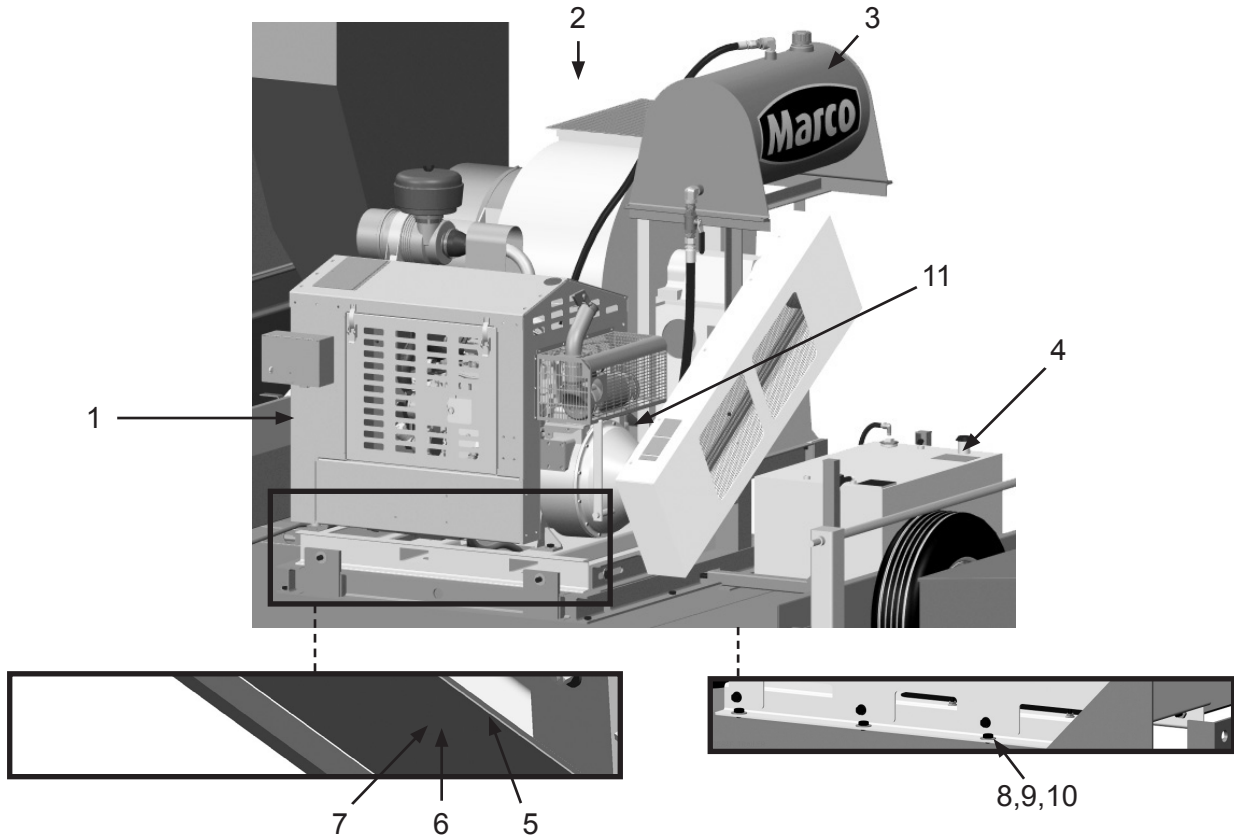


SPECIFICATIONS

Capacity:	CFM = 10,880-18,350 W.C. = 6 – 16"
Filter Cartridge Style:	Open Top with Flange, Closed Bottom - 24 Required
Filter Cleaning:	Pulse System, 5–15 second intervals Pulse Duration: 200–350 millisecond
Air to Cloth Ratio:	2.72:1 @ 20,000 CFM
Filter Area:	7,361 square feet
Efficiency:	85/15 High Density Pleat Blend Filters – 99.8% @ 0.5 micron 85/15 Reduced Pleat Blend Filters – 99.8% @ 0.5 micron HEPA Filters – 99.99% @ 0.3 micron Fire Retardant Filters – 96.8% @ 2.0 micron Spunbond Filters – 97% @ 3.0 micron
Ducting Connections:	20" I.D., Quantity of Four
Clean-out Ports:	One
Dust Removal Conveyor:	Main Auger, 6" Discharge Auger, Hydraulic Motor Drive
Fan:	Backward Inclined, non-overloading, spark resisting
Engine:	Diesel, Tier 4 Final, 74 Horsepower
Fuel Capacity:	Type: Diesel Capacity: 55 Gallons
Air Requirements:	Clean, Dry, Compressed Air 24 CFM @ 90 PSI
Electrical System:	12-Volt DC
Engine Protection:	Engine Monitoring System with automatic shutdown measures: coolant temperature, intake air temperature, engine intake manifold pressure, engine oil pressure, pressure in fuel rail, engine speed and timing.
Fluid Specifications:	Hydraulic Oil: H46 or equivalent, 40 Gallons Diesel Fuel: See Engine Operator's Manual for type, 80 Gallons Grease/Lubricator: Shell Gadus S2 V100 2 or equivalent
Unit Dimensions Trailer:	Weight: 11,680 pounds (empty) Tongue Weight: 2620 pounds Length: 23' 9" Width: 8' 6" Height: 10' 4"
Unit Dimensions Skid:	Weight: 10,120 pounds (empty) Length: 19' 10" Width: 8' 6" Height: 8' 9"

ASSEMBLY PART NUMBERS AND SCHEMATICS

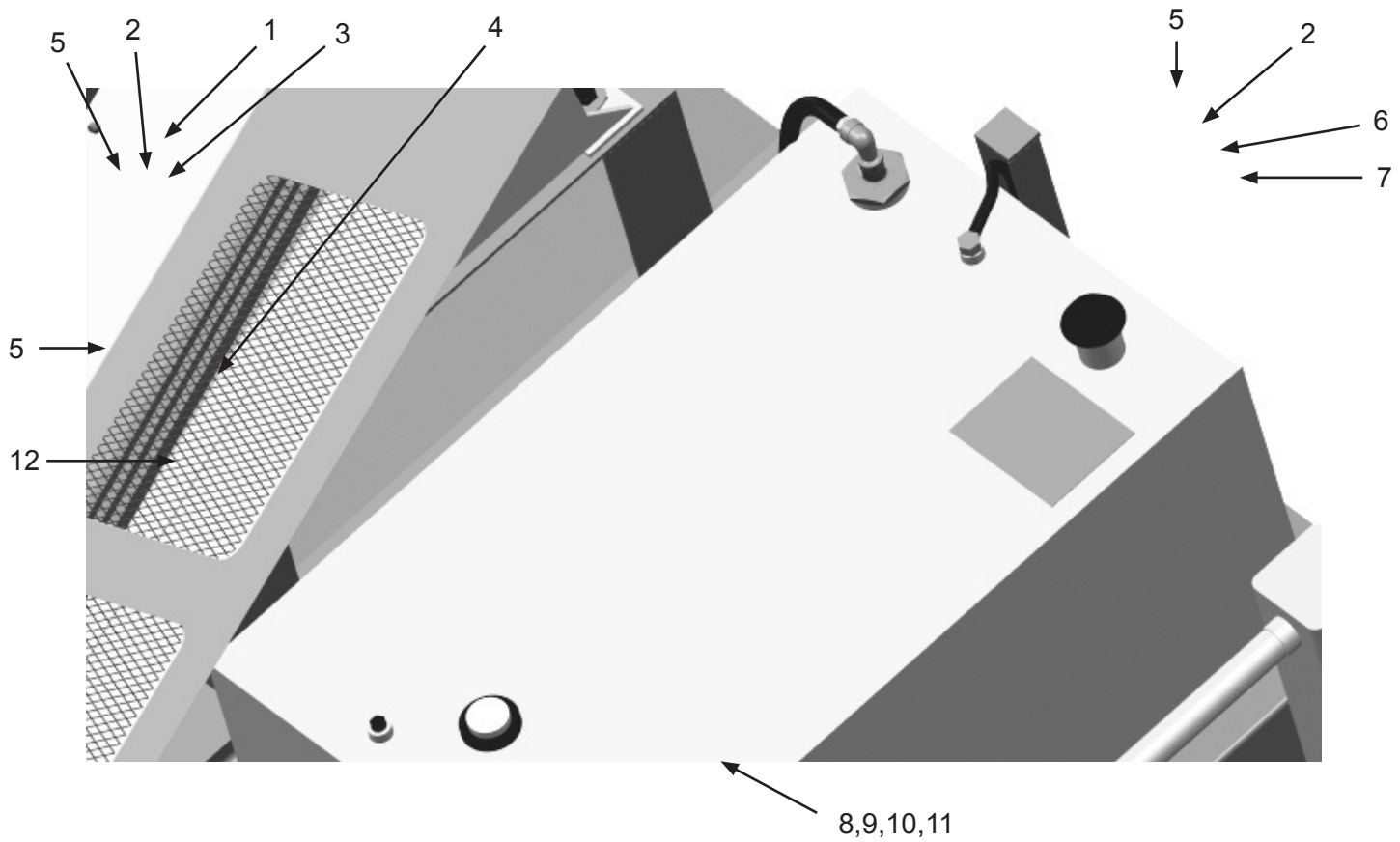
Figure 1: Front Assembly



Item#	Part#	Description
Fig. 1		
1	10105840	Perkins Engine 120HP Tier 4 Final CPU with DEF Tank
2	10103626	BI 270 Fan (See Figure 8)
3	10105031	40 Gallon Hydraulic Tank (See Figure 3)
4	10103251	Fuel Tank - 80 Gallon (See Figure 2)
5	10103440	3/4-10 Draw Bolt (Two Required)
6	10103718	3/4" Washer (Four Required)
7	10103420	3/4-10 Nut (Four Required)
8	10104234	3/8-16 x 1-1/4" Bolt Zinc (Eight Required)
9	10101942	3/8" Galvanized Flat Washer (16 Required)
10	10102329	3/8-16 Hex Nut with Nylon Insert (Eight Required)
11	10104025	Twin Disc Clutch
—	10103970	Key
—	10106699	Oil Filter
—	10106701	Primary Fuel Filter
—	10106700	Secondary Fuel Filter
—	10106702	Breather Element
—	10106703	Outer Air Filter
—	10106704	Inner Air Filter
—	10106772	Clutch Arm Extension
—	109V565	Operator's Manual - Perkins® Engine
—	106M143	Part Numbers & Schematics Guide – Dustmaster® 28,000 CFM Tier 4 Diesel Dust Collector
—	1090143	Operator's Manual – Dustmaster® 28,000 CFM Tier 4 Diesel Dust Collector

PART NUMBERS AND SCHEMATICS

Figure 2: Fuel Tank



Item #	Part #	Description
Fig. 2		
—	10103251	Fuel Tank - 80 gallon
1	10106471	1/4" Pipe Plug
2	10106469	3/8" Barb x 3/8" NPT
3	10103617	Withdraw Tube - 16"
4	10103424	Sight Gauge
5	10103619	1/2" Fuel Hose (<i>Per Foot</i>)
6	10106470	3/8" NPT Street Elbow
7	10106484	Adapter
8	10101059	3/8-16 x 1-1/4" Bolt Galvanized (<i>Four Required</i>)
9	10101942	3/8" Galvanized Flat Washer (<i>Eight Required</i>)
10	1012318	3/8-16 Hex Nut (<i>Four Required</i>)
11	10101936	3/8" Zinc Lock Washer (<i>Four Required</i>)
12	10103968	Locking Fuel Cap with Key
—	10103620	3/8" Inline Filter (<i>Not Shown</i>)
—	10103961	Fuel Tank Rubber Cushioning Pad (<i>Not Shown</i>)

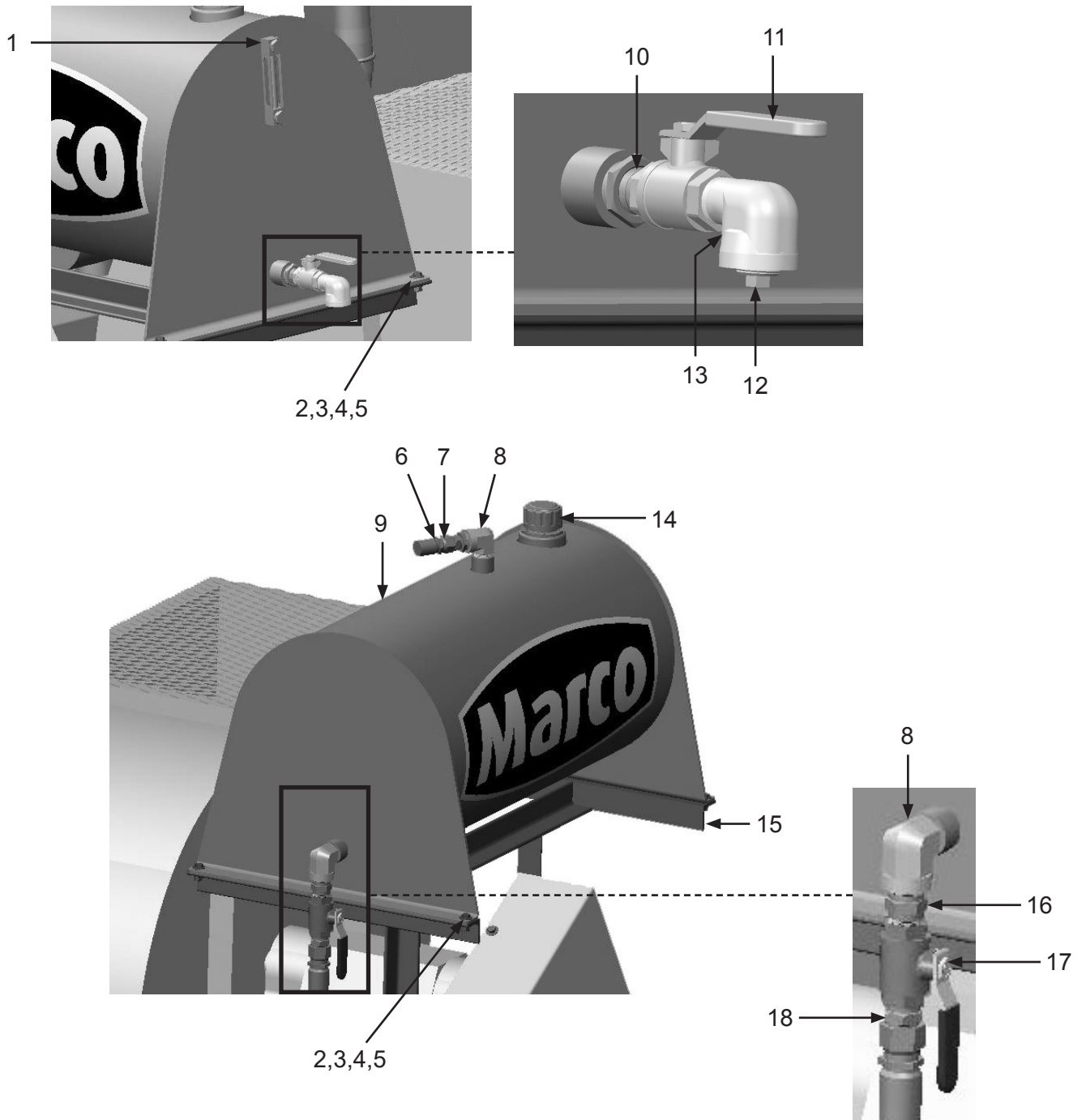
PART NUMBERS AND SCHEMATICS

Hydraulic Oil Tank

Item #	Part #	Description
Fig. 3		
1	10103942	Sight Level Gauge
2	1011747	3/8-16 x 1" Bolt (<i>Four Required</i>)
3	10101942	Flat Washer - 3/8" (<i>Eight Required</i>)
4	10101936	Lock Washer - 3/8" (<i>Four Required</i>)
5	1012318	Hex Nut - 3/8-16 (<i>Four Required</i>)
6	10103314	Straight Adapter - 3/4" NPT x 12 JIC
7	20PFHA24SB1612	Reducing Bushing - 1" NPT x 3/4" NPT
8	20PFHA25UG1616	Street Elbow - 90° - 1" NPT (<i>Two Required</i>)
9	10105031	Hydraulic Oil Reservoir - 40 Gallon
10	1011213	Close Nipple - 3/4" NPT - Galvanized
11	10L8074C	Full Port Ball Valve - 3/4" NPT
12	10DSHP75	Pipe Plug - Square Head - 3/4" NPT
13	10102479	Street Elbow - 90° - 3/4" NPT - Galvanized
14	10103971	Filler/Breather Cap
15	10102958	Hydraulic Oil Tank Mount
16	20PFHA24SA1616	Hex Nipple - 1" NPT
17	1011601	Full Port Ball Valve - 1" NPT
18	10103312	Straight Adapter - 1" NPT x 16 JIC

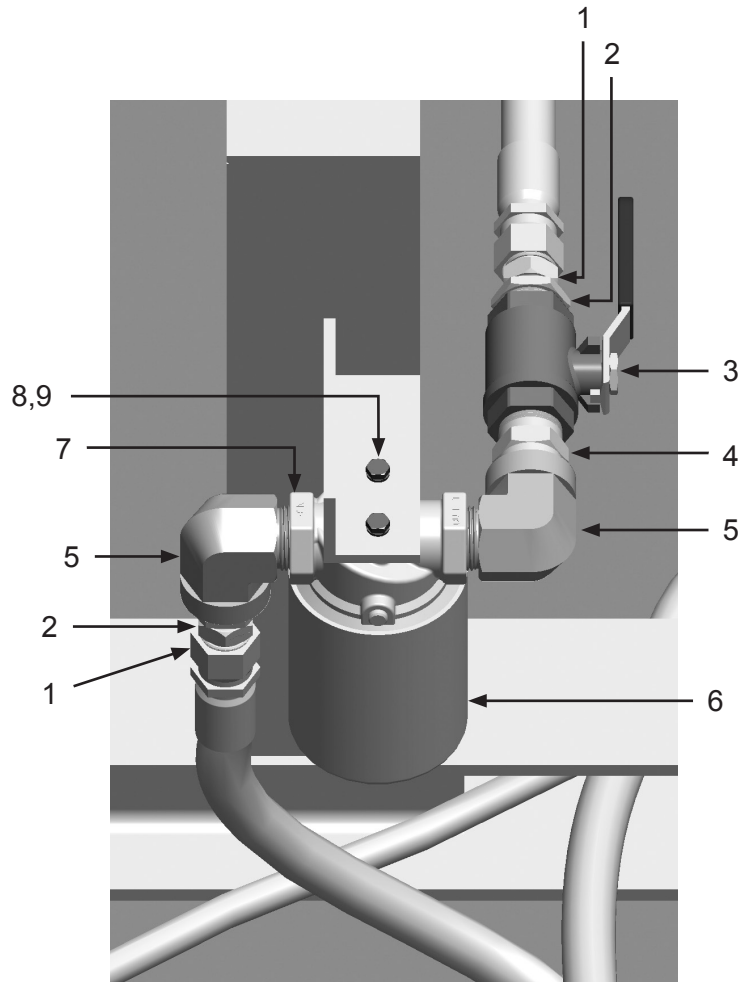
PART NUMBERS AND SCHEMATICS

Figure 3: Hydraulic Oil Tank



PART NUMBERS AND SCHEMATICS

Figure 4: Hydraulic Oil Filter Assembly



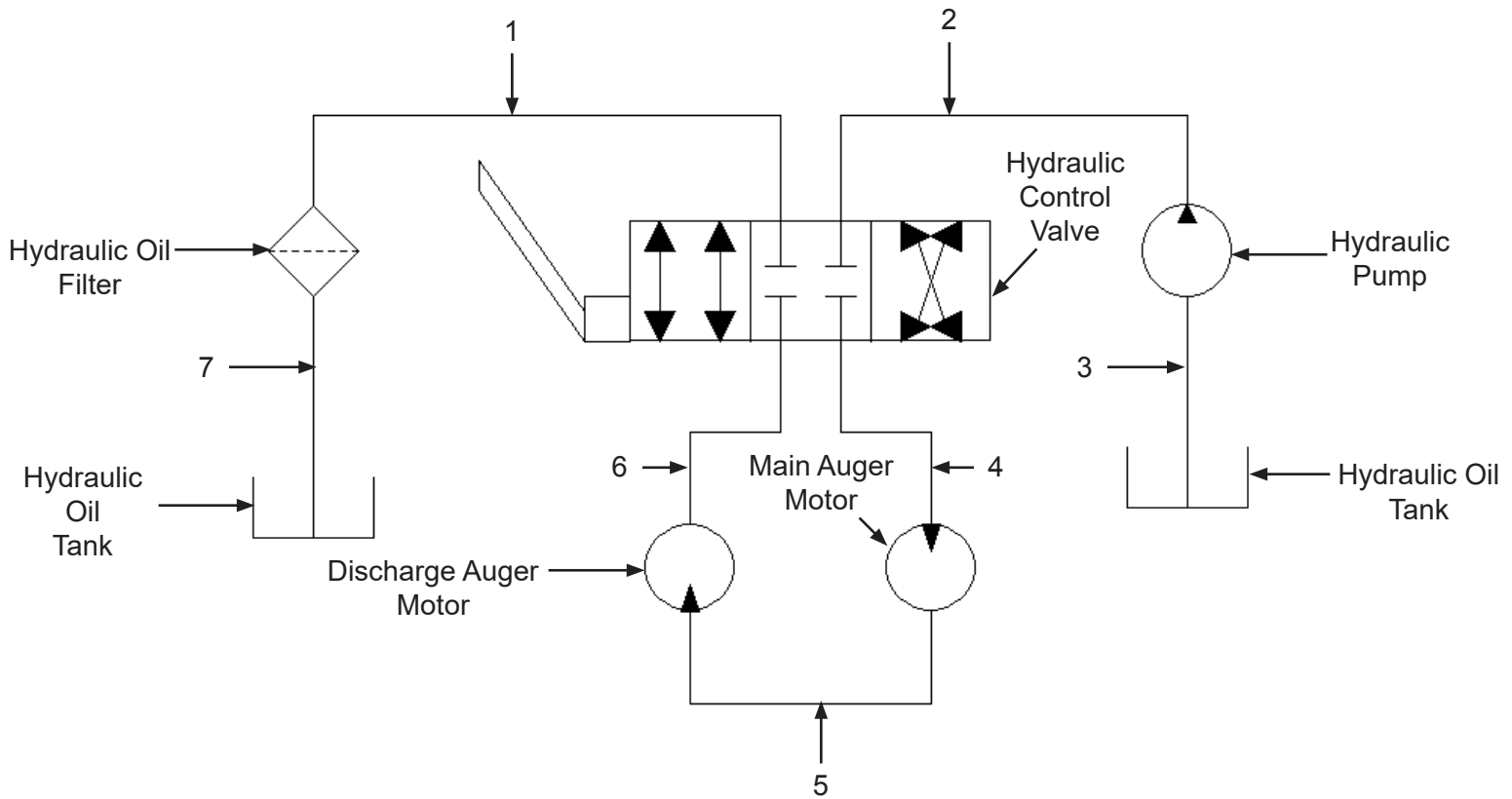
Item #	Part #	Description
--------	--------	-------------

Fig. 4

1	10103314	3/4" NPT x 12 JIC Straight Adapter
2	20PFHA24SB1612	1" x 3/4"Reducing Bushing
3	1011601	3/4"Full Port Brass Ball Valve
4	20PFHA24SA1616	1" Hex Nipple
5	20PFHA25UG1616	1" Street Elbow (<i>Two Required</i>)
6	10104058	Hydraulic Oil Filter
7	10104057	Hydraulic Oil Filter Head
8	1012153	1/4"Lock Washer
9	20100125	1/4-20 x 3/4" Zinc Bolt

PART NUMBERS AND SCHEMATICS

Figure 5: Hydraulic Hoses



Item #	Part #	Description
--------	--------	-------------

Fig. 5

1	10104069	Hydraulic Hose - 3/4" I.D. x 17' - 3045 psi
2	10103406	Hydraulic Hose - 3/4" I.D. x 21' - 3045 psi
3	10103405	Hydraulic Hose - 1" I.D. x 9' 6" - 2000 psi
4	10103407	Hydraulic Hose - 1/2" I.D. X 14' - 2000 psi
5	10103501	Hydraulic Hose - 1/2" I.D. X 18' 8" - 2000 psi
6	10103409	Hydraulic Hose - 1/2" I.D. x 7' 1" - 2000 psi
7	10104055	Hydraulic Hose - 3/4" I.D. x 7' - 3045 psi

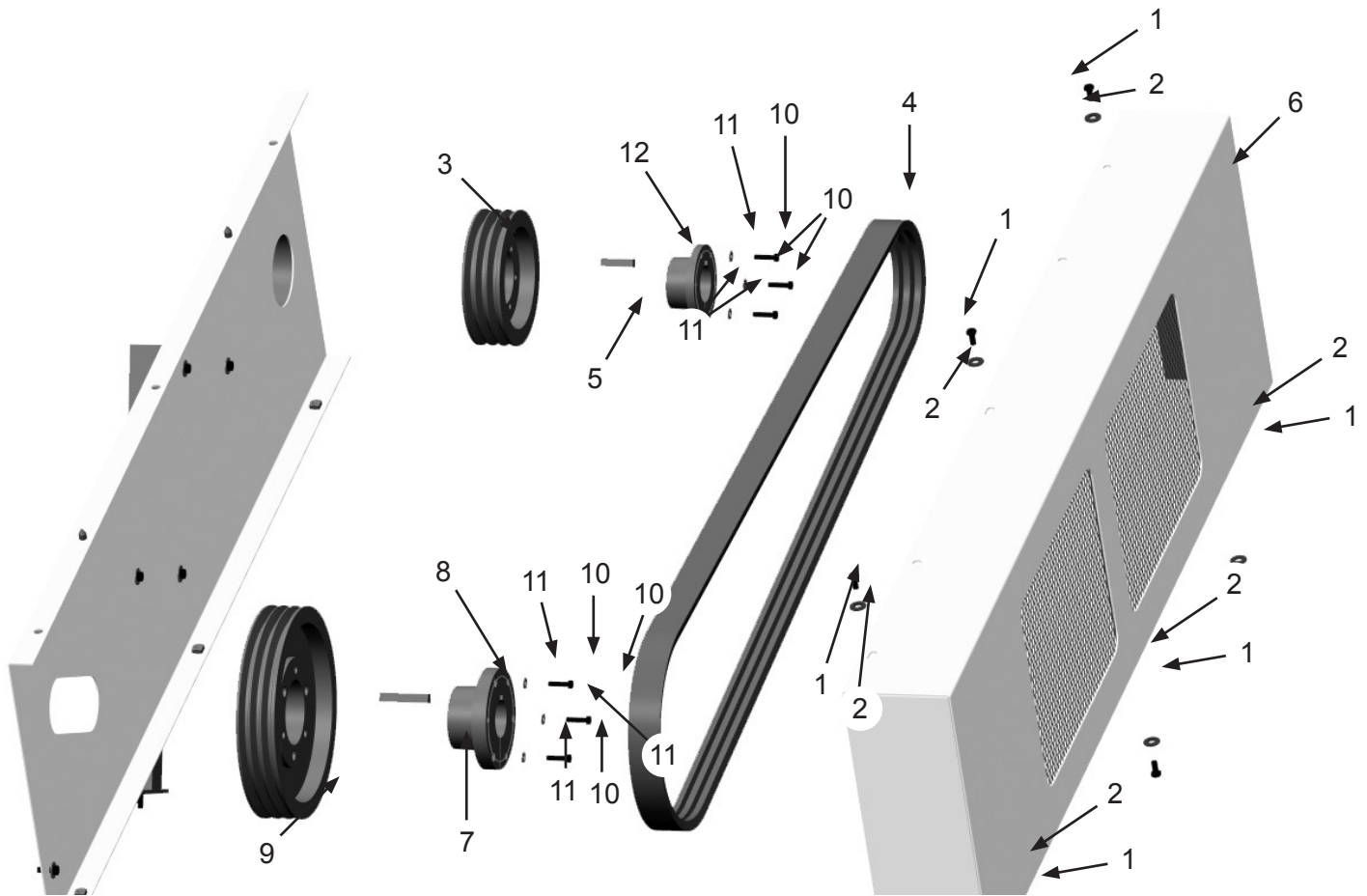
PART NUMBERS AND SCHEMATICS

Fan Belt Assembly

Item #	Part #	Description
Fig. 6		
1	10103400	3/8-16 x 3/4" Bolt <i>(Six Required)</i>
2	10101942	3/8" Galvanized Flat Washer <i>(Six Required)</i>
3	10103324	8" Sheave
4	10103327	3-Band Fan Drive Belt – 125"
5	10103323	8" Sheave Bushing with Key <i>Includes Mounting Hardware</i>
6	10102965	Belt Guard Cover
7	10103325	12-1/2" Sheave Bushing <i>Includes Mounting Hardware</i>
8	10103644	1/2" x 1/4" x 5/8" x 5/16" Step Key
9	10103326	12-1/2" Sheave
10	10101943	1/2-13 x 1-3/4" Bolt <i>(Six Required)</i>
11	10100675	1/2" Lock Washer <i>(Six Required)</i>
12	10103643	5/8" Key Cut

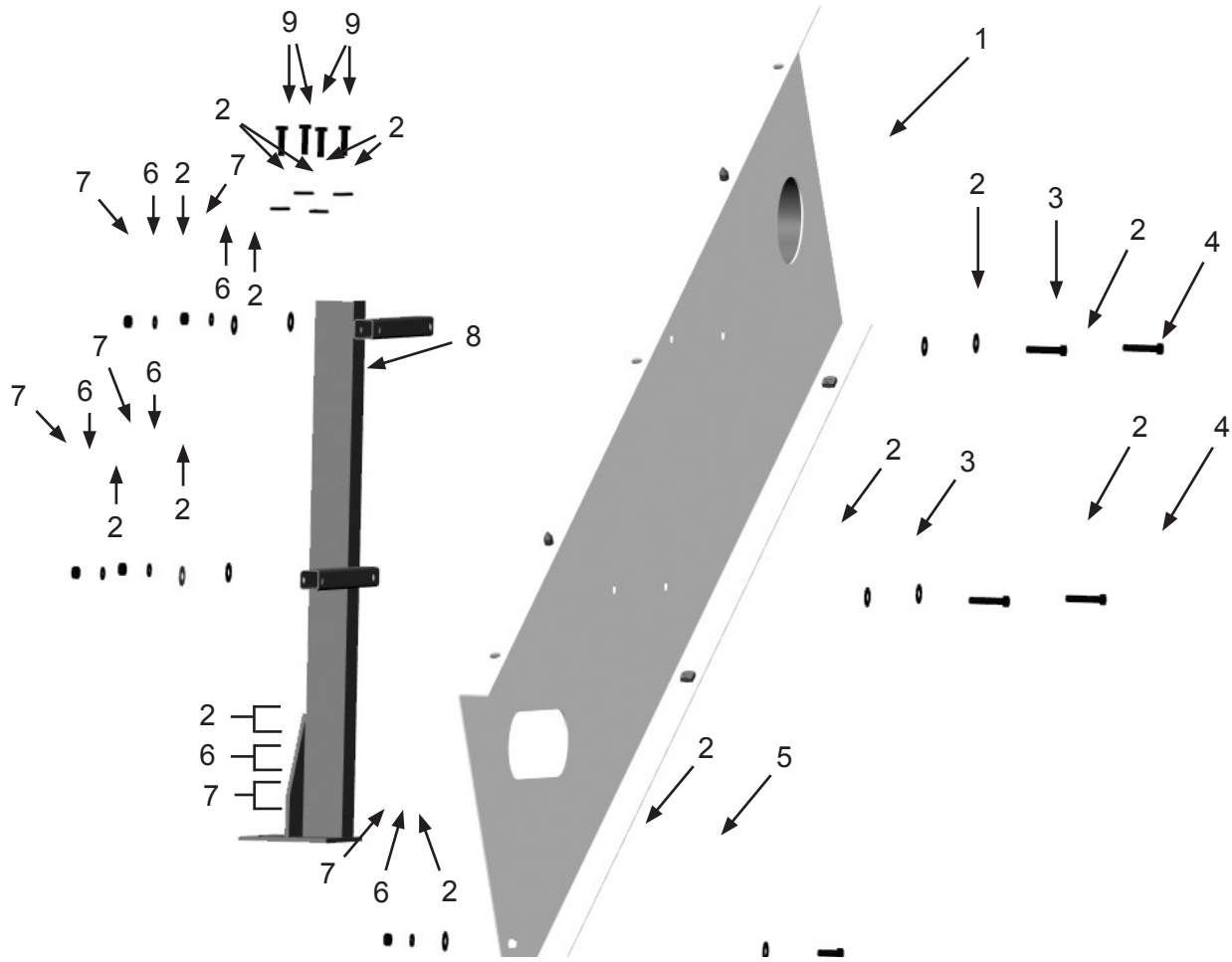
PART NUMBERS AND SCHEMATICS

Figure 6: Fan Belt Assembly



PART NUMBERS AND SCHEMATICS

Figure 7: Fan Belt Guard Back Assembly



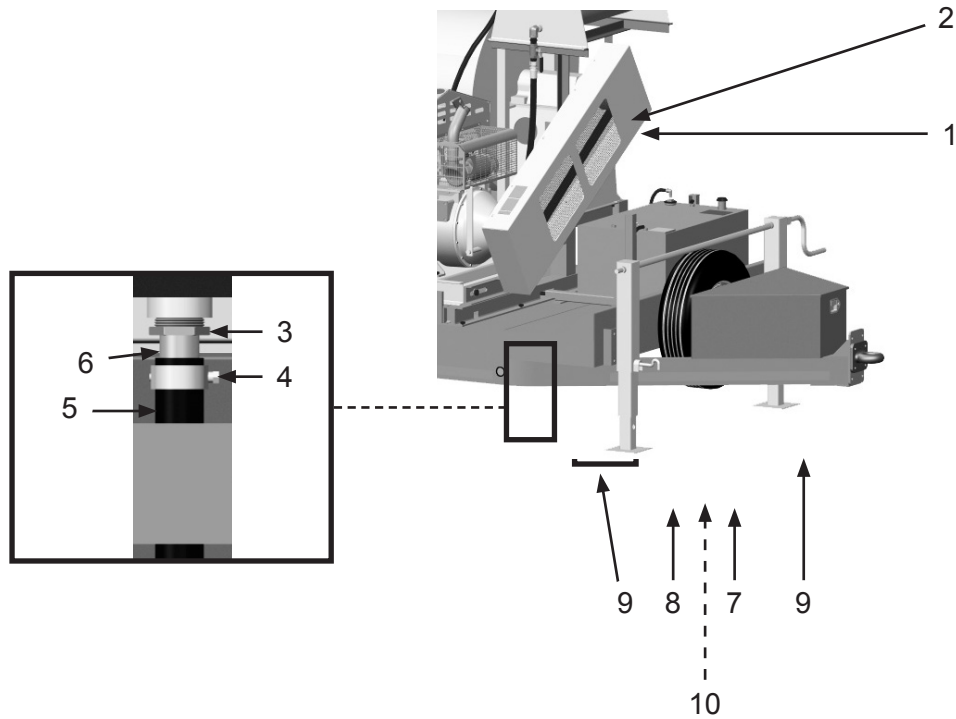
Item #	Part #	Description
--------	--------	-------------

Fig. 7

1	10102968	Belt Guard Back
2	10101942	3/8" Galvanized Flat Washer (<i>18 Required</i>)
3	1028617	3/8-16 x 1-3/4" Shoulder Bolt (<i>Two Required</i>)
4	10101933	3/8-16 x 2-1/2" Bolt (<i>Two Required</i>)
5	1011747	3/8-16 x 1" Bolt
6	10101936	3/8" Zinc Lock Washer (<i>Nine Required</i>)
7	1012318	3/8-16 Hex Nut (<i>Nine Required</i>)
8	10103354	Belt Guard Mount
9	10101059	3/8-16 x 2-1/4" Bolt (<i>Four Required</i>)

PART NUMBERS AND SCHEMATICS

Figure 8: Fan Assembly and Battery Box



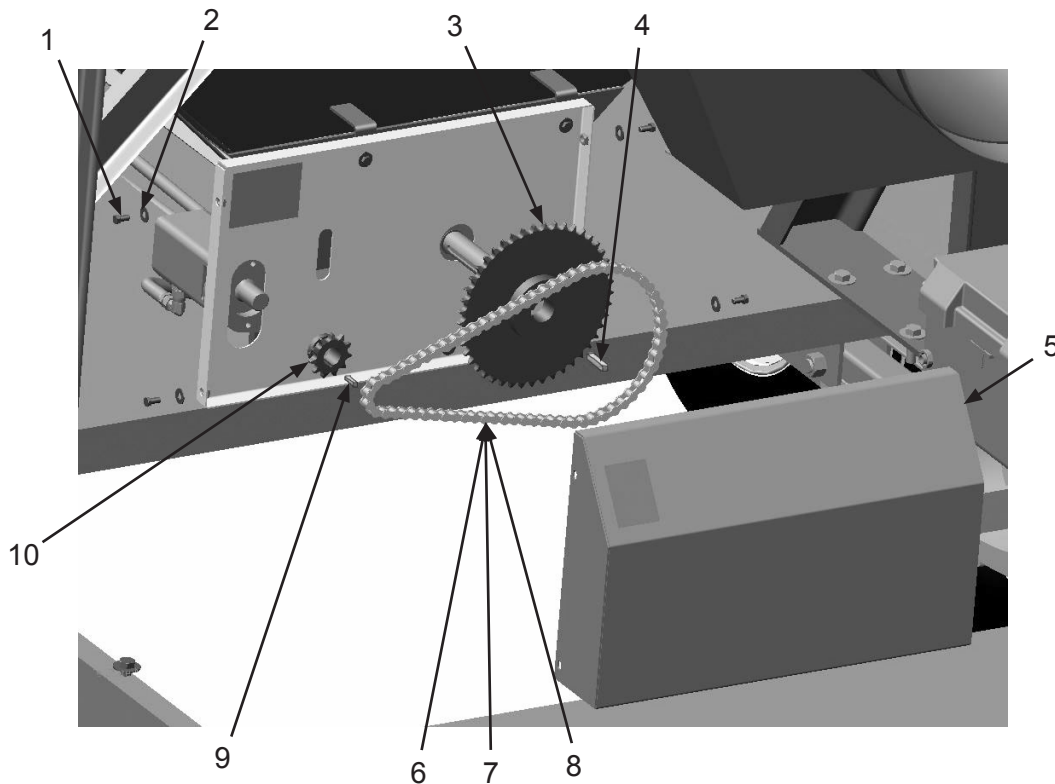
Item #	Part #	Description
--------	--------	-------------

Fig. 8

—	10103626	BI 270 Fan
1	10103962	Connection Rubber Gasket
2	10103416	Adjustable Clamp Fastener <i>(Two Required)</i>
3	20PFHA24SB2016	1-1/4" x 1" Reducing Bushing
4	10104136	T-Bolt Clamp 1-9/16" X 1-11/16" OD
5	10103654	1-1/4" I.D. Hose <i>(Per Foot)</i>
6	10000197	1" x 3" Toe Nipple
7	10103342	Battery Box
8	10103963	Rubber Cushioning Pad
9	10105867	Battery Cables
10	10103341	Battery - Group 31

PART NUMBERS AND SCHEMATICS

Figure 9: Main Auger Drive Assembly



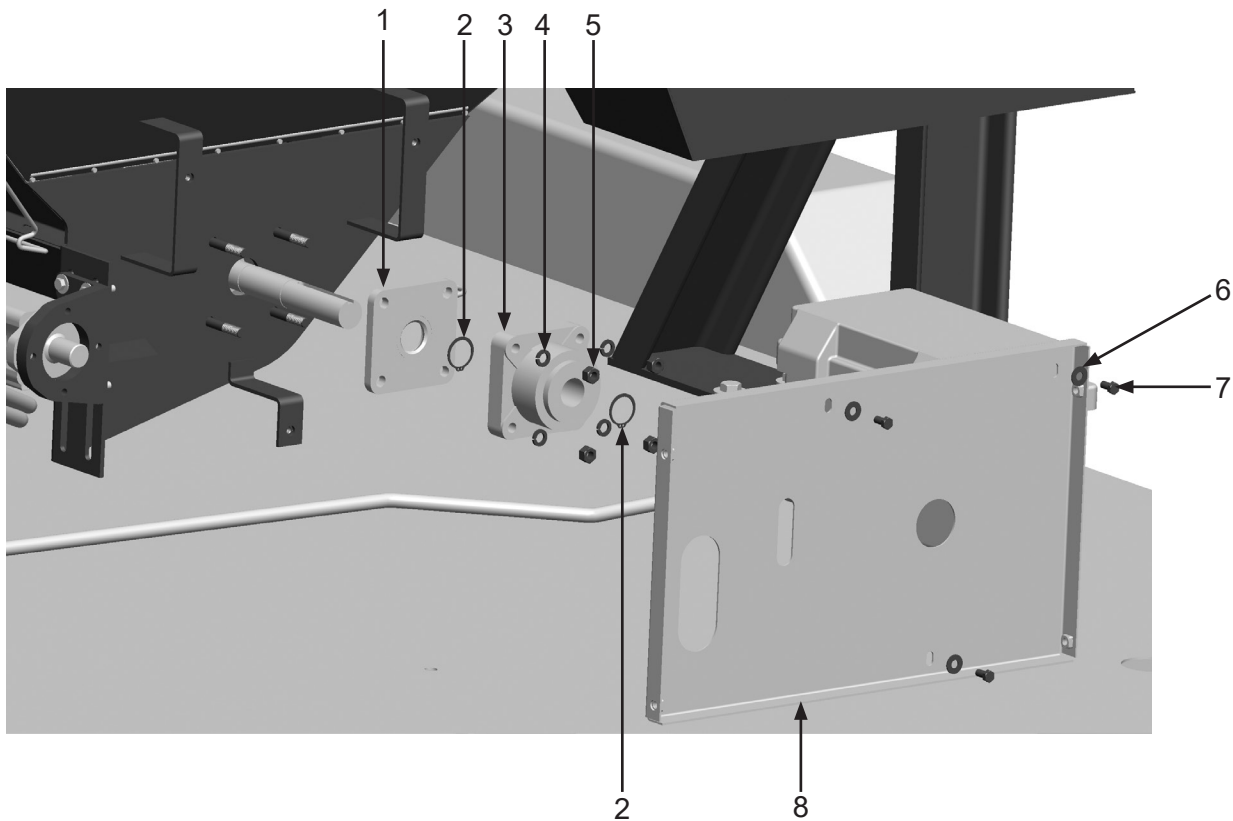
Item #	Part #	Description
--------	--------	-------------

Fig. 9

1	10103400	3/8-16 x 3/4" Bolt (<i>Four Required</i>)
2	10101942	3/8" Galvanized Flat Washer (<i>Four Required</i>)
3	10104218	45-Tooth Sprocket
4	10103641	3/8" Key Cut
5	10102952	Main Auger Motor Cover
6	10103391	60# Cottered Roller Chain (<i>Per Foot</i>)
7	10103392	60# Connecting Link
8	10103614	60# Offset Link
9	10103642	5/16" x 1/4" x 1/8" x 1/8" Key
10	10103265	11-Tooth Sprocket
—	10104192	Main Auger Chain Kit <i>Includes Item #'s: 7, 8, and 9</i>

PART NUMBERS AND SCHEMATICS

Figure 10: Main Auger Bearing



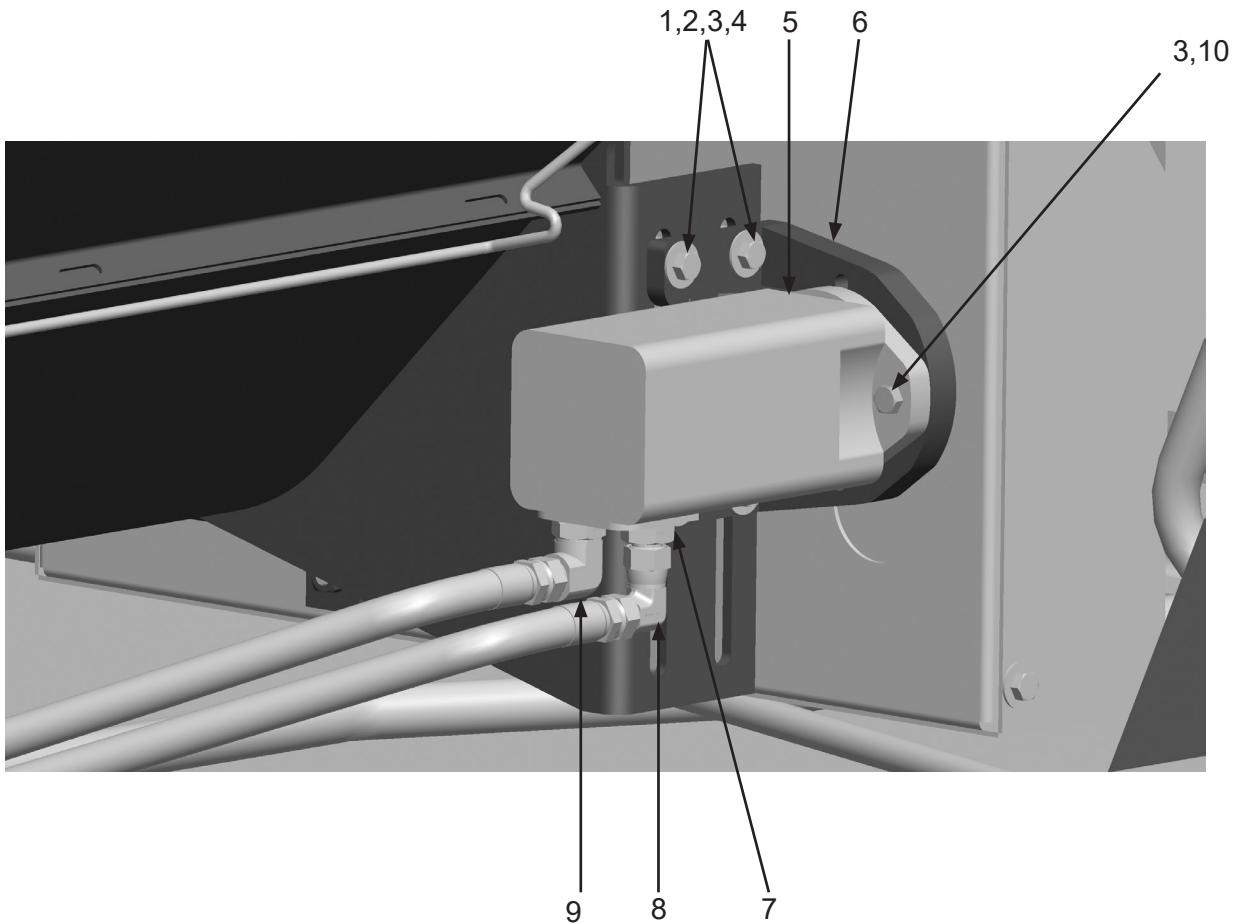
Item #	Part #	Description
--------	--------	-------------

Fig. 10

1	10102902	Seal Plate
2	10103605	Snap Ring <i>(Two Required)</i>
3	10102903	Thrust Bearing
4	10100675	1/2" Lock Washer <i>(Four Required)</i>
5	1014022	1/2-13 Hex Nut <i>(Four Required)</i>
6	10101942	3/8" Galvanized Flat Washer <i>(Three Required)</i>
7	10103400	3/8-16 x 3/4" Bolt <i>(Three Required)</i>
8	10102955	Main Auger Guard Back

PART NUMBERS AND SCHEMATICS

Figure 11: Main Auger Motor



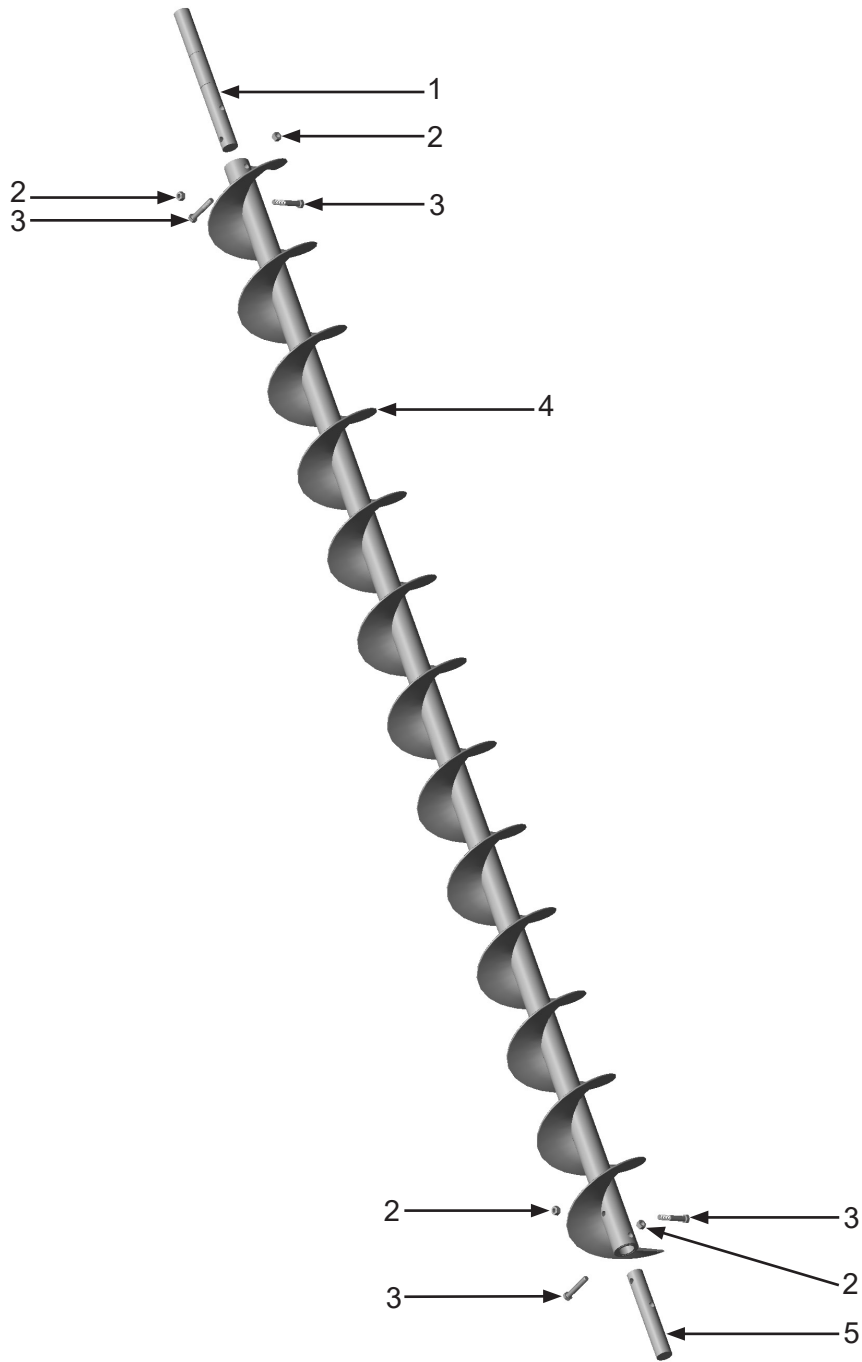
Item #	Part #	Description
--------	--------	-------------

Fig. 11

1	1028617	3/8-16 x 1-3/4" Shoulder Bolt (<i>Four Required</i>)
2	10101942	3/8" Galvanized Flat Washer (<i>Eight Required</i>)
3	10101936	3/8" Zinc Lock Washer (<i>Four Required</i>)
4	1012318	3/8-16 Hex Nut (<i>Four Required</i>)
5	10103266	18.7 Displacement Hydraulic Motor
6	10102881	Hydraulic Motor Mount with Hardware
7	10103612	JIC 8 x SAE 10 Straight Adapter
8	10103611	JIC 8 x JIC 8 90° Elbow
9	10103308	JIC 8 x SAE 10 90° Elbow
10	10101059	3/8-16 x 1-1/4" A307 Bolt Galvanized
—	10103941	Seal Kit for 18.7 Displacement Hydraulic Motor 10103266

PART NUMBERS AND SCHEMATICS

Figure 12: Main Auger



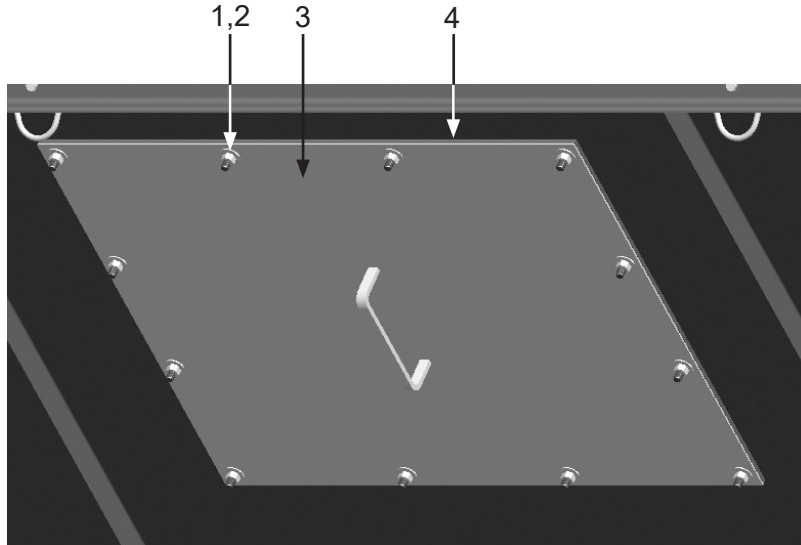
Item #	Part #	Description
--------	--------	-------------

Fig. 12

1	10103306	Drive Shaft
2	10101941	1/2-13 Galvanized Hex Nut (<i>Four Required</i>)
3	10103401	1/2-13 x 3" Galvanized Bolt (<i>Four Required</i>)
4	10103262	118" x 9" Standard Pitch Auger
5	10102910	Auger Shaft End

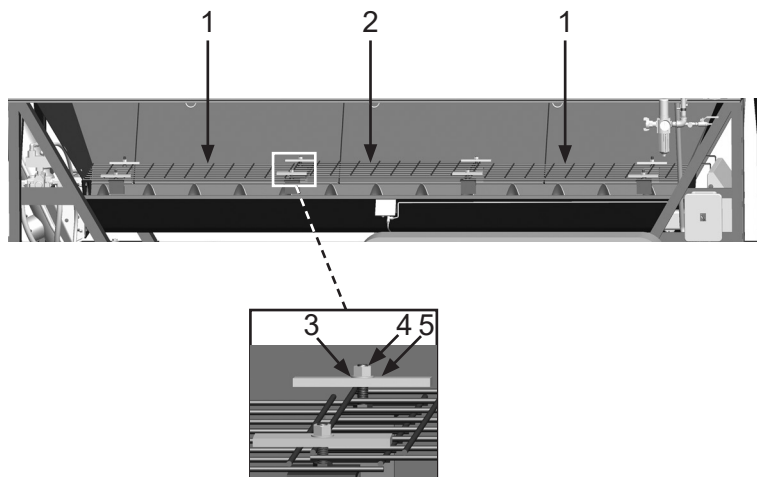
PART NUMBERS AND SCHEMATICS

Figure 13: Access Panel Assembly



Item #	Part #	Description
Fig. 13		
1	1012318	3/8-16 Hex Nut <i>(12 Required)</i>
2	10101942	3/8" Flat Washer <i>(12 Required)</i>
3	10102933	20" Access Panel Door
4	10103344	1/4" X 1-1/2" Adhesive-Backed Gasket <i>(Per Foot)</i>

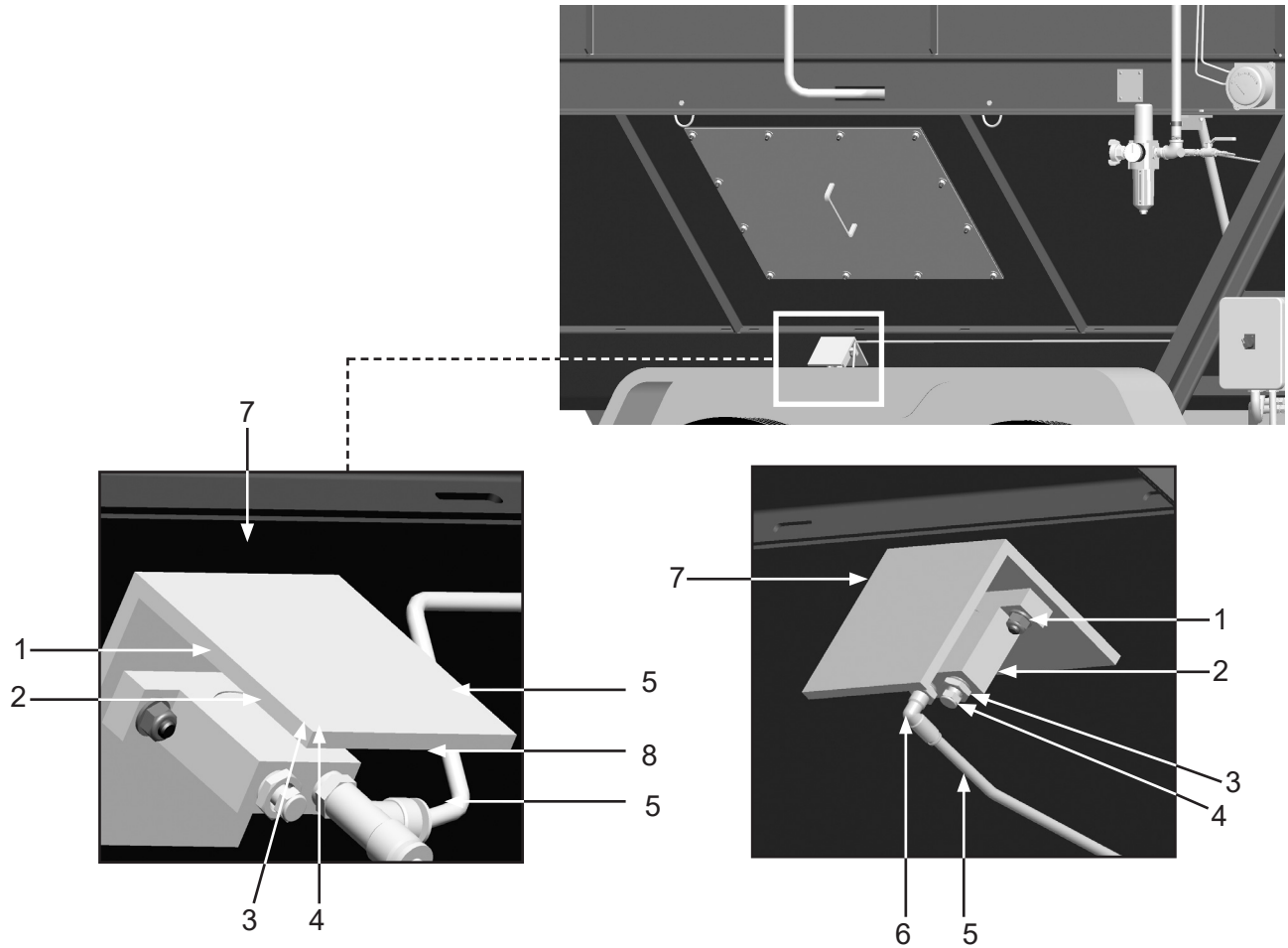
Figure 14: Main Auger Protective Grate



Item #	Part #	Description
Fig. 14		
1	10103966	Protective Grate - 44 Inches <i>(Two Required)</i>
2	10103967	Protective Grate - 36 Inches
3	10100674	Flat Washer - 1/2" <i>(Eight Required)</i>
4	1014022	1/2-13 Hex Nut <i>(Eight Required)</i>
5	10102936	Protective Grate Bracket <i>(Eight Required)</i>

PART NUMBERS AND SCHEMATICS

Figure 15: Pneumatic Ball Vibrators



Item #	Part #	Description
--------	--------	-------------

Fig. 15

1	1012323	1/4-20 Zinc Lock Nut with Nylon Insert <i>(Four Required)</i>
2	10103258	Pneumatic Ball Vibrator <i>(Two Required)</i>
3	20PFHA24SB0402	1/4" x 1/8" Reducing Bushing
4	1012905	1/8" Breather Muffler <i>(Two Required)</i>
5	10103322	1/4" I.D. Black Urethane Tubing <i>(Per Foot)</i>
6	20PFBA31095614	1/4" Tube x 1/4" NPT 90° Fitting
7	10103609	Vibrator Shield <i>(Two Required)</i>
8	10103261	1/4" Male Push-to-connect Tee

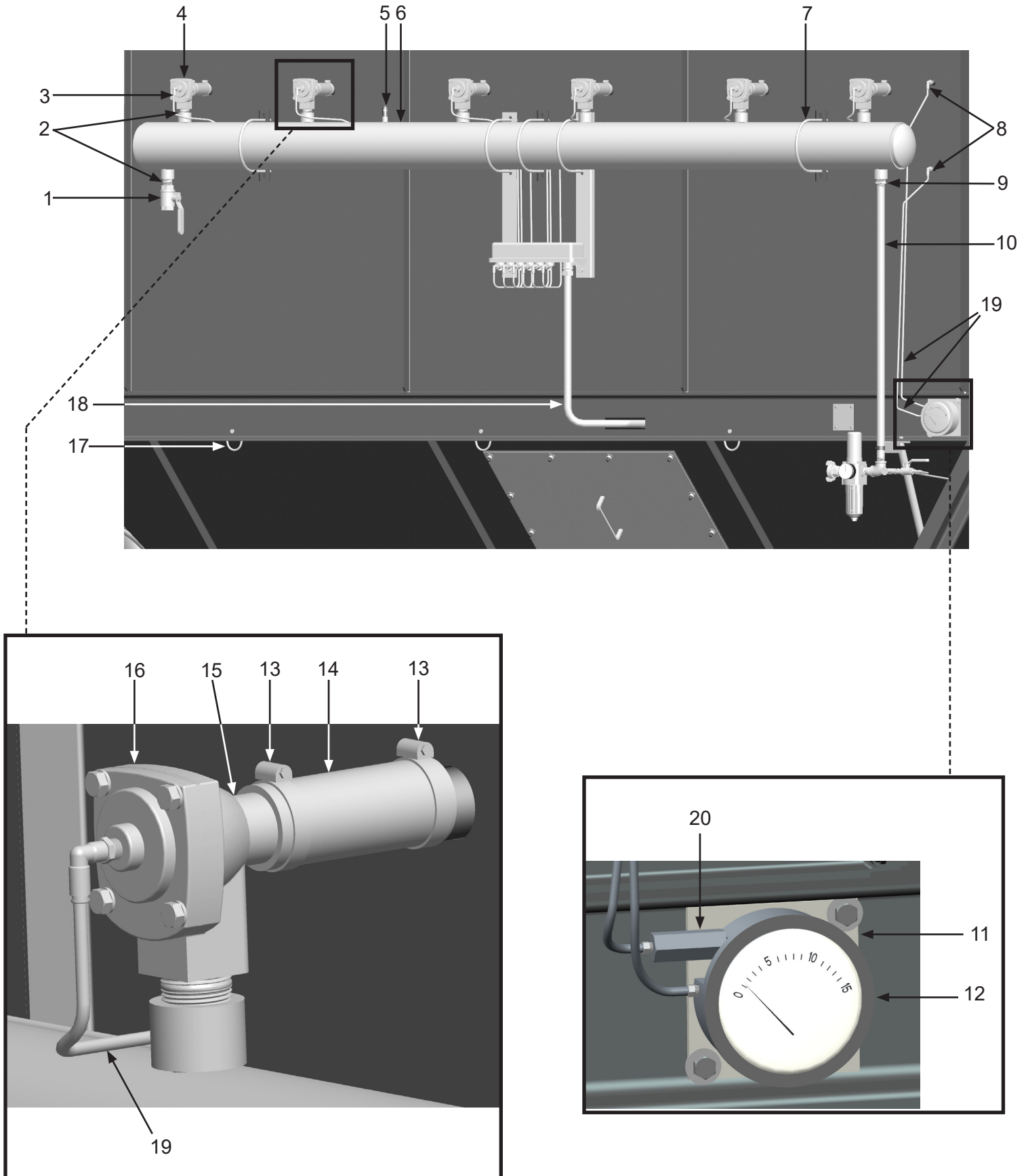
PART NUMBERS AND SCHEMATICS

Figure 16: Pulser System Assembly

Item #	Part #	Description
Fig. 16		
1	1011601	1" Full Port Ball Valve
2	10103318	1" x 2" Pipe Nipple (<i>Seven Required</i>)
3	10103322	1/4" O.D. Black Urethane Tubing (<i>Per Foot</i>)
4	20100579	1/4" O.D. Tube x 1/8" NPT Swivel (<i>Six Required</i>)
5	1028607	1/4" NPT Pressure Relief Valve – 125 PSI
6	10102948	6" Pipe Header
7	10103394	3/8-16 x 6" U-Bolt Assembly (<i>Five Required</i>)
8	20PFBA31095614	1/4" Tube x 1/4" NPT 90° Fitting (<i>Two Required</i>)
9	20PFHA24SB1612	1" x 3/4" Reducing Bushing
10	10103315	3/4" x 36" Pipe Nipple
11	10103608	Magnehelic Differential Pressure Gauge Mounting Bracket
12	10103259	Magnehelic Differential Pressure Gauge Assembly <i>Includes Mounting Hardware</i>
13	10104136	T-Bolt Clamp 1-9/16" X 1-11/16" O.D.
14	10103654	1-1/4" I.D. Marine Hose – 100 PSI (<i>Per Foot</i>)
15	10105207	1" x 3" Toe Nipple (<i>Six Required</i>)
16	10103255	1" Diaphragm Valve (<i>See Figure 29</i>)
17	10103625	D-Ring (<i>16 Required</i>)
18	10103304	3/4" I.D. Flexible Conduit
19	10103322	Urethane Tube - Black - 1/4"
20	10108373	1/8" NPT Inline Air Filter
—	10103954	1" Diaphragm Valve Service Kit (<i>Not Shown</i>)

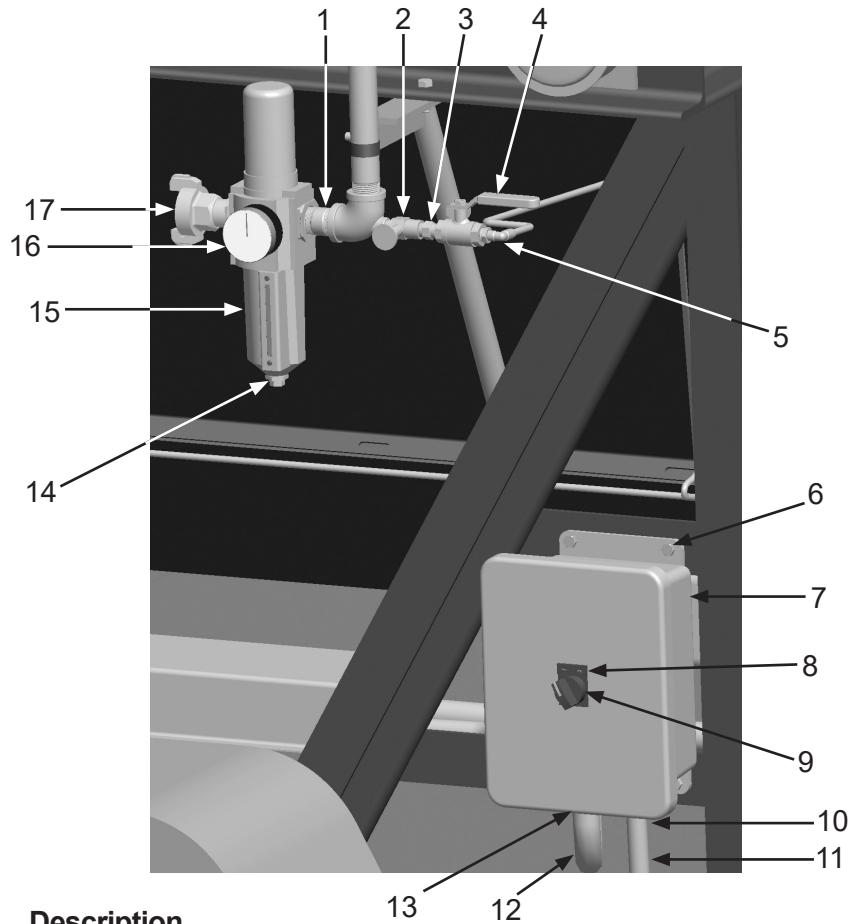
PART NUMBERS AND SCHEMATICS

Figure 16: Pulser System Assembly



PART NUMBERS AND SCHEMATICS

Figure 17: Pulser Regulator and Timer Assembly



Item # Part #

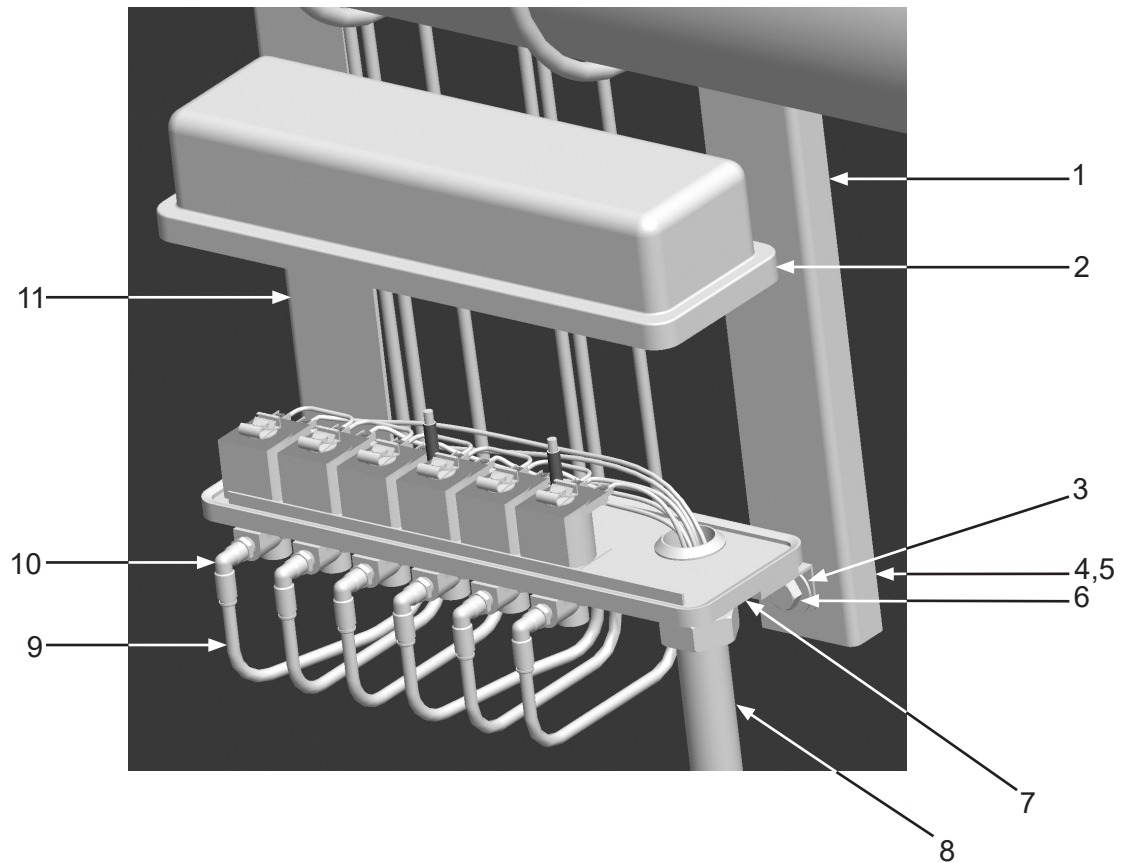
Description

Fig. 17

1	10103317	3/4" x 2" Pipe Nipple
2	10103292	1/4" Needle Valve
3	1017019	1/4" x 1/4" Hex Nipple
4	1080050	1/4" Ball Valve
5	20PFBA31095614	1/4" Tube x 1/4" NPT 90° Fitting (<i>Three Required</i>)
6	20100125	1/4-20 x 3/4" Zinc Hex Bolt (<i>Four Required</i>)
7	10103704	Timer Box with Timer Board
—	10103935	Timer Box Only
—	10103947	Timer Board Only
8	10103414	On/Off Name Plate
9	10103305	2-Way Selector Switch
10	20RST50	Straight Liquid Tite Connection Fitting (<i>Two Required</i>)
11	20RSEL050UL	1/2" UL/UA Seal-Tite Conduit Pipe (<i>Per Foot</i>)
12	10103304	3/4" Flexible Conduit
13	10103303	3/4" Conduit Hub
14	10103952	Filter Auto Drain
15	10103257	Excelon 74 Series Filter/Regulator
16	10103953	Sight Glass Kit
17	10ME1	3/4" Male 2-lug Coupling
—	10103950	Excelon 74 Series Filter/Regulator Service Kit
—	10103951	Filter Element (<i>Not Shown</i>)

PART NUMBERS AND SCHEMATICS

Figure 18: Pulser Solenoid Enclosure Assembly



Item #	Part #	Description
--------	--------	-------------

Fig. 18

1	10102970	Solenoid Enclosure Mount – Right
2	10103256	Solenoid Pilot Valve Enclosure
3	10101942	3/8" Galvanized Flat Washer <i>(Four Required)</i>
4	10101936	3/8" Zinc Lock Washer <i>(Two Required)</i>
5	1012318	3/8-16 Hex Nut
6	1011747	3/8-16 x 1" Bolt
7	10103303	3/4" Conduit Hub
8	10103304	3/4" Flexible Conduit
9	10103322	1/4" O.D. Black Urethane Tubing <i>(Per Foot)</i>
10	20100579	1/4" O.D. Tube x 1/8" NPT Swivel <i>(Six Required)</i>
11	10102969	Solenoid Enclosure Mount – Left
—	10103955	Solenoid Valve <i>(Six Required)</i>
—	10103956	Solenoid Coil <i>(One Required per Solenoid)</i>
—	10103957	Solenoid Service Kit <i>Includes: O-ring, Plunger, Spring, Ferrule</i>

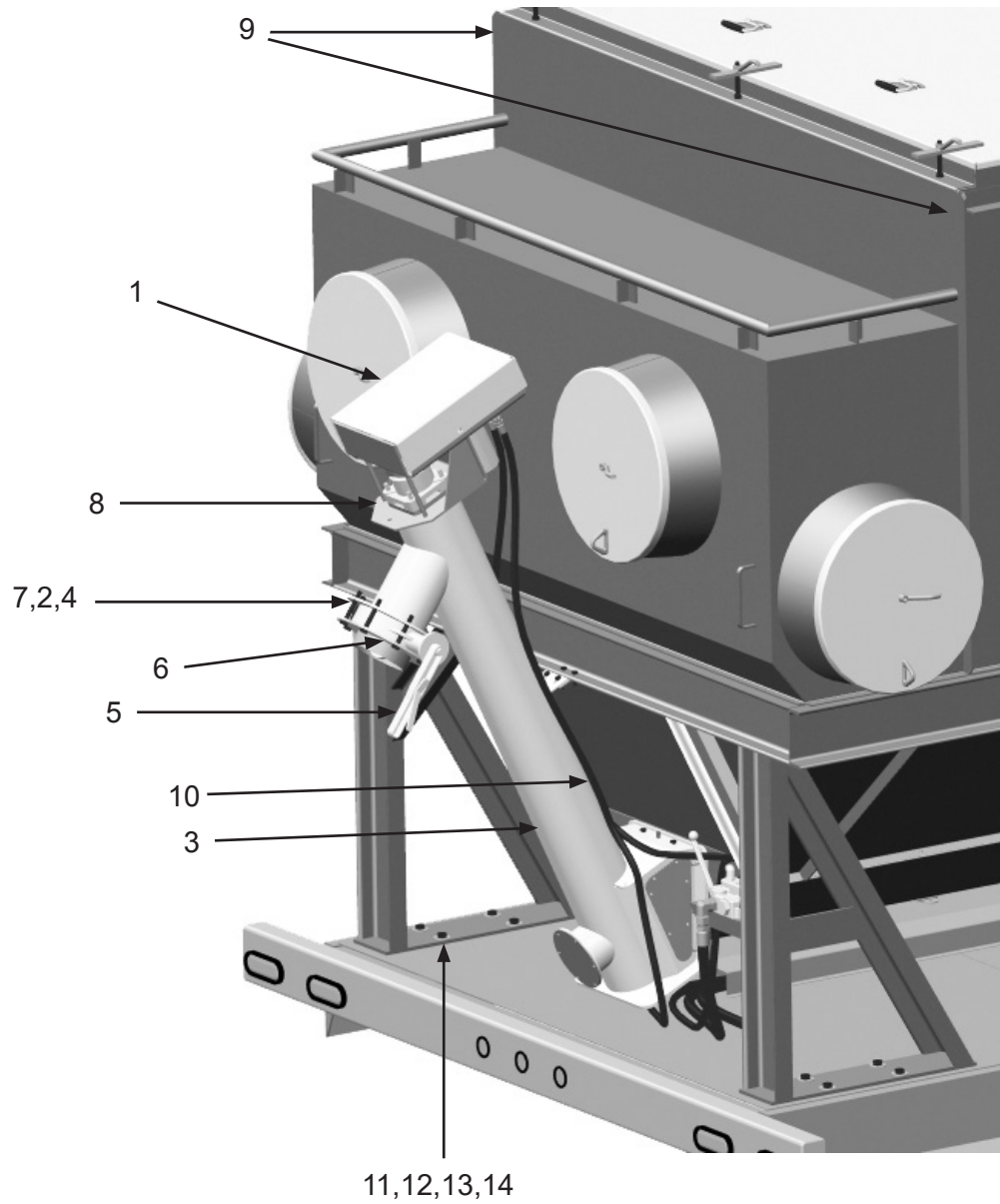
PART NUMBERS AND SCHEMATICS

Discharge Auger Assembly

Item #	Part #	Description
Fig. 19		
1	10103363	Discharge Chain Cover
2	1014022	1/2-13 Hex Nut <i>(18 Required)</i>
3	—	Discharge Auger <i>(See Fig. 20)</i>
4	10100675	1/2" Lock Washer <i>(Eight Required)</i>
5	10103302	6" Series Wafer Butterfly Valve
6	10102971	Discharge Hose Connector
7	10102703	1/2-13 x 3-1/2" Grade 5 Bolt <i>(Eight Required)</i>
8	10104195	Discharge Auger Motor Mounting Bracket
9	10103880	White Conspicuity Tape (Per Inch)
10	10103409	Hydraulic Hose - 1/2" I.D. x 7' 1" - 2000 psi
11	10103397	5/8-11 x 2" Grade 8 Bolt- Zinc <i>(16 Required)</i>
12	10103398	Washer - 5/8" Grade 8 <i>(32 Required)</i>
13	10103399	Lock Washer - 5/8" Hd <i>(16 Required)</i>
14	10103393	Nut - 5/8-11 Grade 8 Zinc <i>(16 Required)</i>
—	10103881	Red Conspicuity Tape (Per Inch)

PART NUMBERS AND SCHEMATICS

Figure 19: Discharge Auger Assembly



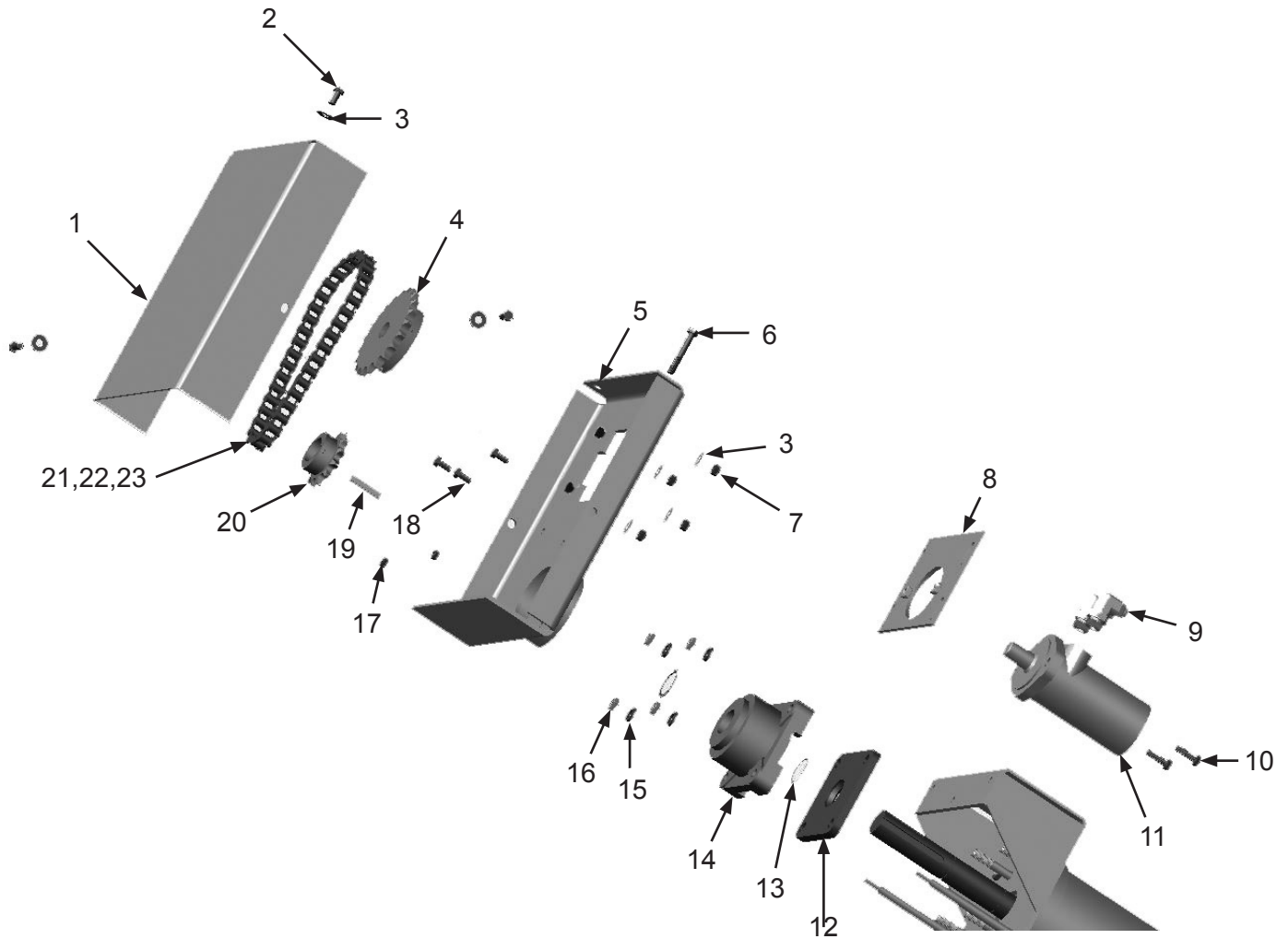
PART NUMBERS AND SCHEMATICS

Discharge Auger Drive Assembly

Item #	Part #	Description
Fig. 20		
1	10103363	Chain Cover
2	10103400	3/8-16 x 3/4" Bolt (<i>Seven Required</i>)
3	10101942	3/8" Galvanized Flat Washer (<i>Three Required</i>)
4	10104217	22-Tooth Sprocket
5	10104197	Chain Cover Base
6	10101933	3/8" - 16 X 2-1/2" Hex Bolt
7	1012318	3/8-16 Hex Nut (<i>Four Required</i>)
8	10104199	Sliding Motor Mount
9	10103308	JIC 8 x SAE 10 90° Elbow (<i>Two Required</i>)
10	10104234	3/8-16 X 1-1/4" Bolt (<i>Two Required</i>)
11	10102887	Hydraulic Motor
12	10102902	Seal Plate
13	10103605	Snap Ring (<i>Two Required</i>)
14	10102903	Thrust Bearing
15	10100675	1/2" Lock Washer (<i>Four Required</i>)
16	1014022	1/2-13 Hex Nut (<i>Four Required</i>)
17	1035046	5/16"- 18 Nut (<i>Two Required</i>)
18	10101346	5/16-18 X 3/4" L GR 5 Bolt (<i>Three Required</i>)
19	10103641	3/8 Key Cut
20	10102886	13-Tooth Sprocket
21	10103392	Connecting Link #60
22	10103391	Cottered Roller Chain #60 (<i>Per Foot</i>)
23	10103614	Offset Link #60
—	10104191	Discharge Auger Chain Kit <i>Includes part #'s 10103392, 10103391, 10103614.</i>
—	10103940	Seal Kit for Hydraulic Motor

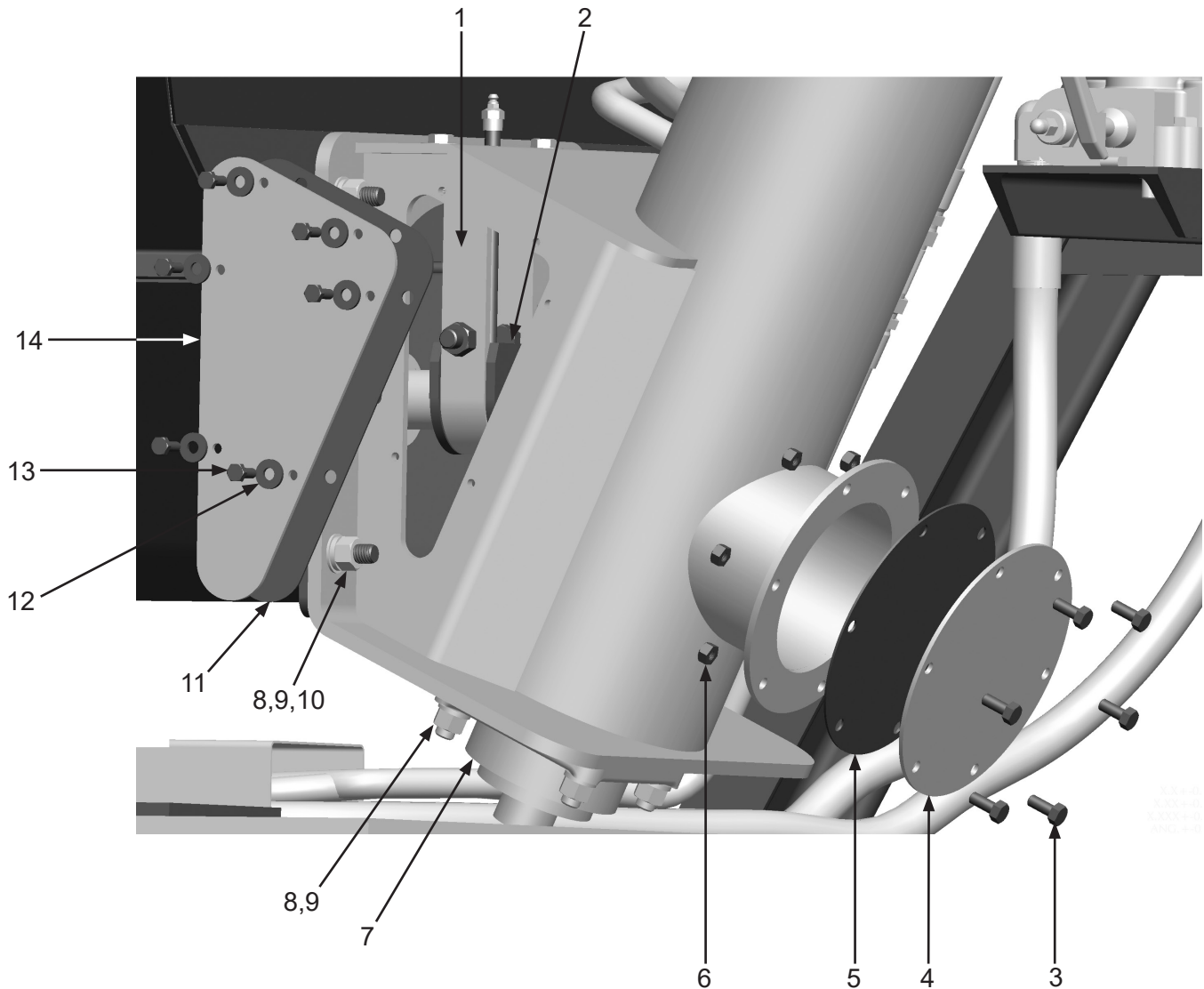
PART NUMBERS AND SCHEMATICS

Figure 20: Discharge Auger Drive Assembly



PART NUMBERS AND SCHEMATICS

Figure 21: Discharge Auger Clean-out Assembly



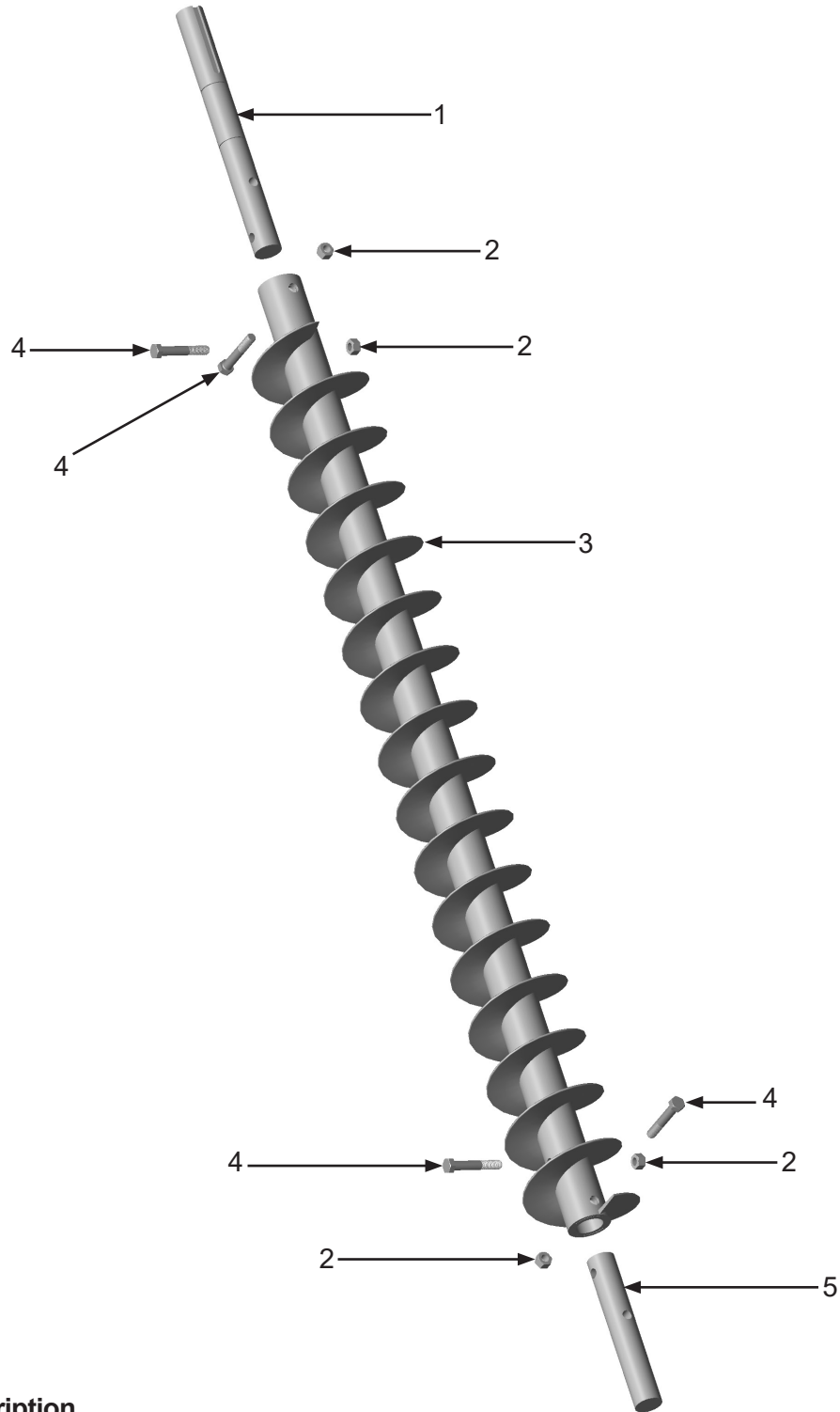
Item #	Part #	Description
--------	--------	-------------

Fig. 21

1	10102896	Bearing Hanger
2	10103413	Bearing
3	10101346	5/16-18 x 3/4" Bolt (<i>Six Required</i>)
4	10103235	Auger Clean-out Cover
5	10103716	Neoprene Auger Clean-out Gasket
6	1035046	5/16-18 Nut (<i>Six Required</i>)
7	10102880	Discharge Auger Lower Bearing Assembly
8	10101941	1/2-13 Galvanized Hext Nut (<i>10 Required</i>)
9	10100675	1/2" Lock Washer (<i>10 Required</i>)
10	10100674	1/2" Flat Washer (<i>6 Required</i>)
11	10103717	Discharge Auger Side Gasket (<i>Two Required</i>)
12	10101940	1/4" Galvanized Flat Washer (<i>12 Required</i>)
13	20100125	1/4-20 x 3/4" Zinc Hex Bolt (<i>12 Required</i>)
14	10103236	Discharge Auger Side Cover (<i>Two Required</i>)

PART NUMBERS AND SCHEMATICS

Figure 22: Discharge Auger



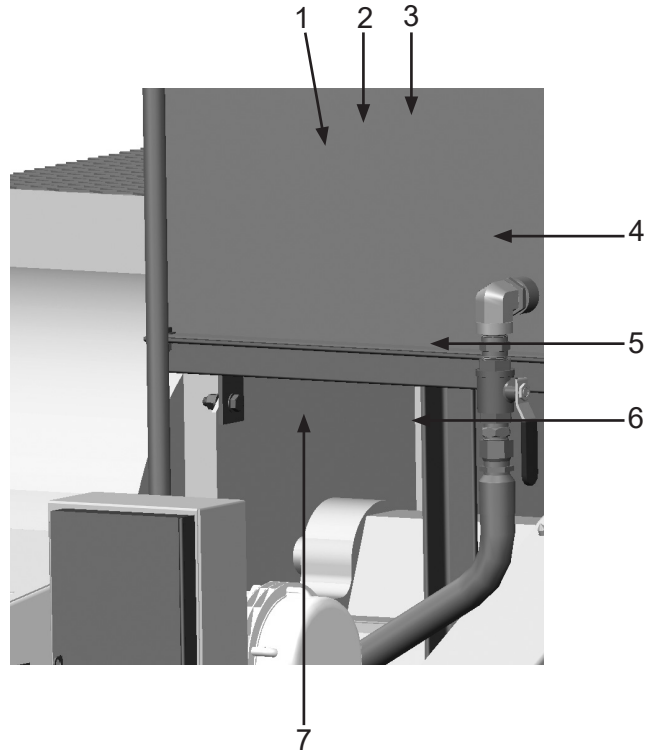
Item #	Part #	Description
--------	--------	-------------

Fig. 22

1	10103306	Drive Shaft
2	10101941	1/2-13 Galvanized Hex Nut (<i>Four Required</i>)
3	10102883	58" x 6" Half Pitch Auger
4	10103401	1/2-13 x 3" Galvanized Bolt (<i>Four Required</i>)
5	10102910	Auger Shaft End

PART NUMBERS AND SCHEMATICS

Figure 23: Hydraulic Pump



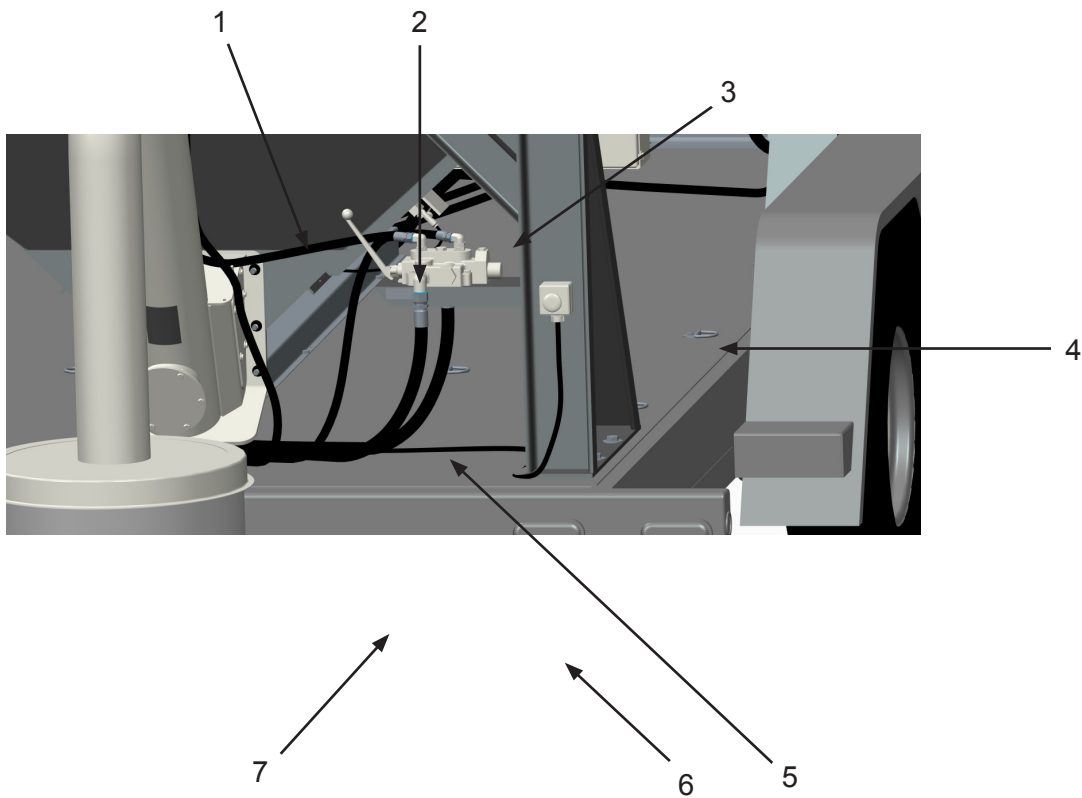
Item #	Part #	Description
--------	--------	-------------

Fig. 23

1	10103615	M10 x 25 mm Zinc Bolt (<i>Two Required</i>)
2	10103610	JIC 12 x JIC 12 90° Elbow
3	10103310	JIC 12 x SAE 12 90° Elbow
4	10103269	2B Series 2.08 CI/REV Gear Pump
5	10103311	JIC 6 x SAE 16 90° Elbow
6	10103406	Hydraulic Hose - 3/4" I.D. x 21 feet - 3045 psi
7	10103405	Hydraulic Hose - 1" I.D. x 9.5 feet - 2000 psi
—	10105869	Flange Gasket

PART NUMBERS AND SCHEMATICS

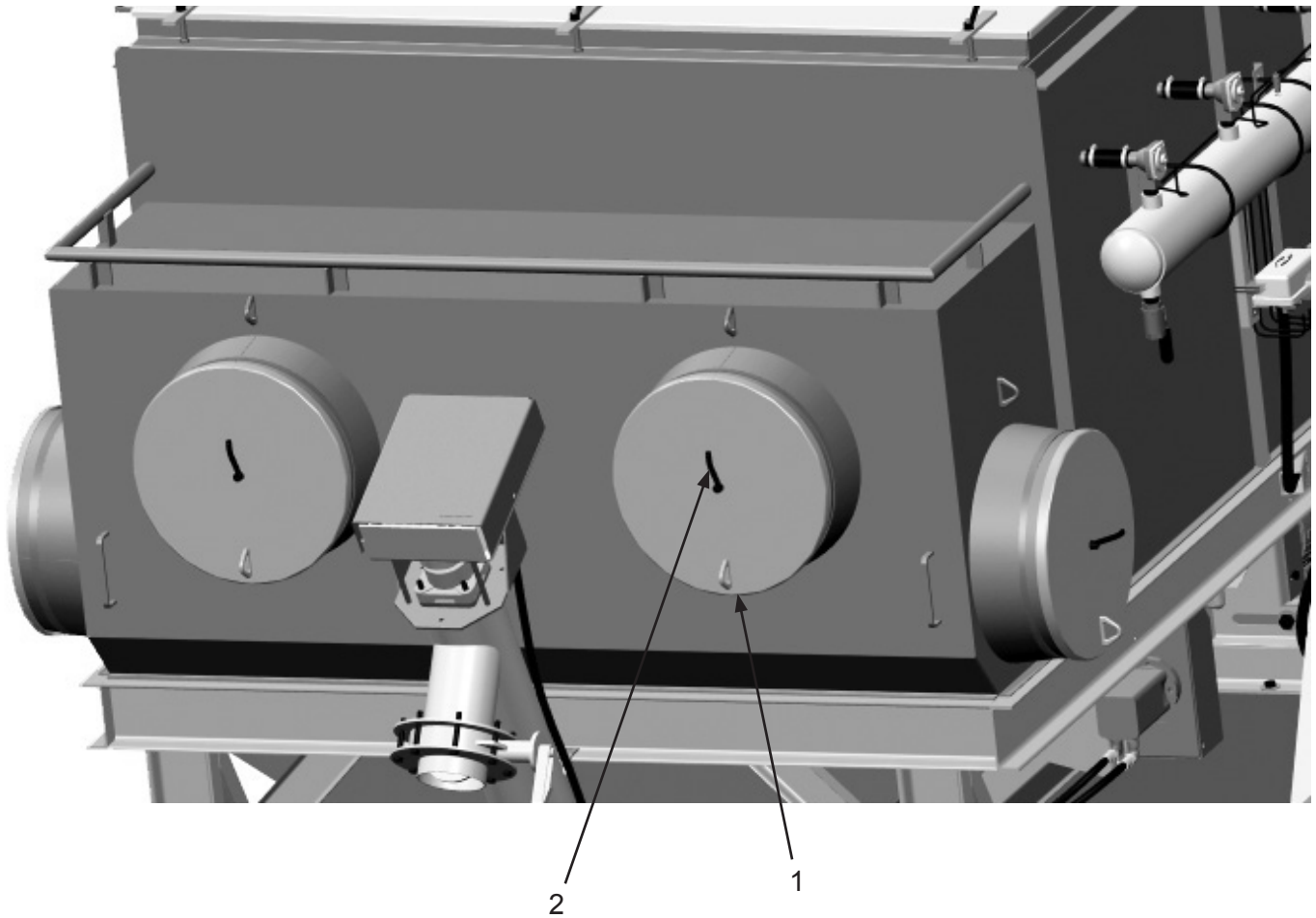
Figure 24: Hydraulic Control Assembly



Item #	Part #	Description
Fig. 24		
1	10103407	Hydraulic Hose - 1/2" X 14' - 2000 psi
2	10103309	JIC 8 x SAE 8 90° Elbow (<i>Two Required</i>)
3	10103409	Hydraulic Hose - 1/2" I.D. x 7' 1" - 2000 psi
4	10103267	Cross Hydraulic Control Valve with Handle
5	10103310	JIC 12 x SAE 12 90° Elbow (<i>Two Required. One not shown</i>)
6	10103406	Hydraulic Hose - 3/4" I.D. x 21' - 3045 psi
7	10104069	Hydraulic Hose - 3/4" I.D. x 17' - 3045 psi
—	10108331	Cross Hydraulic Control Valve Seal Kit
—	10108332	Cross Hydraulic Control Valve Handle Kit
—	10108333	Cross Hydraulic Control Valve Relief Assembly

PART NUMBERS AND SCHEMATICS

Figure 25: Inlet Door Assembly



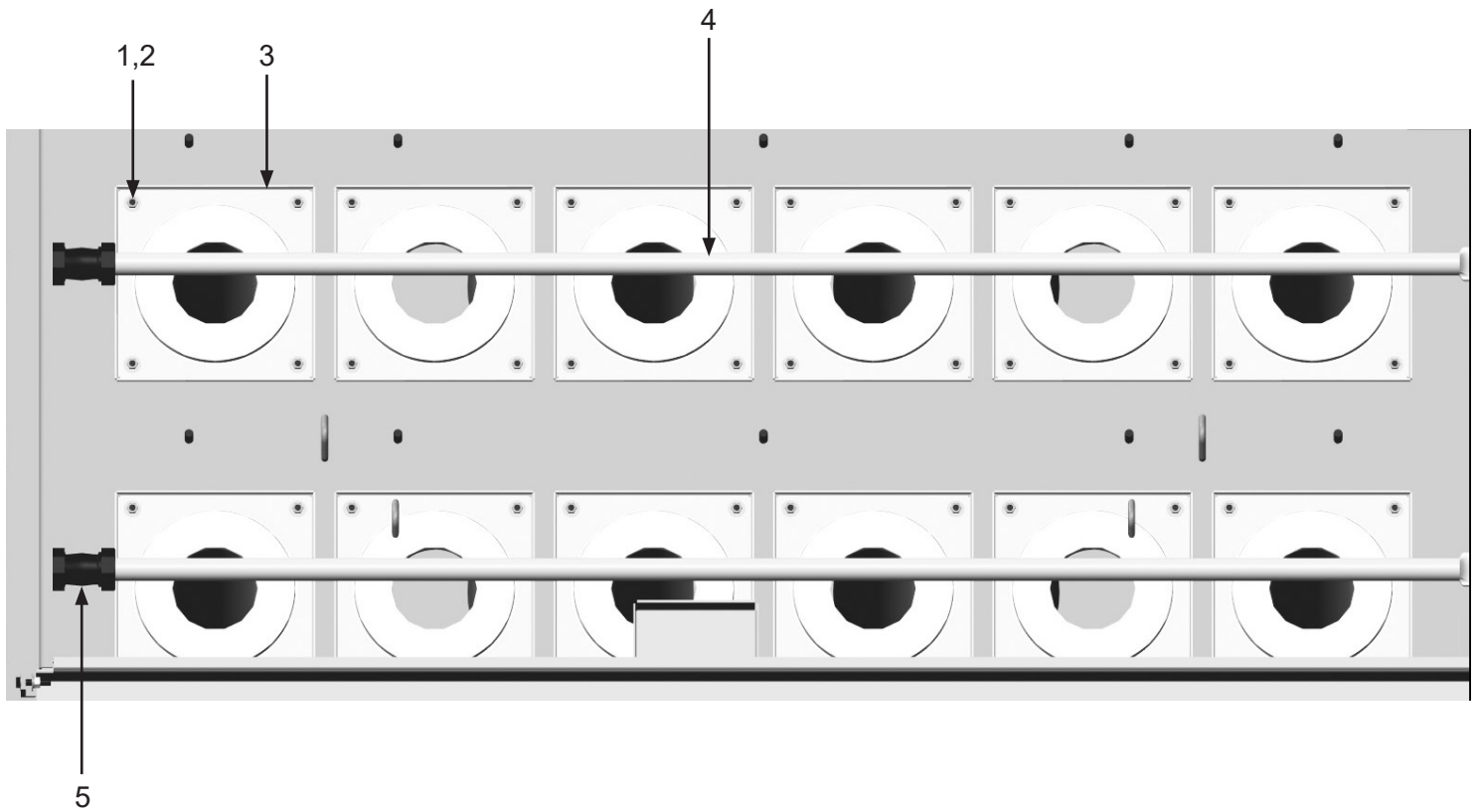
Item #	Part #	Description
--------	--------	-------------

Fig. 25

1	10105945	20" Inlet Cover (<i>Four Required</i>)
2	10105960	3/8-16 Handle Zinc (<i>Four Required</i>)
—	10102339	Camlock Closure - Chain
—	10102410	Spring Snap Hook - 1/4" (<i>Six Required</i>)

PART NUMBERS AND SCHEMATICS

Figure 26: Dust Collector Filter Cartridge Pulsers



Item #	Part #	Description
--------	--------	-------------

Fig. 26

1	10101942	3/8" Flat Washer (48 Required)
2	1012318	3/8" Hex Nut (48 Required)
3	10105939	Filter Bolt-Down (12 Required)
4	10105942	Small Filter Blowpipe (Two Required)
5	10102599	Compression Coupling Assembly (Two Required)

Quantities specified are per hatch opening

See Optional Accessories for Dust Collector Filter Cartridge part numbers

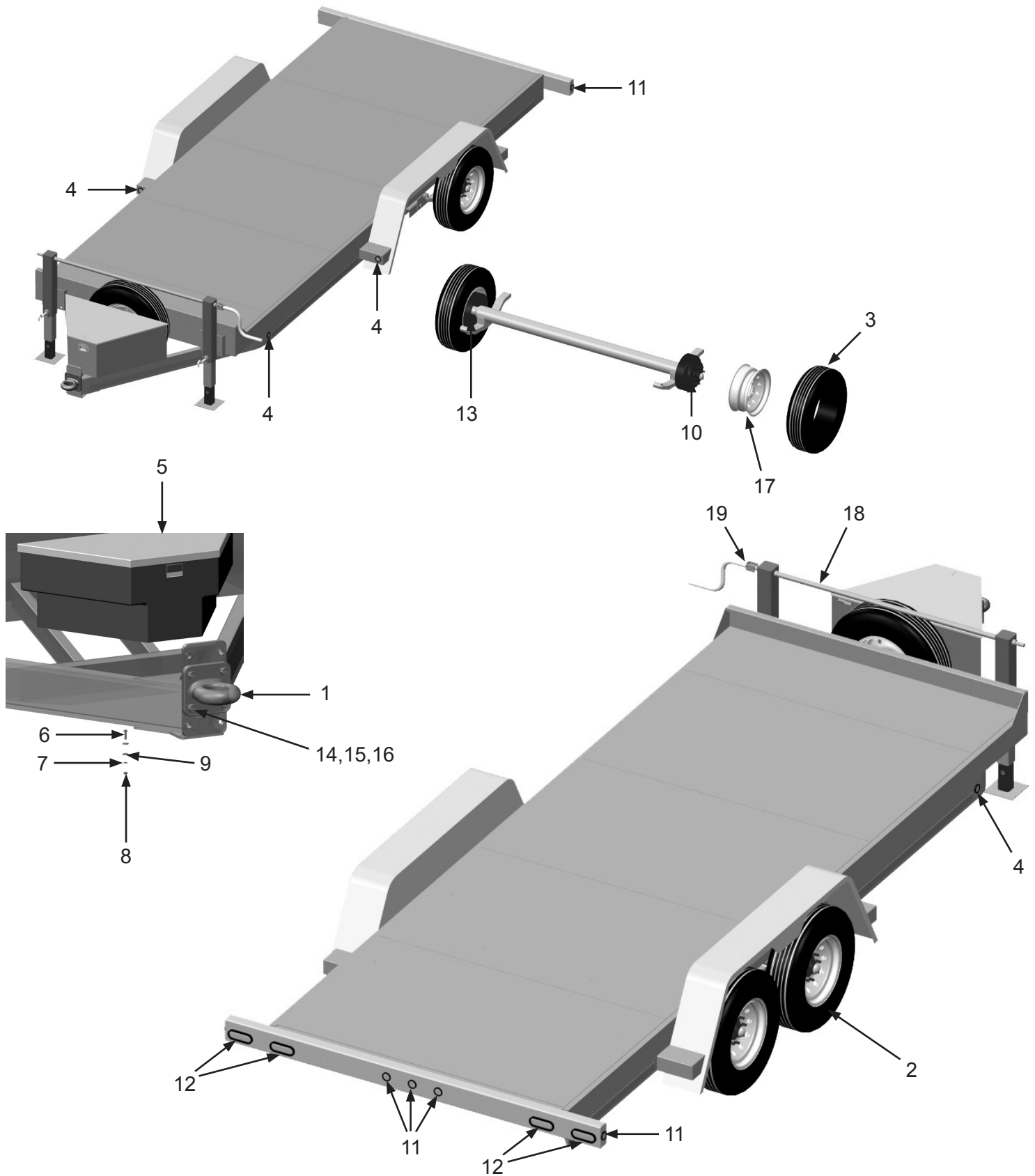
PART NUMBERS AND SCHEMATICS

Trailer

Item #	Part #	Description
Fig. 27		
	10103696	Trailer 7 Ton 18' Long x 81" Wide Deck
1	10104079	Pintle Hitch with Flat Plate
2	10104089	ST235/80R 16" 10-PLY Tire with Rim <i>(Four Required)</i>
3	10104096	ST235/80R 16" 14-PLY Tire <i>(Four Required)</i>
4	10104087	2" Round Amber LED Clearance Light <i>(Four Required)</i>
5	10103797	Tool Box (optional)
6	1012154	1/4-20 x 1" Bolt <i>(Five Required) (optional)</i>
7	1012153	1/4" Lock Washer <i>(Five Required) (optional)</i>
8	10101347	1/4-20 Hex Nut <i>(Five Required) (optional)</i>
9	10101940	1/4" Washer <i>(Ten Required) (optional)</i>
10	10106087	Left-Hand Electric Brake Assembly <i>(Two Required)</i>
11	10104086	2" Round Red LED Clearance Light <i>(Five Required)</i>
12	10104084	Red LED Oval Tail Light <i>(Four Required)</i>
13	10106088	Right-Hand Electric Brake Assembly <i>(Two Required)</i>
14	10105746	5/8 x 2-1/2" Gr 8 Bolt <i>(Four Required)</i>
15	10105747	5/8 Reverse Lock Nut <i>(Four Required)</i>
16	10103398	5/8" Flat Washer <i>(Four Required)</i>
17	10107126	16 x 6 8-Hole White Rim <i>(Four Required)</i>
18	10107218	Jack Stand Assembly
19	10107329	Sidewind Crank with Hardware
—	10104081	Breakaway Kit
—	10104083	Wire Harness
—	10104080	3/8" x 35" Chain with Hook
—	10104930	12V DC Breakaway Battery Kit
—	10105826	Redline 12V - 5AH Battery Sealed
—	10105829	Cable with Plug
—	109V582	Operator's Manual - Behnke Trailer

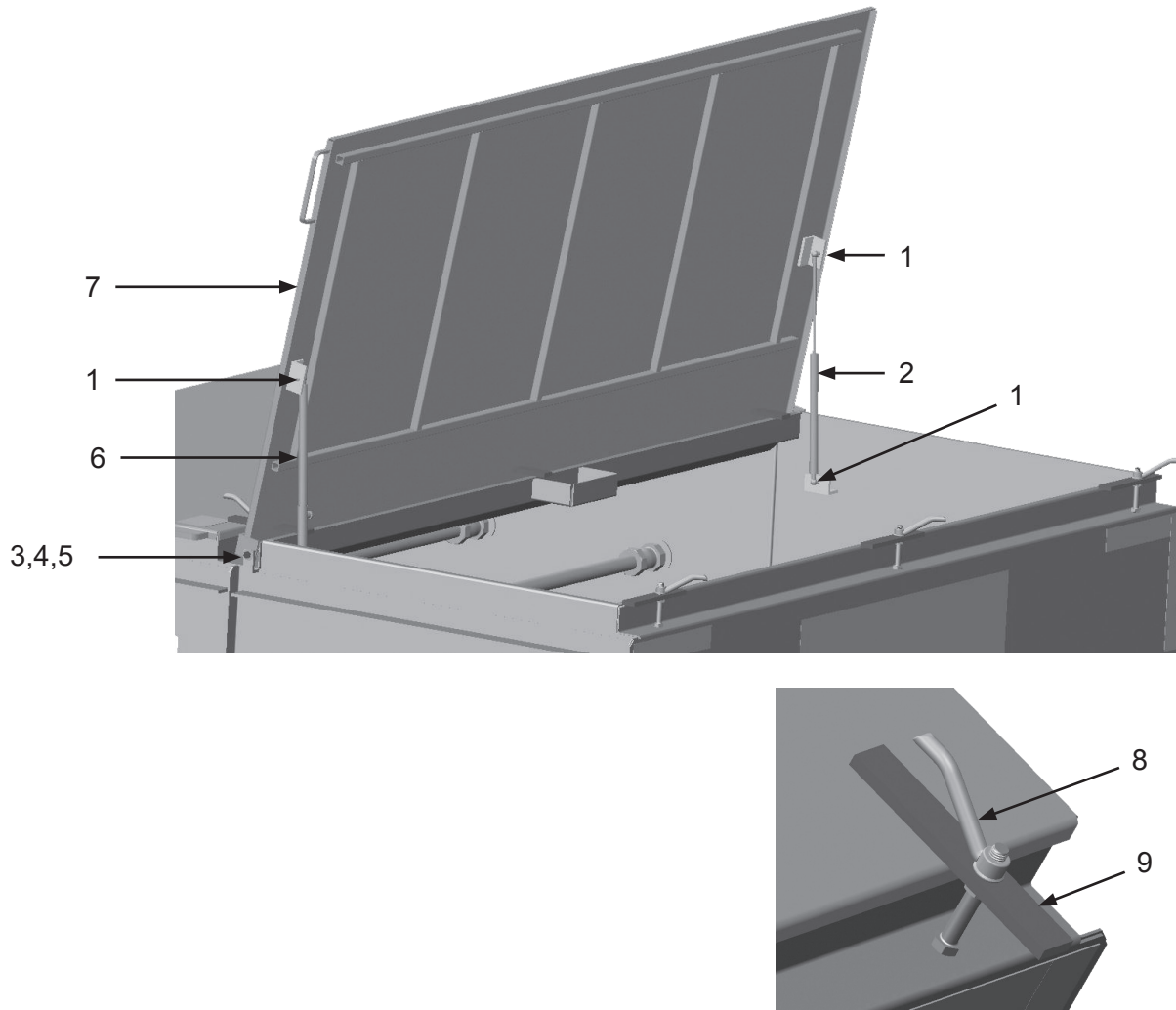
PART NUMBERS AND SCHEMATICS

Figure 27: Trailer



PART NUMBERS AND SCHEMATICS

Figure 28: Dust Collector Filter Cartridge Hatch Door



Item #	Part #	Description
--------	--------	-------------

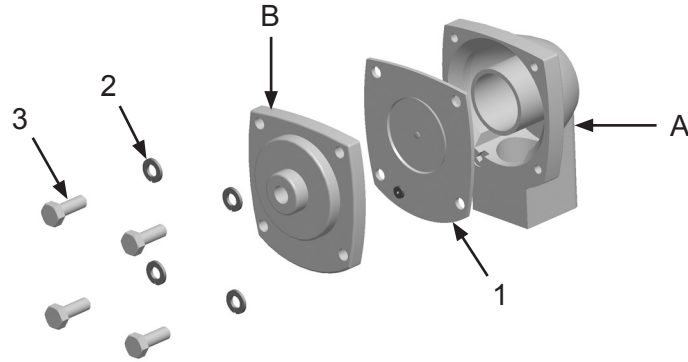
Fig. 28

1	1035046	5/16-18 Hex Nut <i>(Four Required)</i>
2	10103454	Non-Locking Gas Spring
3	1028617	3/8-16 X 1-3/4" Shoulder Bolt <i>(Two Required)</i>
4	10101942	3/8" Flat Washer <i>(Four Required)</i>
5	1012318	3/8"-16 Hex Nut <i>(Two Required)</i>
6	10103455	Locking Gas Spring
7	10102916	Hopper Lid
8	10103395	1/2-13 Zinc Plated Handle <i>(Three Required)</i>
9	10104377	Latch Bar <i>(Three Required)</i>

Quantities specified are per hatch opening

PART NUMBERS AND SCHEMATICS

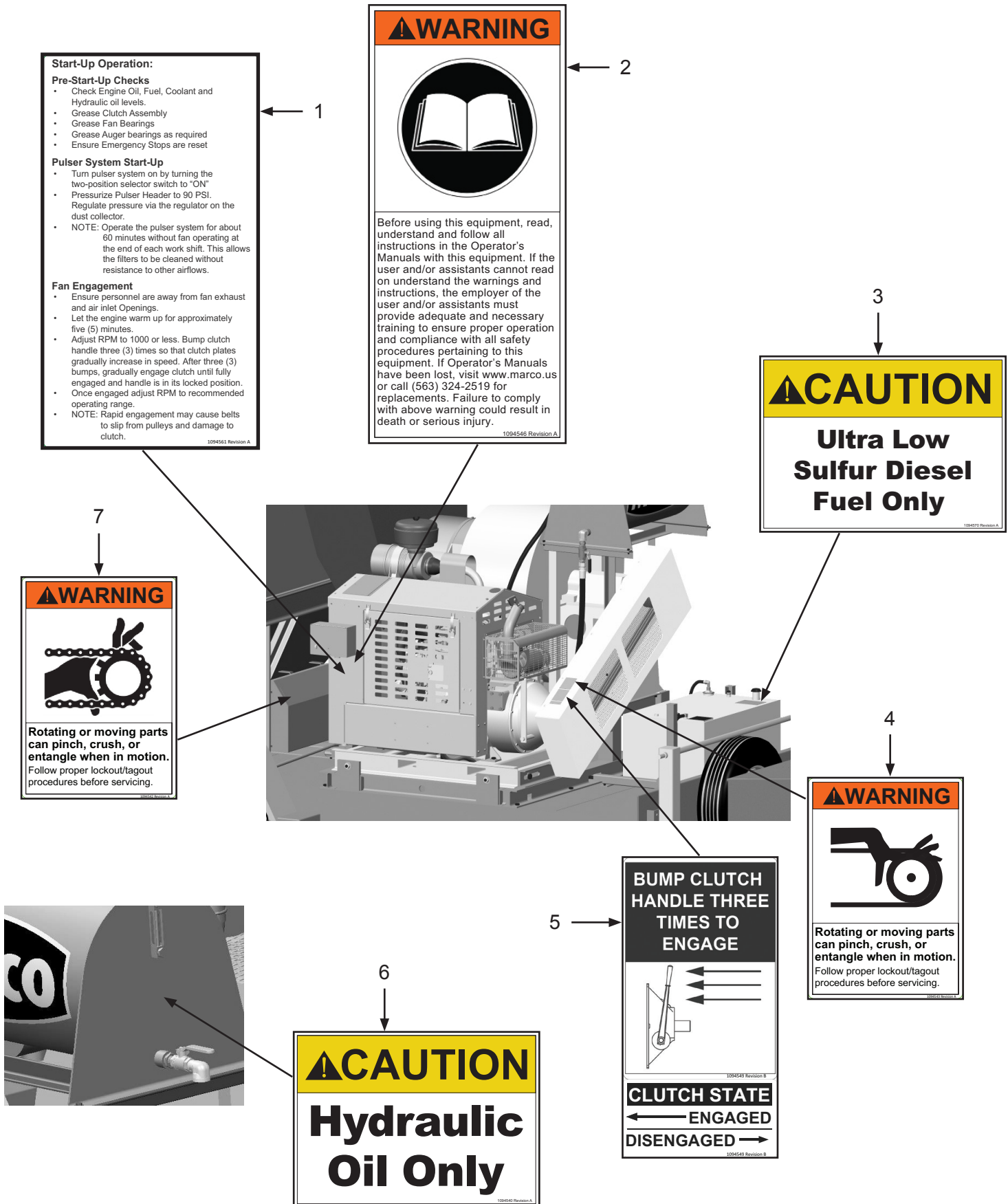
Figure 29: Diaphragm Valve



Item #	Part #	Description
Fig. 29		
—	10103255	1" Diaphragm Valve – Complete <i>(Three Required)</i> <i>Includes Items: A,B,1,2,3</i>
1	10103954	1" Diaphragm Valve Service Kit
2	1012153	1/4" Lock Washer <i>(Four Required)</i>
3	20101232	M6 x 1 x 14 HHCS <i>(Four Required)</i>
—	10103954	1" Diaphragm Valve Service Kit <i>(Not Shown)</i>

PART NUMBERS AND SCHEMATICS

Figure 30: Hazard Identification Decals



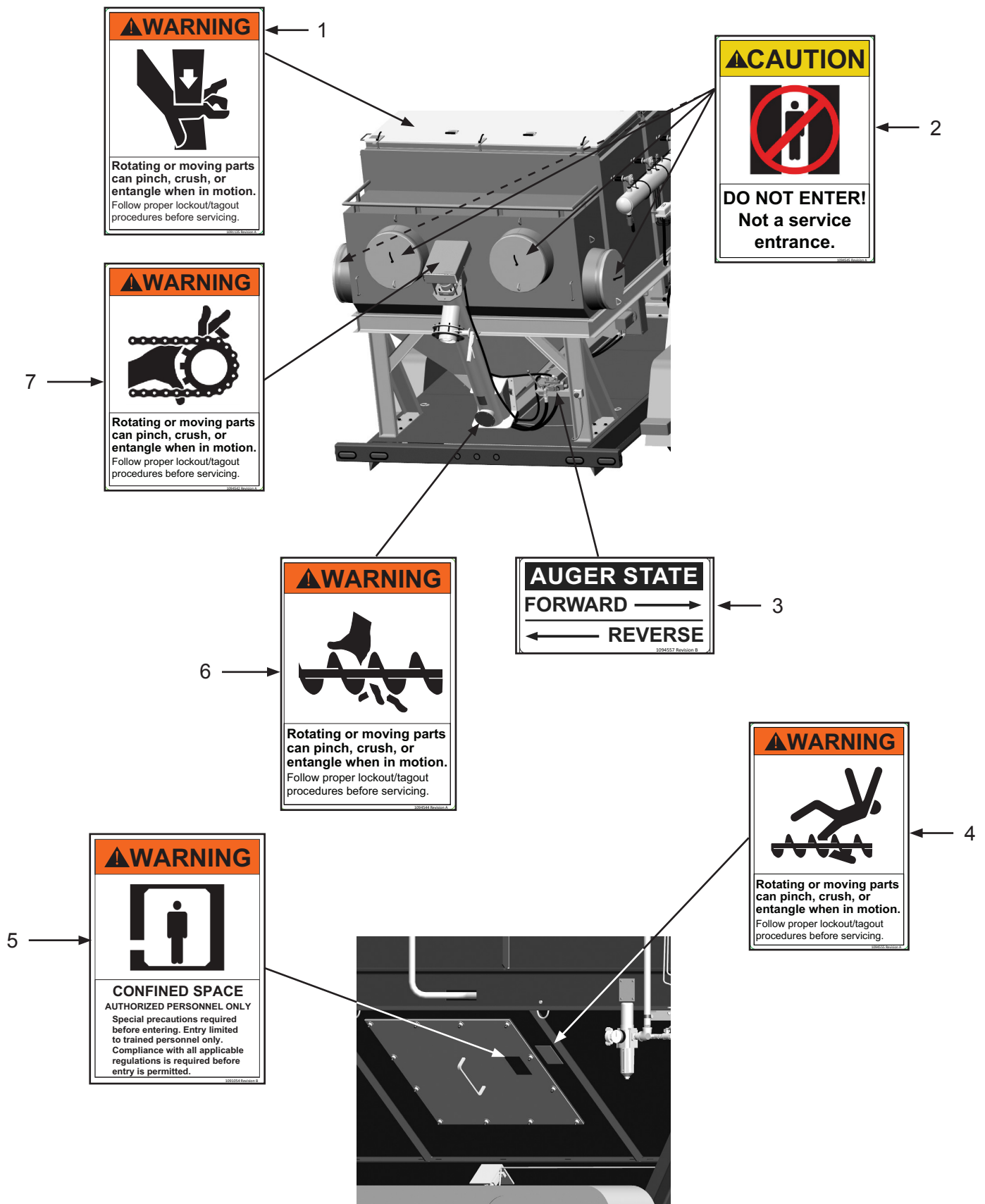
PART NUMBERS AND SCHEMATICS

Figure 30: Hazard Identification Decals

Item #	Part #	Description
Fig. 30		
1	1094561	Start-Up Operation Decal
2	1094546	Read Manual Warning Decal
3	1094570	Ultra Low Sulfur Diesel Fuel Only Caution Decal
4	1094543	Rotating or Moving Parts Warning Decal
5	1094549	Clutch State Decal
6	1094540	Hydraulic Oil Only Caution Decal
7	1094542	Rotating or Moving Parts Warning Decal

PART NUMBERS AND SCHEMATICS

Figure 31: Hazard Identification Decals



PART NUMBERS AND SCHEMATICS

Figure 31: Hazard Identification Decals

Item #	Part #	Description
Fig. 31		
1	1091135	Rotating or Moving Parts Warning Decal
2	1094545	Do Not Enter Caution Decal
3	1094557	Auger State Decal
4	1094555	Rotating or Moving Parts Warning Decal
5	1091054	Confined Space Warning Decal
6	1094544	Rotating or Moving Parts Warning Decal
7	1094542	Rotating or Moving Parts Warning Decal

OPTIONAL ACCESSORIES



Part Numbers

DUST COLLECTOR FILTER CARTRIDGES					
	I.D.	O.D.	Material	Length	Serial Number
10103499	8.38"	12.75"	85/15 High Density	35"	001-003
10105256	8.38"	12.75"	85/15 Reduced Pleat	35"	001-003
10103945	8.38"	12.75"	Fire Retardant	35"	001-003
1010008004	8.38"	12.75"	HEPA	35"	001-003
10103964	8.38"	12.75"	Spunbond	35"	001-003
10105973	4.87"	9.22"	85/15 High Density	35"	004 –
10106218	4.87"	9.22"	85/15 Reduced Pleat	35"	004 –
10105974	4.87"	9.22"	Fire Retardant	35"	004 –
101569046	4.87"	9.22"	HEPA	35"	004 –
10105980	4.87"	9.22"	Spunbond	35"	004 –



Part Numbers

DUCT HOSE			
	I.D.	Length	Pitch
10DH2025HD	20"	25 Feet	1-1/2" Heavy-Duty
10DH2050HD	20"	50 Feet	1-1/2" Heavy-Duty



Part Numbers

DUCT HOSE COUPLING AND CLAMPS		
	I.D.	Length
1017120	20"	Coupling
10DH062602000	20"	Screw Clamp

OPTIONAL ACCESSORIES



Part Numbers

3/4" I.D. X 1-1/4" O.D. AIR HOSE					
	Length	Hose I.D.	Hose O.D.	Working Pressure	Hose Cover Color
10AH034	Per Ft.	3/4"	1-1/4"	200 PSI	Red



Part Numbers

3/4" I.D. X 1-1/4" O.D. AIR HOSE WITH COUPLINGS INSTALLED							
	Length	Hose I.D.	Hose O.D.	Working Pressure	Hose Cover Color	Couplings	Band Clamps
10AH034AC	50 Ft.	3/4"	1-1/4"	200 PSI	Red	10HE1	10AHCL1



Part Numbers

MALE HOSE END COUPLING AND GASKET FOR 3/4" I.D. AIR HOSE						
	Hose I.D.	Material	Coupling Style	GASKET		
				Rubber Gasket	Gasket I.D.	Gasket O.D.
10HE1	3/4"	Plated Iron	2-Lug	10UG2	3/4"	1-3/8"

LITERATURE REFERENCES

Dustmaster® 28,000 CFM Tier 4 Diesel Dust Collector

106M144	Part Numbers & Schematics Guide – Dustmaster® 18,000 CFM Tier 4 Diesel Dust Collector
1090144	Operator's Manual – Dustmaster® 18,000 CFM Tier 4 Diesel Dust Collector
109V565	Operator's Manual - Perkins® Engine
109V037	Operator's Manual – Dynamic Fan Corporation
109V040	Operator's Manual - Hydraulic Motor
109V582	Operator's Manual - Behnke Trailer

MAINTENANCE NOTES

[illegible]



ALLREDI THERE

Serving these industries: Bridge, Pipeline, Tank & Tower, Concrete Services, Rail, Shipyard & Marine, Pools & Fountains, and Foundry

UNITED STATES

Pasadena, TX (Headquarters)
844.361.7038

Beaumont, TX
409.722.1284

Bristol, PA
215.826.8080

Corpus Christi, TX
361.887.2038

Davenport, IA
563.324.2519

Deer Park, TX
(Service & Rental Location)
281.930.0905

Duluth, GA
800.535.4564

Gonzales, LA
225.647.7575

Harvey, LA
504.367.8090

Houma, LA
985.580.4273

Lafayette, LA
337.267.1440

Theodore, AL
251.338.7525

CANADA

Calgary, Alberta
403.279.1924

Coquitlam, BC
604.464.6979

Edmonton, Alberta
780.468.2588 (Manus)
780.425.5510 (Mod-U-Blast)

Hamilton, Ontario
905.527.6000 / 888.794.5665

Mississauga, Ontario
905.890.5837

Winnipeg, Manitoba
204.256.3324

WWW.ALLREDI-US.COM / 800.252.7848

WWW.ALLREDI-CA.COM / 800.661.3842

Allredi™ and Marco® are registered trademarks of Allredi, LLC.
Mod-U-Blast® is a registered trademark of Allredi Blast & Abrasives Canada, Inc.
All other brand names or marks are used for identification purposes and are trademarks of their respective owners.

ALLREDI™

Literature #106M144_1/2/2024