



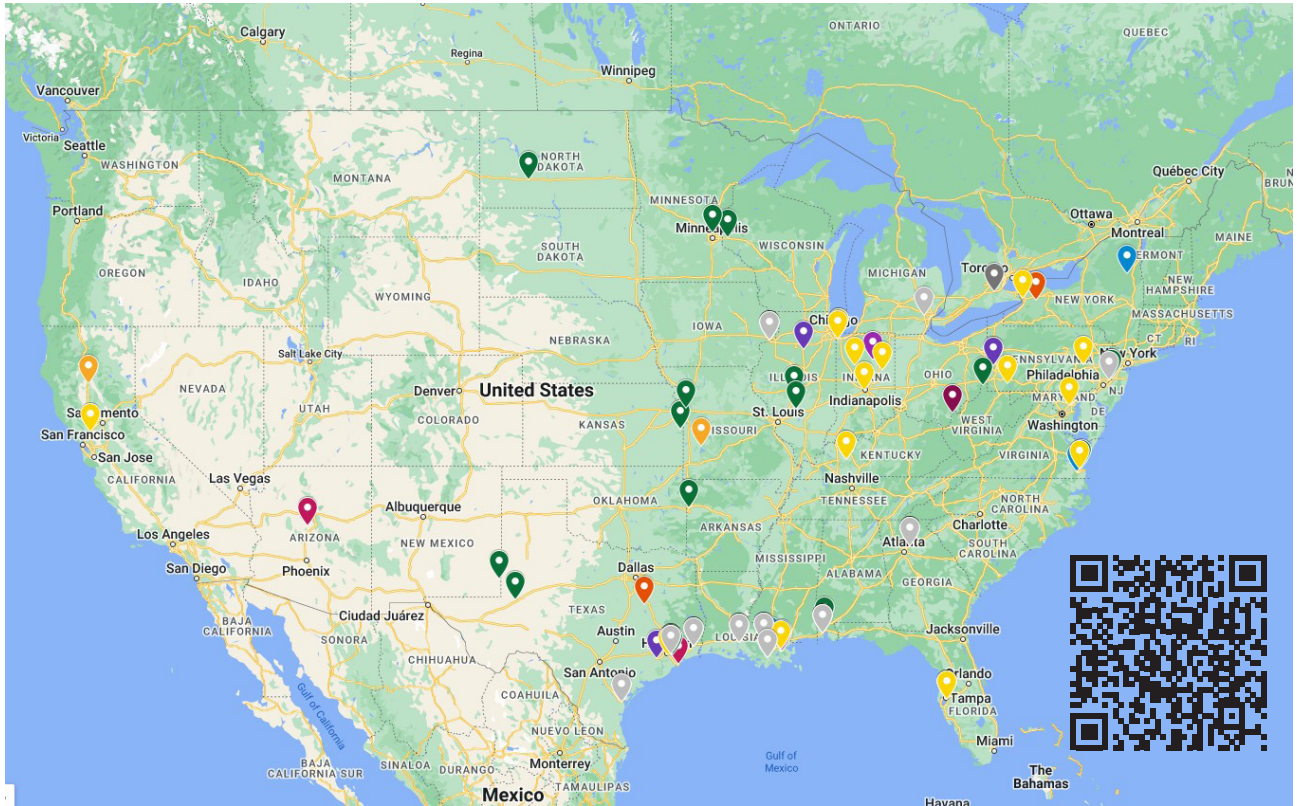
ABRASIVES PRODUCT CATALOG

“Your right-now supplier”

888-77-ALLREDI www.allredi-us.com

Online Interactive Map

Click the QR code for an interactive breakdown of plant and warehouse shipping locations for all of the abrasives that Allredi has to offer.



Allredi Shipping Services

40+ Nationwide Shipping Locations

Allredi ships more than 14,000 truckloads each year, direct to site, across the nation.

Dedicated Logistics Team

Allredi, partnered with thousands of carriers nationwide, manages and monitors every aspect of your shipment saving you time and money.

Cost Savings Approach

Allredi strategically combines our own warehousing and fulfillment facilities alongside supplier-direct shipments to provide fast, consistent delivery at lower prices.

Inhaling dusts from abrasive blasting may result in serious injury, disease, or death.

According to OSHA, only a Type CE NIOSH-certified blasting airline respirator with positive pressure blasting helmet should be used for abrasive blasting.

Allredi Abrasive Options

Allredi is like nothing else in the industry. We offer a wide range of abrasives to meet even the toughest requirements. Our selection of abrasives can remove the toughest coating or polish the most delicate surface. We work with the top abrasive manufacturers in the industry to make sure we offer the best products at the best price.



MINERAL ABRASIVES

Mined mineral abrasives such as alluvial garnet, hard rock garnet, or staurolite are angular, low-dusting abrasives with a high Mohs hardness that cut through old coating, mill scale, and rust faster to increase production rates.

ORGANIC ABRASIVES

Marco offers a variety of organic abrasives with low bulk density, traditionally used for fire restoration and graffiti removal.



RECYCLED ABRASIVES

Crushed glass is an angular abrasive created from recycled glass. This abrasive cuts through mill scale and rust at a lower psi than other abrasives.



BY-PRODUCT ABRASIVES

Coal slag and copper slag are the most popular abrasive options available. The higher bulk density and angular shape provide fast-cutting option.



STEEL ABRASIVES

Carbon steel or and stainless steel shot and grit abrasives one of the most aggressive recyclable abrasive options available. With the highest bulk density and hardness, steel abrasives easily remove thick coatings, heavy rust, and mill scale.

WHAT'S THE BEST ABRASIVE TO REMOVE YOUR COATING?

Every abrasive has different attributes. Which one is right for your application? It is important to know what type of coating you are removing. This easy-to-use guide will give you a starting point to identify abrasive types suitable for your coating. When selecting an abrasive, it is important to answer 4 key questions:

- What type of coating do you need to remove?
- Do you have environmental requirements on your worksite?
- Do you want to recycle your abrasive?
- What degree of cleanliness of the surface is required?

	Acrylic or Enamel	Urethane	Epoxy	Phenolic Epoxy	Polyurea
Coating Characteristics					
	Cohesive, some flexibility	Flexible	Hard and Brittle	Hard and durable	Rubbery and flexible
General Dry Film Thickness					
	0.5-4 mils	3-8 mils	8-20 mils	20-80 mils	16-30 mils
Suitable Abrasive Types					
10X Superoxalloy	x	x	x	x	x
Aluminum Oxide	x	x	x	x	x
Carbon Steel Grit		x	x	x	x
Carbon Steel Shot					
Coal Slag	x	x	x	x	x
Copper Slag		x		x	x
Corn Cob					
Crushed Glass	x	x	x		
Garnet, Hard Rock		x	x	x	x
Garnet, Alluvial	x	x	x		
Glass Bead	x				
Starblast™ Staurolite	x	x	x		
Surecut Edge™	x	x			
Surecut Velocity™	x	x	x		
Walnut Shell	x				

Performance results will vary based on blasting conditions. This chart intended for reference only.

10X SUPEROXALLOY



DESCRIPTION:

10X superoxalloy abrasives is a 100% recycled material that is effective in a wide range of applications including hard or challenging coatings. The tempered particles generate very little dust, perform well at higher blast pressures, and leave a clean surface with low embedment and uniform profile. The fast cutting action of superoxalloy abrasives lead to lower consumption per square foot, reduced disposal costs, and faster turn around on critical assets.

MOST COMMONLY USED FOR:

- Ship & Railcar Manufacturing/Maintenance
- Water Towers, Tanks, Bridges
- Steel/Stainless Steel, Non-Ferrous Fabrication
- SSPC AB1, CARB, or MIL-A 22262B specified applications
- Wet/Vapor Blasting
- Thick Coatings
- Concrete

PHYSICAL CHARACTERISTICS

Shape: Angular/Rounded

Hardness: 7-8 Mohs

Bulk Density: 90-110 lbs./cu.ft.

Specific Gravity: 2.7-2.9 g/cc

Free Silica: Less than 0.1%

Type: Manufactured

Recyclability: High

Surface Etching: High

PACKAGING OPTIONS

Bulk Trucks: Available

Bulk Bags: 2,000 lbs.

Bags: 50 lbs.

RECOMMENDED BLASTING CONDITIONS

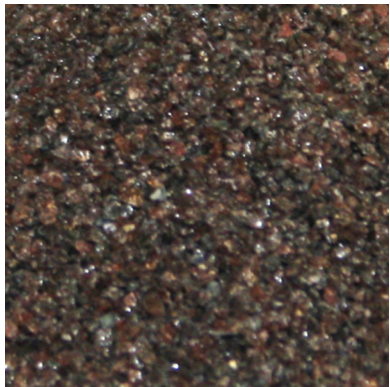
Nozzle Pressure: 90-130 psi

Distance from Surface: 6-36 inches

SHIPPING POINTS:

Davenport, IA | Pasadena, TX | Duluth, GA | Wabash, IN

BROWN FUSED ALUMINUM OXIDE



DESCRIPTION:

Aluminum Oxide is used when an application is sensitive to rusting caused by ferric contamination and requires an extremely aggressive, hard abrasive.

MOST COMMONLY USED FOR:

- Stainless Steel Fabrication
- Internal Pipe Blasting
- Cleaning of Non-Ferrous Castings
- Precision Aviation & Turbine Blasting
- Automotive Brake Pad Manufacturing

PHYSICAL CHARACTERISTICS

Shape: Angular

Hardness: 8-9 Mohs

Bulk Density: 105-125 lbs./cu.ft.

Specific Gravity: 3.8 g/cc

Free Silica: Less than 1%

Type: Manufactured

Recyclability: High

Surface Etching: High

PACKAGING OPTIONS

Bulk Bags: 2,000 lbs.

Drums: 400 lbs.

Bags: 50 lbs.

RECOMMENDED BLASTING CONDITIONS

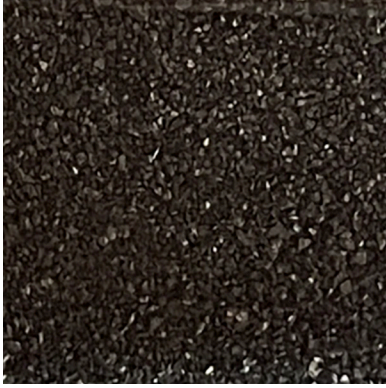
Nozzle Pressure: 80-110 psi

Distance from Surface: 6-36 inches

SHIPPING POINTS:

Davenport, IA | Duluth, GA | Gonzales, Harvey, Houma, LA
Lafayette, LA | Pasadena, TX | Theodore, AL | Aliquippa, PA
Rosenberg, TX | Tonica, IL (Virgin Material Only)

CARBON STEEL GRIT



DESCRIPTION:

Carbon Steel Grit is a general-purpose abrasive used to remove thick coatings, heavy rust, and mill scale. Its angular shape cleans by aggressively cutting away at the surface leaving a uniform surface profile.

MOST COMMONLY USED IN/FOR:

- Railcar Manufacturing/Maintenance
- Mobile Steel Grit Recycling Systems, Blast Rooms
- Bridge, Wind Tower, Ship Maintenance

PHYSICAL CHARACTERISTICS

Shape: Angular

Hardness: 40-60+ HRC

Bulk Density: 230-275 lbs./cu.ft.

Specific Gravity: Varies

Free Silica: No Free Silica

Total Chlorides: No Chlorides

Type: Manufactured

Recyclability: Very High

Surface Etching: High

PACKAGING OPTIONS

Drums: 1,500 | 1,700 | 2,000 lbs.

Bags: 50 lbs.

RECOMMENDED BLASTING CONDITIONS

Nozzle Pressure: 100-125 psi

Distance from Surface: 18 inches

SHIPPING POINTS:

Bristol, PA | Davenport, IA | Gonzales, Harvey, LA | Pasadena, TX
Theodore, AL | **Canton, MI**

CARBON STEEL SHOT



DESCRIPTION:

Carbon Steel Shot is a general-purpose abrasive used to remove mill scale and molding sand. Its high bulk density, low friability, consistent sizing, and low dust levels provide superior production rates.

MOST COMMONLY USED IN/FOR:

- Wheel Blast Equipment
- Closed Circuit Blast Systems for Steel Plate Blasting
- Cleaning Castings and Forgings
- Ship and Railcar Manufacturing/Maintenance

PHYSICAL CHARACTERISTICS

Shape: Round

Hardness: 40-51 HRC

Bulk Density: 289-298 lbs./cu. ft.

Specific Gravity: 4.8 g/cc

Free Silica: No Free Silica

Type: Manufactured

Recyclability: Very High

Surface Etching: None

PACKAGING OPTIONS

Drums: 2,000 lbs.

Bags: 50 lbs.

RECOMMENDED BLASTING CONDITIONS

Nozzle Pressure: 100-125 psi

Distance from Surface: 18 inches

SHIPPING POINTS:

Bristol, PA | Davenport, IA | Gonzales, Harvey, LA | Pasadena, TX
Theodore, AL | **Canton, MI**

COAL SLAG



DESCRIPTION:

Coal Slag is one of the most versatile abrasives available and is generally used for the removal of thick coatings, rust, and mill scale. It's widely used due to its profiling ability, economic price point, and availability.

MOST COMMONLY USED IN/FOR:

- Storage tanks, water towers, bridges, structural and plate steel
- Ships, ship yards, storage tanks, water towers
- Offshore platforms, oil fields
- Applications where minimal sparking, non-ferrous abrasives are required

PHYSICAL CHARACTERISTICS

Shape: Angular

Hardness: 6.0-7.0 Mohs

Bulk Density: 80-90 lbs./cu.ft.

Specific Gravity: 2.0-3.0 g/cc

Free Silica: Less Than 1%

Type: By-Product

Recyclability: None

Surface Etching: High

PACKAGING OPTIONS

Bulk Trucks: Available

Bulk Bags: 3,000 | 4,000 lbs.

PACKAGING OPTIONS

Bags: 50 | 80 | 100 lbs

RECOMMENDED BLASTING CONDITIONS

Nozzle Pressure: 90-125 psi

Distance from Surface: 18-36 inches

SHIPPING POINTS:

Beaumont, Corpus Christi, Deer Park, TX | Duluth, GA | Theodore, AL
Gonzales, Houma, Lafayette, LA | Davenport, IA | Coffeen, IL
Pawnee, IL | Drakesboro, KY | Fairless Hills, PA | Gary, IN
LaCygne, KS | Moundsville, WV | Roberts, WI | Satsuma, AL
Tampa, FL | Virginia Beach, VA | Fridley, MN | Hobbs, NM
Kansas City, KS | New Orleans, LA | Odessa, TX | Van Buren, AR
Glen Ullin, ND

COPPER SLAG



DESCRIPTION:

Copper Slag is an aggressive abrasive frequently used in new steel and steel maintenance applications. Its bulk density and angular shape give it an aggressiveness that provides clean, fast-cutting action, considerably increasing production rates.

MOST COMMONLY USED IN/FOR:

- Manufacturing/Maintenance of storage tanks
- Water towers, ship yards
- Structural and plate steel
- Oil fields and offshore platforms

PHYSICAL CHARACTERISTICS

Shape: Angular

Hardness: 6-7 Mohs

Bulk Density: 100-120 lbs./cu.ft.

Specific Gravity: 3.4-3.8 g/cc

Free Silica: Less Than 1%

Type: By-Product

Recyclability: None

Surface Etching: High

PACKAGING OPTIONS

Bulk Trucks: Available

Bulk Bags: 3,000 | 4,000 lbs.

Bags: 50 | 100 lbs.

RECOMMENDED BLASTING CONDITIONS

Nozzle Pressure: 90-110 psi

Distance from Surface: 18-36 inches

SHIPPING POINTS:

Corpus Christi, Deer Park, TX | Duluth, GA | Harvey, LA
Cottonwood, AZ | Fairless Hills, PA | Galveston, Houston, TX
Harvey, LA | Tampa, FL

CORN COB



DESCRIPTION:

Corn Cob cleans and polishes without damaging the surface. It is used as an alternative to other organic abrasives containing oils that may stain the substrate or affect coating adhesion.

MOST COMMONLY USED IN/FOR:

- Refinishing log homes and cedar siding
- Cleaning food-grade stainless steel
- Minimal sparking, non-ferrous abrasive settings

PHYSICAL CHARACTERISTICS

Shape: Angular to Subangular

Hardness: 4.5 Mohs

Bulk Density: 22-33 lbs./cu.ft.

Specific Gravity: 1.2-1.4 g/cc

Free Silica: No Free Silica

Type: Organic

Recyclability: Low

Surface Etching: None

PACKAGING OPTIONS

Bags: 40 | 50 lbs.

RECOMMENDED BLASTING CONDITIONS

Nozzle Pressure: 60-90 psi

Distance from Surface: 6-36 inches

SHIPPING POINTS:

Davenport, IA | Delphi, IN

CRUSHED GLASS



DESCRIPTION:

Crushed Glass is a 100% recycled abrasive product that can be used in a wide variety of applications. It cuts through mill scale and rust, providing a uniform mil profile while providing lower particle embedment than most other abrasives. This low-dusting abrasive enhances the natural luster of the surface without discoloration.

MOST COMMONLY USED IN/FOR:

- Architectural precast & concrete applications
- Brick & limestone restoration work
- Bridge construction, steel fabrication
- Wet abrasive blasting
- Shipyards

PHYSICAL CHARACTERISTICS

Shape: Angular to Subangular

Hardness: 6.0 Mohs

Bulk Density: 80 lbs./cu.ft.

Specific Gravity: 2.2 g/cc

Free Silica: Less than 1%

Type: Recycled

Recyclability: None

Surface Etching: Medium/High

PACKAGING OPTIONS

Bulk Trucks: Available

PACKAGING OPTIONS

Bulk Bags: 2,500 | 3,000 lbs.

Bags: 50 lbs.

RECOMMENDED BLASTING CONDITIONS

Nozzle Pressure: 90-100 psi

Distance from Surface: 12-36 inches

SHIPPING POINTS:

Beaumont, Corpus Christi, Pasadena, TX | Duluth, GA | Theodore, AL
Gonzales, Harvey, Houma, Lafayette, LA | Davenport, IA | Gary, IN
Baltimore, MD | Buffalo, NY | Connellsville, PA | Drakesboro, KY
Griffith, Hartford City, Indianapolis, IN | Houston, TX | Norfolk, VA
Orwigsburg, PA | Tampa, FL

HARD ROCK GARNET



DESCRIPTION:

The high bulk density and Mohs hardness of Hard Rock Garnet is ideal for quickly cutting through thick coatings and producing deeper surface profiles. Being a mined mineral, Hard Rock Garnet naturally has low chloride levels, reducing the risk of surface contamination. Hard Rock Garnet is non-metallic and will not leave a residue to interfere with coatings, and is virtually free of embedment.

MOST COMMONLY USED IN/FOR:

- Manufacturing/Maintenance
- Bridges, pipelines, oil refineries
- Shipyards, storage tanks, water towers
- Blast rooms/blast yards

PHYSICAL CHARACTERISTICS

Shape: Angular

Hardness: 7.0–8.0 Mohs

Bulk Density: 130–150 lbs./cu.ft.

Specific Gravity: 4.0–4.1 g/cc

Free Silica: Less than 0.5%

Total Chlorides: Less Than 0.5 ppm

Type: Mined Mineral

Recyclability: Medium

Surface Etching: Medium

PACKAGING OPTIONS

Bulk Bags: 3,000 lbs.

Bags: 50 lbs.

RECOMMENDED BLASTING CONDITIONS

Nozzle Pressure: 90-110 psi

Distance from Surface: 18-36 inches

SHIPPING POINTS:

Houma, LA | Pasadena, TX | Duluth, GA | Indian Lake, NY

ALLUVIAL RIVER GARNET



DESCRIPTION:

Alluvial Garnet has a sub-angular shape, hardness, and high bulk density, making it ideal for quickly removing thin to medium thickness coatings, mill scale, and rust. This lower-dusting abrasive naturally has low chloride levels, reducing surface contamination.

MOST COMMONLY USED IN/FOR:

- Blast Rooms/Yards
- Bridges, pipelines
- Oil refineries, rail yards
- Offshore Platforms, railcars, ships, storage tanks, and water towers

PHYSICAL CHARACTERISTICS

Shape: Subangular

Hardness: 7.0–8.0 Mohs

Bulk Density: 130–150 lbs./cu.ft.

Specific Gravity: 3.9–4.0 g/cc

Free Silica: Less than 1%

Total Chlorides: Less Than 7 ppm

Type: Mined Mineral

Recyclability: Medium

Surface Etching: Low

PACKAGING OPTIONS

Bulk Trucks: Available

Bulk Bags: 2,200 | 4,400 lbs.

Bags: 55 lbs.

RECOMMENDED BLASTING CONDITIONS

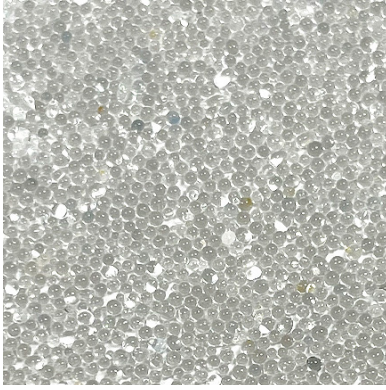
Nozzle Pressure: 90-100 psi

Distance from Surface: 18-24 inches

SHIPPING POINTS:

Harvey, Houma, Lafayette, LA | Duluth, GA | Theodore, AL
Davenport, IA | Pasadena, TX | Reserve, LA | Chesapeake, VA

GLASS BEAD



DESCRIPTION:

Glass Bead gently cleans metal parts without etching the surface, leaving a smooth, polished, or matte finish.

MOST COMMONLY USED IN/FOR:

- Automotive Restoration
- Polishing of Castings
- Stainless Steel Fabrication

PHYSICAL CHARACTERISTICS

Shape: Spherical

Hardness: 5.0-6.0 Mohs

Bulk Density: 80-90 lbs./cu.ft.

Specific Gravity: 2.5 g/cc

Free Silica: No Free Silica

Type: Manufactured

Recyclability: None

Surface Etching: None

PACKAGING OPTIONS

Bags: 50 lbs.

RECOMMENDED BLASTING CONDITIONS

Nozzle Pressure: 40-60 psi

Distance from Surface: 6-36 inches

SHIPPING POINTS:

Beaumont, Deer Park, TX | Duluth, GA | Theodore, AL
Gonzales, Harvey, Houma, Lafayette, LA | Davenport, IA
Attica, NY | Mexia, TX

PLASTIC MEDIA



Type II shown

DESCRIPTION:

Plastic Media is widely used as an alternative to chemical or hand-stripping. It gently removes coatings without damaging the substrate.

MOST COMMONLY USED IN/FOR:

Type II plastic media removes powder coatings, cleans molds, and is used in automotive restoration.

Type III plastic media is the most aggressive of the three types. It is great for cleaning and stripping primers and paints and can be used for cleaning steel, iron, and engines.

Type V plastic media has a high stripping rate ideal for aircraft components, powder coating removal, thin fiberglass components, and thin gauge metals.

PHYSICAL CHARACTERISTICS

Shape: Subangular

Hardness: Type II: 54-62 Barcol
Type III: 64-72 Barcol
Type V: 46-54 Barcol

Bulk Density: 42-45 lbs./cu.ft.

Specific Gravity: 1.2-1.5 g/cc

Free Silica: No Free Silica

Type: Recycled

Recyclability: High

PHYSICAL CHARACTERISTICS

Surface Etching: None

PACKAGING OPTIONS

Drums: 250 lbs.

RECOMMENDED BLASTING CONDITIONS

Nozzle Pressure: 60-90 psi

Distance from Surface: 6-36 inches

SHIPPING POINTS:

Call for shipping points

STAINLESS STEEL GRIT



DESCRIPTION:

Stainless Steel Grit is used to remove thick coatings, heavy rust, and mill scale. It cleans by aggressively cutting away at the surface leaving a uniform surface profile.

MOST COMMONLY USED IN/FOR:

- Cleaning Castings/Forgings

PHYSICAL CHARACTERISTICS

Shape: Angular

Hardness: 56-62 HRC

Bulk Density: 225 lbs./cu.ft.

Specific Gravity: 4.8 g/cc

Free Silica: No Free Silica

Type: Manufactured

Recyclability: Very High

Surface Etching: High

PACKAGING OPTIONS

Bags: 55 lbs.

RECOMMENDED BLASTING CONDITIONS

Nozzle Pressure: 100-125 psi

Distance from Surface: 18 inches

SHIPPING POINTS:

Brantford, ON, Canada

STAINLESS STEEL SHOT



DESCRIPTION:

Stainless steel shot is excellent for achieving a smooth, shiny, satin-like finish and can leave a surface free of contamination that causes rust.

MOST COMMONLY USED IN/FOR:

- Cleaning Aluminum and other Non-Ferrous Castings/Forgings

PHYSICAL CHARACTERISTICS

Shape: Round

Hardness: 30-45 HRC

Bulk Density: 225 lbs./cu.ft.

Specific Gravity: 4.8 g/cc

Free Silica: No Free Silica

Type: Manufactured

Recyclability: Very High

Surface Etching: None

PACKAGING OPTIONS

Bags: 55 lbs.

RECOMMENDED BLASTING CONDITIONS

Nozzle Pressure: up to 110psi

SHIPPING POINTS:

Brantford, ON, Canada

STARBLAST™ STAUROLITE



DESCRIPTION:

Staurolite is a general-purpose abrasive used to remove thin coatings, rust, and mill scale. It is ideal for applications where a minimal surface profile is required.

MOST COMMONLY USED IN/FOR:

- Manufacturing & maintenance of bridges, blast rooms
- Pipelines, oil refineries
- Rail yards, ship yards
- Storage tanks, water towers, blast yards

PHYSICAL CHARACTERISTICS

Shape: Subangular

Hardness: 7.0 Mohs

Bulk Density: 136 lbs./cu.ft.

Specific Gravity: 3.6-3.85 g/cc

Free Silica: Less than 1% to 3%

Type: Mined Mineral

Recyclability: Medium

Surface Etching: Varies

PACKAGING OPTIONS

Bulk Trucks: Available

Bulk Bags: 4,000 lbs.

Bags: 50 lbs.

RECOMMENDED BLASTING CONDITIONS

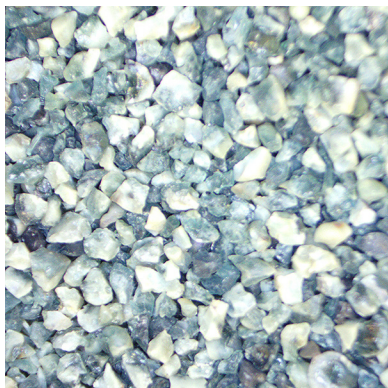
Nozzle Pressure: 100-110 psi

Distance from Surface: 18-36 inches

SHIPPING POINTS:

Beaumont, Pasadena, TX | Davenport, IA | Theodore, AL
Gonzales, LA | Duluth, GA | **Starke, FL**

SURECUT EDGE™



DESCRIPTION:

SureCut Edge™ is an enhanced nickel abrasive material, providing a cleaner substrate surface. It has a lower dust and consumption rate, lowering your overall costs. The low heavy metal and crystalline silica content makes this an environmentally safe product.

MOST COMMONLY USED IN/FOR:

- Shipbuilding & marine
- Pipeline construction & maintenance
- Bridges
- Offshore, chemical plants
- Chemical plants

PHYSICAL CHARACTERISTICS

Shape: Angular/Sub-Angular

Hardness: 7 Mohs

Bulk Density: 90-100 lbs./cu.ft.

Free Silica: Less than 0.1%

Recyclability: Low

Surface Etching: (Medium) 4.5 - 5.5 mil
(Fine) 3.5 - 4.5 mil
(Extra Fine) 2.0 - 3.25 mil

Total Chlorides: Trace if present

Type: Manufactured

PACKAGING OPTIONS

Bulk Trucks: Available

Bulk Bags: 3,000 lbs.

Bags: 50 lbs.

RECOMMENDED BLASTING CONDITIONS

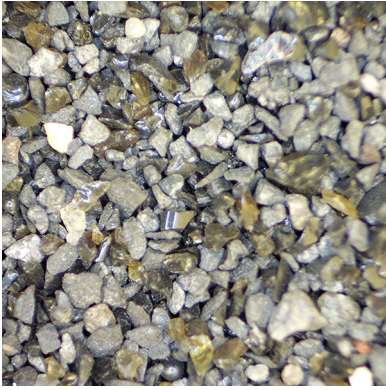
Nozzle Pressure: 100-125 psi

Distance from Surface: 18-36 inches

SHIPPING POINTS:

Corpus Christi, TX | Pasadena, TX | **Houston, TX**

SURECUT VELOCITY™



DESCRIPTION:

SureCut Velocity™ is an enhanced calcium-iron silicate abrasive material that provides a fast and aggressive cutting solution that is substrate and environmentally friendly. The aggressive cutting profile provides the fastest cleaning rate on the market. The finished product offers a consistent substrate surface profile.

MOST COMMONLY USED IN/FOR:

- New steel
- Heavy rust & medium thickness coatings
- Shipbuilding
- Pipelines
- Utilities

PHYSICAL CHARACTERISTICS

Shape: Angular/Sub-Angular

Hardness: 7-8 Mohs

Bulk Density: 105-120 lbs./cu.ft.

Free Silica: Less than 0.1%

Recyclability: Low

Surface Etching: (Fine) 3.0 - 4.25 mil
(Extra Fine) 2.0 - 3.25 mil

Total Chlorides: Trace if present

Type: Manufactured

PACKAGING OPTIONS

Bulk Trucks: Available

Bulk Bags: 3,000 lbs.

Bags: 50 lbs.

RECOMMENDED BLASTING CONDITIONS

Nozzle Pressure: 100-125 psi

Distance from Surface: 18-36 inches

SHIPPING POINTS:

Pasadena, TX | Gallipolis, OH | Houston, TX | Gary, IN

WALNUT SHELL



DESCRIPTION:

Black Walnut Shell is thick and hard and can be used for a variety of blast cleaning and polishing applications.

English Walnut Shell is thinner and softer and considerably more lightweight and is ideal for polishing a surface without leaving much of a surface profile.

Both types of walnut shell can be used for blast cleaning and polishing soft metals, fiberglass, plastics, wood, and stone. Easily deburr and deflash products for moldings, castings, and electrical parts.

MOST COMMONLY USED IN/FOR:

- Fire/Smoke Remediation
- Graffiti Removal
- Brick Restoration
- Automotive Restoration
- Petrochemical/Offshore Applications

PHYSICAL CHARACTERISTICS

Shape: Angular

Hardness: 3.0 Mohs

Bulk Density: 40-45 lbs./cu.ft.

Specific Gravity: 1.2-1.4 g/cc

Free Silica: No Free Silica

Type: Organic

Recyclability: Low

Surface Etching: Low

PACKAGING OPTIONS

Bags: 50 lbs.

RECOMMENDED BLASTING CONDITIONS

Nozzle Pressure: 60 psi

Distance from Surface: 6-36 inches

SHIPPING POINTS:

Beaumont, Pasadena, TX | Davenport, IA | Theodore, AL |
Gonzales, Harvey, Houma, LA | Corning, CA | Stockton, MO

Bulk Abrasive Blasting Pots



60 Cubic Feet



120 Cubic Feet



160 Cubic Feet

Bulk Abrasive Storage & Loading Products



725 cu.ft. Storage Hopper



Bulk Bag Rack & Platform



Bulk Bag Rack & Stand

Dust Collectors, Vacuums, & Wet Blast Pots



50K | 28K | 18K | 8K | 6K



23T | 15T | 8T



6.5 | 3.5

SPENT ABRASIVES HAUL-AWAY PROGRAM

Allredi now offers a spent abrasives haul-away program through a partnership with KanAgg!



Cost Effective

The KanAgg spent abrasives haul-away program provides our customers cost savings versus traditional methods, such as landfilling. Because KanAgg's sole focus is spent abrasive, the program is much more cost effective than traditional waste consulting services.



Green Solution

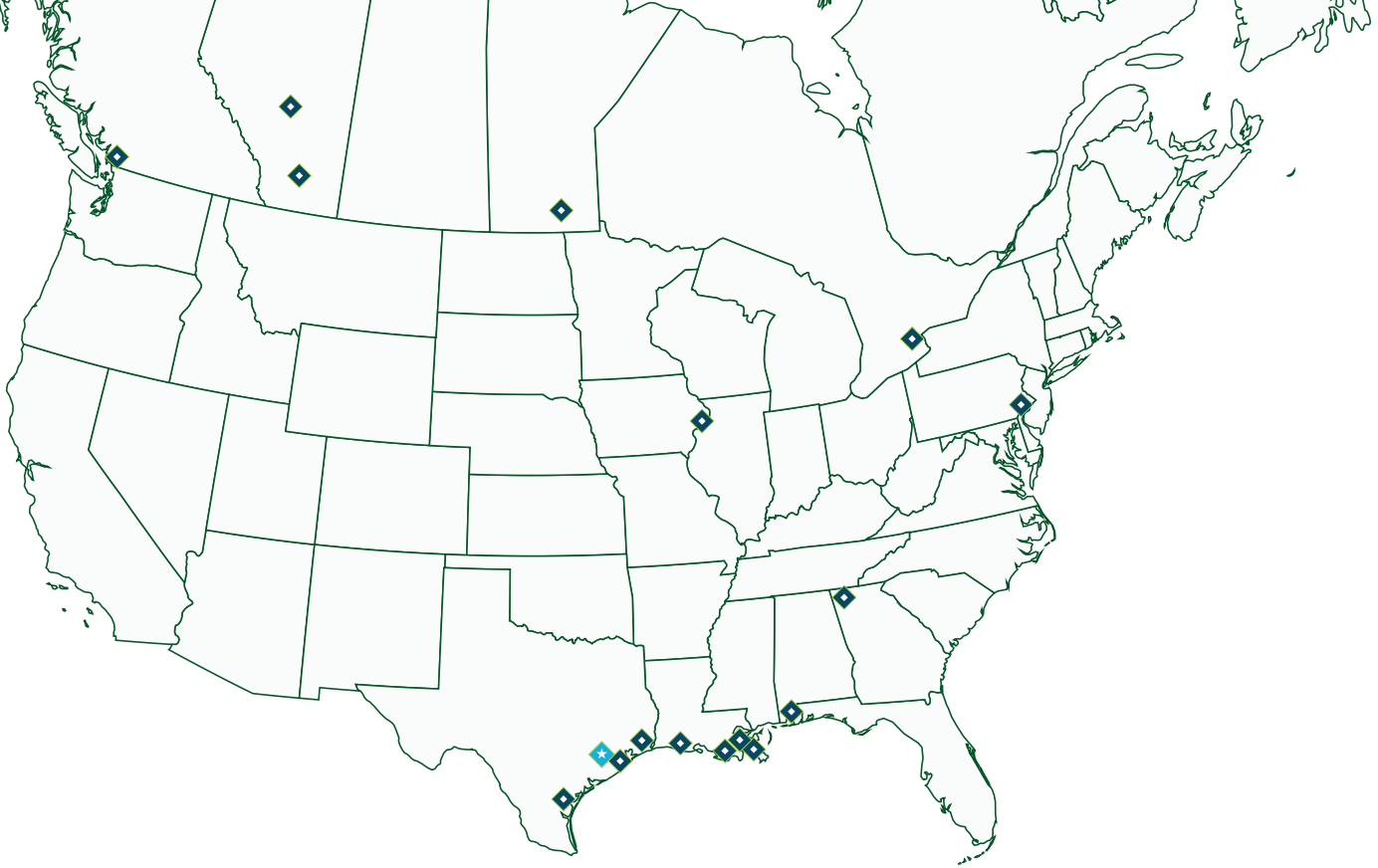
KanAgg focuses on environmental-health and social-responsibility. 100% of the material collected is recycled!



Accepted Spent Abrasives

- Garnet
- Coal Slag
- Nickel Slag
- Copper Slag
- Crushed Glass
- Starblast
- Silica Sand
- And more!

Contact:
sales@allredi-us.com



ALLREDI THERE

Serving these industries: Bridge, Pipeline, Tank & Tower, Concrete Services, Rail, Shipyard & Marine, Pools & Fountains and Foundry

UNITED STATES

Pasadena, TX (*Headquarters*)
844.361.7038

Beaumont, TX
409.722.1284

Bristol, PA
215.826.8080

Corpus Christi, TX
361.887.2038

Davenport, IA
563.324.2519

Deer Park, TX
(*Service & Rental Location*)
281.930.0905

Duluth, GA
800.535.4564

Gonzales, LA
225.647.7575

Harvey, LA
504.367.8090

Houma, LA
985.580.4273

Lafayette, LA
337.267.1440

Theodore, AL
251.338.7525

CANADA

Calgary, Alberta
403.279.1924

Coquitlam, BC
604.464.6979

Edmonton, Alberta
780.468.2588 (Manus)
780.425.5510 (Mod-U-Blast)

Hamilton, Ontario
905.527.6000 / 888.794.5665

Mississauga, Ontario
905.890.5837

Winnipeg, Manitoba
204.256.3324

800.BLAST.IT / WWW.ALLREDI-US.COM

Allredi™ and Marco® are registered trademarks of Allredi, LLC.
All other brand names or marks are used for identification purposes and are trademarks of their respective owners.

ALLREDI™
Abrasive Product Line Brochure_7/27/2023