



# Black Magic® Coal Slag

Quick cleaning Superior performance



**40-60**  
Extra  
Fine

**1-2 mil**  
**1/8" Nozzle (min)**

Surface cleaning

Removal of:  
Light rust

Light coatings

Profile: Smooth

Industry Uses:  
Automotive  
Steel

Blast Result:  
Brush off



**30-60**  
Fine

**1.5-2 mil**  
**1/8" Nozzle (min)**

Light Cleaning

Removal of:  
Mill scale

Light coatings & rust

Profile: Slight

Industry Uses:  
Automotive  
Steel

Blast Result:  
White Metal



**20-40**  
Medium  
Fine

**2-3 mil**  
**3/16" Nozzle (min)**

General Cleaning

Removal of:  
Mill scale

Rust • Coatings

Profile: Moderate

Industry Uses:  
New construction  
Bridges • Tanks  
Pipelines

Blast Result:  
Near White to White Metal



**16-40**  
Medium

**3-4 mil**  
**1/4" Nozzle (min)**

General Cleaning

Removal of:  
Medium to heavy coatings  
Heavy mill scale & rust

Profile: Moderate - deep

Industry Uses:  
Structural Steel  
Bridges • Ships  
Bridges

Blast Result:  
Near White Metal



**8-20**  
Coarse

**4+ mil**  
**5/16" Nozzle (min)**

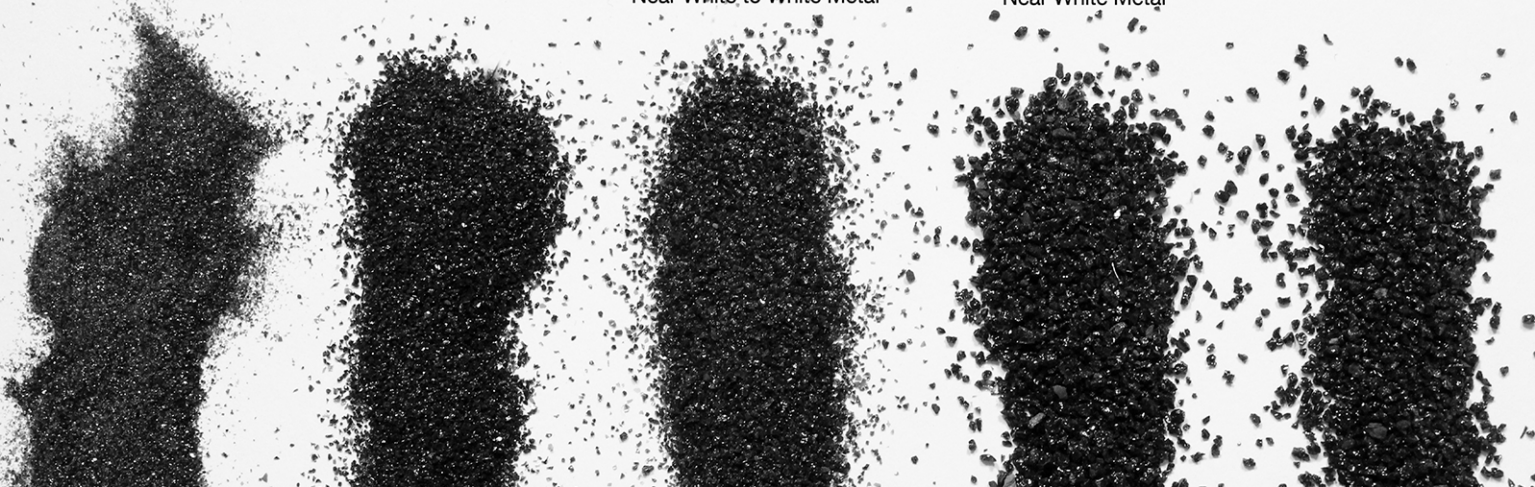
Heavy Cleaning

Removal of:  
Heavy coatings & rust  
Epoxy • Linings

Profile: Deep

Industry Uses:  
Concrete • Ships  
Water towers

Blast Result:  
Commercial



Manufactured & Distributed by:  
[www.AbrasivesInc.com](http://www.AbrasivesInc.com)

Contact Our Team:  
[Sales@AbrasiveInc.com](mailto:Sales@AbrasiveInc.com)

**GLEN ULLIN, ND • FRIDLEY, MN • HOBBS, NM • ODESSA, TX**



# Black Magic® Coal Slag

Quick cleaning Superior performance

Black Magic® coal slag is a recycled by-product of lignite coal-fired power plants. Our slag is created from a hotter source which creates a harder material and conforms to environmental standards. The extensive screening process we use to size our slag results in more consistently sized particles that are less likely to clog equipment.

Hard angular particles Consistent weight & size No heavy metals Fast cleaning  
 Excellent profile for coating adhesion Chemically inert Hardness - 6.5-7.5 Mohs <.2% free silica

**AMPP AB1 Certified, CARB & U.S. Navy QPL Approved**

*Black Magic® users say it cleans faster, better and has less dust than other slag products.*

## Blast Media Additives

### Dustnet® Liquid Dust Suppressant

Reduces up to 97% of nuisance dust and as much as 76% respirable dust during blasting. Proven effective with numerous abrasives.

#### Benefits:

Non-hazardous  
 No special disposal requirements  
 Settles dust closer to blast site  
 Doesn't affect coating cohesion

### Blastox®

Stabilizes lead in various industrial paints and spent abrasive waste. Offers One Step Lead Abatement technology.

#### Benefits:

Waste classified as non-hazardous  
 Disposal in Class D landfill  
 Pre-blended with most media  
 Eliminates additional labor costs



## Packaging

Jumbo Cells  
 (approx 3,800 lbs)  
 25, 50 & 80 lb bags

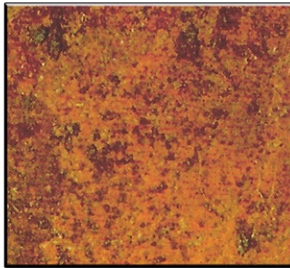
## Delivery

Railcar • Pneumatic • Flatbed  
 End Dump • Hopper Bottom • LTL

Orders ship within 24 hours  
 Delivery in 48 hours  
 in most circumstances

## Blast Cleaned Surface Examples

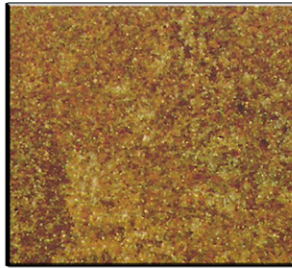
*Images are viewed without magnification*



### Uncleaned

Mill scale has flaked off and complete rusting has occurred

*For the complete guide to surface cleanliness & standards, visit [www.SSPC.org](http://www.SSPC.org)*

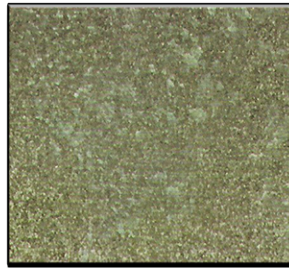


### Brush-Off

SSPC-SP 7 • NACE No. 4

Free of all visible oil, grease, dirt, dust, loose mill scale, loose rust, and loose coating.

Tightly adherent mill scale, rust, and coating may remain on the surface (can't be removed by lifting with a dull putty knife after abrasive blast cleaning).



### Commercial

SSPC-SP 6 • NACE No. 3

Free of all visible oil, grease, dirt, dust, mill scale, rust, coating, oxides, and corrosion products.

No more than 33% of random staining (light shadows, streaks, discoloration) caused by rust, mill scale or coating.



### Near-White

SSPC-SP 10 • NACE No. 2

Free of all visible oil, grease, dirt, dust, mill scale, rust, coating, oxides, and corrosion products.

No more than 5% of random staining (light shadows, streaks, discoloration) caused by rust, mill scale or coating.



### White

SSPC-SP 5 • NACE No. 1

Free of all visible oil, grease, dirt, dust, mill scale, rust, coating, oxides, and corrosion products



### MINNESOTA

205 Osborne Rd  
 Fridley, MN 55432  
 800-716-9651

### NEW MEXICO

209 E. Marland St  
 Hobbs, NM 88240  
 575-393-3443

### NORTH DAKOTA

4090 Hwy 49  
 Glen Ullin, ND 58631  
 800-584-7524

### TEXAS

3813 N. County Rd. W  
 Odessa, TX 79764  
 432-366-0275