

MOD-U-BLAST®

P-SERIES PRESSURE BLAST CABINETS



- **P-Series** blast cabinets are designed for use with: glass beads, glass grit, aluminum oxide, silicon carbide, mineral slags, or other blast media with a bulk density greater than 80 lb/ft and less than 130 lb/ft. PMB-Series and PSS-Series machines will accommodate lighter and heavier media's than mentioned above. Media type and size should be specified.

PRESSURE SERIES BLAST CABINETS



HIGH PRODUCTION

The Mod-U-Blast® "P Series" Pressure Dry Blast Cabinets are engineered for maximum production (3 to 4 times faster than standard suction blasting - "S Series"). Mod-U-Blast® Pressure Cabinets are equipped with a Pneumatic Valve for optimum safety and blast media flow, direction and velocity (foot pedal operated). Pressure systems give the control needed to clean at gentle pressures (10 to 20 PSI) or aggressive cleaning as high as 110 PSI. Minimum pressure with Suction Systems is 30 to 40 PSI.

QUALITY

- All Mod-U-Blast® P-Series cabinets are constructed with heavy duty 14 gauge steel, external lighting system, safety glass viewing window, and overlapping positive tension doors.
- With Mod-U-Blast's exclusive modular design it becomes easy to choose the system that best suits your budget and your specific blast cleaning application. Ten (10) standard sizes available (Custom sizes available upon request). We can recommend a Mod-U-Blast® system to manage virtually any blast cleaning application.
- All systems can be easily upgraded at any date with Mod-U-Blast's adaptable production upgrade kits.
- Perforated steel floors come standard - no expanded metal.

EFFICIENCY

MEDIA RECLAIMER:

- Precision engineered and designed, the Mod-U-Blast® media cyclone reclaimer delivers separation of blast media, oversized foreign matter, and dust. Equipped with replaceable wear plate for reduced long term maintenance costs.
- Also available as an upgrade kit for cabinets without reclaimers (Reclaimers 900 CFM & greater are mounted on a stand)

METERING / REMOTE SYSTEM:

- Mod-U-Blast® pressure cabinets come standard with a M-Valve metering valve for defined efficiency. This valve allows for the fine-tuning of the flow of media to the mixing point where the abrasive meets the air flow. All pressure cabinets come equipped with a auto-air valve/blow down system that is controlled by foot controlled pedal. Once foot pedal is activated, the auto-air valve opens and the blow down valve closes pressurizing the blast vessel to the pre-regulated blast pressure that will start the blast cycle. Once foot pedal is released, the process reverses and the blast vessel blows down into the rubber lined hopper of the blast cabinet.

600 CFM reclaimer pull through style illustrated. For use with Reverse Pulse Dust Collectors



900 CFM reclaimer w/ 1 Cu. Ft blast pot illustrated. For use with reverse pulse dust collectors*



Increase production by upgrading from standard 0.7 Cu. Ft pressure vessel to 3.5 Cu. Ft pressure vessel. *For 900 CFM reclaimers or bigger*



Electrical Requirements

CFM	HORSE POWER	PHASE / AMPS REQUIRED
300	1/2 H.P.	1-Phase / 7 Amps
600	1 H.P.	1-Phase / 14 Amps
900	2 H.P.	1-Phase / 20 Amps
1200	5 H.P.	3-Phase / customer Specified

Air Requirements

NOZZLE	BORE SIZE	CFM@80PSI
2	1/8"	18
3 (standard)	3/16"	39
4	1/4"	69
5	5/16"	115
6	3/8"	160

STANDARD FEATURES

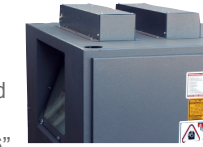
CONSTRUCTION

- 14 gauge one piece steel construction
- Powder Coated white interior cabinet and hammertone grey exterior for durability. Mod-U-Blast® uses overlapping positive tension doors with adjustable hand latch system.



LIGHTING SYSTEM

- Mod-U-Blast's external LED lighting system features 2 - 24" tubes in cabinets that are less than 36" in depth, and a dual-fixture system with 4-24" tubes in cabinets 36" or larger in depth.



METERING / REMOTE SYSTEM

- 0.7 Cu. Ft or 1 Cu. Ft. pressure pot • Micro Valve • Auto Air Valve • Dump Valve • Safety Relief Valve



AIR BLOW OFF GUN



BLAST NOZZLE 3/16"

NATURAL RUBBER GLOVES



- High puncture and snag resistance. Natural rubber glove with a sewn nitrile.

PNEUMATIC FOOT PEDAL



SAFETY GLASS WINDOW



- Quick change safety glass window with replaceable protector and trim-Lok window seal.

MOISTURE SEPARATOR, REGULATOR & GAUGE CONTROL PANEL



ADDITIONAL FEATURES:

- Perforated steel flooring
- Powder coated for durability
- Replaceable reclaim wear plate
- Adjustable air intakes for clear visibility
- Safety door shut-offs
- High pure gum content abrasive blast hose
- Strategically rubber lined hopper
- Cabinets are 100% modular and fully upgradable

DUST COLLECTION

MULTI-BAG DRY FILTER CABINETS

- Mod-U-Blast® multi-bag dust filter cabinets incorporate either 15, 25, 40 or 50 (300, 600, 900 and 1200 CFM) cotton sock type filter bags which are tightly mounted into steel housings (top and bottom). Clean air is returned to the outside of the louvered panel door and dust and dirt are contained in bottom.
- Manual Shaker is used to clean dust socks at intervals. Air volume damper control is also standard on all Mod-U-Blast® filter cabinets. Also available as upgrade kit for machines with dust bag only. Recommended for more frequent use, high production.

- Dust is collected either in a drawer or a hopper with clean-out hatch. The hopper style is recommended and standard configuration unless there is a height restriction. If you require low-profile, the drawer style is available.



REVERSE PULSE CARTRIDGE DUST COLLECTION

- Mod-U-Blast® reverse pulse cartridge dual collectors are available from 300 CFM to 12000 CFM. They provide optimum clean air environments for blast cabinets, booths and blast rooms. Reverse pulse collectors feature efficiency 280 pleated filter cartridges.

- Models M300-2C, M600-2C, M900-2C, M1,200-C, M3000-6C, M6000-12C, M9000-18C, M12000-24C come standard with push button cleaning system or optional auto-timed controls. Reverse pulse collectors larger than 1200 CFM(2C) come standard with auto-timed control. Hopper Discharge is standard with all reverse pulse collectors.

- Low profile models also available.



OPTIONS

TURNTABLES & TRACK SYSTEMS

Available with inside and/or outside track assembly or as set-in turntable only. Standard turntables hold up to 700 lbs, custom turntables hold up to 2000 lbs. Mod-U-Blast® turntable systems will increase worker convenience, comfort and productivity while decreasing glove wear, hand injuries and overall operator fatigue. Ideal for blast cleaning larger, heavier components. May be furnished for one (1) or both (2) sides of the blast cabinet.

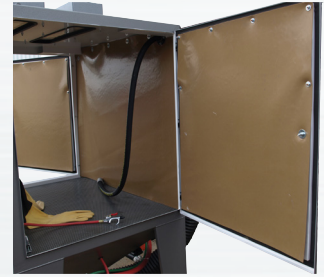
*Custom sizing available.



WEAR KITS

Wear kits are available for all machine sizes. This option is recommended when harsh blast media is being used, eg: aluminum oxide. A cabinet wear kit will extend the life of any machine regardless of the media being used.

Each wear kit includes: 1/16" Natural gum draping on sides and back of cabinet, H.D. rubber lined return hose, and tungsten carbide blast nozzle. * Urea spray lining available



PASS THROUGH KITS



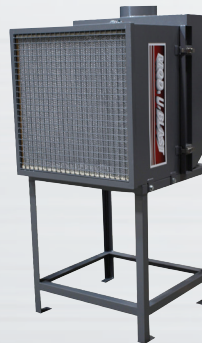
Custom pass through kits available for new or existing cabinets.

PIPE ROLLING CARTS



Save time and discomfort blasting pipe with Mod-U-Blast® pipe rolling carts.

HEPA RETURN FILTER



Available with all reverse pulse Cartridge dust collector models. 99.99% particulate removal efficiency

H.D. DESICCANT INLINE AIR DRYERS



These single tower desiccant air dryers contain two highly efficient polypropylene coalescer elements at inlet & outlet ports to absorb oil and solid air particles. Also included, one large desiccant bag specifically designed to absorb moisture and condensation from your compressed air system.

CUSTOM PRESSURE CABINETS ALSO AVAILABLE BY MOD-U-BLAST®



Custom (72"W x 72"H x 48"H) pressure cabinet with dual vertical doors & automated turntables



Custom (60"W x 60"D x 44"H) pressure cabinet with H.D. turntable built into side door

Custom blast cabinets are engineered and manufactured to meet your blasting requirements

STANDARD WORKING CHAMBER DIMENSIONS (W" X D" X H")



- 30"W x 26"D x 40"H
- 36"W x 26"D x 40"H
- 36"W x 36"D x 40"H
- 48"W x 36"D x 40"H
- 48"W x 48"D x 40"H
- 60"W x 36"D x 40"H
- 60"W x 48"D x 40"H
- 60"W x 60"D x 40"H
- 72"W x 72"D x 48"H
- 72"W x 36"D x 48"H (DUAL STATION)
- 96"W x 48"D x 48"H (DUAL STATION)

CUSTOM SIZES AVAILABLE

Distributed By:

MOD-U-BLAST
403 - 69 Avenue
Edmonton, Alberta
T6P - 0C2

Ph: (780) 466-5085
Fax: (780) 465-7317
Service: (780) 425-5510