

# MOD-U-BLAST®



## BULK BLAST MACHINES



**Mega-Blast®** Bulk Abrasive Blasters are available in two standard sizes, either 100 Cu. Ft. (2800 Litre) or 160 Cu. Ft. (4500 Litre) capacity. Custom engineered machines are also available. High-volume and high-production are standard with Mega-Blast® units, all vessels are rated to 150 psi working pressure. We manufacture each vessel using 3/8" metal on the tank shells and 1/2" metal on the tank heads. All Mega-Blast® vessels are CRN-Registered, National Board Certified, U-Stamped (ASME), and A-Stamped (Alberta).

# FEATURES



## CLOSURE ASSEMBLY

- 10" Top closure assembly with 5 bolt cam-loks. (Posi-seal ready)



## 150 PSI HEAVY WALL VESSEL

- 3/8" metal shell and 1/2" metal vessel heads.

## CURVED LADDERS

- Equipped with curved ergo ladders for easy access to higher machine components.

## REMOTE CONTROL POWER BOX PKG.

- For electric systems only. Power box includes toggle switches, light indicators and emergency stop button. (Hour meters optional)

## APV METERING VALVES

- The Mod-U-Blast (Automatic Plunger) APV-II normally closed valve is durable and designed for high production. Available with urethane sleeve or tungsten carbide sleeve upgrade in 1-1/4" or 1-1/2" NPT sizes.



## FULL ACCESS MANWAY

- Double claw full access manway.



Model #MB160-HT4E illustrated  
(160 Cu. Ft. 4 outlet, electric Highway Trailer Mega-Blast® machine)

## SAFETY VALVE

- Pressure safety relief valve with secondary manual valve.



## ACCESSORY MOUNTING PORTS (4)

- Designed to house bulk bag loading platform, safety cage, swivel filling funnel, and hose racks.

## HIGH VOLUME MOISTURE SEPARATOR

- Optional 800 or 1600 CFM multi-outlet high volume separators with stainless steel coalescing de-minister element, maintenance free. CRN registered vessel. (Highly recommended)



## HIGH VOLUME AUTO AIR VALVES

- 1-1/2" auto air valves are less restrictive compared to standard auto air valves and provide a zero pressure drop air path for increased production. 2" plumbing also available.



## DUAL BLOW DOWN PKG.

- Dual manual blow down with the new H.D. 1" exhaust mufflers for improved blow down noise tone.



## STANDARD FEATURES:

Stationary Bulk Blaster, 150 PSI Rated (10.3 Bar) vessel c/w four outlet capability, full load lifting eyes, 4" bottom drain and inlet manifold, plumbed with two (2) complete operator systems with 1-1/2" Urethane T-Valves, 55 ft. pneumatic twin line or electric cable, fittings, two deadman switches, dual manual blow down, 10" closure (Posi-Seal ready), manway, man ladders, leg pads, CRN Registration, U-Stamp, A-Stamp, National Board Certification, pressure safety relief valve with back-up safety relief valve, accessory top ports (4).

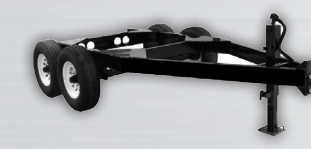


## MOUNTING OPTIONS:

- SKID MOUNTED • YARD TRAILER • HIGHWAY TRAILER • DUAL TANDEM • HIGHWAY TRAILER •



Rugged heavy steel skid complete with fork pockets.



Off-road use only, rate 14K GVW rated, dual axle torsion suspension, H.D. jack stand.



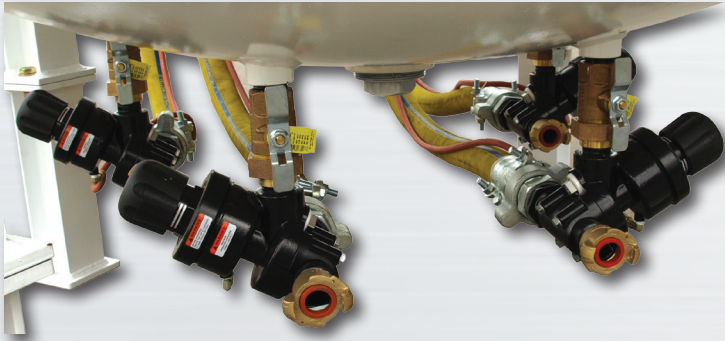
Canada and USA (DOT) approved. Includes formed H.D. fenders, L.E.D. lights, torsion suspension, electric brakes, 14K GVW rated, dual axle, chrome centre caps, chrome lug nuts, spare tire, H.D. jack stand.



Canada and USA (DOT) approved. Includes formed H.D. fenders, L.E.D. lights, torsion suspension, electric brakes, 20K GVW rated, dual axle, chrome centre caps, chrome lug nuts, spare tire, H.D. jack stand.

# MACHINE OPTIONS

- **ADDITIONAL OPERATOR OUTLETS** •
- **APV-II ABRASIVE METERING VALVES** •
- **UNION-END BALL VALVES** •



Mega-Blast® machines come standard with two (2) operator outlets (pneumatic or electric). You can equip your bulk unit with up to four (4) outlets, upgrade to state of the art APV-II metering valves that come standard with tungsten carbide sleeves and add union-end ball valves that provide easy access to the metering valves for maintenance or clearing blockages.

- **CUSTOM PAINT** •

• Looking to promote your company's brand colors? No problem! Mod-U-Blast can custom paint your Mega-Blast® machine any color you choose.

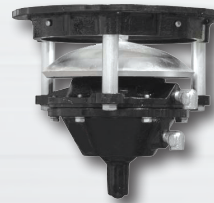


- **BULK BAG LOADING HOPPER** •



• Save time loading blast media using Mod-U-Blast's loading platform. Like all Mega-Blast® options, this loading platform can be added at time of purchase or a later date to accommodate bulk bag loading.

- **AUTO POSI-SEAL VALVE** •



• The "Double Seal" Posi-Seal valve is a 10" auto pop-up valve that allows filling without removal of 10" closure. Internally vessel mounted, ideal for indoor blastroom applications.

- **ABRASIVE FILLING FUNNEL** •



• Swivel Arm 24" Abrasive filling funnel.

- **LOCK OUT TAG OUT** •



• Prevents unauthorized or untrained personnel from accessing the bulk blaster top closure.

- **ADDITIONAL OPTIONS** •

- Abrasive cut-off system, per outlet
- Tungsten carbide sleeves, per outlet
- 2" Full flow auto air valves, per outlet
- Hour meter kits
- Hose racks

## WEIGHTS (lbs)

SIZE	NO MOUNT	SKID MOUNT	YARD TRAILER	HIGHWAY TRAILER	DUAL TANDEM TRAILER
100 Cu Ft, 4 outlet, w/ High volume separator	2350lbs	3135lbs	3750lbs	4150lbs	5150lbs
160 Cu Ft, 4 outlet, w/ High volume separator	3745lbs	4630lbs	5145lbs	5545lbs	6545lbs
*Approximate weights*					

## DISTRIBUTED BY:

## MOD-U-BLAST®

403 - 69 Avenue  
Edmonton, Alberta  
T6P - 0C2

Ph: (780) 466-5085

Fax: (780) 465-7317

Service: (780) 425-5510

Email: [info@modublast.com](mailto:info@modublast.com)